

# Welcome!



COMMUNITY FORUMS | ONTEORA CENTRAL SCHOOL DISTRICT

Find a seat and get comfortable. We will begin shortly.

**POINT** LEADERSHIP  
DEVELOPMENT  
& DESIGN  
**ROAD**  
**STUDIOS**



STUDENTS AT THE CENTER!  
LEARNING AND GROWING ON A CAMPUS  
FULL OF OUR CREATIVE IDEAS.

Shaping the future of central campus,  
together.



# Community Forums to Reflect Your Priorities and Aspirations

## **Prioritize | December 2024**

On December 3, architects and engineers will share a first draft of their preliminary conceptual designs and attendees will engage in a prioritization exercise to capture feedback. The designs incorporate the creative ideas and priorities shared during the initial visioning that took place last year during a series of community gatherings, as well as through smaller group discussions with internal stakeholders of students, staff, and administrators.

## **Revise | January 2025**

On January 15, participants will gather to review more refined designs developed from the input and priorities identified during the December 3 meeting, and provide the architects and engineers with further input. Administrators will discuss the funding pathways for these revised designs.

## **Refine | February 2025**

On February 25, a final gathering will be held to share updates to the plans and planned funding pathway with a chance for community Q & A. Your questions and input will guide the architect and engineers in finalizing their design work needed to propose a Capital Project for the May 20 vote.



# Community Forum Flow



**What's Guiding Us?**

**Nuts + Bolts of Campus Upgrades**

**Building A New Foundation, Together**

**Your Reflections**



# Say hello to your neighbors!



- What is **your** name?
- What inspired you to be here today?
- How would you like to **contribute**?



## Commitment from Central Administrators

**Our aim in these sessions is to have open and honest dialogue, hear community feedback on priorities, and be transparent about the design, funding, and process for the path to the central campus.**



## Our Wish

**To create a central campus design that reflects the priorities and aspirations of the community, that integrates the wisdom and guidance of subject matter experts, and that offers our students the best education we can – now and for the future.**



# Working in Partnership with BoE to Create a Central Campus

The Board of Education of the Onteora Central School District plans to undertake steps regarding the reconfiguration of grade levels with an **ultimate goal of locating all grade levels in buildings located on one central campus by 2028**, with an acknowledgment and understanding that working toward this goal will **require multiple steps and be guided by ongoing collaboration with the District community**, with such steps to include:

- **Visioning exercises** with students, teachers, families, and members of the community to address the hierarchy of needs and explore innovative ideas.
- **Consultation with the District's architects and fiscal advisors** regarding building conditions and capital project planning, **including determining the design and scope of work that would be necessary for a centralized campus, budget planning, and environmental review.**
- **Voter authorization to fund** such a project.
- **Review and approval of design plans by the New York State Education Department**, a competitive **bidding process** for the award of contracts, and the commencement and completion of **construction work.**

# Taking Steps to Gather Information and Input

- ❑ 4 Community Forums last Spring to discuss “wishes and worries” about move to central campus and to imagine what the campus could look like
- ❑ Dedicated visioning sessions with key stakeholders
  - ❑ Faculty and Staff
  - ❑ Middle School and High School Students
- ❑ Building Conditions Survey and space utilization analysis of existing buildings
- ❑ Early drafts of new designs being created by District’s design team of architects and engineers based on visioning, space utilization assessment and building conditions survey
- ❑ Conceptual designs reviewed by Principals, Central Administrators and Community Guide to prepare to share to public for input
- ❑ Community Forums in 2024-2025
  - ❑ Community Forum 1: First Draft Review + Prioritization Exercise | December 3, 2024, 6:00 -8:00 PM
  - ❑ Community Forum 2: Second Draft Review + Community Discussion | January 15, 2025, 6:00 -8:00 PM
  - ❑ Community Forum 3: Proposed Campus Design + Community Q & A | February 25, 2025, 6:00 -8:00 PM



# Your Input Integral Part of a Larger Whole

- ❑ MONEY: Partnering with financial advisors to understand options and pathways to fund changes and be a good steward of resources
- ❑ DESIGN: Iterating on design options with architects and engineers
- ❑ LEADERSHIP: Working with School Board (Board vote on campus design anticipated March 2025)
- ❑ COMMUNITY: Voters weigh in on plans (anticipated May 2025)

*With approval from our community, we then shift into securing necessary NYS approvals and build team who can bring the plan to life.*







# Guiding Principles

1. Student First
2. Staff Forward
3. Fiscally Responsible
4. With Community



# Any questions?





# NUTS + BOLTS OF CAMPUS UPGRADES



**There are many updates desired for campus to make it a safe, comfortable and inspiring learning environment for our students and staff. We heard from the architecture firm about what work is already underway, what the “Nuts and Bolts” priorities are (regardless if the campus centralizes) and what additional updates are desired for building a new foundation for a central campus.**

# You can see DRAFT details of Upgrades

Please see the Central Campus Design Upgrades document for a detailed DRAFT overview of potential campus upgrades, broken out into the following categories:

1. **Work In Progress** upgrades (already funded work that is recently completed or slated to be completed)
2. **Nuts & Bolts** upgrades needed regardless of centralized
3. **Building a New Foundation** upgrades to benefit all students and make central campus a safe, comfortable and inspiring place for all students to learn and grow.



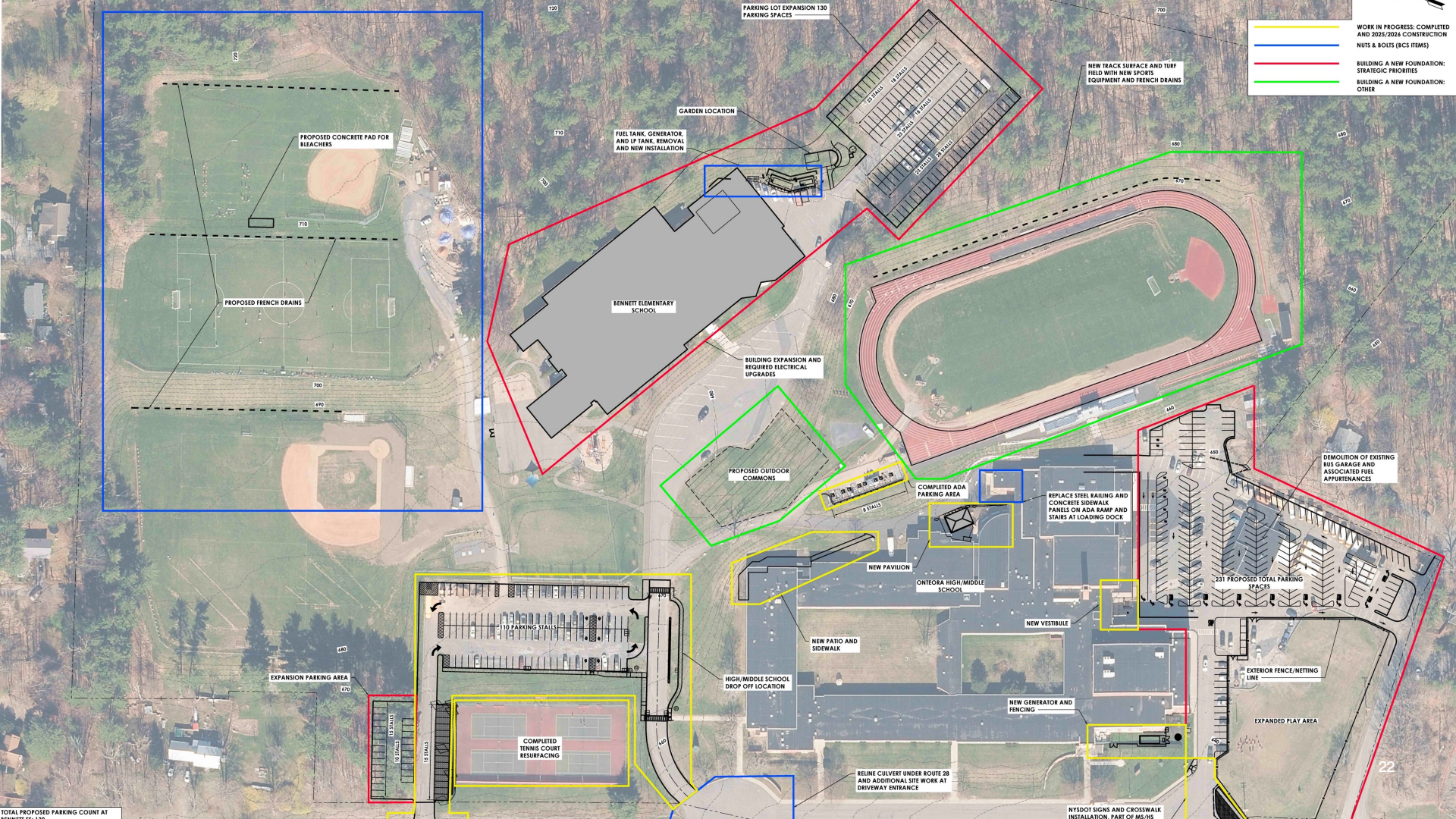




# CAMPUS







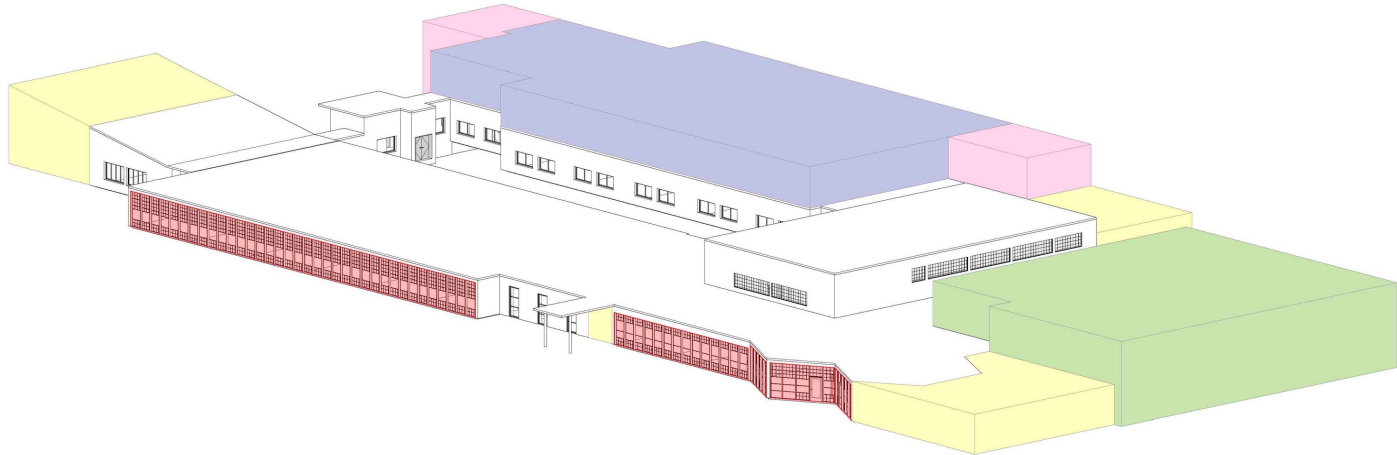
# ELEMENTARY





- 

### EXISTING BUILDING





# MIDDLE SCHOOL / HIGH SCHOOL





## Gathering Your Insights with 3 Prompts

Before departing the session, each attendee was invited to answer the 3 prompts listed below. These insights will shape the revisions to the conceptual designs for the elementary building, middle school/high school building and the overall campus as well as how we share information in the upcoming Community Forums. Your insights and participation are greatly appreciated.

1. What is most important to me?
2. What's missing?
3. What questions do I still have?



## What We Covered

**Please see the following documents for an overview of the community insights captured during the discussion:**

**What We Covered – Visual Summary  
Your Ideas – Main Campus Plan**



## Thank you for your participation

**Thank you to all who attended for your thoughtful perspectives and questions. We hope to see you on January 15 for the next Community Forum. District administrators and their architecture partners will work to answer your questions and integrate your insights into our next round of conceptual designs.**





“

*The path from dreams to success does exist. May you have the vision to find it, the courage to get on to it, and the perseverance to follow it.”*

– KALPANA CHAWLA



# Thank You!



LEADERSHIP  
DEVELOPMENT  
& DESIGN

**Sharon Lipovsky**

332.333.4150

sharon@pointroadstudios.com

pointroadstudios.com

---



There is  
nothing  
stopping  
you.