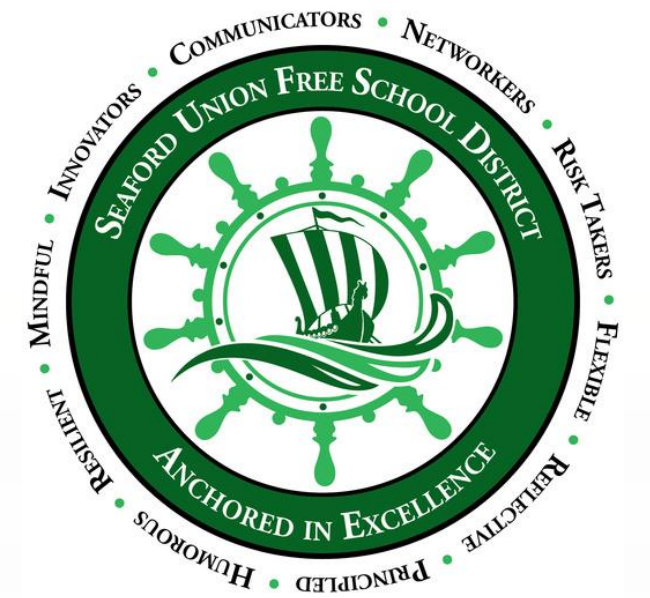


Seaford Union Free
School District



STATE OF THE DISTRICT

December 11, 2024

PRESENTED BY:

DR. ADELE PECORA
SUPERINTENDENT OF SCHOOLS

DR. ALISON OFFERMAN-CELENTANO
ASSISTANT SUPERINTENDENT FOR CURRICULUM AND ASSESSMENT

MS. MARY CATHERINE CULELLA-SUN
EXECUTIVE DIRECTOR FOR STUDENT SUPPORT SERVICES



BOARD OF EDUCATION GOALS 2024-2025



Financial

Create a fiscally responsible and operationally efficient budget that maintains and enhances the integrity of all programs.

Teaching and Learning

Provide a dynamic, innovative learning environment that promotes and supports the academic growth of students so that they may realize their full potential while becoming responsible and productive citizens.

Social Emotional Learning and Safety

Create a safe, secure and nurturing environment that supports the physical, social and emotional needs of our students.

Operations and Facilities

Create a modern and competitive campus to enhance opportunities and growth for all Seaford students.

Communication

Maintain and enhance communication systems that ensure the open flow and accessibility of information with all stakeholders.





Anchored in Excellence: Making our Money Work for Us



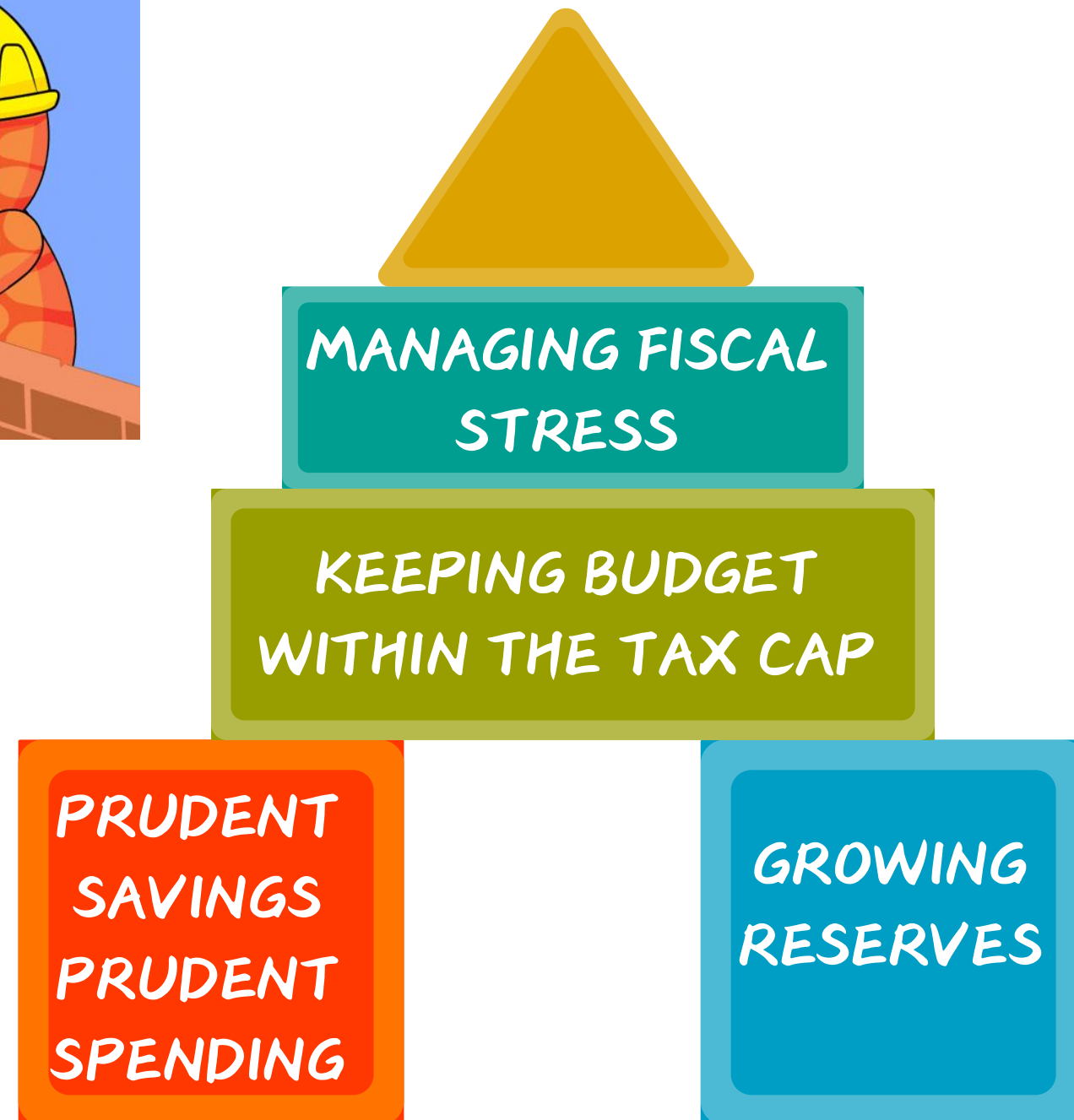


Financial

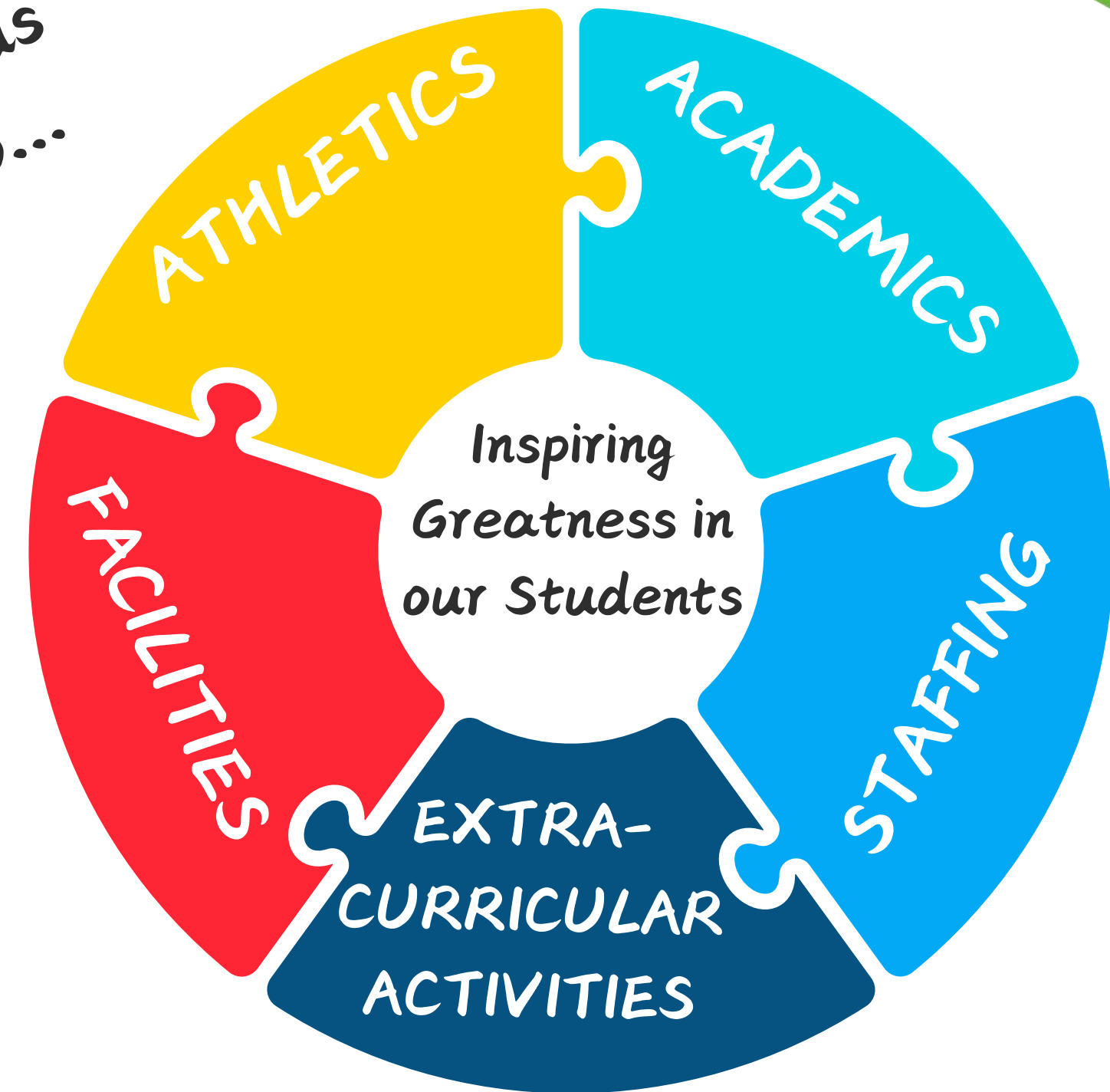
Board of Education Goal: Create a fiscally responsible and operationally efficient budget that maintains and enhances the integrity of all programs.



OUR STRONG FINANCIAL FOUNDATION



leads to...





MANAGING FISCAL STRESS & STRONG FINANCIAL RATING

8-Year Fiscal Stress Trend of No Designation

YEAR	TOTAL POINTS	SCORE CLASSIFICATION
2016	8.3	No Designation
2017	0.0	No Designation
2018	0.0	No Designation
2019	0.0	No Designation
2020	3.3	No Designation
2021	0.0	No Designation
2022	0.0	No Designation
2023	3.33	No Designation

<u>Classification</u>	<u>Point Range (Out of 100 total pts)</u>
Significant	65 - 100
Moderate	45 - 64.9
Susceptible	25 - 44.9
No Designation	0 - 24.9

Our Moody Aa2 rating reflects our District's high quality and low risk financial condition.



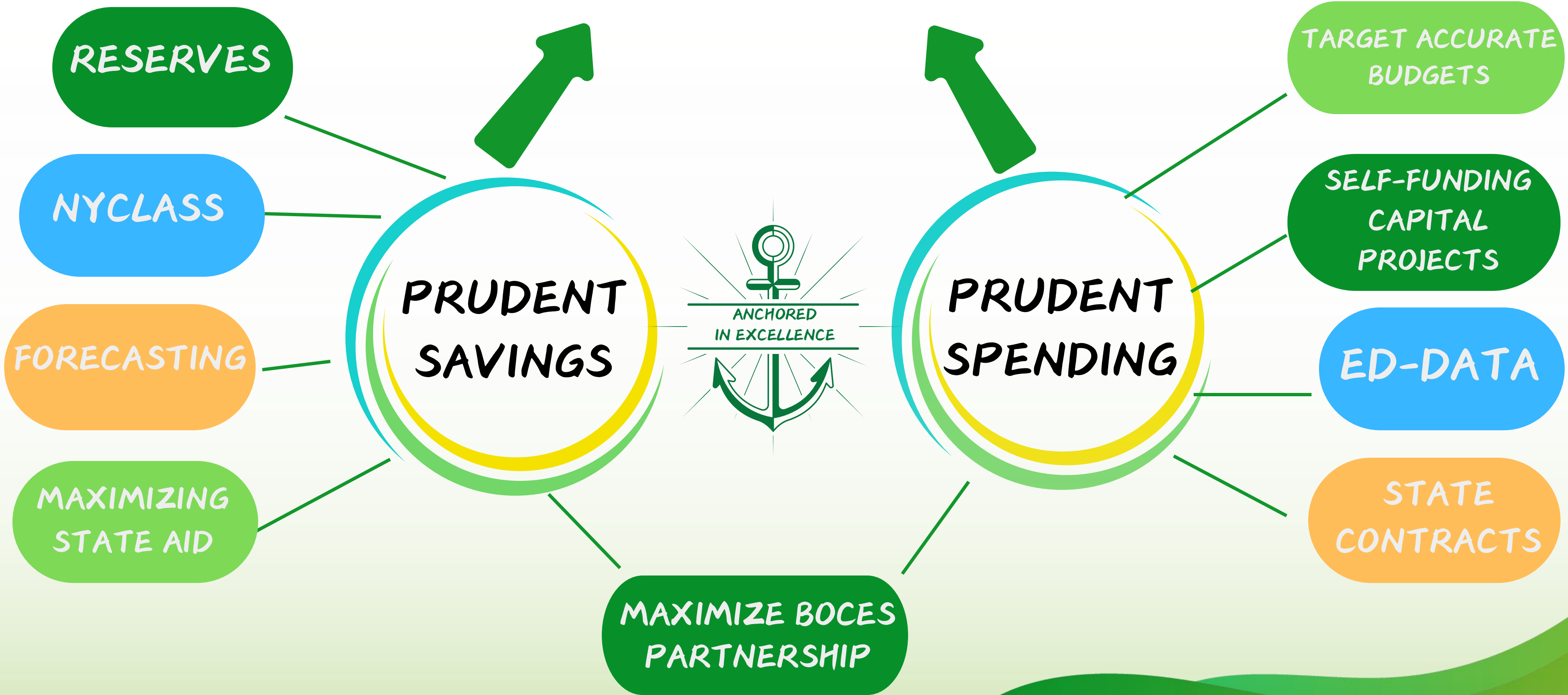


**BUDGETS ARE WITHIN
THE TAX CAP**



School Year	Maximum Allowable Tax	Tax Levy
2018-2019	2.69%	2.69%
2019-2020	4.04%	2.98%
2020-2021	3.58%	3.58%
2021-2022	1.50%	1.50%
2022-2023	2.89%	2.45%
2023-2024	2.37%	2.37%
2024-2025	2.27%	2.27%
Average	2.76%	2.55%

STRONG FINANCIAL CONDITION





Building Reserves: Earning Interest RATHER THAN Paying Interest to Put a Roof Over Our Heads



BY NOT GOING OUT TO BOND, WE ARE
SAVING TAXPAYERS \$7.9 MILLION IN
INTEREST

EARNED \$1.1 MILLION IN INTEREST
IN 23-24 AND WE ARE CONTINUING
THIS TREND IN 24-25



MAINTAINING RESERVES



Maintaining reserves allows the District to enhance our campuses providing our students with state-of-the-art facilities.



MANOR/HARBOR
LIBRARIES



HARBOR ASPHALT



MANOR/HARBOR
CEILINGS & LIGHTING



PRESS BOX & STADIUM
SOUND UPGRADE



COMFORT STATION



MANOR SIDEWALK



HARBOR
PLAYGROUND



MANOR
PLAYGROUND TURF



HS AUDITORIUM
STAGE/PROJECTOR



HS CAFETERIA





Anchored in Excellence: Inspiring Greatness in ALL Seaford Scholars





Teaching & Learning

Board of Education Goal: Provide a dynamic, innovative learning environment that promotes and supports the academic growth of students so that they may realize their full potential while becoming responsible and productive citizens.



Inspiring Our Scholars in the Learning Environment



SEAFORD
SCHOLARS



HIRING



PROFESSIONAL
DEVELOPMENT



SECONDARY
PROGRAMS

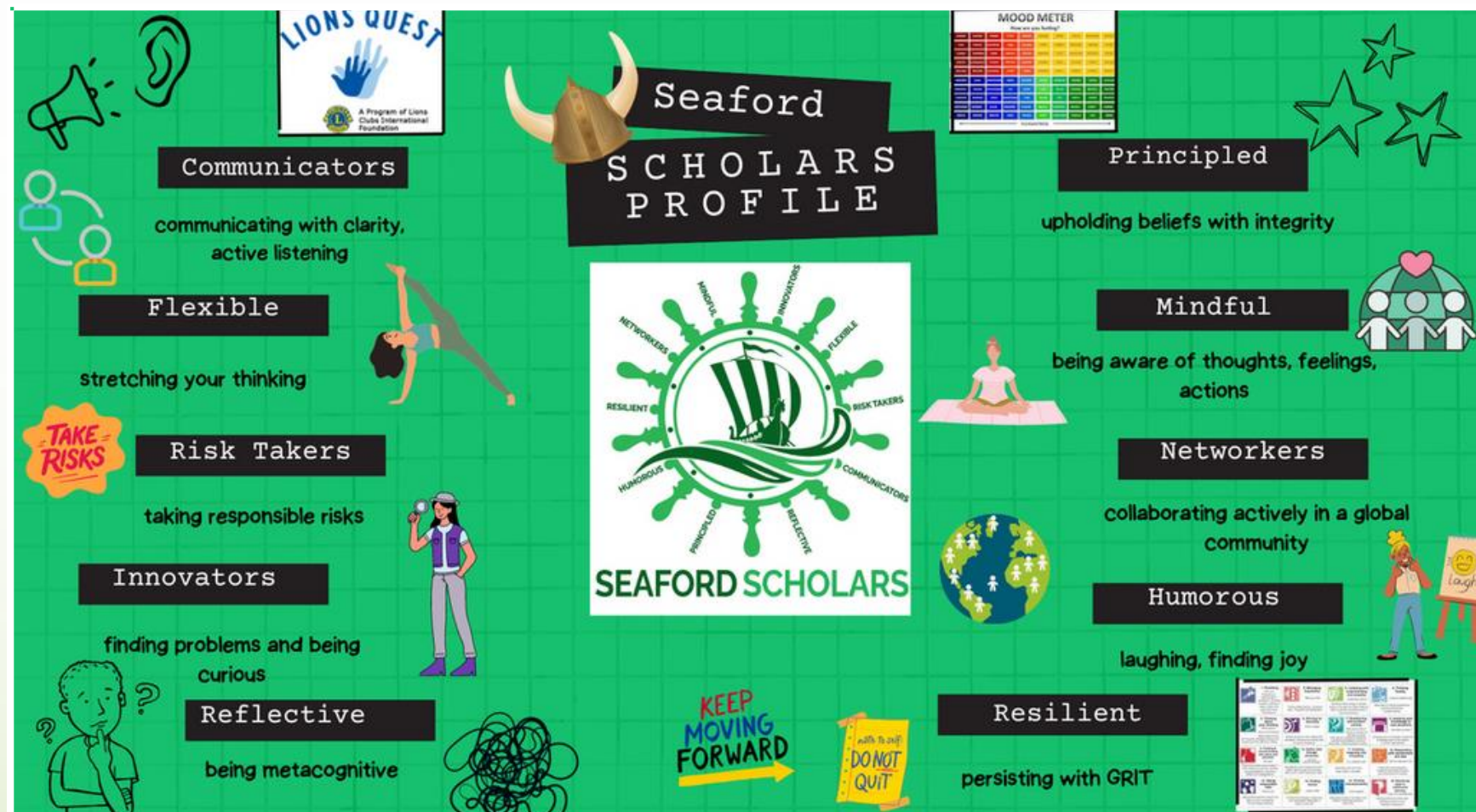


ELEMENTARY
PROGRAMS





Anchored in Excellence: Inspiring Greatness in ALL Seaford Scholars



The Seaford Scholar Profile empowers students to become learners and leaders who create a better present and future. The Seaford Scholar Profile incorporates our SEL programs: Habits of Mind, RULER, Lion's Quest, Growth Mindset, and Innovator's Mindset. The profile characteristics are traits that we envision our students will develop on their journeys throughout their time in the Seaford Schools (K-12) and as they embark on their future endeavors.



Meet our Seaford Scholars Team



Seaford Scholars
Elementary Team

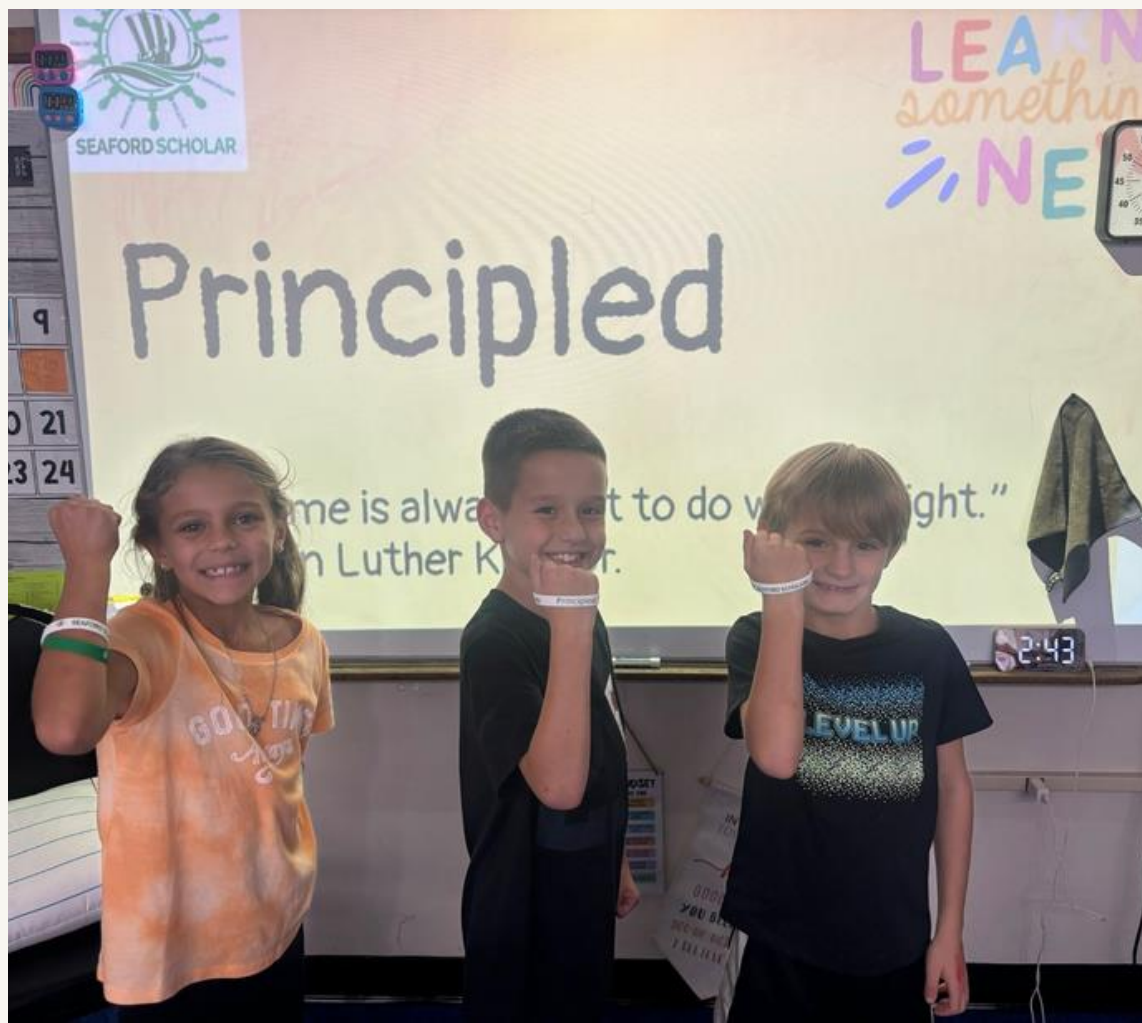


Seaford Scholars
Middle School Team



Seaford Scholars
High School Team





SEAFORD SCHOLARS BRACELETS



Each month students can earn bracelets for demonstrating the trait of the month

SEAFORD SCHOLARS ASSEMBLY

Both schools launched the school year by introducing the Seaford Scholar Traits! All students left the assembly with a "Seaford Scholar Bracelet! "





Career Day
NETWORKING

Teaming Events
COMMUNICATORS

Visits with Lucy
HUMOROUS

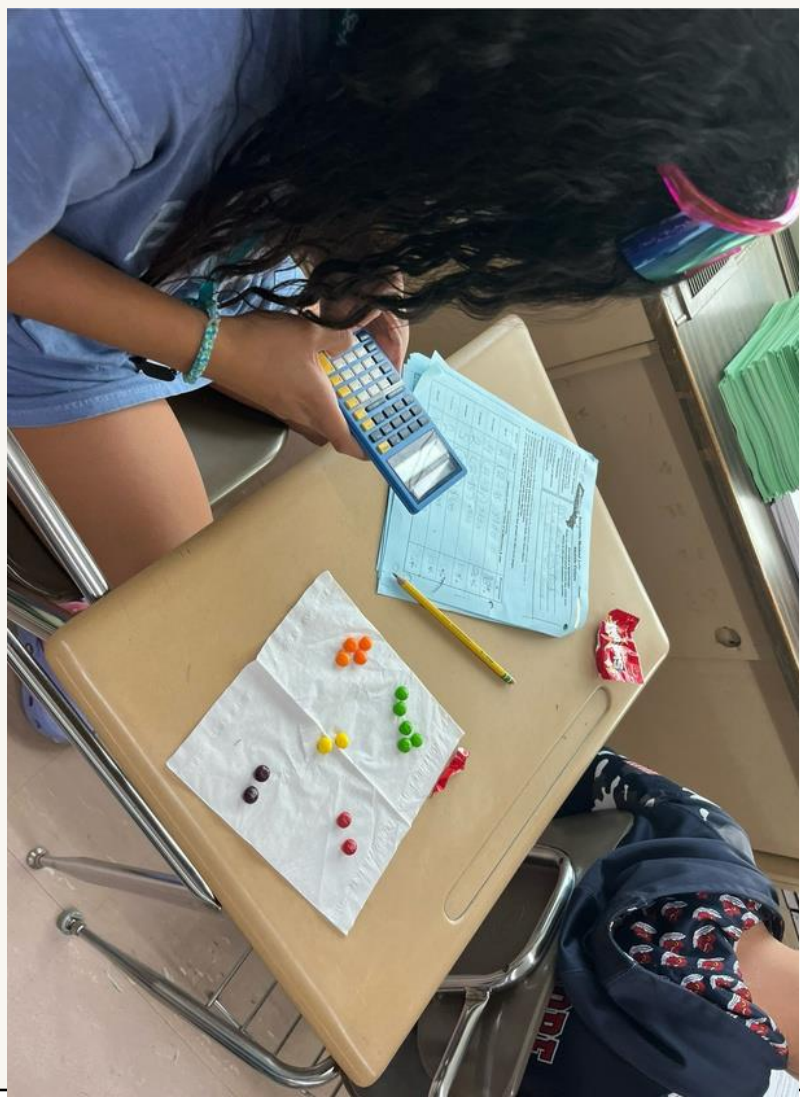
Project Based Learning
INNOVATORS

School Clubs
RISK TAKERS

A.S.K. Lessons
MINDFUL

SMS Connections with Seaford Scholars

Traits



Front

Back

SEAFORD SCHOLARS

PRINCIPLED

Seaford Scholars



RAFFLE
TICKET

NAME



SEAFORD SCHOLARS

SEAFORD MIDDLE SCHOOL
PRINCIPLED
ACHIEVEMENT AWARD

Awarded to:

Principal

Team

SEAFORD SCHOLARS OF THE MONTH



PRINCIPLED

COMMUNICATORS

HUMOROUS

REFLECTIVE

INNOVATORS

FLEXIBLE

NETWORKERS

RISK TAKERS

MINDFUL



Front

Back

Front

Back

SEAFORD SCHOLARS

PRINCIPLED

SEAFORD SCHOLARS

PRINCIPLED

Identify the Seaford Scholar Trait

Write the name of the trait next to each scenario. Each trait from the word bank is used only once.

WORD BANK: Innovator Risk-taker Communicator Flexible Principled Networker Reflective Humorous Mindful Resilient

1. After completing a long-term project, you take time to analyze the outcome and think about your successes and areas of improvement.

2. You discover that a classmate cheated on several tests during the past quarter. You decide to report the unethical behavior to an administrator.

3. A friend struggled with a challenging class last year. By working with classmates and forming study groups, they gained valuable insights and resources that helped them improve their grades.

4. Last year, a classmate tried out for a travel sports team and did not make the team. They practiced all year, improved their skills, and as a result, they were selected for the team this year.

5. You helped resolve a conflict between classmates by listening to both sides, creating a calm discussion, and helping them find a solution.

6. You taught yourself how to play the guitar. You make a video of your new skills and post it to social media for self-promotion.

7. You've become self-aware that you spend too much time on your phone. You set boundaries for your phone use, taking breaks from screens and practicing digital detox.

8. A friend changes their 2nd period study hall to a 4th period photography class. As a result, their class schedule changes significantly, and they must adjust to new teachers and classmates.

9. Your social studies teacher always finds a way to lighten the mood with witty comments and clever jokes that keep the students entertained and engaged.

10. A friend explores new artistic techniques and mediums in their artwork, experimenting with unconventional styles to express creativity, originality, and to create unique pieces of art.

Connect the Seaford Scholar Trait to a Person

Directions: Look at the list of Seaford Scholar Traits, for each trait think of an individual who you think is a good example of that trait. You may choose anyone who is significant to you for example: celebrities, athletes, musicians, teachers, friends, etc. (you cannot choose yourself)

Seaford Scholar Trait	Individual
Networking	
Risk-Taker	
Communicator	
Mindful	
Reflective	
Flexible	
Resilient	
Humorous	
Innovator	
Principled	

Identifying Seaford Scholar Traits in Your Own Life

Directions: Complete the chart below with your teammates. You will work together to identify situations in your own lives that reflect the traits of a Seaford Scholar. Be descriptive!

Trait	Situation
Networkers	
Risk Taker	
Communicator	
Mindful	
Reflective	
Flexible	
Resilient	
Humorous	
Innovator	
Principled	

SHS Assembly Activity



SHS IS THRIVING WITH SEAFORD SCHOLARS AT THE HELM



JOB FAIR

SEAFORD UFSD

COME JOIN OUR TEAM!



Inspiring Excellence Through Exceptional Hiring 2024-2025

- 17 new probationary professional staff
- 53 (21% faculty) non-tenured probationary professional staff members
- Our extensive hiring process includes screening interviews, full panel interviews, portfolios/writing samples, demonstration lessons, Central Administration interviews, reference/background checks, and onboarding/transition process.



Seafood Bus Tour

ITINERARY

Day 1: Thursday, August 24th

8:30 AM: Check-in & Tickets

8:40 AM: Sightseeing

9:00 AM: Seafood Trivia /Sightseeing




Apply Now



BUS TOUR TICKET

Departure Location: **SEAFORD HIGH SCHOOL**
Destination Location: **ALL AROUND THE TOWN**

Departure Time: **8:30 AM** Travel Duration: **1 HOUR**
Arrival Time: **9:30 AM**

www.reallygreatsite.com +123-456-7890

Inspiring Excellence Together Through Growth in PROFESSIONAL DEVELOPMENT



Providing professional development that is engaging,
motivating, and leads to professional excellence

WE ARE ALL SEAFORD SCHOLAR EDUCATORS

- Districtwide Professional Development Committee
- Professional Learning Communities
- Wantagh-Seaford TRACT Center
- Micro-courses led by Administrators and Teachers
- Administration Retreat
- Content Experts and Consultants
- New Teacher and New Administration Workshops
- 8 hours of Professional Development (Districtwide)
- Superintendent's Conference Days (August/November)
- Model School Days





Inspiring Greatness in Our Schools



Four Transformations



Adopt a NYS
Portrait of a
Graduate



Redefine Credits and
Learning
Experiences



Sunset
Diploma Assessment
Requirements



Move to One NYS
High School
Diploma



Blue Ribbon Commission Vision

How success in P-12 education is defined

Diploma

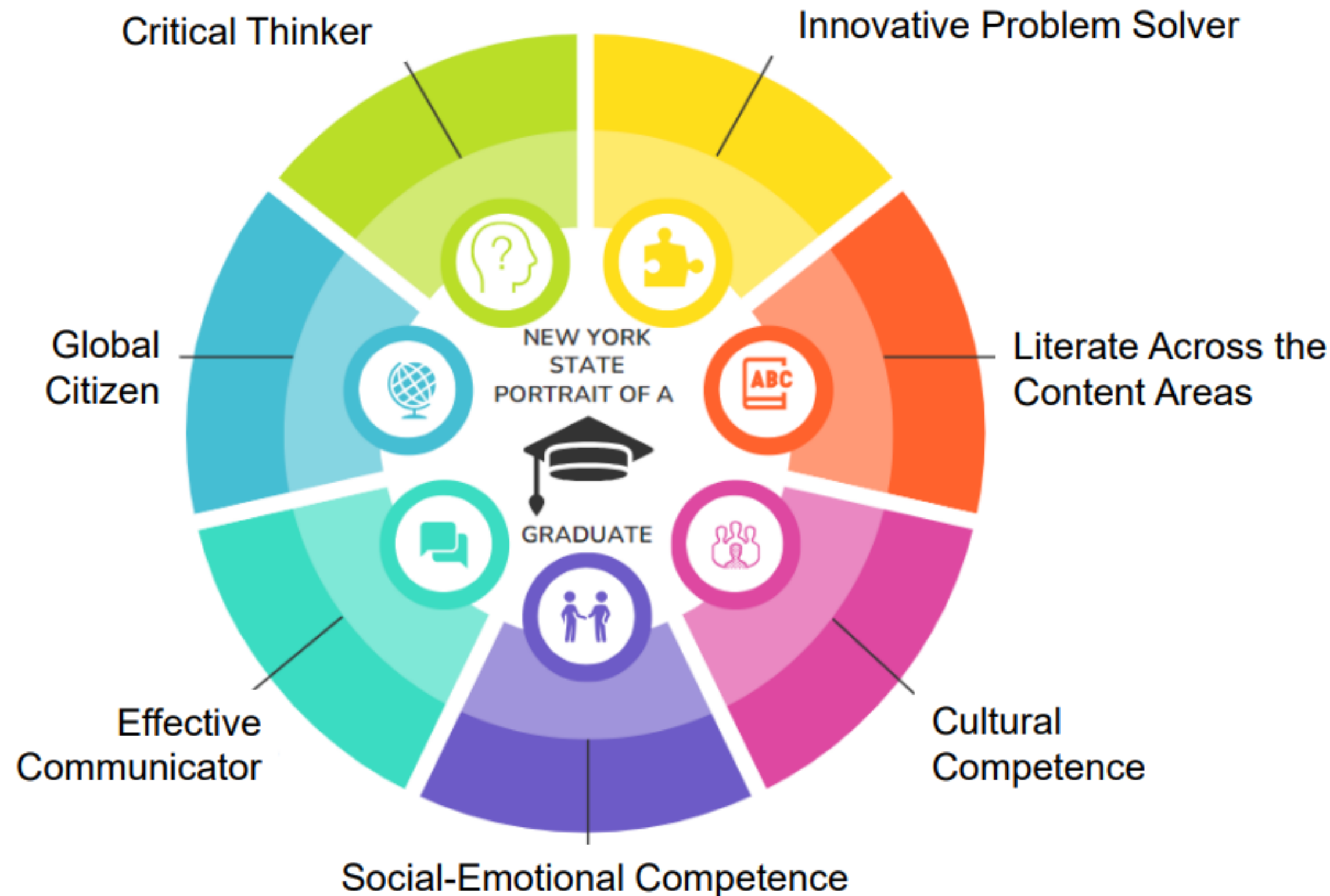
Based on the essential skills, knowledge, mindsets, and attributes needed for success in 21st century life, college, careers, service, and citizenry

NYS Portrait of a Graduate

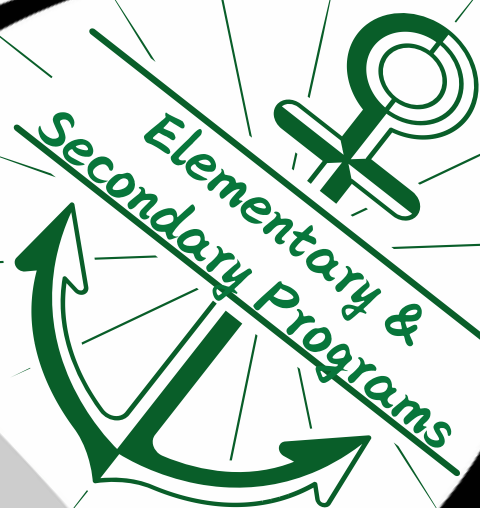
Students demonstrate proficiency through evidence in multiple ways



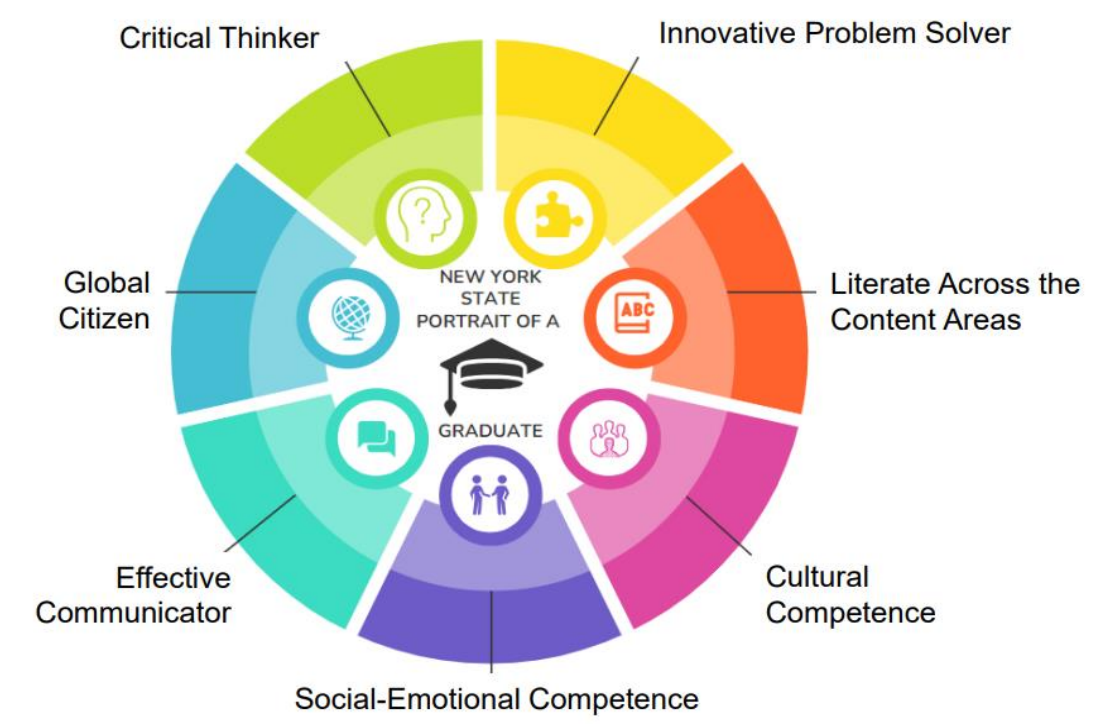
Portrait of a Graduate



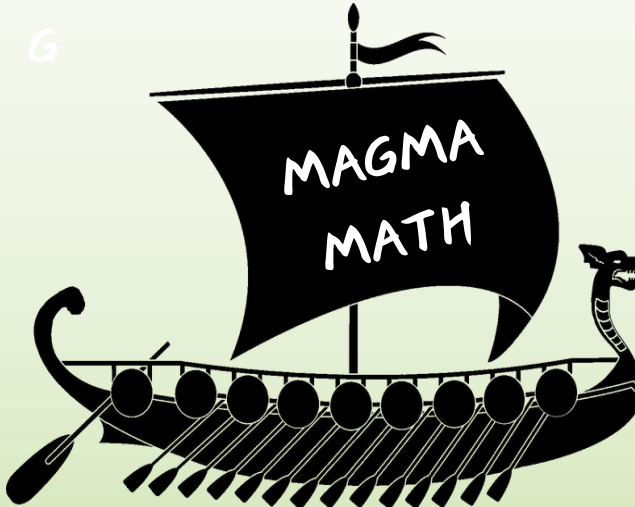
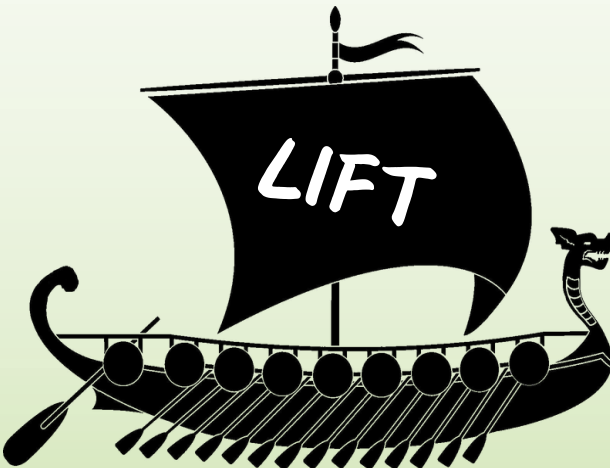
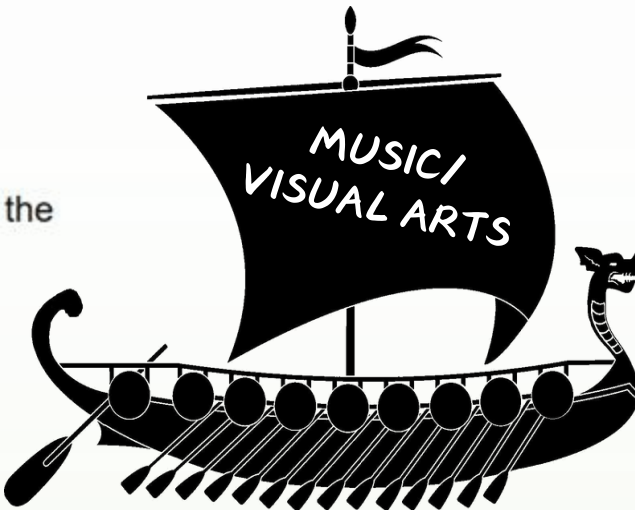
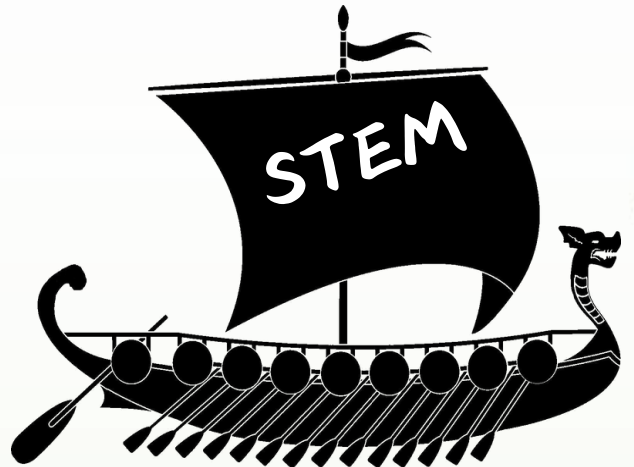
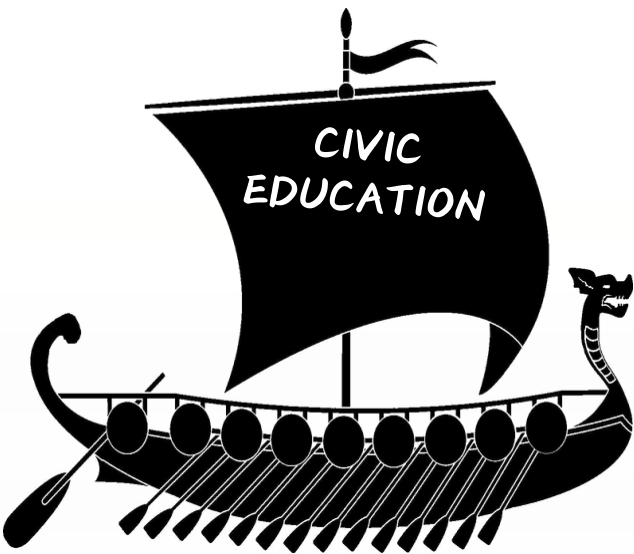
All students must demonstrate proficiency in each component of the Portrait of a Graduate to earn a high school diploma.



Filling the Portrait of a Graduate Bucket



Inspiring Greatness in Our Elementary Seaford Scholars





Inspiring Greatness in Our Scholars at the Secondary Level



Seal of Civic Readiness

SMS Exploratory Programs

Libraries as Inquiry Hubs

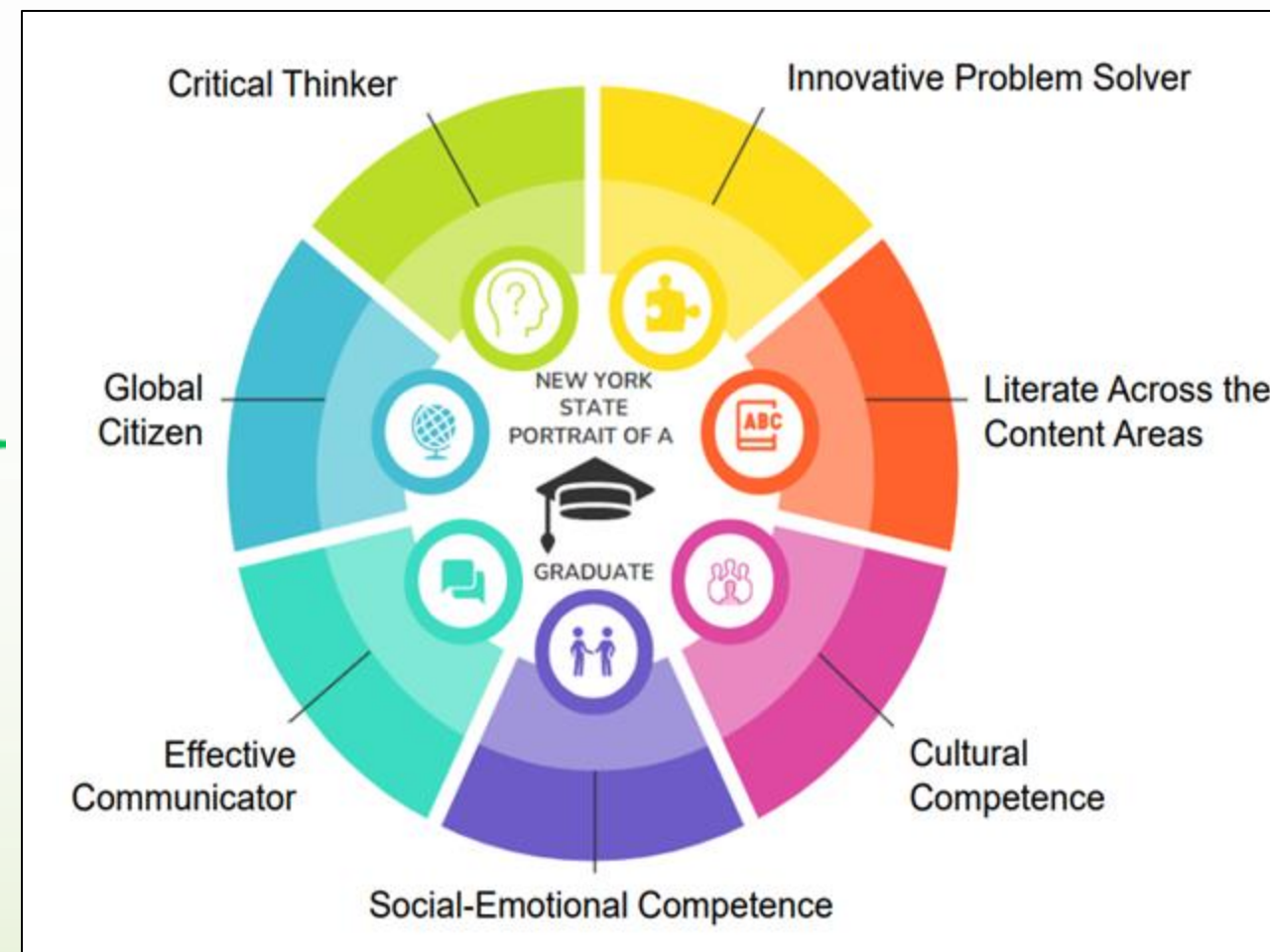
Project Lead the Way

Schools to Watch

College & Career Planning

Business Network Opportunities

AP Access



Research Courses

Seal of Billiteracy

Robust Fine & Applied Arts Offerings

ETC/EMT Programs

College Course Availability

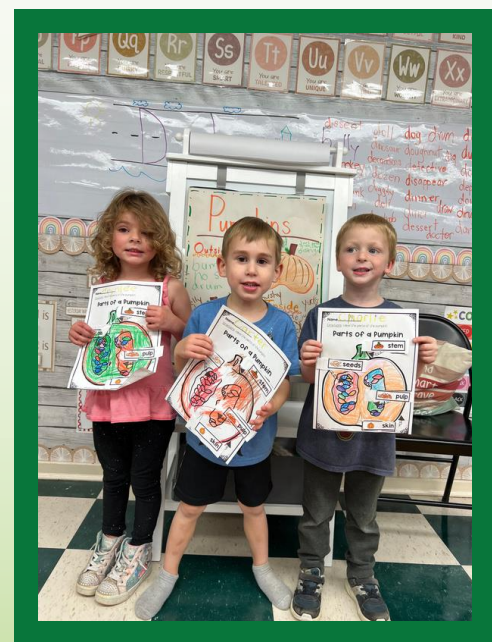
Student Leadership

Student Interest Clubs

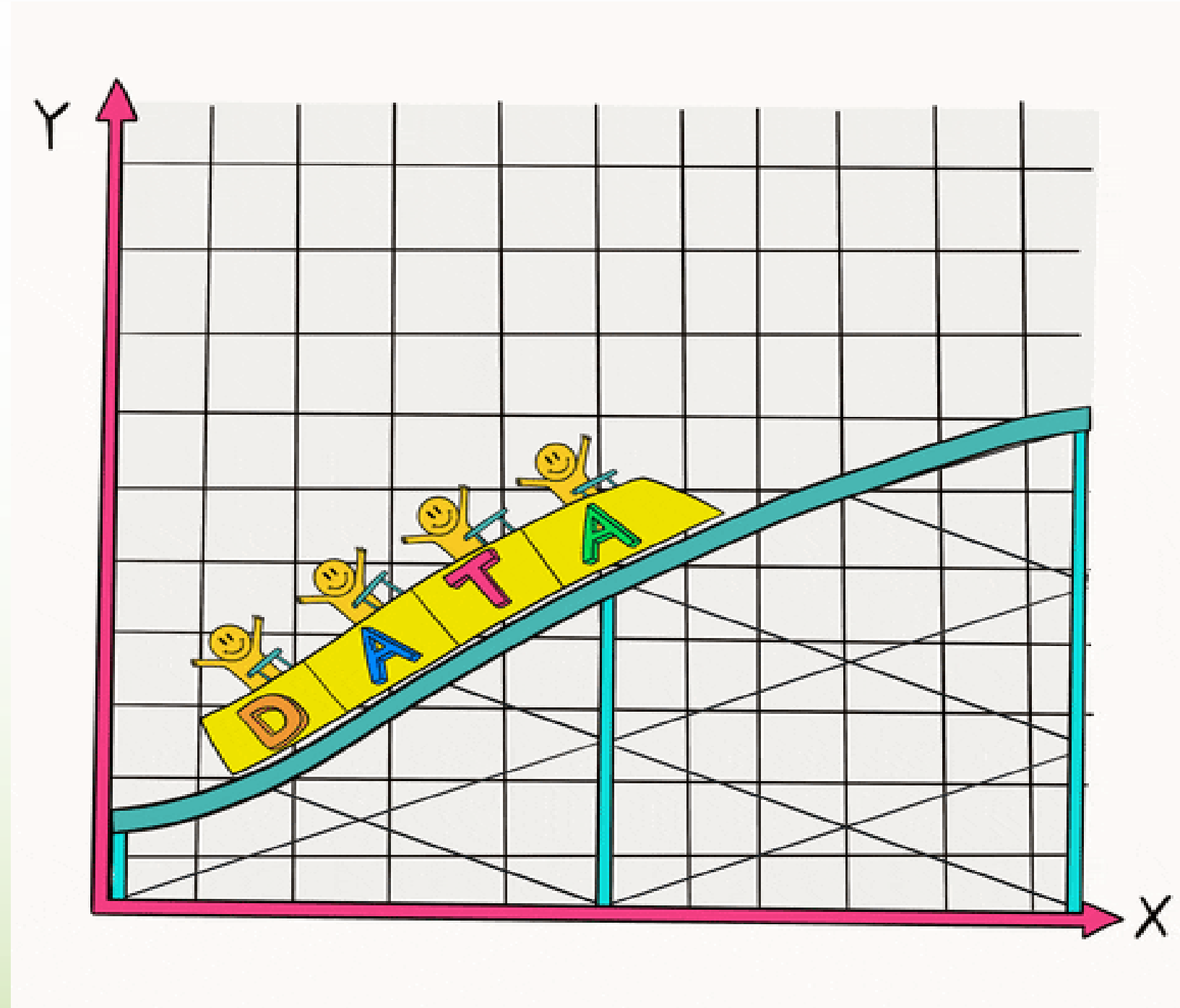
Wellness Centers



Inspiring Greatness in Our Scholars at the UPK Level



STUDENT ENROLLMENT AND ASSESSMENT DATA





ELA & Math NYS Exams: Participation and Proficiency Grades 3 - 8

Grade Level	ELA % of Seaford Students Taking Exam	Seaford Proficiency Scores of L3 & L4 for students taking exam	Region Proficiency Scores of L3 & L4 for students taking the exam
3	68%	54%	52%
4	48%	68%	61%
5	40%	51%	55%
6	51%	46%	56%
7	32%	63%	58%
8	23%	78%	61%

Grade Level	Math % of Seaford Students Taking Exam	Seaford Proficiency Scores of L3 & L4 for students taking the exam	Region Proficiency Scores of L3 & L4 for students taking the exam
3	72%	52%	67%
4	47%	90%	75%
5	53%	62%	64%
6	44%	60%	69%
7	33%	84%	71%
8	21% *	35%	48%

* Does not include Algebra I Students



NWEA MAP Achievement RIT Scores

Seaford / National Norms

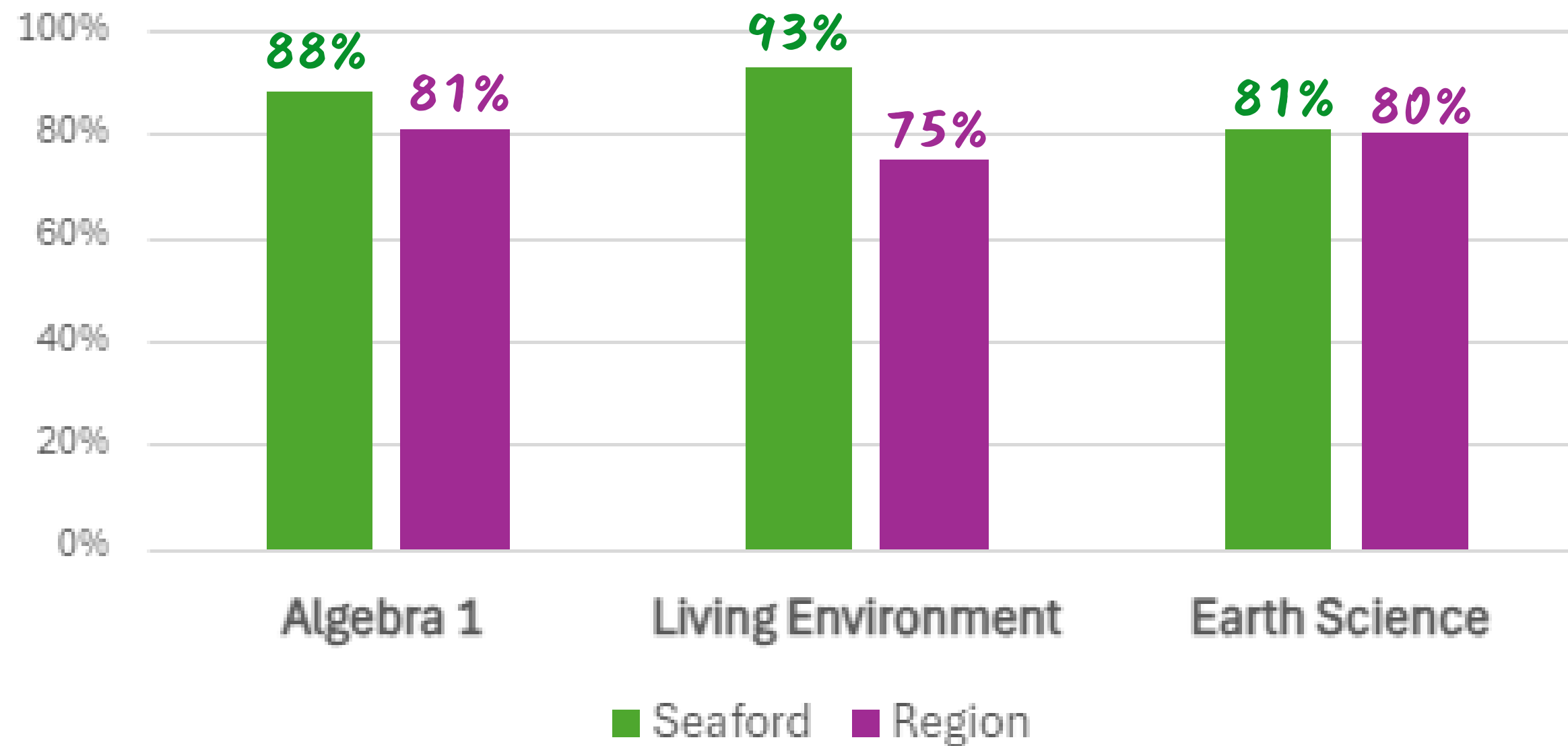
Fall 2024



Mathematics			Reading		
Grade	Seaford	National	Grade	Seaford	National
Kindergarten	143	140	Kindergarten	140	137
1	163	160	1	159	156
2	180	175	2	178	172
3	188	188	3	188	187
4	200	200	4	198	197
5	209	209	5	205	204
6	216	215	6	209	210
7	222	220	7	214	214
8	218	225	8	215	218
			9	220	219
			10	219	221

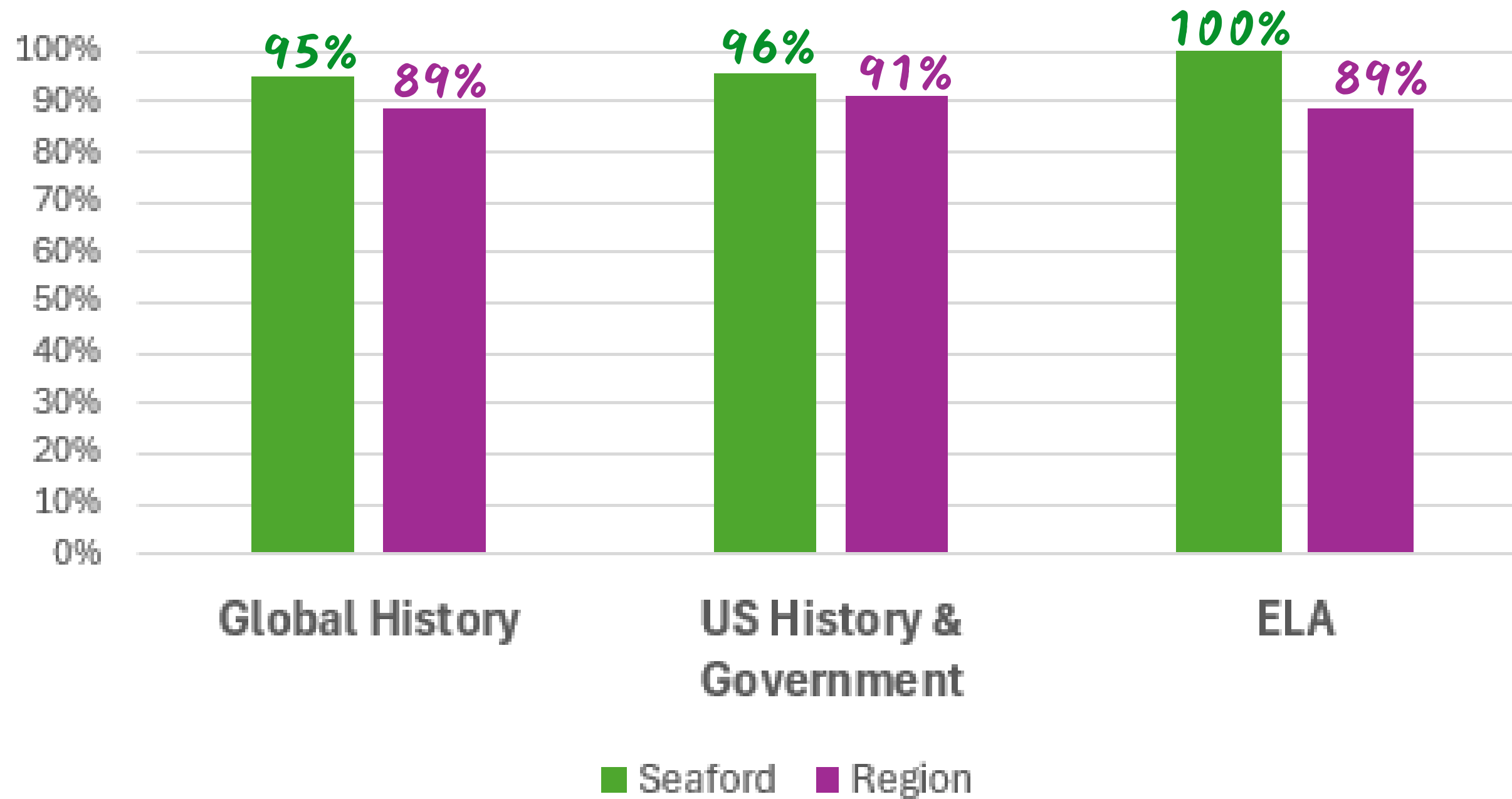


2024 Math and Science Regents: Percent Proficient Seaford vs. Region





2024 Humanities Regents: Percent Proficient Seaford vs. Region



Elective Regents Exams Summary 2024

Seaford UFSD							Nassau County Region					
2024 Jan. and June Regents	Number Taking Exam	Number Passing Exam	(Quality Factor) % Passing Exam	Average Grade Enrollment 10-12	(Quantity Factor) % Average Grade Enrollment Taking Exam	Summary (% Average Grade Enrollment Passing Exam)	Number Taking Exam	Number Passing Exam	(Quality Factor) % Passing Exam	Average Grade Enrollment 10-12	(Quantity Factor) % Average Grade Enrollment Taking Exam	Summary (% Average Grade Enrollment Passing Exam)
Geometry CC	158	111	70%	166	95%	67%	14,636	10,977	75%	16,631	88%	66%
Algebra II CC	138	122	88%	166	83%	73%	11,785	10,640	90%	16,631	71%	64%
Chemistry	111	95	86%	166	67%	57%	10,757	8,547	79%	16,631	65%	51%
Physics	45	29	64%	166	27%	17%	4,900	3,952	81%	16,631	29%	24%



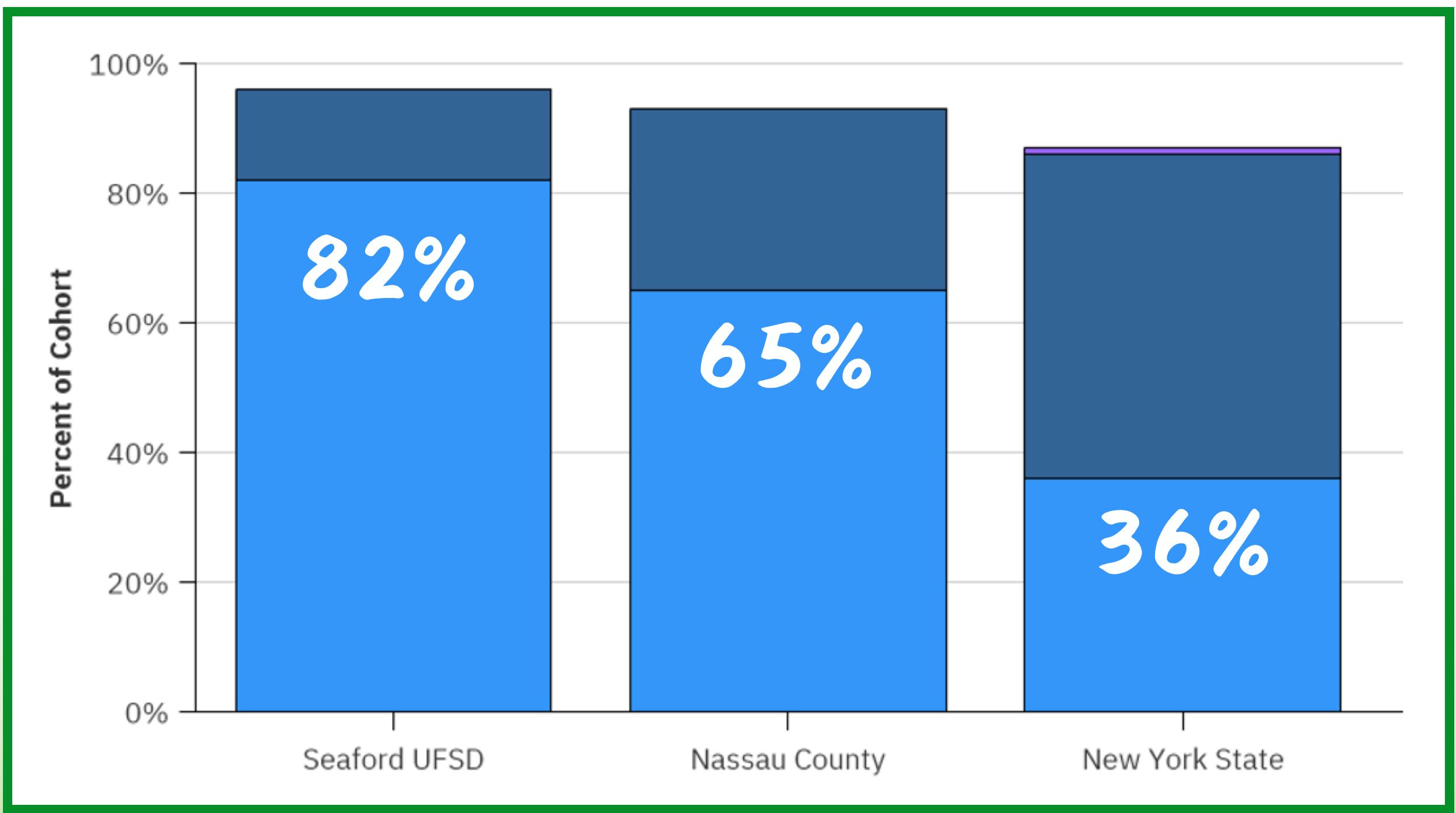
High School Advanced Placement and Graduation Data





Percent of Seaford Graduate Diploma Types: 2023

Seaford vs. Region vs. NYS



Electrical Training Center & Emergency Medical Services

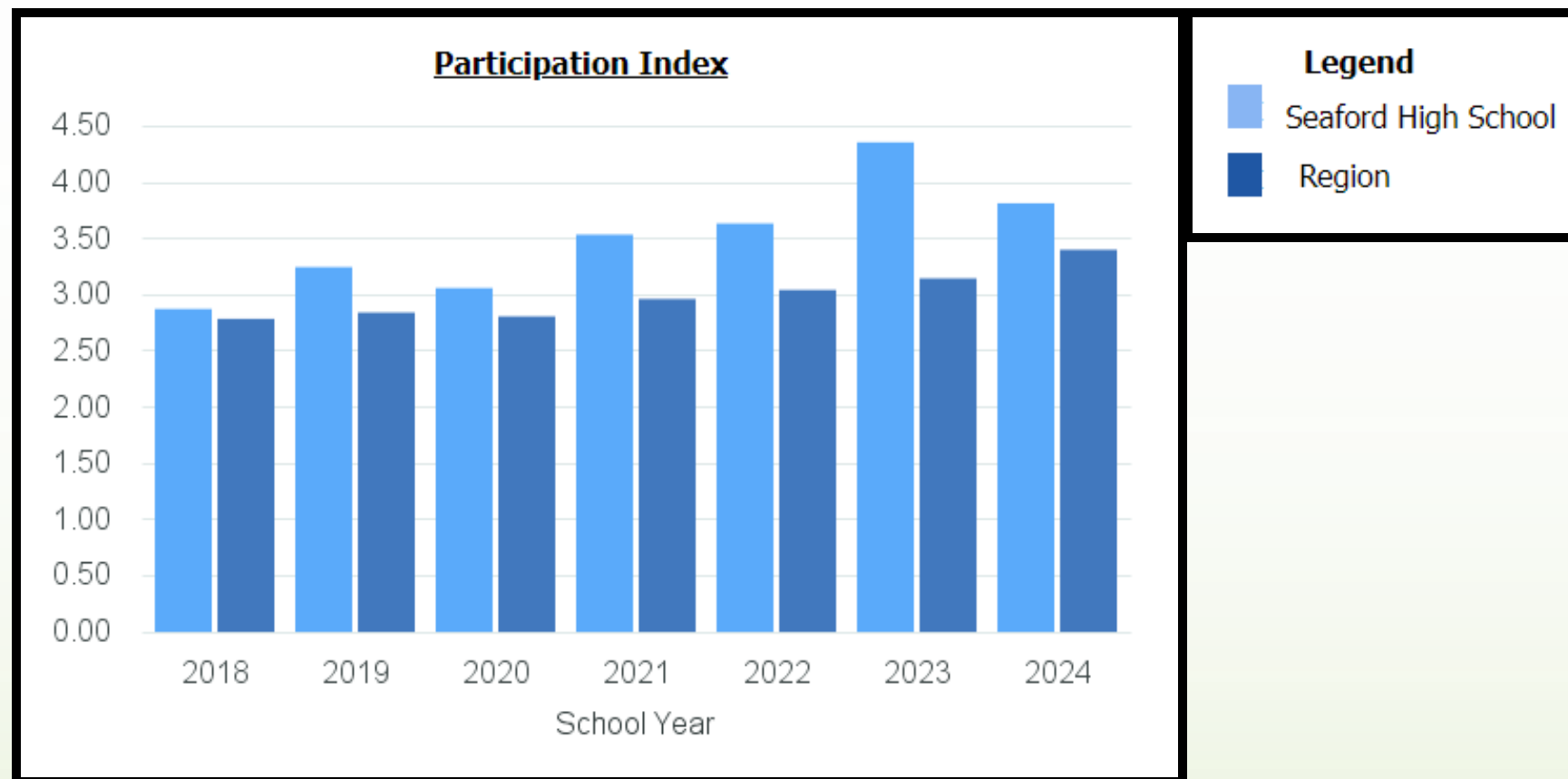


The number of our students in the Electrical Training Center Program has almost doubled and our Emergency Medical Training Program has become more popular!





Participation in AP Courses and # of Tests Taken Continues to Increase



**School
Year**

**# of
Students**

**# of
Enrollments**

2023-24

319

687

2024-25

331

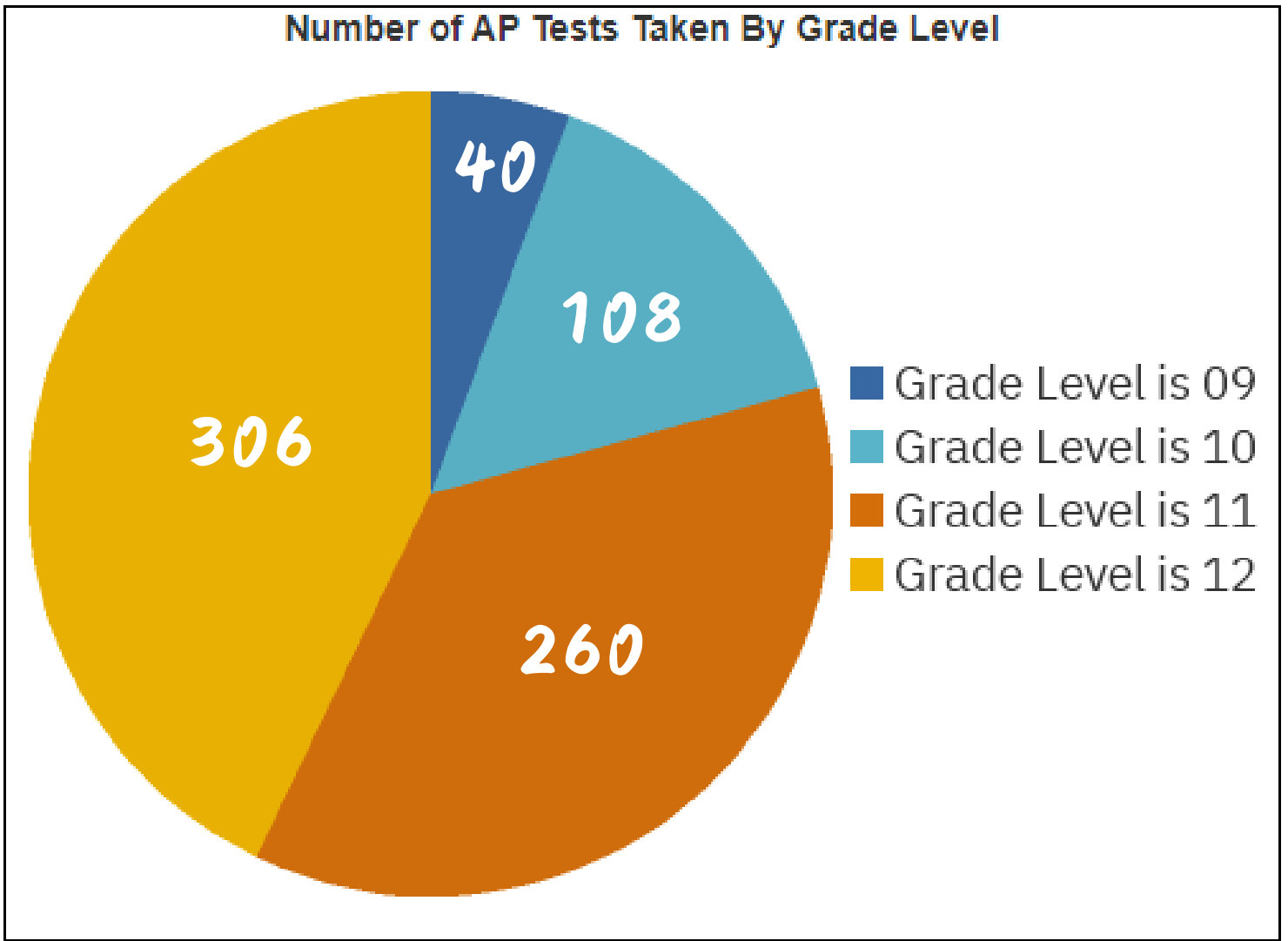
748



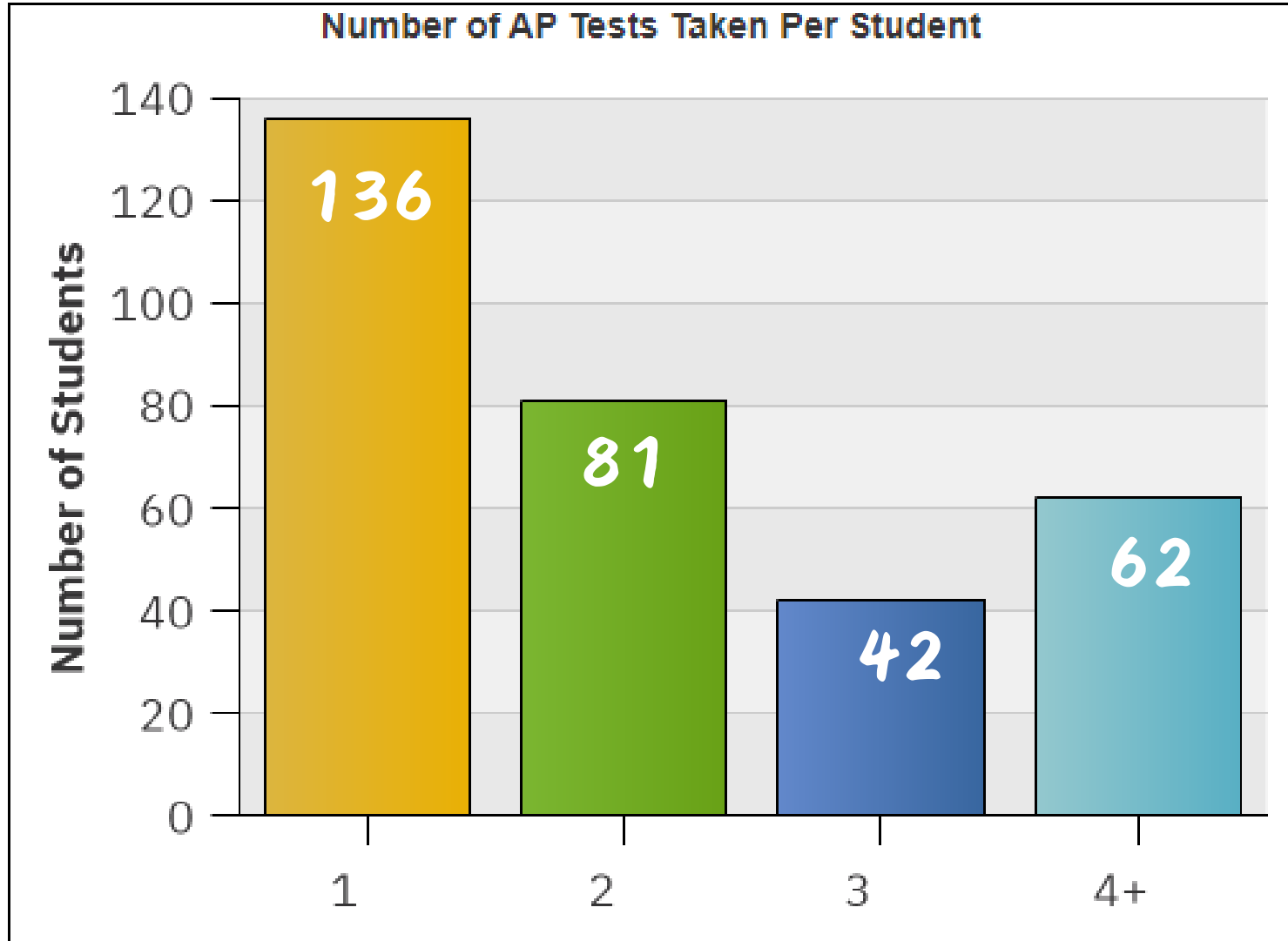
Number of Tests Taken by Grade Level and Per Student: 2024



Number of AP Tests Taken By Grade Level



Number of AP Tests Taken Per Student



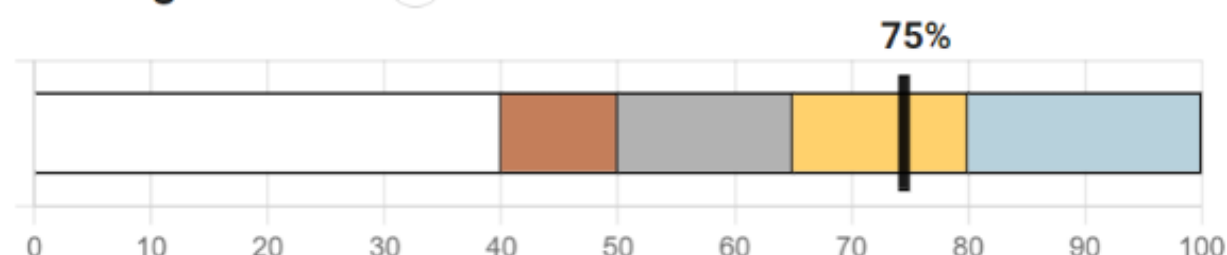


AP 2024 School Honor Roll: Gold

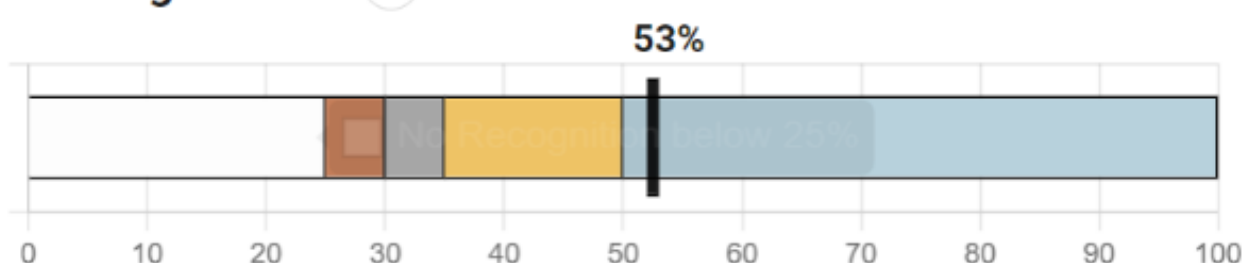
Congratulations! Seaford High School has earned Gold recognition on the 2024 AP School Honor Roll.

Class of 2024

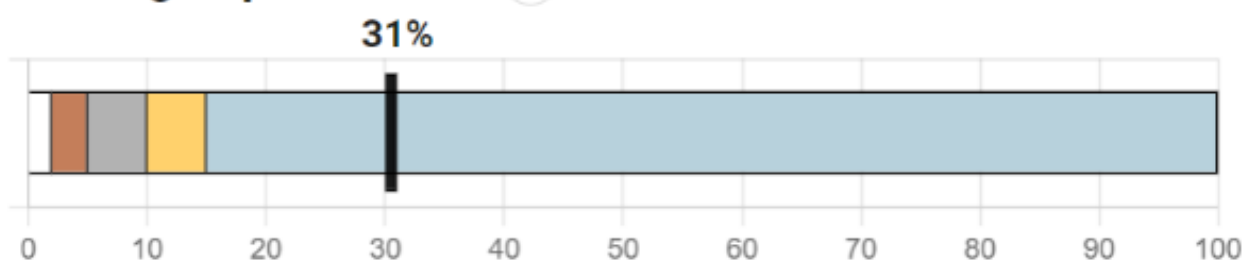
College Culture ? GOLD



College Credit ? PLATINUM



College Optimization ? PLATINUM



GOLD

AP 2024 School Honor Roll
Seaford High School



AP Access Award ?

The 2024 AP School Honor Roll also recognizes Seaford High School as providing all students the chance to participate in AP, including students of underrepresented populations.





Seal of Civic Readiness & Seal of Biliteracy



Academic Year	# Students Awarded Seal of Biliteracy	# Students Awarded the Seal of Civic Readiness
2021-2022	14	Not offered yet
2022-2023	17	Not offered yet
2023-2024	24	66



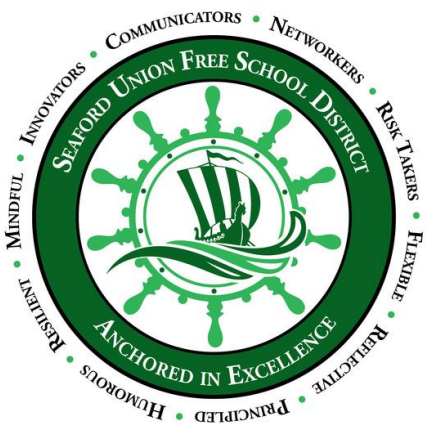


Historical Graduation Data

Year	# of Graduates	*Graduation Rate
2013	175	95.2%
2014	191	95.7%
2015	182	94.9%
2016	169	95.5%
2017	176	96.7%
2018	177	97.7%
2019	158	95.8%
2020	195	99.0%
2021	182	99.0%
2022	170	99.0%
2023	166	100.0%
2024	177	100.0%



Class of 2024: Sampler of 4-Year College Acceptances



Most Competitive	Boston University, Carnegie Mellon University, Colgate University, Cornell University, Duke University, Emory University, Fordham University, New York University, Northeastern University, Rensselaer Polytechnic Institute, Stony Brook University, University of Miami, University of Notre Dame, University of Richmond, Wesleyan University
Highly Competitive	Clarkson University, Clemson University, Florida State University, North Carolina State University, Ohio State University, Penn State University, Rochester Institute of Technology, Rutgers University, University of Connecticut, University of Florida, University of Georgia, University of Maryland, University of Michigan, University of Pittsburgh, United States Merchant Marine Academy
Very Competitive	Arizona State University, CUNY Hunter, Drexel University, Fairfield University, Indiana University, Ithaca College, James Madison University, Loyola University, Marist College, Michigan State University, SUNY Cortland, SUNY Geneseo, Syracuse University, Temple University, The Catholic University of America, University of Delaware, University of Massachusetts-Amherst, University of South Carolina, University of South Florida
Competitive	Coastal Carolina, Fashion Institute of Technology, High Point University, Hofstra University, Iona University, Johnson & Wales University, Long Island University, Manhattanville College, Mercy College, Molloy University, Pace University, Quinnipiac University, Sacred Heart University, University of Alabama, University of Rhode Island, University of Tampa, West Virginia University



Student Support Services



Special Education Services



Social Emotional Learning



Behavioral Health Services





Anchored in Excellence: Calling All Vikings!





Social Emotional Learning and Safety

Board of Education Goal: Create a safe, secure and nurturing environment that supports the physical, social and emotional needs of our students.

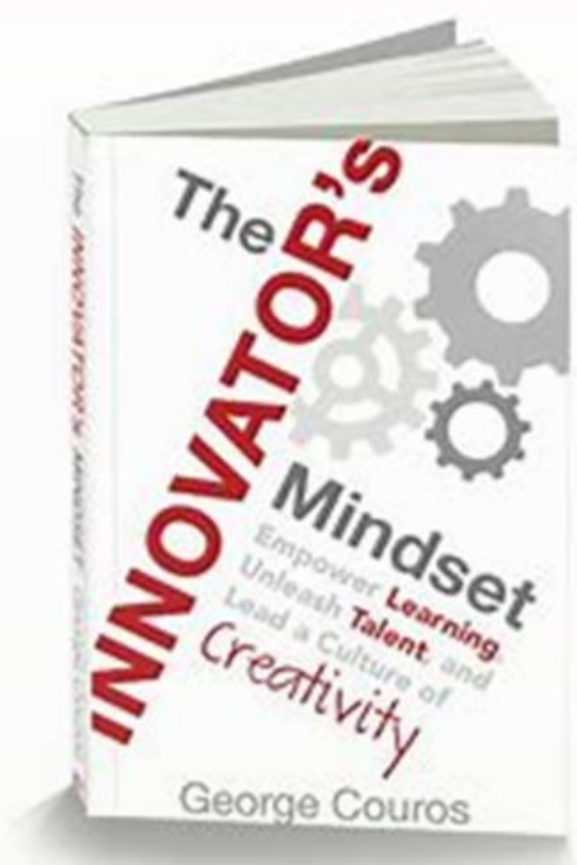


Our work is anchored in...



- ✓ **ACCESS** to a full continuum of services
- ✓ **INCLUSIVE** practices and connections
- ✓ **DEVELOPING** every Seaford Scholar
- ✓ **CELEBRATING** student success

Strong Foundation in Social-Emotional Wellness



MOOD METER

Enraged	Furious	Frustrated	Shocked	M	Hyper	Lively	Motivated	Ecstatic
Livid	Frightened	Angry	Restless	O	Energized	Cheerful	Inspired	Excited
Fuming	Apprehensive	Worried	Annoyed	O	Enthusiastic	Happy	Optimistic	Thrilled
Repulsed	Troubled	Concerned	Peevish	D	Pleasant	Joyful	Proud	Blissful
M	O	O	D	M	E	T	E	R
Disgusted	Disappointed	Grim	Sad	E	At Ease	Content	Loving	Fulfilled
Pessimistic	Lonely	Mopey	Bored	T	Relaxed	Secure	Chill	Grateful
Embarrassed	Depressed	Discouraged	Tired	E	Calm	Satisfied	Grateful	Carefree
Despair	Hopeless	Miserable	Exhausted	R	Relieved	Peaceful	Tranquil	Serene



Northwell Partnership

Access to Mental Health Provider

- Bi-weekly visits from Northwell adolescent psychiatrist
- Psychiatric evaluations conducted in district
- Discreet transport when needed

Expedited Appointments and Care

- Seaford students and families receive expedited appointments as a result of partnership
- Urgent care and hospitalization receives priority status

Consultation Support

- Consultation with educational teams and families providing pre-referral strategies.

Connection to Care

- Connection to providers both in and out of Northwell network
- Collaborate with families to secure providers aligned with private healthcare provider
- Wait time drastically reduced when connecting with high-demand services



Northwell Partnership

Access to Mental Health Provider

- Bi-weekly visits from Northwell adolescent psychiatrist
- Psychiatric evaluations conducted in district
- Discreet transport when needed

Expedited Appointments and Care

- Seaford students and families receive expedited appointments as a result of partnership
- Urgent care and hospitalization receives priority status

Consultation Support

- Consultation with educational teams and families providing pre-referral strategies.

Connection to Care

- Connection to providers both in and out of Northwell network
- Collaborate with families to secure providers aligned with private healthcare provider
- Wait time drastically reduced when connecting with high-demand services



**South Oaks
Hospital
Northwell
Health®**

Northwell Numbers

Since the beginning of our partnership, the following supports have been provided:

	2021-2022	2022-2023	2023-2024	2024-2025*
Consultation	19	20	25	11
Evaluations	17	27	23	13
Connections to Care	21	22	27	10
Discreet Transport	1	3	2	4

*Data as of November 22, 2024



Anchored in Excellence: Modernizing and Beautifying our Campus





Operations & Facilities

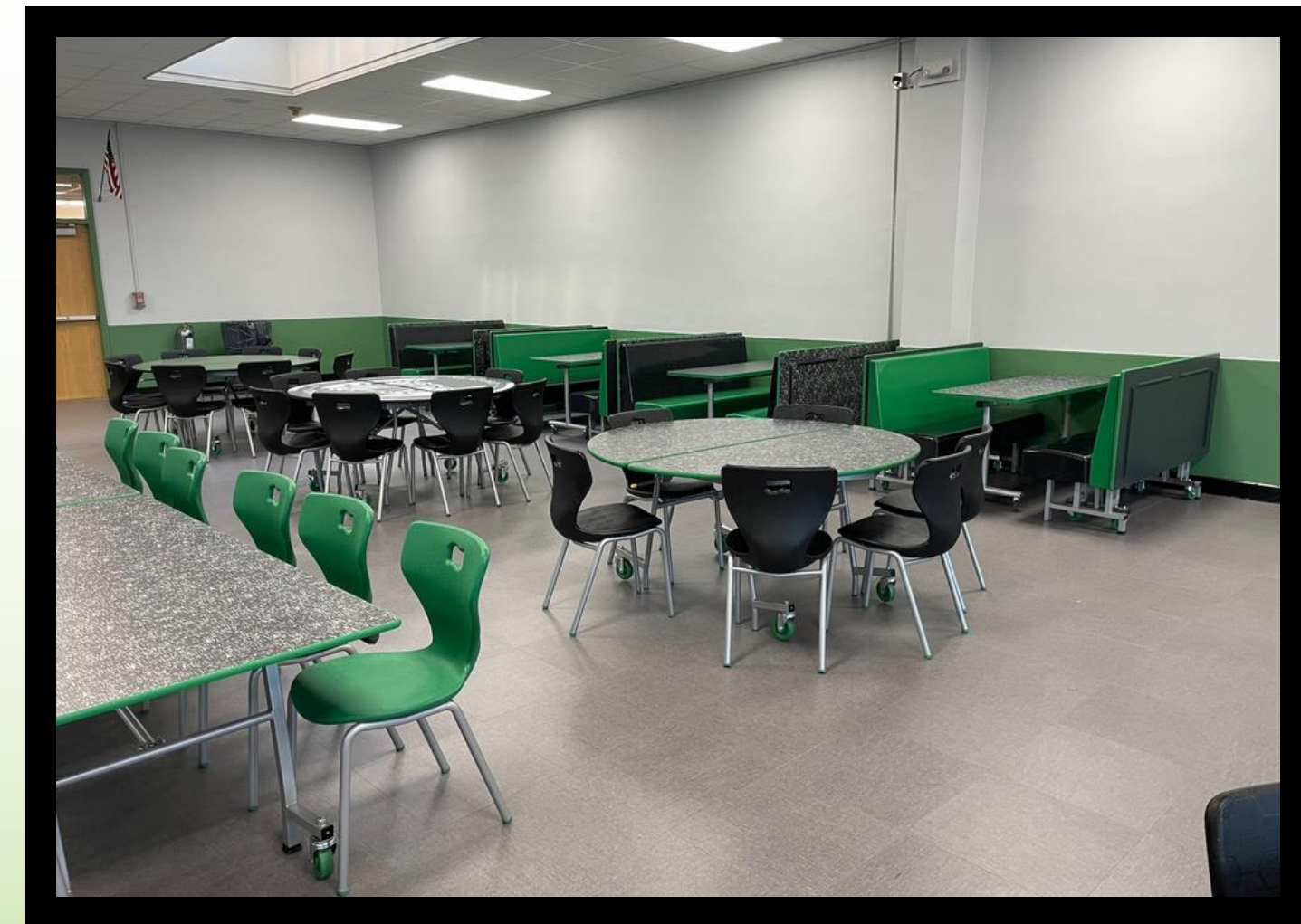
Board of Education Goal: Create a modern and competitive campus to enhance opportunities and growth for all Seaford students.



MODERNIZING AND BEAUTIFYING OUR CAMPUS-HIGH SCHOOL



Over the last year there have been numerous projects that have improved the safety and aesthetics of our buildings and grounds. The projects were funded either through the Seaford Budget or through local and state grants.



MODERNIZING AND BEAUTIFYING OUR CAMPUS - ELEMENTARY



MODERNIZING AND BEAUTIFYING OUR CAMPUS - SECONDARY





SAFETY & SECURITY REMAIN A PRIORITY

SECURITY TECHNOLOGY

RAVE APPLICATION
UPGRADE OF SECURITY
CAMERA SOFTWARE
ANONYMOUS ALERTS
CYBERSECURITY
VISITOR MANAGEMENT
SYSTEM

SECURITY HARDWARE

ELEMENTARY DOOR AJAR SYSTEM
LOCKDOWN SYSTEM WITH STROBE
LIGHTS
DIRECTIONAL SIGNAGE & SAFETY
GLASS - ALL BUILDINGS
DOOR SWIPE SYSTEM LINKED TO
LOCKDOWN
VISITOR VIDEO INTERCOM SYSTEM
SINGLE PUSH BUTTON DEADBOLT
LOCKS ON ALL CLASSROOM DOORS

SECURITY STAFFING

PARTNERSHIP WITH NCPD
& HOMELAND SECURITY
EMPLOYEE & STAFF
LANYARDS
ADDITIONAL SECURITY
GUARDS
SAFETY COMMITTEES



Anchored in Excellence: Strong Home to School Connections





Communication

Board of Education Goal: Maintain and enhance communication systems that ensure the open flow and accessibility of information with all stakeholders.



Facilitating Communication



Parent Square



New Website



Viking POPS



Districtwide Committees



Booster Club



Instagram



Department/
School
Newsletters



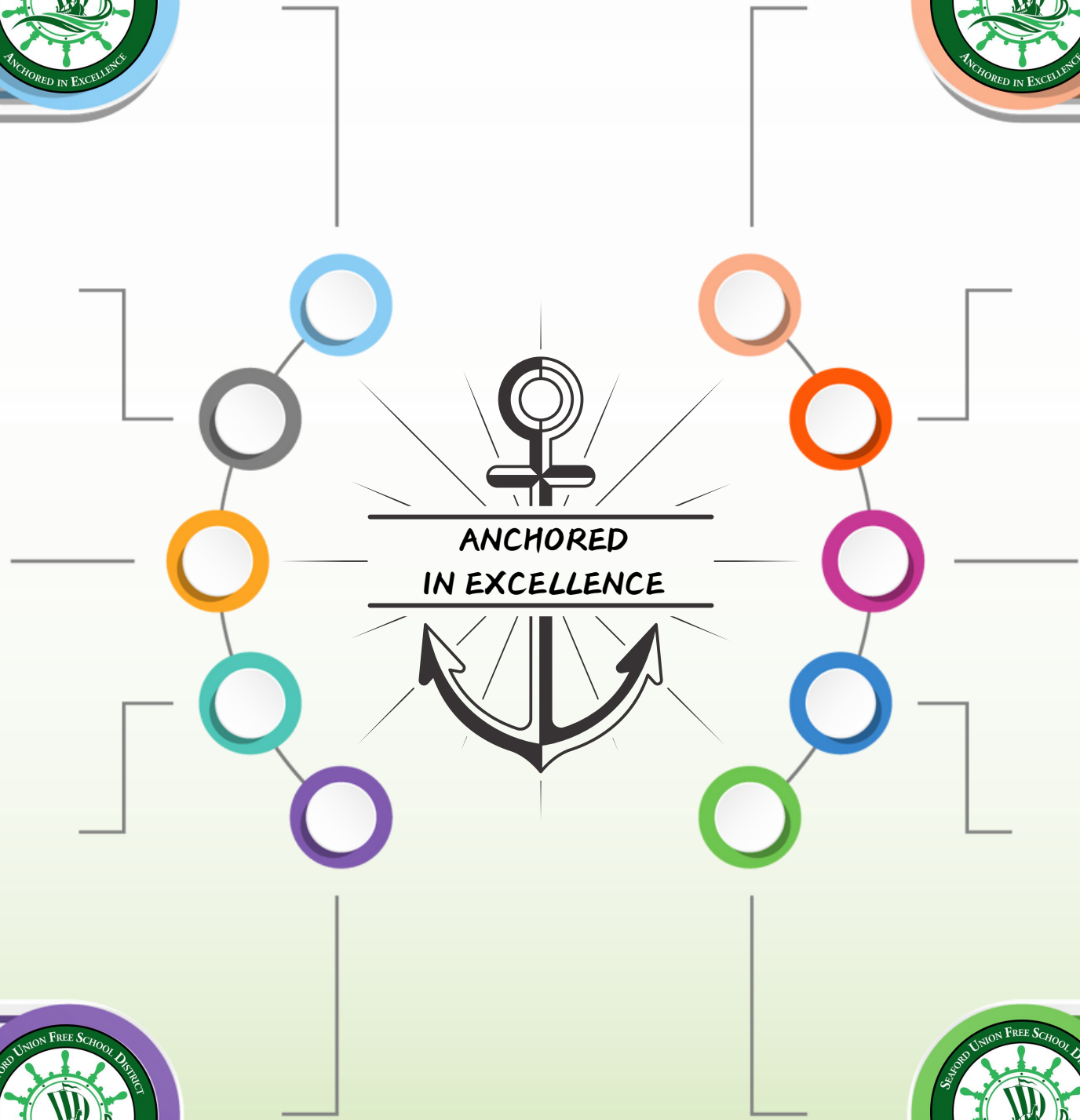
Central Office/PTA
& SEPTA Executive
Board Liaison
Meetings



Parent
Representation
on Hiring
Committees



Superintendent
PTA Presidents'
Meetings





Thank
you!

