

TSDS District Champion Network Q&A

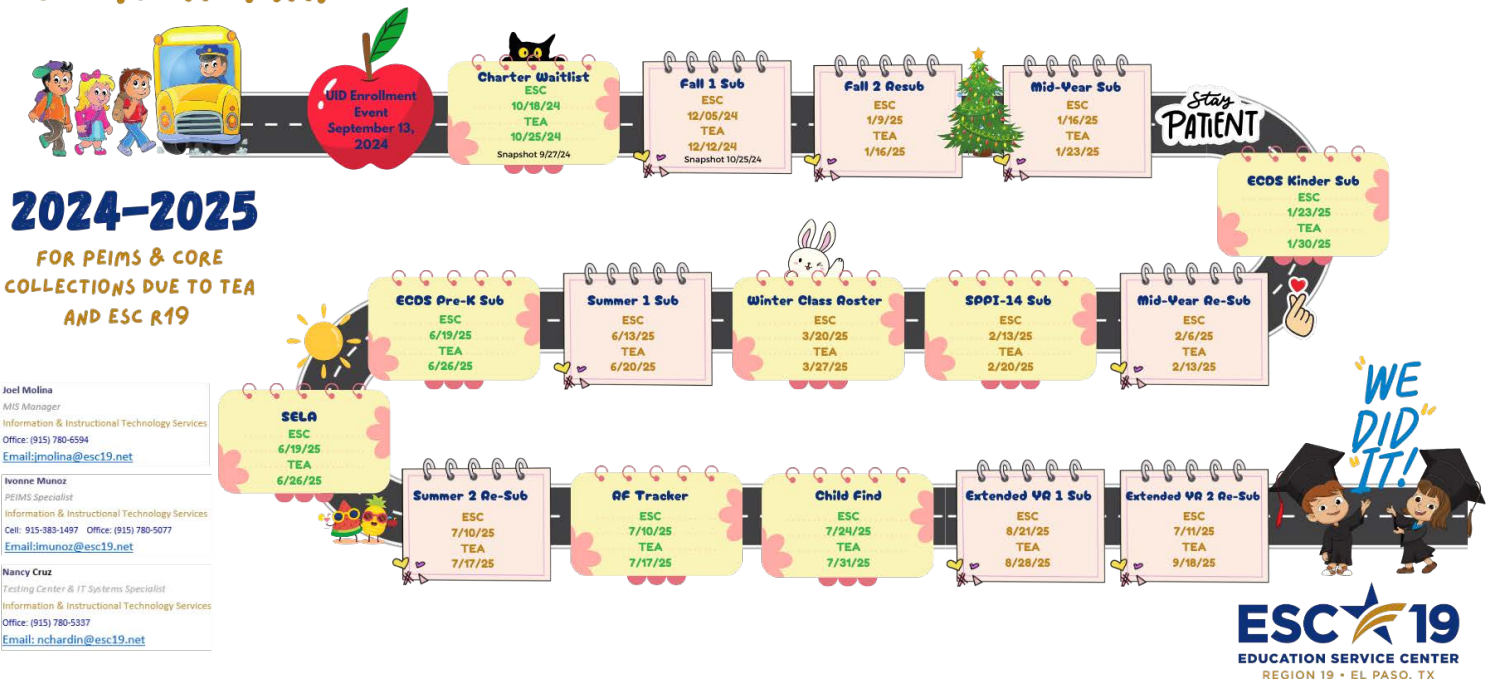
Thursday, October 24, 2024

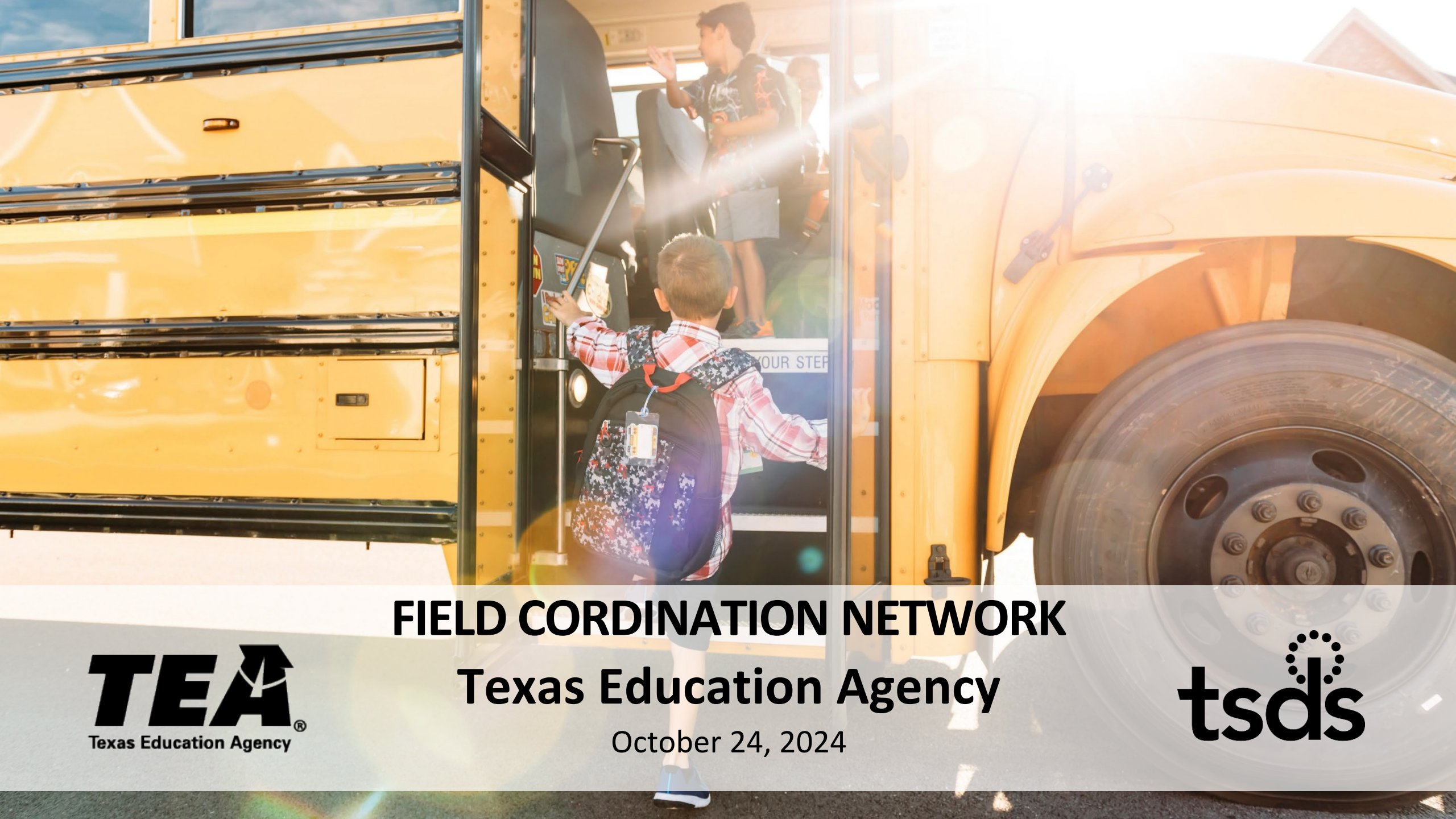
Joel Molina, Ivonne Munoz, Nancy Cruz

Agenda:

- TSDS Data Submissions
- TSDS Upgrade Project
- Demonstration - DMC
- Submission Timeline
- Upcoming Events

THE ROADMAP





FIELD COORDINATION NETWORK

Texas Education Agency

October 24, 2024





TSDS DATA SUBMISSIONS

CURRENT STATUS

■ As of: October 22, 2024



188

Total number of Charters
expected to submit for Charter
School Waitlist.

20

NOT LOADED

2

INITIATED

3

PROMOTED

64

VALIDATED

99

COMPLETED

TSDS UPGRADE PROJECT

PROJECT UPDATE AND OUTREACH INITIATIVES

RECENT DEPLOYMENT



**TSDS
UPDATE**

OCTOBER 4, 2024

TEDS 2025.2.0



TEDS 2025.2.1

For more information, view or download the [Release Notes](#) document.



TOP 3 RESOLVED ISSUES

1

The PEIMS Fall Student > Enrollment (School Association) promotion logic has been updated to promote GradeLevel for PriorYearLeaver.

2

The PEIMS Fall Student > Title 1, Part A Program promotion logic has been updated to promote for enrolled students and student leavers.

3

The PEIMS Fall Staff > Staff Basic Information promotion logic has been updated to promote a '1' where ParaprofessionalCertification is equal to 'true' and a '0' if it is not.

TOP TRENDING KNOWN ISSUES

1

The following PEIMS Fall data validation is firing for non-classroom staff where Role ID is '047' and '087': **30090-0007**

2

The following PEIMS Fall report is printing obsolete program intent codes (PIC) '32', '34', and '35': **PDM1-101-003**

3

The following PEIMS Mid-year reports are not displaying any data:
PDM2-101-002, PDM2-101-004, PDM2-101-005

TSDS TRENDING KNOWN ISSUES

■ PDM1-121-002 Special Education Students by Disability

- Issue: The report is printing 0s for all counts.
- Workaround: Use PDM1-121-001.
- Expected Resolution Date: November 8, 2024

■ RF Tracker –Student > Student Residential Facility Subcategory

- Issue: The subcategory is incorrectly promoting data for prior school years triggering fatal rules as the enter/exit dates are not within the current school year.
- Workaround: N/A
- Expected Resolution Date: November 22, 2024

■ Census Block Group Tool

- Issue: An older version is provided when trying to download from the TSDS Portal.
- Workaround: Open the current application and select to install the latest version 1.027.2.
- Expected Resolution Date: December 6, 2024

COURSE UPDATES

TEA loaded the following CourseCodes to the LEA's IODS:

CourseCodes		
SA000003	SA000004	SE000001
SE000002	SE000003	SE000004
SE000005	SE000006	SE000007
SR000001	SR000003	SR000005
SR000006	SR000007	SR000008
SR000009	SR000010	SR000011
SR000012	SR000013	SR000014

2025.2.0 CHANGE AND IMPACT

StaffEducationOrganizationAssignmentAssociation

StaffServiceSet



TEDS CHANGE: Added SPEDStudentAgeRange as required.



API IMPACT: If JSON is sent without SPEDStudentAgeRange, the API will throw error because of both StaffServiceSet and SPEDStudentRange being required.



IODS IMPACT: Upon deploying 2025.2.0 to Production, all data will be **deleted** from StaffEducationOrganizationAssignmentAssociation because it would be in an inconsistent state by not having all its required fields.

2025.2.0 CHANGE AND IMPACT

Section

SectionSet



TEDS CHANGE: Added SPEDStudentAgeRange as required.



API IMPACT: When submitting the optional SectionSet, the API will throw an error if SPEDStudentAgeRange is not included.



IODS IMPACT: Upon deploying 2025.2.0 to Production, only the SectionSet will be **deleted** from this entity.

2025.2.0 CHANGE AND IMPACT

PriorYearLeaver



TEDS CHANGE: Renamed LanguageInstructionProgramService to LangInstruProgramSvc.



API IMPACT: None. If the data is sent with the old name, the API will ignore it quietly. This may give an impression the data was successfully sent.



IODS IMPACT: Upon deploying 2025.2.0 to Production, any previous LanguageInstructionProgramService data will be deleted. **The data must be reloaded to the IODS using the LangInstruProgramSvc.**

2025.2.1 CHANGE AND IMPACT

StaffEducationOrganizationEmploymentAssociation

DaysEmployedSet



TEDS CHANGE: On 2025.2.0, data elements PercentDayEmployed and NumberDaysEmployed moved to new CommonType DaysEmployedSet. On 2025.2.1, DaysEmployedSet may have multiple instances and is required.



API IMPACT: If PercentDayEmployed and NumberDaysEmployed are not sent in the new Common Type, the API will throw an error.



IODS IMPACT: Upon deploying 2025.2.1 to Production, the entire entity will be deleted. Vendors must reload the data with new DaysEmployedSet as a collection for StaffEducationOrganizationEmploymentAssociation.

2025.2.1 CHANGE AND IMPACT

Staff

ParaprofessionalCertificationSet



TEDS CHANGE: Added may have multiple instances.



API IMPACT: ParaprofessionalCertificationSet will now appear as ParaprofessionalCertificationSets in JSON. Data sent to it as single item (not in array) will throw error. Data sent to ParaprofessionalCertificationSet will be quietly ignored.



IODS IMPACT: Upon deploying 2025.2.1 to Production, the ParaprofessionalCertificationSet will be deleted. Vendors must reload Staff for those records that need to have the ParaprofessionalCertificationSet.

TSDS PEIMS FALL REPORTS

- PEIMS Fall Submission Completion/SOA changes:
 - TEA will require the PEIMS Data Approver to review the new report, Percentage of Change from Prior Year: Student Demographics, Characteristic and Programs (PDM1-231-002) before approving the PEIMS Fall Submission.
 - The 'Confirm' button will be available once the PEIMS Data Approver has clicked on the link and reviewed the report.
- PDM1-231-002: New PEIMS Fall Report
 - Percentage of Change from Prior Year: Student Demographics, Characteristics and Programs
 - The report can be run from the Special Reports section, District Level QA subsection.

TSDS PEIMS FALL REPORTS

Email Notification Text

SUBJECT: Learning ISD; PEIMS Fall Submission Data: COMPLETE

ATTACHMENTS:

PDM1-231-002: Percentage of Change from Prior Year: Student Demographic, Characteristic, & Program

BODY:

Dear **Dr. Superintendent**

The District PEIMS Coordinator has marked the Learning ISD 2024-2025 PEIMS Fall Submission as "**COMPLETE**."

The submission will now go to the Superintendent for approval and the ESC for acceptance. The submission is now locked and cannot be changed, unless the ESC rejects the collection.

The following report(s) have been automatically generated for your organization and attached to this email. **The Superintendent is required to review the attached report and verify its contents before approving the PEIMS Fall submission as "COMPLETE":**

PDM1-231-002: Percentage of Change from Prior Year: Student Demographic, Characteristic, & Program

This notification was sent to the following roles: Data Approver

Regards,

The TSDS PEIMS System

REMINDER: If you need TSDS PEIMS customer support, create an incident in the TIMS system using the Support link in the PEIMS header.

TSDS PEIMS FALL REPORTS

- New PEIMS Fall Report:
 - Percentage of Change from Prior Year: Student Demographics, Characteristic and Programs (PDM1-231-002)
 - Lists student counts for prior year, current year, and percent of change
 - Aggregated by LEA or Campus
 - Select all campuses or by individual campus
 - Select Programs
 - Sorting by Campus, Program, or Percentage Increase/Decrease
 - Summary Section with Enrollment, Graduate and All Other Leaver Counts
 - PDF or CSV option

TSDS PEIMS FALL REPORTS

- New PEIMS Fall Report:

- List of Student Demographics, Characteristic and Programs

ADA Eligibility	Gifted and Talented	Post-Sec Cert Lic Result
Associate Degree	Grade Level	Primary Disability
At Risk	Homeless	Race
Attribution Code	IEP Continuer	Secondary Disability
Bilingual	Immigrant	Section 504
Dyslexia	Migratory	Sex
Economic Disadvantage	Military Connected	Special Education
Emergent Bilingual	Parental Permission	Tertiary Disability
ESL	PK Eligible Prior Year	Title I, Part A
Ethnicity	PK Program Code	Unschooled Asylee Refugee
Foster Care	Post-Sec Cert Lic Code	

Home» Prepare/Finalize Submission » **SOA PDF Download**

You are required to review and verify the following report before approving this submission:

- [PDM<#>-231-002 - Percentage of Change from Prior Year: Student Demographic, Characteristic, & Program](#)

Confirm

Cancel

Version 3.0.0

Public Education Information Management System (PEIMS)

STATEMENT OF APPROVAL OF PEIMS DATA COLLECTION AND VALIDATION ERRORS

for

The Texas Education Agency

Organization Name: <LEA Name>

Organization Number: <Org ID>

This is to affirm that the organization has submitted all required data, and that the undersigned has taken measures to verify the accuracy and the authenticity of the data being submitted for this LEA's PEIMS <YYYY-YYYY> <Submission Name> Collection, <First Submission / Resubmission>.

Further, this is to confirm that the data presented in the PEIMS summary reports, including the report below and all warning messages in the validation error listing, have been verified for accuracy.

- [PDM<#>-231-002 - Percentage of Change from Prior Year: Student Demographic, Characteristic, & Program](#)

**<User Name>
Superintendent, <LEA NAME>**

NOTES AND INSTRUCTIONS: This form was electronically signed on <Month DD, YYYY at HH:MM AM/PM> CST. The approval of the PEIMS <YYYY-YYYY> <Submission Name> Collection, <First Submission / Resubmission> was based on a review of the summary reports and the final fatal-free validations.

This form will be emailed to the LEA Superintendent, as well as the ESC and LEA PEIMS Coordinators, and should be retained. A copy of this form will also be stored on a secured TEA server and retained indefinitely.

TSDS PEIMS FALL REPORTS

Texas Education Agency

PDM1-231-002

vnn.n.n

TSDS PEIMS PERCENTAGE OF CHANGE FROM PRIOR YEAR: STUDENT DEMOGRAPHICS, CHARACTERISTICS & PROGRAMS

LEA-level Data | All Programs | Programs - Alphabetically in Ascending Order

Campuses: All Campuses

2024-2025 FALL Collection

Monday 12/9/2024 2:41PM

Page n of n

LEA: nnnnnn - DistrictName1

Summary

<u>Student Status</u>	<u>Previous Year</u>	<u>Current Year</u>	<u>% Change</u>	<u>Compared to Prev Year</u>
Enrollment	2605	2536	-3%	Decrease
Graduates	1649	1714	4%	Increase
All Other Leavers	693	385	-44%	Decrease

Economic Disadvantage

<u>Program Indicator</u>	<u>Previous Year</u>	<u>Current Year</u>	<u>% Change</u>	<u>Compared to Prev Year</u>
00-Did Not Qualify As Economically Disadvantaged	5	5	0%	No Change
01-Eligible For Free Meals	472	426	-10%	Decrease
02-Eligible for Reduced-Price Meals	40	65	63%	Increase
99-Other Economic Disadvantage	76	83	9%	Increase

Immigrant

<u>Program Indicator</u>	<u>Previous Year</u>	<u>Current Year</u>	<u>% Change</u>	<u>Compared to Prev Year</u>
Immigrant			***No Data to Report***	

Migratory

<u>Program Indicator</u>	<u>Previous Year</u>	<u>Current Year</u>	<u>% Change</u>	<u>Compared to Prev Year</u>
Migratory	75	75	0%	No Change

Note: The summary section of this report reflects all students of the organization. All other programs include only students enrolled with As of Status codes of "B", "D", "F" or "X".

TSDS PEIMS FALL REPORTS

Existing PEIMS Fall Report: Student Indicator by Grade

Texas Education Agency

PDM1-120-012

vnn.n.n

*** CONFIDENTIAL ***

LEA: nnnnnn - DistrictName1

TSDS PEIMS STUDENT INDICATOR REPORT BY GRADE

Parameters

2021-2022 Fall Collection

Monday 3/07/2022 2:41PM

Page n of n

Grade: aa

Student Name	Unique ID	Local ID	Student ID	Sex	Ethnicity	Date of Birth	ADA	Economically Disadvantaged	Title 1	Migratory	Immigrant	Emergent Biling	Bilingual	ESL	Alt Lang	Special Education	IEP Continuer	Home Language	Student Language	Parental Permission	Gifted & Talented	At Risk	Homeless	Unaccompanied Youth	Dyslexia Ind	Intervention Strategy	Section 504	Adult Prev Attend	Par Req Reten
Lname GenCode, First MName1	nnnnnnnn	nnnnnnnn	nnn-nn-nnnn	M	A	mm/dd/yyyy	n	nn	n	n	n	n	n	n	nn	n		nn	aa	n	n		n		n	n			
Lname GenCode, First MName2	nnnnnnnn		nnn-nn-nnnn	M	A	mm/dd/yyyy	n	nn	n	n			n	n	nn	n	n	nn	aa	n	n	n	n		n	n		n	
Lname GenCode, First MName3	nnnnnnnn	nnnnnnnn	nnn-nn-nnnn	M	A	mm/dd/yyyy		nn	n	n	n	n	n	n	nn	n	n	nn	aa		n		n	n	n	n	n		
Lname GenCode, First MName4	nnnnnnnn	nnnnnnnn	nnn-nn-nnnn	M	A	mm/dd/yyyy	n	nn	n	n			n	n	nn	n				n	n	n	n		n	n	n	n	
Lname GenCode, First MName5	nnnnnnnn	nnnnnnnn	nnn-nn-nnnn	M	A	mm/dd/yyyy		nn	n	n	n	n	n	n	nn	n	n	nn	aa		n		n	n	n	n	n		

Student Indicator Totals for Grade nn

ADA	Eco Dis	Ttl 1	Mig	Imm	Emergent Biling	Bil	ESL	Alt Lang	Sp Ed	IEP Cont	Home Lang	Student Lang	Par Perm	GT	At Risk	Homeless	Unacc Youth	Dysl Ind	Intervention Strategy	Section 504	Adult Prev Attend	Par Req Reten
nn,nnn	nn,nnn	nn,nnn	nn,nnn	nn,nnn	nn,nnn	nn,nnn	nn,nnn	nn,nnn	nn,nnn	nn,nnn	nn,nnn	nn,nnn	nn,nnn	nn,nnn	nn,nnn	nn,nnn	nn,nnn	nn,nnn	nn,nnn	nn,nnn	nn,nnn	nn,nnn

Total Students for Grade nn:

nn,nnn

PEIMS FALL REPORTS

- **October 16, 2024:** Updated the following to include a CSV version:
 - PDM1-120-003 Student Program Roster
 - PDM1-120-007 Unreported Students Presumed At Risk
 - PDM1-124-006 Non-Dropout Non-Graduate Leaver Roster

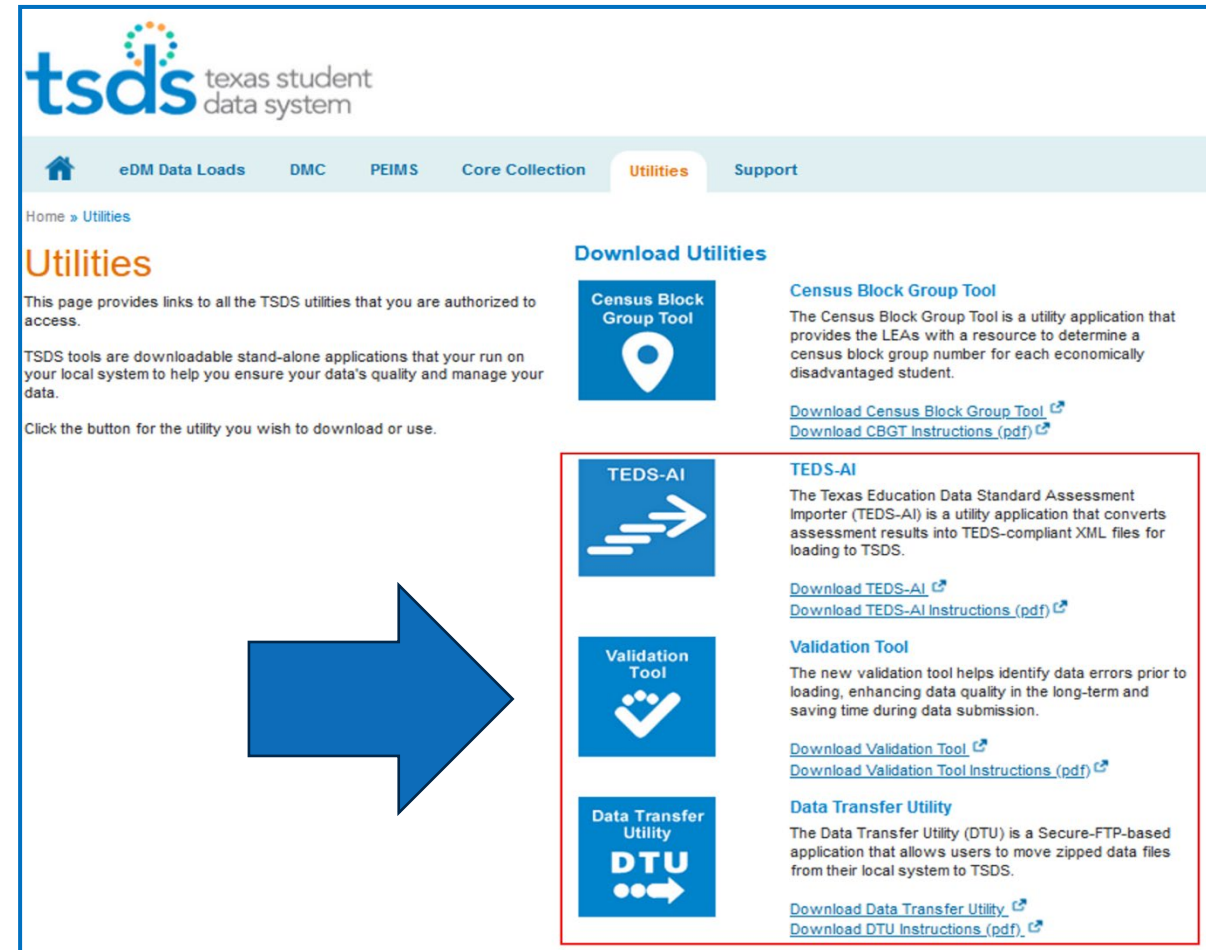
- **October 23, 2024:** these reports will be updated to include a CSV version:
 - PDM1-120-013 PK Student Roster
 - PDM1-121-006 Special Education Roster by Grade
 - PDM1-124-004 School Leaver Roster

TEA will continue to add the CSV version to additional reports in future releases.

TSDS UTILITIES SUNSET NOTICE

- The following TSDS Utilities Application downloadable tools are tentatively scheduled to be sunset on **Friday, November 29, 2024**.

- TEDS-AI – Assessment Importer
- Validation Tool
- Data Transfer Utility



The screenshot shows the TSDS (Texas Student Data System) Utilities page. The page header includes the TSDS logo and navigation links: Home, eDM Data Loads, DMC, PEIMS, Core Collection, Utilities (selected), and Support. The main content area is titled "Utilities" and provides links to download various tools. A large blue arrow points from the text on the left to a red-bordered box that highlights the following tools:

- TEDS-AI**: The Texas Education Data Standard Assessment Importer (TEDS-AI) is a utility application that converts assessment results into TEDS-compliant XML files for loading to TSDS.
[Download TEDS-AI](#)
[Download TEDS-AI Instructions \(pdf\)](#)
- Validation Tool**: The new validation tool helps identify data errors prior to loading, enhancing data quality in the long-term and saving time during data submission.
[Download Validation Tool](#)
[Download Validation Tool Instructions \(pdf\)](#)
- Data Transfer Utility**: The Data Transfer Utility (DTU) is a Secure-FTP-based application that allows users to move zipped data files from their local system to TSDS.
[Download Data Transfer Utility](#)
[Download DTU Instructions \(pdf\)](#)

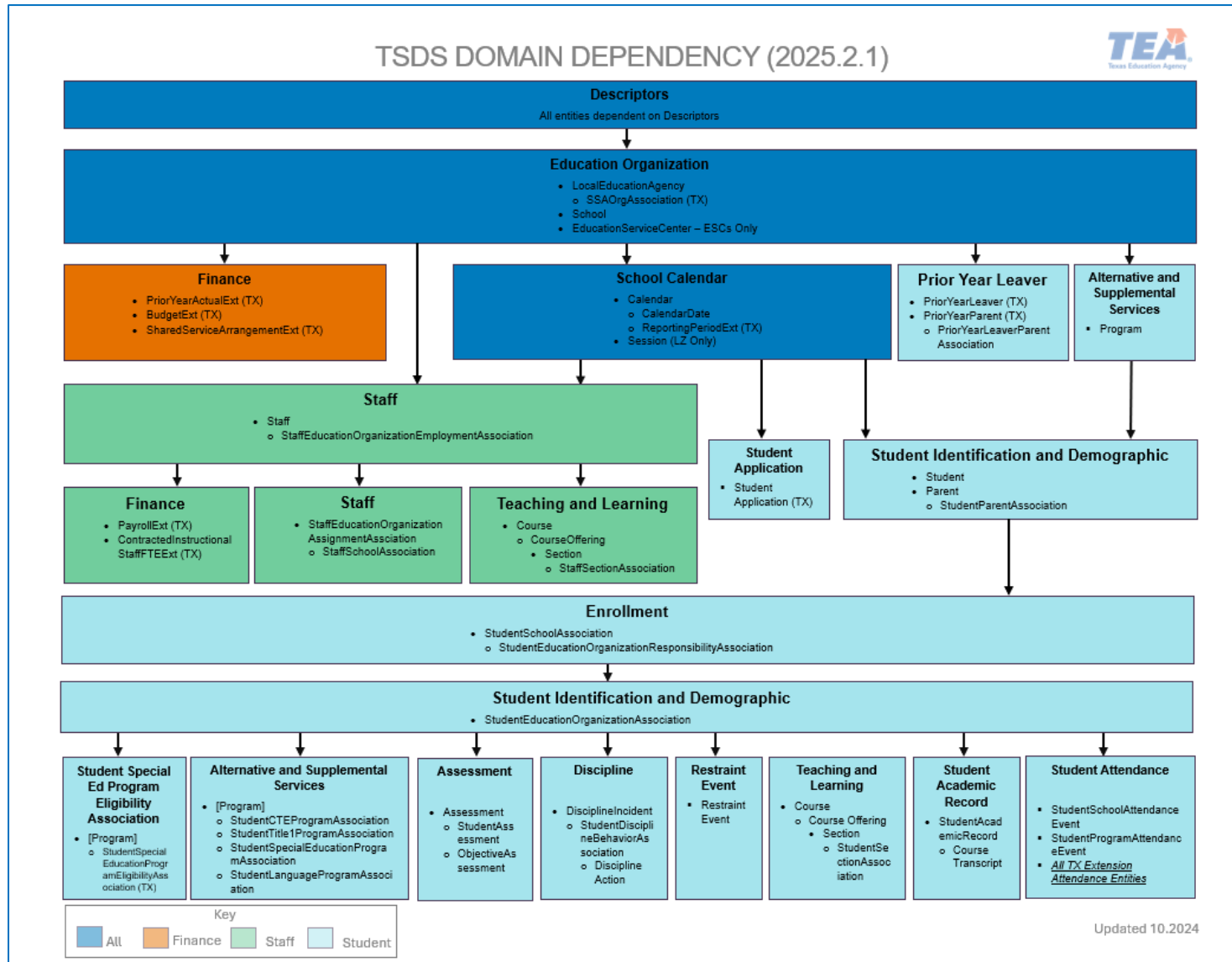
- 2024-2025 School Year Changes to the TREx Data Standards Version 5.7 will include:
 - Revising code 12 in the PERFORMANCE-ACKNOWLEDGEMENT-COLLEGE-READINESS-ASSESSMENTS (TC38) Code Table.

Table ID	Name	XML Name	Simple Type & Record	Date Issued	Date Updated
TC38	PERFORMANCE ACKNOWLEDGMENT COLLEGE READINESS ASSESSMENTS	CollegeAssess Code	PerfAckCollege AssessCode		7/1/2023
Code	Translation				
10	Acknowledgment for ACT Pre-ACT: earning a composite score of 29 on the ACT PreACT examination				
12	Acknowledgment for ACT: earning a composite score of 29 on the ACT PreACT examination (excluding writing)				

UPCOMING DMC FUNCTIONALITY

- IODS data export coming soon to DMC!
- Data will be extracted from the IODS overnight and made available via CSV files for download.
- Only the following entities will be available initially:
 - PriorYearLeaver
 - PriorYearLeaverParent
 - Student
 - StudentApplication
 - StudentEducationOrganizationAssociation
 - StudentSchoolAssociation
 - Staff
 - StaffEducationOrganizationAssignmentAssociation
 - StaffEducationOrganizationEmploymentAssociation
- Tentatively scheduled for release on November 8, 2024.
 - TEA will demo during the FCN webinar scheduled on November 5, 2024.

DOMAIN DEPENDENCY DOCUMENT



- Updated – October 2024
- Moved Prior Year Leaver
- [Download from Website on Resources Page](#)
- Domain Dependency By Submission is coming soon to a Knowledge Base Article

Demonstration

Data Management Center

TSDS PEIMS ready for users to complete, approve, and accept submissions	October 28, 2024
SPPI-14 ready for users to complete	October 28, 2024
ECDS Kindergarten ready for users to complete	November 11, 2024
PEIMS Fall First Submission due date for LEAs to ESCR19	December 5, 2024

Submission Timeline

EXCITING NEWS!

TEALearn is now offering the TEA 2024-2025 Student Discipline – Chapter 37 Training as a self-paced online course. This online training provides the same comprehensive information previously available in-person and virtually, led by Mary Scott. Along with the new model of training, office hours will be available for conversations, questions, and discussions each month with the student discipline specialist (more information regarding office hours coming soon)!

Important Details:

- Account Required: Anyone who hasn't created a TEALearn account, will need to do so before enrolling into the training.
- Access the Training: Links to register for the training can be found by searching on <https://link.edgepilot.com/s/7503a0c8/Mr9tbeuEs0O6e9bp5AaC8A?u=https://register.tealearn.com/> or at [TEA 2024-2025 Student Discipline – Chapter 37 Training](#)
- Certificate of Completion: After finishing the course and a short quiz, you'll receive a certificate of completion. Keep this certificate if you plan to attend Student Discipline Office Hours.
- Scheduled Weekly Office Hours will be available beginning November 1, 2024.

This information should be available on the student discipline webpage within the next 24 hours. Please feel free to send it out to all your administrators who deal with discipline and who do not. At this time, PEIMS training is not available, but PEIMS coordinators may enroll and take the admin training if they wish.

Student Discipline Professional Development



QUESTIONS

OPEN DISCUSSION