



TSDS Upgrade Project

TEDS Overview

LEARNING OBJECTIVES

By the end of this course, the learner will be able to explain:

- What the Ed-Fi Data Standard is and how the Texas Education Data Standards (TEDS) are a subset of them.
- Why TEA is updating TEDS to be consistent with the Ed-Fi Data Standard version 4.
- How information about a student's participation in a program and/or service will be reported differently in the TSDS Upgrade Project.
- How to navigate through the TEDS documentation.

WHY IS THIS COURSE IMPORTANT

- To provide an overview of the key changes to Texas Education Data Standards (TEDS) as a result of the TSDS Upgrade Project.
- Goal is to ensure that you can effectively understand and teach these key changes and effectively support any LEAs participating in the 2023-2024 Parallel Submission Year.

COURSE AGENDA

GETTING STARTED

Ed-Fi Data Standard, TEDS, & Parallel Year

Key Concepts

Changes, Student Characteristics, & Navigation

Knowledge Check

Training Activity

WRAP-UP

Key Takeaways, Resources, and Next Steps



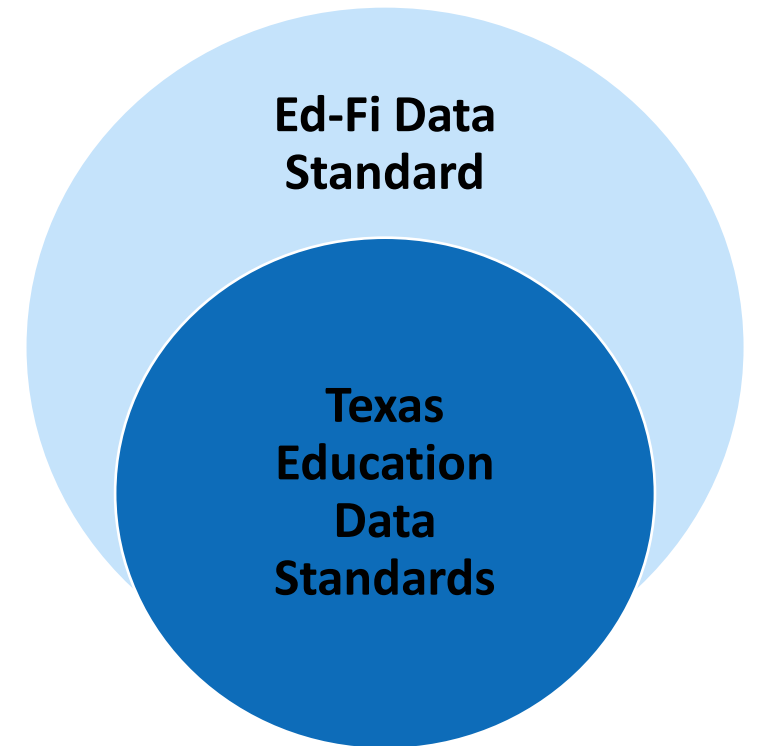


GETTING STARTED

Ed-Fi Data Standard, TEDS, & Parallel Year

WHAT IS TEDS?

- The **Ed-Fi Data Standard** is the set of rules for the collection, management, and organization of educational data that allows multiple systems to share their information in a seamless, actionable way.
 - TEDS is a **subset** of the Ed-Fi data standard.
- Refer to the [Operation Data Store \(ODS\) Upgrade Texas Education Data Standards](#) for detailed documentation.



WHY TEDS IS BEING UPDATED?

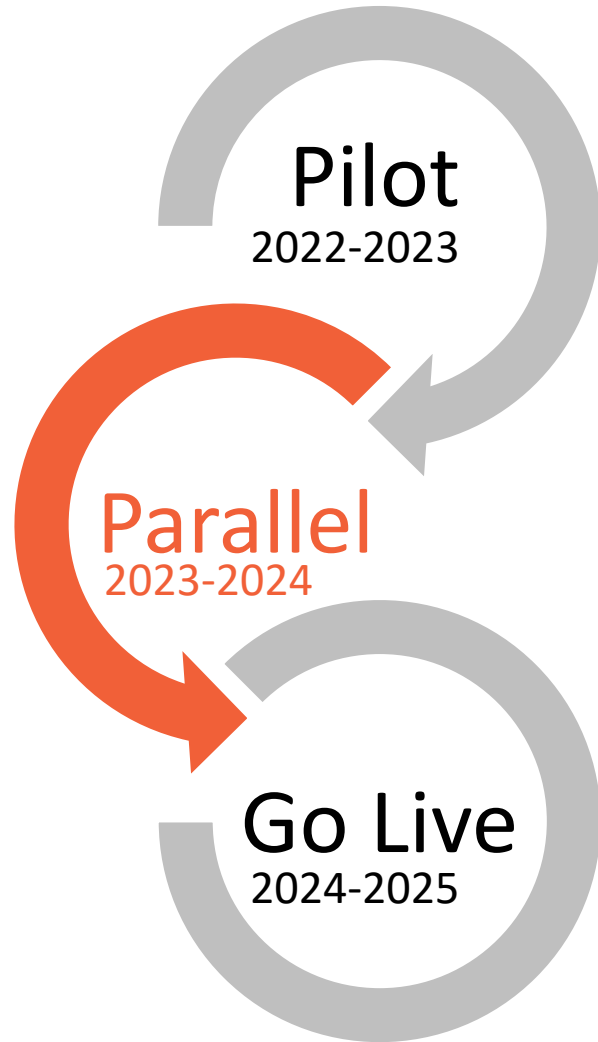
TSDS is **three major versions behind** the current version of the Ed-Fi standard.

Most new TSDS data collections require **TEA extensions** for implementation.

Would allow for **better alignment** for vendors with Ed-Fi based products.



HOW WILL TEDS BE USED IN PARALLEL?

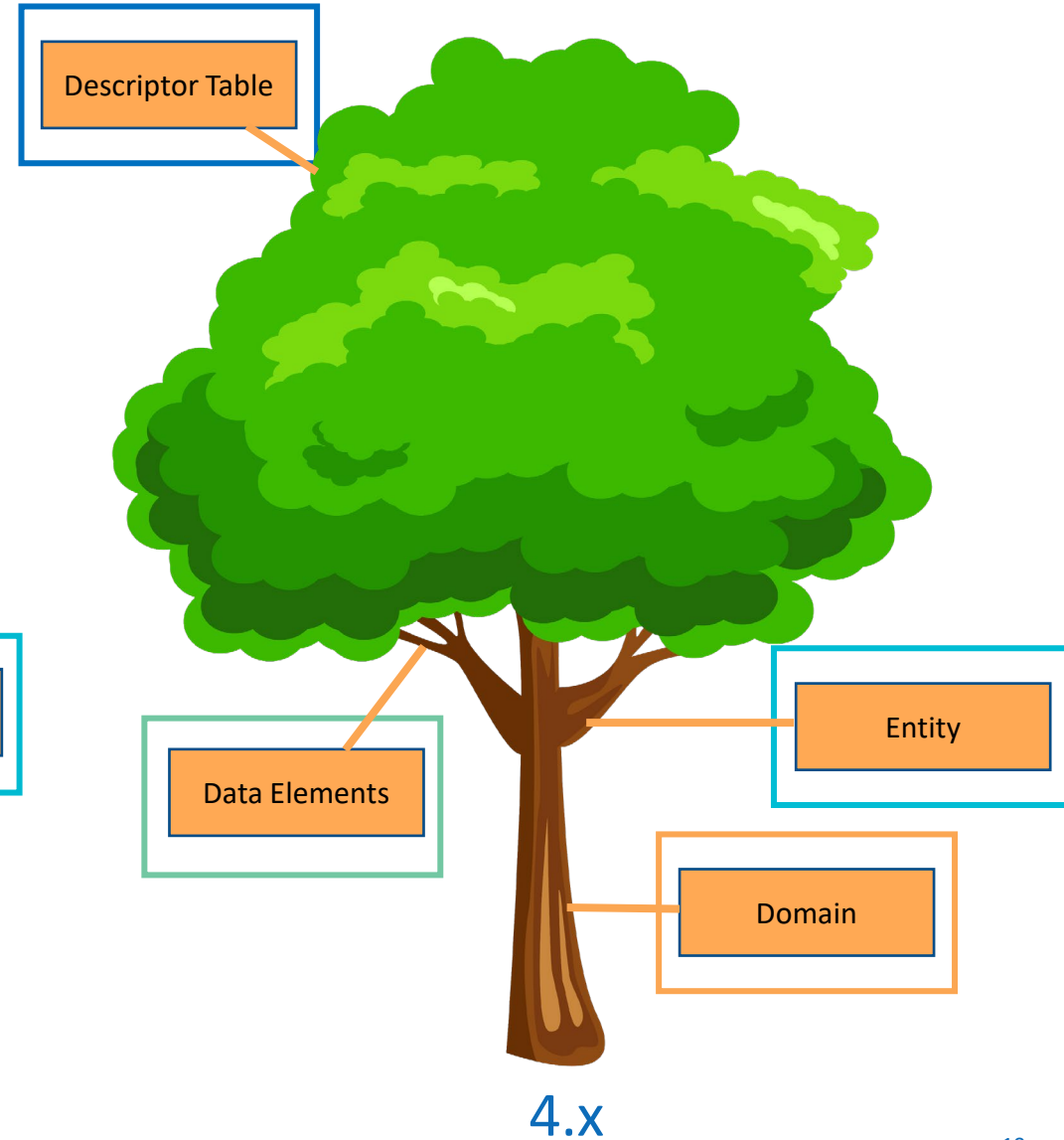
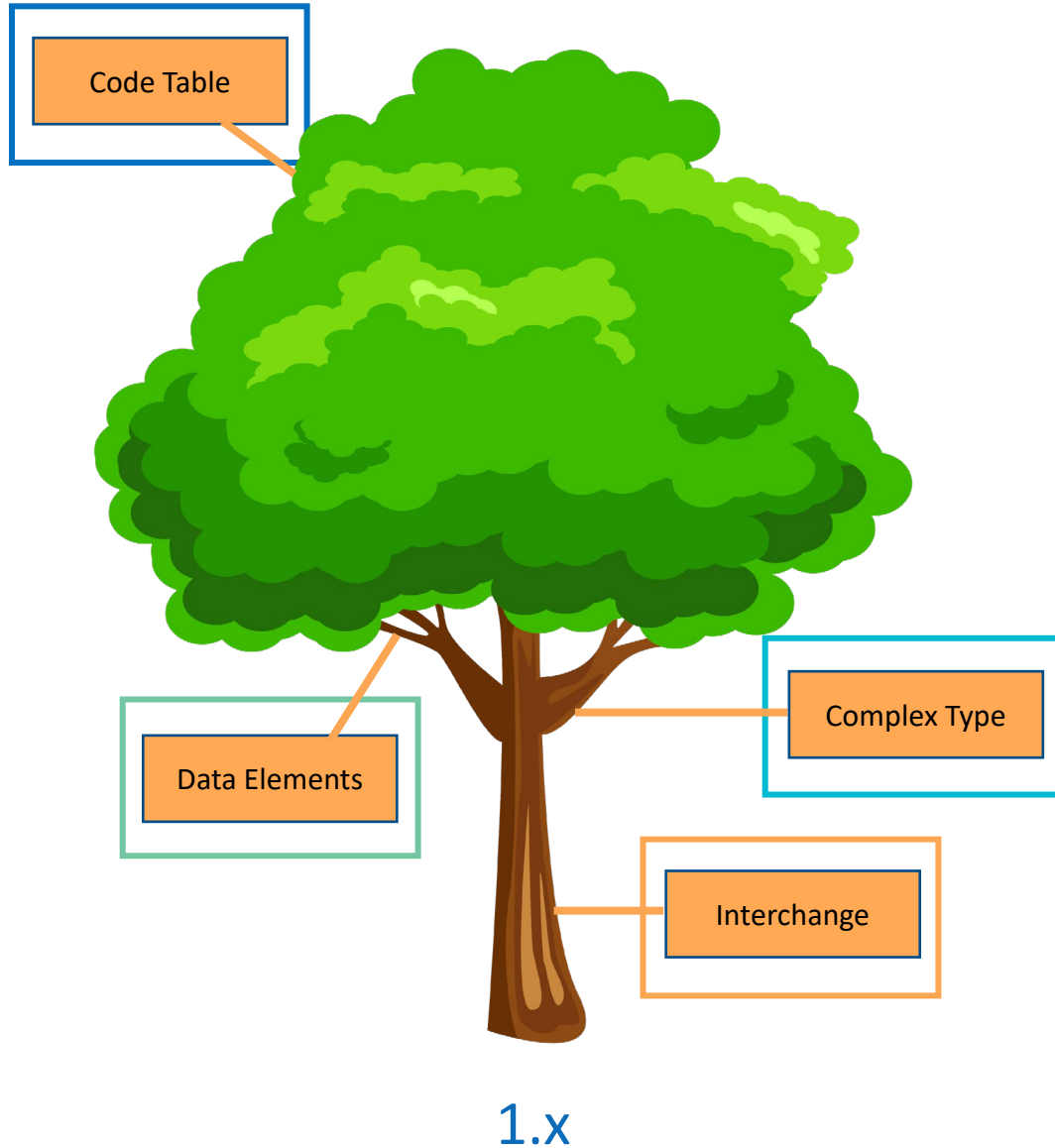




KEY CONCEPTS

Changes, Student Characteristics, & Navigation

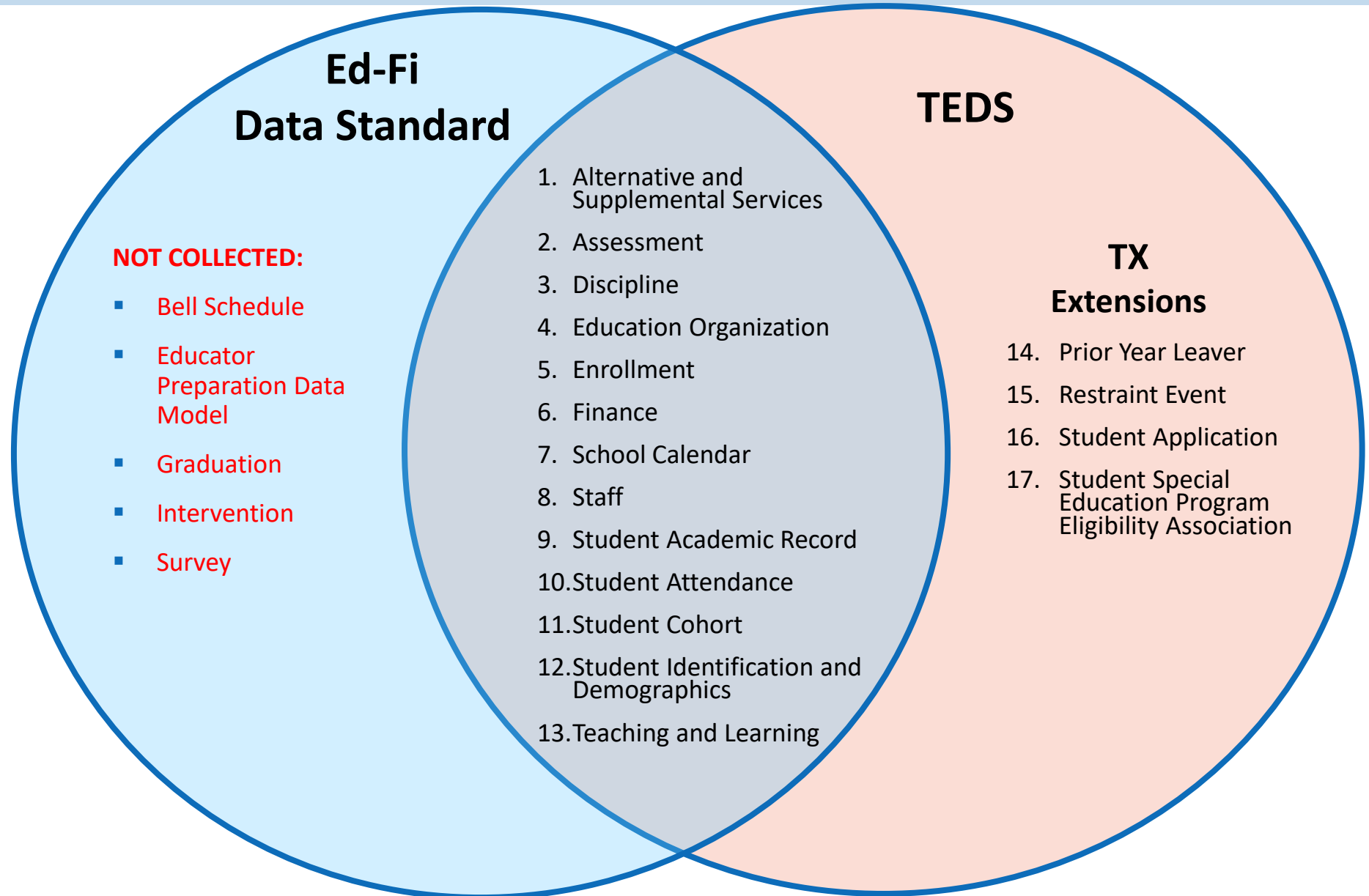
TERMINOLOGY CHANGES FOR 4.X



TSDS DOMAINS

1. Alternative and Supplemental Services
2. Assessment
3. Discipline
4. Education Organization
5. Enrollment
6. Finance
7. Prior Year Leaver (TX)
8. Restraint Event (TX)
9. School Calendar
10. Staff
11. Student Academic Record
12. Student Application (TX)
13. Student Attendance
14. Student Cohort
15. Student Identification and Demographics
16. Student Special Education Program Eligibility Association (TX)
17. Teaching and Learning

ED-FI CORE AND TEXAS EXTENSIONS



DOMAIN DOCUMENT

- What you can expect to see in the domain document:

EducationServiceCenter					
EducationOrganizationCategory <i>(may have multiple instances)</i>	E3019	EducationOrganiz ationCategory			01/12/2023
NameOfInstitution	E3037	String	75		
EducationServiceCenterId	E1091	Number	6		
StateEducationAgency	Not Collected				
SSAOrgAssociationExt (TX)					
EducationOrganization	CETX	Reference	6		
SSAType	TX	E0776	SSAType	2	
FiscalAgentDistrictId	TX	E0777	Number	6	

New Data Element	Not Collected – Ed-Fi data element NOT collected by TEA.
Reference – data element is loaded by one entity and used by another entity.	Landing Zone – Ed-Fi required data element not used by TEA but required in the API.
TX- Texas-extended data element.	CETX – Ed-Fi data element used by TEA in a different location.
(TX) – Texas-extended entity	(may have multiple instances) – more than one data element, entity, or common type can be reported. (currently known as “unbounded.”)

TEDS DATA ELEMENT CHANGES

NO CHANGE

- FIRST-NAME
 - 1.x: FIRST-NAME (E0703)
 - 4.x: FirstName (E0703)
 - Same Data Element ID, Name and Definition

SIGNIFICANT CHANGE

- Student Characteristic
 - 1.x: 20+ data elements about student characteristics
 - E.g., At Risk (E0919), Immigrant (E0797) Migrant (E0984), Dyslexia (E1530), etc.
 - 4.x: 1 data element
 - StudentCharacteristic (E3063) - NEW

SIMPLE CHANGE

- DISCIPLINARY-ACTION-REASON-CODE
 - 1.x: DISCIPLINARY-ACTION-REASON-CODE (E1006)
 - 4.x: Behavior (E1006)
 - Same data element definition using the same code/descriptor table, but different name of the data element.

NEW DATA ELEMENTS

- Effective Dating
 - 4.x: Begin & End Dates will be required to be reported with most data elements.
 - E.g., EconomicDisadvantage (E0785)
 - BeginDate (E3010)
 - EndDate (E3020)

TEDS DESCRIPTOR CHANGES

NO CHANGE

- PK-CURRICULA-CODE
 - 1.x: PK-CURRICULA-CODE (C206)
 - 4.x: PKCURRICULA (C206)
 - Same descriptor table and name

SIGNIFICANT CHANGE

- PARTICIPATION-INDICATOR-CODE (C088)
 - 1.x: PARTICIPATION-INDICATOR-CODE (C088)
 - E.g., 0-No, 1-Yes
 - 4.x: StudentCharacteristic (C344) (NEW)
 - E.g., 01 – At Risk, 02 – Immigrant, 03 – Migrant, 04 – Dyslexia, etc.
 - Moved 20+ data elements about student characteristics into the new C334 descriptor table

SIMPLE CHANGE

- POPULATION-SERVED-CODE
 - 1.x: POPULATION-SERVED-CODE (C030) & POPULATION-SERVED-CODE (DC091)
 - 4.x: PopulationServed (C030)
 - Merged PEIMS and TSDS Code tables into one descriptor table.

NEW DESCRIPTOR TABLE

- TRUANCY
 - 1.x: E1657, E1658 & E1659
 - 4.x: Truancy (C346) (NEW)
 - 01 – Excessive Unexcused Absences
 - 02 – Truancy Prevention Measures
 - 03 – Truancy Complaint Filed
 - Merged the three data elements on truancy into the new C346 descriptor table



STUDENT CHARACTERISTICS

Walkthrough

STUDENT CHARACTERISTICS

Element ID	Ed-Fi 1.0 Data Element Name	Element ID	Ed-Fi 4.x Data Element Name
E0919	AT-RISK-INDICATOR-CODE	1 Data Element	E3063 StudentCharacteristic
E0797	IMMIGRANT-INDICATOR-CODE		
E0984	MIGRANT-INDICATOR-CODE		
E1530	DYSLEXIA-INDICATOR-CODE		
E1559	T-STEM-INDICATOR-CODE		
E1560	ECHS-INDICATOR-CODE		
E1612	P-TECH-INDICATOR-CODE		
E1647	NEW-TECH-INDICATOR-CODE		
E1564	IEP-CONTINUER-INDICATOR-CODE		
E1601	STAR-OF-TEXAS-INDICATOR-CODE		
E1649	PK-ELIGIBLE-PREVIOUS-YEAR-INDICATOR-CODE		
E1603	SECTION-504-INDICATOR-CODE		
E1602	INTERVENTION-STRATEGY-INDICATOR-CODE		
E1432	PREGNANCY-RELATED-SERVICES		
E0034	GIFTED-TALENTED-INDICATOR-CODE		
E1660	ADULT-PREVIOUS-ATTENDANCE-INDICATOR-CODE		
E1730	GENERAL-EDUCATION-HOMEBOUND-INDICATOR		
E1729	PARENT-REQUEST-RETENTION-INDICATOR		
E1028	BILINGUAL/ESL-SUMMER-SCHOOL-INDICATOR-CODE		
E1672	ADDITIONAL-DAYS-PROGRAM-PARTICIPATION-INDICATOR-CODE		
E1735	VIRTUAL-STUDENT-NOT-IN-MEMBERSHIP		

20+ Data Elements

DATA ELEMENT DEFINITION

Data Element ID	Data Element Name	Date Issued	Date Updated
E3063	StudentCharacteristic	11/01/2021	03/01/2023
Definition			
StudentCharacteristic captures important characteristics of the student’s environment or situation.			
Special Instructions			
Table Identification	Length	Data Type	Domain of Values
StudentCharacteristic (C344)		Descriptor	
Used in Entity			
StudentEducationOrganizationAssociation.StudentCharacteristic, PriorYearLeaver			
Used in Domain			
Student Identification and Demographics, Prior Year Leaver			

01 – At Risk
Definition
<p>The At Risk student characteristic indicates whether a student is currently identified as “at-risk” of not meeting standards or dropping out of school using state-defined criteria (TEC §29.081, Compensatory and Accelerated Instruction). Local criteria are not included in this indicator code. A student “at-risk of dropping out of school” is under 26 years of age and who:</p> <ol style="list-style-type: none"> was not advanced from one grade level to the next for one or more school years; [excludes prekindergarten or kindergarten students who were not advanced as a result of a documented request by the student’s parent under TEC §29.081 (d-1).]

<p>level equal to at least 110 percent of the level of satisfactory performance on that instrument;</p> <ol style="list-style-type: none"> is in prekindergarten, kindergarten or grade 1, 2, or 3 and did not perform satisfactorily on a readiness test or assessment instrument administered during the current school year; is pregnant or is a parent; has been placed in an alternative education program in accordance with TEC §37.006 during the preceding or current school year; has been expelled in accordance with TEC §37.007 during the preceding or current school year; is currently on parole, probation, deferred prosecution, or other conditional release; was previously reported through the Public Education Information Management System (PEIMS) to have dropped out of school; is an emergent bilingual student, as defined by Section 29.052; is in the custody or care of the Department of Family and Protective Services or has, during the current school year, been referred to the department by a school official, officer of the juvenile court, or law enforcement official; is homeless, as defined by 42 U.S.C. Section 11434 (a), and its subsequent amendments; resided in the preceding school year or resides in the current school year in a residential placement facility in the district, including a detention facility, substance abuse treatment facility, emergency shelter, psychiatric hospital, halfway house, cottage home operation, specialized child-care home, or general residential operation; has been incarcerated or has a parent or guardian who has been incarcerated, within the lifetime of the student, in a penal institution as defined by Section 1.07, Penal Code; or is enrolled in a school district or open-enrollment charter school, or a campus of a school district or open-enrollment charter school, that is designated as a dropout recovery school under TEC §39.0548. <p>or, regardless of the student’s age, each student who participates in an adult education program provided under a high school diploma and industry certification charter school program under Section §29.259.</p>
Special Instructions
None
Former Data Element Name and Number
AT-RISK-INDICATOR-CODE (E0919)

DESCRIPTOR TABLE

■ StudentCharacteristic (C344)

Table Identification	Name	Date Issued	Date Updated
C344	StudentCharacteristic	11/01/2021	12/01/2022
Descriptor	Short Description	Long Description	
01	At Risk	At Risk	
02	Immigrant	Immigrant	
03	Migratory	Migratory	
04	Dyslexia	Dyslexia	
05	T-STEM	Texas Science, Technology, Engineering And Mathematics Initiative	
06	ECHS	Early College High School	
07	P-TECH	Pathways In Technology Early College High School	
08	New Tech	New Tech	
09	IEP Continuer	IEP Continuer	
10	Star Of Texas	Star Of Texas	
11	PK Eligible Prior Year	PK Eligible Prior Year	
12	Section 504	Section 504	
13	Intervention Strategy	Intervention Strategy	
14	Pregnancy Related Services	Pregnancy Related Services	
15	Gifted And Talented	Gifted And Talented	
16	Adult Previous Attendance	Adult Previous Attendance	
17	General Education Homebound	General Education Homebound	
18	Parent Request Retention	Parent Request Retention	
19	Bilingual/ESL Summer School	Bilingual/ESL Summer School	
20	Additional Days Program Participation	Additional Days Program Participation	
21	Virtual Student Not In Membership	Virtual Student Not In Membership	

EXAMPLE OF MULTIPLE CHARACTERISTICS

- Multiple instances (sub entities) for a student depending on which ones apply to them.
 - Each student characteristic will have its own descriptor value with a begin date and end date.

StudentEducationOrganizationAssociation					
.StudentCharacteristic					
<i>(may have multiple instances)</i>	StudentCharacteristic		14	StudentCharacteristic	
	Period	BeginDate	2022-08-17	Date	
		EndDate	2023-03-21	Date	
	DesignatedBy			Not Collected	

StudentEducationOrganizationAssociation					
.StudentCharacteristic					
<i>(may have multiple instances)</i>	StudentCharacteristic		15	StudentCharacteristic	
	Period	BeginDate	2022-08-17	Date	
		EndDate	Null	Date	
	DesignatedBy			Not Collected	



NAVIGATION



Texas Education Data Standards 4.x



	About	Education Data Warehouse	TPEIR Public Reports	TEDS Data Standards	Technical Resources	News & FAQs	Feedback
--	-------	--------------------------	----------------------	---------------------	---------------------	-------------	----------

[TSDS](#) > [TEDS Data Standards](#) > ODS Upgrade Data Standards



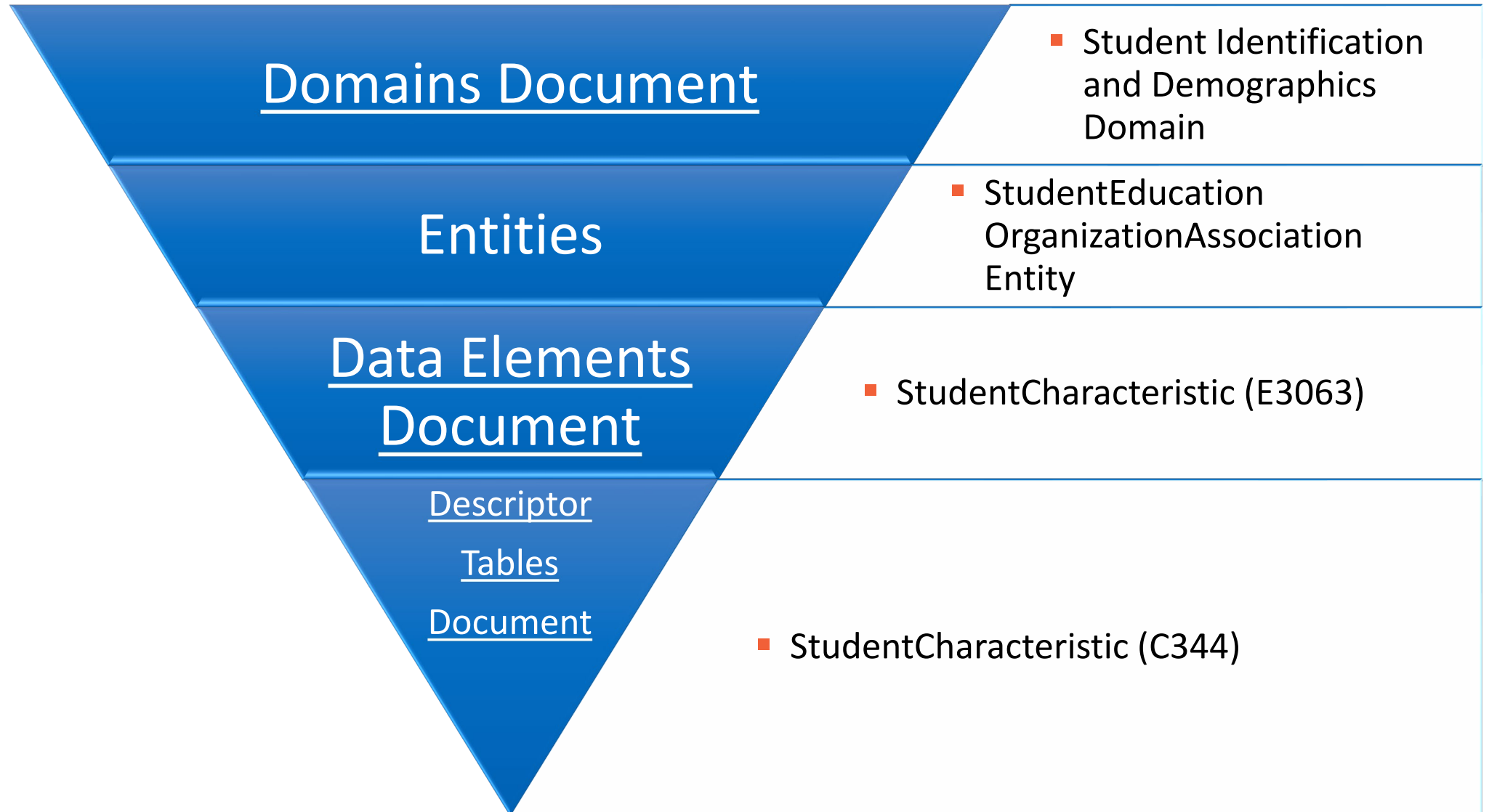
TSDS UPGRADE PROJECT
LEARN MORE HERE

Operational Data Store (ODS) Upgrade Texas Education Data Standards

For additional information about the ODS Upgrade TEDS please visit the [TEDS data standards](#). For the current XML-based standards, please visit [TWEDS](#).

The links below provide access to TEDS for the ODS Upgrade data standards.

ODS Upgrade Guidance	Updated
Data Submission Requirements	
References	07/01/2023
ODS Upgrade Parallel Year	Released



BEGIN & END DATE DATA ELEMENT

How do I access the document?

- [Begin and End Date Data Element Definitions Document](#)
 - For each of the data elements listed, definitions are provided for the begin date and end date in the context in which it is reported.

What's changed in TEDS?

- E.g., **StudentCharacteristic (E3063)**
 - **BeginDate (E3010)** is the first instructional day a student is assigned to the StudentCharacteristic descriptor.
 - **EndDate (E3020)** is the first day after the last instructional day a student is no longer assigned to the StudentCharacteristic descriptor.

How do I access the document?

- [Data Validations Rules Document](#)
 - Excel document with a complete list of all the Level 1, 1.5, 2 and 3 validations.
 - Rules for the TSDS Upgrade Project can be filtered by:
 - Validation Level
 - Rule Number
 - Category
 - Subcategory
 - Etc.
 - Changes to rules will be found in the document - Column O.

What's changed in TEDS?

- Validation Levels: 1, 1.5, 2 & 3
 - Majority of the rules are the same except just rewritten to align to TEDS terminology.
 - E.g., Rule Number - 44425-0060
 - Current TEDS: If **DISCIPLINARY-ACTION-REASON-CODE** is "36" or "37", then **BEHAVIOR-LOCATION-CODE** must be "01", "03", or "05".
 - TEDS : If **Behavior** is "36" or "37", then **IncidentLocation** must be "01", "03", or "05".

Cumulative Change Log

- Cumulative Change Log Document
 - Includes all changes to Domains, Entities and Data Elements.
 - Tables of Contents:
 - Section 1- Describe changes to Domains Entities, and Common Types.
 - Section 2 - Describe changes to Data Elements.

Descriptor Table Document

- Cumulative Change Log – Descriptor Table Document
 - Includes changes to Descriptor Tables and/or descriptor values.

DATA SUBMISSION REQUIREMENTS

How do I access the document?

- [Data Submission Requirements Document](#)



What's changed in TEDS?

- More detailed training will be provided in the ESC Coordinator TSDS Training on August 1-2, 2023.

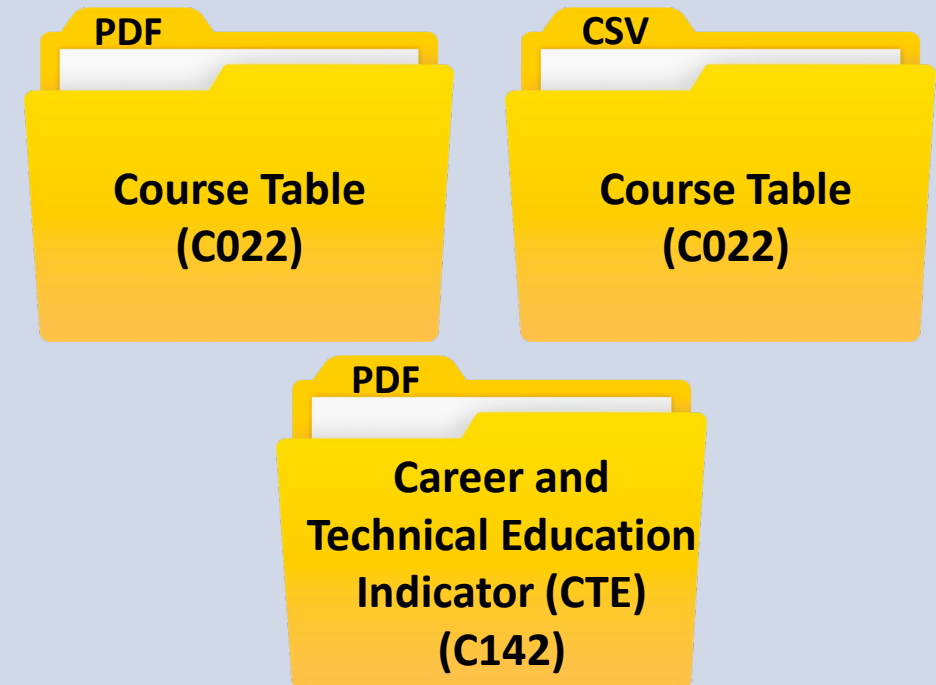


How do I access the document?

- [TEDS References Document](#)
 - Includes the descriptor tables for:
 - Course IDs (C022)
 - Career and Technical Education Indicator (CTE) (C142)

What's changed in TEDS?

- Three Technical Documents:



■ ODS 4.x Handbook

- Technical document that provides the keys and required data elements for the API and includes data types and definitions.

Include Definition in Search

[Displaying 1101 of 1101]

[AbsenceEventCategory](#)

[AcademicHonor](#)

[AcademicHonorCategory](#)

[AcademicSubject](#)

[AcademicWeek](#)

[Accommodation](#)

[Account](#)

[AccountabilityRating](#)

[AccountClassification](#)

[AccountCode](#)

[AccountCodeCategory](#)

[AccountCodeDescription](#)

[AccountCodeNumber](#)

[AccountIdentifier](#)

Student

UML Type: Class

MetaEd Metadata

MetaEd Entity Type: Domain Entity

MetaEd ID: 585

Definition

This entity represents an individual for whom instruction, services, and/or care are provided in an early childhood, elementary, or secondary educational program under the jurisdiction of a school, education agency or other institution or program. A student is a person who has been enrolled in a school or other educational institution.

References

Property	UML Datatype	JSON Datatype	Other	Identity	Cardinality	Definitio
StudentUniqueId	String	string	MetaEd DSL Datatype: SharedStringProperty	Yes	required	A unique assigned



KNOWLEDGE CHECK

Training Activity

KNOWLEDGE CHECK

- 1.** What Ed-Fi Data Standard are the Texas Education Data Standards (TEDS) being built upon for the TSDS Upgrade Project?
 - A. Ed-Fi Data Standard version 2
 - B. Ed-Fi Data Standard version 3
 - C. Ed-Fi Data Standard version 4
 - D. None of the above

KNOWLEDGE CHECK

2. During the 2023-2024 school year only LEAs participating in the Parallel submission will use the TEDS version 4.x.
 - A. True
 - B. False

- 3.** In TEDS version 4.x, what were interchanges are now referred to as:
- A. Descriptor Tables
 - B. Data Elements
 - C. Entities
 - D. Domains

KNOWLEDGE CHECK

4. Which descriptor table should be used in TEDS version 4.x to provide information on programs and/or services in which a student is participating?
 - A. PARTICIPATION-INDICATOR-CODE (C088)
 - B. StudentCharacteristic (C344)

KNOWLEDGE CHECK

5. The BeginDate (E3010) and/or EndDate (E3020) will be required to be reported for each student characteristic.
- A. True
 - B. False

Note: Some student characteristics do not require an EndDate (E3020) unless the student's status changes. BeginDate (E3010) is always required for each student characteristic.

A low-angle, close-up photograph of a person's legs and feet walking on a paved path. The person is wearing dark blue jeans and black sneakers with white soles. The background is a bright, out-of-focus outdoor setting with green grass and a clear sky, suggesting a sunny day.

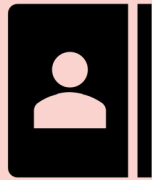
WRAP UP

Key Takeaways, Resources, and Next Steps

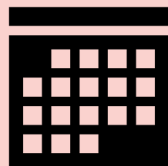
KEY TAKEAWAYS



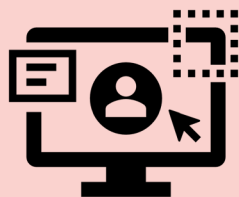
The Texas Education Data Standards are being **updated to Ed-Fi version 4.x** for the TSDS Upgrade Project.



Student Characteristics will now be reported at the **descriptor level** for TEDS.



Begin Dates and **End Dates** are required for most data elements for TEDS.



LEAs participating in the 2023-2024 Parallel Submission should utilize the online **TEDS documentation**.

AVAILABLE RESOURCES



TSDS Upgrade Project

- Description and information on the project



ODS Upgrade TEDS

- Domains
- All Data Element Definitions
- Begin and End Date Definitions
- Descriptor Tables
- Data Validation Rules
- Change Logs (Cumulative and Descriptor Table)
- Data Submission Requirements
- Technical Resources

NEXT STEPS



Begin to utilize the online TEDS documentation to understand the key changes for the upcoming 2023-2024 Parallel Submission.



Plan to take additional training on:

- DMC
 - TEAL Roles
 - Administrative Features
 - Level 1.5 Filters
 - Descriptor Mapping
 - Level 2 Validations

In this training we talked about:

- Why TEA is updating TEDS for the TSDS Upgrade Project.
- The key changes for TEDS and how student characteristics will be reported differently.
- How to navigate through TEDS documentation to effectively support LEAs for the 2023-2024 Parallel Submission.

QUESTIONS

