



TSDS Upgrade Project

Descriptor Mapping in the DMC

KEY TERMS

Application Programming Interface (API)

Data Management Center (DMC)

Descriptor Value

Descriptor Mapping

Ed-Fi Data Standard

Namespace

Texas Education Data Standards (TEDS)

You can find the definitions to these key terms and more here: [Link to Key Term Document](#)

LEARNING OBJECTIVES

By the end of this course, the user will be able to explain:

- The TEA Login (TEAL) role and privilege needed to map descriptors in the Data Management Center (DMC).
- The definition of a descriptor mapping.
- How to map Ed-Fi and/or local descriptors defined descriptor values in the DMC for TSDS state reporting.

WHY IS THIS COURSE IMPORTANT

- To understand how to access the DMC to **map Ed-Fi and/or local descriptors** loaded into the LEA's Individual Operational Data Store (IODS) to TEA descriptors necessary for TSDS state reporting.

COURSE AGENDA

GETTING STARTED

Apply for DMC LEA Data Monitor Role

KEY CONCEPTS

Descriptor Mapping, Namespace Types, When to Map

Training Activity

Demo, Practice, Troubleshooting, Knowledge Checks

WRAP-UP

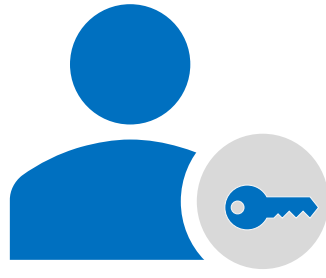
Key Takeaways, Resources, and Next Steps





GETTING STARTED

Apply for DMC LEA Data Monitor Role



LEA TEAL ROLE

- LEA Technical Administrator:
 - DMC LEA Data Monitor



KEY FUNCTIONS

- Administrator Functionality:
 - Map Descriptor Values

REQUESTING TEAL ACCESS

Please refer to the LEA TEAL Roles and Privileges training material if you need more information on:

1. Requesting Access to the TSDS Portal
2. Applying for the TEAL Roles.

APPLY FOR DMC LEA DATA MONITOR ROLE

STEP 1:

Enter your **Employing Organization** and select the **DMC LEA Data Monitor** role.

Applications **Edit Account** x

Application access details

Steps for adding access

1. Enter your Employing Organization (name or organization number).
2. Click the checkbox/radio button for the role(s) that you are applying for.
3. If there are parameters for the role(s) selected, enter that information.
4. Click the "Done" button to **queue** your request. This does not submit your request to TEAL.
5. Click the "Save Changes" button. This will then submit your access request to TEAL.

Employing Organization

* Organization: Who do you work for? In other words, what organization employs you (e.g. district, ESC, charter school)?

Roles & Parameters

- DMC LEA Data Monitor
- DMC LEA L2 Validations

STEP 2:

Enter the **Requested Organization** in the *Requested Organization ID* field, select the **DMC Map Descriptors** privilege and click **Done**. Click **Save Changes**.

DMC LEA Data Monitor

Description:

DMC LEA Data Monitor

* Requested Organization ID:
(Requested Organization ID)

Privileges:

- DMC L1.5 Filters Access
- DMC Map Descriptors
- DMC Search Data
- DMC Summary Access to LEA Data



KEY CONCEPTS

Descriptor Mapping, Namespace Types, When to Map

WHAT IS DESCRIPTOR MAPPING?

- Functionality within the DMC that allows an LEA to **map Ed-Fi and/or local descriptor values** loaded into the LEA's IODS to **TEA descriptor values necessary for TSDS state reporting.**
 - An LEA's vendor may also provide this functionality through the API.
- If the descriptor value is **not intended to be reported to TSDS**, then the LEA should map it to be **“excluded” from TSDS state reporting.**
- The namespace(s) the LEA's vendor(s) use will determine if mapping is required.
 - Ed-Fi, Local, and/or TEA Namespace
 - Work with your vendor to understand the namespace(s) being used.

TYPES OF NAMESPACES

TEA

- TEDS-compliant descriptor values
- Do not trigger Level 1.5 Descriptor Value filters
- Do not require DMC or API mapping to make the data available for TSDS state reporting
- Allows data promotion to TSDS for state reporting without the need for any mapping

ED-FI/LOCAL

- Ed-Fi/Local descriptor values
- Triggers Level 1.5 Descriptor Value filters until the descriptor is mapped
- Requires DMC or API mapping to make the data available for TSDS state reporting and clear the Level 1.5 filters
- Allows for the Ed-Fi/Local descriptor values to be used for local use

Monitor Validations

View L1.5 Filter Details

Search Criteria
 Type:
 Verified:

NOTE: The data in this table will not be moved to TSDS.

Show entries Search Table:

Type ↑	Rule ↓	Message ↓	Verified ↓
Descriptor Value	The descriptor value provided is not a valid TSDS value.	Entity: StudentSchoolAssociation Non-TEDS Data: EntryType New to education system Identifying Info: EntryDate: 2021-08-01, SchoolId: 701603001, StudentUniqueld: 194652321 Highest-level data group that will not move: EntryType	<input type="checkbox"/>

Table Identification	Name	Date Issued	Date Updated
C334	EntryType	11/01/2021	07/01/2022
Descriptor	Short Description	Long Description	
1	Entry	Entry	

- If the LEA's vendor is using a namespace other than the TEA namespace, the LEA will need to map those descriptors intended for TSDS state reporting.

TYPES OF OUTGOING VALUES

Data Management Center

EntryType

Local Values	Outgoing Values
New to education system	1 (Entry)
Next year school	Excluded from TSDS
Other	Excluded from TSDS
Re-entry	Excluded from TSDS
Transfer	Unmapped (Excl. from TSDS)

Save Cancel

- **TSDS Descriptor value:**
 - Local value will remain in the IODS for local use.
 - The mapped outgoing value will move to TSDS during the promotion process. TEDS-compliant descriptor values for this data element will appear in the dropdown that can be used to map to include for TSDS state reporting.
 - Local value will no longer appear in the Level 1.5 filters.

- **Excluded from TSDS:**
 - Local value will remain in the IODS for local use.
 - Will be excluded from TSDS state reporting
 - Local value will continue to appear in the Excluded from TSDS filters results.

- **Unmapped (Excl. from TSDS):**
 - Local value will remain in the IODS for local use.
 - Will be excluded from TSDS state reporting
 - Local value will continue to appear in the Level 1.5 filters.



TRAINING ACTIVITIES

Demo, Practice, Troubleshooting, Knowledge Checks

DEMONSTRATION

1. Log into a TSDS Portal.
2. Navigate to DMC.
3. Hover over Admin tab and click Map Descriptors.
4. Select the local descriptor value(s) and map it with the appropriate Outgoing Value: TEDS descriptors, Excluded from TSDS, and Unmapped (Excl. from TSDS).
5. Verify the mapped TEDS Descriptor values that are intended for TSDS state reporting no longer appear in the Level 1.5 filters.

Note: The Reference Guide is a resource that provides step-by-step instructions for Mapping Descriptors.

[Link to RG](#)

PRACTICE EXERCISE

Task 1: Review the Ed-Fi and/or local descriptor values appearing in the Level 1.5 filters.

Task 2: Map the Ed-Fi and/or local values that are intended for TSDS state reporting to a valid TEDS descriptor value.

Task 3: Verify the mapped TEDS Descriptor value no longer appears in the Level 1.5 filters.

Ready

Set

Go

Scenario 1: LEA only intends to publish TEDS descriptor values into IODS for TSDS state reporting. Why is this Descriptor Table with the Local Value appearing in the Map Descriptor Values user interface?

Descriptor Value	The descriptor value provided is not a valid TSDS value.	Entity: StudentEducationOrganizationAssociation
		Non-TEDS Data: Sex: Female
		Identifying Info: EducationOrganizationId: 701603 StudentUniqueId: 0123456789
		Highest-level data group that will not move: StudentEducationOrganizationAssociation Entity

The screenshot shows the 'Data Management Center' interface. Under 'Map Descriptor Values', there are filters for 'Target Namespace' (TSDS), 'Status' (All), and 'Descriptor Table'. A table below shows 'Local Values' for 'Sex' with a value of 'Female' and '# Not Mapped' as '1'. To the right, 'Outgoing Values' shows 'F - Female'.

Descriptor Tables	# Not Mapped	Local Values	Outgoing Values
Sex	1	Female	F - Female

Resolution Steps:

- Any descriptor value that does not conform to TEDS standards will appear in the Level 1.5 filters.
- In TEDS, the TSDS Descriptor Value for “Sex” is “F” and not “Female”.
- LEA needs to work with their vendor to ensure the TEA namespace value TEDS Descriptor Value “F” is publishing to the IODS.
- Once the correct TEDS Descriptor Value “Sex” is published to the IODS, this should clear the Level 1.5 filter.

Scenario 2: LEA wants to keep the Local Descriptor Value in the LEA's IODS for local use and promote the TEDS Descriptor Value to TSDS, how can this mapping be done in the DMC application?

**Local Descriptor Value
LevelOfEducation (xxx):**

Trade School

Table Identification	Name
C015	LevelOfEducation
Descriptor	Short Description
0	No Degree
1	Bachelor's
2	Master's
3	Doctorate

Resolution Steps:

- To map the local descriptor “TradeSchool” to the appropriate TEDS-compliant descriptor code value in the DMC for TSDS state reporting:
 1. Click the Descriptor Table **LevelOfEducation**
 2. Select the appropriate TEDS-compliant value from the Outgoing Values drop-off menu “e.g., 0- No Degree”
 3. Click the **Save** button to save the mapping.
- Verify the non-TEDS descriptor value “TradeSchool” no longer appears in the Level 1.5 filters.

Data Management Center

Monitor Validations Admin

Home >> Map Descriptors

Map Descriptor Values

Local Values in Your IODS

Target Namespace:

Status:

Descriptor Table:

Descriptor Tables ↑ # Not Mapped ↓

LevelOfEducation	1
------------------	---

1

LevelOfEducation

TradeSchool →

Outgoing Values

0 – No Degree

2

3

1. Which TEAL role will be needed to map descriptors in the DMC?
 - A. DMC LEA Admin Config
 - B. DMC LEA Data Monitor
 - C. DMC LEA Technical
 - D. DMC LEA L2 Validations

NOTE: An LEA should limit the access to the 'DMC Map Descriptors' privilege for this role to only those responsible for mapping descriptors in the DMC application.

KNOWLEDGE CHECK

- 2. Data elements using Ed-Fi/Local descriptor values will require DMC or API mapping to make the data available for TSDS state reporting.**
 - A. True
 - B. False

NOTE: The Ed-Fi/local descriptor value will remain in the IODS for local use.

KNOWLEDGE CHECK

3. Ed-Fi/Local descriptors that are mapped in the DMC as ‘Excluded from TSDS’ or ‘Unmapped (Excl. from TSDS)’ will continue to appear in the Level 1.5 Descriptor Values filter.
 - A. True
 - B. False

NOTE: Only ‘Ed-Fi/Local’ descriptors that are mapped in the DMC to a ‘TSDS Descriptor Value’ will no longer appear in the Level 1.5 filters.

A low-angle, close-up photograph of a person's legs and feet walking on a paved path. The person is wearing dark blue jeans and black sneakers with white soles. The background is a bright, out-of-focus outdoor setting with green grass and a clear sky, suggesting a sunny day.

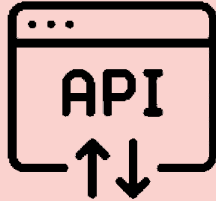
WRAP UP

Key Takeaways, Resources, and Next Steps

KEY TAKEAWAYS



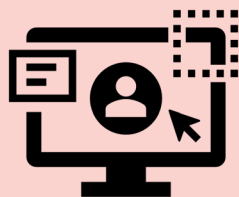
The **DMC LEA Data Monitor** role is required to map descriptors in the DMC.



The **namespace** utilized by the source system vendors may require descriptor mapping in the DMC.



Descriptor values not mapped to a **Texas Education Data Standards value** will not be promoted to TSDS.



Descriptor values can be mapped, excluded, or left as unmapped in the **DMC application**.

TRAINING RESOURCES



- [Key Terms and Definitions](#)



- [Reference Guide for Descriptor Mapping](#)

NEXT STEPS

Apply for the DMC LEA DATA MONITOR role

- Utilize the training materials available for step-by-step instructions in the Reference Guide.
- Apply under the Texas Student Data System Portal Application.
- Monitor the approval process and follow up with the designated TEAL approver as needed.

View the Level 1.5 filters in the DMC

- Check to see if there are any descriptor value filter results.
- If necessary, map to TEDS descriptor values for TSDS state reporting.

In this training we talked about:

- The DMC LEA Data Monitor role needed to map descriptors in the DMC application.
- The definition of descriptor mapping.
- How to map descriptors in the DMC application.

QUESTIONS

