

Syosset Central School District School Reopening Plans



Presentation to the Board of Education
July 29, 2020

Introduction



On July 13, 2020, Governor Andrew M. Cuomo announced new, data-driven guidance for reopening schools in New York State.

Schools in a region can reopen if that region is in Phase IV of reopening and if its daily infection rate remains below 5 percent, or lower, using a 14-day average since unPAUSE was lifted.

Schools will close if the regional infection rate rises above 9 percent, using a 7-day average, after August 1st

New York State will make the fall reopening decision during the week of August 1-7

Timeline



- June-July** Eight Reopening Task Force Meetings
- July 13** NYS [Department of Health Guidance](#) given
NYS DOH [Checklist](#) Provided
- July 16** NYS [Education Department Guidance](#) given
Syosset staff survey released
- July 17** NYS [Education Department Q&A](#) Released
Syosset parent survey released
- July 22** Staff Survey for “vulnerable populations”
- July 23** Board of Education Workshop:
Reopening Plans and Survey Results
- July 24** ThoughtExchange community feedback
- July 27** *Staff survey to “vulnerable populations”*
- July 29** *Survey to parents on transportation*
- July 29** *Special BOE Meeting(live & streamed)*
- July 30** *Parent Survey: “vulnerable populations”*
- July 31** *Reopening Plans filed with NYS*

Reopening Plans: 3 Plans Required



1. A plan to **maximize the number of students** who return to live, in-person, instruction;
2. A plan for **virtual learning** in the event that COVID-19 infection rates rise and school becomes too risky; and
3. A “**hybrid**” plan that reduces the number of students in school at any one time to both increase social distance, and reduce the number of potential “close contacts” should a positive case occur in the learning community.

Please note any plans put into place for the fall will be subject to change based on the status and severity of COVID-19 in our area, as well as state and public health requirements.

Community Input



Step 1: Parent Survey

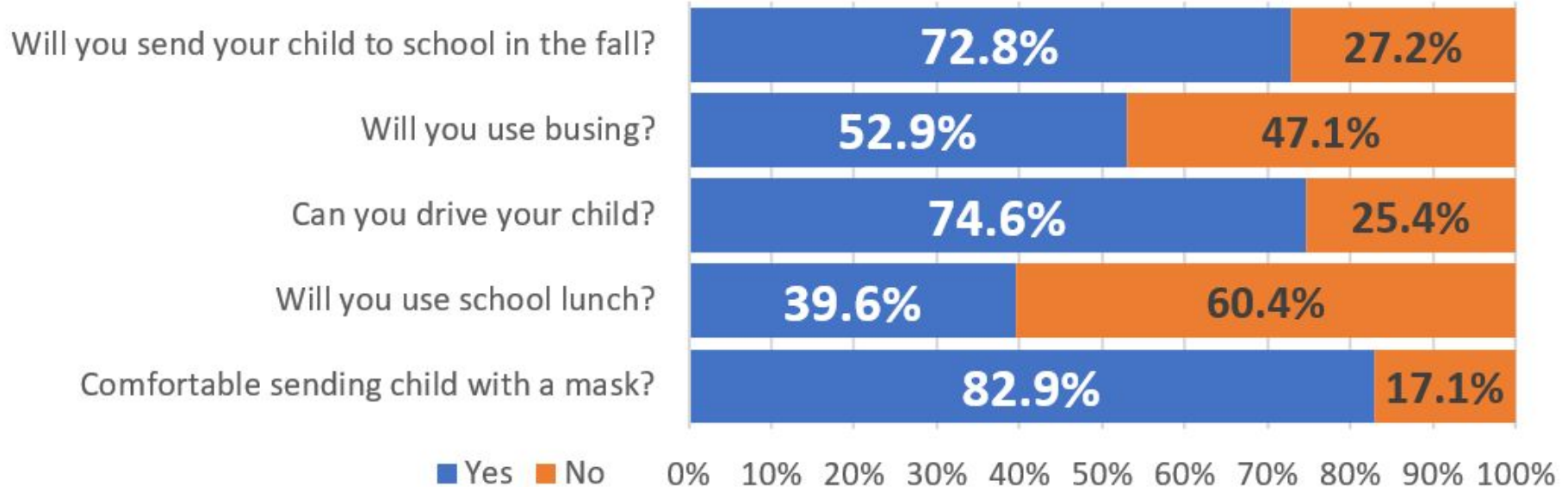
- Total responses: 3,945
- Total number of comments: 1,661

Step 2: ThoughtExchange

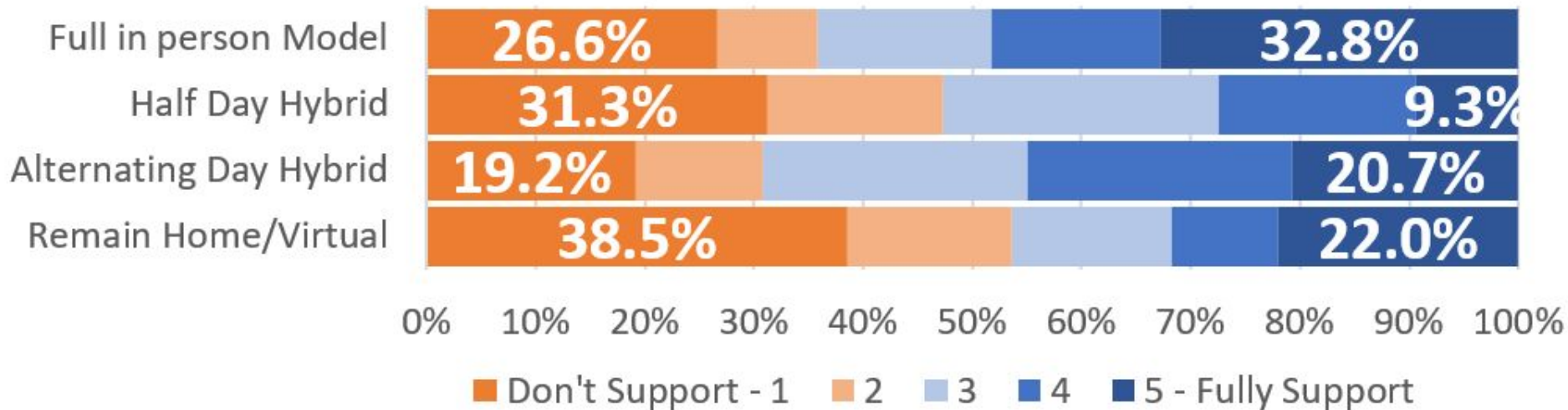
- Opened July 24, 2020
- 1,638 participants; 2,613 thoughts shared, 118,537 ratings on the thoughts



Parent Survey – Main Points

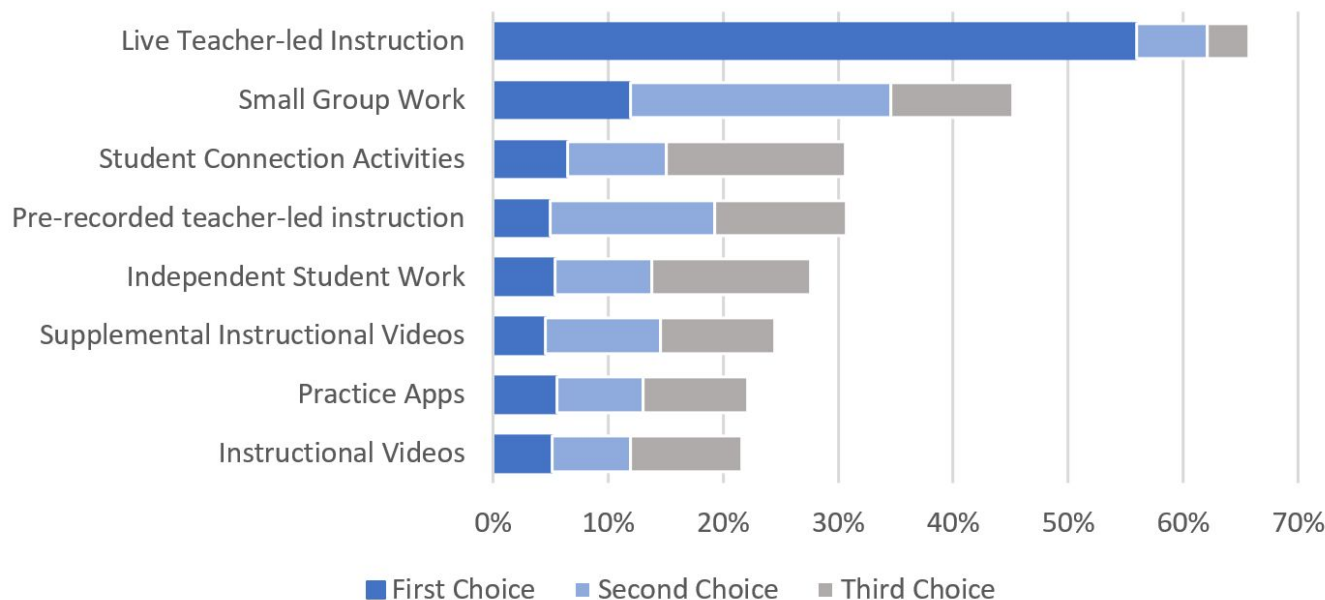


Parent Feedback on Instructional Models



Parent Feedback – Learning from Home

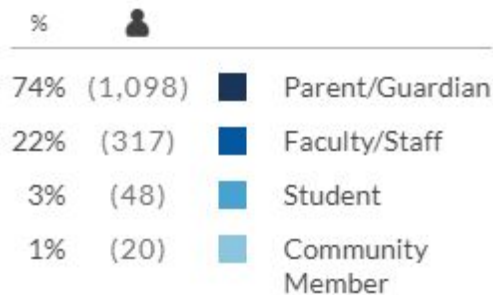
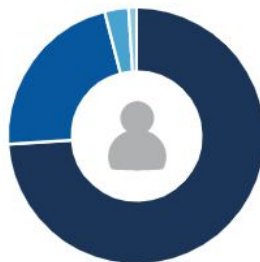
Based on Learning from Home Last Spring, What Practice was most Successful?



Thought Exchange Community Engagement

What thoughts and questions do you have about Syosset's Fall 2020 Draft Reopening Plan?

- What best describes your role in the District?



Thought Exchange Community Engagement

Highest Rated Thoughts:

Masks should be mandatory It is the most effective way to prevent the spread of the virus. 4.6 ★

Has the HVAC system been changed to have a higher filter rating? Since lessons will not be outdoors, risk of transmission is greater indoors with air re-circulating inside. 4.6 ★

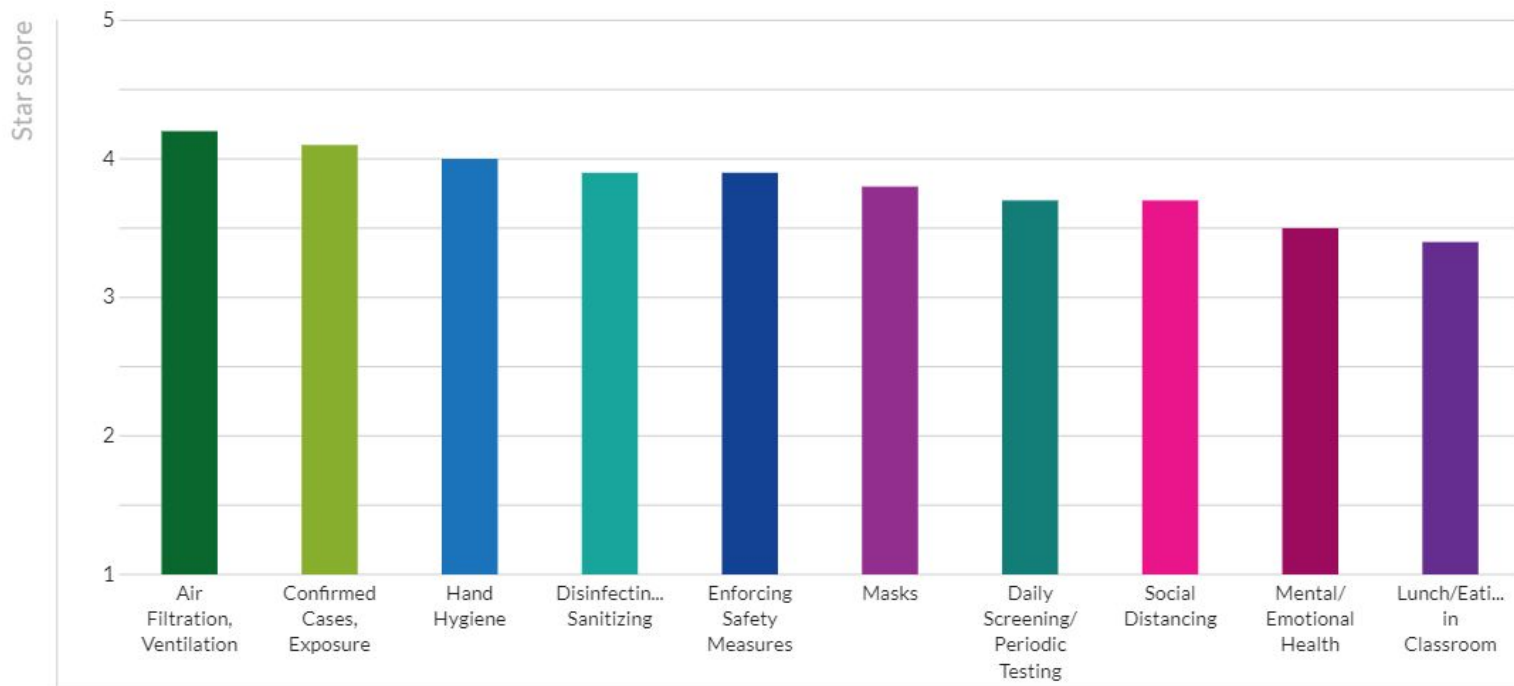
Air filtration system is essential. Will they be installed so that fresh air circulates prior to our return? This is essential to our safety. 4.5 ★

If/when a student/teacher tests positive, what is the procedure for reentry into school? It is important to ensure students and teachers don't feel pressure to return to school too soon and risk reinfection or the infection of others. 4.5 ★

There can't be any exceptions if a mask rule is enacted. 4.4 ★

Thought Exchange Community Engagement

Ratings of comments related to specific health and safety protocols



Thought Exchange Community Engagement

“Side A”
Uncomfortable
with reopening
school buildings

**Common
ground:**
Focus on
protocols to
mitigate the
spread of the
virus

Side A

Concerns over asymptomatic spreading.
May result in a second wave of community outbreak placing those with weakened immune systems at highest risk.

★ 5.0 ★ 1.2

just because you want society to get back to "normal", without following virtual learning, you are making the process even LONGER. it is better to just learn virtually & completely minimize the risk. THEN YOU CAN go back to normal. if you rush it the cases will go up AGAIN & now we have to take longer

★ 4.9 ★ 1.3

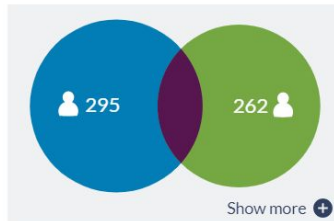
I'm terrified sending my children back to school. I don't think we are safe yet.

★ 4.9 ★ 1.4

I am not comfortable sending my child to school full time. I don't think it is safe enough to have the students back in person full time. My child health safety. Full in school capacity is not enough for social distancing

★ 4.8 ★ 1.5

I think we need to begin with remote learning and reassess when vaccine comes out. For fluid learning. To start and stop again is disruptive.



Side A/B Common (high)

Mask should be mandatory It is the most effective way to prevent the spread of the virus.

★ 4.9 ★ 4.1

If/when a student/teacher (God forbid) tests positive, what is the procedure for reentry into school? It is important to insure students and teachers don't feel pressure to return too soon and risk reinfection or the infection of others.

★ 4.9 ★ 4.3

Are school HVAC systems being upgraded with the recommended HEPA filters that help filter the virus for indoor spaces?

These filters are recommended to further protect the community in indoor spaces.

★ 4.9 ★ 4.3

Side B

I strongly believe schools must reopen. Our children must be taught in person and have the ability to socialize amongst their peers.

★ 1.0 ★ 4.9

Hoping kids can go back in person They NEED it, parents need it, we feel it is safe

★ 1.3 ★ 4.7

Children of all ages need to be around their peers in person to develop in a healthy way.

There is social and psychological development occurring in school age children that they need to be around peers for healthy growth and development.

★ 1.4 ★ 4.9

Our children are more likely to die from a lightning strike or a car accident driving to school than COVID. I realize the district must defer to the political leaders of NYS but every effort must be made to get our kids back to school.

★ 1.0 ★ 4.0

I think if we are going back then we should be going back fully and with a normal schedule. Kids are minority impacted by Covid and there are many cases studies from other countries that prove that to be true.

“Side B”
Expresses
support of
reopening
school
buildings

Plan 1: In-Person Instruction



- Class sizes determined by social distancing requirements and room square footage
- Instruction a combination of in-person class sizes appropriate for each individual space. Small group work maximized.
- All certified staff will be used to maximize in-person instruction
- Lunch eaten in classrooms.
- K-8: Students remain in homeroom space, teachers rotate in to classroom to the extent practical.

Learning Plans – Elementary

All students attend
in-person learning,
Monday through Friday,
during normal school
hours

In-Person Elementary

- Each space in the building reviewed for appropriate social distancing.
- Many spaces within each building repurposed for instructional space.
- Classes split between two physical areas with a focus on small group instruction
- Utilization of “co-pilot” methodology for classes split between two physical areas
- Lunch and most specials to take place in classrooms
- Student schedule will allow for breaks and recess opportunities

Learning Plans – Middle School

All students attend in-person learning Monday through Friday with normal school day hours but on an 8-period schedule.

In-Person Middle School

- Challenge: Accommodate all students on a regular day schedule.
- Solution: Shift from a 9-period day to an 8-period day for 2020-21 only in order to have adequate staff for all students.
 - Changes in program for all three grades based on state regulations
 - Some electives postponed until 2021-22
- Each space in the building reviewed for appropriate social distancing.
 - Many spaces within each building repurposed for instructional space.
 - Classes split between two physical areas; staffed in teams
- Lunch in classrooms

Learning Plans – High School

- Not enough physical space to accommodate all students with appropriate social distancing
- Students attend in-person learning for instructional schedule on alternating days.
- eLearning will take place during alternating days.

In-Person High School

- Currently 97 classrooms at Syosset High School.
- 94% of those rooms are in use each of 9 periods on a normal day.
- When we reduce classroom capacity by 50%, we cannot place all students in classrooms for instruction.
- Not enough physical space to bring only ninth grade in everyday and alternate for other grade levels.
- All students would attend on alternating-days in a continuous 4 day cycle.

Day	1	2	3	4
Cohort	A	B	A	B

Health and Safety Protocols



- Physical safety is at the foundation of all else.
- Although we cannot eliminate risk altogether, we can take significant steps to minimize it, to protect the learning environment, and to address health concerns quickly as they arise.

Three Protocols for Safety in Classrooms

1. All students and staff will be required to wear masks/face coverings. School will provide masks if needed.
2. All instructional spaces are redesigned with students maintaining a social distance of six-feet from one another.
3. Desk partitions will be ordered for each student as an additional social-distancing precaution.

During mask breaks and eating, the partitions and distancing will be maintained.

Building Cleaning & Disinfecting Protocols

- Several times during the school day, custodial workers will clean and disinfect high touch points and surfaces (door knobs, light switches, push bars, stairwell handrails, ledges), hallway and nurses office bathrooms.
- Classroom monitors and/or aides will assist custodians by helping gather food after classroom meals and performing periodic cleaning of classroom chairs, desks and polycarbonate barriers during the school day, as required, utilizing Diversey Alpha PH multi-surface cleaner or alcohol wipes.
- Nightly, the custodial staff will spot mop, dust mop, clean and disinfect each classroom, classroom bathroom, nurse office, offices, gymnasium, multi-purpose room and high touch points with one of the District's disinfectant products (Diversey Virex II 256 or Bioesque Botanical Disinfectant Solution), using the appropriate applicator.
- Bi-weekly, the custodial staff will clean, disinfect and apply BioProtect on classroom, bathroom and other surfaces. BioProtect is an EPA established antimicrobial technology that provides protection to surfaces, protecting surfaces from microbes up to 90 days.

Building Cleaning & Disinfecting Protocols

Cleaning Products

The District's custodial staff utilizes cleaners that meet NYS Green cleaning standards and disinfectants that are EPA approved to be effective against viruses similar to the COVID-19 virus on hard, non-porous surfaces.

Cleaning Tools

The custodial team utilizes Victory sprayers and other applicators to thoroughly and effectively disinfect large areas. The Victory sprayers use the process of adding an electrostatic charge inside the liquid droplets when they are sprayed, helping the droplets to better cling to the surface and provide better disinfectant coverage.



Air Filtration

The District has worked with our architects and engineers to ensure that adequate ventilation is maintained. Air filters are being upgraded to the highest level recommended by our architects.

Air Filtration	Present	Sept 2020
Roof Top Units (RTU)	MERV 6	MERV 13
Classroom univentilators (older)	MERV 2 - 4	MERV 6 - 8
Classroom univentilators	MERV 7	MERV 10 - 13
Central Heating & Ventilation units	MERV 4 - 6	MERV 10 - 13
Ducted split AC fan coils	MERV 2	MERV 4
Ductless split AC wall units	MERV 2 - 3	MERV 10

Bathroom Upgrades

- By September, the District will have installed touchless soap and paper towel dispensers in each restroom in all school buildings.
- Sixteen bathrooms renovated during the summer of 2020 will have touchless faucets, touchless toilets & urinals, touchless soap and paper towel dispensers and touchless door opening systems.
- The District has purchased 21 portable handwashing stations and continues to work with our architects to increase the number of sink fixtures to help improve opportunities for additional handwashing hygiene.

Bus Health & Safety Protocols

- Students will be required to wear masks on the bus at all times (a supply of masks will be given to all drivers should students arrive at the bus without a mask).
- The district is developing low density routing.
- Students will be educated on maintaining social distancing at bus stops and when boarding and leaving the bus.
- Bus ventilation will be improved by opening windows a safe amount and by operating roof hatches and integrated exhaust fans.
- Upon arrival to work each morning and afternoon, all transportation employees are screened by the contractor for symptoms of COVID-19 and have temperature checks.
- School bus drivers, monitors and attendants are required to wear face masks and any drivers, monitors and attendants that have direct physical contact with a child will also wear gloves.

Bus Cleaning Protocols

- All interior surfaces of School Buses will be sprayed thoroughly with a sanitizing and disinfecting product called Valuguard VG-G200 every 30 days. This product is EPA approved, and kills 99% of germs and viruses on contact, including Human CoronaVirus. It is designed to dry on the surfaces, where it remains effective for up to 30 days.
- As an extra precaution all high contact surfaces (handrails, seat corners, etc) will be resprayed daily.

Food Services

Food Service - More limited meal options with service models focused on safety.

- Elementary and middle school students will have meals in classrooms
- HS students will have meals in several designated locations to allow for adequate social distancing.
- Exploring pre-order systems and meal delivery to elementary and middle school classrooms
- Mobile carts and grab-and-go meals for the high school
- Reinforcing hand hygiene and no sharing of food & utensils

Food Services

Aramark implementing enhanced safety training

COVID-19 Mitigation Protocols

PPE Protocols

Employee Health Monitoring

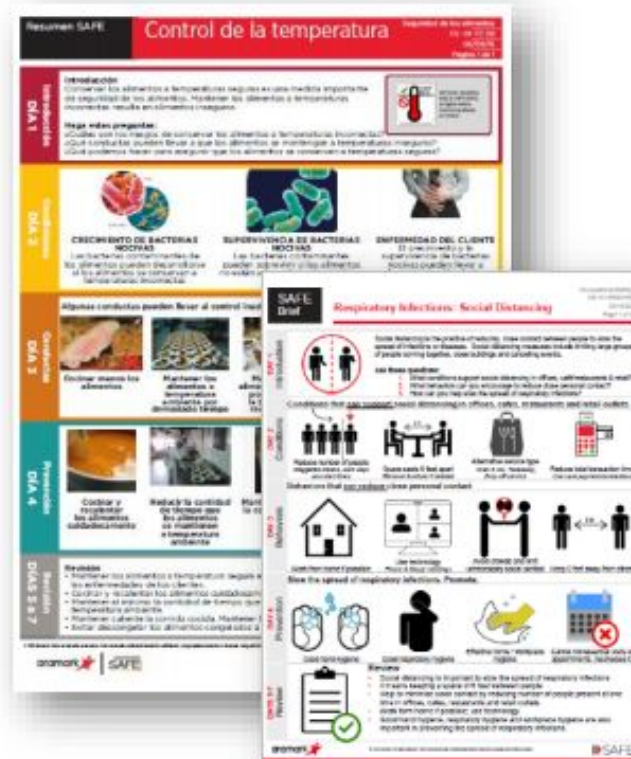
Increased sanitation measures:

- More frequent cleaning of all surfaces

- CDC hospital grade disinfectants

Health & Respiratory Hygiene Training

Social Distancing



Daily Health Screening / Temperature Taking

All students, staff, and visitors will complete a Daily Health Screening Questionnaire and attest to the fact that they are or are not exhibiting symptoms of COVID-19, that they have not been exposed to individuals knowingly positive for COVID-19, and that they have not traveled to a NYS quarantined state. Those who reply “yes” are directed NOT to enter the buildings.

Protocol for Daily Temperature Taking:

- Parents must take their child's temperature prior to sending the child to school or the bus stop.
- No student with a temperature of 100.0° F or greater should come to school or ride the bus.
- Upon arrival at school, trained personnel will be taking student temperatures again with touch-less IR thermometers.
- Students with temperatures of 100.0° F or greater will be directed to the nurses office and isolated in a separate space. A parent or guardian will be called to immediately pick the child up.
- Students may return to school upon symptom resolution and documentation from the health care provider per NYS DOH regulations.

Masks / Face Coverings

- All students and staff will be required to wear masks/face coverings at all times except during designated mask breaks.
- The District has and will maintain an inventory of face masks for students and staff that arrive without one.
- Students and staff will be permitted mask breaks providing they are protected by partitions around their desks and are more than six feet apart from other people.
 - CDC [guidelines](#) for “close contact” include an exposure period of 15 minutes. Therefore mask breaks will be for shorter than 15-minute durations.
- Mask policy will be reevaluated on 30-day intervals based on any updates to CDC or NYSDOH guidance.

Masks / Face Coverings

Face coverings may be challenging for students (especially younger students) to wear in all-day settings such as school. Face coverings will not be placed on:

- Students where such covering would impair their health or mental health, or where such covering would present a challenge, distraction, or obstruction to education services and instruction (must first seek accommodation/approval under the Section 504 process).
- Anyone who has trouble breathing or is unconscious
- Anyone who is incapacitated or otherwise unable to remove the cloth face covering without assistance

Students and staff may use alternate PPE (i.e., face coverings that are transparent at or around the mouth) for instruction or interventions that require visualization of the movement of the lips and/or mouths (e.g., speech therapy). These alternate coverings may also be used for certain students (e.g., hearing impaired) who benefit from being able to see more of the face of the staff member.

Protocols for Suspected / Confirmed COVID-19 Cases

The District has identified 1 Lead Nurse as the District COVID Coordinator who will, in communication with the District Physician, the Nassau County DOH, and District Administration:

- Oversee Health Screening, Containment, Contact Tracing, and Return to School.
- Communicate directly with the 12 Building-Level COVID Managers (school nurses).

Each school building has a dedicated room to isolate students or staff with symptoms of COVID-19 identified during the school day.

- Students and staff will be moved safely, respectfully, in accordance with applicable privacy laws and regulations, to the isolation room for evaluation.
- The individual will be provided a mask if they are able to use one, and students will be supervised by a staff member who maintains at least 6' of distance and uses appropriate PPE.
- School nurses and other healthcare providers will use Standard and Transmission-Based Precautions when caring for sick people.

Protocols for Suspected / Confirmed COVID-19 Cases

- For any situation where social distancing was not maintained, any children and staff must be considered close contacts and must complete a fourteen (14) day quarantine period.
- Students and teachers in a classroom with a known COVID-19 case in which social distancing was reliably maintained should remain together in the same cohort to the extent that is possible. They should receive screening for fever and symptoms each morning until 14 days after last contact with the case.
- Any of these students or teachers who are monitored and found to have symptoms of COVID-19 will be sent home and will be required to complete the required isolation period to return to school.
- The classroom will be closed for cleaning and disinfection before use again.

Protocols for Suspected / Confirmed COVID-19 Cases – Cleaning & Disinfecting

- Immediately following a student getting sick or having infectious symptoms in a classroom, the student will be removed from the classroom and the nurse will be contacted.
- After the sick student has been removed from the class, the remaining students will be moved out of the classroom to decrease risk of disease transmission.
- Students will be directed to thoroughly wash their hands.
- The classroom will be cleaned thoroughly.
- The entire classroom will be disinfected with the Electrostatic Sprayer to disinfect all touch points in the classroom (desks, chairs, tables, door knobs, lockers, etc.).
- Evening staff will use Electrostatic Sprayer to disinfect the remainder of any common space used by the affected individual to help prevent the spreading of the germs.

Going Forward

- **Finalize District Plans**
 - **Post “plain language plan” online**
 - **Post state-required assurances document online**
- **Continue to refine plan in August**
- **Finalize instructional models, ongoing curriculum work to develop teacher resources, and day-to-day details (rooms assignments, staffing, seamless transition, virtual model, etc.)**