

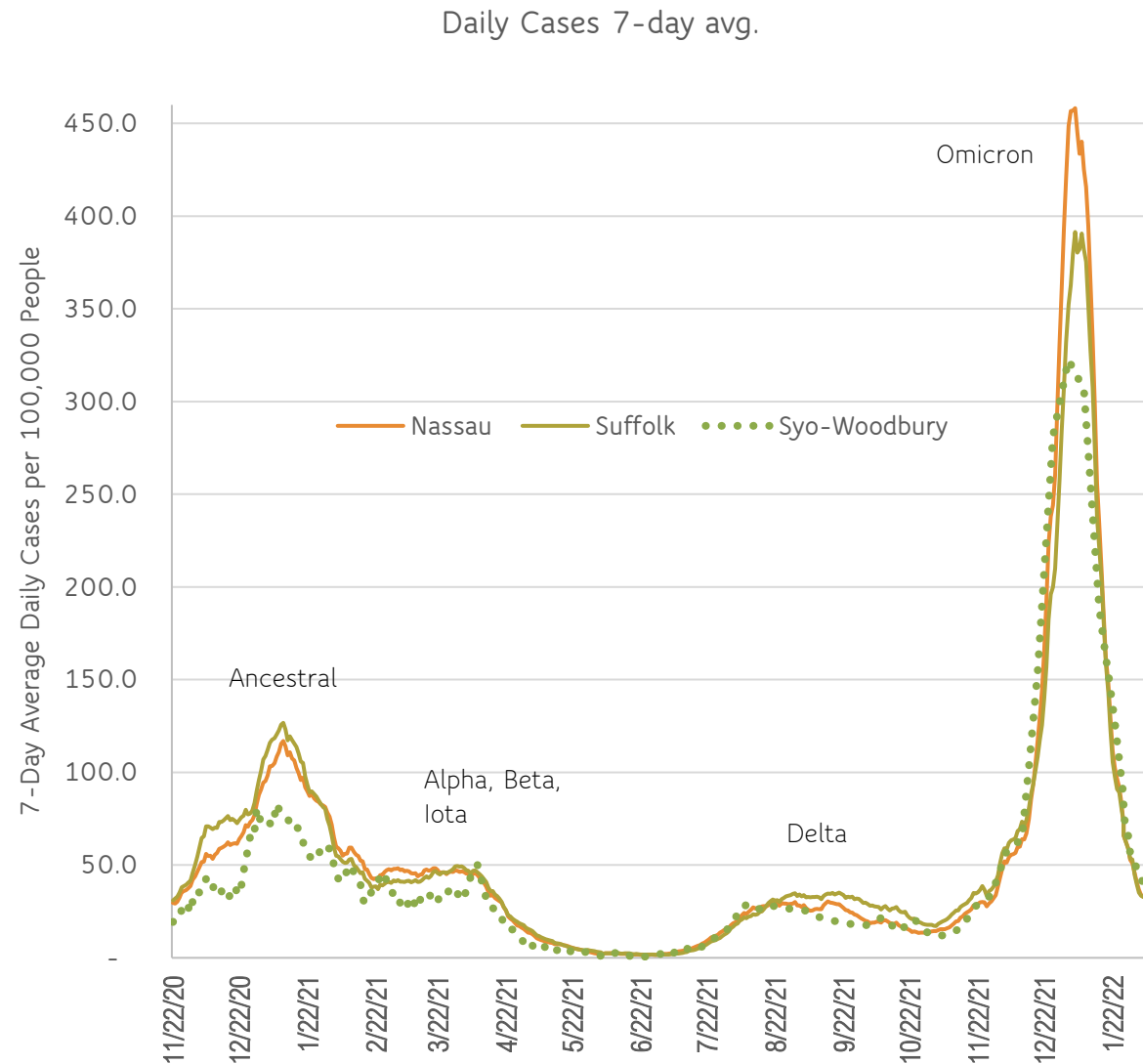
Superintendent's Report

SYOSSET SCHOOL DISTRICT

FEBRUARY 2022

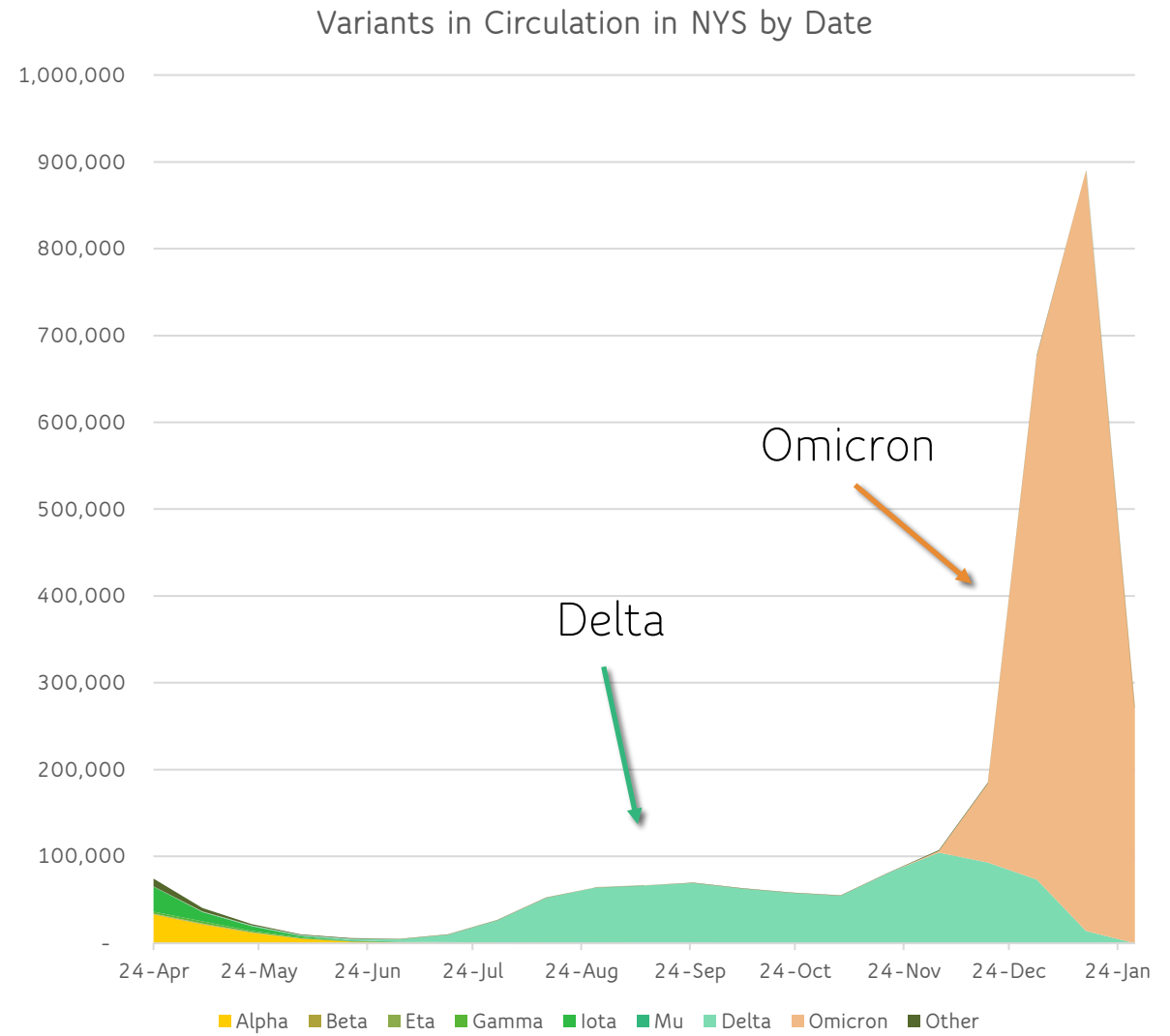
The Peak Proved To Be Real

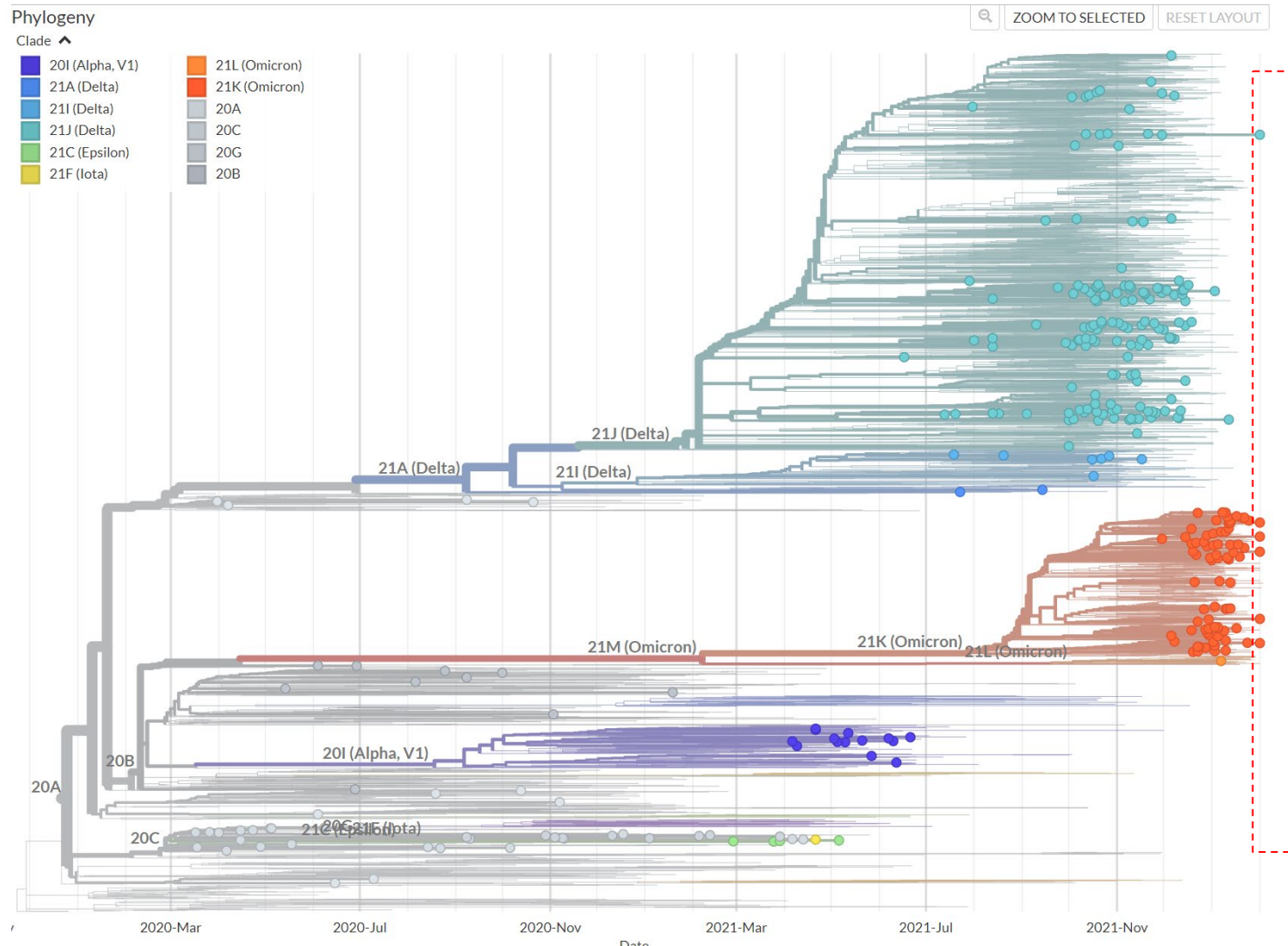
- Our hypothesis at the January BOE meeting proved accurate.
- The Omicron surge resulted in almost 4 times as many cases as the January 2021 peak;
- Since December 1, there have been over 166,000 COVID cases in Nassau County



Proportion of Cases by Variant

- Most of the surge is due to Omicron;
- Omicron and Delta circulated simultaneously;
- Delta appears to no longer circulate in NYS



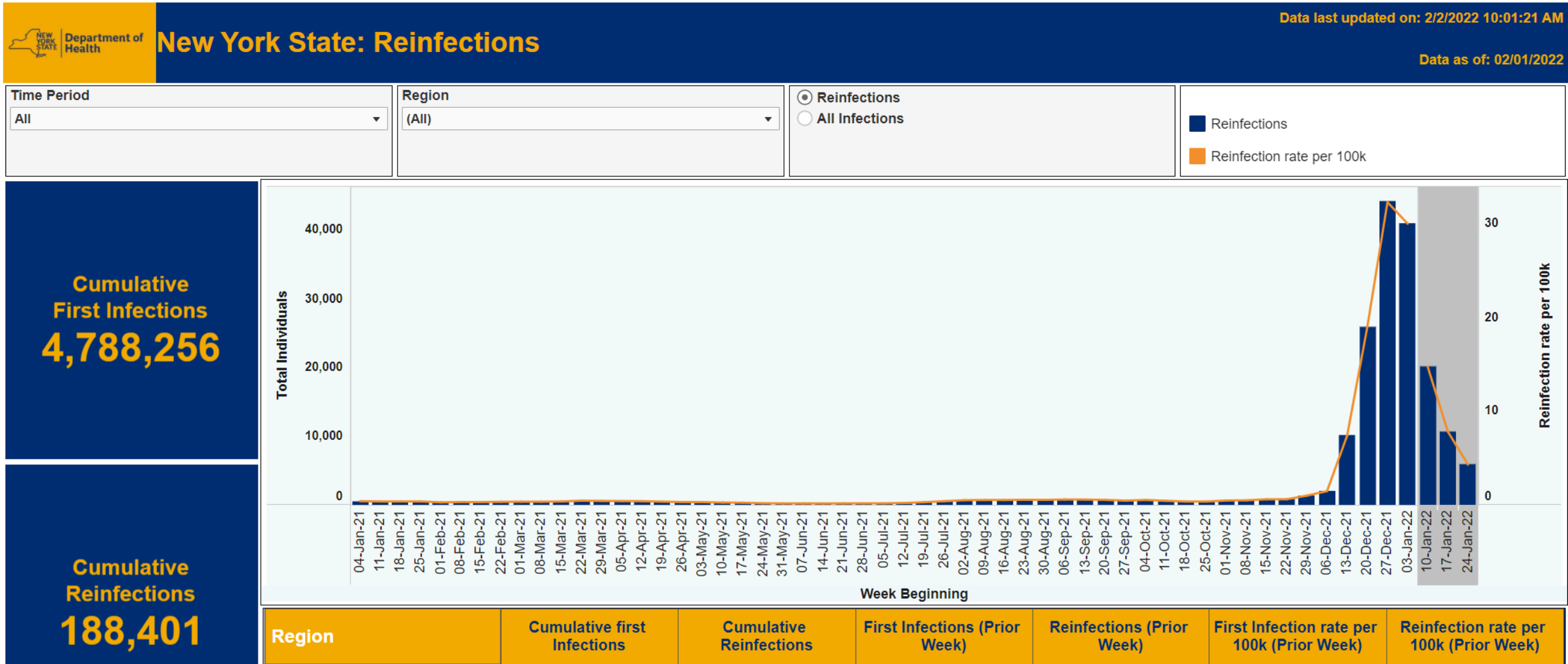


Are there other variants?

COVID "family tree"

- Dots furthest right represent variants still circulating in USA.
- Nearly all other variants except Omicron are no longer present.
- There are several Omicron variant lineages circulating.
- Only Omicron circulating in NYS ([according to NYSDOH](#))
- Additional variants remain present worldwide.

Reinfection Was Rare Until Omicron



Omicron has fewer severe outcomes than Delta

STUDY OF AGES 5 AND UNDER

Outcomes	Omicron	Delta
ED visits	18.83%	26.67%
Hospitalizations	1.04%	3.14%
ICU admissions	0.14%	0.43%
Mechanical ventilation	0.33%	1.15%

STUDY OF AGES 18 AND UNDER

Outcomes	Omicron	Delta
ED visits	4.55%	15.22%
Hospitalizations	1.75%	3.95%
ICU admissions	0.26%	0.78%
Mechanical ventilation	0.07%	0.43%

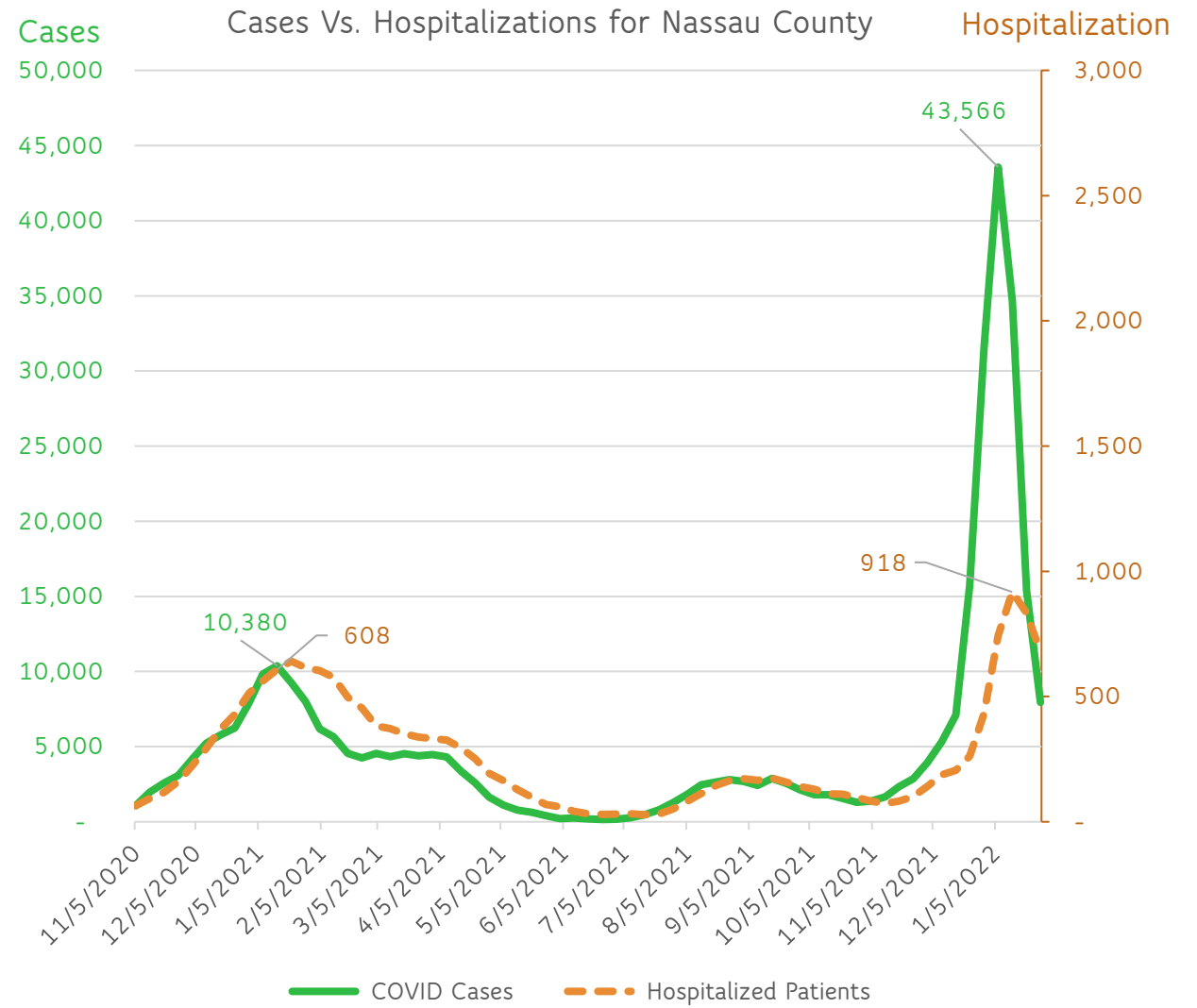
<https://www.medrxiv.org/content/10.1101/2022.01.12.22269179v1.full.pdf>

<https://www.medrxiv.org/content/10.1101/2021.12.30.21268495v1>

Omicron Less Likely to Result in Hospitalization

Omicron produced:

- 400% increase in cases;
- 50% increase in hospitalizations.



Context (Where are we now?)

OMICRON IS (STILL) SIGNIFICANT

Syosset School District

- 574 cases all last year ('20-'21)
- Over 1,700 cases half-way through '21-'22

Nassau

- 166,000 new COVID cases in Nassau County since December 1.
- Cases have fallen from 450 per 100K to 34!
 - Now comparable to Delta peak of 30 per 100K (8/31/21)
 - Still... 8,700 cases in the last 2 weeks vs. 6,900 cases in the entire month of October 2021.

WE'RE IN A BETTER PLACE THAN SPRING 2021

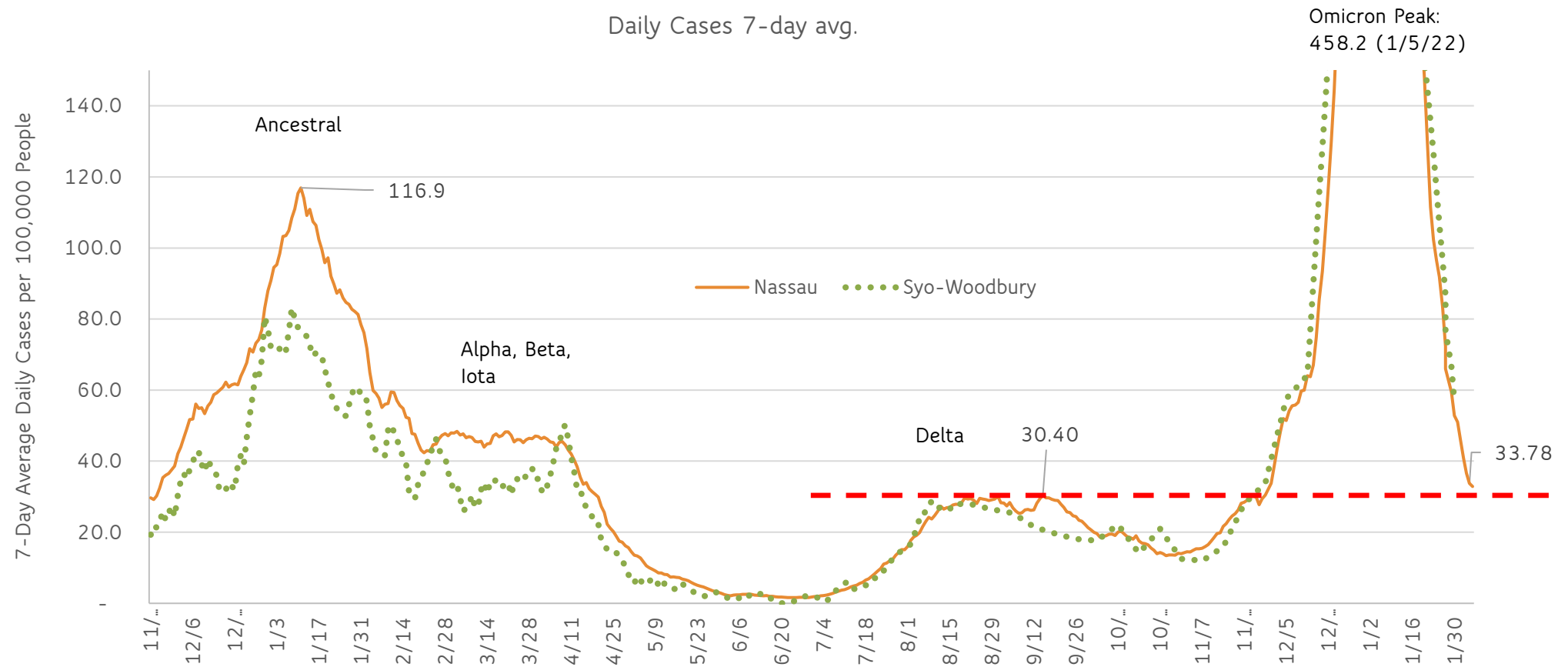
Vaccination (Nassau, First Dose - 2/5/22)

- Age 18+: 20% (3/4/21) vs. 99%
- 12-17 years old: 0% vs. 82.8%
- 5-11 years old: 0% vs. 39.2%

Health Care

- Better therapeutics;
- Better access to testing and rapid tests;
- Less severe outcomes (with Omicron);

Case Counts Still Comparable to Delta Peak



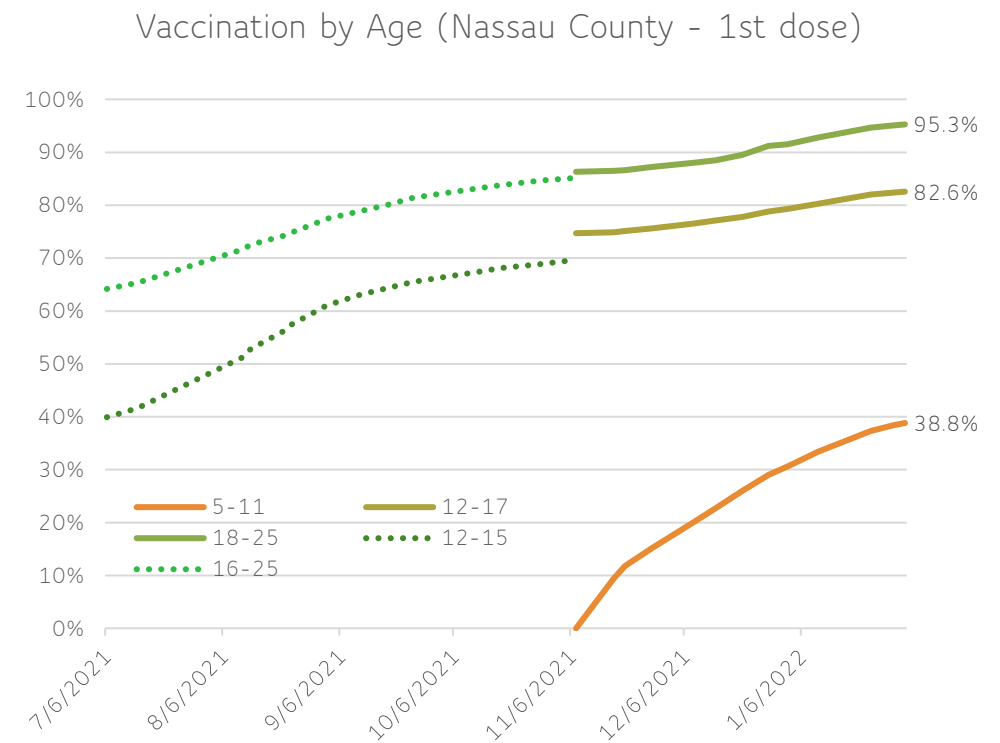
Working Back to “Normal”

- Elementary
 - Elementary/Middle school science labs
 - Hands-on robotics
 - Shared elementary school playground equipment
 - Shared art supplies
 - Lunch in the lunchrooms/cafeterias @six feet
 - Book Fair
 - Early morning performing groups
 - Early morning extra help sessions
 - 5th grade class photos
 - Kindergarten Welcome/Orientation
 - End virtual at elementary
 - Extra help- elementary
 - Recess enrichment opportunities- elementary
 - Small group instruction
 - Elementary Clubs
- Middle School
 - MS moving from class to class (no more cohort restrictions)
 - MS 9 period day
 - Cooking in FCS
 - Book Fair
 - MS Moving Up
 - Middle School movies/parties/activities after school
 - Use of lockers
 - MS Fall Drama performance (2 spectators per child)
 - Shortly: In person middle school Arts in Ed assembly
 - Middle school clubs in person
 - Middle School Tech Labs
- District/All
 - Remove plexiglass from desks
 - ICT Consultant in person
 - Athletics
 - Restarted mid-year 20-21
 - Full seasons 2021-22
 - Spectators
 - Visitor spectators
 - Use of Facilities by outside groups
 - Student/College Observers back in person
 - Teachers College in-person staff developers working directly alongside teachers and students to advance literacy instruction K-8
 - Outdoor mask mandate made optional
 - Music lessons and concerts restored
 - 5-day quarantines and isolations (vs. 10-day)
- High School
 - End hybrid at SHS - all-in every day
 - HS Clubs in person
 - Physics Pumpkin Drop
 - Jr. Day
 - Spirit Week
 - Pep Rally
 - Carnival
 - Walkathons
 - Use of lockers
 - Live theater in HS–student productions–main stage production–musical
 - 9th grade orientation–in person in high school (including 10th grade kids who were virtual the year before)
 - Some in-person speech/forensics competitions this year including one hosted at SHS
 - AAPPL WL Testing

Future Considerations

February Break – May result in increased spread as a result of travel.

Lower Vaccination – Levels of vaccination among elementary students remain lower than secondary students.



Looking Ahead

ELEMENTARY UPDATES

- In-person activities for elementary families being planned once the weather improves,
- In-person Kindergarten and new (elementary) parent orientations,
- Activities planned to recognize our “graduating” 5th graders,
- “Drop-off” of forgotten music instruments, etc.
- Second “pick-up” person at elementary.

SECONDARY UPDATES

- Changes to indoor athletic spectator limitations.
- Waiting for State Guidance on graduations (arrived April last year)

Rapid Test Availability

- First round rapid tests expiration date extended.
- Supplies of new rapid tests are now ample.
- Parents who plan to travel over February break should secure sufficient tests for the family.

