

Inspiring World-Class Academic Achievement



Elementary Student-Parent Handbook 2024-2025

2024-2025 Academic School Year Calendar

Wooster City School District 2024-2025 Academic Calendar

<div><div>AUGUST 2024</div><table><tr><th>S</th><th>M</th><th>T</th><th>W</th><th>Th</th><th>F</th><th>S</th></tr><tr><td></td><td></td><td></td><td></td><td>1</td><td>2</td><td>3</td></tr><tr><td>4</td><td>5</td><td>6</td><td>7</td><td>8</td><td>9</td><td>10</td></tr><tr><td>11</td><td>12</td><td>13</td><td>14</td><td>15</td><td>16</td><td>17</td></tr><tr><td>18</td><td>19</td><td>20</td><td>21</td><td>22</td><td>23</td><td>24</td></tr><tr><td>25</td><td>26</td><td>27</td><td>28</td><td>29</td><td>30</td><td>31</td></tr></table></div>	S	M	T	W	Th	F	S					1	2	3	4	5	6	7	8	9	10	11	12	13	14	15	16	17	18	19	20	21	22	23	24	25	26	27	28	29	30	31	<div>Aug. 12: New Staff Orientation</div> <div>Aug. 15: Staff Convocation</div> <div>Aug. 16, 19: PD Days</div> <div>Aug. 20: Teacher Work Day</div> <div>Aug. 21: First Day for Students</div>							
S	M	T	W	Th	F	S																																												
				1	2	3																																												
4	5	6	7	8	9	10																																												
11	12	13	14	15	16	17																																												
18	19	20	21	22	23	24																																												
25	26	27	28	29	30	31																																												
<div><div>OCTOBER 2024</div><table><tr><th>S</th><th>M</th><th>T</th><th>W</th><th>Th</th><th>F</th><th>S</th></tr><tr><td></td><td></td><td>1</td><td>2</td><td>3</td><td>4</td><td>5</td></tr><tr><td>6</td><td>7</td><td>8</td><td>9</td><td>10</td><td>11</td><td>12</td></tr><tr><td>13</td><td>14</td><td>15</td><td>16</td><td>17</td><td>18</td><td>19</td></tr><tr><td>20</td><td>21</td><td>22</td><td>23</td><td>24</td><td>25</td><td>26</td></tr><tr><td>27</td><td>28</td><td>29</td><td>30</td><td>31</td><td></td><td></td></tr></table></div>	S	M	T	W	Th	F	S			1	2	3	4	5	6	7	8	9	10	11	12	13	14	15	16	17	18	19	20	21	22	23	24	25	26	27	28	29	30	31			<div>Oct. 17: End of the First Quarter (Grades 5-12) (40 days)</div> <div>Oct. 18: No School – PD Day</div>							
S	M	T	W	Th	F	S																																												
		1	2	3	4	5																																												
6	7	8	9	10	11	12																																												
13	14	15	16	17	18	19																																												
20	21	22	23	24	25	26																																												
27	28	29	30	31																																														
<div><div>DECEMBER 2024</div><table><tr><th>S</th><th>M</th><th>T</th><th>W</th><th>Th</th><th>F</th><th>S</th></tr><tr><td>1</td><td>2</td><td>3</td><td>4</td><td>5</td><td>6</td><td>7</td></tr><tr><td>8</td><td>9</td><td>10</td><td>11</td><td>12</td><td>13</td><td>14</td></tr><tr><td>15</td><td>16</td><td>17</td><td>18</td><td>19</td><td>20</td><td>21</td></tr><tr><td>22</td><td>23</td><td>24</td><td>25</td><td>26</td><td>27</td><td>28</td></tr><tr><td>29</td><td>30</td><td>31</td><td></td><td></td><td></td><td></td></tr></table></div>	S	M	T	W	Th	F	S	1	2	3	4	5	6	7	8	9	10	11	12	13	14	15	16	17	18	19	20	21	22	23	24	25	26	27	28	29	30	31					<div>Dec. 20: End of Second Quarter (Grades 5-12) (41 Days)</div> <div>Dec. 23-31: No School – Winter Break</div>							
S	M	T	W	Th	F	S																																												
1	2	3	4	5	6	7																																												
8	9	10	11	12	13	14																																												
15	16	17	18	19	20	21																																												
22	23	24	25	26	27	28																																												
29	30	31																																																
<div><div>FEBRUARY 2025</div><table><tr><th>S</th><th>M</th><th>T</th><th>W</th><th>Th</th><th>F</th><th>S</th></tr><tr><td></td><td></td><td></td><td></td><td></td><td></td><td>1</td></tr><tr><td>2</td><td>3</td><td>4</td><td>5</td><td>6</td><td>7</td><td>8</td></tr><tr><td>9</td><td>10</td><td>11</td><td>12</td><td>13</td><td>14</td><td>15</td></tr><tr><td>16</td><td>17</td><td>18</td><td>19</td><td>20</td><td>21</td><td>22</td></tr><tr><td>23</td><td>24</td><td>25</td><td>26</td><td>27</td><td>28</td><td></td></tr></table></div>	S	M	T	W	Th	F	S							1	2	3	4	5	6	7	8	9	10	11	12	13	14	15	16	17	18	19	20	21	22	23	24	25	26	27	28		<div>February 10 and 12: WHS PTC</div> <div>February 11 and 13: EWMS PTC</div> <div>Feb. 17: No School – President's Day</div> <div>February 24 and 26: Elementary PTC</div> <div>Feb. 28: End of Second Trimester (Grades K-4) (60 days)</div>							
S	M	T	W	Th	F	S																																												
						1																																												
2	3	4	5	6	7	8																																												
9	10	11	12	13	14	15																																												
16	17	18	19	20	21	22																																												
23	24	25	26	27	28																																													
<div><div>APRIL 2025</div><table><tr><th>S</th><th>M</th><th>T</th><th>W</th><th>Th</th><th>F</th><th>S</th></tr><tr><td></td><td></td><td>1</td><td>2</td><td>3</td><td>4</td><td>5</td></tr><tr><td>6</td><td>7</td><td>8</td><td>9</td><td>10</td><td>11</td><td>12</td></tr><tr><td>13</td><td>14</td><td>15</td><td>16</td><td>17</td><td>18</td><td>19</td></tr><tr><td>20</td><td>21</td><td>22</td><td>23</td><td>24</td><td>25</td><td>26</td></tr><tr><td>27</td><td>28</td><td>29</td><td>30</td><td></td><td></td><td></td></tr></table></div>	S	M	T	W	Th	F	S			1	2	3	4	5	6	7	8	9	10	11	12	13	14	15	16	17	18	19	20	21	22	23	24	25	26	27	28	29	30				<div>Apr. 18: No School – PTC Release Day</div>							
S	M	T	W	Th	F	S																																												
		1	2	3	4	5																																												
6	7	8	9	10	11	12																																												
13	14	15	16	17	18	19																																												
20	21	22	23	24	25	26																																												
27	28	29	30																																															
<div><div>JUNE 2025</div><table><tr><th>S</th><th>M</th><th>T</th><th>W</th><th>Th</th><th>F</th><th>S</th></tr><tr><td>1</td><td>2</td><td>3</td><td>4</td><td>5</td><td>6</td><td>7</td></tr><tr><td>8</td><td>9</td><td>10</td><td>11</td><td>12</td><td>13</td><td>14</td></tr><tr><td>15</td><td>16</td><td>17</td><td>18</td><td>19</td><td>20</td><td>21</td></tr><tr><td>22</td><td>23</td><td>24</td><td>25</td><td>26</td><td>27</td><td>28</td></tr><tr><td>29</td><td>30</td><td></td><td></td><td></td><td></td><td></td></tr></table></div>	S	M	T	W	Th	F	S	1	2	3	4	5	6	7	8	9	10	11	12	13	14	15	16	17	18	19	20	21	22	23	24	25	26	27	28	29	30						<div>June 2-4: Make-up Days 3-5</div>							
S	M	T	W	Th	F	S																																												
1	2	3	4	5	6	7																																												
8	9	10	11	12	13	14																																												
15	16	17	18	19	20	21																																												
22	23	24	25	26	27	28																																												
29	30																																																	
<div><div>SEPTEMBER 2024</div><table><tr><th>S</th><th>M</th><th>T</th><th>W</th><th>Th</th><th>F</th><th>S</th></tr><tr><td>1</td><td>2</td><td>3</td><td>4</td><td>5</td><td>6</td><td>7</td></tr><tr><td>8</td><td>9</td><td>10</td><td>11</td><td>12</td><td>13</td><td>14</td></tr><tr><td>15</td><td>16</td><td>17</td><td>18</td><td>19</td><td>20</td><td>21</td></tr><tr><td>22</td><td>23</td><td>24</td><td>25</td><td>26</td><td>27</td><td>28</td></tr><tr><td>29</td><td>30</td><td></td><td></td><td></td><td></td><td></td></tr></table></div>	S	M	T	W	Th	F	S	1	2	3	4	5	6	7	8	9	10	11	12	13	14	15	16	17	18	19	20	21	22	23	24	25	26	27	28	29	30						<div>Sept. 2: No School – Labor Day</div> <div>Sept. 9: No School – Fair Day</div> <div>Sept. 13: Preschool Day of Attendance</div>							
S	M	T	W	Th	F	S																																												
1	2	3	4	5	6	7																																												
8	9	10	11	12	13	14																																												
15	16	17	18	19	20	21																																												
22	23	24	25	26	27	28																																												
29	30																																																	
<div><div>NOVEMBER 2024</div><table><tr><th>S</th><th>M</th><th>T</th><th>W</th><th>Th</th><th>F</th><th>S</th></tr><tr><td></td><td></td><td></td><td></td><td></td><td>1</td><td>2</td></tr><tr><td>3</td><td>4</td><td>5</td><td>6</td><td>7</td><td>8</td><td>9</td></tr><tr><td>10</td><td>11</td><td>12</td><td>13</td><td>14</td><td>15</td><td>16</td></tr><tr><td>17</td><td>18</td><td>19</td><td>20</td><td>21</td><td>22</td><td>23</td></tr><tr><td>24</td><td>25</td><td>26</td><td>27</td><td>28</td><td>29</td><td>30</td></tr></table></div>	S	M	T	W	Th	F	S						1	2	3	4	5	6	7	8	9	10	11	12	13	14	15	16	17	18	19	20	21	22	23	24	25	26	27	28	29	30	<div>November 11 and 12: WHS PTC</div> <div>November 11 and 13: Elementary PTC</div> <div>November 12 and 13: EWMS PTC</div> <div>Nov. 14: End of First Trimester (Grades K-4) (59 days)</div> <div>Nov. 15: No School – Release Day for PTC</div> <div>Nov. 27-29: No School – Thanksgiving Break</div>							
S	M	T	W	Th	F	S																																												
					1	2																																												
3	4	5	6	7	8	9																																												
10	11	12	13	14	15	16																																												
17	18	19	20	21	22	23																																												
24	25	26	27	28	29	30																																												
<div><div>JANUARY 2025</div><table><tr><th>S</th><th>M</th><th>T</th><th>W</th><th>Th</th><th>F</th><th>S</th></tr><tr><td></td><td></td><td></td><td>1</td><td>2</td><td>3</td><td>4</td></tr><tr><td>5</td><td>6</td><td>7</td><td>8</td><td>9</td><td>10</td><td>11</td></tr><tr><td>12</td><td>13</td><td>14</td><td>15</td><td>16</td><td>17</td><td>18</td></tr><tr><td>19</td><td>20</td><td>21</td><td>22</td><td>23</td><td>24</td><td>25</td></tr><tr><td>26</td><td>27</td><td>28</td><td>29</td><td>30</td><td>31</td><td></td></tr></table></div>	S	M	T	W	Th	F	S				1	2	3	4	5	6	7	8	9	10	11	12	13	14	15	16	17	18	19	20	21	22	23	24	25	26	27	28	29	30	31		<div>Jan. 1-3: No School – Winter Break</div> <div>Jan. 6: School resumes</div> <div>Jan. 20: No School – Martin Luther King, Jr. Day</div>							
S	M	T	W	Th	F	S																																												
			1	2	3	4																																												
5	6	7	8	9	10	11																																												
12	13	14	15	16	17	18																																												
19	20	21	22	23	24	25																																												
26	27	28	29	30	31																																													
<div><div>MARCH 2025</div><table><tr><th>S</th><th>M</th><th>T</th><th>W</th><th>Th</th><th>F</th><th>S</th></tr><tr><td></td><td></td><td></td><td></td><td></td><td></td><td>1</td></tr><tr><td>2</td><td>3</td><td>4</td><td>5</td><td>6</td><td>7</td><td>8</td></tr><tr><td>9</td><td>10</td><td>11</td><td>12</td><td>13</td><td>14</td><td>15</td></tr><tr><td>16</td><td>17</td><td>18</td><td>19</td><td>20</td><td>21</td><td>22</td></tr><tr><td>23</td><td>24</td><td>25</td><td>26</td><td>27</td><td>28</td><td>29</td></tr><tr><td>30</td><td>31</td><td></td><td></td><td></td><td></td><td></td></tr></table></div>	S	M	T	W	Th	F	S							1	2	3	4	5	6	7	8	9	10	11	12	13	14	15	16	17	18	19	20	21	22	23	24	25	26	27	28	29	30	31						<div>Mar. 14: End of the Third Quarter (Grades 5-12) (48 Days)</div> <div>March 24-28: No School – Spring Break</div>
S	M	T	W	Th	F	S																																												
						1																																												
2	3	4	5	6	7	8																																												
9	10	11	12	13	14	15																																												
16	17	18	19	20	21	22																																												
23	24	25	26	27	28	29																																												
30	31																																																	
<div><div>MAY 2025</div><table><tr><th>S</th><th>M</th><th>T</th><th>W</th><th>Th</th><th>F</th><th>S</th></tr><tr><td></td><td></td><td></td><td></td><td>1</td><td>2</td><td>3</td></tr><tr><td>4</td><td>5</td><td>6</td><td>7</td><td>8</td><td>9</td><td>10</td></tr><tr><td>11</td><td>12</td><td>13</td><td>14</td><td>15</td><td>16</td><td>17</td></tr><tr><td>18</td><td>19</td><td>20</td><td>21</td><td>22</td><td>23</td><td>24</td></tr><tr><td>25</td><td>26</td><td>27</td><td>28</td><td>29</td><td>30</td><td>31</td></tr></table></div>	S	M	T	W	Th	F	S					1	2	3	4	5	6	7	8	9	10	11	12	13	14	15	16	17	18	19	20	21	22	23	24	25	26	27	28	29	30	31	<div>May 18: Graduation Day</div> <div>May 26: No School - Memorial Day</div> <div>May 28: Last Day for Students End of the Fourth Quarter (46 Days) and End of the Third Trimester (56 Days)</div> <div>May 29: Teacher Work Day or Make-up Day 1</div> <div>May 30: Teacher Work Day or Make-up Day 2</div>							
S	M	T	W	Th	F	S																																												
				1	2	3																																												
4	5	6	7	8	9	10																																												
11	12	13	14	15	16	17																																												
18	19	20	21	22	23	24																																												
25	26	27	28	29	30	31																																												
<div><div>Calamity Days:</div><div>Five (5) calamity days are permitted before the first make-up day is used for Grades K-12.</div><div>Littiest Generals Preschool must make up all missed days.</div><div>BOE Approved: January 22, 2024</div></div>	<div>School Year Days Converted to Hours:</div> <div>Littiest Generals Preschool 456 hours (455 State Minimum) No school on Fridays, with the exception of 09/13/2024</div> <div>Elementary School (Gr. K-4) – 9:05 am to 3:30 pm 1049.6 hours (910 State Minimum)</div> <div>Middle School (Gr. 5-7) – 7:50 am to 2:19 pm 1069.6 hours (910 State Minimum Gr. 5-6) (1001 State Minimum Gr. 7-12)</div> <div>High School (Gr. 8-12) – 8:05 am to 2:33 pm 1066.6 hours (1001 State Minimum Gr. 7-12)</div>																																																	

CENTRAL OFFICE AND ADMINISTRATIVE STAFF

Board of Education

School board meetings are usually held on the fourth Tuesday of each month. The public is invited. You may access Wooster Board of Education policies and calendar at www.woostercityschools.org.

144 N. Market Street, Wooster, Ohio 44691
330-988-1111

Gabe Tudor, Superintendent
Amy Welty, Treasurer
Molly Richard, Director of Curriculum and Instruction
Brian Madigan, Assistant Superintendent
Diana McMillen, Director of Student Services
Brittany Grimshaw, Student Service Coordinator
Alicia Klaameyere, Board Certified Behavior Analyst
Alex Garey, Director of Technology
Shannon Federinko, Director of Communication and Compliance
Sara Crooks, Secondary Curriculum Coordinator
Joslyn Chenevey, Elementary Curriculum Coordinator

CORNERSTONE ELEMENTARY

101 W. Bowman Street
Eric Vizzo, Principal
Katie Roth, Admin. Intern
330-988-1111, ext. 4005

KEAN ELEMENTARY

432 Oldman Road
Gabrielle Montgomery, Principal
330-988-1111, ext. 5550

MELROSE ELEMENTARY

1641 Sunset Lane
Jayme Tucker, Principal
330-988-1111, ext. 3500

PARKVIEW ELEMENTARY

773 Parkview Street
330-988-1111, ext. 4500
Steve Furlong, Principal

EDGEWOOD MIDDLE SCHOOL

2965 Graustark Path
Heidi Haas, Principal
C.J. Spreng, Assistant Principal
Jeff Spitler, Dean of Students

WOOSTER HIGH SCHOOL

515 Oldman Road
Scott Musser, Principal
Jessica Shaffner, Associate Principal
Margaret Davis, Associate Principal
Jason Douglas, Assistant Principal
330-988-1111, ext. 3001

TRANSPORTATION

1494 Old Mansfield Road
Laurie Sizemore, Transportation Supervisor
330-988-1111, ext. 1601

FOOD SERVICE

515 Oldman Road
Greg Krone, Manager
330-988-1111, ext. 3021

This student/parent handbook is based in significant part on policies adopted by the Board of Education and administrative guidelines developed by the superintendent. These policies and guidelines are incorporated by reference into the provisions of this handbook. The policies and administrative guidelines are periodically updated in response to changes in the law and other circumstances. Therefore, there may have been changes to the documents reviewed in this handbook since it was printed. If you have questions or would like more information about a specific issue or document, contact your school principal or access the document on the district's website, <http://www.woostercityschools.org>, and click on "Board of Education" and "Board Policies and Guidelines" and find the specific policy or administrative guideline in the table of contents for that section.

Welcome to Wooster City Schools. We are pleased to have you as a student and will do our best to help make your experience here as enjoyable and successful as you wish it to be. To help provide a safe and productive learning environment for students, staff, parents, and visitors, the Board of Education publishes this updated student/parent handbook annually to explain students' rights, responsibilities, and consequences for misbehavior.

Parents should review and discuss the information in this handbook with their school-age children. Teachers will also review this handbook with students at the beginning of the school year.

Thank you for taking the time to become familiar with the important information in this handbook. If you have any questions, please contact the principal.

Mr. Steve Furlong, Principal
330-988-1111 ext. 4550
wstr_sfurlong@woostercityschools.org

Mrs. Beth Jewell, School Secretary
330-988-1111 ext. 4500
wstr_bjewell@woostercityschools.org

Adopted by the Board of Education in May 2024.

Student Code of Conduct (including Student Discipline Code) adopted by the Board of Education, January 2016.

Wooster City Schools

Equal Education Opportunity

This district provides an equal educational opportunity for all students.

Any person who believes that s/he has been discriminated against on the basis of his/her race, color, disability, religion, gender, or national origin while at school or a school activity should immediately contact the school district's Civil Rights Compliance Officer, the Director of Elementary Education, at 330-988-1111 ext. 1240.

School Day

The elementary school day for students begins at 9:05am and ends at 3:30 pm.

Student Responsibilities

The school's rules and procedures are designed to allow students to be educated in a safe and orderly environment. All students are expected to follow staff members' directions and to obey all school rules.

Students must arrive at school on time, prepared to learn and participate.

In order to keep parents informed of their child's progress in school, parents will be provided information on a regular basis. Many times it will be the responsibility of the student to deliver the information. Parents are encouraged to build a two-way link with their child's teachers and support staff by informing the staff of suggestions or concerns that may help their child better accomplish his/her educational goals.

Student Well-being

Student safety is the responsibility of families, students, and staff. Staff members are familiar with emergency procedures such as evacuation procedures, fire and tornado drills, safety drills in the event of a terrorist or other violent attack, and accident reporting procedures. If a student is aware of any dangerous situation or accident, s/he must notify a staff person immediately.

State law requires that all students have a current emergency medical authorization completed and signed by a parent or guardian on file in the school office.

Students with specific health care needs should deliver written notice about such needs, along with physician documentation, to the school office.

Injury and Illness

All injuries must be reported to a staff member or the office. If the injuries are minor, the student will be treated and may return to class. If medical attention is required, the office will follow the emergency procedures as outlined on the emergency medical form and attempt to make contact with the student's parents.

A student who becomes ill during the school day should request permission to go to the office. An appropriate adult in the office will determine whether the student should remain in school or go home. No student will be released from school without proper parental permission.

Head Lice prevention and control:

To prevent the spread of this nuisance disease to other children while attending Wooster City Schools we ask that parents check their children regularly especially if excessive itching of the scalp is observed. The school nurse and trained staff members will complete periodic head checks at school. Children initially identified with live head lice will be sent home with a parent or guardian for treatment. Children who cannot be sent home will remain in the school clinic. If only nits are found, the child will remain in school with teacher and parent notification. Nit removal will be monitored. Children are expected to return to school no later than the morning after the initial identification, treatment, and removal of nits. The child should bring the tear-off portion of the lice identification letter completed, including parent/guardian signature, as well as the product label. Children who return to school with evidence of treatment and nit removal improvement/progress noted upon recheck by trained personnel, will remain in school and encouraged to retreat in 7-10 days after initial treatment. If you have questions, please call your school's medical assistant.



Health Guidelines for School Attendance

Should I keep my child home or send him or her to school?

Do not send your child to school if any of the following symptoms or conditions were present in the last 24 hours. You may be asked to take your child home if your child:

- **Has a fever of 100 degrees or higher-** Your child may return to school when the temperature has been normal (98.6) for 24 hours *without the help of medication*.
- **Has been vomiting-** If your child has two or more episodes during the previous 24 hours, unless vomiting is determined to be caused by a non-communicable condition and the student is able to remain hydrated and participate in school activities
- **Has diarrhea-**Two or more stools above normal for student, medical evaluation required for stools with blood or mucus, readmission after diarrhea can occur after the following conditions are met:
 1. Diapered children must have their stool contained by the diaper, even if the stool remains loose.
 2. Toilet trained children do not have toileting accidents.
 3. Healthcare provider has cleared child for readmission for all cases of bloody diarrhea and diarrhea caused by Shigella, Salmonella Yersinia, Clostridium Difficile, Cryptosporidium, Campylobacter, E. Coli, Rotavirus/Norovirus, and Giardia Intestinalis
- **Rash with fever-**May return to school after medical evaluation has determined not to be communicable. Rash without fever must not fit the description of communicable diseases on the Ohio Department of Health Communicable Disease Chart that require exclusion. The ODH chart will also be referenced for return to school criteria.
- **Strep Throat-**May return to school after taking prescribed antibiotics for 24 hours.
- **Scabies or other parasite infections-**May return to school following the guidelines of the Ohio Department of Health and/or after treatment and clearance by healthcare provider.
- **No live lice-**After treatment and upon returning to school, the child will be examined by school health staff.
- **Possible Pink eye-**Purulent drainage from the eye(s) does not improve when any discharge that is present is wiped from eye(s). If the child complains of eye pain with redness, has eyelid redness and/or fever, the child should see a healthcare provider. If an antibiotic is prescribed, the child must be on the medication for 24 hours before returning to school.
- **Untreated infected skin patches with weeping fluid**
- **Mouth sores-**with drooling that the child cannot control.
- **Abdominal pain-**that continues for more than 2 hours or intermittent pain associated with fever or other signs or symptoms.
- **Has symptoms-**that prevent him or her from participating in school, such as:
 - excessive tiredness, pale, difficult to wake, confused or irritable, lack of appetite
 - productive coughing, sneezing
 - continuous coughing

Section I – General Information

Enrolling in the School

State law requires students to enroll in the school district in which their parent or legal guardian resides.

New students under the age of 18 must be enrolled by their parent or legal guardian. When enrolling, parents must provide copies of the following:

- A. A birth certificate or similar document
- B. Court papers allocating parental rights and responsibilities, or custody (if appropriate)
- C. Proof of residency
- D. Proof of immunizations

Under certain circumstances, temporary enrollment may be permitted in such cases, parents will be notified about documentation required to establish permanent enrollment.

Students enrolling from another school must have an official transcript from their previous school in order to have credits transferred. Central office administration will assist in obtaining the transcript if not presented at the time of enrollment.

Homeless students who meet the federal definition of homeless may enroll and will be under the direction of the Director of Elementary Education, with regard to enrollment procedures.

If a new student resides in the district with a grandparent and is the subject of a: (1) power of attorney designating the grandparent as the attorney-in-fact; or (2) a caretaker authorization affidavit executed by the grandparent that provides the grandparent with authority over the care, physical custody and control of the child, including the ability to enroll the child in school, consent in all school related matters, and discuss with the district the child's educational progress, the student's grandparent may enroll the child in school on a tuition-free basis. However, in addition to the above referenced documents that are typically required for enrollment, the grandparent must provide the district with a duly executed and notarized copy of a power of attorney or caretaker authorization affidavit.

A student suspended or expelled by another public school in Ohio may be temporarily denied admission to the district's schools during the period of suspension or expulsion even if that student would otherwise be entitled to attend school in the district. Likewise, a student who has been expelled or otherwise removed for disciplinary purposes from a public school in another state and the period of expulsion or removal has not expired, may be temporarily denied admission to the district's schools during the period of expulsion or removal or until the expiration of the period of expulsion or removal which the student would have received in the district had the student committed the offense while enrolled in the district. Prior to denying admission, however, the superintendent shall offer the student an opportunity for a hearing to review the circumstances of the suspension or expulsion and any other factors the superintendent determines to be relevant.

Kindergarten Entrance

Any child who is to be enrolled in kindergarten must be five on or before August 1st. Kindergarten is compulsory in the state of Ohio. Just because a child reaches the age of 5 does not mean that she/he must

go to kindergarten. Parents have the right to hold their child back an additional year and send her/him to kindergarten the following year. In some situations, this is a wise decision. Kindergarten registration is held citywide in the spring. If you have any questions, please contact your building principal.

Scheduling and Assignment

The principal will assign each student to the appropriate classroom and program. Any questions or concerns about the assignment should be discussed with the principal.

Early Dismissal

No student will be allowed to leave school prior to dismissal time without a phone call, written request signed by the parent/guardian or the parent/guardian coming to the school office personally to request the release. No student will be released to a person other than a custodial parent(s) or guardian without permission signed by the custodial parent(s) or guardian.

Withdrawal/Transfer from School

Parents must notify the principal about plans to transfer their child to another school. School records will be transferred to the new school within 14 days of the new school's request.

Immunizations

Students must be current with all immunizations required by law including, but not limited to; poliomyelitis, measles, diphtheria, rubella, pertussis, tetanus, and mumps, or have an authorized exemption from state immunization requirements. For the safety of all students, the school principal may remove a student from school or establish a deadline for meeting state requirements if a student does not have the necessary immunizations or authorized exemption. In the event of a chicken pox epidemic, the superintendent may temporarily deny admission to any student otherwise exempted from the chicken pox immunization requirement. Any questions about immunizations or exemptions should be directed to the elementary district RN.

Emergency Medical Authorization

A complete emergency medical authorization form must be on file with the school in order for a student to participate in any activity on or off school grounds including field trips, spectator trips, athletic and other extracurricular activities, and co-curricular activities. The emergency medical authorization form is provided at the time of enrollment and at the beginning of each school year.

Use of Medications

Students who must take prescribed medication during the school day must comply with the following guidelines:

- A. The appropriate form must be filed with the respective building's clinic before the student will be allowed to begin taking any medication during school hours or to use an inhaler to self-administer asthma medication. Such forms must be filed annually and as necessary for any change in the medication.

- B. All medications must be registered with the clinic and must be delivered to school in the original containers in which they were dispensed by the prescribing physician or licensed pharmacist, labeled with the date, the student's name, and the exact dosage to be administered.
- C. Medication that is brought to the clinic will be properly secured. Medication must be delivered to the clinic by the student's parent or guardian or by another responsible adult at the parent or guardian's request. Except as noted below, students may not bring medication to school.

Students may carry emergency medications for allergic reactions and/or asthma during school hours provided the student has written permission from a parent **and** physician and has submitted the proper forms. In the case of epinephrine auto-injectors ("epi-pens"), in addition to written permission and submission of proper forms, the parent must provide a back-up dose to the school clinic. Students are strictly prohibited from transferring emergency medication, Epi-pens, or inhalers to any other student for their use or possession.

Medication may be conveyed to school directly by the parent or transported by transportation personnel (bus driver and/or bus aide) at parental request. This should be arranged in advance.

- D. Any unused medication unclaimed by the parent will be destroyed by school personnel when a prescription is no longer to be administered or at the end of a school year.
- E. The clinic will maintain a log noting the date and time of day that administration is required. This log will be maintained along with the prescriber's written request and the parent's written release.

Non-prescribed Over-the-Counter Medications

No staff member will dispense non-prescribed, over-the-counter (OTC) medication to any student without prior parent authorization. Parents may authorize administration of a non-prescribed medication on forms that are available from the clinic. Physician authorization is not required in such cases.

If a student is found using or possessing a medication without parent authorization, the student will be brought to the school office while the student's parents are contacted for authorization. The medication will be confiscated until written authorization is received. Please note that cough drops are considered OTC medication.

Any student who distributes medication of any kind or who is found in possession of unauthorized medication is in violation of the school's code of conduct and will be disciplined in accordance with the drug use provision of the code.

A student may possess and use a metered dose inhaler or a dry powder inhaler to alleviate asthmatic symptoms or before exercise to prevent the onset of asthmatic symptoms at school or at any activity, event, or program sponsored by or in which the student's school is a participant if the appropriate form is completed and on file in the clinic.

A student who is authorized to possess and use a metered dose or dry powder inhaler may not transfer possession of any inhaler or other medication to any other student.

Control of Casual Contact Communicable Diseases

Because a school has a high concentration of people, it is necessary to take specific measures when the health or safety of the group is at risk. The school's health services staff may remove or isolate a student who has been ill or has been exposed to a communicable disease or highly transient pest such as lice.

Specific communicable diseases include diphtheria, scarlet fever, strep infections, whooping cough, mumps, measles, rubella, and other conditions indicated by the local and state health departments.

Any removal will be limited to the contagious period as specified in the school's administrative guidelines.

Control of Non-Casual Contact Communicable Diseases

The school district has an obligation to protect staff and students from non-casual contact communicable diseases. When a non-casual contact communicable disease is suspected, the student's health will be reviewed by a panel of resource people including the county health department. The school will protect the privacy of the person affected and those in contact with the affected person. Students and staff will be permitted to remain in school unless there is definitive evidence to warrant exclusion.

Non-casual contact communicable diseases include sexually transmitted diseases, AIDS, ARC (Aids Related Complex), HIV, Hepatitis B, and other diseases that may be specified by the state board of health.

As required by federal law, parents will be requested to have their child's blood checked for HIV and HBV when the child bleeds at school and students or staff members are exposed to the blood. Any testing is subject to laws protecting confidentiality.

Control of Blood-Borne Pathogens

The school district seeks to provide a safe educational environment for students and take appropriate measures to protect those students who may be exposed to bloodborne pathogens in the school environment and/or during their participation in school-related activities. While the risks of students being exposed to bloodborne pathogens may be low, students must assume that all body fluids are potentially infectious and must take precaution to follow universal procedures in order to reduce such risks and minimize and/or prevent the potential for accidental infection.

Students With Disabilities

The Americans with Disabilities Act (A.D.A.) and Section 504 of the Rehabilitation Act prohibit discrimination against individuals with a disability in any program receiving federal financial assistance. This protection applies not just to students, but also to all individuals who have access to the district's programs and facilities.

The laws define a person with a disability as anyone who:

- A. Has a mental or physical impairment that substantially limits one or more major life activities;
- B. Has a record of such an impairment; or
- C. Is regarded as having such an impairment.

The district has specific responsibilities under these two laws which include identifying, reviewing, and, if the child is determined to be eligible, affording access to appropriate educational accommodation.

Additionally, in accordance with state and federal mandates, the district seeks out, assesses, and appropriately services students with disabilities. Staff members use a comprehensive child study process to systematically screen, assess, and, if appropriate, place students in special education and related services. Students are entitled to a free appropriate public education in the 'least restrictive environment'.

A student can access special education and related services through the proper evaluation procedures. Parent involvement in this procedure is important and required by federal IDEIA, A.D.A. Section 504, and state law. Contact the Director of Pupil Services, at (330)988-1111, ext. 1229 to inquire about evaluation procedures, programs, and services.

Homeless Students

Homeless students will be provided with a free and appropriate public education in the same manner as other students served by the district. Homeless students are eligible to receive transportation services, participate in education programs for students with disabilities or limited English proficiency, participate in gifted and talented programs, and receive meals under school nutrition programs. Homeless students will not be denied enrollment based on lack of proof of residency. For additional information, contact the Director of Student Service at (330)988-1111 ext. 1223.

Student Records

The school district maintains many student records including both directory information and confidential information. (See district policy 8330).

Directory information can be provided upon request to any individual, other than a for-profit organization, even without the written consent of a parent. Parents may refuse to allow the board to disclose any or all "directory information" upon written notification to the board. For further information about the items included within the category of directory information and instructions on how to prohibit its release, parents may consult the board's annual *Family Education Rights and Privacy Act (FERPA)* notice which can be found at the school office. Other than directory information, access to all other student records is protected by FERPA and Ohio law. Except in limited circumstances as specifically defined in state and federal law, the school district is prohibited from releasing confidential education records to any outside individual or organization without the prior written consent of the parents.

Confidential records include test scores, psychological reports, behavioral data, disciplinary records, and communications with family and outside service providers. Students and parents have the right to review and receive copies of all educational records. Costs for copies of records may be charged to the parent. To review student records please provide a written notice identifying the requested student records to the school principal. You will be given an appointment with the appropriate person to answer any questions and to review the requested student records.

Parents and adult students have the right to amend a student record when they believe that any of the information contained in the record is inaccurate, misleading, or violates the student's privacy. A parent or

adult student must request the amendment of a student record in writing and if the request is denied, the parent or adult student will be informed of his/her right to a hearing on the matter.

The Family Policy Compliance Office in the U.S. Department of Education administers both FERPA and PPRA. Parents or eligible students who believe their rights have been violated may file a complaint with:

Family Policy Compliance Office
U.S. Department of Education
400 Maryland Ave, SW 20202-4605
Washington, D.C.
www.ed.gov/offices/OM/fpc

Informal inquiries may be sent to the Family Policy Compliance Office via the following email addresses:
FERPA@ED.GOV and PPRA@ED.gov

Student Fees and Fines

Students will be provided necessary textbooks for courses of instruction without cost.

Charges may be imposed for loss, damage, or destruction of school apparatus, equipment, musical instruments, library materials, textbooks, and for damage to school buildings or property. Students using school property and equipment can be fined for excessive wear and abuse of the property and equipment.

Fees may be waived in situations where there is financial hardship.
Students can avoid late fines by promptly returning borrowed materials.
Failure to pay fines, fees, or charges may result in the withholding of grades and credits.

Student Fund-Raising

Students participating in school sponsored groups and activities may solicit funds from other students, staff members, and members of the community in accordance with school guidelines.

Students may not sell any item or service in school without the prior approval of the principal. Violation of this policy may lead to disciplinary action.

Student Valuables

Students should not bring items of value to school. Items such as jewelry, expensive clothing, electronic equipment, and the like are tempting targets for theft and extortion. The school is not liable for any loss or damage to personal valuables.

Meal Service

The school participates in the national school breakfast and lunch program. Breakfast is available for \$1.35/student (\$0.30 reduced price) and lunch is available for \$2.75/student (\$0.40 reduced price). Students may also bring their own lunch to school to be eaten in the school's cafeteria/classroom. Students may leave school premises during the lunch period with a parent/guardian after being signed out of the office.

Applications for the school's free and reduced price meal program must be completed every year and can be completed online or are distributed to all students upon enrollment and/or request. For questions regarding the application please contact the Food Service Secretary Jessica Tawney, 330-988-1111 ext. 3023.

Fire, Tornado, and Safety Drills

The school complies with all fire safety laws and will conduct fire drills in accordance with state law. The school conducts tornado drills during the tornado season following procedures prescribed by the state. Teachers will provide specific instructions on how to proceed in the case of fire or tornado and will oversee the safe, prompt, and orderly evacuation of the building in such cases.

Safety drills will be conducted three times per school year. Teachers will provide specific instruction on the appropriate procedures to follow in situations where students must be secured in their building rather than evacuated. These situations can include a terrorist threat, a person in possession of a deadly weapon on school property, or other acts of violence.

Emergency Evacuation Drills (fire) will be conducted 6 times during the year, and Tornado drills will be conducted 1x month during the months of April-May-June.

Emergency Closing and Delays

If the school must be closed or the opening delayed because of inclement weather or other conditions, the school will notify the following radio and television stations:

TV channels: CBS, NBC, ABC, WUAB, FOX,

Radio channels: FM radio station WQKT 104.5, or AM stations WTAM 1100 or WKVX 960. Please avoid calling the school or bus garage unless it is an emergency.

Information concerning school closings or delays can also be found on the school's web page at www.woostercityschools.org

Parents will be notified of school closings or delays via a pre-recorded telephone message delivered to the phone number on file. To add/delete/update emergency contact numbers parents can go to the communication button on the left side of the WCS Home Page and update their Parent Portal Information.

Preparedness for Toxic and Asbestos Hazards

The school is concerned for the safety of students and attempts to comply with all federal and state laws and regulations to protect students from hazards that may result from industrial accidents beyond the control of school officials or from the presence of asbestos materials used in previous construction. A copy of the school district's "Preparedness for Toxic Hazard and Asbestos Hazard Policy" and asbestos management plan is available for inspection at the board offices upon request.

Visitors

State law requires that ALL VISITORS (including parents) REPORT TO THE SCHOOL OFFICE upon entering the building. During school hours, all outside doors are locked. Visitors must report to the office to obtain a visitor's badge. Any visitor found in the building without a badge will be escorted to the office.

Wooster City Schools welcomes and invites you to visit; however, we do ask that you make prior arrangements to visit your child's classroom with the classroom teacher. "Dropping in to talk" with a child's teacher during the school day (8:20-3:50) is very disruptive to the academic environment and interrupts instruction. Instead, please call your child's teacher to schedule a conference at a time that works for both of you.

- A. Students may not bring visitors to school without prior written permission from the principal.
- B. Students are not permitted to open school doors to visitors.
- C. Staff are expected to question people in the building they do not recognize and who are not wearing a badge, and to question people who are "hanging around" the building during or after hours.
- D. Students and staff are expected to immediately report to a teacher or administrator any suspicious behavior or situation that makes them uncomfortable.
- E. All district employees are to wear photo-identification badges while in district schools and offices, or on district property.
- F. Except in the case of service animals (required for use by a person with a disability) and therapy dogs, no other animals may be on school premises at any time.

Lost and Found

Name/labels on supplies, articles of clothing, and other belongings are the most helpful factor in recovering lost property. Unclaimed items will be given to charity at the close of each trimester..

Use of School Telephones

School telephones may not be used for personal calls. Except in an emergency, students will not be called to the office to receive a telephone call.

Electronic Communication Devices

Possession of an electronic communication device (ECD) by a student is a privilege that may be forfeited by any student who fails to abide by the terms of this guideline or otherwise engages in misuse of this privilege. Strict adherence to this guideline is required.

An "electronic communication device" is a device that emits an audible signal, vibrates, displays a message or otherwise summons or delivers a communication to the possessor. The following devices are examples of ECDs: cellular and wireless telephones, Smartphones, Wi-Fi-enabled or broadband access devices, two-way radios or video broadcasting devices, laptops, and other devices that allow a person to record and/or transmit, on either a real time or delayed basis, sound, video or still images, text, or other information.

Students may possess a cellular telephone or other electronic communication device provided that during school hours and on school vehicles the cellular phone or other ECD remains off and stored out of sight. The requirement that the cellular telephone and ECD must be turned off will not apply if the student is using the cellular telephone or ECD for an educational or instructional purpose with the teacher's permission. "Using" refers to, not only the making and/or receiving of calls, but also using the ECD for any other purpose (e.g. sending e-mails, text messages or instant messages, taking pictures, making recordings/videos, etc.). Students also may not use ECDs on school property or at a school-sponsored activity to access and/or view Internet Web sites that are otherwise blocked to students at school. Distracting behavior that creates an

unsafe environment will not be tolerated.

ECDs, including but not limited to devices with cameras, may not be possessed, activated or utilized at any time in any school situation where a reasonable expectation of personal privacy exists. These locations and circumstances include but are not limited to classrooms, locker rooms, shower facilities, bathrooms, swimming pool, and any other areas where students or others may change clothes or be in any stage or degree of disrobing or changing clothes, whether here or at another school district where a school activity or athletic event is occurring. The building principal has authority to make determinations as to other specific locations and situations where possession of an ECD is absolutely prohibited.

A student may keep his/her ECD "on" under the following circumstances with prior approval of the building principal:

- A. The student has a special health circumstance (e.g. an ill family member, or his/her own special health condition).
- B. The student is using the ECD for an educational or instructional purpose (e.g. taking notes, recording a class lecture, writing papers) with the teacher's permission and supervision. However, the use of any communication functionality of the ECD is expressly prohibited. This includes, but is not limited to, wireless Internet access, peer-to-peer (ad-hoc) networking, or any other method of communication with other devices or networks. In no circumstances shall the device be allowed to connect to the district's network. The preceding prohibitions do not apply to board-owned and issued laptops, PDAs, or authorized assistive technology devices.

Students are prohibited from using ECDs to capture, record, or transmit the words (i.e. audio) and/or images (i.e., pictures/video) of any student, staff member, or other person in the school or while attending a school-related activity, without expressed prior notice and explicit consent for the capture, recording, or transmission of such words or images. Using an ECD to take or transmit audio and/or pictures/video of an individual without his/her consent is considered an invasion of privacy and is not permitted, unless authorized by the building principal. Students who violate this provision and/or use a ECD to violate the privacy rights of another person may have their ECD confiscated.

No expectation of privacy will exist in the use of ECDs on school premises/property. Students are prohibited from using an ECD in any way that might reasonably create in the mind of another person an impression of being threatened, humiliated, harassed, embarrassed, or intimidated. See Policy 5517.01 – Bullying and Other Forms of Aggressive Behavior.

Students are also prohibited from using an ECD to capture and/or transmit test information or any other information in a manner constituting fraud, theft, cheating, or academic dishonesty. Likewise, students are prohibited from using their ECDs to receive such information.

The board assumes no responsibility for theft, loss, damage, or vandalism to ECDs brought onto its property, or the unauthorized use of such devices. Students and parents are strongly encouraged to take appropriate precautions, if students have ECDs in their possession, to make sure the devices are not left unattended or unsecured.

Using an ECD in an unauthorized manner or in violation of Policy 5136, 5900, 7542 or this guideline may result in loss of this privilege, additional disciplinary action (e.g. warnings, parental notification and conferences, suspension, expulsion), confiscation of the ECD (in which case, the device will only be

released/returned to the student's parent/guardian after the student complies with any other disciplinary consequences that are imposed), and/or referral to law enforcement if the violation involves an illegal activity (e.g. child pornography). A person who discovers a student in possession of or using an ECD in violation of this guideline is required to report the violation to the building principal. If a teacher or administrator observes a violation of this guideline, s/he is required to confiscate the device and bring it to the building principal's office and provide the name of the student from whom the ECD was taken. Any confiscated device will be held in a secure location in the building's central office until the item is retrieved by the student's parent/guardian. Students whose ECDs are confiscated may be required to contact their parents/guardians to inform them that the item was confiscated and that it will only be returned to the parents/guardians. If multiple offenses occur, a student may lose his/her privilege to bring an ECD to school for a designated length of time or on a permanent basis.

Parents/Guardians are advised that the best way to get in touch with their child during the school day is by calling the school office.

Student Acceptable Use Of Technology

Computer Use [See Board Policy 5900—Student acceptable Use of Technology]

Wooster City Schools and the state of Ohio have provided computers for all students to use. District guidelines will be followed. Any intentional misuse of computers may result in a loss of privileges.

TECHNOLOGY ACCEPTABLE USE POLICY (AUP)

Each year students, staff and volunteers must sign an acceptable use policy form, which states that the users will use the computer within the guidelines set forth by the district. Parents of children under the age of 18 will also be asked to sign with their child.

The Wooster City School District is pleased to make available to students, access to interconnected computer systems with the district and to the Internet, the world-wide network that provides various means of accessing significant educational materials and opportunities.

In order for the school district to be able to continue to make its computer network and Internet access available, all students must take responsibility for appropriate and lawful use of this access. Students must understand that one student's misuse of the network and Internet access may jeopardize the ability of all students to enjoy such access. While the school's teachers and other staff will make reasonable efforts to supervise student use of network and Internet access, they must have student cooperation in exercising and promoting responsible use of this access.

Library

The library plays an important part in our educational program. There are many volumes in our school libraries and our children take advantage of this. Classes are scheduled to make regular visits and individuals or groups make additional visits as needed. Parents are needed to help at all times. If you can help a half-day per week, please inform the librarian or the secretary. **Students with overdue books may not be allowed to check out more books until past due books are returned.**

Equal Education Opportunity

The Board of Education declares it to be the policy of this district to provide an equal opportunity for all children to achieve their maximum potential through the curriculum offered in this district regardless of race, color, creed, handicap, religion, sex, ancestry, national origin, place of residence, or social or economic background.

Family Changes

A student's school work often reflects changes in the family - new baby, illness of a grandparent or other family member, divorce, marriage, loss of a parent's job, etc. Parents/Guardians are encouraged to inform the school of such changes, which may be of deep concern to a child. Confidentiality will be maintained. Knowing of a special family circumstance will help the teacher support the child with extra sensitivity.

Gifted Identification

Wooster City Schools has a state mandated gifted identification plan. This plan allows us to identify students in the areas of superior cognitive ability, specific academic ability in reading and math. Specific criteria for identification are used for each area. Complete information may be obtained from your child's building principal.

Smoking Policy

Wooster City Schools has designated all schools and school grounds as smoke free. Smoking is prohibited anywhere on the grounds of Wooster City Schools.

Insurance

The Board of Education recognizes that students may suffer injuries in the course of attendance at school and participation in the athletic and co-curricular programs of the schools. Accordingly, the board will provide such insurance coverage as is authorized by law and will make available to parents insurance coverage for other contingencies. The board will maintain insurance coverage by a qualified insurer at no cost to the student for injury resulting from accidents sustained in the course of transportation under the authority of the board.

The board will provide parents the opportunity to purchase group insurance coverage, at no cost to the board, for injury resulting from accidents sustained by students in school, on school grounds, at an activity sponsored by the school, while traveling between home and school, and in any activity round-the-clock. Participation shall be voluntary, and in no case shall this insurance coverage be a requirement for participation in any school activity.

SECTION II – ACADEMICS

Field Trips

Field trips are academic activities that are held off school grounds. There are also other trips that are part of the school's co-curricular and extracurricular program. No minor student may participate in any school-sponsored trip without parental consent and a current emergency medical form on file in the office. A blanket authorization may be obtained one time to cover a series of trips during the school year.

- A. Attendance rules apply to all field trips
- B. While the district encourages students to participate in field trips, alternative assignments will be provided for any student whose parent does not give permission for the student to attend.
- C. Students who violate school rules may lose the privilege to go on field trips at the discretion of the building principal.
- D. No siblings are permitted to attend field trips.
- E. Parents and Guardians who wish to attend field trips with their students need to be in communication with the classroom teacher prior to the day of the field trip. Depending on the field trip, attendance and transportation may have to be limited for parents and guardians.

Report Cards

At the end of each trimester, teachers complete a report card for each student. Parents are expected to keep their copy of the report card, sign the cover of the report card envelope and return the envelope to school with their child. Parent/teacher conferences are held once in the fall and once in the spring.

When a student appears to be at risk of failure, reasonable efforts will be made to notify the parents so they can talk with the teacher about what actions can be taken to improve poor grades.

Recognition of Student Achievement

Students who display significant achievements during the course of the year are recognized for their accomplishments. Areas that may merit recognition include, but are not limited to, academics, athletics, performing arts, citizenship, and volunteerism.

Homework

The policy of the WCS regarding homework emphasizes that the work should be of a kind the teacher finds necessary to accomplish at home. Homework activities are an extension of the classroom; as such, the teacher should provide adequate supervision and evaluate the completed activities. Some students may need encouragement to pursue novel ideas or to follow through on creative solutions to problems. Others may need guidance in providing needed study and practice on some of the more basic skill areas. It will be necessary, at times, to have reasonable and worthwhile homework assignments for students and that these be based on the student's individual needs and abilities.

SECTION III Student Conduct

ATTENDANCE (see Board Policy 5200)

School Attendance Policy

Students are expected to attend classes regularly and to be on time in order to receive the full benefit from our instructional program and to develop habits of punctuality, self-discipline, and responsibility. Continuity in the learning process is seriously disrupted by excessive absences. In most situations, the work missed cannot be made up adequately. Students who have good attendance generally achieve higher grades, enjoy school more, and are more employable after leaving high school. For these reasons, we feel that a student must satisfy academic and attendance requirements.

The explanation of each absence shall be made (by the parent or guardian) to the building principal as designee of the superintendent.

- Anytime a student is absent, a parent must call to notify the school (note, voicemail or e-mail). Please notify by no later than 9:05 am.
- Parents or Guardians include first & last name, homeroom and reason for absence when notifying of an absence.

An excuse for absence from school may be approved on the basis of any one (1) or more of the following conditions:

- A. **Personal illness**
(a written physician's statement verifying the illness may be required)
- B. **Illness in the family necessitating the presence of the child**
- C. **Quarantine of the home**
- D. **Death of a relative**
- E. **Necessary work at home due to absence or incapacity of parent(s)/guardian(s)**
- F. **Observance of religious holidays**
(For observing a religious holiday consistent with his/her creed or belief)
- G. **Out of State Travel to Participate in a District approved enrichment or extracurricular activity.**
- H. **Such good cause as may be acceptable to the Superintendent**
- I. **Absence During the School Day for Professional Appointments**
Parents are encouraged to schedule medical, dental, legal, and other necessary appointments outside the school day. Since this is not always possible, if a student is to be absent for part of the day:
 - The student shall bring a signed statement from the doctor, dentist, lawyer, counselor, etc. to the effect that s/he reported promptly for the appointment.
 - The student shall report to school immediately after his/her appointment if school is still in session)(maximum of 24 hours per school year)
- J. **Emergency or Special Circumstances**
(Which, in the judgment of the superintendent, constitute a good and sufficient cause for absence from school)

Attendance need not always be within the school facilities; a student will be considered to be in attendance if present at any place where school is in session by authority of the board.

The board shall consider each student assigned to a program of other guided learning experiences to be in regular attendance for the program, provided that s/he reports to such staff member s/he is assigned for guidance at the place in which s/he is conducting study, and regularly demonstrates progress toward the objectives of the course of study.

Procedures Concerning Absences and Truancy

Families will be forewarned once their child has accumulated 30 hours of absence.

ORC 3321.191 (C)(1)	Consecutive Hours	Hours Per School Month	Hours Per School Year
Habitual Truancy	30 hours without legitimate excuse	42 hours without legitimate excuse	72 hours without legitimate excuse
Excessive Absences	N/A	38 hours with or without legitimate excuse	65 hours with or without legitimate excuse
Chronic Absenteeism	N/A	N/A	10% or 92 hours with or without legitimate excuse

Trigger an Attendance Intervention Plan (AIP) meeting:

1. Student reaches level of habitual truancy as reported in DASL
2. Secretary sends out standardized attendance call to parents* notifying them that an AIP meeting will be set (1st notification)
3. Secretary sends out a calendar invite to the team (see below) with the date and time of the AIP meeting based on availability on shared calendars. AIP meeting **MUST** be held no later than 14 days from the triggering absence date.
4. Secretary runs AIP letter and fills in the date of time of meeting and mails to parent (2nd notification)
5. Within 7 days of the triggering absence, if the parent has not responded to the meeting invitation, a school counselor will call the parent. (3rd notification, if needed)

Wooster Attendance Intervention Team (AIT) Members:

Optimally, a Wooster AIT will consist of the student, parent, building principal and building guidance counselor. Attendance secretaries, teachers, the school resource office or other staff members with a relationship to the student may be asked to participate on an as-needed basis. Each building can determine its own teams.

Standard Agenda for AIP Meeting:

1. Discuss student attendance
2. Discuss factors/barriers contributing to the student not coming to school
3. Discuss academic progress and behavior at school
4. Discuss recommendations offered by the parent and/or student
5. Discuss interventions recommended and offered by the school

6. Establish an Attendance Intervention Plan for the student and begin tracking for 60 days.
7. Give a written copy of the AIP to the parent at the conclusion of the meeting or, if the parent is not present, mail a copy of the AIP to parent within 7 days of meeting.

Contact from a parent/guardian is required for all advanced absences and must include the dates of the absence and the reason for the absence. Any absence not justified by one of the above categories will be judged unexcused.

Tardiness and Leaving School Early

For any student leaving the building during the school hours, a parent or guardian must notify the school. Notes sent in should be presented to the teacher upon the child's arrival at school. The parent must come into the office, report to our school secretary and sign out the child. Upon his/her return, the child and/or parents are to sign-in on the same sheet indicating the time of return. If someone other than a parent is to pick up the child, the office must be notified in advance. This same procedure is to be followed if a child is to leave because of illness.

Students will not be released to anyone not listed on the emergency medical form without parent/legal guardian permission.

Any student who arrives after 9:05 AM will be counted as tardy, unless the student has a doctor's (or other professional) appointment.

- Any student who arrives after 10:20 AM will be counted as absent for the morning.
- Any student who arrives after 2:05 PM will be considered absent for the entire day.
- Any student who leaves before 2:05 PM will be considered absent for the afternoon.

Student Vacations During the School Year

Students are permitted to go on vacation during the school year without penalty (except the week ending each semester or during district/state testing). The purpose of this administrative guideline is to accommodate parents who must take their vacations during the school year and the desire to enjoy that time as a family.

Whenever a proposed absence-for-vacation is requested, parents must discuss it with the principal. The length of absence should be made clear, and those involved should have an opportunity to express their views on the potential effects of the absence.

The district will only approve a student's absence for a vacation when s/he will be in the company of his/her own parent but not other students' parents, unless there are extenuating circumstances deemed appropriate by the principal.

If a student is absent for any other type of vacation, s/he will be considered inexcusably absent from school and subject to truancy regulations.

The student may be given approximate assignments and materials and pages to be completed.

The time missed will be counted as an authorized, unexcused absence, but shall not be a factor in determining grades unless make-up work is not completed.

TWO-WEEK notice is requested in order to make fair determinations and preparations. **Prearranged vacations may not exceed a total of five school days during the school year; days missed in excess of the prearranged vacation will be unexcused.**

Harassment

I. General Statement of Policy

Offensive speech and conduct are entirely inappropriate in the Wooster City Schools. It is a violation of board policy for any pupil, teacher, administrator, or other school personnel to harass a pupil, teacher, administrator, or other school personnel in any of the following ways:

A. Sexual Harassment

1. Verbal: The making of offensive written or oral sexual innuendoes, suggestive comments, jokes of a sexual nature, sexual propositions, or threats toward a fellow staff member, student, or other person associated with the Wooster City Schools.
2. Nonverbal: Causing the placement of offensive sexually suggestive objects, pictures, or graphic commentaries in the school or work environment, or making of offensive sexually suggestive or insulting gestures, sounds, leering, and the like to a fellow staff member, student, or other person associated with the Wooster City Schools.

B. Racial/Gender/Ethnic/Religious/Disability and Other Harassment

1. Verbal or oral innuendoes, comments, jokes, insults, threats, or disparaging remarks concerning a person's race, gender, national origin, religious beliefs, etc. that are offensive to a fellow staff member, student, or other person associated with the Wooster City Schools.
2. Nonverbal: Placing objects, pictures, or graphic commentaries in the school environment, or making insulting or threatening gestures that are offensive to a fellow staff member, student, or other person associated with the district.

II. Reporting Procedures

Any person who believes he or she has been the victim of sexual, racial, or other forms of harassment by a student, teacher, administrator, or other person associated with the Wooster City Schools must report the alleged act immediately to the immediate supervisor. Students should report incidents of harassment to their teacher, counselor, or principal. If the immediate supervisor or student's teacher, counselor, or principal is the alleged harasser, the staff member or student should contact the Title IX Coordinator, Director of Elementary Education or the Section 504 Coordinator, Director of Pupil Services, as appropriate. If the alleged harasser is a student of the district, the supervisor, if not the student's principal, should immediately inform the student's principal of the alleged harassment. The school district encourages the complainant to use the available report form, but oral reports will be considered complaints as well.

The school district will respect the privacy of the complainant, the individual(s) against whom the complaint is filed, and the witnesses as much as possible, consistent with the school district's legal obligations to investigate, to take appropriate action, and to conform to any discovery or disclosure obligations.

A written summary of each report is to be prepared promptly by the staff member receiving the report and forwarded to the Title IX Coordinator, Director of Elementary Education, or the Section 504 Coordinator, Director of Pupil Services, as appropriate.

III. Investigation

Investigation of a complaint will begin immediately and will normally include conferencing with the parties involved and any named or apparent witnesses. The investigation may be conducted by Wooster City Schools' officials or by a third party designated by the school district.

In determining whether alleged conduct constitutes a violation of this policy, the school district should consider the surrounding circumstances, the nature of the behavior, past incidents, past or continuing patterns of behavior, the relationships between the parties involved and the context in which the alleged incidents occurred.

The investigation will be completed as soon as practicable. The Title IX or 504 coordinator will make a written report to the superintendent upon completion of the investigation.

IV. School District Action

If the investigation reveals that the complaint is valid, the Wooster City Schools will promptly take appropriate action to prevent the continuance of the harassment or its recurrence. This may include, but is not limited to: warning, suspension, exclusion, expulsion, transfer, remediation, or termination. Any form of sexual harassment of a student is considered a form of child abuse and the abuser will be reported immediately.

The complainant will be notified of the completion of the investigation in accordance with state and federal law regarding records privacy.

V. Reprisal

Wooster City Schools will discipline or take appropriate action against any student, teacher, administrator or other school personnel who retaliates against any person who reports alleged harassment or any person who testifies, assists or participates in an investigation. Retaliation includes, but is not limited to: any form of intimidation, coercion, reprisal, or harassment.

VI. Definitions

Sexual Harassment -

Unwelcome behavior of a sexual nature. It may be physical, verbal, or visual (such as displays of derogatory cartoons or posters).

Quid Pro Quo -

A Latin term used in law that means "you do something for me and I'll do something for you." In street terms, it means sex-for-jobs/grades, etc. It can be based on a single advance or a long series of incidents.

Hostile Environment -

The most prevalent form of sexual harassment. For practical purposes, any sexually oriented conduct or any sexually oriented atmosphere that is intimidating or offensive to a reasonable person of the same gender can be construed as a hostile environment. It generally involves a course of conduct. This can also be related to gender ethnic, racial, or other harassing remarks.

Bullying –

Any intentional written, verbal, or physical act that a student has exhibited toward another particular student more than once and the behavior:

- causes mental or physical harm, and
- is sufficiently severe, persistent, or pervasive that it creates an intimidating, threatening, or abusive educational environment for the other student.

CONFLICT	RUDE	MEAN	BULLYING
Occasional	Occasional	Once or Twice	Is REPEATED
Not planned; in the heat of the moment	Spontaneous; unintentional	Intentional	Is planned and done on purpose
All parties are upset	Can cause hurt feelings; upset	Can hurt others deeply	The target of the bullying is upset
All parties want to work things out	Based in thoughtlessness, poor manners or narcissism	Based in anger; impulsive cruelty	The bully is trying to gain control over the target
All parties will accept responsibility	Rude person accepts responsibility	Behavior often regretted;	The bully blames the target
An effort is made by all parties to solve the problem			The target wants to stop the bully's behavior; the bully does not
Can be resolved through mediation	Social skill building could be of benefit	Needs to be addressed/ should NOT be ignored	CANNOT be resolved through mediation

Source: Jennifer Astles, DASA Newsletter, January 2014, TST BOCES

Student Discipline Code (Suspension, Expulsion, Due Process)

Suspension, Expulsion And Due Process

Respect for law and for those persons in authority shall be expected of all students. This includes conformity to school rules as well as general provisions of law affecting students. Respect for the rights of others, including tolerance of diversity of race, color, religions, gender, family status, national origin, handicap, age, or ancestry, consideration of their privileges, and cooperative citizenship shall also be expected of all members of the school community.

Respect for real and personal property, pride in one's work, achievement within the range of one's ability, and exemplary personal standards of courtesy, decency, and honesty shall be maintained in the schools of this district.

A student who fails to comply with established school rules or any reasonable request made by school personnel on school property and/or at school-related events will be dealt with according to approved student discipline regulations. The board has “zero tolerance” for violent, disruptive or inappropriate behavior by its students and such behavior is prohibited as set forth in the Student Code of Conduct. The board also has a “zero tolerance” for excessive truancy, and truancy from classes will result in disciplinary action as set forth in the board’s Student Attendance Regulation.

Student conduct shall be governed by the rules and provisions of the Student Code of Conduct/Student Discipline Code. O.R.C. 3313.20, 3313.534, 3313.66, 3313.661

Suspension

If a student's behavior is such that it becomes necessary to consider suspension, due process requires that the student and his parents be given oral and/or written notice of the intention to suspend and the reasons for it. Should the student deny the charges, she/he will be given an explanation of the evidence which the administration has to support the charges; and the student will also be given the opportunity to present the student's side of the story. An appeal may be addressed to the superintendent whose decision will be final. No suspension shall be for more than ten school days.

Should the behavior of a student at any time create a condition in which the very presence of the student in question poses a continuing danger to persons, property, or to the academic process itself, that individual may be immediately removed from the school without having followed the procedure outlined above. In such extreme cases, the necessary notice and hearing should be extended to the student within twenty-four hours or as soon after his dismissal as is practicable.

This policy, like others of the Wooster Board of Education, is applicable to all approved school activities regardless of whether they fall within the regular school day or not.

Expulsion

When it becomes necessary to consider expulsion, a student and his/her parent or guardian must be given written notice of the intention to expel and the reasons for it. A formal hearing will be held before the superintendent of schools, a written record of which shall be kept and if a parent or guardian or adult student should desire that counsel be allowed to take part in such hearing, such will be allowed.

Should the parent, guardian or adult student wish to challenge the decision of the superintendent after the expulsion hearing, they may do so by appealing in writing to the board of education. Parents, guardians and adult students have the right to bring legal counsel. The student or parents may ask for a private hearing before the board, but any action must take place at a public meeting. The reinstatement of a student demands a majority vote of the total board membership.

The following is a list of activities that may lead to suspension and/or expulsion

1. Extortion.
2. Use of profane or obscene language, symbols, or gestures.
3. Fighting, hitting, unauthorized touching; inciting or encouraging others to fight or hit.
4. Damage or destruction of school or personal property - vandalism.

5. Theft or unauthorized possession of another's property.
6. Cheating.
7. Slanderous or libelous acts.
8. Public display of affection, sexual activity, or indecent exposure.
9. False fire, tornado alarms, or bomb threat.
10. Possession or use of tobacco products or unauthorized possession of matches or lighters on school premises.
11. Possession of fireworks, firearms, or other dangerous weapons or look-alike weapons.
12. Improper dress or grooming.
13. Threats, menacing remarks, verbal intimidation or harassment.
14. Disregard of authority, disrespect or insubordination to school personnel.
15. Forgery or intentionally giving incorrect information to school personnel.
16. Loitering.
17. Possession, use, sale, distribution, or being under the influence of any drug including alcoholic beverages or any counterfeit drugs of abuse.
18. Multiple violations or expanded misbehavior.
19. Unauthorized use of school computers/phone technology.
20. Disruption, interference with, or creating or taking part in disturbances in curricular or co-curricular activities.
21. Provoking, assaulting, or harassing a student, visitor, or school employee.
22. Failure to accept other disciplinary measures.
23. Other behavior not specified above.

Discipline

Dress Code (See Board Policy 5511):

Clothing, accessories, or hair (including color or style) that distracts from the educational process, constitutes a safety hazard, or makes a statement inappropriate to the school setting will not be permitted. The following are presented as guidelines to promote better understanding of appropriate student appearance:

- A. Students must wear shoes in and around the building at all times.
 1. Students may NOT wear flip-flops for P.E. class.
 2. For P.E., shoes should have a soft upper and soft rubber sole (non-scuffing and without a heel) that provides good traction for your child's safety and his/her classmates. The shoes also should have laces to be tied (Velcro is OK) so that the shoes stay on and the laces are off the ground.
- B. Clothing should be constructed and worn in such a manner that it is not unduly revealing. Halter-tops, tank tops, midriff tops, sleeveless muscle shirts, very short mini- skirts or other garments of this nature are not acceptable. Sports tops with large arm openings and tank or spaghetti strapped tops/camis are also **not** permitted unless a shirt is worn underneath or over.
- C. Clothing and/or accessories that graphically or symbolically promote and or imply profanity, sex, drugs, alcohol, tobacco, gangs, violence, hate language, or weapons are not permitted.
- D. Shorts may be worn to school but must be of an acceptable length (mid thigh or longer). Pants, shorts, or skirts should fit properly and reasonably around the waist and be hemmed in an appropriate length. Excessively tight shorts and pajama pants are not permitted. Proper undergarments will be worn under ALL clothing and should not be visible.

- E. No hats (including but not limited to full head coverings such as bandanas, head scarves, hoods, etc.) are permitted in the building. Exception: approved religious or medical need.
- F. Sunglasses shall not be worn in school unless required by a physician.
- G. All clothing should be neat, clean, and in good repair. Ripped or torn clothing may not be worn.
- H. Coats and head apparel commonly used as outerwear are not permitted during the school day.
- I. Heavy chains, wallet chains, dog chains, etc., are not permitted.

The administration reserves the right to determine the appropriateness of student dress. Students may be asked to change unacceptable clothing and parents may be called to bring suitable attire if necessary. The guidelines were developed in order to maintain safety and support an environment conducive to learning.

Loitering

Elementary students are to leave the school premises immediately after dismissal, unless involved in a supervised school activity or waiting for a school bus. This will ensure crossing guards are at their post when students are on their way home. Bused students must remain in the classroom until their bus arrives for departure. Students leaving the area will lose the privilege of riding the bus.

Before school, students should not arrive on the campus before 8:45 A.M. There is no student supervision available before this time.

Roller Blades/Skateboards

Roller blades, roller blade shoes, and skateboards are not to be brought to school for any reason.

SECTION IV – TRANSPORTATION

Bus Safety, Procedures And Rules

Wooster City Schools provides bus transportation for many of its students. It is the goal of the Wooster board of education to provide transportation to and from school in a safe and efficient manner. For the safety of all, the following behaviors are expected of students:

Waiting to load the bus (on the road and at school) each student shall:

- Be on time at the designated loading zone 5 minutes prior to scheduled stop
- Behave in a safe, kind, and polite manner while waiting for the bus to arrive
- Stay off the road at all times while walking to and waiting for the bus
- Line up single file off the roadway to enter
- Wait until the bus is completely stopped before moving forward to enter
- Refrain from crossing a highway until the bus driver signals it is safe
- Go immediately to a seat and be seated.

During the trip each student shall:

- Obey the instructions of the driver
- Go directly to his/her assigned seat
- Observe classroom/school conduct

- Do not eat, drink, or chew gum
- No profanity
- No smoking or tobacco chewing
- Keep head, hands, and feet inside the bus
- Do not shout or throw objects out the windows
- Keep the aisles clear and the bus clean.

Leaving the bus each student shall:

- Remain seated until the bus has stopped
- Cross the road, when necessary, at least 10 feet in front of the bus, but only after the driver signals that is safe
- Be alert to a possible danger signal from the driver.

The driver is not to discharge students at places other than their regular stop or home or at school unless she/he has proper authorization from school officials. Authorization may be granted for emergencies, but cannot include before or after school visits unless it is the requesting student's regular bus. (Simply put, students may not go on a bus to which they are not assigned...we are at or near capacity on all our buses.)

Temporary Bus Pass

Whether it is for the Morning or Afternoon routes, the transportation office must be notified if your child needs a temporary bus pass to ride a bus or a different bus than they are not routed for. This is to ensure the safety of our students, your child, and our staff. If the transportation department is not notified and permission is not granted to our drivers by the transportation department supervisor, your student will not be permitted to board the bus for transportation.

Bus Discipline

A student who becomes a discipline problem on the bus shall be subject to the appropriate consequences which may include among others: parent contacts, referral to the principal, loss of noon recess, detention, in-school suspension, bus probation, and temporary or permanent suspension of riding privileges.

Very serious problems, such as fighting on the bus, disrespect, or refusal to listen to the driver may result in bus suspension even for a first offense. If a student is suspended from the bus, his/her parent(s) shall be required to furnish transportation to and from school during the entire period of suspension. In addition, students should not bring on the bus the following items: live animals, weapons, toy guns, explosives (including fireworks), tobacco products, matches or lighters, alcohol or drugs, glass containers, or other dangerous objects. Parents' cooperation in working with the schools will help create a safe and pleasant bus riding experience for students.

Videotapes On School Buses

The Board of Education has authorized the installation of video cameras on school buses for purposes of monitoring student behavior. If a student is reported to have misbehaved on a bus and his/her actions were recorded on videotape, the tape will be submitted to the principal and may be used as evidence of the misbehavior.

Title IX And Section 504 Coordinators (Non-Discrimination)

As part of the compliance program of the Wooster City Schools to identify, remedy, and prevent discrimination on the basis of race, color, national origin, sex, handicap, and age, the following persons have been designated as coordinators of Title IX of the Education Amendments of 1972, and Section 504 of the Rehabilitation Act of 1973: 1. Coordinator, Title IX, Director of Elementary Education, and Section 504 coordinator, Director of Pupil Services, Wooster City Schools, 144 N. Market St., Wooster, OH 44691, 330/988-1111.

The above individuals, as compliance coordinators, are responsible for ensuring that federal and state regulations relative to Title IX and Section 504 are complied with and that any complaints are dealt with promptly in accordance with the law.



Wooster City School District

Inspiring World-Class Academic Achievement

Parkview Elementary School

773 Parkview Street, Wooster, OH 44691

Phone: 330-988-1111 or 330-262-3821

Principal – Steve Furlong

Extension 4550

wstr_sfurlong@woostercityschools.org

Secretary – Beth Jewell

Extension 4500

wstr_bjewell@woostercityschools.org



Parkview Family Appendix

Welcome to *Parkview Elementary School*

Dear Families and Students,

In support of our mission statement, we at Parkview are always striving to find better ways to orchestrate ***success for all students***. At Parkview, we have the right staff to continuously improve the quality of learning for your children. We work hard to provide meaningful experiences that influence the knowledge, attitudes, and skills of the students and educational personnel. An unknown author said it best, "Teamwork is the fuel that allows common people to produce uncommon results." The work we do each day is for the children and...***we count on you as valuable team members!***

This Student/Parent Handbook has been prepared to serve as a source of information and a guide to assist you in establishing the correct procedures, attitudes, and conduct necessary for good citizenship at Parkview Elementary School. In the handbook, you will find guidelines for success. ***Students and parents are encouraged to read and review the information presented, as it can answer the many questions and concerns that may come up during the school year.***

We look forward to a rigorous and productive school year at Parkview Elementary. ***We encourage families to become involved in the many activities that take place in our school.*** Please consider participating in our Parent-Teacher Organization (P.T.O.) in their many projects or volunteer as a Parental Aide to Teacher (P.A.T.). Family involvement in a child's education provides rewards for both children and adults.

Once again, ***welcome***. Our hope is that these years will be among your best school memories. If you have any questions, please feel free to call or email our school office.

Children Learn What They Live

If a child lives with criticism,
She learns to condemn.

If a child lives with hostility,
He learns to fight.

If a child lives with ridicule,
She learns to be shy.

If a child lives with shame,
He learns to feel guilty.

If a child lives with tolerance,
She learns to be patient.

If a child lives with encouragement,
He learns confidence.

If a child lives with praise,

She learns to appreciate.

If a child lives with fairness,
He learns justice.

If a child lives with security,
She learns to have faith.

If a child lives with approval,
He learns to like himself.

If children live with acceptance and friendship,
They learn to find love in the world.

--adapted from Dorothy Law Nolte

Parkview Elementary School

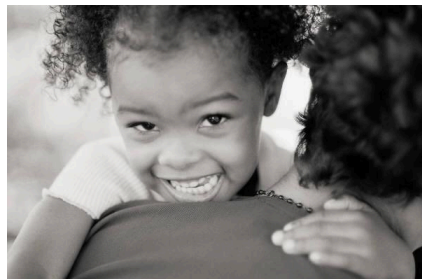
Vision Statement

Student success through a supportive community

Mission Statement

Together we empower each other to be learners and leaders. We create safe, supportive relationships, collaborate within our learning communities, and celebrate the genius in us all.

Create, Collaborate, Celebrate!



LEADER IN ME SCHOOL

Families,

Welcome to The Leader in Me! Each new school year brings opportunities for academic growth and growth in all areas of development. Although children must be knowledgeable when they graduate, they must also be healthy, engaged, responsible, and caring people. The Leader in Me provides our school with the vision and language to lead the school in a way that addresses all areas of development. As each child discovers and develops his or her unique gifts and talents, they are given opportunities to lead. As leaders, they become active, engaged partners in their own education and their self-confidence, responsibility, and initiative grows. The children quickly understand the benefits of different gifts and talents; they learn to listen to new ideas, work together to achieve results, and motivate one another to be the best. We hope your school enjoys sharing these new opportunities. Together, you will watch each and every child grow throughout the year.

TABLE OF CONTENTS

II. BEHAVIOR	
Parkview School Climate.....	33
Code of Conduct.....	34
Toys and Games.....	34
Leader In Me.....	35
III. DURING THE SCHOOL DAY	
Arrival.....	36
Response to Intervention.....	36
Phone Usage.....	36
Visiting the School.....	36
IV. BREAKFAST/LUNCH/RECESS	
Breakfast Program.....	37
Cafeteria Rules.....	37
Cafeteria Helpers.....	37
Indoor Recess Rules.....	37
Lunch Programs.....	38
Outdoor Recess.....	38
Playground Rules.....	39
V. TO/FROM SCHOOL	
Change in School Routine.....	40
Parking Lot Safety.....	40
Walking to School.....	40
VI. COMMUNICATION/PARENT INVOLVEMENT	
Assignment Books.....	41
Birthdays.....	41
Conferences.....	41
Directory Information.....	41
Early Arrival.....	41
Make Up Work.....	41
Newsletters.....	42
Parent/Teacher Organization (PTO).....	42
Parent Requests.....	42
School Parties.....	42
Supervision at School Programs/Functions.....	42
Title I [School-wide].....	42
Volunteers.....	43
Before and After School Programs.....	43
VII. SAFETY	
Bicycle Safety.....	44
Emergency Information.....	44
Parking Lot Safety.....	44

II. BEHAVIOR

7 HABITS/TALLY SYSTEM/BEHAVIOR EXPECTATIONS

At the elementary level, we use the Leader in Me curriculum as a part of our PBIS framework. We help students develop strategies that foster independence as well as collaboration with others. Elementary buildings use a system to track and reinforce positive behavior. Each month, Leader Rallies are held to recognize students for their social-emotional growth and accomplishments.

Our expectations are based on the 7 Habits of the Leader in Me. Throughout the school year, students will have the same behavioral expectations throughout the building. From the start of the school year, students will begin to learn how to implement the 7 Habits into their daily routines. Our goal is to teach students the habits that will help them to be successful in the future. At Parkview, we believe every student can be a leader and everyone has genius!

7 HABITS OF HAPPY KIDS

1. BE PROACTIVE *You're In Charge*
2. BEGIN WITH THE END IN MIND *Have a Plan*
3. PUT FIRST THINGS FIRST *Work First, Then Play*
4. THINK WIN-WIN *Everyone Can Win*
5. SEEK FIRST TO UNDERSTAND, THEN TO BE UNDERSTOOD *Listen Before You Talk*
6. SYNERGIZE *Together Is Better*
7. SHARPEN THE SAW *Balance Feels Best*

Parkvie TALLY SYSTEM

Every classroom will be using a tally system, which will be represented by colored popsicle sticks, to reinforce expected behaviors. We will celebrate each time our students collectively reach a new school goal. Each day, your child will record his/her tallies on a calendar and will take this home for your review. Please discuss your child's progress or possible areas of growth. This is a fun way to celebrate the great behavior we see from our students each and every day!

Blue Tally- (Individual) I was living the 7 Habits.

Gold Tally- (Whole class) Our class was following the 7 Habits.

Orange Tally- (Individual) I was not following classroom and/or building expectations. I reflected on my behavior and how I can make better choices. (I was not living the 7 Habits.)

BEHAVIOR EXPECTATIONS

Students are expected to behave in a positive manner and will be taught how to do so throughout the school year. Students who do not exhibit positive behaviors will have consequences. It is our goal to coach our students along through difficult moments of learning. It is important that we communicate with families during these times. Here are the behavior expectations that will be used throughout the building.

CODE OF CONDUCT

In order for Parkview's Code of Conduct to be successful, two rules have been identified for all students to follow:

- **Students may not interfere with anyone else's ability to learn.**
- **Students may not interfere with his or her own ability to learn.**

Students will behave and conduct themselves so that the highest level of academic achievement will be maintained; Specific inappropriate behaviors are defined in general below. We reserve the right to use discretion relative to the severity of the offense.

Offense: *Disruption*

Disruption is any behavior that interferes with the orderly operation of the school.

Offense: *Incomplete Work (two or more assignments)*

If a student has two or more missing or late assignments, this constitutes incomplete work. If a student consistently has one late or incomplete assignment a day, the teacher may assign a consequence consistent with a standards-based system in partnership with the principal.

Offense: *Disrespect of Others/Insubordination/Noncompliant Behavior/Failure to Obey*

Disrespect of others includes, but is not limited to: cheating, dishonesty, obscenity, profanity, name calling, teasing, bullying of any kind. Insubordination/Noncompliant Behavior/Failure to Obey includes, but is not limited to: refusal to follow directions, rules, any kind of disobedience, and yelling out at staff/adults.

Offense: *Assault (Kicking and Hitting)*

Kicking, hitting, rough housing, etc. or any form of inappropriate physical contact between two or more people.

Offense: *Fighting*

Fighting is any physical contact in anger or with intent to harm.

Offense: *Disrespect of Property*

Disrespect of property is destruction or theft of materials and/or property belonging to self, others, or the school.

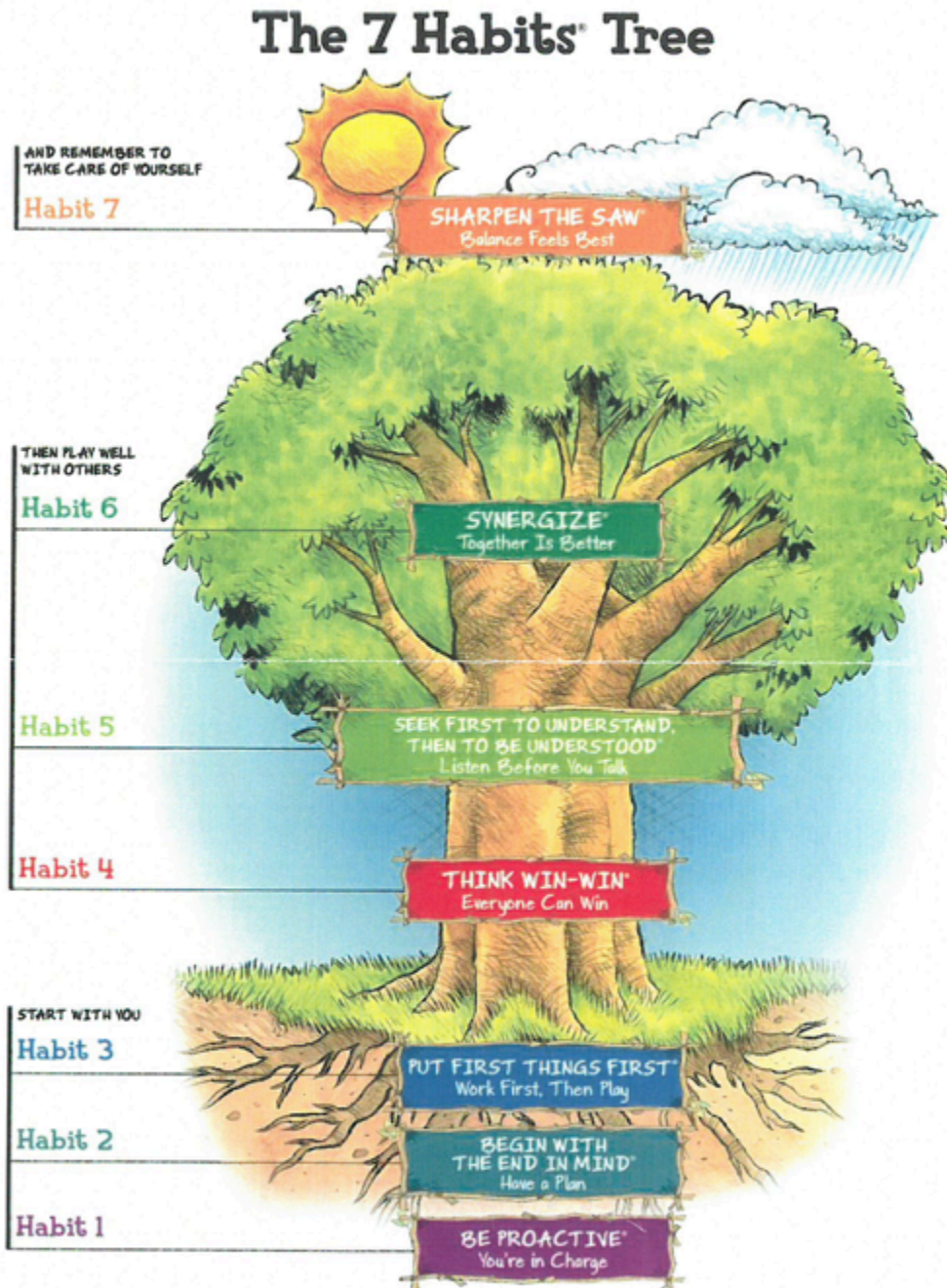
DUE PROCESS - All students are given the opportunity to have an opportunity to speak to his/her side of the story.

TOYS AND GAMES

Toys (stuffed animals, collector cards, figures, dolls, cars, etc.), **games**, and other forms of personal entertainment (such as electronic games, portable CD players, and hand held musical devices) should **not**

be brought to school unless they are a part of a class project. If there is any question regarding what is appropriate for school, it should be brought to the attention of the principal.

Any devices that are permitted by the transportation department for use on the bus must be kept OUT OF SIGHT and in the book bag during the school day--the child is responsible for its care. The school will not be responsible for lost or stolen items--if in doubt--leave it home.



LEADER IN ME SCHOOL

Families,

Welcome to The Leader in Me! Each new school year brings opportunities for academic growth and growth in all areas of development. Although children must be knowledgeable when they graduate, they must also be healthy, engaged, responsible, and caring people. The Leader in Me provides our school with the vision and language to lead the school in a way that addresses all areas of development. As each child discovers and develops his or her unique gifts and talents, they are given opportunities to lead. As leaders, they become active, engaged partners in their own education and their self-confidence, responsibility, and initiative grows. The children quickly understand the benefits of different gifts and talents; they learn to listen to new ideas, work together to achieve results, and motivate one another to be the best. We hope your school enjoys sharing these new opportunities. Together, you will watch each and every child grow throughout the year.

Parkview Staff

III. DURING THE SCHOOL DAY

ARRIVAL

Lobby doors will open at 8:45 a.m. Students arriving after 9:05 will need to report to the office once there is no supervision at the lobby door. Students enrolled in our before school care program will have a morning breakfast option.

Multi-Tier Systems of Support

Multi-Tier Systems of Support integrates assessment and intervention within a multi-level prevention system to maximize student achievement and to reduce behavior problems. With MTSS, schools identify students at risk for poor learning outcomes, monitor student progress, provide evidence-based interventions and adjust the intensity and nature of those interventions depending on a student's responsiveness, and identify students with learning disabilities or other disabilities (National Center for Response to Intervention). Parents are important partners in the intervention process. More intervention and suggested support ideas can be found on our district website.

PHONE USAGE

Given the policy that school telephones are not for personal calls, and with the limited number of phone lines and the large number of students, we only allow students to use the phone with teacher permission. Things we would like you to discuss with your child that would alleviate unnecessary use of the phone include:

1. What to do in the case of early dismissal for inclement weather or emergency.
2. After school activities such as scouts, youth center, visits to friends, etc.
3. Inclement weather at dismissal

If we do not have a written note or a phone call **before 3:15**, your child will follow his/her normal procedure (go home on the bus or walk as usual).

[Please promote your child's safety by making sure s/he has memorized your phone number.]

VISITING THE SCHOOL

See page 15.

IV. BREAKFAST/LUNCH/RECESS

BREAKFAST PROGRAM

Parkview offers breakfast each morning. Breakfast will be served from 8:45-9:00 and students need to be in their classrooms by 9:00. **Please ensure students who need breakfast arrive timely, as breakfast will not be served past 9:00.** (unless a bus is late and we'll provide for that). Menus are sent home monthly. Students may eat daily or only days you select. Cost is \$1.25 daily. If students qualify for the free/reduced lunch program, they will also qualify for breakfast. Reduced breakfast cost is 30¢ daily. ***Kindergarten parents and new families: please ask for more details regarding our Federal lunch programs.***

CAFETERIA RULES

Rules of conduct in the cafeteria are based upon the premise that students should conduct themselves appropriately. The school's rules apply in the cafeteria to all students. Any disturbance in the cafeteria will result in disciplinary action.

Cafeteria rules include:

- Students are to stand in line quietly.
- Sit at assigned tables and remain seated until dismissed by the supervisor.
- Be kind to others, including students, staff, and visitors.
- Use good table manners.
- Absolutely AVOID throwing of food, utensils, etc.
- Talk in a quiet tone to people sitting near your own table.
- AVOID trading food, as it is not permitted.
- Floor and tables must be clean before students are dismissed.
- AVOID bringing carbonated beverages, fast food or any glass containers to school for lunch.

INDOOR RECESS RULES

1. If you need to use the restroom during indoor recess, first get permission from the adult on duty.
2. Stay in your own classroom unless instructed otherwise by your teacher.
3. Find something safe and constructive to do: games, quiet talking, reading, homework, or other activities approved by your teacher.
4. In order to keep all students safe in close quarters, AVOID these behaviors:
 - running
 - throwing objects of any kind
 - crawling
 - tag games
 - jump rope
5. Computers are to be left alone unless your homeroom teacher is in the room supervising you.
6. Use INDOOR VOICES at all times.
7. The only students in the hall should be ones placed there by the adult on duty. Remember that the adult on duty is responsible for all the classrooms-use self-control and act responsibly.
8. If your teacher is allowing you to do certain activities outside the normal realm of inside recess, you must wait until the teacher is there with you to do them. (ex: paint, computers, etc.)

LUNCH PROGRAMS

The cost of a student lunch for the 2024-2025 school year is \$2.70.

Wooster City Schools offers free and reduced priced meals for children unable to pay the full price of meals under the National School Lunch Program. **A new application must be completed each school year.** *Parents may fill out an application either on registration day or in the school office where the child attends to see if they are eligible for free or reduced price meals.* One completed application covers all children attending Wooster City Schools. Notification of eligibility will be sent to parents from the District's Food Service Office. Please keep this notification as it can be used for reduced fees for Wooster Parks and Recreation programs. Federal Programming reduced lunches are \$0.40.

If you would like to have lunch with your child, you may purchase an adult lunch. Please send your lunch choice and money to school with your child. If you would like to take your child out to lunch, please send a note to the teacher in advance and sign-out the student in the office before you leave. **Also please refrain from bringing fast food lunches to school for your child.**

1. All money (including daily lunch money) should be paid in exact change.
2. Separate checks must be written for:
 - A. each sibling (brother/sister) lunch money
3. Use payforit.net to go online & pay fees with a credit card or electronic check. You can also use this service to check student balances.
4. Please phone in lunch orders by 9:05 if your child is going to be late.

OUTDOOR RECESS

Recess is an opportunity for social interaction for children. Students will go outdoors for recess weather permitting. A physician's written request will be required for a student to remain inside. If the temperature falls below 20° (including wind chill), students will not go outdoors for recess.

Parkview Elementary School Playground Rules (Revised 6/2015)

1. Know your boundaries.

All students are to remain visible to a teacher/staff member on duty.

All students are to remain “on top” of the hill. Get permission from a teacher on duty before going to retrieve balls.

The walking path is only open when there is an adult available to supervise. Please check with the recess duty adult if you are unsure .

2. Use equipment properly [the way it is intended and designed to be used].

Baseball diamond may be used for kickball.

The custodian will only go up on the roof once/week to retrieve balls, etc.

Tag is only to be played on the grassy areas—NOT on the “big toy”.

3. Allow each other personal space.

Hands and feet to self.

Agree on the rules before playing tapping games (tag, etc.).

Football may only be played with flag belts or as catching games.

Consider how much room you'll need before deciding where to play your game.

Older children are responsible for watching out for younger ones.

4. Be a problem-solver.

5. Be forgiving.

Remember that there are lots of people on the playground and accidents happen.

If you cause one, check to see that the person is okay and let them know that you didn't do it on purpose.

V. TO/FROM SCHOOL

CHANGE IN SCHOOL ROUTINE

PLEASE SEND A NOTE TO YOUR CHILD'S TEACHER WHEN YOUR CHILD IS TO DEPART FROM ANY NORMAL ROUTINE. A note is especially helpful when you are taking your child out of school early. When the teacher knows when the student is expected to leave, assignments, books, etc. can be ready. You won't be delayed and valuable instruction time won't be interrupted. If we do not have a written note or a phone call **before 3:20** we will insist that your child follow their normal procedure (go home on the bus or walk as usual).

PARKING LOT SAFETY

[see **Parking Lot Safety** in the Safety Section.]

WALKING TO SCHOOL

A. Please encourage your child to practice safety rules when going to and from school. Street crossing should be at school patrol crossings only, if possible.

B. Pupils should arrive at school BETWEEN 8:45 AND 9:00 if they need breakfast. Pupils should arrive at school no later than 9:00 to be in their classrooms by 9:05.

C. Pupils shall stay on sidewalks as much as possible, **and avoid cutting through private property at any time.** Pupils should not cut through parking lots, or business property. In doing so, they respect the property of others and avoid subjecting themselves to dangers such as unattended swimming pools, vicious dogs and other dangers.

D. Pupils should go straight home after school, not stopping at business places unless they have written parental permission. Pupils returning to school to play must be supervised unless they are participating in an announced after-school program.

E. Pupils should be considerate to all other students en route to and from school. There must be no fighting, pushing, name-calling, snowball throwing, etc., on the way to or from school. Remind your child that, by law, he/she is under the joint custody of principal and parent during the trip to and from school and must follow school rules.

VI. COMMUNICATION/ PARENT INVOLVEMENT

ASSIGNMENT BOOKS

For students in grades 3-4, assignment notebooks will be provided in order for the classroom teacher to promote good organizational and study habits. This is an excellent way to communicate with your child's teacher and a good way to check if schoolwork is getting completed in a timely fashion. These assignment books will be given to students the first week of school.

BIRTHDAYS

With the teacher's approval, the student's family may provide birthday treats. To avoid interruption of the academic schedule, please deliver the treats to the office and we'll get them to the classroom.

PLEASE AVOID DISTRIBUTING INVITATIONS AT SCHOOL, unless the whole class is invited [or at least "all the girls, all the boys", etc.]. Addresses for mailing are available in the school directory. Invitations may only be distributed at school under the supervision of the teacher to insure that no one is left out.

CONFERENCES - PARENT/TEACHER

A. Two parent/teacher conferences are held each year. The first conference is scheduled in Nov. and the second conference available in February/ March. By talking with parents later in the school year we can: (1)

note progress made since the first conference; (2) become more informed as to strengths and weaknesses; (3) discuss learning difficulties or areas of concern; (4) again give the parent and teacher an opportunity to communicate.

B. Our feeling is that these conferences are helpful and informative for both parent and teacher. We look forward to and enjoy having the opportunity to meet and talk with you.

C. We are always willing and available to talk at any scheduled time. Do not hesitate to call and make an appointment with the principal and/or teacher.

DIRECTORY INFORMATION [See student records, page 13]

The law states that schools must provide "directory-type" information about students upon request from anyone asking for this information. The directory information would include things like name, address, telephone number, age, etc. If parents do not want this information given out, the law states that they must make their wishes known in writing. The district will remind families in August. Please use this form to let the office know your wishes. The PTO will be offering a form upon which you may share contact information as you choose.

EARLY ARRIVAL

Please do NOT drop children off at school before 8:45 A.M. since proper supervision is not available until that time. Children who walk to school should **NOT** leave their home at a time that will get them to the school grounds before there is adult supervision.

MAKE UP WORK

Pupils who have an **excused absence** must make up the work missed in order to receive credit. Parents who want to pick up make-up work for a child who is out two or more days should phone the office or let the teacher know, and allow sufficient time for a teacher who is busy teaching to get assignments and materials ready. If possible, phone in the morning and pick up the work after school or the next morning. Parents of any student out for an extended time should make an appointment with the principal to establish a support plan. [Students will be given the number of days missed to make up work, i.e. if a student is sick for two days, he will have two days to make up the work.]

NEWSLETTERS

A school newsletter is published approximately once a month. The newsletters contain information that is relevant to Parkview Elementary School and our school community. Newsletters list important dates for the month ahead. Online copies of the newsletters can be obtained at our Parkview website: www.woostercityschools.org then go to "schools" and once on our Parkview home page, see the newsletters link.

PARENT/TEACHER ORGANIZATION (P.T.O.)

P.T.O. has an active and vital function at Parkview. This organization provides our field trips, enrichment projects, assemblies, and much more. We hope you will volunteer and become actively involved in the many service projects at Parkview. Meetings for the 2022-2023 school year will be on the third Tuesday of the month at 4:30 p.m. Childcare may be available if necessary. **[Watch for details in newsletters, flyers, website notes, and the yellow sign out front].**

PARENT REQUESTS

Placements for the next year will be made after school is out in June. The teachers and principal will work together for the best placement for each child. The following criteria will be considered: academics, gender equity, behavioral needs, social needs, and learning styles. Efforts will be made to find compatible and

appropriate groups of students and teachers. With this in mind, please allow us to make the placement that we feel best for your child. Parental requests will **not** be accepted.

SCHOOL PARTIES

PTO sponsors at least 2 parties during the school year. This year, room parents will plan fall and Winter Holiday Parties. Valentine parties will be under the direction and at the discretion of classroom teachers. See the school calendar for dates and times.

SUPERVISION AT SCHOOL PROGRAMS/FUNCTIONS

IF YOU HAVE A STUDENT ANY AGE (ELEMENTARY, JUNIOR HIGH OR HIGH SCHOOL) WHO IS ATTENDING AN EVENT OR PROGRAM AT PARKVIEW, PLEASE SEE THAT HE/SHE IS ACCOMPANIED BY AN ADULT.

If it is a formal program - musical, talent show, etc., then he/she must remain with the accompanying adult. At Family Fun Nights and Spring Festival, **all students and young guests must attend with an accompanying adult who is responsible for him/her.**

TITLE I (SCHOOLWIDE)

Because of our school demographics, we are a Title I school. In order to meet the needs of our student population, we utilize strategies based on scientific research to strengthen our core program and increase the amount and quality of learning time. We also take care to make sure our instructors are highly qualified in the teaching field, have quality staff development, provide transition plans from our preschools, and seek to reach high levels of parent involvement.

Through our Title I program, we have opportunities to provide more reading and math literacy materials, parent literacy nights, literacy luncheons, intervention assistance materials, and more. Families are welcome and encouraged to participate and/or ask questions anytime.

VOLUNTEERS

The Parkview community can be supportive and loyal not only in words, but in actions. Get involved with Parkview as a volunteer helper! We need people who can:

- a) Help in the Library a half day a week; read to classes or students during library hour. [Would you enjoy sharing your favorite picture books, series, or perhaps a chapter of the week?]
- b) Make educational materials for teachers.
- c) Share experiences or skills with whole classes or certain interest groups.
- d) Help with PARENT/TEACHER ORGANIZATION (P.T.O.) projects, special events, field trips, mini courses, etc.
- e) Serve as a Parkview Reads volunteer. Parkview Reads Volunteers commit one to two hours per week during the school day to come and read with a specific student. A training session and all materials are provided. We are looking for parents, neighbors, grandparents, and business people to come to Parkview and help your children learn to read.
- f). Help with gardening and landscaping
- g). "Game Grandmas and Grandpas" who can come in and teach and play cards and board games with small groups of students.

If you are available to help in any way, long or short term, please let the principal, teacher, P.T.O. president, or secretary know. We need you and feel sure you are eager to help! Please note that there are certain volunteer situations that require background checks and fingerprinting. See Volunteer Handbook for details.

Child Care Beyond the School Day

Parkview Elementary School hosts Boys and Girls Club before and after school. Care will run most school days, including during 2-hour delays. Those days that we are not in session will be announced to the families enrolled in the program. Afternoon meals will be provided through grants available to our food

service program. Morning students will have breakfast available at 8:30 a.m. See the principal for more details.

VII. SAFETY

BICYCLE SAFETY

A. Pupils in grades 3-4 may ride their bicycles to and from school with parental approval. Check to see if the route from your home is safe.

B. Pupils are strongly urged to wear helmets.

C. The bicycles are to be walked at the school crossings and on the school ground. They are not to be ridden in the parking lot or on the school grounds.

D. They are to be parked at a bicycle racks provided. Locks should be used.

E. If a child does not follow safety rules, the principal reserves the right to require the child to walk to school.

EMERGENCY INFORMATION

Parents must be sure that the school office has a current, working phone number and the name of some other person to call in case of an emergency, when the school is unable to reach the parents. Also, **if there is a change in a phone number or the emergency number, it is important and necessary that parents notify the school office at once.** The school keeps this information and it must be up-to-date at all times. Schools must be able to contact parents or other responsible adults quickly if the need arises. Parents are asked to cooperate with this emergency reference and to remember that the emergency information must be complete, accurate, and up-to-date.

In the event of an accident/injury to a child (especially a head injury), the clinic will notify parents or emergency contact persons according to the listing on the Emergency Form. If none of these people can be reached, one of the following procedures will occur:

- A note will be sent home describing the injury (minor injuries).

- The child will be transported to the hospital emergency room (major injuries)

PARKING LOT SAFETY

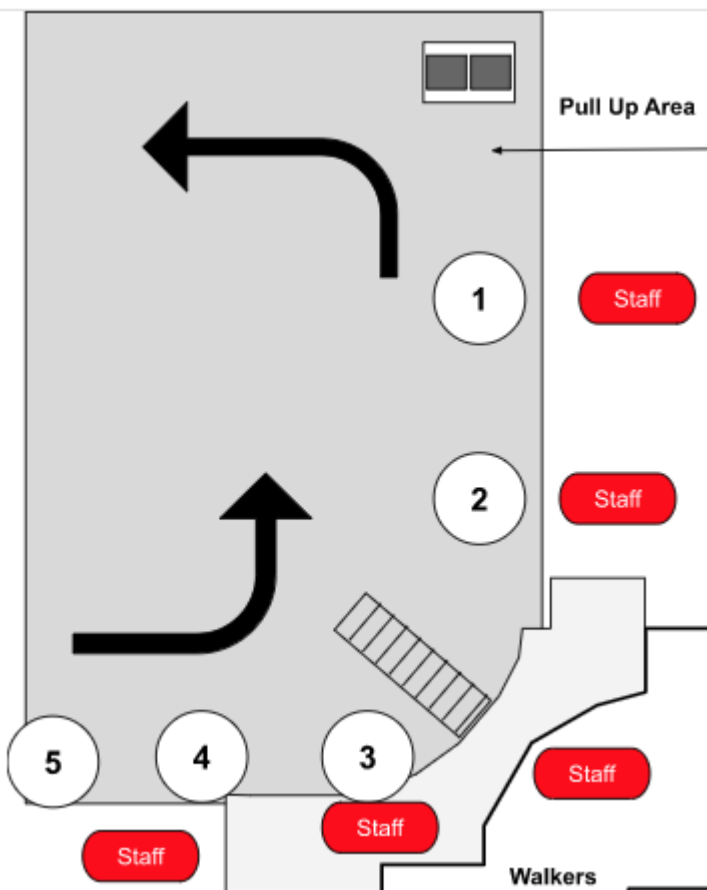
Parkview Street is strictly for dropping off and picking up our BUS children.

There is an "in" entrance and an "out" exit in our Oak Hill parking lot. If you wish to get out of the car to pick up your child or to enter the building for any reason, please follow the flow of the traffic, park your car in a space and walk to safely escort your child back to the car. In order to promote traffic safety, please cross the pick up lane ONLY at the painted crosswalk area.

Parkview Car Loop

Student Afternoon Pickup Directions

1. As you get in the line, please put the name tag with your student(s) name on it in the passenger side window or passenger side dash.
2. A staff member will direct you to a numbered cone.
3. Pull forward to the given number and your student(s) will meet you there.
4. Please stay in your car! If you need to buckle in a child, please proceed to the Pull Up Area and get out of your car at that time.
5. When you exit the parking lot, please make a right-hand turn onto Oak Hill.



If you are walking to pick up your child, please avoid bringing pets into the dismissal area. As per Board Policy, owners of pets and service animals brought on school property are liable for any harm or injury caused by the animal to other students, staff, visitors, and/or property.

Parkview Daily Schedule

6:30 a.m.	Building open to YMCA Club Students
8:00 a.m.	Main office opens
8:45 a.m.	Lobby doors open for students/breakfast will be picked up and taken to the classroom.
9:05 a.m.	School begins and those that arrive after that will be marked tardy.
3:30 p.m.	Dismissal: Bus Riders to Parkview Street; Car Riders to Parking Lot Pickup Only
6:00 p.m.	YMCA must be signed out to parents.

COMMUNITY PARTNERSHIPS AND RESOURCES

BOYS AND GIRLS CLUB OF WOOSTER - The goal of Boys and Girls Club is to enable young people, especially those that need it most, to reach their full potential as productive, caring, responsible citizens.

<http://www.bgcwooster.org/>

330-988-1616

ANAZAO COMMUNITY PARTNERS - Anazao is a private, non-profit organization providing treatment, intervention and prevention services to residents and organizations throughout Wayne and Holmes Counties.

<https://anazaocommunitypartners.org/>

330-264-9597

UNITED WAY OF WAYNE AND HOLMES COUNTIES - To Live United means to work together to solve problems in the community. United Way focuses on four core areas that will help people improve their lives and make the community better.

<https://www.uwwh.org/get-help>

330-263-6363

GOODWILL INDUSTRIES OF WAYNE AND HOLMES COUNTIES - Guided by its own local trustees, Goodwill Industries agencies are able to develop programs based on the needs of their own unique communities.

www.goodwillconnect.org/mission

330-264-1300

YMCA OF Wayne County- The YMCA of Wayne County has many programs, for Youth and Children, Silver Sneakers, Adult and Youth Sports, Aquatic Fitness Classes, Group Exercise Classes, Gymnastics, Swimming Lessons and much more. Classes for the whole family.
<http://ymcawayne.org>
330-264-3131