

MEMBERSHIP
October 1ST, 2024

GRADE	Andersen	Boevers	Cedar Ridge	Clark	Darnaby	Grove	Jarman	Jefferson	McAuliffe	Moore	Ochoa (Briarglen)	Peters	Rosa Parks	6th/7th Grade Center	8th Grade Center	9th Grade Center	HS	TOTAL
P3 (Sp. Ed.)	0	0	0	0	1	1	0	2	0	0	0	1	34					39
PK	32	44	41	43	58	43	65	53	44	21	87	38	77					646
KG	50	47	70	70	88	65	69	72	49	58	139	53	85					915
1ST	45	60	59	64	91	90	77	91	76	86	147	60	99					1045
2ND	50	68	57	68	85	79	92	84	82	69	146	76	90					1046
3RD	53	73	64	65	85	91	83	85	73	79	178	69	84					1082
4TH	62	71	61	65	91	88	98	86	74	63	119	64	85					1027
5TH	56	70	67	73	91	95	91	102	81	77	152	69	93					1117
6TH														1056				1056
7TH														1066				1066
8TH															1100			1100
9TH																1242		1242
10TH																	1156	1156
11TH																	1226	1226
12TH																	1187	1187
SITE TOTAL	348	433	419	448	590	552	575	575	479	453	968	430	647	2122	1100	1242	3569	14950
Special Education																		
Hearing Impairement/ Deaf Speech/Language	0	2	1	1	1	1	1	2	1	1	2	1	0	4	2	6	6	32
Visual Impairement	25	24	20	22	45	15	38	23	32	25	32	26	36	20	0	0	0	383
Emotional Disturbance	1	0	0	1	0	1	1	1	0	0	0	2	1	0	0	1	4	13
Orthopedic Impairement	0	0	0	0	0	0	1	1	0	3	1	0	0	3	2	6	11	28
Other Health Impairements	1	0	0	0	2	0	0	2	0	0	1	1	0	1	0	0	2	10
Specific Learning Disability	11	5	5	7	15	12	17	6	13	9	18	5	15	82	37	37	105	399
Multiple Disabilites	9	13	5	9	11	22	6	9	14	4	49	13	12	177	83	110	256	802
AUTISM	2	1	2	0	0	1	2	0	0	4	5	1	1	1	4	3	4	31
Tramatic Brain Injury	20	7	19	2	4	37	17	25	4	22	30	7	36	36	14	14	49	343
Developmental Delays	0	0	0	0	0	0	0	0	0	0	0	0	1	0	0	0	0	1
Intelluctal Disabilities	2	0	1	0	1	1	2	0	1	0	1	0	0	0	0	0	0	9
TOTAL	2	1	4	1	0	4	8	5	0	0	9	2	1	15	14	13	35	114
TOTAL	73	53	57	43	79	94	93	74	65	68	148	58	103	339	156	190	472	2165

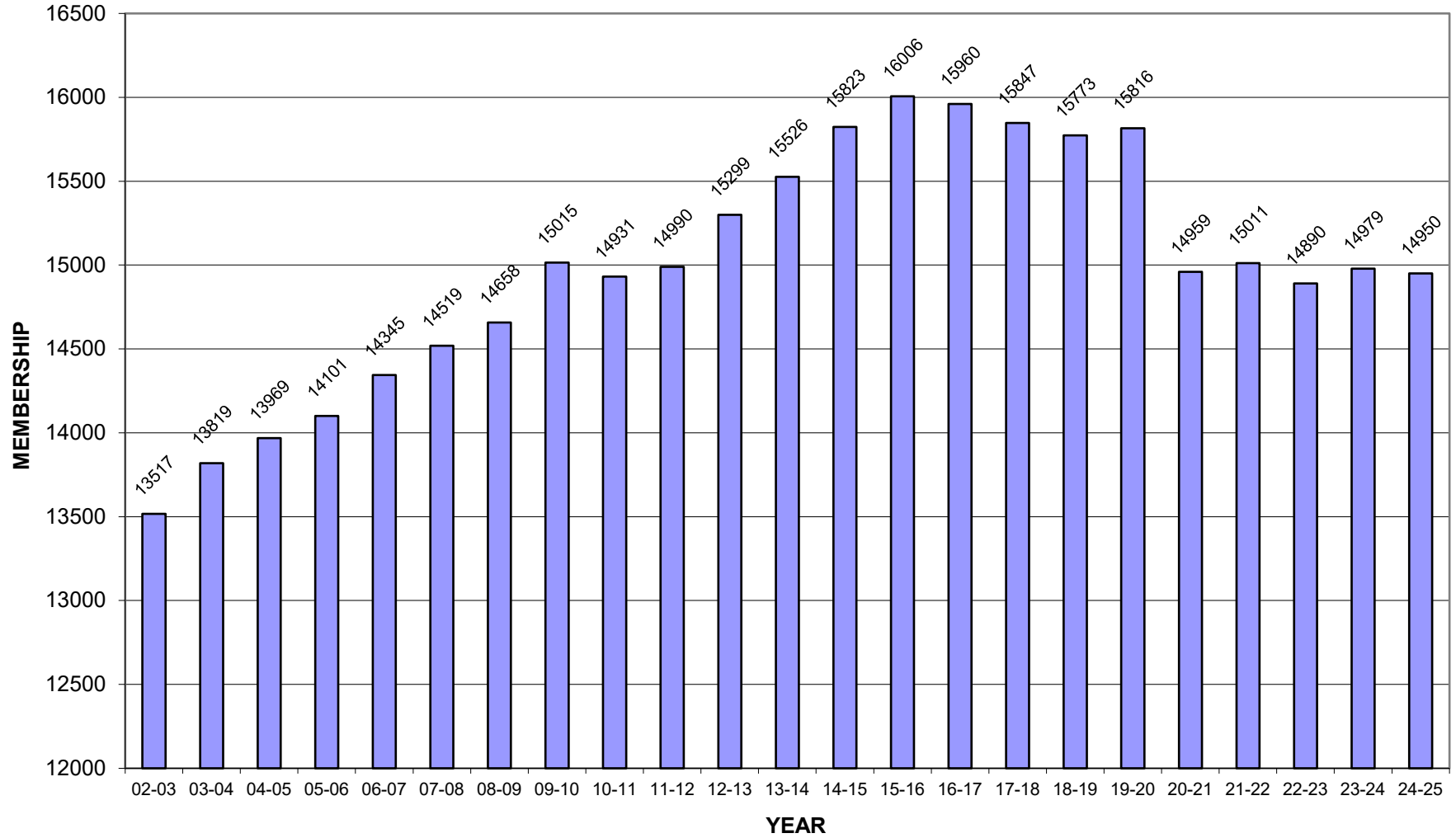
SITE ENROLLMENT
October 1ST, 2024

SCHOOL	02-03	03-04	04-05	05-06	06-07	07-08	08-09	09-10	10-11	11-12	12-13	13-14	14-15	15-16	16-17	17-18	18-19	19-20	20-21	21-22	22-23	23-24	24-25
Andersen	519	531	530	567	549	505	475	477	458	469	463	477	466	463	429	441	459	489	410	400	388	385	348
Boevers	604	659	682	656	426	442	481	552	562	539	555	558	592	580	575	612	609	468	418	420	434	433	433
Cedar Ridge	424	580	554	529	545	566	591	564	551	575	548	518	504	500	482	479	506	470	447	417	431	458	419
Cedar Ridge CL	176	0	0	0	0	0	0	0	0	0	0	0	0	0	0	0	0	0	0	0	0	0	0
Clark	178	0	0	659	702	776	556	604	603	564	623	638	609	659	672	696	674	449	448	455	403	429	448
Clark CLC	467	557	615	0	0	0	0	0	0	0	0	0	0	0	0	0	0	0	0	0	0	0	0
Darnaby	514	490	538	488	564	538	571	572	533	638	667	647	622	610	640	651	643	595	531	566	568	550	590
Grove	575	612	615	600	590	621	575	628	606	582	602	611	625	636	581	543	552	567	540	549	548	558	552
Jarman	590	608	639	607	603	606	559	520	556	584	582	601	600	591	630	583	551	621	621	607	614	533	575
Jefferson							473	515	535	547	526	576	558	554	568	545	579	583	526	543	578	576	574
McAuliffe	656	754	634	710	607	630	518	557	630	648	666	705	593	621	655	661	607	570	566	499	497	499	479
Moore	626	649	652	654	578	596	470	488	506	538	488	482	588	597	568	553	511	512	482	511	520	489	453
Ochoa (Briargler)	579	625	615	576	576	589	538	542	541	517	525	553	600	620	612	546	560	1014	962	957	907	910	968
Peters	507	577	602	615	584	587	574	567	543	526	512	500	528	496	455	463	441	420	348	401	434	422	430
Peters CLC	152	0	0	0	0	0	0	0	0	0	0	0	0	0	0	0	0	0	0	0	0	0	0
Rosa Parks					457	479	612	621	607	631	669	709	771	794	833	864	844	730	660	602	622	651	647
SUBTOTAL	6567	6642	6676	6661	6781	6935	6993	7207	7231	7358	7426	7575	7656	7721	7700	7637	7536	7488	6959	6927	6944	6893	6916
6/7th Grade	2103	2152	2194	2156	2210	2137	2121	2248	2240	2197	2266	2272	2226	2322	2306	2298	2369	2449	2332	2241	2182	2178	2123
8th Grade	1018	1059	1091	1132	1109	1139	1137	1054	1101	1092	1168	1126	1205	1173	1174	1197	1140	1218	1168	1223	1122	1185	1100
IHS (9-10)	2007	2108	2156	2220	2308	2264	2325	2343	2213	2178													
HS (11-12)	1822	1858	1852	1932	1937	2044	2082	2163	2146	2165													
9th Grade											1201	1217	1236	1301	1238	1267	1264	1217	1196	1280	1287	1204	1242
Sr. High (10-12)											3238	3336	3500	3489	3542	3448	3464	3444	3304	3340	3355	3519	3569
SUBTOTAL	6950	7177	7293	7440	7564	7584	7665	7808	7700	7632	7873	7951	8167	8285	8260	8210	8237	8328	8000	8084	7946	8086	8034
DIST TOTALS	13517	13819	13969	14101	14345	14519	14658	15015	14931	14990	15299	15526	15823	16006	15960	15847	15773	15816	14959	15011	14890	14979	14950

12-13 SY Secondary reconfiguration: IHS becomes 9th Grade Center and UHS becomes a 10-12 school.

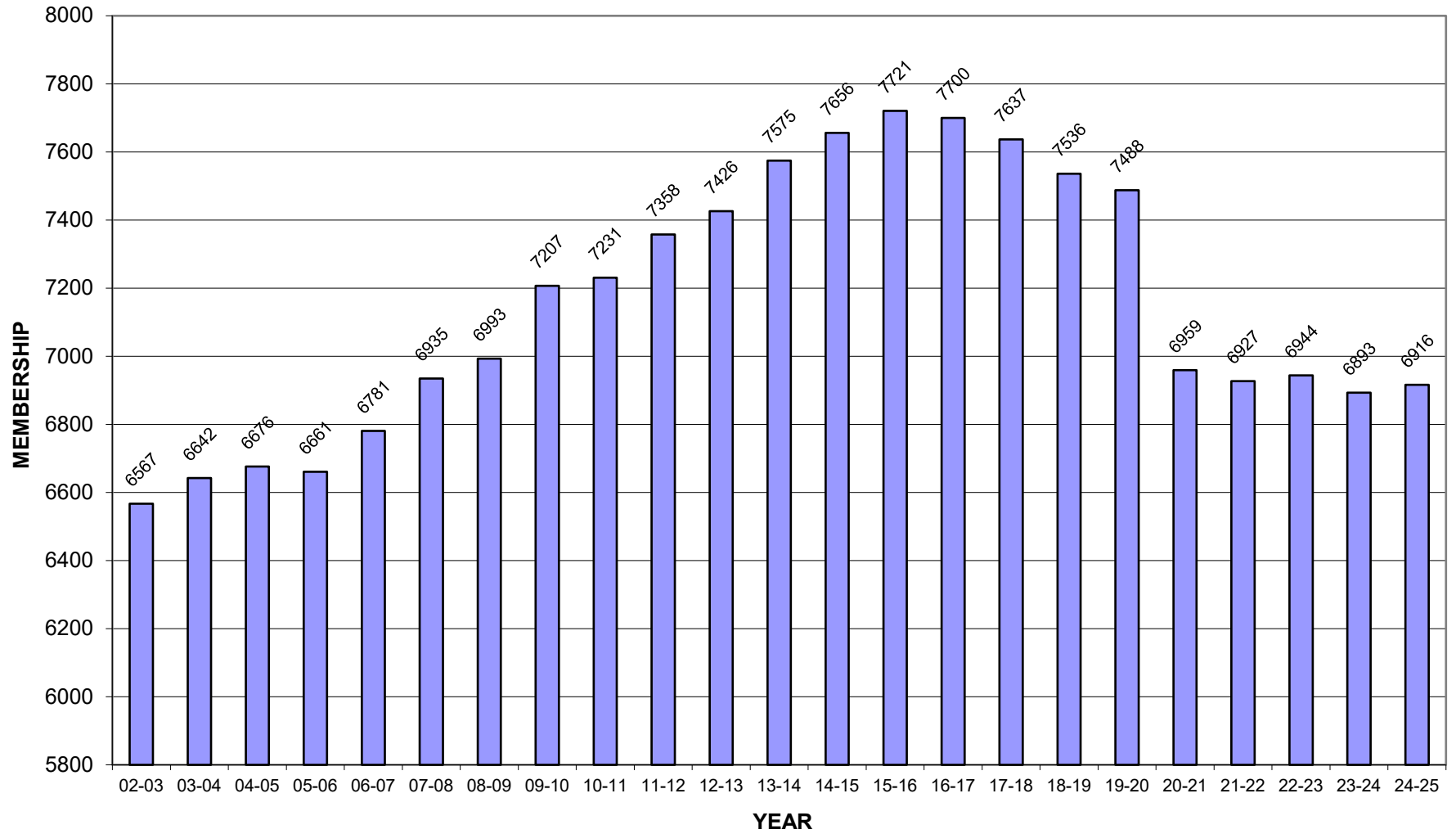
DISTRICT STUDENT POPULATION

October 1st, 2024

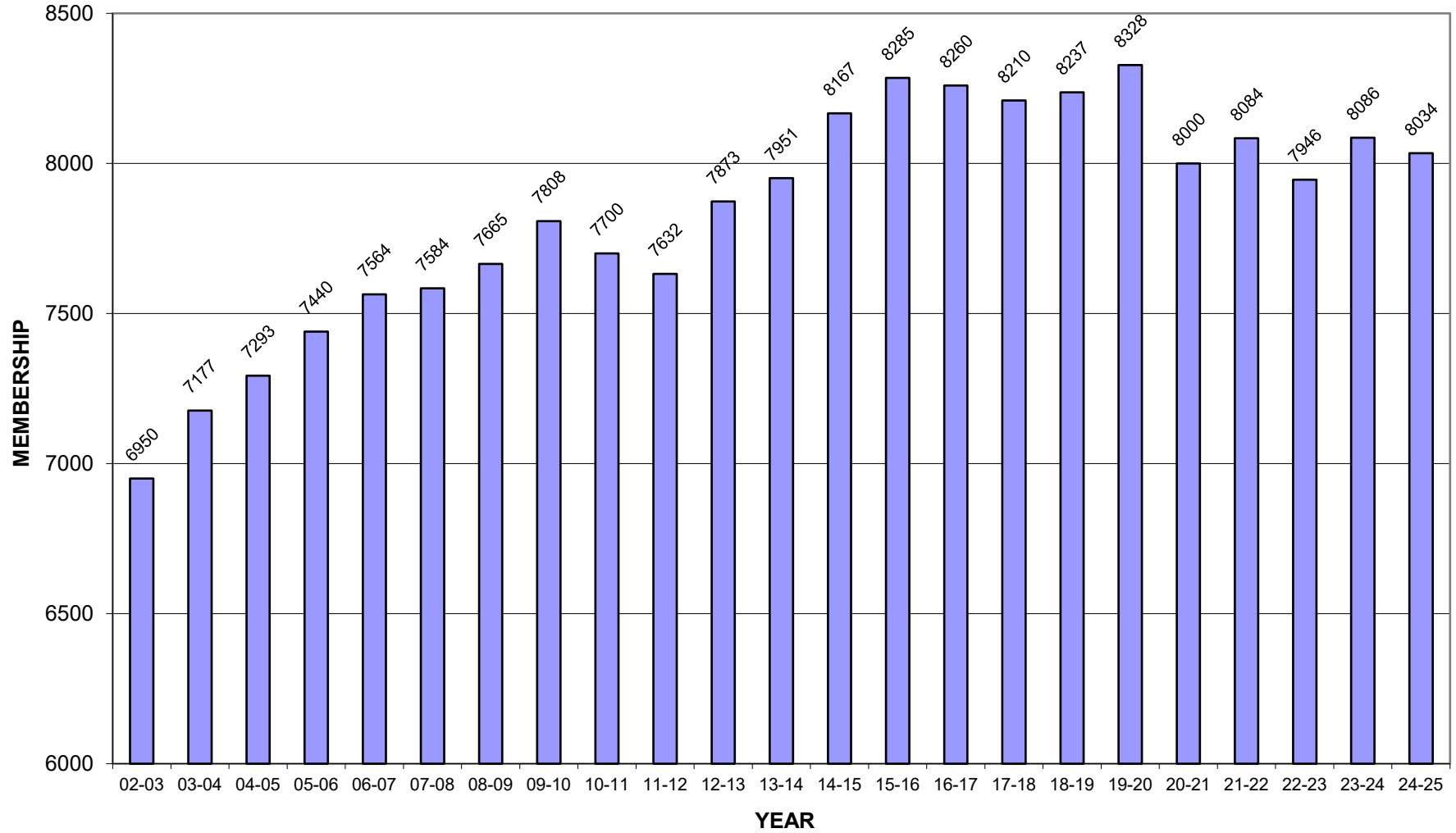


ELEMENTARY STUDENT POPULATION

October 1st, 2024



SECONDARY STUDENT POPULATION
October 1st, 2024



ENROLLMENT INCREASE/DECREASE
October 1st, 2024

SCHOOL YEAR	ENROLLMENT	STUDENT INCREASE	PERCENT CHANGE
79-80	5540		
80-81	5986	446	8.1%
81-82	6358	372	6.2%
82-83	6787	429	6.7%
83-84	7038	251	3.7%
84-85	7673	635	9.0%
85-86	8186	513	6.7%
86-87	8572	386	4.7%
87-88	8648	76	0.9%
88-89	8872	224	2.6%
89-90	9156	284	3.2%
90-91	9566	410	4.5%
91-92	10079	513	5.4%
92-93	10443	364	3.6%
93-94	10682	239	2.3%
94-95	11144	462	4.3%
95-96	11599	455	4.1%
96-97	11901	302	2.6%
97-98	12305	404	3.4%
98-99	12662	357	2.9%
99-00	12977	315	2.5%
00-01	13054	77	0.6%
01-02	13315	261	2.0%
02-03	13517	202	1.5%
03-04	13819	302	2.2%
04-05	13969	150	1.1%
05-06	14101	132	0.9%
06-07	14345	244	1.7%
07-08	14519	174	1.2%
08-09	14658	139	1.0%
09-10	15015	357	2.4%
10-11	14931	-84	-0.6%

SCHOOL YEAR	ENROLLMENT	STUDENT INCREASE	PERCENT CHANGE
11-12	14990	59	0.4%
12-13	15299	309	2.1%
13-14	15526	227	1.5%
14-15	15823	297	1.9%
15-16	16006	183	1.2%
16-17	15960	-46	-0.3%
17-18	15847	-113	-0.7%
18-19	15773	-74	-0.5%
19-20	15816	43	0.3%
20-21	14959	-857	-5.4%
21-22	15011	52	0.3%
22-23	14890	-121	-0.8%
23-24	14979	89	0.6%
24-25	14950	-29	-0.2%

Average Annual Increase = 209.11

Cumulative Increase = 9410

*PK students included in totals beginning 98-99

LONGITUDINAL HISTORY
October 1st, 2024

Grade	*03-04	*04-05	*05-06	*06-07	*07-08	*08-09	09-10	10-11	11-12	12-13	13-14	14-15	15-16	16-17	17-18	18-19	19-20	20-21	21-22	22-23	23-24	24-25	Gain/ Loss From Last Year
P3 (Sp.Ed.)	53	45	41	38	24	8	6	9	9	15	11	14	16	14	15	17	20	11	23	18	35	39	4
PK	533	576	596	570	604	645	741	751	816	830	743	755	738	764	773	802	757	650	693	719	677	646	-31
KG	926	896	874	1044	1010	1055	1066	1077	1092	1124	1157	1098	1156	1055	1065	1044	1132	996	1025	984	968	915	-53
1st	1048	1068	1045	985	1066	999	1084	1096	1106	1085	1152	1189	1135	1155	1094	1046	1071	1070	983	1046	1024	1045	21
2nd	988	1046	1088	1054	1010	1099	1037	1067	1108	1094	1123	1174	1195	1152	1141	1085	1086	1006	1092	978	1067	1046	-21
3rd	1006	959	1016	1072	1081	998	1135	1027	1058	1140	1141	1157	1220	1201	1168	1143	1091	1054	1027	1078	1000	1082	82
4th	1034	1018	965	1036	1090	1085	1027	1133	1046	1067	1166	1106	1152	1197	1208	1149	1161	1043	1054	1052	1085	1027	-58
5th	1054	1068	1036	982	1050	1104	1111	1071	1123	1069	1082	1163	1109	1162	1173	1250	1170	1129	1030	1063	1035	1117	82
6th	1102	1077	1085	1107	1014	1086	1138	1120	1064	1179	1071	1101	1165	1129	1155	1181	1247	1108	1103	1054	1075	1056	-19
7th	1048	1115	1071	1103	1117	1032	1106	1120	1129	1088	1201	1125	1157	1177	1143	1188	1202	1224	1138	1128	1103	1066	-37
8th	1064	1092	1132	1109	1141	1137	1054	1102	1097	1169	1126	1205	1173	1174	1197	1140	1218	1168	1223	1122	1185	1100	-85
9th	1115	1111	1170	1204	1146	1185	1203	1062	1137	1191	1217	1236	1301	1238	1267	1264	1217	1196	1280	1287	1204	1242	38
10th	995	1047	1050	1104	1122	1144	1147	1154	1047	1130	1169	1221	1205	1288	1183	1216	1300	1213	1234	1192	1253	1156	-97
11th	943	1020	1047	1045	1122	1078	1198	1110	1130	1064	1135	1154	1213	1104	1208	1114	1125	1133	1094	1104	1192	1226	34
12th	910	831	885	892	922	1003	962	1032	1028	1054	1032	1125	1071	1150	1057	1134	1019	958	1012	1059	1074	1187	113
TOTALS	13819	13969	14101	14345	14519	14658	15015	14931	14990	15299	15526	15823	16006	15960	15847	15773	15816	14959	15011	14890	14977	14950	-27

PK = 4 Yr Olds
P3 = Early Childhood Special Ed
KG = Kindergarten

These figures are the difference
in membership for the
cohort groups from last
year to the current year.

COHORT Group	
238	PK-KG
77	KG to 1
22	1 to 2
15	2 to 3
27	3 to 4
32	4 to 5
21	5 to 6
-9	6 to 7
-3	7 to 8
57	8 to 9
-48	9 to 10
-27	10 to 11
-5	11 to 12

RACE/ETHNICITY
October 1st, 2024

ASIAN					
School	Female	Percent	Male	Percent	Total
Andersen	20	51.3%	19	48.7%	39
Boevers	18	60.0%	12	40.0%	30
Cedar Ridge	18	35.3%	33	64.7%	51
Clark	1	20.0%	4	80.0%	5
Darnaby	23	51.1%	22	48.9%	45
Grove	9	28.1%	23	71.9%	32
Jarman	38	50.0%	38	50.0%	76
Jefferson	22	45.8%	26	54.2%	48
McAuliffe	1	12.5%	7	87.5%	8
Moore	27	48.2%	29	51.8%	56
Ochoa	15	48.4%	16	51.6%	31
Peters	19	47.5%	21	52.5%	40
Rosa Parks	28	49.1%	29	50.9%	57
6/7th	82	51.9%	76	48.1%	158
8th	33	37.0%	37	52.9%	70
9th	47	58.0%	34	42.0%	81
UHS	132	53.0%	117	47.0%	249
District	533	49.5%	543	50.5%	1076

HISPANIC/LATINO					
School	Female	Percent	Male	Percent	Total
Andersen	42	56.0%	33	44.0%	75
Boevers	134	49.6%	136	50.4%	270
Cedar Ridge	36	52.2%	33	47.8%	69
Clark	162	51.4%	153	48.6%	315
Darnaby	50	52.6%	45	47.4%	95
Grove	106	46.5%	122	53.5%	228
Jarman	83	57.6%	61	42.4%	144
Jefferson	59	44.4%	74	55.6%	133
McAuliffe	158	47.6%	174	52.4%	332
Moore	65	46.4%	75	53.6%	140
Ochoa	327	50.0%	327	50.0%	654
Peters	42	45.2%	51	54.8%	93
Rosa Parks	200	52.9%	178	47.1%	378
6/7th	457	50.8%	442	49.2%	899
8th	220	47.7%	241	52.3%	461
9th	287	50.7%	279	49.3%	566
UHS	772	49.7%	781	50.3%	1553
District	3200	50.0%	3205	50.0%	6405

RACE/ETHNICITY
October 1st. 2024

BLACK/AFRICAN AMERICAN					
School	Female	Percent	Male	Percent	Total
Andersen	19	51.4%	18	48.6%	37
Boevers	16	48.5%	17	51.5%	33
Cedar Ridge	35	53.0%	31	47.0%	66
Clark	29	50.0%	29	50.0%	58
Darnaby	27	47.4%	30	52.6%	57
Grove	63	49.2%	65	50.8%	128
Jarman	52	43.7%	67	56.3%	119
Jefferson	95	50.0%	95	50.0%	190
McAuliffe	22	35.5%	40	64.5%	62
Moore	27	64.3%	15	35.7%	42
Ochoa	58	55.8%	46	44.2%	104
Peters	20	42.6%	27	57.4%	47
Rosa Parks	47	44.8%	58	55.2%	105
6/7th	168	50.0%	168	50.0%	336
8th	78	46.2%	91	53.8%	169
9th	104	53.6%	90	46.4%	194
UHS	246	48.5%	261	51.5%	507
District	1106	49.1%	1148	50.9%	2254

AMERICAN INDIAN/ALASKA NATIVE*					
School	Female	Percent	Male	Percent	Total
Andersen	10	76.9%	3	23.1%	13
Boevers	6	60.0%	4	40.0%	10
Cedar Ridge	11	52.4%	10	47.6%	21
Clark	5	41.7%	7	58.3%	12
Darnaby	23	57.5%	17	42.5%	40
Grove	13	59.1%	9	40.9%	22
Jarman	9	50.0%	9	50.0%	18
Jefferson	4	40.0%	6	60.0%	10
McAuliffe	4	44.4%	5	55.6%	9
Moore	8	50.0%	8	50.0%	16
Ochoa	12	52.2%	11	47.8%	23
Peters	15	53.6%	13	46.4%	28
Rosa Parks	12	70.6%	5	29.4%	17
6/7th	44	54.3%	37	45.7%	81
8th	16	48.5%	17	51.5%	33
9th	20	52.6%	18	47.4%	38
UHS	66	48.5%	70	51.5%	136
District	278	52.8%	249	47.2%	527

*With the inclusion of a multi-race category, the number of Native Americans appears to have dropped as so many are being included in that category. The total number of students claiming to be all or part Native American on October 1st 2024 is 1368

RACE/ETHNICITY
October 1st. 2024

WHITE					
School	Female	Percent	Male	Percent	Total
Andersen	80	54.4%	67	45.6%	147
Boevers	27	48.2%	29	51.8%	56
Cedar Ridge	89	52.0%	82	48.0%	171
Clark	23	59.0%	16	41.0%	39
Darnaby	112	42.9%	149	57.1%	261
Grove	35	47.3%	39	52.7%	74
Jarman	59	50.9%	57	49.1%	116
Jefferson	45	44.1%	57	55.9%	102
McAuliffe	25	54.3%	21	45.7%	46
Moore	74	47.4%	82	52.6%	156
Ochoa	34	37.8%	56	62.2%	90
Peters	89	57.4%	66	42.6%	155
Rosa Parks	21	47.7%	23	52.3%	44
6/7th	209	47.6%	230	52.4%	439
8th	126	51.0%	121	49.0%	247
9th	113	47.3%	126	52.7%	239
UHS	392	49.1%	406	50.9%	798
District	1553	48.8%	1627	51.2%	3180

NATIVE HAWAIIAN/PACIFIC ISLANDER					
School	Female	Percent	Male	Percent	Total
Andersen	0	0.0%	0	0.0%	0
Boevers	0	0.0%	0	0.0%	0
Cedar Ridge	0	0.0%	0	0.0%	0
Clark	0	0.0%	0	0.0%	0
Darnaby	0	0.0%	0	0.0%	0
Grove	0	0.0%	0	0.0%	0
Jarman	0	0.0%	3	0.0%	3
Jefferson	3	50.0%	3	0.0%	6
McAuliffe	0	0.0%	0	0.0%	0
Moore	1	100.0%	0	0.0%	1
Ochoa	6	100.0%	0	0.0%	6
Peters	0	0.0%	0	0.0%	0
Rosa Parks	3	75.0%	1	25.0%	4
6/7th	3	42.9%	4	57.1%	7
8th	3	0.0%	1	25.0%	4
9th	4	80.0%	1	20.0%	5
UHS	5	41.7%	7	58.3%	12
District	28	58.3%	20	41.7%	48

RACE/ETHNICITY
October 1st, 2024

MULTI-RACE					
School	Female	Percent	Male	Percent	Total
Andersen	21	56.8%	16	43.2%	37
Boevers	15	44.1%	19	55.9%	34
Cedar Ridge	21	51.2%	20	48.8%	41
Clark	10	52.6%	9	47.4%	19
Darnaby	52	56.5%	40	43.5%	92
Grove	35	51.5%	33	48.5%	68
Jarman	48	48.5%	51	51.5%	99
Jefferson	48	55.8%	38	44.2%	86
McAuliffe	12	54.5%	10	45.5%	22
Moore	19	45.2%	23	54.8%	42
Ochoa	30	50.0%	30	50.0%	60
Peters	36	53.7%	31	46.3%	67
Rosa Parks	14	33.3%	28	66.7%	42
6/7th	109	53.7%	94	46.3%	203
8th	57	49.1%	59	50.9%	116
9th	45	37.8%	74	62.2%	119
UHS	162	51.3%	154	48.7%	316
District	734	50.2%	729	49.8%	1463

RACE/ETHNICITY
October 1st, 2024

DISTRICT															
SCHOOL	ASIAN	Percent	HISPANIC/ LATINO	Percent	BLACK/ AFRICAN AMERICAN	Percent	AMERICAN INDIAN/ ALASKA NATIVE	Percent	WHITE	Percent	NATIVE HAWAIIAN/ PACIFIC ISLANDER	Percent	MULTI- RACE	Percent	TOTAL
Andersen	39	11.2%	75	21.6%	37	10.6%	13	3.7%	147	42.2%	0	0.0%	37	10.6%	348
Boevers	30	6.9%	270	62.4%	33	7.6%	10	2.3%	56	12.9%	0	0.0%	34	7.9%	433
Cedar Ridge	51	12.2%	69	16.5%	66	15.8%	21	5.0%	171	40.8%	0	0.0%	41	9.8%	419
Clark	5	1.1%	315	70.3%	58	12.9%	12	2.7%	39	8.7%	0	0.0%	19	4.2%	448
Darnaby	45	7.6%	95	16.1%	57	9.7%	40	6.8%	261	44.2%	0	0.0%	92	15.6%	590
Grove	32	5.8%	228	41.3%	128	23.2%	22	4.0%	74	13.4%	0	0.0%	68	12.3%	552
Jarman	76	13.2%	144	25.0%	119	20.7%	18	3.1%	116	20.2%	3	0.5%	99	17.2%	575
Jefferson	48	8.4%	133	23.2%	190	33.1%	10	1.7%	102	17.8%	6	1.0%	86	15.0%	574
McAuliffe	8	1.7%	332	69.3%	62	12.9%	9	1.9%	46	9.6%	0	0.0%	22	4.6%	479
Moore	56	12.4%	140	30.9%	42	9.3%	16	3.5%	156	34.4%	1	0.2%	42	9.3%	453
Ochoa	31	3.2%	654	67.6%	104	10.7%	23	2.4%	90	9.3%	6	0.6%	60	6.2%	968
Peters	40	9.3%	93	21.6%	47	10.9%	28	6.5%	155	36.0%	0	0.0%	67	15.6%	430
Rosa Parks	57	8.8%	378	58.4%	105	16.2%	17	2.6%	44	6.8%	4	0.6%	42	6.5%	647
6/7th	158	7.4%	899	42.3%	336	15.8%	81	3.8%	439	20.7%	7	0.3%	203	9.6%	2123
8th	70	6.4%	461	41.9%	169	15.4%	33	3.0%	247	22.5%	4	0.4%	116	10.5%	1100
9th	81	6.5%	566	45.6%	194	15.6%	38	3.1%	239	19.2%	5	0.4%	119	9.6%	1242
UHS	249	7.0%	1553	43.5%	507	14.2%	136	3.8%	798	22.4%	12	0.3%	316	8.9%	3569
DISTRICT	1076	7.2%	6405	42.8%	2254	15.1%	527	3.5%	3180	21.3%	48	0.3%	1463	9.8%	14950

DISTRICT RACE/ETHNICITY SUMMARY
October 2nd, 2023

SCHOOL	ASIAN											HISPANIC/LATINO											BLACK/AFRICAN AMERICAN										
	15-16	16-17	17-18	18-19	19-20	20-21	21-22	22-23	23-24	24-25	+OR-	15-16	16-17	17-18	18-19	19-20	20-21	21-22	22-23	23-24	24-25	+OR-	15-16	16-17	17-18	18-19	19-20	20-21	21-22	22-23	23-24	24-25	+OR-
Andersen	77	67	67	64	78	66	63	59	51	39	-12	54	58	67	59	72	66	71	72	76	75	1	39	31	27	41	45	37	31	37	40	37	3
Boevers	46	45	62	49	36	29	31	35	33	30	-3	287	311	324	336	258	245	251	260	262	270	-8	94	86	71	68	48	42	40	32	29	33	-4
Cedar Ridge	30	30	39	38	40	36	31	32	45	51	6	47	43	52	62	60	59	58	69	69	69	0	35	31	34	48	43	59	46	57	64	66	-2
Clark	15	14	10	7	5	6	8	10	13	5	-8	358	374	366	373	262	297	289	254	271	315	-44	132	112	126	120	69	59	67	51	60	58	2
Darnaby	24	25	25	32	26	25	31	37	37	45	8	62	73	79	71	67	77	83	78	76	95	-19	51	56	56	62	56	51	55	56	60	57	3
Grove	20	22	26	33	41	36	34	34	34	32	-2	185	193	179	198	203	187	205	200	226	228	-2	133	126	109	112	118	109	123	120	110	128	-18
Jarman	67	81	87	96	98	97	75	67	73	76	3	114	141	107	117	124	112	126	119	107	144	-37	135	135	118	106	123	138	146	149	115	119	-4
Jefferson	50	56	55	62	68	67	57	56	51	48	-3	148	148	126	144	145	121	109	117	123	133	-10	90	100	108	111	125	121	144	165	193	190	3
McAuliffe	10	30	25	19	18	16	12	15	12	8	-4	410	429	399	379	332	352	313	330	339	332	7	66	63	77	69	86	79	64	62	62	62	0
Moore	86	80	75	73	79	75	73	66	62	56	-6	97	103	103	111	116	116	132	152	154	140	14	70	57	56	47	55	51	56	57	48	42	6
Ochoa	26	23	18	19	28	29	23	19	23	31	8	326	342	308	310	611	608	630	605	612	654	-42	66	79	69	74	121	116	106	102	98	104	-6
Peters	27	23	22	19	21	22	25	25	30	40	10	82	73	76	66	64	69	78	88	81	93	-12	47	30	30	35	34	29	47	44	43	47	-4
Rosa Parks	49	60	52	61	46	47	63	56	49	57	8	476	476	446	452	366	345	307	334	354	378	-24	93	120	153	146	132	111	103	96	110	105	5
6/7th	168	169	132	140	147	149	163	155	150	158	8	723	785	791	878	952	937	917	887	884	899	-15	356	335	359	358	342	352	335	326	368	336	32
8th	76	84	92	69	65	78	74	81	83	70	-13	362	365	417	403	469	468	491	463	502	461	41	182	175	182	180	192	162	176	178	184	169	15
IHS (9-10)/9th	99	87	81	97	68	63	81	74	86	81	-5	389	444	401	458	461	473	515	554	534	566	-32	206	185	183	205	186	193	189	183	180	194	-14
UHS	245	269	259	261	266	251	244	227	229	249	20	887	976	1039	1103	1189	1181	1272	1311	1455	1553	-98	540	541	510	543	554	514	525	514	510	507	3
DISTRICT	1115	1165	1127	1139	1130	1092	1088	1048	1061	1076	15	5007	5334	5280	5520	5751	5713	5847	5893	6125	6405	-280	2335	2262	2268	2325	2329	2223	2253	2229	2274	2254	20
Percent of Total School Enrollment	7.0%	7.3%	7.1%	7.2%	7.1%	7.3%	7.2%	7.0%	7.1%	7.2%		31.3%	33.4%	33.3%	35.0%	36.4%	38.2%	39.0%	39.6%	40.9%	42.8%		14.6%	14.2%	14.3%	14.7%	14.7%	14.9%	15.0%	15.0%	15.2%	15.1%	

12-13 SY Secondary reconfiguration: IHS becomes 9th Grade Center and UHS becomes a 10-12 school.

DISTRICT RACE/ETHNICITY SUMMARY
October 1st, 2024

MULTI-RACE											
SCHOOL	15-16	16-17	17-18	18-19	19-20	20-21	21-22	22-23	23-24	24-25	+OR-
Andersen	34	32	45	47	51	42	42	37	32	37	0
Boevers	47	40	44	36	36	31	33	30	35	34	4
Cedar Ridge	54	58	67	56	69	54	61	62	58	41	-21
Clark	45	46	62	50	33	39	26	31	26	19	-12
Darnaby	68	78	91	87	80	76	72	73	78	92	19
Grove	73	59	66	58	64	58	69	75	65	68	-7
Jarman	76	74	72	69	71	84	79	114	92	99	-15
Jefferson	49	56	65	79	80	87	78	103	84	86	-17
McAuliffe	32	42	33	38	48	33	44	26	31	22	-4
Moore	57	59	75	52	46	49	47	39	41	42	3
Ochoa	47	41	41	47	77	69	60	57	59	60	3
Peters	50	48	54	55	63	44	39	61	63	67	6
Rosa Parks	42	58	61	45	45	35	41	41	45	42	1
6/7th	170	176	222	230	238	221	229	236	213	203	-33
8th	81	90	97	100	119	124	110	104	122	116	12
9th	85	83	92	95	101	125	115	124	102	119	-5
UHS	247	262	289	270	267	281	279	308	333	316	8
DISTRICT	1257	1302	1476	1414	1488	1452	1424	1521	1479	1463	-58

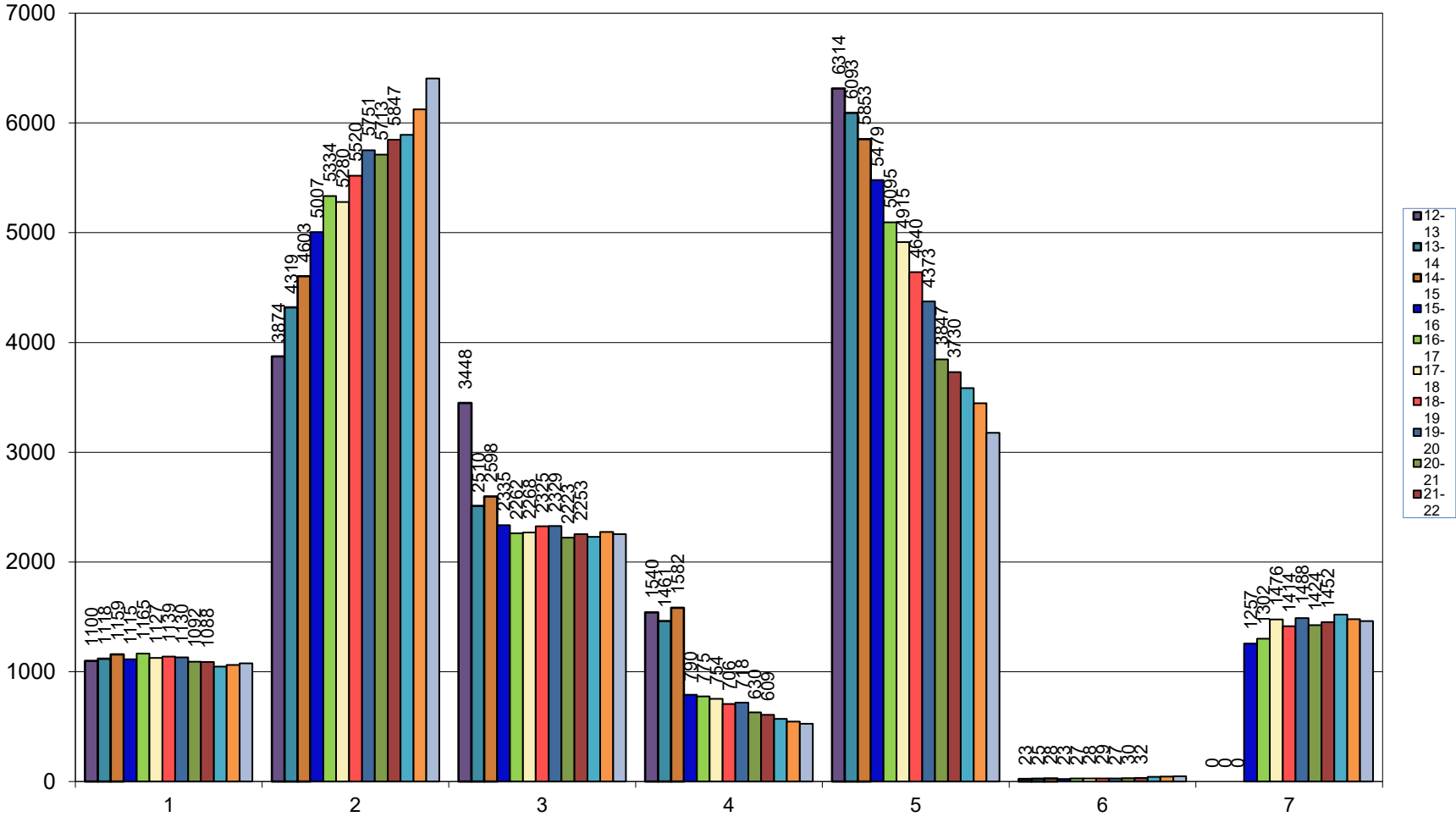
TOTAL											
SCHOOL	15-16	16-17	17-18	18-19	19-20	20-21	21-22	22-23	23-24	24-25	+OR-
Andersen	463	429	441	459	489	410	400	388	385	348	-40
Boevers	580	575	612	609	468	418	420	434	433	433	-1
Cedar Ridge	500	482	479	506	470	447	417	431	458	419	-12
Clark	659	672	696	674	449	448	455	403	429	448	45
Darnaby	610	640	651	643	595	531	566	568	550	590	22
Grove	636	581	543	552	567	540	549	548	558	552	4
Jarman	591	630	583	551	621	621	607	614	533	575	-39
Jefferson	554	568	545	579	583	526	543	578	575	574	-4
McAuliffe	621	655	661	607	570	566	499	497	499	479	-18
Moore	597	569	553	511	512	482	511	520	489	453	-67
Ochoa	620	612	546	560	1014	962	957	907	911	968	61
Peters	496	454	464	441	420	348	401	434	422	430	-4
Rosa Parks	794	833	864	844	730	660	602	622	651	647	25
6/7th	2322	2306	2298	2369	2449	2332	2241	2182	2178	2123	-59
8th	1173	1174	1197	1140	1218	1168	1223	1122	1185	1100	-22
9th	1301	1238	1267	1264	1217	1196	1280	1287	1204	1242	-45
UHS	3489	3542	3448	3464	3444	3304	3340	3355	3519	3569	214
DISTRICT	16006	15960	15848	15773	15816	14959	15011	14890	14979	14950	60

Percent of Total											
School Enrollment	7.9%	8.2%	9.3%	9.0%	9.4%	9.7%	9.5%	10.2%	9.9%	9.8%	

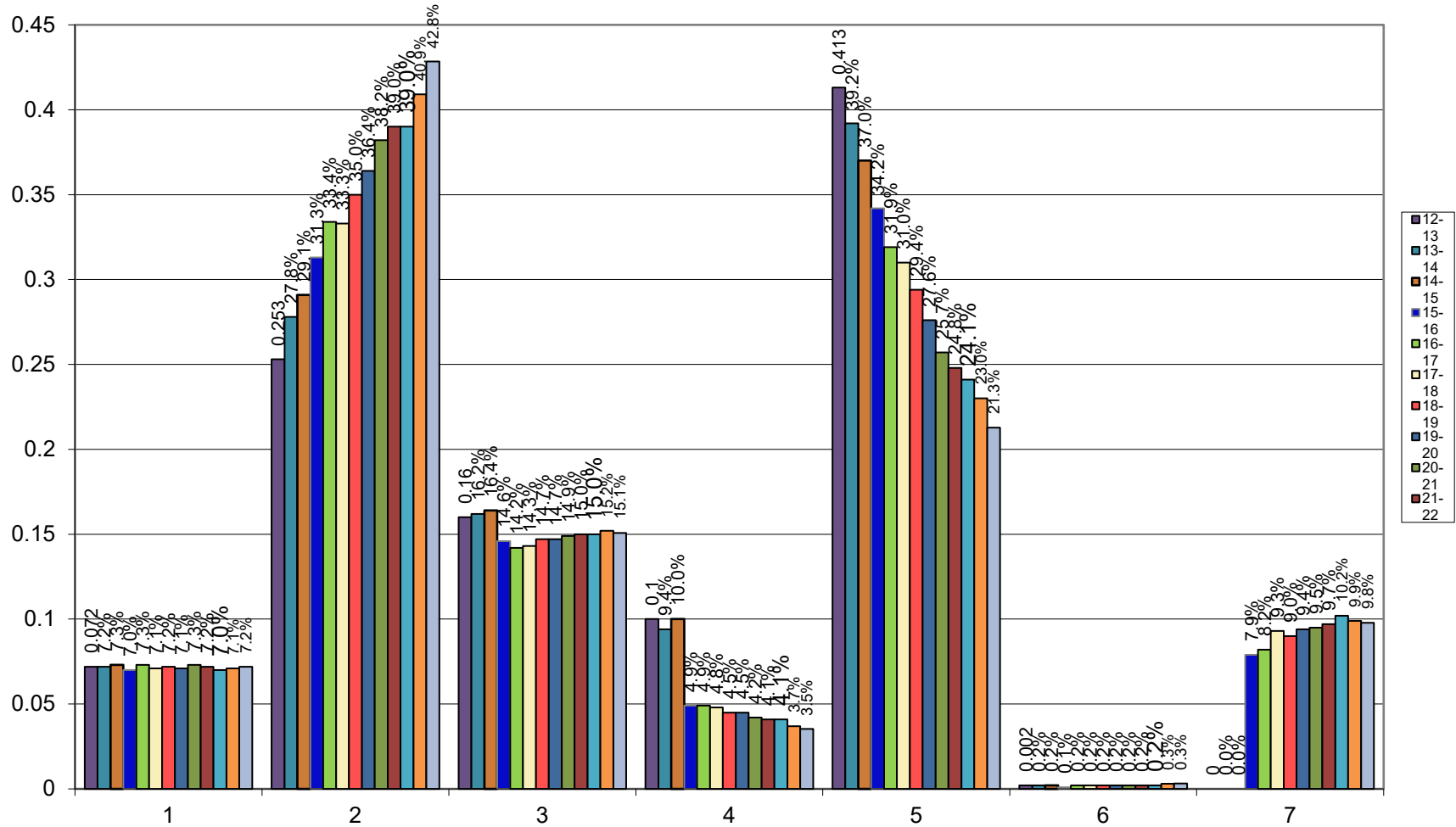
	12-13	13-14	14-15	15-16	16-17	17-18	18-19	19-20	20-21	21-22	22-23	23-24	24-25
Asian	1100	1118	1159	1115	1165	1127	1139	1130	1092	1088	1048	1061	1076
Hispanic/Latino	3874	4319	4603	5007	5334	5280	5520	5751	5713	5847	5893	6125	6405
Black/African American	3448	2510	2598	2335	2262	2268	2325	2329	2223	2253	2229	2274	2254
American Indian/Alaska Native	1540	1461	1582	790	775	754	706	718	630	609	571	547	527
White	6314	6093	5853	5479	5095	4915	4640	4373	3847	3730	3585	3447	3178
Native Hawaiian/Pacific Islander	23	25	28	23	27	28	29	27	30	32	43	46	48
Multiple Races	0	0	0	1257	1302	1476	1414	1488	1424	1452	1521	1479	1462
TOTAL	16299	15526	15823	16006	15960	15848	15773	15816	14959	15011	14890	14979	14950

	12-13	13-14	14-15	15-16	16-17	17-18	18-19	19-20	20-21	21-22	22-23	23-24	24-25
Asian	0.072	0.072	0.073	0.07	0.073	0.071	0.072	0.071	0.073	0.072	0.07	0.071	0.072
Hispanic/Latino	0.253	0.278	0.291	0.313	0.334	0.333	0.35	0.364	0.382	0.39	0.39	0.409	0.428
Black/African American	0.16	0.162	0.164	0.146	0.142	0.143	0.147	0.147	0.149	0.15	0.15	0.152	0.151
American Indian/Alaska Native	0.1	0.094	0.1	0.049	0.049	0.048	0.045	0.045	0.042	0.041	0.041	0.037	0.035
White	0.413	0.392	0.37	0.342	0.319	0.31	0.294	0.276	0.257	0.248	0.241	0.23	0.213
Native Hawaiian/Pacific Islander	0.002	0.002	0.002	0.001	0.002	0.002	0.002	0.002	0.002	0.002	0.002	0.003	0.003
Multiple Races	0	0	0	0.079	0.082	0.093	0.09	0.094	0.095	0.097	0.102	0.099	0.098

District Ethnicity October 1st, 2024

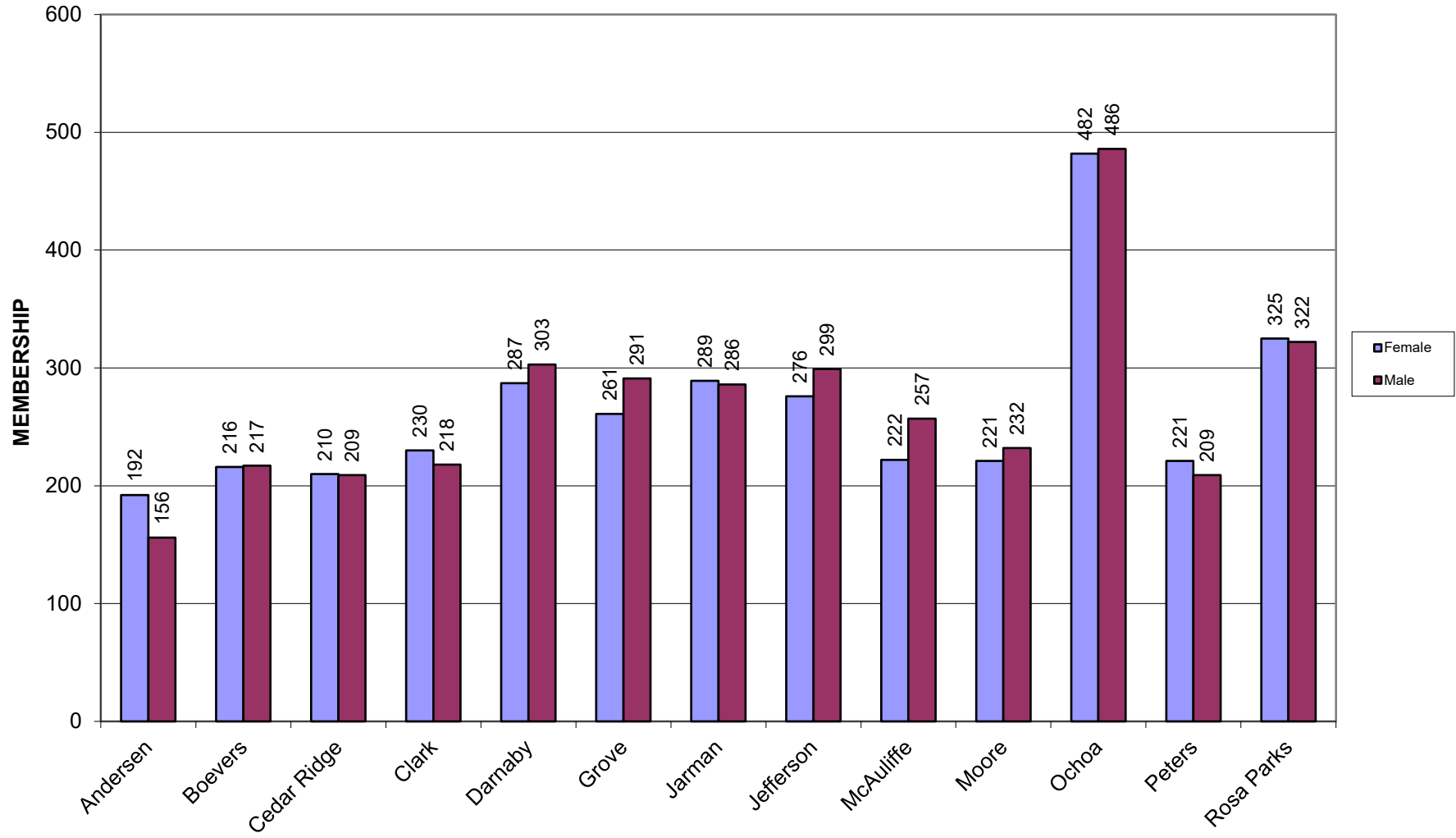


DISTRICT ETHNICITY October 1st, 2024

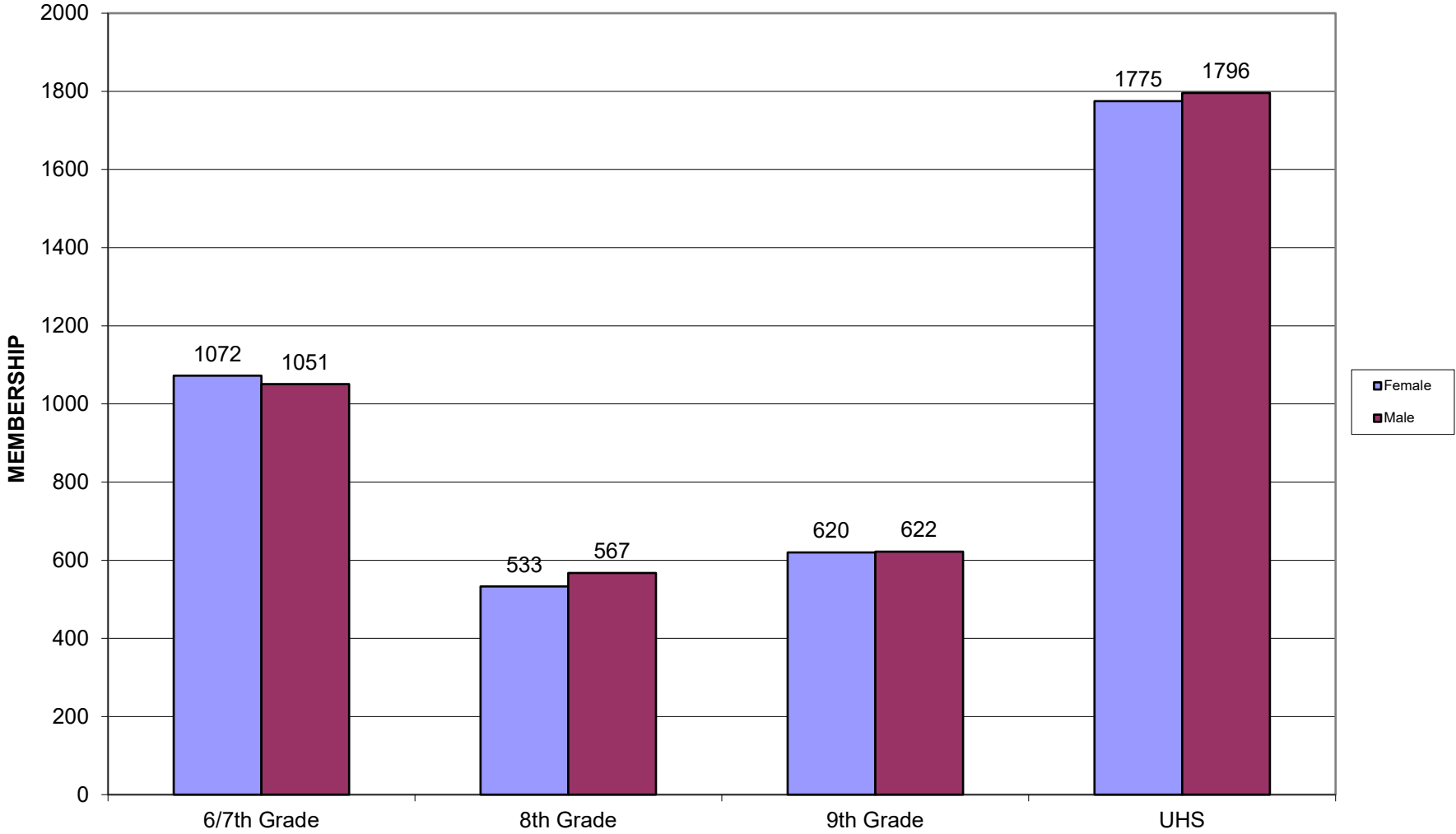


ELEMENTARY GENDER

October 1st, 2024



SECONDARY GENDER
October 1st, 2024

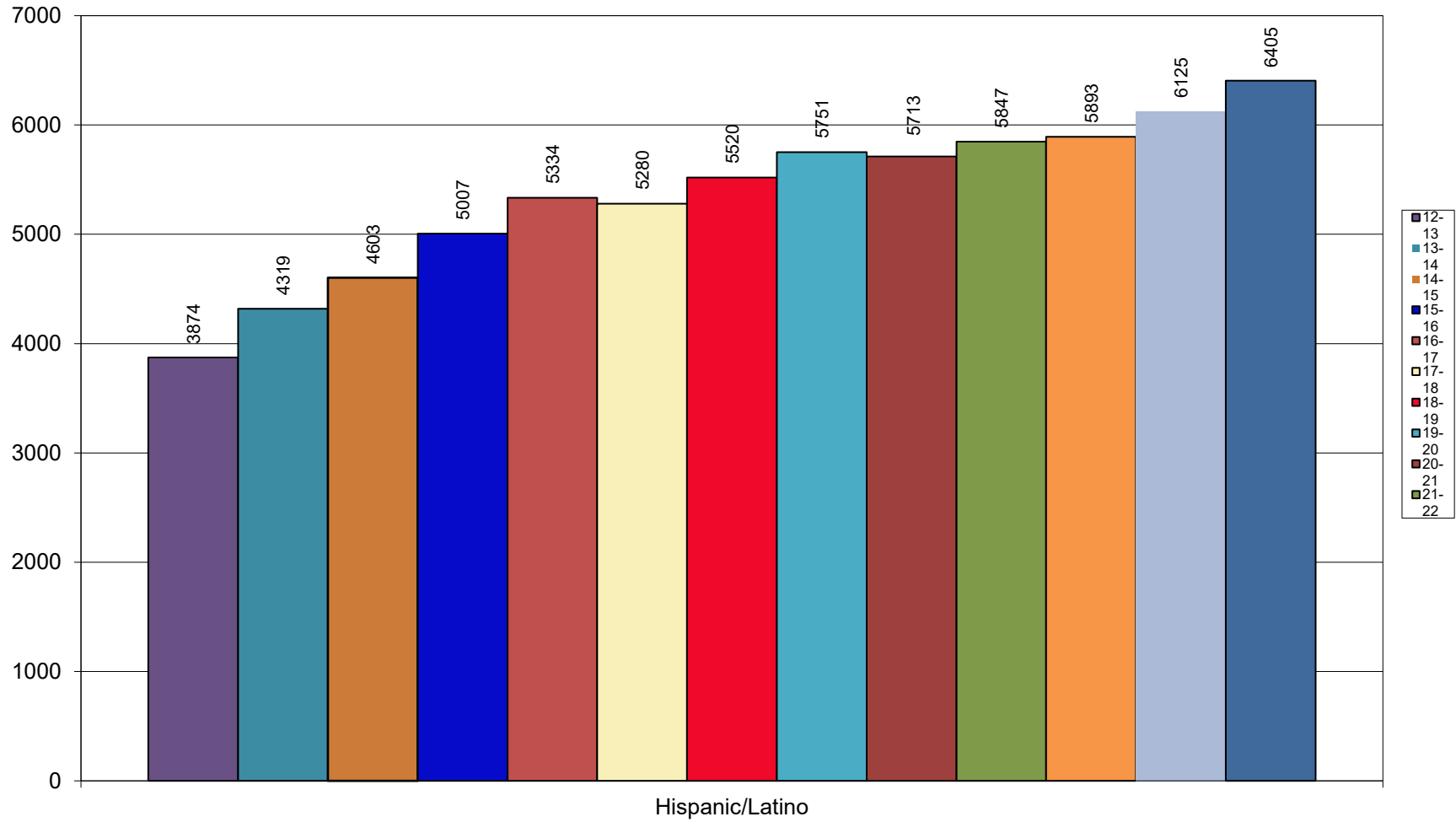


DISTRICT GENDER ENROLLMENT BY SITE

October 1st, 2024

School	Female	Male	Total
Andersen	192	156	348
Boevers	216	217	433
Cedar Ridge	210	209	419
Clark	230	218	448
Darnaby	287	303	590
Grove	261	291	552
Jarman	289	286	575
Jefferson	276	299	575
McAuliffe	222	257	479
Moore	221	232	453
Ochoa	482	486	968
Peters	221	209	430
Rosa Parks	325	322	647
6/7th Grade	1072	1051	2123
8th Grade	533	567	1100
9th Grade	620	622	1242
UHS	1775	1796	3568
TOTAL	7432	7521	14950

Hispanic Ethnicity Regardless of Race October 1st, 2024



Hispanic Ethnicity Regardless of Race October 1st, 2024

