



Roseville Area Schools
Excellence, Innovation & Equity in All We Do.

EARLY CHILDHOOD

Your Guide to Winter/Spring 2025 ECFE Classes & Activities

- p. 2 Family Drop In & Play
- p. 9 Registration Details
- p. 12 Helpful Resources
- p. 14 Toy Lending Library
- p. 15 Advisory Council
- p. 16 Baby Shower Event



Registration begins
on December 10, 2024!

To register or learn more, call
651-487-4378, visit www.isd623.org/ECFE
or scan this QR code!

Welcome
Txais

တူဂါလိာ်မုာ်သုကိးဂါ

Soo dhawaada
Bienvenidos

FAMILY DROP IN & PLAY

Great **FREE** activity for your young family!

Monday	Tuesday	Wednesday	Thursday	Friday	Saturday
	8:45-10:00am Dates: Jan 14 - May 13 0-5 years Non-separating Prince of Peace Church 2561 Victoria St FREE <i>No class on 3/11</i>	8:45-10:00am Dates: Jan 15 - May 14 0-5 years Non-separating Prince of Peace Church 2561 Victoria St FREE <i>No class on 3/12</i>			10:15-11:30am Dates: Jan 18 - Apr 12 0-5 years Non-separating Anpétu Téča 1910 County Rd B W FREE <i>No class on 2/15, 3/8, 3/15</i>

Family Drop In & Play

The entire class is devoted to parent and child activities including dramatic play, sensory experiences, gym play, science, art projects, and more. Each week will be filled with many creative and engaging learning activities for the whole family!
No fee or registration necessary! Just come and join the fun!

फ्यामिलि ड्रप इन एन्ड प्ले

नाटकिय खेलहरू, ऐन्द्रिक अनुभवहरू, जिम खेल, विज्ञान, कला प्रोजेक्ट, र अन्य धेरै कुरा लगायत सम्पूर्ण कक्षा परिवार र बालबालिका सम्बन्धी क्रियाकलापहरूमा समर्पित छ। हरेक हप्ता सम्पूर्ण परिवारको लागि विभिन्न सृजनात्मक र सहभागीमूलक क्रियाकलापहरू हुनेछन्। कुनै शुल्क तिर्नु वा दर्ता गर्नुपर्ने आवश्यक छैन! आउनुहोस् अनि रमाइलोमा सहभागी हुनुहोस्!

တံတိဗီဗီဟဲဟးဒီးဂဲလိက်္ကွ

တၢ်မၤလိအံၤ တၢ်ဟ့ၣ်အိၤ လၢမိၢ်ပာ်ဒီးဖိသၣ်တဖၣ်အတၢ်ဟူးတၢ်ဂဲအဂီၢ် ဒီးပၣ်ယုၣ်ဒီးတၢ်ဟူးတၢ်ဂဲတဖၣ် လၢအမ့ၢ် တၢ်ဂဲဒိတၢ်ဂီၤမူ, တၢ်လဲၤဒိဖျိလၢဘၣ်ဃးဒီးစ့ၣ်အတၢ်သ့ၣ်ညါ, နီၢ်ဒိတၢ်ဟူးဂဲလိက်္ကွအဆၢကတီၢ်, ဝဲအ့ၣ်, နွဲလၢတၢ်တိက်ျၢတဖၣ်ဒီးအဂ့ၢ်အဂၢတဖၣ်န့ၣ်လီၤ! တလိၣ်ဟ့ၣ်တၢ်အဘူးအလဲဒီး မ့တမ့ၢ်တလိၣ် တၢ်ဆဲးလီၤမံၤဘၣ်! ထဲဒၣ်ဟဲဒီးပာ်ယုၣ်မၤသကိးတၢ်သ့ၣ်ဖုံသးညီတက့ၢ်!

Waa Goob u Furan Qoyska, ayna ku Ciyaari Karaan “Family Drop In & Play”

Galaaskaan waxaa loogu talagalay in waalidiinta iyo carruurta ay ku helaan fursad ay ku ciyaaraan, riwaayado ku sameeyaan, dareemayaashooda ku isticmaalaan, “sensory experiences,” ku jimicsadaan, cilmiga sayniska, farshaxanka iyo waxyaabo kalena ay bartaan. Todobaad kasta waxaa la qabandoonaa barnaamijyo kobciya hal-abuurka, qoyska oo dhanna uu ku madadaasho! Lacag lagu soo galo iyo mid is-diiwaan gelin lagaagama baahna! Imow oo ka geybgalka madaaadalada!

Visitas y Juegos de Familia

¡Esta clase se encuentra comprometida con actividades entre padres e hijos que incluyen juegos teatrales, experiencias sensoriales, tiempo de gimnasia, ciencias, proyectos de arte, y más! ¡Cada semana estara matricula! ¡Simplemente venga y participe de la diversión!

CONTENTS

p. 2	Family Drop In & Play
p. 3	Locations & Contact Information
p. 4	Welcome!
p. 5	Types of ECFE Classes
p. 6 - 7	Winter/Spring 2025 Class Schedule
p. 8	Class Descriptions
p. 9	Registration & Fees
p. 10	How to Register
p. 11	Registration Form
p. 12	Helpful Resources
	One-to-One Visits
	Refer a Child to Help Me Grow
	Are You in Our Database?
p. 13	Early Childhood Screening
p. 14	Toy Lending Library
p. 15	Advisory Council
p. 16	Baby Shower Event

CONTACT

Early Childhood - Main Office Phone
651.487.4378

Tamy Reese
Early Childhood Program Supervisor
651.604.3517
Tamy.Reese@isd623.org

Janina Haug
Early Childhood Lead Manager
651.604.3771
Janina.Haug@isd623.org

Lizann Villatoro
Early Childhood Social/Emotional Support Manager
651-604-3738
Lizann.Villatoro@isd623.org

Melissa Brady
Early Childhood Outreach Manager
651-604-3578
Melissa.Brady@isd623.org

OUR PROGRAM

- Provides support for a child's optimal physical, intellectual, social, and emotional development during the important first years of life
- Promotes informed, realistic attitudes and expectations about raising children
- Offers child development information and a variety of parenting techniques
- Provides support to parents in their efforts in raising children
- Helps create effective communication in families
- Provides information on resources available in the community
- Offers day classes, evening and Saturday classes, drop in and play classes, early childhood screening, Pre-K classes for 3-5 year olds, parenting classes, home visits, and more!

LOCATIONS

Early Childhood Center at Harambee
30 County Road B East, Maplewood, MN 55117

Early Childhood Center at Anpétu Téča
1910 County Road B West, Roseville, MN 55113

Early Childhood Center at Parkview
701 County Road B West, Roseville, MN 55113

Prince of Peace Church
2561 Victoria St, Roseville, MN 55113

EARLY CHILDHOOD

All families are welcome!

Cultural Liaisons

African American.....	Sydni Dykes.....	651.503.9319
	K'Lynn Lewis.....	651.239.2826
American Indian.....	Savannah Carroll-Rojas.....	651.332.6513
Hmong.....	Maiden Lee.....	651.210.7821
Karen.....	Mya Phyu.....	651.307.4475
Latinx.....	Enrique Aguilar Vazquez.....	651.233.9126
Bhutanese/Nepali.....	Indira Kharel.....	651.307.7471
Somali.....	Kowthar Ismail.....	651.322.0468

Giving your family a great start!

We provide support and educational opportunities for all children birth – kindergarten entry.

तपाईंको परिवारलाई एउटा राम्रो सुरुवात प्रदान गर्दै! जन्मेका सम्पूर्ण बालबालीकाहरूका लागि हामी सहयोग र शिक्षा सम्बन्धी अवसर दिन्छौं – किन्डरगार्टन प्रवेश।

ဟ့ၣ်နဟံၣ်ဖိလီဖိလၢ တၢ်စးထီၣ်လၢအဂ့ၢ်လီၤ!

ပဟ့ၣ်တၢ်မၤစၢၤဆိၣ်ထွဲဒီးတၢ်ကူၣ်ဘၣ်ကူၣ်သ့ၣ်န့ၣ်ယၢ်လၢ ဖိသၣ်လၢ အအိၣ်ဖျဲၣ်ထီၣ် – န့ၣ်လီၤကတီၢ်ဆိၣ်က့ၢ်အဂီၢ်လီၤ.

Ku bilow qoyskaaga ambaqaad wanaagsan!

Waxaan bixinaa fursado taageero iyo waxbarasho loogu talagalay dhammaan carruurta laga bilaabo dhalashada – galitaanka dugsi xanaanada carruurta (kindergarten).

¡Dándole a su familia una gran ventaja!

Brindamos apoyo y oportunidades educativas a todos los niños de recién nacidos-ingreso al jardín de infantes.

You are your child's first and most important teacher. We want to support your family during these first years of your child's life! Our high-quality early childhood classes are for you and your young children — from birth to kindergarten age.

Choose the style of class that works best for you and your family!

Separating Classes

- Parents and children interact and explore activities together for part of the class. This provides an opportunity to spend uninterrupted time with your child exploring games, creative activities, books, science, dramatic play and more!
- Parents meet in a separate classroom for about 45 minutes with a licensed parent educator to share experiences and discuss topics related to child development and parenting techniques.
- While parents meet for parent discussion, children participate in age-appropriate activities with a licensed early childhood teacher. Children are provided experiences which encourage social, emotional, physical and cognitive development.

Gradual Separating Classes

- Child and caregiver spend time together and practice spending time apart in the same room or an adjoining room.
- A licensed early childhood educator and parent educator will support both of you as you learn to separate.

Non-Separating Classes

- Parents and children stay together in the classroom for the entire class.
- A licensed parent educator shares information and may lead a discussion on topics such as child growth and development, the transition to parenthood, how children learn and play, and peer interactions.
- Discussion, sharing, and support take place within sight and sound of playing children.

Parenting-Only Classes

- Parents will meet for a full hour discussing parenting topics.
- Children will experience educational activities in an early childhood environment during parent education time.

Drop In & Play Classes

- No fee or registration needed.
- Come when you can and join the fun!
- Parent and caregiver support for exploring the learning environments, peer interactions, and answering caregiver questions.



Our Promise

Fees for ECFE classes are on a sliding fee scale according to family income. No one will be turned away because of inability to pay for an ECFE class.

CLASS SCHEDULE

Morning ECFE Classes - Winter/Spring 2025

Monday	Tuesday	Wednesday	Thursday	Friday	Saturday
Toddlers #101 12-24 months 9:00-10:15am Jan 13 - May 12 12 Classes Gradual Separating Sibling Care: 101a Fee: B	Drop In & Play 0-5 years 8:45-10:00am Jan 14 - May 13 17 Classes Non-separating FREE	Drop In & Play 0-5 years 8:45-10:00am Jan 15 - May 14 17 Classes Non-separating FREE	Family Fun! #404 0-5 years 9:15-10:15am Jan 16 - May 15 17 Classes Non-separating Fee: B	Twos #202 24-36 months 9:00-10:30am Jan 17 - May 16 13 Classes Separating Fee: B	Drop In & Play 0-5 years 10:15-11:30am Jan 18 - Apr 12 10 Classes Non-separating FREE
Twos #201 24-36 months 10:30am-12:00pm Jan 13 - May 12 12 Classes Separating Sibling Care: 201a Fee: B	Grandparents #401 0-5 years 10:45am-12:15pm Jan 14 - May 13 17 Classes Separating Fee: A	Caregiver & Infant Yoga #004 0-8 months 10:45am-12:00pm Jan 15 - Mar 5 8 Classes Non-separating Fee: C	Toddlers and Twos #204 18-38 months 10:45am-12:15pm Jan 16 - May 15 17 Classes Gradual Separating Sibling Care: 204a Fee: A	Family Class #405 0-5 years 10:45am-12:15pm Jan 17 - May 16 13 Classes Separating Fee: B	

NO CLASS:

There is no class on these dates:

January 20
 January 31
 February 3
 February 17
 March 7 - 14
 March 31
 April 18
 April 21
 May 9



AGES:

Child must be the age listed by the first day of class.

Art Adventures #203
 18-48 months
 10:45am-12:00pm
Jan 15 - Feb 5
 4 Classes
 Non-separating
 Fee: D

Ooey Gooy #207
 2-5 year
 10:45am-12:00pm
Feb 12 - Mar 5
 4 Classes
 Non-separating
 Fee: D

Play & Learn! #103
 9-18 months
 10:45am-12:00pm
Mar 19 - Apr 16
 5 Classes
 Non-separating
 Fee: D

You & Me Baby #002
 0-8 months
 10:45am-12:00pm
Apr 23 - May 14
 4 Classes
 Non-separating
FREE

No Drama Discipline #205
 12 months - 8 years
 10:45am-12:00pm
Mar 19 - May 14
 9 Classes
 Separating
 Fee: C



LOCATION KEY:

- Early Childhood Center at Harambee**
 30 County Road B East, Maplewood, MN 55117
- Early Childhood Center at Anpétu Téča**
 1910 County Road B West, Roseville, MN 55113
- Early Childhood Center at Parkview**
 701 County Road B West, Roseville, MN 55113
- Prince of Peace Church**
 2561 Victoria St, Roseville, MN 55113

CLASS SCHEDULE

Afternoon & Evening ECFE Classes - Winter/Spring 2025

Monday	Tuesday	Wednesday	Thursday	Friday
Incredible Infants #003 3-11 months 5:00-6:15pm Jan 13 - Mar 17 6 Classes Non-separating FREE	Family Class #403 0-5 years 5:00-6:30pm Jan 14 - Mar 25 10 Classes Separating Fee: B	Toddlers #102 12-24 months 3:15-4:15pm Jan 15 - May 14 17 Classes Non-separating Fee: B	Family Class for English Language Learners #402 0-5 years 1:45-3:15pm Jan 16 - May 15 17 Classes Gradual Separating Fee: A	
You & Me Baby #001 0-8 months 5:00-6:15pm Mar 24 - May 12 6 Classes Non-separating FREE	Power of Play #406 0-5 years 5:00-6:30pm Apr 1 - May 13 7 Classes Separating Fee: C			No Class Dates: See page 6. Child must be the age listed by the first day of class.

CLASS DESCRIPTIONS

ECFE - Winter/Spring 2025

Power of Play (#406)

This class is focused on the power of play! It will include parent discussion on unstructured indoor and outdoor play, risky play, nature play, and how sensory play impacts regulation. You also get some creative play ideas as you join in play with your child during the first part of class. This is a separating class.

Art Adventures! (#203)

Each week, you and your child will experiment with a variety of art materials. Join us to create, play and have fun! This is a non-separating class.

More class descriptions on page 8!

No-Drama Discipline (#205)

This parenting class is based on the book, *No-Drama Discipline, The Whole-Brain Way to Calm the Chaos and Nurture Your Child's Developing Mind*, by Daniel J. Siegel and Tina Payne Bryson. You will learn about child brain development, ways to calmly connect with your child, setting clear and consistent limits, supports for handling tantrums, and how to stay focused on whole-brain parenting and discipline techniques. This is a parenting education only class. You'll settle your child in the classroom to explore and enjoy activities with the early childhood teachers, then have a full hour devoted to parenting education in a separate room.

Family Fun! (#404)

Bring your family for creative activities, time together, and fun! This is a non-separating class.

CLASS DESCRIPTIONS

ECFE - Winter/Spring 2025

You and Me Baby (#001)

For ages newborn - 8 months! Enjoy sensory activities, movement, and songs to support your child's brain development while also nurturing your parent-child relationship. Learn about parenting, child development, routines, and other topics of interest to the class participants. This is a non-separating class.

Incredible Infants (#002)

This class is especially for new babies (3 - 11 months) and parents. There will be songs, sensory, and physical development activities to do with your baby! You will also meet other parents with new infants and discuss topics of interest to the group. This is a non-separating class.

Caregiver and Infant Yoga (#004)

Join us in this non-separating yoga class, where you and your little one will have fun moving together, exploring sights, sounds, and movement. Crafted with postpartum-safe movements, it's just the right blend of relaxation and strength-building for your body. We will also discuss basics of infant growth and development, and help you connect with a supportive community of new parents. Parent Educator Jessica has years of experience working with postpartum parents and families, helping them reconnect with their bodies through yoga and mindfulness.

Toddlers (#101, #102)

Explore the classroom, sing songs, read books, enjoy creative and messy projects and more during this class just for toddlers and parents! Connect with other parents on topics such as language acquisition, routines, nutrition, the importance of play, supporting big emotions, and child development.

Play and Learn for Crawlers and Walkers (#103)

We'll explore all areas of development in this class, especially for children in their first year of life (and parents/caregivers). Each week, we will have activities to support a developmental area, such as physical, gross and fine motor, language, cognitive, social/emotional and more! We'll also explore how parents and caregivers can support learning at home. This is a non-separating class.

Twos (#201, #202)

You and your two-year-old will share time together enjoying painting, sensory activities, singing, playing with new toys and building creations! After circle time music and movement, the parent educator will lead discussions on topics such as sharing, independence, potty training, effective discipline techniques, social emotional development, and more! These are separating classes.

Toddlers and Twos (#204)

This class is for older toddlers and two year olds. Explore the classroom activities with your child and enjoy circle time with songs and books! Parents will meet for a discussion on a variety of topics relevant to this stage of growth and development. This is a gradual separating class.

Grandparents Class (#401)

Enjoy special time with your grandchild exploring the early childhood classroom activities, followed by a discussion on grandparenting in today's world. This is a separating class.

Ooey Goopy Sensory and Science Fun! (#207)

Enjoy spending time with your child and experience a variety of messy sensory activities and interesting science experiments. Learn about ways that sensory play and fun can help us reduce stress. Please dress for the mess. This is a non-separating class.

Family Class for English Language Learners (#402)

This class is especially for families learning English. We will enjoy time with our children playing, creating, singing, and learning. Parent discussion will support parenting and learning about child development, while being mindful that you are learning English. We will provide translation as much as possible. This is a separating class.

Family Class (#403, #405)

You'll have time to spend with your children engaging in activities in the early childhood classrooms, followed by a discussion in a separate room about common concerns, parenting ideas and strategies as we travel on this parenting adventure. This is a separating class.

REGISTRATION & FEES

ECFE - Winter/Spring 2025

General Registration Information

- Registration opens **December 10, 2024**, and continues until classes are full.
- Waitlists are created for full classes.
- Your child must be the age listed on the class chart by the first day of class.
- Families are limited to one 12-17 week class per child. There is no limit on special topics classes, special events, Family Drop In & Play, or classes that run less than 12 weeks.

Cancellations & Refunds

- No refunds are given for emergency or weather closings or for days missed due to illness or vacation. We will attempt to make up individual canceled classes if the schedule allows.
- We reserve the right to cancel a class due to low enrollment. If a class or event is canceled due to low enrollment, a full refund will be given.
- **For 12-17 Week Classes:** If you decide to cancel within 3 weeks of your start date, a pro-rated refund will be given, minus a \$10 cancellation fee. All registrations will be considered final after the third week of class, and no refunds will be given after that time.
- **For Classes Less Than 12 Weeks:** If you cancel within 2 weeks of your start date, a pro-rated refund will be given, minus a \$10 cancellation fee. All registrations will be considered final after the second week of class, and no refunds will be given after that time.
- **Weather Closing Information:** Hazardous weather conditions may at times prevent us from holding classes. When Roseville Schools are closed or delayed, ECFE classes may not meet. Listen to your local news station for school closings or call 651.487.4378.

Fees

ECFE classes operate on a sliding fee scale, so you pay what you can afford – no one is turned away for inability to pay. There is no better investment than your child! To determine what you would pay for a class, locate your gross yearly family income on the sliding fee scale below. The fee listed is your fee for the class. Please enter that fee on the registration form. Please call **651.487.4378** to request a fee waiver.

Sliding Fee Scale for Winter/Spring 2025

Gross Family Income	A	B	C	D
\$150-200,000	\$231	\$176	\$120	\$37
\$100-150,000	\$198	\$151	\$103	\$32
\$75-100,000	\$165	\$125	\$86	\$26
\$50-75,000	\$131	\$99	\$68	\$21
\$30-50,000	\$96	\$73	\$50	\$15
\$20-30,000	\$76	\$58	\$39	\$12
Below \$20,000	\$41	\$31	\$21	\$7

Sibling Care Sliding Fee Scale for Winter/Spring 2025

Gross Family Income	A	B
\$150-200,000	\$116	\$88
\$100-150,000	\$99	\$76
\$75-100,000	\$83	\$63
\$50-75,000	\$66	\$50
\$30-50,000	\$48	\$37
\$20-30,000	\$38	\$29
Below \$20,000	\$21	\$16

HOW TO REGISTER

ECFE - Winter/Spring 2025

Registration opens December 10, 2024! Classes begin the week of January 13, 2025

Register early on December 7, 2024 from 10:30 - 11:30am at the ECFE 50th Anniversary Celebration!

There are 3 different ways to register! Pick whichever way is easiest for your family:



1) ONLINE

- Go to the website www.isd623.org/ECFE or scan the QR code to the right.
- Find the button that says "CLICK HERE to register online for ECFE classes!"
- Click on the class that you are interested in.
- Click on the "Enroll Now" button.
- Sign in or create your account, and finish registering!



2) IN PERSON OR BY MAIL

You will find a paper registration form on page 11. You can also find a downloadable PDF registration form on our website. These paper forms can be mailed to us at either address below, or you can stop by in person and we can help you register!

Early Childhood Center at Parkview
701 County Road B West
Roseville, MN 55113

- OR -

Early Childhood Center at Anpétu Téča
1910 County Rd B West
Roseville, MN 55113



3) BY PHONE

Call our office at 651.487.4378 to register over the phone!

Questions? Don't hesitate to contact us at 651.487.4378. We're happy to help!

Payment can be made by cash, check, VISA, DISCOVER, MASTERCARD, or American Express at the time of registration. Please make checks payable to Roseville Area Schools.



REGISTRATION FORM

ECFE - Winter/Spring 2025

Child's Full Name (First, Middle, Last): _____
 Boy Girl Date of Birth: _____ Phone: _____
Street Address: _____ Apt #: _____ City: _____ Zip: _____
Special Health Concerns (accommodations, disability, allergy, dietary restrictions, or special needs we should be aware of): No Yes, explain:

Name of Parent(s) or Caregiver Attending Class: _____

Additional Child's Full Name (First, Middle, Last): _____
 Boy Girl Date of Birth: _____
Special Health Concerns (accommodations, disability, allergy, dietary restrictions, or special needs we should be aware of): No Yes, explain:

Parent(s)/Guardian(s) Name: _____
Number of family members in your home: _____ Primary language spoken at home: _____
Street Address: _____ Apt #: _____ City: _____ Zip: _____
Email Address(es): _____

Emergency Contact: _____ Relationship: _____ Phone: _____

Class Number	Class Fee
Choice 1:	\$
Choice 2:	\$
Choice 1:	\$
Choice 2:	\$
Total Fees =	\$

Full Payment by cash, check or credit/debit card
 Payment Plan (First payment with registration, second payment processed on October 15)
 Cash **Check** (Make Checks Payable to Roseville Area Schools) **Credit/Debit Card** (Please fill out info below)
Card Type (circle one): Mastercard Visa Discover American Express
Name on Card: _____
Credit Card Number: _____ Exp: _____ CVC: _____
Authorized Signature: _____ Date: _____

By registering your child for ECFE classes, you are acknowledging that photos of you and your child may be used for educational and publicity purposes for Roseville Area Schools or Roseville Community Education. To read the District's full policy on Directory Information, please contact ECFE at 651.487.4378.

Immunization record or a notarized conscientious objector letter is required in order to participate in ECFE and Pre-K classes. Please submit to your parent educator, teacher, or the office.

HELPFUL RESOURCES

For You and Your Family!

Individual Parent Education

One-to-One Visits provide education and support to parents with children from birth to age 5. A licensed parent educator can work with you by phone, e-mail, a home visit, Zoom, or by appointment. Visits can include:

- Current information on parenting and child development issues
- Activities for young children
- Information about resources through the district and in the community
- A New Baby packet and much more!

This helpful service is FREE to parents with infants, toddlers and preschoolers living in the Roseville School District. For more information or to arrange a visit, please call the ECFE office at **651.487.4378**.

Refer a Child to Help Me Grow

If you have concerns about your child's development, talk to your health care provider, or call **Help Me Grow** at **651.604.3700**. Someone will assist you to arrange for a free screening or evaluation to determine if your child is eligible for **Help Me Grow: Early Intervention Service**. Early childhood specialists will work with eligible children and families to plan the services and support they need!

Are You on the Roseville Area Schools' District Database?

Do you have a new baby? If so, your child's name may not yet be in the Roseville Area Schools' database.

By registering your child's name now, you will be notified of early childhood screening, when to register your child for kindergarten, and receive important district publications including this brochure! Call now to get added: **651.604.3578**.



SCREENING

Has Your Child Been Screened? Call Today!

Early Childhood Screening

Roseville Area Schools Early Childhood Program recommends that children be screened at age 3. Screening is free and helps you:

- Find out how your child is growing and developing
- Connect with early learning programs and services
- Find resources for your parenting questions

Call to make an appointment. 651.487.4378, ext. 2

प्रारम्भिक बाल मूल्यांकन

रोजभिल एरिया स्कूल्स अर्ली चाइल्डहुड प्रोग्रामले बालबालिकाहरूलाई 3 वर्षको उमेरमा मूल्याङ्कन गरिनुपर्छ भन्ने सिफारिस गर्छ। मूल्याङ्कन निःशुल्क छ र यसले तपाईंलाई निम्न कुराहरूमा सहायता गर्छ:

- तपाईंको बच्चा कसरी वृद्धि र विकास भइरहेको छ पत्ता लगाउन
- प्रारम्भिक सिकाई कार्यक्रमहरू र सेवाहरूमा संलग्न हुन
- अभिभावकत्व सम्बन्धी प्रश्नहरूको बारेमा स्रोत-साधन पत्ता लगाउन

भेटघाटको लागि समय मिलाउन कल गर्नुहोस्। 651.487.4378, एक्स्टेन्सन 2

တၢ်သံသမိးကွၢ်ဖိသၢ်ဆံးအကတီၢ်

Roseville ဟီၣ်ကဝီၤကွၢ် ဖိသၢ်ဆံးကတီၢ်တၢ်တီၢ်ကျၢ (Roseville Area Schools Early Childhood Program)

ဟ့ၣ်ကူၣ်ဟ့ၣ်ဖးလၢ တၢ်သံသမိးကွၢ် ဖိသၢ် ဖဲအသးအိၣ် ၃ နံၣ်လီၤ.

တၢ်သံသမိးအံၤ တလၢၣ်ဘူၣ်လၢၣ်စ့ၤဘၣ်ဒီးမၤစၢၤန့ၤလၢ-

- ယုထံၣ်ခၢ မ့ၢ်နဖိဒိၣ်ထီၣ်ဒီးဂ့ၤထီၣ်ပသီထီၣ်ဒ်လဲၣ်
- ဘျးစဲဒီးတၢ်မၤလိဆိတၢ်တီၢ်ကျၢတဖၣ်ဒီးတၢ်မၤစၢၤတဖၣ်
- ယုထံၣ်န့ၢ်တၢ်အိၣ်ယၢၤတဖၣ်လၢနဖိမိၢ်ပၢအတၢ်သံကွၢ်တဖၣ်အဂီၢ်

ကိးလၢကမၤတၢ်သ့ၣ်ဆၢဖးကတီၢ်လၢကထံၣ်လိာ်သးအဂီၢ် 651.487.4378, ext. 2

Baarintaanka Hore ee Carruurnimada

Barnaamijka Hore Carruurnimada ee Degaanka Roseville ayaa ku talinaya in carruurta lagu baaro da'da 3 jirka. Baaritaanku waa lacag la'aan oo wuxuu kaa caawinayaa:

- Inaad ogaato siduu ilmahaagu u korayo oo u kobcayo.
- Inaad ku xiranto barnaamijyada iyo adeegyada waxbarashada hore.
- Inaad hesho ilo loogu talagalay su'aalaha waalidnimadaada

Wac si aad ballan uga qabsato 651.487.4378, ext. 2

Evaluación de Niñez Temprana

El Programa de Niñez Temprana de las Escuelas del Area de Roseville recomienda que se evalúe a los niños a los 3 años. La Evaluación es gratis y lo ayuda a:

- Averiguar cómo está creciendo y desarrollándose su hijo
- Conectarse con programas y servicios de aprendizaje temprano
- Hallar recursos para sus preguntas de crianza de niños

Llame para sacar una cita 651.487.4378, ext. 2

TOY LENDING LIBRARY

Toy Lending Library

It's like having new toys every week! Open September-May to all individuals, families and child care providers. Membership is free. You can check out slides, toys, puzzles, games, children's books, and parenting magazines/books. Call 651.487.4378 to register or visit the Library at Parkview Early Childhood Center.

Biblioteca de Juguetes

¡Es como tener juguetes nuevos todas las semanas! Abierta de Septiembre a Mayo para todas las personas, familias y proveedores de cuidado infantil. La membresía es gratuita. Puede pedir prestado toboganes y juguetes para bebés, rompecabezas, juguetes y juegos, libros para niños y revistas/libros de crianza. Llame al 651-487-4378 para inscribirse o visite las bibliotecas ubicadas en Parkview Early Childhood Center.

Maktabadda ama Laybareeriga Boombalayaasha Carruurta

Waa sidii adigoo boombale cusub helay todobaad walba! Waa maktabaddaas shakhsiyaadka, qoysaska iyo dadka carruurta xanaaneeyaba oo dhan u furan tahay inta u dhexaysa bilaha September iyo May. Waxaad ka amaahan kartaa:

- Qalabka carruurta ku sibiibaxato "slides" iyo kuwa giraangiraha ah "ring toys"
- Hal-xiraayelaal "puzzles," boombaleyaaliyo ciyaaraha lagu madaadaasho "games"
- Buugaagta carruurta iyo joornaalada iyo buugaagta laga barto waalidnimada

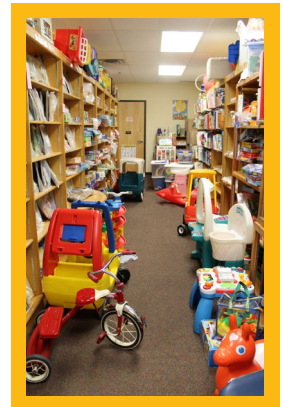
Wac 651.487.4378 si aad isaga diiwaan geliso ama booqo maktabadda ama laybareeriga ku yaal Parkview Early Childhood Center.

टोइ लेन्डिङ लाइब्रेरी

हरेक हमा नयाँ खेलौना प्राप्त गरेजस्तै हुन्छ। व्यक्तिहरू, परिवारहरू, र बाल हेरचाह प्रदायकहरूका लागि सेप्टेम्बर-मेइसम्म खुला रहन्छ। सदस्यता नि:शुल्क छ। तपाईंले निम्न कुराहरू जाँचन सक्नुहुन्छ:

- स्लाइडहरू र रिङ खेलौनाहरू
- पजल, खेलौना र खेलहरू
- बाल पुस्तकहरू र अभिभावकत्व सम्बन्धी अखबार/पुस्तक-पुस्तिकाहरू

दर्ता गर्नको लागि 651.487.4378 मा कल गर्नुहोस् वा पार्कभिव अर्ली चाइल्डहुड सेन्टर र फेयरभिव कम्युनिटि सेन्टरमा जानुहोस्।

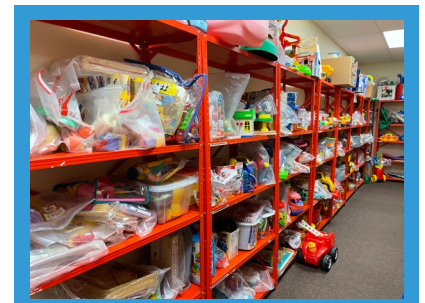


လံာ်ရီဒါးလာ ဟ့ာ်လံာ်တံာ်ဂဲလံာ်ကွဲ

လံာ်ကံးမးလံာ်ဒီးနံာ်ဘာ်တံာ်ဂဲလံာ်ကွဲအသီကံးနံာ်ဒီးလံာ်.တံာ်အိးထီာ်အီၤ(လံာ်စးတုာ်ဘာ်တုာ်လံာ်မ့ၤ) လံာ်ပုၤနီၤတဂၤ,န့ာ်ဖိထံာ်ဖိတဖာ်ဒီးပုၤလံာ်အကွဲထွဲမၤစၢၤဖိသံာ်တဖာ်အဂီၢ်န့ာ်လံာ်.တလံာ်ဟ့ာ်က ရၢဖိအဘူးအလဲဘာ်.နလဲၤသမံသမိးကွဲာ်သုဝဲလံာ်-

- လဲၤဂဲလံာ်ကွဲစၢၤနဖိလံာ်ဖိသံာ်တံာ်ဂဲလံာ်ကွဲအလံာ်.
- တံာ်ပုၤနီၤ(puzzles)ဒီးတံာ်ဂဲလံာ်ကွဲ(games)တဖာ်.
- ဖိသံာ်အလံာ်တဖာ်,တံာ်သုဒုးဒိာ်ထီာ်ဖိသံာ်မဲးကစု(magazines) ဒီးမိာ်ပာ်အဂီၢ်လံာ်တဖာ်.

ကိး(၆၅၁.၄၈၇.၄၃၇၈)လံာ်ကဆဲးလံာ်မံၤ(မ့တမ့ၢ်)လဲၤကွဲာ်လံာ်ရီဒါးဖဲ Parkview Early Childhood Center အဂီၢ်န့ာ်တကွဲာ်.



Hours and more information can be found at www.isd623.org/ECFE. For questions, contact us at 651.487.4378

JOIN THE ROSEVILLE PRE-K & ECFE ADVISORY COUNCIL

MISSION:

The Pre-K & ECFE Advisory Council supports and increases awareness of the early childhood programs (ECFE, Pre-K and Early Childhood Screening).

Join us to:

- Share ideas and feedback for classes and family events.
- Plan and volunteer at events.
- Be an advocate for early childhood in the community and legislature.

UPCOMING MEETINGS:

More details and upcoming meetings will be posted on our website at <https://communityed.isd623.org/early-childhood/advisory>.



STAY UPDATED:

For future updates, meeting information, and event details, follow the Roseville Early Childhood Program on Facebook! Find our page at facebook.com/RosevilleECFE/.



YOU'RE INVITED!



Roseville Area Schools invites families with new infants (ages birth to 9 months) to:

A BABY SHOWER TO CELEBRATE YOU AND YOUR BABY!



Free Event!

- ★ Free gifts and refreshments!
- ★ Meet other parents and our ECFE teachers
- ★ Learn about stages of infant development
- ★ Enjoy activities with your baby: music, sensory, books & more!

Wednesday, March 19
5:00 - 6:00 p.m.

Parkview Center School
Door 19, Lower Level
701 County Road B W
Roseville, MN 55113

OR

Saturday, March 22
10:30 - 11:30 a.m.

Parkview Center School
Door 19, Lower Level
701 County Road B W
Roseville, MN 55113



Questions? Contact Early Childhood Outreach Manager
Melissa Brady at 651.604.3578 or melissa.brady@isd623.org



EARLY CHILDHOOD

ECFE - Winter/Spring 2025

We provide support and educational opportunities for all children from birth to kindergarten entry!

Pre-K 2025-2026

We offer a variety of Pre-K classes for children ages 3 and 4 by September 1. Half-day, all-day, and bilingual classes are available to provide your child with the building blocks for school success! Financial assistance and scholarships may be available to qualifying families. If you are interested in registering for Pre-K, visit isd623.org/PreK. Watch for Pre-K 2025-2026 registration information in January 2025.

Toy Lending Library

It's like having new toys every week! Open to all individuals, families, and childcare providers. Free membership! Slides, riding toys, infant, toddler and preschool toys, puzzles, games, children's books and parenting resources.

See page 14 for more details!

Family Drop In & Play

Each week will be filled with many creative and engaging learning activities for the whole family. No fee or registration necessary.

See page 2 for more details!

Advisory Council

Join the Pre-K & ECFE Advisory Council to support our program and share your ideas, insight, and feedback!

See page 15 for more details!

Classes and activities for your young family!



Registration begins December 10, 2024!

To register or learn more, call 651-487-4378, visit www.isd623.org/ECFE or scan this QR code!