

Winter 2025

SoWashCo

COMMUNITY EDUCATION

AFTON | DENMARK | COTTAGE GROVE | GREY CLOUD ISLAND | NEWPORT | ST. PAUL PARK | WOODBURY



REGISTER ONLINE
FOR ADULT & YOUTH CLASSES
SOWASHCO.CE.ELEYO.COM

Visit commed.sowashco.org

TABLE OF CONTENTS

Adults 50+ Activities.....3

Adult Enrichment

Cook4
 Create4
 Feel Great5
 Fitness6
 Gain Skills.....8
 Manage Money.....11
 Ed2Go Online Career Training.....12

Adults with Developmental Disabilities.....12

Great Rivers Adult Education.....14

Facility Rental.....14

Aquatics.....16

Youth Athletics and Recreation

Middle School Athletics.....16
 Camps and Clinics16
 Recreation.....19
 Gymnastics20

Youth Classes and Activities

Create21
 Performing Arts.....22
 Skills and Development.....23
 Music.....24
 STEM.....24

Kids Club (School-Age Child Care).....28

Early Learning.....30

Directory and Map.....32

Registration Information.....33

Financial Assistance.....34

Educational Benefits.....35

Community Education Main Office

District Program Center
 8400 E. Point Douglas Rd. S, Cottage Grove, MN 55016

Phone: 651-425-6600 | **Fax:** 651-425-6620

communityeducation@sowashco.org | commed.sowashco.org

Media Consent: Media taken within SoWashCo Community Education classes, programs, events and activities, including activities sponsored or in partnership with SoWashCo Community Education, may be included in district publications. Media includes, but is not limited to interviews, photos and videos. Please notify our office at 651-425-6600 if you wish to opt-out.

COFFEE IS ALWAYS A GOOD IDEA.

so wash co
COMMUNITY EDUCATION



District Program Center

8400 E. Point Douglas Rd. S in Cottage Grove
 651-425-6650

Located to the right of the welcome desk.

Scan to view the menu or visit

commed.sowashco.org/gencafe

Monday-Friday | 8 a.m.-1:30 p.m.
 Friday hours may vary.

Coffee | Tea | Espresso | Homemade Baked Goods | Weekly Lunch Special

Paid Advertisement

Now hiring!
 substitute teachers
 and paraeducators.

teachers ON CALL

A Kelly® Education Company

- Make a difference in the community
- Flexible schedule
- Great pay and bonus opportunities
- Prior teaching experience not required

Call or visit us online to learn more.

800.713.4439 | teachersoncall.com



SoWashCo SCHOOLS



Teachers On Call is a Kelly® Education company. An Equal Opportunity Employer © 2023 Kelly Services, Inc. All rights reserved. MT13996





Member Benefits



Daily activities and games



Weekly fitness programs



Monthly support groups



Monthly social gatherings



Technology help and resources



Special events and workshops



Volunteer opportunities



Discounts
Including free daily coffee or 25¢ off specialty drinks at Generations Cafe



Invite a friend to join you.
If they become a member, you'll both be entered into a drawing to **win a \$20 gift card!**

**Guest must be a first-time member.*

Monthly Social Activities

Meet new people or bring along a friend to our monthly social gatherings.

Community Potluck

Bring a dish to share!

12-1 p.m., 1st Wednesday

Lunch Bunch

Join us at a local restaurant.

12-1 p.m., 2nd Wednesday

Lunch will be at your own expense.

Landmark Tours Travel Show

Are you dreaming of adventure?! Find exciting overseas and U.S. travel opportunities from Landmark Tours.

SA30821

11 a.m.-12 p.m. Thu Jan. 23
District Program Center

55+ Driver Discount

4 Hour Class | \$24

In partnership with the Minnesota Highway and Safety Research Center at St. Cloud State University we offer 55+ Driver Discount classes for new or returning attendees at the District Program Center in Cottage Grove. For class dates and to register, call St. Cloud State at 1-888-234-1294.

Save 10%
on car insurance

Weekly Games

Join in on the fun and camaraderie during our weekly game play.

Located at the District Program Center.

500 Card Game

1-3 p.m. Thu/Fri

Bingo

1-3 p.m. Mon

Bunco

10 a.m.-12 p.m. Fri

Chess

1-2 p.m. Tue

Cribbage

1-3 p.m. Wed

Farkle

10-11:30 a.m. Mon

Hand and Foot

12:30-4 p.m. Thu

Mah Jongg

9 a.m.-12 p.m. Tue

Mexican Train Dominoes

9:45-11:45 a.m. Wed

Women's Bridge

1-4 p.m. Tue

Arthritis Foundation Exercise Program (AFEP)

The program features range-of-motion and endurance-building activities and relaxation techniques.

SA10221

2:30-3:15 p.m. Tue/Thu
The Grove Church, Cottage Grove

SAIL Fitness - Stay Active and Independent for Life

Maintain your independence and reduce the risk of falling with exercises to improve your strength, balance and fitness.

SA10261

3:15-4 p.m. Mon/Wed
All Saints Lutheran Church

Foot Care

Call 651-425-6650 to schedule a 40-minute appointment.

Members\$29
Non-members...\$39

Social Clubs and Support Groups

Located at the District Program Center unless otherwise noted.

Monday Morning Coffee and Cards

8:15-11:15 a.m. Mon

Open Craft Time

9:30-11:45 a.m. Tue

Open Crochet and Knitting

9-11 a.m. Thu

Lighten Up (Weight Loss) Group

8:30-9:30 a.m. Tue

Book Club Discussion

1:30-3 p.m. 2nd Tue

Caregiver Support Group

1:30-2:30 p.m. 2nd Thu

Grief Support Group

6:30-8 p.m. 3rd Mon
KOK Funeral Home

Diabetes Support Group

6:30-8 p.m. 3rd Tue

“This place saved my life!”
-Suzette A.



adults Trips & Tours

View the list of upcoming **trips and tours** on our website at commmed.sowashco.org/adults50

Pickleball lessons and drop in and play on page 8.



COOK



Pad Thai

Instructor: Mimi Selam Asfaha

Learn to make this classic dish, known for its diverse flavor profile of sweet, salty, sour and spicy. Perfect for entertaining, wow your friends and family!

AD28901 1 session \$65
6:30-8:30 p.m. Thu Jan. 16
East Ridge High School

Easy Ethiopian/Eritrean Cooking

Instructor: Mimi Selam Asfaha

Ethiopian/Eritrean food is light, healthy and flavorful, ranging from very spicy to very mild. Exotic spices are paired with vegetables, beans and lentils or meat.

AD28881 1 session \$65
6:30-8:30 p.m. Mon Feb. 24
District Program Center

Chicken Egg Rolls NEW

Instructor: Sanida Xiong

Create crispy egg rolls filled with savory chicken, vermicelli noodles and fresh vegetables that will impress your friends and family.

AD28911 1 session \$49
6-9 p.m. Thu Feb. 13
East Ridge High School



Vietnamese Pho NEW

Instructor: Sanida Xiong

Discover how to prepare this iconic Vietnamese dish from scratch and the secrets behind this beloved comfort food.

AD28891 1 session \$49
6-9 p.m. Thu Mar. 20
East Ridge High School

Deep-Flavored, Hearty Soups NEW

Instructor: Jan Zita Grover

Learn the soup-by-layers technique to create a deeply-flavored, hearty soup. Make one of three recipes: Sausage-White Bean-Vegetable, Curried Squash or Cream of Chicken-Wild Rice.

AD28621 1 session \$55
6-9 p.m. Mon Mar. 24
District Program Center

Beginning Cake Decorating

Instructor: Diana Hirte

Learn to create shell borders, writing, stars and rosettes while decorating an 8" cake to take home.

AD18611 1 session \$49
6:30-8:30 p.m. Mon Mar. 31
District Program Center

Take-home starter kits will be available for an additional \$12



CREATE

Pottery Workshop - Adult and Child Age 8+

Instructor: Craig J Seath

Use a slab roller, extruder, electric pottery wheel and glaze to make a variety of projects.

\$25 supply fee required the day of class.

AD25051 1 session \$55/person
3-5:30 p.m. Sat Feb. 1
Craig Seath's Pottery Studio

AD25052 1 session \$55/person
3-5:30 p.m. Sat Mar. 1
Craig Seath's Pottery Studio



Adult Pottery-Hand Building & Wheel Instruction with Stoneware Clay NEW

Instructor: Craig J Seath

Gain an introduction to the basic techniques of hand building, throwing on a potter's wheel, and glazing. New and returning students are welcome.

\$35 supply fee required the day of class.

AD25041 3 sessions \$110
6:30-8:30 p.m. Thu Feb. 20-Mar. 6
Craig Seath's Pottery Studio

AD25042 3 sessions \$110
6:30-8:30 p.m. Thu Mar. 27-Apr. 10
Craig Seath's Pottery Studio



Potter's Wheel-Open Studio for All Levels

Instructor: Crysta Bedard

New and past students are welcome! Throwing demos, instructor assistance, tools, clay and glazes are included.

AD23321 6 sessions \$175
6-8:30 p.m. Mon Jan. 27-Mar. 3
Woodbury High School

AD23322 6 sessions \$175
6-8:30 p.m. Mon Mar. 17-Apr. 21
Woodbury High School

Acrylic Pouring: "Up North"

Instructor: Lisa Van Wyk

Discover the world of acrylic pouring! Create beautiful abstract artwork using fluid acrylics and pouring medium.

Choose a 12" cut-out of Minnesota, a bear or a fish.

AD23552 1 session \$49
6-8:30 p.m. Thu Jan. 23
East Ridge High School



Fabric Welcome Wreath

NEW **Instructor: Robyn Renfroe**

Learn to create festive wreaths using patterned fabric and wire mesh. No experience needed—build new skills and make friends while crafting together!

AD23541 1 session \$65
6:30-8:30 p.m. Mon Jan. 27
District Program Center



Photo Organization-Print and Digital

Instructor: Kathy Povolny

Get all your photos organized with systems for quick access. Learn about AI, digitizing, cloud storage, and restoring photos for all generations.

AD26401 1 session \$19
6:30-8:30 p.m. Wed Feb. 5
Lake Middle School

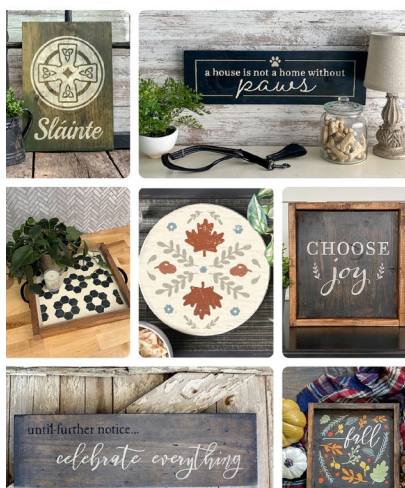
Paint Date Night: Sunset Heart NEW

Instructor: Swetha Avula

Explore your creative side together. Get step-by-step guidance on painting techniques to create a cohesive and beautiful painting on two 12" x 16" canvases.

AD15241 1 session \$69
5:30-7:30 p.m. Mon Feb. 10
District Program Center





Board & Brush Community Ed Nights!

Select a project from the gallery. B&B will provide all the materials and instruct you step-by-step to create a beautiful piece of decor.

Scan the QR code or visit bit.ly/SWCbb

for instructions on how to register.



Pick Your Project

Select a seasonal or home décor project from the gallery.

6-9 p.m. Thu Jan. 9
Woodbury Board & Brush Studio

Per person.....\$78

Adult/Child Night

Spend time together as you each make a wood project. Adults can attend solo too!

10 a.m.-1 p.m. Sat Feb. 8
Woodbury Board & Brush Studio

Per person.....\$73

Child 6+\$25

Children must be accompanied by a registered adult. Select one adult project and one child project.

Mini Sign Project

Make a small wooden, framed sign for your home or as a gift.

2-5 p.m. Sun Mar. 9
Woodbury Board & Brush Studio

Per person.....\$38

Home Landscape Design

led by Washington County Master Gardeners

Learn design principles, overcome challenges, and create a custom landscape plan with hands-on assistance from Master Gardeners.

AD27281 2 sessions
6:30-9 p.m. Thu Mar. 20-27
East Ridge High School

Per person.....\$35

Per couple.....\$55



Fused Glass NEW

Instructor: Theresa Charpentier

Learn to make your own fused glass works of art. Select and hand cut special glass, then get designing.

Projects will be fused in a high-temperature kiln at the artist's studio and will be available for pick up at a later date.

Tall Metal Fused Glass Garden Stake

Make one 3" x 44" garden stake.

AD25121 1 session \$140
5:30-7:30 p.m. Wed Feb. 5
Lake Middle School

Point Down Metal Fused Glass Garden Stake

Make one 3" x 44" garden stake.

AD25141 1 session \$140
5:30-7:30 p.m. Thu Feb. 20
East Ridge High School

Fused Glass Charcuterie/Serving Platter and Condiment Dishes

Make food-safe, charcuterie/serving platter and condiment dishes.

AD25151 1 session
5:30-8 p.m. Wed Mar. 5
Lake Middle School
Large\$95
Xlarge.....\$199

Paper Quilling Monogram

Instructor: Swetha Avula

Discover the intricate art of paper quilling. Create a stunning, personalized monogram design on an 8" x 10" canvas.

AD15221 1 session \$49
5:30-7:30 p.m. Wed Mar. 5
District Program Center

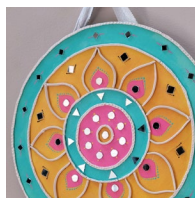


Lippan Art NEW

Instructor: Swetha Avula

Create intricate designs on a 12" wooden board using clay, paint, and mirrors. Learn traditional Indian mural craft. All materials provided.

AD25211 1 session \$49
5:30-7:30 p.m. Mon Mar. 17
District Program Center



FEEL GREAT



Travel Planning ONLINE

Instructor: Rebecca Ruprecht-Barrett

Plan the perfect vacation. Learn insider advice, essential planning steps, and time-saving tricks.

What to know when Planning a Cruise

Learn about cruise options, onboard amenities, and stateroom choices to help you plan the perfect cruise for your needs.

OL29201 1 session \$15
6:30-8 p.m. Thu Jan. 23

What to know when Planning a Disney Vacation

Discover tips and insider knowledge on Walt Disney World, including resorts, attractions, dining, and how to maximize your time.

OL29191 1 session \$15
6:30-8 p.m. Wed Feb. 5

Tips and Tricks for Traveling with Kids

Get practical advice from experienced parents on how to make traveling with kids easier, from road trips to flights and theme park visits.

OL29211 1 session \$15
6:30-8 p.m. Mon Mar. 31

Navigating the Menopause Transition

Kristy Muehlbauer ONLINE

Learn about the stages of menopause, common symptoms, triggers, and explore various management options, including lifestyle changes and hormone therapy.

OL29651 3 sessions \$39
6-7 p.m. Tue Jan. 21-Feb. 4

The Perfect Storm-Getting to the Root Cause When a Child is Struggling

Instructor: Mindset Chiropractic

Learn how to better understand what our children are experiencing and why and how natural, drug-free, neurologically-based care can help.

AD27911 1 session Free
7- 8:30 p.m. Thu Jan. 23
East Ridge High School



FEEL GREAT



Group Hypnosis

Instructor: Mary Fischer

Stop cravings, overeating and snacking with hypnosis.

Includes a reinforcement CD and a lifetime guarantee for free future seminars.

Weight Loss/Weight Control

AD24541 1 session \$59
5:45-8:45 p.m. Wed Feb. 5
Lake Middle School

Stop Smoking/Stop Chewing

AD24531 1 session \$59
5:45-8:45 p.m. Wed Feb. 5
Lake Middle School

Pain & Pounds: Winning the Battle on Both Fronts **NEW**

Instructor: Christie Amundson

Discover why "eat less, exercise more" may not work for you and learn pain-friendly strategies to burn fat and improve health.

AD29691 1 session \$20
6-7:30 p.m. Wed Feb. 5
Lake Middle School

Wellness Book Club

Instructor: Amy Dovenmuehle

Each month, we'll explore a different wellness topic through a thought-provoking book, diving deep into the core messages and practical advice.

Books not included.

AD27891 4 sessions Free
6:30-7:30 p.m. Wed Feb. 5-May. 7
Lake Middle School

CPR/AED and First Aid Training

Instructor: HeartCert CPR

Receive the training necessary to provide basic care until advanced medical personnel arrive.

For non-healthcare providers. Includes American Heart Association certification.

Adult & Pediatric CPR/AED

AD24141 1 session \$85
6-8:30 p.m. Mon Feb. 17
District Program Center

First Aid Training

AD24901 1 session \$85
6-9 p.m. Mon Feb. 24
District Program Center



Plant-Powered Lifestyle and Tasting **NEW**

Explore how a plant-based diet improves health, supports the environment, and protects animals. Includes food tasting and discussions on sustainability and animal welfare.

AD29641 1 session \$15
6-7:30 p.m. Mon Feb. 24
District Program Center

Becoming EcoWell: Crafting Your Blueprint for Healthy and Harmonious Living **NEW**

Instructor: Michelle Porter

Discover fun, simple ways to improve your health while helping the planet. Learn sustainable strategies that benefit both you and the environment.

AD26121 1 session \$15
6:30-8 p.m. Mon Mar. 3
District Program Center

Will I Have Chronic Pain Forever? **NEW**

Instructor: Christie Amundson

Discover non-invasive strategies to manage chronic pain and fibromyalgia when traditional treatments fail, empowering you with actionable steps to reclaim your life.

AD29701 1 session \$20
6-7:30 p.m. Wed Mar. 5
Lake Middle School



Sound Bath and Healing Frequencies

Instructor: Theresa Charpentier

Experience relaxation and healing through soothing sounds from crystal bowls and instruments, promoting emotional and spiritual well-being while reducing stress and tension.

AD27881 1 session \$29
6-8 p.m. Thu Mar. 20
East Ridge High School

FITNESS

Nutrition & Exercise Challenge

Uplift Guided Fitness for Women

Join this 3-week challenge to improve your health, body and mind. Get a specific plan for exercise and healthy eating, three 1-on-1 personal sessions and a 3-week gym membership.

After registering, please call 651-209-6778 to schedule your first two training sessions before March 31, 2025.

AD21791 \$75



Come Run and/or Walk with Us

Instructor: Carol DeBlieck & Angel Glass

Join us for indoor running, walking and speed work and strength suggestions. Open to people of all running levels.

Children ages 12-14 may register with an adult (aged 15 and older).

AD29343 6 sessions
6:30-7:30 p.m. Tue Jan. 7-Feb. 11
Park High School

Adult.....\$18
Adult & Child.....\$30

AD29342 5 sessions
6:30-7:30 p.m. Thu Jan. 9-Feb. 13
Park High School

Adult.....\$15
Adult & Child.....\$25

POUND-Rockout. Workout.

Instructor: Sara Monson

Unleash your inner rock star with this high-energy workout using drumsticks! Sweat, tone, and rock out to upbeat music!

Children ages 10-14 must be accompanied by a registered adult (aged 15 or older).

AD21883 6 sessions \$54
6-7 p.m. Wed Jan. 8-Feb. 19
Woodbury Middle School

AD21882 6 sessions \$54
6-7 p.m. Wed Mar. 5-Apr. 16
Woodbury Middle School



Tabata-Interval Training **ONLINE**

Instructor: T Salmonson

Start your day with a fast, effective workout with intense 20-second exercises and 10-second rests that will burn calories for quick results.

OL21521 9 sessions \$75
6-6:30 a.m. Thu Jan. 2-Feb. 27

OL21522 8 sessions \$67
6-6:30 a.m. Thu Mar. 6-Apr. 24

Move Better and Feel Better Using The Feldenkrais Method ONLINE

Instructor: Maggie Vogel-Martin

The Feldenkrais Method® uses slow, mindful movements to create new, more efficient brain patterns, reducing pain and improving flexibility, balance, and focus.



OL21471	6 sessions	\$59
6-7 p.m.	Wed Jan. 8-Feb. 12	
OL21472	6 sessions	\$59
6-7 p.m.	Wed Feb. 19-Mar. 26	

Therapeutic Yoga for Releasing Stress!

Instructor: Dr. Tamara Kraft

Therapeutic Yoga classes use breathwork, mindful movement, and relaxation techniques to reduce stress, strengthen the body, and balance the nervous system.

Level 1 Foundations

An introduction to yoga, focusing on breath and movement to relieve stress, build strength, and promote deep relaxation.



AD27771	8 sessions	\$85
7:30-8:45 p.m.	Thu Jan. 9-Feb. 27	
Bailey Elementary		
AD27772	8 sessions	\$85
7:30-8:45 p.m.	T/Th Mar. 20-May 8	
Bailey Elementary		

Level 2 Build and Challenge

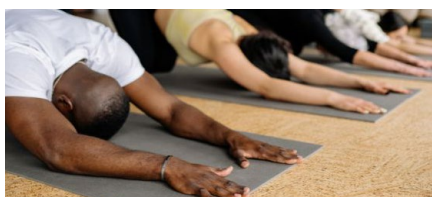
Offers more physical challenge, helping you further build strength and flexibility while enhancing nervous system balance and relaxation techniques.

AD17751	8 sessions	\$95
7-8:30 p.m.	Wed Sept. 4-Oct. 23	
Bailey Elementary		
AD17752	8 sessions	\$95
7-8:30 p.m.	Wed Oct. 30-Dec. 18	
Bailey Elementary		

Gentle Therapeutic Yoga

Perfect for those new to yoga or preferring a slower, gentler practice. Focuses on breath, slow movements, and deep relaxation.

AD12771	8 sessions	\$85
6:15-7:30 p.m.	Thu Jan. 9-Feb. 27	
Bailey Elementary		
AD12772	8 sessions	\$85
6:15-7:30 p.m.	T/Th Mar. 20-May 8	
Bailey Elementary		



Yoga -Level 1

Instructor: Sandy K LeMay

This flow-style yoga class strengthens your muscles and enhances flexibility with basic poses. Modifications are offered for personalized practice.

AD21981	6 sessions	\$54
5:15-6:15 p.m.	Tue Jan. 7-Feb. 18	
District Program Center		
AD21982	6 sessions	\$54
5:15-6:15 p.m.	Tue Feb. 25-Apr. 8	
District Program Center		

Yoga -Level 1 ONLINE ON-DEMAND

Instructor: Jill Hawthorne

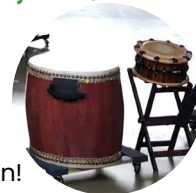
Similar to the in-person class, but pre-recorded for you to practice at your convenience.

OL21981	6 sessions	\$54
4:15-5:15 p.m.	Tue Jan. 14-Feb. 18	
OL21982	5 sessions	\$45
4:15-5:15 p.m.	Tue Feb. 25-Mar. 25	

Come Hit Big Drums (Play Taiko!)

Instructor: Wendy Jo Gertjeanssen

Join this beginner class to explore rhythms and learn a song while having fun!



AD29861	6 sessions	\$149
6:30-7:30 p.m.	Tue Jan. 28-Mar. 18	
Bailey Elementary		

Zumba

Instructor: Megan Knowles

Get your heart pumping with this fun, dance-based, calorie-burning workout to Latin, Hip-hop, and Pop.

AD27803	6 sessions	\$59
6:30-7:30 p.m.	Mon Feb. 3-Mar. 17	
Lake Middle School		

AD27801	6 sessions	\$59
6:30-7:30 p.m.	Mon Mar. 24-Apr. 28	
Lake Middle School		

30/30 Zumba (Includes Zumba Toning)

Instructor: Megan Knowles

Elevate your heart rate and tone your muscles with 30 min. of Zumba Fitness followed by 30 min. of Zumba Toning!

AD27903	6 sessions	\$59
6:30-7:30 p.m.	Wed Feb. 5-Mar. 19	
Lake Middle School		

Paid Advertisement

INSPIRE
VERB
fill (someone) with courage or ability to do or feel something, especially to do something

EMPOWER
VERB
(someone) stronger and confident, especially in controlling their life and claiming their rights.

SCAN THE QR CODE FOR A FREE TRIAL

CHANGE STARTS WITH THE FIRST STEP
JOIN US NOW!

burn boot camp®

LOCATIONS IN BOTH WOODBURY AND COTTAGE GROVE

FITNESS



Line Dancing with Deena **NEW**

Instructor: Deena Broaddus

Join us for six weeks of fun! A quick mini lesson will introduce each dance pattern. Feel confident and get a great workout!

AD20851 6 sessions \$49
6:15-7 p.m. Tue Jan. 14-Feb. 25
Grey Cloud Elementary

AD20852 6 sessions \$49
6:15-7 p.m. Tue Mar. 18-Apr. 22
Grey Cloud Elementary

Easy Partner Dancing for All Occasions

Instructor: Deanna Constantine

No matter the occasion, you'll be prepared to dance! Learn fun, easy mini-routines to your favorite songs

AD21252 4 sessions \$69
7-8:30 p.m. Tue Jan. 21-Feb. 11
Red Rock Elementary

"Let's Get this Party Started" Line Dance

Instructor: Monica Mohn

Learn a fun and easy routine that captures the energy and joy of Pink's song! All ages and family-friendly!

AD21231 1 session
6-7 p.m. Thu Feb. 20
Oltman Middle School

Age 15+\$15
Age 6-14\$8

Children ages 6-14 must be accompanied by a registered adult (aged 15 or older).

Swing Dance -One Night of Fun!

Instructor: Monica Mohn

Warm up with Swing dance! Learn simple patterns and fun spins to hit the dance floor together.

Beginner-friendly. Couples only.

AD21291 1 session \$39
6-9 p.m. Thu Feb. 20
Oltman Middle School

Pickleball Drop-in and Play

Drop in with a friend or pair up at the courts. Purchases passes at sowashco.ce.eleyo.com.

Must know rules and have game experience.

4-8 p.m. M/W/F \$3/pass
District Program Center



Pickleball Lessons for Beginners

Instructor: TGA Premier Sports

Learn the rules, equipment, and practice skills. Equipment is provided.

AD29301 4 sessions \$99
5:15-6:15 p.m. Thu Jan. 9-30
District Program Center

AD29302 4 sessions \$99
5:15-6:15 p.m. Thu Feb. 6-27
District Program Center

AD29303 4 sessions \$99
5:15-6:15 p.m. Thu Mar. 6-Apr. 3
District Program Center

AD29304 4 sessions \$99
6:15-7:15 p.m. Thu Jan. 9-30
District Program Center

AD29305 4 sessions \$99
6:15-7:15 p.m. Thu Feb. 6-27
District Program Center

AD29306 4 sessions \$99
6:15-7:15 p.m. Thu Mar. 6-Apr. 3
District Program Center



Pickleball Lessons - Advanced Beginner

Instructor: Linda Kauss

Develop stroke technique on the serve, volley and drive shots. Work on movement and comfort at the non-volley zone.

AD29362 4 sessions \$99
7:15-8:15 p.m. Thu Feb. 6-27
District Program Center

AD29363 4 sessions \$99
7:15-8:15 p.m. Thu Mar. 6-Apr. 3
District Program Center

Pickleball Intermediate Drill Sessions

Instructor: Linda Kauss

Work on your third shot drop, transition zone shots and dinking with purpose and strategy.

AD29372 4 sessions \$79
8:15-9 p.m. Thu Feb. 6-27
District Program Center

AD29373 4 sessions \$79
8:15-9 p.m. Thu Mar. 6-Apr. 3
District Program Center

GAIN SKILLS

South Washington County Community Band

Instructor: Kamilah Michelle Gobran

The Community Band of South Washington County has been going strong for over 30 years! All ages and instruments are welcome. Expand your talents and enjoy the camaraderie of fellow musicians—all while sharing music with appreciative local audiences. Join anytime!

AD13931 19 sessions
7-9 p.m. Tue Jan. 7-May. 27
Cottage Grove Middle School

Adult.....\$30
Student\$20

Mah Jongg Lessons-For Absolute Beginners

NEW Instructor: Melinda Colwell

Learn Mah Jongg, master the basics, and play confidently while making new friends and challenging your brain in a fun, supportive environment.

Please bring \$15 to the first class for National Mah Jongg League membership.



AD25171 6 sessions \$75
3-4:30 p.m. Wed Feb. 19-Apr. 2
District Program Center

AD25172 6 sessions \$75
5:30-7 p.m. Wed Feb. 19-Apr. 2
District Program Center

Ramadan: Fasting, Feasting, and Feeding

NEW Led by Building Blocks of Islam

Learn about Muslim culture, including Ramadan, why Muslims fast, Minnesota fasting hours, and how Eid is celebrated. Includes discussion, Q&A and snacks.



AD25271 1 session \$10
6:30-9 p.m. Thu Feb. 20
East Ridge High School

Learn Fun Improv Techniques for Everyday Life!

Instructor: Amy Stedman

Practice quick thinking, stay positive, and turn mistakes into growth. Gain confidence, improve listening, and sharpen communication through interactive improv exercises.

AD24251 1 session \$29
6:30-8 p.m. Mon Feb. 31
District Program Center



American Sign Language (ASL) Lessons - for Beginners

Instructor: Karlie Kurtz

Explore essential topics in ASL, including greetings, names, and interests, while gaining practical skills and an understanding of Deaf culture.

AD29121 5 sessions \$149
6-7 p.m. Thu Jan. 16-Feb. 13
Woodbury High School

AD29122 5 sessions \$149
6-7 p.m. Thu Feb. 20-Mar. 27
Woodbury High School

Adult Conversational Spanish ONLINE

Instructor: Futura Language Professionals

Build your Spanish skills from beginner to advanced with interactive classes focused on conversation, grammar, and cultural insights.

Futura Language t-shirts will be available for \$20 at registration.

Beginner Part 1

Learn basic conversation, grammar, and vocabulary like greetings, food, and numbers, with fun cultural anecdotes.

OL29531 6 sessions \$125
6-7 p.m. Mon Feb. 24-Apr. 7

OL29532 6 sessions \$125
6-7 p.m. Tue Feb. 18-Mar. 25

OL29533 6 sessions \$125
6-7 p.m. Wed Feb. 19-Mar. 26

Beginner Part 2

Continue your Spanish journey with conversations about directions, weather, and family, while exploring Spanish culture, food, and traditions.

OL29451 6 sessions \$125
6-7 p.m. Mon Feb. 24-Apr. 7

OL29452 6 sessions \$125
6-7 p.m. Tue Feb. 18-Mar. 25

Intermediate Part 2

Expand your conversational Spanish with practical scenarios, complex grammar, and engaging discussions on music, sports, and famous figures.

OL29441 6 sessions \$125
6-7 p.m. Wed Feb. 19-Mar. 26

Advanced Part 2

Challenge yourself with advanced Spanish grammar and explore the subjunctive, a special verb form used to express moods and uncertainty in conversations.

OL29481 6 sessions \$125
6-7 p.m. Thu Feb. 20-Mar. 27

Moonlight Snowshoe Hike Led by Carpenter Nature Center

Enjoy a peaceful winter night under the stars. Learn about snowshoeing basics, nocturnal animals and winter ecology at the nature center. Then warm up with popcorn and cider by the fire.

At least 6 inches of snowcover is needed to use snowshoes. Snowshoes will be provided.

AD25111 1 session \$15
6-9 p.m. Mon Jan. 13
Carpenter Nature Center, Hastings

Maple Syrup at Carpenter Nature Center

NEW Led by Carpenter Nature Center

Discover how to make maple syrup, from harvesting sap to turning it into syrup and sampling the final product.

AD25131 1 session \$10
1:30-3 p.m. Sat Mar. 8
Carpenter Nature Center, Hastings

Recycling Food Scraps at Home with the Food Scraps Pickup Program

Instructor: Hannah Keller

20% of trash is food waste! Learn how to recycle food scraps easily at home (simply place food scrap bags into your regular trash can), reduce waste, and get started with this simple, innovative program.

AD29471 1 session Free
6:30-7:30 p.m. Wed Feb. 5
Lake Middle School



Pruning Trees & Shrubs ONLINE

Instructor: Paul Richtman

Learn essential pruning techniques to care for trees and shrubs, ensuring their health, longevity, and enhancing your home's landscape.

OL27451 1 session \$20
6:30-8:30 p.m. Tue Mar. 4

Vegetable Gardening for Beginners ONLINE

Instructor: Paul Richtman

Get practical tips for starting a successful vegetable garden, from location and soil prep to planting, harvesting, and more.

OL27471 1 session \$20
6:30-8 p.m. Wed Mar. 5

Backyard Fruits ONLINE

Instructor: Paul Richtman

Learn to select and care for fruit plants in Minnesota, from planting and pruning to disease control for a bountiful harvest. We'll cover strawberries and raspberries in detail, as well as, blueberries, apples, cherries, plums and honeyberries.

OL27101 1 session \$20
6:30-8:30 p.m. Mon Mar. 10

Growing Blueberries in Your Backyard

ONLINE

Instructor: Paul Richtman

Learn how to grow blueberries, including site selection, soil preparation, plant care, and protecting them from birds, rabbits and winter weather.

OL27461 1 session \$20
6:30-8 p.m. Mon Mar. 17



Paid Advertisement

Life can be difficult, delicate, and complex. We lead with compassion, curiosity, and courage.

BRAVE X SOUL

THERAPY

Professional therapy services in St. Paul Park, Edina, and online via Telehealth.

Take the brave first step. Connect with one of our trusted therapists today.

bravesoul.org | info@bravesoul.org | 952.500.3830

Register Online at sowashco.ce.eleyo.com | Winter 2025

GAIN SKILLS

Grow Your Own Vegetables ONLINE

Instructor: Paul Richtman

Discover how to easily grow vegetables with tips on site selection, soil prep, pest control, harvesting, and extending the growing season.

OL27071 1 session \$20
6:30-8:30 p.m. Tue Mar. 18

Container Garden Like a Pro ONLINE

Instructor: Michelle Mero Riedel

Learn to create vibrant container gardens with fast-growing, colorful plants, expert tips, beautiful garden combinations, and detailed handouts.

OL27211 1 session \$25
7- 8:30 p.m. Wed Mar. 19

Successful Composting ONLINE

Instructor: Paul Richtman

Get ready to compost yard waste! Learn how to build, maintain, and use a backyard compost pile in your yard or garden.



OL27181 1 session \$15
6:30-7:30 p.m. Mon Mar. 24

Home Basics

Instructor: Ray F Lehman

Gain essential home maintenance skills. Learn to do minor repairs and when to call a pro.



Plumbing

Learn how your home's plumbing system works and troubleshoot common issues to avoid costly repairs.

AD26061 1 session \$29
5:45-7:45 p.m. Mon Jan. 27
District Program Center

Electrical

Demystify home electrical systems and discover simple repairs you can handle. Learn when it's best to hire a professional.

AD26051 1 session \$29
5:45-7:45 p.m. Thu Feb. 13
East Ridge High School

Reuse/Repair - Save Money and the Environment! NEW

Instructor: Jessica Rose Hall

Learn to mend clothes, resew buttons, repurpose old items, and discover local repair resources while exploring the benefits of reusing.

AD29501 1 session \$0
6:30-7:30 p.m. Mon Mar. 3
District Program Center

Photography

Instructor: Kent Johnson

Master photography skills to tell compelling stories through your images, from basic elements to advanced techniques.

Instruction is for digital single lens reflex (DSLR) cameras; No "point & shoot" cameras.



Level 1 - Essential Elements

Discover the basics of photography, including composition, the exposure triangle, and shooting modes to enhance your storytelling.

AD26411 5 sessions \$99
5:45-7:45 p.m. Thu Feb. 6-Mar. 6
East Ridge High School

Level 2 - More Essential Elements

Build on your skills with advanced techniques in metering, exposure, and focus modes, plus hands-on practice.

AD26041 5 sessions \$99
5:45-7:45 p.m. Thu Mar. 20-Apr. 17
East Ridge High School

How to Earn Money with Your Voice ...

Getting Started in Voiceovers ONLINE ON-DEMAND

Instructor: Voices for All

Learn how to earn money from home with voiceovers. Explore trends, tools, and receive coaching from a professional voice actor.

Includes one 90-minute, one-on-one, video chat class to be scheduled at your convenience.

OL29401 1 session \$49

Power Up with Google Suites: Essential Tools for Everyday Tasks ONLINE NEW

Instructor: Nickie Welsh

Master essential Google Suite tools to improve daily tasks and enhance your digital skills efficiently.

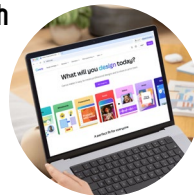
Attend live online or review the recorded class at your convenience.

OL29861 1 session \$29
12-1 p.m. Thu Jan. 9

Harness the Power of Canva ONLINE NEW

Instructor: Nickie Welsh

Discover how to create stunning visuals with Canva! Use templates and get step-by-step guidance.



OL29751 1 session \$29
12-1 p.m. Tue Jan. 14

YouTube Channel Starter Kit: Launch in 60 Minutes ONLINE NEW

Instructor: Nickie Welsh

Learn to create and launch your own YouTube channel! Share your hobbies and talents on this popular platform.

OL29761 1 session \$29
12-1 p.m. Thu Jan. 16

One-Hour Instagram Mastery: Grow Your Business Today ONLINE NEW

Instructor: Nickie Welsh

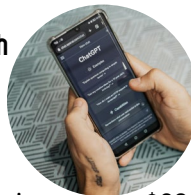
Boost your business using Instagram! Discover strategies to grow your audience, create engaging content, and increase sales effectively.

OL29771 1 session \$29
12-1 p.m. Tue Jan. 21

Practical ChatGPT Training for Everyone ONLINE NEW

Instructor: Nickie Welsh

Explore ChatGPT and learn how to use this AI tool in everyday life and work.



OL29781 1 session \$29
12-1 p.m. Tue Jan. 28

Parents with Littles-Your Technology Safety Toolbox ONLINE NEW

Instructor: Nickie Welsh

Learn essential tips to keep your children safe online and manage their technology use in today's connected world.

OL29801 1 session \$29
12-1 p.m. Thu Jan. 23

Cell Phones & Parenting: Balancing Connectivity and Safety ONLINE NEW

Instructor: Nickie Welsh

Discover strategies for managing your child's social media, setting boundaries, ensuring online safety, and promoting healthy screen habits.

OL29811 1 session \$29
12-1 p.m. Tue Feb. 4

Google Sheets for Beginners ONLINE NEW

Instructor: Nickie Welsh

Transform from novice to expert in Google Sheets! Master data entry, organization, analysis, and visualization to boost your productivity.

OL29821 1 session \$29
12-1 p.m. Thu Feb. 6

My Kid Wants To Be a YouTuber-Help! ONLINE NEW

Instructor: Nickie Welsh

Guide your child in creating a safe YouTube channel, covering setup, safety settings, and managing their creative outlet.



Discover how this hobby can evolve into a potential career.

Children need to be at least 13 years old and have a parent or guardian's permission to create a YouTube channel.

OL29831 1 session \$29
12-1 p.m. Tue Feb. 11

How To Use Venmo-the Popular Mobile Payment Service-Safely! ONLINE NEW

Instructor: Nickie Welsh

Learn to use Venmo for secure payments and transactions, avoiding fees, and discussing mobile payments confidently.



OL29841 1 session \$29
12-1 p.m. Thu Feb. 13

Create Social Media Content Without Panicking ONLINE NEW

Instructor: Nickie Welsh

Overcome camera nerves and create engaging social media content for your business with practical tips and step-by-step guidance.

OL29851 1 session \$29
12-1 p.m. Tue Mar. 18

MANAGE MONEY



4 Strategies for a Smarter College Search

NEW **Instructor: Cozy Wittman**

This year has brought big changes to college planning, from admissions and financial aid to testing policies. Learn how to adjust your strategy to get the best opportunities for your high school student.

AD29491 1 session
7:30-8:30 p.m. Mon Feb. 10
Per person.....\$12
Family.....\$20

Retirement Planning Today

Instructor: Jeff Clark and Matt Gulbransen

Learn essential strategies for retirement planning, including wealth building, managing investment risks, and adapting to new tax and estate laws. A 225-page illustrated textbook is included. Bring your spouse for no additional charge.

AD26611 2 sessions \$49
6:30-9:30 p.m. Thu Jan. 30-Feb 6
East Ridge High School

AD26612 2 sessions \$49
6:30-9:30 p.m. Tue Feb. 4-11
East Ridge High School

Medicare 101 **Instructor: Kati Rolloff**

Understand Medicare coverage, including Parts A, B, C, and D, so you can confidently choose the right plan for your needs.

AD16171 1 session \$5
6-7 p.m. Mon Feb. 3
District Program Center

Ladies Only: Your Strategic Guide to Maximizing Social Security Benefits

Instructor: Rolf White

Discover strategies for women to maximize Social Security benefits, including spousal options, delaying claims for higher payouts, income limits while working, and tax minimization for a more secure retirement.

AD26631 1 session \$15
6:30-8 p.m. Wed Feb. 5
Lake Middle School

The Retirement Income Rubik's Cube

Instructor: Terrie Amundson

Explore how changes in your retirement income strategy impact your finances, including Medicare premiums and taxes.

AD29731 1 session \$15
6-7:30 p.m. Thu Feb. 13
East Ridge High School

Life, Disability, and Long-term Care Insurance-Make the Right Choices!

Instructor: John Mazzara

Explore various types of insurance, their differences, and how they can help you and others, including options for existing policies.

AD27561 1 session Free
6-9 p.m. Mon Feb. 17
District Program Center

How Wills and Trusts Can and Cannot Help You

Instructor: Jeffrey Scott

Learn about estate planning, including property titles, wills vs. trusts, and the probate process for smooth transitions after death or disability.

AD26701 1 session \$19
6-7:30 p.m. Mon Feb. 17
District Program Center



Social Security for Couples: Maximizing Your Benefits Together

Instructor: Rolf White

Explore strategies for couples nearing retirement to maximize Social Security benefits, including how marriage impacts benefits, optimal claiming times, tax implications, and coordination with other income sources like pensions and 401(k)s.

AD26621 1 session
6:30-8 p.m. Thu Mar. 20
East Ridge High School
Per person.....\$15
Per couple.....\$25

Paid Advertisement



Custom Water Treatment

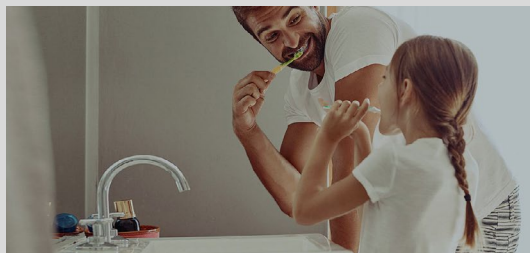
Providing South Washington County School District and their families with the best water since 1927.

CONTACT US

651-452-4488

www.mckayscompany.com

780 19th St, Newport, MN 55055



COUPONS

Free Water Test

\$120 off Water Softener

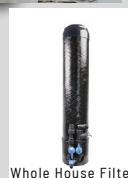
\$100 off Reverse Osmosis System



Iron & Odor Filter



Reverse Osmosis



Whole House Filter



Water Softener

MANAGE MONEY

Downsizing in the Current Housing Market!

Instructor: John Mazzara

Considering downsizing? Get guidance on where to start, options available, and a free Downsizing Made Easy guide, plus discounts and home evaluations.

AD27541 1 session Free
6-9 p.m. Mon Feb. 24
District Program Center

First-Time Buyers: Learn How to Buy a Home Using Special Loans, Grants and First Generation Home Buyer Funds!

Instructor: John Mazzara

Understand the home-buying process and discover unique funding for first-time buyers, allowing you to purchase a home with just \$1,000 down.

You are generally a first-time buyer if you have not owned a home in the past 3 years

AD27571 1 session Free
6-9 p.m. Mon Mar. 3
District Program Center



Home Buyer Workshop **ONLINE**

Instructor: Lindsey Palin

Join our free home buying workshop to learn about finding a realtor, mortgage options, and steps to make home ownership possible.

OL27631 1 session Free
12-1 p.m. Wed Mar. 5

What Happens If I Need a Nursing Home?

Instructor: Jeffrey Scott

Essential for families facing nursing home decisions, this class covers asset protection, Medicare vs. Medicaid, and veterans' benefits for future planning

AD24791 1 session \$19
6-7:30 p.m. Thu Mar. 20
East Ridge High School

ADULTS WITH DEVELOPMENTAL DISABILITIES

Opportunities for adults with developmental disabilities to learn and engage with others and become active citizens in their communities.

The Community Bridge Consortium facilitates the participation of adults with disabilities in all aspects of Community Education programming by providing reasonable support and accommodations.

The Community Bridge Consortium:

- Designed for teens and adults with developmental cognitive disabilities
- Customized education and enrichment classes for adults with developmental disabilities
- Opportunities to socialize with peers and friends
- Fine arts experiences
- Sign language interpreters
- Resources for disabilities awareness and education
- Adapted materials and equipment
- Registration assistance

The consortium is sponsored by the school districts of South Washington County, Mahtomedi, North St. Paul-Maplewood-Oakdale, Roseville Area, and White Bear Lake Area.

To Register:

Visit isd622.ce.eleyo.com or call 651-748-7232 to request the latest brochure.



"I loved seeing the animals and nature. I got to rustle the turkeys back into their coop!"

- David L.

Pictured: Evening at Shepard Farm



Online Career Training

**Don't just find a job.
Start a career!**

Categories include:

- Medical
- Language
- Art
- Business
- Writing
- Trades
- Computer
- and more!

Choose from over 250 courses.

Six-week enrichment classes:
ed2go.com/sowashcoCE

In-depth career training courses:
careertraining.ed2go.com/sowashcoCE



24-HOUR ACCESS | EXPERT INSTRUCTORS | CONVENIENT | AFFORDABLE

(651) 964-2020

www.mn-np.com/



MINNESOTA NEUROPSYCHOLOGY

**Diagnostic Assessments for
Learning Differences such as
Dyslexia, ADHD, and others.**

**Contact us today to learn more
info@mn-np.com**

Minnesota Neuropsychology, LLC
370 Selby Avenue, Suite 216 | St Paul | MN | 55102

FACILITY RENTAL

South Washington County Schools (SoWashCo Schools) encourages the use of district buildings and schools by outside groups and community members. For your next meeting or event in Cottage Grove, Newport, St. Paul Park or Woodbury, consider your local school facilities.

Why District Facilities?

- Affordable and close to home
- Large and small group accommodations
- Smoke free environment
- Handicap accessible facilities

Spaces Available

- Conference rooms
- Lecture halls
- Gyms
- Auditoriums
- Cafeterias
- Classrooms
- Fields

Space is available for rent in the evenings and on weekends.



Information and Reservations

Please contact the facilities scheduler at 651-425-6604 or visit commed.sowashco.org/facility-rental

GREAT RIVERS

ADULT EDUCATION CONSORTIUM

ADULT COLLEGE CAREER ENGLISH SKILLS SERVICES

SoWashCo
COMMUNITY EDUCATION



No English?

Text 651-270-3266 or email us to learn more about our FREE programs.

Envíe un mensaje de texto o correo electrónico, en su propio idioma, para solicitar información sobre nuestros programas GRATUITOS.

651-425-6634 | greatrivers@sowashco.org

- Learn English
- Finish your High School Diploma
- Prepare for the High School Equivalency Test
- Take an Official GED or HiSet Test



“This program has proved invaluable in helping me create a better future for myself and my family.”



Our goal is to create a welcoming and supportive place for people to learn and make connections.

Join Our Programs

We offer morning, afternoon and evening classes in Cottage Grove, Hastings and Woodbury. You can join our FREE program if you're 17 or older, not attending high school, and need help with reading, math, writing, or speaking English below the 12th-grade level.

Pursue Higher Education

- Master foundational reading, writing and math skills
- Attain your high school diploma
- Prepare for the high school equivalency test
- Take an official GED test at one of our two official Pearson Vue Testing Centers
- Explore higher education options

Connect with the Community

- Navigating systems within the community
- County services
- College application process
- Employer benefits packages
- Public school system
- Prepare for your citizenship exam

Advance Your Career

- Practice interviewing
- Explore career options
- Find employment opportunities
- Prepare for the ParaPro Assessment
- Achieve stability and independence

Gain Computer and Online Skills

- Develop basic computer skills
- Learn to use email and the Internet
- Learn to use Microsoft Word, Excel, PowerPoint and Outlook

Learn English

- Learn to read, speak and write in English
- Increase your English language proficiency
- Improve your pronunciation

Locations:

District Program Center

8400 East Point Douglas Rd. S
Cottage Grove, MN 55016

Valley Creek Mall

1750 Weir Dr.
Woodbury, MN 55125

Tilden Community Center

310 River St.
Hastings, MN 55033



Learn more and register:
commed.sowashco.org/greatrivers

AQUATICS

SoWashCo Community Education Aquatics program offers swimming lessons, specialty classes, fitness and recreational opportunities starting at 12 months of age through adult.

Course offerings typically include:

Swimming Lessons

- Toddler
- Preschool
- Beginner
- Intermediate
- Advanced
- Adult Beginner
- Special Needs
- Semi Private
- Private
- Diving

Find class schedules at sowashco.ce.eleyo.com

JOIN US FOR
Open Swim on
non-school days.
Register at
bit.ly/SWnsd



Don't know which class level to sign up for next?

Register for the student's current level. Our staff will adjust their placement if necessary.

For course information and registration policies visit website, commed.sowashco.org/aquatics. Register or view class times and locations at sowashco.ce.eleyo.com.

MIDDLE SCHOOL



SoWashCo Community Education middle school athletics emphasizes skill development and team play. Students learn the fundamentals of the sport and play matches against other SoWashCo middle schools.

Middle School Boys Basketball

Grade 7

JA220 23 sessions \$165
2:45-4:45 p.m. M-Th Jan. 8-Feb. 20
Cottage Grove Middle School

JA230 23 sessions \$165
2:45-4:45 p.m. M-Th Jan. 8-Feb. 19
Lake Middle School

JA240 22 session \$165
2:45-4:45 p.m. M-Th Jan. 8-Feb. 20
Oltman Middle School

JA250 21 session \$165
2:45-4:45 p.m. M-Th Jan. 8-Feb. 20
Woodbury Middle School

Grade 8

JA221 23 sessions \$165
2:45-4:45 p.m. M-Th Jan. 8-Feb. 20
Cottage Grove Middle School

JA231 23 sessions \$165
2:45-4:45 p.m. M-Th Jan. 8-Feb. 19
Lake Middle School

JA241 22 session \$165
2:45-4:45 p.m. M-Th Jan. 8-Feb. 20
Oltman Middle School

JA251 21 session \$165
2:45-4:45 p.m. M-Th Jan. 8-Feb. 20
Woodbury Middle School



No transportation will be provided for middle school athletics. Families must transport their students to and from practices and matches.

All participants MUST have a sports physical on file with the Community Education office. Download forms at commed.sowashco.org/athletics.

CAMPS AND CLINICS

Little Royals Dance Camp

Learn a dance routine with the Dance Team and perform at the Senior Showcase. No experience required! Includes performance T-shirt.

Grade K-8

C265 2 sessions \$40
4-6:30 p.m. Thu, Fri Jan. 30-31
Woodbury High School



TGA Winter Golf Enrichment Program

Learn golf skills like swinging, chipping, and putting in a fun, safe environment with friendly instructors.

Grade K-5

C315 5 sessions \$154
3:55- 4:55 p.m. Tue Jan. 21-Feb. 18
Liberty Ridge Elementary

C316 6 sessions \$175
3:15-4:15 p.m. Wed Jan. 22-Feb. 26
Grey Cloud Elementary

C317 6 sessions \$175
3:15-4:15 p.m. Thu Jan. 23-Mar. 6
Nuevas Fronteras Spanish Immersion

C318 5 sessions \$154
3:15-4:15 p.m. Mon Jan. 27-Mar. 3
Middleton Elementary

TGA Winter Tennis Enrichment Program

Develop tennis skills through fun games and activities, learning groundstrokes, volleys, and serves with supportive instructors.

Grade K-5

C319 6 sessions \$175
3:55- 4:55 p.m. Thu Jan. 23-Feb. 27
Bailey Elementary

TGA Winter Pickleball Enrichment Program

Learn pickleball fundamentals through interactive games and drills, practicing sportsmanship and teamwork in a safe and fun setting.

Grade K-5

C322 6 sessions \$175
3:50-4:50 p.m. Wed Jan. 22-Feb. 26
Valley Crossing Elementary School

C323 6 sessions \$175
3:55- 4:55 p.m. Tue Jan. 21-Mar. 4
Red Rock Elementary

C324 6 sessions \$175
2:30-3:30 p.m. Thu Jan. 23-Mar. 6
Royal Oaks Elementary

Happy Feet Preschool Soccer

Happy Feet teaches soccer skills through fun, imaginative play, fostering development and creativity with engaging activities and small-sided scrimmages.

Age 2-3

Learn soccer skills through imaginative play and storytelling, using fun themes.

C350 4 sessions \$65
6-6:30 p.m. Tue Jan. 7-28
Grey Cloud Elementary

C353 4 sessions \$65
6-6:30 p.m. Tue Feb. 4-25
Grey Cloud Elementary

C356 4 sessions \$65
6-6:30 p.m. Tue Mar. 18-Apr. 8
Grey Cloud Elementary

Age 4-5

Build soccer skills and teamwork with a focus on cooperation, goal setting, and motor skill development.



C351 4 sessions \$65
6:30-7 p.m. Tue Jan. 7-28
Grey Cloud Elementary

C354 4 sessions \$65
6:30-7 p.m. Tue Feb. 4-25
Grey Cloud Elementary

C357 4 sessions \$65
6:30-7 p.m. Tue Mar. 18-Apr. 8
Grey Cloud Elementary

Age 6-7

Practice advanced dribbling skills in a traditional soccer setting, gradually introducing pressure for improved decision-making.

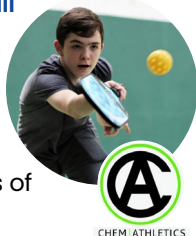
C352 4 sessions \$65
7-7:40 p.m. Tue Jan. 7-28
Grey Cloud Elementary

C355 4 sessions \$65
7-7:40 p.m. Tue Feb. 4-25
Grey Cloud Elementary

C358 4 sessions \$65
7-7:40 p.m. Tue Mar. 18-Apr. 8
Grey Cloud Elementary

CHEM (Character, Hand, Eye and Mind) Middle School Pickleball

Learn pickleball fundamentals in a fun program covering serving, scoring, rallying, and key terms for players of all skill levels.



Grade 6-8

C296 5 sessions \$99
2:45-4:15 p.m. Mon Jan. 27-Mar. 3
Lake Middle School

Soccer Shots

This high-energy soccer program focuses on individual skills, fitness, sportsmanship, and teamwork through fun games and team competitions.



Grade K-2

C710 10 sessions \$225
3:55-4:40 p.m. Fri Jan. 10-Mar. 28
Bailey Elementary

C711 10 sessions \$225
3:15-4 p.m. Fri Jan. 10-Mar. 28
Red Rock Elementary

C712 8 sessions \$180
3:55-4:40 p.m. Mon Jan. 6-Apr. 7
Nuevas Fronteras Spanish Immersion

C713 8 sessions \$180
3:55-4:40 p.m. Mon Jan. 6-Apr. 7
Valley Crossing Elementary

My7on7 Football Passing League

Step into the future of football! This co-ed, minimal contact (touch) league is for youth in Kindergarten-grade 8. Learn and develop football skills in a dynamic, fast-paced environment.



Soft shell helmets are MANDATORY and are available for purchase or rent at registration.

Schedule (all grade levels):

Each session will last about 1-1.5 hours and will include two games. Exact schedules for each grade will be determined closer to the kick-off date.

- 2-7 p.m., Sundays, Apr. 6, 13 and 27 at East Ridge High School
- **My7on7 State Championship** will be held on Sunday, May 4 at Stillwater High School.

Kindergarten

C209 4 sessions \$55

Grade 1-8

C208 4 sessions

Register from Dec. 1-Mar. 2 \$130

Late Registration after Mar. 2 \$180

DASH Sports Basketball Tykes Camp

Get an introduction to basketball basics with fun drills and mini-games focused on dribbling, passing, and shooting.

Age 2-5

C225 4 sessions \$85
5:15-6 p.m. Tue Jan. 14-Feb. 4
Valley Crossing Elementary School

C226 4 sessions \$85
5:15-6 p.m. Thu Jan. 16-Feb. 6
Liberty Ridge Elementary

DASH Sports Jr. NBA Basketball Camp

Improve skills through drills and games.

Players may select their favorite NBA Team, name and number on their jersey for an additional \$25 fee.

Grade K

C227 5 sessions \$99
9-9:45 a.m. Sat Jan. 25-Feb. 22
Red Rock Elementary

Grade 1

C228 5 sessions \$99
10-10:45 a.m. Sat Jan. 25-Feb. 22
Red Rock Elementary

Grade 2-4

C229 5 sessions \$109
11 a.m.-12 p.m. Sat Jan. 25-Feb. 22
Red Rock Elementary



DASH Sports Basketball Camp

Build skills in shooting, passing, dribbling, and defense through games and drills in a fun, positive setting.

Grade K-5

C215 3 sessions \$79
2:30-3:30 p.m. Mon Jan. 13-Feb. 3
Crestview Elementary

C216 3 sessions \$79
3:55-4:55 p.m. Mon Jan. 13-Feb. 3
Nuevas Fronteras Spanish Immersion

C217 4 sessions \$89
2:30-3:30 p.m. Tue Jan. 14-Feb. 4
Royal Oaks Elementary

C218 4 sessions \$89
3:50-4:50 p.m. Tue Jan. 14-Feb. 4
Valley Crossing Elementary School

C219 4 sessions \$89
3:15-4:15 p.m. Wed Jan. 15-Feb. 5
Grey Cloud Elementary

C220 4 sessions \$89
3:55-4:55 p.m. Wed Jan. 15-Feb. 5
Red Rock Elementary

C221 4 sessions \$89
3:15-4:15 p.m. Thu Jan. 16-Feb. 6
Woodbury Elementary

C222 4 sessions \$89
3:55-4:55 p.m. Thu Jan. 16-Feb. 6
Liberty Ridge Elementary

C223 4 sessions \$89
3:15-4:15 p.m. Fri Jan. 17-Feb. 7
Middleton Elementary

C224 4 sessions \$89
3:55-4:55 p.m. Fri Jan. 17-Feb. 7
Bailey Elementary

CAMPS AND CLINICS

DASH Sports Indoor Soccer Camp

Campers develop skills in dribbling, passing, shooting, and defense while playing games in a positive, team-building environment.



Grade K-5

C230 3 sessions \$79
2:30-3:50 p.m. Mon Feb. 10-Mar. 3
Crestview Elementary

C231 3 sessions \$79
3:55-4:55 p.m. Mon Feb. 10-Mar. 3
Nuevas Fronteras Spanish Immersion

C232 3 sessions \$79
2:30-3:30 p.m. Tue Feb. 11-Mar. 4
Royal Oaks Elementary

C233 3 sessions \$79
3:50-4:50 p.m. Tue Feb. 11-Feb. 25
Valley Crossing Elementary School

C234 4 sessions \$89
3:15-4:15 p.m. Wed Feb. 12-Mar. 5
Grey Cloud Elementary

C235 4 sessions \$89
3:55-4:55 p.m. Wed Feb. 12-Mar. 5
Red Rock Elementary

C236 3 sessions \$79
3:15-4:15 p.m. Thu Feb. 20-Mar. 6
Woodbury Elementary

C238 3 sessions \$79
3:15-4:15 p.m. Fri Feb. 21-Mar. 7
Middleton Elementary

C239 3 sessions \$79
3:55-4:55 p.m. Fri Feb. 21-Mar. 7
Bailey Elementary

DASH Sports Indoor Soccer Tykes Camp

Young players practice soccer basics with skill-based games focusing on dribbling, passing, and shooting.

Age 2-3

C240 3 sessions \$75
5:15-6 p.m. Tue Feb. 11-Feb. 25
Valley Crossing Elementary School

Age 2-5

C241 4 sessions \$85
5:15-6 p.m. Wed Feb. 12-Mar. 5
Red Rock Elementary

DASH Sports No School Multi-Sport Camp

Kids enjoy a fun-filled day of sports like soccer, basketball, and flag football, plus games like dodgeball and kickball.

Grade K-5

C242 1 session \$95
9 a.m.-4 p.m. Mon Mar. 17
Oltman Middle School

Skyhawks Volleyball Camp

Learn volleyball basics with drills and scrimmages, focusing on skills like passing, spiking, blocking, and teamwork.



Age 5-7

C250 4 sessions \$89
3:15-4:15 p.m. Tue Jan. 21-Feb. 11
Middleton Elementary

Skyhawks Floor Hockey Camp

Get a fun intro to hockey fundamentals, focusing on passing, stickhandling, and shooting through engaging activities.



Age 5-7

C251 4 sessions \$89
3:15-4:15 p.m. Thu Jan. 30-Feb. 20
Middleton Elementary

Skyhawks Floor Hockey Tots

Specially crafted for our youngest athletes, these playful classes make learning essential skills like stickhandling, passing, and shooting a breeze

Age 3-4

C252 4 sessions \$69
4:25-5:55 p.m. Thu Jan. 30-Feb. 20
Middleton Elementary

Skyhawks Non-School Day Multi-Sport Camp

A fun, full-day camp with basketball, soccer, and flag football activities for kids to enjoy on non-school days.



Age 5-10

C253 1 session \$69
9 a.m.-3:30 p.m. Fri Feb. 14
Hillside Elementary

Skyhawks Basketball Camp

Develop skills like dribbling, shooting, and teamwork with games that adapt to all skill levels.

Age 5-8

C254 4 sessions \$89
3:55-4:55 p.m. Tue Feb. 18-Mar. 18
Bailey Elementary

Skyhawks Hoopster Tots Camp

Learn basketball basics, focusing on dribbling, shooting, and teamwork in a playful and engaging setting.

Age 3-4

C255 4 sessions \$69
5:05-5:35 p.m. Tue Feb. 18-Mar. 18
Bailey Elementary

Skyhawks PickleBall

Learn pickleball fundamentals like serving, volleying, and groundstrokes through fun exercises and games for all skill levels.

Age 5-7

C256 4 sessions \$89
3:55-4:55 p.m. Thu Feb. 27-Mar. 27
Red Rock Elementary

C257 4 sessions \$89
5:05-6:05 p.m. Thu Feb. 27-Mar. 27
Red Rock Elementary

Skyhawks Soccer Camp

Develop technical soccer skills and sport knowledge in a supportive, skill-building environment.



Age 5-8

C258 4 sessions \$89
3:55-4:55 p.m. Tue Mar. 25-Apr. 15
Grey Cloud Elementary

Skyhawks Soccer Tots Camp

Fun soccer-themed classes help kids build motor skills, self-confidence, and early soccer fundamentals.

Age 3-4

C259 4 sessions \$69
5:05-5:35 p.m. Tue Mar. 25-Apr. 15
Grey Cloud Elementary

Skyhawks Mini-Hawk Soccer

A safe, structured environment introducing kids to the basics of soccer in a supportive, fun-filled atmosphere.

Age 4-5

C260 4 sessions \$79
5:45-6:25 p.m. Tue Mar. 25-Apr. 15
Grey Cloud Elementary

Skyhawks Tennis Camp

Practice grips, footwork, strokes, and serves through drills, learning tennis skills and etiquette in an exciting setting.

Age 5-7

C261 4 sessions \$89
3:55-4:55 p.m. Thu Apr. 3-24
Grey Cloud Elementary

Age 8-10

C262 4 sessions \$89
5:05-6:05 p.m. Thu Apr. 3-24
Grey Cloud Elementary

RECREATION



Miss Laura's Little Athletes Gym Class

Experience fun music and movement activities promoting early childhood development. Enjoy winter games, Valentine songs, and St. Patrick's fun. Includes a free superhero cape t-shirt. *Children must be accompanied by a caregiver.*

Ages 1 (walking)-5

YE2751 10 sessions \$164
9-9:45 a.m. Wed Jan. 15-Mar. 26
All Saints Lutheran

YE2752 10 sessions \$164
10-10:45 a.m. Wed Jan. 15-Mar. 26
All Saints Lutheran

Superhero Training Camp

Young superheroes will enjoy obstacle courses, web-slinging, and hammer throwing. Create a mask, get a goodie bag, and take home a certificate. Costumes encouraged!

Includes open play before and after class.



Age 3 - 6

YE2072 1 session
10 a.m.-12 p.m. Sun Feb. 9
The Little Village

First child \$30
Additional child..... \$24

Bowling Club

Learn the skills and techniques of bowling including how to keep score and proper etiquette while meeting new friends.



Grade 1-7

YE175 6 sessions \$108
9:30-10:30 a.m. Sat Jan. 11-Mar. 1
Park Grove Bowl

YEL Fencing

Experience YEL's Teach It, Practice It, Play It® approach while learning fencing skills, practice in games, and compete in matches. *All equipment provided.*



Grades 2-5

YE2424 7 sessions \$114
6:15-7:15 p.m. Tue Jan. 14-Mar. 4
District Program Center

Grades 6-12

YE2325 7 sessions \$149
7:20-8:50 p.m. Tue Jan. 14-Mar. 4
District Program Center

Serenity Farm Horse Camp

Discover the basics of horse care, grooming, and riding. Equipment and supplies will be provided.



Age 6-12

YE2526 1 session \$125
9 a.m.-2 p.m. Thu Jan. 20
Serenity Farm

Conquer Ninja Rec Team

Develop confidence, strength, endurance, balance, and friendships with a fun, unique sport! Includes 6 practices and 2 competitions.

Age 6-13

YE2268 8 sessions \$199
9-10 a.m. Sun Jan. 5-Feb. 23
Conquer Ninja Gym

YE2272 8 sessions \$199
9-10 a.m. Sun Mar. 2-Apr. 20
Conquer Ninja Gym

Age 6-9

YE2265 8 sessions \$199
4-5 p.m. Fri Jan. 10-Feb. 28
Conquer Ninja Gym

YE2266 8 sessions \$199
5:15-6:15 p.m. Fri Jan. 10-Feb. 28
Conquer Ninja Gym

YE2269 8 sessions \$199
4-5 p.m. Fri Mar. 7-Apr. 25
Conquer Ninja Gym

YE2270 8 sessions \$199
5:15-6:15 p.m. Fri Mar. 7-Apr. 25
Conquer Ninja Gym

Age 8-13

YE2267 8 sessions \$199
6:30-7:30 p.m. Fri Jan. 10-Feb. 28
Conquer Ninja Gym

YE2271 8 sessions \$199
6:30-7:30 p.m. Fri Mar. 7-Apr. 25
Conquer Ninja Gym

Paid Advertisement

Gateway to Miracles A CAMPAIGN TO SHADE OUR PLAYERS



Help us raise \$75,000 to improve the Woodbury Rotary Miracle Field at Jeff Hanson Memorial Ballpark.

Visit www.woodburyrotaryCF.org for details. We would like a shade structure and wheelchair-friendly picnic tables in place for the 2026 playing season.

The Woodbury Rotary Club thanks you!

www.woodburymnrotary.org



RECREATION

Intro to Ninja

Develop strength, flexibility, problem-solving and coordination while learning how to master all obstacles!



Age 5-13

YE2258 8 sessions \$190
4-5 p.m. Wed Jan. 8-Feb. 26
Conquer Ninja Gym

YE2259 8 sessions \$190
5-6 p.m. Wed Jan. 8-Feb. 26
Conquer Ninja Gym

YE2261 8 sessions \$190
6:30-7:30 p.m. Wed Jan. 8-Feb. 26
Conquer Ninja Gym

YE2262 8 sessions \$190
4-5 p.m. Wed Mar. 5-Apr. 23
Conquer Ninja Gym

YE2263 8 sessions \$190
5-6 p.m. Wed Mar. 5-Apr. 23
Conquer Ninja Gym

YE2264 8 sessions \$190
6:30-7:30 p.m. Wed Mar. 5-Apr. 23
Conquer Ninja Gym

Parent Child Ninja Class

Work together to tackle ninja obstacles and problem-solve courses while building self-esteem!

Age 5+ with an adult

YE2256 8 sessions
9-10 a.m. Sat Jan. 4-Feb. 22
Parent + 1 child...\$275
Additional child.....\$75

YE2257 8 sessions
9-10 a.m. Sat Mar. 1-Apr. 19
Parent + 1 child...\$275
Additional child.....\$75

Parents Day Out

No School? No Problem! Sign up for 2 hours of activities and fun, including 40+ obstacles and a warped wall challenge.

Age 5-13

YE2248 1 session \$40
9-11 a.m. Mon Jan. 20
Conquer Ninja Gym

YE2247 1 session \$40
1-3 p.m. Mon Jan. 20
Conquer Ninja Gym

YE2249 1 session \$40
9-11 a.m. Mon Feb. 17
Conquer Ninja Gym

YE2253 1 session \$40
1-3 p.m. Mon Feb. 17
Conquer Ninja Gym

GYMNASTICS

It is our goal to teach in a positive, fun and safe environment. We strive to develop self-esteem and physical fitness. Our program is suited for recreational, developmental and competitive gymnasts.

We offer year-round evening and weekend classes for girls and boys ages 18 months-18 years old at East Ridge, Park and Woodbury high schools.



Register at
sowashco.ce.eleyo.com



Park Gymnastics

Park High School Gymnastics Center

8040 80th Street South, Cottage Grove, MN 55016

For questions, contact **Coach Kristy Clarke**
cottagegrovegymnastics@gmail.com



East Ridge Gymnastics

East Ridge High School Gymnastics Center

4200 Pioneer Drive, Woodbury, MN 55129

For questions, contact **Coach Caroline Uργο**
curgo0@sowashco.org



Woodbury Gymnastics

Woodbury High School Gymnastics Center

2665 Woodlane Drive, Woodbury, MN 55125

For questions, contact **Coach Julie Remackel**
julie@jogymnastics.com

More Information

For gymnastics schedules, course information, registration dates and policies visit our website at commed.sowashco.org/gymnastics.

Financial Assistance

Visit page 34 to learn about financial assistance.

CREATE



Cake Decorating

Learn to decorate with frosting, gum paste and food coloring, play fun games and win prizes while decorating a delicious 6" cake to enjoy at home.

Winter Theme, Age 8-18

YE268 1 session \$82
10 a.m.-12:30 p.m. Sat Jan. 25
East Ridge High School

Mermaid Theme, Age 8-18

YE269 1 session \$82
10 a.m.-12:30 p.m. Sat Feb. 22
East Ridge High School

Rainbow Theme, Age 8-18

YE270 1 session \$82
10 a.m.-12:30 p.m. Sat Mar. 22
East Ridge High School

Watercolor Bookmarks

Learn the beautiful art of watercolor painting while creating five unique bookmarks.



Grade 5-8

YE2051 1 session \$25
5:30-7:30 p.m. Wed Feb. 19
East Ridge High School



Pottery Sampler

Learn hand-building techniques to make a vase, bowl, animal creatures and more. Create and glaze objects during both sessions.

Grade 2-5

YE2047 2 sessions \$45
3:55-4:55 p.m. Mon Feb. 24-Mar. 3
Valley Crossing Elementary

YE2046 2 sessions \$45
3:55-4:55 p.m. Mon Mar. 24-Mar. 31
Liberty Ridge Elementary

Art Memes (formerly Super Artist)

Master the art of exaggeration and facial expressions, bring to life cuddly polar bears and craft hilarious stories through sequential art. Nurture your creativity and storytelling skills.



Grade K-5

YE2501 6 sessions \$83
3:15-4:15 p.m. Mon Jan. 6-Feb. 24
Hillside Elementary

YE2508 6 sessions \$83
2:30-3:30 p.m. Fri Jan. 17-Feb. 28
Royal Oaks Elementary

YE2507 4 sessions \$55
3:15-4:15 p.m. Thu Jan. 23-Feb. 13
Cottage Grove Elementary

YE2503 5 sessions \$69
3:15-4:15 p.m. Tue Jan. 28-Feb. 25
Grey Cloud Elementary

YE2504 5 sessions \$69
3:50-4:50 p.m. Tue Jan. 28-Feb. 25
Valley Crossing Elementary

YE2505 6 sessions \$83
3:15-4:15 p.m. Wed Jan. 29-Mar. 5
Middleton Elementary

YE2506 6 sessions \$83
3:50-4:50 p.m. Wed Jan. 29-Mar. 5
Red Rock Elementary

YE2502 5 sessions \$69
3:15-4:15 p.m. Thu Jan. 30-Mar. 6
Pine Hill Elementary

Toon Time

Learn cartooning basics like features, characteristics, exaggeration, action and personification to create your own original cartoon characters.



Grade K-5

YE2136 2 sessions \$80
9 a.m.-12 p.m. Mon Mar. 17-Apr. 21
District Program Center

Adult/Child Paint Date: Let's Hop

Explore your creative side together. Get step-by-step guidance on painting techniques to create a cohesive and beautiful painting on two 12" x 16" canvases.



Age 9 and up

YE2052 1 session \$57
5:30-7:30 p.m. Thu Apr. 24
East Ridge High School

Art Masters

Create art inspired by iconic works like Edvard Munch's The Scream, Pablo Picasso's Woman in Hat, Vincent Van Gogh's Chair, Wassily Kandinsky's Bavarian Market Square and Claude Monet's Regatta at Argenteuil.

Grade 3-6

YE2512 4 sessions \$57
6:30-7:30 p.m. Tue Jan. 21-Feb. 11
East Ridge High School

YE2511 4 sessions \$57
6:30-7:30 p.m. Thu Jan. 23-Feb. 13
East Ridge High School

YE2513 4 sessions \$57
6:30-7:30 p.m. Wed Feb. 5-Feb. 26
Cottage Grove Middle School

Cartoon Comics

Build your own comic. Create short stories with awesome characters and fantastic expressions in every class!

Grade K-5

YE2137 5 sessions \$80
9 a.m.-12 p.m. Mon-Fri Mar. 10-14
District Program Center



Creative Sewing

Learn to sew, including basic sewing techniques, tools, a variety of stitches and practice with a sewing machine. Create new projects each month.

Age 8-12

YE2073 4 sessions \$118
4-6 p.m. Wed Jan. 8-29
Nena's Designs

YE2074 4 sessions \$118
4-6 p.m. Wed Feb. 5-26
Nena's Designs

YE2075 4 sessions \$118
4-6 p.m. Wed Mar. 5-Apr. 2
Nena's Designs

Intensive Sewing Camp

Create two projects from scratch while learning basic sewing skills including hand and machine sewing techniques. All materials provided.

Grade 4-8

YE21208 1 session \$96
9 a.m.-1 p.m. Fri Feb. 17
Nena's Designs

CREATE



Mini-Messes **NEW**

Join us for taste-safe sensory activities where your little ones can explore and play while new parents connect and engage in a fun, messy environment!

Child must be able to sit on their own.

Age 6 months-2 years

YE2094 3 sessions \$54
9:30-10:15 a.m. Mon Jan. 6-27
The Little Village

YE2095 3 sessions \$54
9:30-10:15 a.m. Mon Feb. 3-24
The Little Village

Messy Artists **NEW**

Let's make mess-terpieces! Enjoy hands-on activities that boost creativity and imagination, focusing on the fun of the process, not the final product!

Cost includes open play before/after class.



Age 18 months-6 years

YE2089 3 sessions \$54
10:30-11:30 a.m. Mon Jan. 6-27
The Little Village

YE2090 3 sessions \$54
10:30-11:30 a.m. Mon Feb. 03-24
The Little Village

Playdough Sensory Kit Workshop- Winter Wonderland **NEW**

In this hands-on workshop, kids will make and color playdough, add whimsical accessories, and create a sensory kit with glitter dough, storage containers, and more!

Cost includes two kits (make one in class and one at home) and open play before/after class.



Age 3-6

YE2096 1 session \$24
10-11 a.m. Sat Jan. 4
The Little Village

YE2091 1 session \$24
10-11 a.m. Thu Jan. 9
The Little Village

PERFORMING ARTS



Pourquoi Stories

Explore how cultures use storytelling to explain the mysteries of life, from why the stars shine to how animals got their traits. Enjoy fun theater activities, learn acting skills, and create your own stories.

Grade 2-5

YE2119 5 sessions \$120
4:30-6 p.m. Tue Jan. 14-Feb. 11
East Ridge High School

IMPROV: Acting without a Script

Come join the fun! Play exciting improv games, learn theater basics, and boost your communication skills, confidence, and creativity while working together in a supportive, playful environment!



Grade 3-5

YE2321 8 sessions \$135
3:50-4:50 p.m. Wed Jan. 15-Mar. 5
Valley Crossing Elementary

YE2323 7 sessions \$118
3:50-4:50 p.m. Thu Jan. 16-Mar. 6
Liberty Ridge Elementary

Grade 6-9

YE2322 7 sessions \$148
6-7:15 p.m. Tue Jan. 14-Mar. 4
East Ridge High School

Improv with Locally Grown Theatre

Say "Yes, And!" to a world of creativity and fun! Create characters, build stories, and make bold choices—all without a script. Boost confidence and sharpen quick-thinking skills!

Grade 6-12

YE2120 5 sessions \$120
4:30-6 p.m. Wed Jan. 15-Feb. 19
Cottage Grove Middle School

When I Grow Up

Dive into the world of character-building, storytelling, and collaboration. Get inspired to think big and imagine your future self in any role!

Age 4-7

YE2118 5 sessions \$120
4:30-6 p.m. Thu Jan. 16-Feb. 13
East Ridge High School

After School Theater Class with Character Kids

Calling all new and returning students! Learn acting, singing, and musical theater dance while playing theater games, mastering stage skills, and performing a song or scene from a Broadway musical.



Grade 1-5

YE2651 10 sessions \$163
2:30-3:30 p.m. Mon Feb. 3-May 5
Royal Oaks Elementary

YE2652 10 sessions \$163
4-5 p.m. Mon Feb. 3-May 5
Bailey Elementary

YE2653 10 sessions \$163
6-7 p.m. Mon Feb. 3-May 5
East Ridge High School



Locally Grown Theatre's Annual Spring Break Cabaret

Become a triple threat in singing, dancing, and acting! Learn vocal techniques, choreography, and character development, then showcase your talents in a live performance for family and friends!

Grade 6-12

YE2129 6 sessions \$200
9 a.m.-4 p.m. Mon-Sat Mar. 10-15
Oltman Middle School

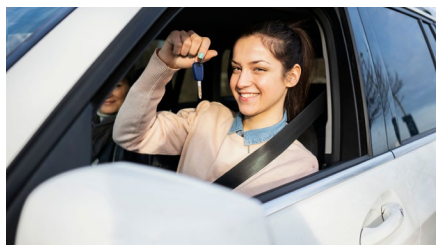
Winnie The Pooh with Locally Grown Theatre

Join Winnie-the-Pooh and friends in the "100 Acre Wood" for a fun celebration with balloons, Heffalumps, and a birthday cheer. Then share the laughter and joy from this magical adventure in a performance for family and friends!

Grade 1-5

YE2130 6 sessions \$200
9 a.m.-4 p.m. Mon-Sat Mar. 10-15
Oltman Middle School

SKILLS AND DEVELOPMENT



Driver Education

Prepare to take the Minnesota permit test. Safeway Driving School provides 30 hours of classroom structured into 10 lessons. After completing class, students who are 15 years old are eligible to take the permit test at any Minnesota exam center.

Behind-the-wheel instruction includes three, two-hour private lessons for a total of six hours of instruction in a Safeway car on city streets, highways and freeways with a responsible, licensed Safeway instructor.

East Ridge High School, Age 14.5-18

DE21001	10 sessions	\$439
3:20-6:20 p.m.	Mon-Thu	Jan. 14-30
DE21002	10 sessions	\$439
3:20-6:20 p.m.	Mon-Thu	Feb. 10-26
DE21003	10 sessions	\$439
3:20-6:20 p.m.	Mon-Thu	Mar. 18-Apr. 3

Park High School, Age 14.5-18

DE23001	10 sessions	\$439
3:30-6:30 p.m.	Mon-Thu	Jan. 14-Feb. 3
DE23002	10 sessions	\$439
3:30-6:30 p.m.	Mon-Thu	Feb. 10-26
DE23003	10 sessions	\$439
3:30-6:30 p.m.	Mon-Thu	Mar. 18-Apr. 2
DE24003	10 sessions	\$439
3:20-6:20 p.m.	Mon-Thu	Mar. 18-Apr. 3

Woodbury High School, Age 14.5-18

DE24001	10 sessions	\$439
3:20-6:20 p.m.	Mon-Thu	Jan. 14-Feb. 3
DE24002	10 sessions	\$439
3:20-6:20 p.m.	Mon-Thu	Feb. 10-26

Distance Learning, Age 14.5-18

ONLINE

Class is conducted through a secure Zoom platform. Safeway will email the classroom handouts and the MN Driver's Manual in PDF format. The curriculum should be printed and available for use during class.

DE449001	10 Sessions	\$439
4-7 p.m.	Mon-Thu	Sept. 16-Oct. 1
DE449002	10 Sessions	\$439
4-7 p.m.	Mon-Thu	Oct. 28-Nov. 12

Advantage ACT Prep Course

Improve test-taking skills and overall ACT scores. Including an introduction to ACT format, subject area instruction, test strategies, overcoming test anxiety and time management.



East Ridge High School, Grade 9-12

YE26437	4 sessions	\$180
6-9 p.m.	Mon	Mar. 24-Apr. 14

Park High School, Grade 9-12

YE26438	4 sessions	\$180
6-9 p.m.	Wed	Mar. 19-Apr. 9

Woodbury High School, Grade 9-12

YE26402	4 sessions	\$180
6-9 p.m.	Thu	Jan. 16-Feb. 6
YE26439	4 sessions	\$180
6-9 p.m.	Thu	Mar. 20-Apr. 10
YE26435	4 sessions	\$180
8:30-11:30 a.m.	Sat	Mar. 22-Apr. 12
YE26436	4 sessions	\$180
12-3 p.m.	Sat	Mar. 22-Apr. 12

Virtual, Grade 9-12 ONLINE

Instructors teach and answer questions live via citrural classroom.

YE26929	4 sessions	\$180
9 a.m.-12 p.m.	Sat	Jan. 25-Feb. 22
YE26930	4 sessions	\$180
9 a.m.-12 p.m.	Sat	Mar. 8-29

Intensive Etiquette Camp

Learn manners and etiquette with a fun, hands-on approach, including proper behavior at the table and in public, conversation skills and public speaking. Lunch demo on the last day.

Age 8-12

YE2370	1 session	\$84
2-5 p.m.	Mon	Feb. 17

Nena's Designs

Futura: Where Spanish Comes Alive!

Spark enthusiasm for Spanish with an animal-themed adventure! Learn new vocabulary, conversation skills, and culture while exploring various animal habitats in a fun, interactive class.

Grade K-5

YE2083	8 sessions	\$145
3:50-4:50 p.m.	Mon	Feb. 3-Apr. 14.

Valley Crossing Elementary

YE2080	8 sessions	\$145
3:50-4:50 p.m.	Tue	Feb. 4-Apr. 8

Liberty Ridge Elementary

YE2081	8 sessions	\$145
3:50-4:50 p.m.	Tue	Feb. 4-Apr. 8

Red Rock Elementary

YE2079	8 sessions	\$145
3:50-4:50 p.m.	Wed	Feb. 5-Apr. 2

Bailey Elementary

YE2082	8 sessions	\$145
2:30-3:30 p.m.	Wed	Feb. 5-Apr. 9

Royal Oaks Elementary

Babysitting for Boys and Girls

Age 10.5+

Learn leadership, safety, basic care, the business of babysitting, and first aid for breathing and bleeding emergencies from a certified instructor.

Students must attend all 6 hours of class.

Visit sowashco.ce.eleyo.com for class times, dates and locations.

Ready To Be Home Alone

Age 7.5+

Learn CPR/First aid, how to handle home and medical emergencies and address problems the unexpected situations from a Red Cross instructor. Get a home safety checklist and what your parents expect checklist.

Visit sowashco.ce.eleyo.com for class times, dates and locations.

Paid Advertisement



Girl Scouts.

gsrv.gs/join



FIND YOUR Friends



girl scouts
river valleys

Register Online at sowashco.ce.eleyo.com | Winter 2025

MUSIC



30-minute Private Music Lessons

One-on-one instruction with an experienced musician. Register for the 30-minute time slot that best fits your schedule.

String, piano, voice, etc. with Michelle Dunkirk ONLINE - Age 9.5+

30 minutes 10 sessions \$380
3-8 p.m. Tue Jan. 7-Mar. 25

30 minutes 11 sessions \$420
3-8 p.m. Wed Jan. 8-Mar. 26

Guitar or banjo with

George McCorkell - Grade 4-12

30 minutes 10 session \$310
4-7 p.m. Tue Jan. 14-Mar. 25
East Ridge High School

Brass Instrument Lessons with Todd Schendel - Age 8.5+

30 minutes 7 sessions \$350
3-5 p.m. Tue Oct. 22-Dec. 17
Woodbury Middle School

Miss Laura's A Little Music In Me

Enjoy music together through songs, games, and fun activities with winter, Valentine, and St. Patrick's themes. Includes a free superhero cape t-shirt!



Children must be accompanied by a caregiver.

Ages 1 (walking)-5

YE2782 10 sessions \$164
9-9:45 a.m. Thu Jan. 16-Mar. 27
All Saints Lutheran

YE2787 10 sessions \$164
10-10:45 a.m. Thu Jan. 16-Mar. 27
All Saints Lutheran

STEM

Chess Club

Join chess club to meet fellow players and improve your skills! Beginner and intermediate players will play weekly and learn the rules, strategies, and how to resolve game disagreements.



Grade 3-5

YE2097 13 sessions Free
2:30-3:30 p.m. Mon Jan. 13-May 12
Newport Elementary

Grade 1-5

YE2066 13 sessions \$137
3:15-4:15 p.m. Mon Jan. 13-May 12
Middleton Elementary

YE2067 13 sessions \$137
3:50-4:50 p.m. Mon Jan. 13-May 12
Nuevas Fronteras Spanish Immersion

YE2063 17 sessions \$179
3:10-4:10 p.m. Tue Jan. 14-May 13
Cottage Grove Elementary

YE2068 16 sessions \$168
3:15-4:15 p.m. Tue Jan. 14-May 13
Pine Hill Elementary

YE2070 16 sessions \$168
3:15-4:15 p.m. Tue Jan. 14-May 13
Woodbury Elementary

YE2071 15 sessions \$158
3:15-4:15 p.m. Wed Jan. 15-May 14
Armstrong Elementary

YE2065 17 sessions \$179
3:50-4:50 p.m. Wed Jan. 15-May 14
Liberty Ridge Elementary

YE2260 16 sessions \$168
2:30-3:30 p.m. Thu Jan. 16-May 15
Royal Oaks Elementary

YE2064 15 sessions \$158
3:15-4:15 p.m. Fri Jan. 17-May 16
Hillside Elementary

YE2069 15 sessions \$158
3:50-4:50 p.m. Fri Jan. 17-May 16
Valley Crossing Elementary

YE2062 14 sessions \$147
3:50-4:50 p.m. Fri Jan. 17-May 16
Bailey Elementary

Online Competition Chess Club ONLINE

Challenge yourself! Improve your tactical skills through instruction and compete against other players.

Players can join optional in-person tournaments. Fees are not included.

Grade 1-12

YE2088 15 sessions \$101
8-9:30 a.m. Sat Jan. 18-May 17

District Chess Tournament

Whether you're in chess club or not, this fun tournament is a great experience for players in grades 1-12. Supervision will be provided. Visit sowashco.ce.eleyo.com for details.

Grade 1-12

YE2078 1 session \$28
9 a.m.-12:30 p.m. Fri Feb. 14
District Program Center

YEL Grandmasters of Chess

New and returning students will learn advanced beginner and intermediate concepts with 60+ lessons, thousands of puzzles, guided games, and in-class tournaments.

For new and returning students. Includes ChessKid.com membership for the session.

Grade K-5

YE2426 8 sessions \$133
3:55-4:55 p.m. Fri Jan. 10-Mar. 7
Nuevas Fronteras Spanish Immersion

YE2427 7 sessions \$116
3:50-4:50 p.m. Thu Jan. 16-Mar. 6
Valley Crossing Elementary

YE2428 7 sessions \$116
3:50-4:50 p.m. Thu Jan. 16-Mar. 6
Red Rock Elementary

Stock Market, Personal Finance & Business Club

ONLINE

Take control of your future by learning about the stock market through real-time data and a simulator. Create investment portfolios, track assets, and explore personal finance!

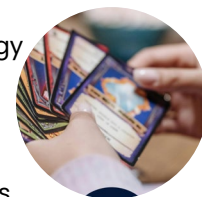


Grade 6-12

YE2714 17 sessions \$134
6:45-7:30 p.m. Thu Jan. 16-May 15

Strategy Game Club

Elevate your strategy gaming! Play popular games like Catan and Pandemic while developing analysis, problem-solving, communication, and negotiation skills. Learn at least three new games!



Grade 6-12

YE2710 8 sessions \$136
6:30-8 p.m. Wed Jan. 15-Mar. 5
East Ridge High School

YE2711 9 sessions \$153
6:30-8 p.m. Wed Mar. 19-May 14
East Ridge High School

Dungeons & Dragons 101 with Character Creation

ONLINE 

Experience the magic of Dungeons and Dragons! Learn the basics, create your character, and develop problem-solving, teamwork, and creative thinking skills in an exciting role-playing adventure.



Grade 1-5

YE2014 2 sessions \$60
8-9:30 a.m. Sat Jan. 11-18

Grade 3-6

YE2029 2 sessions \$80
10:30 a.m.-12:30 p.m. Sat Feb. 8-15

Dungeons & Dragons 101:

One Shot Campaign **ONLINE** 

Join an epic D&D adventure! This roleplaying game helps kids develop math, storytelling, and collaboration skills while working in small groups.

Grade 2-6

YE2041 2 sessions \$60
6-7:30 p.m. Tue Mar 18-25

Dungeons & Dragons 101:

One Shot Minecraft **ONLINE** 

Learn the basics of Dungeon and Dragons. Pick and develop your character and join us for a Minecraft one shot campaign.

Grade 3-6

YE2021 1 session \$60
9 a.m.-12 p.m. Sat Jan. 25

Grade 2-5

YE2032 2 sessions \$60
6-7:30 p.m. Thu Feb. 20-27

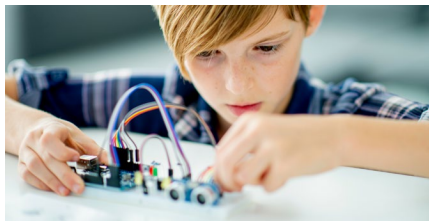


Twist, Turn, Solve: Master the Rubik's Cube!

Learn basic steps or become a speedcuber! Explore puzzles, compete, create mosaics, assemble a custom cube, build a Cube Solving robot and use electronic cubes.

Grades 1-5

YE2092 6 sessions \$105
3:50-4:50 p.m. Thu Jan. 23-Mar. 6
Valley Crossing Elementary



Super Science Season 2

Get hands-on! Create your own robotic hand! Explore robotics, floating balls, slime-making, circuits, codes, the rock cycle, and forensic science while inventing a flying machine!

Grade 2-5

YE2058 7 sessions \$97
3:50-4:50 p.m. Tue Jan. 14-Feb. 25
Liberty Ridge Elementary

YE2057 7 sessions \$97
3:15-4:15 p.m. Fri Jan. 17-Mar. 7
Middleton Elementary

YE2048 7 sessions \$97
6:30-7:30 p.m. Wed Jan. 22-Mar. 5
East Ridge High School



Electro Engineering - Young Engineers STEAM Program

Build six motorized models, including a mixer and laundry machine, while learning about gravity and renewable energy.

Grade 1-5

YE2053 6 sessions \$125
3:50-5:20 p.m. Mon Jan. 13-Mar. 3
Red Rock Elementary

YE2056 6 sessions \$125
3:50-5:20 p.m. Tue Jan. 21-Feb. 25
Nuevas Fronteras Spanish Immersion

YE2054 6 sessions \$125
3:50-5:20 p.m. Wed Jan. 22-Feb. 26
Valley Crossing Elementary

YE2055 6 sessions \$125
3:50-5:20 p.m. Thu Jan. 23-Mar. 6
Liberty Ridge Elementary

Paid Advertisement

All BOYS and GIRLS grades K-5 are invited to join

CUB SCOUTS



Scan to
JOIN TODAY!



What is Cub Scouts all about?

Outdoor adventures, camping,
family outings, games with friends,
and character development

Scholarships available. No child will be turned away due to inability to pay.

Learn more at [GoScouting.org](https://www.goscouting.org)



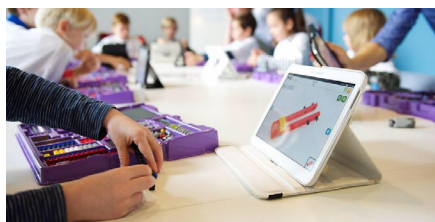
NORTHERN STAR SCOUTING



Computer required (Windows or MacBook), program will not work on Chromebook, tablets or phones. See online course description for additional requirements.

Register Online at sowashco.ce.eleyo.com | Winter 2025

STEM



Robotics & STEM - Young Engineers

Explore new Robotics and STEM concepts and apply them by creating functional robots and machines in each class, independently or in pairs.

MegaMatic Machines, Grade 1-6

Explore elastic energy, link mechanisms, and the cantilever principle while building a road roller, construction crane, brick launcher, and garbage truck

YE2059 4 sessions \$100
6:30-8 p.m. Thu Jan. 16-Feb. 6
East Ridge High School

RoboWild Animals, Grade 1-5

Learn about angular momentum, inertia, friction and gravity while building a Fox, Monkey, Wolf, Horse and more.

YE2060 4 sessions \$100
6:30-8 p.m. Thu Feb. 13-Mar. 6
East Ridge High School

ThrillFusion Machines, Grade 1-5

Discover centrifugal force, momentum and the cantilever principle while building an Alibaba ride, flexi ride, seesaw ride and more.

YE2061 4 sessions \$100
6:30-8 p.m. Thu Mar. 20-Apr. 10
East Ridge High School

3D Printing ONLINE

Learn CAD modeling and 3D design. Designs will be printed and mailed home.

Dungeon & Dragon Die Design, Grade 3-7

Design a custom D&D D4 (4-Sided) and D10 (10-Sided).

YE2011 2 sessions \$75
6-7:30 p.m. Tue Jan. 7-14

Pokemon Grade 3-7

Design your own 3D pocket monster.

YE2019 1 session \$56
6-8 p.m. Thu Jan. 23

Harry Potter Grade 2-5

Create a Deathly Hallow model, and magical pendant.

YE2037 1 session \$56
9-11 a.m. Sat Mar. 8

Minecraft Creations, Grade 3-7

Design a custom Minecraft tool.

YE2039 1 session \$56
6-8 p.m. Wed Mar. 12



Computer required (Windows or MacBook), program will not work on Chromebook, tablets or phones. See online course description for additional requirements.

Elementary Tinker & Print 3D Design Studio

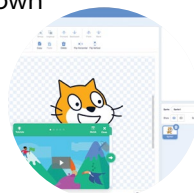
Design and print 3D objects using CAD software and 3D printers. Learn measurement, units, and scale while creating and printing prototypes of functional and original designs.

Grade 3-5

YE2713 9 sessions \$95
6:30-7:30 p.m. Tue Mar. 18-May 13
East Ridge High School

Elementary Scratch Coding

Learn to code your own games in Scratch. Learn foundational programming skills, and share your creations with friends and family.



Grade 3-5

YE2712 8 sessions \$84
6:30-7:30 p.m. Tue Jan. 14-Mar. 4
East Ridge High School

Penguin Corps Linux Club NEW

The Penguin Corps is a tech club for kids to learn Linux and Open Source software. They'll tinker with hardware, explore Free software, and discover how to revive old computers.

Grade 6-8

YE2103 6 sessions \$72
2:30-3:30 p.m. Fri Jan. 10-Feb. 28
Oltman Middle School

YE2101 6 sessions \$72
2:30-3:30 p.m. Mon Jan. 13-Mar. 3
Woodbury Middle School

YE2102 6 sessions \$72
2:30-3:30 p.m. Thu Jan. 23-Mar. 6
Cottage Grove Middle School

Intro to Java Coding ONLINE

Learn the basics of Java and how to organize code using objects while creating your own text-based role-playing game. No programming experience needed.

Grade 4-8

YE2017 2 sessions \$56
6-7:30 p.m. Tue Jan. 21-28

Intro to Video Game Design with Nintendo Characters ONLINE

Create your own video game with your own storyline and popular Nintendo characters as your stars. Add challenges and difficulty levels.

Grade 1-4

YE2030 1 session \$37
6-8 p.m. Tue Feb. 18

Game Coding ONLINE

Learn programming fundamentals and coding skills by creating your own interactive games with Scratch, a coding platform developed by MIT.



Nintendo Characters, Grade 2-4

Create a Nintendo-themed game that brings your favorite characters to life.

YE2020 1 session \$31
6-7:30 p.m. Wed Jan. 29

YE2045 1 session \$31
6-7:30 p.m. Thu Mar. 27

Pokémon, Grade 3-6

Create an interactive 2D video game featuring your favorite Pokémon characters.

YE2027 2 sessions \$56
6-7:30 p.m. Thu Feb. 6-13

Super Mario, Grade 3-7

Design a Mario Kart-style game, customizing characters and tracks for a personalized gaming experience.

YE2025 2 sessions \$75
6-8 p.m. Tue Feb. 4-11

Game Coding, Grade 1-4

Don't just play games—create them! Learn to modify arcade-style games

YE2035 1 session \$31
6-7:30 p.m. Wed Mar. 5

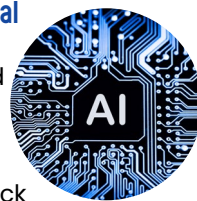
Mario Kart, Grade 3-6

Create your own Mario Kart-style game, picking characters and tracks for your very own racing adventure!

YE2038 1 session \$37
6-8 p.m. Tue Mar. 11

Extreme Coding: Artificial Intelligence ONLINE

Dive into augmented reality, artificial intelligence and machine learning. Create a chatbot, Rock Paper Scissors game, and more.



Grade 3-6

YE2033 1 session \$37
9-11 a.m. Sat Mar. 1

Virtual Reality Coding ONLINE

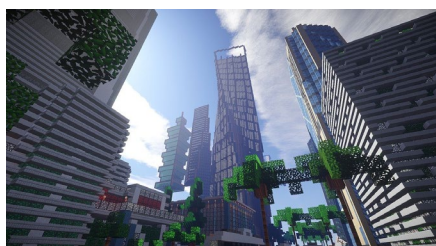
Create 3D virtual reality environments and characters using CoSpaces to design your own games and VR projects. Viewable on mobile phones and VR systems.

Grade 3-7

YE2031 2 sessions \$75
6-8 p.m. Wed Feb. 19

Grade 1-5

YE2042 2 sessions \$56
6-7:30 p.m. Wed Mar. 19



Multiplayer Minecraft ONLINE

Team up with others in Minecraft.

Theme Park Builder, Grade 1-5

Create a custom theme park with rides and attractions!

YE2013 1 session \$37
6-8 p.m. Thu Jan. 9

Map Builder, Grade 1-5

Create a custom multiplayer adventure map featuring monster spawners, hidden armor and more.

YE2016 1 session \$37
6-8 p.m. Thu Jan. 16

Master Builders, Grade 1-5

Learn building techniques and complete challenges.

YE2022 1 session \$37
6-8 p.m. Thu Jan. 30

Survival Challenge, Grade 2-6

Explore, overcome challenges and complete quests.

YE2023 1 session \$31
8-9:30 a.m. Sat Feb. 1

City Builder, Grade 1-6

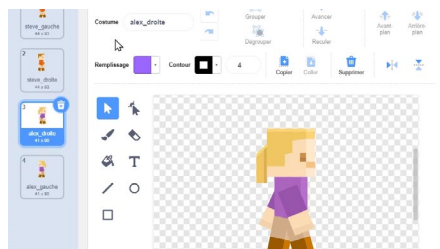
Collaborate to construct a city!

YE2034 2 sessions \$56
6-7:30 p.m. Tue Feb. 25-Mar. 4

Block Hunter, Grade 1-5

Find hidden blocks and animals. Get ideas to create your own mini-game.

YE2040 1 session \$37
8-10 a.m. Sat Mar. 15

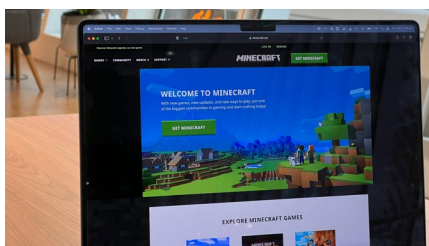


Minecraft with Scratch ONLINE

Create an interactive 2D video game with Minecraft characters using Scratch, a coding platform developed by MIT.

Grade 2-4

YE2028 2 sessions \$56
8-9:30 a.m. Sat Feb 8-15



Minecraft Mod Development ONLINE

Dig deeper into Minecraft. Create custom mods and learn programming concepts using MCreator.

Custom Tool, Grade 2-6

Learn how to make mods to create a custom tool.

YE2010 1 session \$31
10-11:30 a.m. Sat Jan. 4

Biomes Grade 2-6

Dig deeper into Minecraft modding to develop a new biome.

YE2018 1 session \$37
6-8 p.m. Wed Jan. 22

YE2024 1 session \$37
10:30 am-12:30 pm Sat Feb. 1

Video Production

Explore the world of digital media by learning video editing, special effects and content creation. Enhance your storytelling and production skills.



Special Effects, Gradwe 3-6

Learn Hollywood-style special effects techniques and film editing basics to create magical videos.

YE2012 2 sessions \$56
6-7:30 p.m. Wed Jan. 8-15

YouTub Shorts, IG Reels & TikTok, Grade 2-6

Create video shorts for TikTok, YouTube, and Instagram by learning editing, motion graphics, and storytelling techniques.

YE2026 2 sessions \$56
6-7:30 p.m. Wed Feb. 5-12

Podcasting, Grade 3-8:

Produce your own podcast by exploring ideas, scripting, and refining audio using Audacity.

YE2036 2 sessions \$56
6-7:30 p.m. Thu Mar. 6-13

Top List Creator, Grade 1-5

Learn pro filmmaker tips to create engaging YouTube content, edit videos, and share them with the world.

YE2044 2 sessions \$56
8-9:30 a.m. Sat Mar. 22-29

Paid Advertisement

4-H

in

Washington County

YOUTH

Free and affordable activities for youth in K - high school!

Gain skills, learn responsibility, serve your community, and have fun all year long!

FAMILIES

Join a 4-H club in your area and have fun as a family!

VOLUNTEERS

Lead a workshop, help with a project, become a county fair judge, and more!

JOIN TODAY!

z.umn.edu/WashingtonCounty

UNIVERSITY OF MINNESOTA

EXTENSION

Advertise with Us!

SoWashCo Community Education provides lifelong learning and enrichment opportunities for all ages. We serve the communities of Afton, Cottage Grove, Denmark, Grey Cloud Island, Newport, St. Paul Park and Woodbury. We produce a catalog three times per year and a summer youth activities brochure.

Contact us:

CommunityEducation@sowashco.org

More information:

commed.sowashco.org/catalogs



SPRING/SUMMER 2025
Reserve your ad
space by Jan. 10, 2025

Ask About Reduced
Rates for Non-Profits

Full Page \$1200 | 2/3 Page \$800
Half Page \$600 | 1/3 Page \$400
1/6 Page \$200

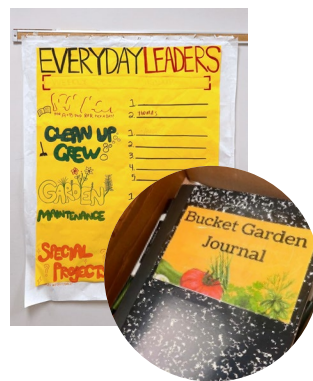
Save 10% when you commit to advertising in three or more consecutive publications.

SoWashCo Community Education reserves the right to refuse any advertisement for any reason, including similar programming and/or services.



Summer Bucket Gardens Teach Kids Club Students Leadership

This summer, third, fourth and fifth-grade students at Cottage Grove Elementary Kids Club served as "Everyday Leaders", student volunteers responsible for helping to clean and reset spaces and set up for events. Our "Everyday Leaders" were also in charge of the Bucket Garden. A hands-on project that taught the students independence, responsibility, leadership, communication, patience, gardening and cooking skills.



In the beginning, just a few older students began the project. Together the group chose which plants to grow, strategically picking plants that could be used together in recipes. They chose salsa ingredients like tomatoes, jalapenos, green onion, and cilantro; pickling plants like cucumbers and dill; and pizza themed ingredients like cherry tomatoes, bell peppers and basil! Quickly other students began to see how fun the process was and joined in.

The garden consisted of 10 buckets on pallets with holes drilled into the bottom for drainage. Maintaining the garden was time consuming and sometimes boring. Each day the students watered, measured, and pruned the plants, recording the process in the garden journal. When their seeds started to sprout, and little buds of peppers started to grow, the excitement was remarkable. After several weeks the students harvested, washed and packaged herbs to take home. The first harvest increased the students' interest in maintaining the garden, helping it to thrive all summer.

On the second to last day, the students harvested as much produce and herbs as possible. Then we made crispy cheese jalapeno bites, caprese bites and garden salsa! The students enjoyed all the food, shared with friends and even tried new things. The "Everyday Leaders" were rewarded with a sense of accomplishment for a job well done and the satisfaction of completing a task.



“Our moms and dads are gonna be so happy because we’re good gardeners!”



Kids Club

School-age Child Care

Kids Club provides high-quality child care to elementary-age students within SoWashCo Schools. Our purpose is to support the healthy growth and development of students through strong relationships and engaging, skill-building experiences.

Key Learning Areas

We provide a weekly curriculum with a variety of theme-based activities. Children are offered options to participate in group and individual activities in eight key learning areas identified by our families, Kids Club staff and school day staff.



- Social Emotional Learning • Art • STEM • Literacy
- Health and Wellness • Physical Activity • Life Skills
- Language and culture



View schedules, fees and registration information at sowashco.org/kidsclub.

For more information, please contact us at 651-425-6639 or kidsclub@sowashco.org

Para más información, visite el sitio web sowashco.org/kidsclub

Space is available now for full or part-time care before and/or after school at most locations.

Fees apply.

Care Options

Before and After School

Before and after school care for elementary students in grades K-5.

- Full or part-time schedules.
- Monday-Friday, 6:30 a.m. until the start of the school day-after school until 6 p.m.
- **Registration for the 2025-26 school year will be held in April.**
- Care on non-school days is available to current Kids Club participants at limited locations. Registration is required for non-school days. **Watch your email closely for important updates!**

Summer

Full day summer care for students who have completed grades K-5.

- Full or part-time schedules.
- Monday-Friday, 6:30 a.m.-6 p.m.
- Held at consolidated locations.
- **Registration for summer 2025 will be held in Feb.**

Registration and daily fees apply.

Discounts and fee assistance are available:

- 5% sibling discount
- 25% Educational Benefit
- Washington County Child Care Assistance Program

CONVENIENT | SAFE | AFFORDABLE

Register Online at sowashco.ce.eleyo.com | Winter 2025

EARLY LEARNING

Early Childhood Family Education (ECFE)

Early Childhood Family Education (ECFE) is a family education program that is only offered through Minnesota school district Community Education programs like SoWashCo Community Education. ECFE's goal is to support and enhance the ability of parents and other caregivers, through community and early school connection, to provide the best possible environment for their child's learning and growth. For more information, call 651-425-7181 or visit commed.sowashco.org/ecfe.

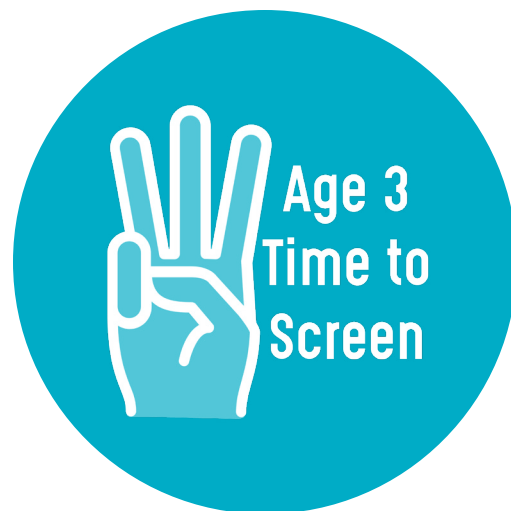
New ECFE classes!

Learn more at
commed.sowashco.org/ecfe



“Thank you so much to all the teachers and staff that made this past school year possible. We feel confident in sending our child to kindergarten knowing he has the base knowledge and skills to succeed in the classroom.”

– Preschool Parent



Early Childhood Screening

Early Childhood Screening is a free and simple check of how your child is growing and developing. Screening is recommended at age 3 and is required by the State of Minnesota for any child entering kindergarten in a public school.

Why screen at age 3?

- Find out how your child is growing and developing
- Have more time to provide support if needed
- Get connected to early education programs and resources
- Take care of it before Kindergarten begins

For further information or to schedule an appointment visit our website sowashco.org/screening.

Have questions on your child's development?

No two children develop, grow and learn in the same way or at the same pace. However, children do develop in certain predictable ways. To review developmental milestones, encourage healthy development, and learn additional resources for your child, visit Help Me Grow at www.helpmegrowmn.org.

help me



If you are in need of enrollment assistance or have questions, please call our early learning office at 651-425-6121.



Preschool

Preschool supports a child's social-emotional growth while also increasing skills in language, literacy and physical development for future success. Preschool offers a great environment where children can create important social connections with their peers.

2025-26 Preschool Registration

Preschool registration will take place Jan. 6-Feb. 7, 2025. Children must be 3 or 4 years old by Sept. 1, 2025 to register. More information will be available soon.

For the latest information, please visit
sowashco.org/early-learning

Families Learning Together

South Washington County Schools (SoWashCo Schools) Early Childhood Family Education (ECFE) is now accepting registrations for the Families Learning Together (FLT), an ECFE Program for Multilingual/Multicultural Families.

Join us for:

- Parent discussion with other parents about child development, culture, American schools and more.
- Fun activities during parent and child interaction time.
- A preschool experience for children ages 2.5 to 5 years.

Child care is provided for enrolled families who have additional children ages birth to 2.5 years.

Limited bussing may be available.

For more information, contact Katie Van Overmeiren at 651-425-7181 or kvanover@sowashco.org

\$0

This class
is FREE!



Home Based Support

Early Childhood Family Education (ECFE) Parent Consultations provide an opportunity for families with children birth to eight years of age, to ask parenting questions or share their concerns with a licensed parent educator. Parent consultations are provided in-person, by telephone, or virtually.

Connect with us today for help with:

- Supporting children's emotional well-being
- Answering developmental questions
- Adjusting to life with a new baby in the home
- Connecting with community resources and much more!

Questions about ECFE Parent Consultations?

Contact our ECFE Outreach Coordinator at 651-425-7163.



DIRECTORY AND DISTRICT MAP

District Locations

Armstrong Elementary (AES)

8855 Inwood Ave. S
Cottage Grove, MN 55016

Bailey Elementary (BES)

4125 Woodlane Drive
Woodbury, MN 55129

Cottage Grove Elementary (CGES)

7447 65th Street S
Cottage Grove, MN 55016

Cottage Grove Middle School (CGMS)

9775 Indian Blvd.
Cottage Grove, MN 55016

Crestview Elementary (CES)

7830 80th Street S
Cottage Grove, MN 55016

District Service Center (DSC)

7362 E. Point Douglas Road S
Cottage Grove, MN 55016

District Program Center (DPC)

8400 E. Point Douglas Road S
Cottage Grove, MN 55016

East Ridge High School (ERHS)

4200 Pioneer Drive
Woodbury, MN 55129

Grey Cloud Elementary (GCES)

9525 Indian Blvd. S
Cottage Grove, MN 55016

Hillside Elementary (HES)

8177 Hillside Trail S
Cottage Grove, MN 55016

Lake Middle School (LMS)

3133 Pioneer Drive
Woodbury, MN 55129

Liberty Ridge Elementary (LRES)

11395 Eagle View Blvd.
Woodbury, MN 55129

Liberty Ridge Site 2 (LR2)

11283 Eagle View Blvd.
Woodbury, MN 55129

Middleton Elementary (MES)

9105 Lake Road
Woodbury, MN 55125

Newport Elementary (NES)

851 6th Ave.
Newport, MN 55125

Nuevas Fronteras Spanish Immersion (NFSI)

1020 Third St.
St. Paul Park, MN 55071

Oltman Middle School (OMS)

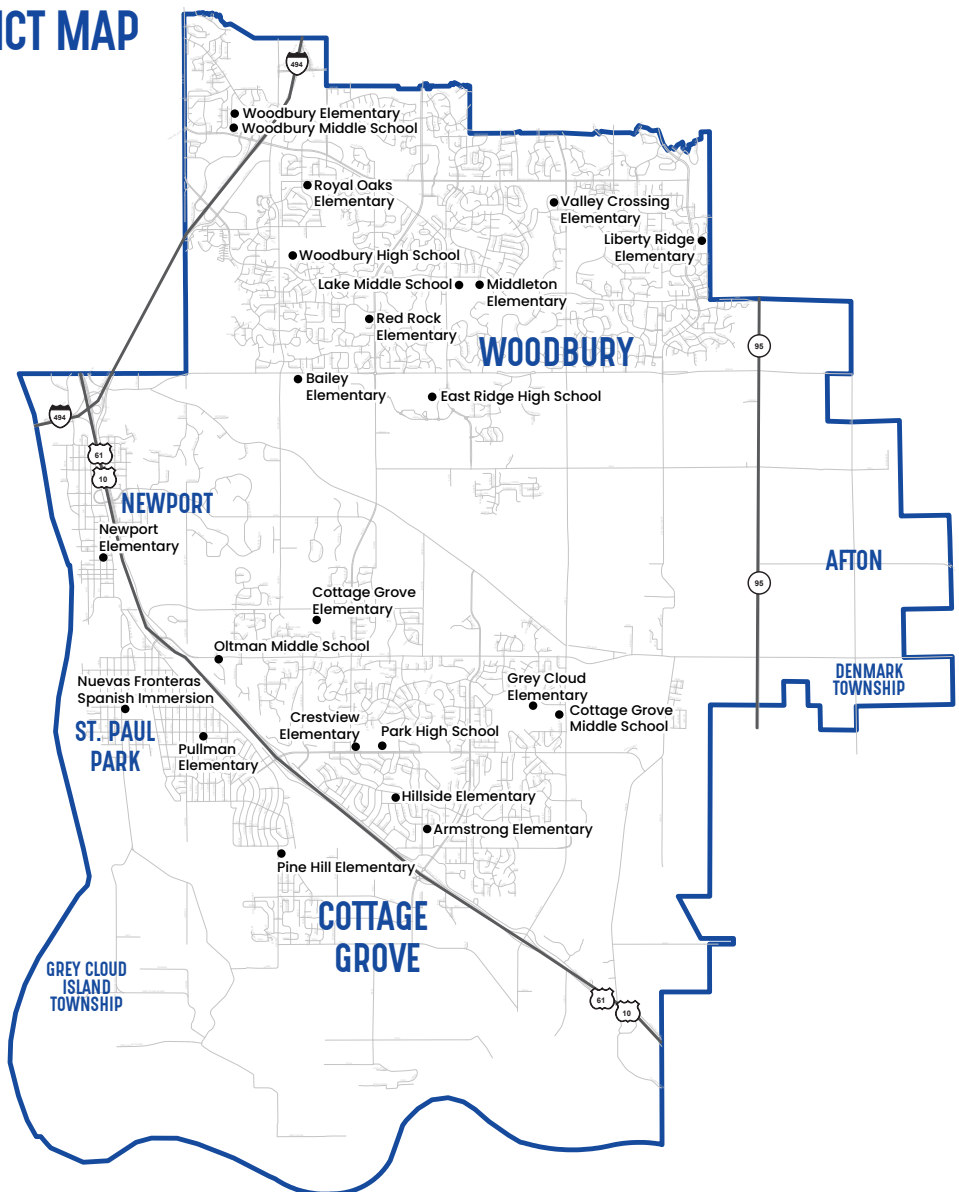
6625 Goodview Ave. S
Cottage Grove, MN 55016

Park High School (PHS)

8040 80th Street S
Cottage Grove, MN 55016

Pine Hill Elementary (PHES)

9015 Hadley Ave. S
Cottage Grove, MN 55016



Pullman Elementary (PES)

1260 Selby Ave.
St. Paul Park, MN 55071

Red Rock Elementary (RRES)

3311 Commonwealth Ave.
Woodbury, MN 55125

Royal Oaks Elementary (ROES)

7335 Steepleview Road
Woodbury, MN 55125

South Washington Alternative High School (SWAHS)

8400 E. Point Douglas Road S
Cottage Grove, MN 55016

Valley Crossing Elementary (VCES)

9900 Park Crossing
Woodbury, MN 55125

Woodbury Elementary (WES)

1251 School Drive
Woodbury, MN 55125

Woodbury High School (WHS)

2665 Woodlane Drive
Woodbury, MN 55125

Woodbury Middle School (WMS)

1425 School Drive
Woodbury, MN 55125

Off-Site Class Locations

All Saints Lutheran

8100 Belden Blvd.
Cottage Grove, MN 55016

Board & Brush Studio

2230 Eagle Creek Lane
Woodbury, MN 55129

Conquer Ninja Gym

707 Commerce Drive, Suite 120
Woodbury, MN 55125

Craig Seath's Pottery Studio

1023 7th Street
Hudson, WI 54016

The Grove Church

8600 90th Street
Cottage Grove, MN 55016

Kidcreate Studio

1785 Radio Drive
Woodbury, MN 55125

Kok Funeral Home

7677 80th Street
Cottage Grove, MN 55016

The Little Village

7750 Harkness Ave S #101
Cottage Grove, MN 55016

Nena's Designs

434 Hale Ave. N, Suite 120
Oakdale, MN 55128

Serenity Horse Farm

11490 Julianne Ave. N
Stillwater, MN 55082

Tilden Community Center

310 River Street
Hastings, MN 55003

Valley Creek Mall

1750 Weir Drive
Woodbury, MN 55125

SoWashCo Registration

COMMUNITY EDUCATION


 **Register online at**
sowashco.ce.eleyo.com


 **Register by mail, fax or in-person**

District Program Center
8400 E Point Douglas Rd. S
Cottage Grove, MN 55016

Hours: Monday-Friday
7:30 a.m.-4 p.m.

Fax: 651-425-6620

 **Drop off** your form in the secure drop box located to the left of the main doors.

 **Questions?**
Call 651-425-6600 or email
communityeducation@sowashco.org

Policies and Procedures

Learn more at commed.sowashco.org

Cancellations and Refunds

Cancellations made at least seven business days before the course start date will be refunded. A processing fee of \$5-\$10 will apply. Procedures for Early Childhood Family Education, Preschool and Kids Club are program-specific. Learn more at commed.sowashco.org/cancellations.

Register early to ensure your space in class and to avoid course changes or cancellation due to low enrollment.

Inclusive Programming

Our programming is designed to be fun, welcoming and inclusive for all. Please let us know two-weeks before the course start date if any accommodations are needed to participate.

Financial Assistance

Families who qualify for Educational Benefits may request fee assistance to reduce the cost of youth activities and classes. Restrictions apply. Learn more at commed.sowashco.org/financial-aid.

UCare is not accepted.

Media Opt-Out

Photos and video may be taken within SoWashCo Community Education programs and activities and may be included in media created by the district or community partners. Media includes, but is not limited to, interviews, photos and videos. If you wish to opt-out, notify us at communityeducation@sowashco.org or 651-425-6600.

Participant's full name _____

Address _____

City _____ **State** _____ **Zip** _____

Phone _____
Home _____ Cell _____ Work _____

Email _____

Please provide an email address to receive program information including course confirmations, schedule updates or course cancellations.

Accommodations ☐ ASL Interpreter ☐ Allergies _____
☐ Wheelchair/Walker ☐ Other _____

Call 651-425-6600 if you or your child require additional assistance or if you have further concerns. Please provide a two-week notice for staff to arrange for assistance.

Emergency Contact A minimum of one guardian/emergency contact is required to register for youth courses or adult trips.

Full name _____ **Phone** _____

Full name _____ **Phone** _____

Youth If the participant is a child, please provide the following information.

Date of birth _____ **Grade** _____

Shirt size or instrument (if applicable) _____

Course Information

Course name _____ **Course fee** _____

Course # _____ **Start date/time** _____ **Discount** _____

Final fee _____

Course name _____ **Course fee** _____

Course # _____ **Start date/time** _____ **Discount** _____

Final fee _____

Course name _____ **Course fee** _____

Course # _____ **Start date/time** _____ **Discount** _____

Final fee _____

Total cost _____

Payment Information

☐ **Cash** ☐ **Check** (Payable to District 833 Community Education)

Credit card, please charge my:

☐  ☐  ☐  ☐ 

_____ - _____ - _____ - _____

Expiration date _____ **Signature** _____

Print name _____

Office use only ☐ Mail ☐ Walk-in ☐ Fax **Date** _____

Check # _____ **Cash Receipt #** _____ **Amount Paid** _____



Financial Assistance Application South Washington County Schools Community Education Youth Programs

Please submit this application with your registration form and a copy of your Educational Benefits letter for the current school year. Only one copy of the notification letter is necessary. If you have already submitted your family's letter to SoWashCo Community Education this year, please indicate that it was submitted below. Financial Assistance applications and Community Education registration forms are available online at commed.sowashco.org/financial-assistance.

Please complete a separate application form for each registration form.

Financial assistance MUST be requested ONE WEEK before the start of the class – late applications may be denied.

- You must live within the boundaries of South Washington County Schools (SoWashCo Schools) ISD #833 to qualify for financial assistance.
- Financial assistance does not cover the cost of uniforms. Participants must pay for uniforms.
- If your family has been approved for free Educational Benefits the cost of a class is \$15 or 25% of the program/class fee, whichever is greater.
- If your family has been approved for reduced Educational Benefits the cost of a class is \$15 or 30% of the program/class fee, whichever is greater.
- District residents may apply for financial assistance up to **\$250 per participant** (for the fiscal school year July 1-June 30).
- All information will be kept confidential.
- Applications can be completed online at commed.sowashco.org/financial-assistance.

Please complete all the information below:

Child's name		
Address		
City	State	Zip Code
School child currently attends		Grade
Parent/Guardian name		
Day phone	Evening phone	
Course number and name		
Course start date		
<input type="checkbox"/> Free or <input type="checkbox"/> Reduced Educational Benefits letter for 2024-25 is attached or was submitted to Community Education		

To be completed by Community Education office staff:

Total/Course Fee: \$ _____

Amount of Financial Assistance Awarded: \$ _____

Amount from Participant: \$ _____

If you have questions regarding financial assistance please contact:
Mary Meier at 651-425-6616 or mmeier@sowashco.org

Revised 10/24/2024



Thank You!

VIP Red Carpet Dance

Together we raised over \$14,000 for youth financial assistance so more kids can participate in afterschool activities!

Thank you to ALL of our VIPs...especially our students, staff, community volunteers and sponsors!



Apply now through your **School Café** account.

EDUCATIONAL BENEFITS

Benefits In School

Benefits Out of School



Community Education



Athletics



Student Fees



Kids Club



Some Energy Providers



Some Internet Providers



Some Phone Providers



Public Transportation



Instrument Rentals



Field Trips



School Funding



Theatres



Zoos



Museums



More

Educational Benefits (formerly known as Free and Reduced Lunch) provide various discounted or free benefits to eligible students.

Every family with children enrolled in SoWashCo Schools is encouraged to apply. Households that qualify will receive discounted or free services both in and out of school. Even if you don't think your family will qualify, your completed application could provide additional funding for your child's school!

Applications can be completed online through SchoolCafé, or they can be printed. Printable applications are available in English, Hmong, Somali and Spanish at sowashco.org/edbenefits.





8400 E. Point Douglas Rd. S.
Cottage Grove, MN 55016



*Dates, times
and locations
may change.
View the most
up-to-date
information
online.*

How to scan the QR code



Open
camera
app



Frame
the QR



Click the
pop-up

NON-PROFIT ORG.
Permit #12
COTTAGE GROVE, MN
55016-3324

Register Online at sowashco.ce.eleyo.com



Join Our Team!

Immediate openings:

- School Bus Drivers
- Nutrition Services
- Paraprofessionals
- Special Education
- Athletic and Activity Coaches

Work in the
community
you live in!

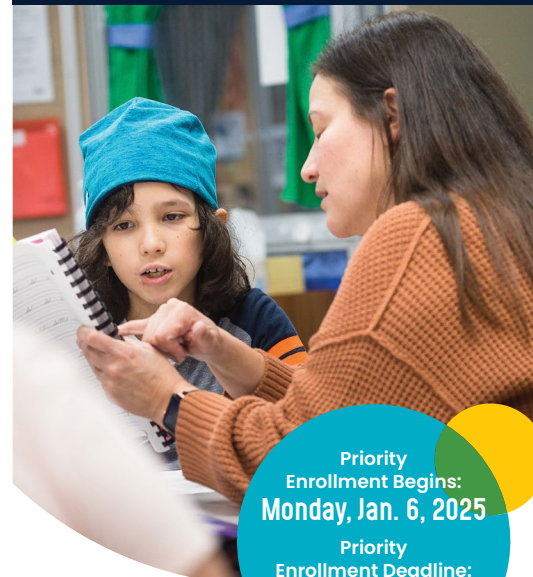


Apply at sowashco.org/careers



COMING SOON

2025-26 School and
Enrollment Guide



Priority
Enrollment Begins:
Monday, Jan. 6, 2025

Priority
Enrollment Deadline:
Friday, Feb. 7, 2025



Enroll online at
sowashco.org/enroll