

Rise STEM Academy For Girls



Week Ending December 06, 2024



Rise STEM Academy For Girls

➤ **Work Completed:**

- Continued interior excavation.
- Slab preparation is underway.
- Continue with interior CMU work.
- Continue with ICF work.
- Plumbing under-slab work is progressing.
- Basement ICF wall was poured.

➤ **Upcoming Work / Look Ahead:**

- Continue interior excavation across sections.
- Continue constructing interior footings on the main levels.
- Proceed with Stalla frame installation as needed.
- Continue ICF work in various sections.
- Continue masonry work as required.
- Continue under-slab plumbing work on the main level and other sections.
- Continue under-slab electrical work on the main level and other sections.

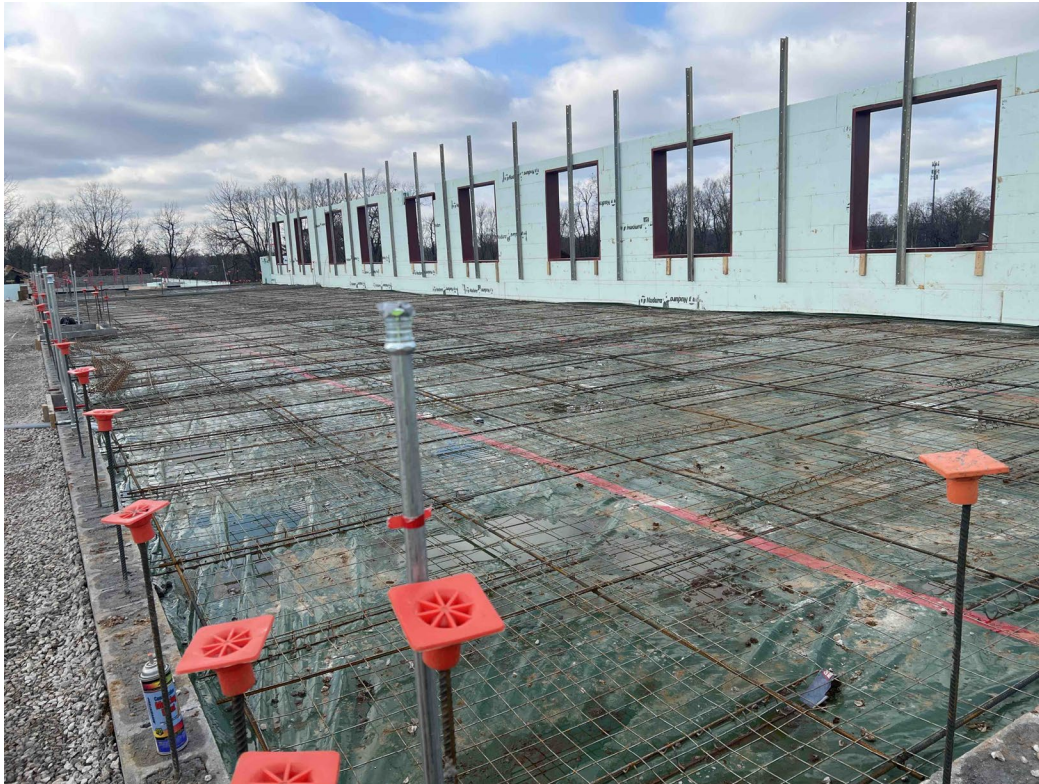
Rise STEM Academy For Girls

Interior CMU Work in Progress



Rise STEM Academy For Girls

Interior Slab Preparation in Progress



Rise STEM Academy For Girls

ICF Work in Progress



Rise STEM Academy For Girls

ICF Work in Progress



Rise STEM Academy For Girls

ICF Work in Progress



Rise STEM Academy For Girls

Plumbing Under-slab Work in Progressing

