



QSI INTERNATIONAL
SCHOOL OF DILI



Intensive English Class

2024-2025

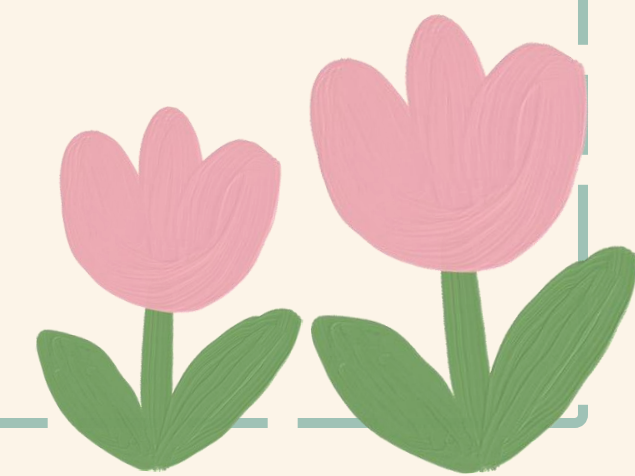
Nita Sari



QSI INTERNATIONAL
SCHOOL OF DILI



2024 - 2025
Intensive English Class



INTENSIVE ENGLISH CURRICULUM

The Intensive English course is designed to support students at the early stages of English language acquisition. This developmental program begins with building foundational skills in listening, speaking, reading, and writing. As students progress, they continuously reinforce these basics while expanding their abilities in grammar, vocabulary, spelling, and handwriting. The course aims to boost students' confidence in communicating verbally, reading more complex texts, and writing short, well-structured paragraphs, ultimately preparing them to transition into mainstream classrooms with their peers.




PROGRAM STRUCTURE

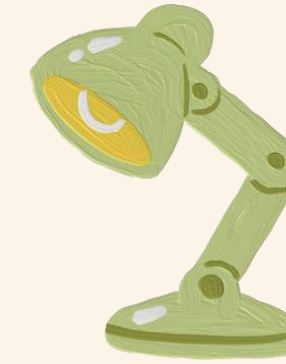


The curriculum is differentiated into three groups based on age:

6/7 YO	Focus on foundational skills in listening, speaking, reading, and writing. Units include "New to English," "Establishing Myself as a Communicator and Writer," and narrative/nonfiction writing.
8/9/10 YO	Builds on foundational skills with more complex communication skills. Units cover retelling stories, nonfiction, opinion writing, research, and drama.
11/12/13 YO	Advanced development in reading comprehension, writing skills, and preparing for mainstream classroom transition. Units include personal narrative, persuasive writing, and poetry.

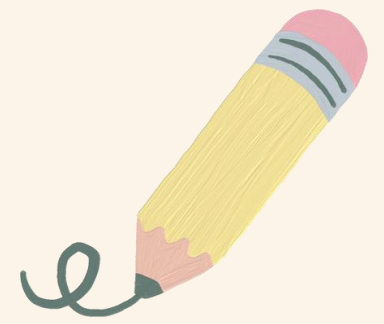


KEY THEMES & UNITS



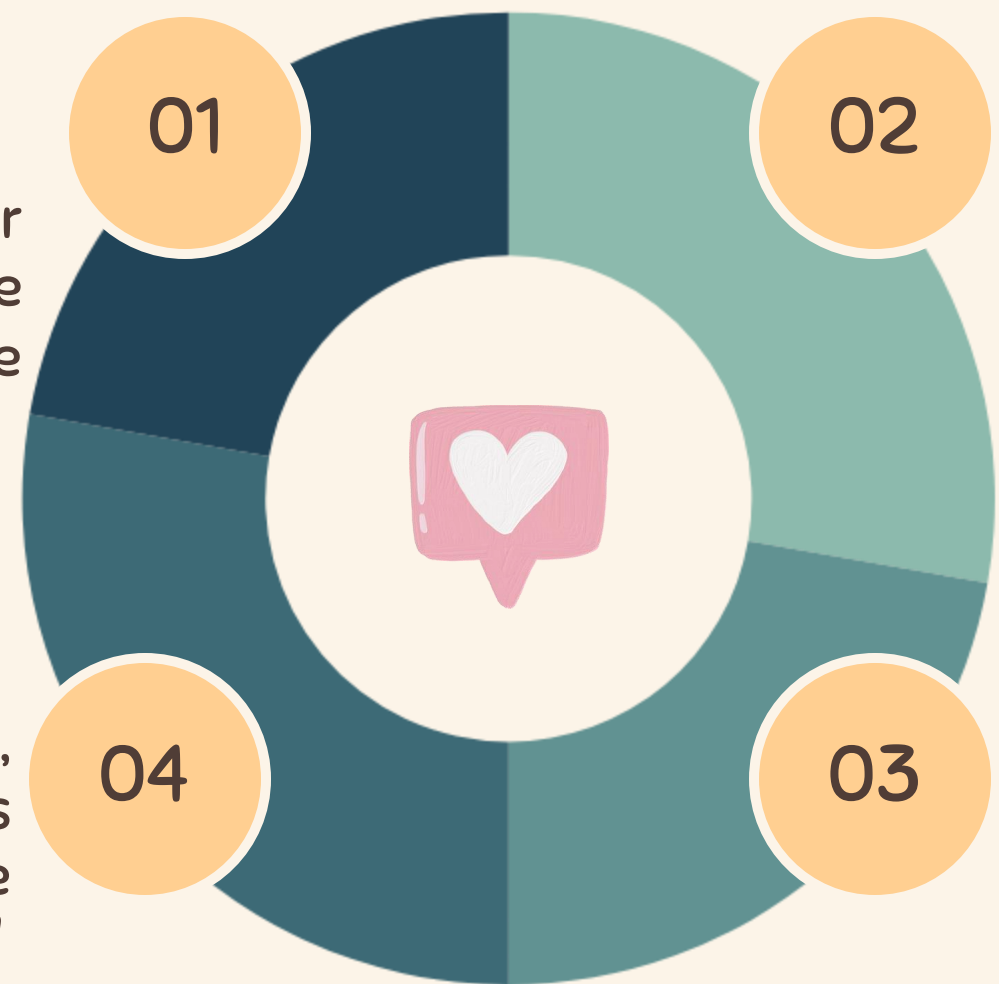
Literacy Development	Progressive Skill Building	Integrated Learning
Focused on both reading and writing across various genres.	Each unit is designed to build on the previous, ensuring steady progress in language acquisition.	Intensive English Reading and Writing are integrated to ensure holistic language development, with at least 20 units across the year.

CLASSROOM EXPECTATIONS



Attendance

Regular attendance is crucial for language acquisition. Students are expected to attend class daily and be punctual.



Behaviour

Respect for peers and teachers is paramount. Our classroom is a safe space for learning, and students are expected to contribute positively to the learning environment.

Participation

Active participation in class discussions, group work, and individual activities is essential. This not only helps in language practice but also in building confidence."

Homework

"Homework will reinforce what is learned in class. It's important that students complete their assignments on time to keep up with the course material."



GRADING SYSTEM OVERVIEW

Assessment Categories:



01

Classwork (45%)

Daily participation, in-class assignments, and engagement in discussions.

02

Projects (25%)

Major assignments like narrative writing, research projects, and presentations.

03

Quizzes & Tests (20%)

Lorem ipsum dolor sit amet, consectetur adipiscing elit. Suspendisse quis enim pretium, bibendum ante ullamcorper.

04

Homework (10%)

Completion of assignments outside of class to reinforce learning.

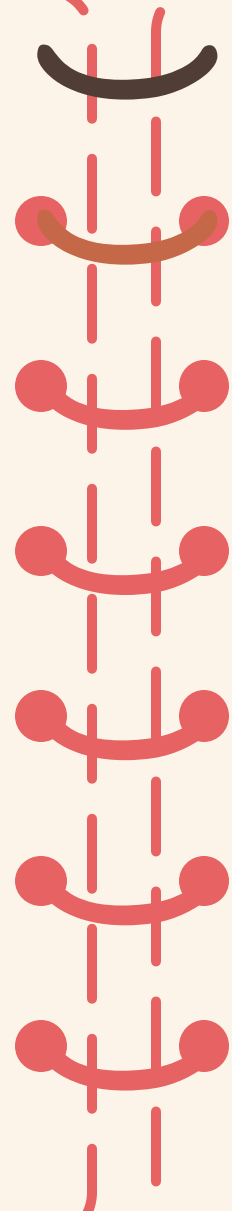


QSI INTERNATIONAL
SCHOOL OF DILI

Classroom Expectations

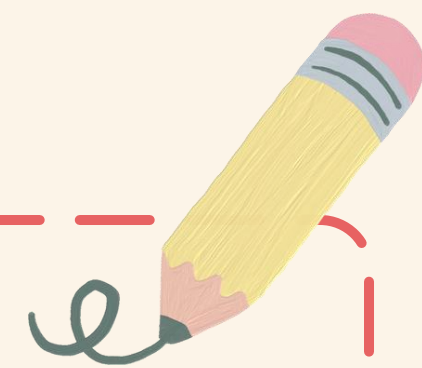
General Overview

In our classroom, students are expected to maintain respect and inclusivity by actively listening, using respectful language, and fostering a supportive environment that honors diverse cultural backgrounds. Active participation in class activities, discussions, and group work is essential, as consistent practice builds confidence and fluency in language learning. Punctuality and preparedness, including bringing necessary materials and completing homework, ensure that class time is used effectively.



History

The rationale behind these expectations is rooted in best practices for language acquisition. Research highlights that a respectful and supportive classroom environment enhances motivation and engagement, crucial factors in language learning. Active participation, consistent practice, and a growth mindset are key to developing fluency. Punctuality and preparedness ensure students maximize their learning opportunities, while academic integrity fosters a culture of trust and responsibility.





COMMUNICATION

Email: nita-sari@dili.qsi.org

The Crocodile Chronicle – School Weekly Newsletter

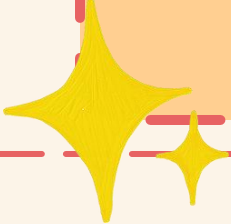


QSI INTERNATIONAL
SCHOOL OF DILI






"BUILDING CONFIDENCE, COMMUNICATION, AND CONNECTION"



"The Intensive English program is more than just learning a language—it's about building confidence, unlocking opportunities, and fostering connections across cultures. As we've seen today, students progress by developing foundational skills, engaging with diverse texts, and growing their ability to communicate effectively. Through consistent practice, a supportive environment, and a growth mindset, each student has the potential to thrive and achieve their goals. Let's continue to support and inspire them on their journey."



ABOUT ME



Hello, my name is Nita, and I have been teaching for 14 years, including 9 wonderful years QSI Dili. Before that, I spent 5 years teaching in Indonesia at a Montessori school, where I developed a deep appreciation for child-centered learning. My journey began with teaching Pre-K and Kindergarten for 7 years, an experience that enriched my understanding of early literacy and decoding—a strong foundation that now supports my work in Intensive English. I am a certified trainee from the Institute of Multi-Sensory Education (IMSE) and hold certifications in the RGR (Really Great Reading) Blast Foundations and HD Word programs, equipping me with tools to deliver effective, multisensory instruction. Teaching is my passion, and I am deeply committed to fostering growth, confidence, and a love of learning in my students. I find immense joy in making a positive impact and guiding students on their journey toward language mastery.



Thank You



QSI INTERNATIONAL
SCHOOL OF DILI