



*Now offering
youth classes
immediately
after school!*

WINTER
2025



WILLMAR
**COMMUNITY
EDUCATION**

Inspire. Engage. Learn.

wce.willmar.k12.mn.us



Dear Community Members,

As we welcome the beauty of the winter season, we are thrilled to present our new class offerings in this year's winter catalog. Whether you're looking to embrace the cozy spirit of winter by exploring creative hobbies, focus on wellness and self-care, or dive into learning something entirely new, our diverse selection of classes has something for everyone.

If you haven't yet experienced a Community Education class, this winter is a wonderful time to join. Our classes offer opportunities to connect with neighbors, spark creativity, and enrich your life while staying engaged with our vibrant community.

We are always eager to hear your suggestions for future programs. Your ideas help shape our offerings and ensure that we continue to provide meaningful and exciting learning opportunities for all. Please don't hesitate to share your thoughts with us—we are here to support your lifelong learning journey.

Thank you for your continued participation and support. We look forward to seeing you in one of our classes this winter and wish you a season filled with discovery, growth, and warmth.

With warm regards,

Alex Wolter, Director of Community Education
and the Willmar Community Education Staff

SCHOOL DISTRICT 347 BUILDING DIRECTORY:

Adult Basic Education

1234 Kandiyohi Ave SW 231-8480

Area Learning Center

512 8th St SW 214-6692

Cardinal Place

Kennedy School 214-6680

Lakeland School 263-5020, ext. 5025

Roosevelt School 231-8471, ext. 7577

Community Education

231-8490

1234 Kandiyohi Ave SW

(Jefferson Learning Center)

Kennedy Elementary

K • 214-6683

824 7th St SW

1-5 • 214-6688

Lakeland Elementary

1001 Lakeland Dr SE

263-5020

Middle School

201 Willmar Ave SE

214-6000

Roosevelt Elementary

1800 19th Ave SW

231-8470

Senior High

2701 30th St NE

231-8300

Willmar Education & Arts Center

611 5th St SW

231-8500

MISSION STATEMENT

The mission of Willmar Community Education is to support and encourage lifelong learning in areas of academics, enrichment, personal growth, and wellness activities. Willmar Community Education strives to meet the needs of area residents and surrounding communities through collaboration, partnerships, and non-duplication of services.



Willmar Community Education welcomes all persons and families to participate in the programs and services listed in this brochure. If you need help translating these offerings into your native language, please contact one of our bilingual Cultural Liaisons listed here. We hope to hear from you soon!

Bulshada waxbarshada Willmar waxay soo dhaweyneysaa qof iyo qoys kasta inuu ka qayb galo barnaamijyada iyo adeegyada kuqoran warqadan. Hadaad u baahan tahay in laguugu turjumo warbixintan luuqadada hooyo fadlan la xidhiidh qofka ku hadla labada luuqadood ee hoos ku qoran. Waxaan rajeyneynaa maqalkaaga si dhakhso ah!
Shafia Abdullahi
320-231-8492, ext. 6308

Willmar Community Education le da la bienvenida a todas las persona y familias a que participen en todos nuestros programas ofrecidos en el folleto. Si necesita ayuda a traducir lo que nosotros ofreceremos en su lenguaje nativo, por favor comuníquese con nuestras asistentes Culturales. ¡Esperamos saber de ustedes pronto!
Dulce Álvarez
320-231-8492, ext. 6328

Inspire. Engage. Learn.

CONTENTS

Early Childhood3-9

Cardinal Place10

Youth Enrichment11-19

Aquatics20

Adult Enrichment22-28

Online.....29-33



Inclement Weather & School Closings

If Willmar Public Schools classes and activities are cancelled, Community Education classes / activities may be cancelled as well. Tune to local radio stations 95.3 FM, 96.3 FM, Q102/102.5 FM, and 1340 AM or 1590 AM for notification of cancellations or call 320-231-8490 for updated information.

Cancellation Refund Policy

Community Education will not issue refunds for cancellations made after the published registration deadline or less than a week before the course start date. Cancellations made prior to the registration deadline or week prior to course start date will be assessed a 5% service charge.

Scholarships

Call 320-231-8490.

Special Assistance

Willmar Community Education embraces individuals with disabilities in all of our programs and activities. We will provide reasonable accommodations to adults and children with disabilities. Please let us know about any special accommodation which may be necessary within 2 weeks of program start by calling 320-231-8490.

Photos

By registering and participating in Willmar Community Education programs you are giving Willmar Community Education permission to use these photos in the media. Photos may be taken during all Willmar Community Education programs. These photos may be used to promote programs in the media.

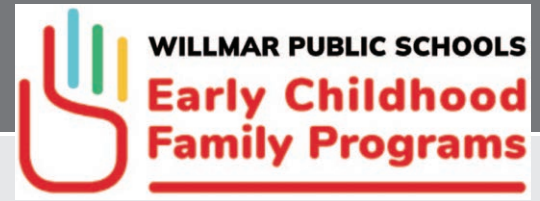
Jefferson Learning Center
1234 Kandiyohi Avenue SW
320-231-8490
wce.willmar.k12.mn.us

Welcome

To Early Childhood Family Programs

Welcome to the Willmar Public Schools Early Childhood Department! We're dedicated to supporting families in their journey as parents and caregivers, emphasizing the crucial role of early learning in shaping a child's future success. Our committed staff provide top-quality programming to nurture growth and development for children and families alike. We invite you to join our community and stay connected through our Facebook page, www.facebook.com/willmarecfp, where you'll find valuable videos, resources, and information for all. Thank you for your ongoing support of our programs.

Warmest Regards,
Willmar's Early Childhood Team



Early Childhood Family Education (ECFE)

Welcome to Early Childhood Family Education (ECFE), where we lay the groundwork for a lifetime of learning. Our classes provide opportunities for children and families to learn and grow together, with dedicated time for both joint activities and independent learning. Parents and guardians have the chance to gain valuable insights and access resources from our experienced parent educators. Join us as we embark on this journey of discovery and growth together.

Early Childhood Special Education (ECSE)

ECSE provides opportunities for the growth and support of children and their families. Any child between birth and five years with a demonstrated developmental delay and who meets eligibility criteria can receive services.

If you have concerns about a child's development, please contact Help Me Grow at 1-866-693-GROW to make a connection for potential services.

help me



helpmegrowmn.org



**Are you NEW
to Willmar?
Are you a
NEW Parent?**



**Complete this
form to stay connected and
receive important updates
and information
tailored for you
and your family.**



Preschool Programs

We offer programming for 3 and 4-year-old children. These play-based learning opportunities help prepare children for success in kindergarten and beyond.

See page 4 for more information.

S.O.S. (Support on Site)

We want to share information with families even if you cannot attend an ECFE class. SOS will be out and about at various locations to provide information for families with young children.

Kids Together and Cardinal Kids Preschool

3-YEAR-OLDS

Age: Child must be 3 on or before 9/1/2025
All 3's classes are held at Jefferson Learning Center

Classes are half days, 2, 3 or 4 days per week. Transportation is the responsibility of the parents. **Kids Together 3's** is a nine-month program that gives children opportunities to play and learn in a classroom setting, focusing on developing social and emotional skills while learning in a fun and engaging classroom.



4-YEAR-OLDS

Age: Child must be 4 on or before 9/1/2025

All 4 year old children will be placed in their home school boundary unless there is a waitlist.

Kid's Together 4's and **Cardinal Kids Preschool** are nine-month programs that give children the opportunity to meet and play with other children while learning important pre-kindergarten school skills in a play-based classroom setting.

Kid's Together 4's is offered five days a week AM or four days a week PM sections.

Cardinal Kids is an all-day, everyday program.

Starting in the fall of 2025, your child can participate in 4-year-old preschool programming at no cost if they meet the age requirement and one or more of the following criteria determined by MDE:

- Qualifies for free or reduced-price lunch
- Is an English learner (2 or more languages in the home)
- Is an American Indian
- Has experienced homelessness in the last 24 months
- Has an Individualized Education Program (IEP) or interagency intervention plan
- Is identified through health and development screening with a potential risk factor
- Is in foster care, kinship care, or in need of child protection services
- Has a parent who is incarcerated
- Has a parent who is a migrant or seasonal agricultural worker
- Qualifies using state general financial eligibility requirements listed in MN State Statute 119B.09
- Is defined as at risk by the school district

If your child doesn't meet one of the listed criteria, they are still welcome to attend with a tuition fee.

REGISTRATION

Online Registration opens Wednesday, March 5th at 7:30 am. Scan the QR code for more information.



<https://shorturl.at/QkGkm>

Early Childhood

EARLY CHILDHOOD SCREENING

Minnesota Law requires all children to be screened before school enrollment. Age 3 is the recommended age for this health and developmental screening. If your child is older than 3 and has not been screened, give us a call today!

3 reasons to screen at age 3:

1. Early screening can help set your child up for school success.
2. Any health or learning concerns can be found and help provided sooner.
3. Screening is free and can assist in uncovering any potential issues with your child's development.

Early Childhood Screening helps with:

1. Finding out how your child is doing.
2. Connecting you with early childhood programs.
3. Answering your parenting questions.

At your child's screening appointment, we will check your child's:

- Vision and hearing
- Growth and development
- Immunization and family health history

To start the process for your child, call 320-231-8490 or scan the QR code here!



Kindergarten

**It's Registration Time
for Children Age 5 by
September 1, 2025.**

Tips to ensure you receive enrollment information:

1. Update your address and telephone number with Willmar Public Schools.
2. Complete Early Childhood Screening. Call 320-231-8490 to start the process.
3. Watch your mailbox for kindergarten registration information this spring.

If you are wondering about your child's development and if they are on track, go to: www.helpmegrowmn.org/HMG/developmilestone/5years/index.html

ECFE at the Library

Come and experience the joy of ECFE at the library! Join us for a delightful session where we'll read engaging stories, use props to enhance the experience, sing cheerful songs, and get creative with art activities.

It's a perfect opportunity for families to bond, learn, and have fun together in a library setting. Registration is not necessary.

**Fridays: January 31, February 28,
March 21, April 25**
10-10:45 AM

Willmar Public Library

Free; No registration required



WILLMAR PUBLIC LIBRARY



Parent Partner

Have questions on potty training, setting boundaries, sibling dynamics, and routines? Our licensed parent educator offers:

- Parenting guidance
- Referrals to community resources
- Ideas to support development

We offer confidential, free one-on-one consultations for families with children ages birth to 3rd grade.

Call 320-979-1055 for home, virtual, or on-site visits at Jefferson Learning Center.



Marvelous Monday

Ages 0-7

Instructors: Kari and Abby

Learn and play with your little one each Monday! The day starts in our gym with bikes, playground equipment, and a climbing wall. Next, we head to our early childhood classroom for circle time with songs and stories. Midway through, it's time to engage with age-appropriate activities, art, and sensory play. While children continue their play, parents go to the adjoining room for a parenting discussion. The session ends with a goodbye circle and song.

W25-MM1

Mondays: January 13 - March 17

No Class: January 20 and February 17

8:30-10 AM

Jefferson Learning Center-106, 107, Gym

\$60; \$6 each additional child



W25-MM2

Mondays: January 13 - March 17

No Class: January 20 and February 17

10:30 AM-12 PM

Jefferson Learning Center-106, 107, Gym

\$60; \$6 each additional child



Little Cardinals Monday School

Ages 0-7

Instructors: Kari and Abby



Learn and play with your little one each Monday this fall. We will meet in the Jefferson gym. While children play in the gym, parents will join our parent educator for a short discussion. We will then rejoin together for circle and story time, play, and exploration activities.

W25-Little

Mondays: January 13 - March 17

No Class: January 20 and February 17

4-5:15 PM

Jefferson Learning Center-106, 107, Gym

\$60; \$6 each additional child

Thrilling Thursday

Ages 0-7

Instructors: Kari and Rachel



Learn and play with your little one each Thursday. The day starts in our gym with bikes, playground equipment, and a climbing wall. Next we will head to our early childhood classroom for a circle time with songs and stories. Midway through comes time to engage with age appropriate activities, art, and sensory play. While children continue their play, parents go to the adjoining room for a parenting discussion. The session ends with a goodbye circle and song.

W25-Thursday

Thursdays: January 16 - March 20

No Class: February 6

9:30-11 AM

Jefferson Learning Center-106, 107, Gym

\$60; \$6 each additional child



Early Childhood



EGG: Empowering Generational Greatness

Ages 3-5

Instructors: Kari and Rachel



EGG is a program that helps kids get better at thinking ahead, sticking with tasks, and solving problems. A good relationship between parents and kids is important for learning these skills. Join Rachel and Kari to learn how to build these skills and make family bonds stronger. This class is intended for children ages 3 to 5, but younger siblings are welcome to join us.

W25-Egg

Tuesdays: January 14 - March 18

4-5:30 PM

Jefferson Learning Center-106, 107

\$40; \$3 each additional child

Dino-rific Day!

Ages 0-7

Instructor: Kari



If you love dinosaurs, make sure to come to Dino-rific day! Enjoy books, music, art, a sensory table, and all things dinosaurs!

W25-Dino

Tuesday, January 7

10-11 AM

Jefferson Learning Center-106

\$6; \$3 each additional child

Interactive Storytime with Ms. Kim

Ages 0-7

Instructor: Kari and Ms. Kim



Join Kari and Ms. Kim (a retired speech and language pathologist) for interactive storytelling of "The Hat."

W25-Hat

Friday, January 10

10-10:45 AM

Jefferson Learning Center-106

\$6; \$3 each additional child

Under the Sea

Ages 0-7

Instructors: Kari



Dive into an ocean of adventure! Join us for an exciting journey to discover amazing creatures that live beneath the waves! Get ready for a splash-tastic time filled with art, sensory play, stories, and music!

W25-Sea

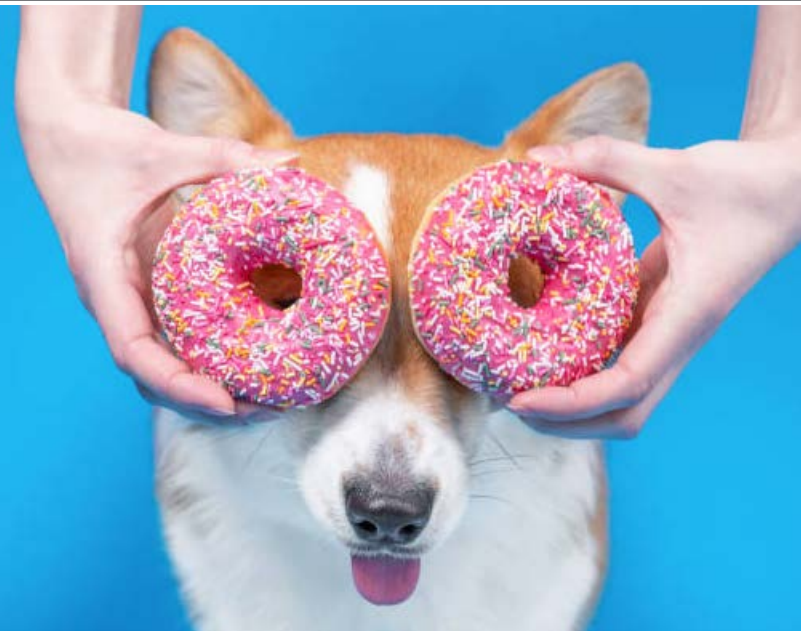
Tuesday, January 21

10-11 AM

Jefferson Learning Center-106

\$6; \$3 each additional child





If You Give a Dog a Donut!

Ages 0-7

Instructor: Kari



Bring your imagination and join us for a delightful experience inspired by Laura Numeroff's beloved book, *If You Give a Dog a Donut!*

W25-Dog

Friday, January 24

8:45-9:45 AM

Jefferson Learning Center-106

\$6; \$3 each additional child

Baby & Toddler Time

Ages 0-2

Instructor: Kari and Abby



Enjoy activities, songs, take-home keepsakes and movement games together with your baby/toddler. Our focus will be on bonding with your child, discussing development, the adjustment to parenthood, and new-parenthood concerns.

W25-Time

Tuesdays: February 11 - March 4

8:30-9:30 AM

Jefferson Learning Center-106

\$24; \$3 each additional child

ECFE at the Village!



Join us on the first Wednesday of each month as we bring ECFE fun to the fabulous Village Children's Museum. (Free to Village Members or Day Pass purchased at The Village for \$5 per child; no adult admission required).

Wednesdays: January 8, February 5, March 5, April 2, May 7

10-11 AM

The Village Children's Museum

No registration necessary

\$5.00 per child payable at

The Village, unless you are a Village member



Newborn Coffee Hour

Parents/caregivers and infants 0-12 weeks



Parents and babies are invited to join our licensed Parent Educator and Public Health Nurse/Lactation Specialist. This free group meets each Tuesday to discuss topics such as New Life with Baby, Breastfeeding, Relationship Changes, Body Care for Moms, and more. Each session includes weighing the baby, check-in chat, and question-and-answer time in addition to the weekly topic. Watch Facebook for specific class topics.

Tuesdays: January 7- March 18

No Class: February 4

11:30 AM-12:30 PM

Jefferson Learning Center-107

Free; No registration required



Early Childhood

Tiny Tunes

Ages 0-4

Instructors: Kari and Rachel



Is your little one ready to explore the wonderful world of music? Come join us for Tiny Tunes, a lively music class designed for young children!

W25-Tunes

Tuesday, February 4

8:45-9:45 AM

Jefferson Learning Center-106

\$6; \$3 each additional child

Winter STEAM

Ages 0-7

Instructor: Kari



Calling all little scientists, engineers, artists, and mathematicians! Join us for a magical winter-themed STEAM class designed especially for young children.

W25-STEAM

Friday, February 21

8:45-9:45 AM

Jefferson Learning Center-106

\$6; \$3 each additional child

Spring Tea Party

Ages 0-7

Instructor: Kari



Enjoy a story, music, cookies, tea, and take-home craft! Dress up if you like!

W25-Tea

Tuesday, March 11

10-11 AM

Jefferson Learning Center-106

\$6; \$3 each additional child

W25-Tea2

Friday, March 14

10-11 AM

Jefferson Learning Center-106

\$6; \$3 each additional child

Expectant Parenting

Are you preparing for the arrival of a new baby? Join us for Expectant Parenting, a comprehensive class co-taught by Willmar Early Childhood Family Education and Public Health.



Throughout this series, we will cover essential topics to help you feel confident and prepared for parenthood:

Session 1: Preparing for Delivery

Session 2: Breastfeeding

Session 3: All About Newborns & Car Seat Safety

Session 4: Bringing Baby Home

This class is offered four times a year, providing expectant parents with valuable information and support as they embark on this exciting journey.

W25-Expectant

Tuesdays: January 7 - January 28

4-5:30 PM

Jefferson Learning Center-111

\$20; Includes a book

W25-April

Tuesdays: April 1 - April 22

4-5:30 PM

Jefferson Learning Center-111

\$20; Includes a book

ECFE in a Box

Ages 1-5

\$15 per box



Enjoy ECFE at home! Each month we will have a themed box with a book, art activities, science and so much more! Everything will be included so all activities can be completed. After registering, arrangements will be made to pick up the box at Jefferson Learning Center.

W25-Go (January/February): "Things that Go"

W25-Under (March): "Under the Sea"

W25-Garden (April): "Flower Garden"





CARDINAL PLACE

Our mission is to enrich the lives of our students with creativity and adventure, protecting them from the hurried life beyond our doors, providing them with the skills they need to lead with integrity and equality as they move forward in this world.

Daily Activities Include:

- Science, Art or Tech
- Gym or Outside
- Community Service
- Social/Emotional Skills
- Homework Help

Field Trips

- 1/20 Ice Skating
(Weather Permitting)
- Spring Break TBD
Bamboo Bay Waterpark
- 3/28 Artsy Fartsy
- 5/2 Bounce Houses



Drop Off Starts at 6:30 AM

Pick Up Ends at 6 PM

Locations:

Kennedy • Roosevelt • Lakeland



WILLMAR PUBLIC SCHOOLS
CARDINAL PLACE
SCHOOL-AGE CARE

Creativity | Integrity | Adventure | Equity | Leadership

Coordinator | Mel akersonm@willmar.k12.mn.us
320-214-6680 | 320-979-4817

Billing | Allie | olsona@willmar.k12.mn.us | 320-231-8490 Ext. 6333

To learn more
wce.willmar.k12.mn.us

Youth Enrichment

Indoor Rock Climbing

Grades K-12

Instructor: Prairie Woods Environmental Learning Center



Rock climbing is a true adventure sport. It offers a chance to challenge yourself both physically and mentally. Both experienced and beginner climbers are welcome to come learn more about the sport, exercise, and have fun! The Prairie Woods ELC instructors are here to help every climber reach new heights! Equipment will be provided. Meet at the PWELC Main Building. *Pre-registration required*



W25-PWELC-CLIMB-JAN7

Tuesday, January 7

4-5:30 PM

PWELC-Main Building
\$10

W25-PWELC-CLIMB-JAN23

Thursday, January 23

4-5:30 PM

PWELC-Main Building
\$10

W25-PWELC-CLIMB-FEB4

Tuesday, February 4

4-5:30 PM

PWELC-Main Building
\$10

W25-PWELC-CLIMB-FEB27

Thursday, February 27

4-5:30 PM

PWELC-Main Building
\$10

W25-PWELC-CLIMB-MAR11

Tuesday, March 11

4-5:30 PM

PWELC-Main Building
\$10

W25-PWELC-CLIMB-MAR27

Thursday, March 27

4-5:30 PM

PWELC-Main Building
\$10



Chess: The Road to Grandmaster

Grades 6-8

Instructor: Jared Mixon



Join our Introduction to Chess Class, where we offer captivating and age-appropriate chess lessons to engage students at all beginning skill levels. Our program covers the fundamentals, openings, and strategic thinking. We start with a free play session to gauge familiarity and comfort with chess, progressively introducing skills and encouraging their application in gameplay. We spice things up with variant chess games to maintain enthusiasm and playfulness. We work closely with your child throughout the class to help them internalize chess concepts and rules. Whether they're total beginners or looking to advance their skills, students will leave with newfound knowledge and a deep passion for chess!

W25-CHESS

Wednesdays, January 8, 15, 29; February 5, 12

3-4 PM

Willmar Middle School-Conference Room
\$109

Tiny Toes Dance Adventure

Grades 2-6

Instructor: Cydney Gudmundson



Introduce your little one to the joy of movement with our class specially designed for beginners. Kids will enjoy a fun yet structured introduction to the world of dance. The small gym is located at the south end of the school. Children should wear comfortable clothing; socks are required and dance shoes are preferred.

W25-DANCE

Thursdays, January 9, 16, 23

6:15-6:45 PM

Kennedy Elementary School-Small Gym
\$45

PWELC Winter Extravaganza

Grades 1-12

Instructor: Prairie Woods Environmental Learning Center



Get outside and explore Winter with us at the Prairie Woods Environmental Learning Center! Come hit the trails on the skinny skis or Scandinavian kicksleds and learn Winter survival skills for an unforgettable adventure. Don't forget to stop inside and warm up on the indoor climbing wall!

W25-PWELC-EXTRAVAGANZA - JAN 13

Monday, January 13

9 AM-4 PM

PWELC-Main Building

\$40 per person per day

W25-PWELC-EXTRAVAGANZA - JAN 20

Monday, January 20

9 AM-4 PM

PWELC-Main Building

\$40 per person per day

Kicksled Adventure

Grades 4+

Instructor: Prairie Woods Environmental Learning Center



Learn a new way to enjoy Winter by exploring Prairie Woods with style on our Scandinavian kicksleds! We will get a brief history and instruction before setting off on the trails together.

W25-PWELC-KICKSLED

Tuesday, January 21

4-5:30 PM

PWELC-Main Building

\$10



Cardettes Mini Dance Camp

Grades: K-5

Instructor: Monica Crow & The Willmar Cardette Dance Team



Do you know a student who would enjoy dancing with the Willmar Cardettes Dance Team? Mini dance camp is a great way for kids to improve their technique, learn new choreography, and gain performance experience in a fun and supportive environment! During this session, kids will have three evenings of practice and showcase their skills on the final day during halftime of the varsity boy's basketball game. *T-shirt size submission deadline: January 1st at 4:00 PM.*

W25-DANCE-K/3

January 27, 28, 30, 31

5-6 PM

Kennedy Elementary School-Small Gym

W25-DANCE-4/5

January 27, 28, 30, 31

5-6 PM

Kennedy Elementary School-Small Gym

Popit Fidget Chocolate Bar Creations

Grades K-5

Instructor: Charlene Bzdok



Join us in creating your own M&M chocolate bars using a Popit Fidget! Come with your friends and have some fun making beautifully designed chocolate bars! You will bring home your own Popit Fidget of choice as well as some chocolate for your family-YUM! Through some additional games, you will also have the chance to win even more fidgets!

W25-FIDGETS

Friday, January 31

3:30-5 PM

Kennedy Elementary School-Cafeteria

\$29

Youth Enrichment



Winter Fun Day

Open to all

Instructor: Prairie Woods

Environmental Learning Center

Let it snow, Let it snow, Let it snow! Celebrate winter at PWELC with fun outdoor activities for everyone in the family including snowshoeing, cross-country skiing, Scandinavian kicksleds, and fat-tire bikes. Indoors, warm up by the fire, learn about some winter hobbies and try your hand at the indoor climbing wall.

Sunday, February 9

1-4 PM

Prairie Woods Environmental Learning Center

Free Entrance

\$5 Equipment rental fee for youth (up to 18 years old)

\$10 Equipment rental fee for Adult PWELC members

\$20 Equipment rental fee for Adult non-members

Intro to Cross-Country Skiing

Grades 2+ (Adults Welcome)

Instructor: Prairie Woods

Environmental Learning Center



Don't let the snow keep you inside all winter long. Come learn the basics of cross-country skiing and hit the trails to practice your new skills. Instruction and equipment provided.

W25-PWELC-XCSKI

Thursday, February 13

4-5:30 PM

PWELC-Main Building

\$10

Child and Babysitting Safety

Age(s): 10+

Instructor: Ariane Bromberg



The Child and Babysitting Safety (CABS) program from the American Safety and Health Institute provides everything you need to know for safe and successful babysitting. The YouTube "vlogger" style presentation brings a youthful, high-energy spirit to the program content and the colorful magazine format of the student book makes learning fun. From getting started with your business, working with parents and children, key safety caregiving and first aid tips, CABS will set you up for babysitting success. Students must be present for the entire class and successfully complete the core learning objectives to receive certification valid for two years. Students attend class independently and should come prepared with a notebook and pen.

W25-CABS

Friday, February 14

9 AM-12 PM

Jefferson Learning Center-Room 111

\$65

Home Alone

Grades: 2-12

Instructor: Ariane Bromberg



Is your child ready for the independence of being home alone? Parents need to be sure their children have the skills and maturity to handle the responsibility safely. Whether it is for an hour after school or several hours a day during the summer, being trusted to be home alone can be a positive experience for a child who is mature and well prepared. This class for children will address several topics relating to being "Home Alone" including age guidelines, safe habits, house rules, after-school routines, phone calls, door knocks, dog emergencies, personal safety, handling the unexpected, gun safety, severe weather, fire safety, intruders, and first aid tips. Students attend this class independently and should come prepared with a notebook and pen. Parents are encouraged to review the take-home information and discuss it with their child.

W25-HOME ALONE

Friday, February 14

12:30-2:30 PM

Jefferson Learning Center-Room 111

\$35



Futura - Where Spanish Comes Alive! “Vamos con los Animales”



Grades K-5

Instructor: Futura Language Professionals

The best way to spark enthusiasm for a language is with a topic that students love - ¡Vamos con los animales! (Let's go with the Animals) is just that! For eight LIVE virtual action-packed weeks, students will blaze new trails “visiting” a pet store, a family farm, the zoo, the ocean, and even the rainforest—All the while learning brand new Spanish vocabulary, conversation skills, useful phrases, and culture topics. Let your student explore where the wild things are in our interactive bilingual classroom. Don't miss out on a spot - register today!

W25-SPANISH-ELEMENTARY

**Wednesdays, February 19, 26; March 12, 19, 26;
April 2, 9**

4:15-5 PM

Online

\$159

Weird Nature Science



Grades 6-8

Instructor: Kara Wultange

Have you ever wanted to be a scientist or increase your understanding of the natural world? Well, you're in luck! In this class, we'll be learning about physics and the natural world through fun, easy science experiments. We'll learn about states of matter, the animal and plant kingdoms, and how things we interact with in our everyday lives really work. This is the perfect club if you love science or engineering or just want to get a little messy after school. Sign up for the whole camp, or sign up for a single day!

All Sessions

W25-VAC-NATURESCIENCE

February 19, 24, 26; March 3, 5, 10

3-4 PM

Willmar Middle School-Room W107

\$129

Single Session

W25-VAC-NATURESCIENCE-FEB19

Wednesday, February 19

3-4 PM

Willmar Middle School-Room W107

\$25

Single Session

W25-VAC-NATURESCIENCE-FEB24

Monday, February 24

3-4 PM

Willmar Middle School-Room W107

\$25

Single Session

W25-VAC-NATURESCIENCE-FEB26

Wednesday, February 26

3-4 PM

Willmar Middle School-Room W107

\$25

Single Session

W25-VAC-NATURESCIENCE-MAR3

Monday, March 3

3-4 PM

Willmar Middle School-Room W107

\$25

Single Session

W25-VAC-NATURESCIENCE-MAR5

Wednesday, March 5

3-4 PM

Willmar Middle School-Room W107

\$25

Single Session

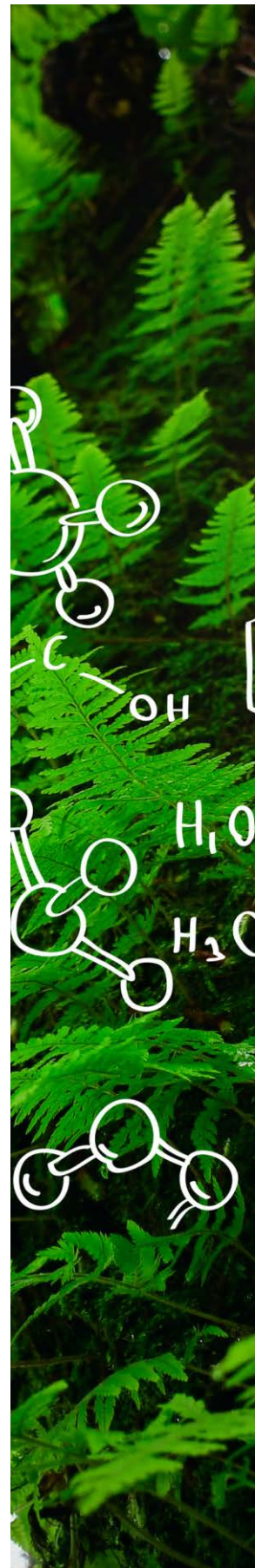
W25-VAC-NATURESCIENCE-MAR10

Monday, March 10

3-4 PM

Willmar Middle School-Room W107

\$25





Pioneer Winter Survival

Grades 3-6

Instructor: Prairie Woods
Environmental Learning Center



Do you have what it takes to survive a Minnesota winter pioneer style? Come to the 1888 cabin, dress as a pioneer, help saw wood, make candles, learn how to build a fire with flint and steel, try snowshoeing, Scandinavian kicksledding, and warm up by the fire with some hot apple cider. Meet at PWELC Farmsite.

W25-PWELC-PIONEER-SURVIVAL

Tuesday, March 4

4-6 PM

PWELC-Farmsite

\$15

TKD/Karate

Ages 6+

Instructors: Mid-MN Total Defense

Mid-MN Total Defense is a family-oriented dojo with a well-rounded approach to self-defense, drawing from a variety of martial arts in a fun and uplifting environment. We strive to prepare our students in age-appropriate ways for the challenges they may encounter in their everyday lives, such as bullying, harassment and physical confrontation. We utilize games, drills, and other tools to educate and train our minds and bodies to respond to these situations calmly and decisively. Parents are encouraged to train with their children for free. This does not include testing, uniforms, or equipment.

Orange/Gold Belts

W25-TKDK-ORANGEGOLD

Training will continue in basics, advanced techniques, forms, self-defense, and sparring for your belt level.



Tuesdays, March 4, 11, 18;

April 1, 8, 15, 22, 29; May 6, 13

6:10-7 PM

Kennedy Elementary School-Small Gym

\$50

Green Belts and Up

W25-TKDK-GREENANDUP

Training will continue in basics, advanced techniques, forms, self-defense, and sparring for your belt level.



Tuesdays, March 4, 11, 18;

April 1, 8, 15, 22, 29; May 6, 13

7:10-8 PM

Kennedy Elementary School-Small Gym

\$50





ZAPPING the ACT Test Prep Seminar

Ages 14+

Instructor: Doorway To College



Students can help reduce their anxiety about preparing for college entrance exams with ZAPS® ACT Test Prep workshop. Test specialists know the ins and outs of the ACT, the kinds of challenges you'll face when taking the test, how to make the most of the test-taking time you have, and share the best strategies and secrets to select correct answers and tame test anxiety. Students who take this workshop achieve an average score increase of 2-4 points after just 5 hours of class! Students should bring a bag lunch, a calculator, and two pencils to the seminar.

W25-ACTPREP

Saturday, March 15

9 AM-3 PM

WEAC-Rehearsal Hall

\$99

Spring Pastels Cookie Decorating

Grades K-5

Instructor: Charlene Bzdok



Come have some fun with your friends decorating spring-themed cookies using pastels! While the cookies are drying, we will play a fun spring game with prizes. At the end of this class you will bring home some beautifully decorated and delicious spring cookies for your family!

W25-COOKIES

Thursday, April 3

3:30-5 PM

Kennedy Elementary School-Cafeteria

\$25

Earth Day Celebration

Open to all ages

Instructor: Prairie Woods

Environmental Learning Center

Come celebrate Earth Day with a fun and educational experience for the whole family. Booths, exhibits, and activities offer information about water quality, energy efficiency, land management, and much more. Enjoy entertainment, kid activities and information about "greening" your life.

Saturday, April 12

1-4 PM

Prairie Woods Environmental Learning Center

Free, No pre-registration necessary

Code Championship Tournament Series | Virtual Computer Coding Competition



Grades 3-9

Instructor: Code Championship

Build a computer bot to play head-to-head against other coders! Whether this is your first Code Championship event or if you've been competing for years, this is the perfect way to explore the competitive coding world of Code Championship. No previous coding experience necessary. This Code Championship Series is a series of four tournaments in four weeks (it's ok to miss one or two). These tournaments are hosted online using Google Meet and the Code Championship website. If you have a browser like Chrome or Firefox, no additional download is required. Please come with knowledge of how to navigate the internet with basic typing and mouse control skills. The link to the Google Meet event will be emailed two days before the tournament.

W25-CODECHAMP

Saturdays, April 19, 26; May 3, 10

9-11 AM

Online (virtual - Google Meet)

\$75



Ice Cream Science

Grades K-5

Instructor: Charlene Bzdok



This class is designed for youth to have fun while learning some inquiry-based science concepts. We will be using the simplest of techniques (freezer bags and ice). At the end of class we will have an “ice cream social” with a variety of flavored syrups and toppings to choose from. Come and have some fun!

W25-ICECREAM

Friday, May 9

3:30-5 PM

Kennedy Elementary School-Cafeteria

\$35

Engineering in Minecraft: Map Builder

Grades 3-7

Instructor: Tech Academy



This course introduces students to Minecraft circuit-building and engineering concepts using Redstone. We will build 2-3 electrical contraptions in this course.

Additional Technical Requirement:

Minecraft Java Edition

PC Needed (Windows or MacBook), will not work on Chromebook, tablets, or phones.

W25-TECHACADEMY-MINECRAFT

Saturdays January 11 & 18

10:00 AM - Noon

Online/virtual

\$75

Video Production: YouTube Shorts, IG Reels & TikTok



Grades 2-6

Instructor: Tech Academy

Learn the art of production video shorts for TikTok, YouTube Shorts, and Instagram Reels. Edit the video, add motion graphics, and special effects to your own video short, while practicing storytelling and film production techniques.

Additional Technical Requirement:

Cell Phone video camera or external webcam

Wondershare Filmora (free download)

PC Needed (Windows or MacBook), will not work on Chromebook, tablets, or phones.

W25-TECHACADEMY-PRODUCTION

Wednesdays, February 5 & 12

6-7:00 PM

Online/virtual

\$55

Intro to Video Game Design with Nintendo Characters



Grades 1-4

Instructor: Tech Academy

Create YOUR OWN VIDEO GAME! Love video games? Choose your storyline with popular Nintendo characters as your stars. Add challenges and difficulty levels.

Additional Technical Requirement:

Scratch and scratch account- Instructions will be emailed

PC Needed (Windows or MacBook), will not work on Chromebook, tablets, or phones.

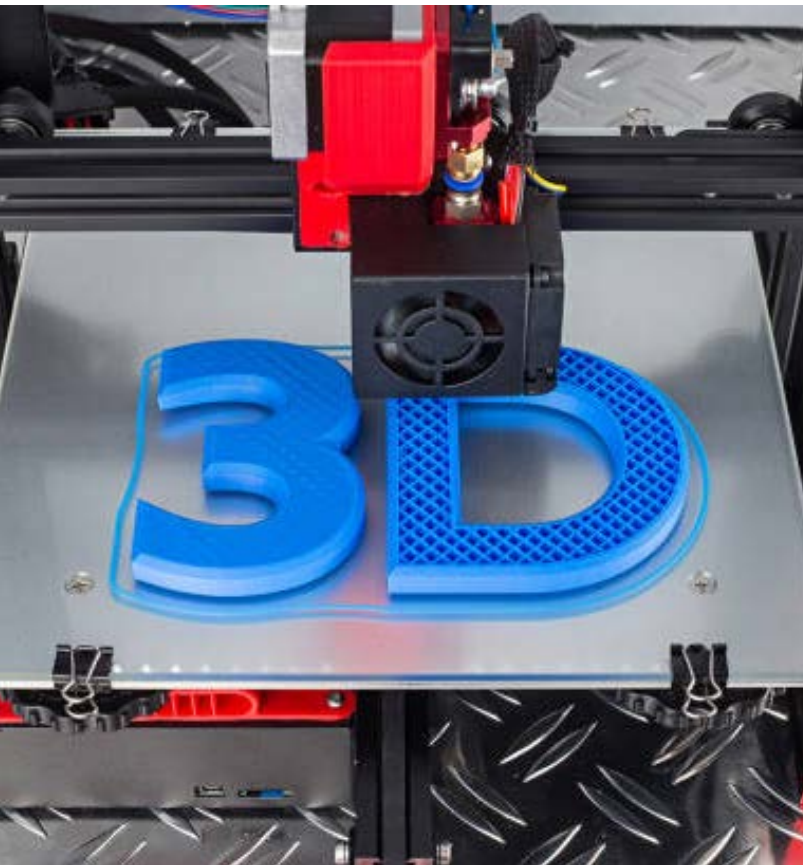
W25-TECHACADEMY-GAMEDESIGN

Tuesday, February 18

6-8:00 PM

Online/virtual

\$39



Intro to 3D Printing

Grades 1-4

Instructor: Tech Academy



This 3D printing camp takes students through the 3D printing process from start to finish. Students will be designing a keychain, and the 3D print will be mailed home. No experience is necessary, but familiarity with doing common tasks using a computer and keyboarding is required. Fees listed include printing fee for one project.

Additional Technical Requirement:
TinkerCAD (login information provided during class)
PC Needed (Windows or MacBook), will not work on Chromebook, tablets, or phones.

W25-TECHACADEMY-3DPRINTING

Saturday, April 5

8-9:30 AM

Online/virtual

\$49

Social Circus of Willmar

Grades 9-12

Instructors: Alex Wolter, John Salgado
Maldonado, Elizabeth Fischer



Have you ever wanted to learn how to juggle or spin plates? Here, you can while discovering a transformative experience designed to support high school students in building strong identities, enhancing social skills, and mastering essential coping strategies. Our Social Circus and Mental Health Program offers a unique blend of physical activity and mental health education, creating a safe, supportive environment where students can thrive.

W25-SCMH-HS

Tuesdays and Thursdays, February 11 - April 10

No Class: March 25, March 27

3-4:30 PM

Free



**THE Y HAS ALL THE
PIECES YOU NEED!**

- › Swim Lessons
- › Youth Sports
- › Child Care
- › Group Exercise Classes
- › Virtual Fitness Y360
- › ForeverWell (55+)



**KANDIYOHI COUNTY
AREA FAMILY YMCA**
kandiymca.org

Youth Enrichment - Driver's Education

How To Get Your Driver License (ages 15-17)

- **Classroom Instruction:** Students are eligible to register and attend the classroom portion of the training program. You must attend all 30 hours of the training to be eligible for the next step of training.
- **The Blue Card:** After completing 30 hours of classroom training, you will receive a certificate of completion that you must provide when registering for Behind the Wheel (BTW) instruction. You must be registered for a BTW program in order to receive the blue card.
- **Get Your Driving Permit:** Arrange for the permit test independently at a Minnesota Drivers and Vehicle Services location. You will need the blue card, appropriate ID, your social security number, corrective lenses (if needed), and payment for the permit test fee.
- **Schedule BTW:** After receiving your permit, schedule six hours of BTW training by notifying the Community Education office when you are ready to begin the training.
- **Complete BTW Instruction:** BTW consists of one instructor and one or two students in a school district vehicle. After completion of the required six hours, you will receive a white card necessary for the license test.
- **Practice:** You will need to practice driving for six months. Minnesota law requires a student to have a permit for six months and maintain a driving log. The driving log must be submitted at the time of the road test.
- **Road Test:** Schedule the road test at a Minnesota Driver and Vehicle Services location. Students must be 16 years old to take the road test. Bring your white card, proof of insurance, fee, permit, social security number, and corrective lenses (if needed).



Driver's Education: Behind the Wheel Training Ages 15-17

Instructor: Todd Hagen



To register for Behind The Wheel (BTW) with Willmar Community Education, students must have successfully completed 30 hours of Driver's Education Classroom training. The Certificate of Completion from the classroom course must be provided at the Community Education office along with a \$300 fee in order to register and receive a blue card. A blue card is required for students to take the permit test at the Driver's License Exam Station.

We offer a driver training program approved by the State of Minnesota Department of Public Safety. Our instructor is a licensed school teacher with special certification in driver education from the state of Minnesota.

Driver's Education: Online Classroom

Ages 14+

Instructor: A+ Driving School



A + Driving School offers an online class platform through Willmar Community Education for Minnesota students.

Benefits are:

- Start classes anytime and take at your own pace
- Classes are available on-demand
- Free Study Guide to all students "Hands On" activities to reinforce information and get parents involved
- 24/7 Instructor Support
- Approved by the Minnesota Department of Public Safety

This is a virtual class. Participants must have audio and visual technology capabilities such as a laptop, tablet, or a smartphone.

No refunds are available for this course.

F24-DRIVED-CLASS-ONLINE

\$100

Once you receive a valid permit, please call 320-231-8492, ext. 6335 to schedule your six hours of BTW instruction. We strongly recommend students drive 5-10 hours with a parent/guardian before their first BTW driving session.

- BTW registration fee is non-refundable.
- BTW driving lessons must be completed within six months of receiving your blue card.
- Starting and ending location for driving lessons is at Jefferson Learning Center.
- Missed or cancelled driving lesson will incur a \$50 fee and require rescheduling that driving lesson.
- Unused BTW driving lessons are non-transferable.

We offer a driver training program approved by the State of Minnesota Department of Public Safety.



Lifeguard Training

Ages 15+

Instructor: Pam Vruwink



Become certified in American Red Cross Lifeguarding, CPR/AED for Professional Rescuers, and First Aid-valid 2 years.

Attendance at all class sessions is mandatory.

Age Prerequisite: Be at least 15 years old on or before the final scheduled session of the course.

Skill Prerequisites:

- Complete a swim-tread-swim sequence without stopping to rest:
 - Jump into the water and totally submerge, resurface then swim 150 yards using the front crawl, breaststroke or a combination of both. (Swimming on the back or side is not permitted. Swim goggles are allowed)
 - Maintain position at the surface of the water for 2 minutes by treading water using only the legs
 - Swim 50 yards using the front crawl, breast-stroke or a combination of both
- Complete a timed event within 1 minute, 40 seconds:
 - Starting in the water, swim 20 yards. (The face may be in or out of the water. Swim goggles are not allowed).

- Submerge to a depth of 7-10 feet to retrieve a 10-pound object.
- Return to the surface and swim 20 yards on the back to return to the starting point, holding the object at the surface with both hands and keeping the face out at or near the surface.
- Exit the water without using a ladder or steps.

Participants need to bring swim gear (no bikini suits), towels, pen, highlighter, water bottle, lunch and snacks each session. You will be in and out of the pool throughout each class so extra dry swim suits and towels are helpful.

Minimum class size is five participants; course will be scheduled when minimum has been reached.

W25-LGT

Dates, Times - TBD

Middle School-Pool

\$250, course fee waived for eligible participants; no charge for Willmar Community Ed staff- please contact the office for an application

Ready to dive into a new opportunity?

Willmar Community Education is hiring!

Share your love of learning. In the land of 10,000 lakes, there is a strong need for aquatics staff members! Please contact Pam Vruwink at 320-231-8492, ext. 6335, or vruwinkp@willmar.k12.mn.us if you are interested.



DOOLEY'S

PETROLEUM & NATURAL GAS

320.235.5200
dooleypetro.com

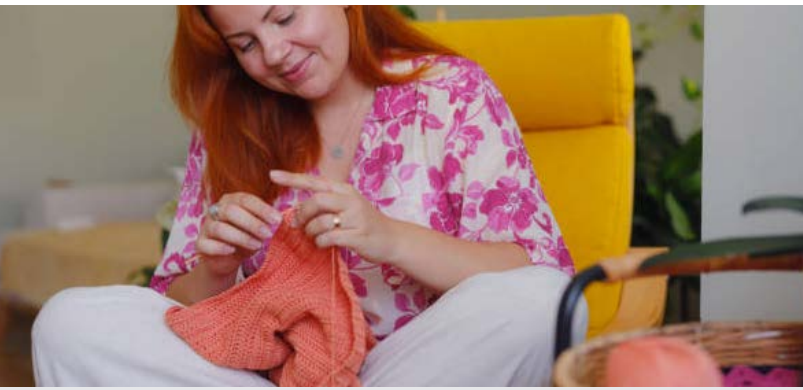


Hydrating Communities Since 1916!



www.bernicks.com

Adult Enrichment



Knitting: Beginner

Ages 12+

Instructor: Lisa Christianson



Have you ever seen a knitting project that someone else made and thought to yourself, "I wish I could do that"? Well, here is your chance to learn how to knit! In this introductory session, you will learn the basic stitches: casting on, knit stitch, purl stitch, and casting off. Using these skills, we will be making the ever popular first project - a scarf.

Required supplies: scissors, a set of size 6 or larger needles, and a skein of worsted weight (4) yarn.

W25-KNIT-BEG

Thursday, January 23

6-8:30 PM

Jefferson Learning Center-111

\$45

Knitting: Advanced Beginner

Ages 12+

Instructor: Lisa Christianson



Have you ever seen a knitting project that someone else made and thought to yourself, "I wish I could do that"? Well, here is your chance to learn how to knit a simple hat!

Required supplies: scissors, a set of 9mm (#13) circular knitting needles that are 16 inches long, and super bulky (6) yarn.

W25-KNIT-ADV

Thursday, January 30

6-8:30 PM

Jefferson Learning Center-111

\$45

Crocheting: Beginner

Ages 12+

Instructor: Lisa Christianson



Have you ever wished you could crochet? Well, here's your chance! In this introductory session, you will make a dish or wash cloth using basic crochet stitches: starting chain, single crochet, half double crochet, and double crochet.

Required supplies: scissors, size H crochet hook, and a skein of cotton yarn.

W25-CROCHET-F11

Tuesday, February 11

6-8:30 PM

Jefferson Learning Center-111

\$45

W25-CROCHET-F18

Tuesday, February 18

6-8:30 PM

Jefferson Learning Center-111

\$45



Adult Enrichment



Ceramics: Garden Pots & Posts

Ages 13+

Instructor: Rachel Jeppesen



Join us for a fun and artistic experience in this hands-on class! Begin by selecting a piece of unfinished pottery from the spring collection, featuring plant containers and decorative stakes. Next, you'll choose glazes from an array of colors in both gloss and speckled finishes. After you've finished your masterpiece, the items will be kiln-fired, and you'll be able to pick them up at Jefferson within a couple of weeks.

W25-CERAMICS

Friday, March 14

5:15-7:15 PM

Jefferson Learning Center-111

\$29

Intro to Macarons

Ages 18+

Instructor: Becca Kazemzadeh



Learn how to make macarons from scratch! This class includes demonstrations and hands-on baking. Best of all, you'll take home all of the macarons you make!

W25-MACARONS

Saturday, March 29

1-4 PM

Senior High School-206-FACS

\$120 per pair

Planty Crafts

Ages 12+

Instructor: Pam Vruwink



Do you enjoy DIY adventures? In this hands-on class, we will make a variety of fun plant-related projects.

January: Shrinky Dink plant stakes

February: Hanging propagation jars

W25-PLANTDIY-J

Saturday, January 18

9:30-11 AM

Jefferson Learning Center-111

\$10

W25-PLANTDIY-F

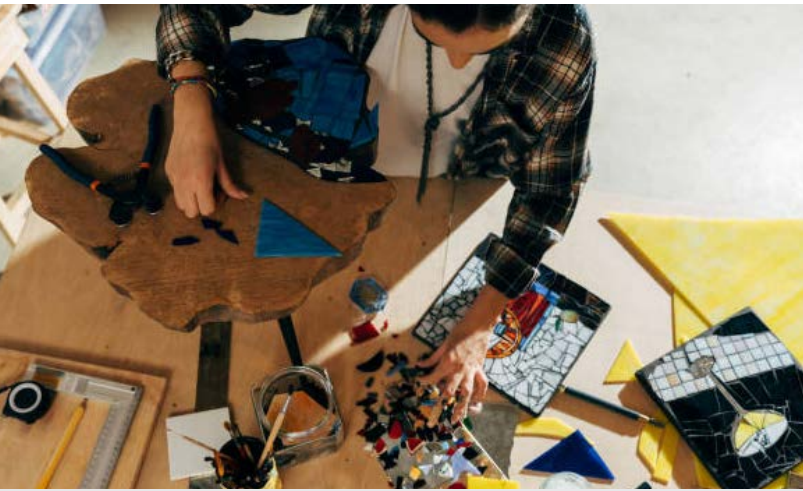
Saturday, February 22

9:30-10:45 AM

Jefferson Learning Center-111

\$10





Bailey Builds Wood Mosaic Workshop

Ages 13+

Instructor: Pam Vruwink



Unleash your creativity and make a one-of-a-kind piece to decorate your home! We supply you with everything you need and teach you step by step how to create your very own one of a kind mosaic. No experience is necessary, just come and have fun!

Participants under 16 years old should enroll with a responsible adult.

W25-MOSIAC-F

Friday, February 28

6-8 PM

Senior High School-306-Art

\$89 REGISTER AT

<https://baileybuilds.com/collections/in-person-classes>

W25-MOSIAC-M

Monday, March 24

5-7 PM

Senior High School-306-Art

\$89 REGISTER AT

<https://baileybuilds.com/collections/in-person-classes>

W25-MOSIAC-A

Thursday, April 10

6-8 PM

Senior High School-306-Art

\$89 REGISTER AT

<https://baileybuilds.com/collections/in-person-classes>

Creative Journaling & Intentional Planners

Ages 13+

Instructor: Libbie Anderson



Do you love to journal but it has been feeling stale? Or maybe you used to journal but lost interest or felt like you didn't know what to write about. This class is meant to respark your love of journaling by giving new ideas, techniques and reflective tools that are simple and purposeful. Even use it for your planner to be more productive and focused. Taking time to journal and plan will help you to make space to reflect, be intentional and express your thoughts and creativity. Please bring your journal and/or planner or contact us for one to be provided for an extra fee.

W25-JOURNAL

Saturday, March 8

10-11:30 AM

Jefferson-111

\$22

Bounce Back Project Book Club



The Bounce Back Project is focused on promoting health and resiliency. Our book reads allow us to share laughter and perspectives with one another as we learn to better understand ourselves, allow ourselves grace, and develop the courage to be who we are.

January: *The Book Woman of Troublesome Creek*, by Kim Michele Richardson

March: *Where Rivers Part*, by Kao Kalia Yang

W25-BOOK-JAN

Friday, January 31

6-7:30 PM

Jefferson-111

Free, pre-registration required

W25-BOOK-MAR

Friday, March 28

6-7:30 PM

Jefferson Learning Center-111

Free, pre-registration required

Adult Enrichment

Mike Lynch's Minnesota Starwatch

Instructor: Mike Lynch



Make the stars your old friends as we watch the great celestial show in the skies over Prairie Woods Environmental Learning Center! We'll have giant telescopes aimed at Saturn, star clusters, galaxies, and more. Get to know constellations like The Big Bear, Cygnus the Swan, Pegasus the Winged Horse, and others. Great constellation mythological stories will also be featured.

Mike Lynch is a retired WCCO Radio meteorologist and has been hosting star watch parties and teaching astronomy classes for more than 50 years! Even if it's cloudy, you'll learn a lot and have a great time!

No cancellations/refunds after March 14.

W25-STARS

Saturday, March 29

8-10 PM

PWELC-Main Building

\$25 Individual, \$35 Family (living within the same household)



Intro to Kokedama Workshop

Ages 15+

Instructor: Pam Vruwink



Learn the art of making unique Japanese inspired living plant moss balls, transforming a regular houseplant into a unique hanging display. Kokedama is a Japanese gardening technique that involves wrapping a plant's roots in soil and moss, creating a plant without a pot. All materials will be provided including a small plant, soil, moss, and twine. All you need to do is show up ready to create and get your hands a little dirty!

W25-PLANTS-KOK

Tuesday, March 25

5:45-7 PM

Jefferson Learning Center-111

\$45

Let's Propagate Plants!

Ages 12+

Instructor: Pam Vruwink



Looking to expand your plant collection? We're going to create new plants from existing plants! In this hands-on class, we will propagate plants by taking fresh cuttings from established houseplants. Our featured species will be Tradescantia, aka "wandering dude," and trailing succulents.

W25-PLANTS-TRAD

Monday, April 7

5:30-6:45 PM

Jefferson Learning Center-111

\$10

W25-PLANTS-SVC

Monday, March 3

5:30-6:45 PM

Jefferson Learning Center-111

\$10

Vanventure!

Ages 18+



Join us for a small group adventure! Our winter outings are taking us to Orchids Limited, the University of Minnesota College of Biological Sciences Conservatory & Botanical Collection, and Marjorie Nilssen Art Studio.

W25-VAN-OL

Friday, January 24

7:30 AM-2:30 PM

Jefferson Learning Center-Office

\$10

W25-VAN-UMN

Friday, March 21

8:30 AM-4:30 PM

Jefferson Learning Center-Office

\$15

W25-VAN-ART

Tuesday, April 18

12:30-3:30 PM

Jefferson Learning Center-Office

\$25

Women's Self-Defense

Ages 13+

Instructor: Mid-MN Total Defense



Self-defense skills exclusively for women, taught by women. Learn and practice simple and effective techniques for personal safety! We'll also discuss tips for online safety.

Please wear comfortable clothes you can easily move in!

W25-DEFENSE

Tuesdays: April 1, 8, 15, 22

7:10-8:20 PM

Kennedy Elementary School-Big Gym West/East

\$35



Excel Level 1

Instructor: Cheri Baron



If you work with numbers and want to learn how to use formulas or create a chart, you may want to consider using Microsoft Excel. Excel is an electronic spreadsheet program. With this software, you can keep track of a budget or organize financial information. We will create a spreadsheet, enter data, do simple calculations and create charts. You will learn tricks and shortcuts to make using Excel much easier and save you time. Make sure you bring a jump drive if you wish to save your work. Basic computer knowledge is needed.

W25-EXCEL1

Tuesday, April 8

6-8:30 PM

Jefferson-117

\$22

Word: The Next Step

Instructor: Cheri Baron



If you know the basics of a word processing program, but want to learn some additional features and shortcuts, then this is the class for you. We will use Microsoft Word to learn how to cut and paste, insert symbols, change cases, add borders and shading, insert clip art, creat numbered/bulleted/multi-level lists, set tabe and design tables. Basic computer knowledge is needed. Minimal typing skills are required as you will use a document that has already been typed. Make sure to bring a jump drive if you wish to save your work.

W25-WORD-NEXT

Tuesday, April 22

6-8:30 PM

Jefferson-117

\$22

Adult Enrichment



First Aid

Instructor: Deb Brandt



With the basic first aid you learn in this course, you could make a difference in the lives of others! This First Aid course uses Chain of Survival to teach the basics of first aid, including injury prevention and when to get help. Upon successful course completion, participants will receive First Aid certification through the American Heart Association.

W25-FA-JAN

Wednesday, January 15

6:15-9:15 PM

Middle School-143

\$65

W25-FA-FEB

Wednesday, February 12

6:15-9:15 PM

Middle School-143

\$65

W25-FA-MAR

Wednesday, March 12

6:15-9:15 PM

Middle School-143

\$65

W25-FA-APR

Wednesday, April 9

6:15-9:15 PM

Middle School-143

\$65

CPR

Instructor: Deb Brandt



If you are looking to learn or recertify in CPR, use an Automated External Defibrillator (AED), and help someone who is choking, then this hands-on class is for you. Upon successful course completion, students will be certified through the American Heart Association in adult/child and infant CPR. Don't wait! Learning CPR today could save a life tomorrow!

W25-CPR-JAN

Wednesday, January 8

6:15-9:15 PM

Middle School-143

\$65

W25-CPR-FEB

Wednesday, February 5

6:15-9:15 PM

Middle School-143

\$65

W25-CPR-MAR

Thursday, March 6

6:15-9:15 PM

Middle School-143

\$65

W25-CPR-APR

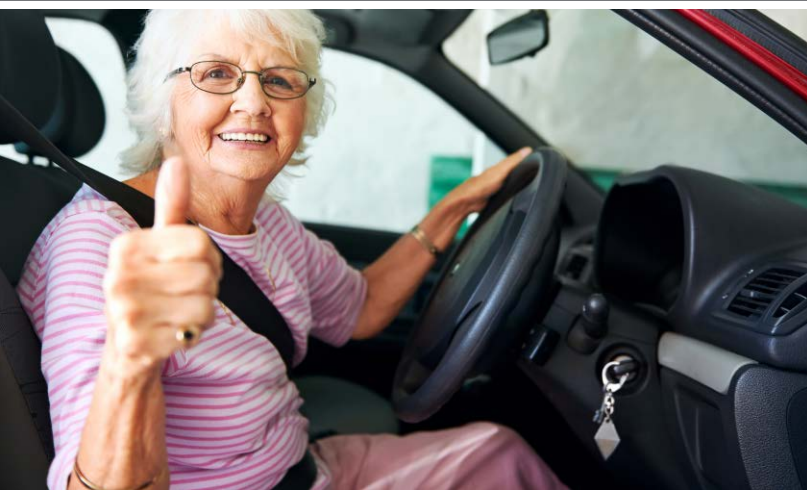
Wednesday, April 2

6:15-9:15 PM

Middle School-143

\$65





55+ Driver Discount Program

Instructor: Precision Driving Center



The Driver Discount Program is a state-approved accident prevention/insurance discount course that is open to the public; pre-registration is required. Participants will be provided with the latest information in regards to driver and traffic safety, new vehicle technology and updates with traffic laws. People ages 55 and older who complete the course qualify for an appropriate 10% discount on their auto insurance premiums for three years. Participants must complete a 4-hour refresher class every three years to maintain the 10% discount.

Registration must be completed with Precision Driving Center online or by phone. Visit www.driverdiscountprogram.com to register online or call weekdays from 9 AM-3 PM at 320-308-1400 or toll-free 888-234-1294.

Willmar Community Education is not taking registrations for this course.

Jefferson Learning Center-111
\$24

Thursday, January 9, 12:30-4:30 PM
Thursday, February 13, 12:30-4:30 PM
Thursday, March 13, 12:30-4:30 PM
Thursday, March 13, 5:00-9:00 PM
Monday, April 14, 12:30-4:30 PM

*Do you have a passion,
special skill, or talent you
want to share with others?*

**We welcome your desire to
share your knowledge!**

As an enrichment instructor you play an important role in inspiring and enhancing the lives of participants.

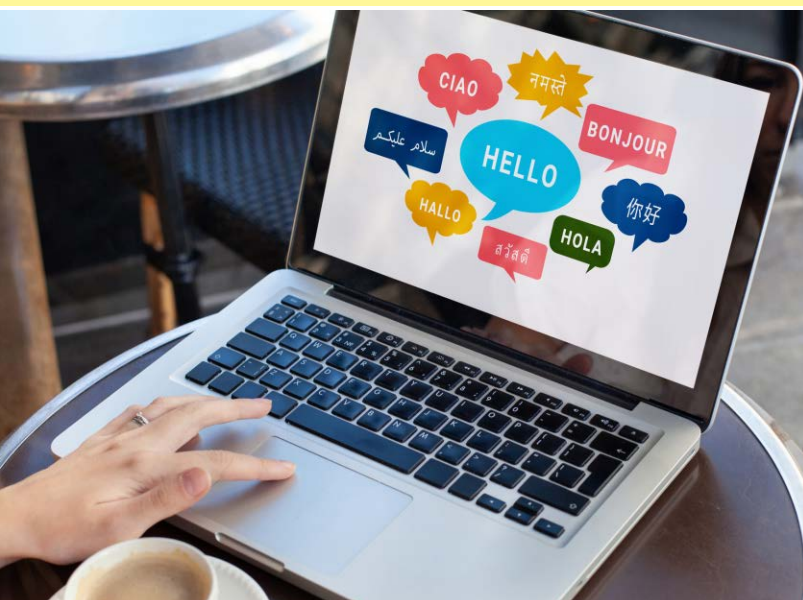
Class offerings are determined three times a year: Fall, Winter, and Summer.

Please contact Pam Vruwink (adult and aquatics) 320-231-8492, ext. 6335, or Payton Sterkowitz (youth) 320-231-8300, ext. 6004, if you would like more information!



Adult Enrichment - Virtual

These are virtual classes. Full course descriptions are available online. Participants must have audio and visual technology capabilities such as a laptop, tablet, or a smartphone.



Adult Conversational Spanish: Beginner Part 1

Instructor: Futura Language Professionals



W25-SPANISH-T

Tuesdays: February 18, 25; March 4, 11, 18, 25

6-7 PM

Online

\$109

W25-SPANISH-W

Wednesdays: February 19, 26; March 5, 12, 19, 26

6-7 PM

Online

\$109

W25-SPANISH-M

Mondays: February 24; March 3, 10, 17, 24; April 7

6-7 PM

Online

\$109

Piano by Ear

Ages 13+

Instructor: Craig Coffman



W25-EAR

Saturday, February 15

10 AM-12:30 PM

Online

\$59

Breakfast Meal Prep

Instructor: Kirsten Madaus



W25-FFF-BREAKFAST

Tuesday, January 28

6:30-8 PM

Online

\$25

Instant Pot Sweets For Your Sweetheart

Instructor: Kirsten Madaus



W25-FFF-SWEETS

Tuesday, February 4

6:30-8 PM

Online

\$25



Adult Enrichment - Virtual

These are virtual classes. Full course descriptions are available online. Participants must have audio and visual technology capabilities such as a laptop, tablet, or a smartphone.



Air Fryer Seafood

Instructor: Kirsten Madaus



W25-FFF-SEAFOOD

Tuesday, February 25

6:30-8 PM

Online

\$25

Fast Family Meals

Instructor: Kirsten Madaus



W25-FFF-MEALS

Tuesday, March 4

6:30-8 PM

Online

\$25

Face Yoga

Ages 13+

Instructor: Janice Novak



W25-IYP-FACE

Monday, February 24

6-7:30 PM

Online

\$25

Acupressure to Relieve Stress, Anxiety & Insomnia

Ages 13+

Instructor: Janice Novak



W25-IYP-ACU-SAI

Tuesday, February 25

6-7:30 PM

Online

\$25

Acupressure for Sinus Relief

Ages 13+

Instructor: Janice Novak



W25-IYP-ACU-SINUS

Monday, March 10

6-7:30 PM

Online

\$25

Acupressure Face Lift & Skin Savvy

Ages 13+

Instructor: Janice Novak



W25-IYP-ACU-FACE

Wednesday, March 19

6-7:30 PM

Online

\$25



Adult Enrichment - Virtual

These are virtual classes. Full course descriptions are available online. Participants must have audio and visual technology capabilities such as a laptop, tablet, or a smartphone.

Acupressure to Relieve Migraines, Headaches, Nausea & Vertigo

Ages 13+

Instructor: Janice Novak



W25-IYP-ACU-HEAD

Monday, March 31

6-7:30 PM

Online

\$25

Avoid the Pitfalls of Perimenopause & Menopause

Ages 13+

Instructor: Janice Novak



W25-IYP-MENOPAUSE

Monday, March 3

6-7:30 PM

Online

\$25

Posture & Osteoporosis Workshop: Building Better Bones

Ages 13+

Instructor: Janice Novak



W25-IYP-BONES

Tuesday, February 11

6-7:30 PM

Online

\$25



Tech-Savvy Survival in 60 Minutes: Essential Skills for Everyday Life

Instructor: Nickie Welsh



W25-SCS-TECH

Tuesday, January 7

12-1 PM

Online

\$25

Adult Enrichment - Virtual

These are virtual classes. Full course descriptions are available online. Participants must have audio and visual technology capabilities such as a laptop, tablet, or a smartphone.

Power Up with Google Suites: Essential Tools for Everyday Tasks

Instructor: Nickie Welsh



W25-SCS-GOOGLE

Thursday, January 9

12-1 PM

Online

\$25



YouTube Channel Starter Kit: Launch in 60 Minutes

Instructor: Nickie Welsh



W25-SCS-YOUTUBE

Thursday, January 16

12-1 PM

Online

\$25

Fast-Track to Social Media Marketing for Business

Instructor: Nickie Welsh



W25-SCS-MARKETING

Monday, January 13

12-1 PM

Online

\$25

One-Hour Instagram Mastery: Grow Your Business Today

Instructor: Nickie Welsh



W25-SCS-INSTAGRAM

Tuesday, January 21

12-1 PM

Online

\$25



Practical ChatGPT Training for Everyone

Instructor: Nickie Welsh



W25-SCS-CHATGPT

Tuesday, January 28

12-1 PM

Adult Enrichment - Virtual

These are virtual classes. Full course descriptions are available online. Participants must have audio and visual technology capabilities such as a laptop, tablet, or a smartphone.

Cell Phones & Parenting: Balancing Connectivity and Safety

Instructor: Nickie Welsh



W25-SCS-CELLPHONE

Tuesday, February 4

12-1 PM

Online

\$25

Google Sheets for Awesome Beginners

Instructor: Nickie Welsh



W25-SCS-YOUTUBE

Thursday, February 6

12-1 PM

Online

\$25

Parents with Littles: Your Technology Safety Toolbox

Instructor: Nickie Welsh



W25-SCS-PARENTS

Thursday, March 13

12-1 PM



Create Social Media Content Without Panicking

Instructor: Nickie Welsh



W25-SCS-MEDIA

Tuesday, March 18

12-1 PM

Online

\$25

Canva for Awesome Beginners

Instructor: Nickie Welsh



W25-SCS-CANVA

Thursday, March 20

12-1 PM

Online

\$25

\$Monetize\$ Websites, Blogs, and Social Media with Affiliate Marketing

Instructor: LeeAnne Krusemark



W25-MONETIZE

Thursday, February 27

6-8 PM

Online

\$29



ADVOCACY FAIR

**Saturday
March 29,
2025**

Registration: 10am- 11am

Activity Booths: 10am-1pm

Lunch served: 11am - 12:30pm

Bake Potato bar, treat & water

**** Cost \$10.00 per person**

Location:

WCI

1300 SW 22nd ST.

Willmar, MN 56201

320-231-1777

aimwcm.org



**Come explore
AIM's Four Pillars
(at your own pace)**

ADVOCACY



WELLNESS



EDUCATION



SOCIAL INCLUSION



Advocacy Fair Registration

Name: _____

Name: _____

Name: _____

Name: _____

Staff Attending: _____

Staff Attending: _____

Zip Code: _____

Return registration form
and \$10.00 payment to
AIM PO Box 214
Willmar, MN 56201
by **Friday,**
March 21, 2025!



Fitness Class

Come join us for a general fitness class. you will experience different forms of exercise from yoga to high intensity interval training.

Instructor: Amber Silva

Registration due January 10, 2025

Class Fee \$15.00

Fridays

Dates: January 17 and 24, 2025

February 7 and 21, 2025

March 7 and 21, 2025

Time: 5:00 pm- 5:30 pm

Conference room across from the AIM Office



FITNESS CLASS REGISTRATION FORM

NAME: _____

ZIP CODE: _____ **PHONE NUMBER:** _____ **EMAIL:** _____

CLASS FEE: \$15

___ CHECK (PAYABLE TO AIM) ___ CASH

RETURN COMPLETED FORMS AND PAYMENT

TO: AIM

PO BOX 214

WILLMAR, MN 56201



The Healthy Living Class is designed to educate and support participants in living healthier lives. Through education sessions, hands-on learning opportunities, and field-trips, participants will get to learn and practice new skills that can help them take steps towards making healthier choices.

Instructor: Amber Silva

Class Fee \$15.00

Registration due January 10, 2025

Fridays

Dates: January 17 and 24, 2025

February 7 and 21, 2025

March 7 and 21, 2025

Time: 3:45 pm- 4:45 pm

Conference room across from the AIM Office



HEALTHY LIVING CLASS REGISTRATION FORM

NAME: _____

ZIP CODE: _____ **PHONE NUMBER:** _____ **EMAIL:** _____

CLASS FEE: \$15

____ **CHECK (PAYABLE TO AIM)** ____ **CASH**

RETURN COMPLETED FORMS AND PAYMENT

TO: AIM

PO BOX 214

WILLMAR, MN 56201

AFTER NEW YEAR'S PARTY!!

Thursday, January 16, 2025

St. Mary's Church

713 12th St. SW Willmar, MN 56201

Time: 6-8pm

Meal served at 6pm (new caterer).

Must pick Turkey or Ham,
mashed potatoes with gravy, corn,
dinner roll, & cupcake (gluten free).
You will get a ticket for the event
that has your meat choice.

No walk-ins accepted / non-refundable!

Cost is \$14.00 per person

Register by Thursday, January 3, 2025!

After New Year's Party Registration

Meat choice : Turkey or Ham

Name: _____

T / H

Name: _____

T / H

Name: _____

T / H

Name: _____

T / H

Staff Attending: _____

T / H

Staff Attending: _____

T / H

Zip Code: _____

Return registration form
and payment to
AIM PO Box 214
Willmar, MN 56201
by **Thursday,**
January 3, 2025!

Each person will get a ticket. Questions: 320-231-1777 or valoris@aimwcm.org

New Process for Facility Requests and Payments

Starting now, you can make facility requests and payments online!

We are excited to introduce a new, convenient way to request and pay for facilities through our Eleyo system. This online platform makes it easier than ever for organizations to reserve spaces, view availability, and complete payments efficiently. Follow the steps below to get started:

How to Make a Facility Request

1. Visit wce.willmar.k12.mn.us
2. Hover over the facilities tab and click on “Facilities Calendar/Online Requests”.
3. Log In or Create an Account -
 - New user? Create an account with your contact details.
 - Returning user? Simply log in with your credentials.
4. If you do not have access to make requests online and see the message “In order to start requesting use of facilities or to manage a facility account for an organization or company online, we first need to give you access. Just send us a message or give us a call and you will be on your way to managing facility requests online”- email Lukas Nyberg: nybergl@willmar.k12.mn.us to gain access.
5. Check the Facilities Calendar to view available and unavailable dates/times before making your request.
6. Click on the green “Create New Facility Request” button.
7. Review and submit the form for approval.
8. After submission, your request will be reviewed, and you will receive email confirmation.
9. To cancel or make changes to your request, email nybergl@willmar.k12.mn.us

How to Make a Payment

1. View Your Invoice:
After approval, Eleyo will generate an invoice. You can view it in your Eleyo account.
2. Select Your Payment Method -
Choose from:
 - Credit/Debit Card (Visa, MasterCard, Discover)
 - Electronic Check (ACH)
 - Other payment options (if available).
3. Enter payment information and submit.
4. Once payment is processed, you'll receive a payment receipt and booking confirmation.



ISD #347
Willmar Community Education & Recreation
611 5th Street SW
Willmar, MN 56201

NON-PROFIT ORGANIZATION
US POSTAGE PAID
WILLMAR, MN
PERMIT NO. 667

ECRWSS
POSTAL CUSTOMER
CAR-RT PRESORT



WILLMAR ADULT EDUCATION

Online and in person options for adults to further their education and improve career skills.

- **English**
- **GED Prep**
- **Career Skills Classes**

LEARN MORE >>



320-231-8480



adulthoodeducation@willmar.k12.mn.us



1234 Kandiyohi Ave SW, Willmar

