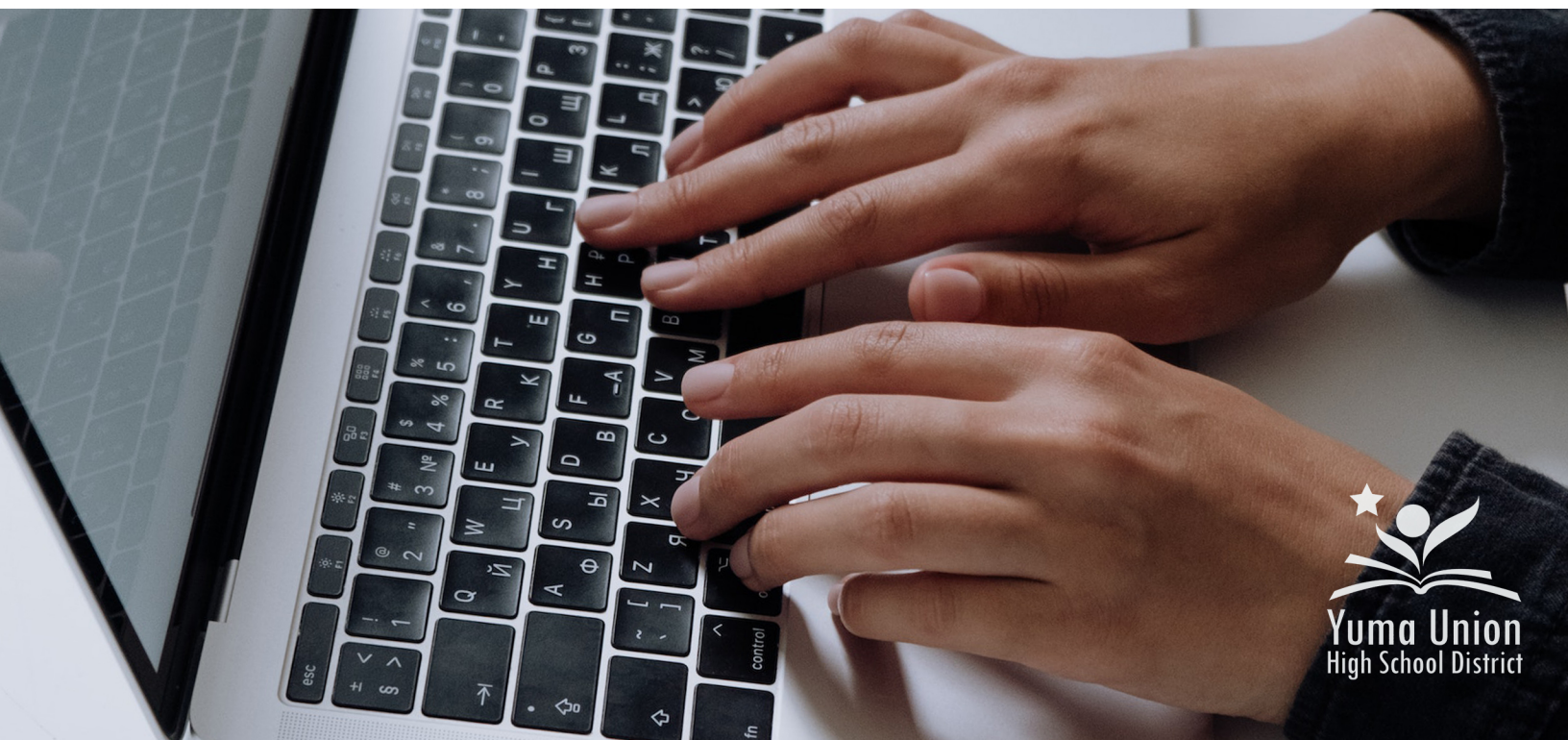




Transition Resources





Innovative Workforce Solutions

[Arizona@Work](#)

[Links to an external site.](#)

Arizona@Work's Mission Statement: Through the Customer-Centered, Data-Driven One-Stop System, we prepare and provide a qualified workforce to local businesses and assist businesses to grow and prosper.

Norma Avila, Outreach and Follow-Up Specialist / Email: navila@ypicaz.com

Office: (928) 783-9347

[Types of Certificates: GED, Commercial Driver's License, Microsoft Office Specialist, Paralegal Studies, Nursing Assistant \(CNA\), Medical Assistant, Computer Security](#)



[Arizona Western College](#)

[Links to an external site.](#)

[Accessibility Office](#)

[Links to an external site.](#)

Office: (928) 344-7674

Email: accessability@azwestern.edu

Hours: Monday - Thursday: 8:00am - 6:00pm

Friday (remote only): 9:00am - 3:00pm

Our Goals:

- Provide reasonable accommodations and support services
- Promote achievement of students' educational and career goals
- Offer training and support to faculty and staff to ensure equal access

Goals for Students:

- Become effective self-advocates, independent and self-sufficient
- Build self-awareness, self-esteem, and self-identity
- Work through personal obstacles and obtain academic success

[Services and Accommodations for all Students with Disabilities](#)

[Links to an external site.](#)

- Liaison with instructors
- Assistance with registration
- Advisement (Advisement Services)
- Tutoring (Student Support Services, Student Success Center)
- Sign Language Interpreter Request
- Equipment Loan

- Technology
- Note Taking
- Testing
- **PLEASE See the link above for how to request Accommodations and to see what Accommodations can be provided along with the timeframe for each request**
 - Students must self-identify with AccessABILITY Resource Services and submit documentation on the disability/(ies).
 - To request accommodations for the first time, students must submit a Public Accommodation Request and meet with the ARS coordinator, located on the second floor of the 3C building, at 928.344.7674 (V). Appointments may be conducted in person, via Zoom, or by phone.
 - Be prepared to speak to the ARS Coordinator about their disability and the barriers they feel they may encounter in the classroom, as well as, accommodations or design modifications needed to ensure equal access.
 - The ARS Coordinator works with students to determine which design modifications or accommodations are appropriate for each class.
 - We encourage all students to contact instructors two weeks before the start of classes to discuss accommodations and success strategies for the semester. This not only gives the instructor time to consider the changes that will be needed to ensure access to materials, but also breaks the ice and encourages more effective communication.

[Services Not Provided](#)

[Links to an external site.](#)

- [Links to an external site.](#)
- Transportation Services: ARS does NOT provide transportation to a campus/center, or transportation from one class to another.
- Personal Aides: ARS does not provide “personal aides” for students. Students needing personal assistants for activities such as getting in and out of wheelchairs, providing cleaning, and attendant service, should be advised that they need to make personal arrangements for such services.
- Diagnostic Evaluations: As a matter of policy, AWC and ARS will not provide or pay for diagnostic evaluations and documentation which support student accommodations. It is the responsibility of the student to provide such

documentation to ARS prior to receiving any services. These services are available through other community services and governmental agencies.



Community Health Associates

Strengthening Families, Empowering Communities

Community Health Associates Mission Statement: We believe it is every consumer's right to receive care in the least restrictive setting, to live independently when possible, to be employed and to be educated. Our staff are committed to helping consumers fully exercise their rights, and learn how to use local resources, and systems of care, to meet individual and family needs. We also believe each of our clients and consumers must have decision-making authority and "choice" regarding their care.

Mary Gonzalez / Information Liaison/Director of Special Projects / Email:
mgonzales@chaarizona.com

2851 S. Ave. B Building 11 Yuma, AZ 85364

Office: (928) 376-0026

[Services](#)

[Links to an external site.](#)

- Outpatient Psychiatric Health
 - Telehealth Services
 - Diagnosis
 - Transportation
 - Assessment
 - Medication Management
 - Pharmacy Coordination
 - Primary Care Coordination
 - Behavioral Health Coordination
 - Education
- Physical Health
 - Prevention/Chronic Disease Management
 - Cancer Screenings
 - Immunizations

- Diabetes Prevention/Management
- Labs
- Physical Exams
- Family Planning
- Transportation
- Primary Care Services
- Behavioral Health
 - Crisis Services
 - Health Promotion
 - Case Management
 - Peer Support
 - Community Resources
 - Individual Counseling
 - Marriage/Family Counseling
 - Substance Use Treatment
 - DUI Treatment (site specific)



[Easterseals Blake Foundation](#)

Easterseals' Mission: Easterseals is leading the way to full equity, inclusion, and access through life-changing disability and community services. Together, we're empowering people with disabilities, families and communities to be full and equal participants in society.

Our Vision: Easterseals Blake Foundation is dedicated to the vision of a Southern Arizona community where all people live healthy, productive, and independent lives. We serve more than 30,000 individuals and families across 10 counties. By providing disability, mental health and child welfare services we make profound, positive differences in people's lives every day!

Rocio Beltran, Southwestern Region Clinical Manager / Email:
rbeltran@blake.easterseals.com

Office: (928) 276-9225


Yuma and La Paz Counties Main Office
3860 W 24th St, Yuma, AZ 85364

[Programs](#)

[Links to an external site.](#)

- LIVE
 - [Behavioral Health Services](#)
 - [Links to an external site.](#)
 -
 - [Family Support Programs](#)
 - [Links to an external site.](#)
 -
- LEARN

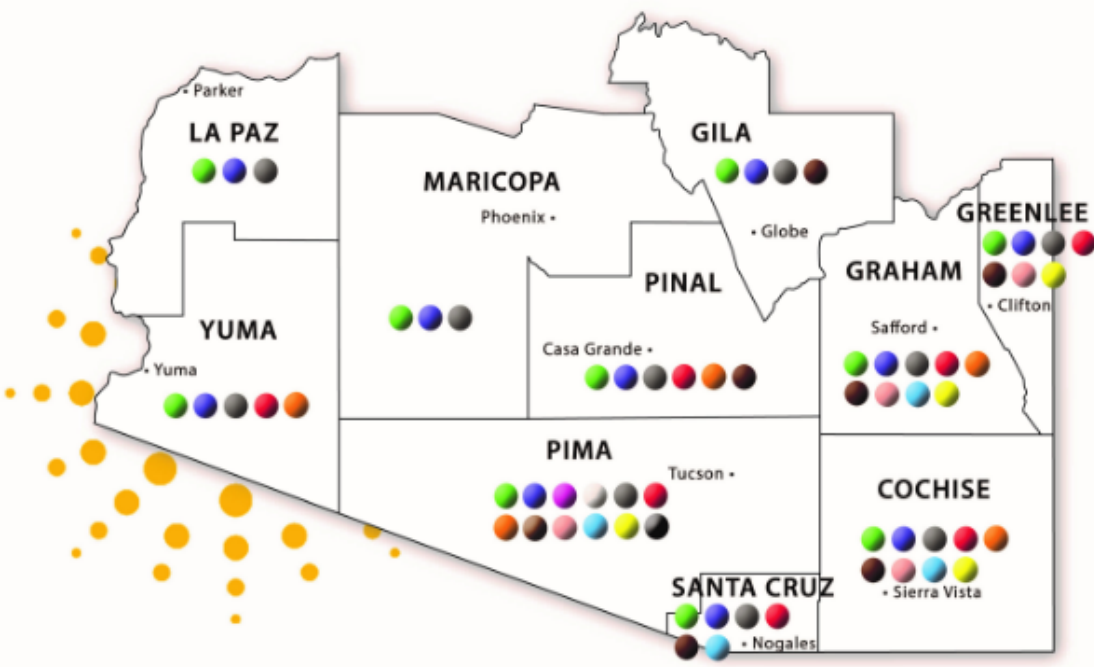
- [Parent Education Groups](#)
- [Links to an external site.](#)
-
- [Resources- Behavioral Health](#)
- [Links to an external site.](#)
-
- [Resources- Special Needs](#)
- [Links to an external site.](#)
-
- WORK
 - [Child Care Provider Professional Development](#)
 - [Links to an external site.](#)



easterseals
Blake Foundation

Services offered in Southern Arizona by county

Easterseals Blake Foundation is dedicated to the vision of a Southern Arizona community where all people live healthy, productive and independent lives.



The map displays the following counties and their service availability (indicated by colored dots):

- LA PAZ** (Parker): 3 dots (green, blue, grey)
- MARICOPA** (Phoenix): 3 dots (green, blue, grey)
- GILA** (Globe): 4 dots (green, blue, grey, black)
- PINAL** (Casa Grande): 6 dots (green, blue, grey, red, orange, black)
- YUMA** (Yuma): 5 dots (green, blue, grey, red, orange)
- GRAHAM** (Safford): 7 dots (green, blue, grey, red, orange, pink, yellow)
- GREENLEE** (Clifton): 8 dots (green, blue, grey, red, orange, pink, yellow, black)
- PIMA** (Tucson): 10 dots (green, blue, purple, grey, red, orange, pink, yellow, black, white)
- COCHISE** (Sierra Vista): 7 dots (green, blue, grey, red, orange, pink, yellow)
- SANTA CRUZ** (Nogales): 4 dots (green, blue, grey, red)



- Outpatient care coordination and therapy for infants, children, families and adults
- Comprehensive psychiatric and medication services
- Therapeutic residential treatment for youth and adults with complex behavioral health needs
- Semi-independent living for adults with serious mental illness
- Family preservation, reunification support and education



- Family support and education, including preservation and reunification
- Inclusive early childhood education
- Professional Development for child care professionals



- Transportation services for individuals who are elderly or have intellectual or physical disabilities



- Residential and rehabilitative services for adults with intellectual or physical disabilities
- Job development, coaching and employment support for teens and adults with intellectual or physical disabilities
- Supportive day programs and in-home support for adults with intellectual or physical disabilities



[Elite Vocational and Tutoring Services](#)

[Links to an external site.](#)

Elite's Mission: Our mission is to assist individuals in the areas of vocation, education, and daily life skills, promoting independence and opportunity in all aspects of life.

Tara Guerrero, Vocational & Tutoring Coordinator / Email: tara@evtsaz.com

Office: (928) 783-4059

[Services](#)

[Links to an external site.](#)

- [Tutoring](#)
- [Links to an external site.](#)
-
- [FREE Pre-Employment Transition Service Workshops for Eligible Students](#)
- [Links to an external site.](#)
-
- [Job Development and Retention](#)
- [Links to an external site.](#)
-
- [Work Adjustment Training](#)
- [Links to an external site.](#)
-
- [Job Training—Clerical Technology](#)
- [Links to an external site.](#)
-
- [Rehabilitation Instructional Services](#)
- [Links to an external site.](#)
-

- [Career Exploration](#)
- [Links to an external site.](#)
-
- [Supported Education](#)
- [Links to an external site.](#)
-
- [Basic Vocational Assessments](#)
- [Links to an external site.](#)
-
- [Trial Work Experience](#)
- [Links to an external site.](#)
-
- [Extended Supported Employment](#)
- [Links to an external site.](#)
-
- [All Services](#)
- [Links to an external site.](#)
-



[Family Partners](#)

[Links to an external site.](#)

Family Partner's Mission: "Family Partners is committed to inspiring people with developmental disabilities to reach their full potential by encouraging meaningful life experiences. We achieve this mission by supporting community inclusion and opportunities for personal choice."

Dana Bash, Associate Executive Director / Email: danab@familypartners.net

Alberto, Sepulveda, Day Program Director / Email: albertos@familypartner.net

Office: (928) 783-3858

[Services](#)

[Links to an external site.](#)

- Day Program
- Home and Community-based services: Habilitation, Respite, and Attendant Care
- Transitional Resources
- Supported Employment



Goodwill Career Center

Goodwill Career Center Mission: Empowering Individuals, Strengthening Families, and Building Stronger Communities.

Goodwill of Central and Northern Arizona is a 501(c)(3) non-profit organization dedicated to ending poverty through the power of work. Goodwill takes a holistic approach to employment by providing job seekers the tools to feel confident, purpose driven, and successful. Goodwill empowers individuals, strengthens families, and builds stronger communities.

Edna Cordova, Manager, Mission Advancement / Email: Edna.Cordova@goodwillaz.org

Office: (928) 343-7600

Link that will need to be used by all YUHSD when logging into My Career Advisor:

<https://gwl-az.org/YUHSD>

[Links to an external site.](#)

The custom flyer with QR Code Below

MY CAREER ADVISOR

POWERED BY GOODWILL

ONLINE NO-COST CAREER DEVELOPMENT, TRAINING AND COMMUNITY RESOURCES



GET ACCESS TO:



Resume & Cover
Letter Builder
Resume Feedback



Certification Backed
Computer Training for
Microsoft Programs



Skills Training
Courses & Local
Job Postings



Live Chat with a
Career Services
Representative

ACTIVATE YOUR FREE ACCOUNT TODAY

[MyCareerAdvisor.com](https://www.mycareeradvisor.com)

To connect with Goodwill as a community partner, contact us at 1-888-355-1444.

[MyCareerAdvisor.com](https://www.mycareeradvisor.com) is powered by Goodwill of Central and Northern Arizona, a 501c3 non-profit organization dedicated to supporting the career development needs of local job seekers.



GOODWILL 9

<https://gwi-az.org/YUHSD>

Services

Links to an external site.

~ Career Center Services~

- No cost resources
- On-site Career Coaches
- Job leads
- Job searching
- Career guidance and coaching
- Career Success Planning
- Mock interviewing
- Professional resume development
- Digital Literacy / Basic Computer Classes
- Webinars
- Job Readiness Workshops
- Essential Skills Training
- Financial Literacy Training

Community Resources

Links to an external site.

- Education & Training
 - Adult Education, Language & Literacy, and Life Skills Resources
- Family & Community
 - Community Involvement, Network Support, Family Relations, Childcare, and Child Education Resources
- Financial & Legal
 - Employment, Income, Legal, and Credit Resources
- Food, Housing & Transportation
 - Food, Housing, and Transportation Resources
- Health & Well-Being
 - Healthcare Coverage
 - Disabilities & Physical Health
 - Mental Health
 - Substance Use
 - Safety
- Veteran Services
 - Veteran Specific Resources
 - Transition Assistance Programs
 - Veteran Education Benefits

- Resources Fairs
 - Be introduced directly to our partners
 - Solve many needs in one place
 - Learn about Resources in your community

[Yuma Region Resource Connection Guide](#)

[Links to an external site.](#)



[Horizon Health and Wellness](#)

[Links to an external site.](#)

Horizon's Mission: To provide integrated health care that addresses the whole person and promotes wellness using best practices to enhance the quality of life of the individuals, families, and communities we serve.

Kristin Parrish, Clinical Coordinator / Email: kristin.parrish@hwwaz.org

Office: (928) 331-7937

1185 S. Redondo Center Drive

Yuma, AZ 85365

[Services](#)

[Links to an external site.](#)

- Family Medicine/Primary Care
- Behavioral Health
- Substance Use Services
- COVID-19
- Children's Services
- Crisis Services
- Domestic Violence Services
- Group Therapy
- Intellectual/Developmental Disabilities Services
- Inpatient Behavioral Health
- Lab Services
- Observation Unit (Adult)
- Outpatient Behavioral Health
- Pharmacy
- Psychiatric Services
- Residential
- Supported Employment
- Supportive Housing
- Telemedicine



[KEYS \(TRIO\) Program](#)

[Links to an external site.](#)

TRIO KEYS Program Mission: The mission of the TRIO KEYS Program is to strengthen and transform each student's Academic, Cultural, and Social Skills needed to complete post-secondary education.

A Message to Our Students

Often it takes only a little extra help to make your college experience more successful. The KEYS staff can help you identify new ways to get the most out of your classes or improve your current study habits. We can also assist students in identifying opportunities and resources available at AWC, in the community, and at other colleges and universities that will aid you in meeting educational and career goals.

Office: (928) 344-7761

Email: keys@azwestern.edu

Hours: Monday-Thursday: 7:00am - 5:00pm

[Application To Apply for KEYS Program](#)

[Links to an external site.](#)

Services

- **Academic & Career Advising**
 - Program participants receive individualized academic assistance from KEYS Academic Success Advisors in various areas of need. These areas include: Educational planning and guidance, transfer assistance, and career exploration.
- **Transfer Services**
 - Individualized activities designed to assist KEYS program participants in applying for admissions to and obtaining financial assistance for enrollment in a four-year program of post-secondary education.
- **Academic Support**
 - The KEYS Program provides an array of academic support services to meet the specific needs of its participants. These services include: One on one (1:1) tutoring, group study sessions, peer mentoring and coaching.
- **Financial Aid & Scholarship Assistance**
 - The KEYS Program provides information to its participants on the full range of federal student financial aid programs and benefits (i.e. Pell Grant, Student Loans...etc.). Participants are also assisted in completing the FAFSA online and locating resources for private and public scholarships.
- **Financial Literacy**
 - KEYS Program provides financial literacy education to increase the participants' knowledge and awareness of financial and economic factors that can impact their educational and personal lives.
- **Cultural Enrichment**

- The KEYS Program provides participants the opportunity to experience a variety of cultural events and academic programs meant to expand their cultural perspective.
- **Leadership & Student Engagement**
 - The KEYS Program's SOTE & KSAC participant clubs encourage the development of leadership through social integration, service learning and campus engagement.
- **Grant Aid Awards**
 - The KEYS Program offers a limited number of monetary awards to eligible participants each year. These awards are distributed based on eligibility criteria and program participation.



MIKID improves the behavioral health and wellness of children and youth through a family-centered approach.

MIKID

[Links to an external site.](#)

MIKID's Mission: MIKID improves the behavioral health and wellness of children and youth through a family-centered approach.

Stephen McClanahan, Transitional Age Youth Program Coordinator / Email:
stephenm@mikid.org

Services

[Links to an external site.](#)

- Family Support
- Youth Services
- Suicide Prevention
- Training Programs
- Transition Age Youth Program
 - Peer & Family Support
 - Youth Peer Support Training
 - Build Supportive Relationships
 - Pre-Job Employment
 - Educational Training Support
 - Economic Challenges Support
 - Housing Support
 - Youth Leadership Training & Groups
 - Health & Wellness



[Our Choice Human Services](#)

[Links to an external site.](#)

Our Choice Human Services Mission Statement: With trust and integrity Our Choice Human Services will strive to empower our members by providing quality services, encouraging our member's right to make their own choices, and aide in creating meaningful community relationships.

Omar Carballido, HCBS Coordinator / Email: omar.carballido@ochslife.com

Office: (928) 294-1093

[Services](#)

[Links to an external site.](#)

- Group Homes
- Day Programs
- HCBS (Home and Community Based Services) & Respite Care
- Adult Development Home
- Individual Designed Living Arrangements



[Pre-Employment Services \(Pre-ETS\)](#)

The Rehabilitation Services Administration Vocational Rehabilitation (VR) program is offering Pre-Employment Transition Services (Pre-ETS) to students with disabilities statewide.

School is back in session, but for many students with disabilities, this rite of passage can feel overwhelming. The Department of Economic Security (DES) [VR program](#)

[Links to an external site.](#)

offers services designed to help students with disabilities flourish in the classroom and achieve post-academic success in the workforce. VR's [Pre-ETS](#)

[Links to an external site.](#)

are tailored to prepare students ages 14-22 for future employment in five strategic ways.

What Are Pre-ETS?

Pre-ETS are specific career exploration and job readiness services that help students with disabilities prepare for future employment. Pre-ETS are provided via workshops that are short in duration and related to the following topic areas:

1. Job Exploration: allows students to identify careers of interest, assess skills and abilities and learn about potential vocations from expert speakers. Students are also presented with labor market information so they can identify if jobs in which they have an interest are in-demand and available where they live.

2. Work Readiness: helps students prepare for employment by helping them create a resume, practice job interview techniques, learn how to manage money, and develop the soft skills employers seek including non-verbal communication, conflict resolution, and professionalism.

3. Post-Secondary Education/Training Counseling: gives high school students the opportunity to explore post-secondary educational and vocational options. Students can also receive help with researching available scholarships and applying for federal student aid, and learn how to access accommodations through a school's disability resource center.

4. Work-Based Learning: helps students explore career options through on-the-job experiences including volunteer work, internships, job shadowing, and apprenticeships. This can be particularly useful for students who have multiple career interests as it provides them with first-hand experience of the job.

5. Self-Advocacy Skills: empowers students with disabilities to advocate for themselves in the workplace by teaching them their rights and how to request the accommodations they require. This service helps students understand their abilities and how their disability may affect them at work.

Who Can Receive Pre-ETS?

'Students with disabilities' can receive Pre-ETS. Here in Arizona, a 'student with a disability' is an individual who is between 14-22 years of age, participating in an educational program (e.g. public, private or charter schools, home school, vocational programs, college, GED programs, etc.), and has a documented disability (this includes students who qualify for a 504 plan or who have an Individualized Education Plan or IEP). It is important to note that these students do not have to apply for VR services or be clients of the VR program.

Students with disabilities may also be eligible for additional VR services including [mobility equipment to aid in the student's movement](#)

[Links to an external site.](#)

, [tools to help make learning materials accessible](#)

[Links to an external site.](#)

, assistive technology, and more.

For more information about Pre-ETS services for students, please visit the [Pre-Employment Transition Services webpage](#)

[Links to an external site.](#)



[Raising Special Kids](#)

[Links to an external site.](#)

Raising Special Kids Mission: "To ensure families of children who have disabilities and special health care needs have the support, information, training, and hope they need to raise their child to reach their highest potential."

Gloria Demara / Email: gloriav@raisingspecialkids.org

Office: (928) 444-8803

[Programs & Services](#)

[Links to an external site.](#)

- Individual Consultation
- Parent-to-Parent Support
- Events & Training
- Refugee and Asylee Mentorship Program
- NICU Parent Support
- Positive Family Coaching
- Serving Military Families



[Resilient Health](#)

[Links to an external site.](#)

Some companies have a mission. Others have a vision. We have a purpose: to unleash the power of our employees and participants to create a resilient world, one person at a time.

Patricia Quiroz, Clinical Manager / Email: Patricia.Quiroz@rhaz.org

Jennifer Cohan, Relationship Specialist / Email: jennifer.cohan@rhaz.org

Office: (928) 344-3870

[Services](#)

[Links to an external site.](#)

- Counseling
- Therapeutic arts/art therapy
- First Episode Psychosis Services
- Eye Movement Desensitization and Reprocessing (EMDR)
- Flex Care + Permanent Supportive Housing Services
- Respite
- Trauma services for youth and adults
- Psychiatric Services Medication Assisted Treatment (MAT)
- Somatic Experiencing
- Primary Care Services



[RISE Services, Inc.](#)

[Links to an external site.](#)

RISE Mission: Creating opportunities for and with people. Since 1988, RISE has been changing lives with quality services and programs for individuals and families.

Josie Ramirez, Regional Director / Email: josier@riservicesinc.org

Office: (928) 783-8771

[Services](#)

[Links to an external site.](#)

- Day Service Program
- Employment Services for Adults
 - Job-Based Training
 - Supported Employment
 - Training and Coaching
 - Life Skills Restoration
- Family Services
 - Family Support
 - Foster Care and Adoption
- Residential Services
 - In-Home Care
 - Residential Homes
 - Independent Living Homes
- Children's Services
 - Early Intervention
 - Therapy for Developmental Disabilities



[Saguaro Foundation](#)

[Links to an external site.](#)

Saguaro's Mission: "The Saguaro Foundation serves both children and adults who have disabilities, and the behavioral health community by promoting general well-being, enhancing quality of life and actively protecting their rights while establishing a strong, financial base."

Sergio Castro, Day Program / Email: scastro@saguarofoundation.org

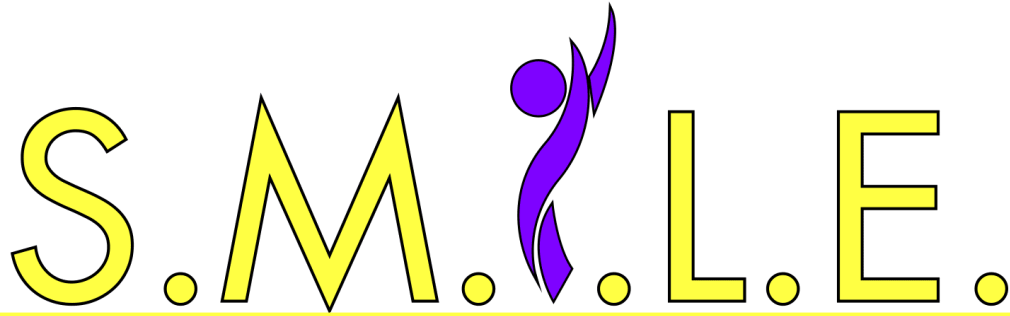
Office: 928-783-6069

Day Program: 928-627-7299

[Services](#)

[Links to an external site.](#)

- DDD Residential Services
- Transportation
- Day Programs
- Home and Community-Based Services: Habilitation, Respite, and Attendant Care
- Behavioral Health Residential Services



SERVICES MAXIMIZING INDEPENDENT LIVING AND EMPOWERMENT

Empowering Individuals with Disabilities to Maximize Independence

SMILE

[Links to an external site.](#)

SMILE's Mission: "Empowering Individuals With Disabilities to Maximize Independence!"

Bert Rios, Director / Email: bert@smile-az.org

Berenice Canada /Office

Miguel Flores /Outreach Coordinator

Raul /Help with Guardianship and SSI Benefits

Office Number: 928-329-6681

Services

[Links to an external site.](#)

- Individual and Systems Advocacy
- Blind Services
- Information and Referral
- Independent Living Skills
- Peer Counseling
- Lost Peepers
- Transition Services
- Legal Guardianship
- Adult SSI Benefits



Special Olympics

[Special Olympics](#)

[Links to an external site.](#)

Special Olympics' Mission: The mission of Special Olympics is to provide year-round sports training and athletic competition in a variety of Olympic-type sports for children and adults with intellectual disabilities, giving them continuing opportunities to develop physical fitness, demonstrate courage, experience joy and participate in a sharing of gifts, skills and friendship with their families, other Special Olympics athletes and the community.

Lisa Ball / Area Director

Direct: 928.210.8862

3250-A East 40th Street, Yuma AZ 85365

Lisa@SpecialOlympicsArizona.org

Mary Nielsen / Email: nielsenmary6324@gmail.com

FALL Sports

- Swimming, Softball, Bocce, Golf, Bowling

WINTER Sports

- Soccer, Basketball, Cheerleading

SPRING Sports

- Athletics, Powerlifting, Tennis



[Vocational Rehabilitation \(VR\)](#)

[Links to an external site.](#)

[VR & DDD Partnership VIDEO](#)

[Links to an external site.](#)

What is the Vocational Rehabilitation (VR) Program?

Vocational Rehabilitation (VR) is a work program that helps individuals with disabilities, with the ultimate goal to prepare for, enter into, and/or retain employment.

What does VR Do?

Based on individual needs and informed choice, eligible individuals may receive the following types of services:

- Vocational counseling and help in creating a job goal
- Evaluations to determine job skills and interests
- Assistance with training or education, if needed to obtain a job
- Help with job interview skills
- Special equipment or technology that is needed for the job
- Assistance with getting to Training, services, or job sites and other work-related needs

Benefits of Working

Financial Independence, sense of purpose, connection to the community, social and professional networking, and reducing stigma

Am I eligible for the VR Program?

You may be eligible for VR services if you meet all of the following requirements:

1. You have a documented physical or mental impairment;
2. Your disability is a barrier to employment;
3. You require VR services in order to prepare for, secure, retain, or regain employment; and

4. You can benefit from VR services to achieve employment.

Eligibility is determined within 60 days of a signed application.

How do I apply for the VR Program?

Call or visit a VR office near you and inquire about services or set up an appointment. VR staff will collect personal information from you and complete an RSA Referral form on your behalf. Or reach out to the Transition Specialist, Sarah Figueroa, and she can fill out the form for you and turn it into VR.

or complete one of the following referral forms and submit it to RSA by emailing azrsa@azdes.gov.

[Links to an external site.](#)

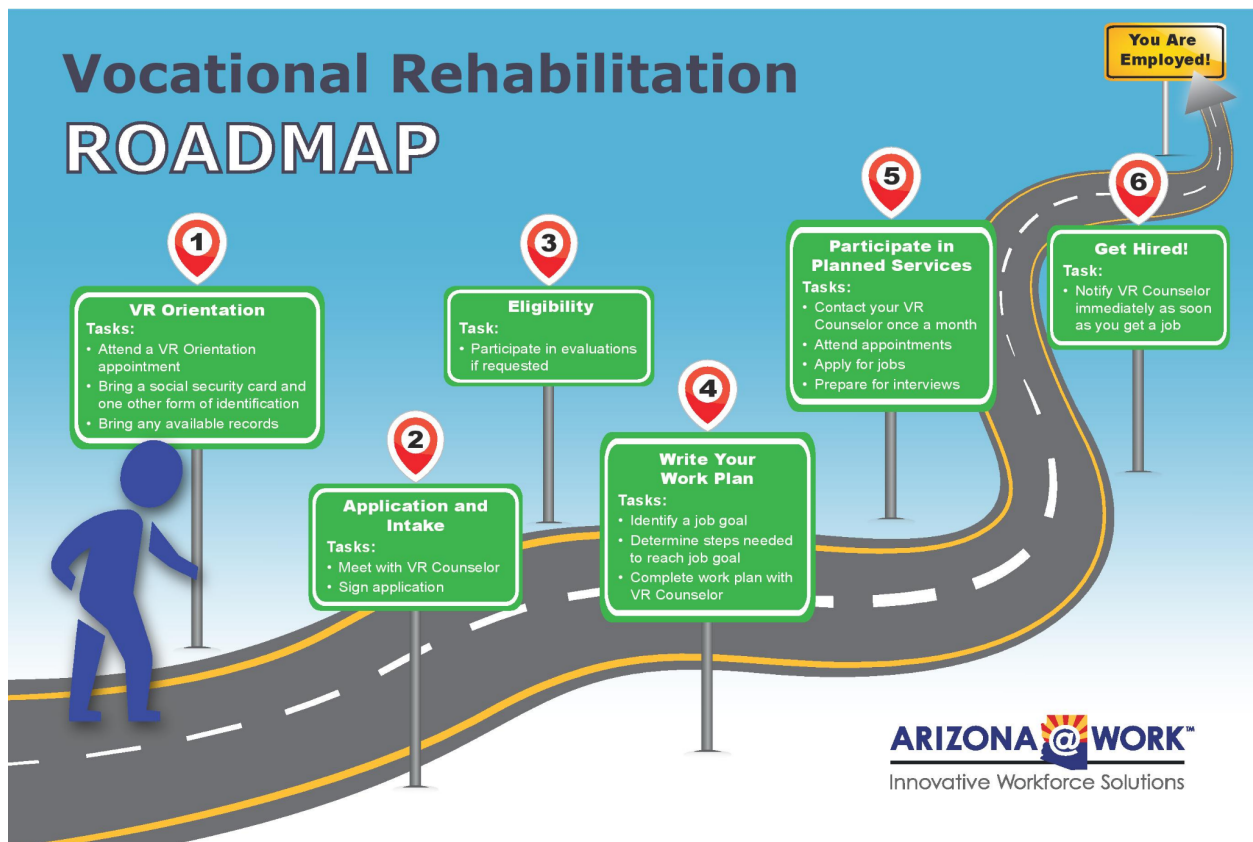
[Referral Form \(Fillable\)](#)

[Links to an external site.](#)

[Referral Form \(Large Print\)](#)

[Links to an external site.](#)

Please see right below for VR Roadmap



Vocational Rehabilitation Roadmap

[Links to an external site.](#)

1. VR Orientation

- Tasks
 - Attend a VR orientation appointment
 - Bring a social security card and one other form of identification
 - Bring any available records

2. Application and Intake

- Tasks:
 - Meet with VR Counselor
 - Sign application

3. Eligibility

- Task:
 - Participate in evaluations if requested

4. Write Your Work Plan

- Tasks:
 - Identify a job goal
 - Determine steps needed to reach job goal
 - Complete work plan with VR Counselor

5. Participate in Planned Services

- Tasks:
 - Contact your VR Counselor once a month
 - Attend appointments
 - Apply for jobs
 - Prepare for interviews

6. Get Hired!

- Task:
 - Notify VR Counselor immediately as soon as you get a job

You are Employed!



WORKABILITY

[Workability: Putting Abilities to Work](#)

[Links to an external site.](#)

WorkAbility is an individualized and supportive employment program owned and operated by UCP of Southern Arizona (UCPSA) a non-profit organization dedicated to teaching and preparing people with disabilities for competitive, integrated, and sustainable work opportunities in southern Arizona.

Brandi Kitzberger, Curriculum Services Program Manager / Email:
bkitzberger@ucpsa.org

Silvia Chavez, Employment Services Coordinator / Email: schavez@ucpsa.org

Office: (928) 259-7700

[Services](#)

[Links to an external site.](#)

- Rehabilitation Instructional Services
- Pre-Employment Transition Services
- Job Development/Coaching
- Supported Education
- Starting Line for Employment Classes
- Summer Program



[Arizona Department of Economic Security \(DES\)Links to an external site.](#)

[Division of Developmental Disabilities \(DDD\)Links to an external site.](#)

[VR & DDD Partnership VIDEO Links to an external site.](#)

[APPLICATION FOR DDD ELIGIBILITY DETERMINATION: Links to an external site.](#)

DDD's Mission: The Division of Developmental Disabilities empowers individuals with developmental disabilities to lead self-directed, healthy and meaningful lives. DDD provides supports and services for eligible Arizonans. DDD provides supports and services to individuals diagnosed with one of the following developmental disabilities:

- Autism;
- Cerebral palsy;
- Epilepsy;
- Cognitive / Intellectual Disability;
- Down Syndrome; or
- Are under the age of six and at risk of having a Developmental Disability

DDD serves more than 40,000 people with developmental disabilities and their families throughout Arizona each year.

[Supports and ServicesLinks to an external site.](#)

The Division provides supports and services based upon need, state and/or federal guidelines, member eligibility and the availability of funds. Most services to children and adults with developmental disabilities are delivered at home and in community-based settings.

- Support Coordination (Case Management)
 - Support Coordinators facilitate a person-centered approach to maximize member and family self-determination, while promoting the values of dignity, independence, individuality, privacy, and choice.
- Additional Services & Supports
 - Behavioral Health Services
 - Day Support Services
 - Employment Services

- Home Health Aide
- Home Modifications
- Home Nursing
- Housing Opportunities
- In-Home Support Services
- Medallion Program
- Medical Insurance and Services
- Residential Support Services
- Respiratory Therapy
- Therapies (Occupational, Physical, and Speech)
- Transportation (Medically Necessary, Non-Emergency)