

# BRYN MAWR NEWS

school

DECEMBER  
2024

## From the Principal



Dear Students and Families,

I learned something new today. December begins on the same day of the week as September every year. It's because their first days are exactly 13 weeks (91 days) apart. And December ends on the same day of the week as April every year, because their last days are exactly 35 weeks (245 days) apart.

I've been around more than 40 years, and I have known how to read a calendar for most of that time, AND I did not know these simple facts. It makes me wonder what other things we don't know about. What do we really know about the people around us that we interact with every day. Sure, we know that Mr. Morgan is tall, and Ms. Moniqua knows what to do with a nosebleed. But we don't know what challenges everyone is working with or what

unknown situations might be adding to someone's stress.

As we enter into the cold and darker months of the year, I am going to concentrate on showing grace and patience to those around me. While we all feel the cold and count the days until the sun returns, I am not going to assume to know why someone is acting the way they are. I am going to be curious and ask questions, and try to do my best. And I promise to try to see everyone I meet as a person working hard to do their best. Then we can learn more about one another and maybe become a brighter part of their day.

Sincerely,  
*Kevin Oldenburg*  
Principal

## Severe Weather Guidance Updated

For the 2024-25 school year, schools will close in the event of severe weather, but e-learning days will only be implemented if needed to meet [state-required instructional hours](#). The following guidelines apply for when e-learning will be used:

### For Elementary Grades

E-learning days begin after three weather-related or other cancellations

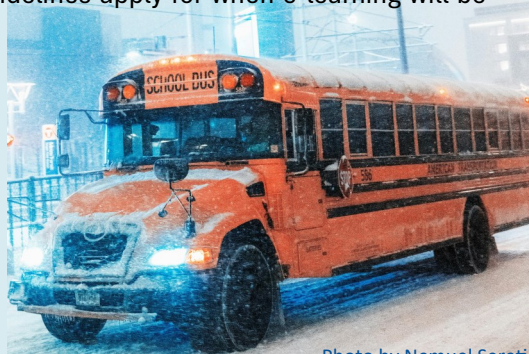


Photo by Nemuel Sereti

## IN THIS ISSUE:

- From the Principal
- Severe Weather Guidance
- Talent Showcase News
- Caregiver Connections Feature
- New Staff Spotlight
- Library News
- HELPme APP Info
- Native American Event Review

## DECEMBER 2024

S	M	T	W	TH	F	S
1	2	3	4	5	6	7
8	9	10	11	12	13	14
15	16	17	1	19	20	21
22	23	24	25	26	27	28
29	30	31				

- 5 Talent Showcase Auditions
- 13 Teacher Work Day - **NO SCHOOL**
- 19 Talent Showcase Performance
- 20 School Wide Bingo
- 23 - 31 Winter Break - **NO SCHOOL**





*Bridging School to Home*

We were excited to continue our **Kindergarten and First Grade Caregivers Connection** sessions for Bryn Mawr families. On October 30th, families gathered for pastries and coffee and discussed grade-level math and literacy strategies for home to reinforce classroom lessons.

On November 20th, Bryn Mawr hosted our first Caregivers Connection for Families of Students with Autism event. Caregivers learned about the resources available through Empower Autism Center while the children had an opportunity to play.

Questions about the next Caregivers Connection event? Feel free to email us at:

kimberly.cook@mpls.k12.mn.us or  
regina.jackson@mpls.k12.mn.us



*The Equity & Engagement Team  
presents*

**BRYN MAWR  
TALENT SHOWCASE  
STARRING YOU!  
DECEMBER 19<sup>TH</sup>  
12:30 PM  
ANWATIN AUDITORIUM**

**MUSICIANS, SINGERS,  
DANCERS, ACTORS,  
COMEDIANS,  
MAGICIANS,  
AND MORE!**



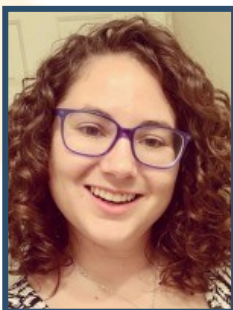
**Details and Rules**

- Open to all Bryn Mawr Students
- Participation is optional and is not based on behavior
- Acts can include 1, 2, or 3 students
- Acts should be 2 minutes maximum
- Planning and practice during recess or at home only
- Acts, dress, and music must be appropriate for school
- Acts must be rehearsed and prepared.
- Auditions will be held on December 5th. This is a low stress chance to rehearse in front of our Talent Show Committee.
- Dress rehearsal is December 17<sup>th</sup>
- Bryn Mawr students, staff, and families are invited!



**NEW STAFF  
SPOTLIGHT**

Katie Carter (K/1) has more than ten years of curriculum development experience and has taught Elementary Education in both Nevada and Minnesota. She has been a passionate advocate for equity and individualization in face-to-face and remote learning platforms.



**WELCOME KATIE!**



As we reflect on the month of **November and celebrate Native American Heritage**, Bryn Mawr Elementary is very thankful to have had a visit from author Nookomis (which means “my grandmother”) Louise Erdrich. Ms. Erdrich came and taught our students the history of the jingle dress dance. During the assembly, the children had a special opportunity to dance to Native American music.

Also, Bryn Mawr received a generous donation of children’s books from Birchbark Books & Native Arts. This couldn’t have been possible without the Abe family.

## Miigwech, thank you!

If you haven’t had an opportunity, please stop by and see the **Seven Grandfather Teachings** showcase in the hallway. The Sacred Law tell us that when we achieve the Seven Teachings, we will have “Peace”. Kudos to our students and Art Teacher Ms. Bell!



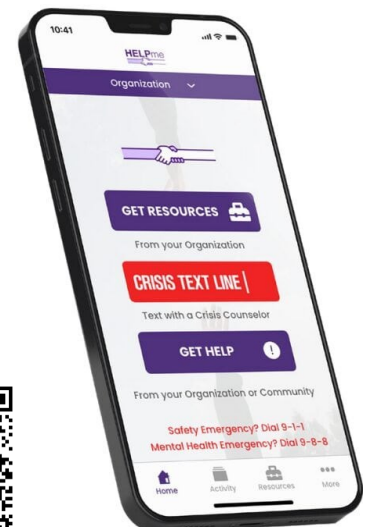
## Asking for help can sometimes be hard.

If you are struggling, please know you are not alone. We are providing our school community with a safe place to ask for and receive help. Asking for help is BRAVE and is the first step to feeling better.


### The HELPme app is available to you 24 hours a day, 7 days a week.

- Assistance with food, shelter, transportation, or domestic violence – you will be provided with links with resources who can help you.
- A video library of wellness resources on Stress & Anxiety, Bullying, Suicide Prevention, and Anger Management.
- Crisis counselors for those experiencing painful emotions
- Request help for yourself, a friend, or your family.
- Requests may remain anonymous, or you can identify yourself.

Scan the QR code for more information and to access links to download the app.



# NOVEMBER



## BULLDOGS OF THE MONTH

Noor Ammad	Samy Pilla
Ka'mille Avery-Blake	Yansapanta
Jo Baker	Musab Rage
Minerva Bestman	Legend Robinson-Harmon
Chance Boykin	Lyric Robinson-Harmon
Theallen Burston	Dereon Rodgers
Jaysua Chang	Naomi Rodgers
Kylie Chimba Aleman	Michael Rogers III
King Couyette	Jace Sanders
Mi'Layha Deleon	Zaynab Sanyang
Raina Fabunmi Klawitter	Claudia Saquic-Mcdonald
Kziah Fields	Reion Sargent
Derion Flowers	Truly Shaw
Maisie Flynn	Dezariah Smith
Tramonte Frelax	Cartier Stephens
Ahmed Gedi	Dakota Stromstad
Zy'Ann Gipson	Annalise Thao
Nakia Gordon	Iris Thompson
Zariah Gregory	Jean Leon Tipanluisa
Zion Henderson	Yusif Turay
Ari'Yah Holden	Busy Vaughan
Nia Hurckman	Nicol Vega Pallo
Z'Xyon Jeffries	Dawonne Wheeler
Bryson Johnson	Kiamond Williams
Nasiba Kahin	Nazire Winters
Guanyu Khang	Ella Worley
Oliver Knox-Reeve	Dyesebel Xiong
London Lindsey	Ian Xiong
Noah Losh	Sirena Xiong
Travis Manuel	Jade Yang
Loyal McGowan	Pearleena Yang
Shan'Ty Mcgowan	Raiden Yang
Ja'Mon McKinley	Andrew Young
Josue Medina Llumi	Valencia Yang
Asha Mohamed	Giuseppe Zadra
Mohamed Mohamed	Samantha Zeigler
Adelyn Motzko	
Kaeden "Kai" Motzko	
Jeremiah Owens	

## Counseling Corner

by Kim Cook

Along with sharing classroom activities to reinforce the concept of respecting others, I will be doing classroom lessons around respecting ourselves and protecting our personal safety with boundaries, vaping education, and digital safety.

Ideas for home reinforcement:

1. have your child trace their hand and write in 5 trusted adults, both in school and out, that they could go to if they have a problem.
2. Make sure your child has one caregiver's number memorized in case they would ever need to call and don't have a cell phone.
3. Discuss 'online safety' and your family's boundaries around social media use.

**Respect is...**



- Treating someone how you and they want to be treated
- Caring about the thoughts, feelings, beliefs, and rights of someone else

## FROM THE LIBRARY

In the library, we have been looking at books featuring Native American characters and authors. 4th and 5th graders learned how to use [Destiny Discover](#) to access the Bryn Mawr Library Catalog, including audio and ebooks. Be sure to ask your student what books they are enjoying from the Bryn Mawr library!



**Winter cardinal says...**



**"Dress warmly for cold weather!"**



## LUNCH MENUS

NOW AVAILABLE ONLINE



[brynmawr.mpschools.org/families-community/menus](https://brynmawr.mpschools.org/families-community/menus)