



School District 622

NORTH ST. PAUL | MAPLEWOOD | OAKDALE

Ready for tomorrow

Achievement Report

School Year 2023-2024

(World's Best Workforce / Comprehensive
Achievement and Civic Readiness)

Presented by Dr. Amy Luckner
Research, Evaluation, and Assessment Director

Agenda

- We are 622!
- School Attendance
- Ready for Kindergarten
- Academic Goals
- Graduation
- College and Career Readiness



School District 622

NORTH ST. PAUL | MAPLEWOOD | OAKDALE

Ready for tomorrow



School District 622

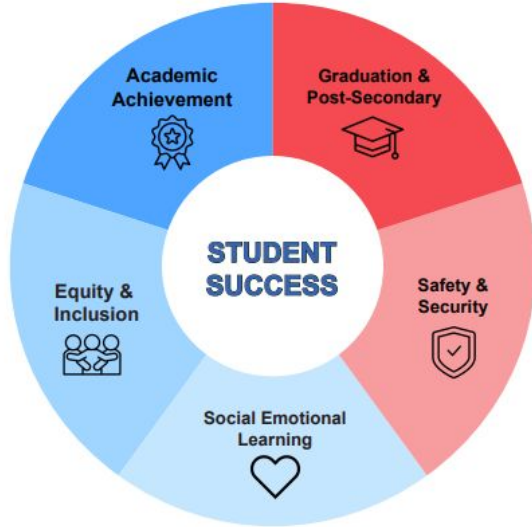
NORTH • ST. PAUL | MAPLEWOOD | OAKDALE

Ready for tomorrow

District 622 Strategic Plan 2024-2029

OUR MISSION

District 622 will inspire lifelong learners who thrive in diverse communities.



GOALS

Academic Achievement

- Students will successfully meet academic standards.

Graduation & Post-Secondary

- Students will graduate fully prepared for post-secondary success.

Safety & Security

- Students and staff will feel physically and emotionally safe at school.

Social Emotional Learning

- Students and staff will work and learn in a positive school culture that promotes personal well-being.

Equity & Inclusion

- Students, staff, and families will feel welcomed and included as valued members of our diverse school community.

Our values are the foundation of our community and guide our actions.
Inclusion • Innovation • Excellence • Growth • Collaboration • Curiosity



School District 622

NORTH ST. PAUL | MAPLEWOOD | OAKDALE

Ready for tomorrow

Process

- The World's Best Workforce (WBWF) / Comprehensive Achievement and Civic Readiness plan is developed through a collaborative process that includes 622 Teaching & Learning, 622 Research, Evaluation, & Assessment, 622 Advisory, and the 622 School Board.
 - 10/23/24: 622 Advisory
 - 11/12/24: School Board Study Session (Full Discussion)
 - 11/19/24: School Board Business Meeting (Review)
- 622 Advisory
 - School Board, administrator, teacher, student, parent, and community member representation
 - Advises district administrators and the School Board on curriculum, instruction, assessment, and World's Best Workforce Plan
 - [2024-2025 Committee List](#)



School District 622

NORTH ST. PAUL | MAPLEWOOD | OAKDALE

Ready for tomorrow

*Month	Planned Board Presentations on Student Learning
November	Achievement Report for 23-24
December	Middle School
January	High School
February	Adult Basic Education / Adult Programming
March	Elementary
April	Early Learning

Agenda

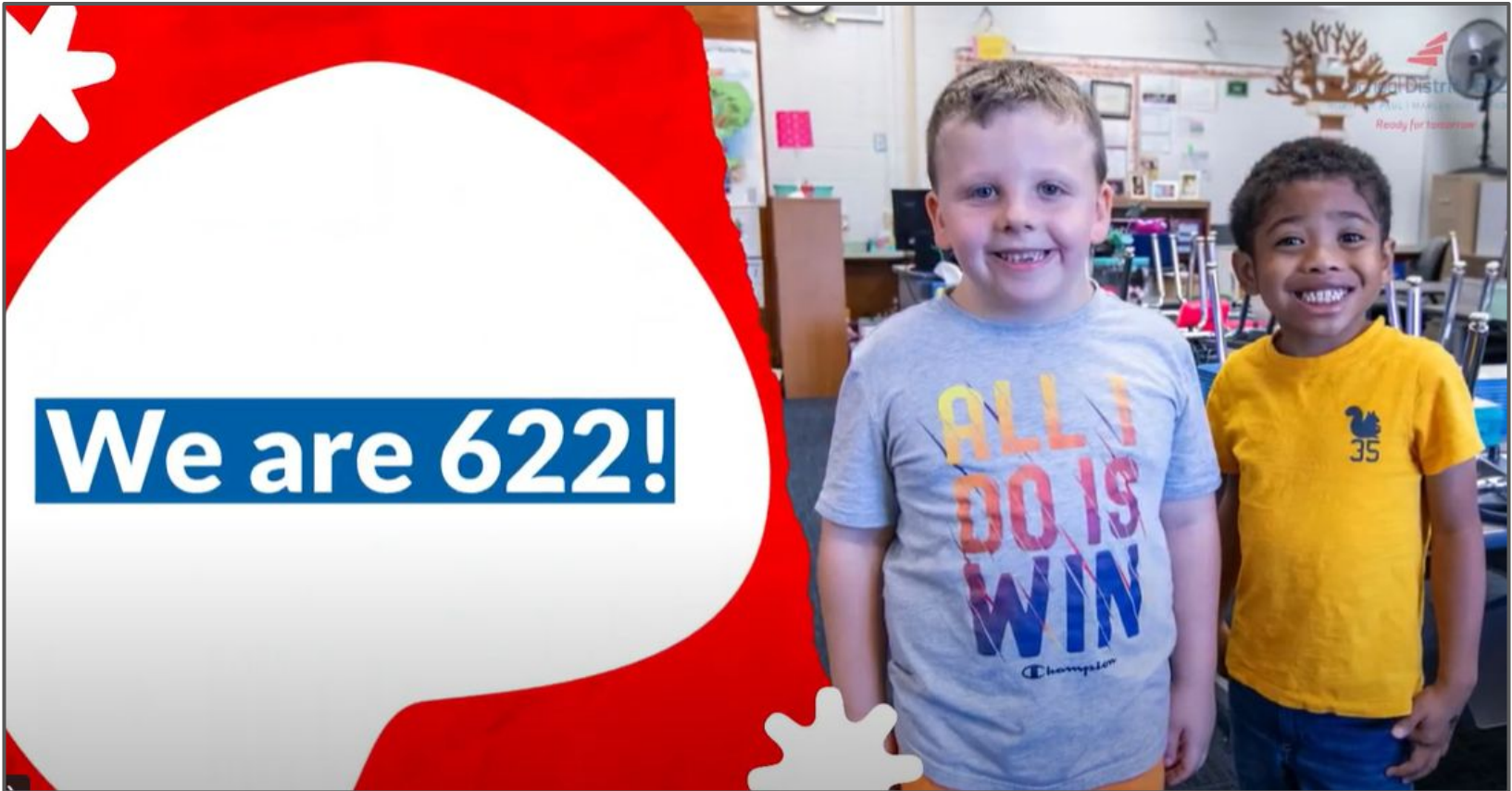
- **We are 622!**
- School Attendance
- Ready for Kindergarten
- Academic Goals
- Graduation
- College and Career Readiness



School District 622

NORTH ST. PAUL | MAPLEWOOD | OAKDALE

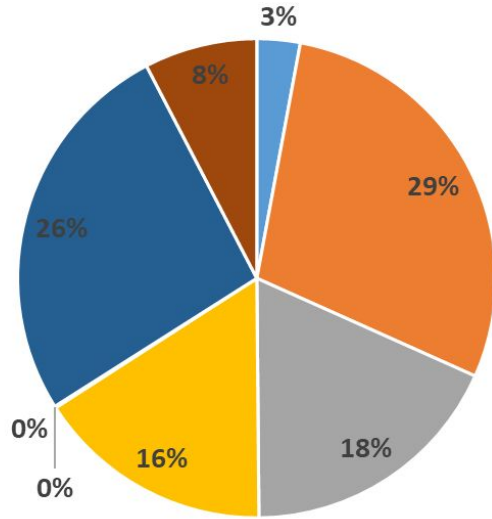
Ready for tomorrow



We are 622!

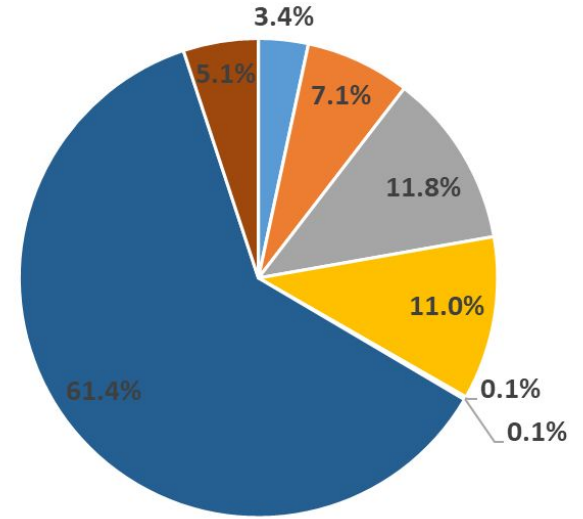
We are #622Proud!

ISD 622 Students
Total School Year 2023-2024 Enrollment: 10,633



- American Indian
- Asian
- Black or African-American
- Hispanic or Latino
- Native Hawaiian or other Pacific Islander
- Other Indigenous Peoples
- White
- Two or More Races

Minnesota Students



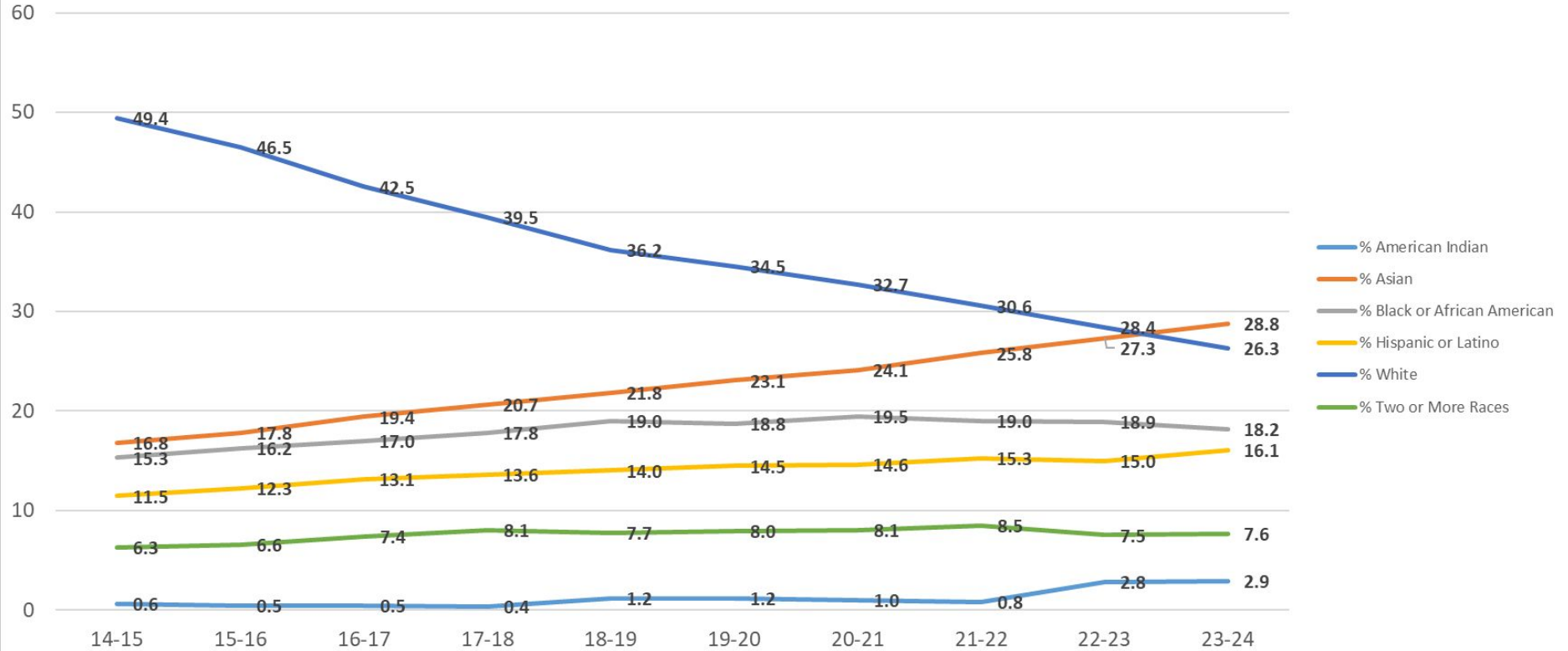
School District 622

NORTH ST. PAUL | MAPLEWOOD | OAKDALE

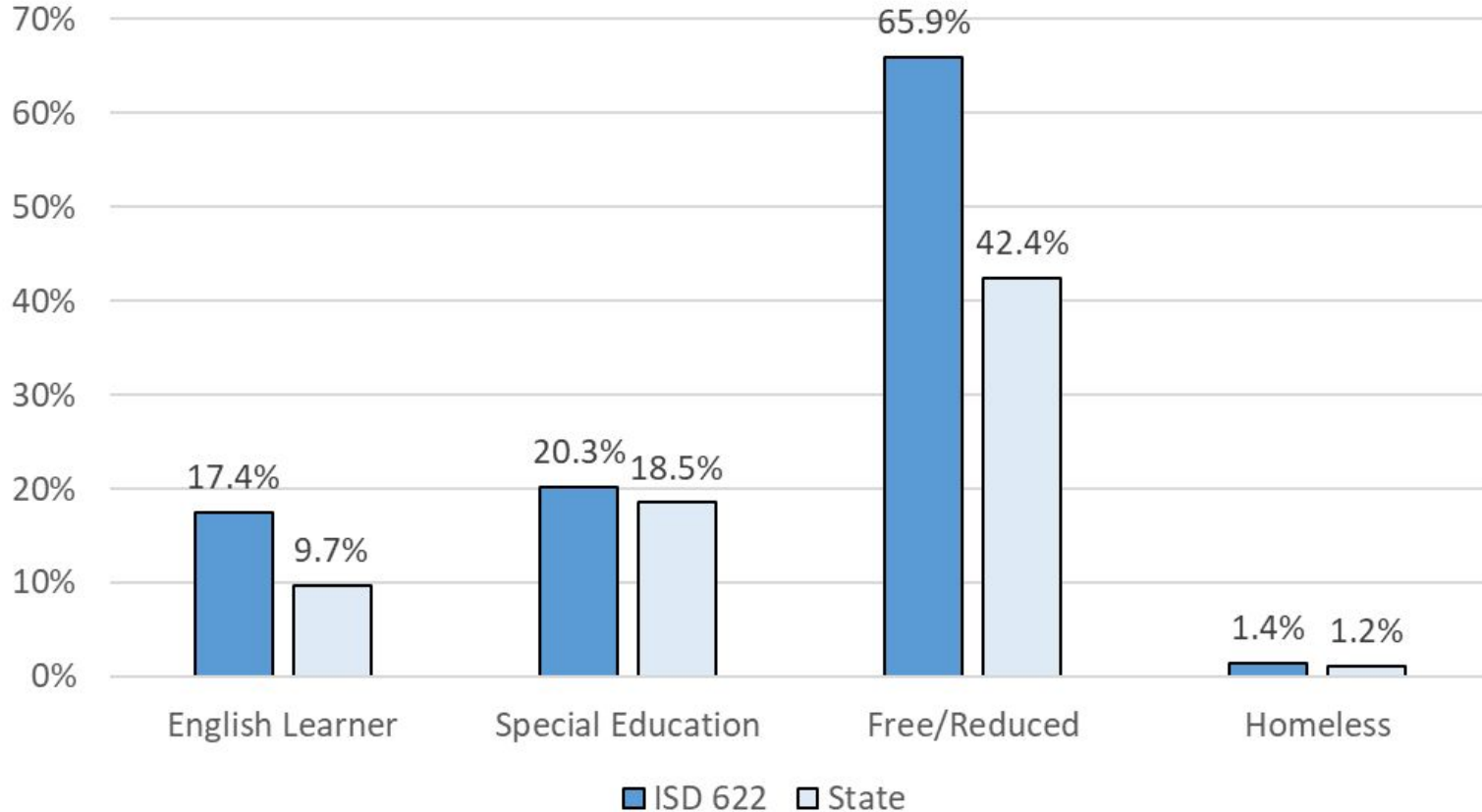
Ready for tomorrow

ISD 622 Student Demographics: Race/Ethnicity

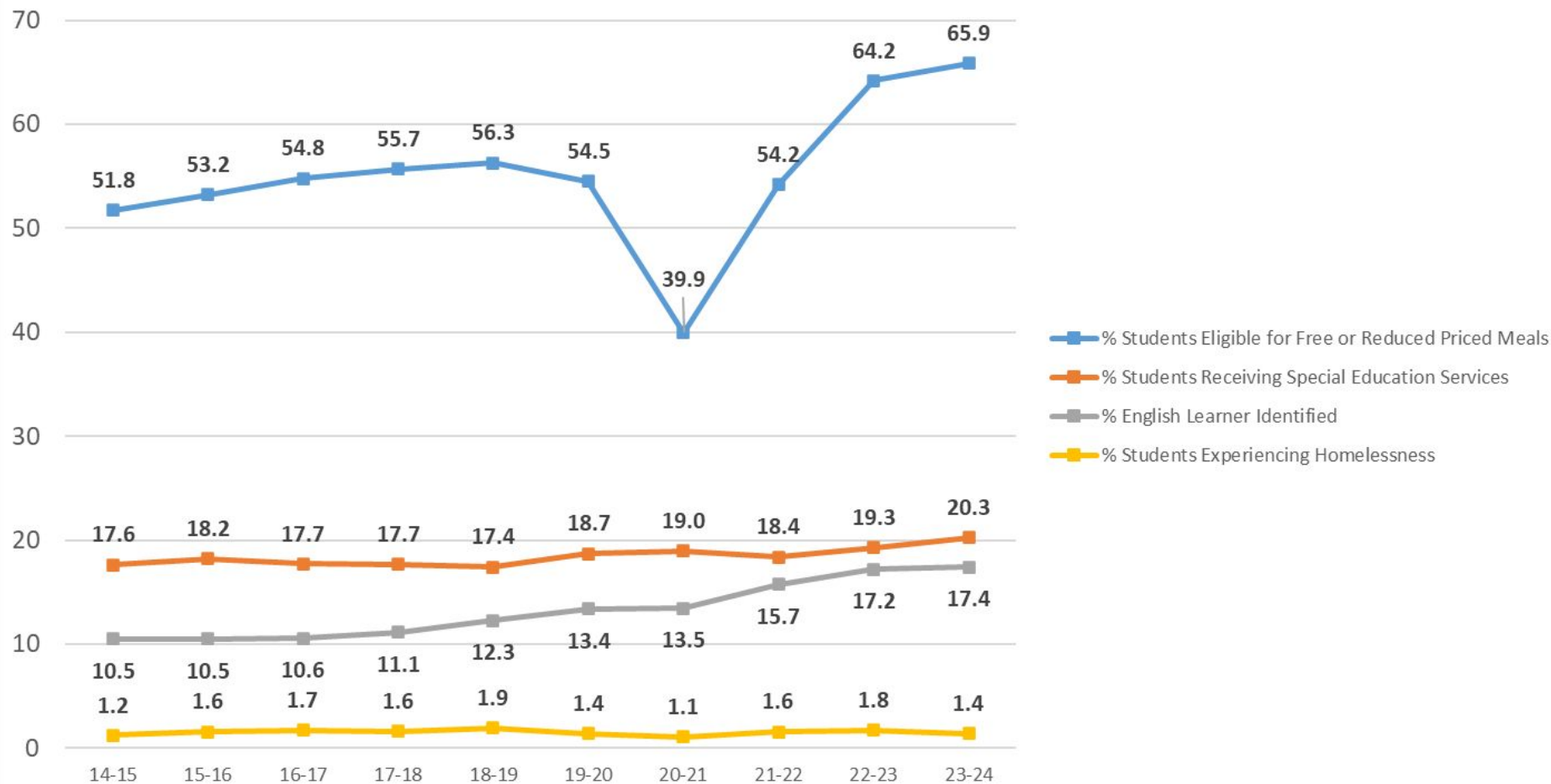
**Updated state definition of American Indian used for 22-23 and 23-24*



School Year 2023-2024

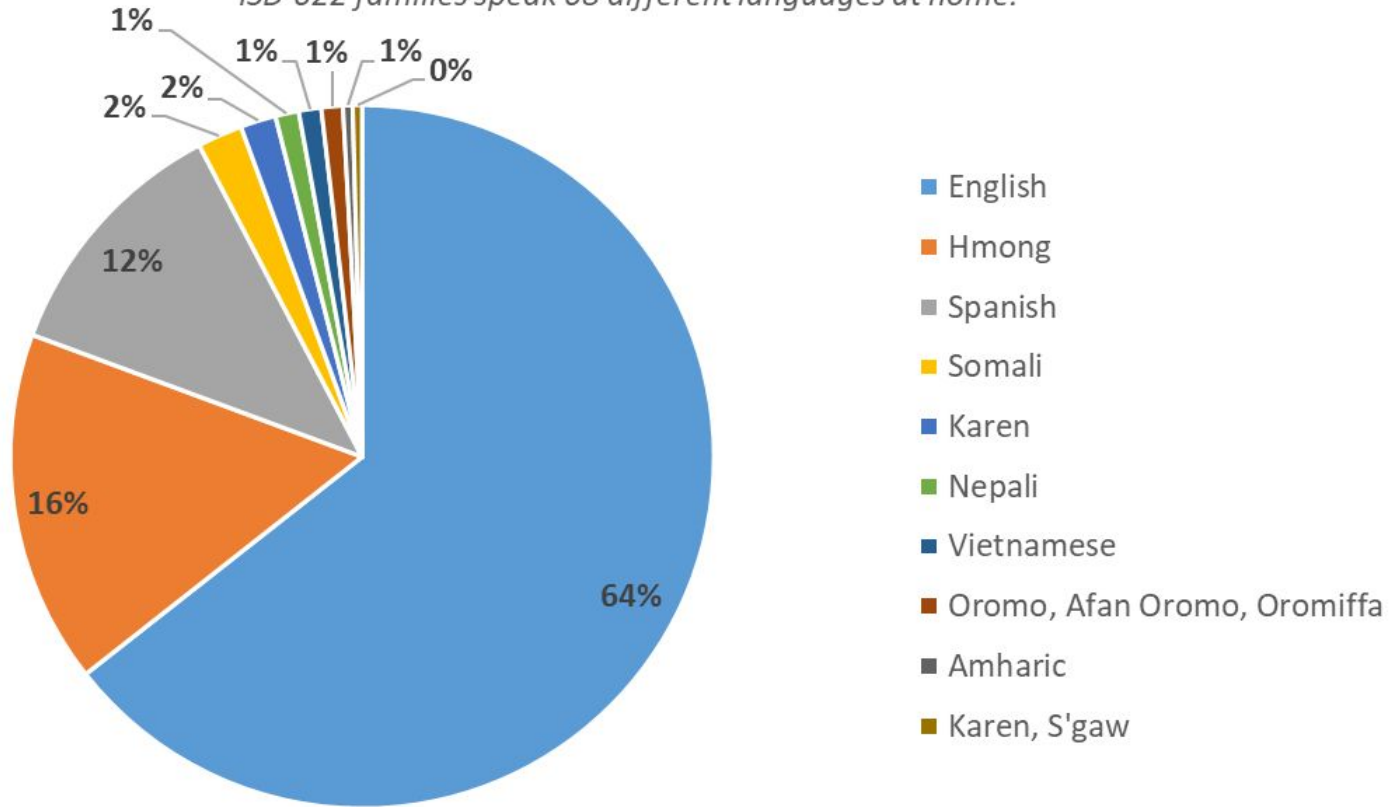


ISD 622 Student Demographics: Program Participation



ISD 622 Home Languages (Top 10)

**ISD 622 families speak 68 different languages at home.*



Agenda

- We are 622!
- **School Attendance**
- Ready for Kindergarten
- Academic Goals
- Graduation
- College and Career Readiness

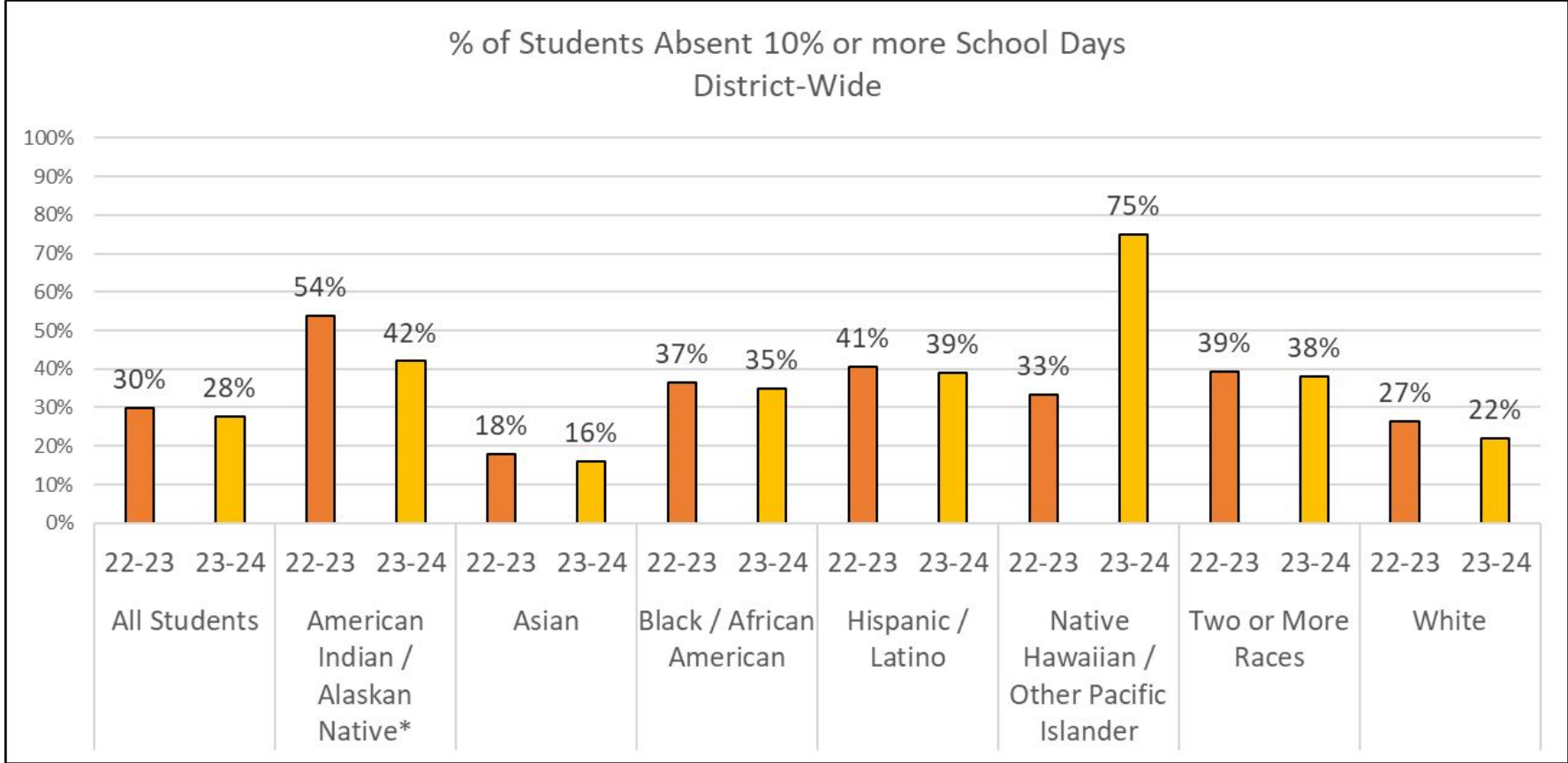


School District 622

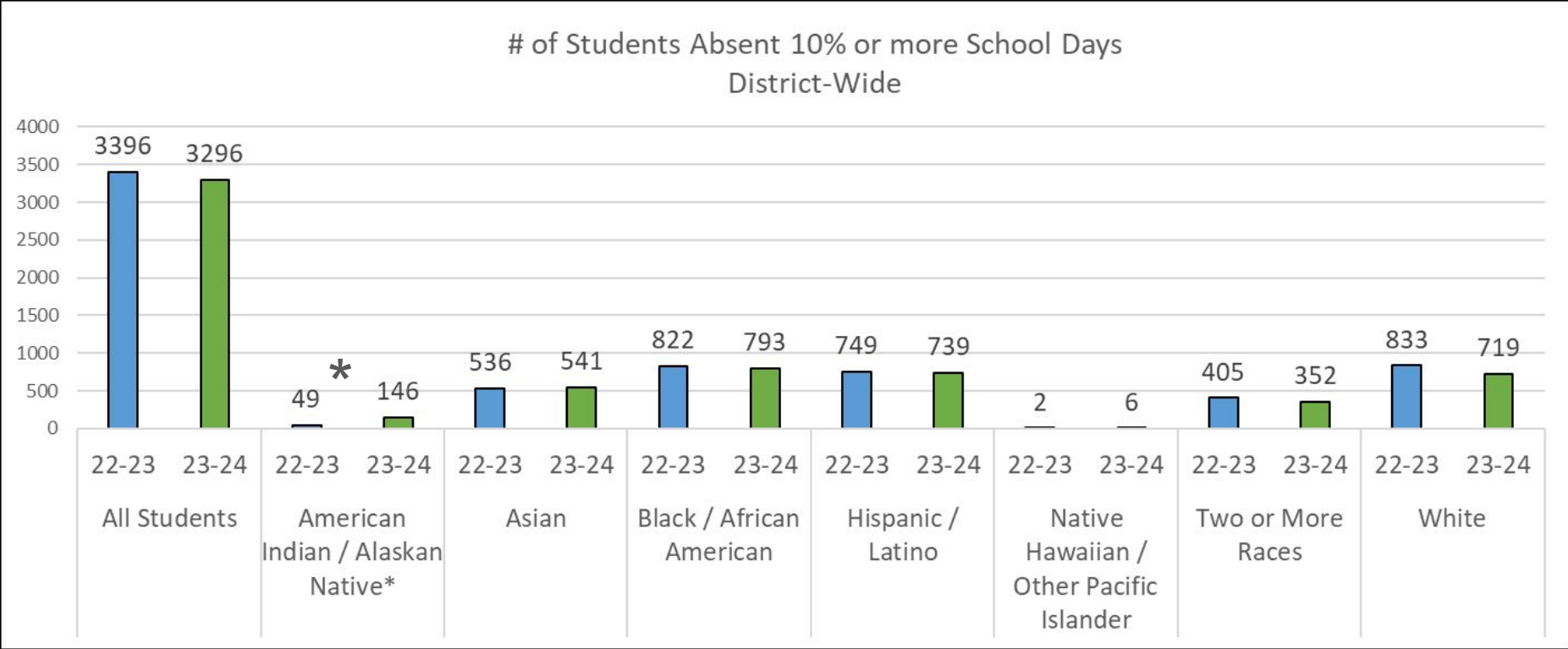
NORTH ST. PAUL | MAPLEWOOD | OAKDALE

Ready for tomorrow

District-Wide (all grades combined)



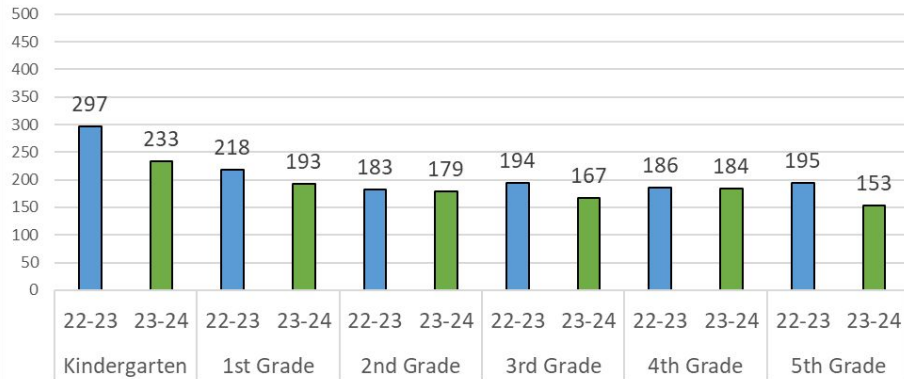
District-Wide (all grades combined)



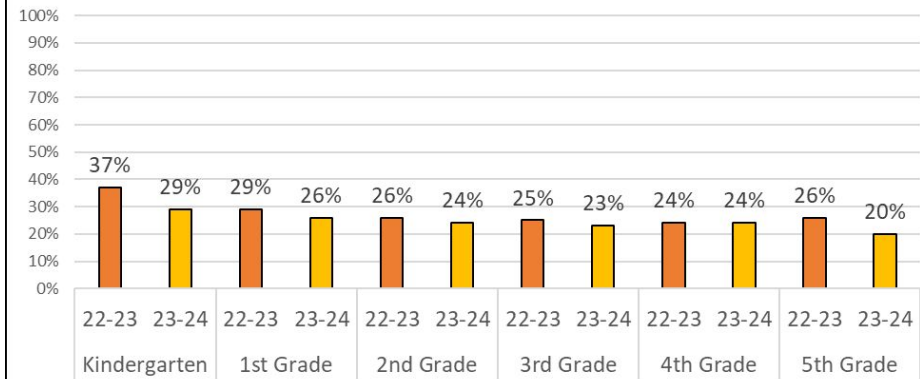
*The new state-defined American Indian category was used starting in 2023-2024, which includes more students. The change between 2022-2023 and 2023-2024 partly reflects the change in how the American Indian category is defined.

District-Wide: Elementary By Grade

of Students Absent 10% or more School Days
District-Wide by Grade, K-5



% of Students Absent 10% or more School Days
District-Wide by Grade, K-5



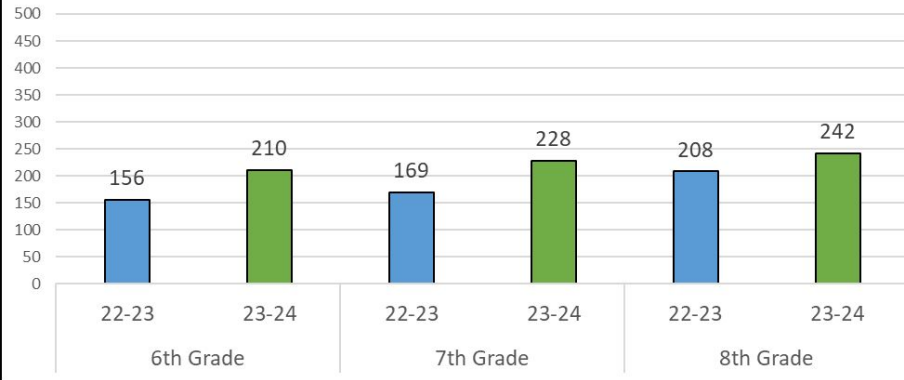
School District 622

NORTH ST. PAUL | MAPLEWOOD | OAKDALE

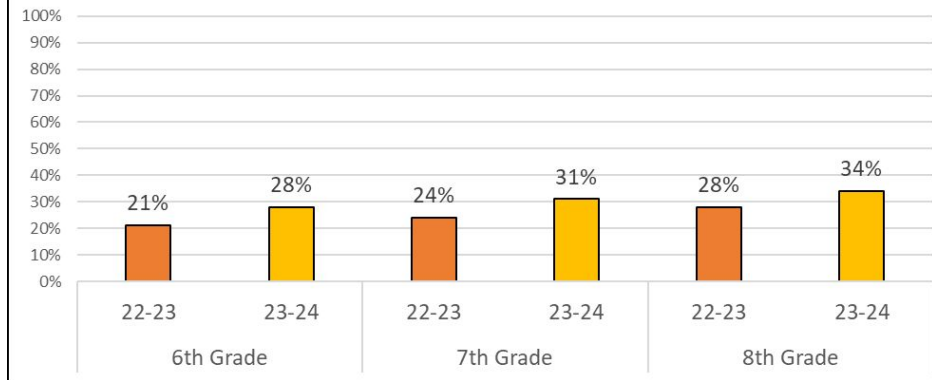
Ready for tomorrow

District-Wide: Middle School By Grade

of Students Absent 10% or more School Days
District-Wide by Grade, 6-8

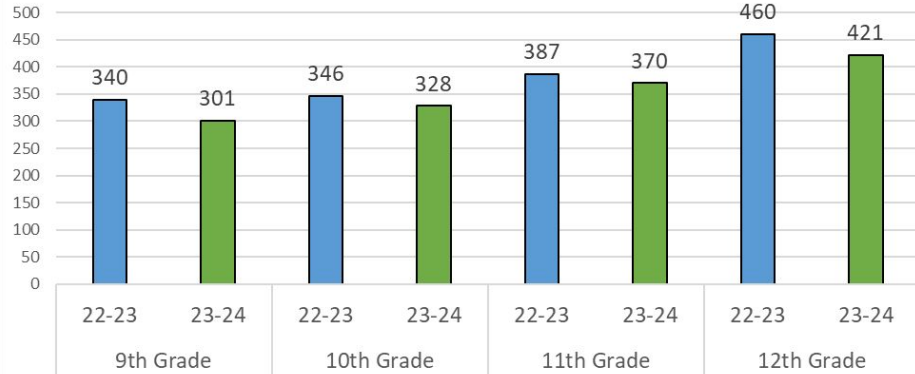


% of Students Absent 10% or more School Days
District-Wide by Grade, 6-8

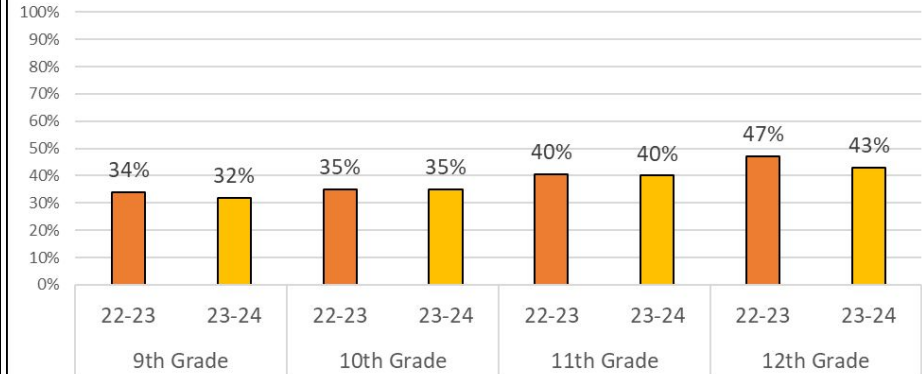


District-Wide: High School By Grade

of Students Absent 10% or more School Days
District-Wide by Grade, 9-12



% of Students Absent 10% or more School Days
District-Wide by Grade, 9-12



School District 622

NORTH ST. PAUL | MAPLEWOOD | OAKDALE

Ready for tomorrow

Strategies to support school attendance

- Every school and program has an attendance goal and attendance strategies as part of their School Improvement Plan (SIP).



School District 622

NORTH ST. PAUL | MAPLEWOOD | OAKDALE

Ready for tomorrow

Agenda

- We are 622!
- School Attendance
- **Ready for Kindergarten**
- Academic Goals
- Graduation
- College and Career Readiness

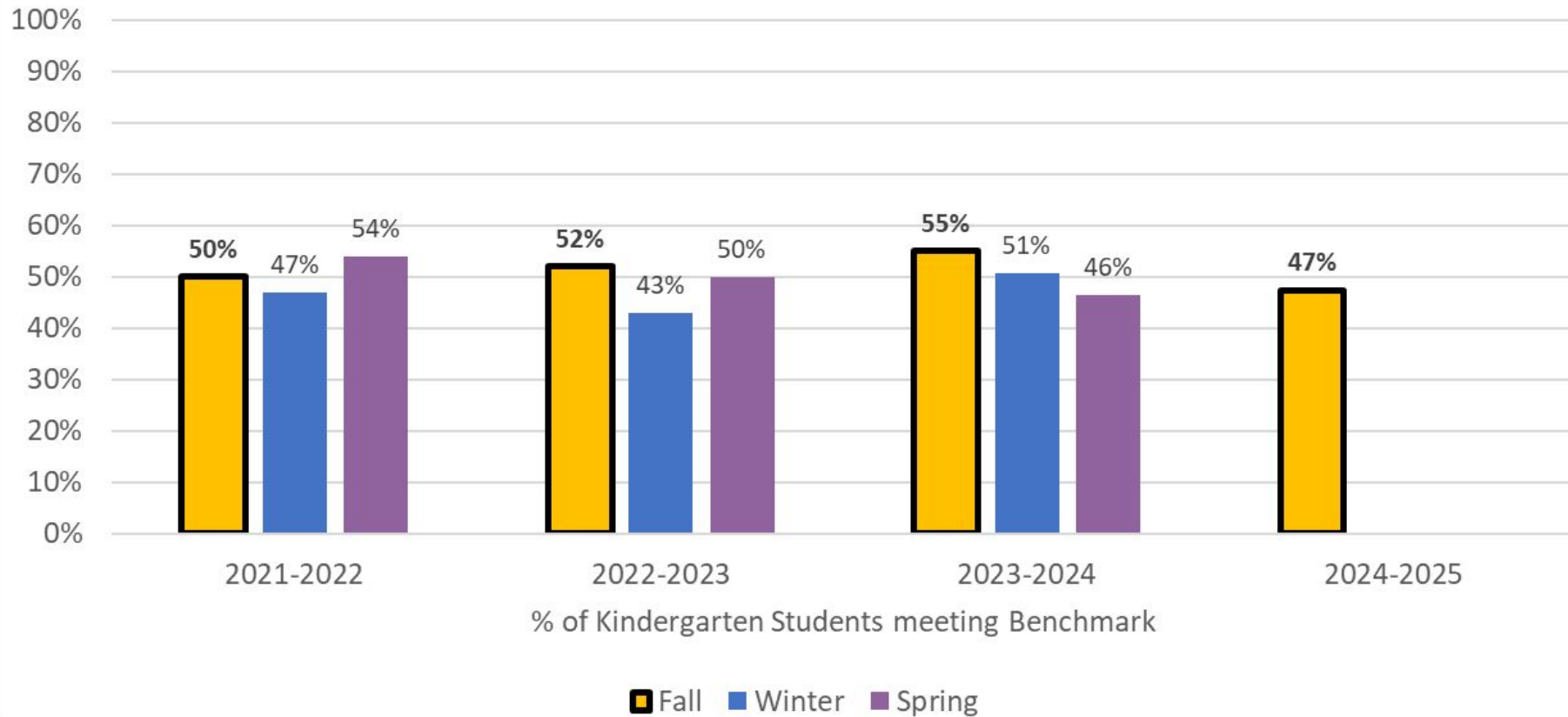


School District 622

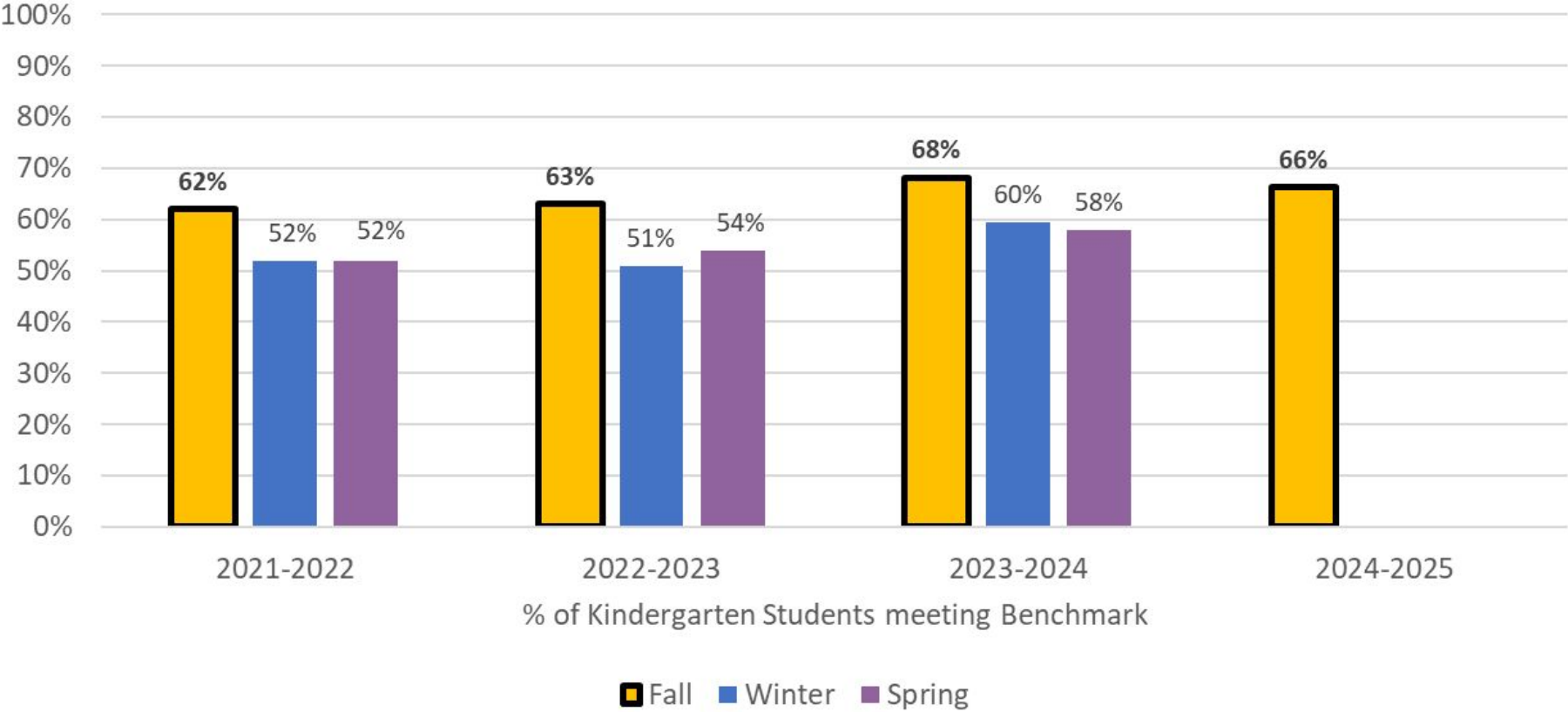
NORTH ST. PAUL | MAPLEWOOD | OAKDALE

Ready for tomorrow

Early Reading Composite (FastBridge)



Early Math Composite (FastBridge)



% of Kindergarten Students meeting Benchmark

■ Fall ■ Winter ■ Spring

All students are ready for Kindergarten.

2023-2024 Goal:	2023-2024 Progress:
<p><u>Early Reading</u> 60% of entering Kindergarten students will demonstrate proficient early reading skills.</p> <p><u>Early Math</u> 73% of entering Kindergarten students will demonstrate proficient early math skills.</p>	<p><u>Early Reading</u> 47% of entering Kindergarten students met the fall benchmark for Early Reading.</p> <p><u>Early Math</u> 66% of entering Kindergarten students met the fall benchmark for Early Math.</p> <p><i>The percentage of entering Kindergarten students meeting benchmark decreased by 8 percentage points in reading and 2 percentage points in math from Fall 2024 to Fall 2025.</i></p>

Strategies to support the goal area: *All students are ready for Kindergarten.*

2023-2024

- Early Learning hosted Bring Your Grown up to School Days in the Fall and Bring Your Grown Up to Kindergarten Day in the Spring. This helps parents and students ease into the Kindergarten transition.
- All ECFE, ECSE & Pre-K teachers participated in Early Childhood Workshop Framework professional development to ensure equitable early learning experiences for all students across ISD 622.
- Pre-K Subject Area Committee conducted a curriculum review of Amplify Core Knowledge Language Arts (CKLA) for possible future adoption.

2024-2025

- Early learning educators participated in a workshop at the Children's Museum in September focused on the intersection of brain development and supporting mental health through play. Staff will be provided with opportunities for coaching on these topics throughout the year.
- A similar workshop at the Children's Museum will be provided for families in February. This event aims to provide families with valuable tools and resources to support their own mental health and that of their children.
- We continue to hold Bring Your Grown up to School Days and will increase opportunities for Bring Your Grown Up to Kindergarten Day in the Spring.
- All ECSE and Pre-K classroom teachers are participating in Early Childhood LETRS, which is based on the Science of Reading.



Agenda

- We are 622!
- School Attendance
- Ready for Kindergarten
- **Academic Goals**
- Graduation
- College and Career Readiness



School District 622

NORTH ST. PAUL | MAPLEWOOD | OAKDALE

Ready for tomorrow

Academic Progress: Reading

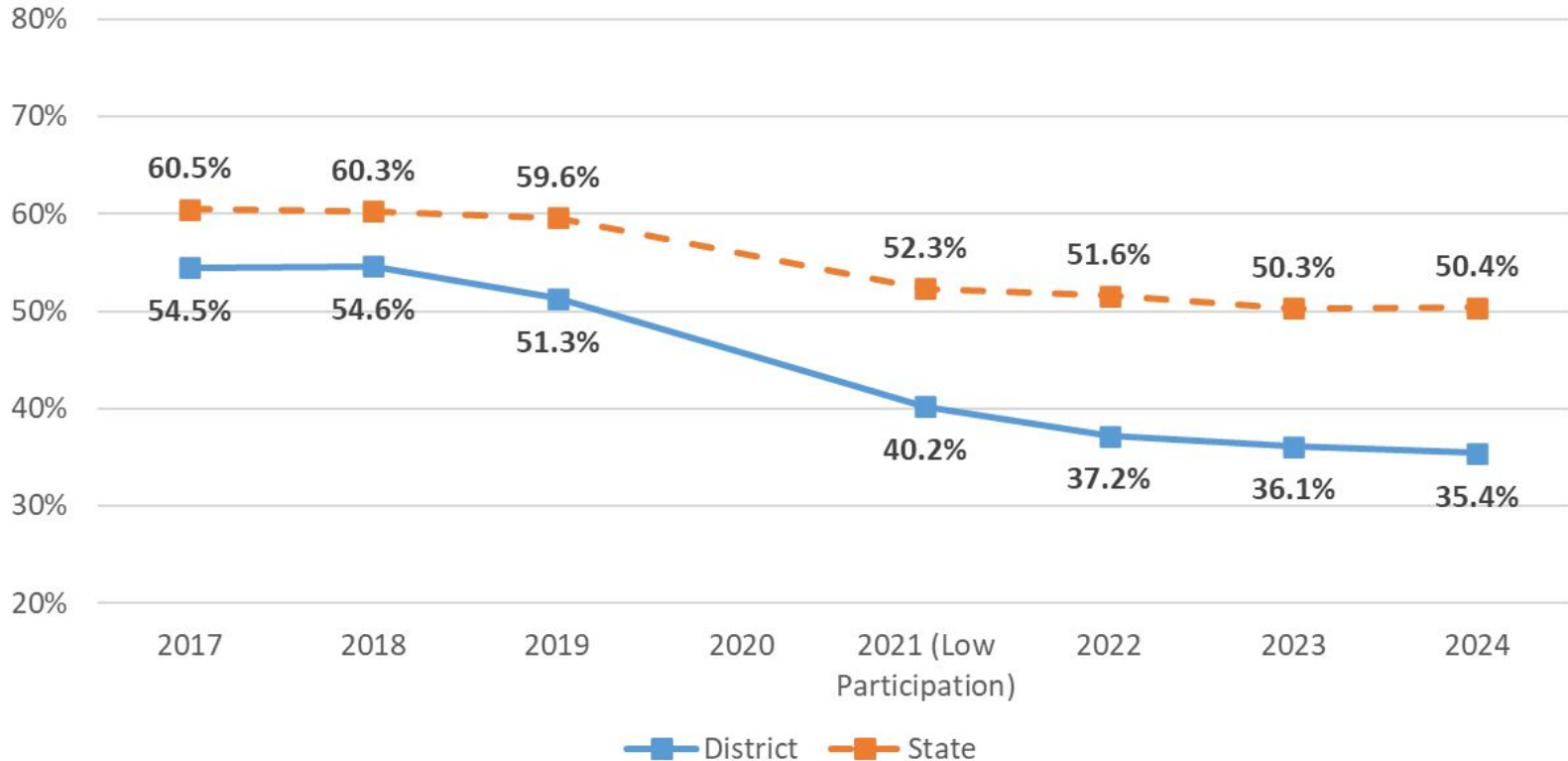


School District 622

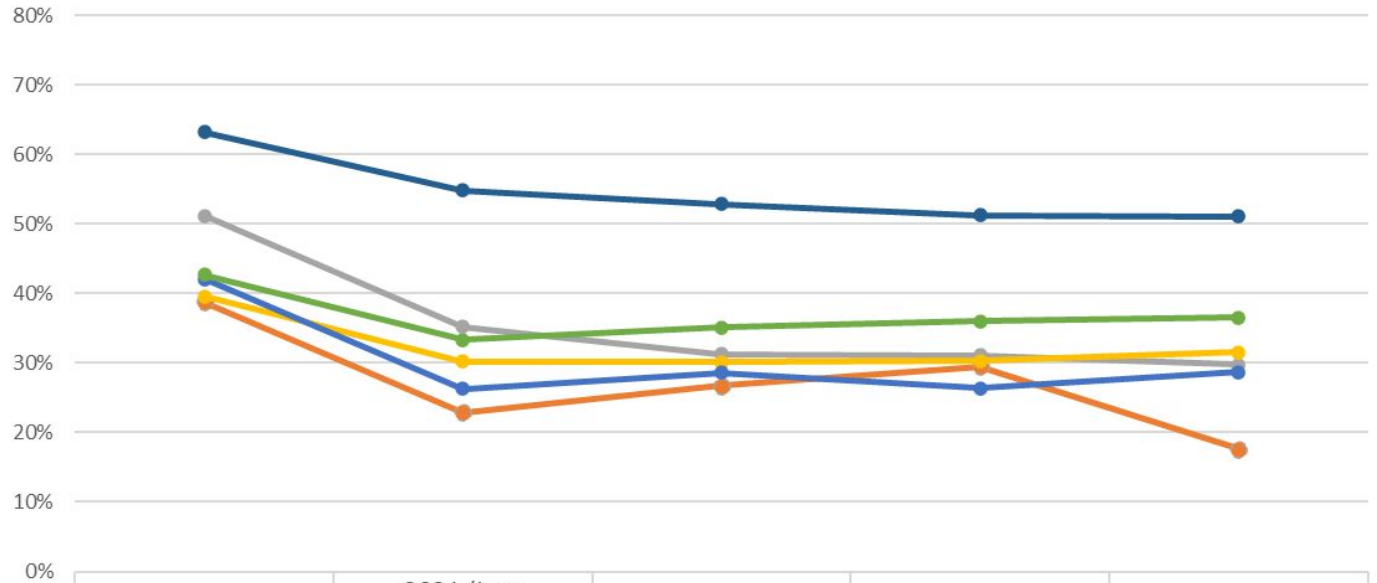
NORTH ST. PAUL | MAPLEWOOD | OAKDALE

Ready for tomorrow

MCA Percent Proficient Reading: All Grades Tested

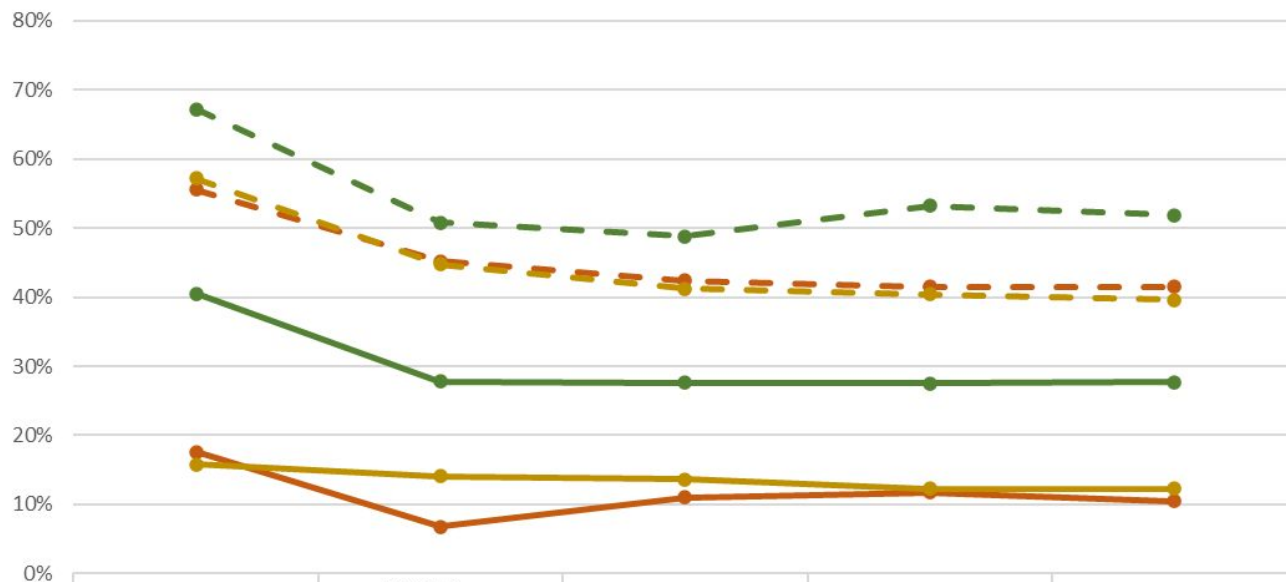


Reading MCA Percent Proficient: All Grades Tested



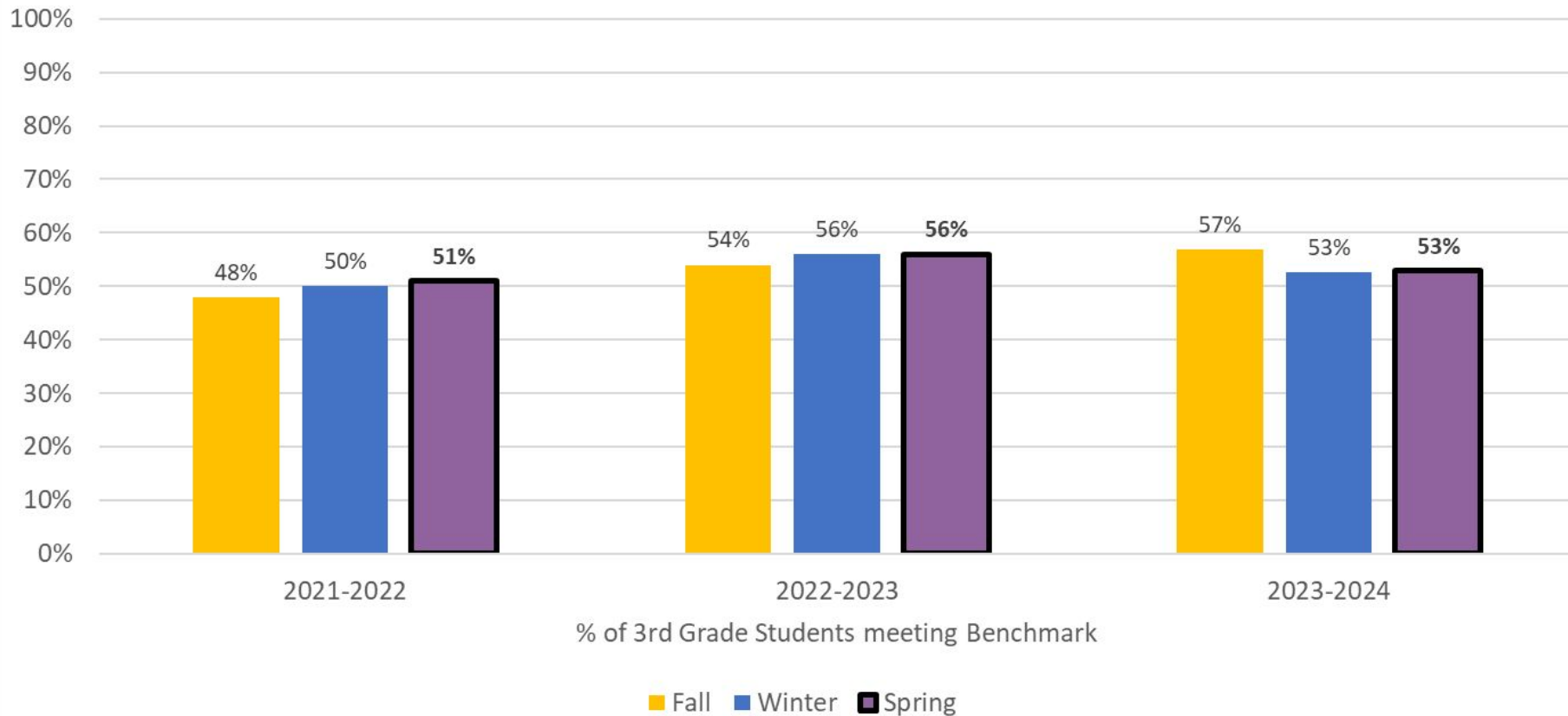
	2019	2021 (Low Participation)	2022	2023	2024
American Indian District	38.8%	22.9%	26.7%	29.5%	17.6%
Asian District	51.2%	35.2%	31.3%	31.1%	29.8%
Black or African American District	39.6%	30.2%	30.1%	30.3%	31.5%
Hispanic or Latino District	42.1%	26.3%	28.6%	26.4%	28.7%
Two or More Races District	42.7%	33.3%	35.1%	36.0%	36.5%
White District	63.2%	54.8%	52.9%	51.3%	51.1%

Reading MCA Percent Proficient: All Grades Tested



	2019	2021 (Low Participation)	2022	2023	2024
English Learner District	17.6%	6.8%	11.0%	11.7%	10.5%
Not English Learner District	55.6%	45.2%	42.4%	41.5%	41.5%
Special Education District	15.8%	14.1%	13.6%	12.3%	12.3%
Not Special Education District	57.2%	44.7%	41.2%	40.4%	39.6%
Free/Reduced-Price Meals District	40.5%	27.8%	27.6%	27.5%	27.7%
Not Free/Reduced-Price Meals District	67.2%	50.8%	48.8%	53.2%	51.9%

3rd Grade Reading (FastBridge aReading)



All third grade students are proficient readers.

2023-2024 Goal:	2023-2024 Progress:
<p>61% of 3rd grade students will demonstrate proficient reading skills.</p>	<p>53% of 3rd grade students met the spring benchmark for aReading.</p> <p><i>The percentage of 3rd grade students meeting benchmark decreased by 3 percentage points from Spring 2023 (56%) to Spring 2024 (53%).</i></p>



Strategies to support the goal area:

All third grade students are proficient readers.

2023-2024

- Implemented a Structured Literacy Framework and a new K-5 literacy curriculum, Amplify Core Knowledge Language Arts (Amplify CKLA), 120 min/day of literacy instruction
- Continued implementation of a Multi-tiered Systems of Support (MTSS) framework which includes daily What I Need (WIN) instruction with opportunities for students to receive intensive intervention, remediation, continued practice and enrichment
- Additional professional development for staff on Science of Reading (SoR) and Structured Literacy
- Grade-level data discussions to guide instructional decision making

2024-2025

- All PreK - 5 teachers engaging in READ Act literacy professional development
 - PreK/Early Learning are engaging in LETRS for Early Childhood Educators
 - K-5 classroom, Multilingual (ML), Special Education, Advanced Academics, and Intervention teachers are engaging in CORE Online Language & Literacy Academy (CORE OL&LA)
- Year 2 implementation of Structured Literacy Framework and Amplify CKLA (120 min/day instruction)
- Continued implementation of the MTSS framework, including daily WIN time
- Grade-level data discussions to guide instructional decision making



School District 622

NORTH ST. PAUL | MAPLEWOOD | OAKDALE

Ready for tomorrow

Academic Progress: Math

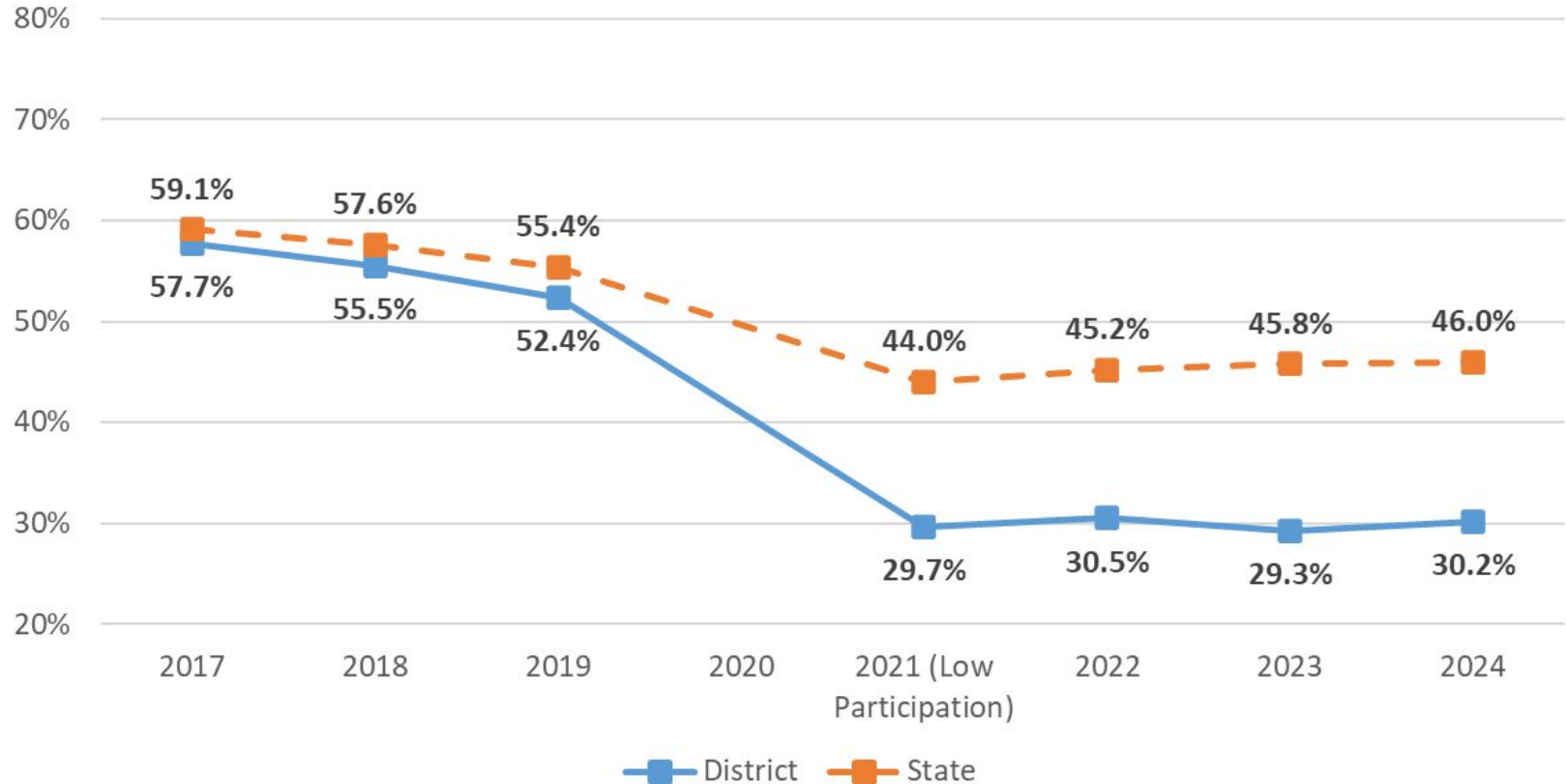


School District 622

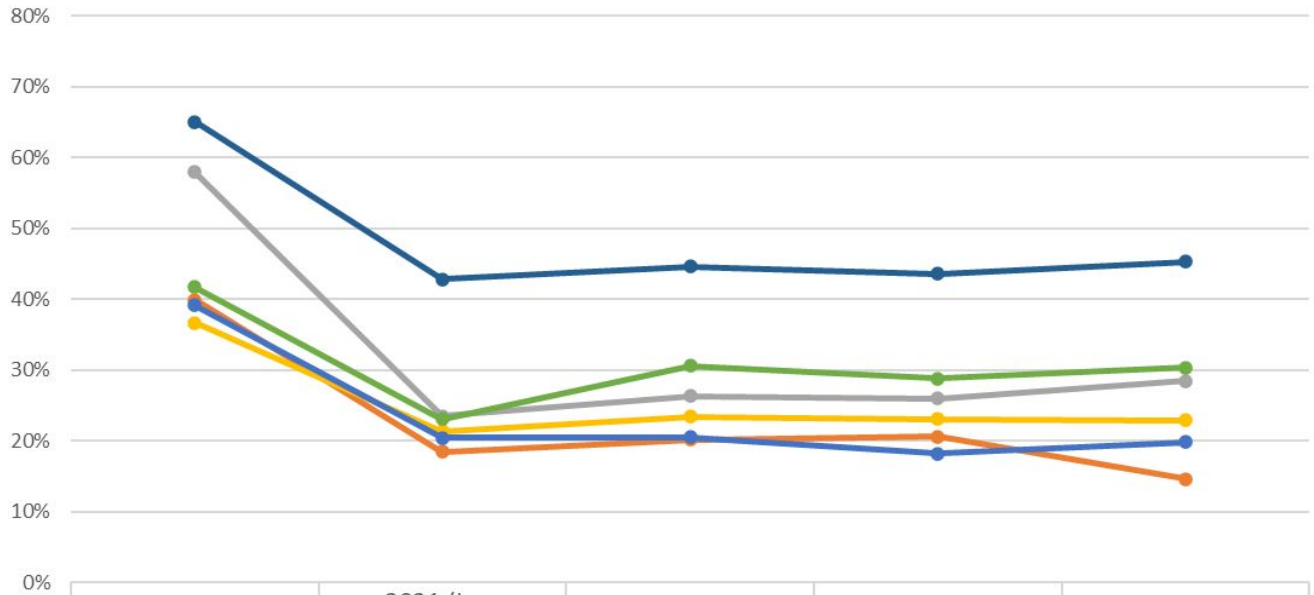
NORTH ST. PAUL | MAPLEWOOD | OAKDALE

Ready for tomorrow

MCA Percent Proficient Math: All Grades Tested

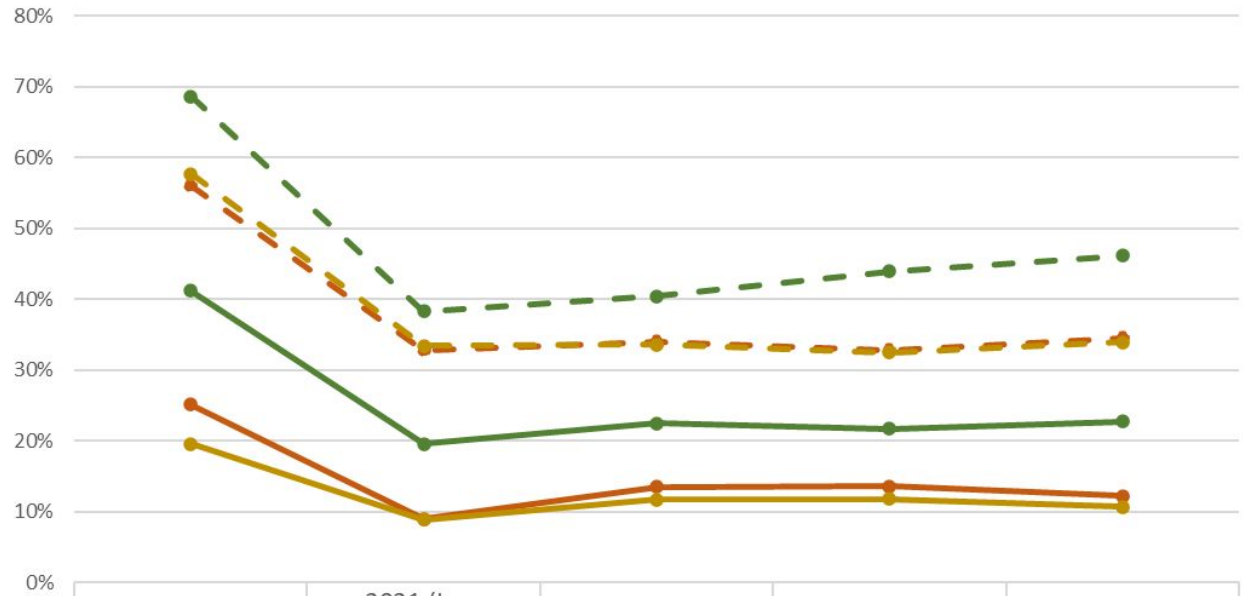


Math MCA Percent Proficient: All Grades Tested



	2019	2021 (Low Participation)	2022	2023	2024
American Indian District	39.9%	18.5%	20.2%	20.6%	14.6%
Asian District	57.9%	23.5%	26.3%	26.0%	28.5%
Black or African American District	36.7%	21.4%	23.4%	23.1%	22.9%
Hispanic or Latino District	39.1%	20.4%	20.5%	18.2%	19.8%
Two or More Races District	41.7%	23.1%	30.6%	28.8%	30.3%
White District	65.0%	42.8%	44.6%	43.6%	45.3%

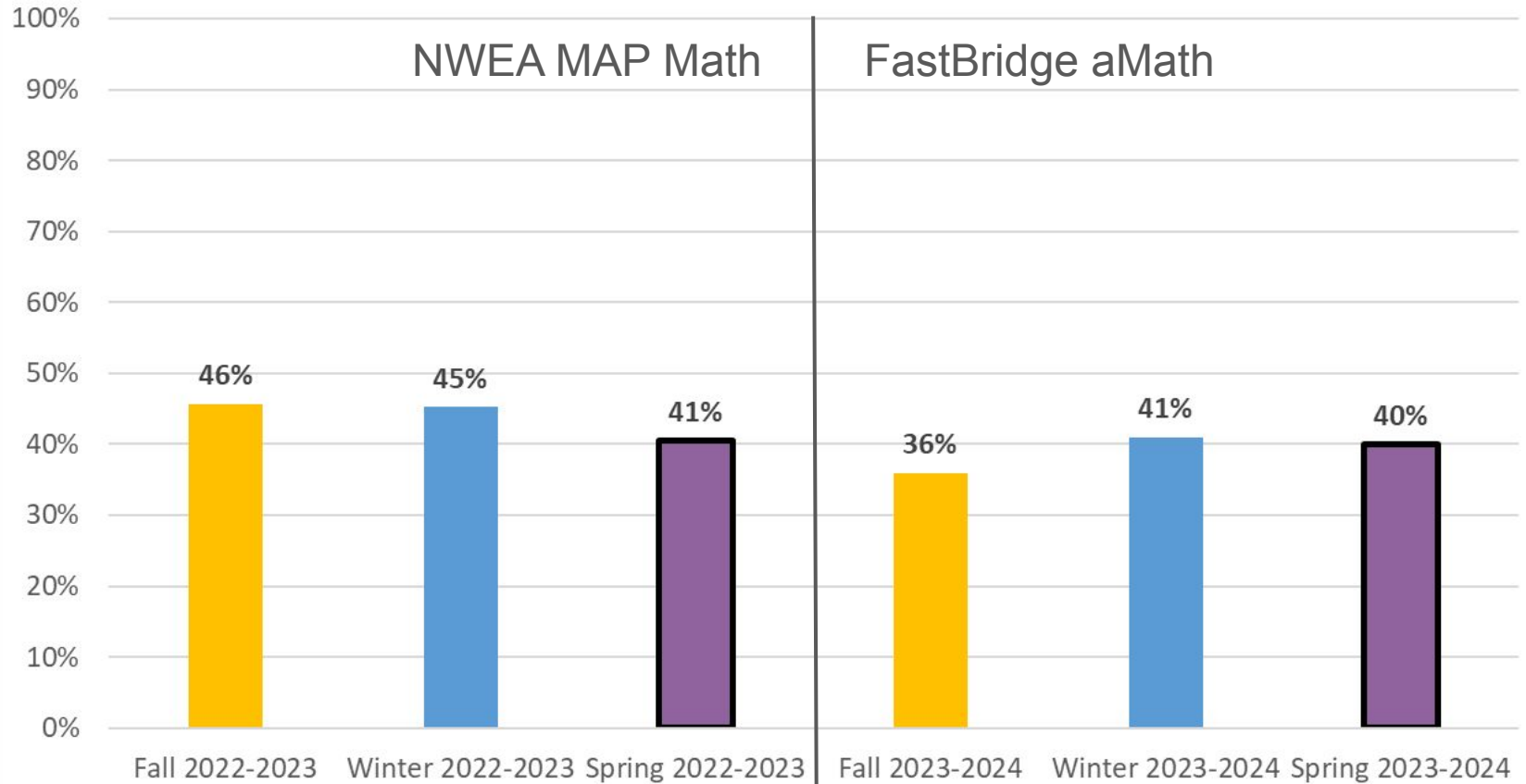
Math MCA Percent Proficient: All Grades Tested



	2019	2021 (Low Participation)	2022	2023	2024
English Learner District	25.1%	9.0%	13.5%	13.6%	12.2%
Not English Learner District	56.0%	32.8%	34.0%	32.8%	34.5%
Special Education District	19.6%	8.9%	11.7%	11.8%	10.7%
Not Special Education District	57.7%	33.4%	33.6%	32.5%	33.9%
Free/Reduced-Price Meals District	41.2%	19.6%	22.5%	21.7%	22.7%
Not Free/Reduced-Price Meals District	68.6%	38.3%	40.4%	43.9%	46.1%

8th Grade Math

Percent of Students Proficient on NWEA MAP / FastBridge aMath



All eighth grade students are proficient mathematicians.

2023-2024 Goal:	2023-2024 Progress:
<p>50% of 8th grade students will demonstrate proficient math skills.</p>	<p>40% of 8th grade students were proficient on the spring FastBridge aMath assessment.</p> <p><i>The percentage of 8th grade students demonstrating proficient math scores decreased by 1 percentage point from Spring 2023 (41%) to Spring 2024 (40%).</i></p>

Strategies to support the goal area:

All eighth grade students are proficient mathematicians.

2023-2024

- Second year of aligned middle school math curriculum
- Focus on supporting teachers with instructional shift and common assessments
- Focus on attendance

2024-2025

- Continuation of aligned middle school math curriculum and common assessments
- Content Specialist-lead PLC work focused on student data and intended level of rigor of MN State Standards
- Looking ahead to new math standards



School District 622

NORTH ST. PAUL | MAPLEWOOD | OAKDALE

Ready for tomorrow

Agenda

- We are 622!
- School Attendance
- Ready for Kindergarten
- Academic Goals
- **Graduation**
- College and Career Readiness

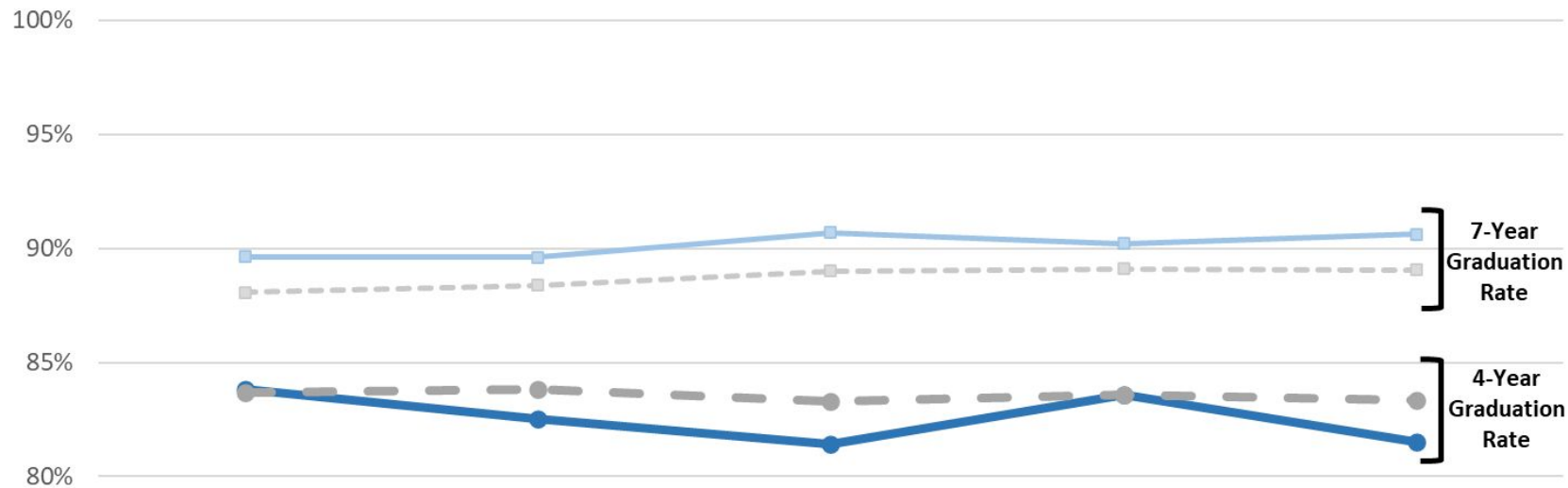


School District 622

NORTH ST. PAUL | MAPLEWOOD | OAKDALE

Ready for tomorrow

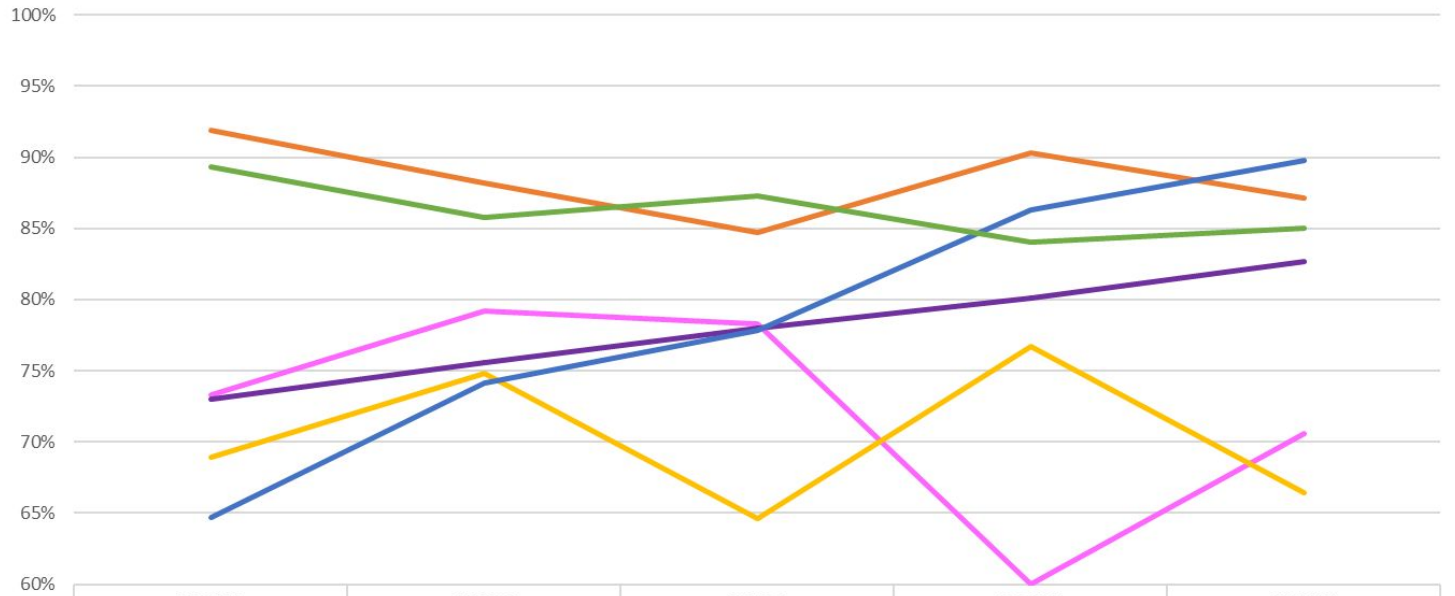
Percent of Students Who Graduated 5-Year Trend



	2019	2020	2021	2022	2023
622 4-Year	83.8%	82.5%	81.4%	83.6%	81.5%
622 7-Year	89.6%	89.6%	90.7%	90.2%	90.6%
State 4-Year	83.7%	83.8%	83.3%	83.6%	83.3%
State 7-Year	88.1%	88.4%	89.0%	89.1%	89.1%

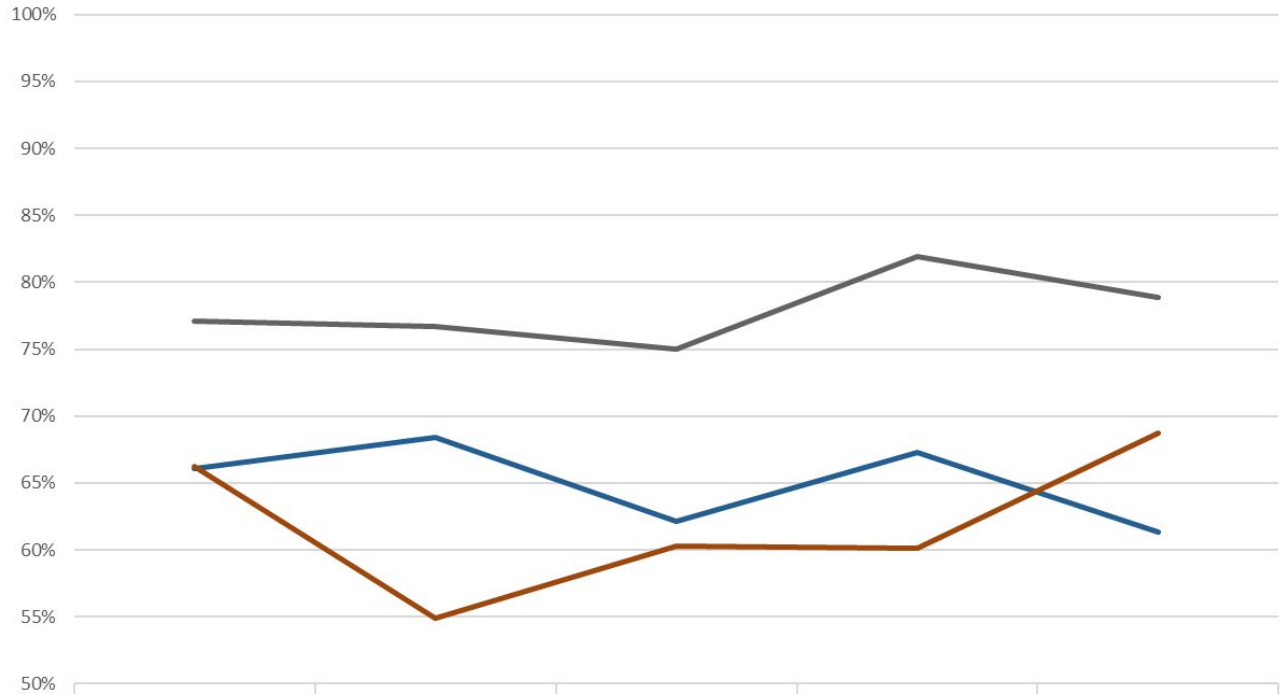
Percent of Students who Graduated in 2023 *State racial and ethnic categories	ISD 622	State
All Students (4 Yr)	81.5%	83.3%
American Indian Students	70.6%	61.3%
Asian Students	87.1%	85.4%
Black Students	82.7%	72.1%
Hispanic Students	66.4%	69.2%
Two or More Races Students	89.7%	80.3%
White Students	85.0%	88.7%
English Learner Students	61.4%	63.4%
Students Receiving Special Education	68.8%	65.6%
Students Eligible for Free/Reduced Priced Meals	78.8%	71.9%

4-Year Graduation Rate



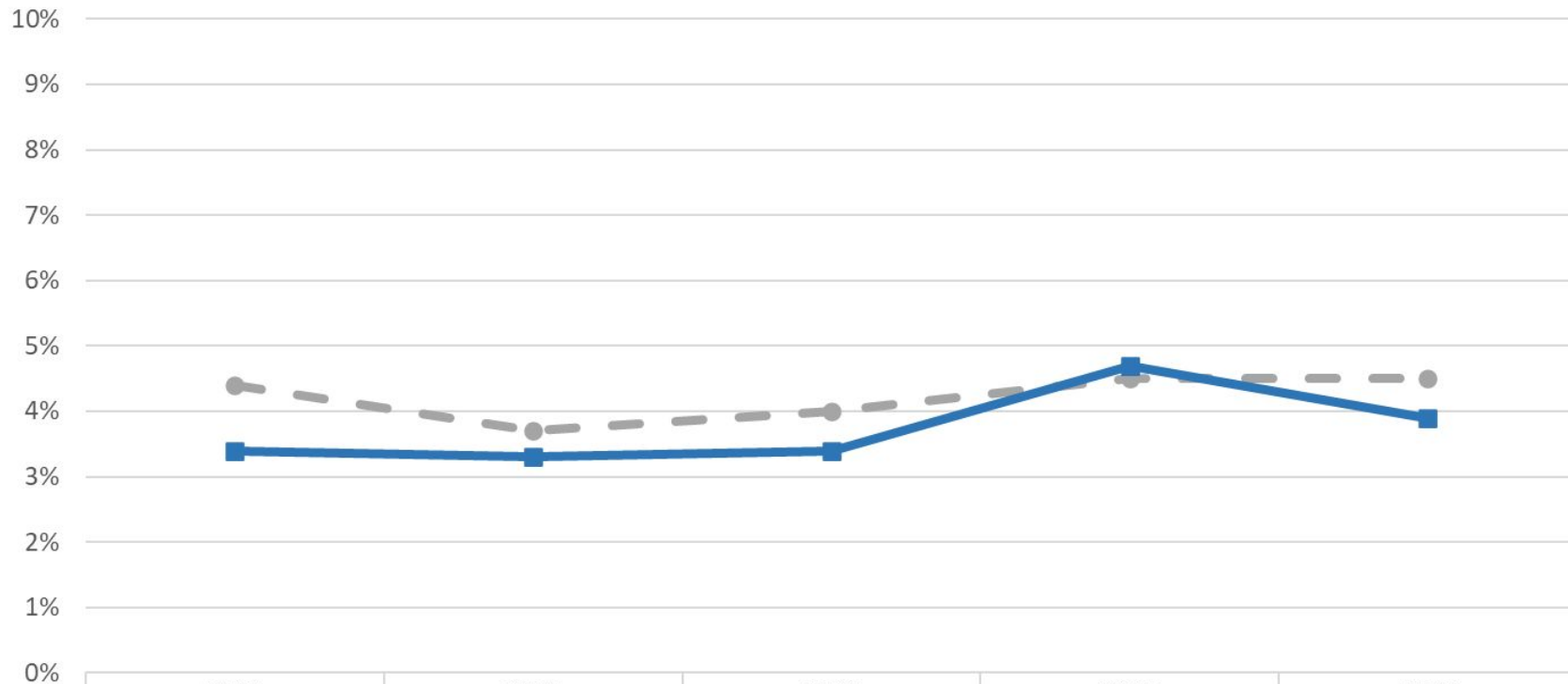
	2019	2020	2021	2022	2023
American Indian	73.3%	79.2%	78.3%	60.0%	70.6%
Asian Students	91.9%	88.2%	84.7%	90.3%	87.1%
Black Students	73.0%	75.6%	78.0%	80.1%	82.7%
Hispanic Students	68.9%	74.8%	64.6%	76.7%	66.4%
Two or More Races Students	64.7%	74.1%	77.8%	86.3%	89.7%
White Students	89.3%	85.8%	87.3%	84.1%	85.0%

4-Year Graduation Rate



	2019	2020	2021	2022	2023
English Learner Students	66.1%	68.4%	62.1%	67.3%	61.4%
Special Education Students	66.2%	54.9%	60.3%	60.1%	68.8%
Students Eligible for Free/Reduced Priced Meals	77.1%	76.7%	75.0%	81.9%	78.8%

Percent of Students Who Dropped Out 5-Year Trend



● State
■ ISD 622

	2019	2020	2021	2022	2023
State	4.4%	3.7%	4.0%	4.5%	4.5%
ISD 622	3.4%	3.3%	3.4%	4.7%	3.9%

Percent of Students who Dropped Out in 2023 *State racial and ethnic categories	ISD 622	State
All Students (4 Yr)	3.9%	4.5%
American Indian Students	0.0%	12.9%
Asian Students	1.6%	2.7%
Black Students	3.2%	5.3%
Hispanic Students	8.7%	10.1%
Two or More Races Students	5.1%	6.1%
White Students	3.2%	3.2%
English Learner Students	8.3%	10.2%
Students Receiving Special Education	6.3%	7.9%
Students Eligible for Free/Reduced Priced Meals	5.1%	8.0%

All students graduate from high school.

Goal:	Progress:
<p>The percent of students who graduate in 4 years will be 90% by 2025.</p>	<p>Overall, 81.5% of seniors graduated from high school in 2023.</p> <p><i>The percentage of students who graduated in 4 years decreased by 1.8 percentage points from 2022 (83.3%) to 2023 (81.5%).</i></p>

Agenda

- We are 622!
- School Attendance
- Ready for Kindergarten
- Academic Goals
- Graduation
- **College and Career Readiness**



School District 622

NORTH ST. PAUL | MAPLEWOOD | OAKDALE

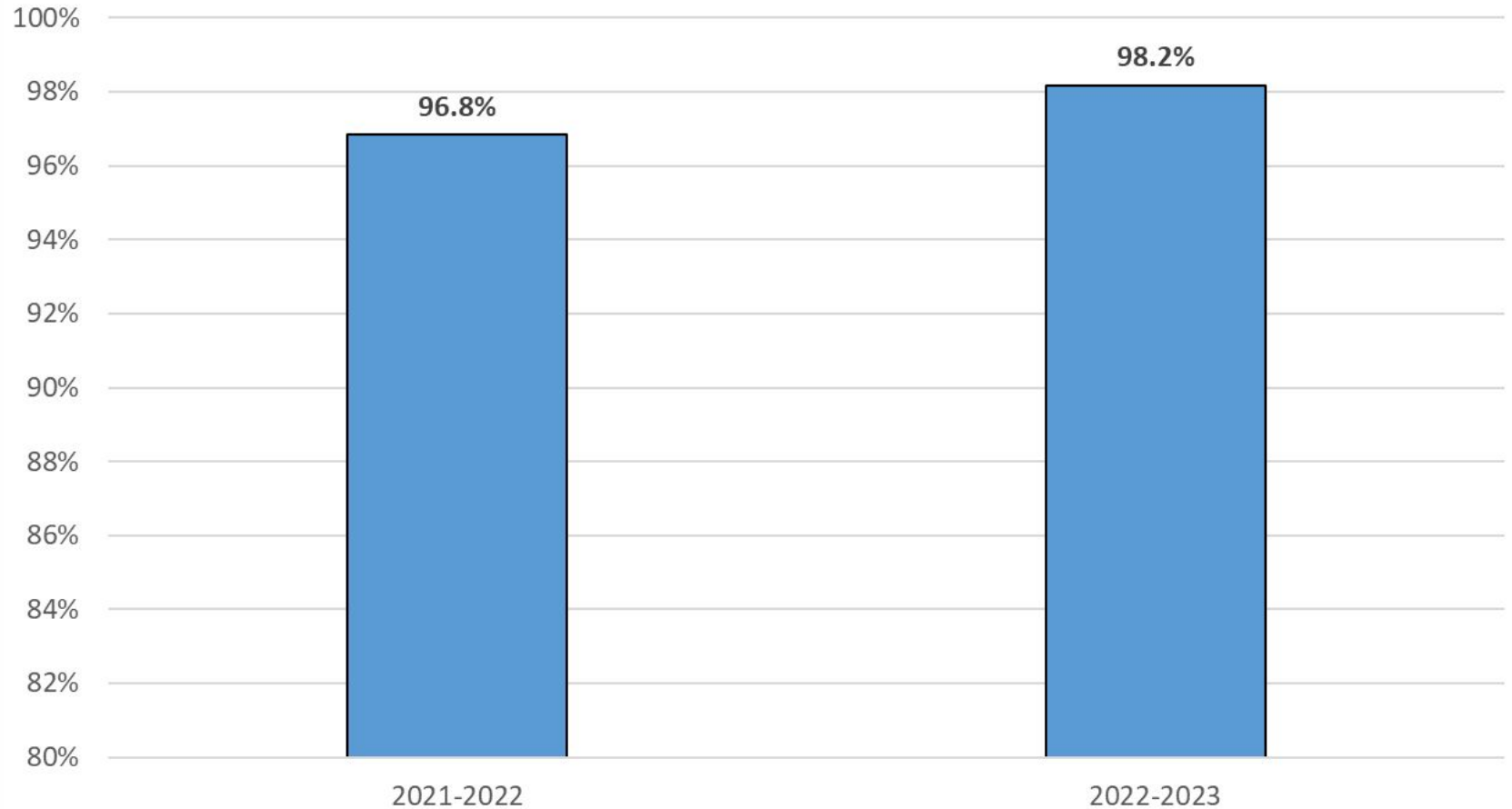
Ready for tomorrow

Updated College and Career Readiness Criteria

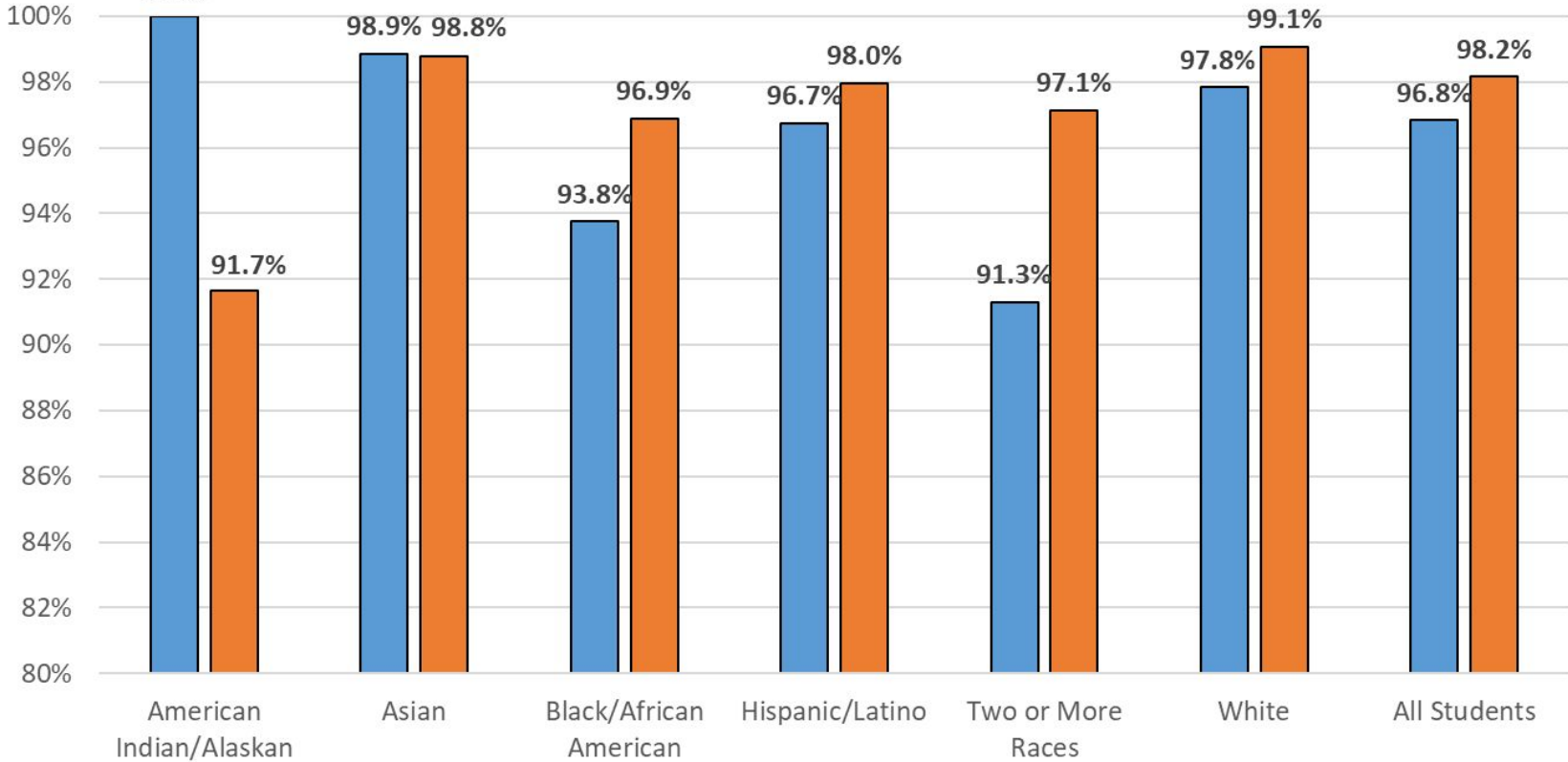
- **Students who graduate in four years and meet one or more of the following criteria:**
- Earning college credits and/or industry credentials before graduation, which includes:
 - Earning credit in a college-credit-bearing class
 - Concurrent enrollment
 - Articulated credit
 - Postsecondary enrollment options
 - Industry credentials through 916 Career & Tech Ed (CTE)
- Scoring a 3 or higher on the AP exam
- Earning a Bilingual Seal
- 3.0 GPA or higher
- ACT Composite Score of 21 or higher



College and Career Readiness



2023 College and Career Readiness



■ 2022 ■ 2023

Strategies to support the goal area: *All students attain college and career readiness.*

2023-2024

- Career Pathways work at North and Tartan
- YouScience aptitude inventory to identify students strengths aligned to the world of work
- Ongoing audits of early college credit course offerings through curriculum reviews
- MDE program review and alignment of all ISD 622 Career and Tech Ed courses

2024-2025

- Direct Admissions MN participation at all 3 high schools
- Continue audit of early college credit opportunities to seek out new opportunities
- Continued Career Pathways opportunities, YouScience aptitude inventory
- Continued support of PSEO, Concurrent Enrollment, and 916 Career and Tech Ed offerings



School District 622

NORTH ST. PAUL | MAPLEWOOD | OAKDALE

Ready for tomorrow

All students attain college and career readiness.

Goal:	Progress:
97% of 2023 graduating seniors will meet one of the College and Career Readiness criteria with all student groups reaching 95% or higher.	98.2% of 2023 graduating seniors met one of the College and Career Readiness criteria.



Recommended Comprehensive Achievement and Civic Readiness 2024-2025 Goals

<i>All children are ready for school.</i>	60% of entering Kindergarten students will demonstrate proficient early reading skills. 73% of entering Kindergarten students will demonstrate proficient early math skills.
<i>All racial and economic achievement gaps between students are closed.</i>	The proficiency gap between our highest achieving student group and all other student groups will decrease by 5 percentage points on MCA Reading, MCA Math, and MCA Science assessments.
<i>All students graduate from high school.</i>	The percent of students who graduate in four years will increase from 81.5% in 2022-2023 to 84% in 2023-2024.
<i>All students are ready for career and college.</i>	97% of 2024 graduating seniors will meet one of the College and Career Readiness criteria with all student groups reaching 95% or higher.
<i>Prepare students to be lifelong learners.</i>	ISD 622 will provide students opportunities to engage in learning experiences outside of required learning to develop a lifelong learning mindset.

School Improvement Plans (SIPs)

- The District 622 Strategic Plan and analysis of current district data inform our District Priorities.
- School leadership teams use the District Priorities and analysis of current school data to create their School Improvement Plans.
 - Each plan includes goals focusing on Student Access to Learning and Academic Outcomes.
 - Individual SIPs for 2024-2025 are linked on the next slide.



ISD 622 2022-2023 SIP Plans

[Carver](#)

[John Glenn](#)

[Castle](#)

[Skyview](#)

[Cowern](#)

[North](#)

[Eagle Point](#)

[Tartan](#)

[Justice Alan Page](#)

[Richardson](#)

[622 Online High School](#)

[Weaver](#)

[Early Learning](#)

[Webster K-12](#)

[Next Step](#)

Thank you!



School District 622

NORTH ST. PAUL | MAPLEWOOD | OAKDALE

Ready for tomorrow