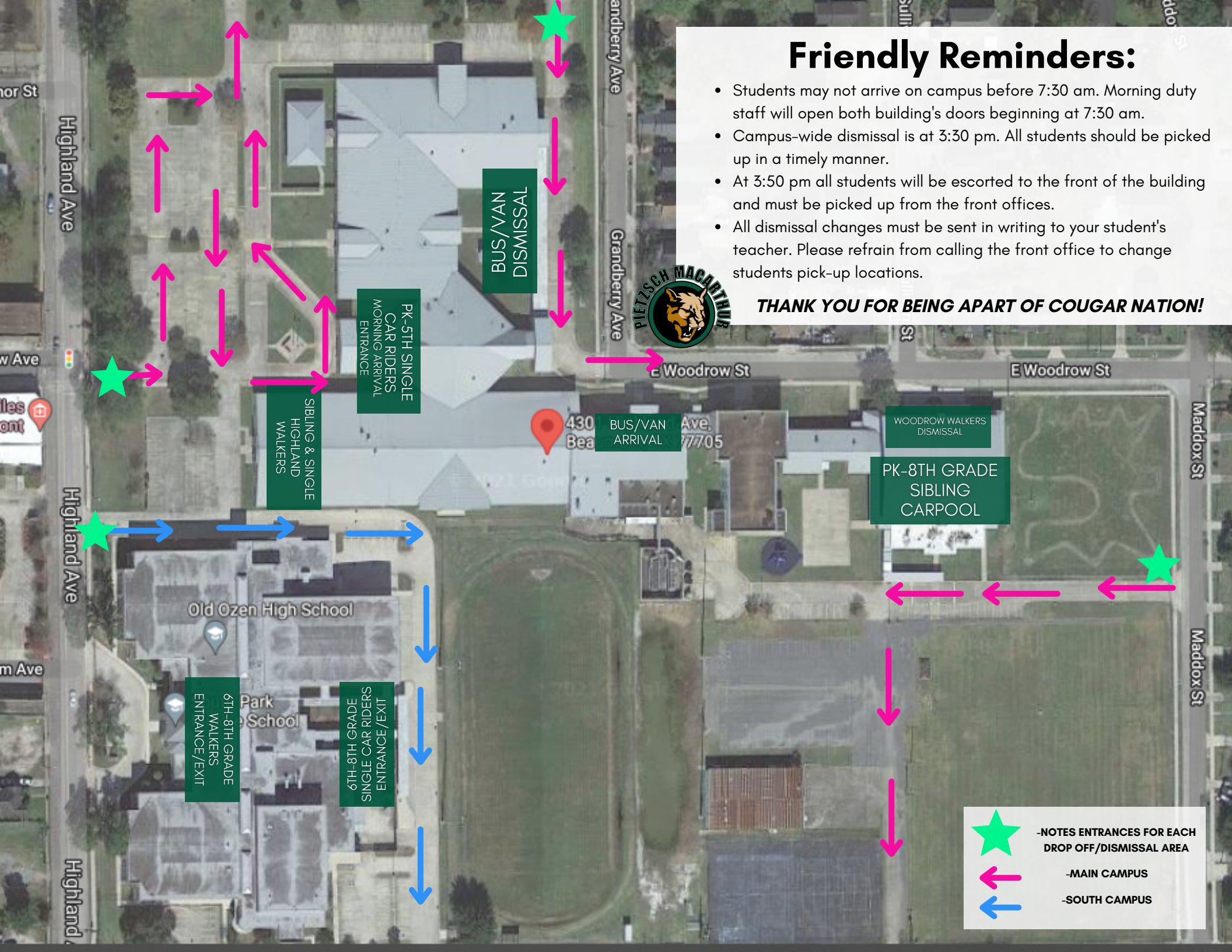


Friendly Reminders:

- Students may not arrive on campus before 7:30 am. Morning duty staff will open both building's doors beginning at 7:30 am.
- Campus-wide dismissal is at 3:30 pm. All students should be picked up in a timely manner.
- At 3:50 pm all students will be escorted to the front of the building and must be picked up from the front offices.
- All dismissal changes must be sent in writing to your student's teacher. Please refrain from calling the front office to change students pick-up locations.

THANK YOU FOR BEING A PART OF COUGAR NATION!



**BUS/VAN
DISMISSAL**

**PK-5TH SINGLE
CAR RIDERS
MORNING ARRIVAL
ENTRANCE**

**SIBLING & SINGLE
HIGHLAND
WALKERS**

**BUS/VAN
ARRIVAL**


**WOODROW WALKERS
DISMISSAL**


**PK-8TH GRADE
SIBLING
CARPOOL**


Old Ozen High School

**6TH-8TH GRADE
WALKERS
ENTRANCE/EXIT**

**6TH-8TH GRADE
SINGLE CAR RIDERS
ENTRANCE/EXIT**

 -NOTES ENTRANCES FOR EACH DROP OFF/DISMISSAL AREA

 -MAIN CAMPUS

 -SOUTH CAMPUS