

PES
School Newsletter



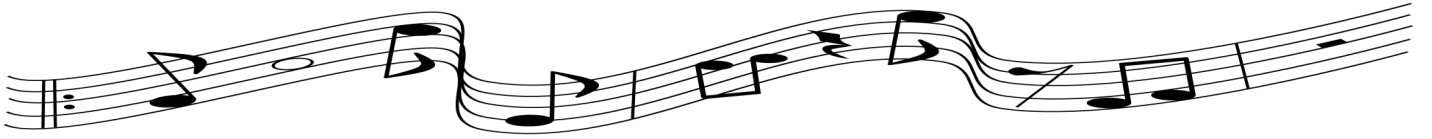
MON	TUE	WED	THUR	FRI
2 NO SCHOOL Grading Day	3	4 Beauty & the Beast Jr Play 	5	6
9	10 PES Band & Choir Concert 7pm FOOD DRIVE 9th - 13th	11	12	13 OBOB Meet
16 PES Winter Program: 6:00 PM-2nd 7:00 PM-3rd	17 PES Winter Program: 6:00 PM-4th 7:00 PM-5th HOLIDAY SPIRIT WEEK	18	19 Fancy Schmancy Day 2nd Grade	20 Last Day before Winter Break



December 23rd-January 3rd

January Dates:
1/6/25- School Resumes
1/20/25- NO SCHOOL- Holiday
1/24/25- NO SCHOOL- Grading
1/27-31-Great Kindness Week





Winter Programs

Dec 10th 7pm in the MPR
PES Band, Choir & Recorder Concert

December 16th
2nd Grade-6pm
3rd Grade-7pm

December 17th
4th Grade- 6pm
5th Grade- 7pm



PES Holiday Spirit Week

Monday 16th- Holiday Headwear  
Santa Hat, Elf Hat, Reindeer Antlers, festive beanies Etc

Tuesday 17th- Holiday Sweater 

Wednesday 18th- Red & Green 

Thursday 19th- Dress to Impress 

Friday 20th- Favorite Pajamas 

Coin Drive Winners!

2nd Grade: Mrs. Beachy

3rd Grade: Ms. Gonzales

4th Grade: Mrs. Rutledge

5th Grade: Mrs. Buchanan

Grand Total: \$ 2340.79

Our students did great! Thank you for helping Philomath Elementary, as we stride to reach our goal of reducing the cost of our yearbook.

Classroom Parties...

If you have any questions please reach out to your students' teacher for holiday party plans.

A reminder all treats must be store bought.



A reminder to parents, PES does not have supervision on campus for students until 7:30 am and our building does not open for breakfast until 7:40 am. If students show up early, they are sitting outside in the cold and alone. Please be mindful of the time when dropping off. With the days getting colder please help your student remember to bring a jacket every day. Gloves and beanies are also a good idea! Thank you!



November Character Trait: Gratitude



T-shirt Orders.....

Our first round of T-Shirt orders will close December 20th, it will reopen after the 1st of the year. You can order online at Lesandbobs.com



OBOB update:

We are excited to have 15 teams at PES this year for Oregon Battle of the Books (OBOB). Teams are busy reading the 16 books and practicing questions. The school competition will begin on **January 31st.**

We are looking for a volunteer coach for several teams. If you are interested in working with a group of students to support them in their OBOB journey, please contact Mrs. Bell for more information molly.bell@philomath.k12.or.us



Philomath Elementary School Food Drive December 9th-13th

This year our school is participating in a project to help families in our community.

To do this, we will be sponsoring a food and hygiene drive here at PES for the Philomath Food Bank.

During the week of *December 9th-13th*, if you would like to participate, please send in your item/s with your child.

*****Please check expiration dates on food items.***

Thank you in advance for your help with this project for our community.

Sincerely,

The Philomath Elementary Staff

The Philomath Food Bank has a great need for:

Canned: ***Meat, Fish and Vegetables***

Condiments: ***Mustard, Ketchup, Pickles, etc.***

Canned entrees: ***Spaghetti, Corned beef hash, etc.***

Boxed entrees: ***Rice-a-roni, Hamburger Helper, etc.***

Ready to Eat Soups, Jams, Jellies, syrups

Laundry Soap: ***Powdered or Pods***

Personal care items: ***Toilet paper, Shampoo, Toothpaste, Soap, Disposable razors, etc.***

Please Note:

We prefer small family-sized items, rather than bulk-sized items.

We cannot distribute perishables, institutional sizes, home-canned foods, food without original labels, or previously opened packages.



PES SWAG

If you would like to order swag for your student you may send cash, check, call or stop by with your debit/credit card to pay.

Swag will be available all year.

- T-shirts**
 Short Sleeve- \$10
 Long Sleeve- \$15
Sweatshirts
 Crew Necks- \$25
 Hoodies- \$35
 Hats- \$15
 Beanies- \$17
 Tote Bags- \$5
 Water Bottles- \$4
 Lanyards- \$3
 Wristbands- \$2