



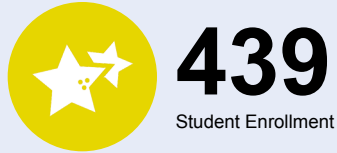
OREGON AT-A-GLANCE SCHOOL PROFILE

Witch Hazel Elementary School

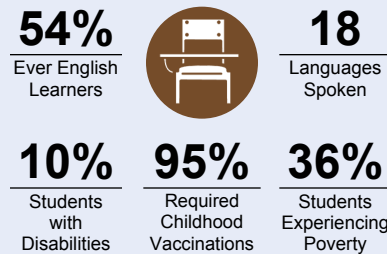
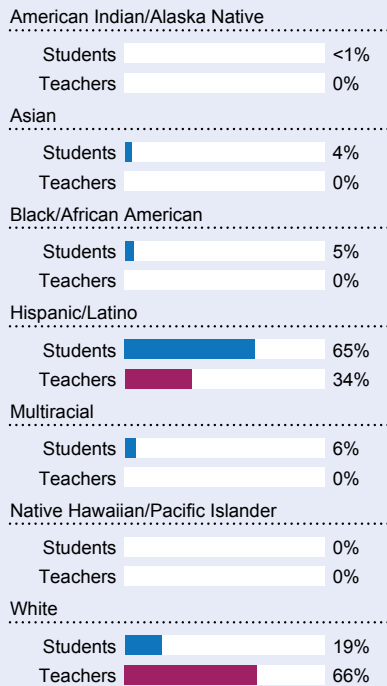
PRINCIPAL: Deborah Alvarado | GRADES: K-6 | 4950 SE Davis Rd, Hillsboro 97123 | 503-844-1610



Students We Serve



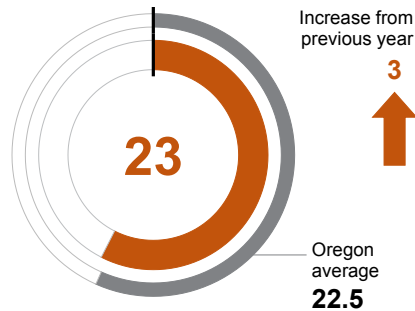
DEMOGRAPHICS



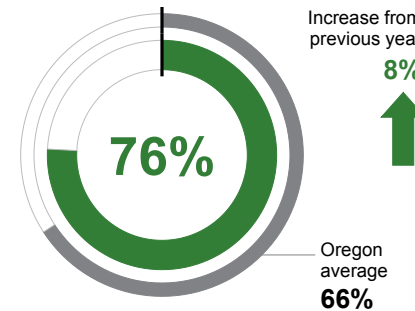
*<10 students or data unavailable

School Environment

CLASS SIZE
Median class size.



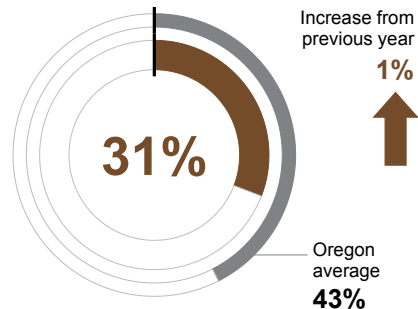
REGULAR ATTENDERS
Students who attended more than 90% of their enrolled school days.



Academic Success

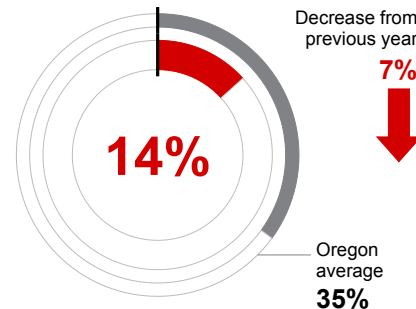
ENGLISH LANGUAGE ARTS

Students meeting state grade-level expectations.



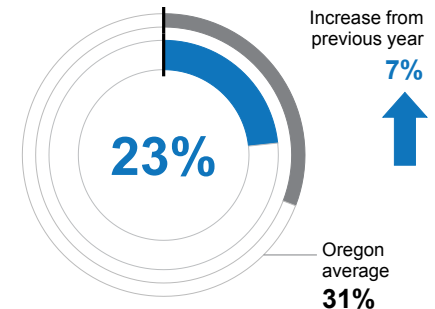
MATHEMATICS

Students meeting state grade-level expectations.



SCIENCE

Students meeting state grade-level expectations.



School Goals

Witch Hazel Elementary focuses on an inclusive education that offers students an opportunity to share their unique strengths and culture while building a compassionate and curious community of learners. Together, we can and will sustain a school culture of high academic expectations for all, create a safe community where individual strengths are honored, and grow global leaders who are college and career ready. We do this by creating equitable classroom experiences and knowing each child by name, strength, and need.

State Goals

The Oregon Department of Education is collaborating with school districts and communities across the state to achieve a 90% on-time graduation rate by 2027. Grounded in the pillars of Academic Excellence, Belonging and Wellness, and Reimagined Accountability, ODE prioritizes evidence-based practices to boost early literacy, attendance, and student engagement. We are committed to closing opportunity and achievement gaps for marginalized students and securing long-term success for all of Oregon's learners by investing in culturally responsive practices, fostering inclusive environments and always driving for continuous improvement.

Safe & Welcoming Environment

We strive to create a safe and welcoming school by knowing each student and their family by name, strength, and need, and actively supporting families in accessing community resources. Witch Hazel is fortunate to have a Community Care Specialist with a mental health focus, and an on-site Family Outreach Liaison. We have a Wellness Instructor, full-time School Counselor, and Student Success Coach - all of whom work together with your child's classroom team to support access to education and resources. All safety recommendations are followed in accordance with the Oregon Department of Education.



OREGON AT-A-GLANCE SCHOOL PROFILE CONTINUED

Witch Hazel Elementary School

Outcomes

Our Staff (rounded FTE)



25
Teachers



12
Educational assistants



1
Counselors/
Psychologists/
Social Workers



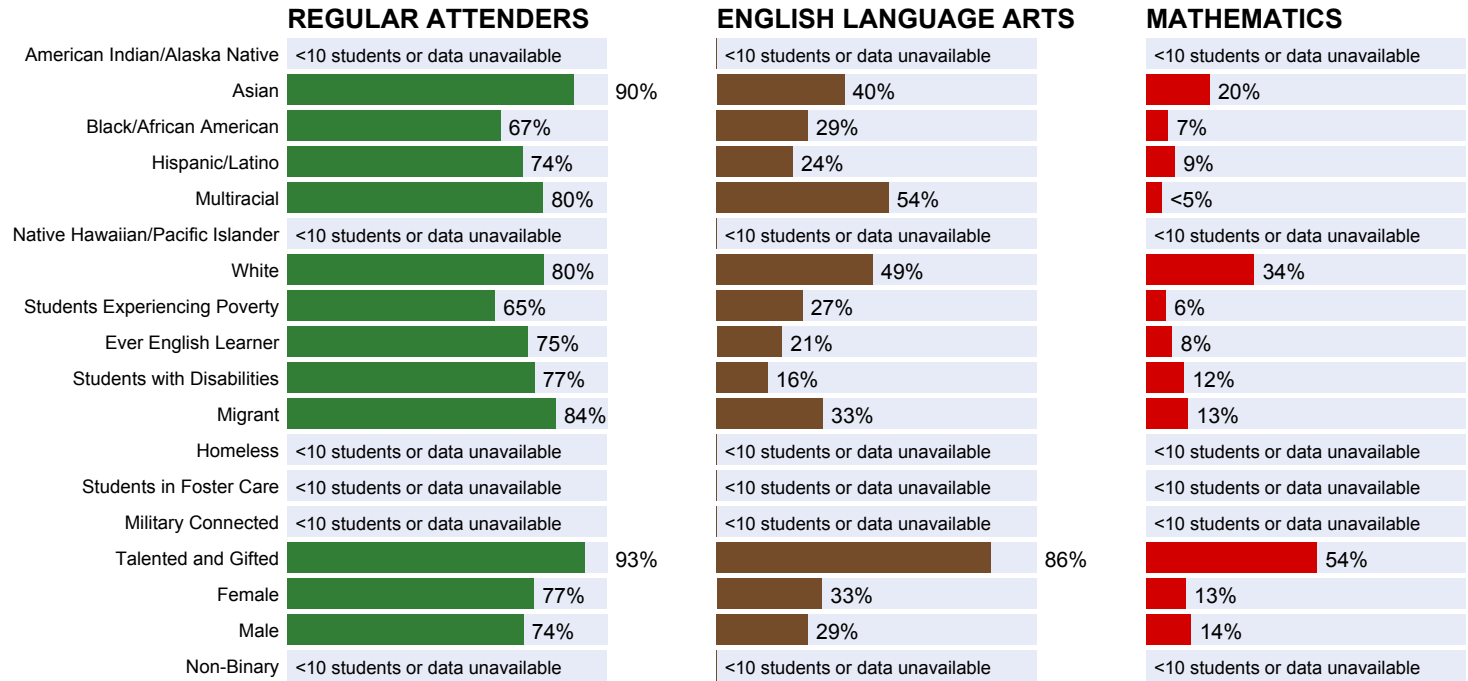
91%
Average teacher retention rate over the past three years



54%
% of licensed teachers with more than 3 years of experience



No
Same principal in the last 3 years



About Our School

BULLYING, HARASSMENT, AND SAFETY POLICIES

We have a full-time counselor who supports whole and small group lessons regarding issues of bullying, harassment, and safety; School-wide Morning Meetings to support peer-to-peer relationships as well as broader Social-Emotional Needs; Tech safety lessons taught during Media special; Positive Behavior Interventions and Support; Wellness Center; Trauma-Informed Care approach; and a full-time Student Success Coach.

EXTRACURRICULAR ACTIVITIES

We are proud of our partnerships with the Alaska Airlines Aviation Day program and the Oregon Museum of Science Industry (OMSI). We also partner with Community Action Head Start for Pre-Kindergarten onsite, as well as Adelante Mujeres for their Chicas Program. We are a certified AVID Elementary and a Dual Language school. We host multiple after-school programs, including a variety of STEM and Migrant academic enrichment opportunities. We also offer Champions Child Care on-site. Grant-funded special interest activities are offered based on student interest.

PARENT ENGAGEMENT

We host evening events for families including celebrations of cultures and academic achievement that highlight our use of AVID strategies school-wide. Events include Family Education to support access to school resources and systems, monthly Celebration Assemblies, and Coffee with the Principal. We also have an active and supportive Parent Group whose meetings are conducted bilingually in Spanish and English. Parent-led activities enrich our community and emphasize family cultures.

COMMUNITY ENGAGEMENT

We offer evening events, including AVID and Title I service information, Wolf Walk, Guest Speakers, and Focused Care & Support Team to help meet the individual and unique needs of each family. Our Community Care Specialist connects families with resources and communicates regularly with parents about community events. Our yearly family survey ensures our community has a voice and can add to our collective efforts in support of students' growth.