

# IN THE LOOP

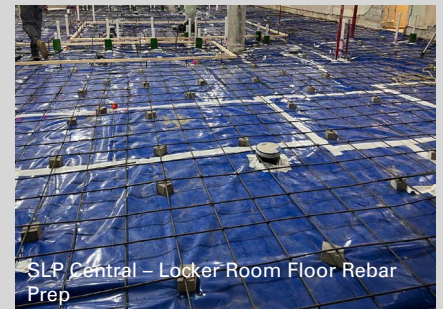
ST. LOUIS PARK SCHOOLS



SLP Central Community Center – Locker Room



SLP Park Central Operations Center – 2nd Level Open Office Area



SLP Central – Locker Room Floor Rebar Prep



SLP Park Central Operations Center – 2nd Level Office



SLP Park Central Operations Center – Exterior and Site Plantings

## Project Milestones

- 11.01.24 – SLP Central Community Center Exterior Gas Meter Installed.
- 11.13.24 – SLP Park Central Operations Center Generator Installed.
- 11.14.24 – SLP Central Community Center Locker Room CMU Walls Began.
- 11.22.24 – SLP Park Central Operations Center Site Plantings Installed.

## Construction Progress

### Park Central Operations Center

- Construction Duration: 12/2023 – 1/2025
- Flooring install is 50% complete.
- Casework install is 90% complete.
- Bathroom partition install is 100% complete.

### SLP Central Community Center

- Construction Duration: 7/2024 – 8/2025
- Pool gutter restoration is 50% complete.
- Locker room MEP installation is 15% complete.

## Fun Fact

The new Park Central Operations Center will have 14 new trees planted!