

PROFESSIONAL



DEVELOPMENT PLAN



INNOVATION2030 STRATEGIC PLAN

MISSION

District 6 engages every student in a personalized, well-rounded and excellent education, preparing students to be college and career ready.

VISION

District 6 engages, empowers and inspires today's students in partnership with families and communities to succeed in tomorrow's world.

STUDENT LEARNING & ACHIEVEMENT

District 6 engages all students in a challenging and personalized education, preparing each student to be career and college ready.

- ➔ **Goal 1:** Provide a personalized learning experience so all students graduate on time and are college and career ready.
- ➔ **Goal 2:** Implement consistent and coherent aligned curriculum, assessment and instructional practices that are research-based to ensure all students learn.

OPERATIONAL & ORGANIZATIONAL EFFECTIVENESS

District 6 ensures innovation, transparency and accountability to our community through measurable outcomes and continuous improvement.

- ➔ **Goal 1:** Align district resources to meet the needs of all students.
- ➔ **Goal 2:** Maximize the recruitment, hiring, and retention of all employees in the district.

CLIMATE AND CULTURE

District 6 cultivates a safe, healthy and inclusive learning environment for all, embracing our diversity and engaging all stakeholders.

- ➔ **Goal 1:** Develop cultural responsiveness throughout the organization.
- ➔ **Goal 2:** Support the social and emotional wellbeing of students and staff.

STRENGTHENING PARTNERSHIPS

District 6 enhances student success by communicating, engaging and collaborating with our communities and school partners.

- ➔ **Goal 1:** Strengthen relationships with parents and families.
- ➔ **Goal 2:** Communicate and collaborate with external stakeholders including business, local government and community organizations.

PROFESSIONAL DEVELOPMENT IS:



TRAINING



MENTORING



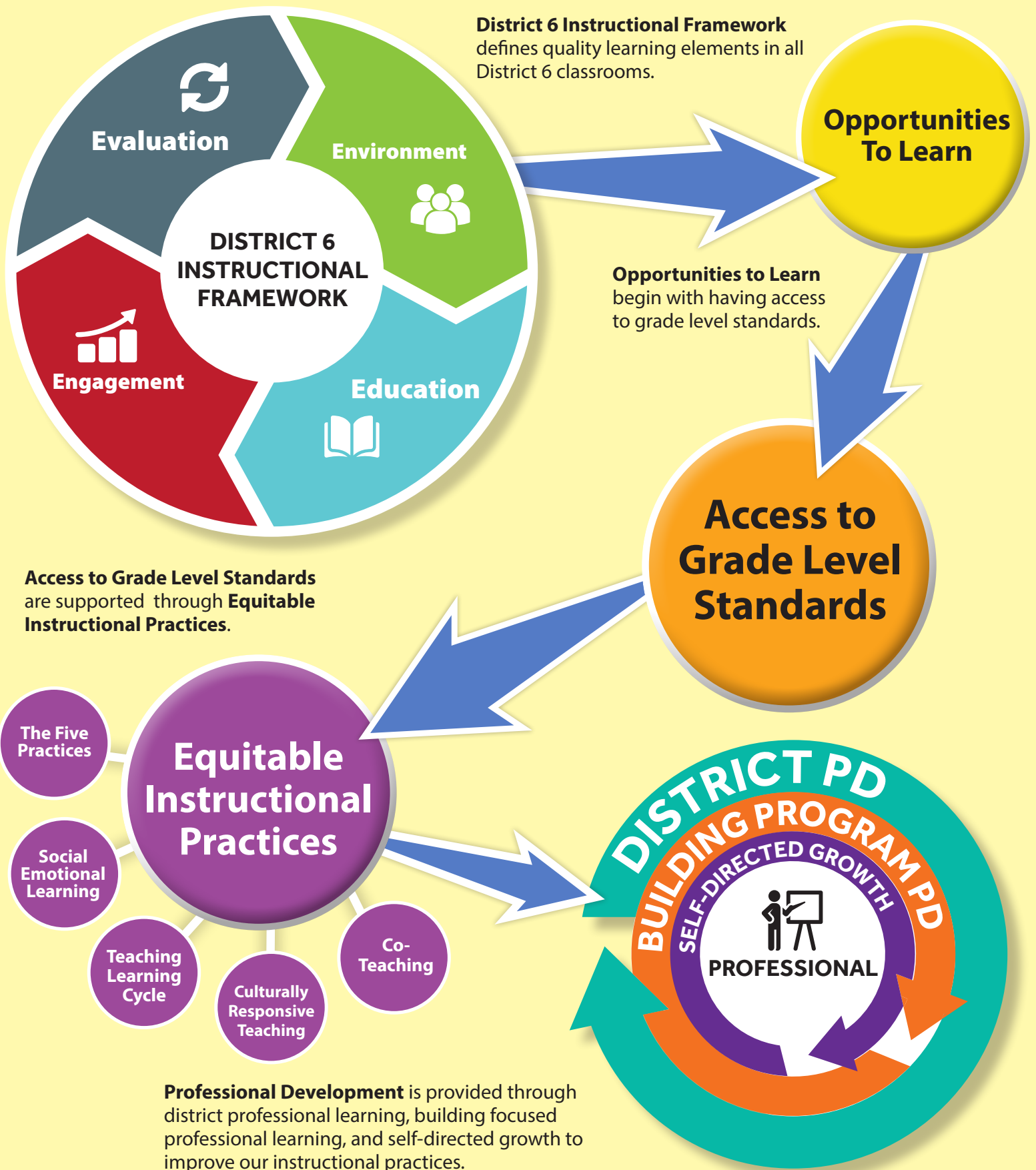
COACHING



COLLABORATING



PROFESSIONAL DEVELOPMENT ROADMAP: *"Opportunities to learn in District 6"*



	Date	Event	Time	Intended Participants/Focus Area
JULY	July 15	Principal Professional Development	8 - 4:30 pm	Secondary Principals • <i>Topics to Include: TBD</i>
	July 16-17	Principal Professional Development	8 - 4:30 pm	Elementary/K8 Principals • <i>Topics to Include: TBD</i>
	July 30-31	New Professional Academy	7:30 - 4:30 pm	New Professionals <i>Curriculum, Instructional Practices/Framework</i>
AUGUST	August 1-2	New Professional Academy	7:30 - 4:30 pm	New Professionals <i>Curriculum, Instructional Practices/Framework</i>
	August 6	Welcome Back District Professional Development Day	8:00 - 4:00 pm	All Teachers and SSPs <i>District Directed Professional Development</i>
	August 9	Professional Development Day	Building Determined	<i>Building Directed Professional Development</i>
	August 12	Late Start Monday	Morning	<i>Teacher Directed Professional Development</i>
	August 19	Late Start Monday	Morning	<i>Building Directed Professional Development</i>
	August 26	Late Start Monday	Morning	<i>Teacher Directed Professional Development</i>
		Content Leaders - Elementary Literacy	4:30 - 6:30 pm	Elementary Literacy Leaders and Administrators <i>ELA Best Practices</i>
Content Leaders - Elementary Math		4:30 - 6:30 pm	Elementary Math Leaders and Administrators <i>Standards and Instruction</i>	
SEPTEMBER	September 4	Principal Professional Development	7:30 - 4:00 pm	K-12 Principals <i>Topics to Include: Literacy, Math, and Equitable Grading Practices</i>
	September 9	Late Start Monday	Late Start Monday	<i>Building Directed Professional Development</i>
		Department Chair Leaders - Secondary ELA	4:30 - 6:00 pm	Elementary Literacy Leaders and Administrators <i>ELA Best Practices</i>
		Department Chair Leaders - Secondary Math	4:30 - 6:00 pm	Secondary Math Leaders and Administrators <i>PLC, Standards, and Content Work</i>
	September 10	Department Chair Leaders - Secondary Social Studies	4:30 - 5:30 pm	Secondary Social Studies Leaders and Administrators <i>PLC, Standards, Instruction</i>
	September 16	Late Start Monday	Morning	<i>Teacher Directed Professional Development</i>
	September 17	Department Chair Leaders - Secondary Science	4:30 - 5:30 pm	Secondary Science Leaders and Administrators <i>PLC, Standards, Instruction</i>
	September 23	Professional Development Day	Building Determined	<i>AM - Building Directed Professional Development - PBIS/MTSS</i> <i>PM: Teacher Directed Professional Development/Plan</i>
	September 26	Equify	4:30 - 6:30 pm	School Equity Teams • <i>Equity Team Planning</i>
	September 30	Late Start Monday	Late Start Monday	<i>Building Directed Professional Development</i>
Content Leaders - Elementary Literacy		4:30 - 6:00 pm	Elementary Literacy Leaders and Administrators <i>ELA Best Practices</i>	
Content Leaders - Elementary Literacy		4:30 - 6:00 pm	Elementary Math Leaders and Administrators <i>Standards and Instruction</i>	
OCTOBER	October 2	Principal Professional Development	7:30 - 11:30 am	K-12 Principals <i>Topics to Include: Literacy, Math, and Equitable Grading Practices</i>
	October 7	Late Start Monday	Morning	<i>Teacher Directed Professional Development</i>
	October 11	Professional Development Day	Building Determined	All Elementary and K8 Teachers and SSPs <i>Am - Teacher Prep for Conferences</i> PM - <i>Conferences</i> All Secondary Teachers and SSPs All Day: <i>Building Directed Professional Development</i>
	October 14	Professional Development Day	8:00 - 11:30 am	All Teachers and SSPs <i>District Directed Professional Development</i>
			12:00 - 4:00 pm	All Teachers and SSPs <i>Teacher Directed Professional Development</i>
	October 28	Late Start Monday	Morning	<i>Teacher Directed Professional Development</i>
		Content Leaders - Elementary Literacy	4:30 - 6:30 pm	Elementary Literacy Leaders and Administrators <i>Standards and Instruction</i>
Content Leaders - Elementary Math		4:30 - 6:30 pm	Elementary Math Leaders and Administrators <i>Standards and Instruction</i>	
NOVEMBER	November 4	Late Start Monday	Morning	<i>Building Directed Professional Development</i>
	November 6	Principal Professional Development	7:30 - 11:30 am	K-12 Principals <i>Topics to Include: Literacy, Math, and Equitable Grading Practices</i>
	November 11	Late Start Monday	Morning	<i>Teacher Directed Professional Development</i>
	November 18	Late Start Monday	Morning	<i>Teacher Directed Professional Development</i>
	November 18	Content Leaders - Elementary Literacy	4:30 - 6:30 pm	Elementary Literacy Leaders and Administrators <i>ELA Best Practices</i>
		Content Leaders - Elementary Math	4:30 - 6:30 pm	Elementary Math Leaders and Administrators <i>Standards and Instruction</i>

	Date	Event	Time	Intended Participants/Focus Area	
DECEMBER	December 2	Late Start Monday	Morning	Building Directed Professional Development	
	December 4	Principal Professional Development	7:30 - 11:30 am	K-12 Principals • <i>Topics to Include: Literacy, Math, and Equitable Grading Practices</i>	
	December 5	Equify	4:30 - 6:30 pm	School Equity Teams • <i>Student Voice</i>	
	December 9	Late Start Monday	Morning	Teacher Directed Professional Development	
	December 16	Late Start Monday	Morning	Teacher Directed Professional Development	
	December 16	Content Leaders - Elementary Literacy		4:30 - 6:30 pm	Elementary Literacy Leaders and Administrators • <i>ELA Best Practices</i>
		Content Leaders - Elementary Math		4:30 - 6:30 pm	Elementary Math Leaders and Administrators • <i>Standards and Instruction</i>
	December 20	Professional Development Day		8:00 - 11:30 am Group locations on PD Matrix	All Elementary and K8 Teachers and SSPs District Directed Professional Development
1:00 - 4:00 pm				All Elementary and K8 Teachers and SSPs Teacher Directed Professional Development	
All Day				All Secondary Teachers and SSPs • Teacher Directed Professional Development	
JANUARY	January 6	Professional Development Day	Building Determined	AM - Building Directed Professional Development - PBIS/MTSS PM - Teacher Directed Professional Development/Plan	
	January 13	Late Start Monday	Morning	Teacher Directed Professional Development	
	January 27	Late Start Monday		Morning	Building Directed Professional Development
		Content Leaders - Elementary Literacy		4:30 - 6:30 pm	Elementary Literacy Leaders and Administrators • <i>ELA Best Practices</i>
		Content Leaders - Math Literacy		4:30 - 6:30 pm	Elementary Math Leaders and Administrators • <i>Standards and Instruction</i>
FEBRUARY	February 3	P/T Conference		All Day	All Elementary and K8 Teachers and SSPs AM - <i>Teacher Prep for Conferences</i> PM - <i>Conferences</i>
		Professional Development Day		8:00 - 11:30 am Group locations on PD Matrix	All Secondary Teachers and SSPs District Directed Professional Development
				12:00 - 4:00 pm	All Secondary Teachers and SSPs • Building Directed Professional Development
	February 5	Principal Professional Development	7:30 - 4:00 pm	K-12 Principals • <i>Topics to Include: Literacy, Math, and Equitable Grading Practices</i>	
	February 10	Late Start Monday	Morning	Teacher Directed Professional Development	
	February 10	Department Chair Leaders - Secondary ELA		4:30 - 6:00 pm	Secondary Literacy Leaders and Administrators • <i>PLCs, Standards, and Content Work</i>
		Department Chair Leaders - Secondary Math		4:30 - 6:00 pm	Secondary Math Leaders and Administrators • <i>PLCs, Standards, and Content Work</i>
	February 11	Depart Chair Leaders - Secondary Social Studies	4:30 - 5:30 pm	Secondary Social Studies Leaders and Administrators <i>PLCs, Standards, and Content Work</i>	
	February 18	Depart Chair Leaders - Secondary Science	4:30 - 5:30 pm	Secondary Science Leaders and Administrators <i>PLCs, Standards, and Content Work</i>	
	February 20	Equify	4:30 - 6:30 pm	School Equity Teams • <i>Pressing Issues in Education</i>	
	February 24	Late Start Monday	Morning	Building Directed Professional Development	
	February 24	Content Leaders - Elementary Literacy		4:30 - 6:30 pm	Elementary Literacy Leaders and Administrators • <i>ELA Best Practices</i>
Content Leaders - Elementary Math		4:30 - 6:30 pm	Elementary Math Leaders and Administrators • <i>Standards and Instruction</i>		
MARCH	March 3	Late Start Monday	Morning	Building Directed Professional Development	
	March 5	Principal Professional Development	7:30 - 11:30 am	K-12 Principals • <i>Topics to Include: Literacy, Math, and Equitable Grading Practices</i>	
	March 7	Professional Development Day		8:00 - 11:30 am Group locations on PD Matrix	All Teachers and SSPs District Directed Professional Development
				12:00 - 4:00 pm	All Teachers and SSPs • Teacher Directed Professional Development
	March 10	Late Start Monday	Morning	Teacher Directed Professional Development	
	March 24	Late Start Monday		Morning	Building Directed Professional Development • CMAS/PSAT/SAT Training
		Content Leaders - Elementary Literacy		4:30 - 6:30 pm	Elementary Literacy Leaders and Administrators • <i>ELA Best Practices</i>
Content Leaders - Elementary Math		4:30 - 6:30 pm	Elementary Math Leaders and Administrators • <i>Standards and Instruction</i>		
March 31	Late Start Monday	Morning	Building Directed Professional Development • CMAS/PSAT/SAT Training		
APRIL	April 2	Principal Professional Development	7:30 - 11:30 am	K-12 Principals • <i>Topics to Include: Literacy, Math, and Equitable Grading Practices</i>	
	April 7	Late Start Monday	Morning	Teacher Directed Professional Development	
	April 14	Late Start Monday	Morning	Building Directed Professional Development	
	April 17	Equify	4:30-6:30 pm	School Equity Teams • <i>Panorama Data</i>	
	April 21	Late Start Monday		Morning	Teacher Directed Professional Development
		Content Leaders - Elementary Literacy		4:30 - 6:30 pm	Elementary Literacy Leaders and Administrators • <i>ELA Best Practices</i>
		Content Leaders - Elementary Math		4:30 - 6:30 pm	Elementary Math Leaders and Administrators • <i>Standards and Instruction</i>
April 28	Late Start Monday	Morning	Building Directed Professional Development		
MAY	May 2	Professional Development Day	All Day	Building Directed Professional Development • Transitions Day	
	May 5	Late Start Monday	Morning	Teacher Directed Professional Development	
	May 7	Principal Professional Development	7:30 - 11:30 am	K-12 Principals • <i>Topics to Include: Literacy, Math, and Equitable Grading Practices</i>	
	May 12	Late Start Monday	Morning	Building Directed Professional Development	
	May 19	Late Start Monday	Morning	Teacher Directed Professional Development	