



Superintendent's Report to the Board of Trustees

November 21, 2024
Virginia Castro, Superintendent



Superintendent's Office

**Vision to
Learn** Green in
March!



Superintendent's Office

Superintendent Leadership Council

Next Meeting: December 3rd Exploring Artificial Intelligence, TREC, IT



Human Resources



**LAWNDALE**
ELEMENTARY SCHOOL DISTRICT

ABOVE & BEYOND RECOGNITION



Laura Maxwell
Teacher, Addams



Kimberly Goodar
Instructional Aide - Special Ed, Mitchell



Kisalyn Michael
Social Worker, FDR

November 2024
Employees of the Month

SPONSORED BY
SCHOOLS FIRST
FEDERAL CREDIT UNION



Human Resources



Hiring & Recruitment Videos

Food Service Assistant

Sub Custodian

Student Supervision Assistant

RAP Activity Specialist



Food Service Assistant



Application Deadline

11/26/2024 4:00 PM Pacific

Date Posted

11/19/2024

Contact

[Christian Beabes](#)

3109731300 50063

Number of Openings

2

Salary

Pay Range

18.91 - 24.15 Per Hour

Length of Work Year

10-month

Employment Type

Part Time

Human Resources

Hiring & Recruitment Videos



Human Resources

New Job Descriptions

**Pending Board Approval*

- Community Schools District Coordinator
- Community Schools Site Coordinator



Resolution 12 Retirement Incentive

**Pending Board Approval*

Email will be sent to staff 11/22

HR Must receive notifications 11/22-1/24/25

Certificated
Classified
Confidential/Management

Business- Rogers Admin Construction



Upcoming Critical Dates:

Dec. 10th - Furniture Installation

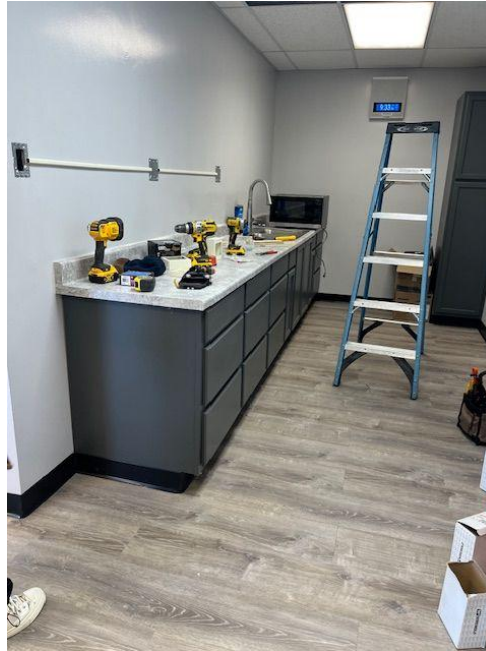
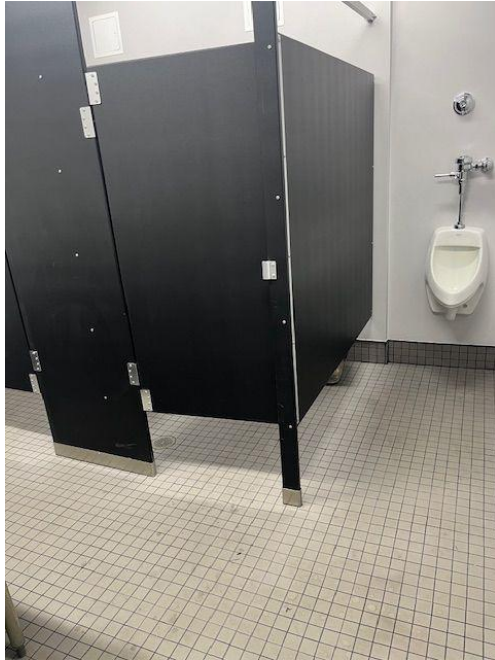
Dec. 16th - IT Installation

Dec. 27th - Moving back into building

Jan. 6th - Occupy building

Feb/March- Ribbon Cutting

Business- M&O Breakroom



Completed this week.

Still need to install AC unit and
assemble furniture.

Business- Twain Playground



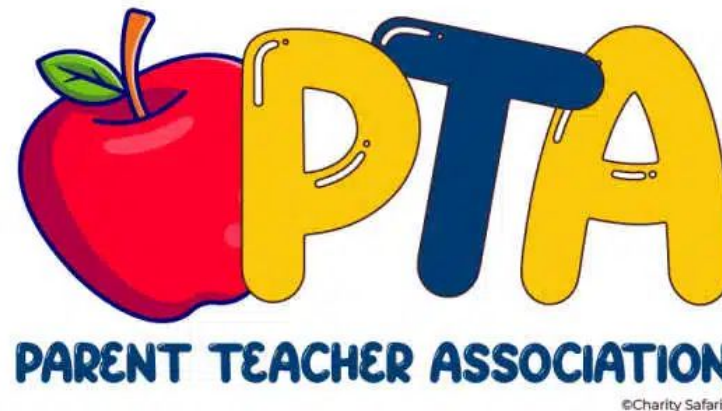
Tentative Completion Date:
Dec. 15

Business- PTA Meeting

Date of Meeting: Nov. 20th

Provided guidance on copyrights:

- Broadcasting live sporting events
- Movies

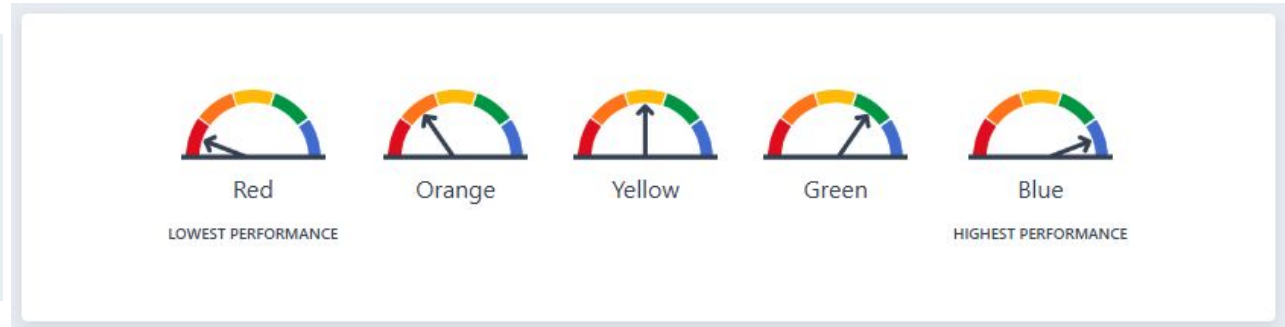


Educational Services



CA School Dashboard Public Release Today

- California's Accountability System, measuring performance on:
 - Current Year Results
 - Whether Results Improved from Prior Year
- Detailed Analysis will be presented during the LCAP Annual Update on February 6
- For Lawndale District and Specific School Reports, visit www.caschooldashboard.org



Educational Services

Academic Performance

NEW THIS YEAR: Long-term English Learners (LTEL) Indicator*

LEARN MORE English Language Arts

All Students State



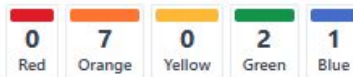
Orange

7.7 points below standard

Maintained 1.9 Points

EQUITY REPORT

Number of Student Groups in Each Color



[View More Details](#)

LEARN MORE Mathematics

All Students State



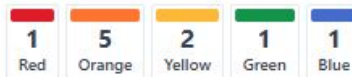
Yellow

39.7 points below standard

Increased 3 Points ⬆

EQUITY REPORT

Number of Student Groups in Each Color



[View More Details](#)

LEARN MORE English Learner Progress

All Students State



Orange

46.3% making progress

Declined 2.2% ⬇

LONG-TERM ENGLISH LEARNER PROGRESS



[View More Details](#)

For students who have not reclassified as fluent English proficient within seven (7) years

Educational Services

Academic Engagement and Conditions & Climate

