

# School Feature

# MARK TWAIN

## Elementary School

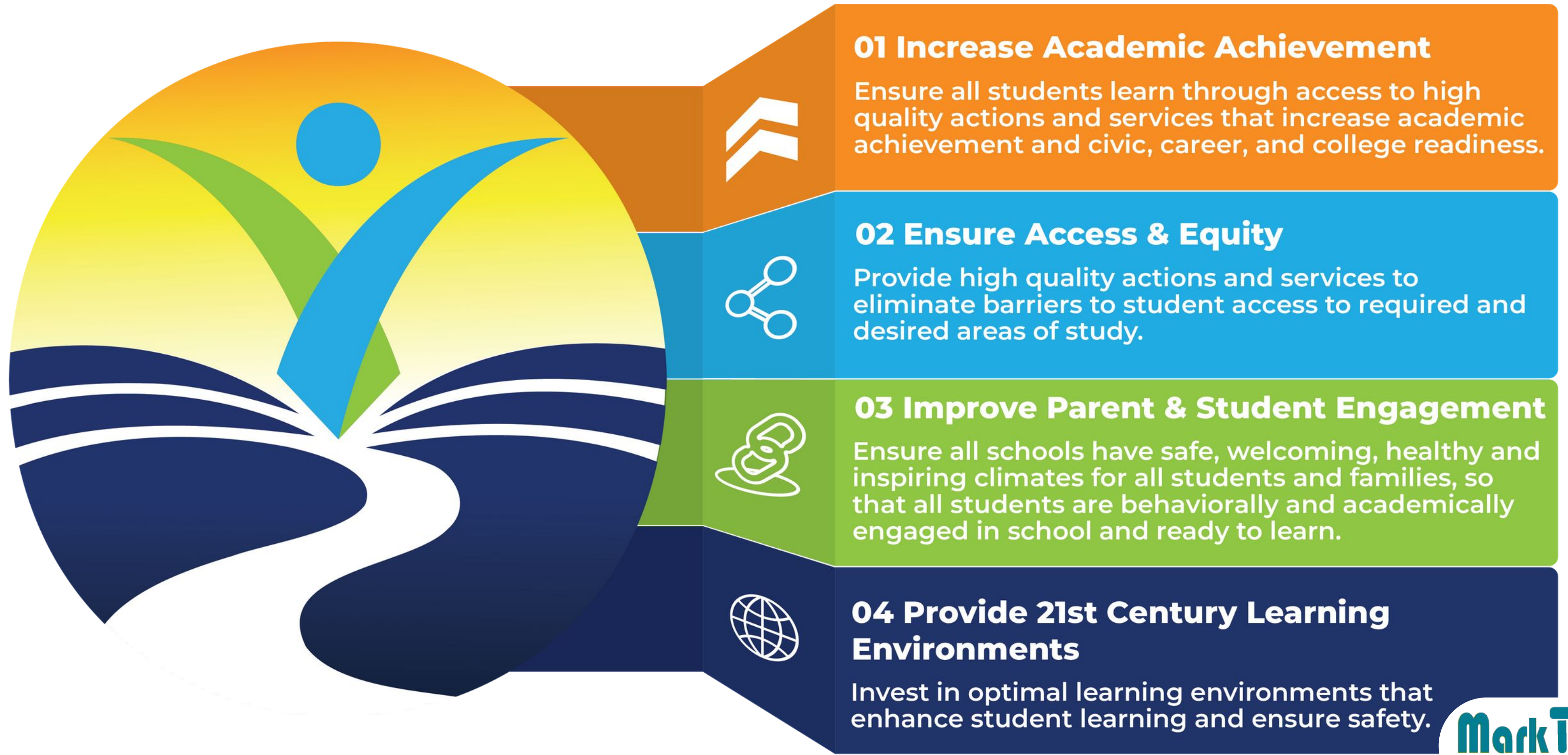
November 21, 2024

*Presented by*  
Michael Bosler  
Principal





# District Goals





# District Goal 01: Increase Academic Achievement

## Program Highlights

### Dual Immersion

- Biliteracy Pathway Recognition (5th)
- DI Awards Night
- New TK Program at Twain
- Intervention in Spanish



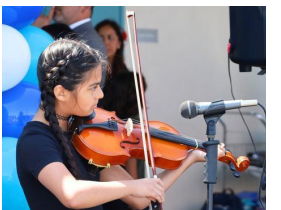
### Illustrative Math

- Professional Learning Community (PLC) implementation
- Participation in PLC at Work Conference



### Gifted and Talented Education

- Naglieri Nonverbal Ability Test
- 22 River Rafter qualified
  - Shared Science
  - Math enrichment
  - Book study with our GATE advocate
  - Field Trip



**Mark Twain**  
Elementary School



## District Goal 02: Ensure Equity & Access

# Program Highlights

### Emergent Bilingual Students

- Newcomer Groups
- ELD

### African American Students

- RISE (15 students)
- African American Parent Advisory Committee

### Cultural Inclusivity

- Monthly Cultural Awareness
  - Classroom Mini Lessons
- Spirit Weeks
- Lunch Recess Activities
- Trimester Family Movie Night (i.e., Wonder)





# District Goal 03: Improve Parent & Student Engagement

## Program Highlights

### PBIS Gold Recognition (Platinum 2025)

- OARS Store
- RowModel



### Attendance challenges - Miss School, Miss Out!

- Class challenges
- Spirit Weeks

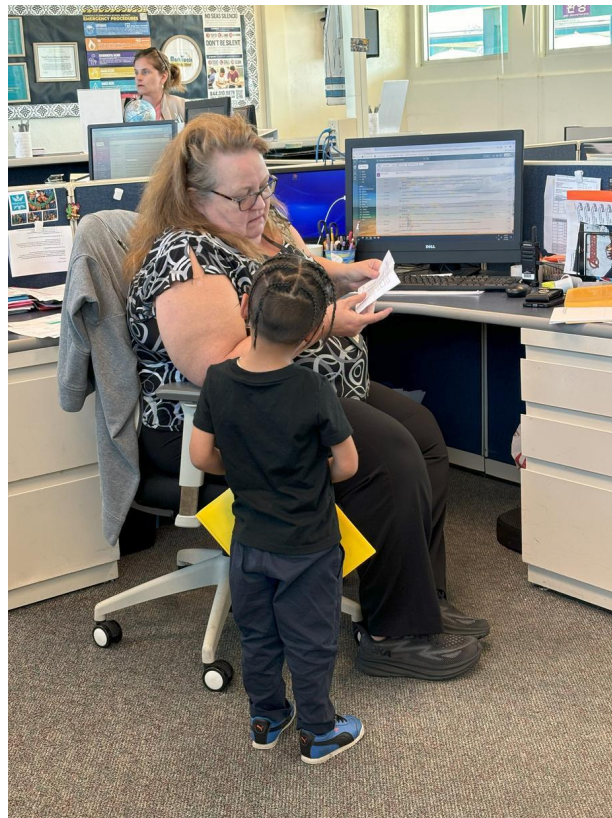
### Student Council

- 5th grade elected office
- 4th grade classroom representatives



### Community Involvement

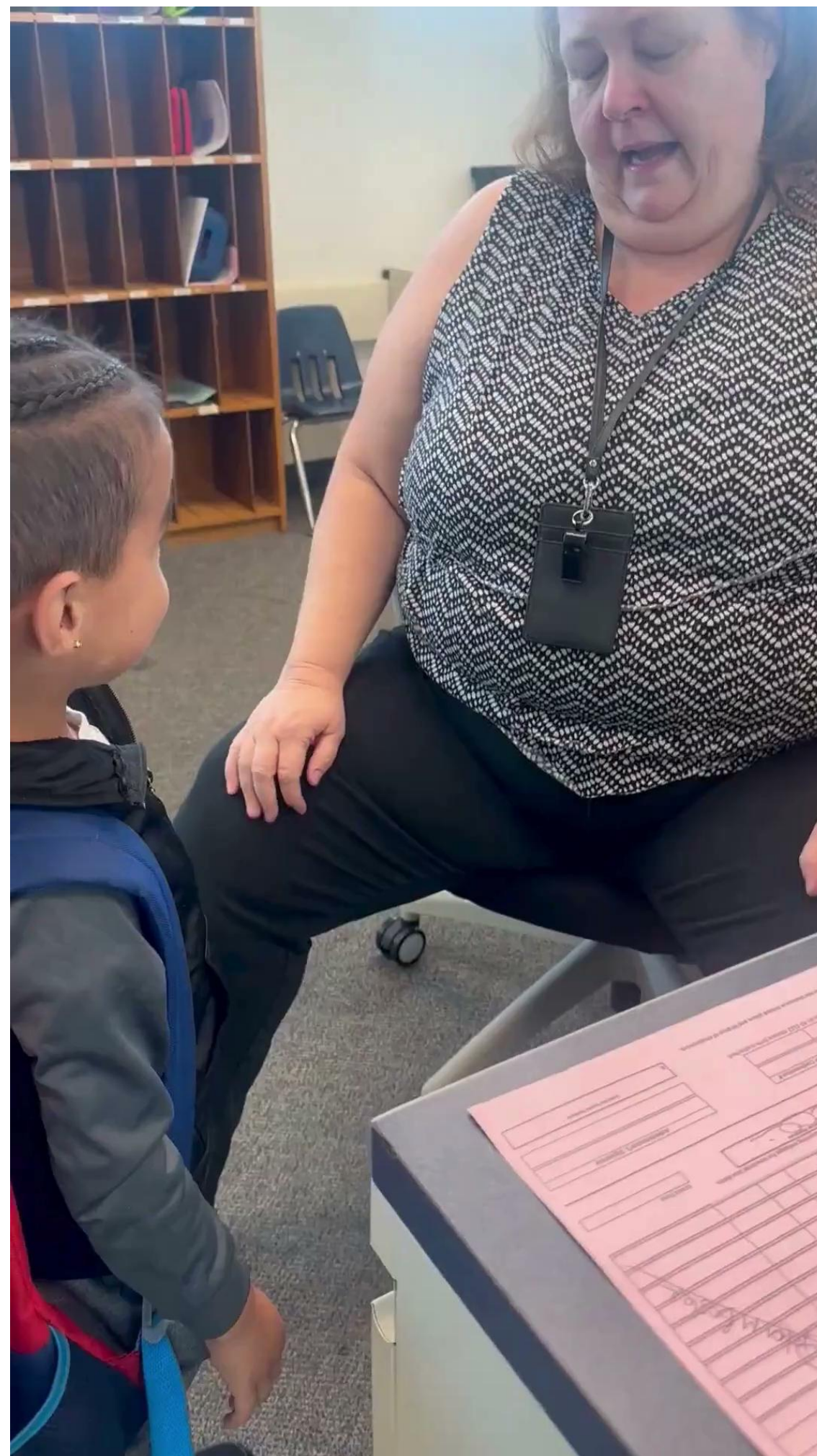
- Parent Teacher Association (PTA) - School of
- Community of Multilingual Families (ELAC)
- Parent Ambassador Leaders (PALs)







## Example of Rowmodel in action with Ms. Lisa, Office Manager





# District Goal 04: Provide 21st Century Learning Environments

## Program Highlights

### MakerSpace/TREC

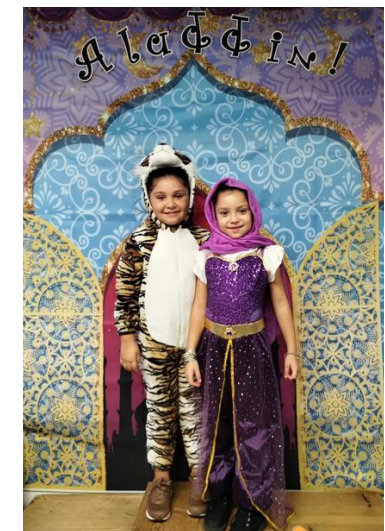
- Students are creating, collaborating, communicating, and thinking critically

### Field Trips

- Discovery Center
- Getty
- Torrance Cultural Arts Center
- Griffith Observatory
- El Camino Opera
- Reagan Library
- GATE: Columbia Memorial Space Center

### PS Arts

- Performance - Aladdin
- Fine arts
- Music
- PS Arts at lunch!



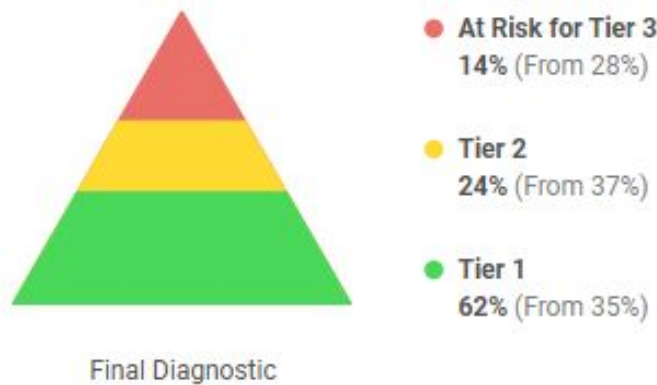


# School Highlights

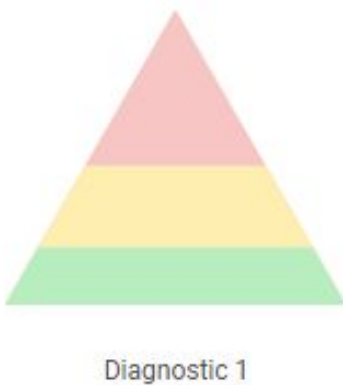


## Overall Academic Achievement

- **Educational Results Partnership’s Honor Roll**
  - High levels of student academic achievement, improvement in achievement levels and a reduction in achievement gaps.
- **Twain SBAC**
  - ELA increased 5.02%
  - Math increased 4.36%
  - Matching pre-Covid levels of achievement (2018-2019)
  - 7 students with perfect SBAC scores
- **i-Ready**
  - ELA - 35% (1st diagnostic) 62% (final diagnostic)
  - Math - 19% (1st diagnostic) 50% (final diagnostic)

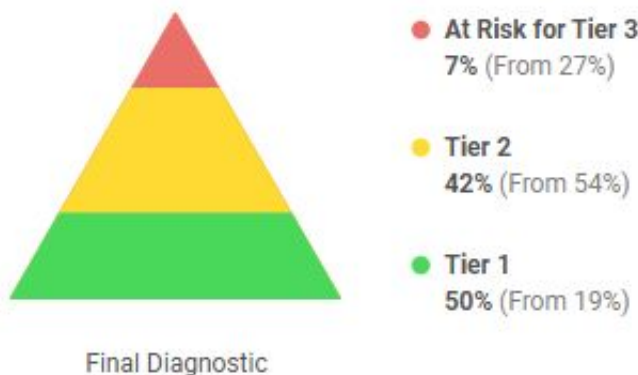


i-Ready ELA



| SBAC ELA 2024            |       | SBAC MATH 2024           |       |
|--------------------------|-------|--------------------------|-------|
| % OF STUDENTS PROFICIENT |       | % OF STUDENTS PROFICIENT |       |
| CA                       | 47%   | CA                       | 35.5% |
| LAWNDALE                 | 48.7% | LAWNDALE                 | 35.7  |
| MARK TWAIN               | 61.7% | MARK TWAIN               | 61%   |
| WISEBURN                 | 62.4% | WISEBURN                 | 50.1% |
| TORRANCE                 | 66.7% | TORRANCE                 | 60.2% |

## Goal - California Distinguished School



i-Ready Math





# School Highlights

## Positive School Culture

- Friday Assembly
- PTA Milage Club
- River Rafter of the Month Assemblies
- Second Step (SEL)
- RowModel Program (Check-in, Check-out)



## Total Enrollment

- Twain is now the largest elementary school in LESD
- Total enrollment is 589
  - 309 DI
  - 280 English

## New Construction

- Fencing
- Play structure
- AV in the Cafe/MPR

## Paying It Forward

- 2 resident teachers (Alder U)
- 4 student teachers



## Twain Signature Events

- Kinder Jumpstart
- Harvest Festival
- Veteran's Day Assembly
- Loved Ones Day
- Read Across America/Career Day
- DI Awards Night
- PTA's Twainchella
- 5th Grade End of Year Celebrations
  - Picnic
  - Field Day
  - Staff v. 5th grade Volleyball
  - Bridging Ceremony





# Focus of 2024-2025

## Data Informed Practices

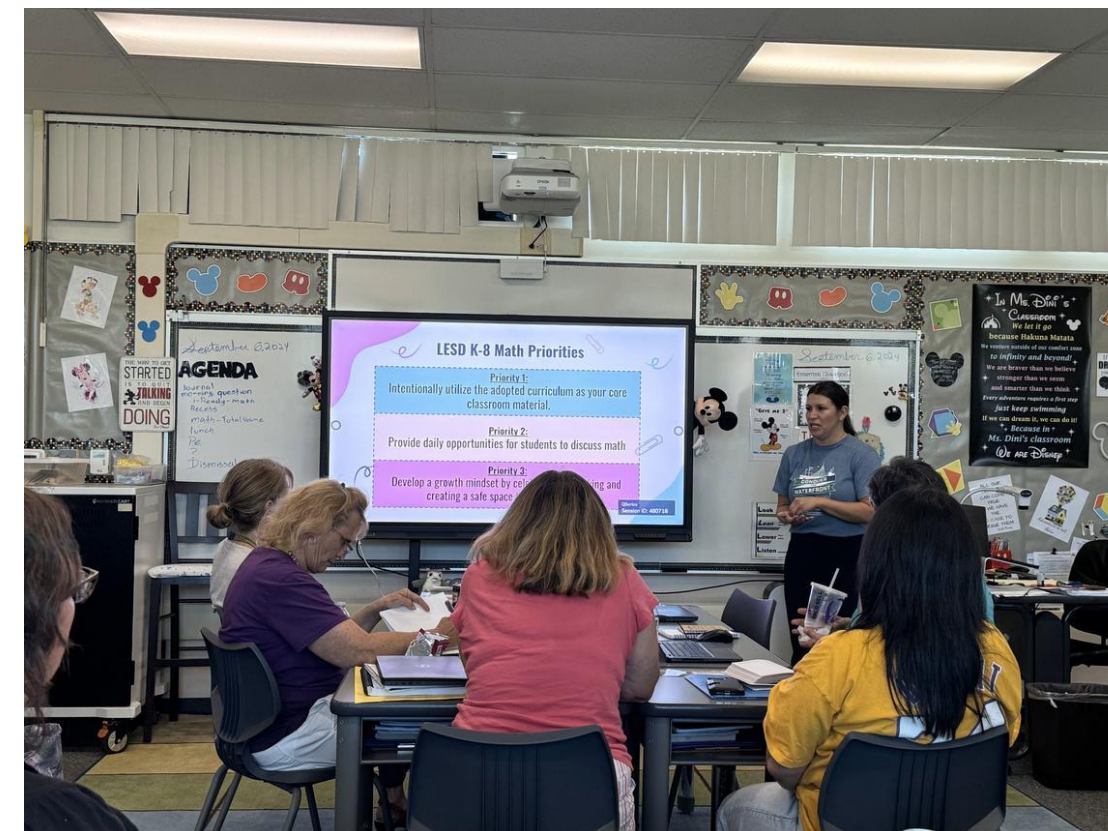
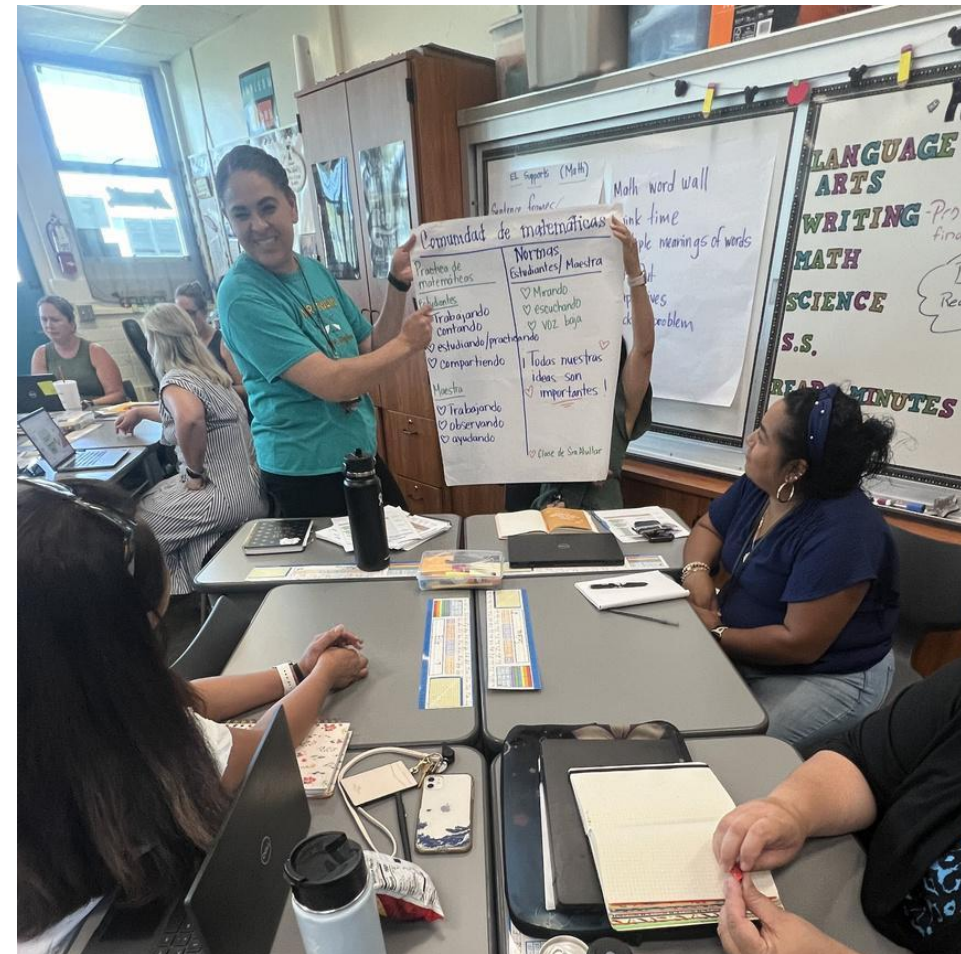
- Student Centered, Data Informed
- Academically & Behaviorally
- Interventions
- Data Walls

## Multi-Tiered System of Support (MTSS)

- Refining our practices
  - Will aide in Platinum PBIS Recognition
  - Closing the achievement gaps

## Professional Learning Community (PLC)

- Essential Standards
- Common Formative Assessments





# Special Student Presentation

**Sra. Cruz and Ms. Dempkey's 4th/5th combo DI class  
recreating their class's Hispanic Heritage living wax museum**

- Cristian A. as *Carlos Santana*
- Kedem T. as *Picasso*
- Oliver C. as *Edward James Olmos*
- Valentina M. as *Shakira*
- Lucy B. as *Sonia Sotomayor*
- Carmen M. L. as *Jennifer Lopez*
- Dominic Thorp as *Ellen Ochoa*





# Thank You

Any questions?

[twain.lawndalesd.net](http://twain.lawndalesd.net)