

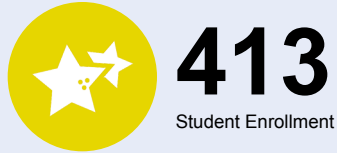


OREGON AT-A-GLANCE SCHOOL PROFILE Tualatin Elementary School

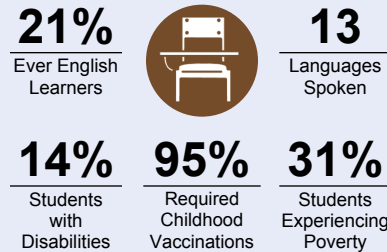
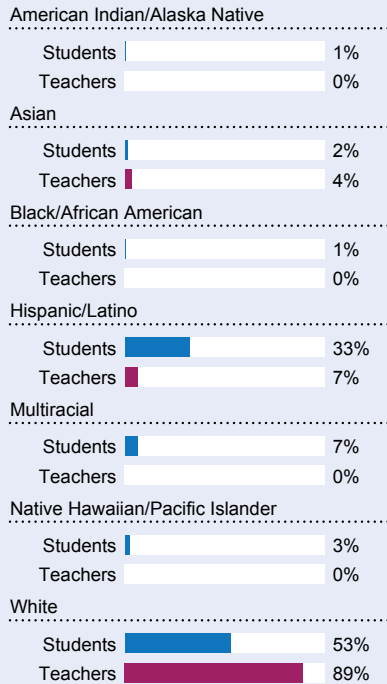
PRINCIPAL: Bobbie Brown | GRADES: K-5 | 20405 SW 95th Ave, Tualatin 97062 | 503-431-4800

School Environment

Students We Serve

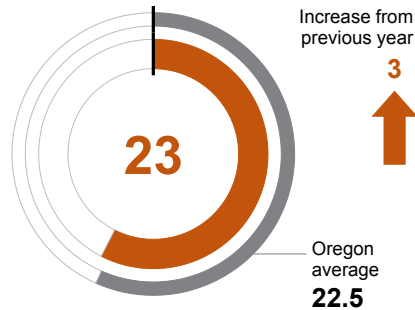


DEMOGRAPHICS

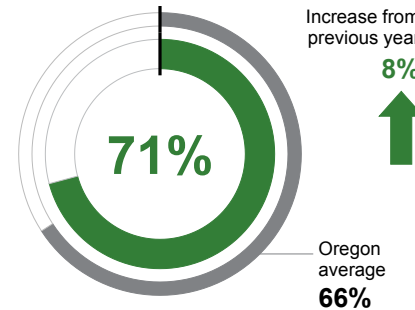


\*<10 students or data unavailable

CLASS SIZE Median class size.



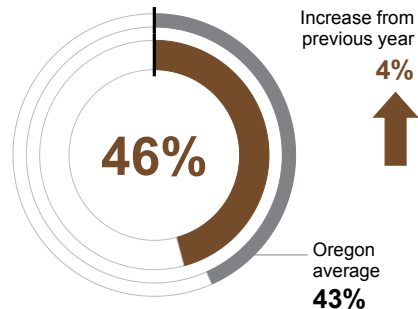
REGULAR ATTENDERS Students who attended more than 90% of their enrolled school days.



Academic Success

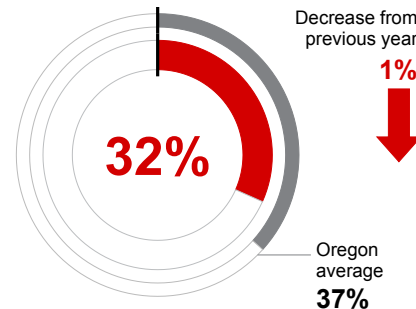
ENGLISH LANGUAGE ARTS

Students meeting state grade-level expectations.



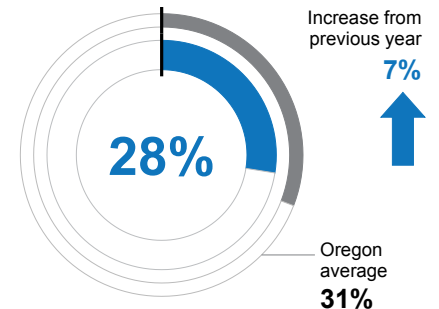
MATHEMATICS

Students meeting state grade-level expectations.



SCIENCE

Students meeting state grade-level expectations.



School Goals

Tualatin is dedicated to the delivery of inclusive, culturally specific instruction and our belief in the success of every student.

State Goals

The Oregon Department of Education is collaborating with school districts and communities across the state to achieve a 90% on-time graduation rate by 2027.

Safe & Welcoming Environment

TTSD continuously evaluates and responds to the needs of our ever-changing world and specifically our student population.



# OREGON AT-A-GLANCE SCHOOL PROFILE CONTINUED

## Tualatin Elementary School



2023-24

### Outcomes

#### Our Staff (rounded FTE)



**25**

Teachers



**11**

Educational assistants



**0**

Counselors/  
Psychologists/  
Social Workers



**86%**

Average teacher retention rate over the past three years



**81%**

% of licensed teachers with more than 3 years of experience



**No**

Same principal in the last 3 years

#### REGULAR ATTENDERS

American Indian/Alaska Native	<10 students or data unavailable
Asian	<10 students or data unavailable
Black/African American	<10 students or data unavailable
Hispanic/Latino	59%
Multiracial	69%
Native Hawaiian/Pacific Islander	27%
White	81%
Students Experiencing Poverty	47%
Ever English Learner	61%
Students with Disabilities	74%
Migrant	<10 students or data unavailable
Homeless	50%
Students in Foster Care	<10 students or data unavailable
Military Connected	<10 students or data unavailable
Talented and Gifted	80%
Female	72%
Male	69%
Non-Binary	<10 students or data unavailable

#### ENGLISH LANGUAGE ARTS

<10 students or data unavailable
<10 students or data unavailable
<10 students or data unavailable
25%
50%
<10 students or data unavailable
57%
19%
20%
18%
<10 students or data unavailable
<10 students or data unavailable
<10 students or data unavailable
<10 students or data unavailable
<10 students or data unavailable
<10 students or data unavailable
>95%
56%
34%
<10 students or data unavailable

#### MATHEMATICS

<10 students or data unavailable
<10 students or data unavailable
<10 students or data unavailable
8%
33%
<10 students or data unavailable
49%
9%
7%
11%
<10 students or data unavailable
<10 students or data unavailable
<10 students or data unavailable
<10 students or data unavailable
<10 students or data unavailable
88%
37%
26%
<10 students or data unavailable

### About Our School

#### BULLYING, HARASSMENT, AND SAFETY POLICIES

We are committed to fostering a school environment that is free from hazing, harassment, intimidation, racism, bullying, cyberbullying, menacing, or any threat to personal safety or race/national origin discrimination. This commitment is mandated by Board policy and reinforced by our student handbook. TTSD students have the responsibility to respect the rights of others, seek help when they know about a wrongful act, and resolve disputes peacefully. We teach anti-bullying and anti-hate lessons and provide professional supports around social, emotional, and behavioral health.

#### EXTRACURRICULAR ACTIVITIES

- Reading/Art/Math/Social Science/ Science/ Technology/Physical Education programs sponsored by Tualatin Elementary Arts Foundation donations and grants
- Oregon Battle of the Books
- Family and Community Nights
- Art Literacy
- Sustainable Garden Club & Farm-to-Table learning opportunities
- Student Leadership program for 5th graders
- No Place for Hate program for 5th graders

#### PARENT ENGAGEMENT

TTSD creates collaborative, culturally responsive relationships with all families. Communication is delivered in a variety of ways to ensure parents are informed and engaged in their students' learning and school environment. We welcome parent volunteers in our classrooms and school. Dedicated staff work with our families to serve the needs of each of our students. All major decisions that impact our students are made in partnership with our students and families.

#### COMMUNITY ENGAGEMENT

The TTSD community has a long and proven history of support for education and their schools. We work every day to steward that support by preparing our students for success in school and life. Our district strives to provide world-class experiences exposing our students to innovative learning in state-of-the-art buildings delivered by best-in-class teachers. We recognize that we can only do this work in partnership with our community. We are grateful for the life-changing assistance we receive from our volunteers, businesses, civic groups, faith communities, and countless others.