



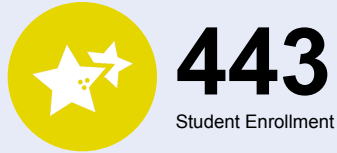
OREGON AT-A-GLANCE SCHOOL PROFILE

Milwaukie El Puente Elementary School

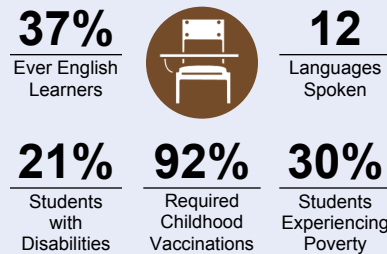
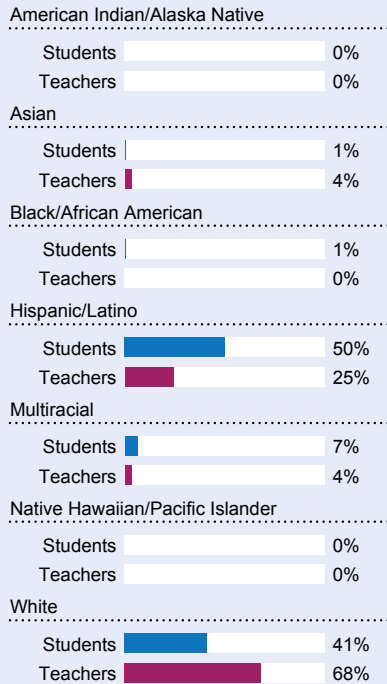
PRINCIPAL: Chelsea Aillon | GRADES: K-5 | 11250 SE 27th Ave, Milwaukie 97222 | 503-353-5480

School Environment

Students We Serve



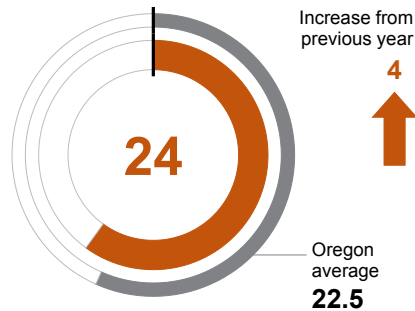
DEMOGRAPHICS



*<10 students or data unavailable

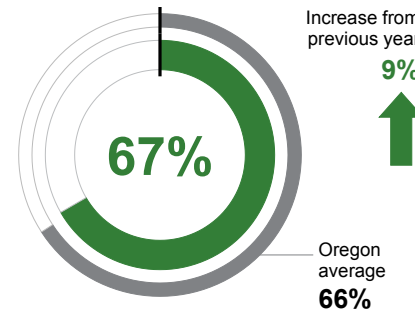
CLASS SIZE

Median class size.



REGULAR ATTENDERS

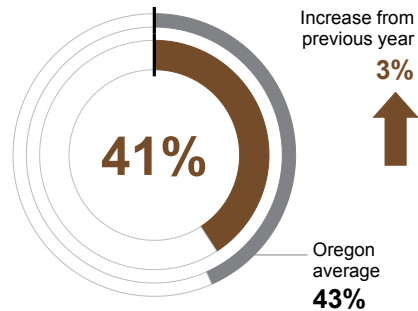
Students who attended more than 90% of their enrolled school days.



Academic Success

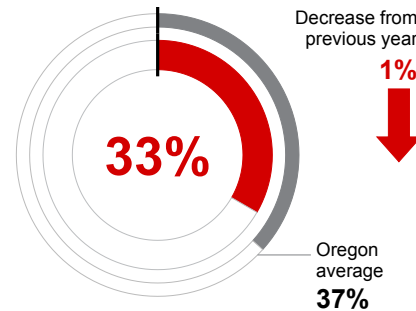
ENGLISH LANGUAGE ARTS

Students meeting state grade-level expectations.



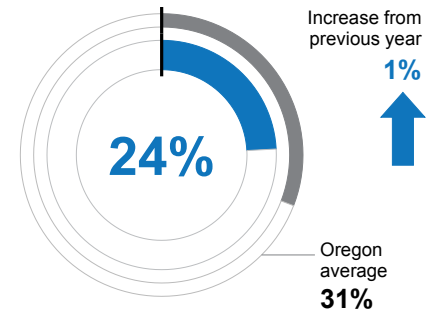
MATHEMATICS

Students meeting state grade-level expectations.



SCIENCE

Students meeting state grade-level expectations.



School Goals

As NSCD elementary school students enter one of our vibrant neighborhood, magnet, or charter schools, NCSD fosters a joy of learning, nurtures a positive vision for their future, and cultivates a school environment where all cultural heritages are valued. NCSD's elementary schools are striving to achieve this vision by focusing on the whole child and ensuring social, emotional, physical, and academic needs are met.

State Goals

The Oregon Department of Education is collaborating with school districts and communities across the state to achieve a 90% on-time graduation rate by 2027. Grounded in the pillars of Academic Excellence, Belonging and Wellness, and Reimagined Accountability, ODE prioritizes evidence-based practices to boost early literacy, attendance, and student engagement. We are committed to closing opportunity and achievement gaps for marginalized students and securing long-term success for all of Oregon's learners by investing in culturally responsive practices, fostering inclusive environments and always driving for continuous improvement.

Safe & Welcoming Environment

NCSD believes the physical, social, and emotional safety of all students is a priority no matter their demographics or identities. Therefore, NCSD has an obligation to each student, family, staff member, and community member to provide environments that hold a fundamental sense of safety and respect. NCSD values all people regardless of background, race, color, religion, sex, sexual orientation, gender identity, national or ethnic origin, marital status, age, disability, or familial status.



OREGON AT-A-GLANCE SCHOOL PROFILE CONTINUED

Milwaukie El Puente Elementary School



2023-24

Outcomes

Our Staff (rounded FTE)



23

Teachers



10

Educational assistants



1

Counselors/
Psychologists/
Social Workers



84%

Average teacher retention rate over the past three years



76%

% of licensed teachers with more than 3 years of experience



Yes

Same principal in the last 3 years

REGULAR ATTENDERS

American Indian/Alaska Native	<10 students or data unavailable
Asian	<10 students or data unavailable
Black/African American	<10 students or data unavailable
Hispanic/Latino	61%
Multiracial	68%
Native Hawaiian/Pacific Islander	<10 students or data unavailable
White	73%
Students Experiencing Poverty	51%
Ever English Learner	62%
Students with Disabilities	58%
Migrant	<10 students or data unavailable
Homeless	<10 students or data unavailable
Students in Foster Care	<10 students or data unavailable
Military Connected	<10 students or data unavailable
Talented and Gifted	79%
Female	62%
Male	71%
Non-Binary	<10 students or data unavailable

ENGLISH LANGUAGE ARTS

<10 students or data unavailable
<10 students or data unavailable
<10 students or data unavailable
22%
53%
<10 students or data unavailable
59%
17%
21%
23%
<10 students or data unavailable
<10 students or data unavailable
<10 students or data unavailable
<10 students or data unavailable
<10 students or data unavailable
94%
41%
41%
<10 students or data unavailable

MATHEMATICS

<10 students or data unavailable
<10 students or data unavailable
<10 students or data unavailable
17%
47%
<10 students or data unavailable
49%
22%
24%
15%
<10 students or data unavailable
<10 students or data unavailable
<10 students or data unavailable
<10 students or data unavailable
<10 students or data unavailable
88%
28%
37%
<10 students or data unavailable

About Our School

BULLYING, HARASSMENT, AND SAFETY POLICIES

NCSD believes that in order for all students, families, and staff members to feel important and welcome as members of the school community, they must feel safe - physically, emotionally, and psychologically. For this reason, NCSD has a comprehensive set of policies that prohibit bullying and harassment, and NCSD has established multiple reporting and accountability measures designed to assist NCSD to respond quickly to these incidents. Information about NCSD's policies can be found at bit.ly/2CrTbnk.

EXTRACURRICULAR ACTIVITIES

North Clackamas School District offers a range of extracurricular activities for our elementary-aged students. Some examples may include: morning/after school CARE program, PTA/PTO-sponsored events, music and arts education, and partnerships with local, community-based organizations.

PARENT ENGAGEMENT

Engaged families contribute significantly to students' academic success. NCSD recognizes its responsibility to create and maintain strong partnerships with families. The district develops and implements multiple forums to connect families with their child's education, their schools, and the larger NCSD community. NCSD is committed to supporting all students by fostering meaningful family involvement. The district's schools prioritize building and nurturing these essential family-school relationships.

COMMUNITY ENGAGEMENT

North Clackamas Schools welcomes and values the contributions of its community partners. Local businesses, social service organizations, and numerous individual volunteers add to the richness of the NCSD experience, both inside and outside of classrooms. Volunteers are welcome at our schools, and are a valued source of knowledge and expertise benefiting students and staff.