



NOVEMBER 20, 2024

HIGH SCHOOL NO. 2

DESIGN UPDATE



WHO WE ARE



Tom Oehler
Principal-In-Charge



Rory Estes
Principal



Sara Koprowski
Sr. Associate, Educational Planner



Richard Hunt
Senior Associate, Lead Designer



PROGRAMMING



PROGRAMMING - HIGH SCHOOL #2

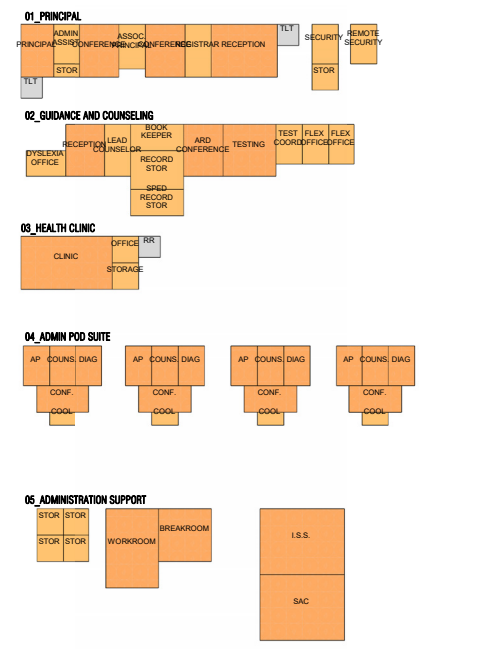
PROGRAM PURPOSE

This program is a document that **sets the outline** for the design, by prioritizing the goals of the Lake Travis administration and staff for the new High School No. 2.

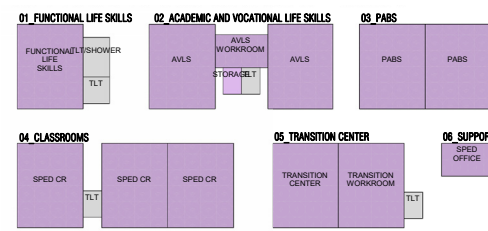
The intent for the program created for High School No. 2 is to assign space needs that align with a **1,500 capacity** comprehensive high school.

The project team will then carry this program throughout design to ensure these needs are met.

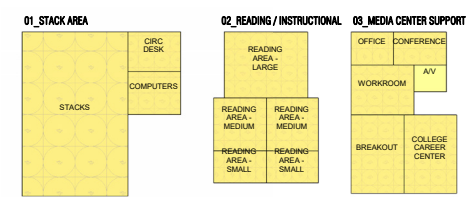
ADMINISTRATION



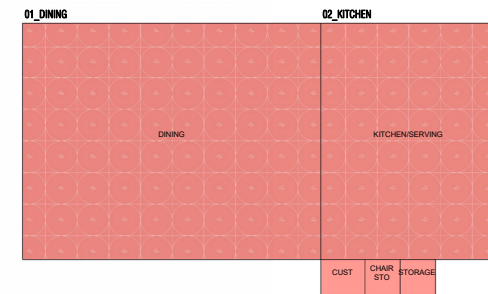
SPED



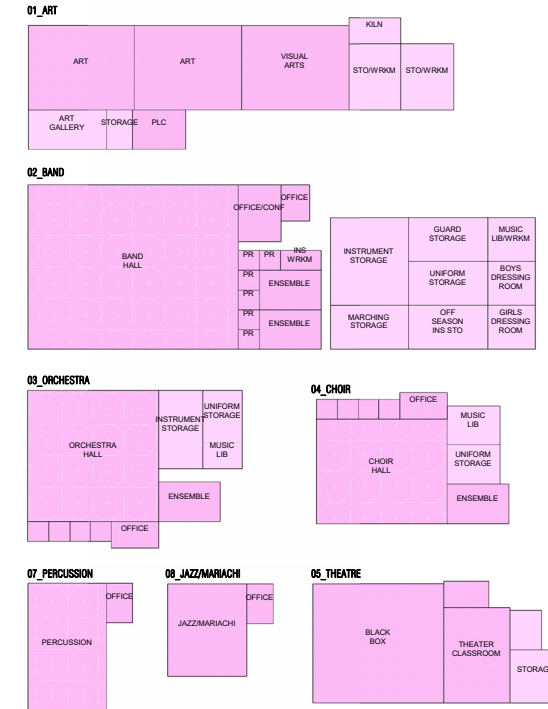
MEDIA



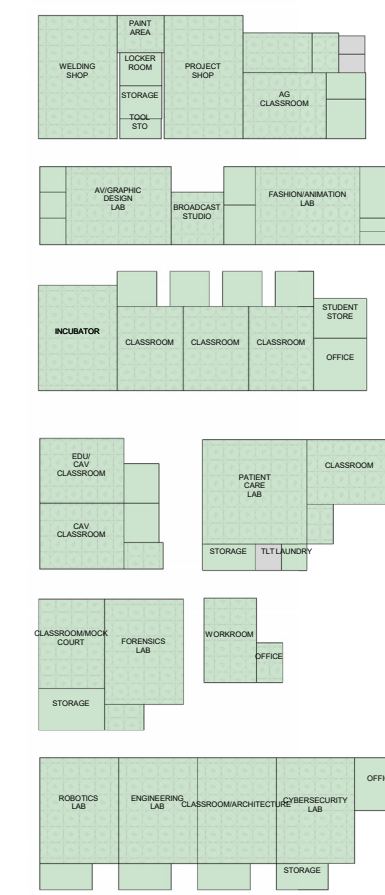
DINING



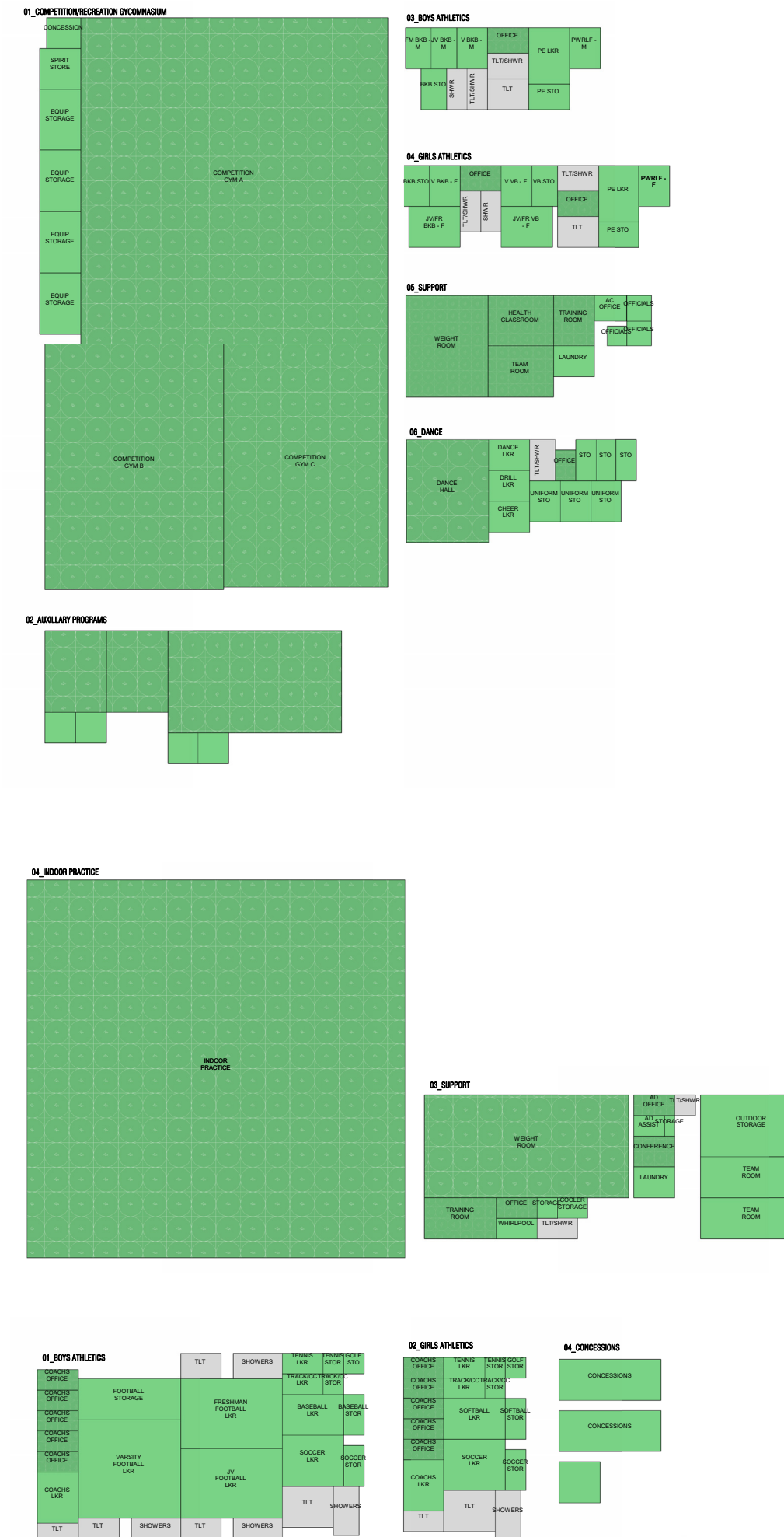
FINE ARTS



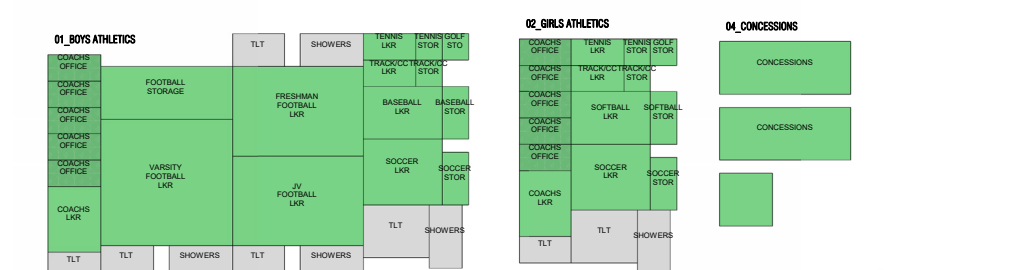
CAREER AND TECHNOLOGY



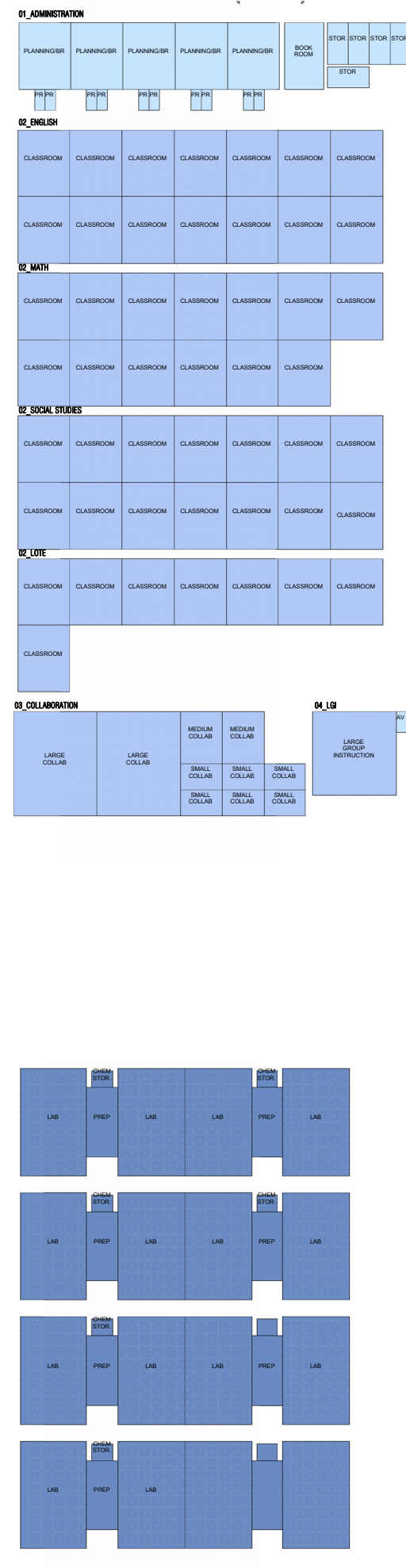
INDOOR ATHLETICS



OUTDOOR



ACADEMICS



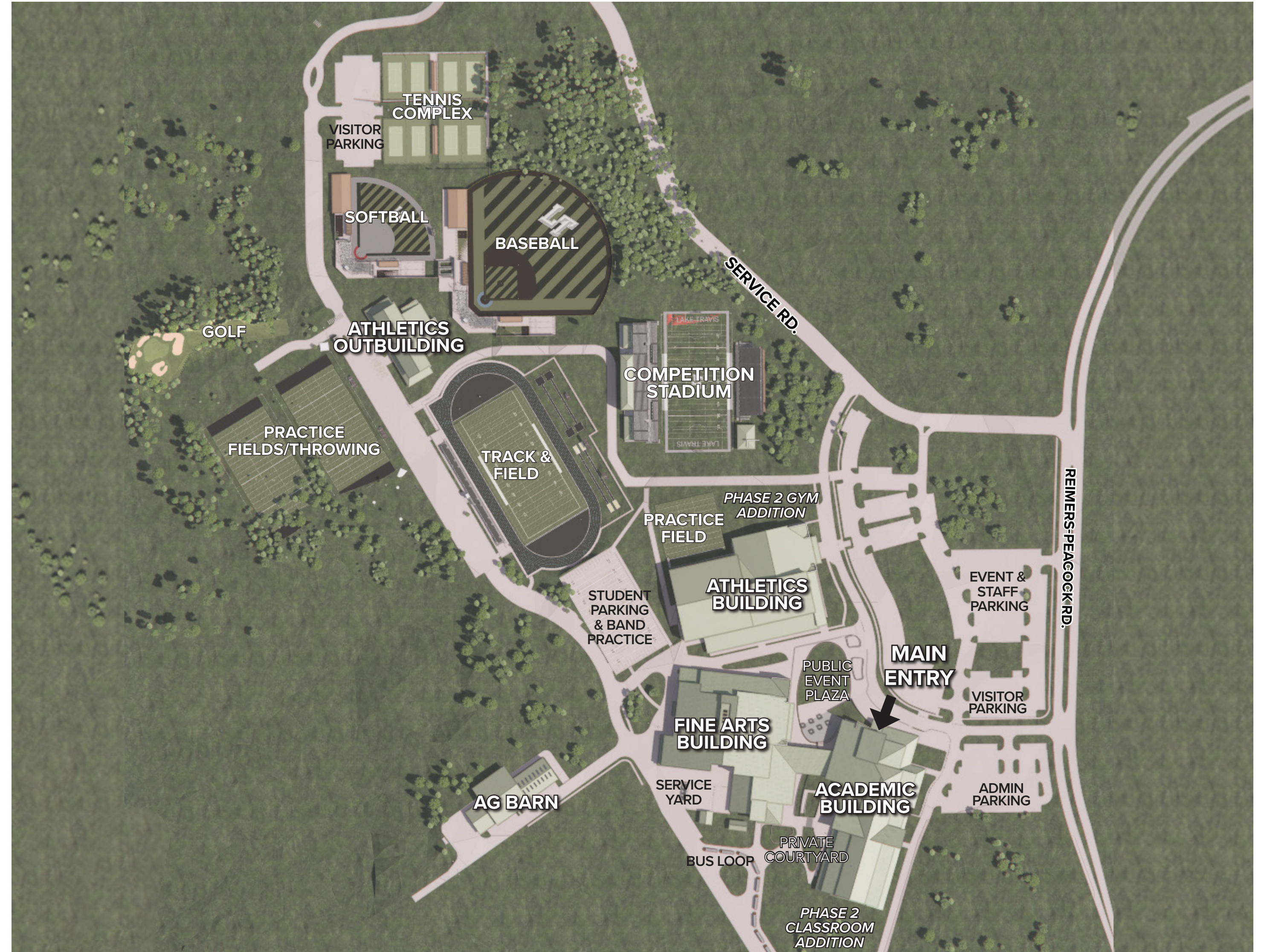
DESIGN UPDATE



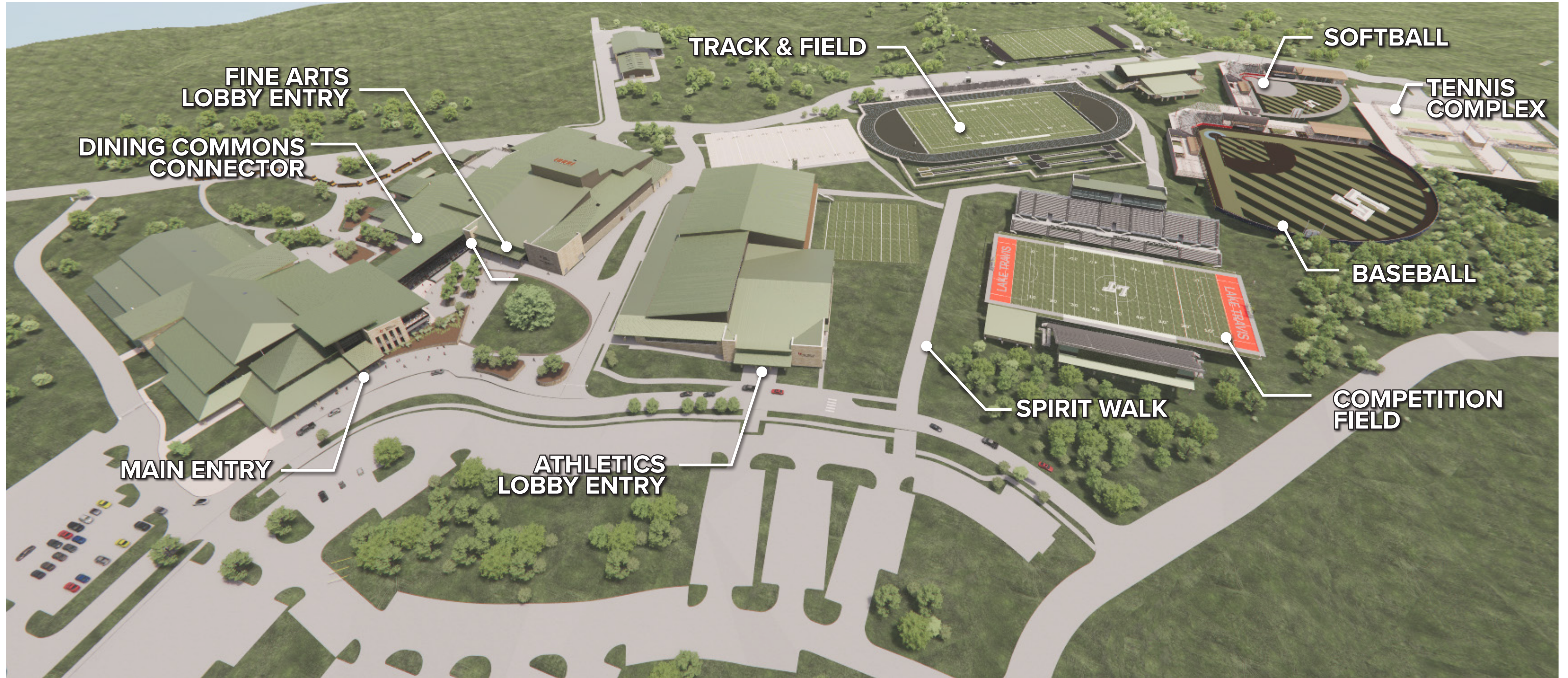
SITE PLAN

KEY HIGHLIGHTS

- 150 acre site
- 1,171 parking spaces
- 1,500 student capacity
- 1,720 - seat Competition Gym
- 700 - seat Auditorium
- Planned Phase 2 Expansions
- Practice Fields
- Competition Fields
 - 8,000 seat stadium
 - Track & Field / Soccer stadium
 - Baseball / Softball
 - Tennis



SITE

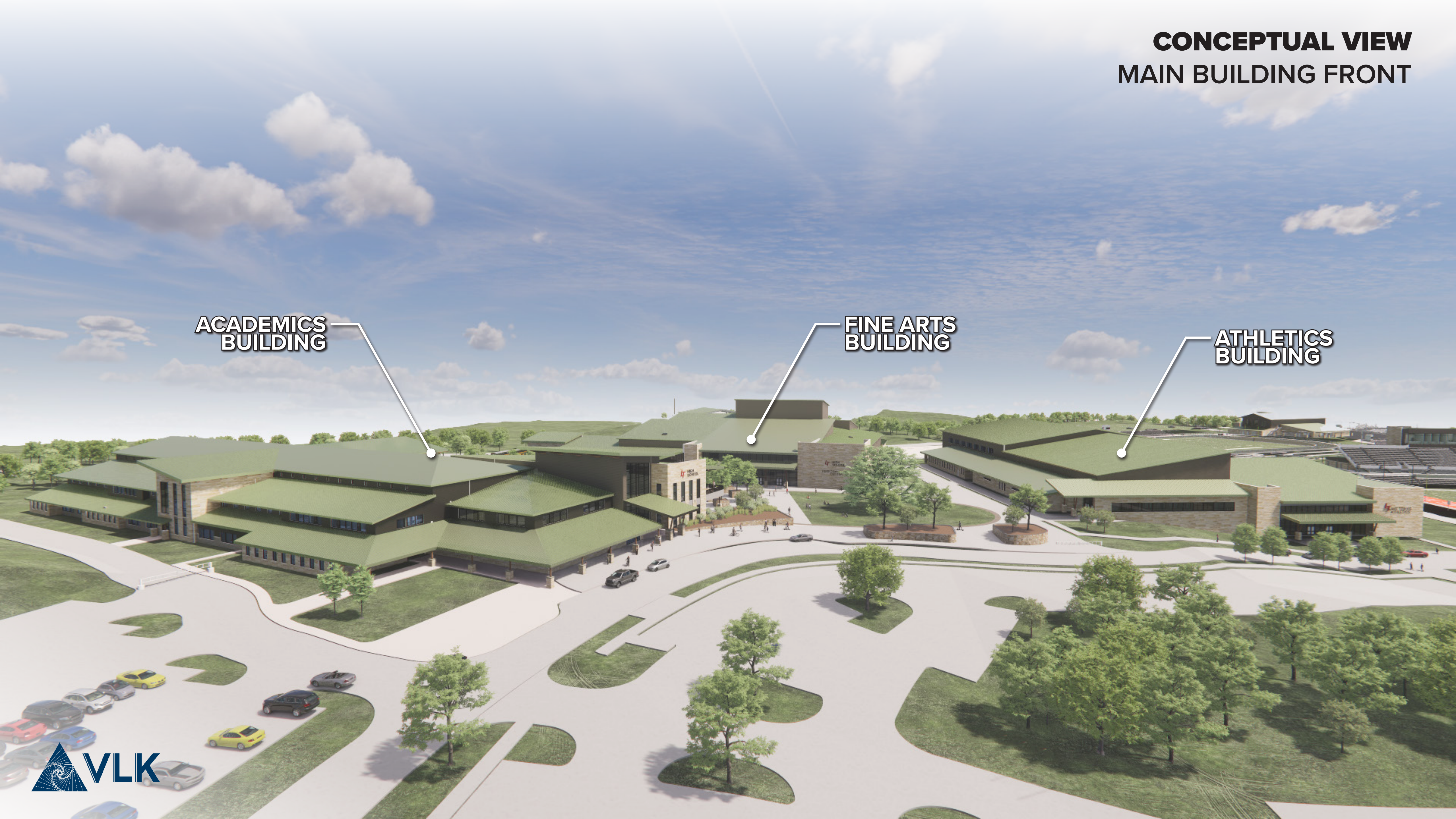


**CONCEPTUAL VIEW
MAIN BUILDING FRONT**

**ACADEMICS
BUILDING**

**FINE ARTS
BUILDING**

**ATHLETICS
BUILDING**



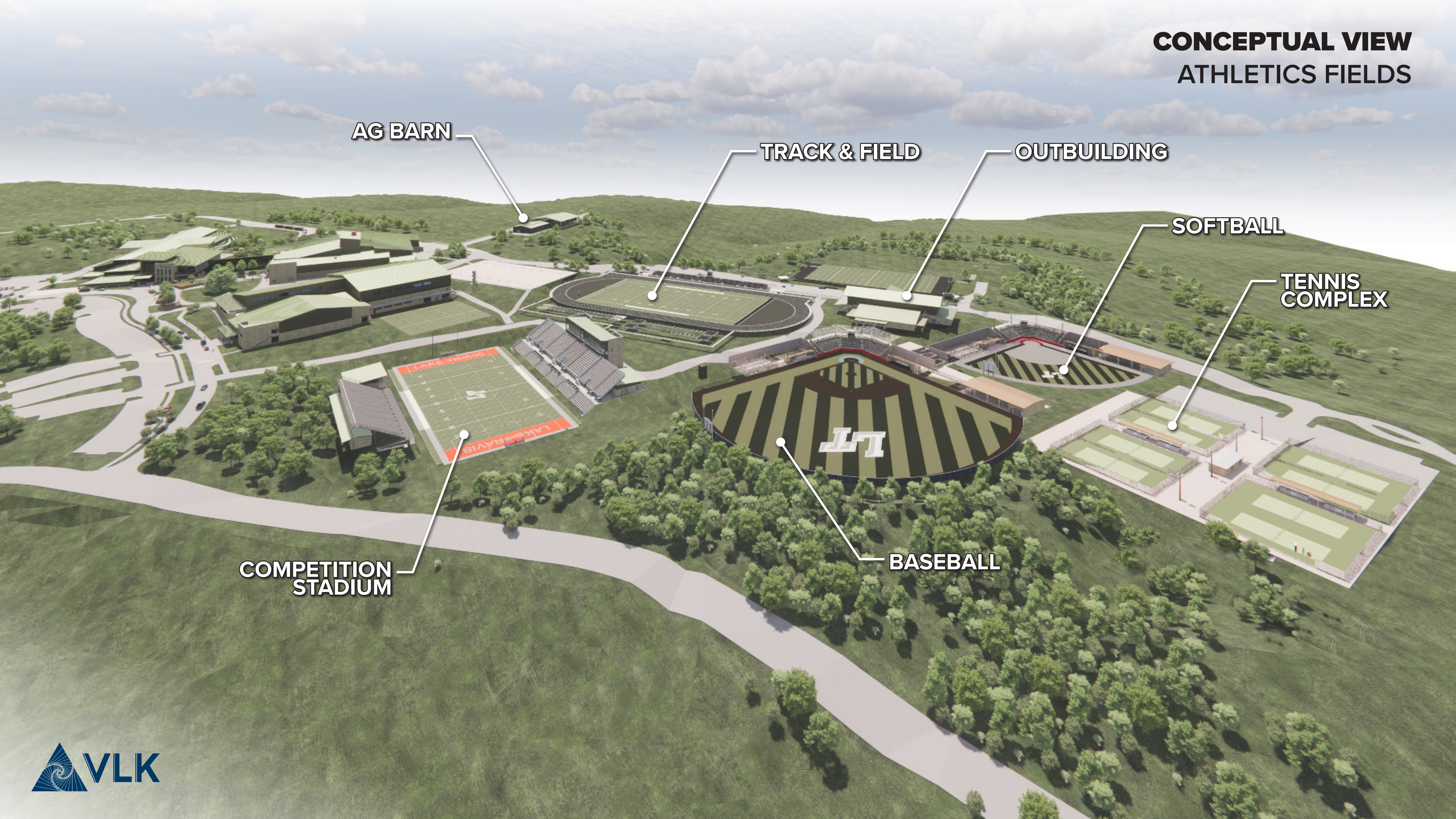
**CONCEPTUAL VIEW
MAIN BUILDING BACK**

**FINE ARTS
BUILDING**

**ATHLETICS
BUILDING**

**ACADEMICS
BUILDING**

CONCEPTUAL VIEW ATHLETICS FIELDS



AG BARN

TRACK & FIELD

OUTBUILDING

SOFTBALL

TENNIS
COMPLEX

COMPETITION
STADIUM

BASEBALL

**CONCEPTUAL VIEW
PRACTICE FIELD**

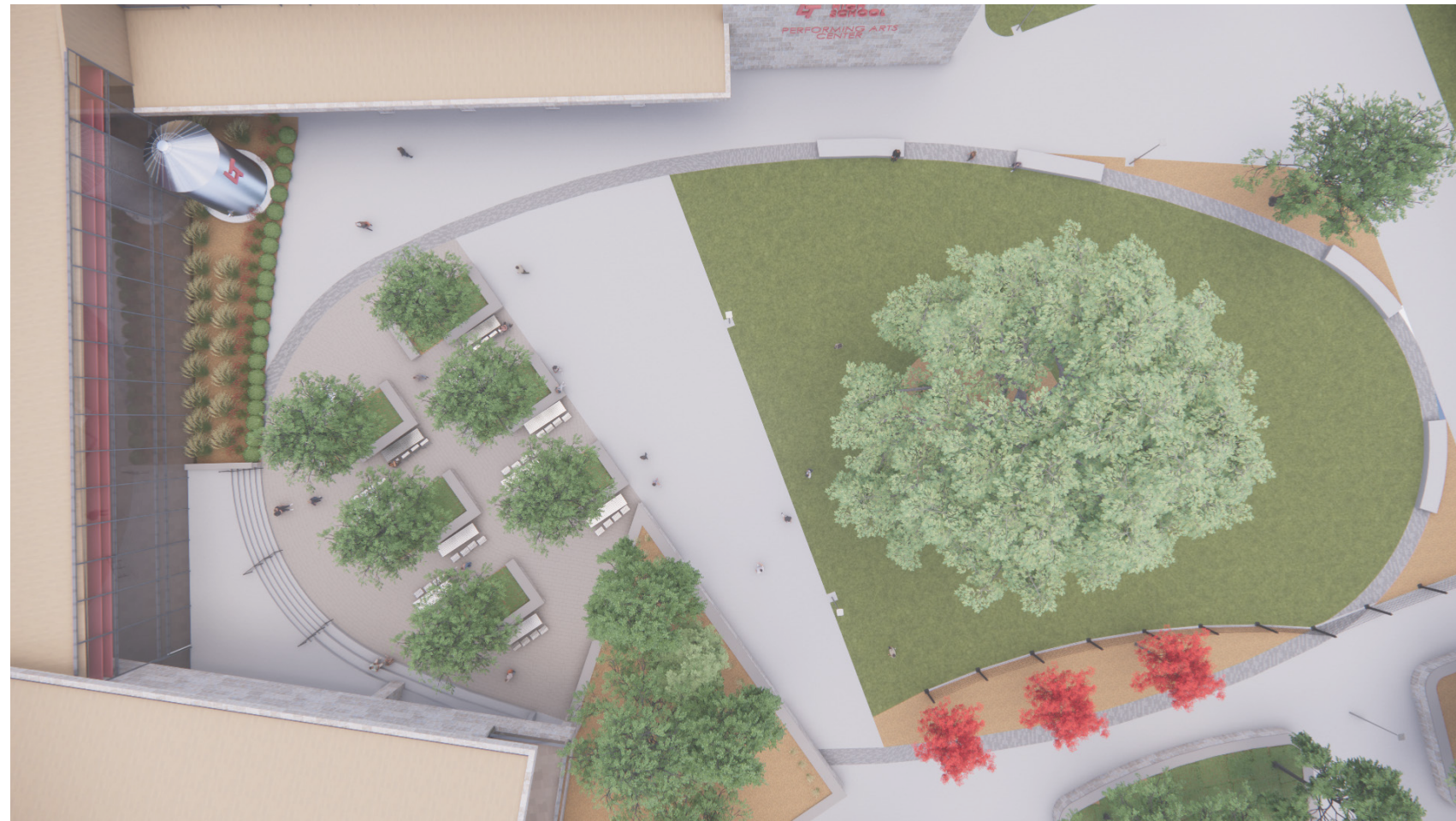
**ATHLETICS
BUILDING**

**FINE ARTS
BUILDING**

**STUDENT
PARKING & BAND
PRACTICE**

**PRACTICE
FIELD**

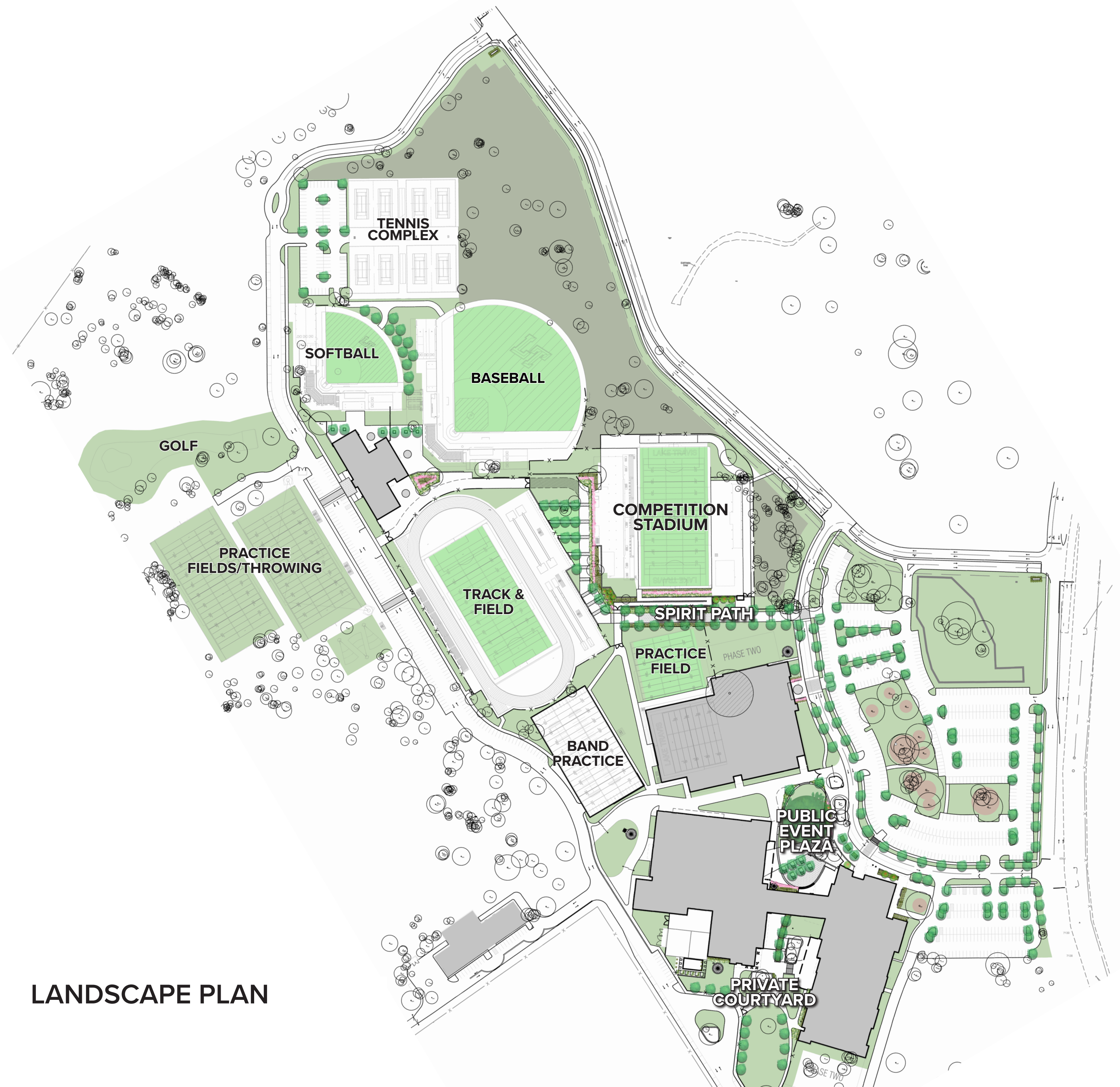
LANDSCAPE UPDATE



PUBLIC EVENT PLAZA



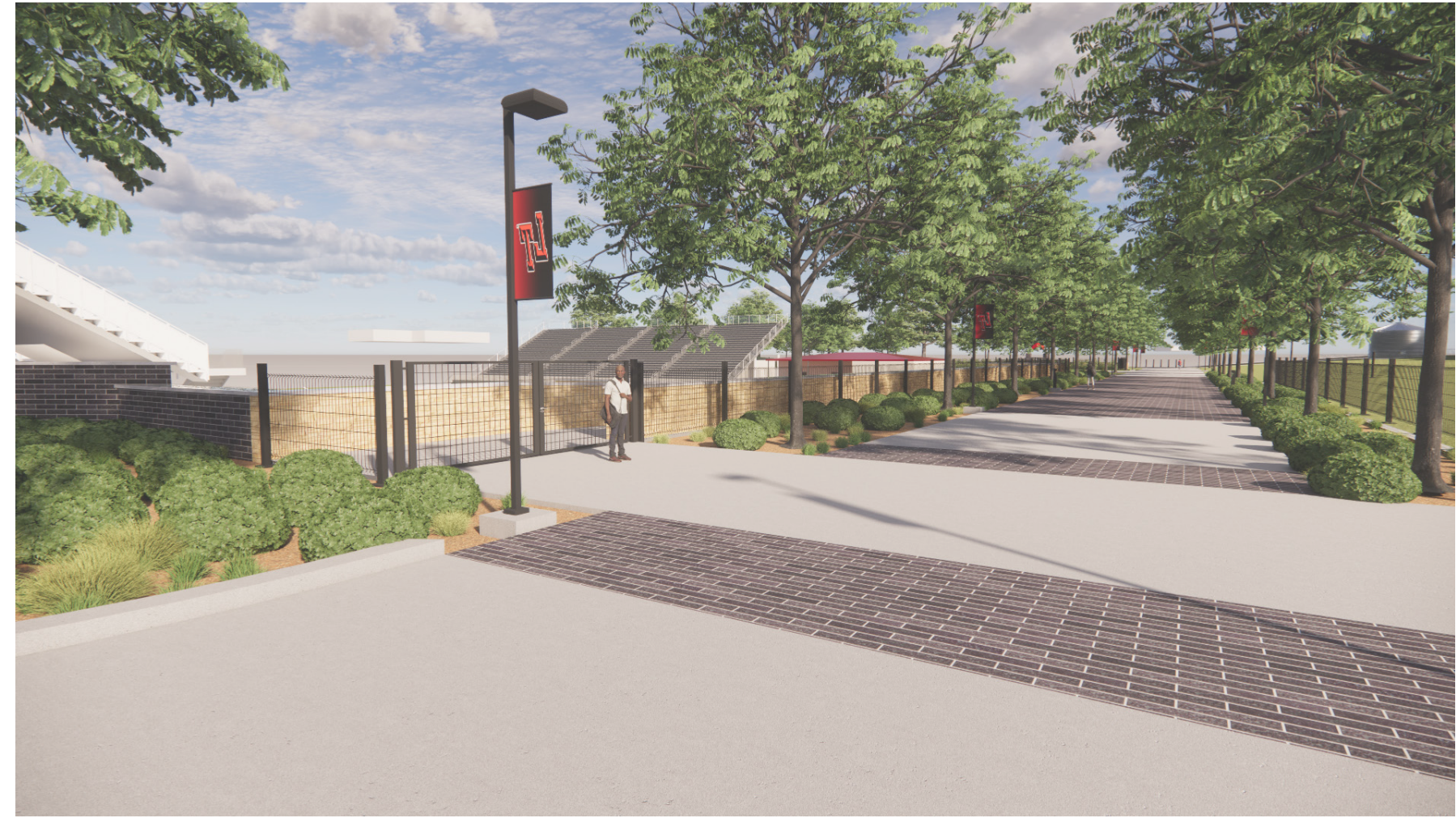
PRIVATE COURTYARD



LANDSCAPE PLAN

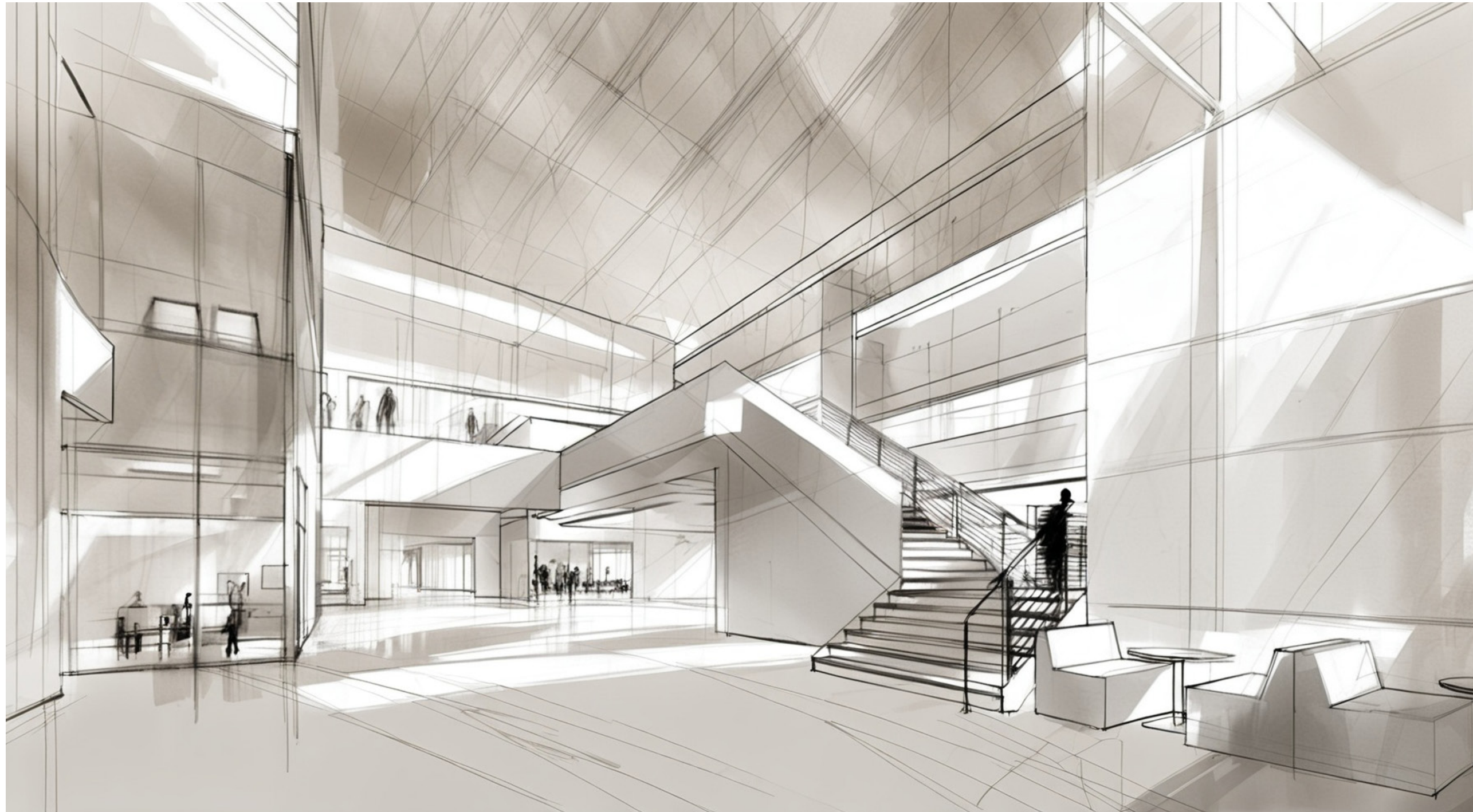


LANDSCAPE UPDATE

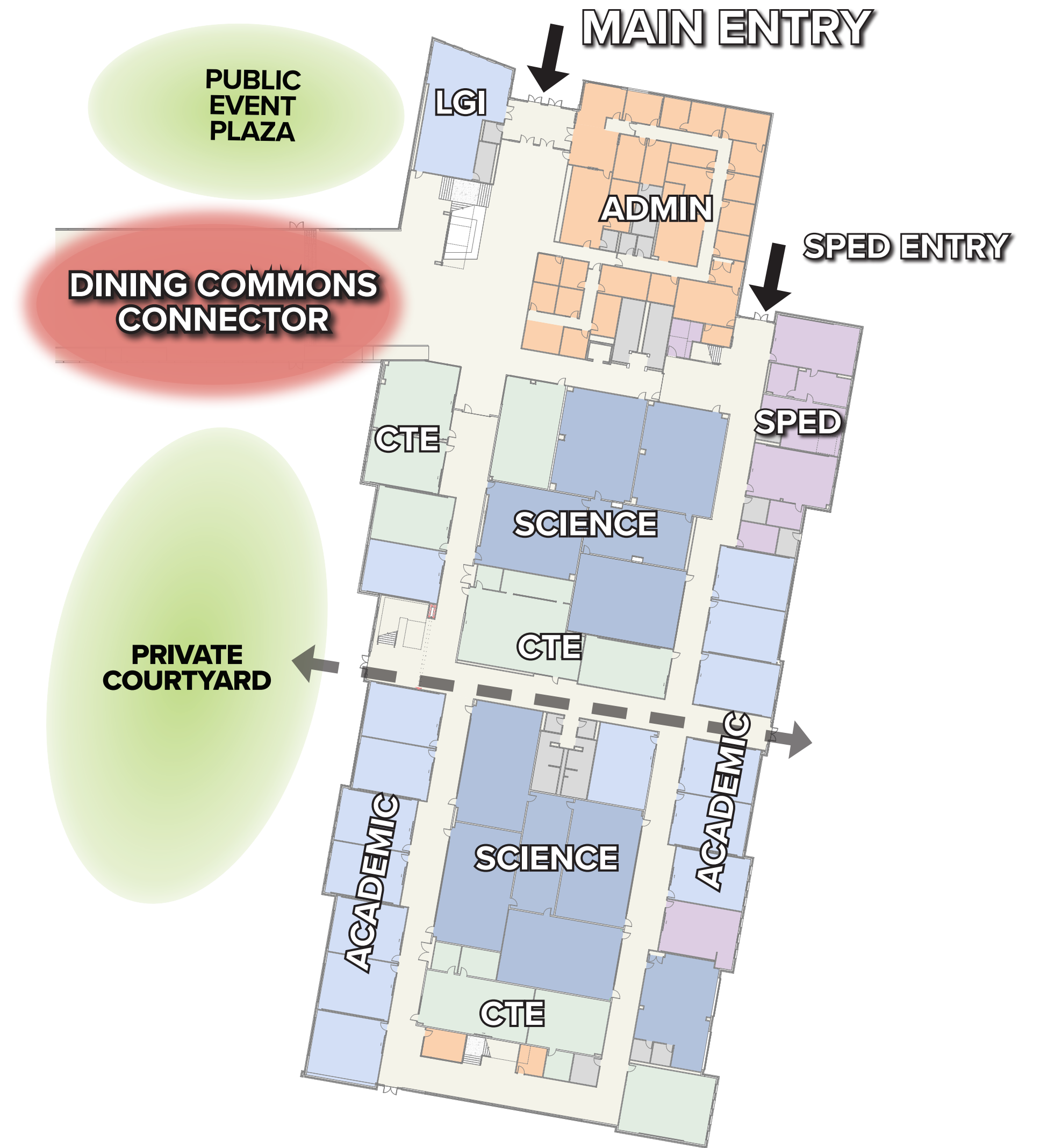


FLOOR PLAN

ACADEMIC BUILDING - LEVEL ONE



CONCEPTUAL VIEW FRONT ENTRY

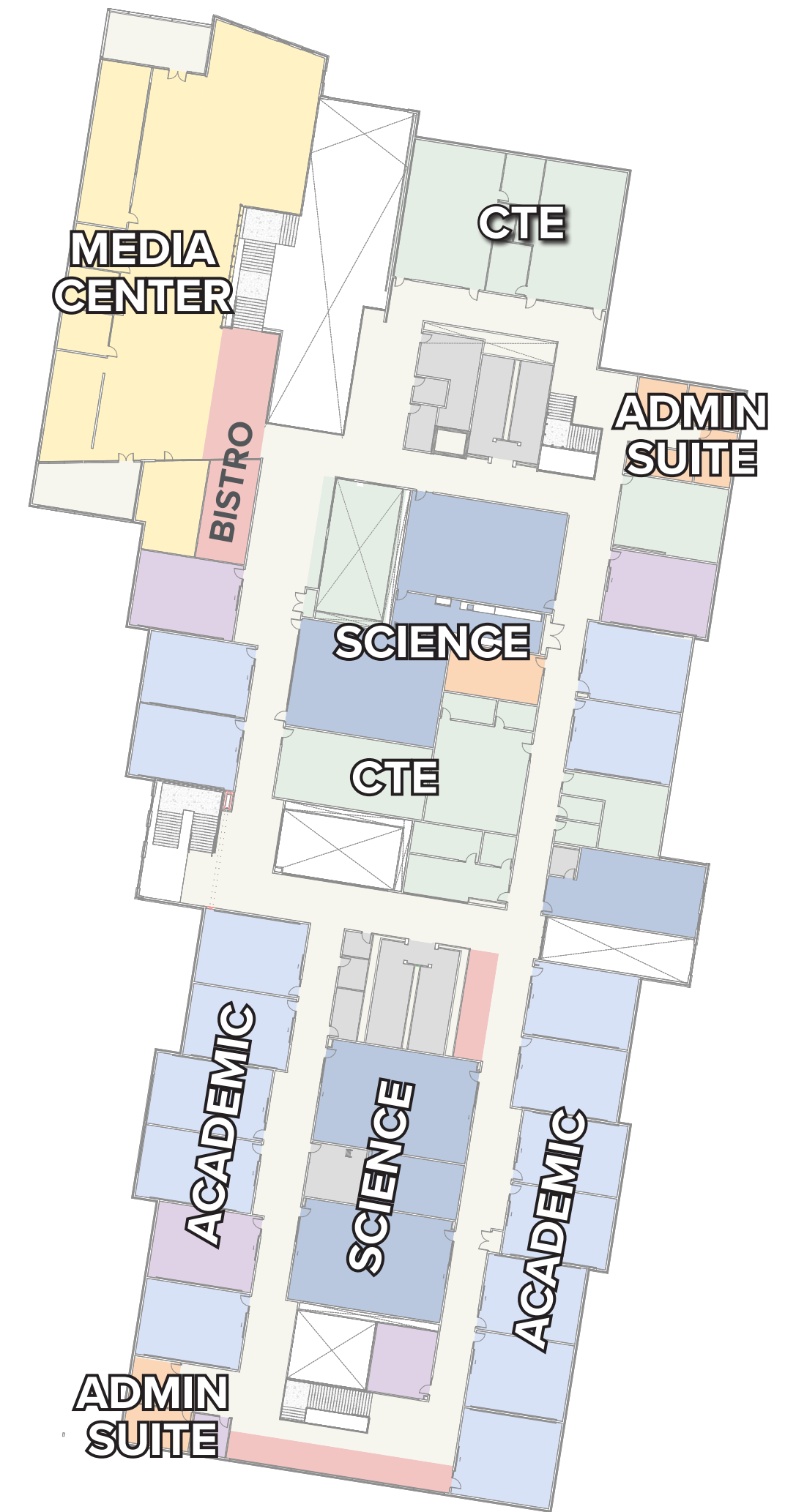


FLOOR PLAN

ACADEMIC BUILDING - LEVEL TWO



CONCEPTUAL VIEW MEDIA CENTER

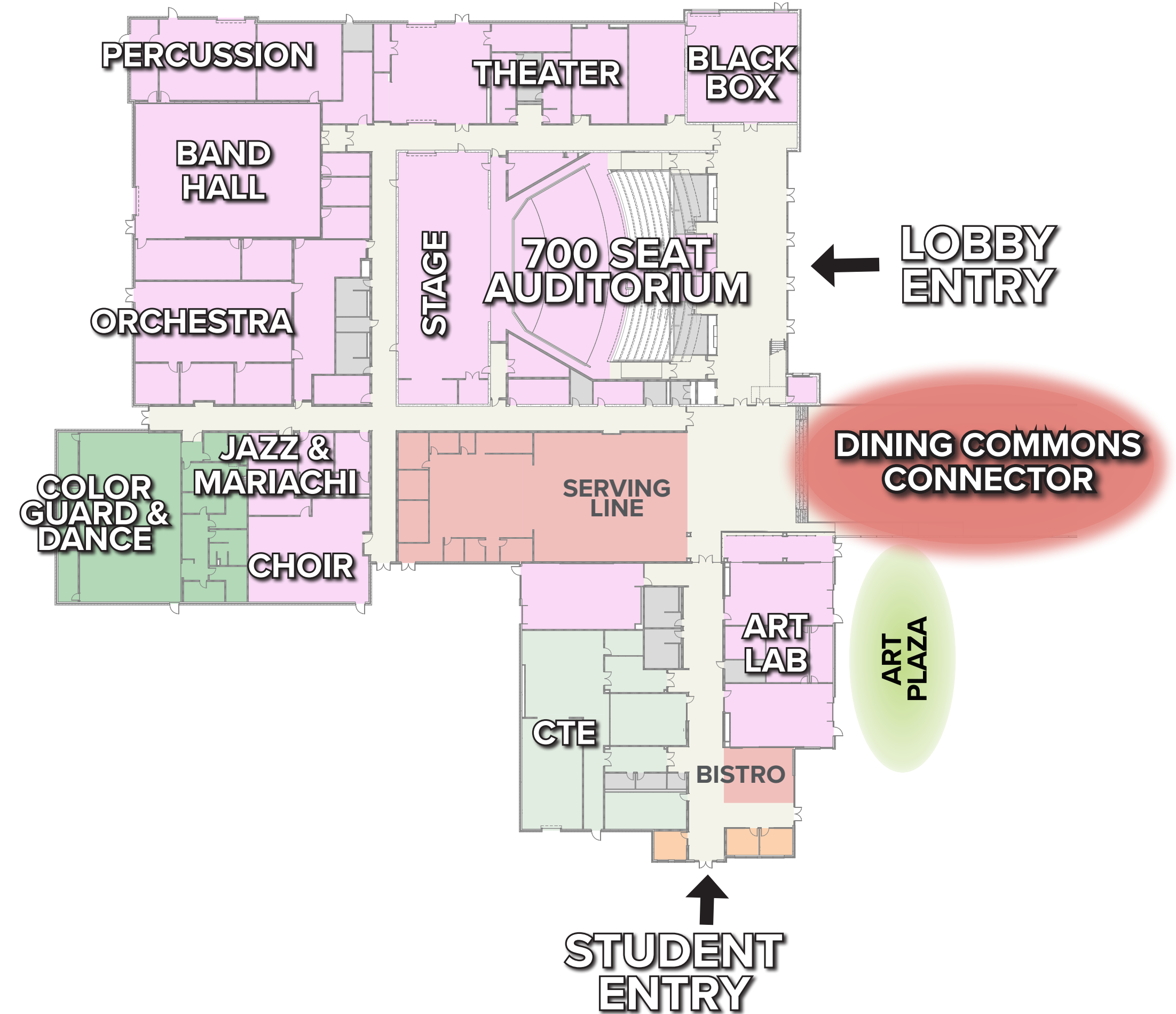


FLOOR PLAN

FINE ARTS BUILDING



CONCEPTUAL VIEW DINING COMMONS CONNECTOR

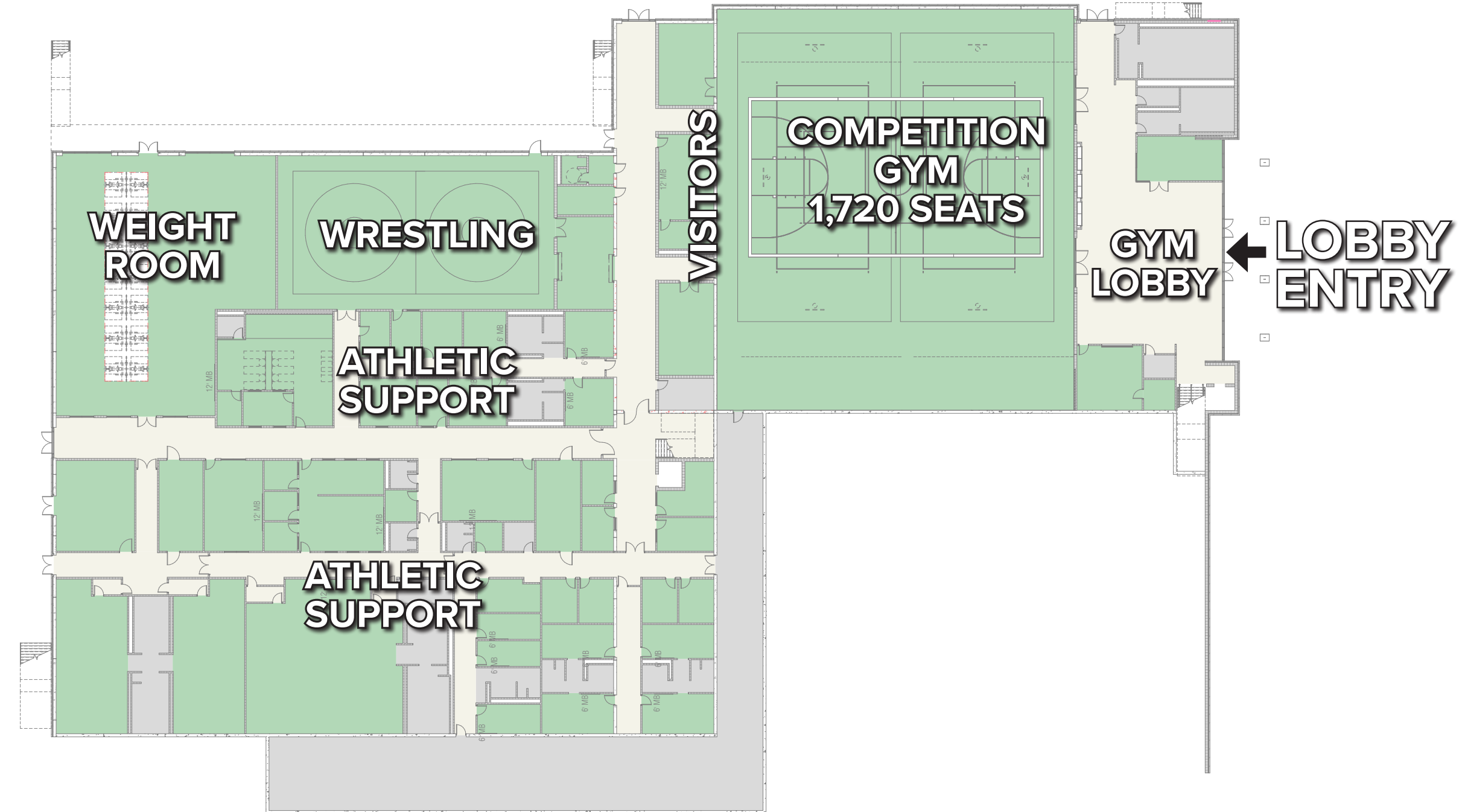


FLOOR PLAN

ATHLETICS BUILDING - LEVEL ONE

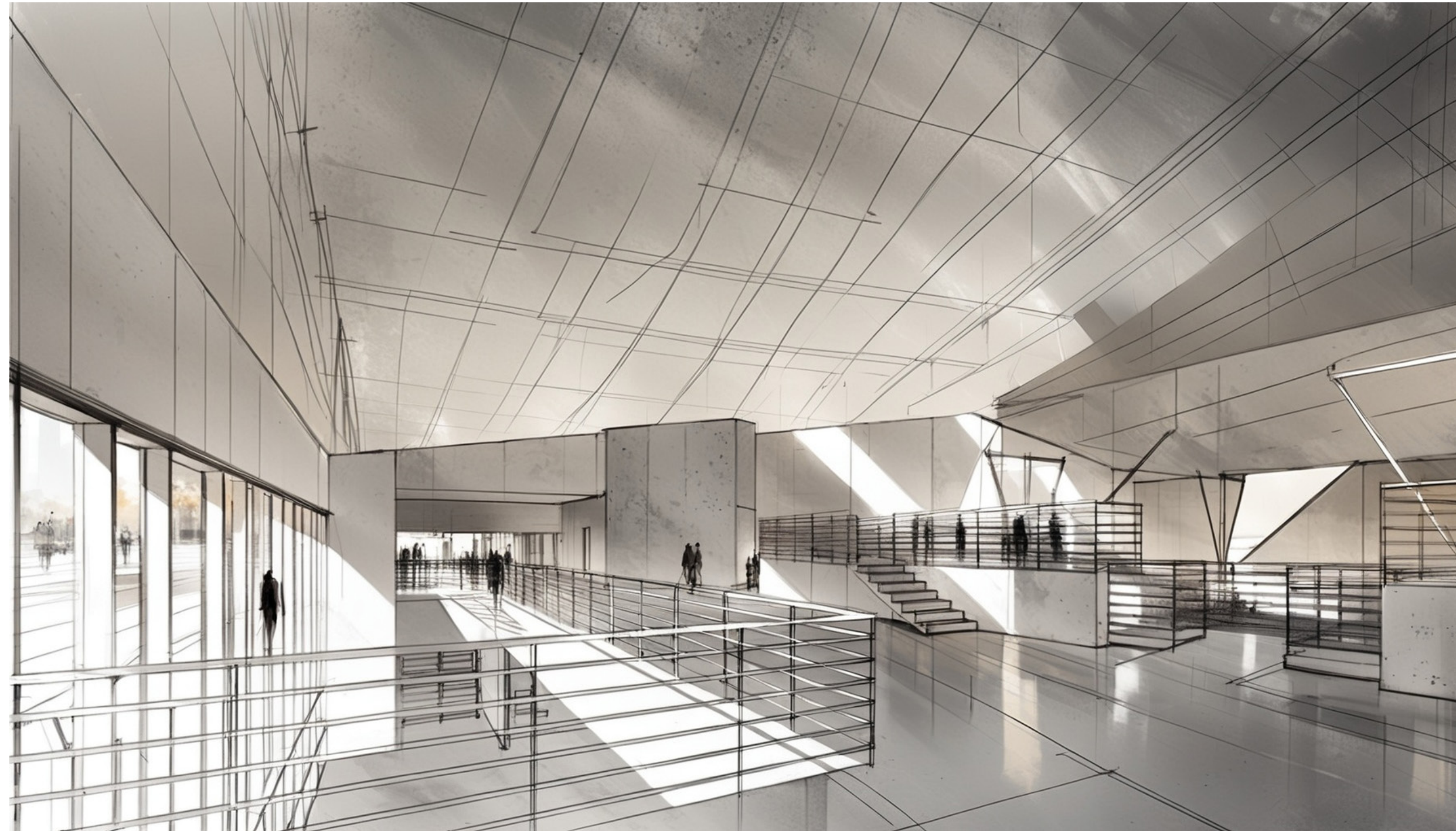


CONCEPTUAL VIEW OF GYM LOBBY

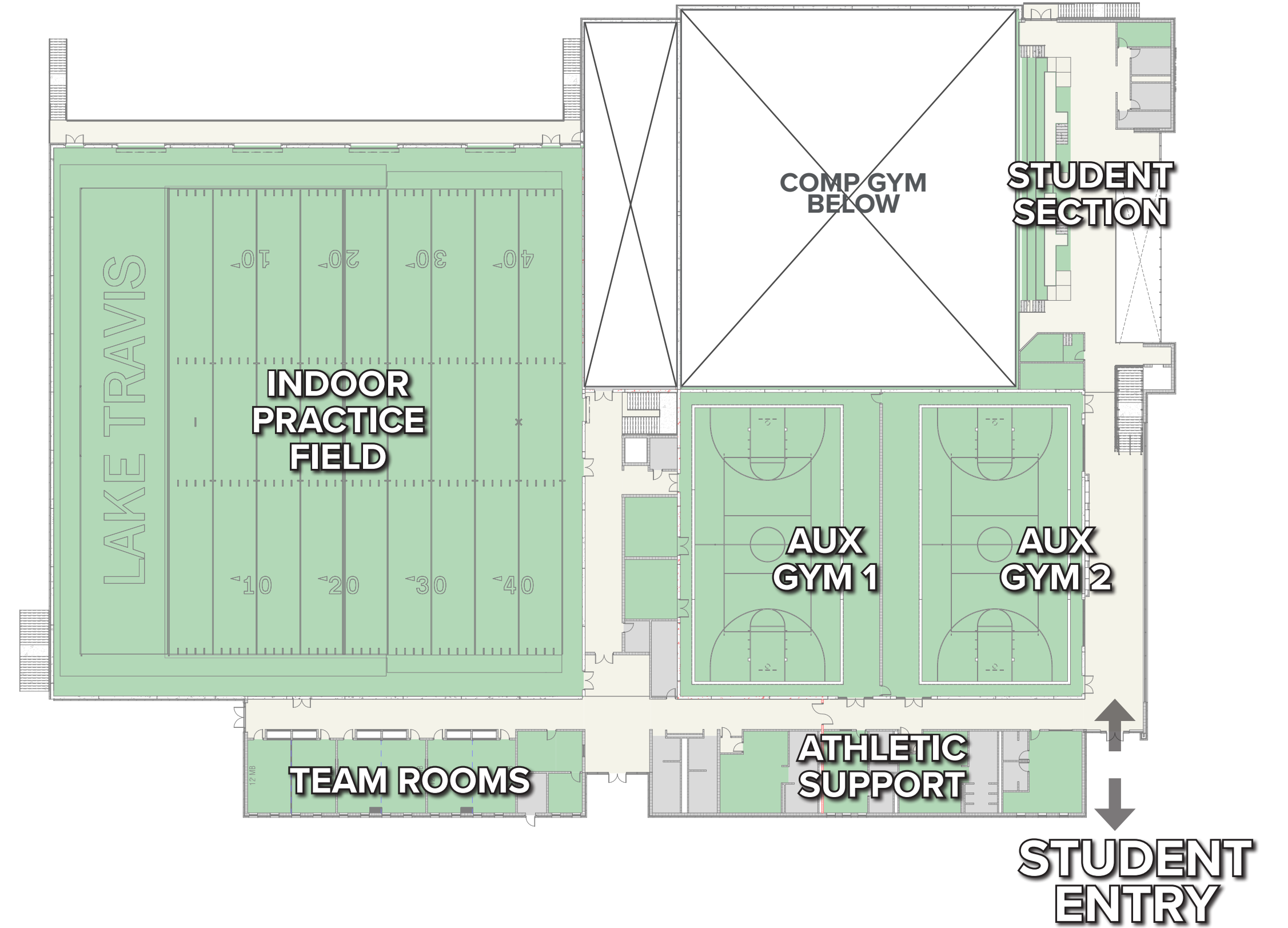


FLOOR PLAN

ATHLETICS BUILDING - LEVEL TWO

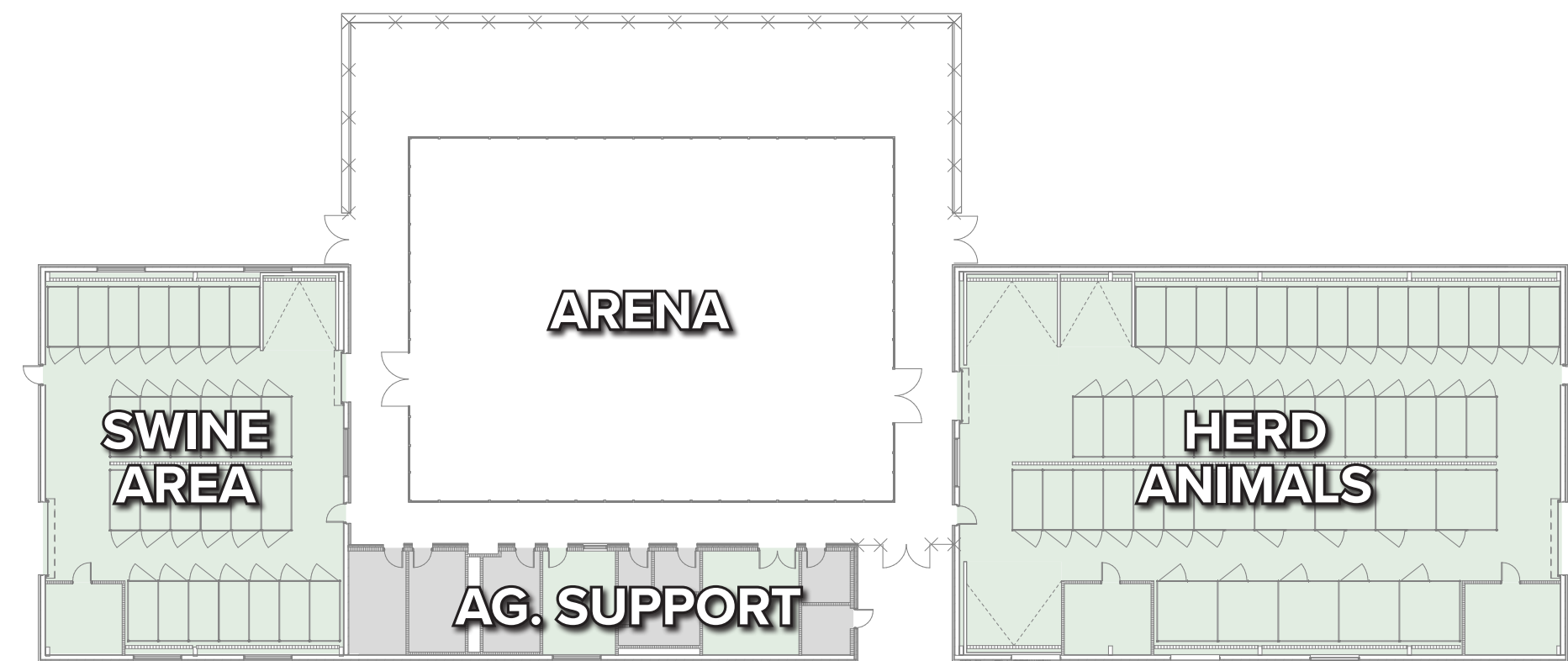


CONCEPTUAL VIEW OF STUDENT SECTION



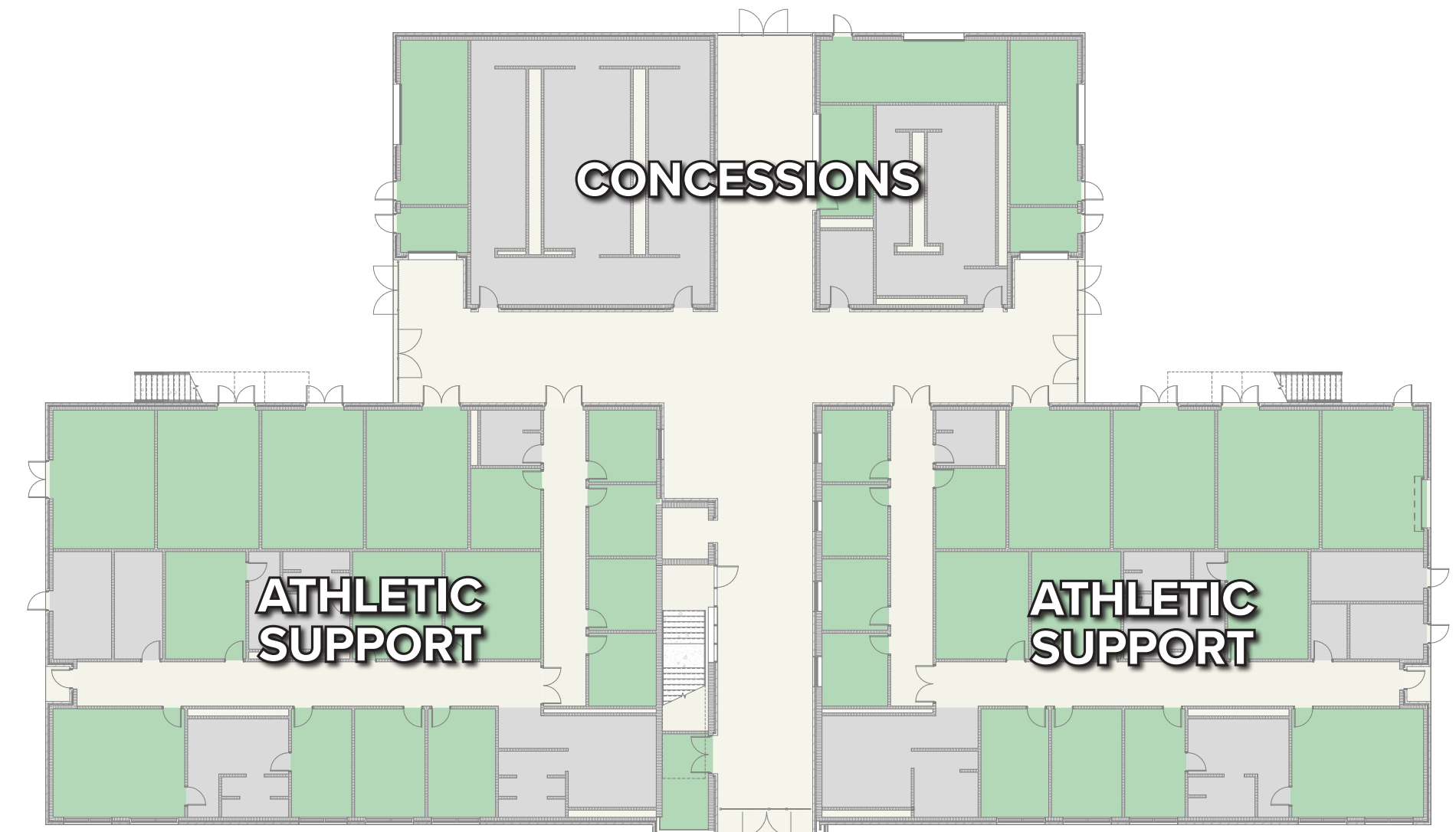
FLOOR PLAN

AG BARN AND OUTBUILDING



AG BARN

11,329 S.F.



OUTBUILDING - LEVEL ONE

23,071 S.F.



OUTBUILDING - LEVEL TWO

10,582 S.F.

TOTAL: 33,507 S.F.



**CONCEPTUAL VIEW
FRONT ENTRY**



MEDIA CENTER

**FINE ARTS
LOBBY ENTRY**

COVERED WALKWAY

MAIN ENTRY

CONCEPTUAL VIEW
PUBLIC EVENT PLAZA VIEW

MEDIA CENTER

**DINING COMMONS
CONNECTOR**

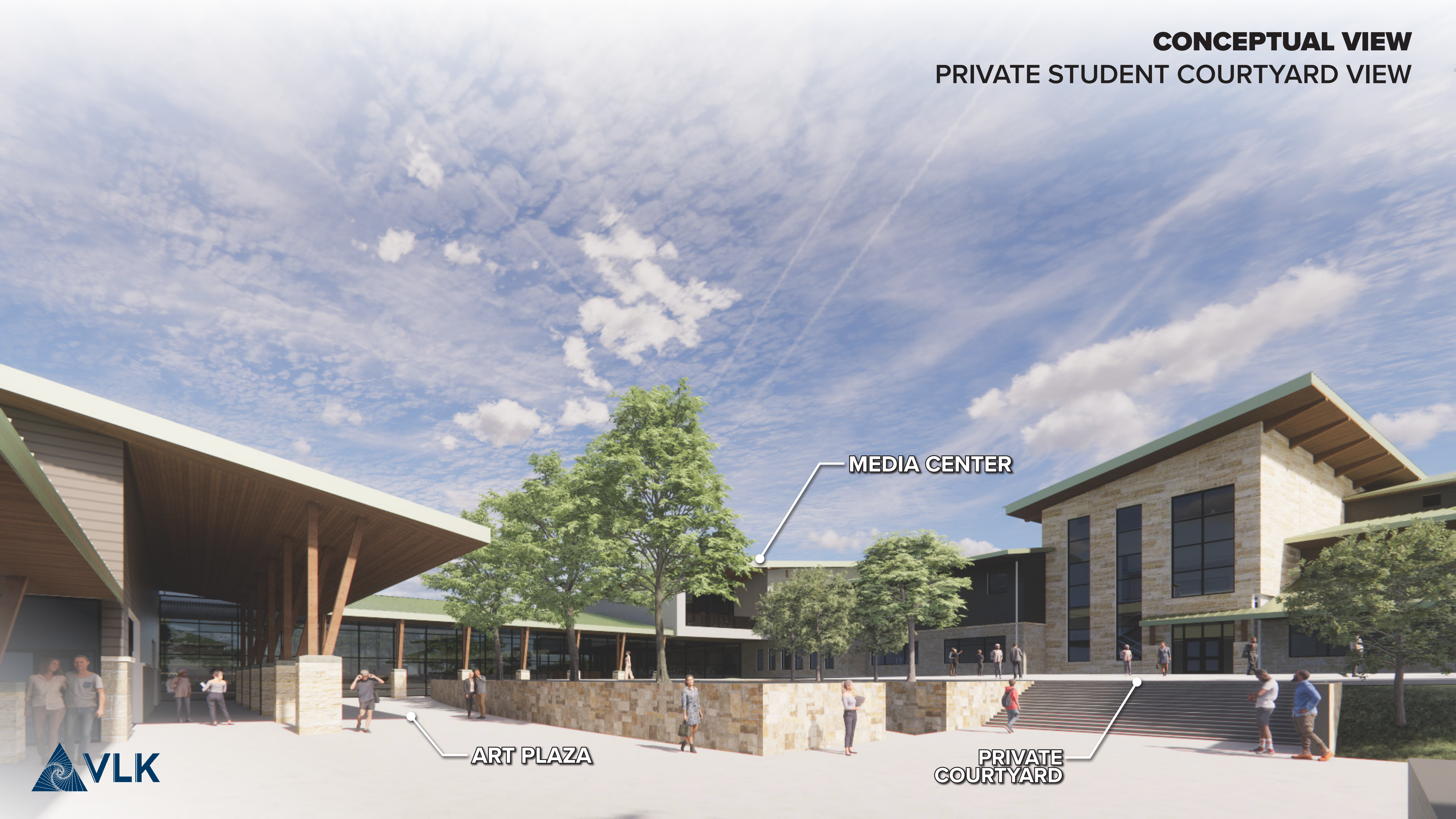
**FINE ARTS
LOBBY ENTRY**

LT HIGH SCHOOL
**PERFORMING ARTS
CENTER**

**PUBLIC EVENT
PLAZA**



CONCEPTUAL VIEW
PRIVATE STUDENT COURTYARD VIEW



MEDIA CENTER

ART PLAZA

PRIVATE
COURTYARD



**CONCEPTUAL VIEW
STUDENT ENTRY**

**STUDENT
ENTRY**

BISTRO

**PRIVATE
COURTYARD**



**CONCEPTUAL VIEW
PRIVATE COURTYARD**

BISTRO

MEDIA CENTER

**DINING COMMONS
CONNECTOR**

**CONCEPTUAL VIEW
ATHLETICS ENTRY**

**ACADEMIC
BUILDING**

**STUDENT
ENTRY**

**LT LAKE TRAVIS
ATHLETICS**

**ATHLETICS
LOBBY ENTRY**



LT[™]

**THANK
YOU!**

VLK

