

Lake Travis Independent School District

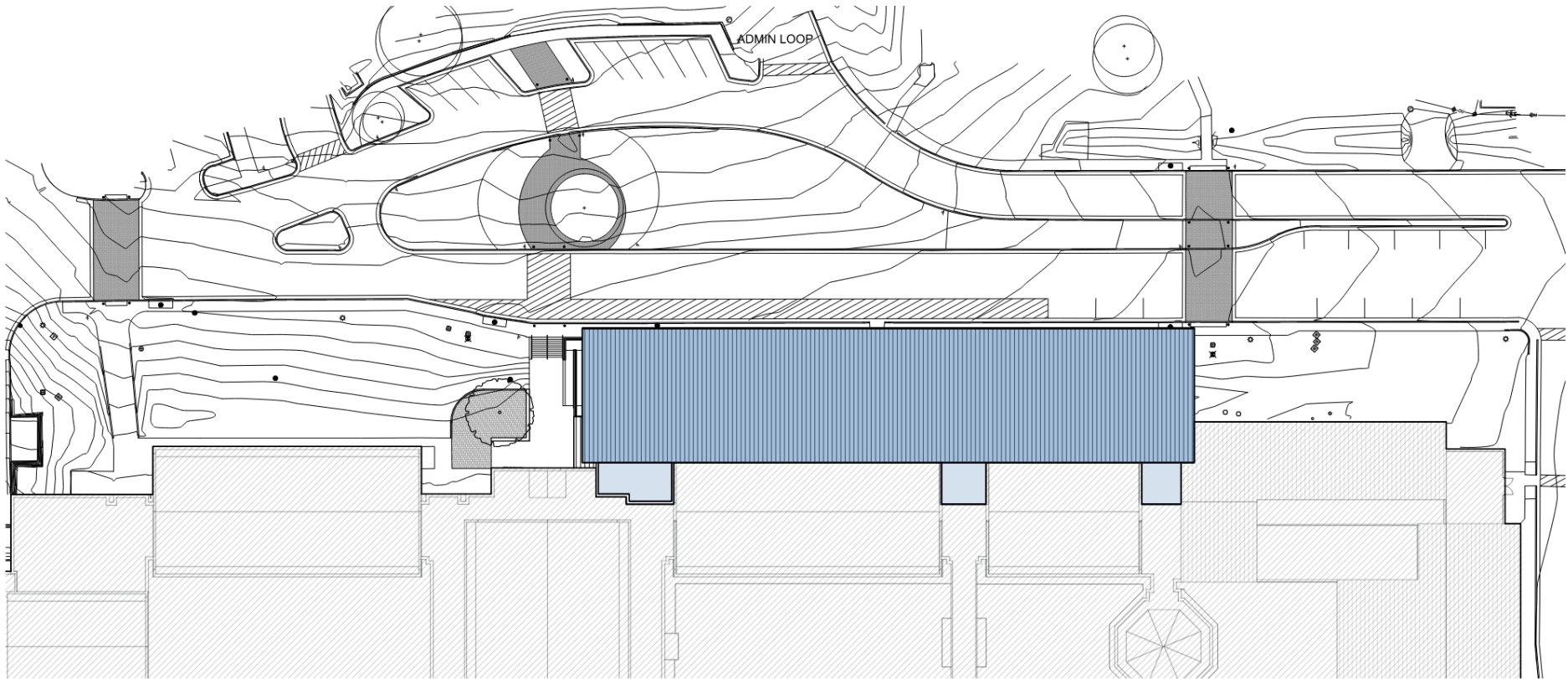


High School Science Addition



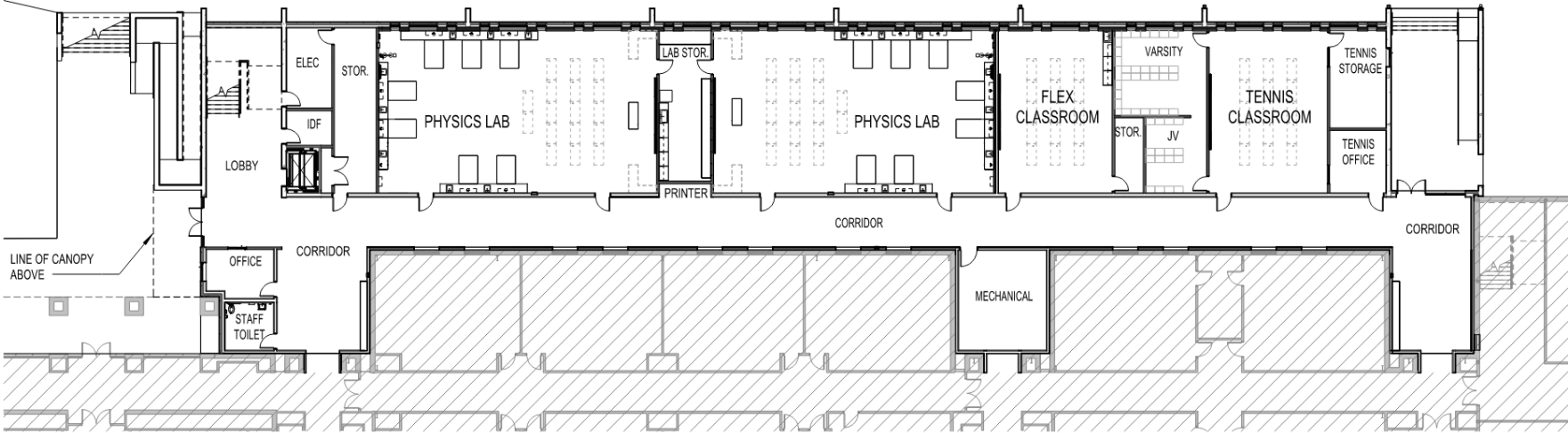


Overall Site Plan



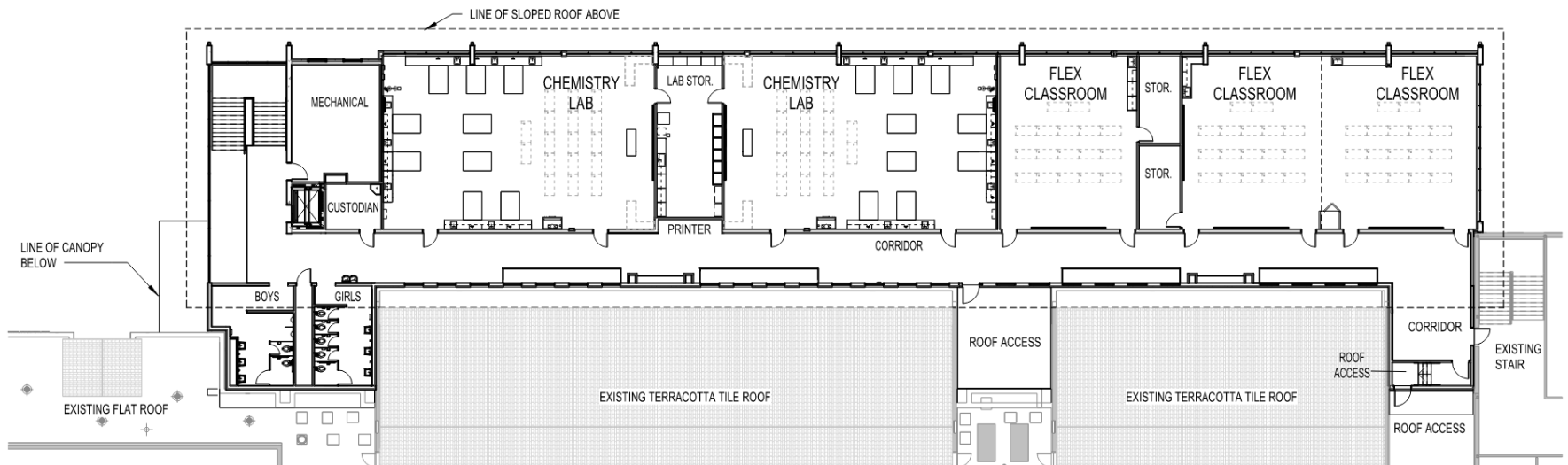
Site Plan

SPILLMAN LOOP



27,360 SF Total Conditioned Space

First Floor Plan



27,360 SF Total Conditioned Space

Second Floor Plan



Existing View from Spillman Loop



Proposed Building View from Spillman Loop



View of Entry Plaza



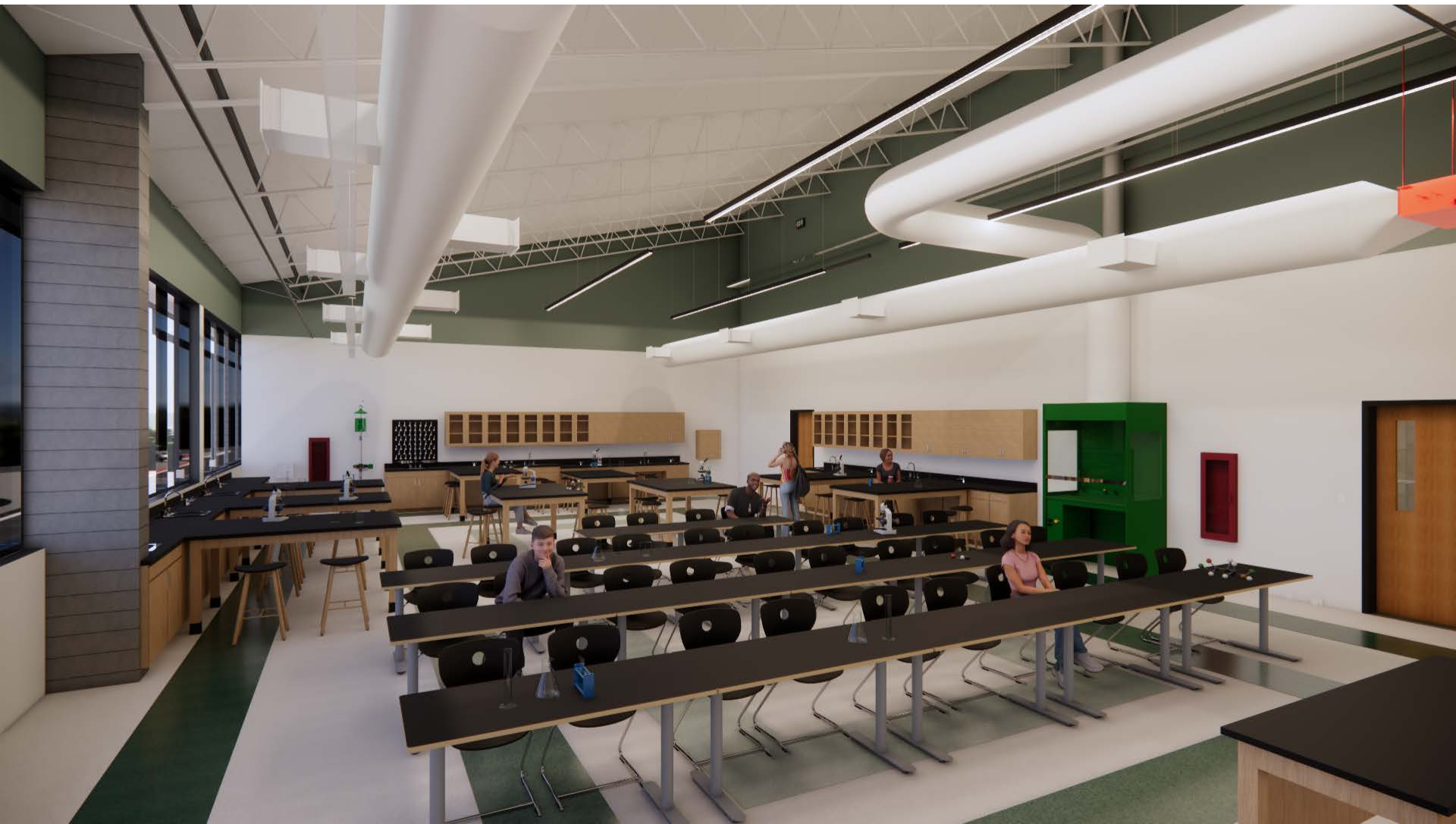
View of Open Stair



View of Second Floor Corridor



View of Physics Classroom



View of Chemistry Classroom

