

Enrollment Projections Overview



School enrollment projections are estimates of how many students will enroll with Alexandria City Public Schools (ACPS) in the future. They are a vital part of educational planning at ACPS to make informed decisions about budgeting, resources and adapting to changing student needs.

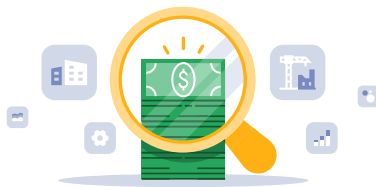
How are Enrollment Projections Used?

Enables ACPS to better prepare our schools for enrollment.



Critical for City support of the ACPS budget.

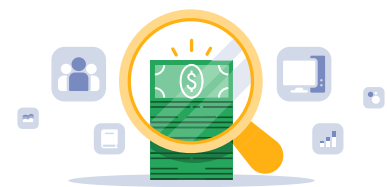
How Does Enrollment Data Connect with the Budget?



Capital Improvement Plan (CIP) Budget

Capacity projects are informed by the ten-year projection to accommodate capacity needs.

Non-capacity projects use enrollment to prioritize work and identify when and how projects could be completed. A change in space use could also result in a non-capacity CIP project.



Operating Budget

The enrollment projections inform school staffing and school budgets where formulas apply.

Enrollment projections could inform operating allocation depending on budget guidance from the City.

Important Information to Know About Enrollment Projections

ACPS works collaboratively with the City of Alexandria Planning and Zoning staff to develop the enrollment projections. Key information shared includes future residential construction assumptions.

The projection uses Kindergarten Capture and Cohort Survival Rates.

What Factors are Included in Projections?



BIRTHS

Kindergarten Capture Rate



SEP. 30 ENROLLMENT

Enrollment by Grade and School
Cohort Survival Rates (How students progress from one grade to another.)



NEW HOUSING

City of Alexandria Planning and Zoning provides:
Student Generation Rates
When and Where There Will Be New Construction



ACPS K-12 PROJECTIONS

Timeline



Key Terms

Enrollment Number of active students enrolled at ACPS on September 30 of each school year as detailed in the Fall Membership Report to the School Board.

Cohort Survival Rate (CSR) The ratio of the number of students enrolled in each grade to the number enrolled the prior year in the earlier grade.

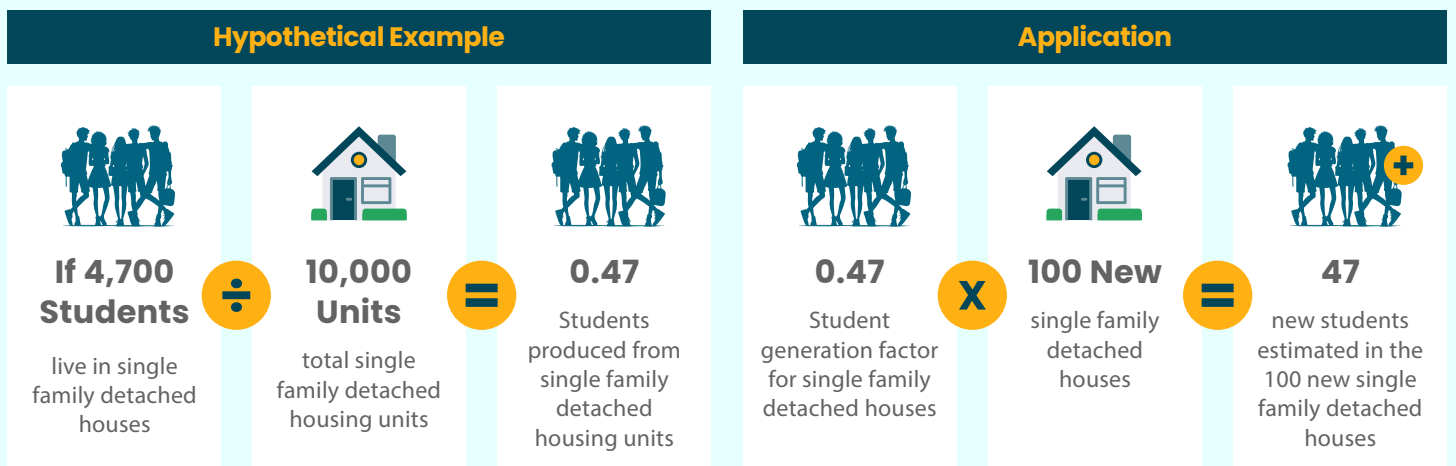
- CSR varies from school to school. Alexandria being an urban environment, experiences a high level of transiency.
- ACPS works with the City to anticipate new developments that may impact schools. General development and in/out migration is captured in this ratio.

Kindergarten Capture Kindergarten capture rate refers to the share of births that become ACPS kindergarten students five years later.

Projection Accuracy ACPS aims to be within 1-2% accuracy from the total enrollment to projected enrollment annually.

Student Generation Rates The City of Alexandria produces this factor, which represent the ratio of enrolled ACPS students who live in Alexandria City to the number of residential housing units in Alexandria City. The City of Alexandria Department of Planning & Zoning annually collaborate on this rate using historical enrollment and residential property data to estimate the number of students that are expected to join the school system from new residential development.

Example of How the City of Alexandria Calculates Student Generation Rates



Projection Accuracy: ACPS aims to be within 1-2% accuracy from the total enrollment to projected enrollment annually.