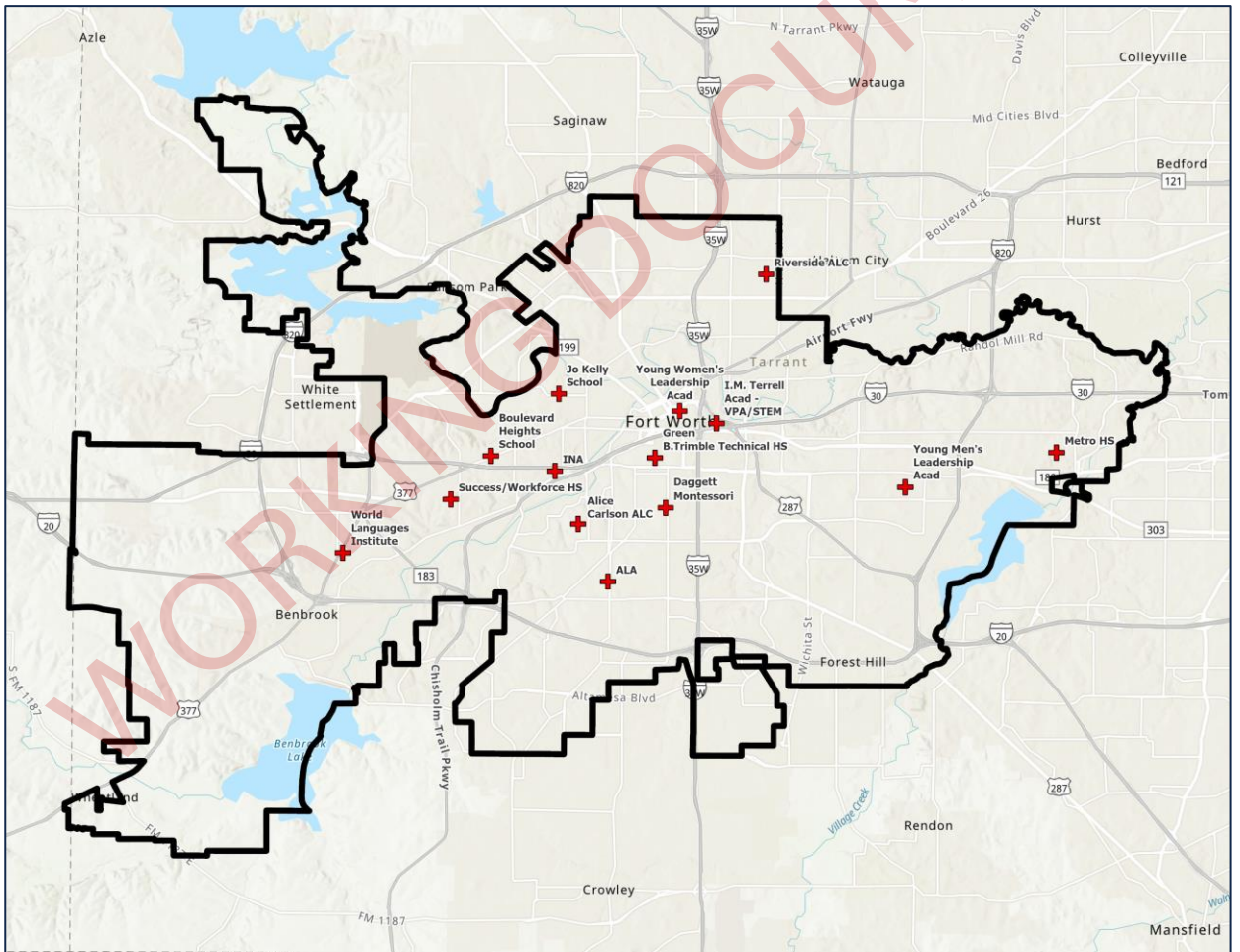


CHOICE SCHOOLS

CHOICE SCHOOLS MAP



PYRAMID LEVEL DATA

CHOICE SCHOOLS

TASK FORCE NOTES

- INA Concerns: meeting capacity for student / teacher ratios based on building capacity EB students (1:15)
- Schools of Choice: bringing high capacity of out of district students leads to CCMR, CTE, PTECH revenue
- Misconception that our student population is high performing and facilities for sped / 504 are not needed
- Educational adequacy data is lacking / can more data for our school be more represented?
- Concerns with auditorium and art facilities space.
- Furniture concerns: old outdated desks, desks are that are to small
- Increasing various schools of choice options / libraries

PYRAMID LEVEL DATA

CHOICE SCHOOLS

PYRAMID NEEDS BY CAMPUS

Name	Size	Current Replacement Value	Current Need	Current FCI	5 Year FCI	10 Year FCI
ALA	60,148	\$ 32,785,266	\$ 3,620,439	11.04%	27.64%	32.14%
Alice Carlson ALC	49,176	\$ 31,290,441	\$ 5,566,269	17.79%	27.31%	37.64%
Boulevard Heights School	50,514	\$ 29,631,849	\$ 7,139,720	24.09%	34.55%	40.94%
Daggett Montessori	83,729	\$ 47,479,189	\$ 4,419,108	9.31%	22.37%	28.61%
Green B. Trimble Technical HS	363,320	\$ 214,736,054	\$ 6,148,883	2.86%	7.02%	12.35%
I.M. Terrell Acad - VPA/STEM	185,000	\$ 173,595,500	\$ 5,345,543	3.08%	5.58%	11.67%
INA	37,147	\$ 16,584,614	\$ 4,156,526	25.06%	37.95%	43.63%
Jo Kelly School	21,428	\$ 14,292,129	\$ 2,500,457	17.50%	25.01%	30.83%
Metro HS	86,000	\$ 53,882,568	\$ 2,907,824	5.40%	19.17%	27.83%
Riverside ALC	42,972	\$ 25,597,039	\$ 2,525,605	9.87%	16.15%	33.22%
Success/Workforce HS	54,931	\$ 33,246,616	\$ 4,436,928	13.35%	24.57%	29.03%
World Languages Institute	64,133	\$ 39,169,000	\$ 5,879,678	15.01%	27.95%	38.11%
Young Men's Leadership Acad	132,172	\$ 42,765,221	\$ 141,700	0.33%	1.41%	5.83%
Young Women's Leadership Acad	78,000	\$ 45,659,250	\$ -	0.00%	5.14%	7.01%

PYRAMID LEVEL DATA

CHOICE SCHOOLS

FCI GRID

Name	2024	2025	2026	2027	2028	2029	2030	2031	2032	2033
ALA	11.04%	14.42%	14.42%	18.64%	27.64%	29.21%	31.95%	31.96%	32.14%	32.14%
Alice Carlson ALC	17.79%	19.42%	19.77%	20.83%	27.31%	32.21%	33.32%	34.74%	36.80%	37.64%
Boulevard Heights School	24.09%	30.70%	32.37%	34.16%	34.55%	34.55%	38.06%	38.22%	39.90%	40.94%
Daggett Montessori	9.31%	13.06%	15.00%	19.84%	22.37%	22.56%	27.52%	27.65%	28.52%	28.61%
Green B.Trimble Technical HS	2.86%	2.97%	6.67%	6.72%	7.02%	8.73%	9.01%	9.02%	12.34%	12.35%
I.M. Terrell Acad - VPA/STEM	3.08%	4.66%	4.67%	4.79%	5.58%	6.00%	9.27%	9.83%	11.35%	11.67%
INA	25.06%	37.12%	37.12%	37.56%	37.95%	38.38%	41.94%	41.94%	42.87%	43.63%
Jo Kelly School	17.50%	22.77%	22.77%	25.01%	25.01%	25.47%	26.44%	27.42%	29.74%	30.83%
Metro HS	5.40%	8.82%	9.96%	18.69%	19.17%	19.36%	25.09%	25.53%	26.98%	27.83%
Riverside ALC	9.87%	14.97%	14.97%	15.19%	16.15%	16.22%	30.76%	31.37%	32.65%	33.22%
Success/Workforce HS	13.35%	19.38%	19.38%	22.47%	24.57%	24.63%	28.37%	28.54%	29.03%	29.03%
World Languages Institute	15.01%	26.65%	26.65%	27.95%	27.95%	28.12%	34.86%	36.11%	37.82%	38.11%
Young Men's Leadership Acad	0.33%	1.41%	1.41%	1.41%	1.41%	1.49%	4.93%	5.35%	5.41%	5.83%
Young Women's Leadership Acad	0.00%	3.87%	5.08%	5.14%	5.14%	5.99%	6.39%	6.39%	6.58%	7.01%

ALA

School:	ALA
Original Year Built	1922
Capacity	525
Current Enrollment	331

COSTS BY SYSTEM BY YEAR

ALA	2024	2025	2026	2027	2028	2029	2030	2031	2032	2033
Shell	\$1,061,384	\$ -	\$ -	\$ 587,032	\$2,496,370	\$ -	\$ -	\$ -	\$ -	\$ -
Services - Mechanical	\$1,785,555	\$ -	\$ -	\$ 275,275	\$ -	\$ 975	\$ 87,425	\$ -	\$ -	\$ -
Interiors	\$ 338,000	\$ -	\$ -	\$ 455,000	\$ 357,240	\$ 403,000	\$ 442,000	\$ 3,900	\$ 59,475	\$ -
Services - Electrical	\$ 435,500	\$1,107,014	\$ -	\$ -	\$ -	\$ -	\$ 369,607	\$ -	\$ -	\$ -
Equipment and Furnishings	\$ -	\$ -	\$ -	\$ -	\$ -	\$ -	\$ -	\$ -	\$ -	\$ -
Building Sitework	\$ -	\$ -	\$ -	\$ 65,000	\$ -	\$ 110,500	\$ -	\$ -	\$ -	\$ -
Substructure	\$ -	\$ -	\$ -	\$ -	\$ 97,500	\$ -	\$ -	\$ -	\$ -	\$ -

COSTS BY PRIORITY BY YEAR

ALA	2024	2025	2026	2027	2028	2029	2030	2031	2032	2033
High	\$ 3,131,636	\$1,107,014	\$ -	\$ -	\$ 422,500	\$ -	\$ -	\$ -	\$ -	\$ -
Medium	\$ 488,804	\$ -	\$ -	\$1,382,307	\$2,528,610	\$ 514,475	\$ -	\$ -	\$ -	\$ -
Low	\$ -	\$ -	\$ -	\$ -	\$ -	\$ -	\$ 899,032	\$ 3,900	\$ 59,475	\$ -

ALICE CARLSON ALC

School:	Alice Carlson ALC
Original Year Built	1927
Capacity	342
Current Enrollment	380

COSTS BY SYSTEM BY YEAR

Alice Carlson ALC	2024	2025	2026	2027	2028	2029	2030	2031	2032	2033
Shell	\$1,276,410	\$ -	\$ -	\$ -	\$1,140,012	\$ -	\$ -	\$ 91,000	\$ -	\$ -
Services - Mechanical	\$1,117,083	\$ -	\$ -	\$ 331,013	\$ 286,912	\$ -	\$ 31,850	\$ 22,750	\$ -	\$ -
Interiors	\$1,097,730	\$ 509,833	\$ 109,350	\$ -	\$ 493,232	\$ 49,020	\$ -	\$ -	\$ 597,204	\$ -
Services - Electrical	\$ 465,673	\$ -	\$ -	\$ -	\$ -	\$1,045,327	\$ 315,808	\$ 329,182	\$ 49,097	\$ 261,789
Equipment and Furnishings	\$ 154,700	\$ -	\$ -	\$ -	\$ -	\$ -	\$ -	\$ -	\$ -	\$ -
Building Sitework	\$1,259,817	\$ -	\$ -	\$ -	\$ -	\$ 440,804	\$ -	\$ -	\$ -	\$ -
Substructure	\$ 194,855	\$ -	\$ -	\$ -	\$ 107,645	\$ -	\$ -	\$ -	\$ -	\$ -

COSTS BY PRIORITY BY YEAR

Alice Carlson ALC	2024	2025	2026	2027	2028	2029	2030	2031	2032	2033
High	\$ 5,267,544	\$ 509,833	\$ 109,350	\$ 118,950	\$ 437,757	\$ -	\$ -	\$ -	\$ -	\$ -
Medium	\$ 64,219	\$ -	\$ -	\$ 212,063	\$1,590,044	\$1,535,152	\$ 315,808	\$ 3,912	\$ -	\$ -
Low	\$ 234,507	\$ -	\$ -	\$ -	\$ -	\$ -	\$ 31,850	\$ 439,020	\$ 646,302	\$ 261,789

BOULEVARD HEIGHTS SCHOOL

School:	Boulevard Heights School
Original Year Built	1909
Capacity	-
Current Enrollment	31

COSTS BY SYSTEM BY YEAR

Boulevard Heights School	2024	2025	2026	2027	2028	2029	2030	2031	2032	2033
Shell	\$ 433,208	\$ -	\$ -	\$ 528,384	\$ -	\$ -	\$ -	\$ -	\$ 65,000	\$ -
Services - Mechanical	\$2,663,531	\$ 52,000	\$ 494,829	\$ -	\$ -	\$ -	\$ 334,750	\$ -	\$ -	\$ -
Interiors	\$2,771,250	\$ -	\$ -	\$ -	\$ -	\$ -	\$ 399,946	\$ -	\$ 432,772	\$ 307,875
Services - Electrical	\$ 614,826	\$1,063,154	\$ -	\$ -	\$ -	\$ -	\$ 305,135	\$ 47,438	\$ -	\$ -
Equipment and Furnishings	\$ 443,733	\$ -	\$ -	\$ -	\$ 52,000	\$ -	\$ -	\$ -	\$ -	\$ -
Building Sitework	\$ 32,500	\$ 843,050	\$ -	\$ -	\$ 65,000	\$ -	\$ -	\$ -	\$ -	\$ -
Substructure	\$ 180,672	\$ -	\$ -	\$ -	\$ -	\$ -	\$ -	\$ -	\$ -	\$ -

COSTS BY PRIORITY BY YEAR

Boulevard Heights School	2024	2025	2026	2027	2028	2029	2030	2031	2032	2033
Urgent	\$ 14,364	\$ -	\$ -	\$ -	\$ -	\$ -	\$ -	\$ -	\$ -	\$ -
High	\$ 5,850,018	\$1,958,204	\$ 494,829	\$ -	\$ -	\$ -	\$ -	\$ -	\$ -	\$ -
Medium	\$ 87,610	\$ -	\$ -	\$ 528,384	\$ 117,000	\$ -	\$ 305,135	\$ -	\$ -	\$ -
Low	\$ 1,187,729	\$ -	\$ -	\$ -	\$ -	\$ -	\$ 734,696	\$ 47,438	\$ 497,772	\$ 307,875

DAGGETT MONTESSORI

School:	Daggett Montessori
Original Year Built	1970
Capacity	512
Current Enrollment	548

COSTS BY SYSTEM BY YEAR

Daggett Montessori	2024	2025	2026	2027	2028	2029	2030	2031	2032	2033
Shell	\$1,517,598	\$ -	\$ -	\$1,951,950	\$ 409,500	\$ -	\$ 187,058	\$ -	\$ 52,000	\$ -
Services - Mechanical	\$1,546,005	\$ 72,800	\$ 670,020	\$ 332,150	\$ 111,475	\$ -	\$ 33,800	\$ -	\$ -	\$ -
Interiors	\$ 711,433	\$ 195,000	\$ 253,937	\$ -	\$ 452,305	\$ 87,410	\$1,320,114	\$ -	\$ 104,677	\$ 45,500
Services - Electrical	\$ 579,072	\$1,512,991	\$ -	\$ -	\$ -	\$ -	\$ 773,176	\$ -	\$ -	\$ -
Equipment and Furnishings	\$ -	\$ -	\$ -	\$ -	\$ -	\$ -	\$ -	\$ -	\$ 101,400	\$ -
Building Sitework	\$ 65,000	\$ -	\$ -	\$ 13,000	\$ 227,500	\$ -	\$ 44,200	\$ 58,500	\$ 156,000	\$ -
Substructure	\$ -	\$ -	\$ -	\$ -	\$ -	\$ -	\$ -	\$ -	\$ -	\$ -

COSTS BY PRIORITY BY YEAR

Daggett Montessori	2024	2025	2026	2027	2028	2029	2030	2031	2032	2033
High	\$ 3,126,761	\$1,512,991	\$ -	\$ -	\$ -	\$ -	\$ -	\$ -	\$ -	\$ -
Medium	\$ 1,292,346	\$ 267,800	\$ 923,957	\$2,297,100	\$1,200,780	\$ 87,410	\$ 13,000	\$ -	\$ -	\$ -
Low	\$ -	\$ -	\$ -	\$ -	\$ -	\$ -	\$2,345,348	\$ 58,500	\$ 414,077	\$ 45,500

GREEN B. TRIMBLE TECHNICAL HS

School:	Trimble Tech HS
Original Year Built	1918
Capacity	2,118
Current Enrollment	1,941

COSTS BY SYSTEM BY YEAR

Green B. Trimble Technical HS	2024	2025	2026	2027	2028	2029	2030	2031	2032	2033
Shell	\$1,534,000	\$ 26,000	\$7,666,750	\$ 91,000	\$ -	\$ -	\$ -	\$ -	\$3,380,000	\$ -
Services - Mechanical	\$3,435,254	\$ 5,850	\$ -	\$ 17,550	\$ -	\$3,674,667	\$ 253,500	\$ 24,050	\$ 198,250	\$ 3,250
Interiors	\$ 215,864	\$ 182,000	\$ 275,080	\$ -	\$ 651,300	\$ -	\$ 37,440	\$ -	\$1,385,150	\$ 6,500
Services - Electrical	\$ 901,365	\$ 13,000	\$ -	\$ -	\$ -	\$ -	\$ 185,174	\$ -	\$2,171,394	\$ -
Equipment and Furnishings	\$ 62,400	\$ -	\$ -	\$ -	\$ -	\$ -	\$ 120,900	\$ -	\$ -	\$ -
Building Sitework	\$ -	\$ -	\$ -	\$ -	\$ -	\$ -	\$ -	\$ -	\$ -	\$ -
Substructure	\$ -	\$ -	\$ -	\$ -	\$ -	\$ -	\$ -	\$ -	\$ -	\$ -

COSTS BY PRIORITY BY YEAR

Green B. Trimble Technical HS	2024	2025	2026	2027	2028	2029	2030	2031	2032	2033
High	\$ 1,995,183	\$ 104,000	\$7,666,750	\$ -	\$ -	\$3,674,667	\$ -	\$ -	\$ -	\$ -
Medium	\$ 4,153,700	\$ 122,850	\$ 275,080	\$ 91,000	\$ 651,300	\$ -	\$ 310,120	\$ -	\$3,380,000	\$ -
Low	\$ -	\$ -	\$ -	\$ 17,550	\$ -	\$ -	\$ 286,893	\$ 24,050	\$3,754,794	\$ 9,750

I.M. TERRELL ACADEMY

School:	I.M. Terrell Academy
Original Year Built	1909
Capacity	731
Current Enrollment	476

COSTS BY SYSTEM BY YEAR

I.M. Terrell Acad - VPA/STEM	2024	2025	2026	2027	2028	2029	2030	2031	2032	2033
Shell	\$ 198,250	\$2,219,263	\$ -	\$ -	\$ -	\$ -	\$3,439,488	\$ -	\$ 78,000	\$ 91,000
Services - Mechanical	\$2,449,241	\$ 487,500	\$ 13,000	\$ 29,250	\$ 83,850	\$ 723,447	\$ 508,749	\$ -	\$ 386,750	\$ 86,450
Interiors	\$ 877,500	\$ 32,500	\$ -	\$ -	\$ -	\$ -	\$1,359,977	\$ 958,573	\$ 299,000	\$ 273,000
Services - Electrical	\$1,820,553	\$ 13,000	\$ -	\$ 179,816	\$1,213,876	\$ -	\$ 272,966	\$ -	\$1,877,140	\$ 105,793
Equipment and Furnishings	\$ -	\$ -	\$ -	\$ -	\$ -	\$ -	\$ 6,500	\$ -	\$ -	\$ -
Building Sitework	\$ -	\$ -	\$ -	\$ 1,560	\$ 65,000	\$ 3,900	\$ 100,555	\$ -	\$ -	\$ -
Substructure	\$ -	\$ -	\$ -	\$ -	\$ -	\$ -	\$ -	\$ -	\$ -	\$ -

COSTS BY PRIORITY BY YEAR

I.M. Terrell Acad - VPA/STEM	2024	2025	2026	2027	2028	2029	2030	2031	2032	2033
High	\$ 2,616,804	\$ 487,500	\$ -	\$ -	\$ 22,750	\$ 302,702	\$ -	\$ -	\$ -	\$ -
Medium	\$ 2,728,739	\$2,264,763	\$ -	\$ 181,376	\$1,278,876	\$ -	\$3,439,917	\$ -	\$ 753,881	\$ 37,933
Low	\$ -	\$ -	\$ 13,000	\$ 29,250	\$ 61,100	\$ 424,645	\$2,248,318	\$ 958,573	\$1,887,009	\$ 518,310

INA

School:	INA
Original Year Built	1955
Capacity	206
Current Enrollment	415

COSTS BY SYSTEM BY YEAR

INA	2024	2025	2026	2027	2028	2029	2030	2031	2032	2033
Shell	\$1,639,017	\$ -	\$ -	\$ 19,500	\$ -	\$ -	\$ -	\$ -	\$ -	\$ -
Services - Mechanical	\$1,068,714	\$ 186,520	\$ -	\$ 52,325	\$ -	\$ -	\$ 152,100	\$ -	\$ -	\$ 65,000
Interiors	\$1,276,807	\$ 518,816	\$ -	\$ -	\$ -	\$ -	\$ 31,243	\$ -	\$ 154,509	\$ 60,549
Services - Electrical	\$ 110,652	\$ 582,138	\$ -	\$ -	\$ -	\$ -	\$ 368,503	\$ -	\$ -	\$ -
Equipment and Furnishings	\$ 44,046	\$ -	\$ -	\$ -	\$ -	\$ -	\$ 39,000	\$ -	\$ -	\$ -
Building Sitework	\$ 17,290	\$ 712,712	\$ -	\$ -	\$ 65,000	\$ 71,500	\$ -	\$ -	\$ -	\$ -
Substructure	\$ -	\$ -	\$ -	\$ -	\$ -	\$ -	\$ -	\$ -	\$ -	\$ -

COSTS BY PRIORITY BY YEAR

INA	2024	2025	2026	2027	2028	2029	2030	2031	2032	2033
High	\$ 3,801,043	\$2,000,185	\$ -	\$ -	\$ -	\$ -	\$ -	\$ -	\$ -	\$ -
Medium	\$ 355,483	\$ -	\$ -	\$ 71,825	\$ 65,000	\$ 71,500	\$ 172,866	\$ -	\$ -	\$ -
Low	\$ -	\$ -	\$ -	\$ -	\$ -	\$ -	\$ 417,980	\$ -	\$ 154,509	\$ 125,549

JO KELLY SCHOOL

School:	Jo Kelly School
Original Year Built	1977
Capacity	-
Current Enrollment	41

COSTS BY SYSTEM BY YEAR

Jo Kelly School	2024	2025	2026	2027	2028	2029	2030	2031	2032	2033
Shell	\$1,096,290	\$ -	\$ -	\$ -	\$ -	\$ -	\$ -	\$ -	\$ -	\$ -
Services - Mechanical	\$1,027,633	\$ -	\$ -	\$ 77,350	\$ -	\$ -	\$ 11,050	\$ 7,800	\$ 66,300	\$ -
Interiors	\$ 38,871	\$ 309,243	\$ -	\$ 242,835	\$ -	\$ -	\$ -	\$ -	\$ 265,307	\$ 154,621
Services - Electrical	\$ 293,637	\$ 444,945	\$ -	\$ -	\$ -	\$ -	\$ 127,703	\$ 133,110	\$ -	\$ -
Equipment and Furnishings	\$ -	\$ -	\$ -	\$ -	\$ -	\$ -	\$ -	\$ -	\$ -	\$ -
Building Sitework	\$ 32,760	\$ -	\$ -	\$ -	\$ -	\$ 65,000	\$ -	\$ -	\$ -	\$ -
Substructure	\$ 11,266	\$ -	\$ -	\$ -	\$ -	\$ -	\$ -	\$ -	\$ -	\$ -

COSTS BY PRIORITY BY YEAR

Jo Kelly School	2024	2025	2026	2027	2028	2029	2030	2031	2032	2033
Urgent	\$ 6,500	\$ -	\$ -	\$ -	\$ -	\$ -	\$ -	\$ -	\$ -	\$ -
High	\$ 2,169,655	\$ 754,188	\$ -	\$ 77,350	\$ -	\$ -	\$ -	\$ -	\$ -	\$ -
Medium	\$ 324,301	\$ -	\$ -	\$ 242,835	\$ -	\$ 65,000	\$ 127,703	\$ 1,581	\$ -	\$ -
Low	\$ -	\$ -	\$ -	\$ -	\$ -	\$ -	\$ 11,050	\$ 139,329	\$ 331,607	\$ 154,621

METRO HS

School:	Metro HS
Original Year Built	1980
Capacity	-
Current Enrollment	38

COSTS BY SYSTEM BY YEAR

Metro HS	2024	2025	2026	2027	2028	2029	2030	2031	2032	2033
Shell	\$ -	\$ 13,000	\$ -	\$ 4,413,832	\$ 260,000	\$ -	\$ -	\$ -	\$ 97,500	\$ -
Services - Mechanical	\$ 2,703,074	\$ -	\$ 250,250	\$ 221,390	\$ -	\$ -	\$ 734,942	\$ -	\$ 3,900	\$ 432,250
Interiors	\$ 65,000	\$ -	\$ -	\$ 35,100	\$ -	\$ -	\$ 117,000	\$ 234,000	\$ 682,500	\$ -
Services - Electrical	\$ -	\$ 1,832,204	\$ -	\$ -	\$ -	\$ -	\$ 2,233,669	\$ -	\$ -	\$ -
Equipment and Furnishings	\$ 130,000	\$ -	\$ -	\$ -	\$ -	\$ -	\$ -	\$ -	\$ -	\$ 25,350
Building Sitework	\$ 9,750	\$ -	\$ 364,000	\$ 32,500	\$ -	\$ 104,000	\$ -	\$ -	\$ -	\$ -
Substructure	\$ -	\$ -	\$ -	\$ -	\$ -	\$ -	\$ -	\$ -	\$ -	\$ -

COSTS BY PRIORITY BY YEAR

Metro HS	2024	2025	2026	2027	2028	2029	2030	2031	2032	2033
High	\$ 1,908,514	\$ 1,845,204	\$ 614,250	\$ 143,390	\$ -	\$ -	\$ -	\$ -	\$ -	\$ -
Medium	\$ 999,310	\$ -	\$ -	\$ 4,559,432	\$ 260,000	\$ 104,000	\$ 678,954	\$ -	\$ -	\$ -
Low	\$ -	\$ -	\$ -	\$ -	\$ -	\$ -	\$ 2,406,657	\$ 234,000	\$ 783,900	\$ 457,600

RIVERSIDE ALC

School:	Riverside ALC
Original Year Built	1955
Capacity	365
Current Enrollment	202

COSTS BY SYSTEM BY YEAR

Riverside ALC	2024	2025	2026	2027	2028	2029	2030	2031	2032	2033
Shell	\$ 902,673	\$ -	\$ -	\$ -	\$ -	\$ -	\$ 2,203,500	\$ 130,000	\$ -	\$ -
Services - Mechanical	\$ 1,247,232	\$ -	\$ -	\$ 56,875	\$ -	\$ 17,550	\$ -	\$ 8,060	\$ -	\$ -
Interiors	\$ 45,500	\$ -	\$ -	\$ -	\$ 245,522	\$ -	\$ 368,714	\$ 19,500	\$ 326,300	\$ 65,000
Services - Electrical	\$ -	\$ 876,626	\$ -	\$ -	\$ -	\$ -	\$ 630,078	\$ -	\$ -	\$ -
Equipment and Furnishings	\$ 265,200	\$ -	\$ -	\$ -	\$ -	\$ -	\$ -	\$ -	\$ -	\$ 19,500
Building Sitework	\$ 65,000	\$ 429,000	\$ -	\$ -	\$ -	\$ -	\$ 520,000	\$ -	\$ -	\$ 62,400
Substructure	\$ -	\$ -	\$ -	\$ -	\$ -	\$ -	\$ -	\$ -	\$ -	\$ -

COSTS BY PRIORITY BY YEAR

Riverside ALC	2024	2025	2026	2027	2028	2029	2030	2031	2032	2033
High	\$ 1,629,712	\$ 876,626	\$ -	\$ 56,875	\$ -	\$ -	\$ -	\$ -	\$ -	\$ -
Medium	\$ 549,573	\$ 429,000	\$ -	\$ -	\$ 245,522	\$ 17,550	\$ 257,985	\$ 8,060	\$ -	\$ -
Low	\$ 346,320	\$ -	\$ -	\$ -	\$ -	\$ -	\$ 3,464,307	\$ 149,500	\$ 326,300	\$ 146,900

SUCCESS/WORKFORCE HS

School:	Success/Workforce HS
Original Year Built	1950
Capacity	525
Current Enrollment	508

COSTS BY SYSTEM BY YEAR

Success/Workforce HS	2024	2025	2026	2027	2028	2029	2030	2031	2032	2033
Shell	\$3,062,485	\$ -	\$ -	\$ -	\$ 235,167	\$ -	\$ -	\$ -	\$ -	\$ -
Services - Mechanical	\$1,069,814	\$ -	\$ -	\$ 220,740	\$ 350,350	\$ -	\$ 31,850	\$ -	\$ -	\$ -
Interiors	\$ 224,250	\$ 58,500	\$ -	\$ 773,500	\$ 66,458	\$ 19,500	\$ 409,500	\$ 58,500	\$ 156,000	\$ -
Services - Electrical	\$ 80,379	\$1,662,215	\$ -	\$ -	\$ -	\$ -	\$ 787,844	\$ -	\$ -	\$ -
Equipment and Furnishings	\$ -	\$ -	\$ -	\$ 32,500	\$ 46,800	\$ -	\$ -	\$ -	\$ 7,800	\$ -
Building Sitework	\$ -	\$ 286,000	\$ -	\$ -	\$ -	\$ -	\$ 13,000	\$ -	\$ -	\$ -
Substructure	\$ -	\$ -	\$ -	\$ -	\$ -	\$ -	\$ -	\$ -	\$ -	\$ -

COSTS BY PRIORITY BY YEAR

Success/Workforce HS	2024	2025	2026	2027	2028	2029	2030	2031	2032	2033
High	\$ 4,222,428	\$1,935,215	\$ -	\$ -	\$ -	\$ -	\$ -	\$ -	\$ -	\$ -
Medium	\$ 214,500	\$ 71,500	\$ -	\$1,026,740	\$ 698,775	\$ 19,500	\$ 375,032	\$ -	\$ -	\$ -
Low	\$ -	\$ -	\$ -	\$ -	\$ -	\$ -	\$ 867,162	\$ 58,500	\$ 163,800	\$ -

WORLD LANGUAGES INSTITUTE

School:	World Languages Institute
Original Year Built	1950
Capacity	656
Current Enrollment	520

COSTS BY SYSTEM BY YEAR

World Languages Institute	2024	2025	2026	2027	2028	2029	2030	2031	2032	2033
Shell	\$2,633,367	\$ 102,638	\$ -	\$ 78,000	\$ -	\$ -	\$ -	\$ -	\$ 669,387	\$ -
Services - Mechanical	\$1,773,764	\$ 800,800	\$ -	\$ 373,402	\$ -	\$ -	\$ 500,734	\$ -	\$ -	\$ -
Interiors	\$1,452,797	\$ 699,193	\$ -	\$ -	\$ -	\$ -	\$ 587,275	\$ -	\$ -	\$ 112,281
Services - Electrical	\$ -	\$1,432,038	\$ -	\$ -	\$ -	\$ -	\$1,356,068	\$ 490,666	\$ -	\$ -
Equipment and Furnishings	\$ -	\$ -	\$ -	\$ -	\$ -	\$ -	\$ 130,000	\$ -	\$ -	\$ -
Building Sitework	\$ 19,750	\$1,477,034	\$ -	\$ 58,500	\$ -	\$ 65,000	\$ 66,898	\$ -	\$ -	\$ -
Substructure	\$ -	\$ 46,469	\$ -	\$ -	\$ -	\$ -	\$ -	\$ -	\$ -	\$ -

COSTS BY PRIORITY BY YEAR

World Languages Institute	2024	2025	2026	2027	2028	2029	2030	2031	2032	2033
High	\$ 5,867,788	\$4,558,172	\$ -	\$ -	\$ -	\$ -	\$ -	\$ -	\$ -	\$ -
Medium	\$ 11,890	\$ -	\$ -	\$ 509,902	\$ -	\$ 65,000	\$ 809,257	\$ 3,447	\$ 669,387	\$ -
Low	\$ -	\$ -	\$ -	\$ -	\$ -	\$ -	\$1,831,718	\$ 487,219	\$ -	\$ 112,281

YOUNG MEN'S LEADERSHIP ACADEMY

School:	Young Men's Leadership Academy
Original Year Built	1952
Capacity	713
Current Enrollment	425

COSTS BY SYSTEM BY YEAR

Young Men's Leadership Acad	2024	2025	2026	2027	2028	2029	2030	2031	2032	2033
Shell	\$ -	\$ -	\$ -	\$ -	\$ -	\$ -	\$ -	\$ -	\$ -	\$ 16,480
Services - Mechanical	\$ -	\$ 260,259	\$ -	\$ 2,600	\$ -	\$ -	\$ 95,910	\$ 172,575	\$ 15,600	\$ 62,481
Interiors	\$ 11,700	\$ 25,253	\$ -	\$ -	\$ -	\$ 33,771	\$ -	\$ 5,850	\$ 1,950	\$ 103,723
Services - Electrical	\$ -	\$ 174,461	\$ -	\$ -	\$ -	\$ -	\$ 1,364,086	\$ -	\$ 6,907	\$ -
Equipment and Furnishings	\$ -	\$ -	\$ -	\$ -	\$ -	\$ -	\$ -	\$ -	\$ -	\$ -
Building Sitework	\$ 130,000	\$ -	\$ -	\$ -	\$ -	\$ -	\$ 11,440	\$ -	\$ -	\$ -
Substructure	\$ -	\$ -	\$ -	\$ -	\$ -	\$ -	\$ -	\$ -	\$ -	\$ -

COSTS BY PRIORITY BY YEAR

Young Men's Leadership Acad	2024	2025	2026	2027	2028	2029	2030	2031	2032	2033
High	\$ -	\$ -	\$ -	\$ -	\$ -	\$ -	\$ -	\$ -	\$ -	\$ -
Medium	\$ 130,000	\$ 30,450	\$ -	\$ -	\$ -	\$ -	\$ 1,364,086	\$ -	\$ 2,375	\$ -
Low	\$ 11,700	\$ 429,523	\$ -	\$ 2,600	\$ -	\$ 33,771	\$ 107,350	\$ 178,425	\$ 22,082	\$ 182,684

YOUNG WOMEN'S LEADERSHIP ACADEMY

School:	Young Women's Leadership Acad
Original Year Built	1925
Capacity	656
Current Enrollment	404

COSTS BY SYSTEM BY YEAR

Young Women's Leadership Acad	2024	2025	2026	2027	2028	2029	2030	2031	2032	2033
Shell	\$ -	\$ -	\$ -	\$ -	\$ -	\$ 390,000	\$ 65,000	\$ -	\$ -	\$ -
Services - Mechanical	\$ -	\$ 20,150	\$ 360,750	\$ -	\$ -	\$ -	\$ 39,650	\$ -	\$ -	\$ -
Interiors	\$ -	\$ -	\$ -	\$ -	\$ -	\$ -	\$ -	\$ -	\$ 84,500	\$ 195,000
Services - Electrical	\$ -	\$ 1,745,297	\$ -	\$ -	\$ -	\$ -	\$ 77,875	\$ -	\$ -	\$ -
Equipment and Furnishings	\$ -	\$ -	\$ -	\$ -	\$ -	\$ -	\$ -	\$ -	\$ -	\$ -
Building Sitework	\$ -	\$ -	\$ 195,000	\$ 26,000	\$ -	\$ -	\$ -	\$ -	\$ -	\$ -
Substructure	\$ -	\$ -	\$ -	\$ -	\$ -	\$ -	\$ -	\$ -	\$ -	\$ -

COSTS BY PRIORITY BY YEAR

Young Women's Leadership Acad	2024	2025	2026	2027	2028	2029	2030	2031	2032	2033
High	\$ -	\$ 1,749,847	\$ 360,750	\$ -	\$ -	\$ -	\$ -	\$ -	\$ -	\$ -
Medium	\$ -	\$ 15,600	\$ 195,000	\$ 26,000	\$ -	\$ 390,000	\$ -	\$ -	\$ -	\$ -
Low	\$ -	\$ -	\$ -	\$ -	\$ -	\$ -	\$ 182,525	\$ -	\$ 84,500	\$ 195,000