

Instructional Data Warehouse News

September 26th, 2024

www.nassauboces.org/idw

Performance Level Change Reports Are Back! A key instructional analysis vehicle has returned to our toolkit.

by Fred Cohen

How do we know if our Grade 3-8 students are making adequate progress compared to their peers? This question is especially important in districts where there are high refusal rates, and we don't know if test takers are the same from one year to the next?

A number of years ago, the Instructional Data Warehouse (IDW) developed Performance Level Change Reports which measured the progress of students who took state assessments in two consecutive years, thus measuring individual student Performance Level progress from one year to the next. The following year, we refined these reports by breaking down progress within Performance Levels two, three, and four.

Called the "Half Level Change - This Year vs Last Year," the report is a powerful tool in determining whether a grade level is making progress when compared to similar students in Nassau County. On two recent occasions, we had to eliminate the report. First, the pandemic took away the 2020 and 2021 test years for all practical purposes, and then, in 2023, SED introduced the Next Generation Learning Standards, sharing 2023 results should not be compared to 2022. Now, we finally have two consecutive test years, 2023 and 2024, where progress can be measured.

The report can be found in your "Reports" folder in a separate folder called "Performance Level Comparison Reports." Choose the first option, "Half Level Change - This Year vs Last Year." Then, on the prompt page, select a state assessment from grade 4-8 and choose a district-wide or school option.

The full report is shown below, but each half of the report will be analyzed separately on the following pages. Note the circled link to the county benchmark.



Upcoming IDW Events

IDW Trainings:

ELL Navigation
9/25/24 9:00am

HS Navigation
10/2/24 9:00am

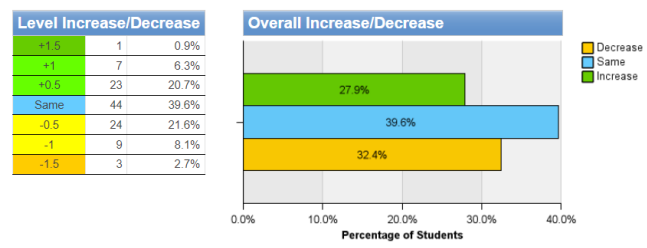
3-8 Navigation
10/10/24 9:00am

HS Guidance
Navigation
10/16/24 9:00am

Register on MLP

[Link to Nassau County Benchmark](#)

Count of Students		2022/2023							
		Grade 4 Math							
2023/2024	Grade 5 Math	Level 1	Level 2 L	Level 2H	Level 3 L	Level 3H	Level 4 L	Level 4H	Total
		19	2	4	2				27
		3	8	2	3	1			17
		2	8	5	5				27
		2	2	8	9	6	1		28
		1	1	3	4	2	1		13
				2			1	1	4
		27	22	20	25	11	4	2	111



Department of Curriculum, Instruction and Technology

Questions? Contact: Stephanie Witt, Supervisor II, Instructional Data Warehouse
Phone: 516-608-6623 • Email: switt1@nasboces.org

~ Proudly Serving the Nassau County School Community ~

This county benchmark will be the key to interpreting district results. Remember, only those students district-wide and County-wide who **took tests in both years** are included in the analysis.

Count of Students			2022/2023							
			Grade 4 Math							
			Level 1	Level 2 L	Level 2H	Level 3 L	Level 3H	Level 4 L	Level 4H	Total
2023/2024	Grade 5 Math	Level 1	19	7	4	2				32
		Level 2 L	6	6	2	3	1			18
		Level 2H	2	6	5	6				19
		Level 3 L	2	2	8	9	6	1		26
		Level 3H			1	3	4	2	1	12
		Level 4 L				2		1	1	4
		Total	27	22	20	25	11	4	2	111

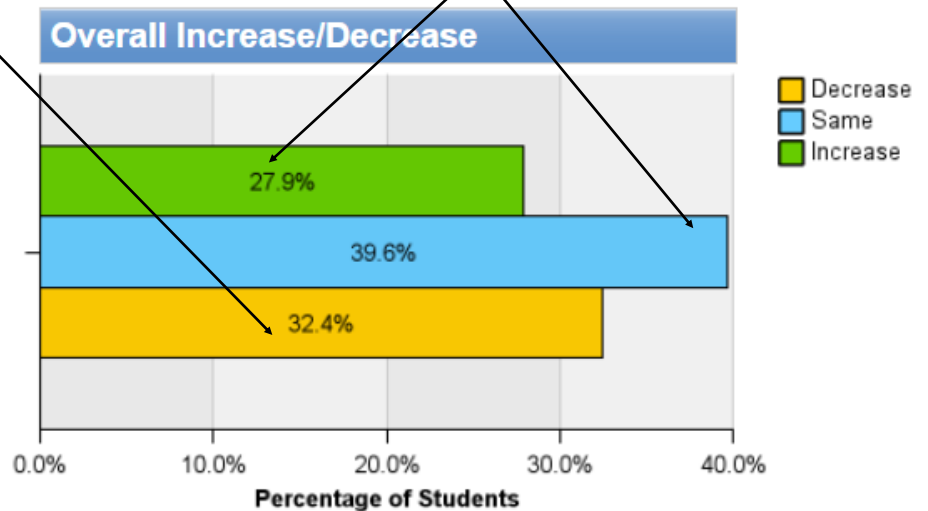
Read the table from top to bottom to find Performance Level scores for the **2023 Math 4 Assessment**. The total number of test takers who took both assessments is listed here.

Read across to find Performance Level scores for the **2024 Math 5 Assessment**. Note that scores written in **blue cells** are for the students who scored at the **same** Performance Level on each assessment. Scores in **yellow and orange cells** scored at a **lower** Performance Level in Grade 5, and scores in the **green cells** are for students who scored at a **higher** Performance Level on the 2024 Grade 5 Assessment. Click on the number in each cell to reveal the actual students and their scores on each test.

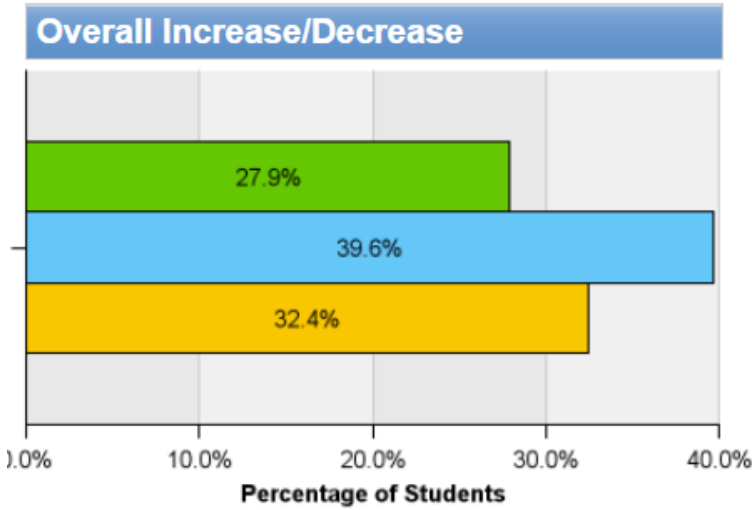
The key to assessing grade level performance and student growth is the **summary chart/table shown below**. The table on the left, "Level Increase/Decrease," shows the number and percentage of students who increased (or decreased) by a half, whole, or even 1.5 half levels. However, the Chart to the right, "**Overall Increase/Decrease**," is a key to interpreting growth relative to the county. The numbers tell us that 27.9% of students increased and 32.4% decreased a half level or more, and 39.6% remained at the same level.

As I often say, the county benchmark is like truth serum. As we will see on the following page, there were 9,572 students county-wide who took the same assessments. How did they do? Remember that Nassau County students are typically the highest scoring students in NY State. That comprises a formidable benchmark. Let's now compare district to county results on the next page.

Level Increase/Decrease		
+1.5	1	0.9%
+1	7	6.3%
+0.5	23	20.7%
Same	44	39.6%
-0.5	24	21.6%
-1	9	8.1%
-1.5	3	2.7%



District Results Chart



■ Decrease
■ Same
■ Increase

We can see that slightly **more students (32.4%) declined** a half level **than increased a half level (27.9%)**. Also, almost 40% remained at the same level. The way to interpret these changes is to see how everyone else did.

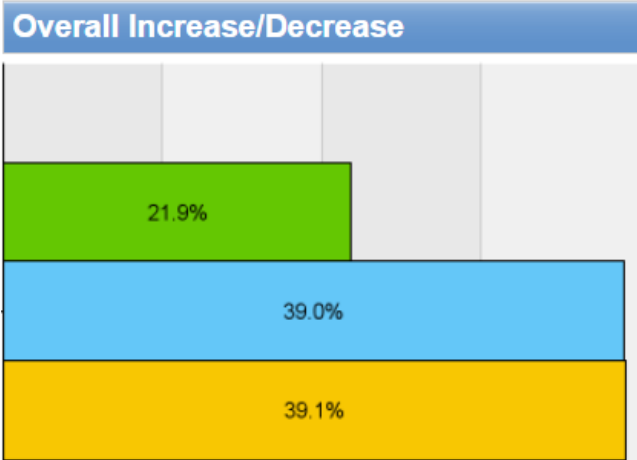
County-wide, were the results comparable or did the district actually “outgrow” the county?

Nassau County Results

Half Level Change-This Year vs Last Year (Nassau Totals)

Count of Students			2022/2023							Total
			Grade 4 Math							
2023/2024	Grade 5 Math		Level 1	Level 2 L	Level 2H	Level 3 L	Level 3H	Level 4 L	Level 4H	
5		Level 1	649	292	182	149	12	5	1,289	
		Level 2 L	102	192	195	243	46	3	782	
		Level 2H	63	171	239	469	129	23	1,099	
		Level 3 L	18	109	246	1,003	608	189	2,236	
		Level 3H	1	8	30	401	633	404	1,651	
		Level 4 L		2	8	121	502	600	1,784	
		Level 4H				10	86	217	418	731
Total			833	774	900	2,396	2,016	1,441	1,212	9,572

This table shows us how large the Nassau County benchmark is with 9,572 students actually sitting for both Math 4 and Math assessments.



■ Decrease
■ Same
■ Increase

And this Nassau County chart shows us that, overall, **more students county-wide declined (39.1% compared to only 32,4% in the district)**. Also, **fewer Nassau County students increased a half level or more (21.9% county-wide compared to 27.9% in the district)**. An equal number of students remained the same.



Department of Curriculum, Instruction and Technology

Questions? Contact: Stephanie Witt, Supervisor II, Instructional Data Warehouse
 Phone: 516-608-6623 • Email: switt1@nasboces.org

The astute IDW user can see that **growth results** can be quite different from **simple proficiency results which are** shown on the Snapshot report. A district, due to a high percentage of economically disadvantaged students perhaps, can have lower than average proficiency rates, but still show better than average growth rates. Some might argue, however, that lower performing students, due to regression to the mean, will typically show greater growth than higher performing students because there is more opportunity for growth. Unfortunately, that often does not occur either in my experience or as reported in many studies. The gap between the lowest performing districts and the highest performing districts actually grows the longer students are in school. Learning discrepancies are thus often greater in higher grades than in lower grades.

We hope the return of these Performance Level Change reports adds insight to the excellent analyses IDW users are currently enjoying.

As always, IDW personnel are available to provide telephone assistance as well as virtual and in-district training for any district seeking to learn more about this newsletter, or about other best data practices. To schedule a training session or ask any IDW-related questions, please call Stephanie Witt at (516) 608-6623, Fred Cohen at (516) 608-6640, Tammy Mazza at (516) 608-6633, or Dr. Wanda Toledo at (516) 608-6648.

**What's
New in
the IDW?**

- The full suite of Grade 3-8 and Regents Examination instructional reports are now available in the IDW.
- Don't forget to check out our IDW training schedule and /or request an in-district training visit for all staff members.