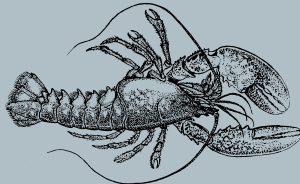




LUCHAL'S SOULFUL



**SEA
FOOD**

CULINARY
INTERNSHIP

THIS INTERNSHIP IS DESIGNED AS PART OF A REGIONAL, CULINARY YOUTH PRE-APPRENTICESHIP PROGRAM THROUGH PPBEA. STUDENTS WILL BE TASKED AND TRAINED IN ENTRY-LEVEL FOOD PREPARATION AND SERVICE, DUTIES AND RESPONSIBILITIES IN A COMMERCIAL ENVIRONMENT.

MONDAY - SATURDAY, 11AM - 9PM.
ACTUAL WORKING HOURS TO BE DETERMINED AFTER
INTERNSHIP PLACEMENT.

16 YEARS OR OLDER

60 HOUR COMMITMENT

**How to Create
an Account &
Instructions on
How to Apply
("locate student
internship"):**

<https://cclmarketplace.org/frequently-asked-questions>

**TALK TO YOUR
COUNSELOR TODAY**



MORE INFORMATION ON THIS OPPORTUNITY (ONCE YOU SIGN IN)
<https://cclmarketplace.org/marketplace/opportunities/detail/5315>

