

Project: **EAST CENTRAL HIGH SCHOOL CAFETERIA REMODEL**  
**12150 E 11TH**  
**TULSA, OK 74128**

Owner: **TULSA PUBLIC SCHOOLS**  
**3027 SOUTH HAVEN AVENUE**  
**TULSA, OK 74114**

Architect: KKT ARCHITECTS, INC.  
2200 S. UTICA PLACE, SUITE 200  
TULSA, OK 74114

## **ADDENDUM NO. 1**

**11/18/2024**

To: Prospective Bidders

This Addendum forms a part of the Contract Documents and modifies the original Bidding Documents, dated *October 18, 2024* as noted below. Acknowledge receipt of this Addendum in the space provided on the Bid Form. Failure to do so may subject Bidder to disqualification.

### **1.01 ATTACHMENTS**

- A.** This Addendum includes the following attached Documents and Specification Sections:
- I. Food Service Narrative, by Rocky Sturm (2 pages, dated 11/18/2024) **NEW**
  - II. MEP Narrative, by CEC (1 page, dated 11/18/2024) **NEW**

### **1.02 REVISIONS TO DRAWING SHEETS**

- A. SHEET AD101 – DEMOLITION PLAN – OVERALL** **REISSUED**
- 1. Revise keynotes 3, 4,5 and delete keynote 15.
  - 2. Change keynote 15 to 9 at sink next to office.
  - 3. Change keynote 3 to 2 at overhead door.
  - 4. Add new keynote 3 at stairs.
  - 5. Demo partial wall in kitchen
- B. SHEET A101 – FIRST FLOOR PLAN OVERALL** **REISSUED**
- 1. Add angular dimension and revise radius at curved bench.
  - 2. Change partition tag at FECs to A6
  - 3. Add dimension to room 103.
  - 4. Adjust column surrounds at opening to 110.



5. Delete keynote 1 &3 and add keynote 4.

- C. SHEET A102 – FIRST FLOOR PLAN – ENLARGED KITCHEN** **REISSUED**
1. Delete keynote 1 &3 and add keynote 4.
  2. Add detail marker J/A501
  3. Add detail markers K/A501
  4. Remove A3 partition type at low walls in serving 101.
  5. Remove sink in 112.
  6. Change partition tag at FECs to A6
- D. SHEET A111 – FIRST FLOOR PLAN – CEILING PLAN – OVERALL** **REISSUED**
1. Adjust lights at Soffit at opening to 110.
  2. Change ceiling type to ACT1 in 110
  3. Add keynote 2 in 100 & 107.
- E. SHEET A120 – FINISH PLAN** **REISSUED**
1. Note existing finishes in janitor and electrical room
  2. Delete transition at removed overhead door
  3. Revise ACT1 & ACT2 in legend
  4. Revise note 12 to clarify Stronghold liner used.
- F. SHEET A121 – FINISH FLOOR** **REISSUED**
1. Revised finish pattern
- G. SHEET A410 – INTERIOR ELEVATIONS** **REISSUED**
1. Elevation A give dimension of millwork
  2. Elevation B clarify finishes to match finish plan
  3. Elevation C clarify scope of bench
  4. Elevation D clarify scope of bench and match finishes to finish plan.
  5. Elevation E clarify finishes to match finish plan
- H. SHEET A411 – INTERIOR ELEVATIONS** **REISSUED**
1. Elevation C clarify finishes and scope of equipment is not OFOI.
- I. SHEET A501 – EXTERIOR AND INTERIOR DETAILS** **REISSUED**
2. Add Details J & K.
- J. SHEET A510 – RCP SOFFIT DETAILS** **REISSUED**
1. Revise Detail F
- K. SHEET A513 – MILLWORK DETAILS** **REISSUED**
1. Revise Detail A to include structural information.
- L. SHEET A602 – DOOR & WINDOW SCHEDULES AND TYPES**
1. Revise dimensions of overhead doors A110B & A110C.



### **1.03 CHANGES TO FOOD SERVICE ITEMS**

- A.** Refer to attached Addendum narrative, dated 11/18/2024.

### **1.04 CHANGES TO MECHANICAL ITEMS**

- A.** Refer to attached Addendum narrative, dated 11/18/2024.

### **1.05 CHANGES TO ELECTRICAL ITEMS**

- A.** Refer to attached Addendum narrative, dated 11/18/2024.

**END OF ADDENDUM NO. 1**



18 November 2024

Angela Sexton  
KKT Architecture, Inc.  
2200 South Utica Place, Suite 200  
Tulsa, Oklahoma 74114

Re: East Central High School

Dear Angela,

The following are items for Addendum #1.

**The following are clarifications to the items specified:**

**ITEM NO. 02 - CAN RACK - EXISTING**

**ITEM NO. 27 - MOBILE PASS-THRU HOT CABINET (2 REQUIRED)**

Continental Refrigerator model DL1WE-SS-PT-HD with all the standard features.

Accessories

- 2 ea. Hinge the doors per the drawings.
- 2 ea. 208 volts, single phase with a cord and plug.
- 2 lots Model 50-P008A-E universal type pan slides.
- 2 ea. Space all slides equally throughout the cabinets.
- 2 sets 5" polyurethane casters with brakes on all casters.

**ITEM NO. 28 - MOBILE PASS-THRU REFRIGERATOR (2 REQUIRED)**

Continental Refrigerator model D1RENSSPTHD with all the standard features.

Accessories

- 2 ea. Hinge the doors per the drawings.
- 2 ea. 120 volts, single phase with a cord and plug.
- 2 lots Model 50-P008A-E universal type pan slides.
- 2 ea. Space all slides equally throughout the cabinets.
- 2 sets 5" polyurethane casters with brakes on all casters.

**ITEM NO. 33 - MOBILE HOT CABINET (3 REQUIRED)**

Continental Refrigerator model DL1WE-SS-HD with all the standard features.

Accessories

- 3 ea. Hinge the doors per the drawings.
- 3 ea. 208 volts, single phase with a cord and plug.
- 3 lots Model 50-P008A-E universal type pan slides.
- 3 ea. Space all slides equally throughout the cabinets.
- 3 sets 5" polyurethane casters with brakes on all casters.

**ITEM NO. 34 - MOBILE REFRIGERATOR (3 REQUIRED)**

Continental Refrigerator model D1RESNSSHD with all the standard features.

Accessories

- 3 ea. Hinge the doors per the drawings.



3 ea.	120 volts, single phase with a cord and plug.
3 lots	Model 50-P008A-E universal type pan slides.
3 ea.	Space all slides equally throughout the cabinets.
3 sets	5" polyurethane casters with brakes on all casters.

**The following are changes to the drawings:**

Sheet FS301 - Changed the floor drains at the serving counters to floor sinks.

**The following items are acceptable as substitutions to the items specified:**

There none submitted or approved. The bid will be as specified.

Sincerely,

Rocky Sturm, CFSP





---

## REVISION SUMMARY – Addendum 01

---

**Project:** East Central High School  
**Project No.:** 240417  
**Revision Date:** November 18, 2024

This summary is provided for the sole purpose of assisting the project team in understanding the revisions to the Contract Documents made by CEC. In no way is this to be considered an exhaustive list. The contractor shall remain responsible for reviewing and conforming to the Contract Documents.

### **MODIFICATIONS TO DRAWINGS:**

#### **PLUMBING:**

##### **P-101 CAFETERIA PLUMBING PLAN**

1. An 8”X8” floor sink has been added to the plumbing fixture schedule (FS-2)
2. Electrical water cooler model has been updated.

##### **P-102 KITCHEN – DWV PLAN**

1. Previous floor drains serving from line have been changed for FS-2
2. Hand sink has been removed from the scope.
3. New detail #4 has been added.

##### **P-103 KITCHEN – DOMESTIC WATER & GAS PLAN**

1. Hand sink has been removed from the scope.

#### **ELECTRICAL:**

##### **E-003 ELECTRICAL SCHEDULES**

1. Removed Type M light fixture, added type EA.
2. Updated panel schedule for changes below.

##### **E-101 CAFETERIA – LIGHTING PLAN**

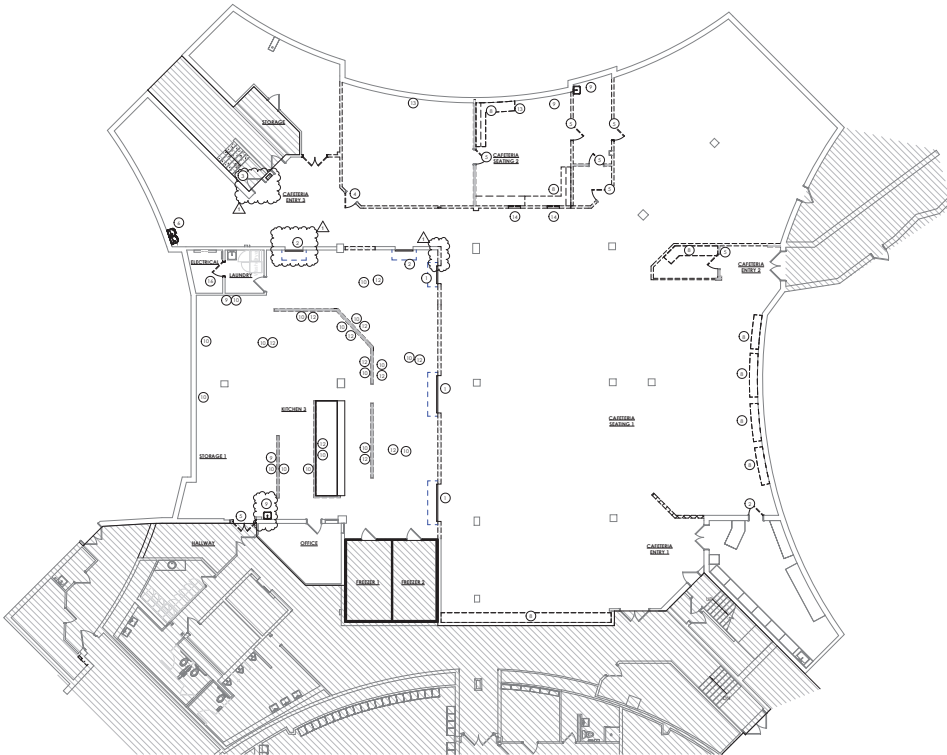
1. Added keynote 2 for tape lighting clarification.
2. Removed type M fixtures, added keynote to keep existing.
3. Added bug-eye fixtures in Elec and Laundry rooms.
4. Removed one can light from serving line.

##### **E-201 CAFETERIA – POWER PLAN**

1. Moved receptacles to furred out walls and away from furniture.
2. Removed power for TV above pickle bar.
3. Altered receptacle heights.
4. Removed power for Overhead doors.

END OF SUMMARY





DEMO FLOOR PLAN KEYNOTES

- EXISTING OVERHEAD DOOR AND FRAME TO BE REMOVED.
- EXISTING DOOR TO BE REMOVED.
- EXISTING WINDOW WITH OVERHEAD DOOR MATCH THE EXISTING WINDOW.
- EXISTING DOOR AND FRAME TO BE REMOVED. HANGING UP TO REUSE ONLY.
- EXISTING DOOR TO BE REMOVED. RETAIN FOR REUSE.
- EXISTING DOOR TO BE REMOVED.
- EXISTING OVERHEAD DOOR TO BE REMOVED.
- EXISTING SERVICE DOOR AND COUNTERTOP TO BE REMOVED.
- EXISTING MILLWORK AND ASSOCIATED PLUMBING INDICATED TO BE REMOVED.
- EXISTING SINK TO BE REMOVED.
- EXISTING SINK EQUIPMENT INCLUDING STAINLESS STEEL SINKS, TO BE REMOVED AND REMAINS OF PIPING.
- EXISTING FLOOR DRAIN TO BE REMOVED. COORDINATE WITH PLUMBING, TYPICAL.
- EXISTING CONCRETE CURB UNDER KITCHEN EQUIPMENT TO BE REMOVED.
- REMOVE PARTIAL WALL FURR OUT.
- REMOVE DOOR AND FRAME.
- EXISTING DOOR TO BE REMOVED THEN REINSTALLED WITH SUPPORT BRACE.
- CAP PLUMBING AND POWER AT REMOVED FEATURES AND EQUIPMENT.

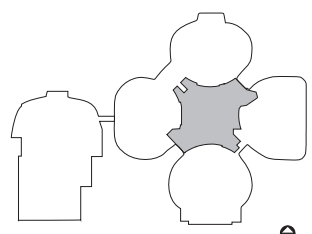
DEMO PLAN LEGEND

- EXISTING WALLS TO BE DEMOLISHED
- EXISTING CHAIR WALLS TO BE DEMOLISHED
- EXISTING WALLS TO REMAIN
- EXISTING DOOR TO BE DEMOLISHED
- EXISTING DOOR TO REMAIN
- EXISTING DOOR OVERHEAD ROLLING TO BE DEMOLISHED
- EXISTING DOOR OVERHEAD ROLLING TO REMAIN
- EXISTING WINDOW TO BE DEMOLISHED
- EXISTING WINDOW TO REMAIN
- KEYNOTE
- AREA NOT IN SCOPE

DEMO GENERAL NOTES:

- REMOVE ALL FLOORING AND WALL BASE IN AREA OF WORK.
- REMOVE ALL WALL MOUNTED SCHEDULE, ACCESSORIES AND WIRE MOLDS IN AREA OF WORK.
- REMOVE ALL REPT PARTITION, WALL PROTECTION AND WALL BASE IN AREA OF WORK.
- REMOVE CLOSETS, TELEPHONE AND WALL MOUNTED EQUIPMENT IN AREA OF WORK AND RETURN TO OWNER.
- REMOVE ALL SIGNAGE IN AREA OF WORK AND RETURN TO OWNER.
- DAMAGE AND LATE TAKEN FROM DEMOLISHED WALLS AND STORE FOR LATER USE.

A DEMOLITION PLAN - OVERALL  
SCALE 1/8" = 1'-0"



KKT ARCHITECTS, INC.  
3000 SOUTH VICKI PLACE, SUITE 200  
TULSA, OKLAHOMA 74114  
PHONE: 918.425.1100 FAX: 918.425.1101  
WWW.KKTARCHITECTS.COM  
CERTIFICATE OF AUTHORIZATION

EAST CENTRAL HIGH SCHOOL CAFETERIA REMODEL

TULSA PUBLIC SCHOOLS

12150 E 11TH ST.  
TULSA, OK  
74128



REV.	DATE	#	DESCRIPTION
10-18-2024		1	CONSTR. DOCUMENTS
11-18-2024		2	ADD #1
		3	
		4	
		5	
		6	
		7	
		8	
		9	
		10	

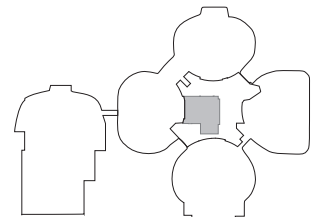
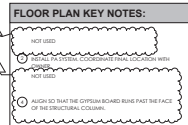
DEMOLITION PLAN - OVERALL

AD101

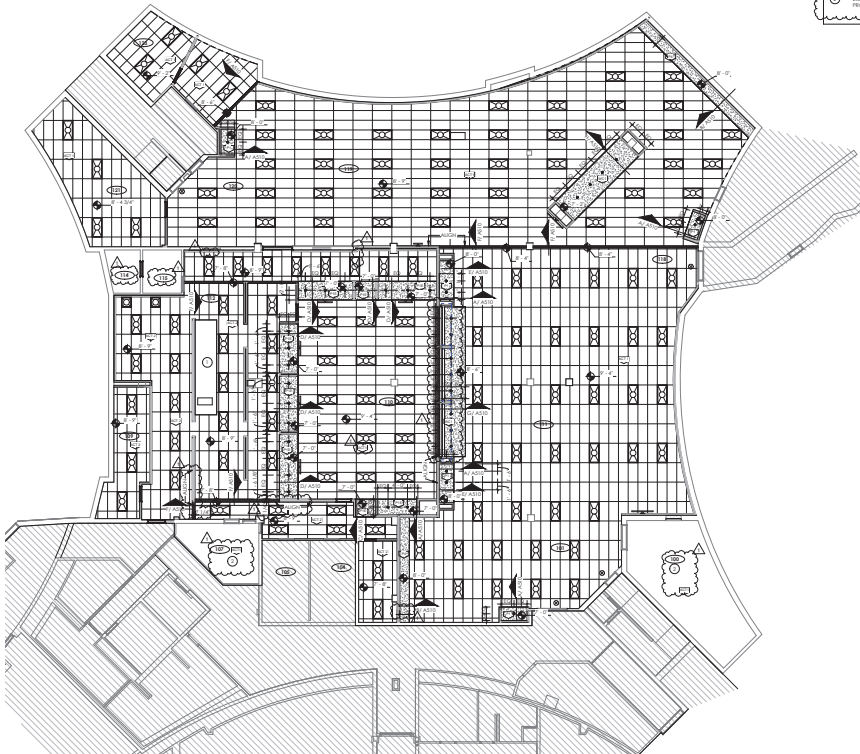












A FIRST FLOOR REFLECTED CEILING PLAN - OVERALL

- GENERAL NOTES**
1. SUSPENDED GYPSUM BOARD CEILING TO BE SUPPLIED BY THE CONTRACTOR. GYPSUM BOARD SHALL BE 5/8" THICK, TYPE X, 4'x8' PANELS. GYPSUM BOARD SHALL BE 5/8" THICK, TYPE X, 4'x8' PANELS. GYPSUM BOARD SHALL BE 5/8" THICK, TYPE X, 4'x8' PANELS.
  2. THE LOCATION OF ANY CEILING ACCESS PANELS REQUIRED IN GYPSUM BOARD CEILING SHALL BE COORDINATED WITH THE ARCHITECT. ALL PANELS SHALL BE FINISHED TO MATCH SURROUNDING CEILING.
  3. CEILING UNIFORM SPRINKLER HEADS, SPACERS, EXT. DOWNGATE, ETC. ARE TO BE COORDINATED WITH THE ARCHITECT. UNIFORM SPRINKLER HEADS, SPACERS, EXT. DOWNGATE, ETC. ARE TO BE COORDINATED WITH THE ARCHITECT. UNIFORM SPRINKLER HEADS, SPACERS, EXT. DOWNGATE, ETC. ARE TO BE COORDINATED WITH THE ARCHITECT.
  4. SUSPENDED OR SURFACE MOUNTED LIGHT FIXTURES TO BE COORDINATED WITH THE ARCHITECT.
  5. GYPSUM BOARD CEILING TO BE FINISHED WITH 1/2" JACOBI ROUGH/SMOOTH.
  6. PROVIDE SCHEDULE 40 STEEL GYPSUM BOARD CEILING HANGERS AT ALL JOINTS.
  7. ALL EXPOSED STEEL STRUCTURAL ELEMENTS, BRACKETS, COUPLERS, SPACING, SUPPORTS TO BE FINISHED WITH PAINTED STEEL.
  8. EXPOSED UNIFORM SPRINKLER HEADS TO BE FINISHED WITH PAINTED STEEL.
  9. NO CEILING TIE TO BE LESS THAN 1/2" IN DIAMETER. CEILING TIE TO BE FINISHED TO MATCH CEILING FINISH.
  10. ALL SPRINKLER HEADS TO BE FINISHED TO MATCH CEILING FINISH.

- KEY NOTES**
- 1. SEE GENERAL NOTES FOR REMOVAL OF EXISTING CEILING. PROVIDE NEW CEILING TO MATCH FINISH.

**RCP LEGEND**

	NEW ACOUSTIC CEILING TILE (2' x 4')
	EXISTING GYPSUM BOARD CEILING
	NEW GYPSUM BOARD CEILING
	OUT OF SCOPE
	DRY LIGHT
	NEW RECREATIONAL LIGHT
	CEILING FINISH REFERENCE SCHEDULE FOR FINISHES



KKT ARCHITECTS, INC.  
1000 SOUTH VICKI PLACE, SUITE 200  
TULSA, OKLAHOMA 74114  
PHONE: (918) 435-1100, FAX: (918) 435-1101  
WWW.KKTARCHITECTS.COM  
CERTIFICATE OF AUTHORIZATION

## EAST CENTRAL HIGH SCHOOL CAFETERIA REMODEL

TULSA PUBLIC SCHOOLS

12150 E 11TH ST.  
TULSA, OK  
74128



REV.	DATE	DESCRIPTION
10-18-2024	10-18-2024	CONST. DOCUMENTS
11-18-2024	11-18-2024	ADD #1

FIRST FLOOR REFLECTED CEILING PLAN - OVERALL

A111



# FINISH PLAN LEGEND:

FINISH	WALL PROTECTION	FLOOR BASE	WALL	CEILING	DOOR	WALL	CEILING	WALL	CEILING
F1	SHOWN RELATIVE COLOR: FIVE WHITE FINISH: FIVE FINISH: FIVE	W1	WOLF CORON COLOR: CORON COLOR: CORON	B1	BOTTLE WOLF CORON COLOR: CORON	L1	LAMBERT COLOR: CORON COLOR: CORON	T1	TARGET COLOR: CORON COLOR: CORON
F1E	SHOWN RELATIVE COLOR: FIVE WHITE FINISH: FIVE FINISH: FIVE	W1E	WOLF CORON COLOR: CORON COLOR: CORON	B1E	BOTTLE WOLF CORON COLOR: CORON	L1E	LAMBERT COLOR: CORON COLOR: CORON	T1E	TARGET COLOR: CORON COLOR: CORON
F2	SHOWN RELATIVE COLOR: CORON FINISH: FIVE FINISH: FIVE	W2	WOLF CORON COLOR: CORON COLOR: CORON	B2	BOTTLE WOLF CORON COLOR: CORON	L2	LAMBERT COLOR: CORON COLOR: CORON	T2	TARGET COLOR: CORON COLOR: CORON
F3	SHOWN RELATIVE COLOR: CORON FINISH: FIVE FINISH: FIVE	W3	WOLF CORON COLOR: CORON COLOR: CORON	B3	BOTTLE WOLF CORON COLOR: CORON	L3	LAMBERT COLOR: CORON COLOR: CORON	T3	TARGET COLOR: CORON COLOR: CORON
F4	SHOWN RELATIVE COLOR: CORON FINISH: FIVE FINISH: FIVE	W4	WOLF CORON COLOR: CORON COLOR: CORON	B4	BOTTLE WOLF CORON COLOR: CORON	L4	LAMBERT COLOR: CORON COLOR: CORON	T4	TARGET COLOR: CORON COLOR: CORON

# FINISH NOTES:

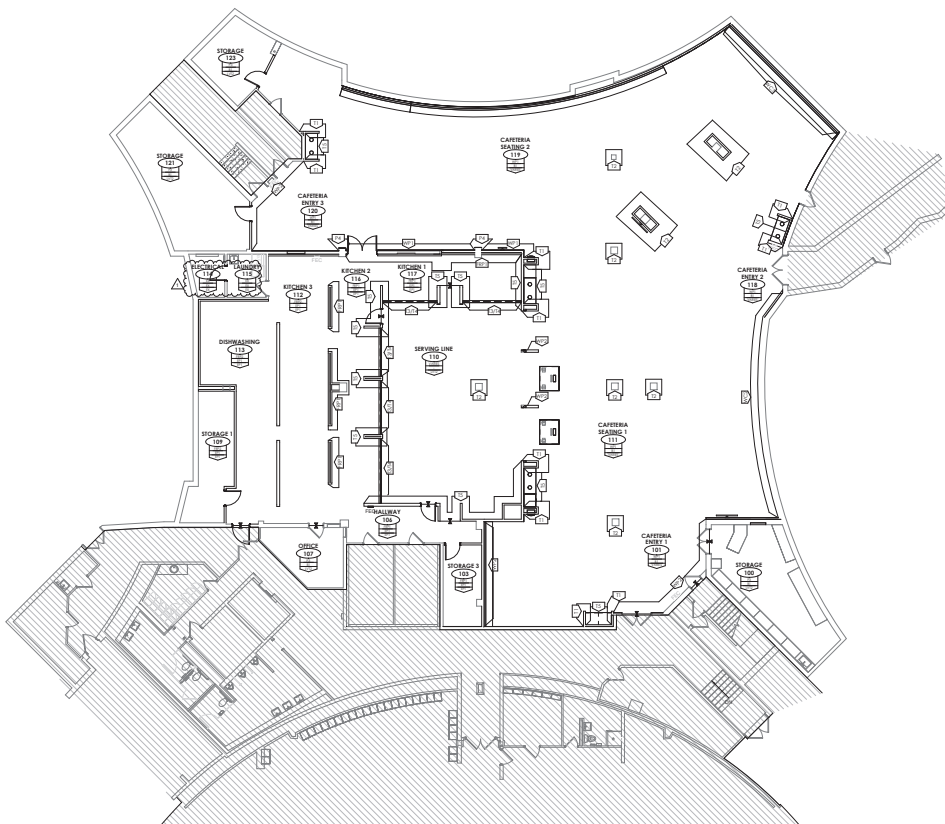
- SUBMIT FINISH SAMPLES TO ARCHITECT FOR APPROVAL.
- REMOVE EXISTING FINISHES AND REPAIRS TO BE MADE BY CONTRACTOR. FINISHES SHALL BE INSTALLED TO MATCH EXISTING FINISHES.
- IN AREAS WITH MILLWORK, THE FLOORING SHALL BE INSTALLED TO MATCH EXISTING FINISHES.
- REFERENCE EXISTING ELEVATION SHEETS (A111 AND A112) FOR LOCATION OF MILLWORK FINISHES. MILLWORK FINISHES SHALL BE INSTALLED TO MATCH EXISTING FINISHES.
- FOR AREAS THAT ARE MORE THAN ONE MATERIAL OR FINISH, THE FINISHES SHALL BE INSTALLED TO MATCH EXISTING FINISHES.
- REFERENCE EXISTING ELEVATION SHEETS (A111 AND A112) FOR LOCATION OF MILLWORK FINISHES. MILLWORK FINISHES SHALL BE INSTALLED TO MATCH EXISTING FINISHES.
- FOR AREAS THAT ARE MORE THAN ONE MATERIAL OR FINISH, THE FINISHES SHALL BE INSTALLED TO MATCH EXISTING FINISHES.
- REFERENCE EXISTING ELEVATION SHEETS (A111 AND A112) FOR LOCATION OF MILLWORK FINISHES. MILLWORK FINISHES SHALL BE INSTALLED TO MATCH EXISTING FINISHES.
- FOR AREAS THAT ARE MORE THAN ONE MATERIAL OR FINISH, THE FINISHES SHALL BE INSTALLED TO MATCH EXISTING FINISHES.
- REFERENCE EXISTING ELEVATION SHEETS (A111 AND A112) FOR LOCATION OF MILLWORK FINISHES. MILLWORK FINISHES SHALL BE INSTALLED TO MATCH EXISTING FINISHES.
- FOR AREAS THAT ARE MORE THAN ONE MATERIAL OR FINISH, THE FINISHES SHALL BE INSTALLED TO MATCH EXISTING FINISHES.
- REFERENCE EXISTING ELEVATION SHEETS (A111 AND A112) FOR LOCATION OF MILLWORK FINISHES. MILLWORK FINISHES SHALL BE INSTALLED TO MATCH EXISTING FINISHES.
- FOR AREAS THAT ARE MORE THAN ONE MATERIAL OR FINISH, THE FINISHES SHALL BE INSTALLED TO MATCH EXISTING FINISHES.
- REFERENCE EXISTING ELEVATION SHEETS (A111 AND A112) FOR LOCATION OF MILLWORK FINISHES. MILLWORK FINISHES SHALL BE INSTALLED TO MATCH EXISTING FINISHES.
- FOR AREAS THAT ARE MORE THAN ONE MATERIAL OR FINISH, THE FINISHES SHALL BE INSTALLED TO MATCH EXISTING FINISHES.

# SYMBOLS:

SYMBOL	DESCRIPTION
[Symbol]	ROOM FINISH TAG
[Symbol]	CHANGE IN FINISH
[Symbol]	FLOORING DIRECTION
[Symbol]	CHANGE IN FLOOR FINISH WHICH REQUIRES TRANSITION TO EXISTING FLOOR
[Symbol]	EXISTING FINISH TO REMAIN

# TRANSITION LEGEND:

- THE FINISHES OF THE EXISTING FLOOR SHALL BE INSTALLED TO MATCH EXISTING FINISHES.
- THE FINISHES OF THE EXISTING FLOOR SHALL BE INSTALLED TO MATCH EXISTING FINISHES.
- THE FINISHES OF THE EXISTING FLOOR SHALL BE INSTALLED TO MATCH EXISTING FINISHES.
- THE FINISHES OF THE EXISTING FLOOR SHALL BE INSTALLED TO MATCH EXISTING FINISHES.
- THE FINISHES OF THE EXISTING FLOOR SHALL BE INSTALLED TO MATCH EXISTING FINISHES.
- THE FINISHES OF THE EXISTING FLOOR SHALL BE INSTALLED TO MATCH EXISTING FINISHES.
- THE FINISHES OF THE EXISTING FLOOR SHALL BE INSTALLED TO MATCH EXISTING FINISHES.
- THE FINISHES OF THE EXISTING FLOOR SHALL BE INSTALLED TO MATCH EXISTING FINISHES.
- THE FINISHES OF THE EXISTING FLOOR SHALL BE INSTALLED TO MATCH EXISTING FINISHES.
- THE FINISHES OF THE EXISTING FLOOR SHALL BE INSTALLED TO MATCH EXISTING FINISHES.
- THE FINISHES OF THE EXISTING FLOOR SHALL BE INSTALLED TO MATCH EXISTING FINISHES.
- THE FINISHES OF THE EXISTING FLOOR SHALL BE INSTALLED TO MATCH EXISTING FINISHES.
- THE FINISHES OF THE EXISTING FLOOR SHALL BE INSTALLED TO MATCH EXISTING FINISHES.
- THE FINISHES OF THE EXISTING FLOOR SHALL BE INSTALLED TO MATCH EXISTING FINISHES.
- THE FINISHES OF THE EXISTING FLOOR SHALL BE INSTALLED TO MATCH EXISTING FINISHES.



A FINISH PLAN OVERALL



KKT ARCHITECTS, INC.  
12150 E 11TH ST, SUITE 100  
TULSA, OK 74128  
TEL: 918.438.1111  
WWW.KKTARCHITECTS.COM

# EAST CENTRAL HIGH SCHOOL CAFETERIA REMODEL

TULSA PUBLIC SCHOOLS

12150 E 11TH ST.  
TULSA, OK  
74128



REV	DATE	DESCRIPTION
1	10-18-2024	CONSTR.
2	11-18-2024	ADD #1
3		
4		
5		
6		
7		
8		
9		
10		

FINISH PLAN

A120



3. REFER TO FLOOR PATTERN FINISH PLAN FOR DIMENSIONS TO LOCATE START AND FINISH OF MIXED PATTERN AND PERCENTAGES FOR COLOR MIX.



TULSA PUBLIC  
SCHOOLS

12150 E 11TH ST,  
TULSA, OK  
74128

[illegible]

FINISH FLOOR

**A121**



**EAST  
CENTRAL  
HIGH  
SCHOOL  
CAFETERIA  
REMODEL**

TULSA PUBLIC  
SCHOOLS

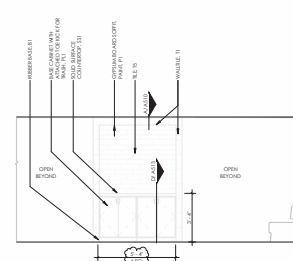
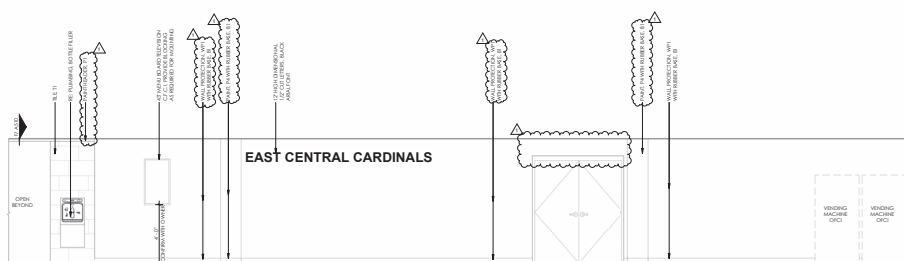
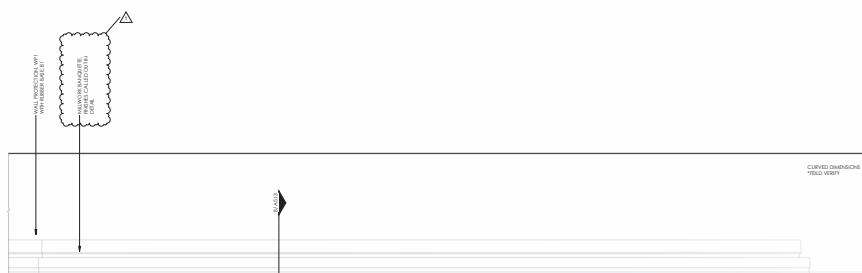
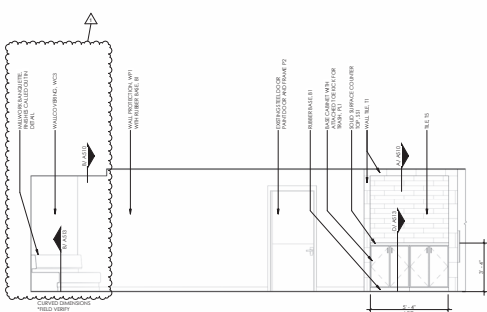
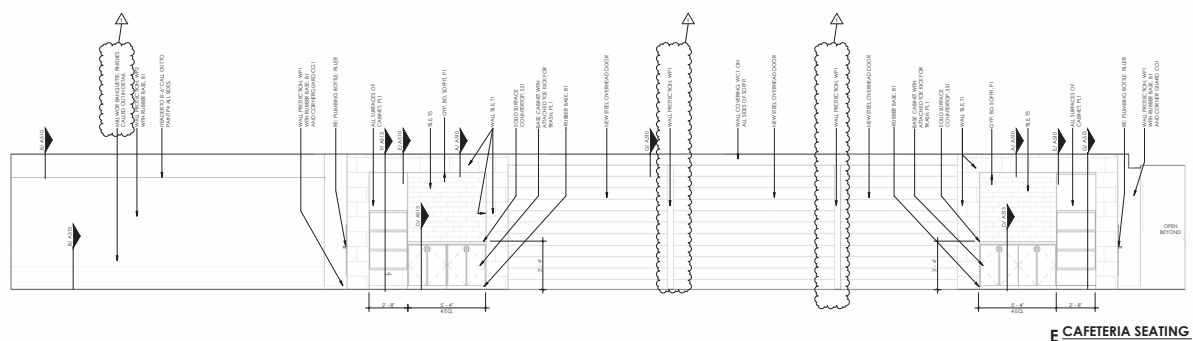
12150 E 11TH ST.  
TULSA, OK  
74128



REV.	DATE	DESCRIPTION
10-18-2024	CONCL.	
11-18-2024	DOCUMENTS	
	ADD #1	

INTERIOR ELEVATIONS

**A410**

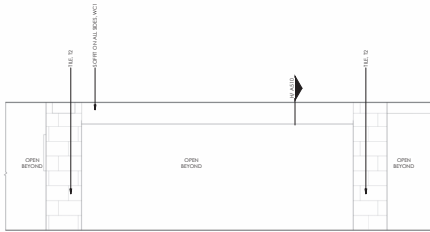


EAST CENTRAL CARDINALS

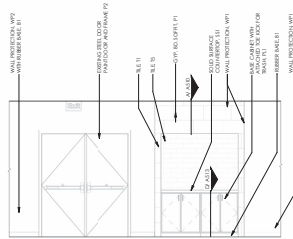
VENUE  
MACHINE  
OPEN

VENUE  
MACHINE  
OPEN

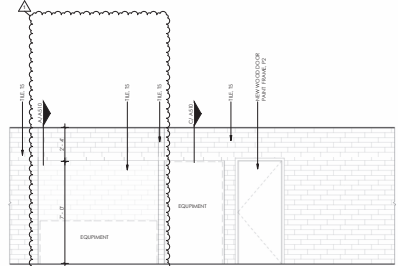




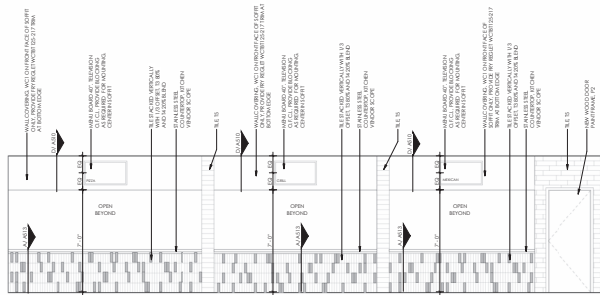
**E Double Wrapped Columns Elevation**  
SCALE: 3/8" = 1'-0"



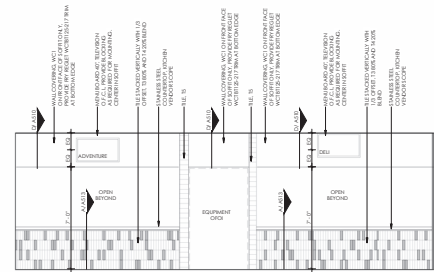
**D CAFETERIA SEATING 7**  
SCALE: 3/8" = 1'-0"



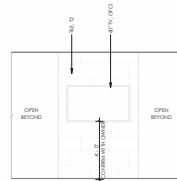
**C SERVING AREA 3**  
SCALE: 3/8" = 1'-0"



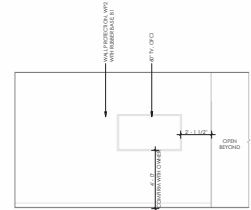
**B SERVING AREA 2**  
SCALE: 3/8" = 1'-0"



**A SERVING AREA 1**  
SCALE: 3/8" = 1'-0"



**G TV COLUMN**  
SCALE: 3/8" = 1'-0"



**F CAFETERIA SEATING 8**  
SCALE: 3/8" = 1'-0"



KKT ARCHITECTS, INC.  
1000 SOUTH AVENUE, SUITE 200  
TULSA, OKLAHOMA 74114  
PHONE: 918.425.1100 FAX: 918.425.1101  
WWW.KKTARCHITECTS.COM  
CERTIFICATE OF AUTHORIZATION

## EAST CENTRAL HIGH SCHOOL CAFETERIA REMODEL

TULSA PUBLIC  
SCHOOLS

12150 E 11TH ST.  
TULSA, OK  
74128

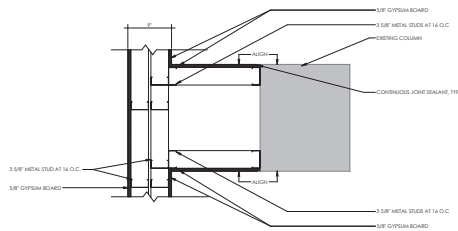
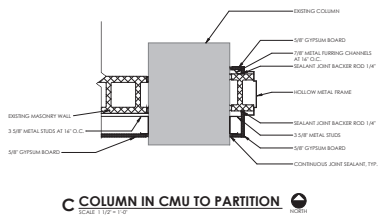
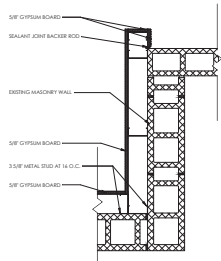
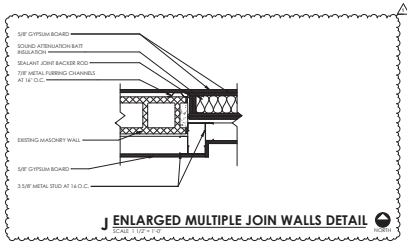


REV.	DATE	DESCRIPTION	CONTR.
10-18-2024	ADD #1		
11-18-2024	ADD #1		

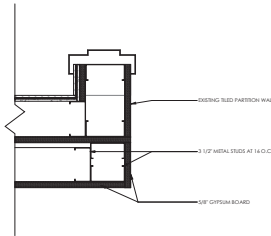
INTERIOR ELEVATIONS

**A411**

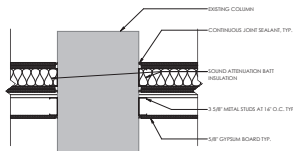




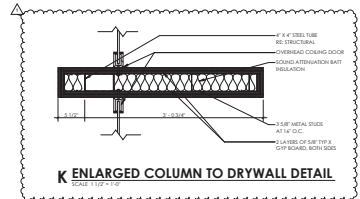
**H COLUMN TO FURRING PARTITIONS**  
SCALE 1/12" = 1'-0"



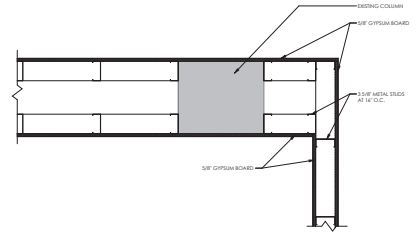
**E DOOR TO FURRING PARTITION**  
SCALE 3/4" = 1'-0"



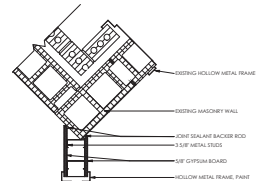
**B PART.-COL.-PART. DETAIL**  
SCALE 1/12" = 1'-0"



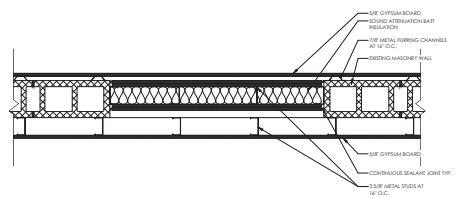
**K ENLARGED COLUMN TO DRYWALL DETAIL**  
SCALE 1/12" = 1'-0"



**G WRAPPED COLUMN DETAIL**  
SCALE 1/12" = 1'-0"



**D DIAGONAL DOOR TO PARTITION**  
SCALE 1/12" = 1'-0"



**A CMU WALL INFILL DETAIL**  
SCALE 1/12" = 1'-0"



**KKT ARCHITECTS, INC.**  
3000 SOUTH VICKI PLACE, SUITE 200  
TULSA, OKLAHOMA 74114  
PHONE: (918) 405-1100 FAX: (918) 405-1101  
WWW.KKTARCHITECTS.COM  
CERTIFICATED BY ARCHITECTURE

## EAST CENTRAL HIGH SCHOOL CAFETERIA REMODEL

TULSA PUBLIC SCHOOLS

12150 E 11TH ST.  
TULSA, OK  
74128

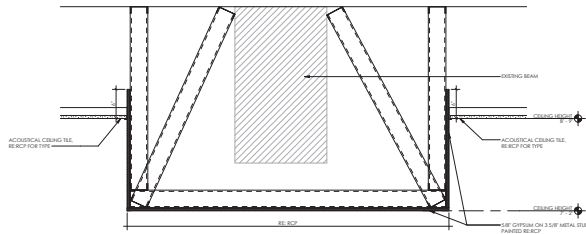


REV.	DATE	DESCRIPTION	CONTR.
10-18-2024	ADD #1	CONTR.	
11-18-2024	ADD #1	DOCUMENTS	

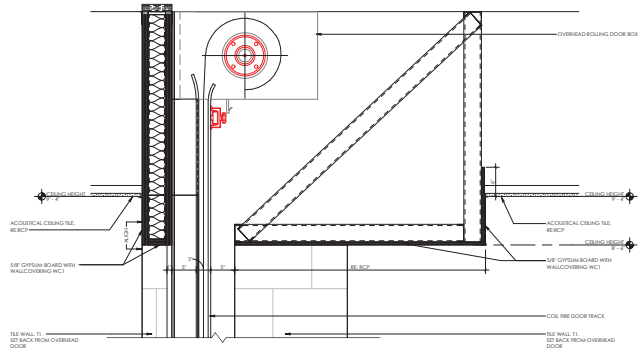
EXTERIOR AND INTERIOR DETAILS

**A501**

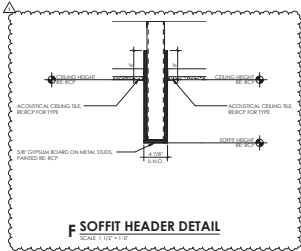




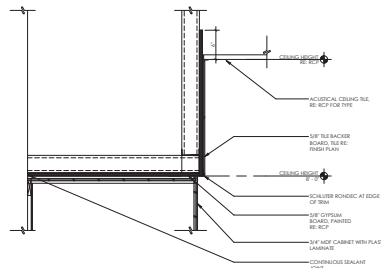
**H SOFFIT DETAIL AT BEAM**  
SCALE: 1/8" = 1'-0"



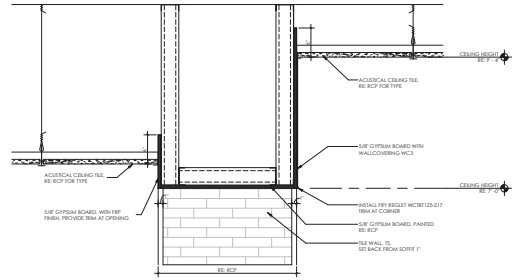
**G SOFFIT DETAIL AT SERVING LINE ENTRANCE**  
SCALE: 1/8" = 1'-0"



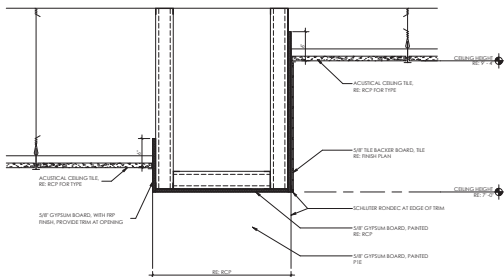
**F SOFFIT HEADER DETAIL**  
SCALE: 1/8" = 1'-0"



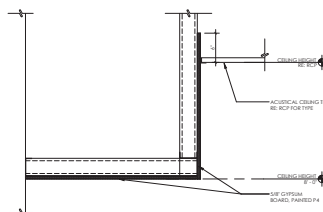
**E SOFFIT DETAIL AT MILLWORK**  
SCALE: 1/8" = 1'-0"



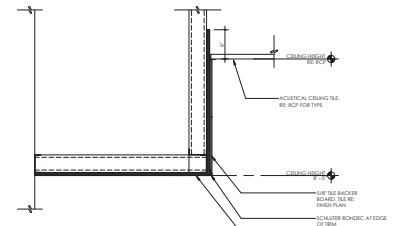
**D SOFFIT DETAIL AT SERVING WEST**  
SCALE: 1/8" = 1'-0"



**C SOFFIT DETAIL AT SERVING**  
SCALE: 1/8" = 1'-0"



**B SOFFIT DETAIL AT CAFETERIA SEATING**  
SCALE: 1/8" = 1'-0"



**A SOFFIT DETAIL AT TRASH RECEPTILES**  
SCALE: 1/8" = 1'-0"





**EAST  
CENTRAL  
HIGH  
SCHOOL  
CAFETERIA  
REMODEL**

TULSA PUBLIC  
SCHOOLS

12150 E 11TH ST,  
TULSA, OK  
74128

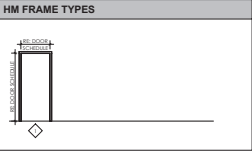
[illegible]

MILLWORK DETAILS

**A513**



DOOR #	ASSEMBLY RATING	DOOR SIZE	DOOR		FRAME		DETAIL			REMARKS
			MATERIAL	FINISH	MATERIAL	FINISH	HEAD	JAMB	GLASS	
100	1	2'-0" x 7'-0"	1	WFL	FACE SCEN	1	SSS	PAINT	BLINDS	ALUMIN
101	1	2'-0" x 7'-0"	1	WFL	FACE SCEN	1	SSS	PAINT	BLINDS	ALUMIN
102	1	2'-0" x 7'-0"	1	WFL	FACE SCEN	1	SSS	PAINT	BLINDS	ALUMIN
103	1	2'-0" x 7'-0"	1	WFL	FACE SCEN	1	SSS	PAINT	BLINDS	ALUMIN
104	1	2'-0" x 7'-0"	1	WFL	FACE SCEN	1	SSS	PAINT	BLINDS	ALUMIN
105	1	2'-0" x 7'-0"	1	WFL	FACE SCEN	1	SSS	PAINT	BLINDS	ALUMIN
106	1	2'-0" x 7'-0"	1	WFL	FACE SCEN	1	SSS	PAINT	BLINDS	ALUMIN
107	1	2'-0" x 7'-0"	1	WFL	FACE SCEN	1	SSS	PAINT	BLINDS	ALUMIN
108	1	2'-0" x 7'-0"	1	WFL	FACE SCEN	1	SSS	PAINT	BLINDS	ALUMIN
109	1	2'-0" x 7'-0"	1	WFL	FACE SCEN	1	SSS	PAINT	BLINDS	ALUMIN
110	1	2'-0" x 7'-0"	1	WFL	FACE SCEN	1	SSS	PAINT	BLINDS	ALUMIN
111	1	2'-0" x 7'-0"	1	WFL	FACE SCEN	1	SSS	PAINT	BLINDS	ALUMIN
112	1	2'-0" x 7'-0"	1	WFL	FACE SCEN	1	SSS	PAINT	BLINDS	ALUMIN
113	1	2'-0" x 7'-0"	1	WFL	FACE SCEN	1	SSS	PAINT	BLINDS	ALUMIN
114	1	2'-0" x 7'-0"	1	WFL	FACE SCEN	1	SSS	PAINT	BLINDS	ALUMIN
115	1	2'-0" x 7'-0"	1	WFL	FACE SCEN	1	SSS	PAINT	BLINDS	ALUMIN
116	1	2'-0" x 7'-0"	1	WFL	FACE SCEN	1	SSS	PAINT	BLINDS	ALUMIN
117	1	2'-0" x 7'-0"	1	WFL	FACE SCEN	1	SSS	PAINT	BLINDS	ALUMIN
118	1	2'-0" x 7'-0"	1	WFL	FACE SCEN	1	SSS	PAINT	BLINDS	ALUMIN
119	1	2'-0" x 7'-0"	1	WFL	FACE SCEN	1	SSS	PAINT	BLINDS	ALUMIN
120	1	2'-0" x 7'-0"	1	WFL	FACE SCEN	1	SSS	PAINT	BLINDS	ALUMIN
121	1	2'-0" x 7'-0"	1	WFL	FACE SCEN	1	SSS	PAINT	BLINDS	ALUMIN
122	1	2'-0" x 7'-0"	1	WFL	FACE SCEN	1	SSS	PAINT	BLINDS	ALUMIN
123	1	2'-0" x 7'-0"	1	WFL	FACE SCEN	1	SSS	PAINT	BLINDS	ALUMIN
124	1	2'-0" x 7'-0"	1	WFL	FACE SCEN	1	SSS	PAINT	BLINDS	ALUMIN
125	1	2'-0" x 7'-0"	1	WFL	FACE SCEN	1	SSS	PAINT	BLINDS	ALUMIN
126	1	2'-0" x 7'-0"	1	WFL	FACE SCEN	1	SSS	PAINT	BLINDS	ALUMIN
127	1	2'-0" x 7'-0"	1	WFL	FACE SCEN	1	SSS	PAINT	BLINDS	ALUMIN
128	1	2'-0" x 7'-0"	1	WFL	FACE SCEN	1	SSS	PAINT	BLINDS	ALUMIN
129	1	2'-0" x 7'-0"	1	WFL	FACE SCEN	1	SSS	PAINT	BLINDS	ALUMIN
130	1	2'-0" x 7'-0"	1	WFL	FACE SCEN	1	SSS	PAINT	BLINDS	ALUMIN
131	1	2'-0" x 7'-0"	1	WFL	FACE SCEN	1	SSS	PAINT	BLINDS	ALUMIN
132	1	2'-0" x 7'-0"	1	WFL	FACE SCEN	1	SSS	PAINT	BLINDS	ALUMIN
133	1	2'-0" x 7'-0"	1	WFL	FACE SCEN	1	SSS	PAINT	BLINDS	ALUMIN
134	1	2'-0" x 7'-0"	1	WFL	FACE SCEN	1	SSS	PAINT	BLINDS	ALUMIN
135	1	2'-0" x 7'-0"	1	WFL	FACE SCEN	1	SSS	PAINT	BLINDS	ALUMIN
136	1	2'-0" x 7'-0"	1	WFL	FACE SCEN	1	SSS	PAINT	BLINDS	ALUMIN
137	1	2'-0" x 7'-0"	1	WFL	FACE SCEN	1	SSS	PAINT	BLINDS	ALUMIN
138	1	2'-0" x 7'-0"	1	WFL	FACE SCEN	1	SSS	PAINT	BLINDS	ALUMIN
139	1	2'-0" x 7'-0"	1	WFL	FACE SCEN	1	SSS	PAINT	BLINDS	ALUMIN
140	1	2'-0" x 7'-0"	1	WFL	FACE SCEN	1	SSS	PAINT	BLINDS	ALUMIN
141	1	2'-0" x 7'-0"	1	WFL	FACE SCEN	1	SSS	PAINT	BLINDS	ALUMIN
142	1	2'-0" x 7'-0"	1	WFL	FACE SCEN	1	SSS	PAINT	BLINDS	ALUMIN
143	1	2'-0" x 7'-0"	1	WFL	FACE SCEN	1	SSS	PAINT	BLINDS	ALUMIN
144	1	2'-0" x 7'-0"	1	WFL	FACE SCEN	1	SSS	PAINT	BLINDS	ALUMIN
145	1	2'-0" x 7'-0"	1	WFL	FACE SCEN	1	SSS	PAINT	BLINDS	ALUMIN
146	1	2'-0" x 7'-0"	1	WFL	FACE SCEN	1	SSS	PAINT	BLINDS	ALUMIN
147	1	2'-0" x 7'-0"	1	WFL	FACE SCEN	1	SSS	PAINT	BLINDS	ALUMIN
148	1	2'-0" x 7'-0"	1	WFL	FACE SCEN	1	SSS	PAINT	BLINDS	ALUMIN
149	1	2'-0" x 7'-0"	1	WFL	FACE SCEN	1	SSS	PAINT	BLINDS	ALUMIN
150	1	2'-0" x 7'-0"	1	WFL	FACE SCEN	1	SSS	PAINT	BLINDS	ALUMIN
151	1	2'-0" x 7'-0"	1	WFL	FACE SCEN	1	SSS	PAINT	BLINDS	ALUMIN
152	1	2'-0" x 7'-0"	1	WFL	FACE SCEN	1	SSS	PAINT	BLINDS	ALUMIN
153	1	2'-0" x 7'-0"	1	WFL	FACE SCEN	1	SSS	PAINT	BLINDS	ALUMIN
154	1	2'-0" x 7'-0"	1	WFL	FACE SCEN	1	SSS	PAINT	BLINDS	ALUMIN
155	1	2'-0" x 7'-0"	1	WFL	FACE SCEN	1	SSS	PAINT	BLINDS	ALUMIN
156	1	2'-0" x 7'-0"	1	WFL	FACE SCEN	1	SSS	PAINT	BLINDS	ALUMIN
157	1	2'-0" x 7'-0"	1	WFL	FACE SCEN	1	SSS	PAINT	BLINDS	ALUMIN
158	1	2'-0" x 7'-0"	1	WFL	FACE SCEN	1	SSS	PAINT	BLINDS	ALUMIN
159	1	2'-0" x 7'-0"	1	WFL	FACE SCEN	1	SSS	PAINT	BLINDS	ALUMIN
160	1	2'-0" x 7'-0"	1	WFL	FACE SCEN	1	SSS	PAINT	BLINDS	ALUMIN
161	1	2'-0" x 7'-0"	1	WFL	FACE SCEN	1	SSS	PAINT	BLINDS	ALUMIN
162	1	2'-0" x 7'-0"	1	WFL	FACE SCEN	1	SSS	PAINT	BLINDS	ALUMIN
163	1	2'-0" x 7'-0"	1	WFL	FACE SCEN	1	SSS	PAINT	BLINDS	ALUMIN
164	1	2'-0" x 7'-0"	1	WFL	FACE SCEN	1	SSS	PAINT	BLINDS	ALUMIN
165	1	2'-0" x 7'-0"	1	WFL	FACE SCEN	1	SSS	PAINT	BLINDS	ALUMIN
166	1	2'-0" x 7'-0"	1	WFL	FACE SCEN	1	SSS	PAINT	BLINDS	ALUMIN
167	1	2'-0" x 7'-0"	1	WFL	FACE SCEN	1	SSS	PAINT	BLINDS	ALUMIN
168	1	2'-0" x 7'-0"	1	WFL	FACE SCEN	1	SSS	PAINT	BLINDS	ALUMIN
169	1	2'-0" x 7'-0"	1	WFL	FACE SCEN	1	SSS	PAINT	BLINDS	ALUMIN
170	1	2'-0" x 7'-0"	1	WFL	FACE SCEN	1	SSS	PAINT	BLINDS	ALUMIN
171	1	2'-0" x 7'-0"	1	WFL	FACE SCEN	1	SSS	PAINT	BLINDS	ALUMIN
172	1	2'-0" x 7'-0"	1	WFL	FACE SCEN	1	SSS	PAINT	BLINDS	ALUMIN
173	1	2'-0" x 7'-0"	1	WFL	FACE SCEN	1	SSS	PAINT	BLINDS	ALUMIN
174	1	2'-0" x 7'-0"	1	WFL	FACE SCEN	1	SSS	PAINT	BLINDS	ALUMIN
175	1	2'-0" x 7'-0"	1	WFL	FACE SCEN	1	SSS	PAINT	BLINDS	ALUMIN
176	1	2'-0" x 7'-0"	1	WFL	FACE SCEN	1	SSS	PAINT	BLINDS	ALUMIN
177	1	2'-0" x 7'-0"	1	WFL	FACE SCEN	1	SSS	PAINT	BLINDS	ALUMIN
178	1	2'-0" x 7'-0"	1	WFL	FACE SCEN	1	SSS	PAINT	BLINDS	ALUMIN
179	1	2'-0" x 7'-0"	1	WFL	FACE SCEN	1	SSS	PAINT	BLINDS	ALUMIN
180	1	2'-0" x 7'-0"	1	WFL	FACE SCEN	1	SSS	PAINT	BLINDS	ALUMIN
181	1	2'-0" x 7'-0"	1	WFL	FACE SCEN	1	SSS	PAINT	BLINDS	ALUMIN
182	1	2'-0" x 7'-0"	1	WFL	FACE SCEN	1	SSS	PAINT	BLINDS	ALUMIN
183	1	2'-0" x 7'-0"	1	WFL	FACE SCEN	1	SSS	PAINT	BLINDS	ALUMIN
184	1	2'-0" x 7'-0"	1	WFL	FACE SCEN	1	SSS	PAINT	BLINDS	ALUMIN
185	1	2'-0" x 7'-0"	1	WFL	FACE SCEN	1	SSS	PAINT	BLINDS	ALUMIN
186	1	2'-0" x 7'-0"	1	WFL	FACE SCEN	1	SSS	PAINT	BLINDS	ALUMIN
187	1	2'-0" x 7'-0"	1	WFL	FACE SCEN	1	SSS	PAINT	BLINDS	ALUMIN
188	1	2'-0" x 7'-0"	1	WFL	FACE SCEN	1	SSS	PAINT	BLINDS	ALUMIN
189	1	2'-0" x 7'-0"	1	WFL	FACE SCEN	1	SSS	PAINT	BLINDS	ALUMIN
190	1	2'-0" x 7'-0"	1	WFL	FACE SCEN	1	SSS	PAINT	BLINDS	ALUMIN
191	1	2'-0" x 7'-0"	1	WFL	FACE SCEN	1	SSS	PAINT	BLINDS	ALUMIN
192	1	2'-0" x 7'-0"	1	WFL	FACE SCEN	1	SSS	PAINT	BLINDS	ALUMIN
193	1	2'-0" x 7'-0"	1	WFL	FACE SCEN	1	SSS	PAINT	BLINDS	ALUMIN
194	1	2'-0" x 7'-0"	1	WFL	FACE SCEN	1	SSS	PAINT	BLINDS	ALUMIN
195	1	2'-0" x 7'-0"	1	WFL	FACE SCEN	1	SSS	PAINT	BLINDS	ALUMIN
196	1	2'-0" x 7'-0"	1	WFL	FACE SCEN	1	SSS	PAINT	BLINDS	ALUMIN
197	1	2'-0" x 7'-0"	1	WFL	FACE SCEN	1	SSS	PAINT	BLINDS	ALUMIN
198	1	2'-0" x 7'-0"	1	WFL	FACE SCEN	1	SSS	PAINT	BLINDS	ALUMIN
199	1	2'-0" x 7'-0"	1	WFL	FACE SCEN	1	SSS	PAINT	BLINDS	ALUMIN
200	1	2'-0" x 7'-0"	1	WFL	FACE SCEN	1	SSS	PAINT	BLINDS	ALUMIN

TULSA PUBLIC  
SCHOOLS

STATE OF OKLAHOMA  
SARAH J. GOULD  
No. 5362  
JAMES B. BRIDGES  
JAN 10 24

## DOOR & WINDOW SCHEDULES AND TYPES

## A602





1 FOODSERVICE EQUIPMENT  
PLUMBING CONNECTIONS PLAN  
1/4" = 1'-0"

PLUMBING CONNECTIONS SCHEDULE						
NO.	ITEM NO.	SIZE	DESCRIPTION	FLOOR	APP.	REMARKS
1	1	1/2"	FL. SINK	FLOOR	1/2"	THE PLUMBING CONTRACTOR IS TO
2	2	1/2"	FL. SINK	FLOOR	1/2"	THE PLUMBING CONTRACTOR IS TO
3	3	1/2"	FL. SINK	FLOOR	1/2"	THE PLUMBING CONTRACTOR IS TO
4	4	1/2"	FL. SINK	FLOOR	1/2"	THE PLUMBING CONTRACTOR IS TO
5	5	1/2"	FL. SINK	FLOOR	1/2"	THE PLUMBING CONTRACTOR IS TO
6	6	1/2"	FL. SINK	FLOOR	1/2"	THE PLUMBING CONTRACTOR IS TO
7	7	1/2"	FL. SINK	FLOOR	1/2"	THE PLUMBING CONTRACTOR IS TO
8	8	1/2"	FL. SINK	FLOOR	1/2"	THE PLUMBING CONTRACTOR IS TO
9	9	1/2"	FL. SINK	FLOOR	1/2"	THE PLUMBING CONTRACTOR IS TO
10	10	1/2"	FL. SINK	FLOOR	1/2"	THE PLUMBING CONTRACTOR IS TO
11	11	1/2"	FL. SINK	FLOOR	1/2"	THE PLUMBING CONTRACTOR IS TO
12	12	1/2"	FL. SINK	FLOOR	1/2"	THE PLUMBING CONTRACTOR IS TO
13	13	1/2"	FL. SINK	FLOOR	1/2"	THE PLUMBING CONTRACTOR IS TO
14	14	1/2"	FL. SINK	FLOOR	1/2"	THE PLUMBING CONTRACTOR IS TO
15	15	1/2"	FL. SINK	FLOOR	1/2"	THE PLUMBING CONTRACTOR IS TO
16	16	1/2"	FL. SINK	FLOOR	1/2"	THE PLUMBING CONTRACTOR IS TO
17	17	1/2"	FL. SINK	FLOOR	1/2"	THE PLUMBING CONTRACTOR IS TO
18	18	1/2"	FL. SINK	FLOOR	1/2"	THE PLUMBING CONTRACTOR IS TO
19	19	1/2"	FL. SINK	FLOOR	1/2"	THE PLUMBING CONTRACTOR IS TO
20	20	1/2"	FL. SINK	FLOOR	1/2"	THE PLUMBING CONTRACTOR IS TO
21	21	1/2"	FL. SINK	FLOOR	1/2"	THE PLUMBING CONTRACTOR IS TO
22	22	1/2"	FL. SINK	FLOOR	1/2"	THE PLUMBING CONTRACTOR IS TO
23	23	1/2"	FL. SINK	FLOOR	1/2"	THE PLUMBING CONTRACTOR IS TO
24	24	1/2"	FL. SINK	FLOOR	1/2"	THE PLUMBING CONTRACTOR IS TO
25	25	1/2"	FL. SINK	FLOOR	1/2"	THE PLUMBING CONTRACTOR IS TO
26	26	1/2"	FL. SINK	FLOOR	1/2"	THE PLUMBING CONTRACTOR IS TO
27	27	1/2"	FL. SINK	FLOOR	1/2"	THE PLUMBING CONTRACTOR IS TO
28	28	1/2"	FL. SINK	FLOOR	1/2"	THE PLUMBING CONTRACTOR IS TO
29	29	1/2"	FL. SINK	FLOOR	1/2"	THE PLUMBING CONTRACTOR IS TO
30	30	1/2"	FL. SINK	FLOOR	1/2"	THE PLUMBING CONTRACTOR IS TO
31	31	1/2"	FL. SINK	FLOOR	1/2"	THE PLUMBING CONTRACTOR IS TO
32	32	1/2"	FL. SINK	FLOOR	1/2"	THE PLUMBING CONTRACTOR IS TO
33	33	1/2"	FL. SINK	FLOOR	1/2"	THE PLUMBING CONTRACTOR IS TO
34	34	1/2"	FL. SINK	FLOOR	1/2"	THE PLUMBING CONTRACTOR IS TO
35	35	1/2"	FL. SINK	FLOOR	1/2"	THE PLUMBING CONTRACTOR IS TO
36	36	1/2"	FL. SINK	FLOOR	1/2"	THE PLUMBING CONTRACTOR IS TO
37	37	1/2"	FL. SINK	FLOOR	1/2"	THE PLUMBING CONTRACTOR IS TO
38	38	1/2"	FL. SINK	FLOOR	1/2"	THE PLUMBING CONTRACTOR IS TO
39	39	1/2"	FL. SINK	FLOOR	1/2"	THE PLUMBING CONTRACTOR IS TO
40	40	1/2"	FL. SINK	FLOOR	1/2"	THE PLUMBING CONTRACTOR IS TO
41	41	1/2"	FL. SINK	FLOOR	1/2"	THE PLUMBING CONTRACTOR IS TO
42	42	1/2"	FL. SINK	FLOOR	1/2"	THE PLUMBING CONTRACTOR IS TO
43	43	1/2"	FL. SINK	FLOOR	1/2"	THE PLUMBING CONTRACTOR IS TO
44	44	1/2"	FL. SINK	FLOOR	1/2"	THE PLUMBING CONTRACTOR IS TO
45	45	1/2"	FL. SINK	FLOOR	1/2"	THE PLUMBING CONTRACTOR IS TO
46	46	1/2"	FL. SINK	FLOOR	1/2"	THE PLUMBING CONTRACTOR IS TO
47	47	1/2"	FL. SINK	FLOOR	1/2"	THE PLUMBING CONTRACTOR IS TO
48	48	1/2"	FL. SINK	FLOOR	1/2"	THE PLUMBING CONTRACTOR IS TO
49	49	1/2"	FL. SINK	FLOOR	1/2"	THE PLUMBING CONTRACTOR IS TO
50	50	1/2"	FL. SINK	FLOOR	1/2"	THE PLUMBING CONTRACTOR IS TO
51	51	1/2"	FL. SINK	FLOOR	1/2"	THE PLUMBING CONTRACTOR IS TO
52	52	1/2"	FL. SINK	FLOOR	1/2"	THE PLUMBING CONTRACTOR IS TO
53	53	1/2"	FL. SINK	FLOOR	1/2"	THE PLUMBING CONTRACTOR IS TO
54	54	1/2"	FL. SINK	FLOOR	1/2"	THE PLUMBING CONTRACTOR IS TO
55	55	1/2"	FL. SINK	FLOOR	1/2"	THE PLUMBING CONTRACTOR IS TO
56	56	1/2"	FL. SINK	FLOOR	1/2"	THE PLUMBING CONTRACTOR IS TO
57	57	1/2"	FL. SINK	FLOOR	1/2"	THE PLUMBING CONTRACTOR IS TO
58	58	1/2"	FL. SINK	FLOOR	1/2"	THE PLUMBING CONTRACTOR IS TO
59	59	1/2"	FL. SINK	FLOOR	1/2"	THE PLUMBING CONTRACTOR IS TO
60	60	1/2"	FL. SINK	FLOOR	1/2"	THE PLUMBING CONTRACTOR IS TO
61	61	1/2"	FL. SINK	FLOOR	1/2"	THE PLUMBING CONTRACTOR IS TO
62	62	1/2"	FL. SINK	FLOOR	1/2"	THE PLUMBING CONTRACTOR IS TO
63	63	1/2"	FL. SINK	FLOOR	1/2"	THE PLUMBING CONTRACTOR IS TO
64	64	1/2"	FL. SINK	FLOOR	1/2"	THE PLUMBING CONTRACTOR IS TO
65	65	1/2"	FL. SINK	FLOOR	1/2"	THE PLUMBING CONTRACTOR IS TO
66	66	1/2"	FL. SINK	FLOOR	1/2"	THE PLUMBING CONTRACTOR IS TO
67	67	1/2"	FL. SINK	FLOOR	1/2"	THE PLUMBING CONTRACTOR IS TO
68	68	1/2"	FL. SINK	FLOOR	1/2"	THE PLUMBING CONTRACTOR IS TO
69	69	1/2"	FL. SINK	FLOOR	1/2"	THE PLUMBING CONTRACTOR IS TO
70	70	1/2"	FL. SINK	FLOOR	1/2"	THE PLUMBING CONTRACTOR IS TO
71	71	1/2"	FL. SINK	FLOOR	1/2"	THE PLUMBING CONTRACTOR IS TO
72	72	1/2"	FL. SINK	FLOOR	1/2"	THE PLUMBING CONTRACTOR IS TO
73	73	1/2"	FL. SINK	FLOOR	1/2"	THE PLUMBING CONTRACTOR IS TO
74	74	1/2"	FL. SINK	FLOOR	1/2"	THE PLUMBING CONTRACTOR IS TO
75	75	1/2"	FL. SINK	FLOOR	1/2"	THE PLUMBING CONTRACTOR IS TO
76	76	1/2"	FL. SINK	FLOOR	1/2"	THE PLUMBING CONTRACTOR IS TO
77	77	1/2"	FL. SINK	FLOOR	1/2"	THE PLUMBING CONTRACTOR IS TO
78	78	1/2"	FL. SINK	FLOOR	1/2"	THE PLUMBING CONTRACTOR IS TO
79	79	1/2"	FL. SINK	FLOOR	1/2"	THE PLUMBING CONTRACTOR IS TO
80	80	1/2"	FL. SINK	FLOOR	1/2"	THE PLUMBING CONTRACTOR IS TO
81	81	1/2"	FL. SINK	FLOOR	1/2"	THE PLUMBING CONTRACTOR IS TO
82	82	1/2"	FL. SINK	FLOOR	1/2"	THE PLUMBING CONTRACTOR IS TO
83	83	1/2"	FL. SINK	FLOOR	1/2"	THE PLUMBING CONTRACTOR IS TO
84	84	1/2"	FL. SINK	FLOOR	1/2"	THE PLUMBING CONTRACTOR IS TO
85	85	1/2"	FL. SINK	FLOOR	1/2"	THE PLUMBING CONTRACTOR IS TO
86	86	1/2"	FL. SINK	FLOOR	1/2"	THE PLUMBING CONTRACTOR IS TO
87	87	1/2"	FL. SINK	FLOOR	1/2"	THE PLUMBING CONTRACTOR IS TO
88	88	1/2"	FL. SINK	FLOOR	1/2"	THE PLUMBING CONTRACTOR IS TO
89	89	1/2"	FL. SINK	FLOOR	1/2"	THE PLUMBING CONTRACTOR IS TO
90	90	1/2"	FL. SINK	FLOOR	1/2"	THE PLUMBING CONTRACTOR IS TO
91	91	1/2"	FL. SINK	FLOOR	1/2"	THE PLUMBING CONTRACTOR IS TO
92	92	1/2"	FL. SINK	FLOOR	1/2"	THE PLUMBING CONTRACTOR IS TO
93	93	1/2"	FL. SINK	FLOOR	1/2"	THE PLUMBING CONTRACTOR IS TO
94	94	1/2"	FL. SINK	FLOOR	1/2"	THE PLUMBING CONTRACTOR IS TO
95	95	1/2"	FL. SINK	FLOOR	1/2"	THE PLUMBING CONTRACTOR IS TO
96	96	1/2"	FL. SINK	FLOOR	1/2"	THE PLUMBING CONTRACTOR IS TO
97	97	1/2"	FL. SINK	FLOOR	1/2"	THE PLUMBING CONTRACTOR IS TO
98	98	1/2"	FL. SINK	FLOOR	1/2"	THE PLUMBING CONTRACTOR IS TO
99	99	1/2"	FL. SINK	FLOOR	1/2"	THE PLUMBING CONTRACTOR IS TO
100	100	1/2"	FL. SINK	FLOOR	1/2"	THE PLUMBING CONTRACTOR IS TO

**PLUMBING/MECHANICAL NOTES**

DO NOT ROUGH-IN FROM THIS DRAWING REFER TO CONTRACTORS DISPOSITIONED DRAWINGS

1. DIMENSIONS INDICATED ARE TO BE VERIFIED BY THE FOODSERVICE CONTRACTOR AND EQUIPMENT ARE REQUIRED BY THE FOODSERVICE CONTRACTOR ON FIELD CONNECTIONS

2. VENTILATE REFRIGERATION MACHINERY ROOMS TO PROVIDE 50% FRESH AIR

3. EXHAUST DUCTS AND PANS CONNECTED TO EXHAUST HOODS SHALL NOT BEHAVE ANY OTHER AREA OR APPLIANCE

4. DUCTS OF MULTIPLE EXHAUST HOODS WITH COFFIN CONTROL PANEL MUST BE INSTALLED FOR USE WITH A SINGLE EXHAUST FAN

THE FOLLOWING WORK IS BY THE PLUMBING CONTRACTOR REFER TO THE PLUMBING DRAWINGS AND/OR SPECIFICATIONS FOR ADDITIONAL INFORMATION

5. SERVICE SINKS, LAVATORIES AND DRINKING FOUNTAINS

6. GROUND-PROOF EXHAUST DUCTS FROM VENT CONNECTIONS OF THE EXHAUST HOODS

7. PLUMBING-OUT OF ALL PIPING AND DRAINAGE SYSTEMS PRIOR TO CONNECTION TO FOODSERVICE EQUIPMENT

**PLUMBING SYMBOLS**

1/2" HOT WATER

1/2" COLD WATER

1/2" GAS SUPPLY

1/2" INCH REEFER WASTE (EXTEND TO PD)

1/2" PD FLOOR DRAIN

1/2" PD FLOOR SINK - 1/2" GRATE


1/2" ABOVE FINISHED FLOOR

1/2" EXTEND TO CONNECTION

1/2" DRAIN DRAIN FROM ABOVE

**NOTES**

THE PLUMBING CONTRACTOR TO ROUGH-IN FROM THE FOODSERVICE CONTRACTORS ROUGH-IN DRAWINGS ONLY. THE PLUMBING CONTRACTOR WILL TAKE FULL RESPONSIBILITY FOR THE ROUGH-IN LOCATIONS IF THE FOODSERVICE AND/OR PLUMBING DRAWINGS ARE USED FOR THIS WORK.



KKT ARCHITECTS, INC.  
200 SOUTH CHICKASAW PLACE, SUITE 200  
TULSA, OKLAHOMA 74114  
(918) 244-4275 / (918) 244-7848  
WWW.KKTARCHITECTS.COM  
C OF A #234 EXPIRES 12/30/25

**East Central  
HIGH SCHOOL  
CAFETERIA  
REMODEL**

TULSA PUBLIC  
SCHOOLS

121150 E. 11th Street  
Addendum # 1

10.10.2024 CD  
11.10.2024 Addendum #1

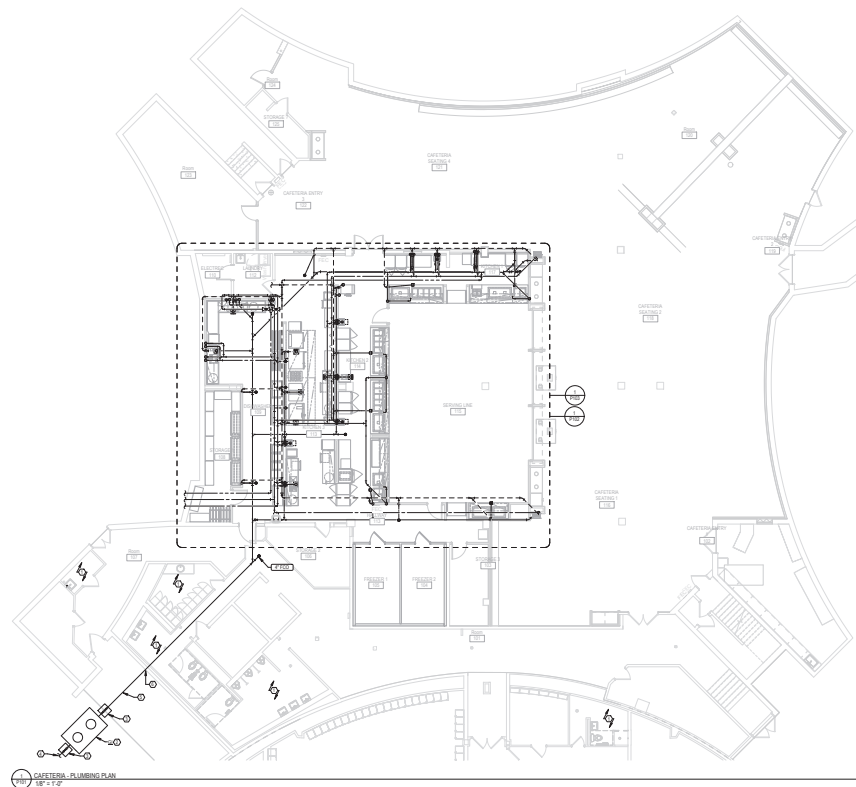
PROJECT NO. J245041

FOODSERVICE EQUIP.  
PLUMBING CONN.  
PLAN  
**FS301**



1. PUMPING IN THESE AREAS IS TO BE SIMAN AS IS NOT WITHIN SCOPE.
2. PREPARE AND PRECAST CONCRETE GELAGE INTERCEPTOR FOR TULSA REQUIREMENTS. BASIS OF DESIGN TO INSTALL GELAGE INTERCEPTOR IN EXISTING 48" DIAMETER PAVING LOT WITH TRAFFIC IN THE AREA. COORDINATE WITH TULSA CITY ENGINEER FOR EXISTING CONDITIONS. PATCH AND REPAIR ASPHALT TO MATCH EXISTING CONDITIONS. INSTALL PER VPI INSTRUCTIONS AND VENT PER TULSA REQUIREMENTS. ROUTE VENT TRAIL BUILDING TO VPI TERMINATION INSTALL VENT PIPE FOR GELAGE TRAP.
3. CONNECTED TO NO FUTURE VENTS.
4. INSTALL 4" DIAMETER GELAGE TRAP ON BOTH SIDES OF GELAGE INTERCEPTOR TO CONNECT TO MAIN FLUSH WITH GELAGE TRAP.
5. EXTEND MAIN DRAINER TO CONNECT TO HANLEY #74 OR LARGER SANITARY BARRIER FIELD VENT EXACT LOCATION AND INVERT. PROVIDE 1/2" DRAIN PIPE CAST IRON TO GRADE TRAP. PROVIDE CLEANOUT 1" DRAIN CLEANOUT EVERY 100' AS REQUIRED.
6. SUEDE AND SEAL ALL PIPES FINISHING THIRUMASONRY WALLS. PROVIDE 1/2" DRAIN PIPE TO GRADE. SUEDE AND SEAL ALL TRAP TOPS. THICK TOPPLING.

Notes	Minimum Grease Interceptor Required (Gallons) =	432
<sup>1</sup> GPM based on IPC 108.3	Grease Interceptor Provided (Gallons) =	18
<sup>2</sup> Gallon based on IPC 108.3.7		



**KKT ARCHITECTS, INC.**  
2200 SOUTH UTICA PLACE, SUITE 200  
TULSA, OKLAHOMA 74114  
[P] 918.744.4270 \ [F] 918.744.7849  
WWW.KKTARCHITECTS.COM  
CERTIFICATE OF AUTHORIZATION



**EAST  
CENTRAL  
HIGH  
SCHOOL  
CAFETERIA  
REMODEL**

TULSA PUBLIC  
SCHOOLS

12150 E 11TH  
TULSA, OK  
74128

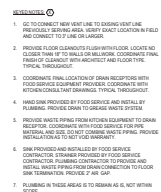
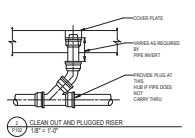


REV.	DATE	#	DESCRIPTION
	10-18-2024	•	100% CD
	11-18-24	1	• ADDENDUM #1

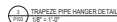
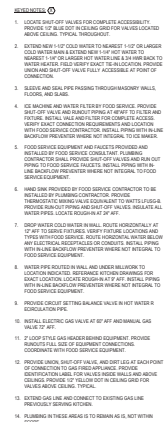
CAFETERIA -  
PLUMBING PLAN

**P101**










 KITCHEN - DOMESTIC WATER PLAN  
 P102 1/4" = 1'-0"





KKT ARCHITECTS, INC.  
3000 SOUTH AVENUE, SUITE 100  
TULSA, OKLAHOMA 74114  
PHONE: 918.425.1111, 918.425.1112  
WWW.KKTARCHITECTS.COM  
CERTIFICATE OF AUTHORIZATION



## EAST CENTRAL HIGH SCHOOL CAFETERIA REMODEL

TULSA PUBLIC  
SCHOOLS

12150 E 11TH  
TULSA, OK  
74128



REV. DATE # DESCRIPTION  
11-18-2024 1 100% CD  
11-18-2024 1 1. ADDENDUM #1

ELECTRICAL  
SCHEDULES

E003

LIGHTING CONTROL PANEL - LCP					
RELAY	GROUP	AREA/CONTROLLER	PLUMBING/VENT	CONTROL	REMARKS
1	RELAY 1	REAR AREA	W	SPIN ON	A
2	RELAY 2	REAR AREA	W	SPIN ON	A
3	RELAY 3	REAR AREA	W	SPIN ON	A
4	RELAY 4	REAR AREA	W	SPIN ON	A
5	RELAY 5	REAR AREA	W	SPIN ON	A
6	RELAY 6	REAR AREA	W	SPIN ON	A
7	RELAY 7	REAR AREA	W	SPIN ON	A
8	RELAY 8	REAR AREA	W	SPIN ON	A

GENERAL NOTES:  
1. BASE OF DESIGN CONTROL PANEL IS HUBBELL CASE  
2. COORDINATE ALL SCHEDULE SETTINGS WITH OWNER PRIOR TO ORDERING  
3. SEE PLANS FOR LOGICAL AND GLOBAL OVERSEER SETTINGS  
CONTROL COMMENTS:  
1. SCHEDULE INDIVIDUAL OFF WITH AN OVERSEER OVERSEER CONTROL  
2. PROGRAMMABLE WITH 15 MINUTE DELAY SPACE TO START DURING SCHOOL HOURS

LIGHTING FIXTURE SCHEDULE									
RELAY	GROUP	AREA/CONTROLLER	PLUMBING/VENT	CONTROL	REMARKS	RELAY	GROUP	AREA/CONTROLLER	PLUMBING/VENT
1	RELAY 1	REAR AREA	W	SPIN ON	A	2	RELAY 2	REAR AREA	W
3	RELAY 3	REAR AREA	W	SPIN ON	A	4	RELAY 4	REAR AREA	W
5	RELAY 5	REAR AREA	W	SPIN ON	A	6	RELAY 6	REAR AREA	W
7	RELAY 7	REAR AREA	W	SPIN ON	A	8	RELAY 8	REAR AREA	W
9	RELAY 9	REAR AREA	W	SPIN ON	A	10	RELAY 10	REAR AREA	W
11	RELAY 11	REAR AREA	W	SPIN ON	A	12	RELAY 12	REAR AREA	W
13	RELAY 13	REAR AREA	W	SPIN ON	A	14	RELAY 14	REAR AREA	W
15	RELAY 15	REAR AREA	W	SPIN ON	A	16	RELAY 16	REAR AREA	W
17	RELAY 17	REAR AREA	W	SPIN ON	A	18	RELAY 18	REAR AREA	W
19	RELAY 19	REAR AREA	W	SPIN ON	A	20	RELAY 20	REAR AREA	W
21	RELAY 21	REAR AREA	W	SPIN ON	A	22	RELAY 22	REAR AREA	W
23	RELAY 23	REAR AREA	W	SPIN ON	A	24	RELAY 24	REAR AREA	W
25	RELAY 25	REAR AREA	W	SPIN ON	A	26	RELAY 26	REAR AREA	W
27	RELAY 27	REAR AREA	W	SPIN ON	A	28	RELAY 28	REAR AREA	W
29	RELAY 29	REAR AREA	W	SPIN ON	A	30	RELAY 30	REAR AREA	W
31	RELAY 31	REAR AREA	W	SPIN ON	A	32	RELAY 32	REAR AREA	W
33	RELAY 33	REAR AREA	W	SPIN ON	A	34	RELAY 34	REAR AREA	W
35	RELAY 35	REAR AREA	W	SPIN ON	A	36	RELAY 36	REAR AREA	W
37	RELAY 37	REAR AREA	W	SPIN ON	A	38	RELAY 38	REAR AREA	W
39	RELAY 39	REAR AREA	W	SPIN ON	A	40	RELAY 40	REAR AREA	W
41	RELAY 41	REAR AREA	W	SPIN ON	A	42	RELAY 42	REAR AREA	W
43	RELAY 43	REAR AREA	W	SPIN ON	A	44	RELAY 44	REAR AREA	W
45	RELAY 45	REAR AREA	W	SPIN ON	A	46	RELAY 46	REAR AREA	W
47	RELAY 47	REAR AREA	W	SPIN ON	A	48	RELAY 48	REAR AREA	W
49	RELAY 49	REAR AREA	W	SPIN ON	A	50	RELAY 50	REAR AREA	W
51	RELAY 51	REAR AREA	W	SPIN ON	A	52	RELAY 52	REAR AREA	W
53	RELAY 53	REAR AREA	W	SPIN ON	A	54	RELAY 54	REAR AREA	W
55	RELAY 55	REAR AREA	W	SPIN ON	A	56	RELAY 56	REAR AREA	W
57	RELAY 57	REAR AREA	W	SPIN ON	A	58	RELAY 58	REAR AREA	W
59	RELAY 59	REAR AREA	W	SPIN ON	A	60	RELAY 60	REAR AREA	W
61	RELAY 61	REAR AREA	W	SPIN ON	A	62	RELAY 62	REAR AREA	W
63	RELAY 63	REAR AREA	W	SPIN ON	A	64	RELAY 64	REAR AREA	W
65	RELAY 65	REAR AREA	W	SPIN ON	A	66	RELAY 66	REAR AREA	W
67	RELAY 67	REAR AREA	W	SPIN ON	A	68	RELAY 68	REAR AREA	W
69	RELAY 69	REAR AREA	W	SPIN ON	A	70	RELAY 70	REAR AREA	W
71	RELAY 71	REAR AREA	W	SPIN ON	A	72	RELAY 72	REAR AREA	W
73	RELAY 73	REAR AREA	W	SPIN ON	A	74	RELAY 74	REAR AREA	W
75	RELAY 75	REAR AREA	W	SPIN ON	A	76	RELAY 76	REAR AREA	W
77	RELAY 77	REAR AREA	W	SPIN ON	A	78	RELAY 78	REAR AREA	W
79	RELAY 79	REAR AREA	W	SPIN ON	A	80	RELAY 80	REAR AREA	W
81	RELAY 81	REAR AREA	W	SPIN ON	A	82	RELAY 82	REAR AREA	W
83	RELAY 83	REAR AREA	W	SPIN ON	A	84	RELAY 84	REAR AREA	W
85	RELAY 85	REAR AREA	W	SPIN ON	A	86	RELAY 86	REAR AREA	W
87	RELAY 87	REAR AREA	W	SPIN ON	A	88	RELAY 88	REAR AREA	W
89	RELAY 89	REAR AREA	W	SPIN ON	A	90	RELAY 90	REAR AREA	W
91	RELAY 91	REAR AREA	W	SPIN ON	A	92	RELAY 92	REAR AREA	W
93	RELAY 93	REAR AREA	W	SPIN ON	A	94	RELAY 94	REAR AREA	W
95	RELAY 95	REAR AREA	W	SPIN ON	A	96	RELAY 96	REAR AREA	W
97	RELAY 97	REAR AREA	W	SPIN ON	A	98	RELAY 98	REAR AREA	W
99	RELAY 99	REAR AREA	W	SPIN ON	A	100	RELAY 100	REAR AREA	W

GENERAL NOTES:  
1. BASE OF DESIGN CONTROL PANEL IS HUBBELL CASE  
2. COORDINATE ALL SCHEDULE SETTINGS WITH OWNER PRIOR TO ORDERING  
3. SEE PLANS FOR LOGICAL AND GLOBAL OVERSEER SETTINGS  
CONTROL COMMENTS:  
1. SCHEDULE INDIVIDUAL OFF WITH AN OVERSEER OVERSEER CONTROL  
2. PROGRAMMABLE WITH 15 MINUTE DELAY SPACE TO START DURING SCHOOL HOURS

Branch Panel: (E) GK-1						EXISTING		A.I.C. Rating: 20,000 AMPS SYMMETRICAL	
Location: ELECTRIC 100						Main: 3		Main: 100	
Supply From: SURFACE						Wires: 4		Break: Amps 200	
Mounting: SURFACE						Log: Standard			
Enclosure: NEMA 1									
Notes:									
Q#	Circuit Description	Tag	Phase	A	B	C	Phase	Circuit Description	Q#
1	INCINTEGRAL 48" PROTECTANT CASE	20.1	1	100	100	100	2	20.1	INCINTEGRAL 48" PROTECTANT CASE
2	INCINTEGRAL 48" PROTECTANT CASE	20.2	1	100	100	100	2	20.2	INCINTEGRAL 48" PROTECTANT CASE
3	INCINTEGRAL 48" PROTECTANT CASE	20.3	1	100	100	100	2	20.3	INCINTEGRAL 48" PROTECTANT CASE
4	INCINTEGRAL 48" PROTECTANT CASE	20.4	1	100	100	100	2	20.4	INCINTEGRAL 48" PROTECTANT CASE
5	INCINTEGRAL 48" PROTECTANT CASE	20.5	1	100	100	100	2	20.5	INCINTEGRAL 48" PROTECTANT CASE
6	INCINTEGRAL 48" PROTECTANT CASE	20.6	1	100	100	100	2	20.6	INCINTEGRAL 48" PROTECTANT CASE
7	INCINTEGRAL 48" PROTECTANT CASE	20.7	1	100	100	100	2	20.7	INCINTEGRAL 48" PROTECTANT CASE
8	INCINTEGRAL 48" PROTECTANT CASE	20.8	1	100	100	100	2	20.8	INCINTEGRAL 48" PROTECTANT CASE
9	INCINTEGRAL 48" PROTECTANT CASE	20.9	1	100	100	100	2	20.9	INCINTEGRAL 48" PROTECTANT CASE
10	INCINTEGRAL 48" PROTECTANT CASE	20.10	1	100	100	100	2	20.10	INCINTEGRAL 48" PROTECTANT CASE
11	INCINTEGRAL 48" PROTECTANT CASE	20.11	1	100	100	100	2	20.11	INCINTEGRAL 48" PROTECTANT CASE
12	INCINTEGRAL 48" PROTECTANT CASE	20.12	1	100	100	100	2	20.12	INCINTEGRAL 48" PROTECTANT CASE
13	INCINTEGRAL 48" PROTECTANT CASE	20.13	1	100	100	100	2	20.13	INCINTEGRAL 48" PROTECTANT CASE
14	INCINTEGRAL 48" PROTECTANT CASE	20.14	1	100	100	100	2	20.14	INCINTEGRAL 48" PROTECTANT CASE
15	INCINTEGRAL 48" PROTECTANT CASE	20.15	1	100	100	100	2	20.15	INCINTEGRAL 48" PROTECTANT CASE
16	INCINTEGRAL 48" PROTECTANT CASE	20.16	1	100	100	100	2	20.16	INCINTEGRAL 48" PROTECTANT CASE
17	INCINTEGRAL 48" PROTECTANT CASE	20.17	1	100	100	100	2	20.17	INCINTEGRAL 48" PROTECTANT CASE
18	INCINTEGRAL 48" PROTECTANT CASE	20.18	1	100	100	100	2	20.18	INCINTEGRAL 48" PROTECTANT CASE
19	INCINTEGRAL 48" PROTECTANT CASE	20.19	1	100	100	100	2	20.19	INCINTEGRAL 48" PROTECTANT CASE
20	INCINTEGRAL 48" PROTECTANT CASE	20.20	1	100	100	100	2	20.20	INCINTEGRAL 48" PROTECTANT CASE
21	INCINTEGRAL 48" PROTECTANT CASE	20.21	1	100	100	100	2	20.21	INCINTEGRAL 48" PROTECTANT CASE
22	INCINTEGRAL 48" PROTECTANT CASE	20.22	1	100	100	100	2	20.22	INCINTEGRAL 48" PROTECTANT CASE
23	INCINTEGRAL 48" PROTECTANT CASE	20.23	1	100	100	100	2	20.23	INCINTEGRAL 48" PROTECTANT CASE
24	INCINTEGRAL 48" PROTECTANT CASE	20.24	1	100	100	100	2	20.24	INCINTEGRAL 48" PROTECTANT CASE
25	INCINTEGRAL 48" PROTECTANT CASE	20.25	1	100	100	100	2	20.25	INCINTEGRAL 48" PROTECTANT CASE
26	INCINTEGRAL 48" PROTECTANT CASE	20.26	1	100	100	100	2	20.26	INCINTEGRAL 48" PROTECTANT CASE
27	INCINTEGRAL 48" PROTECTANT CASE	20.27	1	100	100	100	2	20.27	INCINTEGRAL 48" PROTECTANT CASE
28	INCINTEGRAL 48" PROTECTANT CASE	20.28	1	100	100	100	2	20.28	INCINTEGRAL 48" PROTECTANT CASE
29	INCINTEGRAL 48" PROTECTANT CASE	20.29	1	100	100	100	2	20.29	INCINTEGRAL 48" PROTECTANT CASE
30	INCINTEGRAL 48" PROTECTANT CASE	20.30	1	100	100	100	2	20.30	INCINTEGRAL 48" PROTECTANT CASE
31	INCINTEGRAL 48" PROTECTANT CASE	20.31	1	100	100	100	2	20.31	INCINTEGRAL 48" PROTECTANT CASE
32	INCINTEGRAL 48" PROTECTANT CASE	20.32	1	100	100	100	2	20.32	INCINTEGRAL 48" PROTECTANT CASE
33	INCINTEGRAL 48" PROTECTANT CASE	20.33	1	100	100	100	2	20.33	INCINTEGRAL 48" PROTECTANT CASE
34	INCINTEGRAL 48" PROTECTANT CASE	20.34	1	100	100	100	2	20.34	INCINTEGRAL 48" PROTECTANT CASE
35	INCINTEGRAL 48" PROTECTANT CASE	20.35	1	100	100	100	2	20.35	INCINTEGRAL 48" PROTECTANT CASE
36	INCINTEGRAL 48" PROTECTANT CASE	20.36	1	100	100	100	2	20.36	INCINTEGRAL 48" PROTECTANT CASE
37	INCINTEGRAL 48" PROTECTANT CASE	20.37	1	100	100	100	2	20.37	INCINTEGRAL 48" PROTECTANT CASE
38	INCINTEGRAL 48" PROTECTANT CASE	20.38	1	100	100	100	2	20.38	INCINTEGRAL 48" PROTECTANT CASE
39	INCINTEGRAL 48" PROTECTANT CASE	20.39	1	100	100	100	2	20.39	INCINTEGRAL 48" PROTECTANT CASE
40	INCINTEGRAL 48" PROTECTANT CASE	20.40	1	100	100	100	2	20.40	INCINTEGRAL 48" PROTECTANT CASE
41	INCINTEGRAL 48" PROTECTANT CASE	20.41	1	100	100	100	2	20.41	INCINTEGRAL 48" PROTECTANT CASE
42	INCINTEGRAL 48" PROTECTANT CASE	20.42	1	100	100	100	2	20.42	INCINTEGRAL 48" PROTECTANT CASE
43	INCINTEGRAL 48" PROTECTANT CASE	20.43	1	100	100	100	2	20.43	INCINTEGRAL 48" PROTECTANT CASE
44	INCINTEGRAL 48" PROTECTANT CASE	20.44	1	100	100	100	2	20.44	INCINTEGRAL 48" PROTECTANT CASE
45	INCINTEGRAL 48" PROTECTANT CASE	20.45	1	100	100	100	2	20.45	INCINTEGRAL 48" PROTECTANT CASE
46	INCINTEGRAL 48" PROTECTANT CASE	20.46	1	100	100	100	2	20.46	INCINTEGRAL 48" PROTECTANT CASE
47	INCINTEGRAL 48" PROTECTANT CASE	20.47	1	100	100	100	2	20.47	INCINTEGRAL 48" PROTECTANT CASE
48	INCINTEGRAL 48" PROTECTANT CASE	20.48	1	100	100	100	2	20.48	INCINTEGRAL 48" PROTECTANT CASE
49	INCINTEGRAL 48" PROTECTANT CASE	20.49	1	100	100	100	2	20.49	INCINTEGRAL 48" PROTECTANT CASE
50	INCINTEGRAL 48" PROTECTANT CASE	20.50	1	100	100	100	2	20.50	INCINTEGRAL 48" PROTECTANT CASE
51	INCINTEGRAL 48" PROTECTANT CASE	20.51	1	100	100	100	2	20.51	INCINTEGRAL 48" PROTECTANT CASE
52	INCINTEGRAL 48" PROTECTANT CASE	20.52	1	100	100	100	2	20.52	INCINTEGRAL 48" PROTECTANT CASE
53	INCINTEGRAL 48" PROTECTANT CASE	20.53	1	100	100	100	2	20.53	INCINTEGRAL 48" PROTECTANT CASE
54	INCINTEGRAL 48" PROTECTANT CASE	20.54	1	100	100	100	2	20.54	INCINTEGRAL 48" PROTECTANT CASE
55	INCINTEGRAL 48" PROTECTANT CASE	20.55	1	100	100	100	2	20.55	INCINTEGRAL 48" PROTECTANT CASE
56	INCINTEGRAL 48" PROTECTANT CASE	20.56	1	100	100	100	2	20.56	INCINTEGRAL 48" PROTECTANT CASE
57	INCINTEGRAL 48" PROTECTANT CASE	20.57	1	100	100	100	2	20.57	INCINTEGRAL 48" PROTECTANT CASE
58	INCINTEGRAL 48" PROTECTANT CASE	20.58	1	100	100	100	2	20.58	INCINTEGRAL 48" PROTECTANT CASE
59	INCINTEGRAL 48" PROTECTANT CASE	20.59	1	100	100	100	2	20.59	INCINTEGRAL 48" PROTECTANT CASE
60	INCINTEGRAL 48" PROTECTANT CASE	20.60	1	100	100	100	2	20.60	INCINTEGRAL 48" PROTECTANT CASE
61	INCINTEGRAL 48" PROTECTANT CASE	20.61	1	100	100	100	2	20.61	INCINTEGRAL 48" PROTECTANT CASE
62	INCINTEGRAL 48" PROTECTANT CASE	20.62	1	100	100	100	2	20.62	INCINTEGRAL 48" PROTECTANT CASE
63	INCINTEGRAL 48" PROTECTANT CASE	20.63	1	100	100	100	2	20.63	INCINTEGRAL 48" PROTECTANT CASE
64	INCINTEGRAL 48" PROTECTANT CASE	20.64	1	100	100	100	2	20.64	INCINTEGRAL 48" PROTECTANT CASE
65	INCINTEGRAL 48" PROTECTANT CASE	20.65	1	100	100	100	2	20.65	INCINTEGRAL 48" PROTECTANT CASE
66	INCINTEGRAL 48" PROTECTANT CASE	20.66	1	100	100	100	2	20.66	INCINTEGRAL 48" PROTECTANT CASE
67	INCINTEGRAL 48" PROTECTANT CASE	20.67	1	100	100	100	2	20.67	INCINTEGRAL 48" PROTECTANT CASE
68	INCINTEGRAL 48" PROTECTANT CASE	20.68	1	100	100	100	2	20.68	INCINTEGRAL 48" PROTECTANT CASE
69	INCINTEGRAL 48" PROTECTANT CASE	20.69	1	100	100	100	2	20.69	INCINTEGRAL 48" PROTECTANT CASE
70	INCINTEGRAL 48" PROTECTANT CASE	20.70	1	100	100	100	2	20.70	INCINTEGRAL 48" PROTECTANT CASE
71	INCINTEGRAL 48" PROTECTANT CASE	20.71	1	100	100	100	2	20.71	INCINTEGRAL 48" PROTECTANT CASE
72	INCINTEGRAL 48" PROTECTANT CASE	20.72	1	100	100	100	2	20.72	INCINTEGRAL 48" PROTECTANT CASE
73	INCINTEGRAL 48" PROTECTANT CASE	20.73	1	100	100	100	2	20.73	INCINTEGRAL 48" PROTECTANT CASE
74	INCINTEGRAL 48" PROTECTANT CASE	20.74	1	100	100	100	2	20.74	INCINTEGRAL 48" PROTECTANT CASE
75	INCINTEGRAL 48" PROTECTANT CASE	20.75	1	100	100	100	2	20.75	INCINTEGRAL 48" PROTECTANT CASE
76	INCINTEGRAL 48" PROTECTANT CASE	20.76	1	100	100	100	2	20.76	INCINTEGRAL 48" PROTECTANT CASE
77	INCINTEGRAL 48" PROTECTANT CASE	20.77	1	100	100	100	2	20.77	INCINTEGRAL 48" PROTECTANT CASE
78	INCINTEGRAL 48" PROTECTANT CASE	20.78	1	100	100	100	2	20.78	INCINTEGRAL 48" PROTECTANT CASE
79	INCINTEGRAL 48" PROTECTANT CASE	20.79	1	100	100	100	2	20.79	INCINTEGRAL 48" PROTECTANT CASE
80	INCINTEGRAL 48" PROTECTANT CASE	20.80	1	100	100	100	2	20.80	INCINTEGRAL 48" PROTECTANT CASE
81	INCINTEGRAL 48" PROTECTANT CASE	20.81	1	100	100	100	2	20.81	INCINTEGRAL 48" PROTECTANT CASE
82	INCINTEGRAL 48" PROTECTANT CASE	20.82	1	100	100	100	2	20.82	INCINTEGRAL 48" PROTECTANT CASE
83	INCINTEGRAL 48" PROTECTANT CASE	20.83	1	100	100	100	2	20.83	INCINTEGRAL 48" PROTECTANT CASE
84	INCINTEGRAL 48" PROTECTANT CASE	20.84	1	100	100	100	2	20.84	INCINTEGRAL 48" PROTECTANT CASE
85	INCINTEGRAL 48" PROTECTANT CASE	20.85	1	100	100	100	2	20.85	INCINTEGRAL 48" PROTECTANT CASE
86	INCINTEGRAL 48" PROTECTANT CASE	20.86	1	100	100	100	2	20.86	INCINTEGRAL 48" PROTECTANT CASE
87	INCINTEGRAL 48" PROTECTANT CASE	20.87	1	100	100	100	2	20.87	INCINTEGRAL 48" PROTECTANT CASE
88	INCINTEGRAL 48" PROTECTANT CASE	20.88	1	100	100	100	2	20.88	INCINTEGRAL 48" PROTECTANT CASE
89	INCINTEGRAL 48" PROTECTANT CASE	20.89	1	100	100	100	2	20.89	INCINTEGRAL 48" PROTECTANT CASE
90	INCINTEGRAL 48" PROTECTANT CASE	20.90	1	100	100	100	2	20.90	INCINTEGRAL 48" PROTECTANT CASE
91	INCINTEGRAL 48" PROTECTANT CASE	20.91	1	100	100	100	2	20.91	INCINTEGRAL 48" PROTECTANT CASE
92	INCINTEGRAL 48" PROTECTANT CASE	20.92	1	100	100	100	2	20.92	INCINTEGRAL 48" PROTECTANT CASE
93	INCINTEGRAL 48" PROTECTANT CASE	20.93	1	100	100	100	2	20.93	INCINTEGRAL 48" PROTECTANT CASE
94	INCINTEGRAL 48" PROTECTANT CASE	20.94	1	100	100	100	2	20.94	INCINTEGRAL 48" PROTECTANT CASE
95	INCINTEGRAL 48" PROTECTANT CASE	20.95	1	100	100	100	2	20.95	INCINTEGRAL 48" PROTECTANT CASE
96	INCINTEGRAL 48" PROTECTANT CASE	20.96	1	100	100	100	2	20.96	INCINTEGRAL 48" PROTECTANT CASE
97	INCINTEGRAL 48" PROTECTANT CASE	20.97	1	100	100	100	2	20.97	INCINTEGRAL 48" PROTECTANT CASE
98	INCINTEGRAL 48" PROTECTANT CASE	20.98	1	100	100	100	2	20.98	INCINTEGRAL 48" PROTECTANT CASE
99	INCINTEGRAL 48" PROTECTANT CASE	20.99	1	100	100	100	2	20.99	INCINTEGRAL 48" PROTECTANT CASE
100	INCINTEGRAL 48" PROTECTANT CASE	20.100	1	100	100	100	2	20.100	INCINTEGRAL 48" PROTECTANT CASE
Legend:									
Legend: (SP1) - Ground Fault Interrupter Branches; (SP2) - All Panel Fault Protection of Equipment Branches; (SP3) - Short Trip Branches; (SP4) - All Panel Fault Protection of Equipment Branches; (SP5) - All Panel Fault Protection of Equipment Branches; (SP6) - All Panel Fault Protection of Equipment Branches; (SP7) - All Panel Fault Protection of Equipment Branches; (SP8) - All Panel Fault Protection of Equipment Branches; (SP9) - All Panel Fault Protection of Equipment Branches; (SP10) - All Panel Fault Protection of Equipment Branches; (SP11) - All Panel Fault Protection of Equipment Branches; (SP12) - All Panel Fault Protection of Equipment Branches; (SP13) - All Panel Fault Protection of Equipment Branches; (SP14) - All Panel Fault Protection of Equipment Branches; (SP15) - All Panel Fault Protection of Equipment Branches; (SP16) - All Panel Fault Protection of Equipment Branches; (SP17) - All Panel Fault Protection of Equipment Branches; (SP18) - All Panel Fault Protection of Equipment Branches; (SP19) - All Panel Fault Protection of Equipment Branches; (SP20) - All Panel Fault Protection of Equipment Branches; (SP21) - All Panel Fault Protection of Equipment Branches; (SP22) - All Panel Fault Protection of Equipment Branches; (SP23) - All Panel Fault Protection of Equipment Branches; (SP24) - All Panel Fault Protection of Equipment Branches; (SP25) - All Panel Fault Protection of Equipment Branches; (SP26) - All Panel Fault Protection of Equipment Branches; (SP27) - All Panel Fault Protection of Equipment Branches; (SP28) - All Panel Fault Protection of Equipment Branches; (SP29) - All Panel Fault Protection of Equipment Branches; (SP30) - All Panel Fault Protection of Equipment Branches; (SP31) - All Panel Fault Protection of Equipment Branches; (SP32) - All Panel Fault Protection of Equipment Branches; (SP33) - All Panel Fault Protection of Equipment Branches; (SP34) - All Panel Fault Protection of Equipment Branches; (SP35) - All Panel Fault Protection of Equipment Branches; (SP36) - All Panel Fault Protection of Equipment Branches; (SP37) - All Panel Fault Protection of Equipment Branches; (SP38) - All Panel Fault Protection of Equipment Branches; (SP39) - All Panel Fault Protection of Equipment Branches; (SP40) - All Panel Fault Protection of Equipment Branches; (SP41) - All Panel Fault Protection of Equipment Branches; (SP42) - All Panel Fault Protection of Equipment Branches; (SP43) - All Panel Fault Protection of Equipment Branches; (SP44) - All Panel Fault Protection of Equipment Branches; (SP45) - All Panel Fault Protection of Equipment Branches; (SP46) - All Panel Fault Protection of Equipment Branches; (SP47) - All Panel Fault Protection of Equipment Branches; (SP48) - All Panel Fault Protection of Equipment Branches; (SP49) - All Panel Fault Protection of Equipment Branches; (SP50) - All Panel Fault Protection of Equipment Branches; (SP51) - All Panel Fault Protection of Equipment Branches; (SP52) - All Panel Fault Protection of Equipment Branches; (SP53) - All Panel Fault Protection of Equipment Branches; (SP54) - All Panel Fault Protection of Equipment Branches; (SP55) - All Panel Fault Protection of Equipment Branches; (SP56) - All Panel Fault Protection of Equipment Branches; (SP57) - All Panel Fault Protection of Equipment Branches; (SP58) - All Panel Fault Protection of Equipment Branches; (SP59) - All Panel Fault Protection of Equipment Branches; (SP60) - All Panel Fault Protection of Equipment Branches; (SP61) - All Panel Fault Protection of Equipment Branches; (SP62) - All Panel Fault Protection of Equipment Branches; (SP63) - All Panel Fault Protection of Equipment Branches; (SP64) - All Panel Fault Protection of Equipment Branches; (SP65) - All Panel Fault Protection of Equipment Branches; (SP66) - All Panel Fault Protection of Equipment Branches; (SP67) - All Panel Fault Protection of Equipment Branches; (SP68) - All Panel Fault Protection of Equipment Branches; (SP69) - All Panel Fault Protection of Equipment Branches; (SP70) - All Panel Fault Protection of Equipment Branches; (SP71) - All Panel Fault Protection of Equipment Branches; (SP72) - All Panel Fault Protection of Equipment Branches; (SP73) - All Panel Fault Protection of Equipment Branches; (SP74) - All Panel Fault Protection of Equipment Branches; (SP75) - All Panel Fault Protection of Equipment Branches; (SP76) - All Panel Fault Protection of Equipment Branches; (SP77) - All Panel Fault Protection of Equipment Branches; (SP78) - All Panel Fault Protection of Equipment Branches; (SP79) - All Panel Fault Protection of Equipment Branches; (SP80) - All Panel Fault Protection of Equipment Branches; (SP81) - All Panel Fault Protection of Equipment Branches; (SP82) - All Panel Fault Protection of Equipment Branches; (SP83) - All Panel Fault Protection of Equipment Branches; (SP84) - All Panel Fault Protection of Equipment Branches; (SP85) - All Panel Fault Protection of Equipment Branches; (SP86) - All Panel Fault Protection of Equipment Branches; (SP87) - All Panel Fault Protection of Equipment Branches; (SP88) - All Panel Fault Protection of Equipment Branches; (SP89) - All Panel Fault Protection of Equipment Branches; (SP90) - All Panel Fault Protection of Equipment Branches; (SP91) - All Panel Fault Protection of Equipment Branches; (SP92) - All Panel Fault Protection of Equipment Branches; (SP93) - All Panel Fault Protection of Equipment Branches; (SP94) - All Panel Fault Protection of Equipment Branches; (SP95) - All Panel Fault Protection of Equipment Branches; (SP96) - All Panel Fault Protection of Equipment Branches; (SP97) - All Panel Fault Protection of Equipment Branches; (SP98) - All Panel Fault Protection of Equipment Branches; (SP99) - All Panel Fault Protection of Equipment Branches; (SP100) - All Panel Fault Protection of Equipment Branches; (SP101) - All Panel Fault Protection of Equipment Branches; (SP102) - All Panel Fault Protection of Equipment Branches; (SP103) - All Panel Fault Protection of Equipment Branches; (SP104) - All Panel Fault Protection of Equipment Branches; (SP105) - All Panel Fault Protection of Equipment Branches; (SP106) - All Panel Fault Protection of Equipment Branches; (SP107) - All Panel Fault Protection of Equipment Branches; (SP108) - All Panel Fault Protection of Equipment Branches; (SP109) - All Panel Fault Protection of Equipment Branches; (SP110) - All Panel Fault Protection of Equipment Branches; (SP111) - All Panel Fault Protection of Equipment Branches; (SP112) - All Panel Fault Protection of Equipment Branches; (SP113) - All Panel Fault Protection of Equipment Branches; (SP114) - All Panel Fault Protection of Equipment Branches; (SP115) - All Panel Fault Protection of Equipment Branches; (SP116) - All Panel Fault Protection of Equipment Branches; (SP117) - All Panel Fault Protection of Equipment Branches; (SP118) - All Panel Fault Protection of Equipment Branches; (SP119) - All Panel Fault Protection of Equipment Branches; (SP120) - All Panel Fault Protection of Equipment Branches; (SP121) - All Panel Fault Protection of Equipment Branches; (SP122) - All Panel Fault Protection of Equipment Branches; (SP123) - All Panel Fault Protection of Equipment Branches; (SP124) - All Panel Fault Protection of Equipment Branches; (SP125) - All Panel Fault Protection of Equipment Branches; (SP126) - All Panel Fault Protection of Equipment Branches; (SP127) - All Panel Fault Protection of Equipment Branches; (SP128) - All Panel Fault Protection of Equipment Branches; (SP129) - All Panel Fault Protection of Equipment Branches; (SP130) - All Panel Fault Protection of Equipment Branches; (SP131) - All Panel Fault Protection of Equipment									





**LEGEND**

- A. ALL REQUIRED CAPPING TO BE IN PLACE AND SHALL BE
- B. ALL REQUIRED WIRING TO BE IN PLACE AND SHALL BE
- C. ALL REQUIRED WIRING TO BE IN PLACE AND SHALL BE

**KEYNOTES**

- 1. RECONNECT EXISTING LIGHT TO CIRCUIT AS INDICATED
- 2. NEW TO BE INSTALLED IN PLACE AND SHALL BE
- 3. RECONNECT EXISTING LIGHT TO CIRCUIT AS INDICATED

1 FIRST FLOOR-LIGHTING  
SCALE: 1/8" = 1'-0"



KKT ARCHITECTS, INC.  
2000 SOUTH AVENUE, SUITE 100  
TULSA, OKLAHOMA 74114  
PHONE: 918.405.1111, 918.405.1112  
WWW.KKTARCHITECTS.COM  
CERTIFICATE OF AUTHORIZATION



**EAST  
CENTRAL  
HIGH  
SCHOOL  
CAFETERIA  
REMODEL**

TULSA PUBLIC  
SCHOOLS

12150 E 11TH  
TULSA, OK  
74128

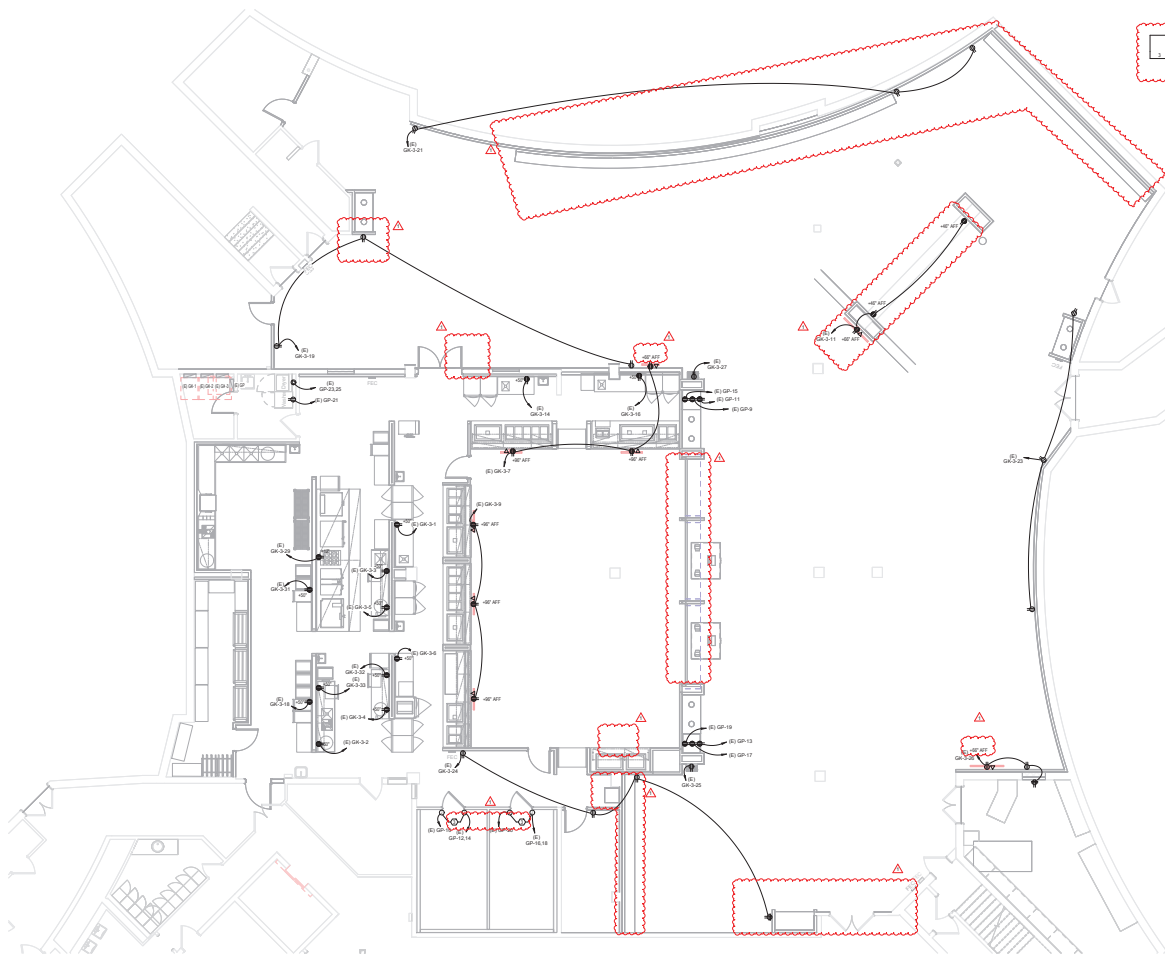


REV.	DATE	DESCRIPTION
1	10-18-2024	100% CD
2	11-18-2024	AS BIDDING #1

CAFETERIA -  
LIGHTING PLAN

**E101**





**GENERAL NOTES**

A. PROVIDE W/DRIPPING PINS FOR ALL FLUOR MOUNTED ELECTRICAL EQUIPMENT. MINIMUM REQUIREMENTS: 1/2" DIA. ALUMINUM, POLYMER REINFORCED CONCRETE, 1" WIDE AND 4" LONGER THAN EQUIPMENT TO BE PLACED ON IT.

**KEYNOTES**

1. SEE KEYNOTES FOR ALL ELECTRICAL POWER AS INDICATED

1 CAFETERIA - POWER PLAN  
SCALE: 1/8" = 1'-0"



KKT ARCHITECTS, INC.  
2000 SOUTH VICKI PLACE, SUITE 200  
TULSA, OKLAHOMA 74114  
PHONE: 744-4025, 744-1118, 744-7440  
WWW.KKTARCHITECTS.COM  
CERTIFICATE OF AUTHORIZATION



# EAST CENTRAL HIGH SCHOOL CAFETERIA REMODEL

TULSA PUBLIC  
SCHOOLS

12150 E 11TH  
TULSA, OK  
74128



REV.	DATE	DESCRIPTION
1	10-18-2024	100% CD
2	11-18-2024	AS BIDDING #1
3		
4		
5		
6		
7		
8		
9		
10		

CAFETERIA - POWER  
PLAN

E201