

Elementary Literacy Adoption Committee

November 4th, 2024

Ema Shirk, Eric Nelson, Jen Rivera, Amber Anderson

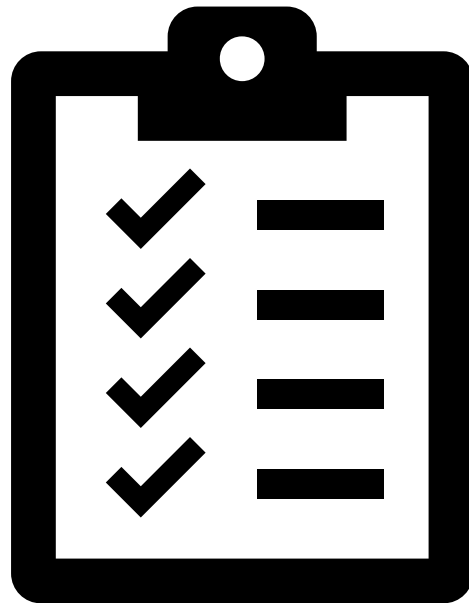


Welcome Question!

- What are some celebrations with the newly adopted literacy resources?
- What is your interest in our continued literacy adoption work this year?



Our time
Together!



Today's Agenda

1. Literacy Adoption Update
2. New Pilot Resources and Options
3. Consensus Process
4. Equity-Driven Decision-Making and Survey Questions

Experimental Use

Phonics (Spanish DLI)

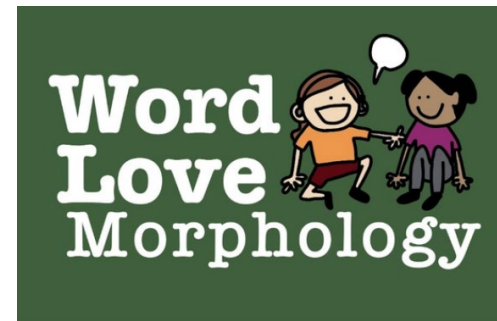


Morphology



Grade 3

Grades 4 & 5



Units 1-3 Bundle

readwritemike

Grades 3 - 5

Who is currently piloting?

- Spanish Phonics

- Lake Hills (K-2)
 - Sherwood Forest (K-2)
 - Stevenson (K-2)
 - Puesta Del Sol (K-2)
-
- Total Educators = 21



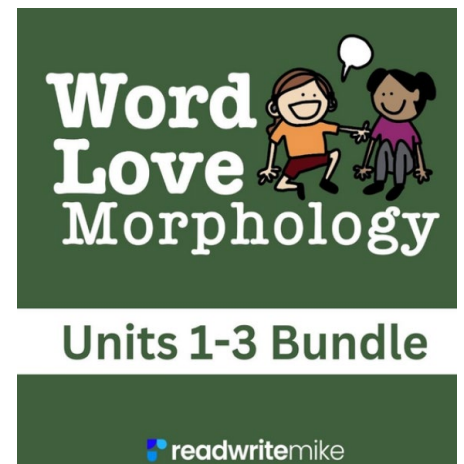
- English Morphology

- Open to all classes Gr. 3-5
- Total Educators = 43



Grade 3

Grades 4 & 5

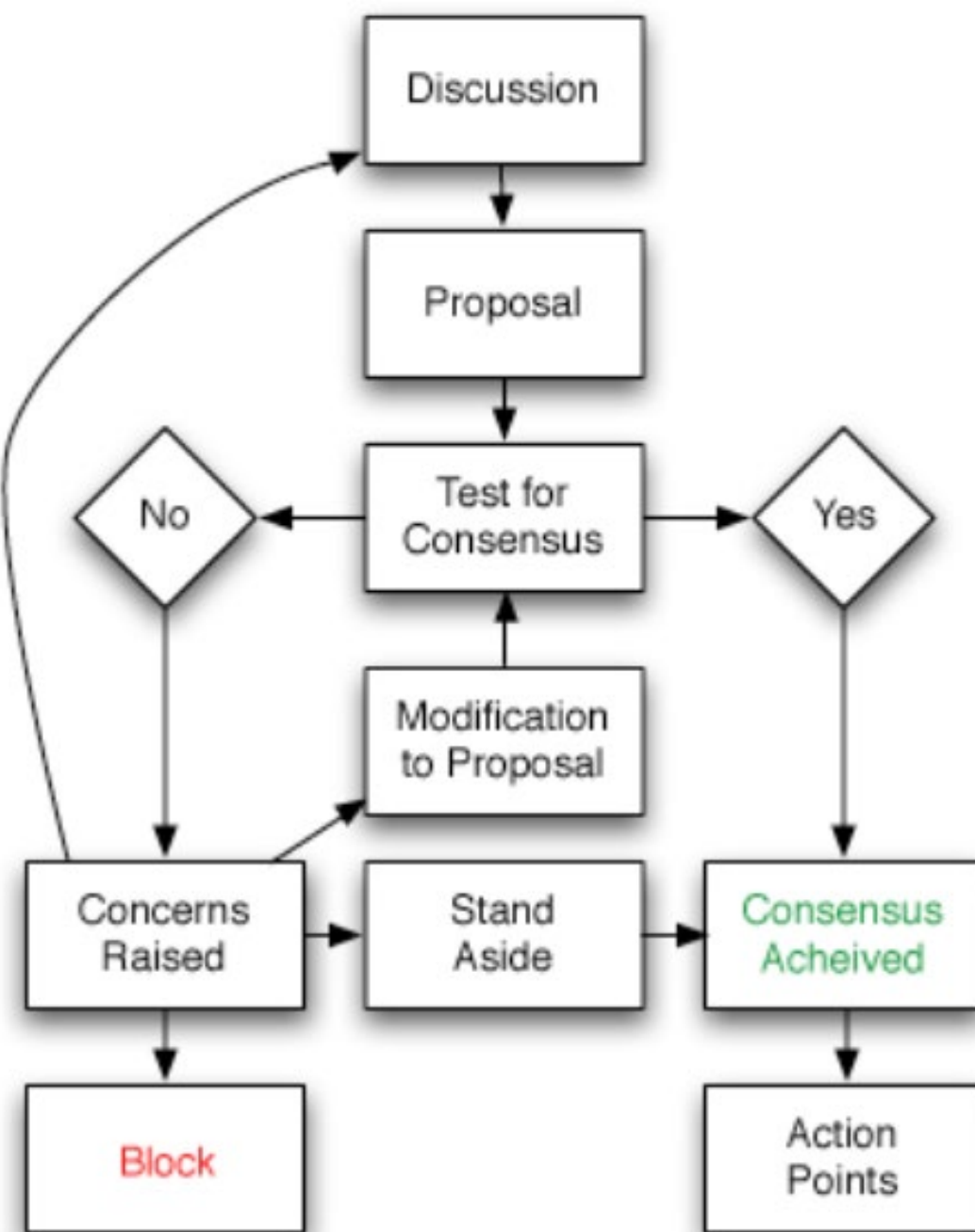


Grades 3 - 5

Let's Review our Consensus Process!

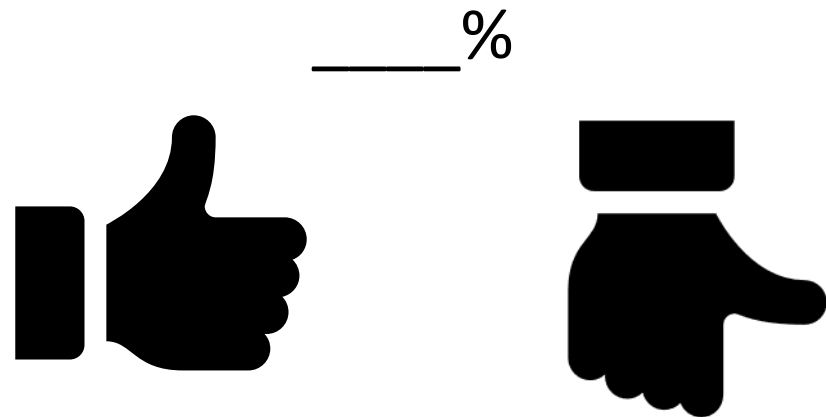
Consensus is a shared decision-making process focused on **finding agreement** in a group. It's a commitment to identifying ideas, solutions, next-steps that **everyone can support publicly**. It is not about votes or "majority rules".

The committee comes to a consensus and publicly supports the curriculum recommendation.

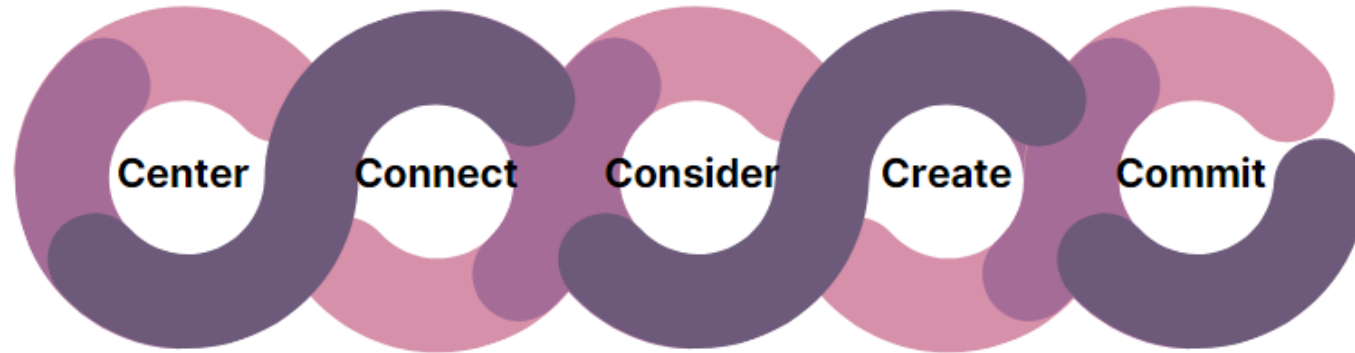


A consensus decision means...

- I can live with the decision.
- I will support my colleagues in implementing this decision.
- I will do absolutely nothing to impede the implementation of the decision.
- What is our minimum percentage of agreement to reach consensus?



Equity-Driven Decision-Making (EDDM)



Questions to Discuss and Document:

- 1. Who are all the stakeholders impacted (directly and indirectly) by the work?*
- 2. Which student groups (e.g., racial/ethnic, students with disabilities, English language learners) are most affected by this?*
- 3. Consider the scope and impact of decision being made as well as the constraints (or limitations) of the project, and match levels of engagement accordingly. The broader or deeper the impact of the decision, especially for people who have historically been marginalized by our system, the higher the level of engagement should be for impacted groups. When in doubt, default to a higher degree of engagement (consulting or partnering) (see the EDDM Spectrum of Community Engagement)*

What would help you make an informed decision?

2. The morphology lessons helped me learn more about words. This might include learning new vocabulary, prefixes, suffixes, or how to figure out the meaning of words. [4]

Yes

No

3. I give the morphology lesson the following ranking. (5 stars means great!) [4]

☆ ☆ ☆ ☆ ☆

4. Would you recommend that other classes use these morphology lessons? [4]

Yes

No

Morphology

Families/Guardians and Community Members

Draft Surveys

Grade 3: Morphemes for Little Ones

<https://forms.office.com/r/beye7AfesW>



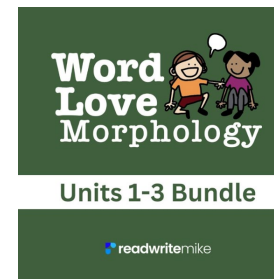
Grades 4-5: Morpheme Magic

<https://forms.office.com/r/ea5wtfrvxS>



Grades 3-5: Word Love Morphology

<https://forms.office.com/r/kfUebBSF5H>



Morphology Student Surveys

Draft Surveys

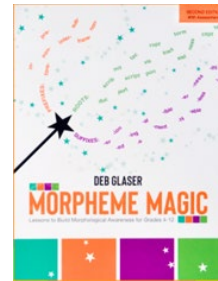
Grade 3: Morphemes for Little Ones

<https://forms.office.com/r/e8ZAWbmghq>



Grades 4-5: Morpheme Magic

<https://forms.office.com/r/Mys1qUnTGr>



Grades 3-5: Word Love Morphology

<https://forms.office.com/r/RPCHkvbmj7>

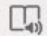


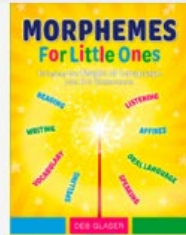
Morphology Educator Survey

Draft Survey

Educator Survey

<https://forms.office.com/r/w6CVKMPEKa>

4. Which morphology resource(s) do you recommend for adoption? 



Morphemes for Little Ones
(3rd grade)



Morpheme Magic (4th-5th
grade)



Word Love: Morphology
(3rd-5th grade)

Other

Spanish Phonics Surveys

Draft Surveys



Next Steps



Adoption Process:

- Winter Instructional Materials Committee:
 - Submit by 01.30.25
 - Present to IMC 02.06.25
- School Board Meeting: 05.22.25

Adoption Committee Meetings:

- November 4, 2024 – 3:45-4:45 p.m.
- December 9, 2024 – 3:45-4:45 p.m.
- January 13, 2025 – 3:45-4:45 p.m.



Thank
you

