



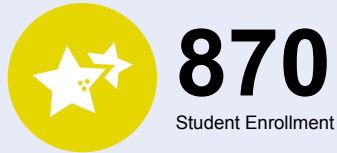
OREGON AT-A-GLANCE SCHOOL PROFILE

International School of Beaverton

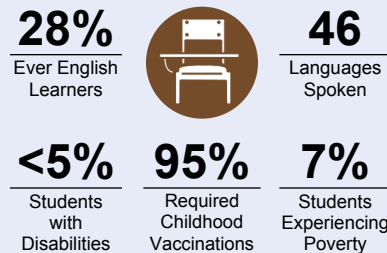
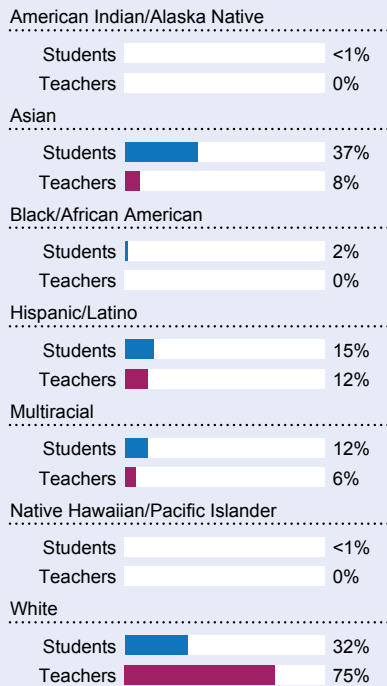


PRINCIPAL: Andrew Gilford | GRADES: 6-12 | 17770 SW Blanton St, Beaverton 97078 | 503-356-3690

Students We Serve



DEMOGRAPHICS

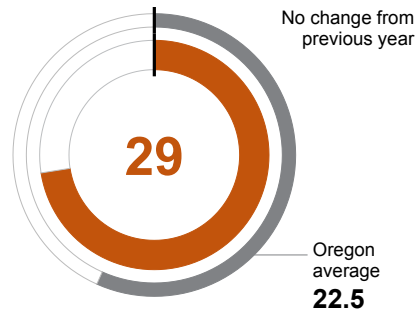


*<10 students or data unavailable

School Environment

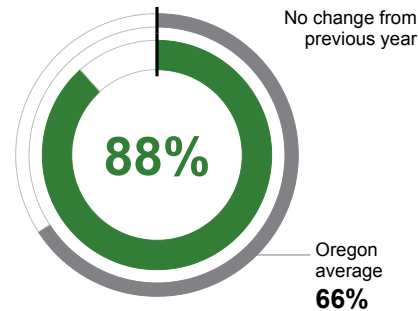
CLASS SIZE

Median size of classes in core subjects.



REGULAR ATTENDERS

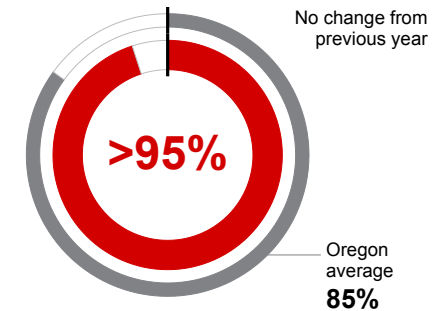
Students who attended more than 90% of their enrolled school days.



Academic Progress

ON-TRACK TO GRADUATE

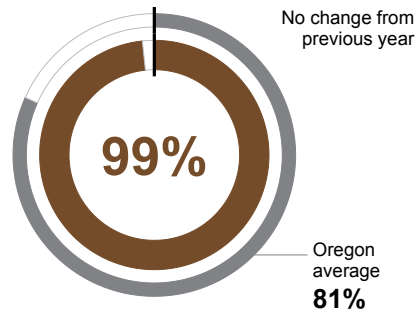
Students earning one-quarter of graduation credits in their 9th grade year.



Academic Success

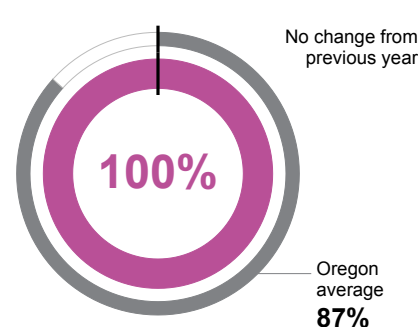
ON-TIME GRADUATION

Students earning a diploma within four years. Cohort includes students who were first-time ninth graders in 2019-20 graduating in 2022-23.



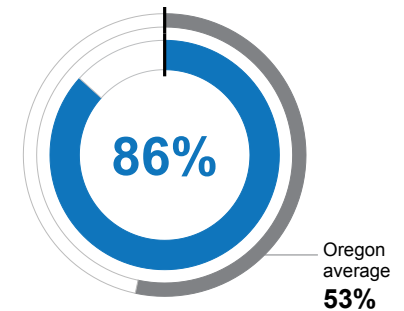
FIVE-YEAR COMPLETION

Students earning a high school diploma or GED within five years. Cohort includes students who were first-time ninth graders in 2018-19 finishing in 2022-23.



COLLEGE GOING

Students enrolling in a two or four year college within 12 months of completing high school in 2021-22. Data from the National Student Clearinghouse.



School Goals

Beaverton School District promotes a deep sense of belonging while supporting, challenging and inspiring all students to explore their passions, achieve their goals and graduate ready to thrive in their learning and life after high school. To achieve these goals, the district and its schools will prioritize student safety and well-being, a strong start in early learning, achievement for all student groups including accessibility to dual language programs, and supports for post-high school success.

State Goals

The Oregon Department of Education is collaborating with school districts and communities across the state to achieve a 90% on-time graduation rate by 2027. Grounded in the pillars of Academic Excellence, Belonging and Wellness, and Reimagined Accountability, ODE prioritizes evidence-based practices to boost early literacy, attendance, and student engagement. We are committed to closing opportunity and achievement gaps for marginalized students and securing long-term success for all of Oregon's learners by investing in culturally responsive practices, fostering inclusive environments and always driving for continuous improvement.

Safe & Welcoming Environment

To enable every student to thrive socially and emotionally, Beaverton School District is committed to promoting an environment where every student feels safe, included and valued. To achieve this goal, the district and its schools will create systems, structures and practices that build safe and inclusive learning environments including multi-tiered systems of support for students's social-emotional, behavioral and academic needs.



OREGON AT-A-GLANCE SCHOOL PROFILE CONTINUED

International School of Beaverton

Outcomes

Our Staff (rounded FTE)



41

Teachers



3

Educational assistants



5

Counselors/ Psychologists/ Social Workers



87%

Average teacher retention rate over the past three years



87%

% of licensed teachers with more than 3 years of experience



Yes

Same principal in the last 3 years

REGULAR ATTENDERS

Table with 3 columns: Student Group, Percentage, and Data Availability. Rows include American Indian/Alaska Native, Asian, Black/African American, Hispanic/Latino, Multiracial, Native Hawaiian/Pacific Islander, White, Students Experiencing Poverty, Ever English Learner, Students with Disabilities, Migrant, Homeless, Students in Foster Care, Military Connected, Talented and Gifted, Female, Male, and Non-Binary.

ON-TRACK TO GRADUATE

Table with 3 columns: Student Group, Percentage, and Data Availability. Rows include American Indian/Alaska Native, Asian, Black/African American, Hispanic/Latino, Multiracial, Native Hawaiian/Pacific Islander, White, Students Experiencing Poverty, Ever English Learner, Students with Disabilities, Migrant, Homeless, Students in Foster Care, Military Connected, Talented and Gifted, Female, Male, and Non-Binary.

ON-TIME GRADUATION

Table with 3 columns: Student Group, Percentage, and Data Availability. Rows include American Indian/Alaska Native, Asian, Black/African American, Hispanic/Latino, Multiracial, Native Hawaiian/Pacific Islander, White, Students Experiencing Poverty, Ever English Learner, Students with Disabilities, Migrant, Homeless, Students in Foster Care, Military Connected, Talented and Gifted, Female, Male, and Non-Binary.

About Our School

ADVANCED COURSEWORK

Beaverton School District values academic excellence. The district and its schools will challenge each student with rigorous, relevant and standards-based learning experiences. We will provide quality feedback to each student that cultivates critical thinking, curiosity, engagement and growth. Together, we will help students envision and prepare for their future success. For specific course guides, please visit the school website.

CAREER & TECHNICAL EDUCATION

Beaverton School District is committed to optimizing program offerings that are responsive to our community. This effort includes modernizing classrooms to ensure an equal technology experience at all schools, expanding equitable access to Career Technical Education programs, and utilizing data to inform and support equitable opportunities, access and inclusion for our diverse student body. For specific course guides, please visit the school website.

EXTRACURRICULAR ACTIVITIES

Please visit the school website for up to date information about extracurricular activities.

PARENT & COMMUNITY ENGAGEMENT

Beaverton School District values belonging. The district and its schools centers equity in our relationships, actions, systems and outcomes. We honor the dignity and voices of our students, families, staff and community members. Individual identities are visible, valued, nurtured and celebrated. We will build on the experiences and strengths of our students, families, staff and community members to connect with our local and global communities. We will show care for and commitment to our community through gratitude and service.