

Community of Multilingual Families Meeting

Comunidad de Familias Multilingües

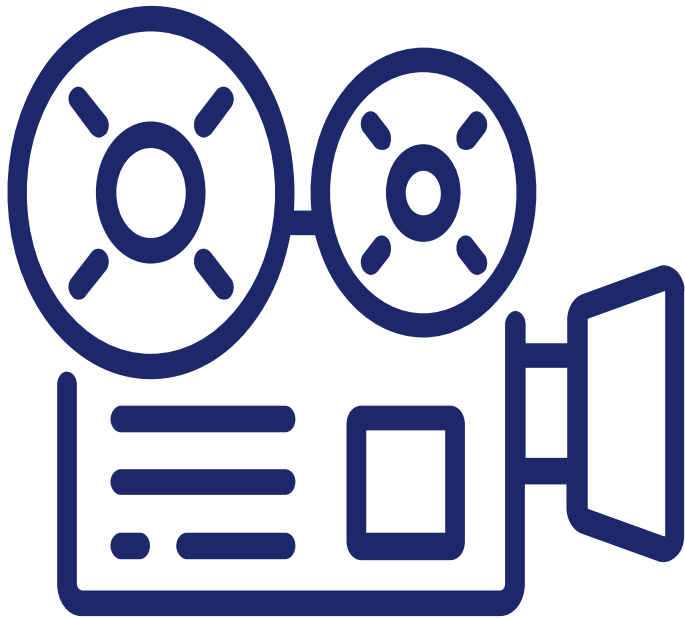
Cộng đồng gia đình đa ngôn ngữ

مجتمع العائلات متعددة اللغات

11.13.24

Event Recording Notice

Aviso de grabación del evento



Webinar Recording

Grabación del seminario web

.....

- This virtual event will be recorded and may be published for public viewing on the LESD website(s) and YouTube channel
- Este evento virtual se grabará y se puede publicar para que el público lo vea en los sitios web de LESD y en el canal de YouTube

If you don't wish to be recorded

Si no desea ser grabado

.....

- Participants can turn off their camera and rename themselves (optional)
- Los participantes pueden apagar su cámara y cambiar su nombre (opcional)

Interpretation

Interpretación

Two languages available

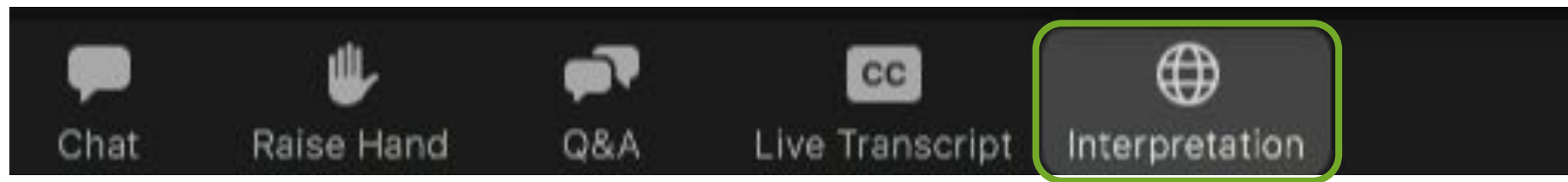
Dos idiomas disponibles

- English
- Español

Selecting a language

Selección de un idioma

- Please click on the globe icon and select the language of your choice
- Haga clic en el icono del globo terráqueo y seleccione el idioma de su elección



2024-2026 Leadership



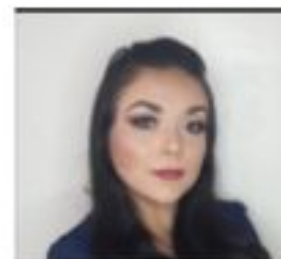
President
Lydia Castro

Vice President
Gianina Trujillo

Secretary
Lissa Martinez



Tania Yamakawa,

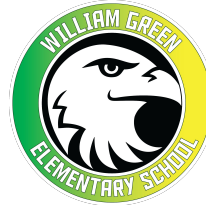
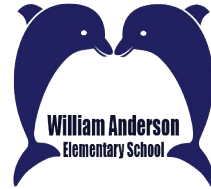


Maria Aguilera Paredes

name

nombre

school and
grade of
children



Billy Mitchell
Elementary School



Lucille Smith Elementary School

escuela y
grado de los
niños

How do you explain
Community of
Multilingual Families
to your friends?

¿Cómo les explicas
Comunidad de
Familias Multilingües a
tus amigos?

Agenda

Follow ups

- Homework
 - How did you share the new name of our group?
 - How did you share your elevator speech?
 - What questions did you ask at parent/teacher conferences?
 - What revisions do you have for the LESD Vision and Mission statements for multilingual learners?
 - Did you attend the October 17th board meeting? Did you request interpretation? What did you learn?
 - What are your ELAC dates for the year?

New Information

- How are our multilingual students with IEPs supported in learning English and progressing towards reclassification?

Next Steps

Homework

- How did you share the new name of our group?
- How did you share your elevator speech?
- What questions did you ask at parent/teacher conferences?



Billy Mitchell
Elementary School

WHAT IS ... QUE ES ... LA GI ...
ما هو..

ELAC

@MITCHELL.AVIATORS

ELAC IS ...

THE ENGLISH LEARNER ADVISORY COMMITTEE (ELAC) IS
A PARENT COMMITTEE AT BILLY MITCHELL THAT
ADVOCATES FOR THE DIVERSE NEEDS OF OUR STUDENTS
WHO ARE EMERGENT BILINGUALS.

EL COMITE ASESOR DE ESTUDIANTES DE INGLES
(ELAC) ES UN COMITE DE PADRES EN LA ESCUELA
BILLY MITCHELL QUE ABOGAN POR LAS DIVERSAS
NECESIDADES DE NUESTROS ESTUDIANTES QUE SON
BILINGUES EMERGENTES.



AM THE PRESIDENT



Mitchell's ELAC Promo

Homework

- What revisions do you have for the LESD Vision and Mission statements for multilingual learners?



Vision

At LESD, we celebrate the linguistic and cultural strengths of our English learners. Our language development program ensures that all students have equitable access to rigorous content while fostering bilingualism, biliteracy, and academic success. By integrating students' languages and cultures into instruction, we create a supportive, inclusive environment where every learner can thrive.

Mission

Our mission is to provide English learners with high-quality instruction that builds on their linguistic and cultural assets. Through targeted language support, culturally responsive teaching, and collaborative practices, we equip students with the skills needed to access academic content, achieve success across all subject areas, and thrive as active participants in our diverse school community and beyond.

Visión

En LESD, celebramos las fortalezas lingüísticas y culturales de nuestros estudiantes de inglés. Nuestro programa de desarrollo del lenguaje garantiza que todos los estudiantes tengan acceso equitativo a contenido riguroso y al mismo tiempo fomenta el bilingüismo, la alfabetización bilingüe y el éxito académico. Al integrar los idiomas y las culturas de los estudiantes en la instrucción, creamos un entorno inclusivo y de apoyo donde cada alumno puede prosperar.

Misión


Nuestra misión es brindar a los estudiantes de inglés una instrucción de alta calidad que se base en sus activos lingüísticos y culturales. A través de apoyo lingüístico específico, enseñanza culturalmente receptiva y prácticas colaborativas, equipamos a los estudiantes con las habilidades necesarias para acceder al contenido académico, lograr el éxito en todas las áreas temáticas y prosperar como participantes activos en nuestra diversa comunidad escolar y más allá.

Homework

- What are your ELAC meeting dates for the year?

ELAC/DELAC Meeting Dates

	DELAC (9:00 am)	Addams	Anderson	FDR	Green	Mitchell	Rogers	Smith	Twain
October	9th	10/16	10/3		10/2	10/16		10/24	10/2
November	13th	11/20	11/21				11/18		11/6
December		12/18				12/11			12/4
January	15th	1/22	1/23		1/09	1/22	1/27		1/8
February	12th								2/5
March		3/19	3/6						
April	16th	4/23			4/10	4/23	4/14		4/9
May	14th, 28th	5/21					5/19		5/7
June					6/05				



How are our multilingual students with IEPs supported in learning English and progressing towards reclassification?

¿Cómo se apoya a nuestros estudiantes multilingües con IEP para que aprendan inglés y progresen hacia la reclasificación?

Let's Review Reclassification Criteria

- 1. ELPAC or Alternate ELPAC score**
- 2. Teacher Recommendation**
- 3. Comparison of Performance in Basic Skills**
- 4. Parent Consultation**

#1: Summative ELPAC Score

**General Education
Pathway**

Score of **4** on the
Summative ELPAC

**Special Education
Pathway #1
Learning Center**

Score of **4** on the
Summative ELPAC

**Special Education
Pathway #2
Special Day Class**

Score of **3** on the
Alternate Summative
ELPAC

A Parent Guide to Understanding The Summative English Language Proficiency Assessments for California (ELPAC)

We know that your child brings many strengths with them to school, and also may need extra support in the classroom.

Who takes this test?

Students identified as English learners will take the Summative ELPAC until they are reclassified as proficient in English.



Why do students take this test?

The Summative ELPAC measures how much progress your child is making in listening, speaking, reading, and writing in English. This test will give you and your child's teacher information about where they may need extra support.

When do students take this test?

Students take the Summative ELPAC every spring until they are fluent in English and no longer need additional support. You will receive additional information from your child's school about the specific dates and times of testing.

How do students take this test?

For most students, the test is taken on a computer. For students in kindergarten through grade 2, the Writing part of the test is taken with paper and pencil format. Students take the Listening, Reading, and Writing parts of the test in small groups and the Speaking part of the test one-on-one with a test examiner. Students in kindergarten and grade 1 take the whole test one-on-one with a test examiner.

What resources are available?

Your child will have access to resources they need when taking the test, like a highlighter, notepad, or scratch paper. These resources will help your child access the test and do not affect their scores in any way. You can talk to your child's teacher about other available resources that may help your child.

How can I help my child?

- Remind your child that you and their teacher want them to try their best and that you are there to help them every step of the way.
- Visit the Starting Smarter website at <https://elpac.startingsmarter.org> to better understand Student Score Reports, review sample questions, and access resources to support your child's learning.
- Take a practice test with your child on the ELPAC Online Practice and Training Tests web page at <https://www.elpac.org/resources/online-practice-and-training-test/>.

For more information about your child's scores, contact your child's teacher and/or the school office.



July 2024

UNA GUÍA DE COMPRENSIÓN PARA PADRES Evaluaciones Sumativas de Dominio del Idioma Inglés para California (ELPAC, por sus siglas en inglés)

Sabemos que su hijo/a trae muchos puntos fuertes a la escuela y también puede necesitar apoyo extra en el aula.

¿Quiénes realizan esta prueba?

Los estudiantes identificados como aprendices de inglés realizarán la ELPAC Sumativa hasta que sean reclasificados como competentes en inglés.



¿Por qué los estudiantes realizan esta prueba?

La ELPAC sumativa mide el progreso de su hijo/a en comprensión auditiva, expresión oral, lectura y escritura y redacción en inglés. Esta prueba le brindará información a usted y al docente de su hijo/a sobre las áreas en las que su hijo/a puede necesitar apoyo adicional.

¿Cuándo realizan los estudiantes esta prueba?

Los estudiantes realizan la ELPAC Sumativa cada primavera hasta que tengan fluidez en inglés y ya no necesiten apoyo adicional. La escuela de su hijo le proporcionará información adicional sobre las fechas y horarios específicos de los exámenes.

¿Cómo realizan los estudiantes esta prueba?

Para la mayoría de los estudiantes, la prueba se realiza en una computadora. Para los estudiantes de jardín de infancia hasta 2° grado, la parte de Escritura de la prueba se realiza en formato de lápiz y papel. Los estudiantes realizan las partes de la prueba de comprensión auditiva, lectura y escritura en pequeños grupos y la parte de producción oral en forma individual con un examinador de prueba. Los estudiantes de jardín de infancia y 1° grado realiza toda la prueba en forma individual con un examinador de prueba.

¿Qué recursos están disponibles?

Su hijo/a tendrá acceso a los recursos necesarios cuando realice la prueba, como un resaltador, anotador o papel borrador. Estos recursos ayudan a su hijo/a a acceder al examen y de ningún modo afectan sus puntuaciones. Puede hablar con el docente de su hijo/a sobre otros recursos disponibles que puedan ser de utilidad.

¿Cómo puedo ayudar a mi hijo/a?

- Recuérdele a su hijo/a que usted y su maestro/a quieren que se esfuerce al máximo y que están ahí para ayudarlo en cada paso.
- Visite el sitio web de Starting Smarter en <https://elpac.startingsmarter.org> para comprender mejor los informes de calificaciones de los estudiantes, revisar las preguntas de práctica y acceder a recursos para apoyar el aprendizaje de su hijo/a.
- Realice un examen de práctica con su hijo/a en <https://www.elpac.org/resources/online-practice-and-training-test/>.

Para obtener más información sobre los resultados de su hijo/a, póngase en contacto con su maestro/a y/o la oficina escolar.



Julio de 2024

A Parent Guide to Understanding The Alternate English Language Proficiency Assessments for California (Alternate ELPAC)

We know that students who are multilingual learners bring many assets with them to the classroom. We also know that sometimes these students need supports in the classroom so they can do well in English language arts, math, science, history, and other subject areas.

Who takes these tests?

Students who have the most significant cognitive disabilities and are, or might be, English learner students are eligible to take the Alternate ELPAC. The Initial Alternate ELPAC is given to students with a primary language other than English. The Summative Alternate ELPAC is given to all English learner students.



Why do students take these tests?

The Alternate ELPAC is the test we use to measure how well students understand English when it is not the language they speak at home. Students are tested on their receptive skills of reading and listening, and their expressive skills of writing and speaking, which will give information to your child's teacher about the areas where your child needs extra support.

When do students take these tests?

The Initial Alternate ELPAC is given to students only once, within 30 days of enrollment in a California school. If they are classified as an English learner student, the Summative Alternate ELPAC is given every spring until students are reclassified as proficient in English. You will receive additional information from your school about the specific dates and times of testing.

How do students take these tests?

These tests are untimed, taken on a computer, and are administered one-on-one with a test examiner who is familiar with the student and their needs. Your child may use sign language, eye gaze, pointing, gestures, alternative communication devices, or other alternate modes to comprehend and express information.

What resources are available?

Your child will have access to resources they need when taking the test. In addition to those listed in their active individualized education program, students may use other instructional or physical resources. You can talk to your child's teacher about other available resources that may help your child.

How can I help my child?

- Remind your child that you and their teacher want them to try their best and that you are there to help them every step of the way.
- Visit the Starting Smarter website at <https://ca.startingsmarter.org> to better understand Student Score Reports, review sample questions, and access resources to support your child's learning.
- Take a practice test with your child at on the ELPAC Online Practice and Training Tests web page at <https://www.elpac.org/resources/online-practice-and-training-test/>.

For more information about your child's scores, contact your child's teacher and/or the school office.



July 2024

UNA GUÍA DE COMPRENSIÓN PARA PADRES Evaluaciones Alternativas de Dominio del Idioma Inglés para California (Alternate ELPAC, por sus siglas en inglés)

Sabemos que los estudiantes que aprenden varios idiomas traen muchas ventajas al salón. También sabemos que en ocasiones estos estudiantes necesitan un apoyo en el salón para poder tener un buen rendimiento en artes de lenguaje y literatura inglesa, matemáticas, ciencias, historia y otras materias.

¿Quiénes realizan estas pruebas?

Los estudiantes que tienen las discapacidades cognitivas más significativas y son, o podrían ser, estudiantes aprendices de inglés son elegibles para realizar la ELPAC Alterna. La ELPAC alternativa inicial la realizan los estudiantes cuyo idioma natal no sea el inglés. La ELPAC alternativa sumativa la realizan todos los estudiantes aprendices de inglés.



¿Por qué los estudiantes realizan estas pruebas?

La ELPAC alternativa es la prueba que utilizamos para medir cuán bien comprenden los estudiantes el inglés cuando no es el idioma que hablan en casa. A los estudiantes se los evalúa en sus habilidades receptoras de lectura y comprensión auditiva y sus habilidades expresivas de escritura y expresión oral, lo que dará información al docente sobre las áreas en las que su hijo/a necesita apoyo extra.

¿Cuándo realizan los estudiantes estas pruebas?

La ELPAC alternativa inicial se realiza solo una vez, dentro de un plazo de 30 días desde la inscripción en una escuela de California. Si son clasificados como estudiantes aprendices de inglés, realizarán la ELPAC alternativa sumativa cada primavera hasta que sean reclasificados como competentes en inglés. Su escuela le proporcionará información adicional sobre las fechas y horarios específicos de los exámenes.

¿Cómo realizan los estudiantes estas pruebas?

Estas pruebas se realizan en una computadora, sin límite de tiempo, y son administradas en forma individual por un examinador que conoce al estudiante y sus necesidades. Su hijo/a puede usar lengua de señas, miradas, señalar con el dedo, gestos o dispositivos de comunicación alternativa u otros modos alternos para comprender y expresar información.

¿Qué recursos están disponibles?

Su hijo/a tendrá acceso a los recursos necesarios cuando realice la prueba. Además de los enumerados en su programa de educación individualizada (IEP) activo, los estudiantes podrán usar otros recursos educativos o físicos. Puede hablar con el docente de su hijo/a sobre otros recursos disponibles que puedan ser de utilidad.

¿Cómo puedo ayudar a mi hijo/a?

- Recuérdle a su hijo/a que usted y su maestro/a quieren que se esfuerce al máximo y que están ahí para ayudarlo en cada paso.
- Visite el sitio web de Starting Smarter en <https://ca.startingsmarter.org> para comprender mejor los informes de calificaciones de los estudiantes, revisar las preguntas de práctica y acceder a recursos para apoyar el aprendizaje de su hijo/a.
- Realice un examen de práctica con su hijo/a en <https://www.elpac.org/resources/online-practice-and-training-test/>.

Para obtener más información sobre las calificaciones de su hijo/a, póngase en contacto con su maestro/a y/o la oficina escolar.



Julio de 2022

#2: Teacher Evaluation of Student Academic Performance

General Education Pathway

- English Language Arts grade

Special Education Pathway #1 Learning Center

- Classroom performance
 - English Language Arts Grade
- and/or
- District-wide ELA assessments
- Progress toward IEP Goals for English Language Arts
- Formative Assessments in English Language Arts
- ELA Intervention Data



#3: Comparison of Performance in Basic Skills

General Education Pathway

K-2

Meeting or exceeding standards on **Benchmark Unit assessment**

OR

At/Above grade level on **iReady**

3-5

Meeting or exceeding standards on **Benchmark Unit assessment**

OR

At/Above grade level on

iReady

OR

Upper 2 quartiles of Standard Nearly Met on **SBAC**

6-8

At/Adjacent level on **iReady** reading

OR

Upper 2 quartiles of Standard Nearly Met on **SBAC**

Special Education Pathway #1 Learning Center

- Same as General Education Pathway

And/or

- Basic skills assessment scores reflect individual student growth commensurate with students' ability
- Testing Error patterns noted mirror the patterns of errors made by students with the same disability versus a language difference
- Student has received ELD services for more than three years and academic progress in ELA basic skills is commensurate with that of peers who manifest similar disabilities who are not English learners

Special Education Pathway #2

Special Day Class

Criterion #1: **Score of 3** on the Alternate Summative ELPAC

Criterion #2: **Teacher Evaluation of Student Academic Performance** based on:

- Classroom performance
- n2y benchmarks assessments
- n2y monthly checkpoints
- Progress toward IEP Goals
- Intervention Data

Criterion #3: **Comparison of Performance in Basic Skills**

- California Alternate Assessment in ELA/Math
- California Alternate Assessment in Science



CAASPP Student Needs Matching Tool



This document helps educators and individualized education program teams choose the accessibility resources for students to use in the classroom and on the California Assessment of Student Performance and Progress (CAASPP) assessments. This document lists only the designated supports and accommodations available. There are additional universal supports available to students that may address some of these student needs. Unless noted in parentheses, the listed resources may be used in all CAASPP assessments: Smarter Balanced assessments for English language arts/literacy (ELA) and mathematics, California Science Test (CAST), California Spanish Assessment (CSA), and California Alternate Assessments (CAAs) for ELA, Mathematics, and Science. For more information, visit the [CAASPP & ELPAC Individual Student Assessment Accessibility Profile \(ISAAP\) Tool website](#).

Support for Executive Functioning: Attention, Cognition Control, and Processing

Designated Supports

- Color contrast
- Color overlay: non-embedded (paper) (Smarter Balanced assessments for ELA and mathematics, CAST)
- Magnification
- Masking
- Mouse pointer
- Noise buffers
- Print size
- Separate setting
- Simplified test directions
- Streamline
- Text-to-speech (Smarter Balanced assessments for ELA and mathematics, CAST, CSA)
- Turn off any universal tool(s)

Accommodations

- Large-print special form (paper)(Smarter Balanced assessments for ELA and mathematics, CAST)
- Print-on-demand
- Word completion (Smarter Balanced assessments for ELA and mathematics, CAST)

Support for Persistent Calculation Disability, Dyscalculia

Designated Supports

- 100s number table: non-embedded (CAST, CAA for Science)
- Calculator: non-embedded (CAST)
- Color contrast
- Color overlay: non-embedded (paper) (Smarter Balanced assessments for ELA and mathematics, CAST)
- Masking
- Multiplication table: non-embedded (CAST, CAA for Science)
- Science charts: non-embedded (CAST)
- Separate setting
- Streamline
- Turn off any universal tool(s)

Accommodations

- 100s number table: non-embedded (Smarter Balanced assessments for mathematics, CAA for Mathematics)
- Calculator: non-embedded (Smarter Balanced assessments for mathematics)
- Large-print special form (paper)(Smarter Balanced assessments for ELA and mathematics, CAST)
- Multiplication table: non-embedded (Smarter Balanced assessments for mathematics, CAA for Mathematics)

The screenshot shows the CAASPP website interface. At the top, there is a search bar and navigation links for System Links, System Status, and Help. Below the navigation bar, there are logos for CAASPP and ELPAC, and a menu with options for Assessments, Resources, Training and Communication, About, and Get Involved. The main heading is "Accessibility Resource Demonstration Videos". Below this, there is a section for "Jump to a section on this page" with links for Introduction, Demonstration Videos in English, and Demonstration Videos in Spanish. The text states: "The following videos provide demonstrations of select universal tools, designated supports, and accommodations allowed as part of the CAASPP and ELPAC." It also provides a link to the "California Assessment Accessibility Resources Matrix". A section titled "Demonstration Videos in English:" lists several video resources with play icons and durations: Calculator—English (02:07), Digital Notepad—English (01:41), English Dictionary—English (02:47), English Glossary—English (02:06), English Thesaurus—English (02:05), and Expandable Items and Passages—English (02:10).

[Accessibility Resource Demonstration Videos](#)

CAASPP Student Needs Matching Tool



This document helps educators and individualized education program teams choose the accessibility resources for students to use in the classroom and on the California Assessment of Student Performance and Progress (CAASPP) assessments. This document lists only the designated supports and accommodations available. There are additional universal supports available to students that may address some of these student needs. Unless noted in parentheses, the listed resources may be used in all CAASPP assessments: Smarter Balanced assessments for English language arts/literacy (ELA) and mathematics, California Science Test (CAST), California Spanish Assessment (CSA), and California Alternate Assessments (CAAs) for ELA, Mathematics, and Science. For more information, visit the [CAASPP & ELPAC Individual Student Assessment Accessibility Profile \(ISAAP\) Tool website](#).

Support for Executive Functioning: Attention, Cognition Control, and Processing

Designated Supports

- Color contrast
- Color overlay: non-embedded (paper) (Smarter Balanced assessments for ELA and mathematics, CAST)
- Magnification
- Masking
- Mouse pointer
- Noise buffers
- Print size
- Separate setting
- Simplified test directions
- Streamline
- Text-to-speech (Smarter Balanced assessments for ELA and mathematics, CAST, CSA)
- Turn off any universal tool(s)

Accommodations

- Large-print special form (paper)(Smarter Balanced assessments for ELA and mathematics, CAST)
- Print-on-demand
- Word completion (Smarter Balanced assessments for ELA and mathematics, CAST)

Support for Persistent Calculation Disability, Dyscalculia

Designated Supports

- 100s number table: non-embedded (CAST, CAA for Science)
- Calculator: non-embedded (CAST)
- Color contrast
- Color overlay: non-embedded (paper) (Smarter Balanced assessments for ELA and mathematics, CAST)
- Masking
- Multiplication table: non-embedded (CAST, CAA for Science)
- Science charts: non-embedded (CAST)
- Separate setting
- Streamline
- Turn off any universal tool(s)

Accommodations

- 100s number table: non-embedded (Smarter Balanced assessments for mathematics, CAA for Mathematics)
- Calculator: non-embedded (Smarter Balanced assessments for mathematics)
- Large-print special form (paper)(Smarter Balanced assessments for ELA and mathematics, CAST)
- Multiplication table: non-embedded (Smarter Balanced assessments for mathematics, CAA for Mathematics)

[Color contrast - Español](#)

[Color contrast - English](#)

Support for Reading-Related Disabilities, Print Disabilities, Struggling Readers

Designated Supports

- 100s number table: non-embedded (CAST, CAA for Science)
- Color contrast
- Color overlay: non-embedded (paper)(Smarter Balanced assessments for ELA and mathematics, CAST)
- Masking
- Print size
- Printed test directions in English (Smarter Balanced assessments for ELA and mathematics)
- Read aloud: non-embedded (items)
- Science charts: non-embedded (CAST)
- Separate setting
- Streamline
- Text-to-speech (items) (Smarter Balanced assessments for ELA and mathematics, CAST, CSA)
- Translated test directions in American Sign Language (Smarter Balanced assessments for ELA and mathematics)
- Translations (Spanish stacked–dual language) and translated test directions (Smarter Balanced assessments for mathematics, CAST)
- Turn off any universal tool(s)

Accommodations

- 100s number table (Smarter Balanced assessments for mathematics)
- Print-on-demand
- Text-to-speech (passages and items)(Smarter Balanced assessments for ELA, CSA)

Support for Students Needing Access in Language(s) of Translation

Designated Supports

- Bilingual dictionary: non-embedded (Smarter Balanced assessments for ELA)
- Printed test directions in English (Smarter Balanced assessments for ELA and mathematics)
- Read aloud in Spanish (Smarter Balanced assessments for mathematics, CAST)
- Separate setting
- Simplified test directions: non-embedded
- Streamline
- Translated test directions (Smarter Balanced assessments for ELA, mathematics, CAST)
- Translated test directions in American Sign Language (Smarter Balanced assessments for ELA and mathematics)
- Translations (glossary) (Smarter Balanced assessments for mathematics, CAST)
- Translations (Spanish stacked–dual language) and translated test directions (Smarter Balanced assessments for mathematics, CAST)
- Turn off any universal tool(s)

Support for Significant Motor Difficulties and Recent Injury

Designated Supports

- Read aloud (items)
- Read aloud in Spanish (Smarter Balanced assessments for mathematics, CAST)
- Scribe (items)
- Separate setting
- Streamline
- Turn off any universal tool(s)

Accommodations

- Alternate response options: non-embedded
- Read aloud (passages)(Smarter Balanced assessments for ELA, CSA)
- Speech-to-text (Smarter Balanced assessments for ELA and mathematics, CAST)
- Word completion (Smarter Balanced assessments for ELA and mathematics, CAST)

Support for Vision Impairments/Blindness

Designated Supports

- Calculator (CAST)
- Color contrast
- Color overlay (paper) (Smarter Balanced assessments for ELA and mathematics, CAST)
- Magnification
- Masking
- Mouse pointer
- Print size
- Read aloud (items)
- Scribe (items)
- Separate setting
- Streamline
- Text-to-speech (Smarter Balanced assessments for ELA and mathematics, CAST, CSA)
- Turn off any universal tool(s)

Accommodations

- Abacus (Smarter Balanced assessments for mathematics, CAST, CAAs for Mathematics and Science)
- Alternate response options: non-embedded
- Audio transcript (Smarter Balanced assessments for ELA, CSA)
- Braille (Smarter Balanced assessments for ELA and mathematics, CAST, CSA)
- Calculator—grades six through eight and grade eleven (Smarter Balanced assessments for mathematics)
- Large-print special form (Smarter Balanced assessments for ELA and mathematics, CAST)
- Print-on-demand
- Read aloud (passages) (Smarter Balanced assessments for ELA, CAA for ELA, CSA)
- Scribe—full write (Smarter Balanced assessments for ELA, CAA for ELA, CSA)
- Speech-to-text (Smarter Balanced assessments for ELA and mathematics, CAST)
- Text-to-speech (passages)(Smarter Balanced assessments for ELA, CSA)

Support for Hearing Impairments and Deafness

Designated Supports

- Amplification
- Color contrast
- Masking
- Streamline
- Turn off any universal tool(s)

Accommodations

- Alternate response options: non-embedded
- American Sign Language (Smarter Balanced assessments for ELA and mathematics, CAST)
- Audio transcript (Smarter Balanced assessments for ELA, CSA)
- Closed-captioning (Smarter Balanced assessments for ELA, CSA)

Support for Health Monitoring

Designated Supports

- Color contrast
- Masking
- Medical supports
- Streamline

Accommodations

- Alternate response options: non-embedded
- American Sign Language (Smarter Balanced assessments for ELA and mathematics, CAST)
- Audio transcript (Smarter Balanced assessments for ELA, CSA)
- Closed-captioning (Smarter Balanced assessments for ELA, CSA)



CALIFORNIA ASSOCIATION FOR BILINGUAL EDUCATION

CABE 50th 2025

ANNIVERSARY

Honoring Our Past, Embracing Our Future: 50 Years of Bilingual Advocacy & Excellence

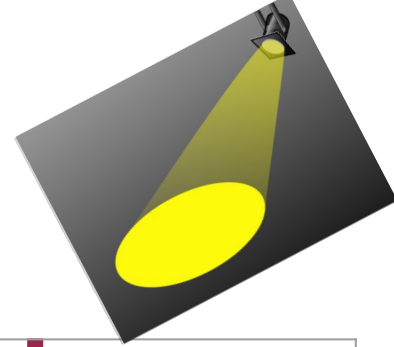
March 26-29, 2025 | Long Beach Convention Center

ATTENDEE ONLINE REGISTRATION



It's time to register! Talk with your principal about bringing a team of parents!

Upcoming Board meetings



Date	Presentation(s)	School Spotlight
November 21, 2024	Nutrition & Wellness	Twain
January 23, 2025	PKTK/K - TK-3 Framework Language Development	Carson
February 6, 2025	LCAP Mid-year review and iReady data	Green
February 20, 2025	MTSS and Restorative Practices (PBIS)	FDR

Board Meetings & Agendas

Effective September 5, 2024, Board meetings will begin at 5:00 PM.

The Lawndale Elementary School District Governing Board encourages community members to attend School Board meetings and welcomes views on pertinent subjects. Our community has the opportunity to participate in the Board meetings virtually by streaming live through the LESD YouTube or in person at the district office.

STREAMING LIVE

YouTube: Participants who do not wish to speak or access Spanish interpretation may view and listen to the meeting of the Board of Trustees live on the [LESD YouTube Channel here](#). Login and password are not necessary.

Interpretation

Spanish interpretation is accessible through Zoom. To ensure interpretation, please complete the [Google form here](#).

[Click here to view LIVE on YouTube](#)

[CLICK HERE TO VIEW THE BOARD AGENDAS](#)

Meeting Dates

Meetings are held on the *first and third* Thursdays of the month at **5:00 p.m.** in the Board Room of the Lawndale Elementary School District

Reuniones del Consejo y órdenes del día

A partir del 5 de septiembre de 2024, las reuniones del Consejo comenzarán a las 17:00 horas.

La Junta Directiva del Distrito Escolar Primario de Lawndale alienta a los miembros de la comunidad a asistir a las reuniones de la Junta Escolar y da la bienvenida a las opiniones sobre temas pertinentes. Nuestra comunidad tiene la oportunidad de participar en las reuniones de la Junta virtualmente transmitiendo en vivo a través de YouTube del LESD o en persona en la oficina del distrito.

TRANSMISIÓN EN VIVO

YouTube: Los participantes que no deseen hablar o acceder a la interpretación en español pueden ver y escuchar la reunión de la Junta Directiva en vivo en el [canal de YouTube de LESD aquí](#). El nombre de usuario y la contraseña no son necesarios.

Interpretación

Se puede acceder a la interpretación en español a través de Zoom. Para asegurar la interpretación, por favor complete el [formulario Google aquí](#).

[Haga clic aquí para verlo](#)
EN DIRECTO en YouTube

PULSE AQUÍ PARA
CONSULTAR LOS ÓRDENES
DEL DÍA DEL CONSEJO

Fechas de las reuniones

Las reuniones se celebran el *primer y tercer* jueves de cada mes a las 5:00

NOTICE OF CHANGE OF INTERPRETATION SERVICE FOR REGULAR BOARD OF TRUSTEES MEETINGS

Liliana Martinez

Nov 8 2024 4:03 PM

Notice is hereby given that the process for requesting interpretation during the Regular Meetings of the Board of Trustees of the Lawndale Elementary School District will be changed, **effective January 1, 2025.**

We ask that participants who require translation assistance, to please complete the [Interpretation and Public Comment Form](#) at least 72 hours prior to the board meeting. Any requests submitted after this time frame may not be accommodated.

Future meeting dates can be found on our [District website](#). Meetings will continue to be held in the District Board Room, located at 4161 W 147th St.,

Lawndale, California 90260, and online.



English

NOTIFICACIÓN DE CAMBIO DEL SERVICIO DE INTERPRETACIÓN PARA LAS REUNIONES ORDINARIAS DEL CONSEJO DE ADMINISTRACIÓN

Liliana Martínez

Noviembre 8 2024 16:03

Por la presente se notifica que el proceso para solicitar interpretación durante las Reuniones Ordinarias de la Junta de Síndicos del Distrito Elemental de Lawndale cambiará, **a partir del 1 de enero de 2025.**

Rogamos a los participantes que necesiten asistencia de traducción que cumplimenten el [formulario de interpretación y comentarios del p](#) 72 horas antes de la reunión de la Junta. Las solicitudes presentadas fuera de este plazo no podrán ser atendidas.

Las fechas de futuras reuniones se pueden encontrar en nuestro [sitio web del Distrito](#). Las reuniones seguirán celebrándose en la Sala de J

Suggestions for any parents/volunteers who are speaking through an interpreter

- Address the assembly in **your best language**. If you can best express yourself in Spanish, allow the interpreter to render into English
- If you're *entirely bilingual*, you still may prefer to speak Spanish for two reasons:
 - a. encouragement/recognition for Spanish speakers, and
 - b. the PACE ends up making life easier for the interpreter
- Pace: Whichever language you choose, speak at a natural, even leisurely rate. Remember to breathe.
- Sound quality is EVERYTHING: speak directly into a microphone, as close as you can get. If calling in from home over Zoom, use a headset with built-in microphone for improved results.

Oportunidad de voluntar

Programa de la biblioteca LESD -
Voluntarios

¡Llamamos a todos los amantes de los libros!

- Organizar
- Compañero de lectura
- Decorar
- Feria del libro
- Arte
- Eventos

¿PREGUNTAS?
COMUNÍQUESE CON LA ESPECIALISTA EN MEDIOS DE LA BIBLIOTECA
ERIN_BLADJOHNSON@LAWNDALESD.NET

¡GRACIAS!
¡ESTAMOS ANSIOSOS POR DARLE LA BIENVENIDA A NUESTROS ESPACIOS!
SÍGUENOS EN IG -
@LESD.LECTORES @LESD.LMC

Next meetings

Próximas reuniones

**Special Needs
Family Support
Group
November 19**

DPAC
December 11

AAPAC
December 12

**Community of
Multilingual
Families (DELAC)
January 15**

See you at the next meeting!! | *Nos vemos en la próxima reunión*

Thanks for attending! *¡Gracias por asistir!*

Middle School ELD Adoption

Sample textbooks and teacher materials are on display in the PDC if you would like to take a look!

