

LS PARENT PICK-UP & DROP-OFF LOOP

HOW - TO GUIDE FOR SAFE PICK-UP & DROP-OFF PROCEDURES



Watch video for info on pick up and drop off!

5 STEPS TO SAVE DROP-OFF & PICK-UP

- 1. Drop-Off & Pick-Up Locations**
- 2. Pick-Up Loop- Student Name Placard**
- 3. Pick-Up Loop Procedures**
- 4. Crosswalks**
- 5. Default to safety - kindness & respect**

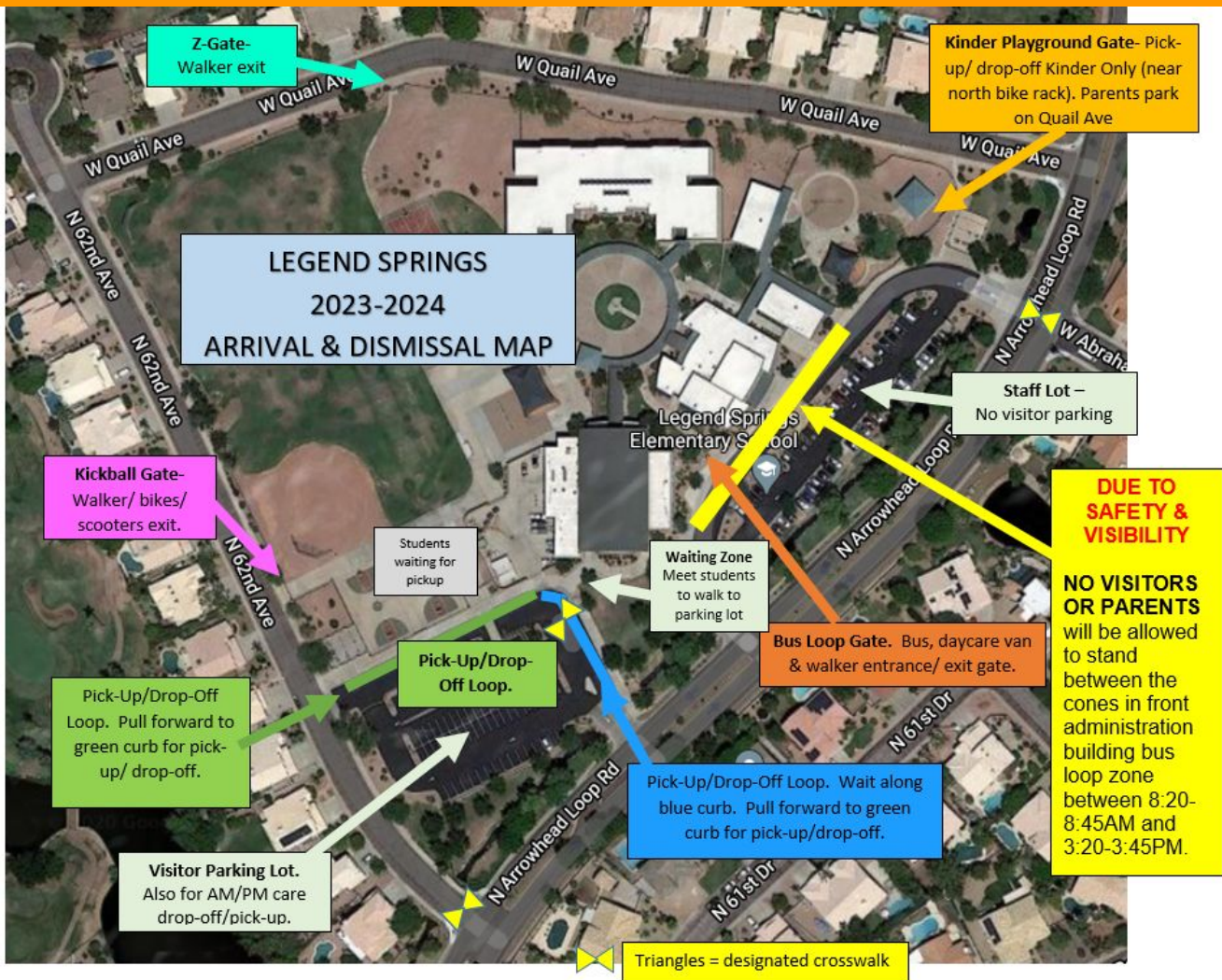
1. Drop-Off & Pick-Up Locations

❑ DROP OFF

- ❑ Drop at designated areas only
- ❑ If parking, use crosswalks
- ❑ Know which gates are open in the morning

❑ PICK UP

- ❑ Plan pick-up location
- ❑ Communicate changes to homeroom teacher
- ❑ Front loop & bus loop walkway remains open (no standing, stopping from 8:20-8:45 or 3:20-3:45)
- ❑ Adhere to rules at each exit



Z-Gate- Walker exit

Kinder Playground Gate- Pick-up/ drop-off Kinder Only (near north bike rack). Parents park on Quail Ave

**LEGEND SPRINGS
2023-2024
ARRIVAL & DISMISSAL MAP**

Kickball Gate- Walker/ bikes/ scooters exit.

Staff Lot – No visitor parking

DUE TO SAFETY & VISIBILITY

NO VISITORS OR PARENTS will be allowed to stand between the cones in front administration building bus loop zone between 8:20-8:45AM and 3:20-3:45PM.

Students waiting for pickup

Waiting Zone Meet students to walk to parking lot

Bus Loop Gate. Bus, daycare van & walker entrance/ exit gate.

Pick-Up/Drop-Off Loop.

Pick-Up/Drop-Off Loop. Pull forward to green curb for pick-up/ drop-off.

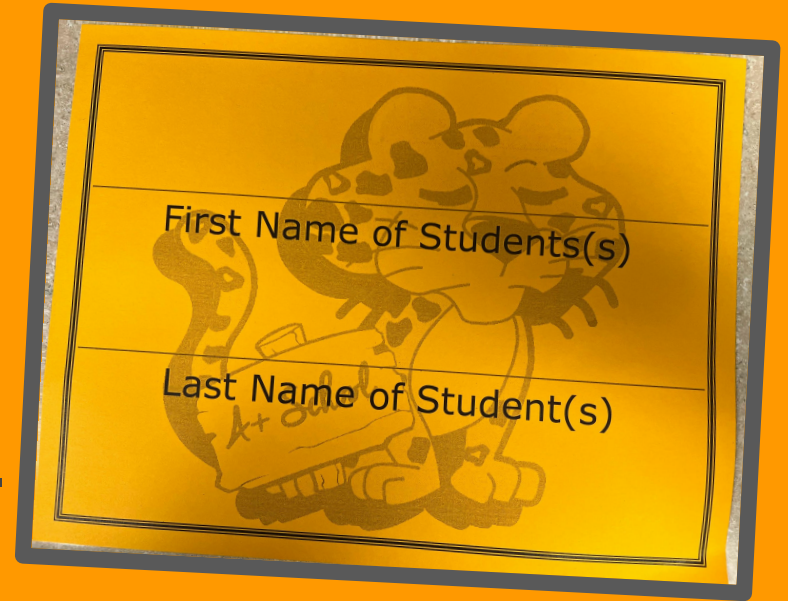
Pick-Up/Drop-Off Loop. Wait along blue curb. Pull forward to green curb for pick-up/drop-off.

Visitor Parking Lot. Also for AM/PM care drop-off/pick-up.

Triangles = designated crosswalk

2. Pick-Up Loop- Student Name Placard

- ❑ **MUST HAVE**
 - ❑ **Name Placard**
 - ❑ **Clearly printed**
 - ❑ **Visible for staff**
- ❑ **This includes parents who park and cross the crosswalk.**

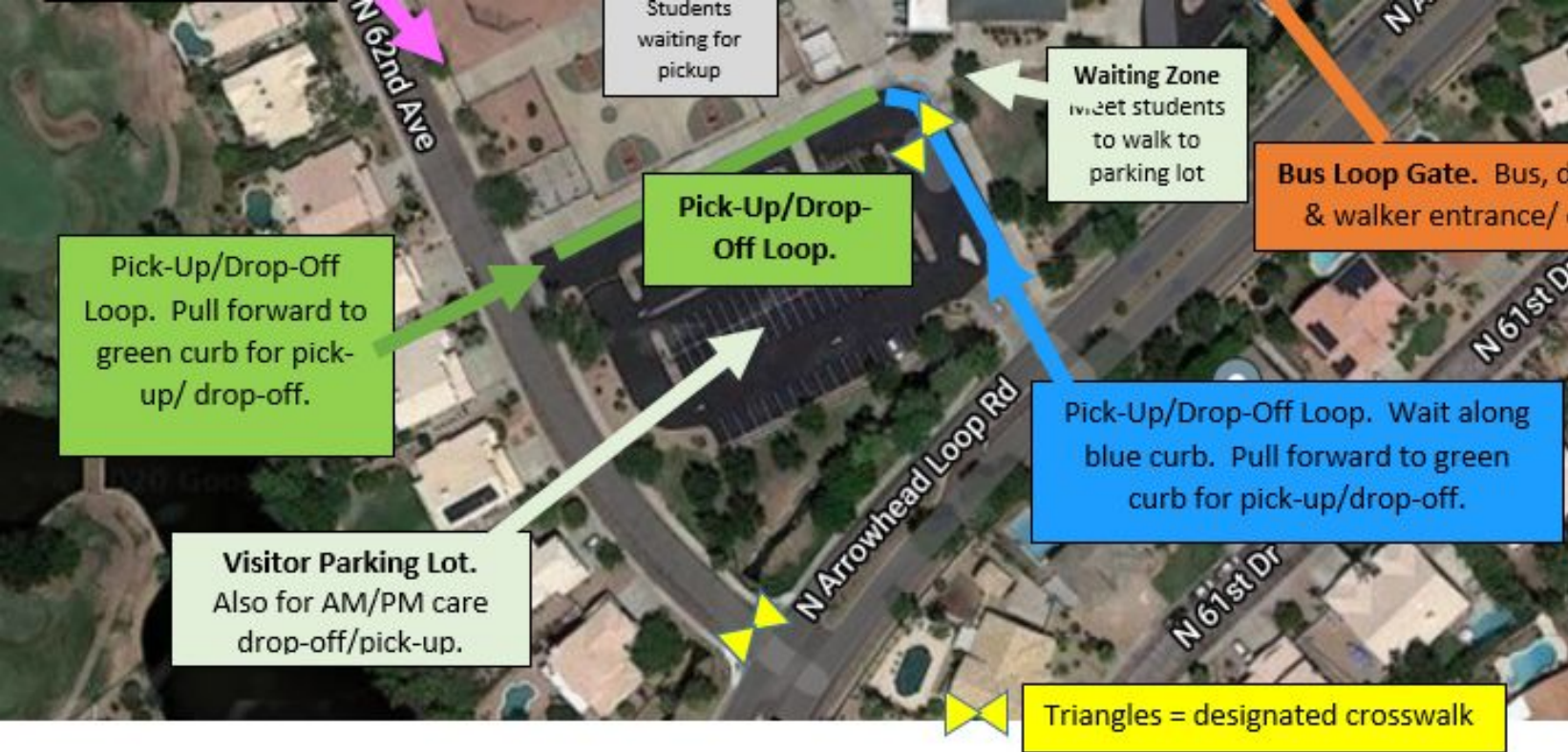


Note– any adult who picks up your child MUST HAVE a placard with names clearly printed

3. Pick-Up Loop Procedures

- ❑ Blue Curb**
 - ❑ Waiting only - NO STUDENT(S) ENTER OR EXIT**
- ❑ Green Curb**
 - ❑ Students enter/exit vehicle on curb side**
 - ❑ Drivers remain in vehicle**
 - ❑ Name Placard in window (visible)**
- ❑ Common courtesy**
 - ❑ Alternate drivers into the lot**
 - ❑ Give space at crosswalk**
 - ❑ Take turns & stay off electronics**

Blue Curb & Green Curb



5. Default to safety - kindness & respect



1. "Respect for ourselves guides our morals; respect for others guides our manners."
— Laurence Sterne

