

# Rise STEM Academy For Girls



Week Ending November 15, 2024



# Rise STEM Academy For Girls

## ➤ **Work Completed:**

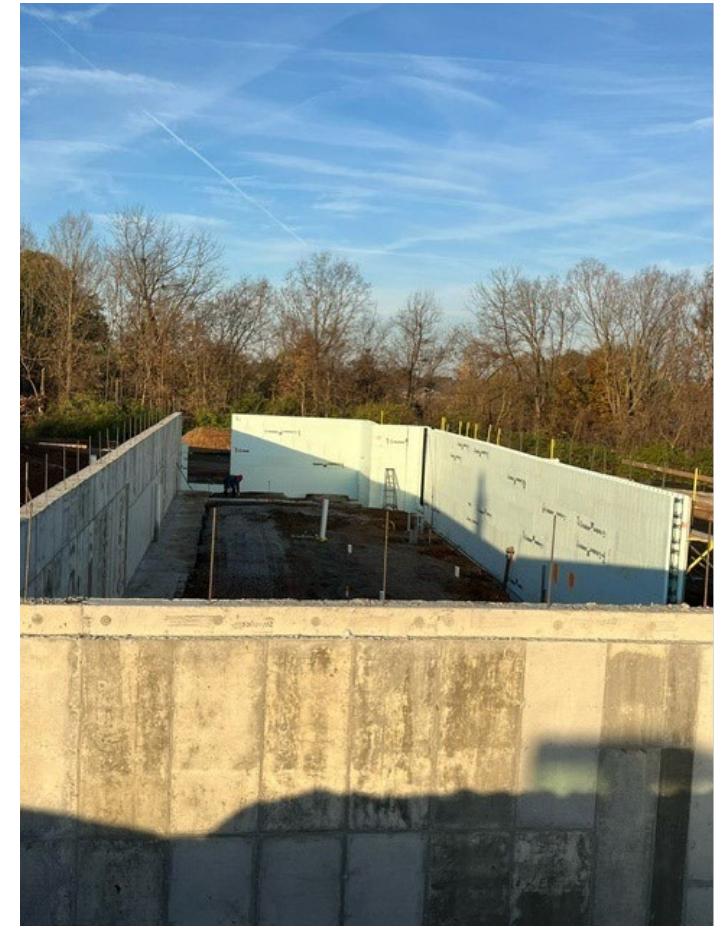
- Continued pouring interior footers and setting anchor bolts on the main level.
- ICF work progressing up to the window level.
- Began preparing the basement slab.
- MEP (mechanical, electrical, and plumbing) completed most underground work.
- Began gravel placement.

## ➤ **Upcoming Work / Look Ahead:**

- Begin pouring the basement slab.
- Begin setting the frames from the basement to the main level on the exterior.
- Begin blacktop work on-site.
- Begin interior masonry work, moving from the basement to the main level.

# Rise STEM Academy For Girls

## Basement work in Progress



# Rise STEM Academy For Girls

Interior Footers and Anchor Bolts in Progress



# Rise STEM Academy For Girls

ICF work in Progress



Week Ending November 15, 2024



# Rise STEM Academy For Girls

MEP Underground Work in Progress



Week Ending November 15, 2024