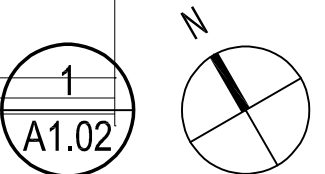


ENLARGED 1ST FLOOR
DEMOLITION SITE PLAN
SCALE: 1/8"=1'-0"



FLOOR PLAN DEMOLITION NOTES

1. PATCH AND REPAIR FLOOR AND WALLS AFFECTED BY DEMOLITION WORK. MATCH (E) ADJACENT MATERIAL FINISH AND COLOR.
2. PROTECT IN PLACE ALL ITEMS NOT BEING DEMOLISHED OR REMOVED. G.C. SHALL PATCH, REPAIR, AND PAINT, OR REPLACE ALL ITEMS AND FINISHES AFFECTED BY DEMOLITION.
3. UNLESS SPECIFICALLY DETAILED AND SHOWN ON THESE PLANS, NO STRUCTURAL MEMBER SHALL BE CUT, DRILLED, OR REMOVED WITHOUT PRIOR WRITTEN APPROVAL FROM THE ARCHITECT AND AUTHORITY HAVING JURISDICTION.
4. G.C. SHALL COORDINATE ALL REQUIRED SCOPE OF WORK FOR ALL TRADES PRIOR TO COMMENCING WORK.
5. REFER TO STRUCTURAL, ELECTRICAL, AND AQUATIC DESIGN DESIGN CORP. DRAWINGS FOR ADDITIONAL REQUIREMENTS.

DEMOLITION LEGEND

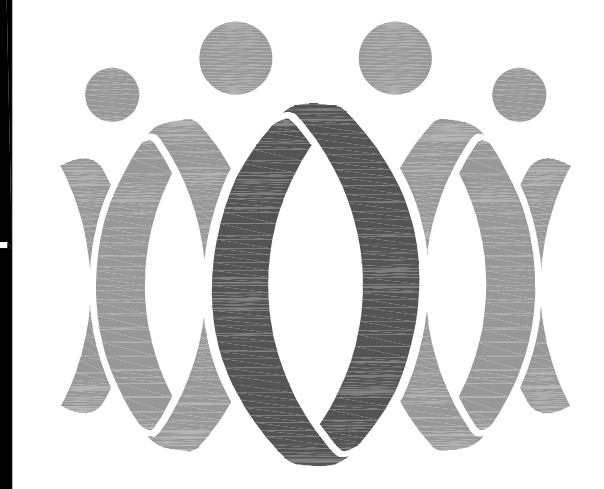
- ITEMS TO BE REMOVED AND/OR DEMOLISHED
- (E) WALL TO REMAIN
- (E) DOOR AND HARDWARE TO REMAIN. PREP DOOR AS REQUIRED TO RECEIVE (N) FINISH.
- (E) WALL MOUNTED LIGHT FIXTURE TO BE REMOVED.

DEMOLITION PLAN KEY NOTES

- 1 DEMO (E) SWIMMING POOL DECK PER SHEET DP.1
- 2 REMOVE (E) DRINKING FOUNTAIN IN ITS ENTIRETY. PATCH AND REPAIR AS REQUIRED TO RECEIVE (N) H/L.O DRINKING FOUNTAIN
- 3 DEMO PORTION OF (E) STUCCO TO ACCOMMODATE (N) WALL TILE FINISH FOR THE (N) RINSE OFF AREA. SEE ENLARGED PLAN AND ELEVATIONS IN SHEET A5.01.
- 4 DEMO PORTION OF (E) CONC. WALL TO ALLOW TAPPING TO (E) PLUMBING FOR THE (N) EXTERIOR SHOWER. RE-GROUT ALL DEMOLISHED CONCRETE.
- 5 REMOVE (E) SPEAKERS IN THEIR ENTIRETY AND CAP OFF WIRING. PATCH TO MATCH (E) ADJACENT MATERIAL FINISH AND COLOR.
- 6 REMOVE (E) DOORS AND FRAME IN THEIR ENTIRETY. PATCH AND REPAIR AS REQUIRED TO RECEIVE (N) DOOR.
- 7 REMOVE (E) MECHANICAL EQUIPMENT. SEE SHEET DP.1 AND MR.1 FOR ADDITIONAL INFORMATION
- 8 DEMO (E) POOL. SEE SHEET DP.1 FOR ADDITIONAL INFORMATION
- 9 NOT USED
- 10 REMOVE (E) SIGNAGE IN ITS ENTIRETY.
- 11 (E) LAVATORY. SEE SHEET A5.01 FOR ADDITIONAL INFORMATION AND ACCESSIBILITY REQUIREMENTS.
- 12 (E) TOILET. SEE SHEET A5.01 FOR ADDITIONAL INFORMATION AND ACCESSIBILITY REQUIREMENTS.
- 13 DEMO (E) CONCRETE AS REQUIRED FOR (N) 3" WATER LINE (COPPER) TIE-IN AT (E) GATE VALVE. DEMO TO NEAREST EXPANSION JOINT/CONTROL JOINT
- 14 REMOVE (E) LIGHT FIXTURE AND CAP OFF WIRING. PATCH TO MATCH (E) ADJACENT MATERIAL FINISH AND COLOR.
- 15 REMOVE PORTION OF (E) STUCCO BENEATH ALL NEW AWNING CONNECTION POINTS AS NECESSARY PRIOR TO INSTALLATION. ALLOW AWNING CONNECTION PLATES TO SIT DIRECTLY ONTO (E) STRUCTURAL CMU BLOCK WALL.
- 16 REMOVE PORTION OF (E) STUCCO BENEATH ENTIRE LENGTH OF NEW FLASHING AS NECESSARY PRIOR TO INSTALLATION. ALLOW FLASHING TO SIT DIRECTLY ONTO EXISTING STRUCTURAL CMU BLOCK WALL.
- 17 REMOVE (E) SCOREBOARD. TEST AND REPAIR ALL ELECTRICAL AND CONDUIT PRIOR TO INSTALLATION OF (N) SCOREBOARD.
- 18 REMOVE ALL (E) LIGHT FIXTURE. TEST AND REPAIR ALL ELECTRICAL AND CONDUIT PRIOR TO INSTALLATION OF (N) LIGHT FIXTURE.
- 19 REMOVE REMAINING POOL DECK CONCRETE AROUND ALL (E) LIGHT POLE BASES. TYPICAL FOR ALL FOUR (4)
- 20 PATCH AND REPAIR ALL (E) FLOOR, WALLS, CEILINGS, AND DOORS AS REQUIRED TO RECEIVE (N) FINISH. SEE FINISH SCHEDULE FOR ADDITIONAL INFORMATION.
- 21 PREP: PATCH AND REPAIR ALL (E) EXTERIOR WALLS, FENCES, GATES, AND CONCRETE POST PILARS AS REQUIRED TO RECEIVE (N) FINISH.
- 22 PROTECT IN PLACE (E) UNDERGROUND CONCRETE BOX

AGENCY

PTN_64337-110 APPL_03-122682



FLEWELLING & MOODY
architecture planning interiors

HEADQUARTERS OFFICE:
815 Colorado Blvd, Suite 200
Los Angeles, CA 90041
323.543.8330
E-Mail: fm-gassadens@flewelling-moody.com

ANTELOPE VALLEY OFFICE:
1035 West Lancaster Boulevard
Lancaster, California 93534
661.949.0771
E-Mail: fm-lancaster@flewelling-moody.com

An Employee Owned Corporation

ARCHITECT



CONSULTANT

Drawn by: -
Checked by: -

Revisions

No.	Date	Description
1	09/12/2024	ADDENDUM 1

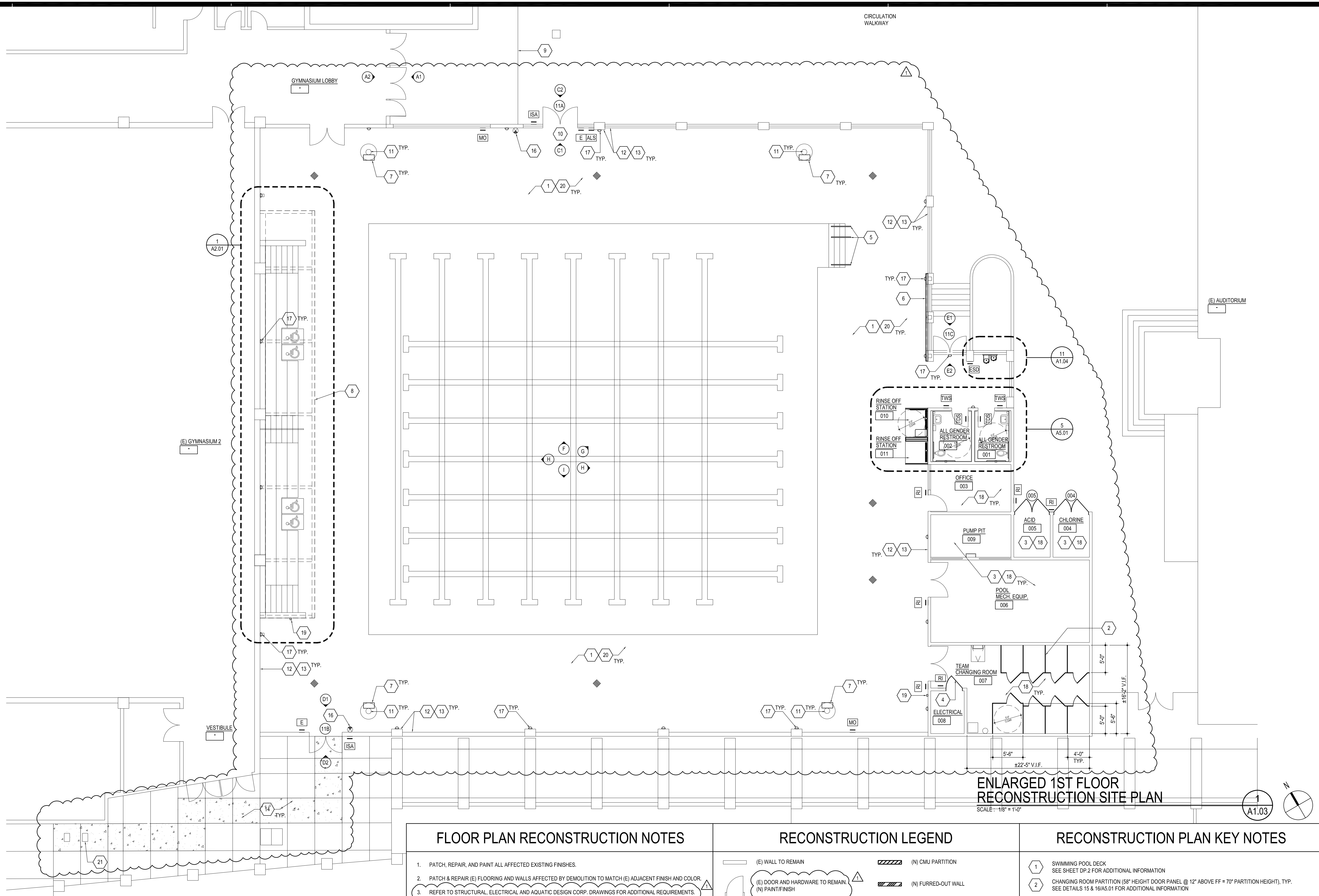
All dimensions must be checked at the job by the contractor who accepts full responsibility for their accuracy under the contract. These plans & the specifications in connection therewith have been prepared for a specific site. Any and all responsibility for their use in whole or in part on any other site is hereby disclaimed by Flewelling & Moody.

BURBANK UNIFIED
SCHOOL DISTRICT
BURBANK
HIGH SCHOOL
AQUATIC CENTER
MODERNIZATION
902 NORTH 3RD STREET
BURBANK, CA 91502

ENLARGED
DEMOLITION
SITE PLAN

Job No:
2986.0000
Date: 11-18-2022

A1.02



ALS RECEIVERS REQUIREMENTS

(E) BLEACHERS

TOTAL SEATING CAPACITY INCLUDING WHEELCHAIR SPACE
REQUIRED NUMBER OF RECEIVERS (4% OF SEATING CAPACITY)

105x 4% = 4.2 = 5 RECEIVERS

PROVIDE PORTABLE ASSISTIVE LISTENING RECEIVERS

EXITING ANALYSIS AT POOL AREA

A. SWIMMING POOL	6,150 S.F.
AREA	50
LOAD FACTOR	6,150/50 = 123
MAX. OCCUPANT LOAD	
B. DECK	6,831
AREA	15
LOAD FACTOR	6,831/15 = 423
MAX. OCCUPANT LOAD	
C. AREA WITH FIXED SEATS	
(E) BLEACHER CAPACITY	105
D. TOTAL OCCUPANT LOAD	423 + 105 = 528
MOST RESTRICTIVE OCCUPANT LOAD:	528
B. OCCUPANT LOAD	528
NUMBER OF EXITS REQUIRED (1008.3.2)	3

GATE SCHEDULE

GATE NO.	PROVIDED GATE WIDTH	OCC. LOAD	EGRESS PER OCC. REQUIRED	CALCULATIONS	REMARKS
11A	6'-0" or 7'2"	651	2"	528/3 = 174	OK
11B				174 x 2 = 348"	OK
11C				348" < 72"	OK

FLOOR PLAN RECONSTRUCTION NOTES

- PATCH, REPAIR, AND PAINT ALL AFFECTED EXISTING FINISHES.
- PATCH & REPAIR (E) FLOORING AND WALLS AFFECTED BY DEMOLITION TO MATCH (E) ADJACENT FINISH AND COLOR.
- REFER TO STRUCTURAL, ELECTRICAL AND AQUATIC DESIGN CORP. DRAWINGS FOR ADDITIONAL REQUIREMENTS.

RECONSTRUCTION LEGEND

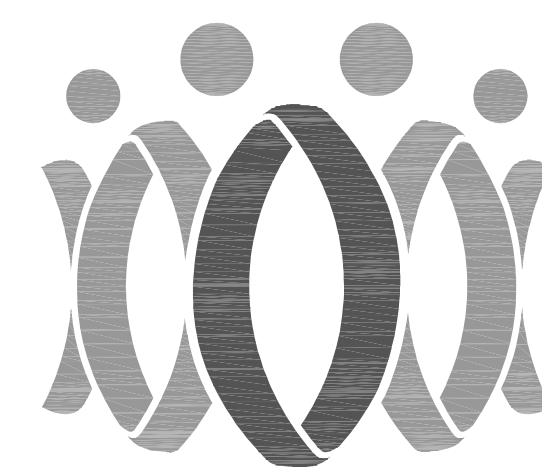
- (E) WALL TO REMAIN
- (E) DOOR AND HARDWARE TO REMAIN
- (N) PAINT/FINISH
- (E) FIRE EXTINGUISHER TO REMAIN
- (E) ELECTRICAL PANEL TO REMAIN
- (N) WALL MOUNTED LIGHT FIXTURE
- (N) CONCRETE
- (N) CMU PARTITION
- (N) FURRED-OUT WALL
- DOOR / GATE TYPE, SEE DOOR SCHEDULE ON SHEET A7.01
- PHOTO REFERENCE - SEE SHEET A8.01 (FOR REFERENCE ONLY)
- TACTILE "ROOM IDENTIFICATION" SIGN, SEE DTL.
- TACTILE "EXIT" SIGN, SEE DTL.
- TACTILE "EXIT ROUTE" SIGN, SEE DTL.
- TACTILE "MAXIMUM OCCUPANCY" SIGN, SEE DTL.
- TACTILE "INTERNATIONAL SYMBOL OF ACCESSIBILITY" SIGN, SEE DTL.
- TACTILE "TOILET DOOR SIGN" SEE DTL.
- TACTILE "TOILET WALL SIGN" SEE DTL.
- TACTILE "ASSISTIVE LISTENING DEVICE" SEE DTL.
- TACTILE "EXIT STAIR DOWN SIGN" SEE DTL.

RECONSTRUCTION PLAN KEY NOTES

- SWIMMING POOL DECK
- SEE SHEET DP-2 FOR ADDITIONAL INFORMATION
- CHANGING ROOM PARTITION (58" HEIGHT DOOR PANEL @ 12" ABOVE FF = 70" PARTITION HEIGHT), TYP. SEE DETAILS 15 & 16AS.01 FOR ADDITIONAL INFORMATION
- MECHANICAL EQUIPMENT
- SEE SHEETS DP, 2 AND MR, 1 FOR ADDITIONAL INFORMATION
- (N) HOLLOW METAL DOOR AND FRAME, PRIME AND PAINT
- (N) DIGITAL LED SCORE BOARD
- (N) LIGHT POLE-MOUNTED SPEAKERS - MOUNTED 80" MIN FROM FINISH FLOOR TO BOT. OF THE UNIT.
- (N) SHADE AWNING ABOVE (E) BLEACHERS, SEE ENLARGED DETAIL
- (E) FACE OF GYMNASIUM BUILDING
- (E) ACCESSIBLE GATE, SEE TYP. ENLARGED ELEV.
- (N) PAINT/FINISH
- (E) LIGHT POLE (A# 03-105549)
- (E) FENCES, GATES, AND CONCRETE POST PILLS (A# 03-105549)
- (N) PAINT/FINISH ALL (N) & (E) FENCES, GATES AND CONC. PILLS NOT BEING DEMOED - SEE A#03-123187
- (E) CONCRETE WALL (A# 03-105549), (N) PAINT/FINISH ENTIRE STUCCO WALL
- (N) CONCRETE TO MATCH EXISTING.
- (E) HANDRAILS TO BE UPGRADED, SEE SHEET DP.1.
- (N) ILLUMINATED EXIT SIGN, SEE ELECTRICAL DRAWINGS FOR ADDITIONAL INFORMATION.
- (N) WALL MOUNTED LIGHT, SEE ELECTRICAL DRAWINGS FOR ADDITIONAL INFORMATION.
- ALL (E) FLOOR, WALLS, CEILINGS, AND DOORS TO RECEIVE (N) PAINT/FINISH. SEE FINISH SCHEDULE FOR ADDITIONAL INFORMATION.
- (N) WALL MOUNTED HOSE BIB W/ (N) 3" WATER LINE (COPPER) TIE-IN AT GATE VALVE.
- ALL (E) DECK STORM DRAIN SYSTEM THAT WAS DAMAGED DURING DEMOLITION TO BE REPLACED.
- (E) GATE VALVE FOR NEW WATER LINE TIE-IN

AGENCY

PTN_64337-110 APPL_03-122682



FLEWELLING & MOODY
architecture planning interiors

HEADQUARTERS OFFICE:

815 Colorado Blvd, Suite 200
Los Angeles, CA 90041
323.543.8300

E-Mail: fm-pasadena@flewelling-moody.com

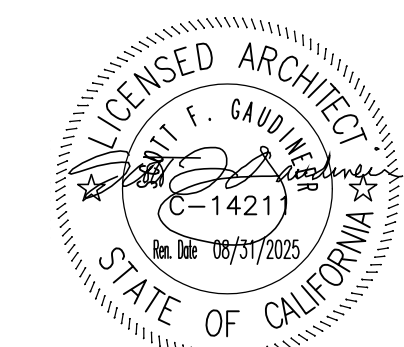
ANTELOPE VALLEY OFFICE:

1035 West Lancaster Boulevard
Lancaster, California 93534
661.949.0771

E-Mail: fm-lancaster@flewelling-moody.com

An Employee Owned Corporation

ARCHITECT



CONSULTANT

Drawn by

Checked by

Revisions

No.

Date

Description

1

09/12/2024

ADDENDUM 1

All dimensions must be checked at the job by the contractor who accepts full responsibility for their accuracy under the contract. These plans & the specifications in connection therewith have been prepared for a specific site. Any and all responsibility for their use in whole or in part on any other site is hereby disclaimed by Flewelling & Moody.

BURBANK UNIFIED
SCHOOL DISTRICT

BURBANK
HIGH SCHOOL
AQUATIC CENTER
MODERNIZATION

902 NORTH 3RD STREET
BURBANK, CA 91502

ENLARGED
RECONSTRUCTION
SITE PLAN

Job No.

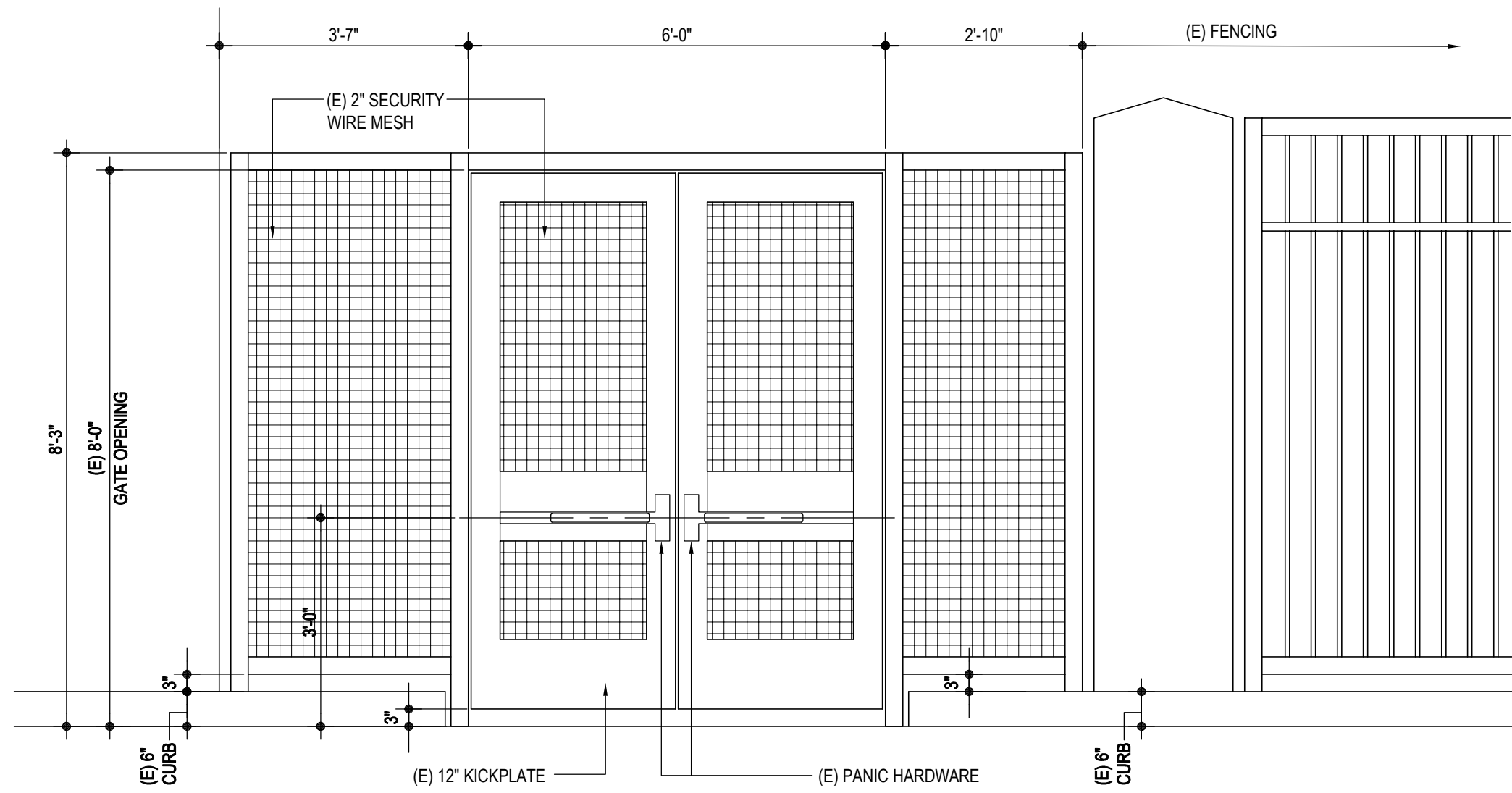
2986.0000

Date

11-18-2022

A1.03

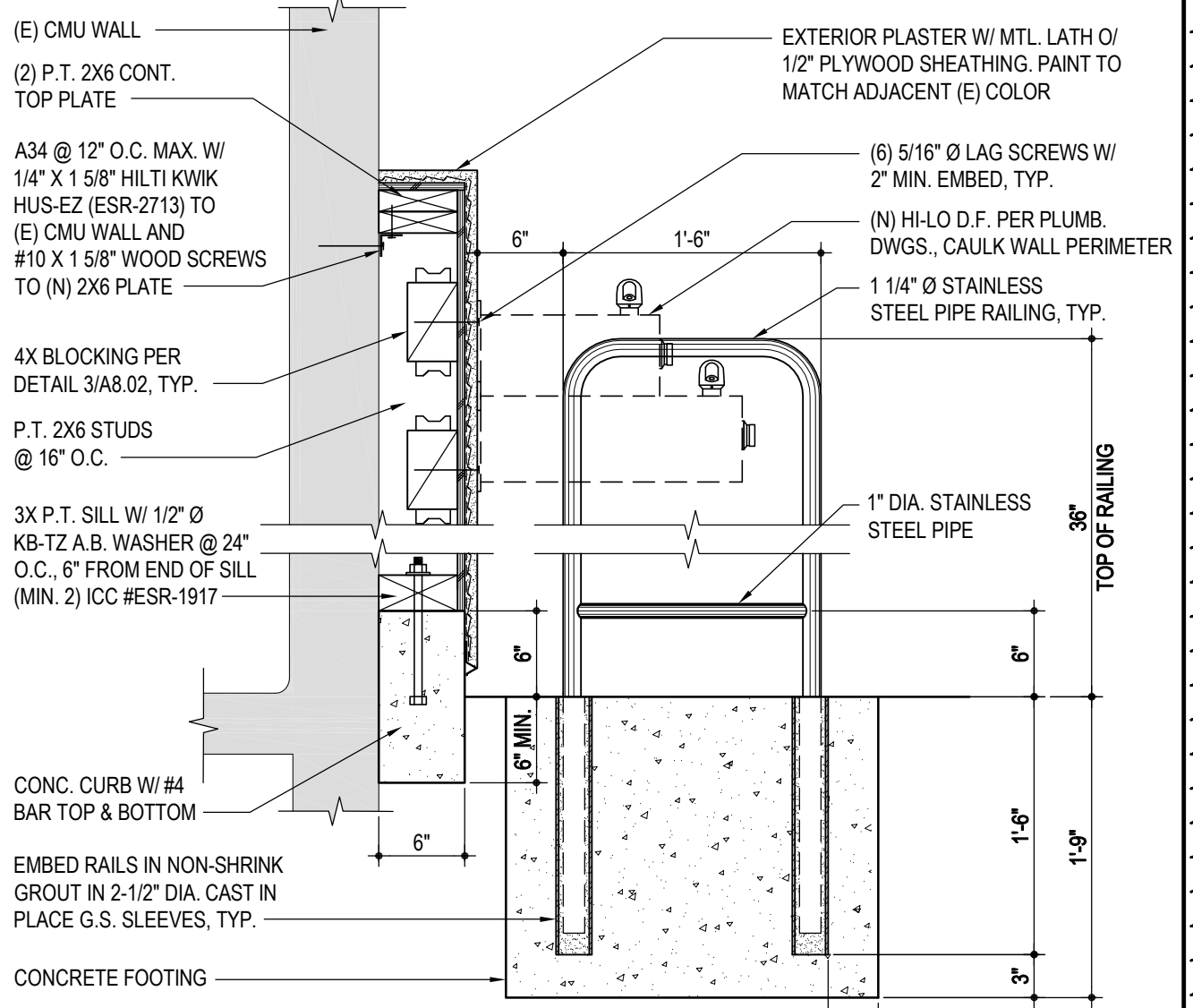
BID ADDENDUM 1



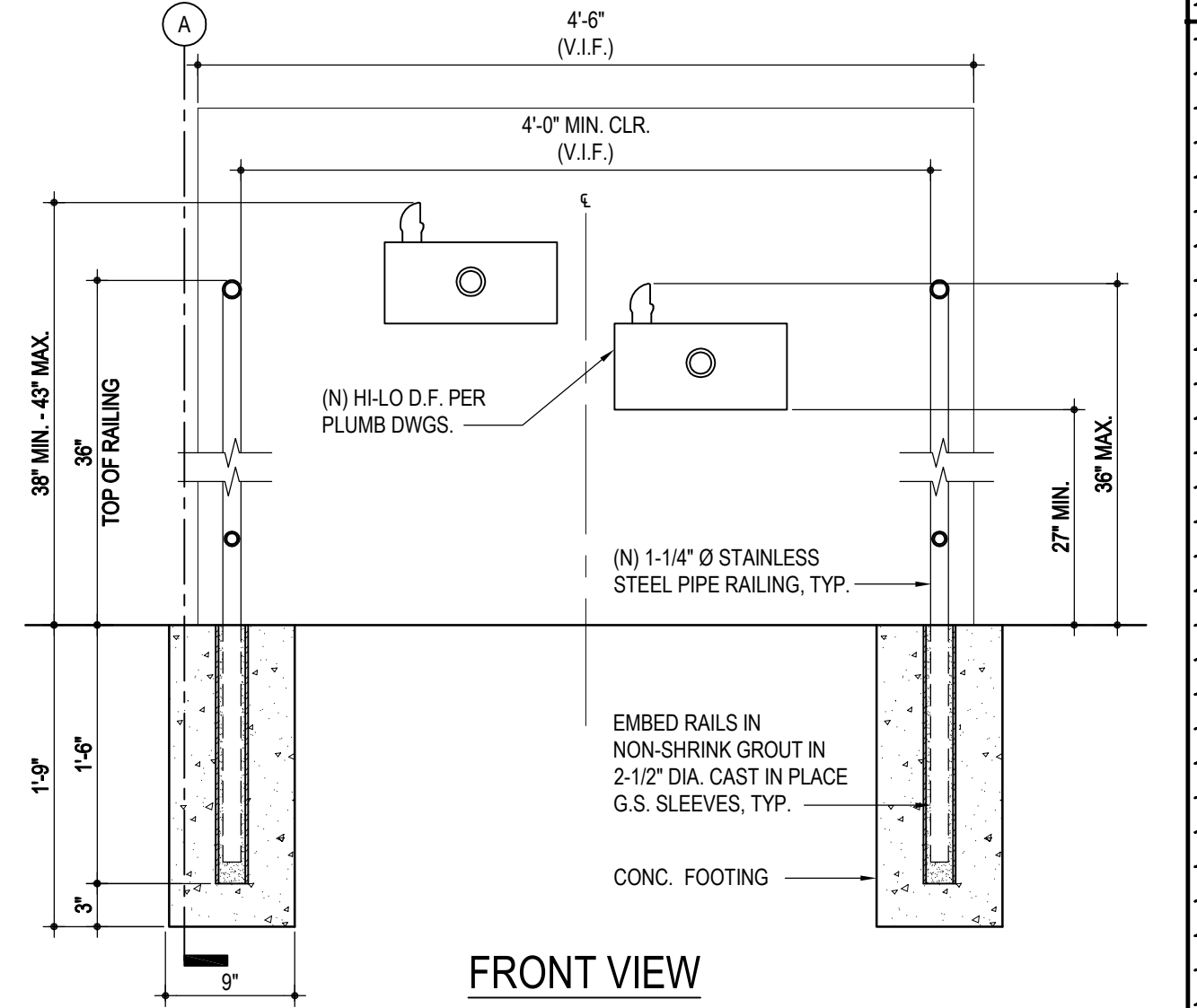
(E) TYPICAL GATE ELEVATION - A# 105549

SCALE: 1/2"=1'-0"

PROJECT NUMBER: 2986
DATE: 09/12/2024
SHEET REFERENCE: A1.04



SECTION 'A'



FRONT VIEW

NOTE: ALL REINFORCING BARS SHALL CONFORM TO ACI 318-14 20.2 AND ASTM A615 GRADE 60.

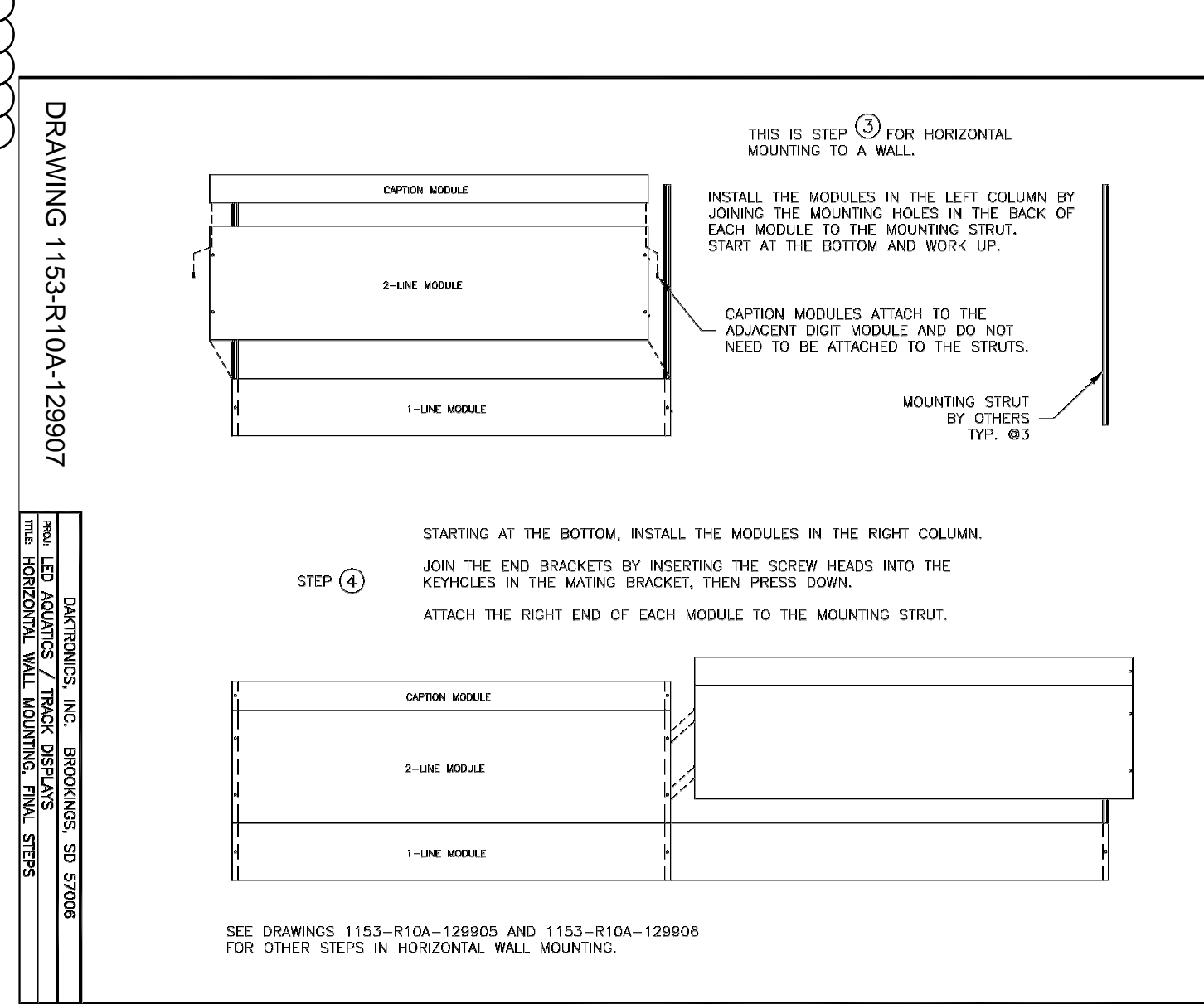
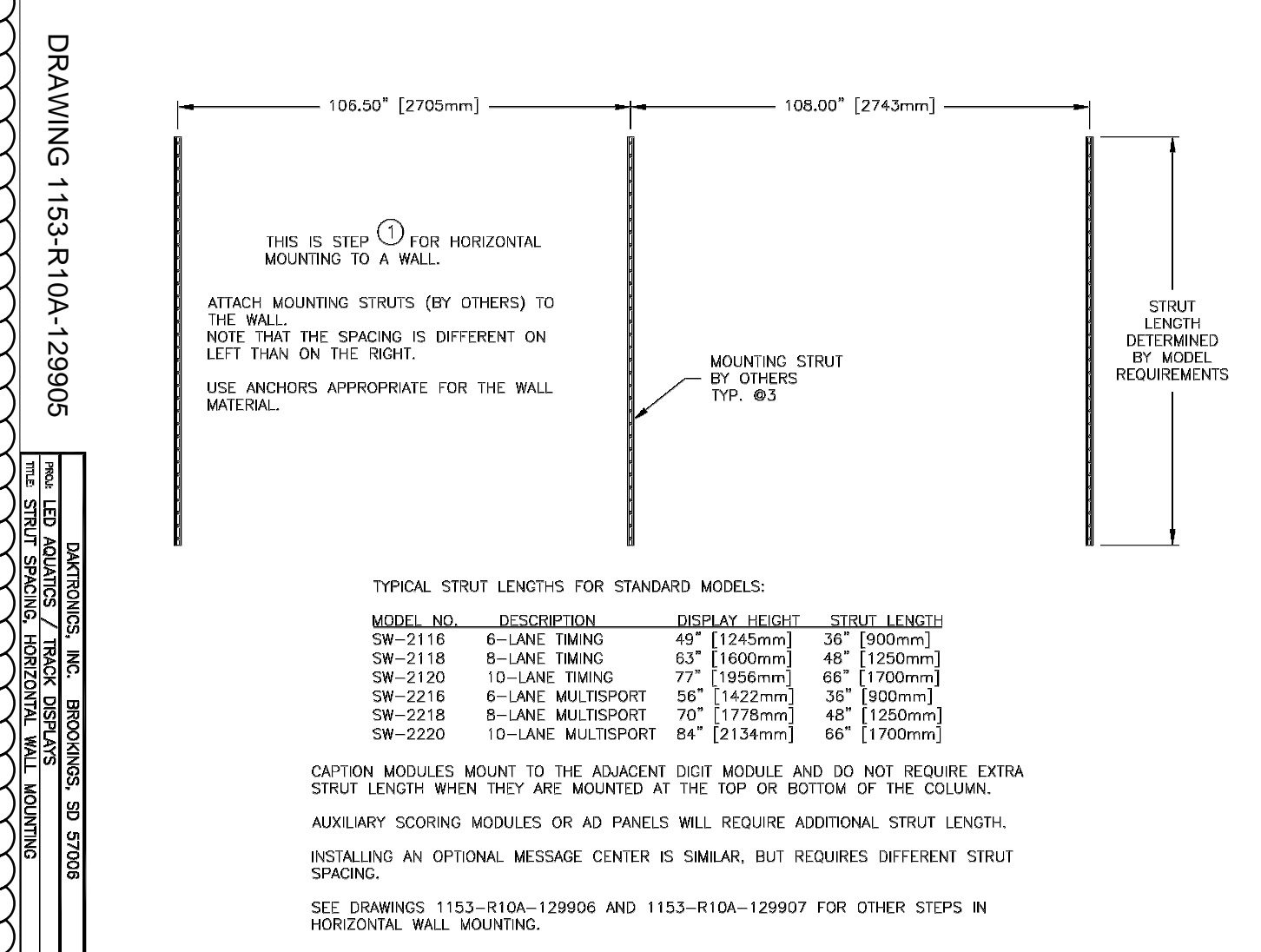
ACCESSIBLE HI-LO DRINKING FOUNTAIN

SCALE: 1"=1'-0"

DRINKING FOUNTAIN DETAIL

SCALE: 1"=1'-0"

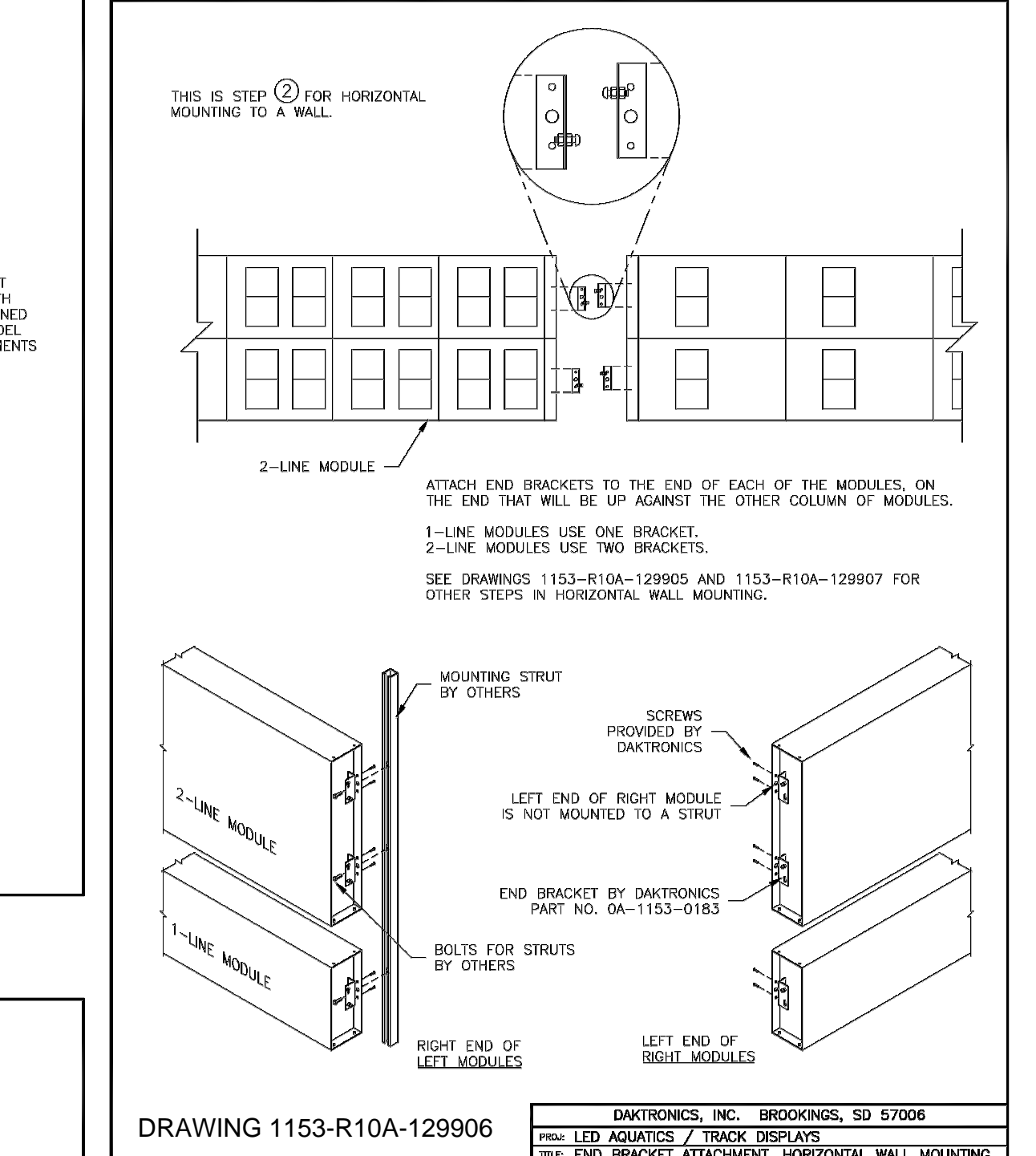
PROJECT NUMBER: 2986
DATE: 09/12/2024
SHEET REFERENCE: A1.04



SCOREBOARD MOUNTING

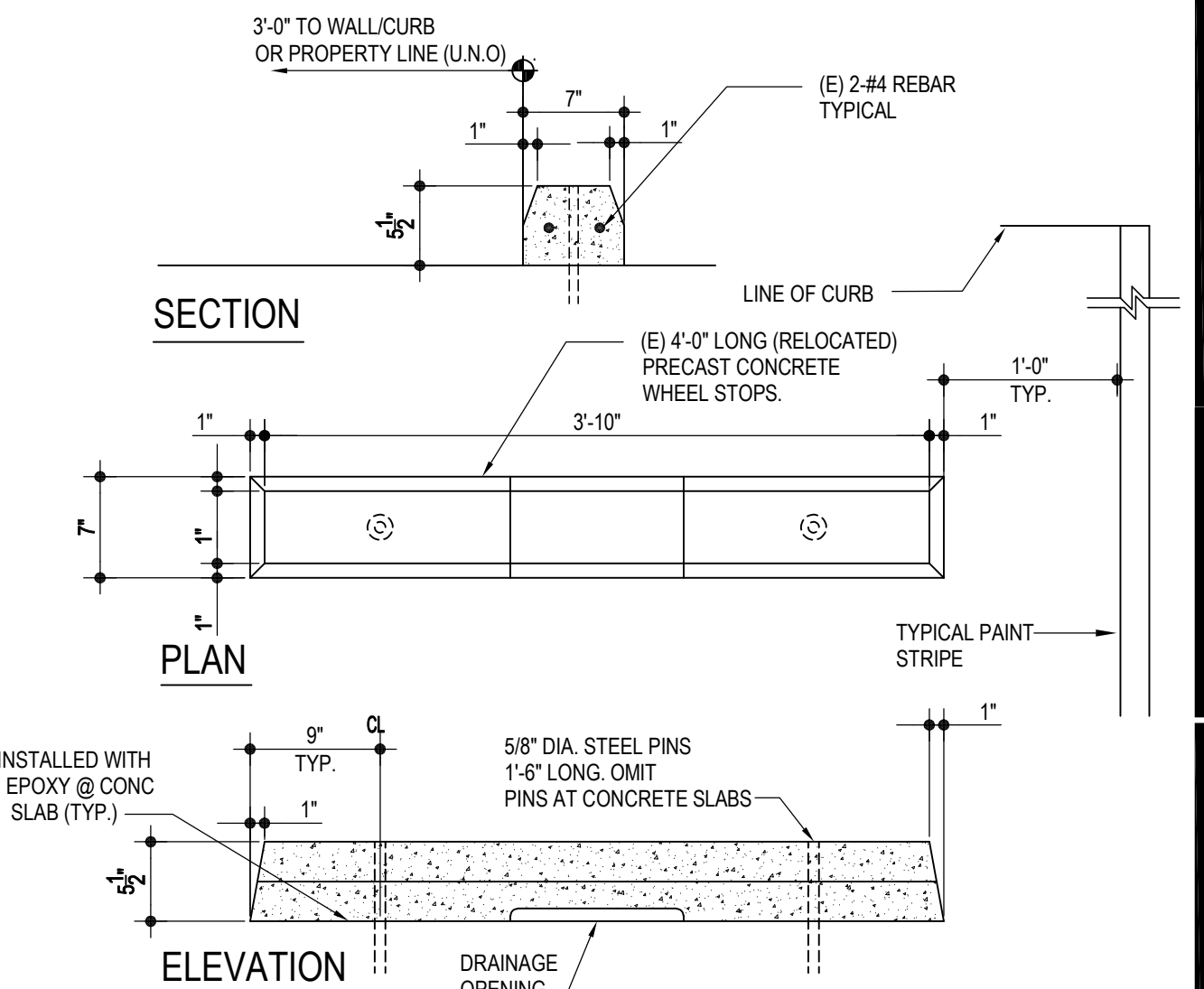
SCALE: NTS

PROJECT NUMBER: 2986
DATE: 09/12/2024
SHEET REFERENCE: A1.04



DRAWING 1153-R10A-129906

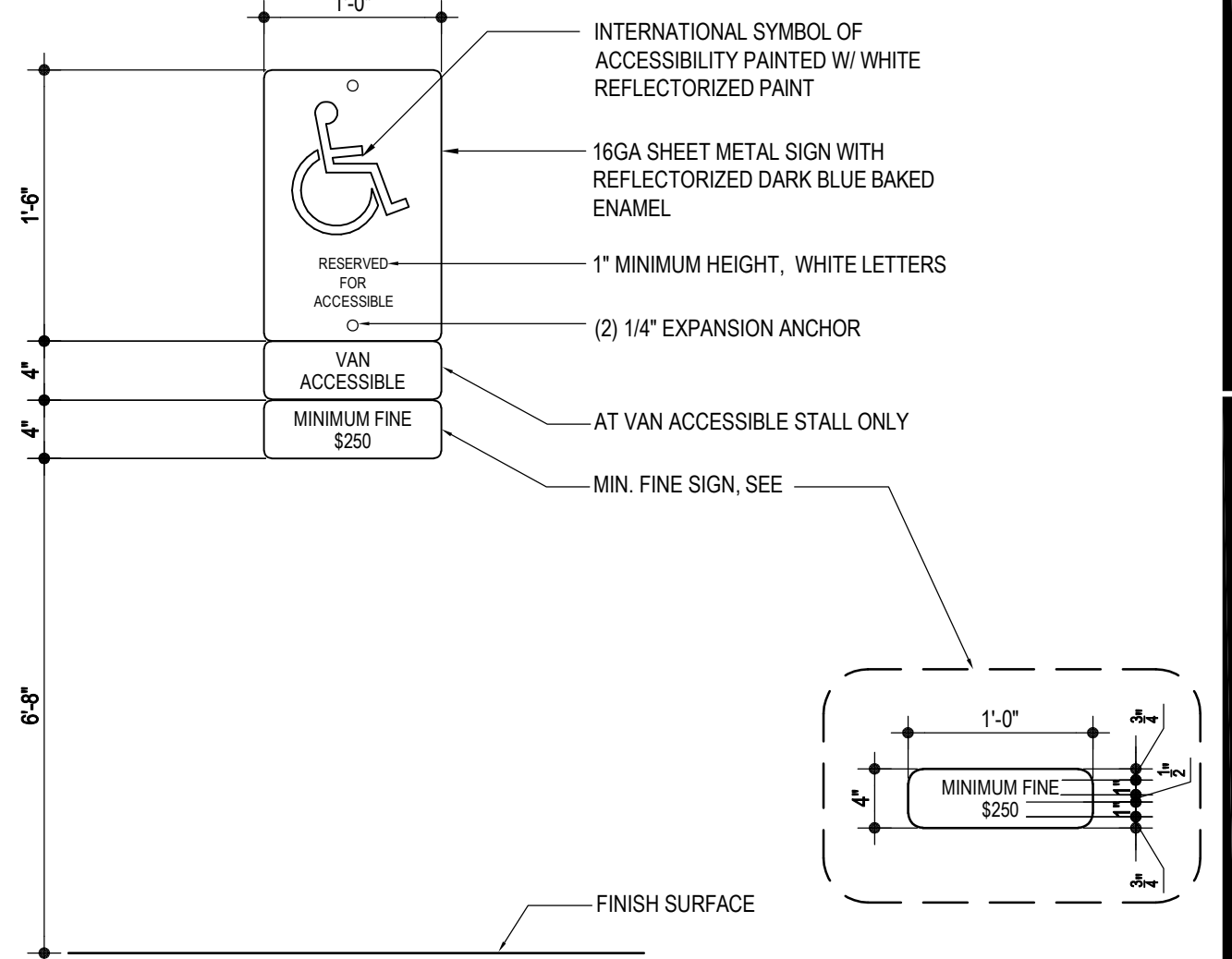
NOTE: SCOREBOARD WEIGHT = 400LBS



CONCRETE WHEEL STOP

SCALE: 1"=1'-0"

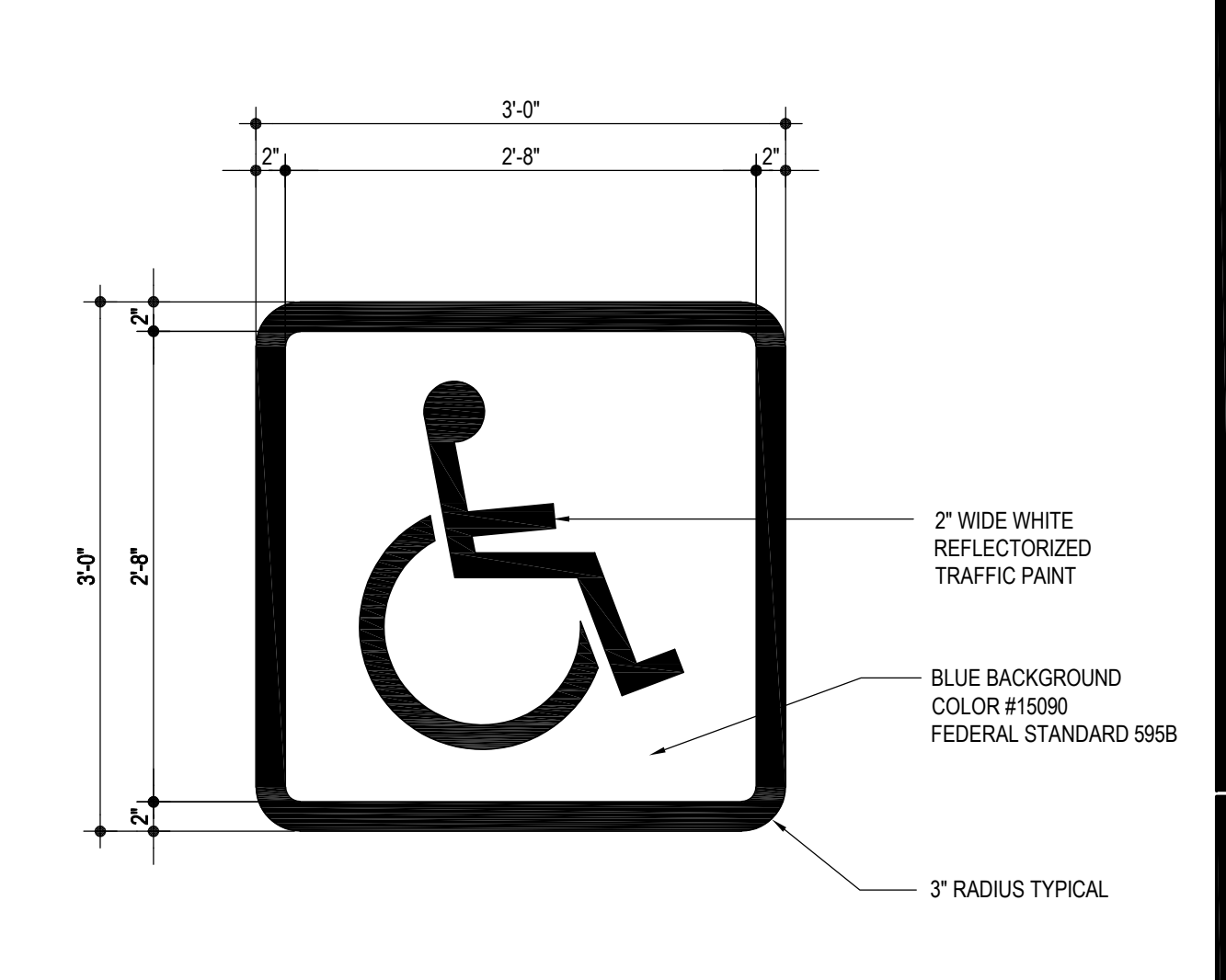
PROJECT NUMBER: 2986
DATE: 09/12/2024
SHEET REFERENCE: A1.04



WALL MOUNTED ACCESSIBLE PARKING SIGN

SCALE: 1"=1'-0"

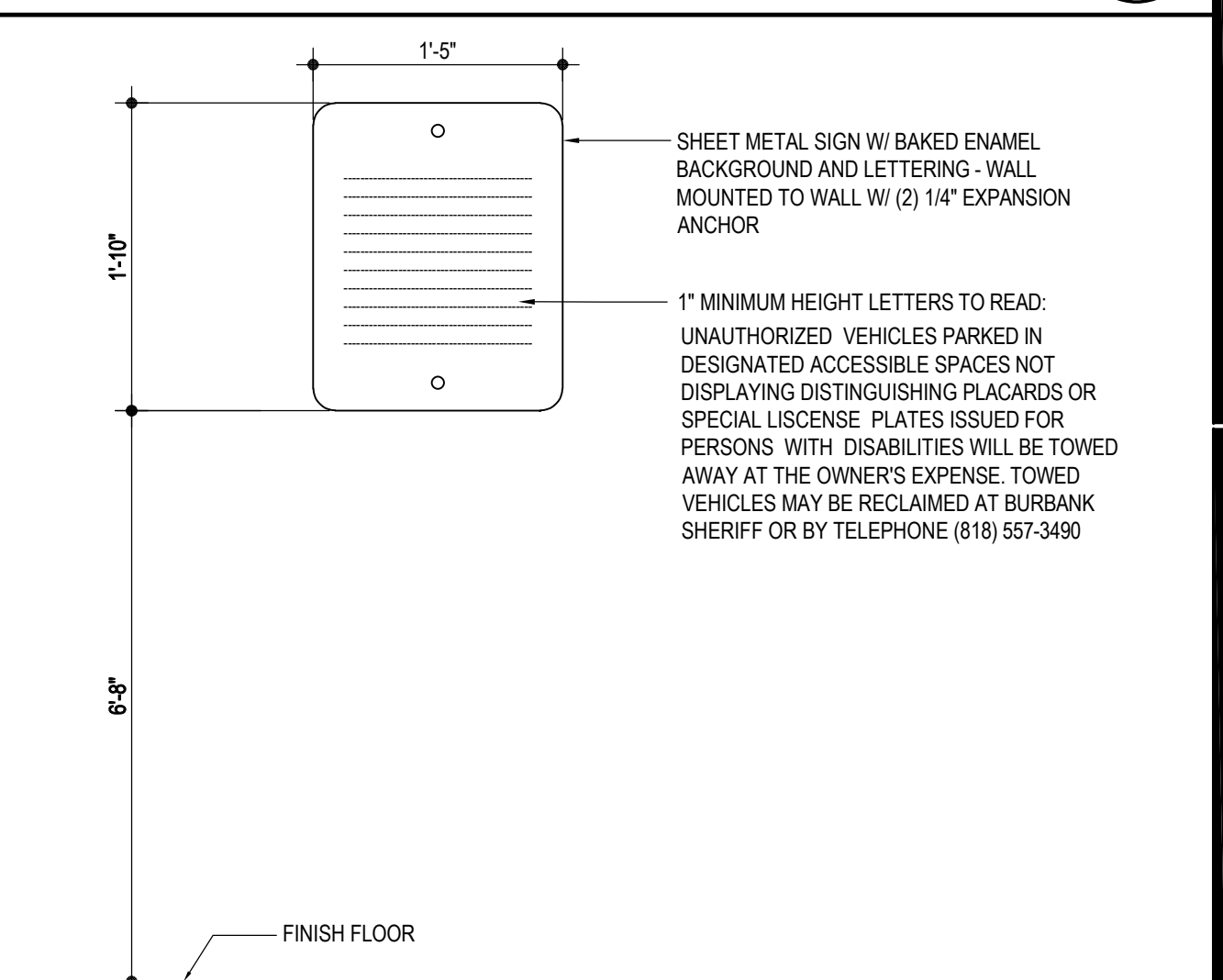
PROJECT NUMBER: 2986
DATE: 09/12/2024
SHEET REFERENCE: A1.04



ACCESSIBILITY SYMBOL

SCALE: 1"=1'-0"

PROJECT NUMBER: 2986
DATE: 09/12/2024
SHEET REFERENCE: A1.04



ENTRANCE WARNING SIGN

SCALE: 1"=1'-0"

PROJECT NUMBER: 2986
DATE: 09/12/2024
SHEET REFERENCE: A1.04

AGENCY

PTN_64337-110 APPL_03-122682

FLEWELLING & MOODY

architecture planning interiors

HEADQUARTERS OFFICE:

815 Colorado Blvd, Suite 200

Los Angeles, CA 90041

E-Mail: fm-pasadena@flewelling-moody.com

ANTELOPE VALLEY OFFICE:

1035 West Lancaster Boulevard

Lancaster, California 93534

661.949.0771

E-Mail: fm-lancaster@flewelling-moody.com

An Employee Owned Corporation

ARCHITECT

CONSULTANT

Drawn by

Checked by

Revisions

No.	Date	Description
1	09/12/2024	ADDENDUM 1

All dimensions must be checked at the job by the contractor who accepts full responsibility for the accuracy under the contract. These plans & the specifications in connection therewith have been prepared for a specific site. Any and all responsibility for their use in whole or in part on any other site is hereby disclaimed by Flewelling & Moody.

BURBANK UNIFIED SCHOOL DISTRICT

BURBANK HIGH SCHOOL

AQUATIC CENTER MODERNIZATION

902 NORTH 3RD STREET

BURBANK, CA 91502

SITE DETAILS & PHOTO REFERENCE

Job No.

2986.0000

Date

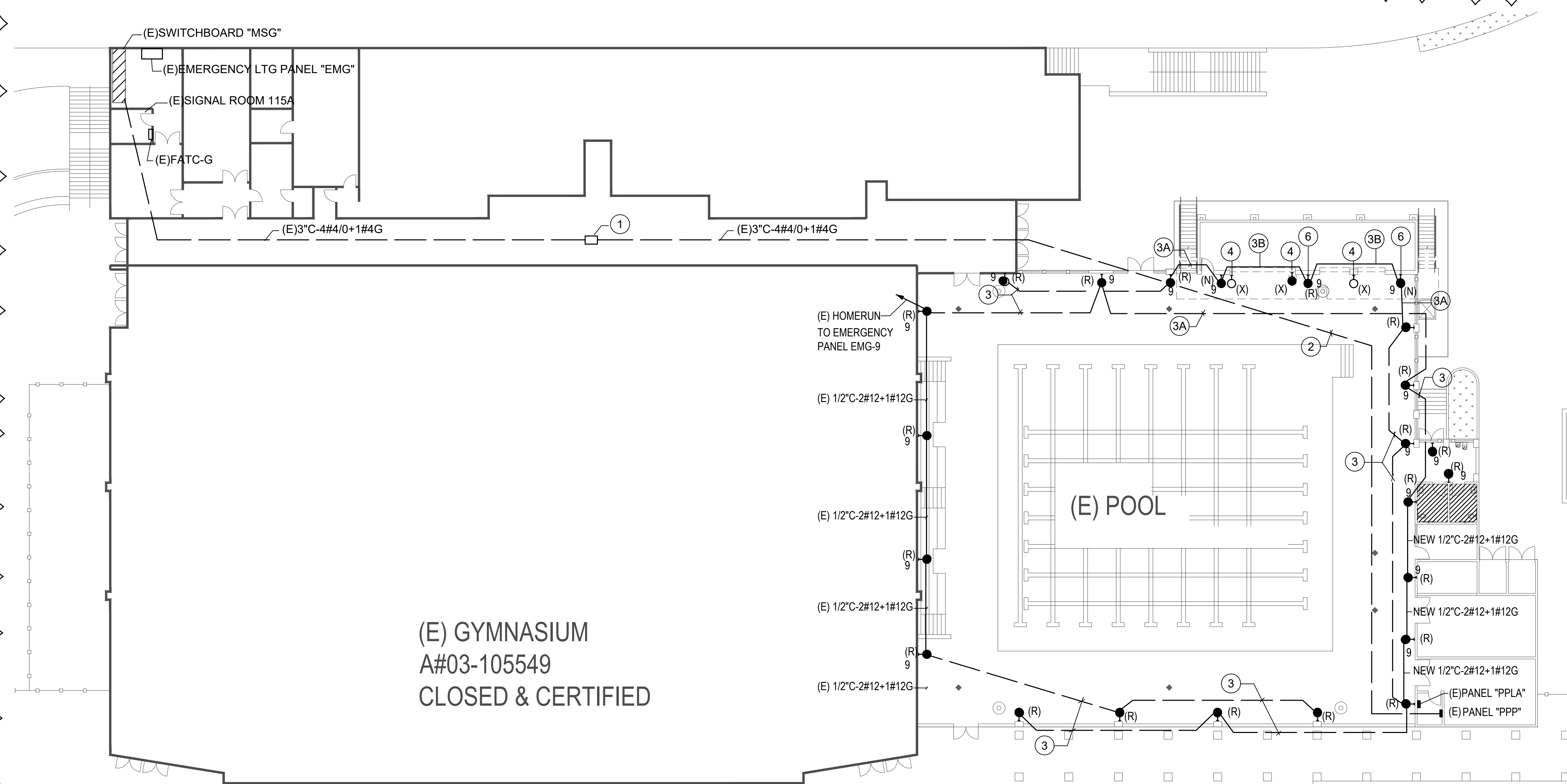
11-18-2022

1

A1.04

PANEL:	(E) PANEL "PPLA"			VOLTAGE:			208/120V			3 PHASE			MAIN:			150 A/3 CB		
LOCATION:	ELEC ROOM			BUS SIZE:			250 A			4 WIRE			MOUNTING:			SURFACE		

LOCATION	VA			L C L	OUTLETS			CB	CKT NO.		CKT NO.	CB	OUTLETS			L C L	VA			LOCATION		
	øA	øB	øC		MISC	REC	LT						MISC	REC	LT		øA	øB	øC			
(E) RECPT	540					3		20	1		2	20		2			1200			SCOREBOARD		
(E) RECPT		1500				3		30	3		4	20		2				1200		(E) RECPT		
(E) RECPT			1500			2		30	5		6	20		2					1200	(E) RECPT		
(E) RECPT	540					3		20	7		8	15	1			510				EF-1		
(E) RECPT		900				5		20	9		10	15	1				510			EF-2		
(E) RECPT			540			3		20	11		12	20		1				180		(E) RECPT		
SPARE								20	13		14	20				500				(E) RECPT		
(E) LTS		480					8	20	15		16	20		1			500			(E) RECPT		
(E) LTS			600				10	20	17		18	20		1				500		(E) RECPT		
SPACE								19			20		2			162				(E) EF		
(E) CONTACTOR		100			1			20	21		22	20	1				1000			(E) EF		
SPARE								20	23		24	20	1				1000			(E) EF		
(E) WALKWAY LTS	500						10	20	25		26	100				5676				(E) PANEL PPLB		
(E) RECEPT		660			2			20	27		28						6600					
(E)SOUND RACK			360		2			20	29		30		3				6600					
LIFT		1800			1			20	31		32											
STORAGE LTS		125					5	15	33		34											
ROLL UP DOOR			1080		1			15	35		36											
SPACE								37			38											
								39			40											
								41			42											
TOTAL	3380	3765	4080													8528	9810	9480	TOTAL			
CONNECTED LOAD (W)= øA:	11908			øB:			13575			øC:			13560			TOTAL CONNCTD. LOAD:			39043			
NOTES: PANEL SHALL BE PRODUCT OF EATON CO.																	LCL:			10705(LCL) = 10705		
PROVIDE 10,000 AIC RATED BOLT-ONCIRCUIT BREAKERS.																	LCL @25%:			2676		
																	TOTAL LOAD (VA):			41719		
1 CIRCUIT BREAKER WITH LOCK-OUT																	AMPS:			116 A		
2 PROVIDE NEW CIRCUIT BREAKER TO MATCH EXISTING.																						



GENERAL NOTES

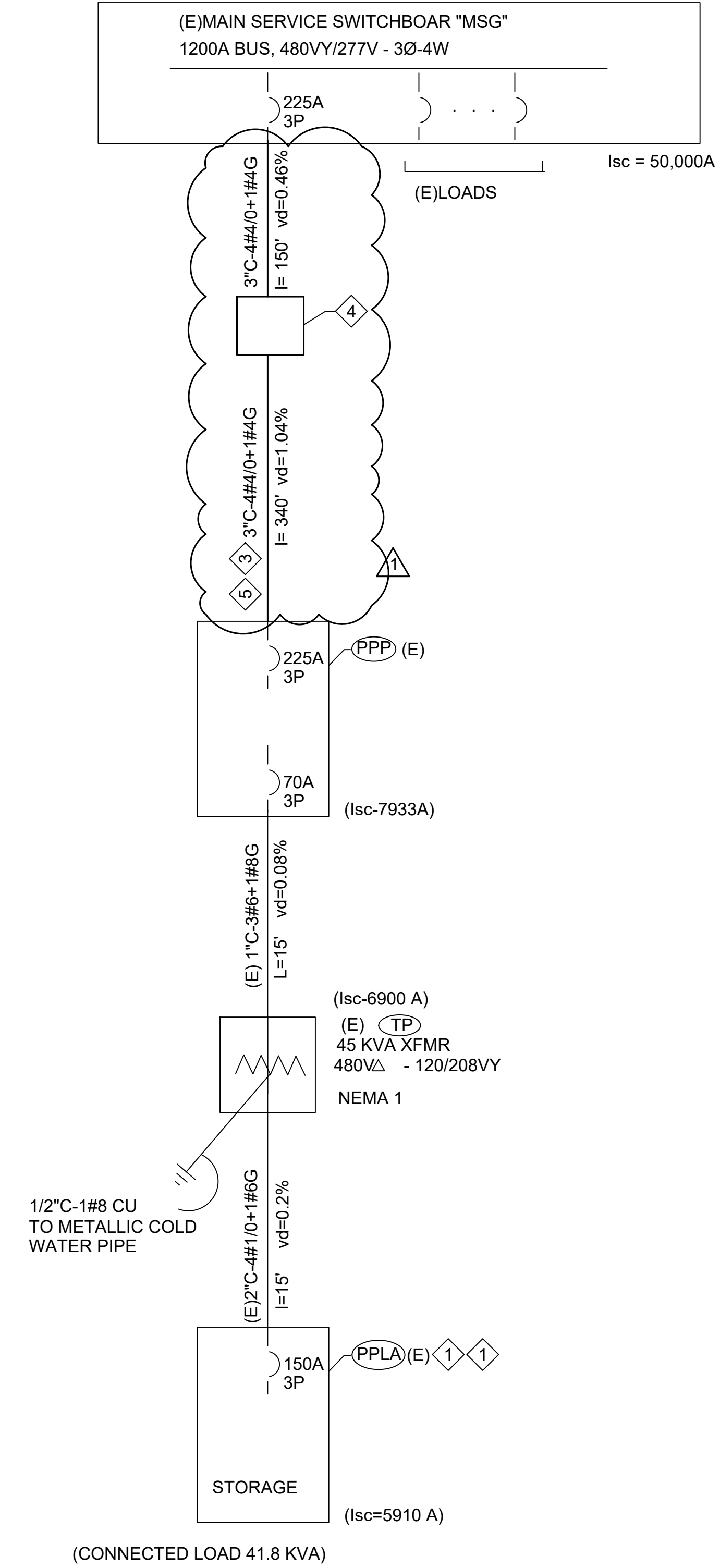
1. BEFORE PERFORMING ANY SAW CUTTING AND/OR ANY EXCAVATION ON EXISTING SURFACES OBTAIN A COPY OF THE ELECTRICAL AS-BUILT TO ASCERTAIN INFO. OF CONCEALED CONDUIT RUNS. IF AS-BUILT ELECTRICAL DRAWINGS ARE NOT AVAILABLE, CONTRACTOR SHOULD ENGAGE SERVICES OF SPECIALIZED CONTRACTORS TO LOCATE CONCEALED CONDUIT RUNS VIA X-RAY AND/OR RADAR CONDUITS LOCATOR.
2. WHERE APPLICABLE, CONTRACTOR SHALL CONTACT DIG-ALERT ORGANIZATION PRIOR TO INSTALLATION OF ANY UNDERGROUND WORK FOR LOCATING OF THE UNDERGROUND UTILITIES.
3. WHEN TRENCHING FOR NEW UNDERGROUND CONDUITS, EXERCISE CARE TO AVOID DAMAGE TO EXISTING UNDERGROUND UTILITIES.
4. CONDUITS MAY BE SHOWN OFFSET FOR DRAWING CLARITY. ALL FINAL UNDERGROUND CONDUIT RUNS MUST BE REFLECTED ON THE AS-BUILT.
5. LABEL ALL CONDUCTORS IN PULL BOXES.

6. PROVIDE PLASTIC WRNING TAPE 12" ABOVE ELECTRICAL CONDUITS IN THE ENTIRE LENGTH OF THE TRENCH. TAPE SHALL BE POLYETHYLENE PLASTIC MANUFACTURED FOR WARNING AND IDENTIFICATION.
7. PROVIDE ALL EMPTY CONDUITS WITH PULLSTRING.
8. LABEL BOTH ENDS OF THE ELECTRICAL CONDUIT WITH THE LOCATION OF THE OTHER END.

WALL MOUNT FIXTURE				
DESIGN /WATTS	LAMPS	DESCRIPTION	FINISH	MOUNTING
OF 1 24	LED 3500°K	LED: 13" DIA. 20W LED, POLY CARBONATE LENS, EYELID, WET LOCATION, KENALL: MR13ESR-PP-PP-DB-NAT-20L35K	WHITE	WALL

REFERENCED NOTES:

- ① EXISTING DAMAGED FEEDER TO PANEL "PPP" TO BE REPLACED. INTERCEPT EXISTING 3"CONDUIT. SAWCUT FLOOR AND INSTALL NEW 2X3" UNDERGROUND DRIVE OVER RATED PULLBOX DEPTH AS REQUIRED WITH FLUSH BOLT-DOWN METAL COVER TO READ "ELECTRICAL".VL. PATCH FLOOR TO MATCH EXISTING. PREVENT DAMAGE TO OTHER UNDERGROUND CONDUITS OR UTILITIES.
- ② INTERCEPT DAMAGED CONDUIT FEEDER IN POOL AREA AND ROUTE NEW 3" PVC CONDUIT AT 2' UNDERGROUND TO EXISTING PANEL "PPP". PROVIDE NEW 4#410-114 6" TO THE DIRECTOR OF CONDUIT RUN. MAKE ALL CONNECTIONS AT PANELS PER MANUFACTURER'S TORQUE LISTINGS.
- ③ REPLACE ANY DAMAGED CONDUIT WITH NEW 1/2"2C#12+1#12G.
- 3A) PROVIDE NEW 1/2"2C#12+1#12G, UNDERGROUND 24".
- ④ DISCONNECT AND REMOVE WALL MOUNTED LIGHT FIXTURE ON PILASTER BEING REMOVED. VERIFY PILASTER AND BRANCH CIRCUIT PRIOR WORK.
- ⑤ REPLACE EXISTING 13"DIA. WALL MOUNTED LIGHT FIXTURE WITH NEW WALL MOUNT FIXTURE "OF"1". MAKE ALL CONNECTIONS COMPLETE. ALL "OF"1" LIGHT FIXTURES TO BE CONNECTED TO CIRCUIT EMG-9.
- ⑥ PROVIDE NEW LIGHT FIXTURE "OF"1" ON NEW WALL IN LINE WITH EXISTING WALL MOUNTED LIGHT FIXTURES, APPROXIMATE 6' ABOVE GRADE. VL.





PANEL "PPLA" LOAD CALCULATIONS	
EXISTING LOAD ON PANEL "PPLA" OBTAINED FROM EXISTING DRAWINGS	38.78 KVA
LOAD INCREASE FOR NEW WORK.	3.0KVA
TOTAL CONNECTED LOAD:	41.78 KVA
41.78 KVA @ 120/208VY	116 A
SERVICE PROVIDED FROM TRANSFORMER @ 120/208VY	125 A

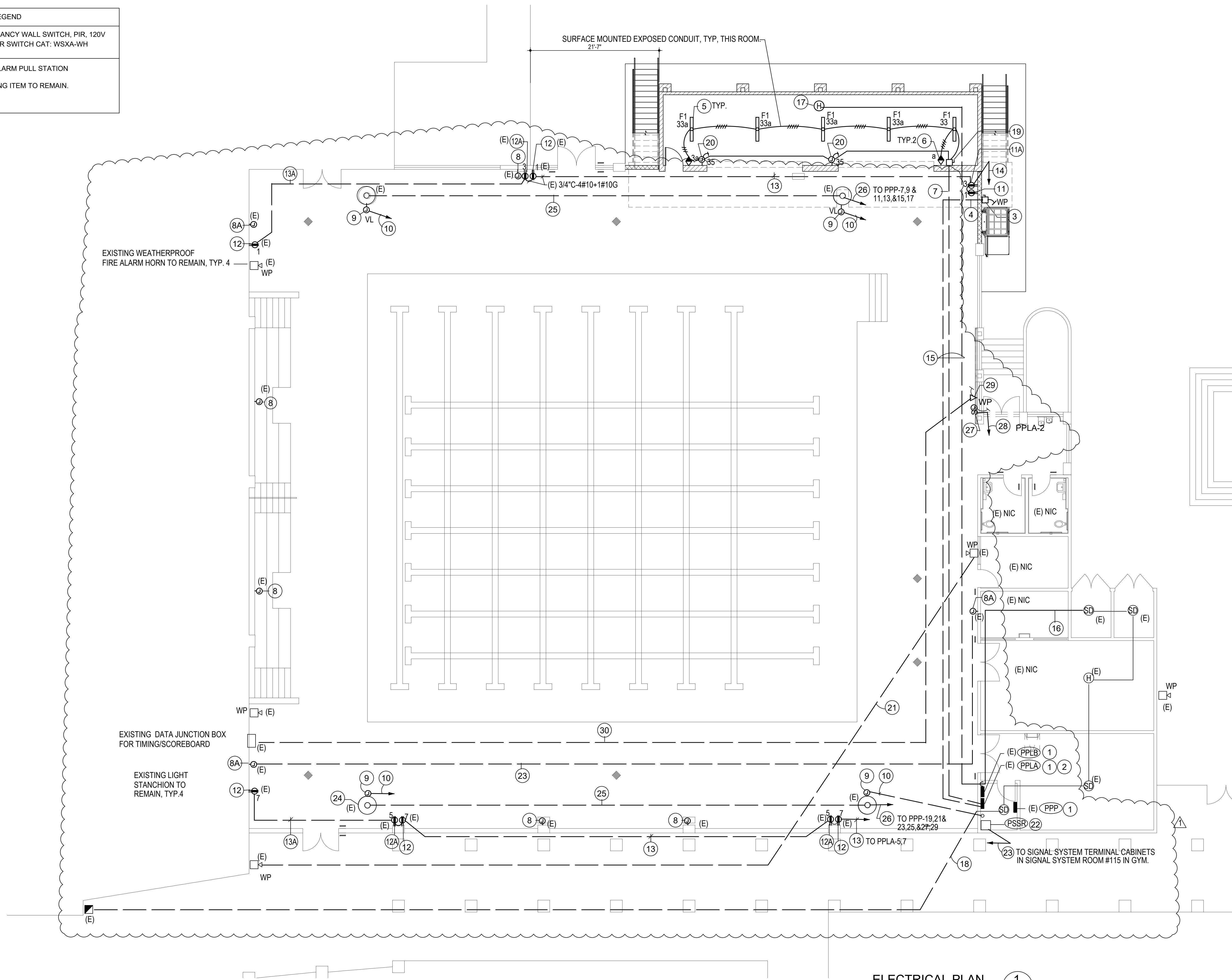
GENERAL NOTES:

1. ALL ITEMS ARE LISTED (UON).
2. INFORMATION REGARDING EXISTING CONDITIONS HAVE BEEN OBTAINED FROM THE AVAILABLE EXISTING DRAWINGS. CONTRACTOR MUST FIELD VERIFY ELECTRICAL CONDITIONS, PANEL AND CIRCUIT DESIGNATIONS PRIOR DOING ANY WORK. DISCREPANCIES, IF ANY, MUST BE REFLECTED ON THE AS-BUILT DRAWINGS.

REFERENCED NOTES:

1. PROVIDE NEW 15A, 1P CIRCUIT BREAKER IN SPACES #33 AND #35 TO MATCH EXISTING. UPDATE PANEL DIRECTORY WITH NEW LOAD. SEE PANEL SCHEDULE THIS SHEET FOR INFO.
2. PROVIDE NEW 20A, 1P CIRCUIT BREAKER IN SPACES #31 TO MATCH EXISTING. UPDATE PANEL DIRECTORY WITH NEW LOAD. SEE PANEL SCHEDULE THIS SHEET FOR INFO.
3. EXISTING DAMAGED FEEDER TO PANEL "PPP" TO BE REPLACED. INTERCEPT EXISTING 3" CONDUIT AND INSTALL NEW 2X3" UNDERGROUND DRIVE OVER RATED PULLBOX WITH FLUSH BOLT-DOWN METAL COVER.VL
4. REPLACE DAMAGED 3" CONDUIT IN POOL AREA TO PANEL "PPP". ROUTE 24' BELOW GRADE.
5. PROVIDE NEW 4#4/0+1#4G THE ENTIRE LENGTH OF THE CONDUIT FROM SWITCHBOARD "MSC" TO PANEL "PPP".

LEGEND	
	OCCUPANCY WALL SWITCH, PIR, 120V SENSOR SWITCH CAT: WSXA-WH
	FIRE ALARM PULL STATION
(E)	EXISTING ITEM TO REMAIN.



ELECTRICAL PLAN 1
SCALE: 1/8" = 1' - 0"

ASSISTIVE LISTENING SYSTEM

A. ASSISTIVE LISTENING SYSTEM SERVER

FURNISH AND INSTALL AN AUDIO OVER WI-FI ASSISTIVE LISTENING SYSTEM FOR USE IN CHALLENGING AUDIO ENVIRONMENTS AND FOR THE HEARING IMPAIRED. THE ASSISTIVE LISTENING SYSTEM (ALS) SHALL BE CAPABLE OF OPERATING IN THE 2.4 AND 5 GHZ UNLICENSED WI-FI BANDS ALLOWING LOW LATENCY STREAMING OF AUDIO FROM A LISTEN EVERYWHERE SERVER ACROSS A LOCAL AREA NETWORK TO DEDICATED WI-FI AUDIO RECEIVERS AND GUESTS' SMARTPHONES RUNNING THE LISTEN EVERYWHERE MOBILE APPLICATION. THE SYSTEM SHALL SUPPORT MOUNTING OF THE SERVER INTO A STANDARD 19" AUDIO RACK.

THE SYSTEM SHALL SUPPORT ENCRYPTED AND SECURE COMMUNICATIONS, EMPLOYING PASSCODE PROTECTED PRIVATE CHANNELS TO ENSURE COMPLETE CONFIDENTIALITY IN COMMUNICATION AND STREAMING. THE SYSTEM SHALL SUPPORT CUSTOMIZATIONS TO THE MOBILE APPLICATION USER INTERFACE USING A REMOTE CLOUD SERVICES PROGRAMMING INTERFACE. THE SYSTEM SHALL SUPPORT CUSTOM APP THEMES AND COLORS, CHANNEL NAMES AND LOGOS, WELCOME VIDEO ADS OR LOGOS, AND IN APP SLIDING BANNERS.

THE SYSTEM SHALL HAVE A SIGNAL-TO-NOISE RATIO OF 74 DB OR GREATER AND SHALL HAVE AN AUDIO FREQUENCY RESPONSE OF 20 HZ - 20 KHZ (±1 DB). THE SYSTEM SHALL HAVE AUDIO LATENCY OF LESS THAN 80MS. THE RECEIVERS SHALL FULLY CHARGE IN UNDER 2.5 HOURS AND HAVE A BATTERY RUN TIME OF OVER 30 HOURS.

B.) PORTABLE AUDIO RECEIVERS - PROVIDE 7 RECEIVERS (4% OF 157 SEATS)

THE DEVICE SHALL BE A DIGITAL RECEIVER OPERATING IN THE 2.4 AND 5 GHZ UNLICENSED WI-FI BANDS ALLOWING LOW LATENCY STREAMING OF AUDIO FROM A LISTEN EVERYWHERE SERVER ACROSS A LOCAL AREA NETWORK. THE DEVICE SHALL BE A PROVISIONED SMARTPHONE, LOCKED DOWN AND CONFIGURED STRICTLY FOR USE AS A WI-FI AUDIO RECEIVER, RUNNING THE LISTEN EVERYWHERE MOBILE APPLICATION WITH NO OTHER DEVICE SERVICES OR APPLICATIONS BEING ACCESSIBLE. THE DEVICE SHALL PROVIDE ACCESS TO WIFI NETWORK SETTINGS FROM THE HOME SCREEN. THE DEVICE SHALL PROVIDE A METHOD TO PAIR BLUETOOTH DEVICES FROM THE HOME SCREEN. CHANNEL SELECTION SHALL BE MADE VIA THE FRONT PANEL TOUCH DISPLAY VIA THE LISTEN EVERYWHERE APPLICATION. THE DEVICE SHALL PROVIDE EASY TO ACCESS VOLUME CONTROL USING THE SIDE VOLUME BUTTONS.

THE DEVICE SHALL SUPPORT ENCRYPTED AND SECURE COMMUNICATIONS, EMPLOYING PASSCODE-PROTECTED PRIVATE CHANNELS TO ENSURE COMPLETE CONFIDENTIALITY IN COMMUNICATION AND STREAMING. IT SHALL BE POWERED VIA A NON-REMOVABLE RECHARGEABLE LITHIUM-POLYMER BATTERY. THE DEVICE SHALL INCORPORATE AUTOMATIC BATTERY CHARGING CIRCUITRY TO CHARGE AND MAINTAIN THE LITHIUM-POLYMER BATTERY VIA THE USB-C PORT ON THE DEVICE. THE RECEIVER SHALL HAVE A 3.5 MM TRRS CTIA COMPLIANT HEADPHONE CONNECTION ALLOWING OPERATION WITH STANDARD STYLE HEADPHONES. IT SHALL HAVE A TOUCH DISPLAY WITH AUTO-DIMMING, ALLOWING DISPLAY OF THE LISTEN EVERYWHERE USER INTERFACE AS WELL AS BATTERY PERCENTAGE, WI-FI SIGNAL STRENGTH, CHARGING STATUS, AND VOLUME ADJUSTMENTS.

C.) ADVANCE NECK LOOP - PROVIDE 2 (25% OF TOTAL QUANTITY OF RECEIVERS)

D.) EAR SPEAKER - PROVIDE 7 (1 PER RECEIVER)

E.) PROTECTIVE CASE - PROVIDE 7 (1 PER RECEIVER)

F.) PROT USB-C CHARGER - PROVIDE 7 (1 PER RECEIVER)

FIXTURE SCHEDULE				
DESIG.	LAMPS	DESCRIPTION	FINISH	MOUNTING
F1	LED 4000LM 3500°K	LED 4' 3000LM STRIP LIGHT, WITH FLAT DIFFUSE LENS AND WIREGUARD, 120V, 80 CRI, 0-10V DIMMING	WHITE	CEILING
25	LITHONIA: CLX-L48-4000LM-SEF-FDL-120-GZ10-35K-80CRI-WH-WGCLX48WH			

- 1 - PROVIDE LIGHT FIXTURES AS SPECIFIED, 'NO SUBSTITUTES SHALL BE ALLOWED'
- 2 - ALL LIGHT FIXTURES ARE FOR 120V (UON).
- 3 - ALL LIGHTING FIXTURES TO BE TITLE 2024 CERTIFIED.

FIXTURE SCHEDULE 2
NTS

GENERAL NOTES

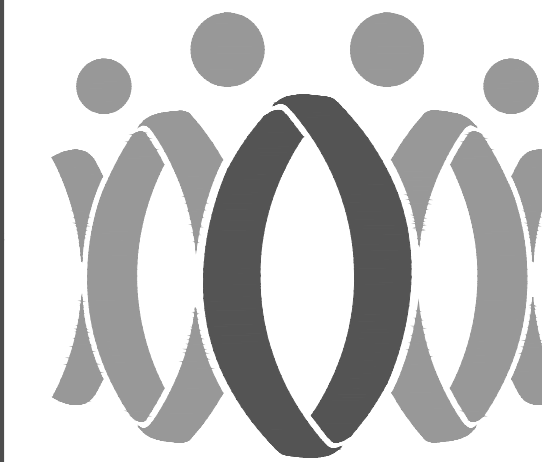
1. WIRING MAY BE SHOWN OFFSET FOR DRAWING CLARITY.
2. EQUIPMENT GROUNDING CONDUCTOR MUST BE PROVIDED WITH EACH BRANCH CIRCUIT WHETHER OR NOT SHOWN ON THE DRAWING.
3. ALL WIRING/CABLES TO BE RUN IN CONDUIT.
4. COORDINATE EXACT LOCATION OF EQUIPMENT WITH ARCHITECTURAL DRAWINGS AND EQUIPMENT SHOP DRAWINGS.
5. EXACT LOCATION OF ALL LIGHT FIXTURES SHALL BE COORDINATED WITH ARCHITECTURAL PLANS, NO EXCEPTIONS.
6. ALL LIGHTING CONTROL SWITCHES SHALL BE <48"(MAX).
7. ALL CONDUIT PENETRATIONS THROUGH WALL AND ROOF MUST BE FIREPROOFED AND OR WEATHERPROOFED.
8. FIRE ALARM SYSTEMS EXISTING.
9. INFORMATION REGARDING EXISTING CONDITIONS HAVE BEEN OBTAINED FROM THE BEST SOURCES AVAILABLE. CONTRACTOR MUST FIELD VERIFY PANEL DESIGNATIONS AND CIRCUIT IDENTIFICATIONS PRIOR DOING ANY WORK. DISCREPANCIES, IF ANY, MUST BE REFLECTED ON THE AS-BUILT DRAWINGS.
10. ROUTE CONDUIT UNDERGROUND 24" (MIN).
11. MAINTAIN 12" (MIN) SEPARATION BETWEEN POWER AND COMMUNICATION CONDUITS.
12. ALSO SEE SHEET E1.00 DETAIL #4 PARTIAL SITE PLAN AND GENERAL NOTES.

REFERENCED NOTES:

- 1 EXISTING PANEL.
- 2 PROVIDE NEW 15A, 1P 120V, CIRCUIT BREAKERS IN SPACES #33, #35 AND NEW 20A, 1P, 120V CIRCUIT BREAKER IN SPACE #31 TO MATCH EXISTING.
- 3 PROVIDE WEATHERPROOF 30A, 2 POLE, 120V DISCONNECT SWITCH FOR VERTICAL LIFT, VERIFY LOCATION. MAKE ALL CONNECTIONS COMPLETE PER EQUIPMENT INSTALLATION INSTRUCTIONS.
- 4 HOMERUN 1" C-2#8-1#8 GND TO "PPLA" - 31". ROUTE UNDERGROUND 24"
- 5 SURFACE MOUNT LIGHT FIXTURE TO CONCRETE CEILING DECK. LIGHT FIXTURE WEIGHT APPROX. 5 LBS.
- 6 OCCUPANCY SENSOR SWITCH.
- 7 HOMERUN 1" C-4#10-1#10 GND TO CIRCUITS PPLA-33 AND PPLA-35. ROUTE UNDERGROUND 24"
- 8 EXISTING FLUSH MOUNTED SPEAKER JUNCTION BOX TO BE ABANDONED. PROVIDE WEATHERPROOF COVER TO SEAL JUNCTION BOX.
- 8A EXISTING FLUSH MOUNTED SPEAKER JUNCTION BOX FOR SCHOOL PA SYSTEM TO REMAIN. PROTECT IN PLACE DURING CONSTRUCTION.
- 9 PROVIDE WEATHERPROOF JUNCTION BOX FOR NEW SPEAKER. MOUNT ON LIGHT POLE BRACKET, VL.
- 10 ROUTE 1 1/4" CONDUIT FROM JUNCTION BOX TO ELECTRICAL ROOM NEAR SOUND SYSTEM RACK NOTE #22. PROVIDE ALL NECESSARY SUPPORT FOR ROUTING CONDUIT UP LIGHT POLE TO JUNCTION BOX.
- 11 RELOCATED RECEPTACLE LOCATION. PROVIDE NEW WEATHER RESISTANT 20A, 120V, GFCI DUPLEX RECEPTACLE WITH EXTRA-DUTY WEATHERPROOF IN USE RECEPTACLE COVER.
- 11A RELOCATED RECEPTACLE LOCATION. PROVIDE NEW WEATHER RESISTANT NEMA 5-30 RECEPTACLE WITH EXTRA-DUTY WEATHERPROOF IN USE RECEPTACLE COVER.
- 12 EXISTING NEMA 5-20 WEATHERPROOF RECEPTACLE. MAINTAIN CIRCUIT CONTINUITY. VERIFY BRANCH CIRCUIT PRIOR WORK.
- 12A EXISTING NEMA 5-30 WEATHERPROOF RECEPTACLE. MAINTAIN CIRCUIT CONTINUITY. VERIFY BRANCH CIRCUIT PRIOR WORK.
- 13 REPLACE DAMAGED 3/4" CONDUIT AND PROVIDE NEW 4#10-1#10 GROUND WIRE TO MAINTAIN CIRCUIT. CONTINUITY TO DOWNSTREAM RECEPTACLES. BRANCH CIRCUITS TO HAVE SEPARATE NEUTRALS.
- 13A REPLACE DAMAGED 3/4" CONDUIT AND PROVIDE NEW 2#10-1#10 GROUND WIRE TO MAINTAIN CIRCUIT. CONTINUITY TO DOWNSTREAM RECEPTACLE.
- 14 PROVIDE NEW 3/4" C-4#10-1#10 GND HOMERUN TO PANEL "PPLA" FOR CIRCUIT #1 AND #3.
- 15 ROUTE CONDUIT UNDERGROUND AT 24".
- 16 EXTEND EXISTING FIRE ALARM SIGNALLING CIRCUIT IN CONDUIT FROM EXISTING HEAT DETECTOR TO NEW HEAT DETECTOR IN STORAGE ROOM. SEE FIRE ALARM NOTES AND DETAILS ON E3.00 FOR INFO.
- 17 PROVIDE NEW HEAT DETECTOR COMPATIBLE WITH EXISTING FIRE ALARM SYSTEM.
- 18 EXISTING 3/4" CONDUIT AND (2) 2#16 UNSHIELDED TO FIRE ALARM PULL STATION AT GYM. REPAIR CONDUIT AS REQUIRED AND PROVIDE NEW FIRE (2) 2#16 FPL STRANDED TWISTED SHIELDED CABLE. ALL FIRE ALARM OUTDOOR AND UNDERGROUND SHALL BE "AQUA-SEAL" (AOC RATED).
- 19 30A, 240V, 3 POLE DISCONNECT SWITCH IN NEMA 1 ENCLOSURE TO DISCONNECT ALL UNDERGROUND CONDUCTORS INTO THE BUILDING. PROVIDE SQUARE "D" CAT # DU321.
- 20 PROVIDE JUNCTION BOX FOR CONNECTION TO ROLL UP DOOR MOTOR. MAKE ALL CONNECTION TO PUSH BUTTON KEYSWITCH CONTROLS, MOTOR, DOOR SENSING AND SAFETY DEVICES PER MANUFACTURER'S INSTALLATION INSTRUCTIONS COMPLETE.
- 21 EXISTING 3/4" CONDUIT AND 4#10 TO OUTDOOR WEATHERPROOF FIRE HORN AT GYM. REPAIR CONDUIT AS REQUIRED AND PROVIDE NEW 4#10 CONDUCTORS BETWEEN EXISTING WEATHERPROOF HORNS TO RESTORE FIRE ALARM SYSTEM INTEGRITY. MAKE ALL CONNECTIONS COMPLETE.
- 22 EXISTING SOUND SYSTEM/PA RACK.
- 23 EXISTING 1" C- WITH INTERCONNECTION CABLES TO PA/IC/TEL CABINETS IN GYM SIGNAL ROOM #115A. REPAIR DAMAGED CONDUIT AND PROVIDE NEW CABLES AS REQUIRED.
- 24 EXISTING COMPETITION LIGHTING STANDARDS (TYPICAL OF 4).
- 25 PROVIDE NEW 3/4" C-6#10-1#10 G BRANCH CIRCUIT WIRING IF DAMAGED. MAINTAIN LIGHTING ZONES WIRING VIA LIGHTING CONTROL PANEL. FIELD VERIFY BRANCH CIRCUIT PRIOR WORK.
- 26 PROVIDE NEW 1" C-6#10-1#10 G HOMERUN TO PANEL PPP IF DAMAGED. MAINTAIN LIGHTING ZONES WIRING VIA LIGHTING CONTROL PANEL. FIELD VERIFY BRANCH CIRCUIT PRIOR WORK.
- 27 PROVIDE WEATHERPROOF LOCAL DISCONNECT, 120V, 2P FOR NEW SCOREBOARD, VL. INSTALL SCOREBOARD PER MANUFACTURER'S SHOP DRAWINGS AND INSTRUCTIONS. PROVIDE GROUNDING AND ALL CONNECTIONS COMPLETE FOR AN OPERATIONAL SYSTEM.
- 28 ROUTE 3/4" C-2#12-1#12 HOMERUN DOWN WALL AND UNDERGROUND 18" TO PANEL. RE USE "PPLA" CIRCUIT #2.
- 29 WEATHERPROOF 4 11/16" SQUARE BOX FOR SCOREBOARD DATA WIRING AND CONNECT CONDUIT AND DATA WIRING PER MANUFACTURER'S SHOP DRAWING INSTALLATION REQUIREMENTS.
- 30 PROVIDE 1" CONDUIT ONLY FROM EXISTING DATA JUNCTION BOX TO NEW SCOREBOARD. ROUTE CONDUIT UNDERGROUND 24". PROVIDE CABLES PER SCOREBOARD MANUFACTURER'S SHOP DRAWINGS AND MAKE ALL CONNECTIONS COMPLETE.

AGENCY

PTN_64337-111 APPL_03-123187



FLEWELLING & MOODY
architecture planning interiors

HEADQUARTERS OFFICE:

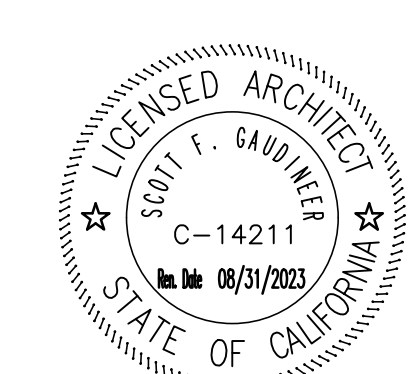
815 Colorado Blvd, Suite 200
Los Angeles, CA 90041
323.543.8300
E-Mail: fm-pasadena@flewelling-moody.com

ANTELOPE VALLEY OFFICE:

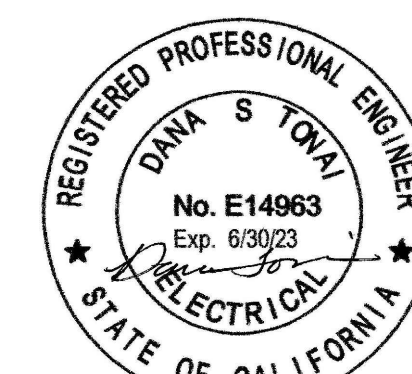
1035 West Lancaster Boulevard
Lancaster, California 93534
661.948.0771
E-Mail: fm-lancaster@flewelling-moody.com

An Employee Owned Corporation

ARCHITECT



CONSULTANT



Parviz Ebrahimi, Inc.

Consulting Electrical Engineers
25101 THE OLD ROAD
SANTA CLARITA, CALIFORNIA 91381
tel.: (818) 991-7371
email: pelnc.info@earthlink.net

Drawn by

DT

Checked by

DT

Revisions

No.	Date	Description
1	09-12-24	addendum 1

All dimensions must be checked at the job by the contractor who accepts full responsibility for their accuracy under the contract. These plans & the specifications in connection therewith have been prepared for a specific site. Any and all responsibility for their use in whole or in part on any other site is hereby disclaimed by Flewelling & Moody.

BURBANK UNIFIED SCHOOL DISTRICT

BURBANK HIGH SCHOOL AQUATIC CENTER STORAGE BUILDING

902 NORTH 3RD STREET
BURBANK, CA 91502

ELECTRICAL PLAN AND FIXTURE SCHEDULE

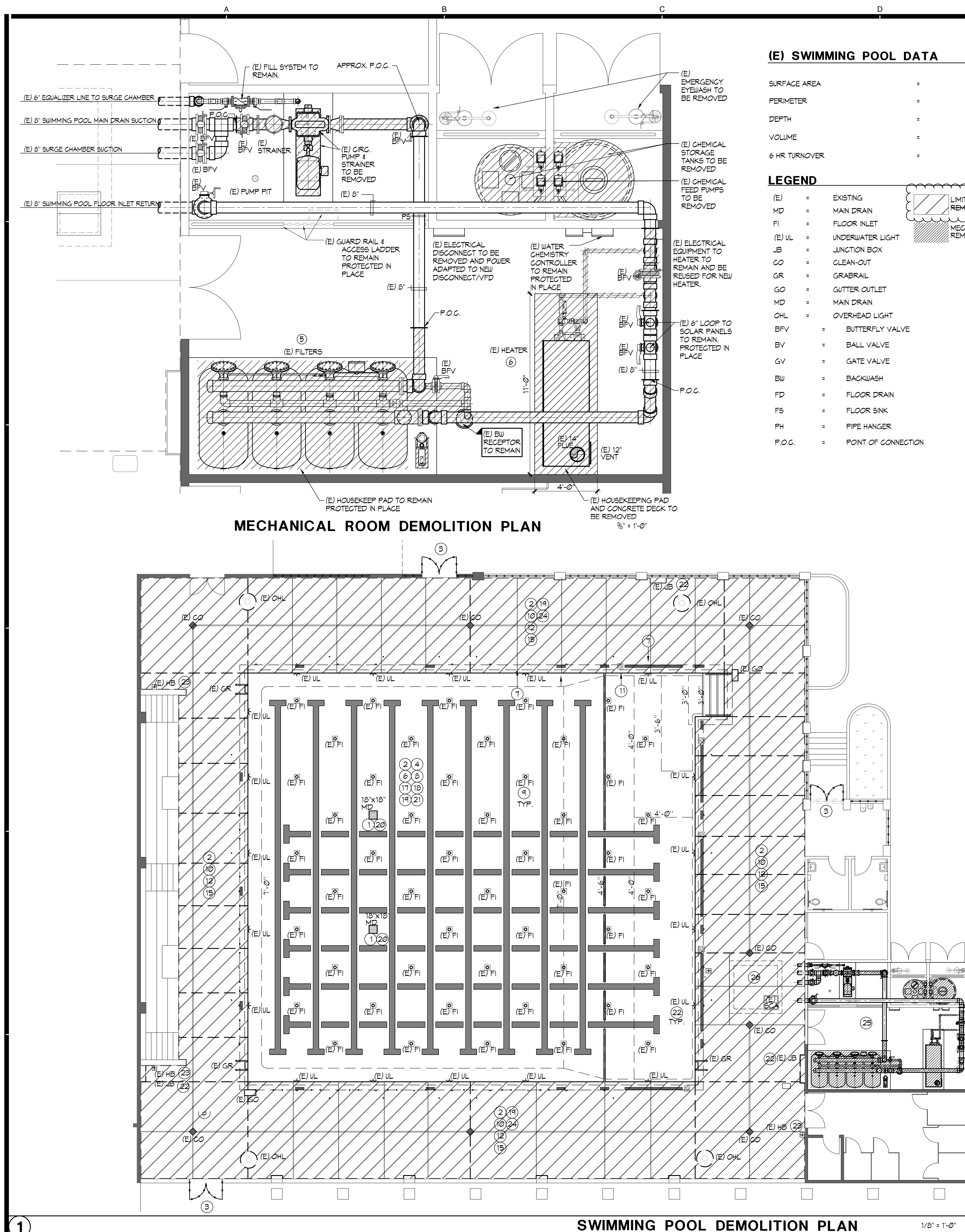
Job No.

2986.0100

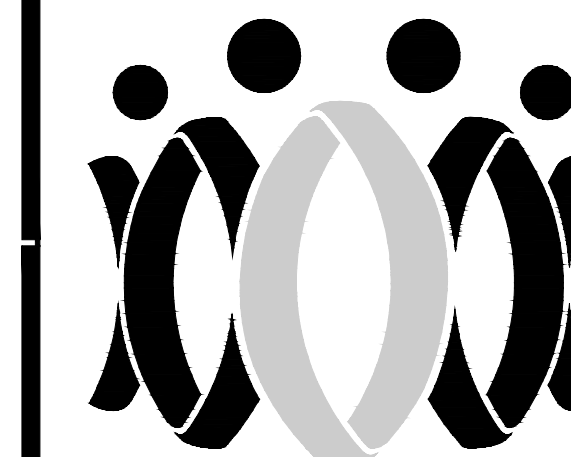
Date

04-14-2023

E2.00



ARCHITECT



FLEWELLING & MOODY
architecture planning interiors

HEADQUARTERS OFFICE:
815 Colorado Blvd., Suite 200
Los Angeles, CA 90041
323.543.8300
E-Mail: fm-pasadena@flewelling-moody.com

ANTELOPE VALLEY OFFICE:
1035 West Lancaster Boulevard
Lancaster, California 93534
661.949.0771
E-Mail: fm-lancaster@flewelling-moody.com

An Employee Owned Corporation

CONSULTANT



Drawn by: NMV
Checked by: GSF

No. 09/12/2024 Description: ADDENDUM 1

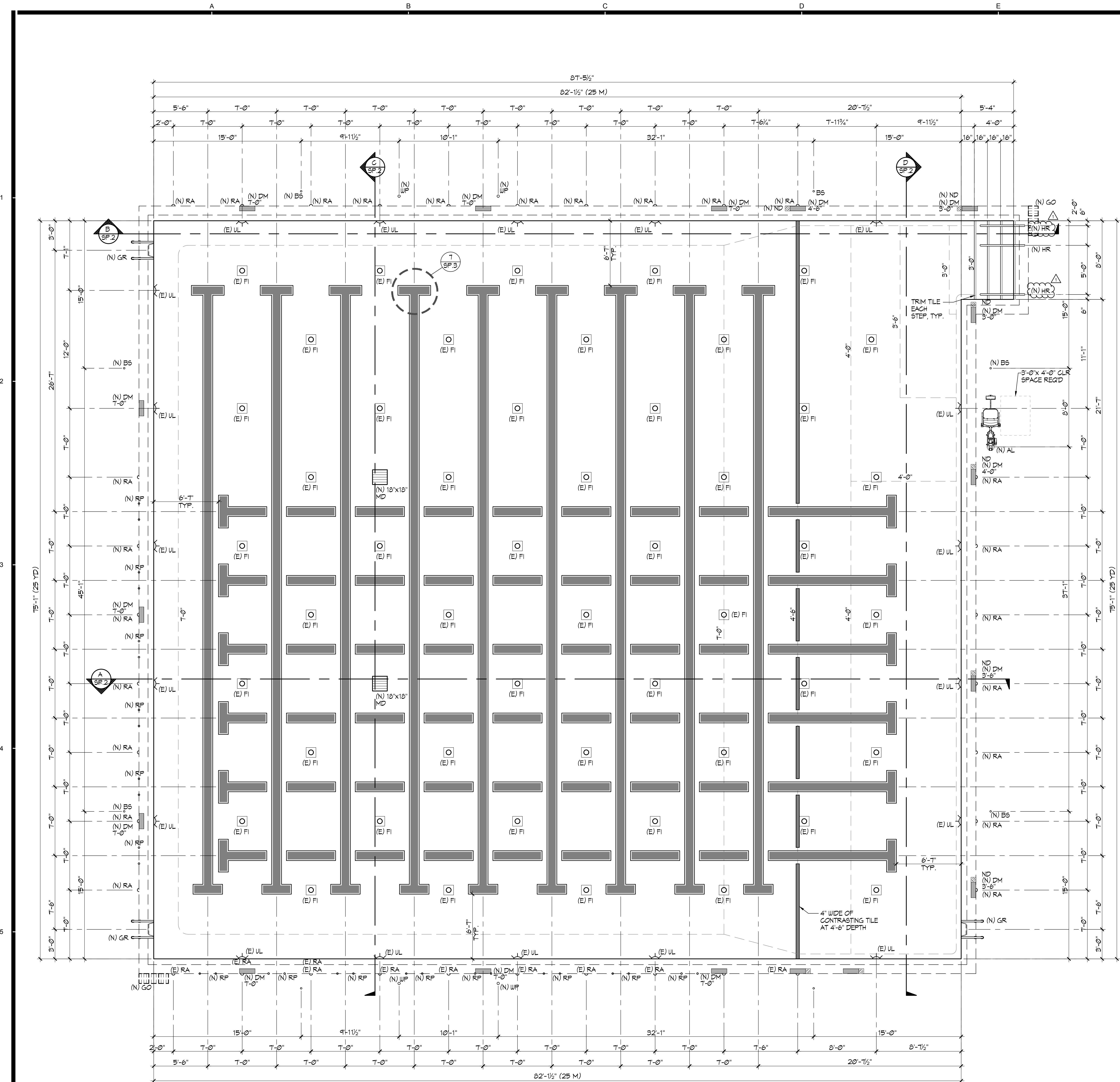
All dimensions must be checked at the job by the contractor who accepts full responsibility for their accuracy under the contract. These plans & the specifications in connection therewith have been prepared for a specific site. Any and all responsibility for their use in whole or in part on any other site is hereby disclaimed by Flewelling & Moody.

BURBANK UNIFIED
SCHOOL DISTRICT
BURBANK
HIGH SCHOOL
AQUATIC CENTER
MODERNIZATION
902 NORTH 3RD STREET
BURBANK, CA 91502

SWIMMING POOL
DEMOLITION PLAN

Job No. 2986.0000
Date 11-18-2022

DP.1



(E) SWIMMING POOL DATA

SURFACE AREA	=	6,209 SQ. FT.
PERIMETER	=	325 FT.
DEPTH	=	3'-0" TO 7'-3"
VOLUME	=	302,000 GAL.
6 HR TURNOVER	=	840 GPM

LEGEND

UL	=	UNDERWATER LIGHT
X MD	=	MAIN DRAIN
GR	=	GRABRAIL
DM	=	DEPTH MARKER
NR	=	'NO RUNNING'
ND	=	'NO DIVING'
RA	=	ROPE ANCHOR
RP	=	RACING PLATFORM
BS	=	BACKSTROKE STANCHION
HR	=	HANDRAIL
AL	=	ACCESSIBLE LIFT
GO	=	GUTTER OUTLET
WP	=	WATER POLO GOAL
(E)	=	EXISTING
(N)	=	NEW

GENERAL NOTES

- COORDINATE SIGNAGE PLACEMENT WITH HEALTH DEPT PRIOR TO INSTALLATION.
- DECKS SHALL HAVE 1.5% MIN. SLOPE AND 1.0% MAX. SLOPE TO DRAINS.
- ALL POOL DECKING SHALL BE NON-SLIP AND NON-ABRASIVE MEDIUM BROOM FINISH WITH MIN. 4 FOOT WIDTH TYP. NATURAL GRAY CONCRETE UNLESS OTHERWISE NOTED.
- FIRE SAFETY DURING CONSTRUCTION AND DEMOLITION SHALL BE IN CONFORMANCE WITH CFC CHAPTER 93

AGENCY

PTN_64337-110 APPL_03-122682

FLEWELLING & MOODY
architecture planning interiors

HEADQUARTERS OFFICE:
815 Colorado Blvd, Suite 200
Los Angeles, CA 90041
323.543.8300
E-Mail: fm-pasadena@flewelling-moody.com

ANTELOPE VALLEY OFFICE:
1035 West Lancaster Boulevard
Lancaster, California 93534
661.949.0771
E-Mail: fm-lancaster@flewelling-moody.com

An Employee Owned Corporation

ARCHITECT

AQUATIC
DESIGN GROUP

2226 Faraday Ave. Carlsbad, CA 92008
AquaticDesignGroup.com
760.438.8400

CONSULTANT

Drawn by: NMV
Checked by: GSF
Reviewed by: [Signature]
Date: 09/12/2024
Description: ADDENDUM 1

All dimensions must be checked at the job by the contractor who accepts full responsibility for their accuracy under the contract. These plans & the specifications in connection therewith have been prepared for a specific site. Any and all responsibility for their use in whole or in part on any other site is hereby disclaimed by Flewelling & Moody.

BURBANK UNIFIED SCHOOL DISTRICT
BURBANK HIGH SCHOOL
AQUATIC CENTER
MODERNIZATION

902 NORTH 3RD STREET
BURBANK, CA 91502

SWIMMING POOL LAYOUT PLAN

Job No: 2986.0000
Date: 11-18-2022

SP.1



SWIMMING POOL LAYOUT PLAN

1/4" = 1'-0"