

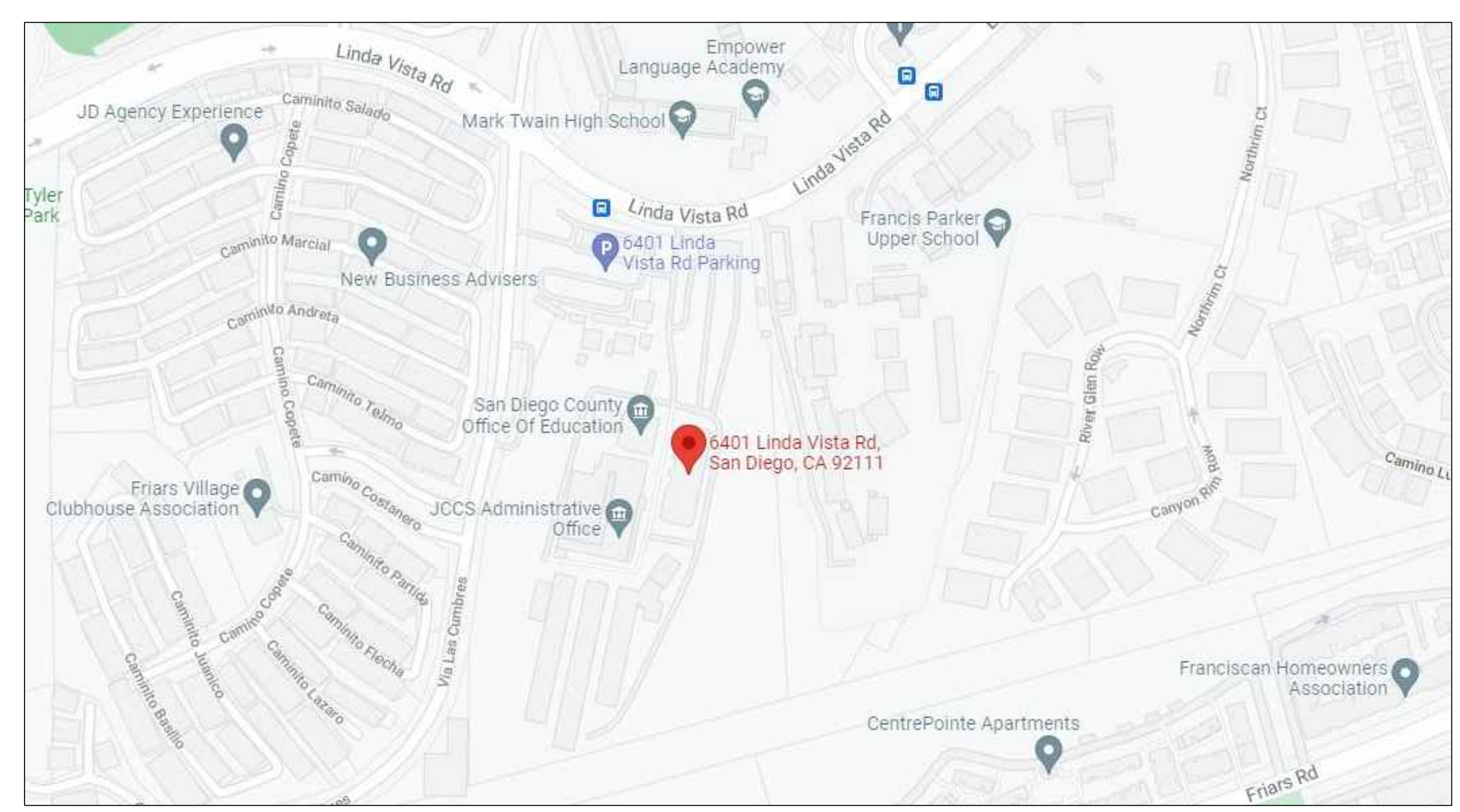
SDCOE BUILDING #3 1ST FLOOR HEAT PUMP REPLACEMENT

**6401 LINDA VISTA RD
 SAN DIEGO, CALIFORNIA 92111**

**SAN DIEGO COUNTY OFFICE OF
 EDUCATION BLDG #3**

6401 LINDA VISTA RD, SAN DIEGO, CA 92111
 1ST FLOOR HEAT PUMP REPLACEMENT

VICINITY MAP



PROJECT SCOPE

REPLACEMENT OF THE BOILER SERVING THE WATER SOURCE HEAT PUMP SYSTEM IN BUILDING 300 AT THE SAN DIEGO COUNTY OFFICE OF EDUCATION LINDA VISTA CAMPUS.

APPLICABLE CODES

APPLICABLE CODES: DIVISION OF THE STATE ARCHITECT AS OF JANUARY 1, 2023*

- 2022 CALIFORNIA BUILDING STANDARDS ADMINISTRATIVE CODE, PART 1, TITLE 24 C.C.R.*
- 2022 CALIFORNIA ADMINISTRATIVE CODE (CAC), PART 1, TITLE 24 CCR
- 2022 CALIFORNIA BUILDING CODE (CBC), PART 2, TITLE 24 C.C.R.
- (2021 INTERNATIONAL BUILDING CODE OF THE INTERNATIONAL CODE COUNCIL, VOLUMES 1-2 WITH CALIFORNIA AMENDMENTS)
- 2022 CALIFORNIA ELECTRICAL CODE (CEC), PART 3, TITLE 24 C.C.R. (W/ CA AMENDMENTS)
- (2020 NATIONAL ELECTRICAL CODE OF THE NATIONAL FIRE PROTECTION ASSOCIATION, NFPA)
- 2022 CALIFORNIA ENERGY CODE PART 6, TITLE 24, C.C.R. FOR ENERGY COMPLIANCE.*
- 2022 CALIFORNIA FIRE CODE (CFC) PART 9, TITLE 24 C.C.R. (W/ CA AMENDMENTS)
- (2021 INTERNATIONAL FIRE CODE OF THE INTERNATIONAL CODE COUNCIL)
- 2022 CALIFORNIA EXISTING BUILDING CODE (CEBC), PART 10, TITLE 24 CCR
- 2022 CALIFORNIA GREEN BUILDING STANDARDS CODE (CALGREEN), PART 11, TITLE 24 CCR
- 2022 CALIFORNIA REFERENCED STANDARDS, PART 12, TITLE 24 C.C.R. TITLE 19 C.C.R., PUBLIC SAFETY, STATE FIRE MARSHALL REGULATIONS.

GENERAL NOTES

1. THE CONTRACTOR SHALL VERIFY THE SITE BEFORE COMMENCING WORK. CONTRACTOR SHALL VERIFY ALL DIMENSIONS AND CONDITIONS AT THE JOB SITE AND NOTIFY THE ENGINEER OF ANY DISCREPANCIES FOUND PRIOR TO THE START OF CONSTRUCTION.
2. LOCATION OF EXISTING UTILITIES SHOWN ON THESE DRAWINGS WERE OBTAINED FROM AVAILABLE DISTRICT RECORDS. THE CONTRACTOR IS ADVISED THAT THERE MAY EXIST UNDERGROUND UTILITIES NOT SHOWN ON THESE DRAWINGS. CONTRACTOR SHALL EXERCISE PRECAUTION TO PROTECT THESE UTILITIES IN PLACE.
3. CONTRACTOR SHALL VERIFY LOCATIONS OF EXISTING UTILITIES. CONTACT AT LEAST TWO (2) WORKING WEEKS PRIOR TO START WORK.

LOCATION MAP



SHEET INDEX

SHEET NUMBER	SHEET TITLE
G001	COVER SHEET
M001	ABBREVIATIONS, LEGEND & GENERAL NOTES
M002	SCHEDULES
M201	BUILDING 300 OVERALL PLAN
M202	BLDG 300 MECHANICAL ROOM ENLARGED RENOVATION AND DEMOLITION
M501	DETAILS
M601	DIAGRAMS
E001	ABBREVIATION, LEGEND
E002	GENERAL NOTES
E201	BUILDING 300 OVERALL PLAN
E202	BLDG 300 MECHANICAL ROOM ENLARGED RENOVATION
E601	SINGLE LINE DIAGRAMS

BSE Project No.: 24-0293-1049



Num	Description	Date

COVER SHEET

G001

FILE NAME: K:\PROJECTS\SDCOE - 0293\24-1049 SDCOE LV BLDG 300 BOILER PROJ.DWG\$\$.CAD V2024X21-0293-1134-G001.DWG PLOT DATE: 6/20/2024 3:47 PM PRINT BY: JORDAN KATZ

HEATING HOT WATER BOILER

MARK	SERVICE	LOCATION	BASIS OF DESIGN		PERFORMANCE DATA									COORDINATION DATA			REMARKS	
			MANUFACTURER	MODEL	FUEL TYPE	OPERATING PRESSURE [IN. WC]	INPUT [MBH]	OUTPUT [MBH]	FLOWRATE [GPM]	WATER DELTA T [°F]	BOILER DP [FT HD]	PRIMARY PUMP HP	PRIMARY PUMP V/PH/HZ	ELECTRICAL DATA		DIMENSIONS (HXWXL) [INXINXIN]		OPERATING WEIGHT [LBS]
														V/PH/HZ	AMPS			
B-1	WSHP SYSTEM	MECHANICAL ROOM 112	RAYPAK	H-902C	NATURAL GAS	5.6-10.5	900	756	76	20	8.3	0.5	120/1/60	120/1/60	15	31.25"x78"x24.625"	740	-

FILE NAME: K:\PROJECTS\SDCOE - 0293\24-1049 SDCOE LV BLDG 300 BOILER PROJ\DWGS\CAD V20XX\MECH\M002.DWG PLOT DATE: 6/20/2024 3:47 PM PRINT BY: JORDAN KATZ

**SAN DIEGO COUNTY OFFICE OF
 EDUCATION BLDG #3**

6401 LINDA VISTA RD. SAN DIEGO, CA 92111
1ST FLOOR HEAT PUMP REPLACEMENT

BSE Project No.: 24-0293-1049

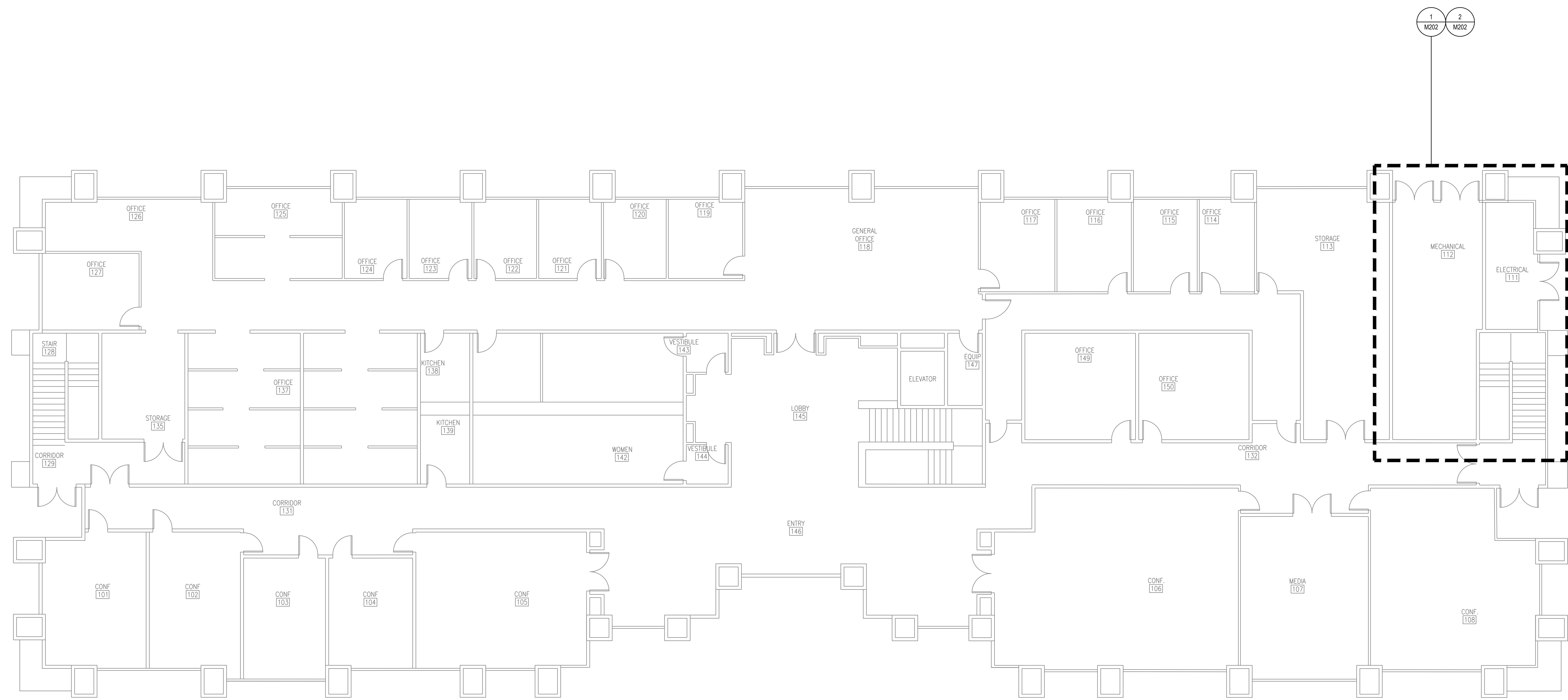


NOT FOR CONSTRUCTION

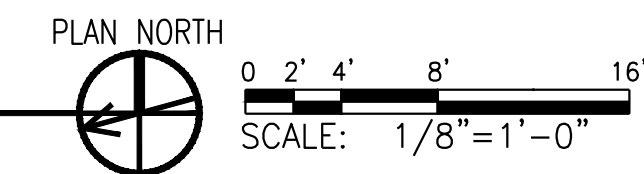
Num	Description	Date

SCHEDULES

FILE NAME: K:\PROJECTS\SDCOE - 0293\24-1049 SDCOE IV BLDG 300 BOILER PROJ\DWGS\CAD V20XX\MECH\M201.DWG PLOT DATE: 6/20/2024 3:47 PM PRINT BY: JORDAN KATZ



1 BUILDING 300 OVERALL PLAN



**SAN DIEGO COUNTY OFFICE OF
 EDUCATION BLDG #3**

6401 LINDA VISTA RD, SAN DIEGO, CA 92111
1ST FLOOR HEAT PUMP REPLACEMENT

BSE Project No.: 24-0293-1049



Num	Description	Date

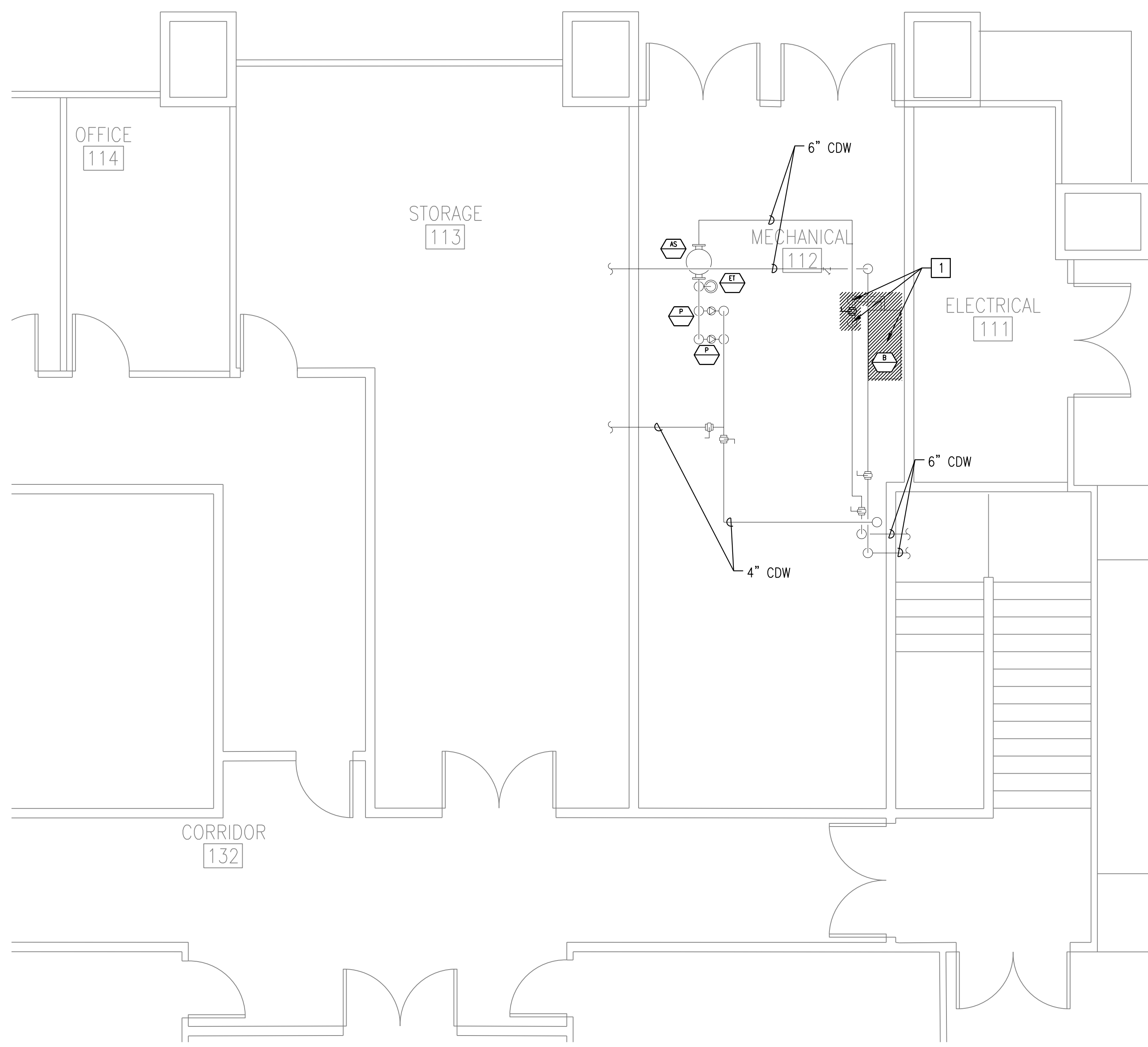
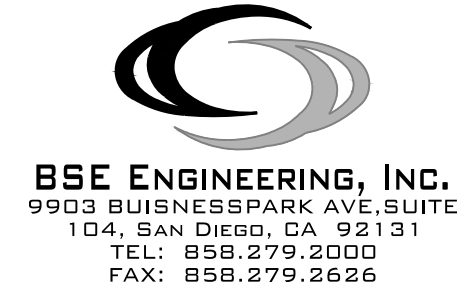
**BUILDING 300
 OVERALL PLAN**

M201

FILE NAME: K:\PROJECTS\SDCOE - 0293\24-1049 SDCOE LV BLDG 300 BOILER PROJ\DWGS\CAD V20XX\MECH\M202.DWG PLOT DATE: 6/20/2024 3:47 PM PRINT BY: JORDAN KATZ

DETAIL NOTES:

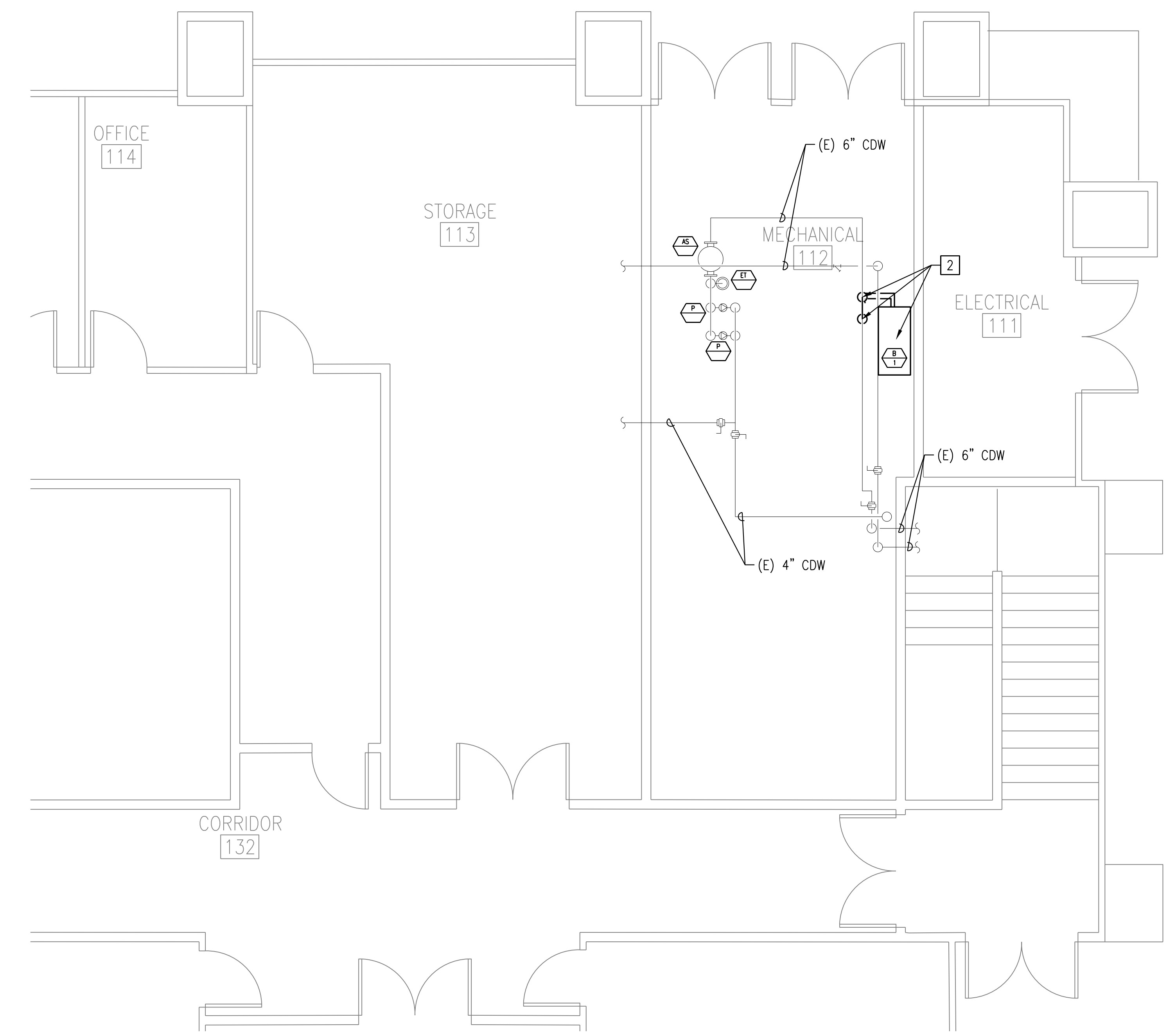
- POD FOR 2-1/2" CDW PIPE TO BOILER TO BE REMOVED. REMOVE ALL PIPING, APPURTENANCES AND CONTROL DEVICES BETWEEN PODS SHOWN AND BOILER TO BE REMOVED AS SHOWN ON DETAIL 1/M601. DISCONNECT AND PROTECT IN PLACE THE BOILER FLUE FOR RECONNECTION TO NEW BOILER.
- POC FOR 2-1/2" CDW PIPE TO BOILER B-1. PROVIDE APPURTENANCES AND CONTROL DEVICES AS SHOWN ON DETAIL 2/M601. CONNECT (E) BOILER FLUE TO BOILER B-1 PER THE MANUFACTURER'S WRITTEN INSTALLATION INSTRUCTIONS.



1 ENLARGED DEMOLITION PLAN

PLAN NORTH

SCALE: 1/4" = 1'-0"



2 ENLARGED RENOVATION PLAN

PLAN NORTH

SCALE: 1/4" = 1'-0"

SAN DIEGO COUNTY OFFICE OF
 EDUCATION BLDG #3

1ST FLOOR HEAT PUMP REPLACEMENT

6401 LINDA VISTA RD. SAN DIEGO, CA 92111

BSE Project No.: 24-0293-1049



Num	Description	Date

BLDG 300 MECHANICAL ROOM ENLARGED RENOVATION AND DEMOLITION

M202

© BSE ENGINEERING, INC.

FILE NAME: K:\PROJECTS\SDCOE - 0293\24-1049 SDCOE LV BLDG 300 BOILER PROJ.DWG\$ CAD V20XX\MECH\M501.DWG PLOT DATE: 6/20/2024 3:48 PM PRINT BY: JORDAN KATZ

SAN DIEGO COUNTY OFFICE OF
EDUCATION BLDG #3

6401 LINDA VISTA RD. SAN DIEGO, CA 92111

1ST FLOOR HEAT PUMP REPLACEMENT

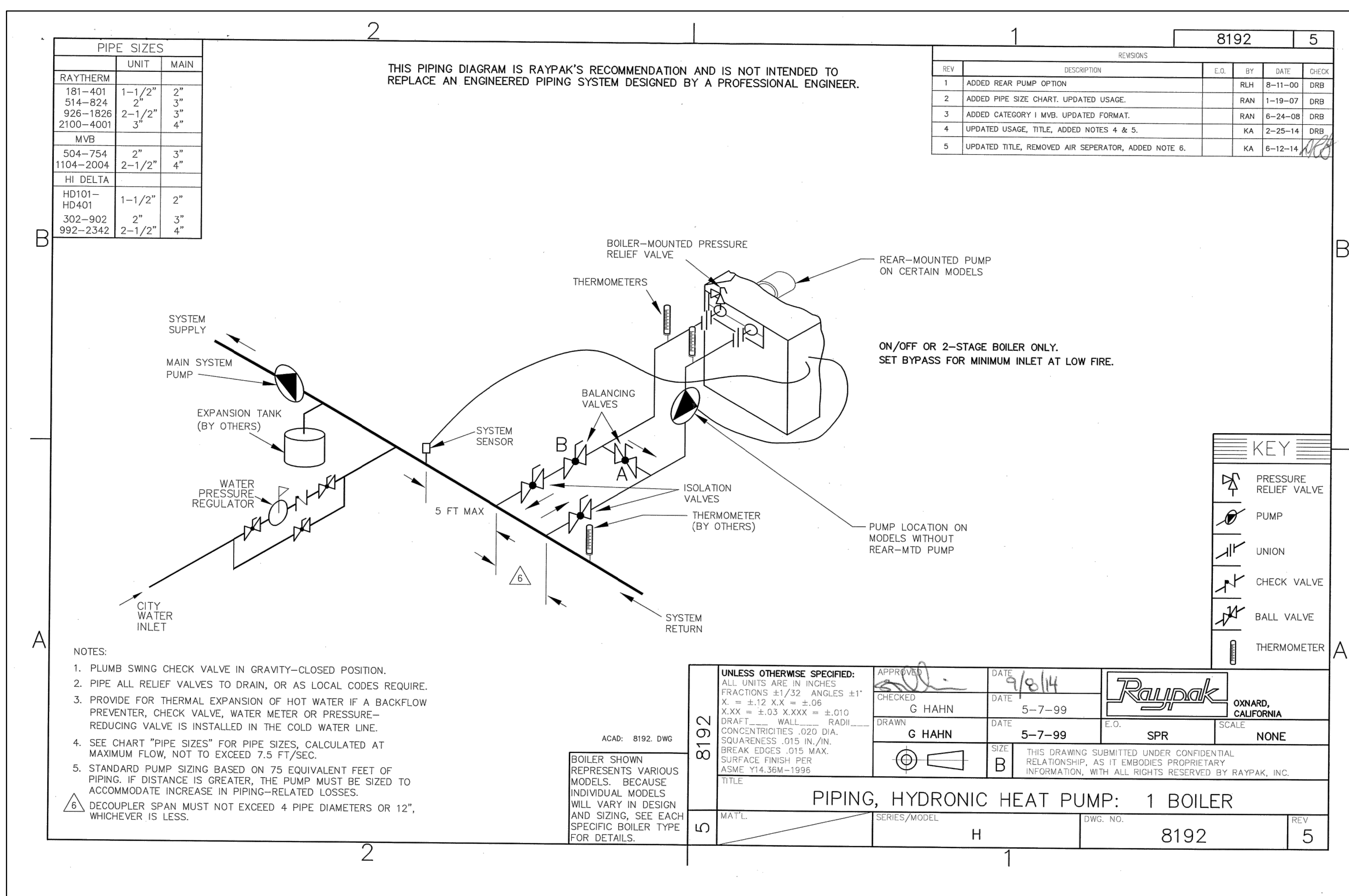
BSE Project No.: 24-0293-1049



Num	Description	Date

DETAILS

M501



1 MANUFACTURER'S IOM PIPING REQUIREMENTS
SCALE: N.T.S.

FILE NAME: K:\PROJECTS\SDCOE - 0293\24-1049 SDCOE LV BLDG 300 BOILER PROJ\DWGS\CAD V20XX\MECH\M601.DWG PLOT DATE: 6/20/2024 3:48 PM PRINT BY: JORDAN KATZ

DETAIL NOTES:

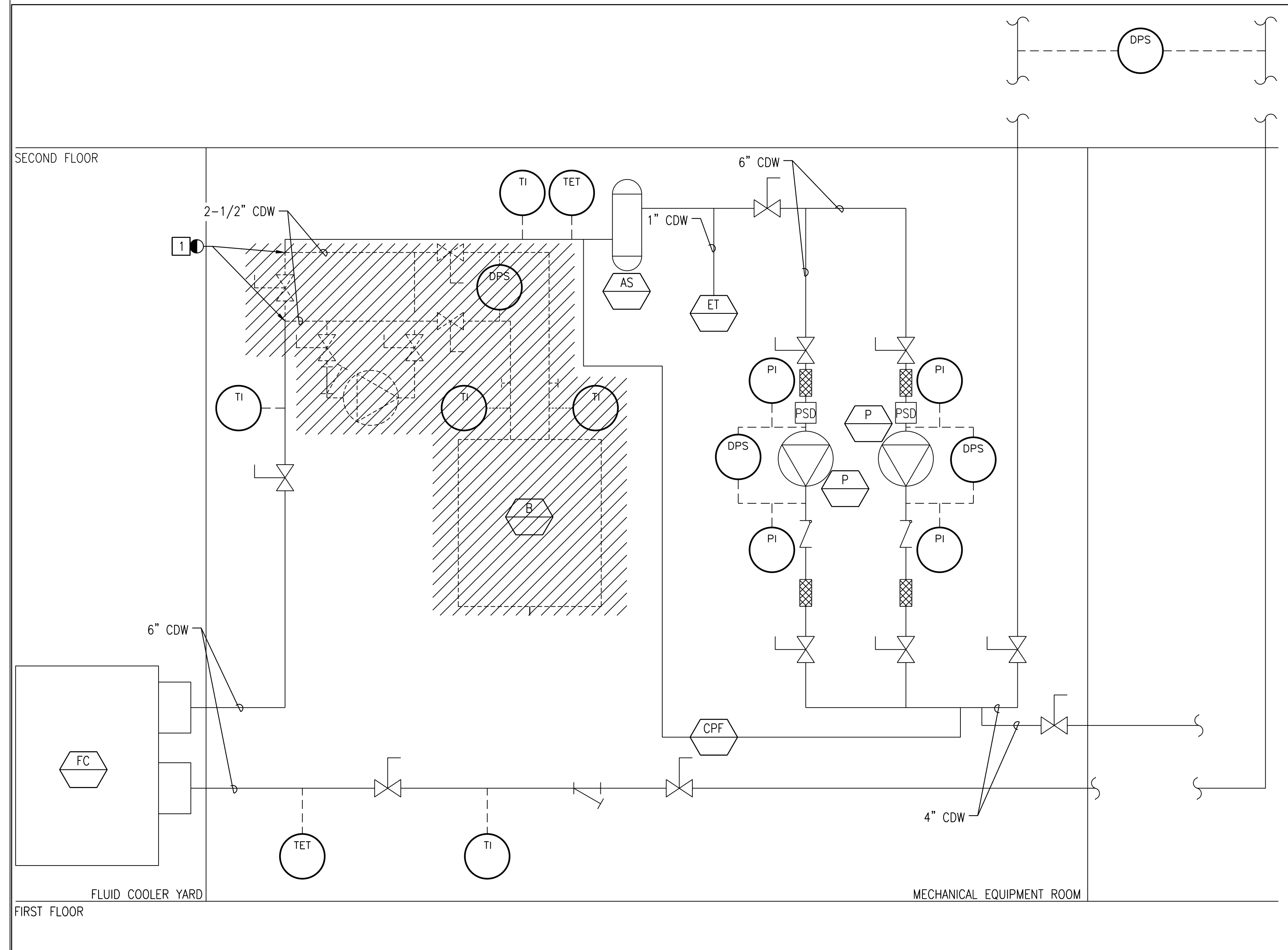
- 1. POD FOR 2-1/2" CDW PIPE TO BOILER TO BE REMOVED. REMOVE ALL PIPING, APPURTENANCES AND CONTROL DEVICES BETWEEN PODS SHOWN AND BOILER TO BE REMOVED.

GENERAL NOTES:

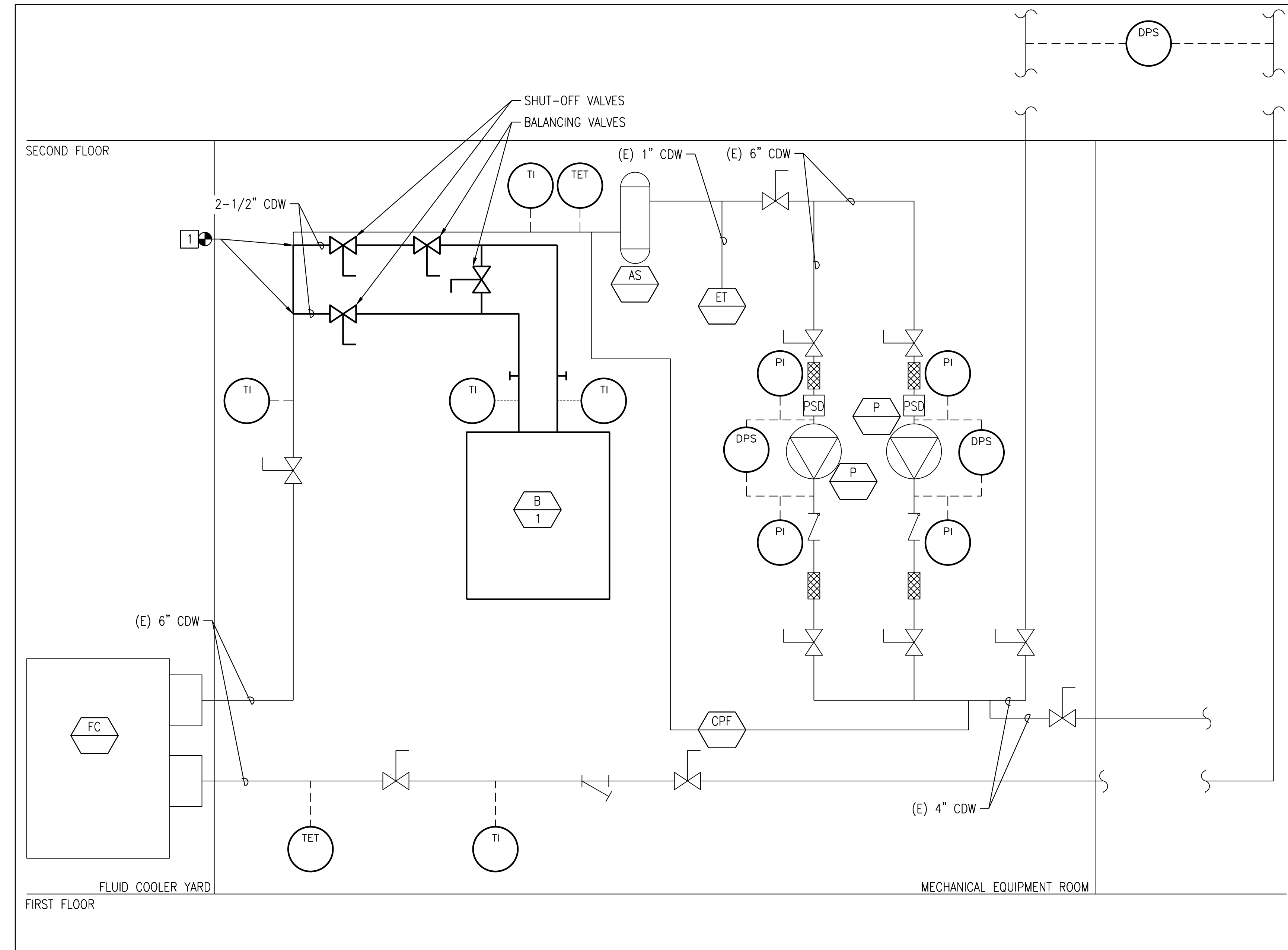
- 1. CONTROL POINTS MAPPED TO THE CAMPUS BMS AND THE BOILER SEQUENCE OF OPERATION SHALL MATCH THAT OF THE EXISTING BOILER TO BE REMOVED.

DETAIL NOTES:

- 1. POC FOR 2-1/2" CDW PIPE TO BOILER B-1. PROVIDE APPURTENANCES AND CONTROL DEVICES AS SHOWN.



1 DEMOLITION PIPING DIAGRAM
 SCALE: N.T.S.



2 RENOVATION PIPING DIAGRAM
 SCALE: N.T.S.

BSE Project No.: 24-0293-1049



Num	Description	Date

DIAGRAMS

LEGEND					
SYMBOL	DESCRIPTION	SYMBOL	DESCRIPTION	SYMBOL	DESCRIPTION
GENERAL SYMBOLS					
	DASHED SYMBOL INDICATES LUMINAIRE, DEVICE, OUTLET OR EQUIPMENT EXISTING TO REMAIN				
	SOLID SYMBOL INDICATES NEW FIXTURE, DEVICE, OUTLET				
	DASHED SYMBOL WITH HATCH INDICATES FIXTURE, DEVICE, OUTLET OR EQUIPMENT TO BE DEMOLISHED				
	CONDUIT OR WIRING EXISTING TO REMAIN		CONDUIT OR WIRING TO BE REMOVED		
	ABANDON CONDUIT IN PLACE				
	NEW WIRE INSTALLED IN EXISTING CONDUIT				
	REMOVE EXISTING WIRE EXISTING CONDUIT TO REMAIN				
	FEEDER REFERENCE, SEE FEEDER SCHEDULE				
	SHORT CIRCUIT CURRENT, AMPS				
	DETAIL NUMBER DESIGNATION SHEET DETAIL APPEARS ON				
	PHOTO NUMBER DESIGNATION SHEET PHOTO APPEARS ON				
3/E39	DETAIL OR SECTION REFERENCES IN NOTES				
+48"	INDICATES MOUNTING HEIGHT ABOVE FINISHED FLOOR				
RACEWAY & CABLE SYSTEMS					
	CONDUIT CONCEALED IN CONSTRUCTION IN FINISHED AREAS, EXPOSED IN UNFINISHED AREAS				
	CONDUIT CONCEALED IN OR UNDER FLOOR SLAB				
	FLEXIBLE CONDUIT				
	CONDUIT TURNING UP				
	CONDUIT TURNING DOWN				
	CONDUIT STUB. TERMINATE WITH BUSHING OR CAP IF UNDERGROUND				
	HOMERUN TO PANELBOARD "A" - CIRCUITS 1 & 3. CROSS MARKS, IF SHOWN, INDICATE NUMBER OF WIRES. FEEDER OR CIRCUIT NUMBERS AS NOTED. PROVIDE CONDUIT SIZES PER LIST BELOW UNLESS OTHERWISE NOTED				
	2#12, 3/4" C, GNC				
	3#12, 3/4" C, GND				
	4#12, 3/4" C, GND				
	6#12, 3/4" C, GND				
BOXES & BUSWAYS					
	JUNCTION OR OUTLET BOX, LOCATE ABOVE ACCESSIBLE CEILING UNON OR IN FLOOR		WALL WASH DOWNLIGHT FIXTURE, RECESSED IN CEILING		
	JUNCTION OR OUTLET BOX, SURFACE WALL MOUNTED.		SPOT OR FLOOD LIGHTING FIXTURE - DOUBLE OR SINGLE HEAD		
	JUNCTION OR OUTLET BOX, RECESSED WALL MOUNTED.		EMERGENCY LIGHTING UNIT		
SITE WORK					
	ELECTRICAL UNDERGROUND DUCTBANK		POLE OR POST TYPE LUMINAIRE		
	TELECOMMUNICATIONS SYSTEM UNDERGROUND DUCTBANK		SINGLE OR DUAL LUMINAIRE POLE MOUNTED SITE LIGHTING FIXTURE		
	UNDERGROUND ELECTRIC MANHOLE		LIGHTED EXIT SIGN, TOP MOUNTED ON CEILING OR STEM MOUNTED AT HEIGHT NOTED. SHADED SIDE INDICATES FACE. PROVIDE ARROWS WHERE SHOWN TO INDICATE DIRECTION OF TRAVEL		
	UNDERGROUND COMMUNICATIONS MANHOLE		DOUBLE SIDED EXIT SIGN. PROVIDE ARROWS WHERE SHOWN TO INDICATE DIRECTION OF TRAVEL		
	UNDERGROUND ELECTRICAL HANDHOLE		BACK OR END MOUNTED EXIT SIGN		
	UNDERGROUND COMMUNICATIONS HANDHOLE				
	UNDERGROUND LIGHTING HANDHOLE				
POWER DISTRIBUTION EQUIPMENT					
	PANELBOARD, RECESSED				
	PANELBOARD, SURFACE MOUNTED				
	SWITCHBOARD, FLOOR MOUNTED				
	AUTOMATIC TRANSFORMER SWITCH, WALL MOUNTED OR FLOOR MOUNTED		SURFACE WALL MOUNTED LIGHTING OCCUPANCY SENSOR WITH ON/OFF SWITCH AT +48" UON. A,B INDICATES DUAL RELAY TYPE		
	DRY TYPE TRANSFORMER, FLOOR MOUNTED UNLESS OTHERWISE INDICATED.		RECESSED WALL MOUNTED LIGHTING OCCUPANCY SENSOR WITH ON/OFF SWITCH AT +48" UON. A,B INDICATES DUAL RELAY TYPE		
	15KV LOAD BREAK SWITCH - PAD MOUNTED TYPE		LIGHTING OCCUPANCY SENSOR (360° COVERAGE), CEILING MOUNTED		
MOTOR CONTROL & PROTECTION					
	NON FUSED SAFETY DISCONNECT SWITCH		SURFACE MOUNTED TOGGLE SWITCH, SPST AT +48" UON		
	FUSED SAFETY DISCONNECT SWITCH		SURFACE MOUNTED TOGGLE SWITCH, SPST AT +48" UON		
	MOTOR, "3" INDICATES HORSEPOWER		PHOTOCCELL		

DISCONNECT AND OVERCURRENT DEVICES

CIRCUIT BREAKER	SAFETY SWITCHES
NUMBERS OF POLES 3	NUMBERS OF POLES 3
TRIP (AMPERES) *	FUSE SIZE (AMPS) *
FRAME (AMPERES) 100	RATING (AMPERES) 100
I.C. (1000 AMPS) 10	FUSE CLASS (UL) RK5
* "NA" INDICATES NON-AUTOMATIC C/B	
* "NF" INDICATES NON-FUSED SWITCH	
* "50" INDICATES TRIP OR FUSE SIZE	

VOICE/DATA/CATV SYSTEMS

2V/2D	VOICE/DATA OUTLET MOUNTED AT +16" UON WITH QUANTITY OF INSERTS AS INDICATED WIRED WITH MATCHING QUANTITY OF DROP CABLES BACK TO DATA PATCH PANEL IN RESPECTIVE IDF. PROVIDE 1 1/4" C. TERMINATED INTO ACCESSIBLE CEILING SPACE WITH INSULATED BUSHING. AREAS WITHOUT CEILING ACCESS SHALL BE PIPED BACK INTO IDF
	DUAL VOICE/DATA OUTLET FLUSH FLOOR MOUNTED WITH (2) INSERTS WIRED WITH (2) DROP CABLES BACK TO DATA PATCH PANEL IN RESPECTIVE IDF
	SINGLE DATA OUTLET MOUNTED AT 16" UON WITH (1) INSERT WIRED WITH (1) DROP CABLE TO DATA PATCH PANEL IN RESPECTIVE IDF. PROVIDE 1" C. TERMINATED INTO ACCESSIBLE CEILING SPACE WITH INSULATED BUSHING. AREAS WITHOUT CEILING ACCESS SHALL BE PIPED BACK INTO IDF
	CCTV CAMERA, WALL MOUNTED AT + X" UON

ABBREVIATIONS			
ABBREV	DESCRIPTION	ABBREV	DESCRIPTION
A	AMPERE	LV	LOW VOLTAGE
AC	ALTERNATING CURRENT	MAX	MAXIMUM
AF	AMP FRAME	MC	METAL-CLAD CABLE
AFF	ABOVE FINISHED FLOOR	MCC	MOTOR CONTROL CENTER
AFCI	ARC-FAULT CIRCUIT INTERRUPTER	MCB	MAIN CIRCUIT BREAKER
AFG	ABOVE FINISHED GRADE	MCP	MAIN DISTRIBUTION PANEL
AH	AMP HOUR	MH	MANHOLE
AHJ	AUTHORITY HAVING JURISDICTION	MIN	MINIMUM
AIC	AMPERE INTERRUPTING CAPACITY	MISC	MISCELLANEOUS
AL	ALUMINUM	MJB	MAIN BONDING JUMPER
AS	AMP SWITCH	MLO	MAIN LUGS ONLY
AT	AMP TRIP	MOCP	MAXIMUM OVERCURRENT PROTECTION
ATS	AUTOMATIC TRANSFER SWITCH	MT	MOUNT
AWG	AMERICAN WIRE GAUGE	MTD	MOUNTED
BAS	BUILDING AUTOMATION SYSTEM	MTG	MOUNTING
BCC	BARE COPPER GROUND	MTS	MANUAL TRANSFER SWITCH
BLDG	BUILDING	(NR)	NEW LOCATION FOR RELOCATED FIXTURE
BJ	BONDING JUMPER	N	NEUTRAL
C	CONDUIT	N/A	NOT APPLICABLE
CATV	CABLE TELEVISION	NACP	NOTIFICATION APPLIANCE CONTROL PANEL
CB	CIRCUIT BREAKER	NC	NORMALLY CLOSED
CD	CANDELA	NEC	NATIONAL ELECTRICAL CODE
CKT	CIRCUIT	NECA	NATIONAL ELECTRICAL CONTRACTURE ASSOCIATION
CMU	CONCRETE MASONRY UNIT	NEMA	NATIONAL ELECTRICAL MANUFACTURER ASSOCIATION
C.O.	CONDUIT ONLY	NFPA	NATIONAL FIRE PROTECTION AGENCY
COL	COLUMN	NF	NON-FUSED, NON-FUSIBLE
COMM	COMMUNICATIONS	NIC	NOT IN CONTRACT
CU	COPPER	NLTFMC	NONMETALLIC LIQUIDTIGHT FLEXIBLE METAL CONDUIT
CWP	COLD WATER PIPE	NM	NONMETALLIC SHEATHED CABLE
(D)	DEMO	NO	NORMALLY OPEN
D	DEEP, DEPTH	NRTL	NATIONALLY RECOGNIZED TESTING LABORATORY
DB	DIRECT BURIED	NTS	NOT TO SCALE
DC	DIRECT CURRENT	OCPD	OVERCURRENT PROTECTIVE DEVICE
DIA	DIAMETER	POLE	POLE
DISC	DISCONNECT	PB	PULL BOX
DIST	DISTRIBUTION	PBB	PRIMARY BONDING BUS BAR
DN	DOWN	PF	POWER FACTOR
DWG	DRAWING	PH, Ø	PHASE
DR	DEMAND RESPONSE	PNL	PANEL(BOARD)
(E)	EXISTING TO REMAIN	PRI	PRIMARY
EA	EACH	PT	POTENTIAL TRANSFORMER
EBJ	EQUIPMENT BONDING JUMPER	PV	PHOTOVOLTAIC
EG	EQUIPMENT GROUND	PVC	POLYVINYL CHLORIDE
EGC	EQUIPMENT GROUNDING CONDUCTOR	PWR	POWER
EHH	ELECTRICAL HANDHOLE	QTY	QUANTITY
ELEC	ELECTRIC, ELECTRICAL	(R)	RELOCATE
EMCS	ENERGY MANAGEMENT & CONTROL SYSTEM	REC	RECEPTACLE
EMT	ELECTRIC METALLIC TUBING	RM	ROOM
EQUIP	EQUIPMENT	RMC	RIGID METALLIC CONDUIT
EPO	EMERGENCY POWER OFF	RT	RAINTIGHT
EWC	ELECTRIC WATER COOLER	SEC	SECONDARY
EW	ELECTRICAL WATER HEATER	SECT	SECTION
EXIST,(E)	EXISTING	SCCR	SHORT-CIRCUIT CURRENT RATING
FA	FIRE ALARM	SPD	SURGE PROTECTIVE DEVICE
FACP	FIRE ALARM CONTROL PANEL	SS	STAINLESS STEEL
FLA	FULL LOAD AMPS	ST	SHUNT TRIP
FLR	FLOOR	SWBD	SWITCHBOARD
FMC	FLEXIBLE METALLIC CONDUIT	TEL	TELEPHONE
FT	FOOT, FEET	TEL/DATA	TELEPHONE/DATA
G, GND	GROUND	TELCO	TELEPHONE COMPANY
GEC	GROUNDING ELECTRODE CONDUCTOR	TERM	TERMINAL(S)
GFCI	GROUND-FAULT CIRCUIT INTERRUPTER	TD	TIME DELAY FUSE
GFPE	GROUND-FAULT PROTECTION EQUIPMENT	TMPR	TAMPER
GND	GROUND	TTB	TELEPHONE TERMINAL BOARD
GR	GROUND ROD	TR	TELECOMMUNICATIONS ROOM
HP	HANDHOLE	TYP	TYPICAL
HPH	HORSEPOWER	UBC	UNIFORM BUILDING CODE
HT	HEIGHT	UG	UNDERGROUND
HVAC	HEATING, VENTILATING AND AIR CONDITING	UF	UNDERGROUND FEEDER
IC	ISOLATED GROUND	UL	UNDERWRITERS LABORATORIES
IMC	INTERMEDIATE METAL CONDUIT	UOI	UNLESS OTHERWISE INDICATED
JB	JUNCTION BOX	V	VOLT
K	KELVIN	VA	VOLTAMPERE
KAIC	THOUSAND AMPS INTERRUPTING CAPACITY	VD	VOLTAGE DROP
KCMIL	KILOVOLT	VFD	VARIABLE SPEED DRIVE
K/O	KNOCK-OUT	VT	VAPORTIGHT
KCMIL	KILOVOLT AMPERES	W	WATT OR WIRE
KV	KILOVOLT	WH	WATTHOUR OR WATER HEATER
KVA	KILOVOLT AMPERES	WP	WEATHERPROOF
KW	KILOWATT	XFMR	TRANSFORMER
LCP	LIGHTING CONTROL PANEL	XP	EXPLOSION PRROF
LFMC	LIQUIDTIGHT FLEXIBLE METAL CONDUIT	Y	WYE
LFNC	LIQUIDTIGHT FLEXIBLE NONMETALLIC CONDUIT	3W	THREE WIRE
LHH	LIGHTING HANDHOLE	3PH	THREE PHASE
LT	LIGHT	#	NUMBER
LTG	LIGHTING		

APPLICABLE CODES

APPLICABLE CODES: DIVISION OF THE STATE ARCHITECT AS OF JANUARY 1, 2023*

2022 CALIFORNIA BUILDING STANDARDS ADMINISTRATIVE CODE, PART 1, TITLE 24 C.C.R.*

2022 CALIFORNIA ADMINISTRATIVE CODE (CAC), PART 1, TITLE 24 CCR

2022 CALIFORNIA BUILDING CODE (CBC), PART 2, TITLE 24 C.C.R.
(2021 INTERNATIONAL BUILDING CODE OF THE INTERNATIONAL CODE COUNCIL, VOLUMES 1-2 WITH CALIFORNIA AMENDMENTS)

2022 CALIFORNIA ELECTRICAL CODE (CEC), PART 3, TITLE 24 C.C.R. (W/ CA AMENDMENTS)
(2020 NATIONAL ELECTRICAL CODE OF THE NATIONAL FIRE PROTECTION ASSOCIATION, NFPA)

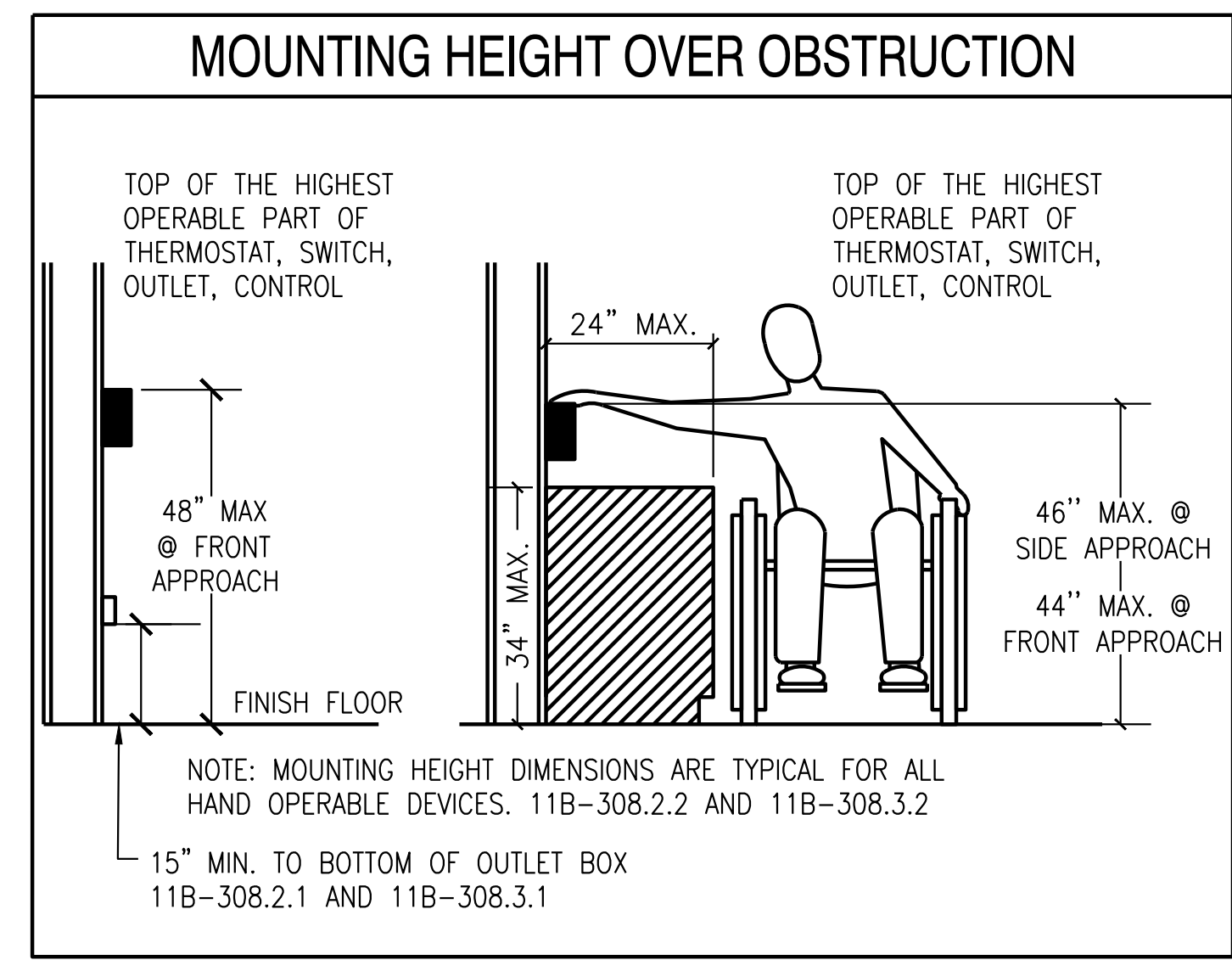
2022 CALIFORNIA ENERGY CODE PART 6, TITLE 24, C.C.R. FOR ENERGY COMPLIANCE.*

2022 CALIFORNIA FIRE CODE (CFC) PART 9, TITLE 24 C.C.R. (W/ CA AMENDMENTS)
(2021 INTERNATIONAL FIRE CODE OF THE INTERNATIONAL CODE COUNCIL)

2022 CALIFORNIA EXISTING BUILDING CODE (CEBC), PART 10, TITLE 24 CCR

2022 CALIFORNIA GREEN BUILDING STANDARDS CODE (CALGREEN), PART 11, TITLE 24 CCR

2022 CALIFORNIA REFERENCED STANDARDS, PART 12, TITLE 24 C.C.R. TITLE 19 C.C.R., PUBLIC SAFETY, STATE FIRE MARSHALL REGULATIONS.



BSE ENGINEERING, INC.
9903 BUENAVISTA AVE. SUITE
104, SAN DIEGO, CA 92111
TEL: 958.279.2000
FAX: 958.279.2626

SAN DIEGO COUNTY OFFICE OF EDUCATION BLDG #3

6401 LINDA VISTA RD, SAN DIEGO, CA 92111

1ST FLOOR HEAT PUMP REPLACEMENT

BSE Project No.: 24-0293-1049

Num	Description	Date

ABBREVIATION, LEGEND

E001

© BSE ENGINEERING, INC.

FILE NAME: K:\PROJECTS\SDCOE - 0293\24-1049 SDCOE LV BLDG 300 BOILER PROJ.DWG\SDCOE\E002.DWG PLOT DATE: 5/22/2024 4:16 PM PRINT BY: ELIZABETH POITS

ELECTRICAL GENERAL NOTES

Table with 3 columns and 22 rows of electrical general notes. Notes cover topics such as material standards (ASTM, NEMA, etc.), conduit installation, raceway requirements, and equipment specifications.



BSE ENGINEERING, INC. 9903 BUSINESSPARK AVE. SUITE 104 SAN DIEGO, CA 92131 TEL: 858.279.2000 FAX: 858.279.2626

SAN DIEGO COUNTY OFFICE OF EDUCATION BLDG #3

1ST FLOOR HEAT PUMP REPLACEMENT

6401 LINDA VISTA RD, SAN DIEGO, CA 92111

BSE Project No.: 24-0293-1049

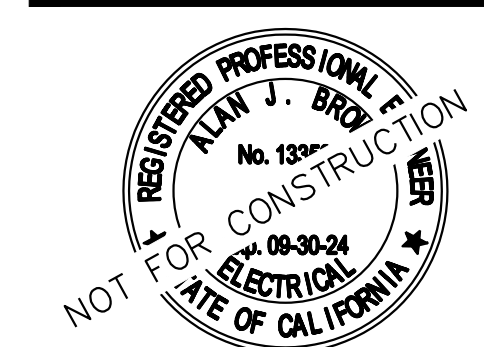
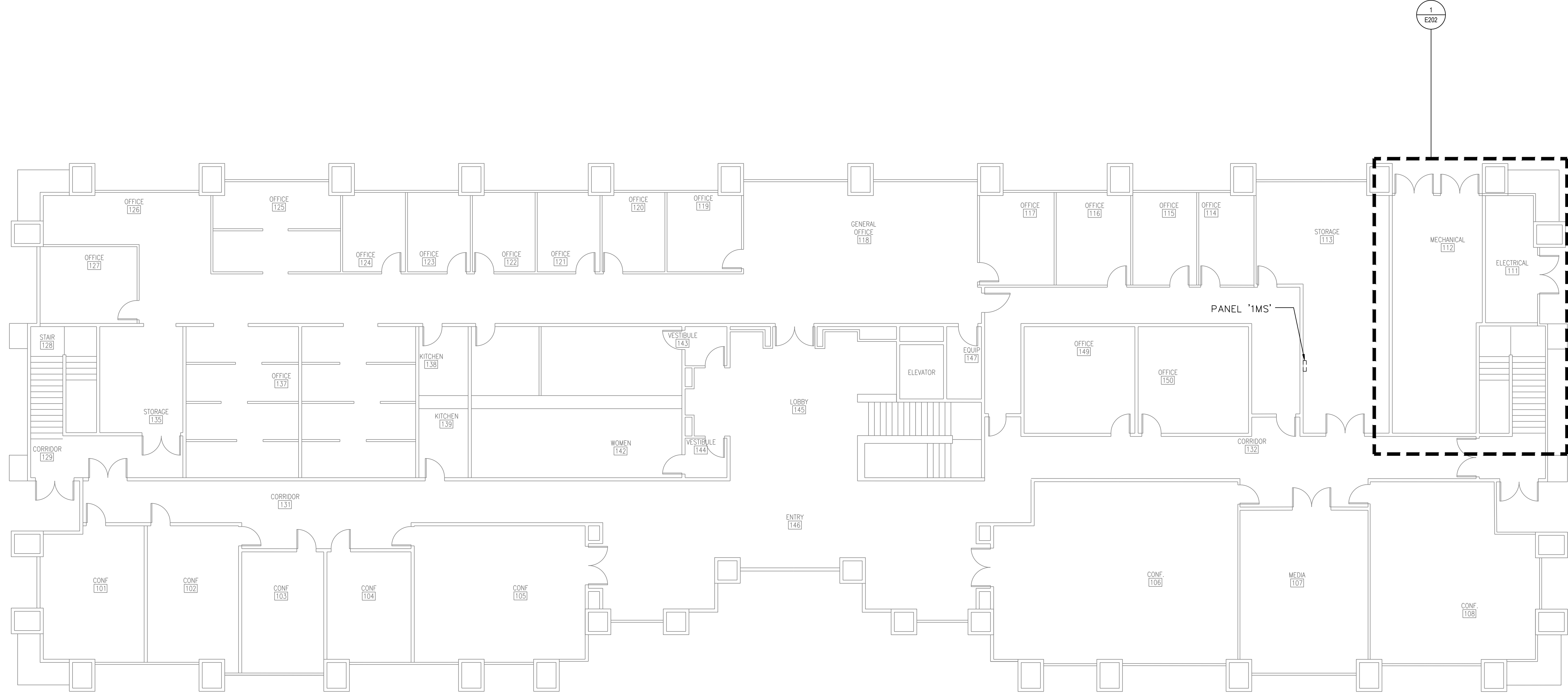


Table with 3 columns: Num, Description, Date. Contains a series of empty rows for project tracking.

GENERAL NOTES

E002

FILE NAME: K:\PROJECTS\SDCOE - 0293\24-1049 SDCOE IV BLDG 300 BOILER PROJ\DWGS\CAD V20XX\ELEC\E201.DWG PLOT DATE: 5/22/2024 4:17 PM PRINT BY: ELIZABETH POITS



1 BUILDING 300 OVERALL PLAN
SCALE: 1/8"=1'

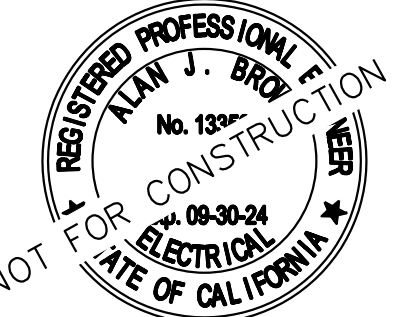


**SAN DIEGO COUNTY OFFICE OF
EDUCATION BLDG #3**

1ST FLOOR HEAT PUMP REPLACEMENT

6401 LINDA VISTA RD, SAN DIEGO, CA 92111

BSE Project No.: 24-0293-1049

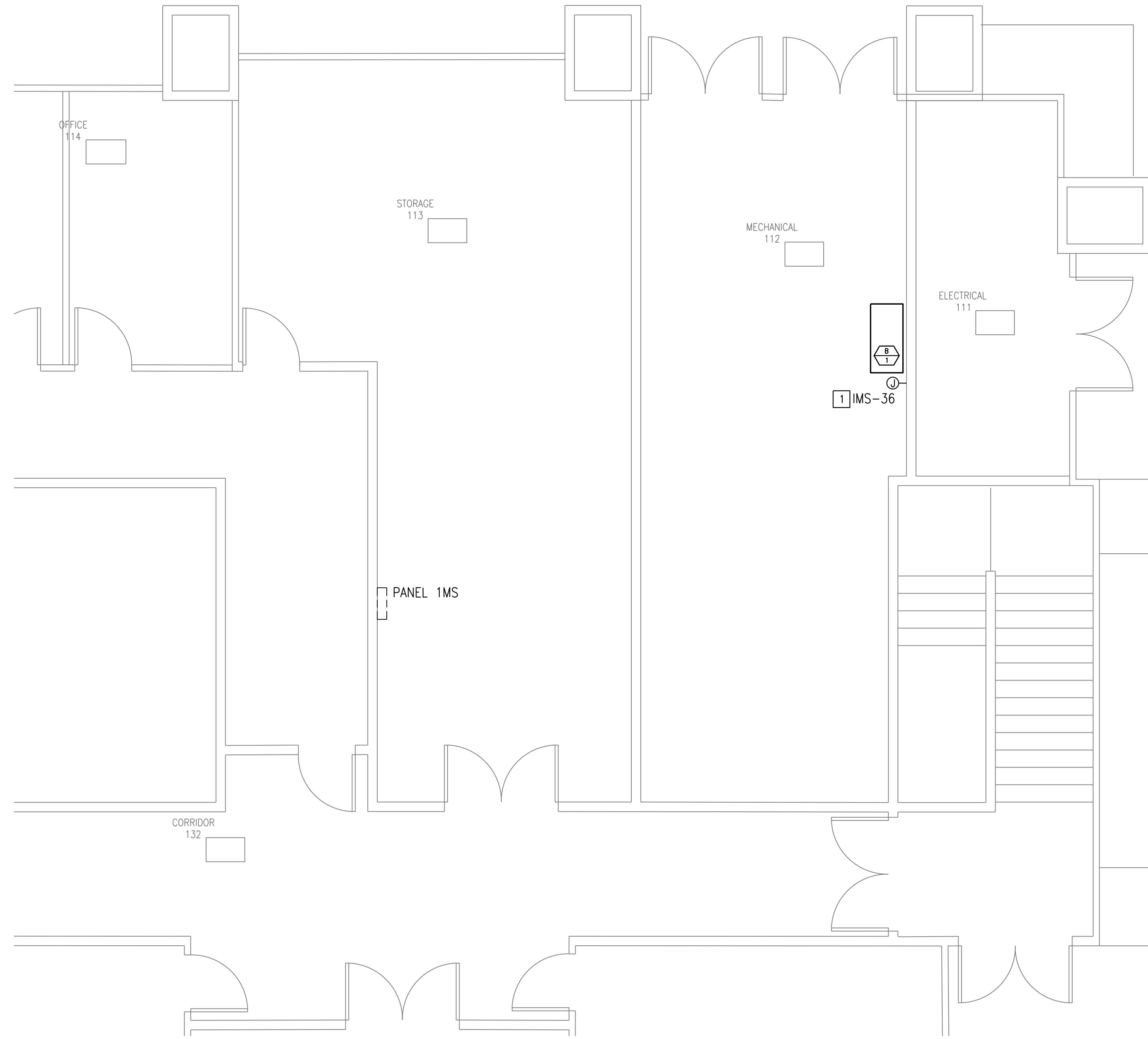


Num	Description	Date

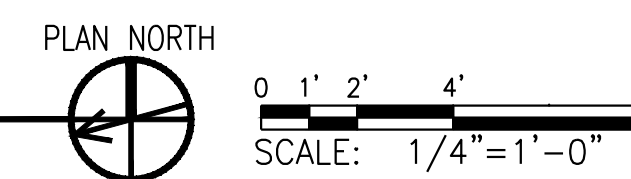
**BUILDING 300 OVERALL
PLAN**

KEYNOTES

- 1 REMOVE EXISTING ELECTRICAL CONNECTION TO OLD BOILER BEING DEMOLISHED, SAFE OFF. REINSTALL ELECTRICAL CONNECTION ONCE NEW BOILER IS INSTALLED.



1 ENLARGED RENOVATION PLAN
 SCALE: 1/4"=1'

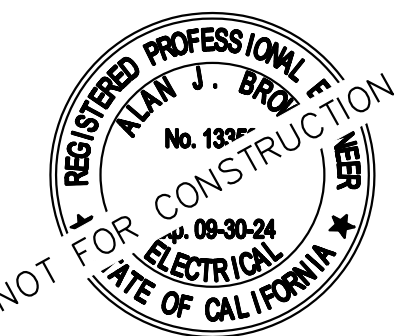


**SAN DIEGO COUNTY OFFICE OF
 EDUCATION BLDG #3**

1ST FLOOR HEAT PUMP REPLACEMENT

6401 LINDA VISTA RD, SAN DIEGO, CA 92111

BSE Project No.: 24-0293-1049



Num	Description	Date

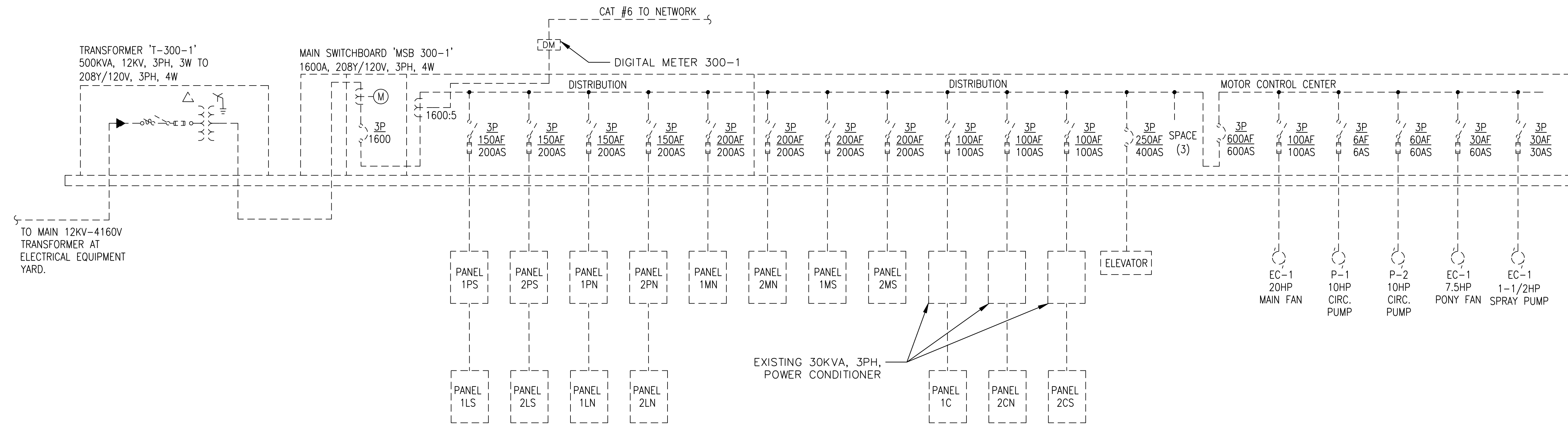
BLDG 300 MECHANICAL ROOM ENLARGED RENOVATION

GENERAL NOTES

1. ALL EQUIPMENT SHOWN IS EXISTING U.O.N.

KEYNOTES

- 1 NO INCREASE IN LOAD ON PANEL.
- 2 EXISTING BREAKER TO BE REUSED.



1 SINGLE LINE DIAGRAM
NTS

1MS 1											
ROOM STORAGE 113		VOLTS 208Y/120V 3P 4W		AIC							
MOUNTING SURFACE		BUS AMPS 200		MAIN BKR MLO							
FED FROM SWBD MSB 300-1		NEUTRAL 100%		LUGS STANDARD							
NOTE											
CKT #	CKT BKR	CIRCUIT DESCRIPTION	LOAD VA			CKT #	CKT BKR	CIRCUIT DESCRIPTION	LOAD VA		
			A	B	C				A	B	C
1	30/3	HEAT PUMP #79	0	0	0	2	30/3	HEAT PUMP #78	0	0	0
3						4					
5						6					
7	30/3	HEAT PUMP #80	0	0	0	8	30/2	HEAT PUMP #73	0	0	0
9						10					
11						12	20/3	HEAT PUMP #75	0	0	0
13	30/2	HEAT PUMP #81	0	0	0	14					
15						16					
17	30/3	HEAT PUMP #82	0	0	0	18	30/3	HEAT PUMP #76	0	0	0
19						20					
21						22					
23	30/3	HEAT PUMP #83	0	0	0	24	20/3	HEAT PUMP #77	0	0	0
25						26					
27						28					
29	20/1	CONTROLS	0	0	0	30	20/1	DAMPERS	0	0	0
31	50/2	ATM ROOM PANEL	0	0	0	32	20/1	EXHAUST FAN - 7	0	0	0
33						34	20/1	QUAD OUTLET	0	0	0
35	30/2	SPARE	0	0	0	36	20/1	BOILER	0	0	0
37						38	20/1	QUAD OUTLET	0	0	0
39	-/1	SPACE	0	0	0	40	-/1	SPACE	0	0	0
41	-/1	SPACE	0	0	0	42	-/1	SPACE	0	0	0
TOTAL CONNECTED VA BY PHASE									0	0	0
CONN VA			CALC VA			CALC VA					
TOTAL LOAD									0		
BALANCED 3-PHASE LOAD									0 A		

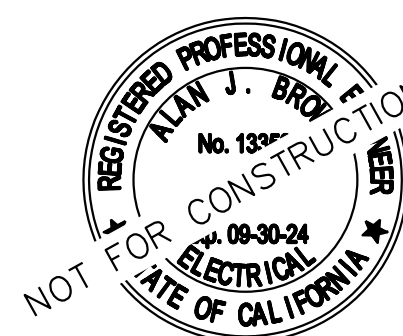
2 PANEL SCHEDULE
NTS

**SAN DIEGO COUNTY OFFICE OF
EDUCATION BLDG #3**

1ST FLOOR HEAT PUMP REPLACEMENT

6401 LINDA VISTA RD, SAN DIEGO, CA 92111

BSE Project No.: 24-0293-1049



Num	Description	Date

SINGLE LINE DIAGRAMS