

# Los Lunas Public Schools

OVERVIEW INDICATORS ACCOUNTABLE SCHOOLS

SCHOOL YEAR **2023-2024** TOTAL ENROLLMENT **8,167** ACCOUNTABLE SCHOOLS **16**

## ABOUT NM Vistas

NM Vistas, developed by the New Mexico Public Education Department (PED) in 2019, serves as a public reporting data website that showcases school performance aligned to the 2015 Every Student Succeeds Act (ESSA)— U.S. Department of Education mandate. (ESSA) require state education agencies to implement a system of annual school identification and to disseminate report cards that provide information on State, LEA, and school performance and progress.

The PED's beliefs that all students are capable of growth and that all schools are capable of improving are the driving force behind NM Vistas. Just as a single test score does not represent everything about a child, NM Vistas does not tell a complete picture about a single school, district, or state charter school. The realities, challenges, and successes that local students, educators and parents face could never be reflected on a single website. NM Vistas serves as only part of the story about a school. PED endeavors to tell part of each school's story through high-quality data, as published on NM Vistas.

The designation metrics provided on this website for each school is produced by PED's [Assessment, Research, Evaluation and Accountability Division](#) and vetted by districts and charters before going public. The quality of this data is dependent on district and charter school data submissions to the PED and the quality of the data validation conducted by both PED and its schools.

### How are schools rated?

Schools are rated on a [point system](#) based on the following indicators:

- Math, Reading, and Science Achievement / Assessment Results
- Growth in Math and Reading across time
- Student attendance
- Progress towards English language proficiency for students that are English learners
- Post-secondary readiness\*
- Graduation rates\*
- Graduation rate growth\*

*\*applies to high school ratings only*

### What are the school designation categories?

<b>Spotlight:</b> Highest recognition; schools among the top 25% of schools
<b>Traditional:</b> Good standing; not in designation
<b>Targeted Support and Improvement School (TSI):</b> Schools with consistently underperforming student groups
<b>Additional Targeted Support and Improvement School (ATSI):</b> Schools in need of support with one or more of the lowest performing groups of students
<b>Comprehensive Support and Improvement School (CSI):</b> Schools scoring in the bottom 5% of Title I schools overall or that have a graduation rate below 67%
<b>More Rigorous Interventions (MRI):</b> Schools not exiting CSI Status after 3 years receiving support

## LOS LUNAS SCHOOL DESIGNATIONS

School ↓	City	Type	Designation
Ann Parish Elementary	Los Lunas	Public School	Traditional
Bosque Farms Elementary	Los Lunas	Public School	Spotlight
Century Alt High	Los Lunas	Public School	MRI.Grad
Desert View Elementary	Los Lunas	Public School	Traditional
Katherine Gallegos Elementary	Los Lunas	Public School	Spotlight
Los Lunas Elementary	Los Lunas	Public School	Traditional
Los Lunas Family School	Los Lunas	Public School	Traditional
Los Lunas High	Los Lunas	Public School	Traditional
Los Lunas Middle	Los Lunas	Public School	Traditional
Peralta Elementary	Los Lunas	Public School	Traditional
Raymond Gabaldon Elementary	Los Lunas	Public School	Traditional
Sundance Elementary	Los Lunas	Public School	Traditional
Tome Elementary	Los Lunas	Public School	Traditional
Valencia Elementary	Los Lunas	Public School	Traditional
Valencia High	Los Lunas	Public School	Traditional
Valencia Middle School	Los Lunas	Public School	Traditional

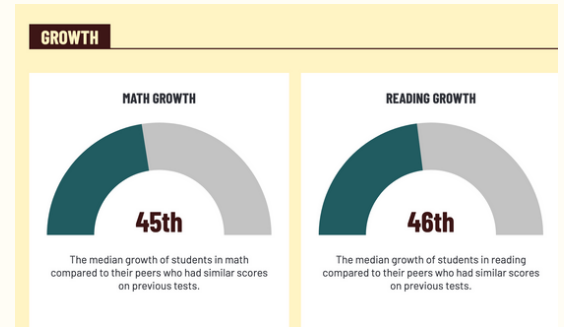
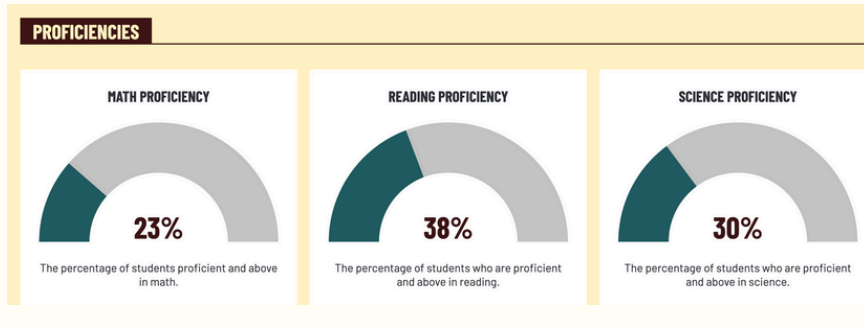
# LOS LUNAS SCHOOLS STUDENT DEMOGRAPHICS

Student Demographics		
	Number	%
All Students	8210	
Female	3971	48.4%
Male	4239	51.6%
Caucasian	6098	74.3%
African American	192	2.3%
Asian	73	0.9%
American Indian	673	8.2%
Hispanic	1134	13.8%
Unclassified	40	0.5%

Enrollment by School	
Ann Parish Elementary	405
Bosque Farms Elementary	460
Desert View Elementary	398
Katherine Gallegos Elementary	608
Los Lunas Elementary	456
Los Lunas Family School	40
Peralta Elementary	232
Raymond Gabaldon Elementary	375
Sundance Elementary	616
Tomé Elementary	344
Valencia Elementary	372
Los Lunas Middle School	713
Valencia Middle School	441
Century High School	356
Los Lunas High School	1440
Valencia High School	954

Enrollment by Grade	
PreK	272
Kinder	527
1st Grade	558
2nd Grade	587
3rd Grade	625
4th Grade	551
5th Grade	591
6th Grade	560
7th Grade	570
8th Grade	619
9th Grade	918
10th Grade	680
11th Grade	629
12th Grade	523

# LOS LUNAS SCHOOLS STUDENT ACCOUNTABILITY DATA



Reading Proficiency 2023-2024		
School	% Proficient	% Not-Proficient
Ann Parish	31%	69%
Bosque Farms Elementary	52%	48%
Desert View Elementary	20%	80%
Katherine Gallegos Elementary	52%	48%
Los Lunas Elementary	28%	72%
Los Lunas Family School	24%	76%
Peralta Elementary	35%	65%
Raymond Gabaldon Elementary	30%	70%
Sundance Elementary	38%	62%
Tomé Elementary	21%	79%
Valencia Elementary	25%	75%
LLFS	42%	58%
LLMS	45%	55%
VMS	35%	65%

Math Proficiency 2023-2024		
School	% Proficient	% Not-Proficient
Ann Parish	22%	78%
Bosque Farms Elementary	47%	53%
Desert View Elementary	15%	85%
Katherine Gallegos Elementary	49%	51%
Los Lunas Elementary	21%	79%
Los Lunas Family School	9%	91%
Peralta Elementary	22%	78%
Raymond Gabaldon Elementary	19%	81%
Sundance Elementary	37%	63%
Tomé Elementary	12%	88%
Valencia Elementary	18%	82%
LLFS	21%	79%
LLMS	18%	82%
VMS	17%	83%

Science Proficiency 2023-2024		
School	% Proficient	% Not-Proficient
Ann Parish	18%	82%
Bosque Farms Elementary	42%	58%
Desert View Elementary	15%	85%
Katherine Gallegos Elementary	35%	65%
Los Lunas Elementary	13%	87%
Los Lunas Family School	20%	80%
Peralta Elementary	55%	45%
Raymond Gabaldon Elementary	21%	79%
Sundance Elementary	36%	64%
Tomé Elementary	13%	87%
Valencia Elementary	37%	63%
LLFS	32%	68%
LLMS	18%	82%
VMS	27%	73%
CHS	24%	76%
LLHS	47%	53%
VHS	30%	70%

Math Achievement by Grade		
	Los Lunas	State NM
3rd	22%	25%
4th	27%	26%
5th	29%	31%
6th	36%	30%
7th	21%	20%
8th	14%	19%

Reading Achievement by Grade		
	Los Lunas	State NM
3rd	30%	33%
4th	39%	43%
5th	37%	41%
6th	45%	40%
7th	43%	40%
8th	38%	41%

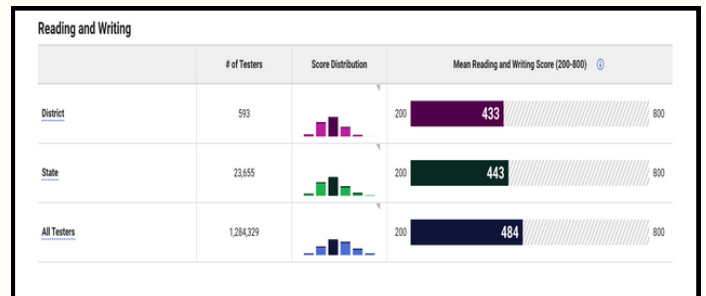
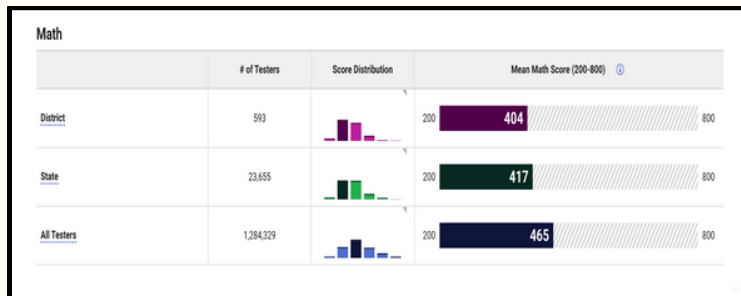
Reading Achievement - Students w/Disabilities		
	2022-23	2023-24
3RD	16%	11%
4TH	10%	17%
5TH	6%	5%
6TH	7%	11%
7TH	7%	13%
8TH	1%	8%

Math Achievement - Students w/Disabilities		
	2022-23	2023-24
3RD	12%	9%
4TH	10%	9%
5TH	12%	7%
6TH	6%	6%
7TH	0%	3%
8TH	1%	0%

Reading Achievement - English Language Learners		
	2022-23	2023-24
3RD	19%	15%
4TH	18%	27%
5TH	26%	16%
6TH	14%	34%
7TH	20%	14%
8TH	9%	14%

Maath Achievement - English Language Learners		
	2022-23	2023-24
3RD	11%	8%
4TH	8%	14%
5TH	30%	9%
6TH	16%	21%
7TH	9%	10%
8TH	1%	4%

## LOS LUNAS SCHOOLS COLLEGE BOARD SAT DATA



## LOS LUNAS SCHOOLS EDUCATOR LICENSURE LEVEL

	Number	Percent
Educators at Level I	121	22%
Educators at Level II	186	34%
Educators at Level III	234	42%
National Board Certified Educators	10	2%