

Santee Elementary School



Student/Family Handbook 2024 - 2025

Mrs. Maria Reyes, Principal

1313 Audubon Drive • San Jose, California 95122 • (408) 283 - 6450 • santee.fmsd.org



Santee Elementary

Table of Contents

Welcome Letter from the Principal	2
Santee's Mission, Vision, and Core Values	3
Certificated Staff Contact Information	4
Administration, Support, and Community Contact	5
Instructional Bell Schedule	6
School Calendar	7
Family Communication	8
Instruction and Learning	9
Family Guidelines	10
Attendance	11
School Dress Code Policy	12
Student Behavior Expectations	13-14
Bullying and All Forms of Harassment	13
Guidelines for Violation of School Rules	14
Disclaimer	14
No Place for Hate Pledge	15
School Policies	16-17



Santee Elementary



Dear Santee Students and Families,

We hope everyone had an opportunity to relax and enjoy time with family and friends this past summer! We, as a Santee team, could not be more excited to welcome all of our students back for another year of learning! We pride ourselves on creating an environment where students' differences are celebrated and supported academically, socially, and emotionally to achieve success inside and outside the classroom.

To our new families, we are so excited you have decided to share your educational journey with us! Please remember that we are here to serve and support you in any way we can. Welcome to the Santee Family! I encourage you to partner with us in your child's educational experience through various opportunities

such as School Site Council meetings, English Language Advisory Committee meetings, Los Dichos, parent workshops, and community events, such as our monthly "Cafecitos" / Coffee with the Principal. Various community partners attend these meetings to hear from you and share resources.

We look forward to another amazing year with our wonderful Santee community and are eager to continue showing everyone why we are so proud to be Santee BEARS.

Lastly, this handbook will provide information about Santee School. Please use it as a reference. If there is anything that is not answered in this handbook, please do not hesitate to contact the front office.

The Santee Team looks forward to another great year as Proud Santee Bears!

Sincerely,

Maria Reyes

Principal, Santee School

maria.reyes@fmsd.org



Santee Elementary

Santee's Mission

To develop the **resourcefulness**, **resilience**, and **creativity** necessary to be successful in today's and tomorrow's world, each child will engage in relevant project-based learning that incorporates science, technology, engineering, arts, and mathematics. Students will see themselves as community advocates and change agents who can positively impact their community.

Santee's Vision

To unlock the potential of the world's future innovators, inventors, dreamers, and leaders.

Santee PRIDE Values

Our values define us – how we work, learn, interact, and fulfill our mission.

Santee PRIDE Values are the cornerstone for everything we do and unite our staff, students, parents, and caregivers in building a culture of collaboration that inspires us to be our best today and in the future.

Santee PRIDE Values are and how they can be enacted through our daily lives:

P—Professionalism: To be competent, accountable, reliable, and responsible, interacting positively and collaboratively with all colleagues, students, parents, visitors, and community partners.

R - Respect: Treat all others as you wish to be treated, be courteous and kind, and act with the utmost consideration of others.

I - Integrity: To be honest, trustworthy, and ethical, always doing the right thing without compromising the truth, and being fair and sincere.

D - Diversity: To appreciate and celebrate differences in others, creating an environment of equity and inclusion with opportunities for everyone to reach their potential.

E—Excellence: To be dedicated, motivated, innovative, and confident, to give your best every day, and to encourage and support others to excel in everything they do.



Santee Elementary

24 - 25 Certificated Teaching Staff

Name	Email	Grade	Room	Extension
Lily Medina	lily.medina@fmsd.org	PK Inclusion	EDU	4812
Jacqueline Gulan	Jacqueline.gulan@fmsd.org	PK SDC	EDU	4828
Tina Aberg	tina.aberg@fmsd.org	TK	EDU	4827
Ana Hernandez	ana.hernandez@fmsd.org	K-1 SDC	A-1	1601
Kimberly Leonhardt	kimberly.leonhardt@fmsd.org	Kinder	A-2	1602
Julie Muonio	julie.muonio@fmsd.org	Kinder	B-6	1606
Mayra Dominguez	mayra.dominguez@fmsd.org	1st Grade	B-4	1604
Adrian Sarellano	adrian.sarellano@fmsd.org	2nd Grade	D-14	1614
Aman Khosa	amandeep.khosa@fmsd.org	2nd Grade	D-15	1615
Kelly Maeda	kelly.maeda@fmsd.org	3rd Grade	C-10	1610
Vivian Pham	vivian.pham@fmsd.org	3rd Grade	C-11	1611
Julia Hong	julia.hong@fmsd.org	2-3 SDC	B-5	1605
Donna Yazdani	donna.yazdani@fmsd.org	4th Grade	P-20	1620
Robert Flores	robert.flores@fmsd.org	4-5 Grade	D-17	1617
Imelda Murillo	imelda.murillo@fmsd.org	5th Grade	D-16	1616
Kristin Kittl	kristin.kittl@fmsd.org	6th Grade	D-18	1618
Joycelyn Martinez	joycelyn.martinez@fmsd.org	6th Grade	P-19	1619
Karen Orozco	karen.orozco@fmsd.org	SSS	C-12	1612
Rodger Mao	rodger.mao@fmsd.org	SEAL Coach	C-9	1609
Gomathi Muniappan	gomathi.muniappan@fmsd.org	RSP	B-3	1603
Gulshan Dayal	gulshan.dayal@fmsd.org	RSP	P-21	1621
Shaila Shenoy	shaila.shenoy@fmsd.org	SLP	B-3A	6456
Angelica Spaccarelli	angelica.spaccarelli@fmsd.org	SLP	B-3A	6456
Suzanne West	suzanne.west@fmsd.org	SLP	EDU	



Santee Elementary

24 - 25 Administration & Support Staff

Staff Name	Email	Title	Extension
Maria Reyes	maria.reyes@fmsd.org	Principal	6450
Alice Ledesma	alice.ledesma@fmsd.org	Secretary II	1632
Patricia Ruiz	patricia.ruiz@fmsd.org	Secretary I	1631
Christina Cervantes	christina.cervantes@fmsd.org	Library/Media Aide	1661
Elsy Martelli	elsy.martelli@fmsd.org	Community Liaison	1664
Shawna Luke	shawnodesa.luke@fmsd.org	Psychologist	1629
Jennifer Morfin	jennifer.morfin@fmsd.org	Social Worker	1663
Alejandra Fernandez	alejandra.fernandez@fmsd.org	Wellness Specialist	1663
Morgan King	morgan.king@fmsd.org	Wellness Coordinator	1608
Maria Elena Sandoval	maria.sandoval@fmsd.org	Food Service Lead	6457
Esther Corona	esther.corna@fmsd.org	Day Custodian	
Marcos Martinez	marcos.martinez@fmsd.org	Night Custodian	
Brenda Flores	bfloresl@catholiccharitiesscc.org	CORAL Director	1636
Rahul Khan	rkhan@littleheroes.org	Little Heroes Coach	1607



Santee Elementary



Santee School Instructional Bell Schedule 2024-2025



TK/Kindergarten

8:30 – 9:30 am Instructional Time
9:25 – 9:40 am Morning Recess
9:40 – 11:00 am Instructional Time
11:00 – 11:40am Lunch
11:40– 1:50 pm Instructional Time
1:50 pm End of Instructional Day

1st, 2nd, & 3rd Grade

8:30 – 10:00 am Instructional Time
10:10 – 10:25 am Morning Recess
10:25 – 11:30 am Instructional Time
11:30 – 12:10 pm Lunch
12:10 – 1:25 pm Instructional Time
1:25-1:40 pm Recess
1:40 - 2:50 pm Instructional Time
2:50 pm End of Instructional Day

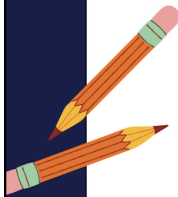


4th, 5th & 6th Grade

8:30 – 10:30 am Instructional Time
10:30– 10:45 am Morning Recess
10:45 – 12:15 pm Instructional Time
12:15– 12:53 pm Lunch
12:53 – 2:50 pm Instructional Time
2:50 pm End of Instructional Day

***NOTE: For TK/K grade levels, the instructional day ends at 12:15 pm on Thursdays and all adjusted days.**

For 1st-6th grade levels, the instructional day ends at 1:15 pm on Thursdays and all adjusted days.





Santee Elementary



Principal

Maria Reyes

1313 Audubon Drive
San Jose, Ca 95122

Attendance

Please call 283-6450 to report an absence.

Please attempt to schedule doctor, dentist and other appointments after school or during school breaks to maximize your child's learning opportunity.
Successful habits start today!

Mission

To develop the resourcefulness, resilience, and creativity necessary to be successful in today's and tomorrow's world, each child will engage in relevant project-based learning that incorporates science, technology, engineering, arts, and mathematics. Students will see themselves as community advocates and change agents who can positively impact their community.

NO SCHOOL - Holiday/School Break

September 2	Labor Day
October 7-11	Fall Break
November 11	Veteran's Day
November 25-29	Thanksgiving
December 16-January 3	Winter Break
January 20	MLK Jr. Day
January 27	Staff Development
February 17-21	February Break
April 21-25	Spring Break
May 26	Memorial Day

IMPORTANT DATES -Events

August 12	First Day of School
August 22	Back to School Night
November 18-22	1st Trimester Conferences
December 6	Friday Early Day - Staff Development
March 12-14	2nd Trimester Conferences
March 28	Friday Early Day - Staff Development
June 13	Last Day of School

School hours

Transitional Kinder (TK) & Kindergarten 8:30 am - 1:50 am
Thursday 12:15 pm early dismissal
1st - 6th 8:30 - 2:50pm
Thursday 1:15 pm early dismissal

Parent Communication

The primary mode of communication is through Parent Square. Parents are able to both receive and send messages via text or email to both their child's teacher and school principal. In order to stay in the loop for parent communication, please be sure your phone number is always current with the front office records. Parents can also visit our website www.santee.fmsd.org

2024-2025 SCHOOL CALENDAR

July 2024							August 2024							September 2024						
Sun	Mon	Tue	Wed	Thu	Fri	Sat	Sun	Mon	Tue	Wed	Thu	Fri	Sat	Sun	Mon	Tue	Wed	Thu	Fri	Sat
	1	2	3	4	5	6					1	2	3	1	2	3	4	5	6	7
7	8	9	10	11	12	13	4	5	6	7	8	9	10	8	9	10	11	12	13	14
14	15	16	17	18	19	20	11	12	13	14	15	16	17	15	16	17	18	19	20	21
21	22	23	24	25	26	27	18	19	20	21	22	23	24	22	23	24	25	26	27	28
28	29	30	31				25	26	27	28	29	30	31	29	30					

October 2024							November 2024							December 2024						
Sun	Mon	Tue	Wed	Thu	Fri	Sat	Sun	Mon	Tue	Wed	Thu	Fri	Sat	Sun	Mon	Tue	Wed	Thu	Fri	Sat
		1	2	3	4	5						1	2	1	2	3	4	5	6	7
6	7	8	9	10	11	12	3	4	5	6	7	8	9	8	9	10	11	12	13	14
13	14	15	16	17	18	19	10	11	12	13	14	15	16	15	16	17	18	19	20	21
20	21	22	23	24	25	26	17	18	19	20	21	22	23	22	23	24	25	26	27	28
27	28	29	30	31			24	25	26	27	28	29	30	29	30	31				

January 2025							February 2025							March 2025						
Sun	Mon	Tue	Wed	Thu	Fri	Sat	Sun	Mon	Tue	Wed	Thu	Fri	Sat	Sun	Mon	Tue	Wed	Thu	Fri	Sat
			1	2	3	4							1							1
5	6	7	8	9	10	11	2	3	4	5	6	7	8	2	3	4	5	6	7	8
12	13	14	15	16	17	18	9	10	11	12	13	14	15	9	10	11	12	13	14	15
19	20	21	22	23	24	25	16	17	18	19	20	21	22	16	17	18	19	20	21	22
26	27	28	29	30	31		23	24	25	26	27	28		23	24	25	26	27	28	29

April 2025							May 2025							June 2025						
Sun	Mon	Tue	Wed	Thu	Fri	Sat	Sun	Mon	Tue	Wed	Thu	Fri	Sat	Sun	Mon	Tue	Wed	Thu	Fri	Sat
		1	2	3	4	5					1	2	3	1	2	3	4	5	6	7
6	7	8	9	10	11	12	4	5	6	7	8	9	10	8	9	10	11	12	13	14
13	14	15	16	17	18	19	11	12	13	14	15	16	17	15	16	17	18	19	20	21
20	21	22	23	24	25	26	18	19	20	21	22	23	24	22	23	24	25	26	27	28
27	28	29	30				25	26	27	28	29	30	31	29	30					

School Events

Ice-Cream Social	Aug. 7	Lunar New Year	Jan. 29	Field Day	June 11
First Day of School	Aug. 12	TK/Kinder Open House	Feb. 11 8:45	TK Celebration	June 13, 9:00
Early Release	Aug. 14-18	Spring Conferences	Mar. 12-14	Kinder Promotion	June 13, 9:30
Back to School Night	Aug. 22	Easter Egg Hunt	Apr. 18	Sixth Grade Promotion	June 12, 9:00
Picture Day - Free Dress	Sept. 11	Community Exhibition	Apr. 17	Last Day	June 13
Halloween Parade	Oct. 31	Volunteer Appreciation	May 29	Community Circle	10/4, 11/1, 12/6
Fall Conferences	Nov. 18-22	End of Year Awards	Jun. 10		1/10, 2/7, 3/7,
Fall Book Fair	Nov. 18-22	Staff v. Students Game	June 11		4/4, 5/2
Winter Concert	Dec. 13				

School Uniforms

Common dress is not wearing a uniform but wearing the same color clothing. This is a way for all Santee students to be easily identifiable and aid in the uniformity of our school. Santee students will have the following common dress policy:

Shirts in black, gray or white - Appropriate logos are permitted.

Pants, shorts, skirts in black, gray, white or denim.

Santee t-shirts or sweatshirts.

Jackets, sweaters / sweatshirts: white, black or gray







Santee Elementary

Family Communication

Communication is key at Santee Elementary School! Your child's teacher and the school must be able to communicate with you. For us to do so effectively, we will need to have the most current information available for the following:

 <p>Email</p>	 <p>Cell Phone Number</p>	 <p>Mailing Address</p>
--	--	--

Please contact the Front Office at (408) 283-6450 if the above information changes. Having a current working phone number on file in an emergency is essential.

When contacting your child's teacher, please allow two school days for a response. Please note that teachers will be unable to respond during instructional time.

Santee Elementary School and teachers will use an application called [ParentSquare](#) to communicate with families regularly. All school announcements and weekly newsletters will be sent through ParentSquare. We ask that families download the application onto their phones to stay connected with their child's teacher and the school. You can also sign up for ParentSquare at https://www.parentsquare.com/join_school/new.



ParentSquare

Our school website will be regularly updated. For the latest information, families can always visit santee.fmsd.org.

To provide feedback to the school, we will periodically send surveys to families and students via ParentSquare. Thank you in advance for responding.

Our Front Office hours are 7:30 AM—4:00 PM, Monday through Friday, except for holidays and breaks.

1313 Audubon Drive • San Jose, California 95122 • (408) 283 - 6450 • santee.fmsd.org



Santee Elementary

Instruction and Learning

Teachers will be using our adopted curriculum aligned with [California Common Core Standards](#). Below is a table indicating our curriculum:

Subject	K	1	2	3	4	5	6
ELA	SEAL, Journeys Reading Program			Journeys Reading Program		Collections	
Math	Eureka Math					CPM	
Science	SEAL, Amplified Science			Amplified Science			
Social Studies	SEAL, TCI			TCI			
Social-Emotional Learning	No Place for Hate, Second Step, TSS, Common Sense Media						

To support individual student learning needs, teachers will use the following blended learning programs with students:

Subject	K	1	2	3	4	5	6
Reading							
Math K-6							



Santee Elementary

Family Guidelines

We look forward to working closely with the families to help our students thrive academically, socially, and emotionally to achieve success today and in the future.

As students engage in school, we suggest families follow these guidelines:

- ★ **Establish a routine at home to support learning** (i.e., have a regular bedtime and wake-up time).
- ★ **Check Parent Square communication daily to keep up with current assignments or notifications.**
 - Talk to your student's teacher about how you prefer to communicate.
 - If needed, ask for help accessing communication through ParentSquare.
- ★ **Ensure your student completes their assignments with integrity and academic honesty** (Students should always turn in assignments with their thoughts and work).
- ★ **Ask teachers, school staff, or others if you need help.**
 - Teachers and school staff want to know your questions and concerns.
 - If you think your child may be depressed, anxious, stressed, or in need of wellness services (i.e., counseling), or if your family has basic needs (e.g., housing, legal services, food, etc.), please reach out to your teacher or the front office we will be happy to connect you with our wellness team.

Student-Led Parent-Teacher Conferences

Student-Led Parent-teacher conferences are held two times per year. Parents are expected to attend conferences to learn about their child's progress.

Visiting School

Parents/guardians and guests must report to the office when families visit the Santee campus. If you wish to visit a classroom, please contact the teacher beforehand to schedule a mutually convenient time. Then, please sign in at the office and obtain a visitor's badge.

If you would like to bring birthday treats for your child, please coordinate with your child's teacher in advance.



Santee Elementary

Attendance

Consistent attendance is among the most critical factors in students' academic success. Students are expected to come to school every day, but if you cannot attend school, please inform your student's teacher and our front office at (408) 283-6450 or patricia.ruiz@fmsd.org. Our secretary will note the reason for the absence. The office is equipped with a 24-hour voicemail answering system. When calling about your child's absence, please provide the following information:

- Student's name and date of absence.
- Reason for absence (illness, family emergency, medical appointments, etc).
- Relationship of the caller to the student (parent, guardian, etc).

Important Note: If your child is absent three consecutive days or more, the school requires a doctor's note upon your child's return. If your child needs to be out for more than five days, please contact the front office to discuss the possibility of short-term independent study.

State law [ED Code, Sec 43504f] requires that school districts have written procedures for tiered re-engagement strategies for students with frequent absences. Santee School and the Franklin-McKinley School District will seek to communicate the importance of attendance to families, help them find solutions, and connect them with resources to reduce absenteeism.

DISTRICT PLAN Tiered Response to Support and Engage Families		
Tier 1 (Universal)	Tier 2 (Early Intervention)	Tier 3 (Intensive Support)
When a child is absent	3+ absences in a week or 5 absences in a month	5 absences in a week or 12+ absences in a month
(1) The teacher will contact family (2) The secretary will contact family and/or those on the emergency contact list	*School administrators and/or school social workers/counselors *School staff will work with families to devise an attendance improvement plan *A home visit will be conducted	*School-linked-services referral *District staff outreach *A home visit will be conducted



Santee Elementary

Common Dress Code Policy

The Franklin-McKinley School District believes a safe and disciplined learning environment is the first requirement of a high-performing school. School common dress will help minimize disruptive behavior, promote respect for oneself and others, build school/community spirit, and, more significantly, help to maintain high academic standards. Please see below for our district's common dress options.

✔ Appropriate:

Black, Gray, or Denim Bottoms

- Size appropriate/fitted
- Shorts hemmed not more than 5 inches above the knees
- The belt should not be worn below the waist

Black, Gray, or White Shirts

- Dress or casual Shirts
- T-shirts with appropriate logos are acceptable
- Short or long-sleeves
- Turtleneck is acceptable

✘ Not appropriate:

- Clothes with visible underwear
- Tank tops or spaghetti straps
- Gang-related clothing or articles
- Logos or images that depict drugs, alcohol, or any illegal item or activity
- Pictures and or language that create a hostile or intimidating environment based on any protected class
- Hoodies are not to be worn inside the classroom. The hoodies must lie on the student's shoulders.



Santee Elementary

Student Behavior Expectations

We have the following expectations for all students to help them and their classmates make the most of their learning time.

SANTEE	Classroom	Cafeteria	Bathrooms	Hallways	Playgrounds
Noise Levels	0, 1, 2	0, 1, 2	1	1	0, 1, 2, 3
B e Responsible	Be an active listener.	Use good table manners.	Use the bathroom quickly and adequately. Wash your hands.	Walk quietly and on the right-hand side.	Follow playground rules. Walk at all times. Line up quickly when recess is over.
E mpathetic	Support others when needed.	Only take food that you can finish eating.	Give people privacy. Wait your turn.	Make sure everyone is okay.	Allow everyone to play. Share the equipment.
A problem solver	Use resources in and around the room.	Clean up after yourself and encourage others to do the same.	See a problem, report the problem.	Look out for people who need help, help them out, or notify a teacher.	If you see someone in need or hurt, help them out.
R espectful	Respect others and classroom supplies.	Listen to all adults. Only eat your food.	Use level 1 voices.	Be aware that others are working and learning.	Respect people's turns and space. Use kind words. Listen to all adults.
S afe	Be an upstander to make your class inclusive of all learners.	Only eat when seated . Walk when entering and exiting.	Put trash in the garbage can. Keep water off the floor.	Walk quietly and on the right-hand side	Keep hands and feet to yourself.

Noise Level

- 0-Silent
- 1-Whisper
- 2-Normal Speaking Voice
- 3-Outside Voice

Bullying and All Forms of Harassment

Bullying and all forms of harassment are illegal and not tolerated on the school campus and during extracurricular activities. The school's administration will take disciplinary action to deter bullying of students and all forms of harassment. This may include, but is not limited to, community circles, home suspensions, and expulsion recommendations.



Santee Elementary

Office Referral Behaviors (Major Behaviors)

- Physical Safety Concerns
- Significant Property Damage (i.e., throwing desks)
- Sexual Harassment
- Racial Slurs/Comments
- Assault/Battery on School Employee
- Knife/Dangerous Object
- Robbery or Extortion
- Unlawful Possession of a Controlled Substance

- “Big Five” - Expulsionable Offences
- Brandishing a Knife
 - Sale, Possession, or furnishing of a firearm
 - Selling a Controlled Substance
 - Possession of an Explosive
 - Sexual Assault or Battery

Interventions/Consequences Assigned by Administration for Major Behaviors

Parent	Community Resource/ Organization	Service-Related	Reflection
<ul style="list-style-type: none"> • Family Meeting • Parent Classroom Visit • Parent Workshop 	<ul style="list-style-type: none"> • School Resource Officer Consult • Youth Probation Contact • Police Report • Safe School Initiative Referral • Firefighter Consult 	<ul style="list-style-type: none"> • Campus Beautification (i.e., trash pick up) • Service Learning • Other Community Service 	<ul style="list-style-type: none"> • Reflective Essay • Reflective Project/Presentation
Progress Monitoring	Student Support	Resolution	Administrative Actions
<ul style="list-style-type: none"> • Weekly Progress Reports • Check-In/Check-Out (i.e. HUG Form) 	<ul style="list-style-type: none"> • Referral to School Linked Services • Behavior Intervention Plan • SST • Interim Safety Measures • Enrollment in Program Teaching Prosocial Behavior, including After School • Administrative Placement • Change of Schedule to Mitigate Safety Concerns • Referral to the Student Attendance Review Board (SARB) 	<ul style="list-style-type: none"> • Restorative Practice/Conference with Student and Staff • Restitution 	<ul style="list-style-type: none"> • Loss of Privilege • Temporary Confiscation of Items • Loss of Recess • Transfer Revoked (if Applicable) • In-House Suspension • Out-of-School Suspension • Recommendation for Expulsion

Disclaimer: This manual is not all-inclusive and does not address all school situations. Santee reserves the right to alter or vary the application of school rules and policies. Additions and/or deletions to this manual are dictated by new policies or regulations adopted by the FMSD School Board and state and federal statutes.



Santee Elementary

THE NO PLACE FOR HATE® PLEDGE

SANTEE SCHOOL



01

I PROMISE to do my best to treat everyone fairly.

02

I PROMISE to do my best to be kind to everyone — even if they are not like me.

03

IF I SEE someone being hurt or bullied, I will tell a teacher.

04

EVERYONE should be able to feel safe and happy in school.

05

I WANT OUR SCHOOL to be No Place For Hate®.

Have You Signed the No Place For Hate® Promise Yet?
Find out how from your school's No Place For Hate® committee





Santee Elementary

Santee School Policies

These policies are meant to keep our students safe during school hours.

<p>School Wide Agreements</p>	<p>Santee Bears Are:</p> <ul style="list-style-type: none"> ● Respectful ● Responsible ● Kind ● Problem Solvers <p>in the classroom, on the playground, and throughout the school day.</p>
<p>Common Dress</p>	<p>All students are required to follow the common dress policy every day. Students will have the opportunity to earn free dress days throughout the year. The teacher will contact the parent when the student is not in common dress. For subsequent infractions, the office will contact the family. We request that you bring appropriate common attire to school, or a loaner will be supplied.</p> <p>Bottoms: Black, Gray, or Denim</p> <ul style="list-style-type: none"> ● Size appropriate/fitted ● Shorts hemmed not more than 5 inches above knees ● Belt should not be worn below waist <p>Tops: Black, Gray or White Shirts</p> <ul style="list-style-type: none"> ● Dress or casual Shirts ● T-shirts with appropriate logos ● Short or long-sleeves ● Turtleneck is acceptable <p>Not appropriate:</p> <ul style="list-style-type: none"> ● Clothes with visible underwear ● Pajama pants ● Tank tops or spaghetti straps ● Gang-related clothing or articles ● Logos or images that depict drugs, alcohol, or any illegal item or activity ● Images and or language that create a hostile or intimidating environment based on any protected class
<p>Cell Phones</p>	<p>It is preferred that cell phones do not come to school with students. You can contact your child through the office staff or their teacher. If a student brings a cell phone to campus, it must be off and in their backpack. If a cell phone is seen, the student will receive a warning. The second time it is seen, it will be confiscated and turned into the office. The parents will be contacted, and an adult (over 18) will have to come collect the phone.</p>



Santee Elementary

<p>Homework</p>	<p>Read each day: by making reading a part of the daily routine, you can help your child develop robust reading skills. Reading will become a positive habit for them, one they can carry into adulthood. Have your child spend time with books - TK-3rd grade students, 20 mins. 4th-6th grade students, 30 minutes. Reading fiction and non-fiction helps us become stronger communicators who are better at speaking and writing.</p> <p>All other homework varies by teacher. Please communicate with your child's teacher regarding expectations.</p>
<p>Attendance/ Tardies</p>	<p>Attendance Matters! Your child Matters! Every day counts! Make attendance a priority from the beginning to the end of the school year. As a parent, you can help your child develop good attendance habits that last a lifetime. Children with good attendance habits master fundamental reading, writing, and math skills. Do not waste valuable time taking children out of class early. Do everything you can to schedule dental or medical appointments outside school hours. The whistle is blown at 8:28. Students must be with their teacher by 8:30 AM. If students arrive after 8:35, they are late and must report to the school office. If you know your child will be absent for more than five consecutive days, please visit the office as soon as possible to be sure that appropriate documentation is completed and that the teacher can gather the work. If your child has been absent due to illness and needs medication during the school day, please visit the office for further information.</p> <p>TO REPORT STUDENT ABSENCE: Call (408) 283-6450</p>
<p>Toys</p>	<p>We ask that toys stay at home. If toys come to school, we are NOT responsible if they are lost, stolen, or damaged. If toys become a distraction, they will be confiscated, and the parent may be asked to come pick them up.</p>
<p>Healthy Snacks</p>	<p>All snacks brought from home should be nutritious, such as fruits and veggie sticks, cheese and crackers, nuts, and grains. <u>Students who eat nutritious snacks are more alert and ready to learn in the classroom.</u> Save snacks like chips, candy, and cookies for eating at home. The only beverage that should be brought to school is water.</p>
<p>Volunteers and Visitors</p>	<p>We welcome parent volunteers and visitors. All volunteers will need to be fingerprinted and cleared before starting. If you are interested in volunteering or visiting our school, please call or visit the office for more information @ 408) 283-6450</p> <ul style="list-style-type: none"> • Principal: maria.reyes@fmsd.org • Secretary II: alice.ledesma@fmsd.org • Secretary I: patricia.ruiz@fmsd.org • School website: www.santee@fmsd.org



Santee Elementary