

# Merrimack Valley Community Resource Manual



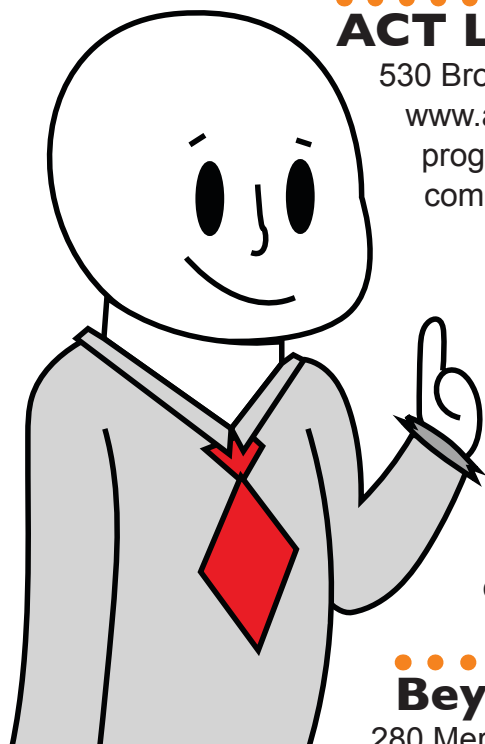
## Contents

**Youth and Family Serving Organizations**  
**After-School and Summer Programs**  
**Child Care Programs**  
**Disability-Related Services**  
**Domestic Violence Services**  
**Education Services**  
**English for Speakers of Other Languages  
(ESOL) Services**  
**Food Services**  
**Foster Care and Adoption Services**  
**Health Services**  
**Housing Services**  
**Immigration Services**  
**Juvenile Justice**  
**Legal Services**  
**LGBT Services<sup>3</sup>**  
**Mental Health Services**

**Parenting Programming**  
**Reproductive and Sexual Health Services**  
**Substance Abuse Services**  
**Youth Development and Job Training Programs**  
**School Listings**  
**Public Schools**  
**Regional Vocational Schools**  
**Charter Schools**  
**Special Education/Private Schools**  
**Head Start Programs**  
**Government Agencies**  
**County/State/Federal Resources**  
**City/Town Halls**  
**Parks and Recreation Departments**  
**Public Libraries**  
**Hotlines, Helplines, and Internet Resources**

## Youth and Family Serving Organizations

### After-School and Summer Programs



#### ACT Lawrence

530 Broadway, 3rd Fl, Lawrence, MA 01841 p: (978) 685-6274  
www.actinc.org Ages: 14–22 yrs Provides a six-week summer program offering “soft skills” job training, workshops, and practice in community organizing. Also offers housing services.

#### Andover Youth Services

40 Whittier Crt, Andover, MA 01810  
p: (978) 623-8360  
www.andoveryouthservices.com  
Ages: grades 5–12  
Provides summer and enrichment programs including volunteering, sports, wilderness, and arts opportunities. Also offers youth development opportunities (pg. 99).

#### Beyond Soccer, Inc.

280 Merrimack St, Ste 309, Lawrence, MA 01840  
p: (978) 681-5050

www.beyondsoccerlawrence.org : 4–18 yrs Provides soccer programs, academic mentoring/tutoring, nutrition education, leadership development, and summer enrichment. Also offers educational services and youth development opportunities.

#### Boys & Girls Club of Greater Haverhill

55 Emerson St, Haverhill, MA 01830

p: (978) 374-6171

www.haverhillbgc.org

Ages: grades 1–12 Provides after-school programs and summer camp. Transportation available for summer camp. Camp includes breakfast, lunch, a snack and all camp activities. Also offers career development services

#### Boys & Girls Club of Lawrence

136 Water St, Lawrence, MA 01841

p: (978) 683-2747

www.lawrencebgc.com grades 1–12

Provides summer activities beginning in July. Also offers after-school homework help



## **Boys & Girls Club of Lower Merrimack Valley**

18 Maple St, PO Box 5906, Salisbury, MA 01952

p: (978) 462-7003

www.bgclmv.org : grades 1–12

Provides an after-school program and summer camp that offers recreational activities and homework help. Transportation from some local schools available.



## **Boy Scouts of America – Spirit of Adventure Council 600**

West Cumming Park Dr, Ste 2750, Woburn, MA 01801 p: (617) 615-0004

www.scoutspirit.org

Ages: 5–21 yrs

Eligibility restrictions: boys only. Provides an after-school program and camps that offer recreational activities and leadership training for boys.



## **The Latchkey Enrichment Program**

Provides homework help, art activities, games, computer lab, violin lessons, physical activities, field trips, and special events. Operates in the Lawrence and Methuen Public Schools. Students who attend other schools may participate in the program at any of the locations. The 21st Century Community Learning Centers offer project-based learning opportunities for students at four Lawrence public schools Also offers daycare and parenting programming Additional locations include:

### **Early Learning Center**

11 Ballard Way, Lawrence, MA 01843

p: (978) 686-7196

### **Early Learning Center**

20 Ballard Way, Lawrence, MA 01843

p: (978) 686-0934

### **Teen Parent Infant/Toddler Program**

Lawrence High, 70 North Parish Rd, Lawrence, MA 01843 p: (978) 722-8492



## **Elevated Thought**

Everett Mills, 15 Union St, Mill F, Ste 42, Lawrence, MA 01840 p: (978) 420-7920

e: info@elevatedthought.org www.elevatedthought.org Ages: 12–18 yrs

The C3 Program encourages youth to explore local societal issues through various art medium. The Wall Speak Program pairs professional artists with youth for public art projects to beautify the city. Also offers youth development opportunities



## **Essex Art Center**

56 Island St, Lawrence, MA 01840

p: (978) 685-2343

e: info@essexartcenter.org www.essexartcenter.org

Ages: 4+ yrs Hours: M–F 10–6

Provides a variety of art classes and one day art workshops for youth during school vacations.



## **Girl Scouts of Eastern Massachusetts**

95 Berkeley St, # 404, Boston, MA 02116

p: (800) 882-1662

www.gsema.org

Eligibility restrictions: girls and women only

Ages: grades K–12

Provides an after-school program and summer camps that offer recreational activities and leadership training.



## **Girls Inc of Greater Haverhill**

7 William St, Haverhill, MA 01830

p: (978) 372-0771

Eligibility restrictions: girls only Ages: grades K–8

Provides academic enrichment and programs focused on economic literacy, pregnancy prevention, drug abuse, bullying prevention, community leadership, media literacy, self-defense, sports, Latina empowerment, and general health. Also offers educational services (pg. 32) and youth development programs (pg. 100).



## **Greater Lawrence Community Action Council, Inc (GLCAC)**

305 Essex St, Lawrence, MA 01840

p: (978) 681-4900 f: (978) 681-4949

e: admin@glcac.org www.glcac.org

Also offers child care (pg. 16), Head Start programs (pg. 32), ESOL services (pg. 36), housing services (pg. 57), immigration services (pg. 64), and parenting programs (pg. 88).



## **Greater Lawrence Community Boating Program**

1 Eaton St, Lawrence, MA 01842

p: (978) 681-8675 f: (978) 681-7805

www.boatingprogram.com Ages: all

Provides affordable boating opportunities on the Merrimack River including summer programs and crew and rowing teams.



## **Groundwork Lawrence**

50 Island St, Ste 101, Lawrence, MA 01840

p: (978) 974-0770 f: (978) 655-1337

www.groundworklawrence.org

Ages: K–adult Provides after-school and summer work opportunities with hands-on learning experiences through schoolyard gardens, hydroponics, and outdoor exploration. Also offers vocational training and work opportunities in environmental fields



## **Imagine That**

354 Merrimack St, Bldg 1, Ent A, 2nd Fl, Lawrence, MA 01843 p: (978) 682-5338 f: (978) 849-9990  
www.imajinethat.com Ages: 4wks–14 yrs  
Hours: M–Th & Su 9–5; F–Sa 9–8

Provides an after-school program that offers homework support, academic skills, hands on science, arts, music, and a Kinderlab Robotics program. Also offers child care (pg. 16).



## **Ironstone Farm**

450 Lowell St, Andover, MA 01810  
p: (978) 475-4056 f: (978) 475-4046  
www.ironstonefarm.org

Eligibility restrictions: physical, cognitive, or emotional disability Ages: 3 yrs–adult Provides therapeutic and recreational services for people with physical, cognitive, and emotional disabilities and communication disorders using horses and the working farm environment. Also offers disability-related services



## **Lawrence Community Works**

168 Newbury St, Lawrence, MA 01841  
p: (978) 685-3115 f: (978) 683-3946  
www.lawrencecommunityworks.org Ages: 14–18 yrs

Provides an after-school creative co-op, **Movement City**, offering academic support, workshops, discussion groups, and internships with a separate four week summer program available. Also offers ESOL classes, training to support homeownership), and youth development .



## **Merrimack Valley Community Service Corps**

264 Essex St, Lawrence, MA 01840  
p: (978) 686-9407  
www.mymvcsc.org

Ages: 11–18 yrs Provides the Youth Volunteer Corps of America offering volunteer opportunities to youth during the summer



## **Methuen Arlington Neighborhood, Inc**

141 Tenney St, Methuen, MA 01844  
p: (978) 691-5645 f: (978) 691-5645  
www.methuenarlington.com Fees: none

Provides the Homework Help Center, the Summer Parks Program (a structured summer alternative), and the MVP Program which focuses on teen empowerment. Also offers educational services (pg. 34) and youth development programs



## **Phillips Academy**

180 Main St, Andover, MA 01810  
p: (978) 749-4000  
www.andover.edu

(MS)2 - Math & Science for Minority Students

p: (978) 749-4402

e: ms2@andover.edu [www.andover.edu/SummerSessionOutreach](http://www.andover.edu/SummerSessionOutreach)

Eligibility restrictions: low-income Latino, African American, or Native American youth accepted through application

Ages: grade 9 Fees: none

Offers a three summer residential program that provides science, math, and English enrichment as well as college counseling.

### **PALS Program**

p: (603) 960-0874

[www.andover.edu/SummerSessionOutreach](http://www.andover.edu/SummerSessionOutreach)

Eligibility restrictions: Parthum or Leonard middle school

students recommended by teacher Ages: middle school Fees: none

Provides a two-year, year-round program that provides academic enrichment, study skills, and learning strategies for Lawrence middle school students and assists them with the high school application process



### **Prep@Pingree**

537 Highland St, So Hamilton, MA 01982 p: (978) 468-4415 ext 265

[www.pingree.org](http://www.pingree.org)

Ages: grades 7–8 Fees: none

Provides a five week summer academic enrichment and secondary school scholarship program enrolling current seventh and eighth grade students primarily from Lawrence and Lynn.



### **Salvation Army**

[www.SalvationArmyMA.org](http://www.SalvationArmyMA.org) [www.campwonderland.org](http://www.campwonderland.org) Ages: 6–17 yrs

The following locations refer children to off-site summer or winter sessions at Camp Wonderland.

These week-long sessions feature arts and crafts, boating, swimming, ropes courses, camping, go-carts, and other recreational activities.

#### **Haverhill**

395 Main St, Haverhill, MA 01830

p: (978) 420-4192

[www.SalvationArmyMA.org/Haverhill](http://www.SalvationArmyMA.org/Haverhill)

#### **Lawrence**

250 Haverhill St, Lawrence, MA 01840

p: (978) 682-8038

[www.SalvationArmyMA.org/Lawrence](http://www.SalvationArmyMA.org/Lawrence)

Also offers food services, housing assistance, juvenile justice services, and youth development Also offers food services, housing assistance, juvenile justice services, and youth development.



### **SHED, Inc**

65 Phillips St, Andover, MA 01810

p: (978) 684-5050 f: (978) 636-4800

[www.shedinc.org](http://www.shedinc.org) Ages: grades pre-K-8

Provides before- and after-school programs and summer programs for children. Also offers child care programs (pg. 16).





## **Si, Se Puede, Inc**

Merrimack Courts Housing Project

675 Essex St, #4-1, Lawrence, MA 01841 Mailing: PO Box 53, North Andover, MA 01845 p: (978) 685-4074

[www.ssplawrence.org](http://www.ssplawrence.org)

Eligibility restrictions: ESOL students Ages: grades 1–12 yrs Fees: none

After-school program provides homework assistance, group activities, and mentoring. Summer program is available for students who participate in the after-school program. Also offers education services (pg. 35) and youth development programs.



## **Squashbusters Lawrence**

60 Island St, Lawrence, MA 01840 p: (978) 566-9077

e: [d.lubin@squashbusters.org](mailto:d.lubin@squashbusters.org) [www.squashbusters.org](http://www.squashbusters.org)

Eligibility restrictions: students at Arlington and Whetherby Schools entering grade 6 : grades 6–12 Provides a long-term, intensive youth development program that combines the sport of squash with academic enrichment, community service, summer opportunities, and college counseling and support.



## **YMCA of the North Shore**

[www.northshoreymca.org](http://www.northshoreymca.org)

Haverhill YMCA

81 Winter St, Haverhill, MA 01830

p: (978) 374-0506

Provides after-school program with gym games, arts and crafts, and healthy snacks. Before-school, vacation, and holiday care options available. Also provides full-day summer camp. Also offers child care, housing services, and youth development opportunities



## **YMCA - Merrimack Valley**

[www.mvymca.org](http://www.mvymca.org)

Provides after-school and summer programs. Also offers child care

### **Andover/North Andover YMCA**

165 Haverhill St., Andover, MA 01810

p: (978) 685-3541 f: (978) 685-0126

Ages: vary by program

A variety of programs for summer and after-school programs including swimming, arts and crafts, and other various sport activities.

### **Lawrence YMCA**

40 Lawrence St, Lawrence, MA 01840

p: (978) 686-6191 f: (978) 687-4541

After-school program provides homework assistance, physical activity, and other fun projects.

### **Methuen YMCA**

129 Haverhill St, Methuen, MA 01844

p: (978) 725-6681 f: (978) 687-1089

After-school programs available to provide homework assistance, physical activities, and other fun projects.

## **Youth Development Organization (YDO)**

15 Union St, Ste 563, Lawrence, MA 01840

p: (978) 688-4300 f: (978) 688-4302

www.ydolawrence.org

Ages: 8–18 yrs Fees: none for Lawrence residents

Provides individualized after-school, summer enrichment, and academic programs to low to moderate income youth. Also offers education services and youth development programs

## **YWCA of Greater Lawrence**

38 Lawrence St, Lawrence, MA 01840

p: (978) 687-0331 f: (978) 689-4080

www.ywcalawrence.org

Provides after-school programs offering snacks, homework assistance, and physical activities and hosts summer camps. Also offers domestic violence services (pg. 30), health services (pg. 55), housing services (pg. 62), parenting programs (pg. 91), and youth development opportunities (pg. 104). Additional location includes:

### **YWCA Fina House**

203 Haverhill St, Lawrence, MA 01840

p: (978) 682-3039

## **YWCA of Haverhill**

107 Winter St, Haverhill, MA 01830

p: (978) 374-6121

www.ywcahaverhill.org

Ages: 5–14 yrs Fees: vary

Hours: M–F 2:30–6; summer/school vacations 7:30–5:30

Provides after-school and summer programs. Also offers domestic violence services (pg. 30), health services (pg. 55), and youth development programs (pg. 104).

## **Child Care Programs**

### **Bethel Childcare Services Inc**

360 Merrimack St, Ste 45, Lawrence, MA 01843

p: (978) 458-6577 f: (978) 441-1137

toll-free: (800) 244-8758 www.bethelccs.com

Provides referrals to a network of home-based child care.

### **Child Care Circuit**

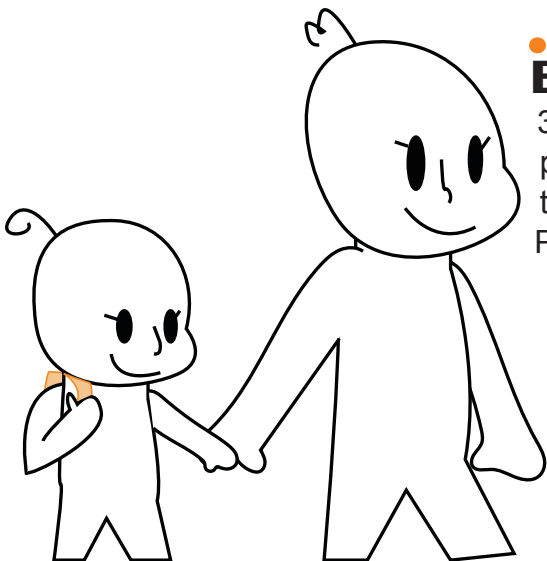
190 Hampshire St, Lawrence, MA 01840

p: (978) 686-4288 f: (978) 975-3120

www.childcarecircuit.org

Ages: vary by program

Child care resource, referral, and training agency. Provides





vouchers to parents for after-school child care depending on the availability of funds and eligibility restrictions. Also offers parenting support and resources



## **Child Development & Education Inc**

10 Cabot Rd, Ste 201, Medford, MA 02155

p: (781) 393-5100

[www.cdedu.us](http://www.cdedu.us)

Provides early education and child care with transportation.

### **Haverhill**

76 Merrimack St, Unit 8B, Haverhill, MA 01830 p: (978) 372-0619

### **Lawrence**

12 Methuen St, 1st Fl, Lawrence, MA 01840 p: (978) 687-9133



## **Children's Center of Faith United Methodist of Methuen**

35 Lowell St, Methuen, MA 01844

p: (978) 685-6469

Daycare center and preK.



## **Clarendon Family Day Care, Inc**

101 Amesbury St, Ste 102, Lawrence, MA 01840

p: (978) 691-0018 f: (978) 683-9298

[www.clarendonfamilydaycare.org](http://www.clarendonfamilydaycare.org)

Ages: birth–13 yrs Fees: financial assistance available.

Provides a culturally diverse, year-round, full-day educational child development program. Also offers nighttime and weekend child care options.



## **Community Action, Inc (CAI)**

3 Washington Sq, 3rd Fl, Haverhill, MA 01830 p: (978) 373-1971

[www.communityactioninc.org](http://www.communityactioninc.org). Provides family day care, playgroups, and Head Start programming as detailed below.

### **Family Day Care**

75 Elm Street, Haverhill, MA 01830

p: (978) 373-1971

Ages: 8 wks–12 yrs Hours: M–F 8–5

Comprehensive services for children in licensed and monitored day care homes.

### **Head Start and Early Head Start**

75 Elm Street, Haverhill, MA 01830

p: (978) 372-5052

Ages: 0–5 yrs

### **Early Head Start Goldman Center**

230 Hilldale Ave, Haverhill, MA 01830

p: (978) 241-4261

Ages: 0–3 yrs

Serves Amesbury, Boxford, Georgetown, Groveland, Haverhill, Merrimac, Newbury, Newburyport, Rowley, Salisbury, and West Newbury

## **Family & Community Connection**

346 Broadway, Haverhill, MA 01832

p: (978) 374-2198

Ages: 0–8 yrs Fees: free or very low cost

Offers playgroups, support groups, and age-appropriate play spaces at different locations.

Also offers education/training programs, ESOL classes, food services, housing assistance, and parenting programs.



## **Community Day Learning**

p: (978) 685-1227 Lawrence, MA

p: (978) 685-4122 (family daycare program) Ages: 2 mo–12 yrs

Provides home-based child-care in Lawrence and Methuen. Also provides child-care and other services at locations below:

### **Early Learning Center**

p: (978) 686-7196 Lawrence, MA

Ages: 4 yrs–K

Offers child care for preschoolers and kindergarten age children.

### **Early Learning Center**

p: (978) 686-0934 Lawrence, MA Ages: 15 mo–3 yrs

Offers child care for toddlers and preschool age children.

### **Teen Parent Infant/Toddler Program**

p: (978) 722-8492 Lawrence, MA

Ages: 2 mos–3 yrs 9 mos Fees: none, accepts vouchers Eligibility restrictions: parents under 20 yrs and in school. Offers child care with after-school activities and extended care for teens.



## **Davinci Child Center**

55 Avon Street, Lawrence, MA 01841

p: (978) 725-2517

e: [davincichildcenter@hotmail.com](mailto:davincichildcenter@hotmail.com)

Ages: birth–8 yrs

Provides a safe, nurturing, and supportive environment that focuses on offering students learning tools that will continue to encourage success throughout their future.



## **Greater Lawrence Community Action Council, Inc (GLCAC)**

p: (978) 681-4900 Lawrence, MA

p: (978) 681-4910 (child care center) Ages: 15 mos–4 yrs

Offers full-time/full-year comprehensive and educational services for toddler and preK children.



## **Imagine That**

p: (978) 682-5338 Lawrence, MA

Imagine That University offers care for infants, toddlers, and preschoolers. Also offers evening child care.



## **Kathy Herward Child Care Center**

310 Lowell St, Andover, MA 01810

p: (978) 684-4560 or (978) 684-4646

myclassroomconnection.com/preschools/KHCCC Ages: 3 mo–6 yrs

Provides care for children that fosters a positive self-image while cultivating observational, social, emotional, and motor skills.



## **Kid Start, Inc**

444 North Canal St, Lawrence, MA 01840 p: (978) 686-7673

e: info@kidstart.com www.kidstart.com

Provides a large network of home-based providers serving Greater Lawrence as well as a child care center with transportation.



## **Little Sprouts**

p: (877) 977-7688

e: inquiries@littlesprouts.com www.littlesprouts.com

Ages: 1 mo–6 yrs Offers child care and summer programs at locations in Andover, Haverhill, Lawrence, Lowell, and North Andover with varying programs for children.



## **SHED, Inc**

p: (978) 623-8460 Andover, MA

Provides day programs for preK and kindergarten children.



## **YMCA of the North Shore**

www.northshoreymca.org

### **Haverhill YMCA**

p: (978) 374-0506 ext 4

Ages: 6 wks–2.9 yrs

Offers child care for infants and toddlers that includes early learning, swimming, and other physical activities. Half-day and full-day options. Also offers preK program.



## **YMCA - Merrimack Valley**

www.mvymca.org

Offers child care for preschoolers with physical activities and education designed for each specific age group and individual. Preschoolers must be enrolled full-time.

### **Andover/North Andover YMCA**

p: (978) 685-3541 ext 126

Ages: 15 mos–5 yrs

### **Lawrence YMCA**

p: (978) 686-6191 ext 18

Ages: 2.9–5 yrs

### **Methuen YMCA**

p: (978) 725-6681

p: (978) 683-5266 (child care center) Ages: 15+ mos

## Disability-Related Services

### Alternative Home

#### Health Care LLC

12 Baldwin St, Ste 1, Methuen, MA 01844  
p: (978) 657-7444 f: (978) 657-7455  
www.alternativehomehealthcarellc.com

Ages: 3+ yrs

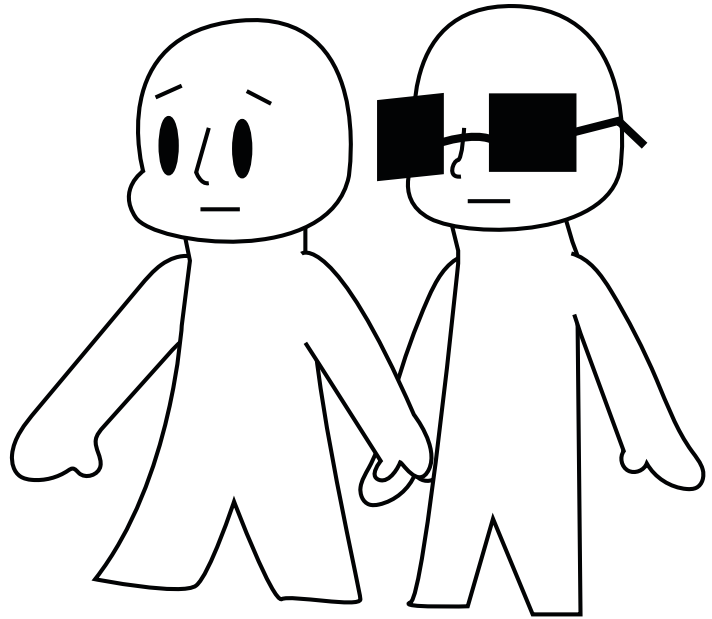
Provides skilled nursing, physical therapy, occupational therapy, and speech therapy home health aide with 24-hour on call services.

### Angel Care Kids Therapy

#### Center, Inc

969 Main St, Haverhill, MA 01830  
p:(978) 521-6150 f: (978) 521-2659  
www.angelcarekids.com

Ages: infant–18 yrs Provides evaluation, assessments, and services in occupational therapy, including sensory-related issues, and speech therapy.



### The Arc of Greater Haverhill-Newburyport

57 Wingate St, Ste 301, Haverhill, MA 01832  
p: (978) 373-0552

e: info@thearcofghn.org www.thearcofghn.org

Eligibility restrictions: developmental or intellectual disability Ages: 16–22 yrs

Recreation, transition services, and Adult Family Care for adolescents with developmental disabilities.

### Best Buddies Massachusetts

45 Bromfield St, 7th Fl, Boston, MA 02108 p: (617) 778-0522 f: (617) 778-0526

e: massachusetts@bestbuddies.org www.bestbuddies.org/massachusetts

Eligibility restrictions: intellectual or developmental disability Ages: all

Provides individuals with disabilities one-on-one friendships that foster growth at school, work, and in the community.

### Children's Law Center of Massachusetts

298 Union St, Lynn, MA 01901

p: (781) 581-1977 f: (781) 598-9364

toll-free helpline: (888) KIDLAW8 or (888) 543-5298 www.clcm.org

Eligibility restrictions: low-income Ages: 0–22 yrs

Provides comprehensive legal services to students with disabilities in a variety of matters including restraint, seclusion, school discipline, special education, and related matters and offers a toll-free

helpline providing assistance and guidance. Also advocates for non-disabled students in education matters, court assigned care and protection, abuse and neglect, and foster care matters, immigration issues, juvenile justice cases (pg. 66), and legal representation to low-income children in civil issues.



## **CLASS, Inc**

(ARC of Greater Lawrence)  
1 Parker St, Lawrence, MA 01843  
p: (978) 975-8587  
www.classinc.org

Ages: 12+ yrs

Provides transition planning workshops to help parents and youth prepare for the move from special education to adult services.



## **Disability Law Center**

11 Beacon St, Ste 925, Boston, MA 02108  
p: (617) 723-8455 f: (617) 723-9125  
toll-free: (800) 872-9992 www.dlc-ma.org

Ages: all

Provides advocacy and referrals for adults and children with disabilities to address health care, school exclusion, and public benefits issues. Also provides legal services (pg. 69)



## **EMARC**

26 Princess St, Wakefield, MA 01880  
p: (781) 942-4888 f: (781) 942-0820  
www.theemarc.org

Provides adult foster care, residential services, job placement, family support groups, and children's recreation programs.



## **Federation for Children with Special Needs**

529 Main St, Ste 1M3, Boston, MA 02129  
p: (617) 236-7210 f: (617) 241-0330  
toll-free: (888) 331-0688 e: info@fcsn.org www.fcsn.org

Eligibility restrictions: child with a disability Ages: all Provides information, support, and assistance to parents of children with disabilities. Services include assistance with special education and special health care needs. Also offers parent education and support.



## **Friendship Connection**

28 West Main St, Georgetown, MA 01833 p: (978) 352-0139  
www.friendshipconnectiononline.com

Eligibility restrictions: children with certain developmental or behavioral health concerns

Provides group programs for social skills development, parent/child groups, play groups, toilet training workshops, summer programs, and outings.



## **Ironstone Farm**

p: (978) 475-4056 Andover, MA

Provides therapeutic and recreational services for people with disabilities using horses and the working farm environment.



## **Kids in Disability Sports (K.I.D.S.)**

220 Pawtucket St, Lowell, MA 01853

p: (866) 712-7799

[www.kidsinc.us](http://www.kidsinc.us)

Ages: 6+ yrs

Provides a variety of sports, social, and recreational activities for individuals of all ages with all types of disabilities.



## **Massachusetts Advocates for Children**

25 Kingston St, 2nd Fl, Boston, MA 02111 p: (617) 357-8431 f: (617) 357-8438

helpline: (617) 357-8431 ext 224 [www.massadvocates.org](http://www.massadvocates.org)

Ages: up to 21 yrs

Provides legal services with an emphasis on policy to children experiencing barriers to education due to disabilities, homelessness, suspension or expulsion, or domestic violence. Also offers helpline for information, assistance, and referrals



## **Massachusetts Bureau of Special Education Appeals (BSEA)**

1 Congress St, 11th Fl, Boston, MA 02114 p: (617) 626-7250 f: (617) 626-7220

[www.mass.gov/anf/bsea](http://www.mass.gov/anf/bsea)

Eligibility restrictions: issues regarding special education services Ages: 3–22 yrs

Conducts mediations and hearings to resolve disputes about special education services or placements between parents, school districts, private schools, and state agencies . Parents or school districts may request assistance.



## **Massachusetts Commission for the Blind**

600 Washington St, Boston, MA 02111

p: (617) 727-5550 f: (617) 626-7685

voice: (800) 392-6450 TDD: (800) 392-6556

[www.mass.gov/mcb](http://www.mass.gov/mcb)

Eligibility restrictions: vision loss Ages: all

Provides services for the blind, including case management, independent living services, assistive technology, medical assistance, and other specialized services.





## **Massachusetts Commission for the Deaf and Hard of Hearing**

600 Washington St, Boston, MA 02111  
p: (617) 740-1600 f: (617) 740-1810  
voice: (617) 326-7546 TTY: (617) 740-1700  
[www.mass.gov/mcdhh](http://www.mass.gov/mcdhh)

Eligibility restrictions: hearing loss Ages: all  
Provides services to support deaf and hard of hearing individuals, including education assistance, interpreter referrals, and case management.



## **Massachusetts Department of Developmental Services (DDS)**

500 Harrison Ave, Boston, MA 02118  
p: (617) 727-5608 f: (617) 624-7577  
TTY: (617) 624-7783  
e: [DDS.Info@state.ma.us](mailto:DDS.Info@state.ma.us) [www.mass.gov/dds](http://www.mass.gov/dds)

Eligibility restrictions: intellectual or developmental disability Ages: all. Provides case management and a wide range of services including residential programs, vocational training, and specialized training enabling independent living for adults and children. Area Offices are a resource for children already deemed eligible for DDS services.

The Region office handles all eligibility determinations for the entire region.

### **Merrimack Valley Area Office**

280 Merrimack St, Lawrence, MA 01843  
p: (978) 521-9432 f: (978) 521-9439  
TTY: (978) 521-4391

Serves Amesbury, Andover, Boxford, Georgetown Groveland, Haverhill, Lawrence, Merrimac, Methuen, Newbury, Newburyport, North Andover, Rowley, Salisbury, and West Newbury

### **Northeast Region Office**

Hogan Regional Center, 450 Maple St, Danvers, MA 01923 p: (978) 774-5000 ext 850 (eligibility and intake)



## **Massachusetts Department of Elementary and Secondary Education (DESE)**

75 Pleasant St, Malden, MA 02148  
p: (781) 338-3700 f: (781) 338-3710  
TTY: (800) 439-2370  
[www.doe.mass.edu/pqa](http://www.doe.mass.edu/pqa)

Ages: 3–22 yrs

The Program Quality Assurance (PQA) division investigates and resolves complaints from the public that public elementary and secondary schools have violated a law relating to education. Also provides general information regarding schools' legal obligations for education



## **Massachusetts Rehabilitation Commission (MRC)**

600 Washington St, Boston, MA 02111

p: (617) 204-3600 f: (617) 727-1354

voice/TDD: (800) 245-6543

[www.mass.gov/mrc](http://www.mass.gov/mrc)

Eligibility restrictions: disability

Ages: 14+ yrs

Provides supported living, transition to adulthood, and home care assistance programs as well as vehicle and housing modifications. Also provides job training services.

### **Lawrence Area Office**

280 Merrimack St, 3rd Fl, Lawrence, MA 01843 p/TTY: (978) 685-1731 f: (978) 975-9907

Serves Amesbury, Andover, Boxford, Georgetown, Groveland, Haverhill, Lawrence, Merrimac, Methuen, Newbury, Newburyport, North Andover, Rowley, Salisbury, and West Newbury



## **Northeast Arc**

6 Southside Rd, Danvers, MA 01923

p: (978) 762-8352

TTY: (978) 762-4873

[www.ne-arc.org](http://www.ne-arc.org)

Eligibility restrictions: disability

Ages: vary by program Through its Center for Developmental Excellence, provides a wide range of services for individuals with developmental differences and disabilities including advocacy to ensure children are receiving appropriate educational supports; the Spotlight Program; in-home ABA assessments and supports; recreational activities; and transition services for individuals ages 14–25 yrs. Employment and community living supports are also available.

### **Adult Family Care (AFC) and Personal Care Management (PCM)**

p: (978) 624-2313 (AFC) Danvers, MA

p: (978) 624-2330 (PCM) MassHealth-funded programs, PCM offers home-based support to individuals requiring physical help with daily living activities and AFC supports individuals 16 yrs and older living with related or non-related family.

### **Autism Support Center**

p: (978) 777-9135 Danvers, MA

toll-free: 800-7-AUTISM

Support groups for families; training for parents; and information, referrals, and fun family events.

### **Building Blocks Intensive Early Intervention**

p: (978) 624-2320 Danvers, MA

Ages: 0–3 yrs

Eligibility restrictions: autism spectrum disorder and receiving early intervention services Serves Northeastern Massachusetts. Autism specialty services supervised by Board Certified Behavior Analysts, using an approach based on the Early Start Denver Model.

### **Employment and Day Supports**

16 Electronics Ave, Danvers, MA 01923

p: (978) 624-3050

Ages: vary

Provides employment supports including assessments, training, education, job development, and job coaching. Services are offered in a variety of settings. Community-based day supports and day habilitation also available.



## **Northeast Family Services**

280 Merrimack St, Ste 312, Lawrence, MA 01843

p: (774) 206-1125 f: (774) 628-9657

[www.northeastfamilyservices.com](http://www.northeastfamilyservices.com)

Ages: vary by program

Provides ABA services. Agency also offers in-home therapy, in-home behavioral services, and therapeutic mentoring



## **The Northeast Independent Living Program, Inc**

20 Ballard Rd, Lawrence, MA 01843

p/TTY: (978) 687-4288 f: (978) 689-4488

[www.nilp.org](http://www.nilp.org)

Eligibility restrictions: individuals with any disability

Ages: 14+ yrs

Provides support services including peer counseling, skills training, and personal care attendants to individuals with disabilities. Also offers mental health services .



## **Partners for a Greater Voice**

PO Box 734, Ipswich, MA 01938

p: (978) 312-1200

e: [info@greatervoice.com](mailto:info@greatervoice.com) [www.greatervoice.com](http://www.greatervoice.com)

Offers consultation, life coaching, child-advocacy, support in mainstream, and family guidance for families of deaf children. Educational workshops also offered.



## **Professional Center for Child Development**

[www.theprofessionalcenter.org](http://www.theprofessionalcenter.org)

Eligibility restrictions: developmental disability Ages: vary by program

Serves Andover, Lawrence, Methuen, and North Andover

Provides Early Intervention services including preK programs, playgroups, and developmental pediatric therapy. Also provides parenting programming

### **Andover**

32 Osgood St, Andover, MA 01810

p: (978) 475-3806 f: (978) 475-6288

This location has a parent library with materials about many physical and mental health issues.

### **Lawrence**

439 South Union St, Bldg 1, Ste 110, Lawrence, MA p: (978) 688-5070 f: (978) 688-0712



## **South Bay Community Services**

[www.southbaycommunityservices.com](http://www.southbaycommunityservices.com)

Early Childhood Services

360 Merrimack St, Bldg 5, Unit F, Lawrence, MA 01843 p: (978) 620-0290 f: (978) 688-0531

p: (800) 244-4691 (referral line)

Ages: 0–3 yrs

Serves Andover, Methuen, Lawrence, and North Andover

Provides Early Intervention services including observations and evaluation, service coordination, playgroups, ABA program for children with autism, and referrals to specialty services for eligible children. Also offers mental health services at the following location :

**Lawrence Mental Health Clinic**

360 Merrimack St, Bldg 9, Unit H, Lawrence, MA 01843 p: (978) 620-4830 f: (978) 688-4901

.....  
**U.S. Department of Education (DOE)**

Boston Office, 5 Post Office Sq, 8th Fl, Boston, MA 02109 p: (617) 289-0111 f: (617) 289-0150  
TDD: (800) 877-8339

e: OCR.Boston@ed.gov www2.ed.gov/about/offices/list/ocr/ Ages: all

The Office for Civil Rights (OCR) is a division of the federal education agency that investigates and resolves complaints of discrimination, including on the basis of a disability, against educational institutions. Also provides free information and training on federal civil rights laws relating to education

.....  
**Vinfen**

439 South Union St, Bldg 2, Ste 104, Lawrence, MA 01843

p: (978) 469-8245

www.vinfen.org

Eligibility restrictions: any disability Ages: 14–25 yrs

Provides various services including substance abuse referrals and employment training opportunities to enhance the overall well-being. Also offers mental health services

.....  
**Windrush Farm**

479 Lacy St, North Andover, MA 01845

p: (978) 682-7855 f: (888) 642-4907

www.windrushfarm.org

Ages: 2+ yrs

Provides equine assisted activities for children with disabilities, including therapeutic riding, hippotherapy, and barn management opportunities.

**Domestic Violence Services**



.....  
**Alternative House**

PO Box 2100, Lowell, MA 01853

p: (978) 937-5777 f: (978) 937-5595

www.alternative-house.org

Provides shelter, support, advocacy, and counseling for battered women. Also offers community education and housing services



## **Child at Risk Hotline (DCF 24-Hour Hotline)**

toll-free: (800) 792-5200

Provides after-hours emergency response system for crisis intervention, information, or referrals for children in danger. Also offers after-hours urgent assistance for youth in foster care



## **Community Teamwork**

17 Kirk St, Lowell, MA 01852

p: (978) 459-0551 f: (978) 453-9128

[www.commteam.org](http://www.commteam.org)

Provides transitional and emergency housing for victims of domestic violence. Also offers housing services as well as youth development and job training services



## **Family Safety Project**

Riverwalk, 360 Merrimack St, 2nd Fl, Lawrence, MA 01843 Mailing: Holy Family Hospital, 70 East St, Methuen, MA 01844

Children's Services

p: (978) 989-9361 ext 10

Ages: 3+ yrs Individual counseling and group counseling for children over three years old who have witnessed domestic violence.

Intimate Partner Abuse Education Program

p: (978) 989-0607 ext 12

Provides education and intervention to individuals who have used violence in a relationship.



## **Responsible Fatherhood Program**

p: (978) 989-0607 ext 10

Provides a parenting skill program for fathers to learn about limit setting, child development, and the effects of abusive relationships on children. Also offers therapeutic groups.



## **GLBTQ Domestic Violence Project**

995 Massachusetts Ave, Cambridge, MA 02139 [www.glbtdvp.org](http://www.glbtdvp.org)

p: (617) 779-2127 (sexual assault helpline)

Support for gay, lesbian, bisexual, transgender, and queer victims of abuse through direct services, education, and advocacy



## **Healing Abuse Working for Change (HAWC)**

27 Congress St, Salem, MA 01970

p: (978) 744-8552 f: (978) 745-6886

hotline: (800) 547-1649 TTY: (978) 744-1818

[www.hawcdv.org](http://www.hawcdv.org)

Ages: all Hours: M-F 9-5

Serves Boxford, Georgetown, Ipswich, Rowley, and Topsfield

Provides a statewide 24-hour abuse hotline as well as center-based advocacy assistance, individual counseling, support groups, hospital collaboration, emergency shelter, parent/child trauma recovery, and community education programs for abuse victims.



## **Jane Doe Inc**

14 Beacon St, Ste 507, Boston, MA 02108

p: (617) 248-0922 f: (617) 248-0902

[www.janedoe.org](http://www.janedoe.org)

A coalition that provides assistance to domestic violence survivors seeking information and referrals. LGBTQ-friendly.



## **Massachusetts Department of Children and Families (DCF)**

600 Washington St, 6th Fl, Boston, MA 02111 p: (617) 748-2000 f: (617) 261-7435

p: (617) 748-2444 (Ombudsman) [www.mass.gov/dcf](http://www.mass.gov/dcf)

Ages: all

The Commonwealth's child protection agency. Provides referrals to domestic violence services. Also offers foster care services, adoption services, programs for adolescents, and health and medical services for children in DCF care

### **Haverhill Area Office**

3 Ferry St, Bradford, MA 01835

p: (978) 469-8800 f: (978) 683-7455

Serves Amesbury, Boxford, Georgetown, Groveland, Haverhill, Ipswich, Merrimac, Newbury, Newburyport, Rowley, Salisbury, Topsfield, and West Newbury

### **Lawrence Area Office**

280 Merrimack St, 2nd Fl, Lawrence, MA 01843 p: (978) 557-2700 f: (978) 557-9231

Serves Andover, Lawrence, Methuen, and North Andover



## **Massachusetts Department of Transitional Assistance (DTA)**

600 Washington St, #4, Boston, MA 02111

Document Processing Ctr: PO Box 4406, Taunton, MA 02780-0420 p: (617) 348-8500

p: (800) 249-2007 (application info hotline M–F 8:45–5) [www.mass.gov/dta](http://www.mass.gov/dta)

Eligibility restrictions: low-income

Ages: all

Provides case consultation, safe housing, options and resources, safety planning, and welfare benefits to domestic violence victims through its domestic violence unit. Also offers food services

### **Lawrence Office**

280 Merrimack St, Lawrence, MA 01843

p: (978) 725-7100 f: (617) 887-8765

Hours: M–F 7–5

Serves Amesbury, Andover, Boxford, Georgetown, Groveland, Haverhill, Methuen, Merrimac, Newbury, Newburyport, North Andover, Rowley, Salisbury, and West Newbury



## **Massachusetts Office for Victim Assistance**

1 Ashburton Place, #1101, Boston, MA 02108

p: (617) 586-1340

[www.mass.gov/mova](http://www.mass.gov/mova)

MOVA works directly with victims of crime and their families.





## **National Domestic Violence Hotline**

p: (800) 656-SAFE (7233)

TTY: (800) 787-3224

Hours: hotline: 24/7

live chat: Su–Sa 8am–3am Spanish live chat: Su–Sa 11–11

National helpline for victims of domestic violence.



## **The Network/La Red**

PO Box 6011, Boston, MA 02114

p: (617) 695-0877 f: (617) 423-5651

hotline: (617) 742-4911 TTY: (617) 227-4911

toll-free: (800) 832-1901 [www.tnlr.org](http://www.tnlr.org)

Provides free services for survivors of partner abuse including hotline, safe home program, advocacy program, community organizing, and education programs for those in the LGBTQ community . All services are in English and Spanish.



## **Northeast Legal Aid-Northeast Justice Center**

p: (978) 458-1465 (intake) [www.northeastlegalaid.org](http://www.northeastlegalaid.org)

Eligibility restrictions: low-income Ages: primarily adults

Provides legal assistance in family law issues for victims of domestic violence. Also offers a range of legal services in matters including housing (pg. 61), immigration (pg. 65), and public benefits .

### **Lawrence Office**

50 Island St, Ste 203A, Lawrence, MA 01840

### **Lowell Office**

35 John St, Ste 302, Lowell, MA 01852



## **Safelink**

(operated by Casa Myrna) p: (877) 785-2020

TTY: (877) 521-2601

e: [info@casamyrna.org](mailto:info@casamyrna.org) [www.casamyrna.org](http://www.casamyrna.org) Hours: 24/7

Multilingual statewide hotline to assist victims of domestic abuse.



## **Supportive Care**

15 Union St, Lawrence, MA 01840

p: (978) 686-1300 f: (978) 687-6606

toll-free: (800) 691-3947 [www.supportivecaredv.org](http://www.supportivecaredv.org) Fees: none

Provides support groups during the day and evening in English and Spanish, counseling, food stamps advocacy, parenting support, legal services referrals, housing advocacy, self-esteem classes, and economic self-sufficiency advocacy for victims of domestic violence.

.....

## YWCA of Greater Lawrence

p: (978) 687-0331 Lawrence, MA

### YWCA Fina House

p: (978) 682-3039 Lawrence, MA

hotline: (877) 509-9922

Spanish: (800) 223-5001

Provides counseling and other supportive services for victims of rape as well as emergency services, referrals to shelters, and other needs for women dealing with domestic violence. Bilingual court advocates available.

.....

## YWCA of Haverhill

p: (978) 374-6121 Haverhill, MA

Provides emergency services with referrals to shelters and other needs for women dealing with domestic violence. Bilingual court advocates are available to assist with restraining or harassment orders and help victims understand their legal rights. Transitional housing and supportive services also available.

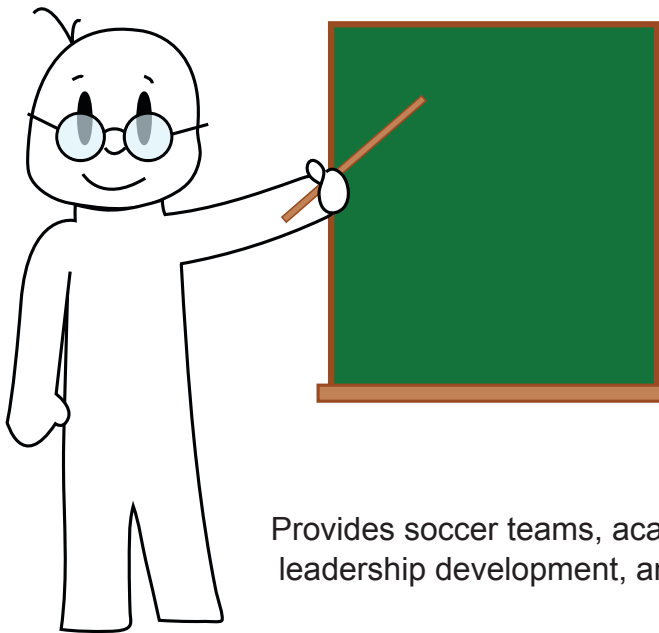
American Student Assistance

p: (877) 332-4348

e: [information@asa.org](mailto:information@asa.org) [www.asa.org](http://www.asa.org)

Helpline answers questions about all aspects of college planning, including financial aid and the application process. Offers free student debt counseling using an online program, SALT.

## Education Services



.....

## American Student Assistance

p: (877) 332-4348

e: [information@asa.org](mailto:information@asa.org) [www.asa.org](http://www.asa.org)

Helpline answers questions about all aspects of college planning, including financial aid and the application process. Offers free student debt counseling using an online program, SALT.

.....

## Beyond Soccer, Inc

p: (978) 681-5050 Lawrence, MA

Provides soccer teams, academic mentoring/tutoring, nutrition education, leadership development, and summer enrichment.

.....

## Boys & Girls Club of Greater Haverhill

p: (978) 374-6171 Haverhill, MA

Provides education and career development services.



## **Boys & Girls Club of Lawrence**

p: (978) 683-2747 Lawrence, MA

Provides after-school homework help and offers guidance and support with transitioning from middle school to high school, and high school to college.



## **Children's Law Center of Massachusetts**

p: (781) 581-1977 Lynn, MA

Provides comprehensive legal services to students in education matters including special education and related issues such as school discipline, exclusion, homelessness, enrollment, and school records. Toll-free helpline provides assistance and guidance.



## **Community Action, Inc (CAI)**

p: (978) 373-1971 Haverhill, MA

Provides HiSET (aka GED) preparation and classes to help improve math, English, and reading skills. Also hosts Head Start and Early Head Start programs.



## **Family Services of the Merrimack Valley**

430 North Canal St, Lawrence, MA 01840 p: (978) 327-6600

e: [info@fsmv.org](mailto:info@fsmv.org) [www.FSMV.org](http://www.FSMV.org)

Through its Stand and Deliver program provides academic mentoring for Lawrence students. Agency also offers foster care services (pg. 49), mental health services , parenting programs , reproductive health services , and youth development programs . Additional locations include:

Families & Youth Initiative

### **Lawrence/Methuen Community Coalition**

130 Parker St, Lawrence, MA 01841

p: (978) 332-8250

Hours: M–Th 8–5; F 8–3

### **Family & Community Resource Center**

530 Broadway St, Lawrence, MA 01841

p: (978) 975-8800

One of the statewide network of Family Resource Centers.



## **Girls Inc of Greater Haverhill**

p: (978) 372-0771 Haverhill, MA

Provides year-round academic enrichment and skill-building programs.



## **Greater Lawrence Community Action Council, Inc (GLCAC)**

p: (978) 681-4900 Lawrence, MA

p: (978) 681-4920 f: (978) 681-4945

Ages: 15 mo–5 yrs Fees: none

Serves Lawrence, Methuen, Andover, and North Andover

Provides Head Start programs and parent education classes.



## **Horizons for Homeless Children**

Northeast Region Office

60 Island St, Lawrence, MA 01840

p: (978) 557-2182 f: (978) 557-2184

[www.horizonsforhomelesschildren.org](http://www.horizonsforhomelesschildren.org)

Provides education services for adults including financial literacy and parenting classes, as well as intervention services for homeless children.



## **Lawrence Early Achievement Partnership (LEAP)**

Family Resource Ctr, 60 Island St, Lawrence, MA 01840 p: (978) 975-5900 f: (978) 687-0756

[www.lawrence.k12.ma.us/leap](http://www.lawrence.k12.ma.us/leap)

Eligibility restrictions: Lawrence residents, low-income Ages: 4 yrs by September 1 in yr of enrollment

In partnership with the Lawrence Public Schools, provides preK program for children entering

Kindergarten the following year. Enrollment at Family Resource Center location.

### **GLCAC**

96 East Haverhill St, Lawrence, MA 01841 p: (978) 258-5980 f: (978) 655-8773

### **The Community Group**

404 Haverhill St, Lawrence, MA 01840

p: (978) 651-2805 f: (978) 651-2807



## **Lawrence Public Schools**

[www.lawrence.k12.ma.us](http://www.lawrence.k12.ma.us)

### **Adult Learning Center**

147 Haverhill St, Lawrence, MA 01841

p: (978) 722-8110

[www.lawrence.k12.ma.us/adult-learning-center](http://www.lawrence.k12.ma.us/adult-learning-center) Hours: M–F 8–4:30; Tu,W,Th 5:45–8:45

Provides HiSET testing and courses in Spanish and English in class and online. ESOL classes also available

### **Family Resource Center**

60 Island St, Lawrence MA 01840

p: (978) 975-5900 f: (978) 687-0756

Offers job training program



## **Let's Get Ready**

89 South St, Ste 401, Boston, MA 02111

p: (617) 366-2643 f: (617) 507-6041

[www.letsgetready.org](http://www.letsgetready.org)

Eligibility restrictions: low-income, Lawrence high school student Ages: grades 11–12 College-age coaches support students by teaching SAT strategies, helping complete the college application process, and working with them to obtain financial aid. Also offers youth development services.



## **Massachusetts Department of Elementary and Secondary Education (DESE)**

p: (781) 338-3700 Malden, MA

TTY: (800) 439-2370

The Program Quality Assurance (PQA) division investigates and resolves complaints from the public that public elementary and secondary schools have violated a law relating to education and provides general information regarding schools' legal obligations for education.



## **Massachusetts Migrant Education Program**

50 Terminal St, Ste 315, Charlestown, MA 02129

p: (978) 657-8331 f: (978) 657-0227

[edcollab.org/programs/mmep/](http://edcollab.org/programs/mmep/)

Eligibility restrictions: children of migrant workers Ages: 3–22 yrs

Provides youths with extended learning opportunities including homework assistance, tutoring, programs for out-of-school youth, and summer programs as well as parent empowerment, family literacy services, advocacy, and referrals to community based organizations. Also offers ESOL services



## **Merrimack Valley Catholic Charities**

70 Lawrence St, Lowell, MA 01852

p: (978) 452-1421

[www.ccab.org/?q=location-merrimack](http://www.ccab.org/?q=location-merrimack)

### **Young Parents Education Program**

10 Kirk St, Lowell, MA 01852

p: (978) 459-2387

Eligibility restrictions: single mothers Provides HiSET preparation classes.

Also offers food services , mental health services , and parent programming

Offices include:

### **Family Support Services**

530 Broadway St, 3rd Fl, Lawrence, MA 01842 p: (978) 452-1421

### **Haverhill**

191 Merrimack St, Ste 302, Haverhill, MA 01830

p: (978) 521-6265



## **Methuen Adult Learning Center**

Currier School, 36 Boylston St, Methuen, MA 01844 p: (978) 681-1347

[ww2.methuen.k12.ma.us/currier.shtml](http://ww2.methuen.k12.ma.us/currier.shtml) Ages: adult

The ABE Program provides HiSET courses. Also offers ESOL services (pg. 38).



## **Methuen Arlington Neighborhood, Inc**

p: (978) 691-5645 Methuen, MA

Provides the Homework Help Center.



## **Northern Essex Community College**

360 Merrimack St, Bldg 9, Entry K, Lawrence, MA 01834 p: (978) 659-1272 or (978) 659-1284

[www.necc.mass.edu/academics/prep/adult-literacy/programs-offered/transition-programs](http://www.necc.mass.edu/academics/prep/adult-literacy/programs-offered/transition-programs)

Eligibility restrictions: HiSET (aka GED) or graduated high school Ages: all The ABE Transition to College Program offers career exploration, college study skills, computer skills, math, reading and writing review, internet research skills, and help with college admissions and financial aid.



## **Notre Dame Education Center**

354 Merrimack St, Ste 210, Lawrence, MA 01843

p: (978) 682-6441 ext 201 f: (978) 974-9840

[www.ndeclawrence.net](http://www.ndeclawrence.net)

Ages: adult Provides nursing assistant program and HiSET. Also offers ESOL services and immigration services



## **Salem State University**

Lawrence High School, Rm G110

70-71 North Parish Rd, Lawrence, MA 01840 p: (978) 722-8499

[www.salemstate.edu/upwardbound](http://www.salemstate.edu/upwardbound)

Eligibility restrictions: low-income and/or first-generation college-bound students

Ages: 13–19 yrs Through the Upward Bound program provides academic instruction, tutoring, and enrichment activities throughout the school year and during a six-week summer program. An individualized academic plan is developed for each student. Each “Plan for Success” is designed to improve students’ basic academic skills.

Also offers community service and mentoring.



## **Si, Se Puede, Inc**

p: (978) 685-4074 Lawrence, MA

Provides after-school program for older youth with homework assistance and college preparation help.



## **U.S. Department of Education (DOE)**

p: (617) 289-0111 Boston, MA

The Office for Civil Rights is the division of the federal education agency that investigates and resolves discrimination complaints filed against educational institutions in order to ensure equal access to education for all. Also provides free information and training on federal civil rights laws relating to education.



## **Youth Development Organization (YDO)**

p: (978) 688-4300 Lawrence, MA

Provides individualized after-school and summer enrichment and academic programs to low to moderate income youth.

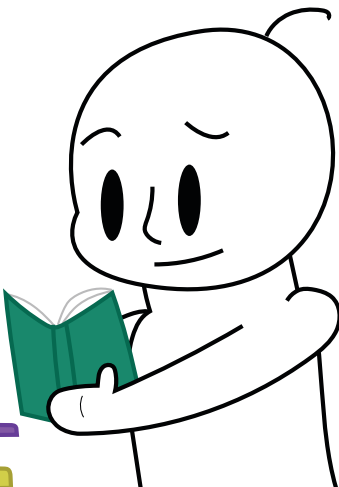


•••••  
**YWCA of Greater Lawrence**

p: (978) 687-0331 Lawrence, MA

Ages: 1 mo–5 yrs Offers an early learning center with a literacy based curriculum and uses community resources including the public library, parks, and play spaces to offer children a well-rounded, experiential program.

**English for Speakers of Other Languages (ESOL) Services**



•••••  
**Center for Bilingual Services**

60 Island St, Unit 100, Lawrence, MA 01840

p: (978) 397-2410

[www.centerforbilingualservices.com](http://www.centerforbilingualservices.com) Ages: all

Provides ESOL for adult learners of all levels as well as assists school aged students. Also offers homework help, test preparation, and job preparation. Hours are set by appointment only. Also offers immigration services

•••••  
**Community Action, Inc (CAI)**

p: (978) 373-1971 Haverhill, MA

Ages: adult Fees: none

Provides ESOL classes and English for Work classes 2–3 days &/or evenings per week. Class days depend on class placement. Registration and placement test required.

•••••  
**Greater Lawrence Community Action Council, Inc**

**(GLCAC)**

p: (978) 681-4900 Lawrence, MA

p: (978) 620-4729 (ESOL services)

Ages: 18+ yrs Provides morning and evening classes as part of its adult ESOL literacy program.

•••••  
**Lawrence CommunityWorks**

p: (978) 685-3115 Lawrence, MA

Ages: adults Provides ESOL classes on a semester schedule to work on listening, speaking, and pronunciation skills.

•••••  
**Lawrence Family Development, Inc**

34 West St, Lawrence, MA 01841

p: (978) 689-9863 f: (978) 689-8133

[www.lfdef.org](http://www.lfdef.org)

Provides ESOL classes and adult education for newcomers and immigrants. Also offers immigration services (pg. 64) and youth development services



## **Lawrence Public Schools**

www.lawrence.k12.ma.us

Adult Learning Center

p: (978) 722-8110 Lawrence, MA

Provides ESOL classes.



## **Lazarus House Ministries**

412 Hampshire St, Lawrence, MA 01842

p: (978) 689-8575 f: (978) 682-7004

www.lazarushouse.org

Provides joint ESOL/cleaning job training program. Participants receive 10 hrs/wk of ESOL, 30 hrs/wk of work. Participants are paid an hourly wage. Also offers food services and housing services .



## **Massachusetts Migrant Education Program**

p: (978) 657-8331 Charlestown, MA

Provides supplemental educational opportunities to out of school youth and the children of migratory workers.



## **Merrimack Immigrant and Education Center**

439 South Union St, Lawrence, MA 01843 p: (978) 683-7316 f: (978) 683-9075

www.asiancentermv.org

Ages: adult

Provides ESOL classes that meet September through January and February through June. Also offers immigration services (pg. 65).



## **Methuen Adult Learning Center**

p: (978) 681-1347 Methuen, MA

Provides adult education with three levels of ESOL classes. Also offers Career Pathways classes for students seeking a job while improving their English language skills and distance learning for ESOL students who want to learn outside of a traditional classroom.



## **Middlesex Community College**

33 Kearney Sq, Lowell, MA 01852

p: (978) 656-3267

p: (978) 656-3104 (ELLI)

e: [cunham@middlesex.mass.edu](mailto:cunham@middlesex.mass.edu) [www.middlesex.mass.edu/internationalstudents/pac.aspx](http://www.middlesex.mass.edu/internationalstudents/pac.aspx) Ages: HS graduate or 16+ yrs

The English Language Learner Institute provides various non- credit day and evening classes that teach basic skills essential to American culture such as English and technology, life, and social skills. The Prepare to Attend College (PAC) program offers pre- college classes in the fall, spring, and summer.





## **Among Friends**

St. Paul's Church, 166 High St, Newburyport, MA 01950 p: (978) 465-5351  
[www.stpauls-nbpt.org/outreach/among-friends](http://www.stpauls-nbpt.org/outreach/among-friends) Hours: M 5; Tu,F 11  
Provides meals at designated times. Open to all.



## **Bread & Roses**

58 Newbury St, Ste 401, Lawrence, MA 01840  
p: (978) 681-8768

[www.breadandroseslawrence.org](http://www.breadandroseslawrence.org) Hours: M–Th 9-5; Sa 5–7

Provides a full-course nutritious dinner for anyone who is hungry or in need. Also provides emergency food on a case-by-case basis. Referral is required from a local service organization for emergency food. Also offers limited medical services and assists low income families with obtaining homeownership .



## **Calvary Baptist Church**

13 Ashland St, Haverhill, MA p: (978) 373-6466

[www.calvarybaptist-haverhill.org](http://www.calvarybaptist-haverhill.org) Hours: F 6–8; 2nd & 4th Sa 4

Operates food pantry every Friday. Also serves hot meals every 2nd and 4th Saturday of the month. ID required.



## **Catholic Charities North**

[www.ccab.org/?q=location-north-boston](http://www.ccab.org/?q=location-north-boston)

### **Family Counseling and Guidance Center**

152 Sylvan St, Danvers, MA 01923

p: (978) 774-6820



## **Changing Lives Christian Church**

17 Newcomb St, Haverhill, MA 01830

p: (978) 373-7373

e: [info@changingliveschristianchurch.com](mailto:info@changingliveschristianchurch.com) [www.changingliveschristianchurch.com/food\\_pantry.htm](http://www.changingliveschristianchurch.com/food_pantry.htm)

Hours: Su 10–11 Operates a food pantry.



## **Common Ground Ministries Inc**

6 Birchwood Terrace, Groveland, MA 01834

p: (978) 372-3336 f: (978) 372-3055

e: [contact@commongroundne.org](mailto:contact@commongroundne.org) [www.commongroundne.org](http://www.commongroundne.org)

Eligibility restrictions: residents of the Acre neighborhood Hours: last Th 9:30–5:30;

M–F 12:30–4:30 on emergency basis. Operates a food pantry.



## **Community Action, Inc (CAI)**

p: (978) 373-1971 Haverhill, MA

Eligibility restrictions: residents of Haverhill, Boxford, Groveland,

Georgetown and Rowley Emergency food program for those in immediate need.



## **Cor Unum Meal Center**

191 Salem St, Lawrence, MA 01843

p: (978) 688-8900

e: [corunum2@comcast.net](mailto:corunum2@comcast.net) [www.corunummealcenter.org](http://www.corunummealcenter.org)

Hours: breakfast 6–8; dinner 4:30–6:30

Provides free, nutritious meals to anyone in need.

### **Essex County Hunger Relief**

[www.essexcountyhungerrelief.org](http://www.essexcountyhungerrelief.org)

Website with database of food resources searchable by town.



## **Essex County Hunger Relief**

[www.essexcountyhungerrelief.org](http://www.essexcountyhungerrelief.org)

Website with database of food resources searchable by town.



## **First Church Congregational Food Pantry**

4 Georgetown Rd, Boxford, MA 01921

p: (978) 887-5841

e: [office@firstchurchboxford.org](mailto:office@firstchurchboxford.org) [www.firstchurchboxford.org/food-pantry](http://www.firstchurchboxford.org/food-pantry) Eligibility restrictions: Tri-town residents. Food Pantry volunteer staff interview recipients and set up times for food pickup as well as household needs and personal products.



## **First Congregational Church of Georgetown's The Pantry**

7 Andover St, Georgetown, MA 01833

p: (978) 352-8443

[www.georgetowncongregational.org](http://www.georgetowncongregational.org) Hours: M,Th 9:30–12 Provides services to individuals and families in Georgetown and surrounding areas, including Boxford.



## **Food for the World**

516 Essex St, Lawrence, MA 01841

p: (978) 683-9949

[www.foodfortheworld.org/pantry.html](http://www.foodfortheworld.org/pantry.html) Eligibility restrictions: low-moderate income

Food pantry offers one bag of groceries every week. Provides free food to families, the homeless, the indigent, especially children and the elderly, at the following sites and times:

516 Essex St, Lawrence, MA 01840

Hours: W 9–11

774 Essex St, Lawrence, MA 01841 Hours: 1st Sa 10–11

46-48 Fitz St, Lawrence, MA 01840 Hours: 1st & 3rd M 10–11

201 Haverhill St, Lawrence, MA 01841

Hours: alternate Su 1:30–2:30 (except holidays)

8 North St, Salem, MA 01970 Hours: Sa 10–12 (except 1st Sa)

15 Parker St, Lawrence, MA 01843 Hours: last Sa 12–1



## **The Joyful Ladle**

Trinity Episcopal Church, 26 White St, Haverhill, MA 01830 p: (978) 372-4244  
[www.trinityhaverhill.org/mission/the-joyful-ladle.html](http://www.trinityhaverhill.org/mission/the-joyful-ladle.html) Hours: W 11:30–1:30  
Provides free hot soup and sandwiches to the hungry, homeless, and unemployed.



## **Lazarus House Ministries**

p: (978) 689-8575

### **Soup Kitchen**

412 Hampshire St, Lawrence, MA 01841 Continental breakfast: April-Oct, M–F 8–9:30

Nov-March M–Su 8:30–9:30

Noon-time meal: 11:30–1

Soup van: Jan, Feb, & Mar, F & Su nights

### **Food Pantry**

242 Hampshire St, Lawrence, MA 01841

Hours: W 9–2

### **Bagged Meals**

48 Holly St, Lawrence, MA 01841

Hours: M–F 9–11



## **Massachusetts Department of Transitional**

### **Assistance (DTA)**

p: (617) 348-8500 Boston, MA

See page 28

p: (800) 249-2007 (application info hotline M–F 8:45–5)

toll-free: (866) 950-FOOD (3663)

Provides families with cash and food assistance, including through the Supplemental Nutrition Assistance Program (SNAP).

### **Lawrence Office**

p: (978) 725-7100 Lawrence, MA

### **North Shore Office**

p: (978) 825-7300 Salem, MA



## **Merrimac Mobile Food Pantry**

Merrimac Senior Center, 100 East Main St, Merrimac, MA 01860 p: (978) 346-9549

[www.merrimac01860.info](http://www.merrimac01860.info)

Eligibility restrictions: senior unable to transport him/herself Wednesday delivery service.



## **Merrimack Valley Catholic Charities**

p: (978) 452-1421 Lowell, MA

p: (978) 454-9946 (food pantry)

Provides food pantry and help with basic needs.

Haverhill

p: (978) 521-6265

Offers assistance with basic needs.



●●●●●●●●●●●●●●●●

## **Neighbors in Need**

276 Essex St, Lawrence, MA 01841  
p: (978) 685-8321 f: (978) 689-2006  
www.neighborsinneed.net

Hours: M–F 8:30–12 for diapers, baby food, formula, and clothing Provides food at the following locations at the following times:

### **South Congregational Church**

#### **Iglesia Adventista del Septimo Dia Jerusalem**

198 South Broadway, Lawrence, MA Hours: Tu 8:30

#### **Christ United Methodist Church**

207 Haverhill St, Lawrence, MA Hours: Tu 10

#### **Ministerio Apostolico Jesucristo es el Senor**

96 East Haverhill St, Lawrence, MA Hours: W 9

#### **Methuen Arlington Neighborhood**

141 Tenney St, Methuen, MA Hours: W 10

#### **Iglesia Adventista Del Septimo Dia**

279 South Union St, Lawrence, MA Hours: Th 8:30

#### **Boys and Girls Club**

136 Water St, Lawrence, MA Hours: Th 10

#### **Third Baptist Church**

22 Warren St, Lawrence, MA Hours: F 8:30

●●●●●●●●●●●●●●●●

## **Open Hand Pantry**

Unitarian Church, 16 Ashland St, Haverhill, MA 01830 p: (978) 372-0260  
www.stjamesandjohnhaverhill.org

Eligibility restrictions: proof of residency of Haverhill Hours: Tu 2–7

●●●●●●●●●●●●●●●●

## **Open Hearts Ministries, Inc**

First Baptist Church, 217 Main St, Haverhill, MA 01830 p: (978) 374-7491

e: admin@openheartsministries.org www.openheartsministries.org Hours: community meal: Su 2–4  
senior meal: 4th W 12–1 meal deliveries: W 10–12

●●●●●●●●●●●●●●●●

## **Our Neighbor's Table**

PO Box 592, Amesbury, MA 01913

p: (978) 388-1907

p: (978) 835-3016 (emergency hotline) www.ourneighborstable.org

Summer Lunch Program provides pre-packed bag lunches for families with school-aged children during July and August. Pre- registration required by June. Emergency Bags program offers bags of personal care products and emergency food to those who are homeless, living in motels, or displaced due to natural disasters.

### **Wednesday Dinner**

Vestry Hall of Main Street Congregational Church 145 Main St, Amesbury, MA 01913

Hours: W 4–6

### **Food Pantry**

Jardis-Taylor Center, 194 Main St, Amesbury, MA Hours: Th 3–6; F 9–12; Sa 9–12

Offers baby food and diapers, fresh dairy, meat, and produce at locations and times listed. Amesbury residents may go to pantry once a week. Boxford, Georgetown, Groveland, Merrimac, Newbury, Newburyport, Rowley, Salisbury, and West Newbury residents may go the 2nd and last week of the month.

### **Merrimac Senior Center**

100 East Main St, Merrimac, MA

Eligibility restrictions: residents of Merrimac only Hours: 1st & 3rd Sa 9:30–10:30



### **The People's Pantry**

North Parish Church, 190 Academy Rd, North Andover, MA 08145 p: (978) 687-7948

e: office@northparish.org www.northparish.org

Hours: alternate Tu 9:30–11

Guests are given the opportunity to shop for 1 week's worth of groceries. Supervision, snacks, and activities are provided to preschoolers who accompany their parents.



### **Project Bread Food Source Hotline**

p: (800) 645-8333

www.projectbread.org/get-help/foodsource-hotline.html Hours: M–F 8–7; Sa 10–2

Hotline to refer callers to emergency food resources in their community. 60+ languages.



### **Sacred Hearts Food Pantry**

8 Carleton Avenue, Haverhill, MA 01835

p: (978) 373-1281

e: pconte@sacredheartparish.com Hours: M,W,F 8:30–11:15

Groveland and Haverhill residents can come every week, all others every other week. Proof of ID and residence required. Need ID for children as well.



### **Salvation Army [www.SalvationArmyMA.org](http://www.SalvationArmyMA.org)**

Haverhill

p: (978) 374-7571

Hours: M,W,F 9:30–11 (food pantry) Tu,Th,F 12–1 (soup kitchen)

Lawrence

p: (978) 682-8038

Eligibility restrictions: by appointment, proof of need Hours: M–Th 9–4; F 9–12

Provides food bank services only. Callers are assigned one day per month to pick up food. Following the initial appointment, no others are needed.

### **Newburyport**

p: (978) 465-0883

Hours: SA Café: W 1

Friendship Table: F 5

Offers free meals to the community twice a week.



## **Somebody Cares New England**

358 Washington St, Haverhill, MA 01832

p: (978) 912-7626

e: [office@somebodycaresNE.org](mailto:office@somebodycaresNE.org) [www.somebodycaresne.org](http://www.somebodycaresne.org)

Eligibility restrictions: proof of Haverhill residency Hours: last Th 1–4

Food pantry. Also offers Community Dinners and mobile food pantry. Call for details.



## **Top Cupboard Food Pantry**

Trinity Episcopal Church, 124 River Rd, Topsfield, MA 01983 p: (978) 887-5570

Eligibility restrictions: proof of Topsfield residency Hours: 2nd & 4th Sa 8–10

Provides stock items and some local produce during the summer.



## **Universalist Unitarian Church**

16 Ashland St, Haverhill, MA 01830

p: (978) 372-5173

[www.uuhaverhill.org](http://www.uuhaverhill.org)

Hours: 1st & 3rd Sa starting at 2:30

Provides community meal to anyone in need.



## **Women, Infants and Children (WIC)**

[www.wicprograms.org/state/massachusetts](http://www.wicprograms.org/state/massachusetts)

Eligibility restrictions: low-income women with children up to age 5 Ages: all Fees: none

Provides supplemental food and nutrition information to low-income pregnant, breastfeeding, and postpartum women.

### **WIC – Amesbury**

44 Friend St, Amesbury, MA 01913

p: (978) 388-2575

### **WIC – Andover**

Greater Lawrence Community Action Council, Inc (GLCAC) 165 Haverhill St, Andover, MA 01810

p: (978) 681-4968

### **WIC – Beverly**

4 Ocean St, Beverly, MA 01915

p: (978) 922-2110

### **WIC – Methuen**

Greater Lawrence Community Action Council, Inc (GLCAC) 141 Tenney St, Methuen, MA 01844

p: (978) 681-4963

### **WIC – Lawrence**

Greater Lawrence Community Action Council, Inc (GLCAC) 305 Essex St, 2nd Fl, Lawrence, MA 01840

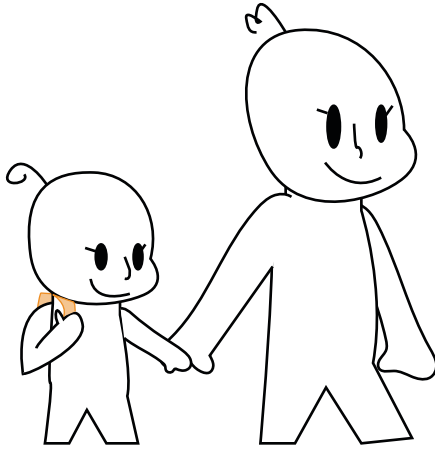
p: (978) 681-4960

### **WIC – Northern Essex**

Community Action, Inc

10 Phoenix Row, 3rd Fl, Haverhill, MA 01830 p: (978) 374-2191

# Foster Care and Adoption Services



## Adoption Journeys Merrimack Valley

439 South Union St, Ste 203B, Lawrence, MA 01843 p: (978) 687-5852 f: (978) 687-5857

[www.child-familyservices.org/lawrence](http://www.child-familyservices.org/lawrence)

Through Child & Family Services, acts as a statewide resource that offers post-adoption support through joint problem-solving, advocacy, coordination of services, home-based counseling, support groups, parent and young adult peer mentorship from someone who has experienced adoption, and respite care. Also offers parenting programs (pg. 86)

## The ANSWER BOOK

[www.mass.gov/courts/programs/cip](http://www.mass.gov/courts/programs/cip)

A guide for adolescents and young adults involved with the Department of Children and Families. For a hard copy, contact the Children’s Law Center at (781) 581-1977.

## Child at Risk Hotline (DCF 24 Hour Hotline)

toll-free: (800) 792-5200

Provides after-hours urgent assistance for children in foster care.

## Children’s Law Center of MA

p: (781) 581-1977 Lynn, MA

Certified to accept court assigned cases in care and protection matters, represents and advocates for children in custody, visitation, and guardianship issues as well as before DCF and other state agencies on matters affecting children’s well-being and safety.

## Committee for Public Counsel Services (CPCS) Children & Family Law Program (CAFL)

44 Bromfield St, Boston, MA 02108

p: (617) 482-6212 f: (617) 988-8455

[www.publiccounsel.net/cafl](http://www.publiccounsel.net/cafl)

Eligibility restrictions: low-income, by court appointment only Ages: all

Part of CPCS’s statewide program that provides lawyers to children, young adults, and low-income parents in child welfare (Care & Protection, CRA, and PYA) cases. Attorneys are appointed by the court (pg. 68). The Boston office can help parents, children, and young adults get in contact with their court-appointed attorneys.

### **Lowell Office**

27 Prescott St, 2nd Fl, Lowell, MA 01852

p: (978) 446-3917 f: (978) 458-3049

[www.publiccounsel.net/dir/lowell-cafl](http://www.publiccounsel.net/dir/lowell-cafl)

Serves Lawrence and Lowell Juvenile Courts.



### **Family Services of the Merrimack Valley**

p: (978) 327-6600 Lawrence, MA

e: [frobinson@fsmv.org](mailto:frobinson@fsmv.org) [www.fsmv.org/child-advocacy](http://www.fsmv.org/child-advocacy)

Through its Court Appointed Special Advocates (CASA) program, youth and families may request that the court appoint a volunteer to work with the court and DCF to ensure a youth in DCF custody gets all necessary services. CASA volunteers also inform the judge of updates and make recommendations.



### **Foster Kids of the Merrimack Valley, Inc**

PO Box 2166, Methuen, MA 01844

p: (978) 771-2150

e: [giordanoeileen@gmail.com](mailto:giordanoeileen@gmail.com) [www.fosterkidsmv.org](http://www.fosterkidsmv.org)

Eligibility restrictions: low-income Ages: all Provides financial assistance, school supplies, scholarships, and other resources to youth currently in DCF foster care.

The Adoption Resources Program provides support and counseling before, during, and after placement of child as well as information on various types of adoptions and helps families choose the level of openness in their adoptions. Agency also offers mental health services (pg. 79) and a visiting moms program (pg. 88).

#### **North Shore Office**

175 Andover St, Ste 203, Danvers, MA 01923

p: (978) 741-7878



### **Massachusetts Adoption Resource Exchange (MARE)**

45 Franklin St, 5th Fl, Boston, MA 02110 p: (617) 542-3678 ext 116

[www.mareinc.org](http://www.mareinc.org)

MARE is a mentor program for adoptive families that aims to find permanent homes for children waiting in foster homes.



### **Massachusetts Department of Children and Families (DCF)**

p: (617) 748-2000 Boston, MA

p: (617) 748-2444 (Ombudsman)

As the state's child protection agency, DCF offers foster care and adoption services, programs for adolescents, and health and medical services for children in state custody. The Office of the Ombudsman responds to inquiries on issues of clients, foster and adoptive parents, and concerned citizens, and mediates and resolves disputes as possible.

#### **Haverhill Area Office**

p: (978) 469-8800

#### **Lawrence Area Office**

p: (978) 557-2500

## Massachusetts Network of Foster Care Alumni

Judge Baker Children's Ctr, 53 Parker Hill Ave, Boston, MA 02120 p: (877) 624-3440

[www.massnfca.org](http://www.massnfca.org)

Eligibility restrictions: formerly in foster care

A state-affiliated group that works on behalf of foster care alumni. Provides support and resources, especially for alumni in transition. Promotes community for alumni through partnerships with DCF youth advisory boards and special events.

Massachusetts Society for the Prevention of Cruelty to Children (MSPCC)

## [www.mspcc.org](http://www.mspcc.org)

Ages: all

Provides services for families looking to adopt or foster children. Includes post-adoption support, home study, training, and home visits. Also offers mental health services and parenting programs (pg. 89).

### **Lawrence**

439 South Union St, Lawrence, MA 01843 p: (978) 682-9222 f: (978) 681-9534

### **Lowell**

126 Phoenix Ave, Lowell, MA 01852

p: (978) 937-3087 f: (978) 937-8695

## Health Services

### Bread & Roses

p: (978) 681-8768 Lawrence, MA

Hours: W 5-7

Doctor/nurse consultations available. Free and private HIV screenings. No insurance required.

### Children's Health Care

[www.chcmass.com](http://www.chcmass.com)

Pediatric services for all children throughout Merrimack Valley.

Haverhill

2 Water St, Haverhill, MA 01830

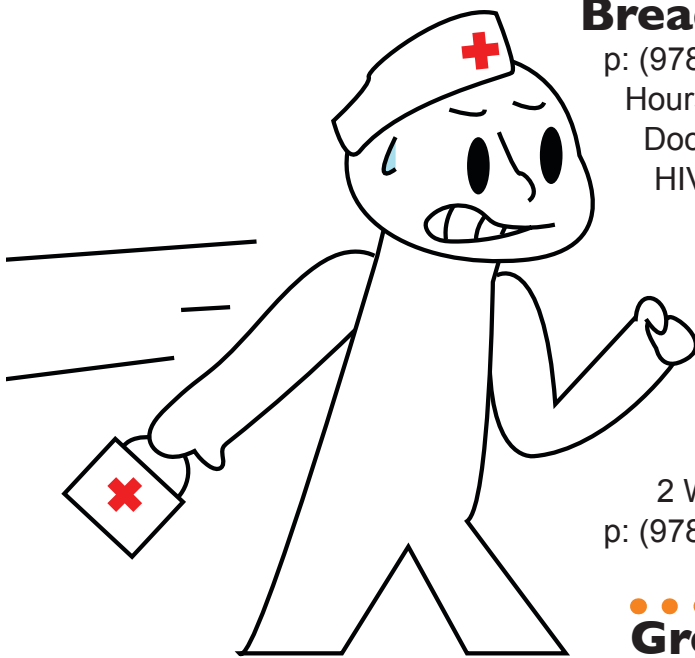
p: (978) 373-6557 f: (978) 374-5096

### Greater Lawrence Family Health Center

One Griffin Brook Drive, Methuen, MA 01844 p: (978) 725-7400

p: (978) 686-0090 (appointment scheduling) [www.glfhc.org](http://www.glfhc.org)

Provides primary health care for individuals and families in the Greater Lawrence Area. Family pharmacies located at Main Site, North Site, South Site, West Site, and Methuen Family Center.



### **CSS Prevention and Education**

98-100 Water St, Lawrence, MA 01841

### **Lawrence General Hospital Site**

1 General St, Lamprey Bldg, 4th Fl, Lawrence, MA 01841 p: (978) 983-0488

Hours: M–F 8:30–5

### **Main Site**

34 Haverhill St, Lawrence MA 01841

p: (978) 686-0090

Hours: M–Th 8–8:30; F 9–8:30; Sa–Su & Holidays 9–5

### **Methuen Family Health Center**

147 Pelham St, Methuen, MA 01844

p: (978) 683-3491

Hours: M–F 8:30–6

### **North Site**

150 Park St, Lawrence, MA 01841

p: (978) 685-1170

Hours: M, W 8–4:30; Tu, Th 8–8:30, F 9–4:30

### **South Site**

73D Winthrop Ave, Lawrence, MA 01841 p: (978) 686-3017

Hours: M 8–7, Tu–Th 8:30–5, F 9–4:30

### **West Site**

700 Essex St, Lawrence, MA 01841

p: (978) 689-2400

Hours: M 8–8:30, Tu–Th 8–4:30, F 9–4:30



## **Holy Family Hospital**

[www.holyfamily-hospital.org](http://www.holyfamily-hospital.org)

Full service, acute care hospital with two campuses. Also provides substance abuse services (pg. 94).

### **Haverhill**

140 Lincoln Ave, Haverhill, MA 01830

p: (978) 374-2000 p: (978) 521-8121 (scheduling)

### **Methuen**

70 East St, Methuen, MA 01844

p: (978) 687-0151 p: (978) 687-0156

e: [hfh.mail@steward.org](mailto:hfh.mail@steward.org)



## **Lawrence General Hospital**

1 General St, Lawrence, MA 01842

p: (978) 683-4000

[www.lawrencegeneral.org](http://www.lawrencegeneral.org)



## **Massachusetts Department of Public Health (DPH)**

250 Washington St, Boston, MA 02109

p: (617) 624-6000 TTY: (617) 624-6001

p: (800) 882-1435 (Community Support Line) [www.mass.gov/dph](http://www.mass.gov/dph)

Ages: all



Government health agency coordinating health services statewide. Community Support Line informs families with children with special health needs about public programs and benefits they may be eligible for, and about the state and community-based resources that may provide assistance. DPH also provides substance abuse services through the below Bureau (pg. 96).

**Bureau of Substance Abuse Services (BSAS)**

p: (617) 624-5111 TTY: (888) 448-8321

[www.mass.gov/dph/bsas](http://www.mass.gov/dph/bsas)



**Massachusetts Healthy Start**

p: (888) 488-9161

[www.massresources.org/healthy-start.html](http://www.massresources.org/healthy-start.html)

Eligibility restrictions: pregnant, MA resident, not eligible for MassHealth (except MassHealth Limited), and low-income

Hours: 8:30–5

Provides free insurance that covers prenatal care, two months of postpartum care, counseling, and referrals



**Merrimack Medical & Walk-In Center**

25 Marston St, Lawrence, MA 01841

p: (978) 688-3100

[www.mmwic.com](http://www.mmwic.com)

Hours: M–F 8:30–6, Sa 9–3, Su 10–3

Urgent care, walk in seven days a week, and X-ray, lab, EKG, and pharmacy on-site.



**Merrimack Valley Health Services**

600 Federal St, Andover, MA 01810

p: (888) 684-7674

[www.mvhs.org](http://www.mvhs.org)

Provides diagnostic imaging.



**Minute Clinic – CVS**

p: (866) 389-2727

[www.minuteclinic.com](http://www.minuteclinic.com)

Ages: all Hours: M–F 8–7; Sa 9–5:30; Su 10–5:30

Walk-in health care clinic located inside a CVS store. Patients can see a nurse practitioner or physician’s assistant without an appointment.

**Andover**

68 Main St, Andover, MA 01810



**Pentucket Medical Associates (PMA)**

p: (888) 227-3762

[www.pmaonline.com](http://www.pmaonline.com)

Multi-specialty medical group with pediatric and adult care.

**Pentucket Medical Andover**

323 Lowell St, Andover, MA 01810

p: (978) 785-5000

Hours: vary depending on department

#### **Pentucket Medical Haverhill**

1 Park Way, Haverhill, MA 01830

p: (978) 521-3200

Hours: vary depending on department

#### **Pentucket Medical RiverWalk**

500 Merrimack St, Lawrence, MA 01843

p: (978) 557-8900

Hours: M-F 8-5



### **School-Based Health Centers**

Teen health centers located in the school provide an array of health services. Also offering mental health services

#### **Greater Lawrence Family Health Center**

Hours: M-F 8-4:30 year round except during school breaks

Provides school/sports physicals, immunizations, emergency and non-emergency visits, health education, and counseling.

#### **Greater Lawrence Technical School**

57 River Rd, Andover, MA 01810

p: (978) 686-8521

#### **Lawrence High School**

70-71 North Parish Rd, Lawrence, MA 01841 p: (978) 722-8391 f: (978) 722-8511



### **Women, Infants and Children (WIC)**

[www.wicprograms.org/state/massachusetts](http://www.wicprograms.org/state/massachusetts)

#### **WIC – Amesbury**

p: (978) 388-2575

#### **WIC – Andover**

p: (978) 681-4968

#### **WIC – Beverly**

p: (978) 922-2110

#### **WIC – Methuen**

p: (978) 681-4963

#### **WIC – Lawrence**

p: (978) 681-4960

#### **WIC – Northern Essex**

p: (978) 374-2191 Haverhill, MA



### **YWCA of Greater Lawrence**

p: (978) 687-0331 Lawrence, MA

The Women Health Advocacy Services (WHAS) program helps women access health care. WHAS staff are bilingual and provide education about health services.





## **Family Promise North Shore Boston**

330 Rantoul St, Beverly, MA 01915

p: (978) 922-0787

[www.familypromisensb.org](http://www.familypromisensb.org)

Eligibility restrictions: must have a dependent child under 18 yrs Hours:

Nonprofit interfaith hospitality network that provides temporary shelter, including meals, hospitality, and case management, for families experiencing homelessness on the North Shore.



## **Greater Lawrence Community Action Council, Inc (GLCAC)**

p: (978) 681-4900 Lawrence, MA

p: (978) 681-4950 (LIHEAP Program)

e: [liheap@glcac.org](mailto:liheap@glcac.org)

Eligibility restrictions: low-income individuals and families



## **The Low Income Home Energy Assistance (LIHEAP)**

Program assists with the cost of heating their homes during the winter season. Also provides assistance to find housing.



## **Housing Authorities**

Promotes and provides adequate and affordable housing, economic opportunity, and a suitable living environment. Provides subsidized housing or assistance with rent payments to low-income families and elderly citizens. For a full list of Housing Authorities, visit [www.mass.gov/dhcd/local-housing-authority-listing.html](http://www.mass.gov/dhcd/local-housing-authority-listing.html)

### **Amesbury Housing Authority**

180 Main St, Amesbury, MA 01913

p: (978) 388-2022

[www.amesburyma.gov/amesbury-housing-authority](http://www.amesburyma.gov/amesbury-housing-authority)

### **Andover Housing Authority**

100 Morton St, Andover, MA 01810

p: (978) 475-2365

[www.andoverma.gov/298/Andover-Housing-Authority](http://www.andoverma.gov/298/Andover-Housing-Authority)

### **Boxford Housing Authority**

7A Spofford Rd, Boxford MA 01921 p: (978) 887-6000 ext 202

### **Georgetown Housing Authority**

23 Trestle Way, Georgetown, MA 01833

p: (978) 352-6331

[www.georgetownma.gov](http://www.georgetownma.gov)

### **Groveland Housing Authority**

10 River Pines Dr, Groveland, MA 01834 p: (978) 374-0370

[grovelandha.org/default.aspx](http://grovelandha.org/default.aspx)

### **Haverhill Housing Authority**

25 Washington Square, #C, Haverhill, MA 01830 p: (978) 372-6761

### **Lawrence Housing Authority**

353 Elm St, Lawrence, MA 01841

p: (978) 685-3811 f: (978) 685-5335

[www.cityoflawrence.com/housing-authority.aspx](http://www.cityoflawrence.com/housing-authority.aspx) Hours: M–F 9–5

### **Merrimac Housing Authority**

52 Merrimac Village, Merrimac, MA 01860

p: (978) 346-8231

### **Methuen Housing Authority**

24 Mystic St, Methuen, MA 01844

p: (978) 682-8607 f: (978) 794-3534

[www.methuenhousing.org](http://www.methuenhousing.org)

### **North Andover Housing Authority (RHA)**

One Morakeski Meadows, North Andover, MA 01845 p: (978) 682-3932 f: (978) 794-1142

[www.northandoverha.org](http://www.northandoverha.org)

### **Salisbury Housing Authority**

23 Beach Rd, Salisbury, MA 01952

p: (978) 462-8600 f: (978) 463-3512

[www.salisburyhousing.org/](http://www.salisburyhousing.org/) Hours: M–Th 9–3



## **Lawrence CommunityWorks**

p: (978) 685-3115 Lawrence, MA

Hours: M–F 10–6

Provides support and training to support homeownership including financial literacy, mortgage readiness, anti-predatory lending education, and consumer protection.



## **Lazarus House Ministries**

p: (978) 689-8575 Lawrence, MA

Emergency shelter, transitional housing, and housing for homeless individuals and families. Also offers educational and vocational training and support to transition out of homelessness.



## **Lowell Transitional Living Center, Inc**

193 Middlesex St, Lowell, MA 01852

p: (978) 458-9888 f: (978) 452-2186

[www.ltlc.org](http://www.ltlc.org) Ages: 18+ yrs

Provides temporary shelter, housing and job referrals, transportation to detox, case management, education, and post-shelter transition services.



## **Massachusetts Coalition for the Homeless**

73 Buffum St, Lynn, MA 01902

p: (781) 595-7570 f: (781) 595-7574

[www.mahomeless.org](http://www.mahomeless.org)

Eligibility restrictions: low-income Ages: all Provides services to homeless individuals and families. Also runs the Bed for Every Child Program that provides beds to low-income families. Contact the child's school social worker for more information. Services include free homelessness prevention and housing search assistance, and landlord-tenant mediation.



## **Massachusetts Department of Housing and Community**

### **Development (DHCD)**

100 Cambridge St, Ste 300, Boston, MA 02114

p: (617) 573-1100 TTY: (617) 573-1140

p: (800) 632-8175 (cold relief helpline) [www.mass.gov/dhcd](http://www.mass.gov/dhcd)

Provides resources for low- and moderate-income housing. For emergency housing, individuals can call the central number or walk in to the local DTA offices (listed below). Also operates a cold relief helpline which provides financial assistance for heat.

#### **Lawrence Office**

280 Merrimack St, Lawrence, MA 01843

p: (978) 725-7100 f: (617) 887-8765

Serves Amesbury, Andover, Boxford, Georgetown, Groveland, Haverhill, Methuen, Merrimac, Newbury, Newburyport, North Andover, Rowley, Salisbury, and West Newbury.



## **Merrimack Valley Habitat for Humanity**

60 Island St, Lawrence, MA 01840

p: (978) 681-8858 f: (978) 681-4954

[www.merrimackvalleyhabitat.org](http://www.merrimackvalleyhabitat.org)

Partners with low-income families to help them build and purchase their own home.



## **Mitch's Place**

127 How St, Haverhill, MA 01830

p: (978) 241-3430

Shelter with beds available. Must call to register for space in advance.



## **Neighborhood Assistance Corporation of America (NACA)**

261 Common St, Lawrence, MA 01840

p: (978) 687-3993

e: [services@naca.com](mailto:services@naca.com) [www.naca.com](http://www.naca.com)

Assists low- and moderate-income people become homeowners with below-market interest rate mortgages and comprehensive housing services.



## **Northeast Legal Aid-Northeast Justice Center**

p: (978) 458-1465 Lawrence and Lowell, MA

Provides legal assistance for eviction defense and foreclosure prevention matters.



## **The Pettengill House, Inc**

p: (978) 463-8801 Salisbury, MA

Provides family stabilization services including referrals for housing and assistance with finding more permanent housing.



## **The Psychological Center, Inc**

11 Union St, Lawrence, MA 01840

p: (978) 291-2262

[www.psychologicalcenter.org](http://www.psychologicalcenter.org)

Offers housing services as detailed below. Residents have access to mental health services and parenting skills group. Also provides residential substance abuse services

### **Daybreak Shelter**

19 Winter St, Lawrence, MA 01841

p: (978) 975-4547 f: (978) 975-2672

Ages: 18+ yrs

Provides temporary shelter for individuals living with substance abuse, mental health issues, or homelessness. Sign in at 4 pm.

### **Women's View**

582-584 Haverhill St, Lawrence, MA 01843

p: (978) 687-1658 f: (978) 681-6075

Eligibility restrictions: women only

Offers a peer-led Women for Sobriety group, legal referrals, 24/7 support staff, and individual case management.

### **Pegasus House**

482 Lowell St, Lawrence, MA 01841

p: (978) 687-4257

Eligibility restrictions: women only Ages: 18–25 yrs

Offers residential long-term treatment funded by the Department of Public Health. Women generally referred by case manager in current placement (e.g., detox, jail, etc.).



## **Salvation Army**

[www.SalvationArmyMA.org](http://www.SalvationArmyMA.org)

Provides emergency assistance including utility assistance, rent assistance, and clothing.

### **Haverhill**

p: (978) 374-7571

### **Lawrence**

p: (978) 682-8038



## **YMCA of the North Shore**

[www.northshoreymca.org](http://www.northshoreymca.org) S

### **Haverhill YMCA**

p: (978) 374-0506 ext 2

Provides single room occupancy (SRO) housing for men and women.



## **YWCA of Greater Lawrence**

p: (978) 682-3039 Lawrence, MA

### **YWCA Fina House**

p: (978) 682-3039 Lawrence, MA

Provides housing services for victims of domestic violence and homeless pregnant or parenting teen mothers.









## **Massachusetts Immigration and Refugee Advocacy**

### **Coalition (MIRA)**

105 Chauncey St, Ste 901, Boston, MA 02111

p: (617) 350-5480

miracoalition.org

Ages: all Policy organization that promotes the rights of immigrants and refugees. Connects individuals to legal services, ESOL programs, health and human services, and Know Your Rights workshops.



## **Massachusetts Office for Refugees and Immigrants (ORI)**

600 Washington St, 4th Fl, Boston, MA 02111 p: (617) 727-7888 f: (617) 727-1822

TTY: (617) 727-8147

www.mass.gov/ori

Provides assistance with the citizenship process and promotes participation of refugees and immigrants as self-sufficient citizens.



## **Merrimack Immigrant and Education Center**

p: (978) 683-7316 Lawrence, MA

Provides support to immigrants and refugees, particularly Asian immigrants and refugees, with citizenship guidance, youth and elder programs, translation, and advocacy.



## **Northeast Legal Aid-Northeast Justice Center**

p: (978) 458-1465 Lawrence and Lowell, MA

Provides legal assistance on immigration issues to victims of domestic violence and non-citizen minors.



## **Notre Dame Education Center**

p: (978) 682-6441 Lawrence, MA

Provides citizenship education to prepare for citizenship interview and exam.

### **Children's Friend and Family Services**

(a division of the Justice Resource Institute [JRI]) 15 Union St, Ste 200, Lawrence, MA 01840

p: (978) 682-7289 f: (978) 686-2954

www.childrensfriend.net Ages: 7–18 yrs

Provides a youth mentoring program for at-risk youth, including in home and outpatient care, and court services. Also offers mental health services and parenting programs .

## Juvenile Justice



### Children's Friend and Family Services

(a division of the Justice Resource Institute [JRI]) 15 Union St, Ste 200, Lawrence, MA 01840

p: (978) 682-7289 f: (978) 686-2954

[www.childrensfriend.net](http://www.childrensfriend.net) Ages: 7–18 yrs

Provides a youth mentoring program for at-risk youth, including in home and outpatient care, and court services. Also offers mental health services (pg. 77) and parenting programs.

### Children's Law Center of Massachusetts

p: (781) 581-1977 Lynn, MA

Accepts court assigned cases for matters where a child allegedly violates criminal laws of the Commonwealth.

### Committee for Public Counsel Services (CPCS) Youth Advocacy Division (YAD)

44 Bromfield St, Boston, MA 02108

p: (617) 482-6212

[www.publiccounsel.net/ya](http://www.publiccounsel.net/ya)

Eligibility restrictions: low-income, by court appointment only Ages: 7–17 yrs

CPCS's statewide defender program for juveniles. Attorneys are appointed by the court to represent youth in delinquency cases

#### Lowell Office

40-44 Church St, 1st Fl, Lowell, MA 01852 p: (978) 856-6180f: (978) 446-3916

[www.publiccounsel.net/dir/lowell-ya](http://www.publiccounsel.net/dir/lowell-ya) Serves Lawrence and Lowell Juvenile Courts.

### Essex County District Attorney's Office

10 Federal St, Salem, MA 01970

p: (978) 745-6610 f: (978) 744-9470

p: (617) 586-1340 (victim assistance) [www.mass.gov/essexda](http://www.mass.gov/essexda)

Ages: all Prosecutor's office for criminal cases in Essex County. Provides crisis intervention, referrals to appropriate programs and service providers, information, and advocacy to victims.

#### Lawrence Office

Fenton Judicial Ctr, 2 Appleton St, Lawrence, MA 01840 p: (978) 683-4300f: (978) 794-3797

TTY: (978) 741-3163

Hours: M–F 8:30–4:30



## **Essex County Juvenile Court**

www.mass.gov/courts

The court where juvenile delinquency cases are heard as well as . Care & Protection and Child Requiring Assistance cases

### **Lawrence Session**

Fenton Judicial Ctr, 2 Appleton St, Lawrence, MA 01840 p: (978) 725-4900f: (978) 725-3878

TTY: (978) 741-3163

Jurisdiction: Amesbury, Ipswich, Merrimac, Newbury, Newburyport, Rowley, Salisbury, Topsfield, Wenham, West Newbury



## **Massachusetts Department of Youth Services (DYS)**

600 Washington St, 4th Fl, Boston, MA 02111 p: (617) 727-7575 f: (617) 717-0696

www.mass.gov/dys

Eligibility restrictions: youth committed to DYS Ages: 7–18 yrs Juvenile justice agency of Massachusetts. Services incorporate secure facilities, client services, clinical services, health services, substance abuse services, and education services.

### **Haverhill District Office**

143 Essex St, Haverhill, MA 01832

p: (978) 914-7507

### **Lawrence District Office**

15 Union St, Ste 407, Lawrence, MA 01840

p: (978) 651 -2350

### **Northeast Regional Office**

33 Gregory St, Middleton, MA 01949

p: (978) 716-1100 f: (978) 646-2342



## **One Can Help**

p: (617) 930-3468 Newton, MA

Provides specific resources not otherwise available to help a juvenile court-involved youth make positive steps forward.



## **The Pettengill House, Inc**

p: (978) 463-8801 Salisbury, MA

See page 46

Acts as a juvenile diversion community service site.



## **Salvation Army [www.SalvationArmyMA.org](http://www.SalvationArmyMA.org) See page 9**

Ages: 12–17 yrs

Bridging the Gap (BTG) program provides a twelve week life skills program after-school two to three days per week for court-involved and at-risk youth that need assistance getting back on track.

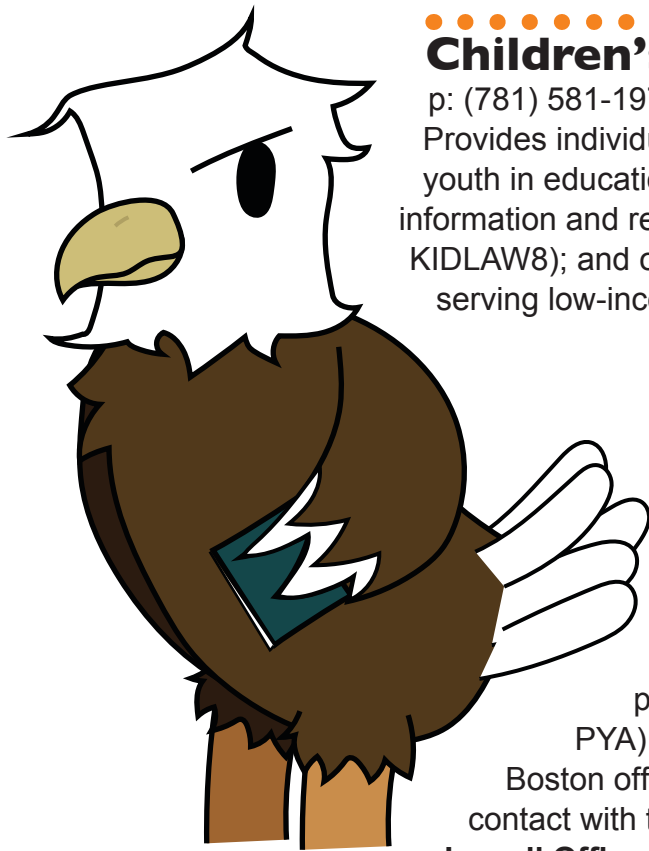
### **Haverhill**

p: (978) 420-4192

### **Lawrence**

p: (978) 682-8038

## Legal Services



### Children's Law Center of Massachusetts

p: (781) 581-1977 Lynn, MA

Provides individual legal representation to low-income children and youth in education, child welfare, and immigration issues; provides information and referrals, including a statewide help-line (1-888-KIDLAW8); and offers outreach to clinical and other non profit agencies serving low-income youth.

### Committee for Public Counsel Services (CPCS) Children & Family Law Program (CAFL)

p: (617) 482-6212 Boston, MA

Part of CPCS's statewide program that provides lawyers to children, young adults, and low-income parents in child welfare (Care & Protection, CRA, and PYA) cases. Attorneys are appointed by the court. The Boston office can help parents, children, and young adults get in contact with their court-appointed attorneys.

#### Lowell Office

p: (978) 446-3917

#### Salem Office

p: (978) 825-2070

### Committee for Public Counsel Services (CPCS) Public Defender Division

44 Bromfield St, Boston, MA 02108

p: (617) 482-6212

[www.publiccounsel.net/pd](http://www.publiccounsel.net/pd)

Eligibility restrictions: low-income, by court appointment only Ages: 18+ yrs Part of CPCS's statewide defender program for adult criminal cases. Attorneys must be appointed by the courts to represent defendants.

#### Lawrence Superior and District Court Office

Everett Mills, 15 Union St, Ste 110, Lawrence, MA 01840 p: (978) 856-6900 f: (978) 682-2793

[www.publiccounsel.net/dir/lawrence-dist-sup-pd](http://www.publiccounsel.net/dir/lawrence-dist-sup-pd) Serves Lawrence, Haverhill, Ipswich, and Newburyport District Courts and all Essex County Superior Courts.

#### Salem Superior and District Court Office

One Salem Green, Ste 501A, Salem, MA 01970 p: (978) 825-2020 f: (978) 741-8567

[www.publiccounsel.net/dir/salem-pd](http://www.publiccounsel.net/dir/salem-pd) Serves all Essex County Superior Courts.



## **Committee for Public Counsel Services (CPCS) Youth**

### **Advocacy Division (YAD)**

p: (617) 482-6212 Boston, MA

CPCS's statewide defender program for juveniles. Attorneys are appointed by the courts to represent children in delinquency cases.

#### **Lowell Office**

p: (978) 856-6180



### **Court Service Center**

Fenton Judicial Center

Law Library, 2 Appleton St, 2nd Fl, Lawrence, MA 01840 Hours: M–F 8:30-1, 2–4:30

Legal information (not advice) including help filling out court forms, information about court procedure, assistance with legal research, contact information for community resources, and access to court documents and interpreter services.



### **Disability Law Center**

p: (617) 723-8455 Boston, MA

Provides legal services for adults and children with disabilities to address health care, school exclusion, housing, and public benefits issues.



### **Essex County Bar Association**

45 Congress St, Ste 4100, Salem, MA 01970

p: (978) 741-7888 f: (978) 741-1348

[www.essexcountybar.org](http://www.essexcountybar.org)

Ages: all

Provides referrals to attorneys in the area who will offer reduced-fee consultations or representation.



### **Essex County District Courts**

[www.mass.gov/courts](http://www.mass.gov/courts) Hours: M–F 8:30–4:30

#### **Haverhill District Court\***

45 Ginty Blvd, Haverhill, MA 01831

p: (978) 373-4151

Jurisdiction: Boxford, Georgetown, Groveland, Haverhill \*This court is temporarily housed in Newburyport District Court and Haverhill City Hall. Call for details.

#### **Ipswich District Court**

188 State St, Rte. 1 Traffic Circle, Newburyport, MA 01950 p: (978) 462-2652 ext 2

f: (978) 462-5641

Jurisdiction: Ipswich, Topsfield

#### **Lawrence District Court**

Fenton Judicial Ctr, 2 Appleton St, Lawrence, MA 01840 p: (978) 687-7184

civil clerk: (978) 687-7184 ext 7304

criminal clerk: (978) 687-7184 ext 7303

TTY: (978) 685-2636



Jurisdiction: Andover, Lawrence, Methuen, North Andover

### **Newburyport District Court**

188 State St, Rte. 1 Traffic Circle, Newburyport, MA 01950 p: (978) 462-2652 ext 1

Jurisdiction: Amesbury, Merrimac, Newbury, Newburyport, Rowley, Salisbury, West Newbury



## **Essex County Juvenile Court**

[www.mass.gov/courts](http://www.mass.gov/courts)

### **Lawrence Session**

p: (978) 725-4900

TTY: (978) 741-3163

### **Newburyport Session\***

p: (978) 462-0617 ext 5 \*The Newburyport Session of the Essex County Juvenile Court is temporarily housed in part at Lawrence Juvenile Court pending completion of construction.



## **Essex County Superior Court**

[www.mass.gov/courts](http://www.mass.gov/courts)

### **Lawrence Session**

43 Appleton Way, Lawrence, MA 01840

p: (978) 242-1900 f: (978) 687-7869

civil clerk: (978) 242-1900 ext 1

probation: (978) 242-1905 f: (978) 682-0474

Jurisdiction: All cities and towns in Essex County

### **Newburyport Session**

145 High St, Newburyport, MA 01950

p: (978) 462-4474 f: (978) 462-4368

Jurisdiction: All cities and towns in Essex County

### **Salem Session**

56 Federal St, Salem, MA 01970

p: (978) 744-5500 f: (978) 741-0691

probation: (978) 825-4880 f: (978) 741-4368

TTY: (978) 744-5880

Jurisdiction: All cities and towns in Essex County



## **Essex Probate and Family Court**

[www.mass.gov/courts](http://www.mass.gov/courts)

### **Lawrence Session**

Fenton Judicial Ctr, 2 Appleton St, Lawrence, MA 01840 registrar: (978) 686-9692 f: (978) 687-3694

probation: (978) 744-1020 f: (978) 741-5732

Jurisdiction: All cities and towns in Essex County

### **Salem Session**

36 Federal St, Salem, MA 01970

p/TTY: (978) 744-1020

Jurisdiction: All cities and towns in Essex County



## **Gay and Lesbian Advocates and Defenders (GLAD)**

30 Winter St, Ste 800, Boston, MA 02108

p: (617) 426-1350 f: (617) 426-3594

[www.glad.org](http://www.glad.org)

Ages: all Provides legal information, referrals and, in some cases, representation to address discrimination based on sexual orientation, HIV status, and gender identity. Also offers LGBT services



## **Greater Boston Legal Services (GBLS)**

p: (617) 371-1234 Boston, MA

Provides legal assistance in a wide variety of matters including disability law, immigration issues, housing, and employment and wage violations.



## **Lawyer for the Day Program**

Eligibility restrictions: low-income

Provides assistance to those looking for advice, information, and in some cases, representation regarding family and probate matters. Hours frequently change. Call the particular Essex Probate and Family Court for updated information.

### **Essex Probate and Family Court – Lawrence Session**

Fenton Judicial Ctr, 2 Appleton St, Lawrence, MA 01840 p: (978) 686-9692

### **Essex Probate and Family Court – Salem Session**

(coordinated by the Essex County Bar Association) 36 Federal St, Salem, MA 01970

p: 978-744-1020 ext 1 (general court information)



## **Mass Legal Services**

[www.masslrf.org](http://www.masslrf.org)

Legal Resource Finder provides contact information for legal aid programs, government agencies, and court programs that may be able to help with a legal issue for free or low-cost.



## **Massachusetts Advocates for Children**

p: (617) 357-8431 Boston, MA

Provides legal assistance to children experiencing barriers to education. Offers helpline for information, assistance, and referrals.



## **Massachusetts Bar Association Lawyer Referral Service**

20 West St, Boston, MA 02111

p: (617) 654-0400

toll-free: (866) MASS-LRS or (866) 627-7577

[www.masslawhelp.com](http://www.masslawhelp.com)

Ages: all A lawyer referral service that can help with looking for an attorney.



## **Gay and Lesbian Advocates and Defenders (GLAD)**

p: (617) 426-1350 Boston, MA

Provides legal information, referrals, and, in some cases, representation to address discrimination based on sexual orientation and gender identity.

## **Gay, Lesbian, Bisexual, and Transgender National Hotline**

hotline: (888) 843-4564

youth talkline: (800) 246-7743 [www.youthtalkline.org](http://www.youthtalkline.org)

Provides telephone and email peer-counseling, as well as factual information and local resources on LGBT issues across the country.

## **GLBTQ Domestic Violence Project**

[www.glbtdvp.org](http://www.glbtdvp.org)

p: (617) 779-2130 (legal assistance)

Support for gay, lesbian, bisexual, transgender, and queer victims of abuse through direct services, education, and advocacy.

## **Greater Boston Parents, Families, and Friends of Lesbians and Gays (PFLAG)**

85 River St, Ste 3A, Waltham, MA 02453

p: (781) 891-5966 f: (781) 891-7444

helpline: (866) 427-3524 e: [info@gbpflag.org](mailto:info@gbpflag.org) [www.gbpflag.org](http://www.gbpflag.org)

Ages: all

Uses support, education, resources, a helpline, and advocacy to foster dialogue, create safe environments, counter homophobia and violence, and help parents and families to understand and connect with their LGBT children.

## **Massachusetts Commission on Gay, Lesbian, Bisexual, and Transgender Youth**

250 Washington St, 4th Fl, Boston, MA 02108 p: (617) 624-5495

[www.mass.gov/cgly](http://www.mass.gov/cgly)

Ages: all

Government advisory agency to all branches of state government. Provides resources aimed towards protecting and supporting the health and safety of LGBTQ+ youth.

## **Merrimack Valley Alliance of Gay, Lesbian, Bisexual and Transgender Youth**

190 Academy Rd, North Andover, MA 01845 [www.bagly.org/programs/youth-group/mcvagly](http://www.bagly.org/programs/youth-group/mcvagly)

Holds weekly meetings at North Parish Unitarian Universalist in North Andover Old Center to provide LGBTQ a safe environment to gather and discuss issues.





## **Amesbury Psychological Center, Inc**

24 Morril Pl, Amesbury, MA 01913

p: (978) 388-5700 f: (978) 388-4052

e: [amesburypsych@amesburypsychological.com](mailto:amesburypsych@amesburypsychological.com) [www.amesburypsychological.com](http://www.amesburypsychological.com)

Ages: 5+ yrs Hours: M–F 9–5

Provides a variety of mental health services including individual, couple, family, and group therapy. Also offers substance abuse services (pg. 93).



## **Andover Counseling Center**

565 Turnpike St, Ste 81, North Andover, MA 01845

p: (978) 682-1579 f: (978) 689-4582

[www.andovercounseling.com](http://www.andovercounseling.com) Ages: all

Serving all neighboring communities, specializes in learning disabilities, school advocacy support, and academic testing.



## **Andover Psychotherapy**

2 Dundee Park, Andover, MA 01810

p: (978) 475-6950

Provides individual therapy for children, adolescents, and adults.



## **Arbour Counseling Services**

p: (800) 222-2237

[www.arbourhealth.com](http://www.arbourhealth.com)

Ages: vary by program Fees: vary, primarily insurance Provides individual, couple, family, in-home, and group mental health counseling; crisis management; assessments and evaluations.

### **Haverhill Office**

116 Summer St, Haverhill, MA 01830

p: (978) 373-7010 f: (978) 373-1678

### **Lawrence Office**

599 Canal St, Ste 1 East, Lawrence, MA 01840

p: (978) 686-8202 f: (978) 686-1281

### **Lowell Treatment Center**

391 Varnum Ave, Lowell, MA 01854

p: (978) 703-2200 f: (781) 762-0550

e: [info@treatment-centers.net](mailto:info@treatment-centers.net)

Offers in-patient and partial hospitalization services, evaluations, in-home stabilization and therapy, and therapeutic mentoring.



## **Blue Skies Wellness, Inc**

232 Pleasant St, 2nd Fl, Methuen, MA 01844 p: (978) 655-1823 f: (978) 655-1759

hotline: (888) 336-1411 (confidential anti-bullying help for kids 13+) e: [blueskieswellnessinc@gmail.com](mailto:blueskieswellnessinc@gmail.com)

[www.blueskieswellnessinc.org](http://www.blueskieswellnessinc.org)

Ages: 3+ yrs Provides bullying prevention and mental health counseling. Also offers confidential anti-bullying help for kids.



## **Catholic Charities North**

[www.ccab.org/?q=location-north-boston](http://www.ccab.org/?q=location-north-boston)

Ages: all Family Counseling and Guidance Center

p: (978) 774-6820 Danvers, MA

Provides office- and home-based individual and family therapy as well as psychopharmacology for individuals seen by a therapist at this location. Outreach therapy services also available.



## **Center for Psychiatric Medicine**

290 Merrimack St, 1st Fl, Lawrence, MA 01843 p: (978) 685-8800 f: (978) 685-8808

e: [info@centerforpsychmed.com](mailto:info@centerforpsychmed.com) [www.centerforpsychmed.com](http://www.centerforpsychmed.com)

Specializes in neuropsychiatry, psychiatry, psychotherapy, addiction services, and outpatient detox programs



## **Children's Friend and Family Services**

(a division of the Justice Resource Institute [JRI]) p: (978) 682-7289 Lawrence, MA

p: (978) 482-2014 (clinic)

p: (978) 686-2954 (CSA)

Ages: 3–21 yrs, adults

Through its clinic, provides a variety of mental health services and programs geared toward children, youth, and families including individual, outreach, in-home, school-based, play, and trauma- focused cognitive behavioral therapy (TF-CBT) as well as therapeutic mentoring, juvenile court clinic services, and youth mentoring for at-risk youth. Also offers Community Service Agency (CSA) services which assist families to access services and coordinate care for children and youth with serious emotional disturbance in Andover, Lawrence, Methuen, and North Andover.



## **Counseling Associates of Dracut & Methuen**

e: [info@ma-nh-psychotherapy.com](mailto:info@ma-nh-psychotherapy.com) [www.cadm-therapists.com](http://www.cadm-therapists.com)

Ages: 4+ yrs Provides therapy for children and adults. Varying services for individuals, couples, and families.

### **Dracut Office**

14 Loon Hill Rd, Dracut, MA 01826

p:(978) 934-9444 f: (978) 441-0800

### **Methuen Office**

236 Pleasant St, Methuen, MA 01844

p: (978) 683-0133 f: (978) 683-9818



## **Counseling for Change Associates**

60 Island St #43, Lawrence, MA 01840

p: (978) 687-3700 f: (978) 928-2856

Provides counseling services for low-income clients.





## **Family Continuity**

360 Merrimack St, Bldg 9, 3rd Fl, Lawrence, MA 01843 p: (978) 687-1617 f: (978) 687-1597

toll-free: (866) 219-3320

e: [info@familycontinuity.org](mailto:info@familycontinuity.org) [www.familycontinuity.org](http://www.familycontinuity.org)

Ages: all

Provides outpatient mental health counseling. Also offers in-home therapy, community support program, therapeutic mentoring, and parenting classes. The Community Support Program provides intensive case management to individuals who are considered to be “at risk” within the community.



## **Family Counseling Association of Andover**

12 Essex St, Andover, MA 01810

p: (978) 222-3121 f: (978) 296-3460

e: [info@fca-andover.com](mailto:info@fca-andover.com) [www.fca-andover.com](http://www.fca-andover.com)

Ages: all

Individual and family counseling available. Serves all surrounding communities.



## **Family Services of the Merrimack Valley**

p: (978) 327-6600 Lawrence, MA

p: (978) 327-6613 (counseling appointments)

crisis help line: (978) 327-6607 or (866) 912-HOPE (4637) Ages: 5+ yrs (therapy); 21+ yrs (psychiatry)

Provides a range of services including trauma response services, outpatient therapy, in-home therapy, therapeutic mentoring, support groups, and psychiatric evaluation and follow up. Through its Samaritans of Merrimack Valley program, provides suicide prevention and postvention services including a crisis help line.

### **Family & Community Resource Center**

p: (978) 975-8800 Lawrence, MA

Provides mental health services for youth engaging in children requiring assistance (CRA) behaviors.



## **Home Health VNA**

360 Merrimack St, Bldg 9, Lawrence, MA 01843

p: (800) 933-5593

[www.homehealthvna.org](http://www.homehealthvna.org)

Provides home-based services, case management services, mental health counseling, and information to HIV-positive adolescents and homeless individuals.



## **Institute for Family Centered Services**

12 Methuen St, 1st Fl, Lawrence, MA 01840 p: (978) 794-7966 f: (978) 794-9890

[www.ifcsinc.com](http://www.ifcsinc.com)

Provides in-home and community-based treatment including diagnostic assessment, case management, outpatient treatment, crisis stabilization, therapeutic support, and family centered treatment.







services for children, youth, and their families. Also offers parent support (pg. 90).

### **Haverhill Transition Support Group**

7 Winter St, Haverhill, MA 01830 (Tu group)

409 Washington St, Haverhill, MA 01832 (W group) p: (978) 891-4097

e: cbisgrove@ppal.net

Eligibility Restrictions: parents of youth 14–26 Hours: 4th Tu 6–8; 2nd W 10:30–12:30

Groups offer transitional support and education for parents.

### **Lawrence Parent Support Group**

439 Union St, Lawrence, MA 01843

p: (978) 681-9581

e: dsantiago@mspcc.org Hours: 1st & 3rd Tu 6–7:45

### **Lowell Parent Support Group**

p: (508) 668-5739

e: ncollier@mspcc.org Hours: 2nd & 4th Tu 6–7:45

Call for location.



## **Priority Professional Care, Inc**

15 Union St, Ste 204, Lawrence, MA 01840

p: (978) 655-7782

www.ppcboston.com

Ages: all Provides individual and in-home services for children, youth, and their families.



## **Psychotherapy Associates of North Reading & Amesbury**

5 Market Sq, Ste 102, Amesbury, MA 01913

p: (978) 664-2566

www.panr.net

Provides psychological evaluations for children and adolescents with behavioral or emotional problems such as anxiety, depression, relationship counseling, and stress management. Also offers classes to help parents care for their children throughout the divorce process



## **Pyramid Builders Associates, Inc**

93 Euclid Ave, Lynn, MA 01904

p: (781) 780-3566 f: (781) 780-3569

e: info@pyramidbuilding.org www.pbacs.org

Provides mental health services to youth and families including in-home therapy, therapeutic mentoring, family therapy, testing and evaluations, and individual and couple counseling and therapy.



## **School-Based Health Centers**

### **Greater Lawrence Family Health Center**

Greater Lawrence Tech School

p: (978) 686-8521

Lawrence High School

p: (978) 722-8391



## Parenting Programming



### .....

#### **Adoption Journeys Merrimack Valley**

p: (978) 687-5852      Lawrence, MA  
Child & Family Services provides free family counseling, advocacy, and parent mentorship.

### .....

#### **Child Care Circuit**

(978) 686-4288      Lawrence, MA  
Provides child care resource and referral information as well as parenting support and resources.

### .....

#### **Children's Friend and Family Services**

(a division of the Justice Resource Institute [JRI]) p: (978) 682-7289 Lawrence, MA  
Provides assistance to teen parents, parenting support groups, and education for parents of children with behavioral health needs.

### .....

#### **Community Day Learning**

p: (978) 722-8492      Lawrence, MA  
Teen Parent Infant/Toddler Program  
p: (978) 273-5514      Lawrence, MA  
Provides case management for young parents, connects to health care services and providers, and offers day care.

### .....

#### **Family Services of the Merrimack Valley**

p: (978) 327-6600      Lawrence, MA  
Provides a variety of parenting programs to help parents, children, and relatives gain knowledge and skills to create a stronger, healthier family unit. Also offers a court-mandated parent education class for divorcing parents.

#### **Families & Youth Initiative**

Lawrence/Methuen Community Coalition p: (978) 332-8250      Lawrence, MA

#### **Family & Community Resource Center**

p: (978) 975-8800      Lawrence, MA  
Provides programs and services for families in need of assistance and support.







## **The Mother Connection, Inc**

PO Box 2089, Andover, MA 01810 [www.themotherconnection.org](http://www.themotherconnection.org)

Provides information, resources, support, and recreational activities for mothers and their families in the Merrimack Valley.



## **Parent/Professional Advocacy League (PPAL)**

p: (866) 815-8122 Boston, MA

Support groups for parents organized by affiliated organizations.

### **Haverhill Transition Support Group**

p: (978) 891-4097

Groups offer transitional support and education for parents.

### **Lawrence Parent Support Group**

p: (978) 681-9581

### **Lowell Parent Support Group**

p: (508) 668-5739



## **The Pettengill House, Inc**

p: (978) 463-8801 Salisbury, MA

Provides family stabilization services, home visits, assessments, and interventions and supports for seniors raising children.



## **Professional Center for Child Development**

[www.theprofessionalcenter.org](http://www.theprofessionalcenter.org)

Eligibility restrictions: child with developmental disability

Through its Early Intervention program, provides parent support groups, parent/child groups, and workshops for child care givers and families at the following locations:

### **Andover**

p: (978) 475-3806

This location has a parent library with materials about many physical and mental health issues.

### **Lawrence**

p: (978) 688-5070



## **Psychotherapy Associates of North Reading & Amesbury**

p: (978) 664-2566

Provides classes to help parents care for their children throughout the divorce process.



## **YWCA of Greater Lawrence**

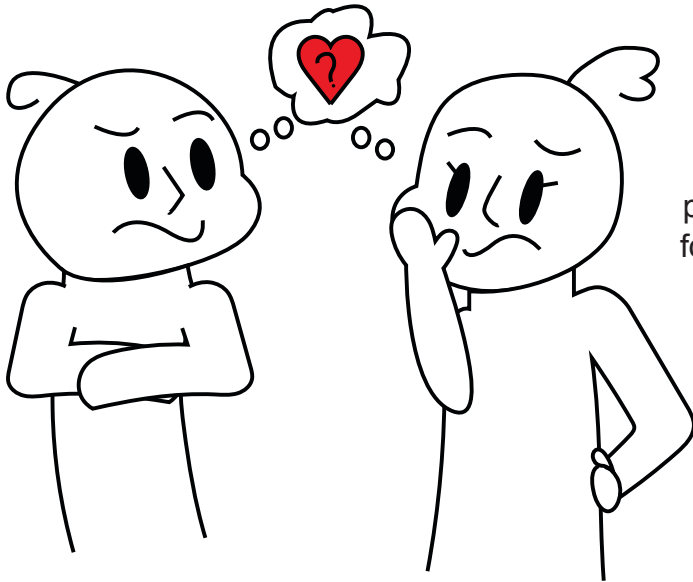
p: (978) 687-0331 Lawrence, MA

p: (978) 682-3039 (Teen Parenting Program)

Ages: 17–21 yrs

Provides support and housing to pregnant and parenting teens and their children so young mothers can continue their education and gain skills.

## Reproductive and Sexual Health Services



### **AIDS Action Committee**

75 Amory St, Boston, MA 02119

p: (617) 437-6200

p: (877) 627-3933 (toll-free sexual health helpline for young adults) p: (877) 232-4636 (toll-free HIV/AIDS and Hepatitis C hotline) [www.aac.org](http://www.aac.org)

[www.mariatalks.com](http://www.mariatalks.com)

Provides information about sexuality, STDs, birth control, emergency contraception, and parenting.

### **CDC's National Prevention Information Network**

p: (800) 243-7012 (teens only)

p: (800) 227-8922

Spanish: (800) 344-7432

Provides information on prevention of HIV/AIDS, STIs, tuberculosis, and viral hepatitis.

### **Family Services of the Merrimack Valley**

p: (978) 327-6600 Lawrence, MA

Eligibility restrictions: Lawrence residents Ages: 11–18 yrs

The SIBS Program engages siblings of pregnant and parenting teens through case management and group services to prevent early pregnancy.

### **Health Quarters**

[www.healthq.org](http://www.healthq.org)

Provides confidential reproductive healthcare, prevention, and education services for low income men, women, and teens. Offers services including HIV/STD testing and treatment, pregnancy testing and counseling, breast and cervical cancer screening, and birth control.

#### **Haverhill**

215 Summer St, Ste 16, Haverhill, MA 01830

p: (978) 228-2291

#### **Lawrence**

280 Merrimack St, Ste 501, Lawrence, MA 01843

p: (978) 705-6637





## **Bridgewell**

66 Silsbee St, Lynn, MA 01902

p: (781) 581-9270 f: (781) 581-8413

e: [projectcope@bridgewell.org](mailto:projectcope@bridgewell.org) [www.bridgewell.org/projectcope](http://www.bridgewell.org/projectcope)

Ages: all

Through Project Cope, provides outpatient, group, and residential substance abuse and addiction services and outpatient and court-ordered behavioral health services.



## **Habit Management Institute Methadone Clinic**

10 Embankment St, Lawrence, MA 01841

p: (978) 687-6300

[www.crchealth.com](http://www.crchealth.com) Ages: all

Provides treatment to individuals who are attempting to overcome an addiction or dependence on heroin or other opioids.



## **Haven of Hope**

76 Union St, Methuen, MA 01844

p: (978) 258-3982

e: [havenofhope@havenofhopemethuen.com](mailto:havenofhope@havenofhopemethuen.com) [www.havenofhopemethuen.com](http://www.havenofhopemethuen.com)

Eligibility restrictions: women only

=Faith based, 12-step "transformation" house that provides a safe and sober living environment for women learning to cope without drugs or alcohol.



## **Holy Family Hospital [www.holyfamily-hospital.org](http://www.holyfamily-hospital.org)**

Haverhill

p: (978) 374-2000

p: (978) 420-1156 (comprehensive addiction program) [www.holyfamily-hospital.org/services-directory/behavioral-health](http://www.holyfamily-hospital.org/services-directory/behavioral-health)

Ages: 18+ yrs

Through its Comprehensive Addiction Program, provides inpatient medical assistance while going through detoxification from drugs and alcohol, and, following discharge, provides outpatient support services.



## **Lahey Health Behavioral Services**

**H.A.R.T. House**

p: (978) 851-0969 Tewksbury, MA Eligibility restrictions: women and children only

Residential treatment for women and their children, including individual, family, and group therapy; relapse prevention; parenting education; and access/referral to community resources.

**Haverhill Outreach Counseling**

p: (978) 373-3086 ext 3 Haverhill, MA

Provides outpatient therapy to support individuals struggling with substance abuse.



## **Lowell House, Inc**

555 Merrimack St, Lowell, MA 01854

p: (978) 454-2997

[www.lowellhouseinc.org](http://www.lowellhouseinc.org)

Ages: 14+ yrs for outpatient; 18+ yrs for residential

Provides residential and outpatient treatment and living options that support recovery. Structured Outpatient Addiction Program (SOAP) also offers individual, group, and family therapy; alcohol education; and intensive day structured outpatient addiction programs.



## **Massachusetts Al-Anon and Alateen**

p: (508) 366-0556

[www.ma-al-anon-alateen.org](http://www.ma-al-anon-alateen.org)

Provides support groups to anyone who deals with the effects of a loved one's substance abuse. Meetings occur all over the state.



## **Massachusetts Department of Public Health (DPH)**

p: (617) 624-6000 Boston, MA

Bureau of Substance Abuse Services (BSAS)

p: (617) 624-5111 Boston, MA

Coordinates a variety of programs for teens and young adults experiencing difficulties with substance abuse, including outpatient counseling, detoxification and stabilization, residential placements, and recovery homes.



## **Massachusetts Substance Abuse Information and Education Helpline**

p: (800) 327-5050

e: [helpline@hria.org](mailto:helpline@hria.org) [www.helpline-online.com](http://www.helpline-online.com)

Provides referrals and information about treatment and prevention services throughout Massachusetts 24-hours a day.



## **Motivating Youth Recovery (MYR) Community Healthlink**

12 Queen St, Worcester, MA 01610

p: (508) 436-2534 (24/7 intake)

[www.communityhealthlink.org](http://www.communityhealthlink.org)

Ages: 14+ yrs

Through its youth stabilization and detox unit, MYR provides adolescents living with a substance related disorder with a safe environment and structured schedule to aid in recovery.



## **New England Region of Narcotics Anonymous (NERNA)**

p: (866) 624-3578

e: [info@newenglandna.org](mailto:info@newenglandna.org) [www.newenglandna.org](http://www.newenglandna.org)

Support group for those recovering from drug addiction. Call toll-free or check website for meeting locations and times.



## **North American Family Institute (NFI)**

p: (978) 536-0286 Danvers, MA

### **Haverhill Office**

p: (978) 373-1181

Ages: 13–18 yrs (SOAP)

16+ yrs (Shelter-SOAP) Provides Structured Outpatient Addiction Program (SOAP) as well as Shelter-SOAP for homeless individuals with addiction or co-occurring mental health disorders. SOAP provides intake, individualized treatment plans, group and individual therapy, assistance with housing, medical referrals, and aftercare support.



## **The Pettengill House, Inc**

p: (978) 463-8801 Salisbury, MA

Provides substance abuse assistance and crisis intervention.



## **The Psychological Center, Inc**

p: (978) 291-2262 Lawrence, MA

Provides residential and assorted services for individuals living with substance abuse at the following locations:

### **Daybreak Shelter**

p: (978) 975-4547 Lawrence, MA Provides a temporary shelter. Sign in at 4 pm.

### **Women's View**

p: (978) 687-1658 Lawrence, MA

Offers a peer-led Women for Sobriety group, legal referrals, 24/7 support staff, and individual case management.

### **Pegasus House**

p: (978) 687-4257 Lawrence, MA

Offers residential long-term treatment.



## **Serenity at Summit**

61 Brown St, Haverhill, MA 01830

p: (978) 994-0509

e: [admissions@summithelps.com](mailto:admissions@summithelps.com) [www.serenityatsummit.com](http://www.serenityatsummit.com)

Ages: 18+ yrs

Provides detox and residential treatment services to help individuals with drug or alcohol addiction.



## **Spectrum Health Systems**

100 Plaistow Rd, Haverhill, MA 01830

p: (800) 464-9555 (24/7 intake) [www.spectrumhealthsystems.org](http://www.spectrumhealthsystems.org)

Medication-assisted treatment for opiate addiction.

### **New Beginnings Peer Recovery Center**

487 Essex St, Lawrence, MA 01840

p: (978) 655-3674 f: (978) 258-4355

e: [newbeginnings@spectrumhealthsystems.org](mailto:newbeginnings@spectrumhealthsystems.org) [www.newbeginningsprc.org](http://www.newbeginningsprc.org)

Provides peer support services for adults in various stages of recovery.







Formed under the Safe and Successful Youth Initiative, serves high-risk youth who have been identified through the police department. Youth are offered case management, education, employment, mentorship, and life skills.

●●●●●●●●●●

## **Let's Get Ready**

p: (617) 366-2643 Boston, MA

Provides Lawrence high school students with college-aged coaches who teach SAT strategies and help in the college application and financial aid processes.

●●●●●●●●●●

## **Massachusetts Rehabilitation Commission (MRC)**

p: (617) 204-3600 Boston, MA

voice/TDD: (800) 245-6543

Provides assistance to people who have a disability who would like to find or return to work. The Vocational Rehabilitation Program

works with employers to create jobs and increase employer awareness of the benefits of diversity in the workplace.

### **Lawrence Area Office**

p/TTY: (978) 685-1731

Salem Area Office

p: (978) 745-8085

●●●●●●●●●●

## **Merrimack Valley Community Service Corps**

p: (978) 686-9407 Lawrence, MA

Offers the Youth Volunteer Corps of America program which provides volunteer opportunities to youth during the summer.

●●●●●●●●●●

## **Methuen Arlington Neighborhood, Inc.**

p: (978) 691-5645 Methuen, MA

Provides the MVP Program for teens which focuses on career, leadership, social development, and academic achievement. Helps prepare teens for college and/or careers.

●●●●●●●●●●

## **My Life My Choice**

989 Commonwealth Ave, Boston, MA 02215

p: (617) 779-2179

[www.fightingexploitation.org](http://www.fightingexploitation.org)

Provides immediate and long term support for victims of sexual exploitation including survivor mentorship, leadership development, intensive case management, and community building. Also offers prevention education.



## **Salvation Army**

[www.SalvationArmyMA.org](http://www.SalvationArmyMA.org) See page 9

Ages: 12–17 yrs Bridging the Gap (BTG) program provides a twelve week life skills program after-school two to three days per week for court-involved and at-risk youth that need assistance getting back on track.

### **Haverhill**

p: (978) 420-4192

### **Lawrence**

p: (978) 682-8038



## **Si, Se Puede, Inc**

p: (978) 685-4074 Lawrence, MA

Offers a work-study program and college preparation assistance.



## **UTEC**

35 Warren St, Lowell, MA 01852

p: (978) 441-9949 f: (978) 654-6727

Eligibility restrictions: youth who are out of school, gang or criminally involved, expecting or parenting

Ages: 16–24 yrs

Provides programs for at-risk youth that instill social justice and civic engagement. Programs include transitional coaches, enrichment activities, workforce development, and classes in culinary, social justice, woodworking, and more.



## **ValleyWorks Career Center**

[www.valleyworks.cc](http://www.valleyworks.cc)

Provides employment and job training opportunities, work readiness, internship opportunities, skills training and tutoring, and career development.

### **Lawrence**

p: (978) 722-7000

### **Haverhill**

p: (978) 241-4730



## **YMCA of the North Shore**

[www.northshoreymca.org](http://www.northshoreymca.org)

### **Haverhill YMCA**

p: (978) 374-0506

Ages: 13–18 yrs

Hours: M–F 2:30–9; Th 5 (Teen Leaders Club) Sa 7–10 (Y-Night)

Provides a drop-in teen center offering service learning projects and clubs that help build self-esteem and leadership skills.



## **You Forward**

p: (781) 771-1302

Through its drop-in centers, offers young adults with mental health concerns support to reach their goals.



## **Youth Development Organization (YDO)**

p: (978) 688-4300 Lawrence, MA

Offers individualized after-school and summer enrichment and academic programs to low- to moderate-income youth in the city.



## **Youth Villages**

400 West Cummings Park, Ste 5200, Woburn, MA 01801

p: (781) 937-7974 f: (781) 937-7901

[www.youthvillages.org](http://www.youthvillages.org)

Ages: 17–22 yrs Through its LifeSet Program, offers home- and community-based support for vulnerable youth, particularly former foster youth, to help them transition into adulthood successfully. Areas of focus include stable housing, employment, educational goals, independent living skills, and stable relationships.



## **YouthBuild Lawrence**

335 Haverhill St, Lawrence, MA 01840

p: (978) 681-0548

[www.massyouthbuild.org](http://www.massyouthbuild.org) Ages: 16–24

Provides training in construction, certifications, HiSET classes, case managers, and work placement after exiting the program.



## **YWCA of Greater Lawrence**

p: (978) 687-0331

Eligibility restrictions: girls only Ages: 5–17 yrs

Provides girls from Lawrence with opportunities to build academic, physical, and social skills in order to help them to make healthy and safe choices in adolescence



## **YWCA of Haverhill**

p: (978) 374-6121

Eligibility restrictions: girls only Ages: 14+ yrs

The Girls Empowered Means Success program offers a group in which to help educate and empower teen girls to achieve success and joy, and promote leadership.

## Public Schools



### **Andover Public Schools**

36R Bartlet St, Andover, MA 01810 p: (978) 247-7000

[www.aps1.net](http://www.aps1.net)

New students enroll at appropriate school. See website.

Student Services (including Special Education) p: (978) 247-7040

#### **Bancroft Elementary**

p: (978) 247-9500

#### **High Plain Elementary**

p: (978) 247-8600

#### **Sanborn Elementary**

p: (978) 247-9700

#### **Shawsheen Preschool**

p: (978) 247-8200

#### **South Elementary**

p: 978-247-9800

#### **West Elementary**

p: (978) 247-5300

#### **Doherty Middle**

p: (978) 247-9400

#### **West Middle**

p: (978) 247-5400

#### **Wood Hill Middle**

p: (978) 247-8800

#### **Andover High**

p: (978) 247-5500



### **Lawrence Public Schools**

233 Haverhill St, Lawrence, MA 01841

p: (978) 975-5905 f: (978) 722-8550

[www.lawrence.k12.ma.us](http://www.lawrence.k12.ma.us)

New students entering grades 9–12 enroll at the Lawrence High School Campus.

Family Resource Center (including Special Education) New K–8 students enroll here.

p: (978) 975-5900

#### **Breen School (PreK–K)**

p: (978) 975-5932

#### **Hennessey Elementary (Pre K–2)**

p: (978) 975-5950

#### **Lawlor (K)**

p: (978) 975-5956

#### **Lawrence Family Public Academy (PreK–K)**

p: (978) 722-8030

**Rollins (Pre K–K)**

p: (978) 722-8190

**Bruce (3-8)**

p: (978) 975-5935

**Community Day Arlington Elementary**

p: (978) 722-8311

**Frost Elementary**

p: (978) 975-5941

**Guilmette Elementary**

p: (978) 686-8150

**Leahy (K–5)**

p: (978) 975-5959

**Oliver Partnership (1-5)**

p: (978) 722-8170

**Parthum Elementary**

p: (978) 691-7200

**School for Exceptional Studies (1-12)**

p: (978) 975-5980

**School for Exceptional Studies at the Annex (1-9)**

p: (978) 722-8160

**South Lawrence East Elementary**

p: (978) 975-5970

**Tarbox (1-5)**

p: (978) 975-5983

**Wetherbee (K–8)**

p: (978) 557-2900

**Arlington Middle**

p: (978) 975-5930

**Frost Middle**

p: (978) 722-8810

**Guilmette Middle**

p: (978) 722-8270

**Parthum Middle**

p: (978) 691-7224

**Spark Academy (6-8)**

p: (978) 975-5993

**Up Academy Leonard (6-8)**

p: (978) 722-8159

**Up Academy Oliver (6-8)**

p: (978) 722-8670

**High School Learning Center**

p: (978) 975-5917

**Lawrence High Campus**

p: (978) 975-2750

**9th Grade Academy**

p: (978) 975-2750

**10th Grade Academy**

p: (978) 946-0724



**Abbott Lawrence Academy**

p: (978) 946-0711

**Business, Management and Finance High**

p: (978) 946-0713

**Enlace Academy (9-10)**

p: (978) 946-0714

**Health and Human Services Academy**

p: (978) 946-0735

**Humanities and Leadership Development High**

p: (978) 946-0724

**International High**

p: (978) 946-0712

**Mathematics, Science and Technology High**

p: (978) 946-0719

**Performing and Fine Arts High (10-12)**

p: (978) 946-0766

**Phoenix Academy Lawrence**

p: (978) 722-8410

  
**Methuen Public Schools**

10 Ditson Pl, Methuen, MA 01844

p: (978) 722-6000 f: (978) 722-6002

[www.methuen.k12.ma.us](http://www.methuen.k12.ma.us)

New students enroll at appropriate school.

**Special Education/Student Services**

p: (978) 722-6014

  
**North Andover Public Schools**

1600 Osgood St, North Andover, MA 01845 p: (978) 794-1503 f: (978) 794-0231

[www.northandoverpublicschools.com](http://www.northandoverpublicschools.com) Enrollment information online.

**Special Education**

p: (978) 794-1717

**Early Childhood Center**

CUBS (PreK)

p: (978) 794-1577

**Atkinson Elementary**

p: (978) 794-0124

**Franklin Elementary**

p: (978) 794-1990

**Kittredge Elementary**

p: (978) 794-1688

**Annie L. Sargent (K-5)**

p: (978) 725-3673

**Thomson Elementary**

p: (978) 794-1545

**North Andover Middle**



www.cdcps.org

Prospect (2-8)

73 Prospect St, Lawrence, MA 01841

p: (978) 681-9910 f: (978) 681-5838

www.cdcps.org

**R. Kingman Webster ELC (PreK-1)**

7 Ballard Way, Lawrence, MA 01843

p: (978) 688-4343 f: (978) 686-9382

www.thecommunitygroupinc.org/cdcps-r-kingman-webster

**R. Kingman Webster (PreK-4)**

439 South Union St, Lawrence, MA 01843 p: (978) 686-9327

www.thecommunitygroupinc.org/cdcps-r-kingman-webster

## **Hill View Montessori Charter Public School (K-8)**

75 Foundation Ave, Haverhill, MA 01835

p: (978) 521-2616 f: (978) 521-2656

www.hillviewmontessori.org

All Massachusetts residents are eligible. Haverhill residents receive enrollment priority.

## **Lawrence Family Development Charter School (K-8)**

34 West St, Lawrence, MA 01841

p: (978) 689-9863 f: (978) 689-8133

www.lfdcs.org

Lawrence residents only.

## **Silver Hill Horace Mann Charter School (K-5)**

675 Washington St, Haverhill, MA 01832

p: (978) 374-3448 f: (978) 374-3461

www.haverhill-ps.org/silverhill Haverhill residents only.

### **Special Education/ Schools**

To find all special education and private schools in your area, go to [profiles.doe.mass.edu](http://profiles.doe.mass.edu)

### **Head Start Programs**

Head Start programs provide comprehensive early childhood education, health, nutrition, and parent involvement services to low- income children and their families.

Community Action, Inc (CAI) Head Start and Early Head Start

75 Elm Street, Haverhill, MA 01830

p: (978) 372-5052

www.communityactioninc.org/index.php/hsnew

Serves Amesbury, Boxford, Georgetown, Groveland, Haverhill, Merrimac, Newbury, Newburyport, Rowley, Salisbury, and West Newbury





## **Committee for Public Counsel Services (CPCS) Public**

### **Defender Division**

44 Bromfield St, Boston, MA 02108

p: (617) 482-6212

[www.publiccounsel.net/pd](http://www.publiccounsel.net/pd) Eligibility restrictions: low-income, by court appointment only Ages: 18+ yrs  
CPCS's statewide defender program for adult criminal cases. Attorneys are appointed by the courts to represent low-income defendants.

#### **Lawrence Superior and District Court Office**

Everett Mills, 15 Union St, Ste 110, Lawrence, MA 01840 p: (978) 856-6900 f: (978) 682-2793

[www.publiccounsel.net/dir/lawrence-dist-sup-pd](http://www.publiccounsel.net/dir/lawrence-dist-sup-pd) Serves Lawrence, Haverhill, and Newburyport District Courts and all Essex County Superior Courts.

Salem Superior and District Court Office One Salem Green, Ste 501A, Salem, MA 01970 p: (978) 825-2020 f: (978) 741-8567

[www.publiccounsel.net/dir/salem-pd](http://www.publiccounsel.net/dir/salem-pd) Serves all Essex County Superior Courts.



## **Committee for Public Counsel Services (CPCS) Youth**

### **Advocacy Division (YAD)**

44 Bromfield St, Boston, MA 02108

p: (617) 482-6212

[www.publiccounsel.net/ya](http://www.publiccounsel.net/ya) Eligibility restrictions: low-income, by court appointment only Ages: 7–17 yrs  
CPCS's statewide defender program for juveniles. Attorneys are appointed by the courts to represent children in delinquency cases.

#### **Lowell Office**

40-44 Church St, 1st Fl, Lowell, MA 01852 p: (978) 856-6180 f: (978) 446-3916

[www.publiccounsel.net/dir/lowell-ya](http://www.publiccounsel.net/dir/lowell-ya)

Serves Lawrence and Lowell Juvenile Courts.



## **Essex County Bar Association**

45 Congress St, Ste 4100, Salem, MA 01970

p: (978) 741-7888 f: (978) 741-1348

Ages: all

Provides referrals to attorneys in the area who will offer reduced-fee consultations or representation.



## **Essex County District Attorney's Office**

10 Federal St, 5th Fl, Salem, MA 01970

p: (978) 745-6610 f: (978) 744-9470

p: (617) 586-1340 (victim assistance) [www.mass.gov/essexda](http://www.mass.gov/essexda)

Ages: all

Prosecutor's office for criminal cases in Essex County. Provides crisis intervention, referrals to appropriate programs and service providers, information, and advocacy to victims.

#### **Lawrence Office**

Fenton Judicial Ctr, 2 Appleton St, Lawrence, MA 01840

p: (978) 683-4300 f: (978) 794-3797

TTY: (978) 741-3163



## **Essex County District Courts**

[www.mass.gov/courts](http://www.mass.gov/courts)

Haverhill District Court\*

45 Ginty Blvd, Haverhill, MA 01831

p: (978) 373-4151

Jurisdiction: Boxford, Georgetown, Groveland, Haverhill

\*This court is temporarily housed in Newburyport District Court and Haverhill City Hall. Call for details.

### **Ipswich District Court**

188 State St, Rte. 1 Traffic Circle, Newburyport, MA 01950 p: (978) 462-2652 ext 2

f: (978) 462-5641

Jurisdiction: Ipswich, Topsfield

### **Lawrence District Court**

Fenton Judicial Ctr, 2 Appleton St, Lawrence, MA 01840 p: (978) 687-7184

civil clerk: (978) 687-7184 ext 7304

criminal clerk: (978) 687-7184 ext 7303

TTY: (978) 685-2636

Jurisdiction: Andover, Lawrence, Methuen, North Andover

### **Newburyport District Court**

188 State St, Rte 1 Traffic Circle, Newburyport, MA 01950 p: (978) 462-2652 ext 1

Jurisdiction: Amesbury, Merrimac, Newbury, Newburyport, Rowley, Salisbury, West Newbury



## **Essex County Juvenile Court**

[www.mass.gov/courts](http://www.mass.gov/courts)

The court where juvenile delinquency, care & protection, and Child Requiring Assistance (CRA) cases are heard.

### **Lawrence Session**

Fenton Judicial Ctr, 2 Appleton St, Lawrence, MA 01840 p: (978) 725-4900f: (978) 725-3878

TTY: (978) 741-3163

Jurisdiction: Andover, Boxford, Georgetown, Groveland, Haverhill, Lawrence, Methuen, North Andover.

### **Newburyport Session\***

188 State St, Rte 1, Traffic Circle, Newburyport, MA 01950 p: (978) 462-0617 f: (978) 463-7950

Jurisdiction: Amesbury, Ipswich, Merrimac, Newbury, Newburyport, Rowley, Salisbury, Topsfield, West Newbury

\*The Newburyport Session of the Essex County Juvenile Court is temporarily housed in part at Lawrence Juvenile Court pending completion of construction.



## **Essex County Superior Court**

[www.mass.gov/courts](http://www.mass.gov/courts)

Lawrence Session

43 Appleton Way, Lawrence, MA 01841

p: (978) 242-1900 f: (978) 687-7869

civil clerk: (978) 242-1900 ext 1

probation: (978) 242-1905 f: (978) 682-0474

Jurisdiction: All cities and towns in Essex County

### **Newburyport Session**







Serves Amesbury, Andover, Boxford, Georgetown Groveland, Haverhill, Lawrence, Merrimac, Methuen, Newbury, Newburyport, North Andover, Rowley, Salisbury, and West Newbury

**North Shore Area Office**

100 Cummings Center, Ste 150B, Beverly, MA 01915 p: (978) 927-2727 f: (978) 927-9182  
TTY: (978) 927-8828

Serves Ipswich and Topsfield

**Northeast Region Office**

Hogan Regional Center, 450 Maple St, Danvers, MA 01923 p: (978) 774-5000 ext 850 (eligibility and intake)

.....  
**Massachusetts Department of Early Education and Care (DEEC)**

51 Sleeper St, 4th Fl, Boston, MA 02210  
p: (617) 988-6600 f: (617) 988-2451  
[www.mass.gov/eec](http://www.mass.gov/eec)

Licenses and monitors daycare homes, preKs, group homes, shelters, and after-school programs. Also licenses adoption and foster care placement agencies.

.....  
**Massachusetts Department of Elementary and Secondary Education (DESE)**

(including Program Quality Assurance Services [PQA]) 75 Pleasant St, Malden, MA 02148  
p: (781) 338-3700 f: (781) 338-3710  
[www.doe.mass.edu](http://www.doe.mass.edu) [www.doe.mass.edu/pqa](http://www.doe.mass.edu/pqa)

Ages: 3–22 yrs

The state agency responsible for implementing laws relative to primary and secondary education and monitoring the education system in Massachusetts. PQA is a division that investigates and resolves complaints from the public that public schools have violated a law relating to education

.....  
**Massachusetts Department of Housing and Community Development (DHCD)**

100 Cambridge St, Ste 300, Boston, MA 02114  
p: (617) 573-1100 TTY: (617) 573-1140  
p: (800) 632-8175 (cold relief helpline) [www.mass.gov/dhcd](http://www.mass.gov/dhcd)

Provides resources for low- and moderate-income housing. For emergency housing, individuals can call the central number or walk in to the local DTA offices (listed below). Also operates a cold relief helpline which provides financial assistance for heat.

.....  
**Massachusetts Department of Mental Health (DMH)**

25 Staniford St, Boston, MA 02114  
p: (617) 626-8000 TTY: (617) 727-9842  
[www.mass.gov/dmh](http://www.mass.gov/dmh)

Eligibility restrictions: individuals who suffer significant functional impairment due to mental illness/serious emotional disturbance

Ages: all

Provides referrals, providers, and placements for individuals with severe mental health diagnoses.

Essex North Site Office

280 Merrimack St, 3rd Fl, Lawrence, MA 01843 p: (978) 738-4500 f: (978) 738-4559

Serves Amesbury, Andover, Boxford, Georgetown, Groveland, Haverhill, Lawrence, Merrimac, Methuen, Newbury, Newburyport, North Andover, Rowley, Salisbury, and West Newbury

North Shore Site Office

35 Congress St, Salem, MA 01970

p: (978) 741-7300 f: (978) 741-7340

Serves Ipswich and Topsfield

Northeast Area Office

PO Box 387, Tewksbury, MA 01876

p: (978) 863-5000 f: (978) 863-5091

TTY: (978) 640-1193



## **Massachusetts Department of Public Health (DPH)**

250 Washington St, Boston, MA 02109

p: (617) 624-6000 TTY: (617) 624-6001

p: (800) 882-1435 (Community Support Line) [www.mass.gov/dph](http://www.mass.gov/dph)

Ages: all

Government health agency coordinating health services statewide. Community Support Line informs families with children with special health needs about public programs, resources, and benefits for which they may be eligible. DPH also provides substance abuse services through its Bureau of Substance Abuse Services (BSAS).



## **Massachusetts Department of Transitional Assistance (DTA)**

600 Washington St, #4, Boston, MA 02111

Document Processing Ctr: PO Box 4406, Taunton, MA 02780-0420 p: (617) 348-8500

p: (800) 249-2007 (application info hotline M–F 8:45–5)

toll-free: (866) 950-FOOD (3663)

[www.mass.gov/dta](http://www.mass.gov/dta)

Eligibility restrictions: low-income

Ages: all

Provides domestic violence services, cash assistance of various kinds, and food assistance, including through the Supplemental Nutrition Assistance Program (SNAP).

### **Lawrence Office**

280 Merrimack St, Lawrence, MA 01843

p: (978) 725-7100 f: (617) 887-8765

Serves Amesbury, Andover, Boxford, Georgetown, Groveland, Haverhill, Methuen, Merrimac, Newbury, Newburyport, North Andover, Rowley, Salisbury, and West Newbury

### **North Shore Office**

45 Congress St, Salem, MA 01970

p: (978) 825-7300 f: (617) 887-8765

Serves Ipswich and Topsfield



## **Massachusetts Department of Youth Services (DYS)**

600 Washington St, 4th Fl, Boston, MA 02111 p: (617) 727-7575 f: (617) 717-0696

[www.mass.gov/dys](http://www.mass.gov/dys)

Eligibility restrictions: youth committed to DYS Ages: 7–18 yrs

Juvenile justice agency of Massachusetts. Services incorporate secure facilities, client services, clinical services, health services, substance abuse services, and education services.

### **Haverhill District Office**

143 Essex St, Haverhill, MA 01832

p: (978) 914-7507

### **Lawrence District Office**

15 Union St, Ste 407, Lawrence, MA 01840

p: (978) 651-2350

### **Northeast Regional Office**

33 Gregory St, Middleton, MA 01949

p: (978) 716-1100 f: (978) 646-2342



## **Massachusetts Disabled Persons Protection Commission (DPPC)**

300 Granite St, Ste 404, Braintree, MA 02184

p: (617) 727-6465 f: (617) 727-6469

TTY: (888) 822-0350

[www.mass.gov/dppc](http://www.mass.gov/dppc)

Protects adults with disabilities from the abusive acts or omissions of their caregivers through investigation oversight, public awareness, and prevention.



## **Massachusetts Office for Refugees and Immigrants (ORI)**

600 Washington St, 4th Fl, Boston, MA 02111 p: (617) 727-7888 f: (617) 727-1822

TTY: (617) 727-8147

[www.mass.gov/ori](http://www.mass.gov/ori)

Provides assistance with the citizenship process and promotes participation of refugees and immigrants as self-sufficient citizens.



## **Massachusetts Office of the Attorney General**

1 Ashburton Pl, Boston, MA 02108

p: (617) 727-2200

TTY: (617) 727-4765

[www.mass.gov/ago](http://www.mass.gov/ago)

The Attorney General is the chief lawyer and law enforcement officer of Massachusetts. The office acts as an advocate and resource for the Commonwealth and its residents and operates a number of divisions which respond to individual concerns, including the Victim Witness and Assistance Division (VWAD), which provides crisis assessment to victims and witnesses to facilitate recovery from victimization. Other divisions/hotlines include:

Civil Rights Division (CRD) hotline: (800) 994-3228 [www.eform.ago.state.ma.us/crd](http://www.eform.ago.state.ma.us/crd)

Any resident who has witnessed or experienced bias-motivated threats, harassment, or violence may call the special hotline for hate crimes and other bias-motivated conduct or fill out a complaint at the

CRD link. Anyone who feels s/he is a victim of discrimination (in such areas as housing, employment, and public accommodations) can also file a complaint with this division.

Consumer Advocacy & Response Division (CARD) hotline: (617) 727-8400 (consumer complaints)  
[www.eform.ago.state.ma.us/piac](http://www.eform.ago.state.ma.us/piac)

### **HomeCorps**

hotline: (617) 573-5333

Provides advocacy to distressed borrowers facing foreclosure.

### **Insurance & Health Care Consumer**

p: (888) 830-6277

Assists with questions related to health care, health insurance, and/or automobile or motorcycle insurance.



## **Massachusetts Office of the Child Advocate (OCA)**

1 Ashburton Pl, 5th Fl, Boston, MA 02108

p: (617) 979-8374 f: (617) 979-8379

toll-free: (866) 790-3690

e: [childadvocate@state.ma.us](mailto:childadvocate@state.ma.us) [www.mass.gov/childadvocate](http://www.mass.gov/childadvocate)

OCA works on behalf of children who receive services from a state agency. Provides help finding services or resources and can answer questions about a state agency. If it is an emergency or you suspect a child is being neglected or abused, call DCF.



## **Massachusetts Rehabilitation Commission (MRC)**

600 Washington St, Boston, MA 02111

p: (617) 204-3600 f: (617) 727-1354

Voice/TDD: (800) 245-6543

[www.mass.gov/mrc](http://www.mass.gov/mrc)

Eligibility restrictions: individuals with a disability Ages: 14+ yrs Provides comprehensive services to maximize quality of life and economic self-sufficiency for individuals with a disability including supported living, transition to adulthood, vocational, and home care assistance programs as well as vehicle and housing modifications.

### **Lawrence Area Office**

280 Merrimack St, 3rd Fl, Lawrence, MA 01843 p/TTY: (978) 685-1731 f: (978) 975-9907

Serves Amesbury, Andover, Boxford, Georgetown, Groveland, Haverhill, Lawrence, Merrimac, Methuen, Newbury, Newburyport, North Andover, Rowley, Salisbury, and West Newbury

### **Salem Area Office**

45 Congress St, Ste 4120, Salem, MA 01970

p: (978) 745-8085 f: (978) 745-9063

Serves Ipswich and Topsfield

### **MassHealth**

p: (800) 841-2900 (Member Customer Service Center) p: (888) 665-9993 (Enrollment Center)

TTY: (800) 497-4648

[www.mass.gov/masshealth](http://www.mass.gov/masshealth)

Eligibility restrictions: vary depending on health plan Ages: all

Health insurance program to help low-income and disabled individuals obtain health care.















## **Autism Speaks**

[www.autismspeaks.org/resource-guide/state/MA](http://www.autismspeaks.org/resource-guide/state/MA)

A guide to resources for youth with autism and their families.



## **Blue Skies Wellness, Inc**

p: (888) 336-1411

[www.blueskieswellnessinc.org](http://www.blueskieswellnessinc.org)

Confidential anti-bullying help for kids 13 years old and older.



## **Boston Area Rape Crisis Center (BARCC)**

p: (800) 841-8371

TTY: (800) 688-4889

[www.barcc.org](http://www.barcc.org)

Statewide hotline in English and Spanish to assist survivors of rape.



## **Boston Medical Center Opiate Treatment Program**

p: (866) 414-6926

Treatment and referrals hotline for information on opiate and heroin treatment for adolescents and adults.



## **Child at Risk Hotline (DCF 24 Hour Hotline)**

toll-free: (800) 792-5200 Hours: 24/7

Free, after-hours emergency response system providing crisis intervention, information, or referrals for children in danger.



## **Child Trauma Training Center UMass Medical School**

toll-free: (855) LINK-KID (546-5543)

[www.umassmed.edu/cttc](http://www.umassmed.edu/cttc)

Ages: 0–22

Provides a centralized referral system to connect youth who may benefit from evidence-based treatments (EBTs) for trauma with providers trained in these treatments.



## **Children's Law Center of Massachusetts**

p: (781) 581-1977

toll-free: (888) KIDLAW8 or (888) 543-5298

[www.clcm.org](http://www.clcm.org)

Provides information, referrals, and/or legal advice on matters that impact children including access to education, special education, immigration, and child welfare. Website has community education and resource materials.





## **GLBTQ Domestic Violence Project**

helpline: (617) 779-2127 (sexual assault helpline) [www.glbtdvp.org](http://www.glbtdvp.org)

Provides free and confidential support and services for GLBTQ survivors of domestic and sexual violence.



## **Greater Boston Parents, Families, and Friends of Lesbians and Gays (PFLAG)**

p: (866) 427-3524

[www.gbpflag.org](http://www.gbpflag.org)

Helpline for parents and families of LGBT children.



## **Healing Abuse Working for Change (HAWC)**

p: (800) 547-1649

TTY: (978) 744-1818

[www.hawcdv.org](http://www.hawcdv.org) Hours: 24/7 Abuse hotline.



## **Health Care for All**

p: (800) 272-4232

[www.hcfama.org](http://www.hcfama.org)

Provides information about health care and assists at-risk individuals obtain health insurance coverage.



## **In The Rooms**

[www.intherooms.com](http://www.intherooms.com)

Provides an online community with meetings and supports groups for people who are in recovery or struggling with addiction as well as for their family and friends.



## **INDEX**

p: (800) 642-0249

[www.disabilityinfo.org](http://www.disabilityinfo.org)

A site that offers a searchable database, multiple resources, guides, and information for those who have disabilities in Massachusetts.



## **Jane Doe Inc**

e: [info@janedoe.org](mailto:info@janedoe.org) [www.janedoe.org](http://www.janedoe.org)

Provides information on its website regarding services for domestic violence survivors.



## **Jeanne Geiger Crisis Center**

p: (978) 465-0999

hotline: (978) 388-1888 [www.jeannegeigercrisiscenter.org](http://www.jeannegeigercrisiscenter.org) Hours: 24/7

Hotline provides crisis intervention for victims of domestic violence.



Informs families with children with special health needs about public programs and benefits for which they may be eligible and about the state and community-based resources that may provide assistance.



## **Massachusetts Legal Aid Websites Project**

[www.masslegalhelp.org](http://www.masslegalhelp.org)

Legal information written by lawyers for non-lawyers on a variety of topics.



## **Massachusetts Office for Victim Assistance (MOVA)**

p: (617) 586-1340

e: [mov@state.ma.us](mailto:mov@state.ma.us) [www.mass.gov/mova](http://www.mass.gov/mova) Offers a variety of resources for victims of crime.



## **Massachusetts Office of the Attorney General**

p: (617) 727-2200

TTY: (617) 727-4765

[www.mass.gov/ago](http://www.mass.gov/ago)

Helpline and online assistance includes:

### **Civil Rights Division (CRD)**

hotline: (800) 994-3228 [www.eform.ago.state.ma.us/crd](http://www.eform.ago.state.ma.us/crd)

Any resident who has witnessed or experienced bias-motivated threats, harassment, or violence may call the special hotline for hate crimes and other bias-motivated conduct or fill out a complaint at the CRD link. Anyone who feels s/he is a victim of discrimination (in such areas as housing, employment, and public accommodations) can also file a complaint with this division.

Consumer Advocacy & Response Division (CARD) hotline: (617) 727-8400 (consumer complaints)

[www.eform.ago.state.ma.us/piac](http://www.eform.ago.state.ma.us/piac)

### **HomeCorps**

hotline: (617) 573-5333

Provides advocacy to distressed borrowers facing foreclosure.

### **Insurance & Health Care Consumer**

p: (888) 830-6277

Assists with questions related to health care, health insurance, and/or automobile or motorcycle insurance.

### **Victim Witness and Assistance Division (VWAD)**

p: (617) 727-2200

Provides crisis assessment to victims and witnesses to facilitate recovery from victimization.



## **Massachusetts Substance Abuse Information and Education Helpline**

p: (800) 327-5050

e: [helpline@hria.org](mailto:helpline@hria.org) [www.helpline-online.com](http://www.helpline-online.com) Provides referrals and information about treatment and prevention services throughout Massachusetts.







## **Parents Helping Parents of Massachusetts**

### **Parental Stress Line**

p: (800) 632-8188

[www.parentshelpingparents.org](http://www.parentshelpingparents.org) Hours: 24/7

Confidential helpline provides support for parents.



## **Project Bread Food Source Hotline**

p: (800) 645-8333

[www.projectbread.org/get-help/foodsource-hotline.html](http://www.projectbread.org/get-help/foodsource-hotline.html)

60+ languages

Hotline to refer callers to emergency food resources in their community.



## **Safelink**

(operated by Casa Myrna) p: (877) 785-2020

TTY: (877) 521-2601

[www.casamyrna.org](http://www.casamyrna.org) Hours: 24/7

Multilingual statewide hotline to assist victims of domestic abuse.



## **Social Work Therapy Referral Service**

p: (617) 720-2828

toll-free: (800) 242-9794

e: [info@therapymatcher.org](mailto:info@therapymatcher.org) [www.therapymatcher.org](http://www.therapymatcher.org)

Free, confidential referral service that provides counseling referrals matched for location, specialty, and insurance or fee requirements.



## **Special Needs Advocacy Network, Inc (SPAN)**

e: [info@spanmass.org](mailto:info@spanmass.org) [www.spanmass.org](http://www.spanmass.org)

Provides a directory of special education advocates and attorneys and information to help empower parents to advocate for the needs of their disabled children



## **Substance Abuse and Mental Health Services**

### **Administration (SAMHSA) National Helpline**

p: (800) 662-HELP (4357)

[www.samhsa.gov](http://www.samhsa.gov) Hours: 24/7

Confidential, free helpline available in Spanish and English. Provides referrals to local supports.

Callers can also order free publications and other information.



## **Wellplace**

p: (800) 821-4357

[www.wellplace.com/24-hour-addiction-mental-health-chat.asp](http://www.wellplace.com/24-hour-addiction-mental-health-chat.asp) Hours: 24/7

Confidential, free helpline available to help support with substance abuse or mental health. Also offers online instant messaging with a counselor.



**YWCA of Greater Lawrence**

p: (800) 509-9922

Spanish: (800) 223-5001

Hours: 24/7

Hotline for sexual assault survivors.

**Acknowledgements**

Special thanks to Arisbert Perez who drew the accompanying artwork.