



Artificial Intelligence and Education in 2024

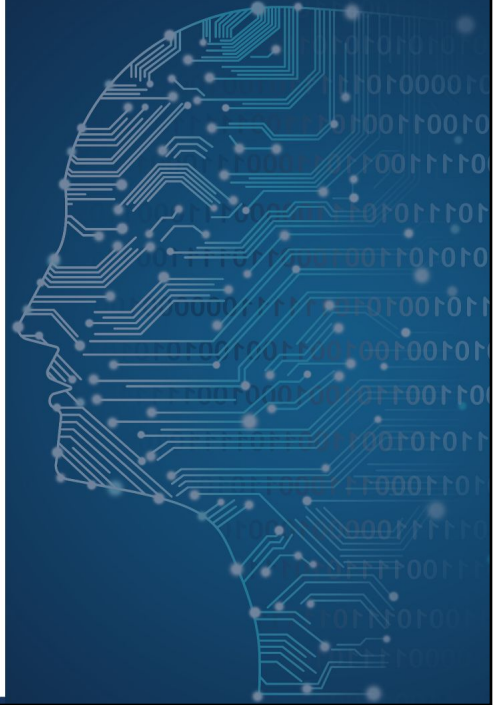
November 14, 2024

Tiffany Carson

Director, School and District Support

Lauren Aranguren

Director, Equitable Learning Systems



1

What is
Artificial
Intelligence?

2

AI in
Education

3

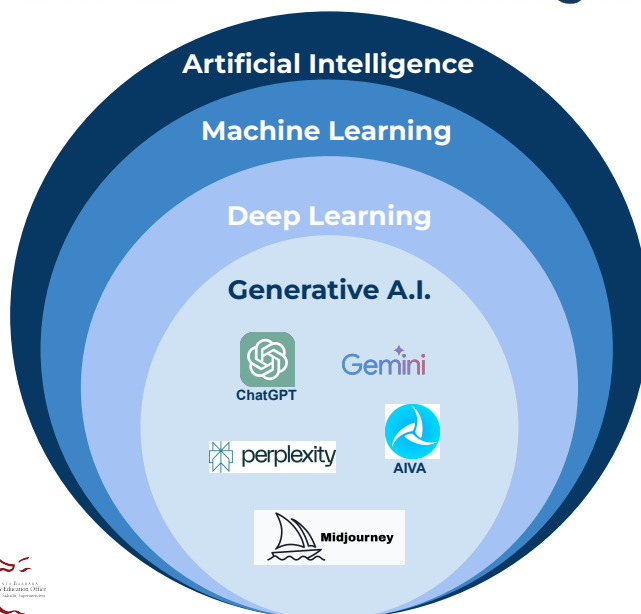
Support for
Educators and
Students in
the Era of AI



1

What is Artificial Intelligence?

What is Artificial Intelligence?



Artificial Intelligence: The ability of computers and machines to perform tasks that typically require human intelligence, such as learning, decision-making, and problem-solving.

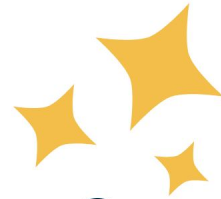
Machine Learning: A type of AI that uses algorithms and data to learn patterns and make decisions without being specifically programmed for each task.

Deep Learning: A type of machine learning where computers use layers of neural networks (like a brain) to recognize patterns and make decisions from large amounts of data

Generative Artificial Intelligence: A type of artificial intelligence that creates *new content*, like text, images, or music, based on patterns it has learned from existing data.



Find vs generate ?



Generative AI

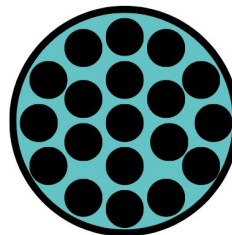
Simplified



A **datapoint** can come in the form of text, observations, figures, images, numbers, graphs, or symbols.



Datapoint



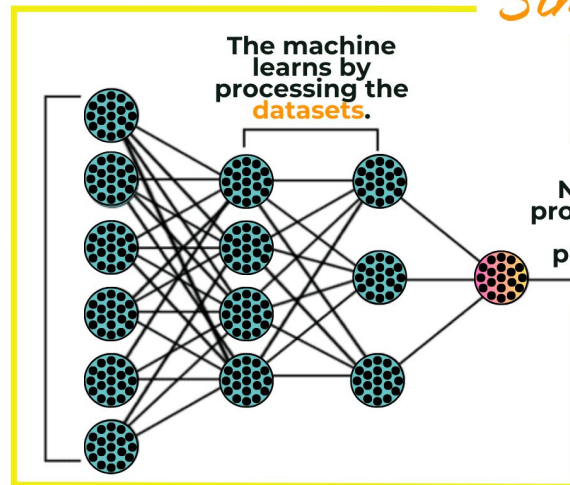
Dataset

A **dataset** is a combination of datapoints.

Generative AI

Simplified

Datasets are entered into the machine by humans.



The machine learns by processing the datasets.

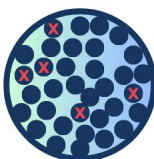
New information is produced based on the combined and processed datasets.

Neural Network

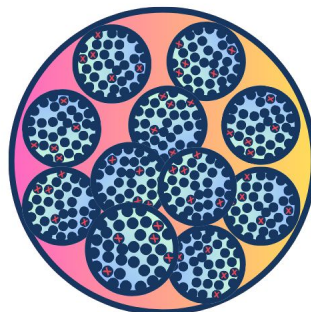
Machines are only as capable as the data they are trained on.



Data



Dataset



Generated Information

If the DATA is inaccurate, biased, or problematic,

Then the A.I. is inaccurate, biased, or problematic.

Let's experience ChatGPT together.



ChatGPT

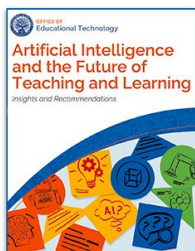
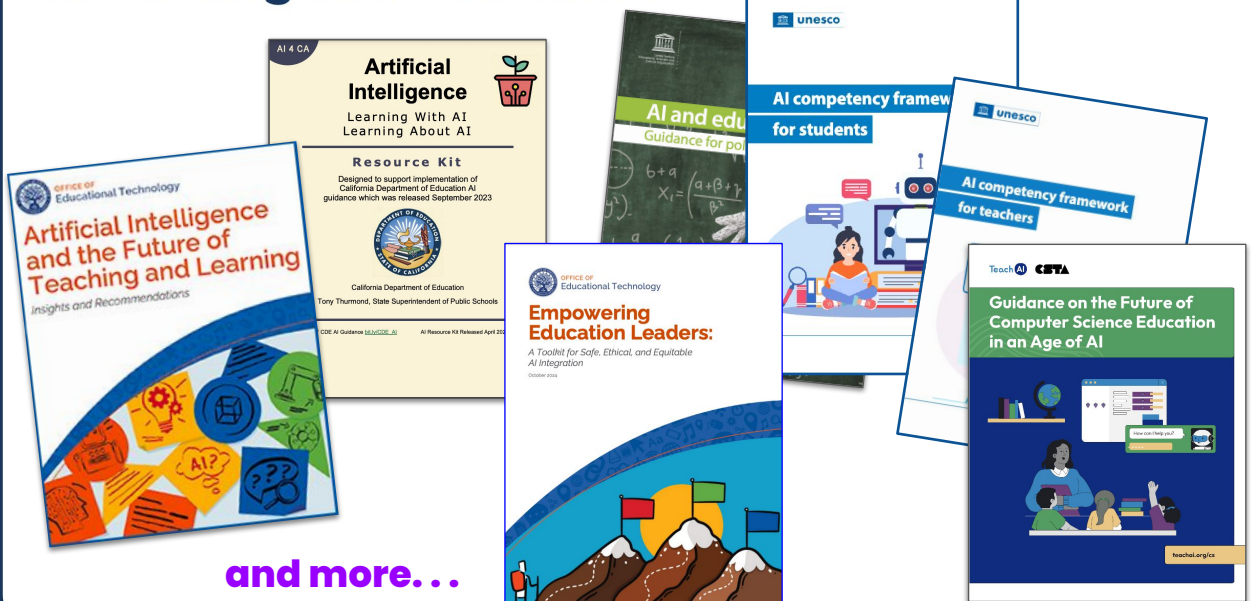
chatgpt.com

2

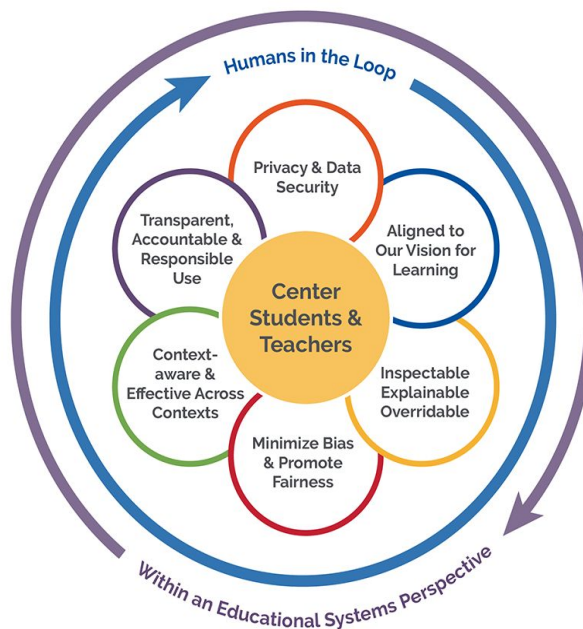
Artificial Intelligence in Education



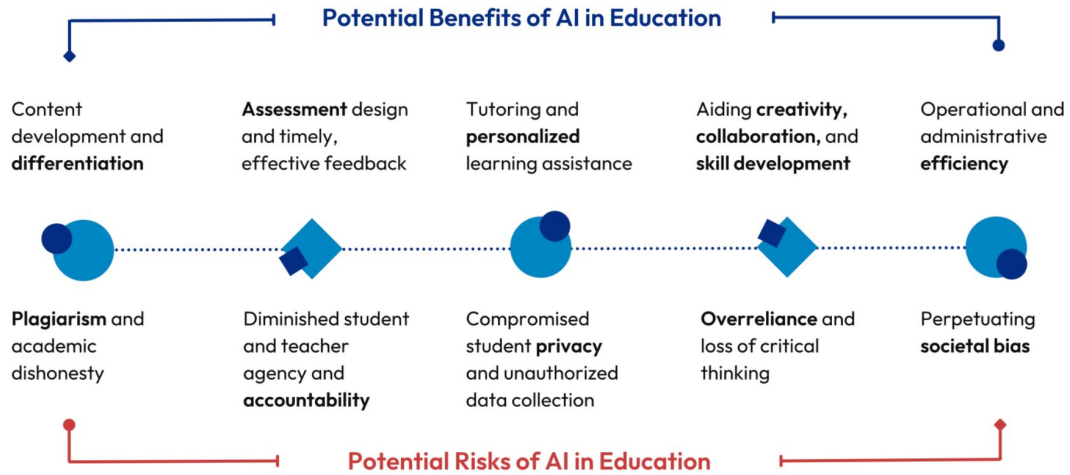
Grounding and Guidance



From the US Department of Education, Office of Educational Technology
[“Artificial Intelligence and the Future of Teaching and Learning”](#)

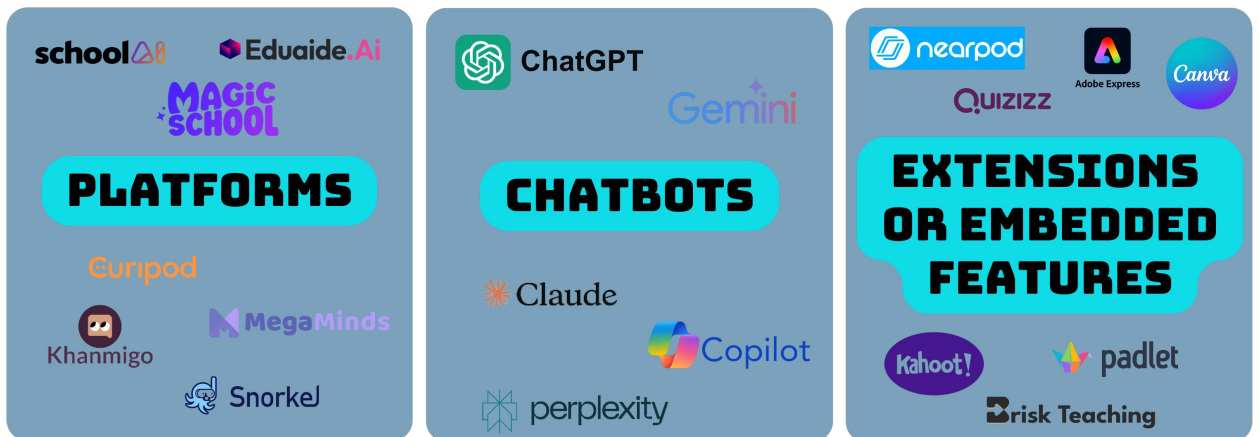


Tensions with A.I. and education



Teach AI

A.I. Tools Most Commonly Used In Schools



(These are only a representative few. There are many more, and many more to come. . .)

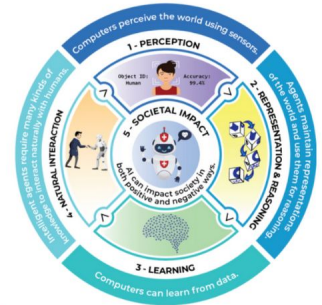
Computer Science Standards for California Public Schools

Kindergarten through Grade Twelve

Development begins in 2016
SBE adopts August 2018



OpenAI releases ChatGPT 3.5
November 2022



AI 4 K12 development
launches in 2018
CSTA / AAAI partnership



Why is computer science still crucial for students?



Adapted from Teach AI CSTA

AI is not magic. It needs human expertise and guidance.

AI is not perfect. It needs human oversight.

AI will not replace the need for computer scientists.

AI needs human creativity and domain expertise.

AI can code, but there is more to computer science than code.



Adapted from  

A.I. Competency Framework for Students



Aspects	Progression		
	Acquire	Deepen	Create
Human-centered mindset	Human agency	Human accountability	Citizenship in the era of AI
Ethics of AI	Embodied ethics	Safe and responsible use	Ethics by design
AI techniques and applications	AI foundations	Application skills	Creating AI tools
AI system design	Problem scoping	Architecture design	Iteration and feedback loops
AI for learning	AI enabling student learning	AI to enhance learner curiosity	AI to support learner agency

Adapted from the [AI Competency Framework for Students](#), unesco, September 4, 2024



CA Assembly Bill 2976



... **incorporate Artificial Intelligence (AI) literacy** content into future **curricular frameworks.**

(Mathematics, Science, and History-social Science)

... **include AI literacy** in its criteria for evaluation when the state board next adopts **instructional materials.**

(Mathematics, Science, and History-social Science)

... **define “AI literacy”** for these purposes as the knowledge, skills, and attitudes associated with how artificial intelligence works, including its principles, concepts, and applications, as well as how to use artificial intelligence, including its limitations, implications, and ethical considerations.

Approved by Governor September 29, 2024

3

Support for Educators in the Era of A.I.



A.I. Competency Framework for Teachers



Aspects	Progression		
	Acquire	Deepen	Create
Human-centered mindset	Human agency	Human accountability	Social Responsibility
Ethics of AI	Ethical principles	Safe and responsible use	Co-creating ethical rules
AI foundations and applications	Basic AI techniques and applications	Application skills	Creating with AI
AI pedagogy	AI-assisted teaching	AI-pedagogy integration	AI-enhanced pedagogical transformation
AI for professional development	AI enabling lifelong professional learning	AI to enhance organizational learning	AI to support professional transformation

Adapted from the [AI Competency Framework for Teachers](#), unesco, September 4, 2024



Artificial Intelligence and SBCEO



Exploration Challenges

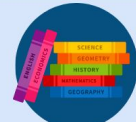


sbceo.org/AI

Workshops for Educators



A.I. in our Communities



Engaging in our own learning



Key Take-Aways



- The emergence and rapid development of generative AI is both a **catalyst and an opportunity** for transforming teaching and learning.
- AI **can enhance** teaching and learning but must be **approached with caution** to avoid risks.
- Beyond “humans in the loop,” **we must center human intelligence and creativity in the age of AI**. It is crucial that our students are positioned to be not just consumers, but creators of AI and future technologies.
- Educators are grappling with how to create the conditions so that **student potential** is not limited or boxed by their interactions with A.I. , but **amplified by their interactions with A.I.**
- Decisions we are making now will impact future generations. And– **Everybody is doing the best they can to figure it out.**



Questions?

Thank you!

Visit us at sbceo.org/AI

Tiffany Carson

Director, School and District Support

Lauren Aranguren

Director, Equitable Learning Systems

