

Maypearl ISD
Annual Title 1 Meeting
2024-2025

Title I, Part A- Parent & Family Engagement



Purpose of Meeting



The Elementary and Secondary School Act, Title I Part A, requires that each Title I school hold an annual meeting for the parents and families whose children receive Title I services.

During today's meeting we will:

1. Educate you on what the Title I Program is
2. Inform you of the school's participation in Title I, Part A and how schools are identified
3. Explain the requirements of Title I, Part A
4. Explain your rights and opportunities as parents and families to be involved in your child's learning and achievement

What is Title I?

Title I, Part A – Improving Basic Programs Operated By Local Educational Agencies—of the Elementary and Secondary Education Act (ESEA), as amended by the Every Student Succeeds Act (ESSA) of 2015, provides supplemental funding to state and local educational agencies to acquire additional education resources at schools serving high concentrations of students from low-income homes. These resources are used to improve the quality of education programs and ensure students from low-income families have opportunities to meet challenging state assessments.

Title I, Part A schools implement either a Schoolwide program or a Targeted Assistance program. Both Title I, Part A models — Schoolwide and Targeted Assistance — use evidence-based methods and instructional strategies.



How is a Campus Identified as Title I?

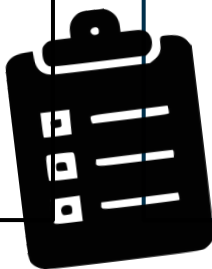
A campus is classified as Title I based on the percentage of free/reduced meal qualifications. The percentage must be at least 40% of students on a campus receiving free/reduced meals.

MISD Title I Schools:

Maypearl Primary School

Lorene Smith Kirkpatrick Elementary

Maypearl Middle School



More About Title I

The LEA Title I Plan addresses how the LEA will use Title I, Part A funds within the school district. Typically, in Texas, requirements of the Title I Plan are incorporated into the District Improvement Plan (DIP) and the Campus Improvement Plan (CIP).

Topics include:

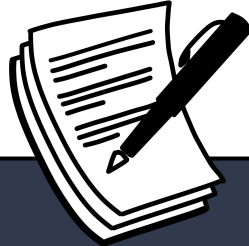
- High-quality student academic assessments
- Supplemental services to assist struggling students
- Coordination and integration of federal funds and programs
- Strategies to implement effective parent and family engagement
- Title I, Part A parents have the right to be involved in the development of this plan



Campus Improvement Plan:

The school's Campus Improvement Plan (CIP) includes:

- A needs assessment and summary of data
- Goals, objectives, and strategies to address the academic needs of students
- Professional development needs
- Coordination of resources and services
- Identification of Title I, Part A funds and expenditures
- Strategies from the school's parental involvement policy
- Title I parents have the right to be involved in the development of the CIP



Parent Involvement Policy:

The Parent Involvement Policy (PIP) addresses how the school will implement the parent and family engagement program. The policy includes:

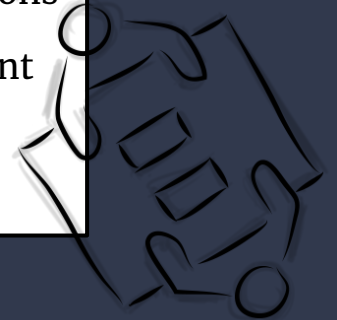
- Convene an annual meeting
- Provide a flexible number of meetings
- Involve parents in an organized, ongoing, and timely way, in the planning, review, and improvement of the parent and family engagement program
- Provide timely information about parent and family engagement activities
- Provide information to parents about curriculum and assessment
- If requested, provide additional meetings with parents to discuss decisions for the education of their child
- Title I parents have the right to be involved in the development of the school policy



School-Parent Compact:

The School-Parent Compact is a written agreement...

- That addresses high-quality curriculum and instruction
- That describes how parents and families, school staff, and students share the responsibility for improved student academic achievement
- That stresses the importance of frequent communication between school and home, and the value of parent-teacher conferences (required in elementary schools)
- That affirms the importance of parents and families in decisions relating to the education of their children
- Title I parents have the right to be involved in the development of the school-parent compact



Teacher Qualifications:

Title I campuses are required to:

- Allow parents to request information about the qualifications of their child's teachers

Schools are required to notify parents that they have the right to request information regarding the qualifications of their child's teacher, Section 1112 (e) (1) (A)

Parents must follow school procedures for requesting this information

Schools are required to notify parents that the student has been assigned, or has been taught for 4 or more consecutive weeks by, a teacher who does not meet applicable state certification requirements at the grade level and subject area in which the teacher has been assigned, Section 1112 (e) (1) (B)



MISD Curriculum:

Maypearl ISD strives to implement a quality curriculum that provides students with a foundation of learning that includes vertical and horizontal alignment and guarantees that students are taught the required Texas Essential Knowledge and Skills.

Maypearl ISD uses the TEKS Resource System Curriculum (TEKS/RS) in the four core content areas K-12. A teacher can access the online curriculum site at www.teksresourcesystem.net.

As required by State law in the Texas Administrative Code and Texas Education Code, Maypearl ISD adheres to the Texas Essential Knowledge and Skills (TEKS) as the standards which determine what students should know and be able to do in each course and subject.



MISD Assessment Components:



| COMPONENT | DISTRICT EXPECTATION |
|---|--|
| Curriculum-Based Assessments: The assessment item bank that is aligned to the units. The item bank has been designed so that districts have the opportunity to build an assessment that is best suited for their students. | In grades 2-12, Curriculum-Based Assessments shall be given at the end of each grading period in all core subjects. |
| Released STAAR/EOC Benchmarks/Semester Exams | Released STAAR/EOC benchmarks given in any grading period can replace Unit Assessment(s). Grades 9-12 will give semester exams. |
| <p>Performance Assessments: Assessment tasks that align with the learning objectives of the unit. These assessments are found in the IFD or TExGuides.</p> <p>Data Collection: Eduphoria AWARE</p> <p>NWEA MAP Growth: NWEA provides robust norms for achievement and growth over time. Amplify mClass will be used for K reading. MAP Reading Fluency will be used for students entering 7th grade who did not pass the 6th Grade Reading STAAR.</p> | <p>At least one PA must be completed within each grading period using the provided rubric for K-8 core subjects and 9-12 EOC subjects.</p> <p>All unit assessment data must be completed in AWARE. Data will be used to strengthen curriculum and instruction. Students shall be assessed three times per year in Reading and Math in grades K - 8.</p> <p>Students shall be assessed three times per year in Reading and Math in grades K - 12.</p> |
| CLI Engage Circle: An assessment tool to assess school readiness learning areas. | Students shall be assessed three times per year in all learning areas required by TEA to meet the criteria for a High Quality Pre-Kindergarten Program. |
| STAAR/EOC Analysis: Analyzes previous STAAR/EOC Assessments. The documents also provided rationale for student error and misconceptions. | Teachers shall analyze their STAAR/EOC data and use this information to guide instruction. |

Who to Contact:



Maypearl Primary School:

Kristi Gonzales, Principal-972-435-1099

Vicki Coonrod, Assistant Principal-972-435-1099

Rene Griffin, Nurse-972-435-1099

Lorene Smith Kirkpatrick Elementary:

Brandi Beckham, Principal-972-435-1010

Amanda Stinson, Counselor-92-435-1010

Sarah Tucker, Nurse-972-435-1010

Maypearl Middle School:

Andria Bone, Principal-972-435-1015

Chelsea Hoard, Counselor-972-435-1015

Shannon Ward, Nurse-972-435-1015

MISD Food Service Director: Michael Mitchell, 972-435-1041

MISD Transportation Director: Jim Calabrese, 972-435-7000

Through effective communication with parents, teachers can have the greatest impact on their day-to-day success with students. With parents on their side, teachers can more effectively manage most academic and behavioral issues that arise. When the most important adults in a child's life are working together, students benefit enormously.

-Lee and Marleen Canter



Thank you for coming!