

## Tomahawk Elementary

### School

6301 W 78th St. Shawnee Mission  
KS, 66204

# CONSTRUCTION UPDATE 11/8/2024

**OWNER:** Shawnee Mission School District

**ARCHITECT:** DLR Group

**CM:** JE DUNN

### CURRENT PROGRESS

- Level 1 Drywall Install
- level 2 In-Wall MEP
- Exterior Glazing Install
- RTU Installation
- Art/makers Roof Install

### 2 WEEK LOOK AHEAD

- Drywall Finishing level 1
- Temporary heat will be turned on
- In-Wall MEP Install Level 2
- Roof Completion

## SHAWNEE MISSION SCHOOL DISTRICT TOMAHAWK ELEMENTARY SCHOOL OPENING FALL 2025



SHAWNEE MISSION  
SCHOOL DISTRICT



DLR Group  
Architecture | Engineering | Planning | Interior



## SMSD Tomahawk Elementary School



## Tomahawk Elementary School

6301 W 78th St. Shawnee Mission KS, 66204

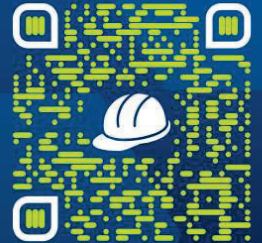


First Floor Drywall Install



# BUILDING THE FUTURE

A K-12 CONSTRUCTION EDUCATION INITIATIVE OF JE DUNN



[BUILDINGTHEFUTURE.JEDUNN.COM](http://BUILDINGTHEFUTURE.JEDUNN.COM)



Exterior Glazing & Panel Install



## SMDS Tomahawk Elementary School





Tomahawk Elementary School  
6301 W 78th St. Shawnee Mission KS,  
66204

**SAFETY**  
**EVERYONE.**  
**EVERYWHERE.**  
**ALL THE TIME.**



RTU Installation



Second Floor Interior MEP



**SMSD Tomahawk Elementary School**



## Tomahawk Elementary

### School

6301 W 78th St. Shawnee Mission  
KS, 66204

# CONSTRUCTION UPDATE 10/15/2024

**OWNER:** Shawnee Mission School  
District

**ARCHITECT:** DLR Group

**CM:** JE DUNN

### CURRENT PROGRESS

- Second Floor Interior Framing
- Area B Roof Install
- Main Entrance Brick Install
- First Floor In-wall Rough-In
- First Floor Window Install

### 2 WEEK LOOK AHEAD

- Roof Will Be Completed
- First Floor Interior Drywall
- Second Floor Interior Rough-In
- Kitchen Area Brick Install
- Exterior Metal Panel Install

SHAWNEE MISSION SCHOOL DISTRICT  
**TOMAHAWK ELEMENTARY SCHOOL**  
OPENING FALL 2025



SHAWNEE MISSION  
SCHOOL DISTRICT



DLR Group  
Architectural | Engineering | Planning | Interior



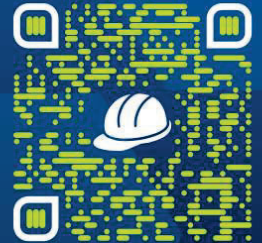
# SMSD Tomahawk Elementary School



**Tomahawk Elementary School**  
6301 W 78th St. Shawnee Mission KS, 66204



First Floor Interior Framing



[BUILDINGTHEFUTURE.JEDUNN.COM](http://BUILDINGTHEFUTURE.JEDUNN.COM)



Exterior Brick Install Progress



**SMSD Tomahawk Elementary School**





**Tomahawk Elementary School**  
6301 W 78th St. Shawnee Mission KS,  
66204

**SAFETY**  
**EVERYONE.**  
**EVERYWHERE.**  
**ALL THE TIME.**



Second Floor Interior Framing



Roof Install Progress



**SMSD Tomahawk Elementary School**



## Tomahawk Elementary

### School

6301 W 78th St. Shawnee Mission  
KS, 66204

## CONSTRUCTION UPDATE 9/18/2024

**OWNER:** Shawnee Mission School District

**ARCHITECT:** DLR Group

**CM:** JE DUNN

### CURRENT PROGRESS

- First Floor Interior Framing
- South Parking Lot Asphalt Install
- First Floor Overhead MEP
- Exterior Brick Install
- Area A Roof Install

### 2 WEEK LOOK AHEAD

- Area B Roof Install
- Exterior Metal Panel Install
- Exterior Brick Install
- First Floor In-Wall Rough-In
- Second Floor Overhead MEP

### SHAWNEE MISSION SCHOOL DISTRICT TOMAHAWK ELEMENTARY SCHOOL OPENING FALL 2025



SHAWNEE MISSION  
SCHOOL DISTRICT



DLR Group  
Architectural Engineering Planning Interiors



## SMSD Tomahawk Elementary School



**Tomahawk Elementary School**  
6301 W 78th St. Shawnee Mission KS, 66204

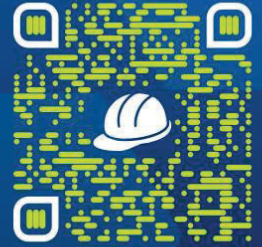


Area A Brick Install

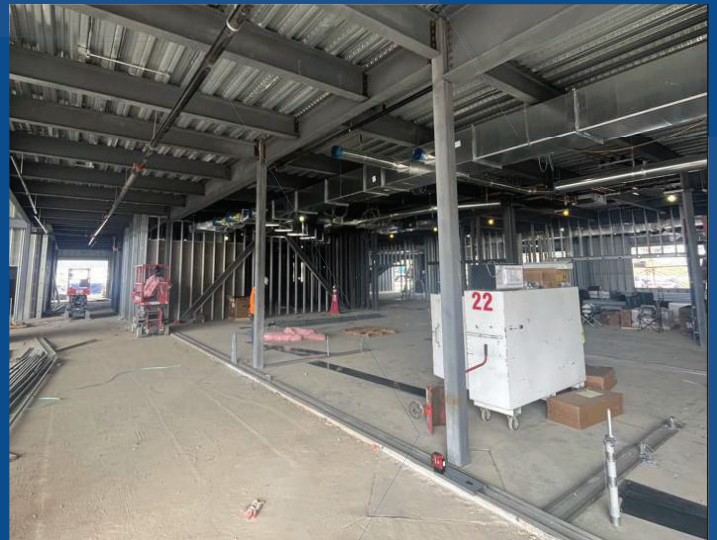


**BUILDING  
THE FUTURE**

A K-12 CONSTRUCTION EDUCATION INITIATIVE OF JE DUNN



[BUILDINGTHEFUTURE.JEDUNN.COM](http://BUILDINGTHEFUTURE.JEDUNN.COM)



Interior Framing Install



**SMSD Tomahawk Elementary School**





Tomahawk Elementary School  
6301 W 78th St. Shawnee Mission KS,  
66204



South Lot Asphalt Install

**SAFETY**  
**EVERYONE.**  
**EVERYWHERE.**  
**ALL THE TIME.**



Area A Roof Install



**SMSD Tomahawk Elementary School**



**Tomahawk Elementary  
School**  
6301 W 78th St. Shawnee Mission  
KS, 66204

## CONSTRUCTION UPDATE 8/23/2024

**OWNER:** Shawnee Mission School  
District

**ARCHITECT:** DLR Group

**CM:** JE DUNN

### CURRENT PROGRESS

- Area B Exterior Stud Framing/Sheathing
- Area A Overhead MEP
- Area A Weatherproofing
- Gym Roof Install
- Gym Masonry Wall Install

### 2 WEEK LOOK AHEAD

- Area A/B Roof Install
- Area A Interior Framing
- Area B Overhead MEP
- Area B Weatherproofing
- Exterior Masonry Install

SHAWNEE MISSION SCHOOL DISTRICT  
**TOMAHAWK ELEMENTARY SCHOOL**  
OPENING FALL 2025



SHAWNEE MISSION  
SCHOOL DISTRICT



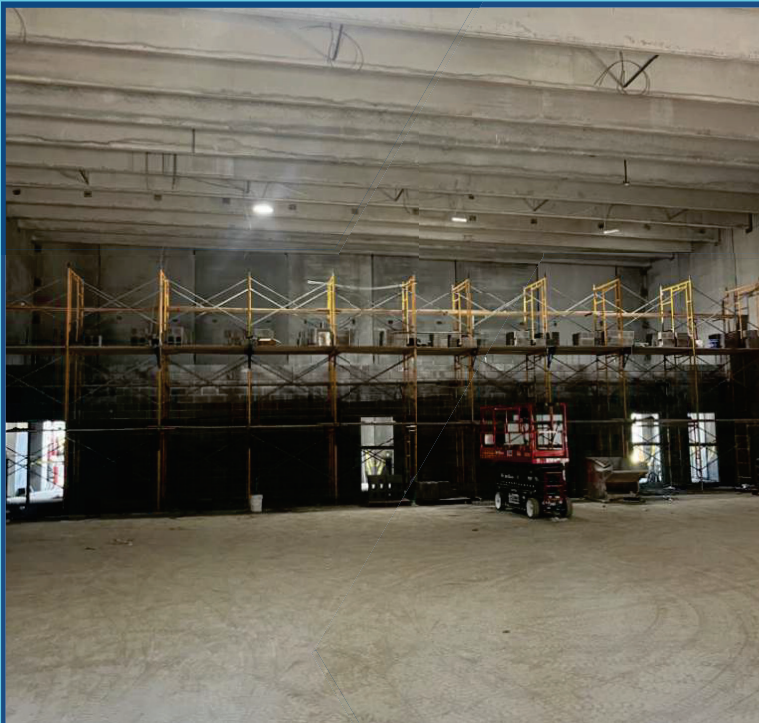
DLR Group  
Architectural Engineering Planning Interiors



# SMSD Tomahawk Elementary School



**Tomahawk Elementary School**  
6301 W 78th St. Shawnee Mission KS, 66204

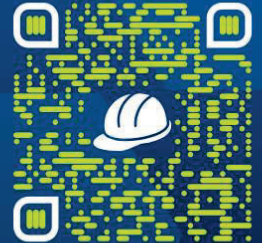


Gym CMU Wall Install



**BUILDING  
THE FUTURE**

A K-12 CONSTRUCTION EDUCATION INITIATIVE OF JE DUNN



[BUILDINGTHEFUTURE.JEDUNN.COM](http://BUILDINGTHEFUTURE.JEDUNN.COM)



South Radius Wall Progress



**SMSD Tomahawk Elementary School**





Tomahawk Elementary School  
6301 W 78th St. Shawnee Mission KS,  
66204



Overhead MEP Progress

**SAFETY**  
**EVERYONE.**  
**EVERYWHERE.**  
**ALL THE TIME.**



Gym Roof Install



**SMSD Tomahawk Elementary School**



## Tomahawk Elementary

### School

6301 W 78th St. Shawnee Mission  
KS, 66204

## CONSTRUCTION UPDATE 7/05/2024

**OWNER:** Shawnee Mission School District

**ARCHITECT:** DLR Group

**CM:** JE DUNN

### CURRENT PROGRESS

- Area A Structural Steel Detailing
- Slab On Grade Concrete Complete
- Light Pole Base Layout
- Area B Structural Steel Installation

### 2 WEEK LOOK AHEAD

- Area B Structural Steel Detailing
- Area A Slab On Metal Deck Concrete Floor
- Exterior Framing

SHAWNEE MISSION SCHOOL DISTRICT  
**TOMAHAWK ELEMENTARY SCHOOL**  
OPENING FALL 2025



# SMSD Tomahawk Elementary School

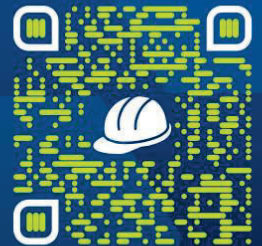




**Tomahawk Elementary School**  
6301 W 78th St. Shawnee Mission KS, 66204



Area A Structural Steel Detailing



[BUILDINGTHEFUTURE.JEDUNN.COM](http://BUILDINGTHEFUTURE.JEDUNN.COM)



Completed Concrete Slab



**SMSD Tomahawk Elementary School**





Tomahawk Elementary School  
6301 W 78th St. Shawnee Mission KS,  
66204

**SAFETY**  
**EVERYONE.**  
**EVERYWHERE.**  
**ALL THE TIME.**



Kitchen Structural Steel Erection



West Side Site View



**SMSD Tomahawk Elementary School**



## Tomahawk Elementary

### School

6301 W 78th St. Shawnee Mission  
KS, 66204

## CONSTRUCTION UPDATE 6/21/2024

**OWNER:** Shawnee Mission School  
District

**ARCHITECT:** DLR Group

**CM:** JE DUNN

### CURRENT PROGRESS

- Area A Structural Steel Erection
- Kitchen/Gym Slab Install
- Underground MEP Completed

### 2 WEEK LOOK AHEAD

- Area A Structural Steel Detailing
- Slab On Grade Concrete Complete
- Light Pole Bases Install

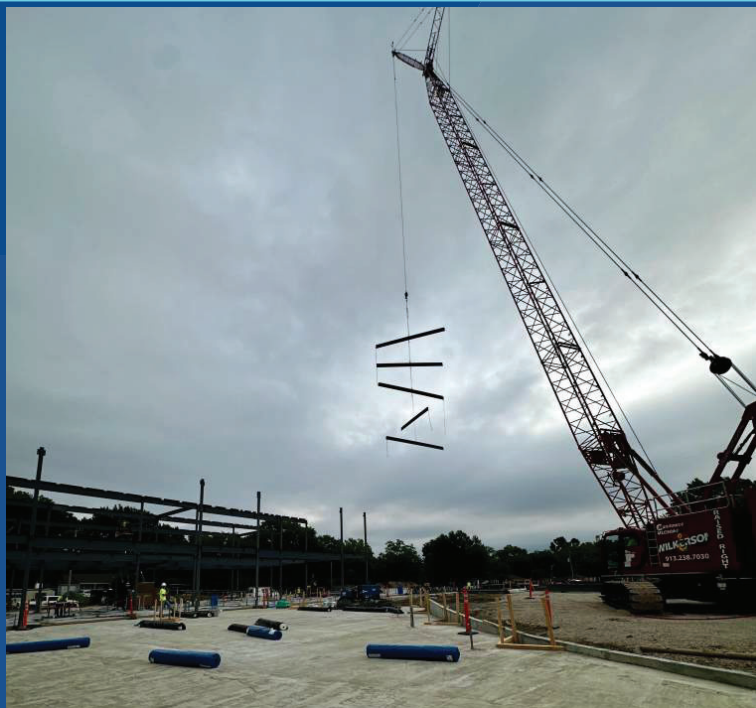
### SHAWNEE MISSION SCHOOL DISTRICT TOMAHAWK ELEMENTARY SCHOOL OPENING FALL 2025



## SMSD Tomahawk Elementary School



**Tomahawk Elementary School**  
6301 W 78th St. Shawnee Mission KS, 66204

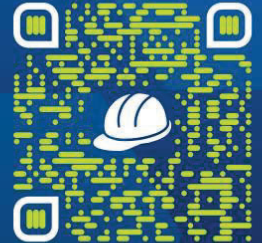


Area A Structural Steel Install



**BUILDING  
THE FUTURE**

A K-12 CONSTRUCTION EDUCATION INITIATIVE OF JE DUNN



[BUILDINGTHEFUTURE.JEDUNN.COM](http://BUILDINGTHEFUTURE.JEDUNN.COM)



Area A Steel



**SMSD Tomahawk Elementary School**





Tomahawk Elementary School  
6301 W 78th St. Shawnee Mission KS,  
66204

**SAFETY**  
**EVERYONE.**  
**EVERYWHERE.**  
**ALL THE TIME.**



Kitchen Concrete Slab Preparation



North West Corner Site View



**SMSD Tomahawk Elementary School**



## Tomahawk Elementary

### School

6301 W 78th St. Shawnee Mission  
KS, 66204

# CONSTRUCTION UPDATE 6/7/2024

**OWNER:** Shawnee Mission School District

**ARCHITECT:** DLR Group

**CM:** JE DUNN

### CURRENT PROGRESS

- Area A & B Recessed Slab Install
- Area B South Slab Install
- Kitchen Underground MEP
- Gym Underground MEP

### 2 WEEK LOOK AHEAD

- Kitchen Slab Install
- Gym Slab Install
- Area A Structural Steel Erection

## SHAWNEE MISSION SCHOOL DISTRICT TOMAHAWK ELEMENTARY SCHOOL OPENING FALL 2025



SHAWNEE MISSION  
SCHOOL DISTRICT



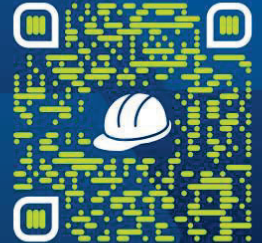
# SMSD Tomahawk Elementary School



**Tomahawk Elementary School**  
6301 W 78th St. Shawnee Mission KS, 66204



Area A Slab Install



[BUILDINGTHEFUTURE.JEDUNN.COM](http://BUILDINGTHEFUTURE.JEDUNN.COM)



Cafeteria Slab Install



**SMSD Tomahawk Elementary School**





Tomahawk Elementary School  
6301 W 78th St. Shawnee Mission KS,  
66204



Completed FEMA Gym Install

**SAFETY**  
**EVERYONE.**  
**EVERYWHERE.**  
**ALL THE TIME.**



Kitchen Underground MEP



**SMSD Tomahawk Elementary School**



## Tomahawk Elementary

### School

6301 W 78th St. Shawnee Mission  
KS, 66204

# CONSTRUCTION UPDATE 5/24/2024

**OWNER:** Shawnee Mission School District

**ARCHITECT:** DLR Group

**CM:** JE DUNN

### CURRENT PROGRESS

- Area A/B South Underground MEP
- Grouting of Pre-Cast Concrete

### 2 WEEK LOOK AHEAD

- Area B South Slab Install
- Structural Steel Delivers to Site
- Kitchen Underground MEP
- Gym Slab Install

SHAWNEE MISSION SCHOOL DISTRICT  
**TOMAHAWK ELEMENTARY SCHOOL**  
OPENING FALL 2025



SHAWNEE MISSION  
SCHOOL DISTRICT



# SMSD Tomahawk Elementary School





## Tomahawk Elementary School

6301 W 78th St. Shawnee Mission KS, 66204

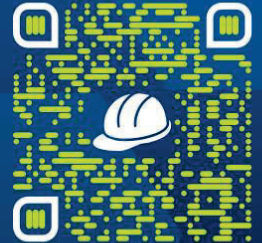


Ongoing Underground MEP



# BUILDING THE FUTURE

A K-12 CONSTRUCTION EDUCATION INITIATIVE OF JE DUNN



[BUILDINGTHEFUTURE.JEDUNN.COM](http://BUILDINGTHEFUTURE.JEDUNN.COM)



Area B North Slab Install



## SMSD Tomahawk Elementary School





Tomahawk Elementary School  
6301 W 78th St. Shawnee Mission KS,  
66204



Installed FEMA Gym

**SAFETY**  
**EVERYONE.**  
**EVERYWHERE.**  
**ALL THE TIME.**



FEMA Gym Install



**SMSD Tomahawk Elementary School**



**Tomahawk Elementary  
School**  
6301 W 78th St. Shawnee Mission  
KS, 66204

## CONSTRUCTION UPDATE 4/19/2024

**OWNER:** Shawnee Mission School  
District

**ARCHITECT:** DLR Group

**CM:** JE DUNN

### CURRENT PROGRESS

- Area B Footing Install
- Area A Underground MEP Install
- Site Utility Install

### 2 WEEK LOOK AHEAD

- Area B Underground MEP Install
- Area A Concrete Slab Install

SHAWNEE MISSION SCHOOL DISTRICT  
**TOMAHAWK ELEMENTARY SCHOOL**  
OPENING FALL 2025



SHAWNEE MISSION  
SCHOOL DISTRICT



DLR Group  
Architecture | Engineering | Planning | Interior



# SMSD Tomahawk Elementary School



## Tomahawk Elementary School

6301 W 78th St. Shawnee Mission KS, 66204

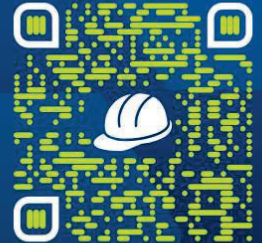


Retaining Wall Progress



# BUILDING THE FUTURE

A K-12 CONSTRUCTION EDUCATION INITIATIVE OF JE DUNN



[BUILDINGTHEFUTURE.JEDUNN.COM](http://BUILDINGTHEFUTURE.JEDUNN.COM)



Underground MEP Area A



## SMSD Tomahawk Elementary School





Tomahawk Elementary School  
6301 W 78th St. Shawnee Mission KS,  
66204

**SAFETY**  
**EVERYONE.**  
**EVERYWHERE.**  
**ALL THE TIME.**



Area B Footing Install



Admin Area Concrete Install



**SMSD Tomahawk Elementary School**



**Tomahawk Elementary  
School**  
6301 W 78th St. Shawnee Mission  
KS, 66204

## CONSTRUCTION UPDATE 4/5/2024

**OWNER:** Shawnee Mission School  
District

**ARCHITECT:** DLR Group

**CM:** JE DUNN

### CURRENT PROGRESS

- Area A Footing Install
- Underground MEP Install
- Retaining Wall Install

### 2 WEEK LOOK AHEAD

- Area A Concrete Slab Install
- Area B Footings Install

SHAWNEE MISSION SCHOOL DISTRICT  
**TOMAHAWK ELEMENTARY SCHOOL**  
OPENING FALL 2025



SHAWNEE MISSION  
SCHOOL DISTRICT



DLR Group  
Architecture | Engineering | Planning | Interiors



# SMSD Tomahawk Elementary School





**Tomahawk Elementary School**  
6301 W 78th St. Shawnee Mission KS, 66204

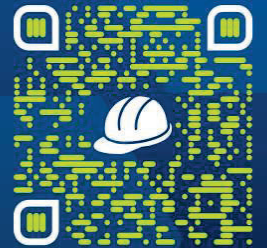


Retaining Wall Install



**BUILDING  
THE FUTURE**

A K-12 CONSTRUCTION EDUCATION INITIATIVE OF JE DUNN



[BUILDINGTHEFUTURE.JEDUNN.COM](http://BUILDINGTHEFUTURE.JEDUNN.COM)



Radius Storefront Footings



**SMSD Tomahawk Elementary School**





Tomahawk Elementary School  
6301 W 78th St. Shawnee Mission KS,  
66204



Gym Footing Install

**SAFETY**  
**EVERYONE.**  
**EVERYWHERE.**  
**ALL THE TIME.**



Site Utilities Install



**SMSD Tomahawk Elementary School**

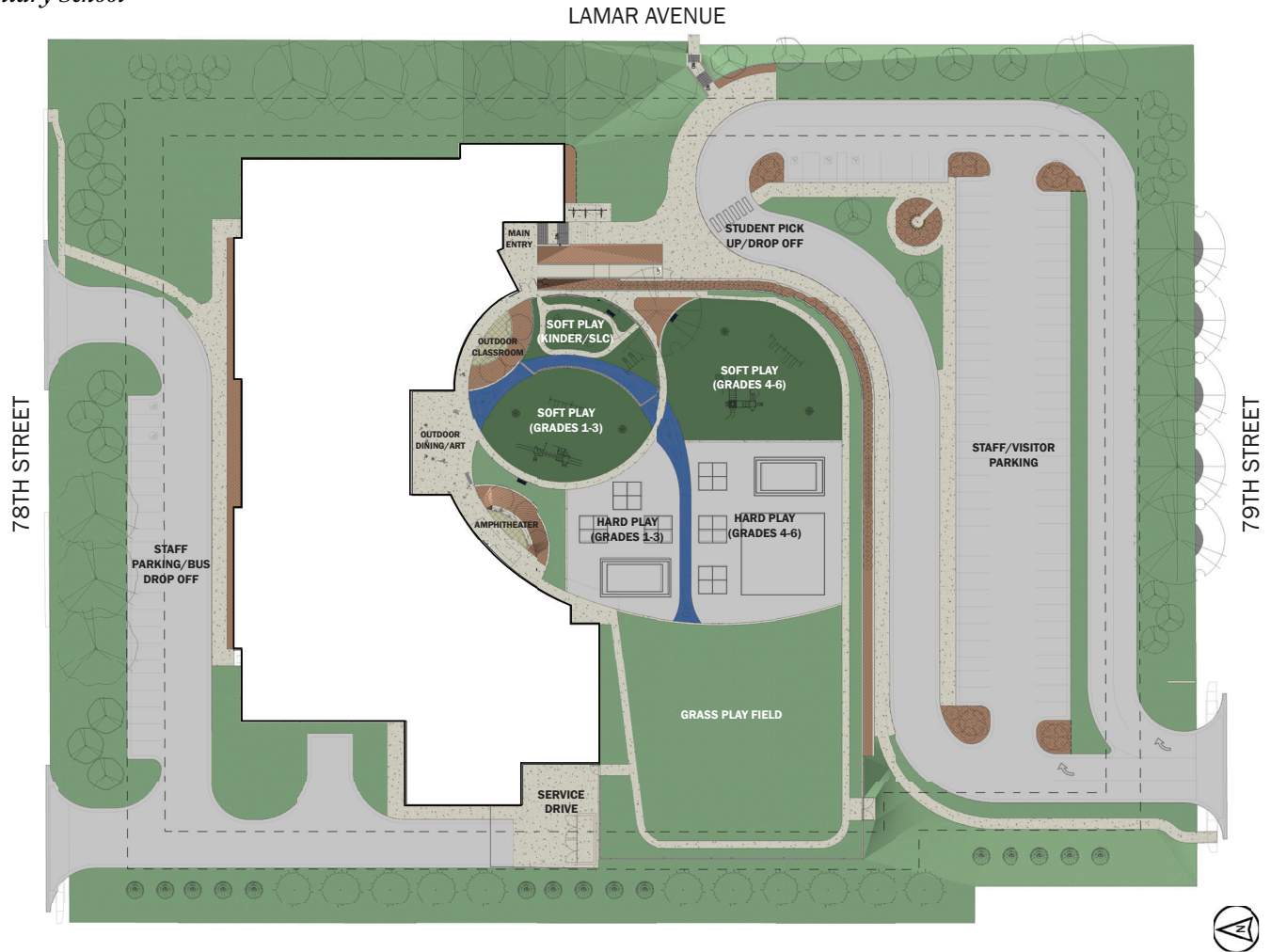


*Tomahawk Elementary School*  
**Media Center**





Tomahawk Elementary School  
**Site Plan**



TOMAHAWK ELEMENTARY SCHOOL  
 05/18/2023 Town Hall Open House

DESIGN PHASE

PD SD **DD** CD

COPYRIGHT © 2023

THIS INFORMATION IS CONCEPTUAL IN NATURE  
 AND IS SUBJECT TO ADJUSTMENTS PENDING  
 FURTHER PROJECT DEVELOPMENT.





*Tomahawk Elementary School*  
**Floor Plan: Level 01**



- ADMINISTRATION
- ATHLETICS
- MUSIC
- MEDIA CENTER
- SPECIAL LEARNING AREAS
- ART / MAKER SPACE
- COMMONS
- LEARNING STUDIO
- SERVICE



**TOMAHAWK ELEMENTARY SCHOOL**  
 05/18/2023 Town Hall Open House

DESIGN PHASE  
 PD SD **DD** CD

COPYRIGHT© 2023  
 THIS INFORMATION IS CONCEPTUAL IN NATURE  
 AND IS SUBJECT TO ADJUSTMENTS PENDING  
 FURTHER PROJECT DEVELOPMENT.



*Tomahawk Elementary School*  
**Floor Plan: Level 02**



- |                |                        |                   |
|----------------|------------------------|-------------------|
| ADMINISTRATION | ATHLETICS              | MUSIC             |
| MEDIA CENTER   | SPECIAL LEARNING AREAS | ART / MAKER SPACE |
| COMMONS        | LEARNING STUDIO        | SERVICE           |



TOMAHAWK ELEMENTARY SCHOOL  
 05/18/2023 Town Hall Open House

DESIGN PHASE

PD SD **DD** CD

COPYRIGHT © 2023

THIS INFORMATION IS CONCEPTUAL IN NATURE  
 AND IS SUBJECT TO ADJUSTMENTS PENDING  
 FURTHER PROJECT DEVELOPMENT.

**DLRGROUP**



*Tomahawk Elementary School*

**Exterior - Looking Toward Commons**





*Tomahawk Elementary School*

**Exterior - Looking Toward Playgrounds**





*Tomahawk Elementary School*  
**Main Entry**



*Tomahawk Elementary School*  
**Dining Commons**

