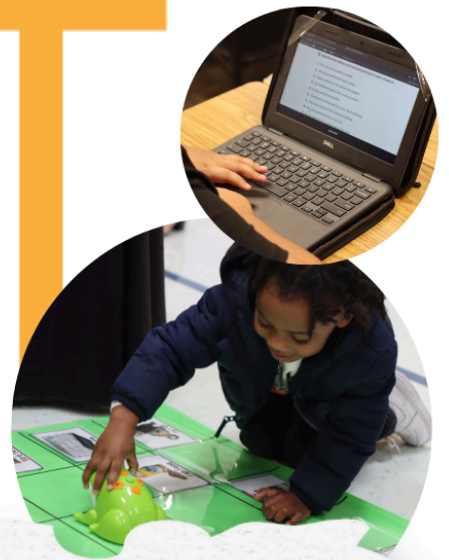


---

**CHISD CHOICE PROGRAMS**

---

**CHOOSE  
YOUR  
SEAT**



**CEDAR HILL ISD**

Choice Programs Guide

**2025-2026**



# LETTER FROM THE SUPERINTENDENT

Dear Cedar Hill ISD Families,

Cedar Hill Independent School District has a wide variety of pathways to serve scholars' academic interests. We present the Choose Your Seat Program handbook so that our scholars and their families can choose the program that best fits them.



We have the academically accelerated Collegiate Pathway, which starts in Pre-K at Collegiate Prep Elementary and goes through middle school (Collegiate Academy) and graduation (Collegiate High School). Collegiate scholars attend Dallas College-Cedar Valley during their final two years of high school and earn their diploma and Associate's Degree at the same time!

The Early College Academy (ECA) Program at Cedar Hill High School (CHHS) offers the same path to an Associate's Degree, but scholars will take their college-level courses at their campus.

High Pointe Elementary is the new home of the Fine Arts Program where scholars experience a more in-depth curriculum in Music, Art, and more.

Lake Ridge Elementary is proud to claim the district's only Montessori Program, which runs through fifth grade. In the Montessori program, scholars gain independence through a self-paced curriculum.

These programs are excellent, and we hope that you consider the one that best matches your child's educational needs. The deadline to apply for the 2025-26 school year is January 24, 2025.

Sincerely,

A handwritten signature in black ink that reads "Gerald B. Hudson". The signature is written in a cursive style with a vertical line separating the first and last names.

Dr. Gerald B. Hudson, Superintendent  
Cedar Hill Independent School District



# EXPLORATION

## ACADEMIC CHOICES TO FIT THE INTERESTS & NEEDS OF YOUR CHILD

Scholars and families enrolled in Cedar Hill ISD, have the opportunity to select an educational path tailored to suit their own interests while preparing for the future. We know that one size does not fit all. STEM, arts and culture, and real-world career experiences - our School Choice Programs provide options to help align your child's education to their interests and the ways they learn best. Choice Programs are uniquely themed concepts implemented at select schools throughout the school district.

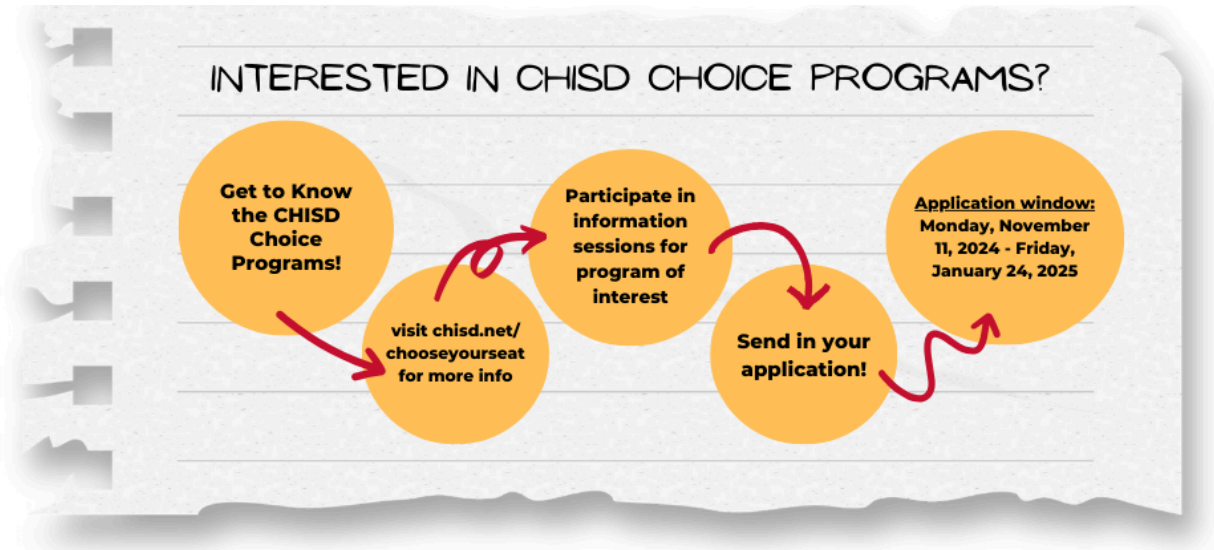
These programs are tailored to meet the diverse needs of scholars while challenging them to grow personally and excel academically. All scholars have an opportunity to participate in a Choice Program based on seat availability. We encourage you to exercise your power of choice with CHISD by exploring all of the programs available to scholars and selecting the program that best matches your child's interests and future goals. Requirements involving uniform policy are stated in the district's [dress code](#) policy.





## APPLICATION

1. Visit [chisd.schoolmint.com](https://chisd.schoolmint.com) to access the Schoolmint application portal.
2. If you have previously applied for CHISD Choice programs through Schoolmint, log in to your account. If you have not previously applied for CHISD Choice programs through Schoolmint, create a parent account on the Login Dashboard.
3. You may submit multiple applications for multiple family members under your account.
4. You may submit an application for more than one Choice Program, but you will only be able to accept a seat at one school.
5. You will receive emails from Schoolmint to notify you of the status of your application, but you can also opt for text messages as well. Please use an email that you frequently use and ensure that you check your spam mail for updates. Read those emails carefully as additional information may be required.



# SCHOLAR ASSIGNMENT GUIDELINES

## APPLYING SCHOLARS

### **Seat Availability Deadline**

The movement of applicants will cease one week before the start of school due to the paperwork needed for Dallas College and enrollment paperwork. The process will resume one week after the first week of school.

### **Dallas College Stipulations for Collegiate High School and Early College Academy**

After your seat has been accepted via SchoolMint, each campus counselor will contact the incoming scholars via email to set an Onboarding Orientation Appointment with program-specific details on what documents are required for admittance into Dallas College.

### Credit-Based Exam Testing

Scholars who desire to test out of a grade level or subject area must complete this exam before the end of the application process. Any scholars who test after this date, will not be guaranteed a seat in their moved grade or subject area. A seat will only be honored if they are available.

## CURRENT SCHOLARS

Scholars currently enrolled in a Choice Program will remain assigned to that program unless they no longer wish to remain in the program or if they are not invited to return due to “good standing” requirements.

Parents who no longer wish for their child to remain in the program of Choice must indicate their intent by logging on to their Schoolmint Account and completing the intent to return form or withdrawing their scholar from the program. The window to complete the intent to return form for current families is December 1-15, 2024.

### “GOOD STANDING”

All scholars enrolled in a Choice Program are required to meet certain academic and behavior standards to remain in “good standing” with CHISD Choice Programs. Failure to meet these criteria may result in probationary status. Learners will be evaluated before winter break and again at the end of the school year to determine eligibility for re-enrollment into the program



for the upcoming school year. If a learner completes all components of the individual support plan and achieves “good standing”, they will be invited to re-enroll for the upcoming school year.

### **CAMPUS TRANSFERS**

Current scholars who desire to transfer from one Choice Program to another must complete a New Scholar Application through their Schoolmint account.

### **REQUIRED DISTRICT ENROLLMENT PROCESS**

Upon accepting your child’s seat assignment, the final step in the choice process is to complete the enrollment process at the district level at [chisd.net/enrollment](http://chisd.net/enrollment). You will be contacted by the district when the enrollment period opens. If you have questions regarding the status of your enrollment application, contact the Enrollment Office at [registrationhelp@chisd.net](mailto:registrationhelp@chisd.net).



If you have questions regarding the status of your child’s choice application or placement, please log on to your Schoolmint account or contact the Innovation Department at [regchoice@chisd.net](mailto:regchoice@chisd.net).

*No student or employee in CHISD District shall, on the basis of age, gender, race, religion, national origin, marital status, or handicapping condition be denied the benefits of, or be a student to discrimination under, any education program or activity.*

# Office of Innovation

---

**Tyesha Smith**

Executive Director of Innovation

972-291-1581 ext. 4240

[tyesha.lowe@chisd.net](mailto:tyesha.lowe@chisd.net)

**Tiara Brown**

Innovation Coordinator

972-291-1581 ext. 4063

[tiara.brown@chisd.net](mailto:tiara.brown@chisd.net)

**Jasmine Boleware**

Innovation PEIMS Data Clerk

972-291-1581 ext. 4606

[jasmine.boleware@chisd.net](mailto:jasmine.boleware@chisd.net)



# APPLICATION PERIOD

MONDAY, NOVEMBER 11, 2024 - FRIDAY, JANUARY 24, 2025

DATE	EVENT	EVENT SUMMARY
November 11, 2024	Applications Open	Applications are available online through the district website- <a href="https://chisd.schoolmint.com/login">https://chisd.schoolmint.com/login</a>
December 2, 2024 - December 15, 2024	Returning Scholars: Intent to Return Applications are OPEN	Must complete through your Schoolmint account <a href="https://chisd.schoolmint.com/login">https://chisd.schoolmint.com/login</a>
January 13-17, 2025	Academic and Behavioral Standing Notifications	Principal notifications sent
January 8 -21, 2025	Interest Meetings/ Tours	On-site interest meetings for the program of choice.
January 24, 2025	Application Deadline	Applications Due
January 31, 2025	Interview/Observation Deadline	All observations and interviews are due at this time
February 7, 2025	Lottery Notification	District notifies parents of acceptance
February 21, 2025	Acceptance Confirmation	Parent/Scholar acceptance dates
Prior to April 11, 2025	Academic and Behavioral Standing Notifications	Campus notification of scholars in probationary standing
April 15, 2025	District Enrollment Opens	Mandatory CHISD enrollment in Skyward is required for full admission



# PRE-KINDERGARTEN CHOICE PROGRAMS

## WHY PRE-KINDERGARTEN?

Cedar Hill ISD is honored that you are considering placing your child at one of our Pre-K facilities. Enrolling your scholar in early childhood education is one of the best decisions you can make! Ninety percent of the brain is developed by the age of five. Cedar Hill ISD PreK and kindergarten focus on readiness skills in all academic areas as well as the important social, emotional, and problem-solving skills they will need for success in school.

CHISD PreK programs include:

- State-of-the-Art classrooms
- Technology-rich classrooms
- Social Emotional Learning
- Library Services
- Parent classes and parent education classes
- Certified nurses and counselors
- A rigorous curriculum focused on kindergarten readiness skills and the PK guidelines
- Hands-on lessons in STEM, literacy, and more!



## CHOICE PRE-K PROGRAMS



Fine Arts @ High Pointe Elementary  
Montessori @ Lake Ridge Elementary  
Collegiate Prep Elementary

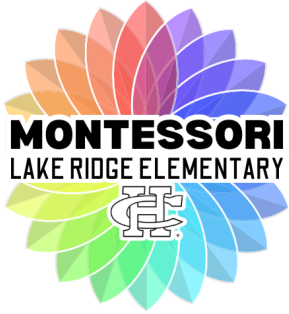
## HOW TO APPLY

### **Tuition-Based Pre-k & Kinder Choice Program Application**

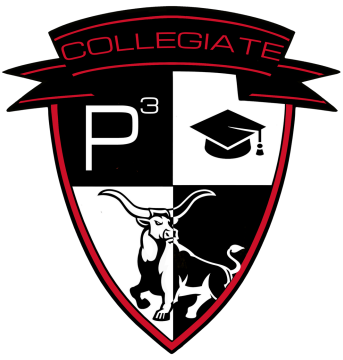
Three CHISD elementary campuses offer tuition-based prekindergarten and kindergarten programs. Pre-K 4 tuition costs \$550 per month (\$275 for current CHISD employees) or free for those who qualify. Between November and January, families have an opportunity to apply to one of the three tuition-based pre-k or kindergarten choice programs.

# CHISD ELEMENTARY CHOICE PROGRAMS


SCHOOL	THEME	PROGRAM DESCRIPTION
 <p><b>FINE ARTS HIGH POINTE ELEMENTARY</b></p> <p><b>HIGH POINTE ELEMENTARY</b> Grade Levels: PreK4 - 5th grade</p> <p><b>Principal:</b> Dr. Coletha Johnson</p> <p>1351 High Pointe Lane. Cedar Hill, TX 75104 972-291-4231</p> <p>Helpful Links:</p> <ul style="list-style-type: none"> <li>• <a href="#">Campus Website</a></li> <li>• <a href="#">Transportation</a></li> <li>• <a href="#">Student meals</a></li> <li>• <a href="#">FAQs</a></li> </ul>	<p><b>Fine Arts</b></p>	<p>The new High Pointe Elementary Fine Arts Academy is a multifaceted campus that provides a rigorous academic environment while encouraging artistic excellence through integration with multiple arts disciplines and assessments.</p> <ul style="list-style-type: none"> <li>• Serves grades PreK - 5</li> <li>• Develops their passion for art, music, and dance</li> <li>• Receive rigorous academic instruction in vocal motion, honors choice, orchestra, band/percussion, piano, and visual arts</li> <li>• Flourish in a small school setting.</li> </ul> <p>Artists at High Pointe experience art education at each grade level from awareness, exploration, and application.</p> <ul style="list-style-type: none"> <li>• <b>Prek-1st Grade:</b> Awareness</li> <li>• <b>2nd &amp; 3rd Grade:</b> Exploration</li> <li>• <b>4th &amp; 5th Grade:</b> Application</li> </ul> <p><b>Admission Requirements</b></p> <ul style="list-style-type: none"> <li>• A lottery system is used for scholars applying to the program.</li> </ul> <p><b>Is this the right fit for your scholar?</b></p> <ul style="list-style-type: none"> <li>• Your child is creative and self-disciplined.</li> <li>• Your child enjoys showcasing his or her talents.</li> <li>• Your child has an interest in art-infused classes that incorporate self-control, discipline, focus, and tolerance.</li> </ul>
 <p><b>COLLEGIATE PREPARATORY ELEMENTARY</b> Grade Levels: PreK4 - 5th grade</p> <p><b>Principal:</b> Mr. Ronnie Davis</p> <p>975 Pickard Drive</p>	<p><b>Collegiate Pathway</b></p>	<ul style="list-style-type: none"> <li>• Learn at an accelerated pace and build their leadership skills through programs such as Gifted and Talented, Classroom Ambassadors, and AVID.</li> <li>• AVID (Advancement Via Individual Determination) is implemented at every grade level. Scholars acquire academic traits, including organization, study skills, and communication, that prepare them for success in later grades.</li> <li>• This program is part of the district's Collegiate Pathway (Collegiate Prep, Collegiate Academy Middle School and Collegiate High School) graduate with an associate degree.</li> </ul>

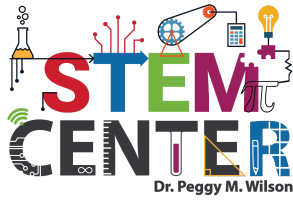
<p>Cedar Hill, TX 75104 972-293-4502</p> <p>Helpful Links:</p> <ul style="list-style-type: none"> <li>• <a href="#">Campus Website</a></li> <li>• <a href="#">Transportation</a></li> <li>• <a href="#">Student meals</a></li> <li>• <a href="#">FAQs</a></li> </ul>		<p><b>Admission Requirements</b></p> <ul style="list-style-type: none"> <li>• Acceptance for grades 2nd-5th is based on MAP assessment and grades from the previous year.</li> </ul> <p><b>Is this the right fit for your scholar?</b></p> <ul style="list-style-type: none"> <li>• Your child seeks an enriching course of study.</li> <li>• Your child learns at an accelerated pace.</li> <li>• Your child naturally strives for excellence and high achievement.</li> </ul>
 <p><b>LAKE RIDGE ELEMENTARY</b> Grade Levels: PreK3 - 5th grade</p> <p><b>Principal:</b> Dr. Amanda McCarther</p> <p>1020 Lake Ridge Parkway Cedar Hill, TX 75104 972-293-4501</p> <p>Helpful Links:</p> <ul style="list-style-type: none"> <li>• <a href="#">Campus Website</a></li> <li>• <a href="#">Transportation</a></li> <li>• <a href="#">Student meals</a></li> <li>• <a href="#">FAQs</a></li> </ul>	<p><b>Montessori</b></p>	<p>The Montessori program serves preK3 - 5th grade. Children learn concepts using hands-on Montessori materials before learning abstractly. Freedom of choice and movement, as well as grace and courtesy, are key components of the Montessori classroom. Practical life, sensorial, math, language, and culture are the five key areas of learning.</p> <ul style="list-style-type: none"> <li>• Multi-age classrooms encourage learning based on a child's natural development.</li> <li>• Scholars learn at their own pace by choosing their path with materials and experiences.</li> <li>• Scholars learn in a family-oriented, community-based environment with a caring staff.</li> </ul> <p><b>Admission Requirements</b></p> <ul style="list-style-type: none"> <li>• Families must provide the required documentation: <ul style="list-style-type: none"> <li>○ Birth certificate</li> <li>○ Early Childhood/Primary Program Recommendation Form</li> </ul> </li> <li>• Parents must attend one (1) scheduled parent informational session.</li> <li>• Student applicants are required to complete an in-class observation facilitated by Montessori teachers.</li> <li>• Parents must complete a mandatory interview facilitated by the Montessori instructors.</li> </ul>

# MIDDLE CHOICE SCHOOL PROGRAMS

SCHOOL	THEME	PROGRAM DESCRIPTION
 <p><b>COLLEGIATE ACADEMY</b> Grade Levels: 6th - 8th grades</p> <p><b>Principal:</b> John Edmun</p> <p>1515 W. Beltline Rd. Cedar Hill, TX 75104 469-272-2021</p> <p>Helpful Links</p> <ul style="list-style-type: none"> <li>• <a href="#">Campus Website</a></li> <li>• <a href="#">Transportation</a></li> <li>• <a href="#">Student meals</a></li> <li>• <a href="#">FAQs</a></li> </ul>	<p><b>Magnet</b></p> <p><b>Assistant Principal:</b> Mrs. Marquita Rollins-White</p> <p><b>Eligibility Criteria:</b></p> <ul style="list-style-type: none"> <li>• 80%+ GPA</li> <li>• 70%+ NWEA</li> <li>• Most recent report card</li> <li>• Most recent discipline record</li> </ul>	<ul style="list-style-type: none"> <li>• Expect to take courses at an accelerated pace</li> <li>• Under a Magnet program model. <a href="#">You can learn more about the change here.</a></li> <li>• AVID (Advancement Via Individual Determination) is implemented at every grade level. Scholars acquire academic traits, including organization, study skills, and communication, that prepare them for success in later grades.</li> <li>• This program is part of the district's Collegiate Pathway (Collegiate Prep, Collegiate Academy Middle School, and Collegiate High School) graduate with an associate degree.</li> </ul> <p><b>Admission Requirements</b></p> <ul style="list-style-type: none"> <li>• If more than 125 scholars apply and qualify all scholars who are eligible will be randomly assigned a number. The first 125 scholars will be accepted and the remaining scholars will be placed on the waitlist.</li> <li>• For the Collegiate Academy, all scholars will move to the next grade level if they meet the basic requirements of attendance, discipline, and grades.</li> <li>• All new scholars must meet the Magnet Criteria to be placed on the waitlist before admission to the program.</li> </ul> <p><b>Is this the right fit for your scholar?</b></p> <ul style="list-style-type: none"> <li>• Your child seeks an enriching course of study that enables him or her to combine high school and college courses in order to earn an associate degree in high school.</li> </ul> <p>Your child naturally strives for excellence and high achievement.</p>

# HIGH CHOICE SCHOOL PROGRAMS

SCHOOL	THEME	PROGRAM DESCRIPTION
 <p><b>CEDAR HILL COLLEGIATE HIGH SCHOOL</b></p> <p>Grade Levels: 9th - 12th grades</p> <p><b>Principal:</b> John Edmun</p> <p>1515 W. Beltline Rd. Cedar Hill, TX 75104 469-272-2021</p> <p>Helpful Links</p> <ul style="list-style-type: none"> <li>• <a href="#">Campus Website</a></li> <li>• <a href="#">Transportation</a></li> <li>• <a href="#">Student meals</a></li> <li>• <a href="#">FAQs</a></li> </ul>	<p><b>Magnet Model</b></p> <p><b>Associate Principal:</b> Mrs. Latoya Hollins</p> <p><b>Eligibility Criteria:</b></p> <ul style="list-style-type: none"> <li>• 80%+ GPA</li> <li>• 70%+ NWEA</li> <li>• Most recent report card</li> <li>• Most recent high school transcript (college transcript if applicable)</li> </ul> <p><b>Admission Requirements</b></p> <ul style="list-style-type: none"> <li>• All scholars will move to the next grade level if they meet the basic requirements of attendance, discipline, and grades.</li> <li>• New scholars must meet acceptance criteria</li> </ul>	<ul style="list-style-type: none"> <li>• Focus on accelerated instruction with pre-advanced placement, advanced placement and dual credit-courses to prepare for post-secondary education</li> <li>• Beginning in ninth grade, scholars can earn up to 60 hours of college credit or an associates degree from Dallas College. For their 11th and 12th grade years, scholars attend classes at Cedar Valley college full-time and are immersed in the college experience.</li> <li>• Under a Magnet program model. <a href="#">You can learn more about the change here.</a></li> <li>• AVID (Advancement Via Individual Determination) is implemented at every grade level. Scholars acquire academic traits that prepare them for success in later grades, including organization, study skills, and communication.</li> <li>• This program is part of the district's Collegiate Pathway (Collegiate Prep, Collegiate Academy Middle School and Collegiate High School) graduate with an associate degree.</li> </ul> <p><b>Associates Degree Information</b></p> <ul style="list-style-type: none"> <li>• Associates of Arts Degree AA - Graduate with up to 60+ college credit hours and an associate of arts degree that may be transferable to any public university in the State of Texas</li> </ul> <p><b>Is this the right fit for your scholar?</b></p> <ul style="list-style-type: none"> <li>• Your child seeks an enriching course of study that enables him or her to combine high school and college courses in order to earn an associate degree in high school</li> <li>• Your child naturally strives for excellence and high achievement.</li> </ul>



**PEGGY M. WILSON  
STEM CENTER**

**Principal:** John Edmun and Lee Joffre

Collegiate High School  
1515 W. Beltline Rd.  
Cedar Hill, TX 75104  
469-272-2021

\*AM and PM shuttle transportation provided to and from “home” campus (Cedar Hill High School)

**Career and Technical Programs of Study**

- Bio-Medical Science
- Education & Training
- Engineering
- Information Technology

- Promotes high school graduation and a post-secondary industry-based certification
- Provides a career pathway focus and opportunities to earn college credit
- Offers work-based learning opportunities and College/career readiness skills
- Bio-Medical Science -
  - Scholars use the same tools used in hospitals to explore physical therapy, veterinary science blood transfusions and more
- Education and Training
  - Encourages a passion for helping others
  - Exploring the careers of teacher, principal, curriculum specialist, or superintendent
  - Study human growth and development with hands-on experience
- Engineering (STEM)
  - Vast careers for future problem solvers and critical thinkers
  - Pathway for continuing education after graduation



**CEDAR HILL HIGH SCHOOL**

Grade Levels: 9th - 12th grades

**Principal: Lee Joffre**

**Early College Academy**

**Associate Principal:**  
Idol Mallard

Benchmarks for acceptance criteria:

- Benchmark 1-- Target Population
- Benchmark 2-- Partnership Agreement
- Benchmark 3-- Campus/IHE Meetings

Cedar Hill ISD partners with Cedar Valley College to offer Early College Academy (ECA) at Cedar Hill High School. ECA provides high school students with an opportunity to earn a high school diploma while earning up to 60 college credit hours.

The ECA at Cedar Hill High School:

- creates a means to higher education for first-generation college-going students
- provides dual credit at no cost to families
- offers rigorous instruction and accelerated courses

<p>1 Longhorn Blvd. Cedar Hill, TX 75104 469-272-2000</p>	<ul style="list-style-type: none"> <li>• <u>Benchmark 4-- Curriculum and Support</u></li> <li>• <u>Benchmark 5-- Academic Rigor and Readiness</u></li> <li>• <u>Benchmark 6-- School Design</u></li> </ul>	<ul style="list-style-type: none"> <li>• provides academic and social support services to help students succeed</li> <li>• increase college readiness, and reduces barriers to college access</li> <li>• Serves grades 9-12</li> </ul>
---	--	--