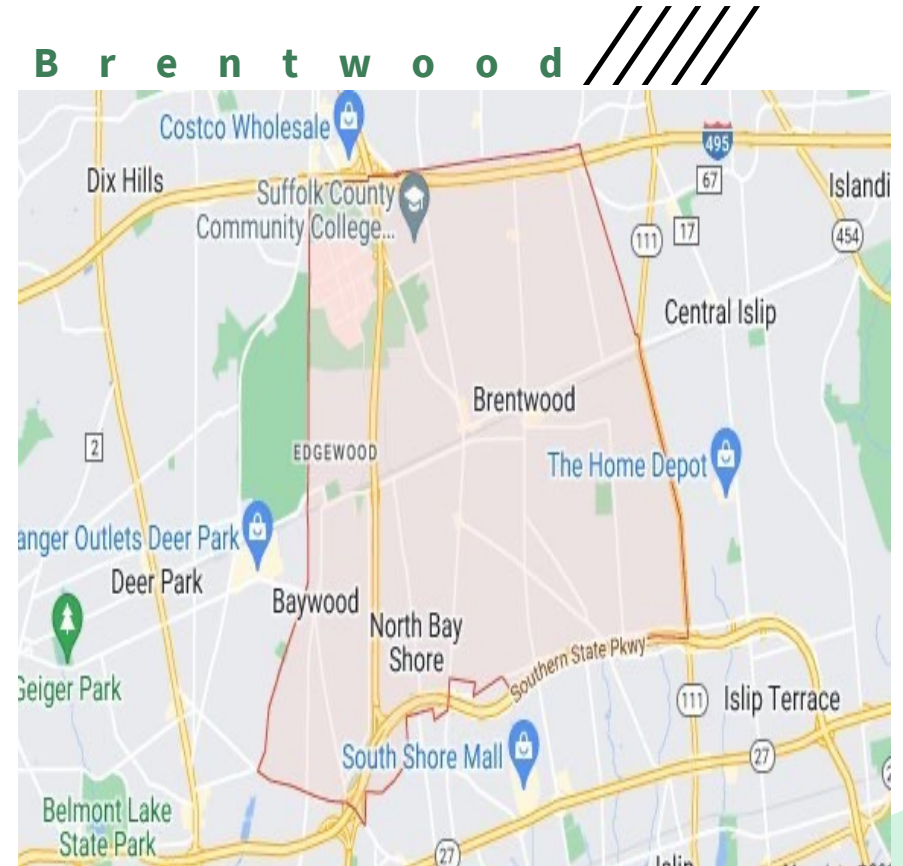




BUFSD

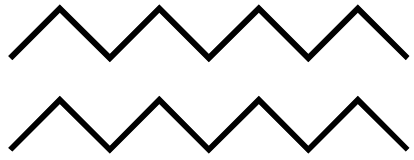
Empowering
Newcomer Families
With a Community
Plaza

LONG ISLAND
REGIONAL BILINGUAL EDUCATION
RESOURCE NETWORK



Paula Ribeiro, District Coordinator of Bilingual and ENL Programs K-12

pribeiro@bufsd.org 631-434-2511 cell: 631-398-0426



Snapshot

of Our Brentwood Community and District



Wanda Ortiz-Rivera, Interim Superintendent

Paula Ribeiro, District Coordinator of Bilingual and ENL Programs K-12

Maria Rodriguez, District Assistant Coordinator of Bilingual and ENL Programs K-12

Margaret Amores, District Assistant Coordinator of Bilingual and ENL Programs K-12

BUFSD

17 schools

18,203 students

1 HS with two Ross and Sonderling

1 Freshman Campus

4 Middle Schools

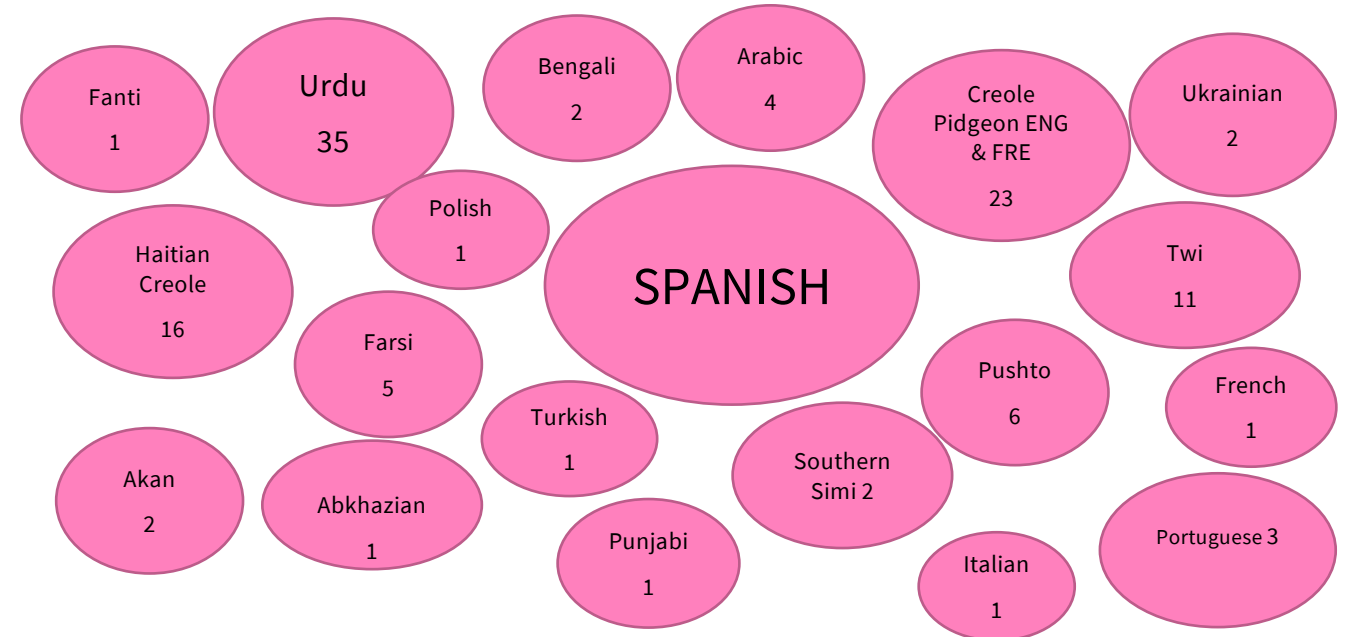
9 Elementary K-5 and 1-5 schools

2 Kinder Centers


86.4% Hispanic/Latino, Spanish



Home Languages of Our 2023-2024

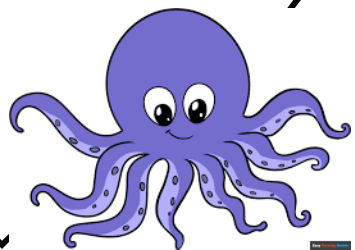


Ensuring equity and access: Community Plaza Liaisons, TA support, Bilingual Hotline, Rosetta Stone for students and families, and Propio, Pocket Talk, Printer Translating Devices and Services

The background of the slide is a photograph of a city square. In the center is a large, ornate fountain with multiple tiers and statues. Behind the fountain is a grand, classical-style building with a red-tiled roof and many windows. To the left, a red double-decker bus is visible. The sky is blue with some clouds. A large white circle with a black outline is overlaid on the right side of the image, containing the title text. A small pink circle is at the bottom left of the white circle, connected by a thin line.

ORIGIN OF OUR STORY

BORN IN PUERTO
RICO



Community Plaza Liaisons

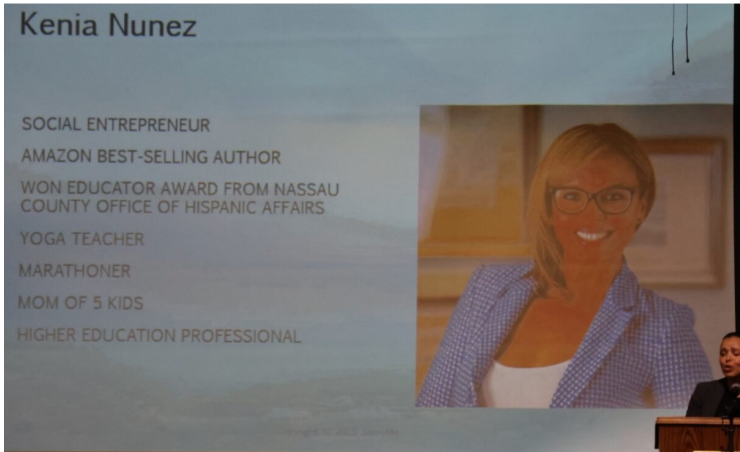
37 and counting...



Noche de las Estrellas



<https://biteable.com/watch/4162393/527511117cf8e58adf1e338874fb2b5a>



Our 7th Annual Spanish Spelling Bee



The HOW...

♥ Set a Project Vision and Mission

Community Plaza

- Go slow to move fast.
- Educate yourself.
- Build a team and a hub/plaza in each school.

- Maximize and be Strategic

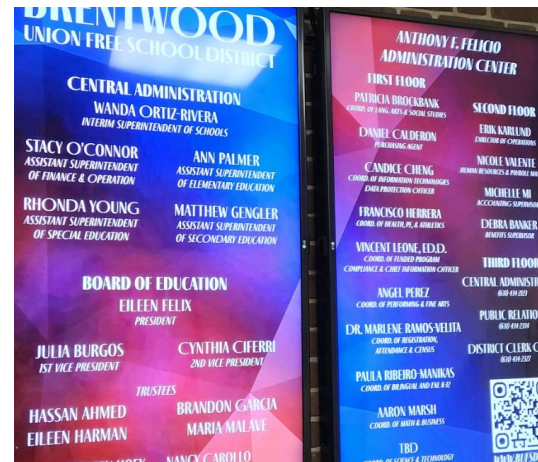
Title III Funds and assign hours

- Reach out to local community organizations:
- ♥YES, EOC, Pronto, etc.



Family Welcoming Center

- Be Purposeful and Strategic with RISWP Grant and Partners
- Collaborative to set expectations, assign responsibilities, establish consistency, re-evaluate and memorialize a plan.



PRESENTATION TITLE

Moving Forward

- Ribbon Cutting Ceremony
- More families addressed.
- Videos
- Website as a Resource
- Translate ALL resources provided:
- Parent Handbooks
- Protocol handbooks
- Align to Graduation +



Brentwood Union Free School District
**Family Welcoming
Center**



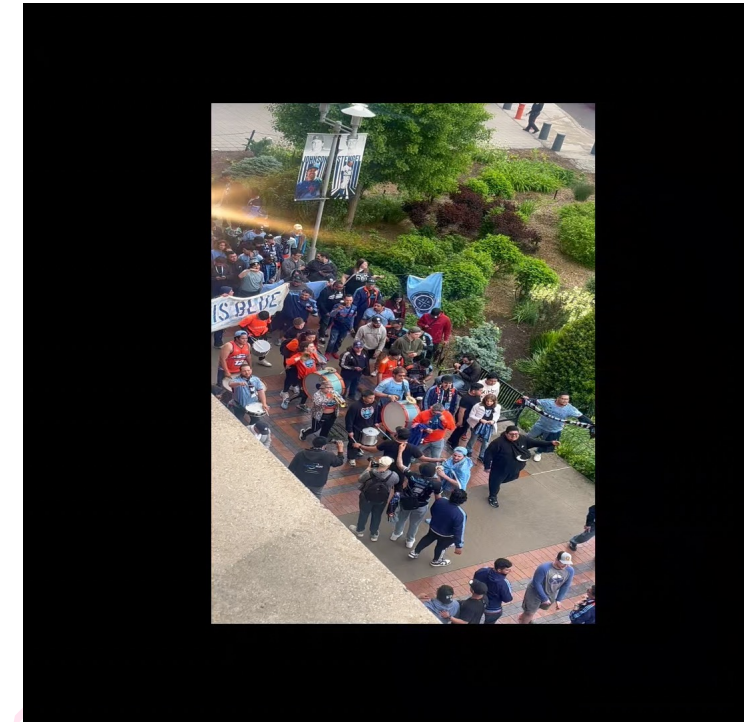
RISWP Grant

- **Refugee and Immigrant Student Welcome Program (RISWP)**
- RISWP funds activities including, but not limited to: expanded community school activities, the provision of school supplies to incoming students, training opportunities for staff on trauma and cultural sensitivity, employment of counselors and psychologists, and parental and family engagement and support for refugee and immigrant youth.

Our students Collaboration

- K-12 (23-24):1548
- K (24-25): 345
- Total # of students:1893
- RISWP students
- K-12 (23-24): 1094
- K (24-25): 64
- **Total # of RISWP students: 1158**
- **SIFE:547**

- ♥ Bilingual and ENL Office
- ♥ Student Intake and Registration
- ♥ Funded Programs
- ♥ Guidance
- ♥ Special Services



Brentwood Union Free School District
**Family Welcoming
Center**



Collaboration

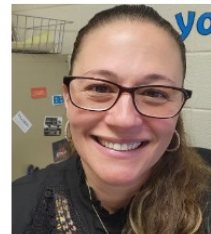
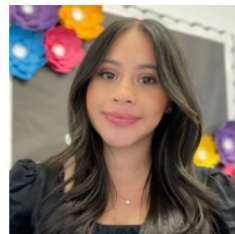
Bilingual and ENL Office
Student Intake and Registration
Funded Programs
Guidance



**BILINGUAL DROP-OUT
PREVENTION
BILINGUAL
GUIDANCE COUNSELOR,
RUTH COSME**

Our TEAM

- Cristina Romero, Social Worker
cristina.romero@bufsd.org
(631) 972-1461
- Michele Stylianos, Counselor and Coordinator of the McKinney Vento Act
mstylianos@bufsd.org
(631) 434-2305
- Michele Carrion-Ortiz, Parent Coordinator Liaison
mortiz@bufsd.org
(631) 434-2304
- Denise Joya, TOSA, Registration and Intake
djoya@bufsd.org
(631) 434-2304
- Wendy Gudema, and Sara Tricoche HTYPE Guidance, Education and Prevention Counselors
wendy.gudema@bufsd.org
(631) 434-2394



Seal of Biliteracy



**BILINGUAL AND ENGLISH AS A NEW
LANGUAGE EDUCATION**

Elementary
Family Engagement Handbook

**Bilingual and English as a New Language (ENL)
Education**





THANK YOU

- Paula Ribeiro
- Prubeiro@bufsd.org
- 631-434-2511
- 631-398-0426

