

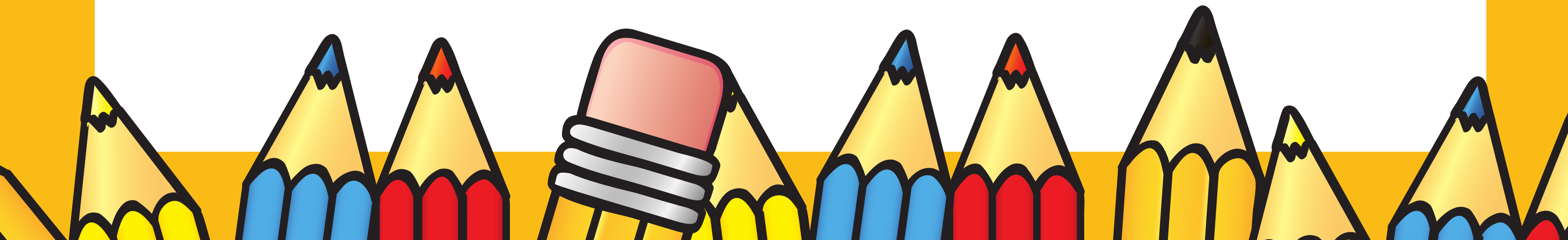


Uniondale Newcomer Parent University

Multilingual Education Department

Dr. Estrella Olivares-Orellana, Director of Multilingual Learners

Victoria Basantes-Anziani, MLL Intake Coordinator





Newcomer

Defined by NYSED as

ELL students born outside of the U.S. receiving ELL services through an ELL program for a duration of less than or equal to 3 years

For our purposes

ELL within 12 months of entry into the district





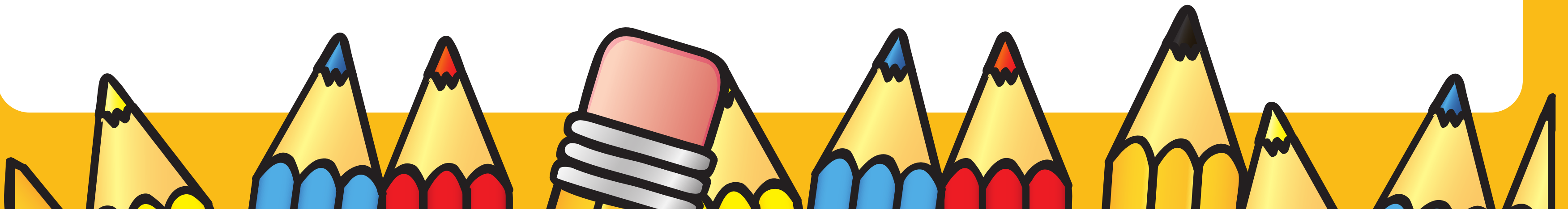
Our Mission is

to empower and support families who have recently arrived in our district by providing essential information, fostering community connections, and promoting advocacy skills.

Our Vision is

to reshape the educational paradigm for multilingual learners, reflecting our commitment to inclusivity and equity in education.

Through monthly sessions covering various topics, we aim to equip newcomer families with the knowledge, resources, and support networks necessary to navigate and succeed in their educational journey.





Uniondale U.F.S.D

5 Elementary Schools

(All schools have a Kindergarten Dual Language Program)

3 Elementary schools-ENL & TBE Program

2 Elementary Schools- ENL Program

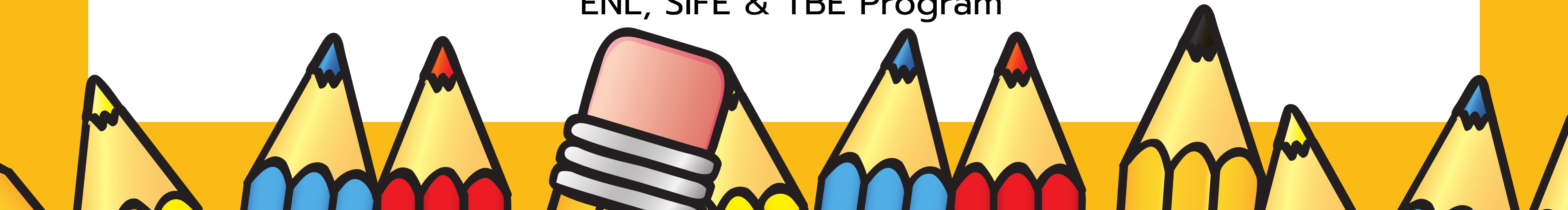
2 Middle Schools

THMS- ENL, SIFE & TBE Program

LRMS- ENL & TBE Program

Uniondale High School

ENL, SIFE & TBE Program

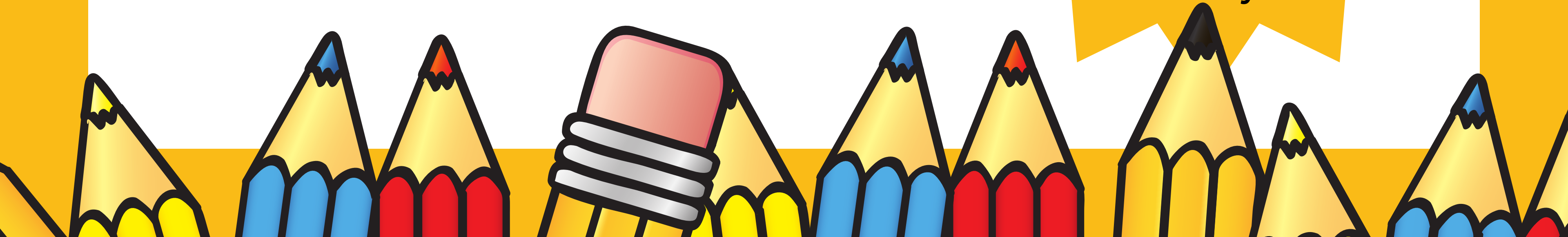




U.F.S.D. Demographics

K- 12 Students= 6,311
ELL Students= 1,626

Languages:
Arabic
French
Haitian Creole
Hindi
Polish
Russian
Spanish
Turkey





MLL Intake Process

Registration

- Power-enrollment Online Portal
- If a language other than English is spoken at home the student profile is tagged as potential "ELL"

ENL TEACHER

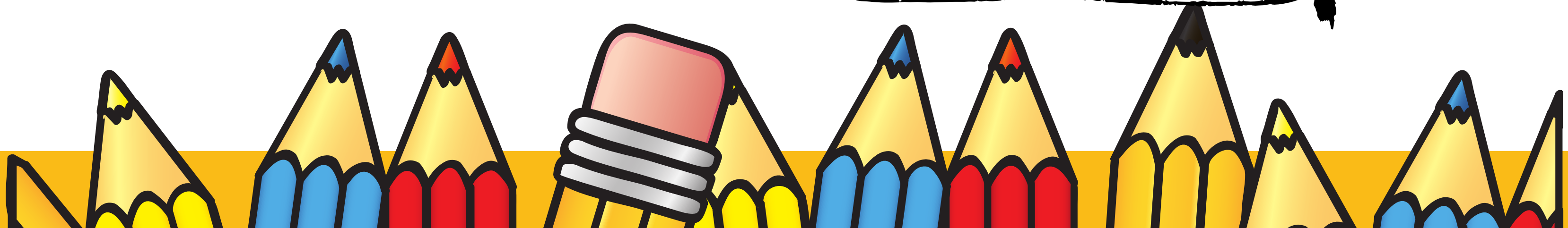
- Explains & fills out HLQ with Parent/Guardian
- NYSED Parent Orientation Video in family selected language
- Interviews student with CR-Part 154 Appendix A Questions
- If student, is not determined "English proficient" NYSITELL is administered
- If there is indication of interrupted education then MLS is administered

MLL Intake Coordinator

- Meet with student and family for intake
- Discuss placement for student based on English proficiency level and/or MLS scores
- Parent sign placement letter
- If student placement is not available in zoned school "permissive transfer" takes place
- Discuss with the parents school expectations, upcoming holidays/ breaks, events and Newcomer Parent University
- Sign up for upcoming events, afterschool & Newcomers Program via "QR Code"

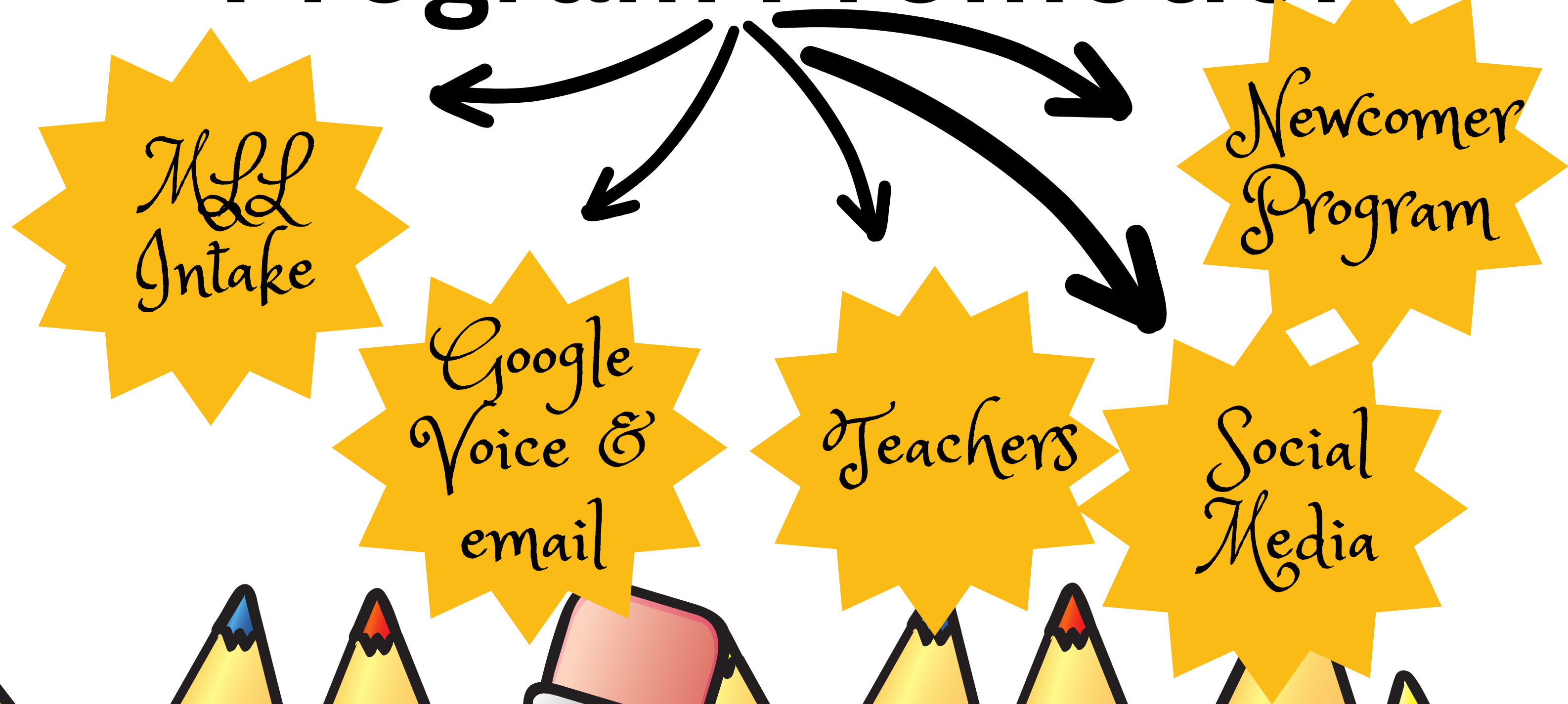
Bilingual Social Worker

- Funded by grant or Intern
- Intake based on family needs
- referral to local Lutheran Church for food pantry
- present parent to our clothing closet
- follows up with parents
- Assist with Parental Outreach





Program Promotion



Newcomer Program



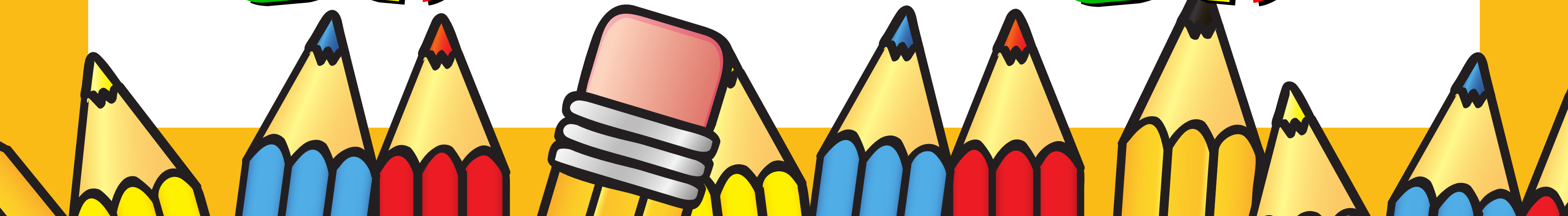
RISWP

A stylized apple graphic with a green leaf and a yellow stem. The apple's body is a white circle with a dashed border made of alternating yellow, blue, and red segments.

Afterschool/or
Saturday
Newcomer
Program

A stylized apple graphic with a green leaf and a yellow stem. The apple's body is a white circle with a dashed border made of alternating yellow, blue, and red segments.

Summer
Newcomer
Program



OTDA Modules

Curriculum Modules
Module 1: American Schools.....
Module 2: Making Friends
Module 3: Transportation and Time
Module 4: School Rules
Module 5: So Much to Learn!
Module 6: Stay Healthy
Module 7: Interests and Talents
Module 8: Getting Help.....
Module 9: Study Skills
Module 10: Taking Tests
Module 11: Technology and Schools
Module 12: School Safety and Security.....
Module 13: Keeping Families Informed
Module 14: Coping With Stress
Module 15: Staying Safe
Module 16: Hate Crime



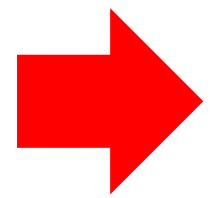
Newcomer Toolkit

U.S. Department of Education

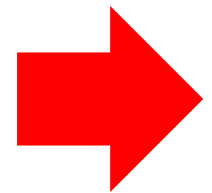


Newcomer Parent University

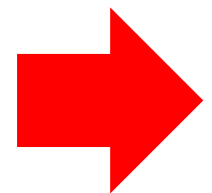
Every Session



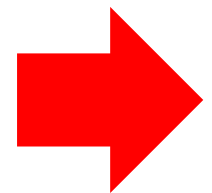
Check-in with families



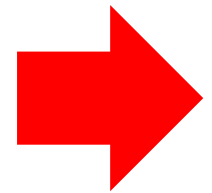
Light refreshments



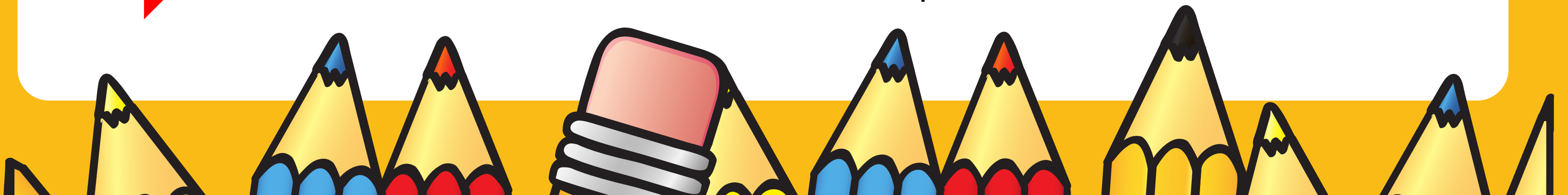
Child Care



Parent Survey



Attendance & Contact Information Update



Newcomer Parent University

Session Topics



➡ Immigration Consultant- Make the Road

➡ Nutrition and Budgeting Expert

➡ Know your Rights/CARECEN

➡ Summer Resources

➡ CHASE Setting Goals & Budgeting

➡ Adult Literacy & English Classes





Check-In with Families

(Every Session)



**School Website/
Important
Informaiton**



**Support
Services**




**Calendar
Events**



**PTA
Meetings**



**School
Events**



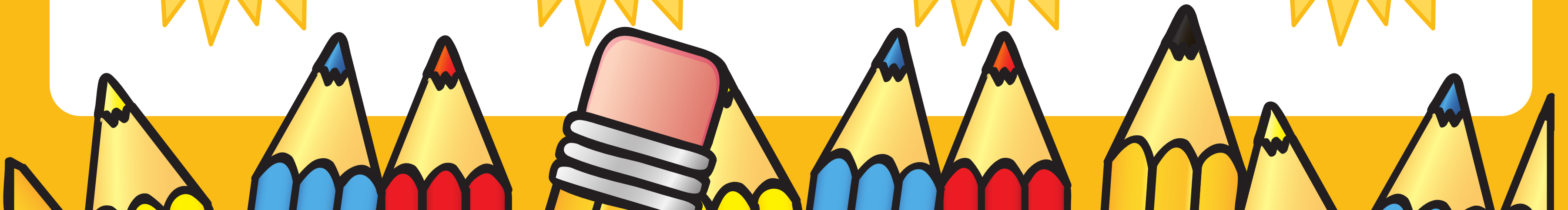
**Parent
Portal**



**Assessments/
NYSESLAT**



**Extra
Curriculars/
Tutoring**



Bilingual Immigration Consultant



Make the Road LI



DREAM Act

(must have attended HS
in US for 2 yrs)



DACA
Deferred Action
for Childhood
Arrivals



Asylum
Seeking
Process



Applying to
College while
undocumented



Special
Immigrant
Juvenile Status



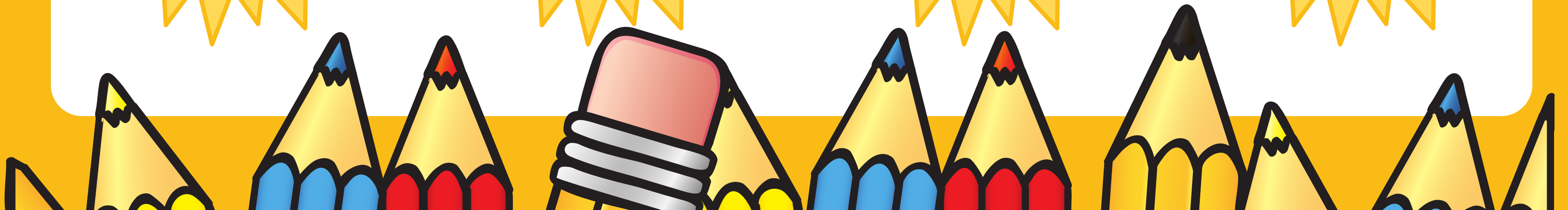
TPS
Temporary
Protected Status



Family
Petitions
(abandonment)



Legal
Help





Bilingual Nutrition Consultant

Cornell Cooperative Extension



My Plate
Healthy Eating



Rethink
your Drink



Family
Meals



Eating Healthy
on a
Budget



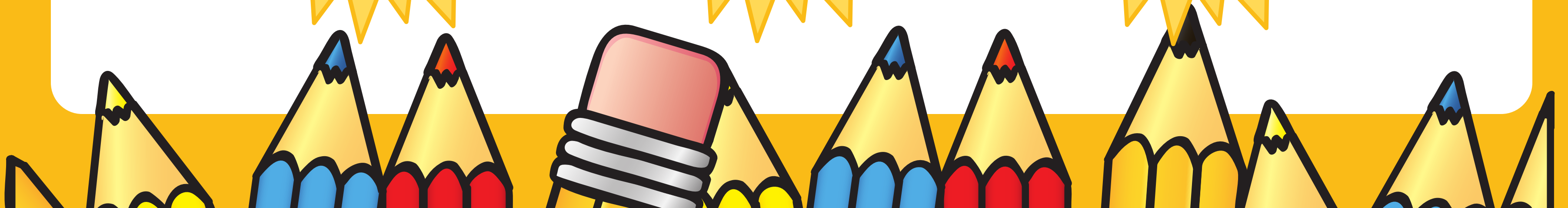
Food and
Physical
Activity



Quick Healthy
Meals and
Snacks



Food Pantry
Options





The New York Immigration Coalition

Know Your Rights Toolkit



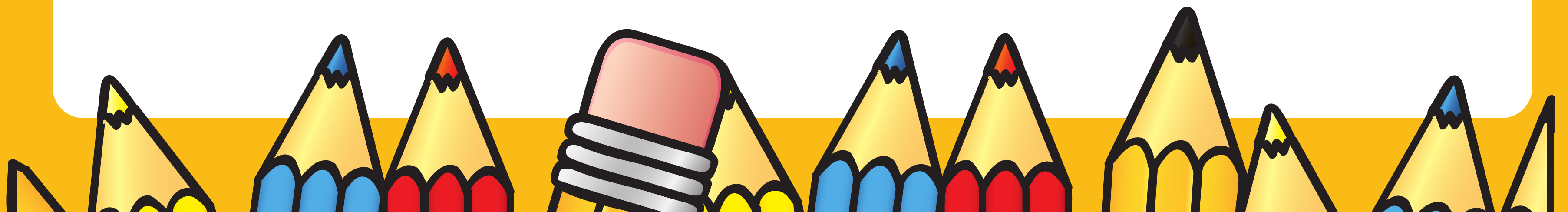
Right to go
to school



Right to
Health
Access



ICE





Summer Resources



**Summer
School**

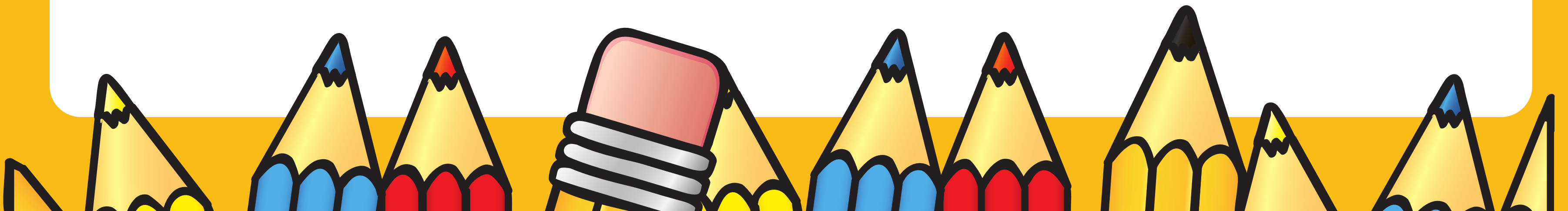


**Public
Library
Summer
Calendar**



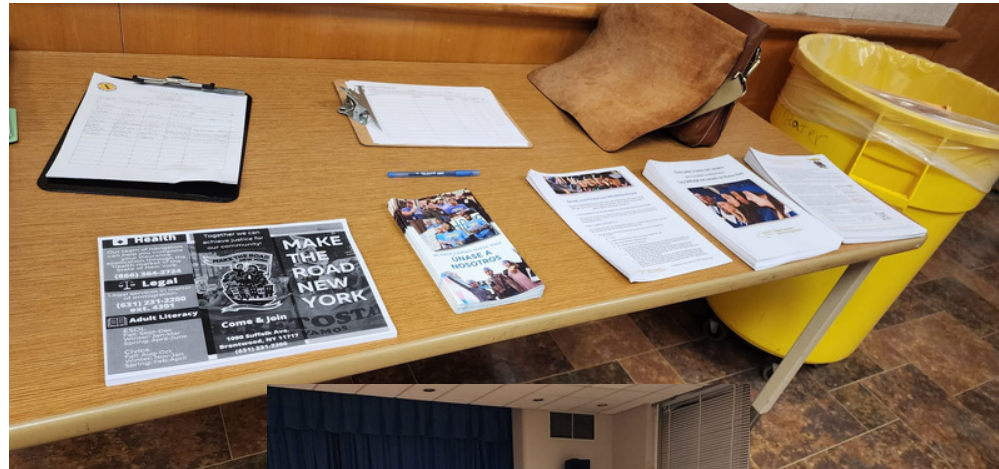
Resources

County Summer Recreation Program
Community Council Camp
Swim Camps
Museum Passes





Snapshot





MULTILINGUAL EDUCATION
DEPARTMENT



UNIVERSIDAD PARA PADRES RECIÉN LLEGADOS

¡Únase a nosotros y aprenda
cómo vivir un estilo de vida
saludable con un presupuesto
limitado!

- ✓ Conozca a otras familias
- ✓ Reciba herramientas para tener éxito
- ✓ Déjanos saber cómo apoyarte
- ✓ Obtenga respuestas a sus preguntas
- ✓ Entérate de información importante

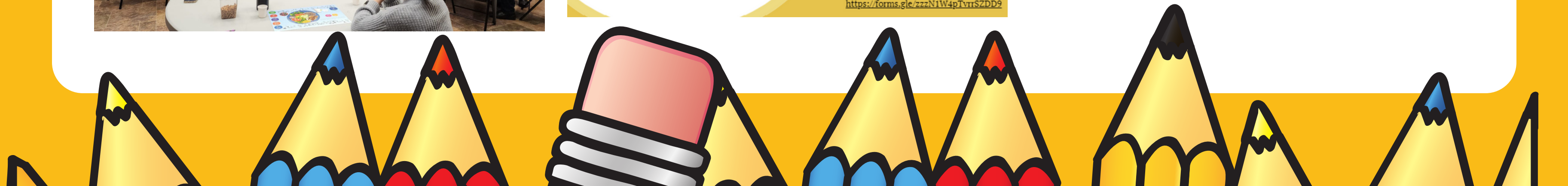
Para más información
516-918-1133
Dr. Estrella Olivares-Orellana

REGISTER NOW!



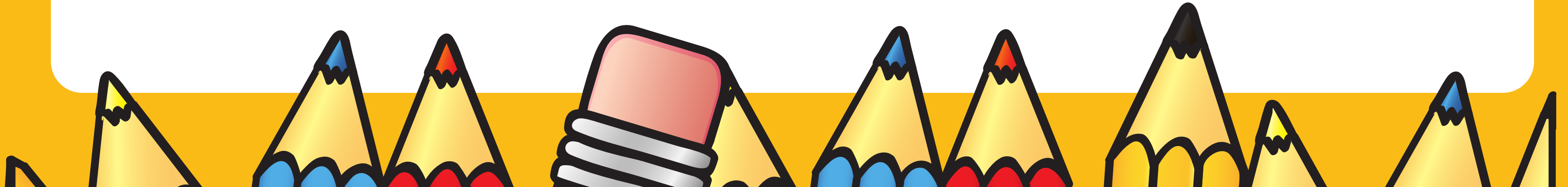
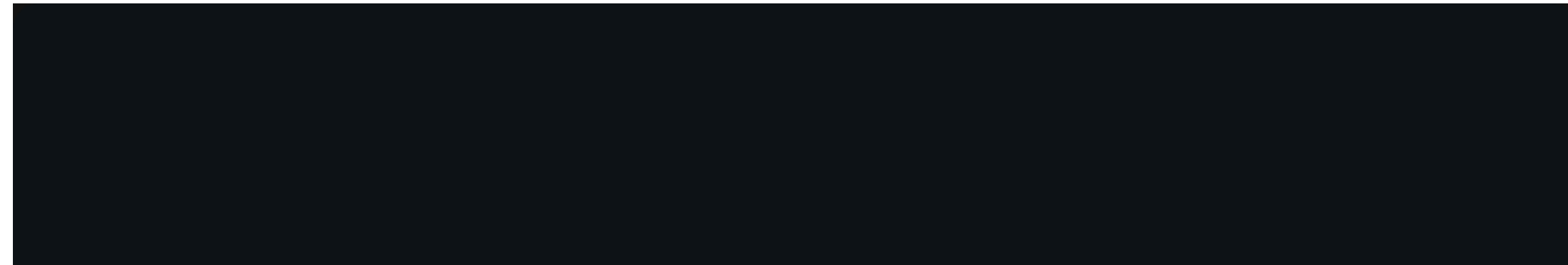
**JUEVES
15
DE
FEBRERO
7PM**
Uniondale High School
933 Goodrich St
Uniondale, NY

<https://forms.gle/zzzN1W4pTvrrSZDD9>





Snapshot





Contact us

Dr. Estrella Olivares-Orellana,

Director of Multilingual Learners

eolivares-orellana@uniondaleschools.org

516-918-1133

Victoria Basantes-Anziani,

MLL Intake Coordinator

vbasantes@uniondaleschools.org

516-918-1008

