

Livermore Valley Joint Unified School District Draft Maps Discussion

November 7, 2024

Districting Process

Step	Description
Two Initial Hearings October 15 & 17	Held prior to release of draft maps. Education and to solicit input on the composition of districts.
Release draft maps	Maps must be posted at least 7 days prior to 3 rd hearing.
Two hearings on draft maps November 7 & 18	Two meetings to discuss and revise the draft maps and to discuss the election sequence.
Map adoption December 17	Map adopted via ordinance or resolution. Final map must be posted at least 7 days prior to adoption.
County Committee Hearing and Vote TBD	County Committee on School District Organization holds a public hearing and votes on whether to approve the change to by-area elections.

Districting Rules and Goals

1. Federal Laws

Equal Population
Federal Voting Rights Act
No Racial Gerrymandering



2. California Criteria

In prioritized order:

1. **Geographically contiguous**
2. **Avoid division of neighborhoods and “communities of interest”**
(Socio-economic geographic areas that should be kept together)
3. **Avoid division of Cities and Census Designated Places**
4. **Easily identifiable boundaries**
5. **Compact**
(Do not bypass one group of people to get to a more distant group of people)

2. California Prohibition

“Shall not adopt election district boundaries for the purpose of favoring or discriminating against an incumbent, political candidate, or political party.”

3. Other Traditional Redistricting Principles

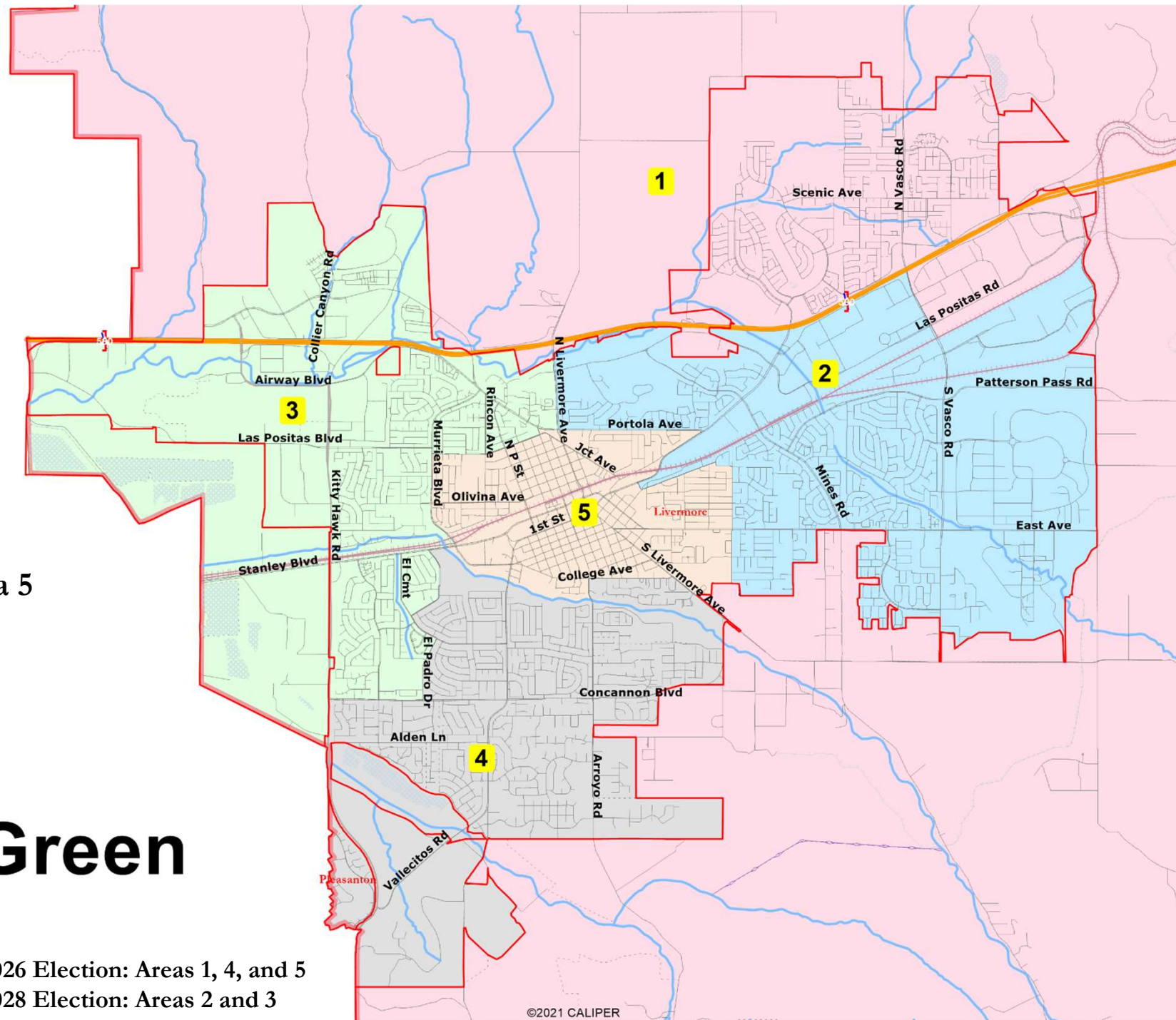
Future population growth

Central Area 5

Green

2026 Election: Areas 1, 4, and 5

2028 Election: Areas 2 and 3

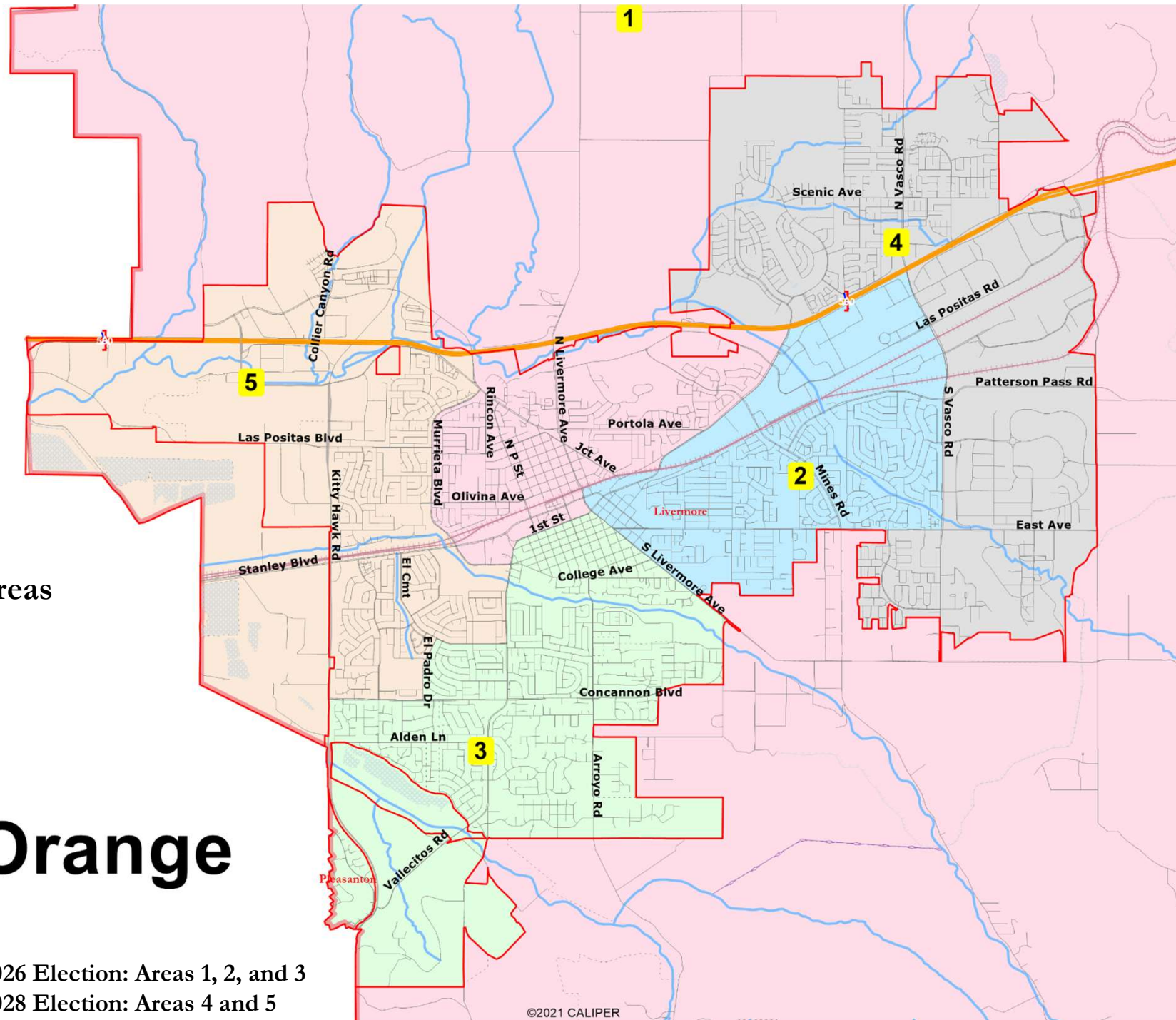


Five regional areas

Orange

2026 Election: Areas 1, 2, and 3

2028 Election: Areas 4 and 5

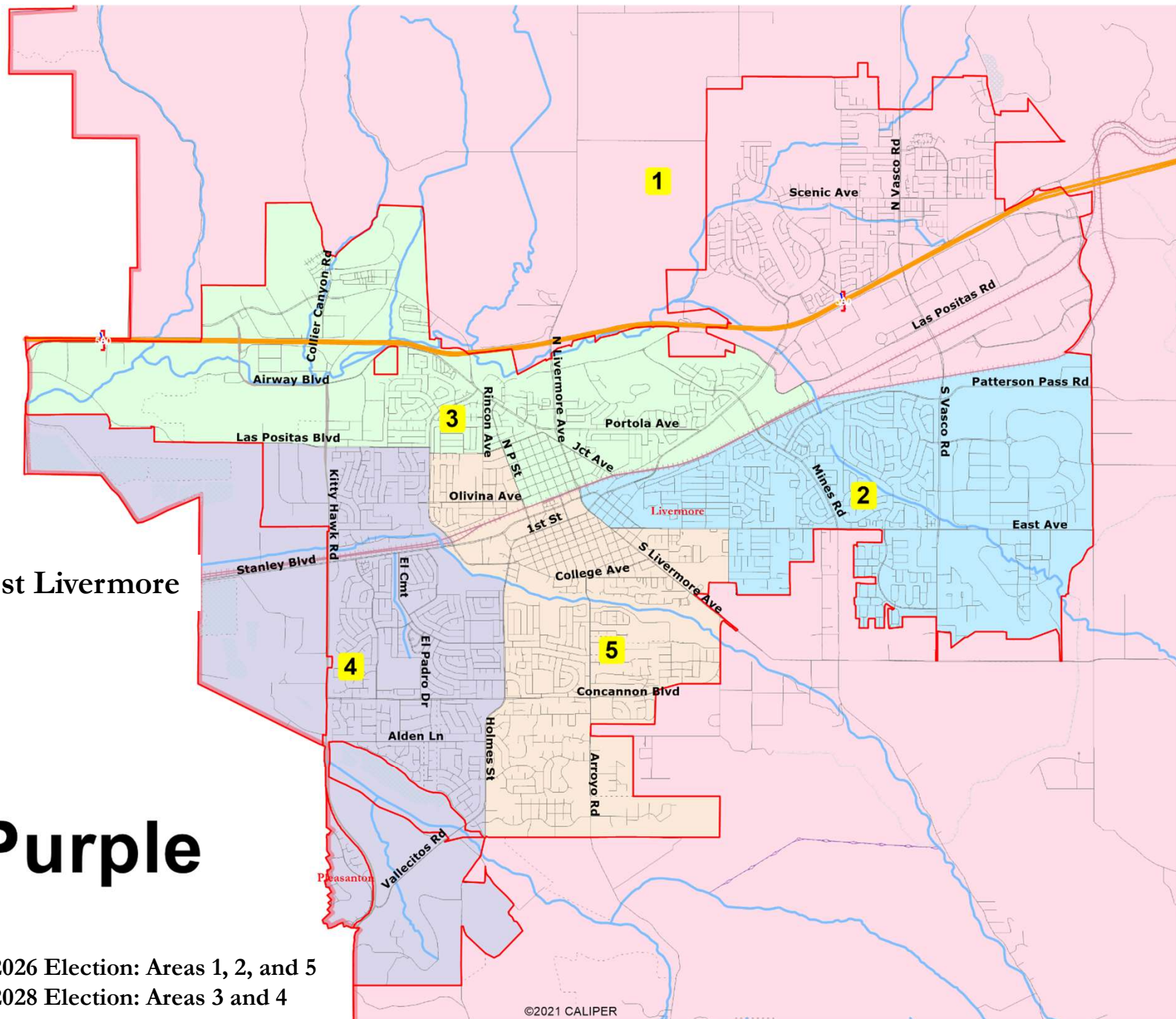


Pleasanton with west Livermore

Purple

2026 Election: Areas 1, 2, and 5

2028 Election: Areas 3 and 4

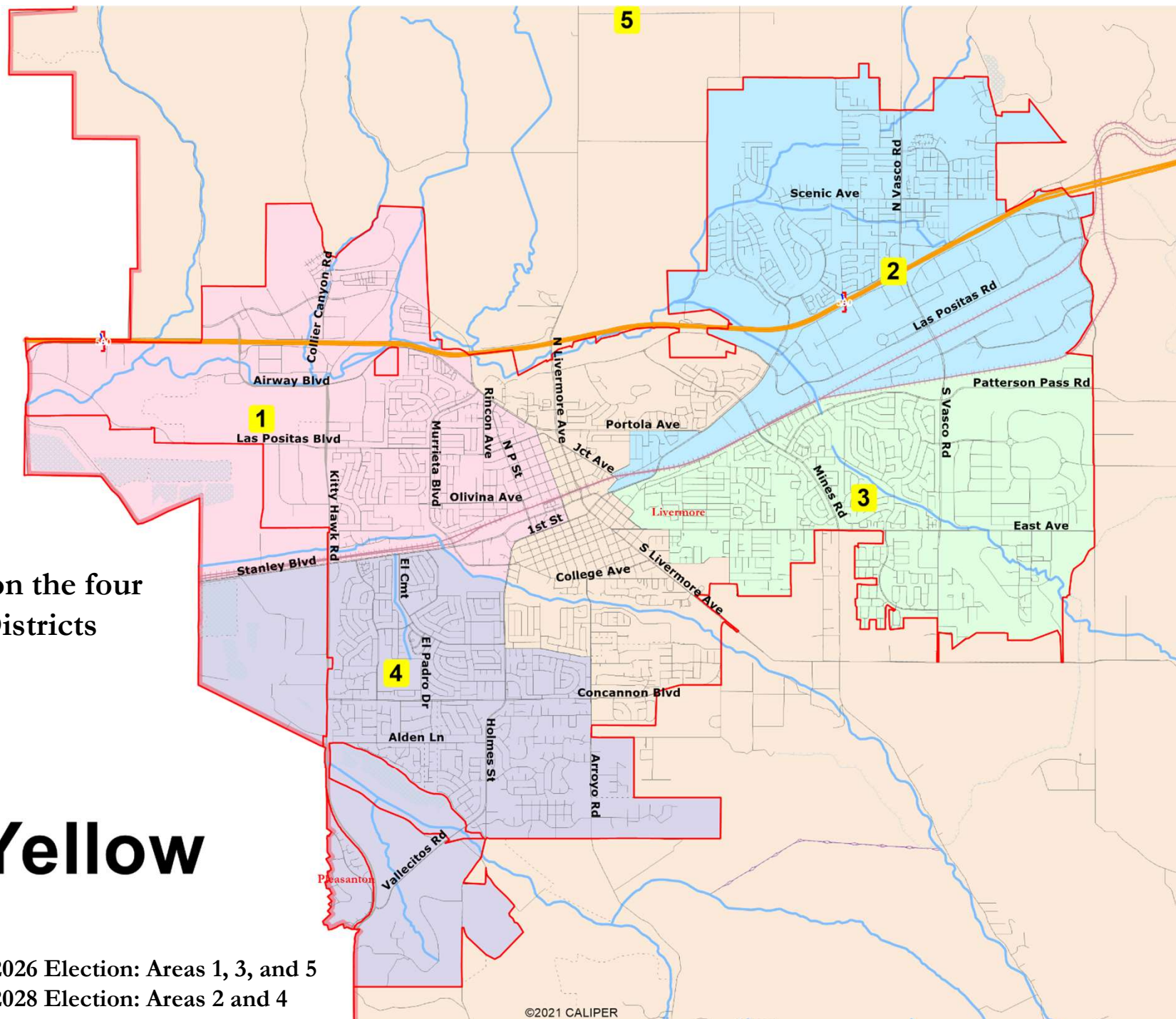


Closely modeled on the four
City Council Districts

Yellow

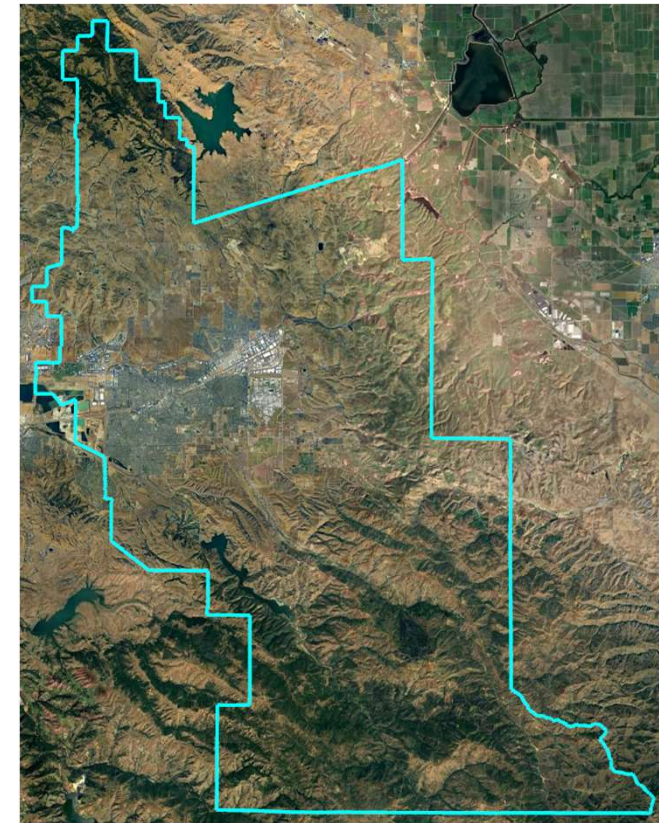
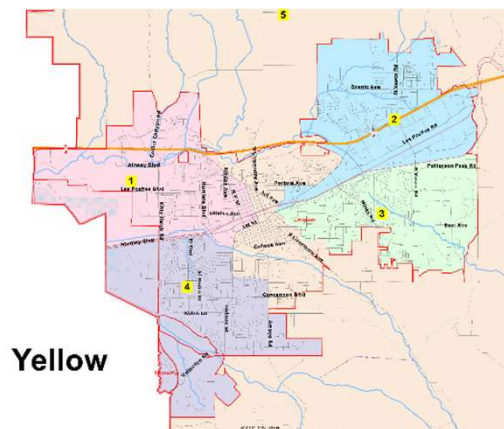
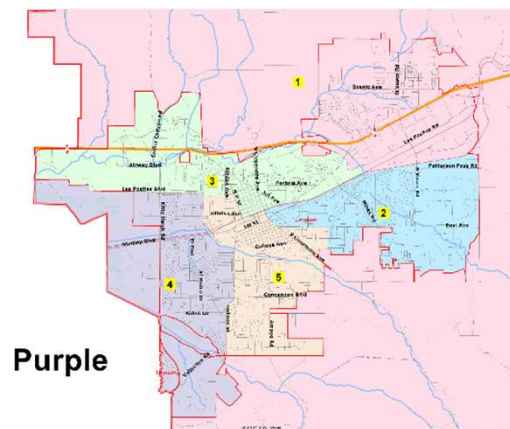
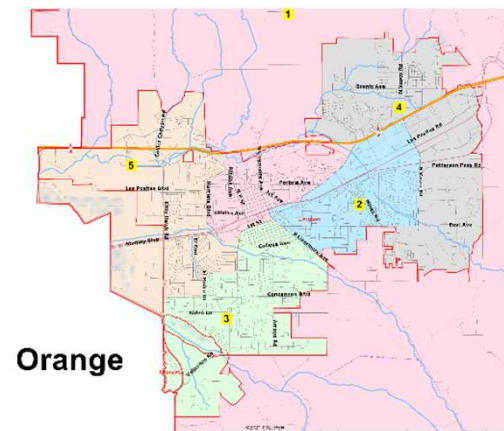
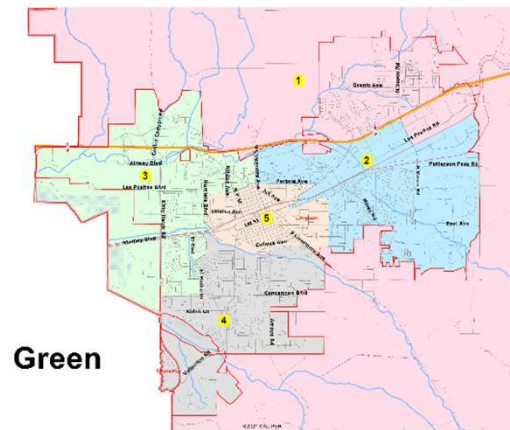
2026 Election: Areas 1, 3, and 5

2028 Election: Areas 2 and 4



Discussion / Feedback

- What do you like or dislike about the various maps?
- What possible changes would improve the maps?



Share Your Thoughts

Website

www.livermoreschools.org

Phone

925-606-3200

Email

communityengagement@lvjUSD.org